

**Quarterly Report to the Commission**  
**Idaho Code § 47-315(9)**  
**Idaho Code § 47-324(6)**

**2nd Quarter 2021 (April - June)**



SUBMITTED TO THE COMMISSION AS  
A SUPPLEMENT TO THE SECRETARY'S REPORT  
AUGUST 24, 2021  
JAMES THUM  
IDAHO DEPARTMENT OF LANDS

**TITLE 47  
MINES AND MINING  
CHAPTER 3  
OIL AND GAS WELLS — GEOLOGIC INFORMATION, AND  
PREVENTION OF WASTE**

**§ 47-324(6) The department shall report quarterly to the commission on the produced volumes of oil and gas, sales volumes of oil and gas, and the meeting of industry standards.**

# Volumes Produced & Sold – 2nd Quarter 2021

## Comparison to Previous Quarter / Previous Year

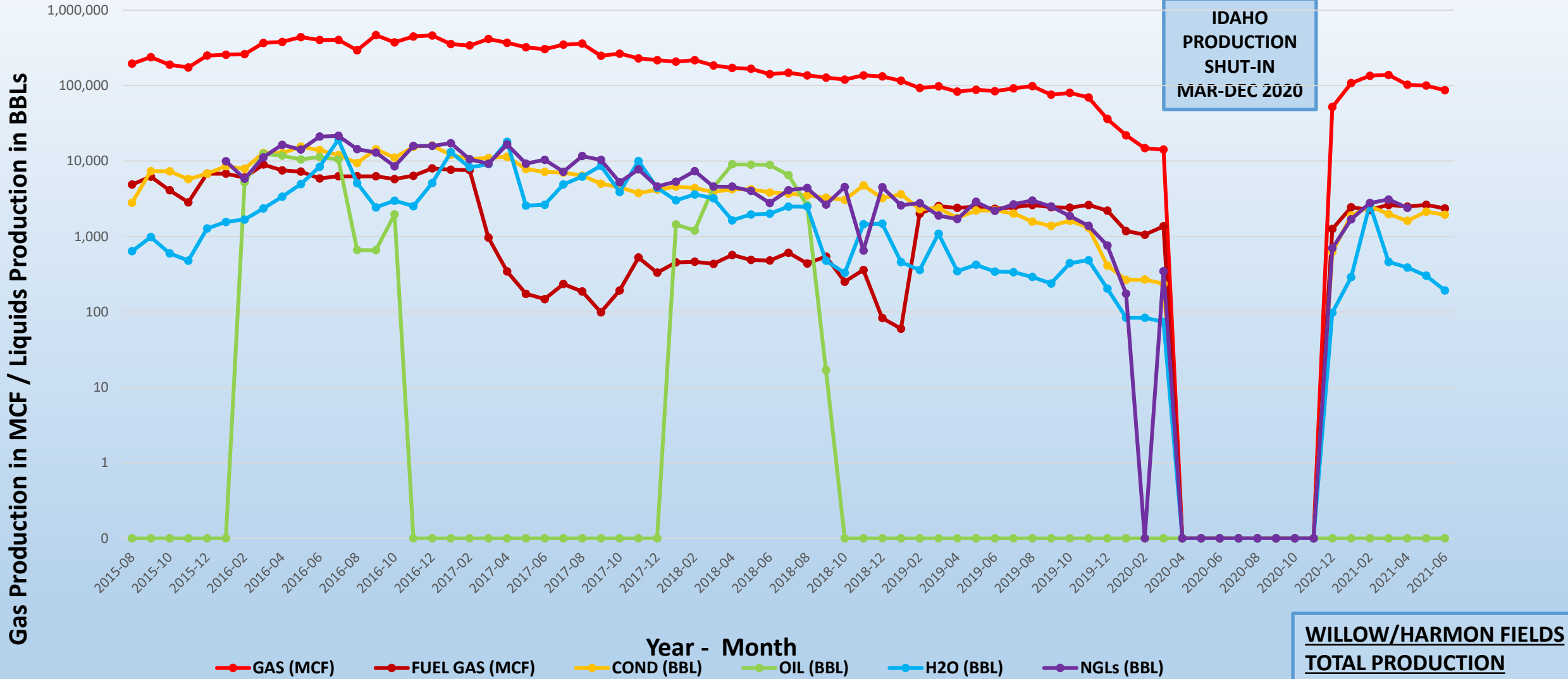
<u>Volumes Produced</u>	<u>Cum. Gas (MCF)</u>	<u>Condensate (BBL)</u>	<u>NGLs (Gallons)*</u>	<u>Cum. Oil (BBL)</u>	<u>H2O (BBL)</u>
2nd Quarter 2021	270,171	8,139	241,581	0	883
1st Quarter 2021	324,627	6,843	317,681	0	3,429
Increase / Decrease	-54,456	1,296	-76,100	0	-2,546
% Difference	-16.8	18.9	-24.0	NA	-74.2
vs 2nd Qtr 2020**	100	100	100	NA	100
<u>Volumes Sold***</u>	<u>Gas (MMBtu)</u>	<u>Condensate (BBL)</u>	<u>NGLs (Gallons)</u>	<u>Oil (BBL)</u>	
2nd Quarter 2021	272,213	9,140	244,341	0	
1st Quarter 2021	332,239	7,544	275,705	0	
Increase / Decrease	-60,026	1,596	-31,364	0	
% Difference	-18.1	21.2	-11.4	0	
vs 2nd Qtr 2020**	100	100	100	NA	

\*Denotes Plant Production from Highway 30 Facility

\*\*All Idaho Production Shut-In March 21, 2020 to December 15, 2020. No Sales Volumes reported for 1<sup>st</sup> Quarter 2020

\*\*\*Sold Volumes Reports are current for December 2020 through June 2021. December 2020 Liquids sold in 2021.

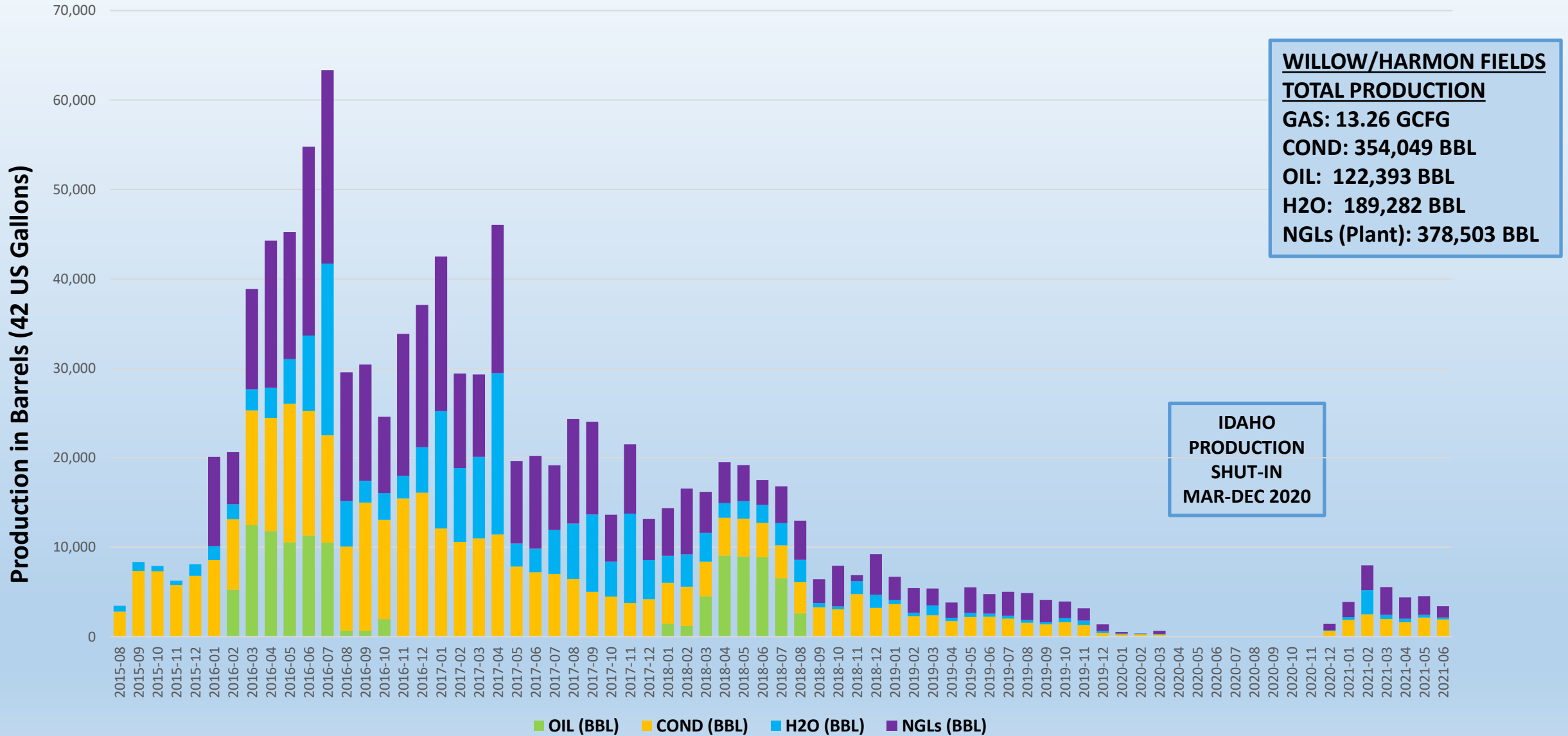
## Western Idaho Production - August 2015 to Present



**IDAHO  
PRODUCTION  
SHUT-IN  
MAR-DEC 2020**

**WILLOW/HARMON FIELDS**  
**TOTAL PRODUCTION**  
**GAS: 13.26 GCFG**  
**COND: 354,049 BBL**  
**OIL: 122,393 BBL**  
**H2O: 189,282 BBL**  
**NGLs (Plant): 378,503 BBL**

## Western Idaho Production Liquids Output - August 2015 to Present



**Year - Month**

# SW IDAHO – 2020 PRODUCTION DAYS

## 2020 Production Days

29	30	31	1-Jan	2	3	4
5	6	7	8	9	10	11
12	13	14	15	16	17	18
19	20	21	22	23	24	25
26	27	28	29	30	31	1-Feb
2	3	4	5	6	7	8
9	10	11	12	13	14	15
16	17	18	19	20	21	22
23	24	25	26	27	28	29
1-Mar	2	3	4	5	6	7
8	9	10	11	12	13	14
15	16	17	18	19	20	21
22	23	24	25	26	27	28
29	30	31*	1-Apr	2	3	4
5	6	7	8	9	10	11
12	13	14	15	16	17	18
19	20	21	22	23	24	25
26	27	28	29	30	1-May	2
3	4	5	6	7	8	9
10	11	12	13	14	15	16
17	18	19	20	21	22	23
24	25	26	27	28	29	30
31	1-Jun	2	3	4	5	6
7	8	9	10	11	12	13
14	15	16	17	18	19	20
21	22	23	24	25	26	27
28	29	30	1-Jul	2	3	4

**Q1:**  
55 Days  
36 Days

**Q2:**  
0 Days  
91 Days

28	29	30	1-Jul	2	3	4
5	6	7	8	9	10	11
12	13	14	15	16	17	18
19	20	21	22	23	24	25
26	27	28	29	30	31	1-Aug
2	3	4	5	6	7	8
9	10	11	12	13	14	15
16	17	18	19	20	21	22
23	24	25	26	27	28	29
30	31	1-Sep	2	3	4	5
6	7	8	9	10	11	12
13	14	15	16	17	18	19
20	21	22	23	24	25	26
27	28	29	30	1-Oct	2	3
4	5	6	7	8	9	10
11	12	13	14	15	16	17
18	19	20	21	22	23	24
25	26	27	28	29	30	31
1-Nov	2	3	4	5	6	7
8	9	10	11	12	13	14
15	16	17	18	19	20	21
22	23	24	25	26	27	28
29	30	1-Dec	2	3	4	5
6	7	8	9	10	11	12
13	14	15	16	17	18	19
20	21	22	23	24	25	26
27	28	29	30	31	1-Jan	2

**Q3:**  
0 Days  
92 Days

**Q4:**  
17 Days  
75 Days

**Total:** Producing 72 Days  
Shut-In 294 Days

\*March 31, 2020 - M6.5 Earthquake Near Stanley, ID

# SW IDAHO – 2021 PRODUCTION DAYS

## 2021 Production Days

28	29	30	31	1-Jan	2	3		28	29	30	1-Jul	2	3	4			
4	5	6	7	8	9	10		5	6	7	8	9	10	11			
11	12	13	14	15	16	17		12	13	14	15	16	17	18			
18	19	20	21	22	23	24		19	20	21	22	23	24	25			
25	26	27	28	29	30	31		26	27	28	29	30	31	1-Aug			
1-Feb	2	3	4	5	6	7		2	3	4	5	6	7	8			
8	9	10	11	12	13	14		9	10	11	12	13	14	15			
15	16	17	18	19	20	21		16	17	18	19	20	21	22			
22	23	24	25	26	27	28		23	24	25	26	27	28	29			
1-Mar	2	3	4	5	6	7		30	31	1-Sep	2	3	4	5			
8	9	10	11	12	13	14		6	7	8	9	10	11	12			<b>Q3:</b>
15	16	17	18	19	20	21		13	14	15	16	17	18	19			<b>55 Days</b>
22	23	24	25	26	27	28		20	21	22	23	24	25	26			<b>00 Days</b>
29	30	31	1-Apr	2	3	4		27	28	29	30	1-Oct	2	3			
5	6	7	8	9	10	11		4	5	6	7	8	9	10			
12	13	14	15	16	17	18		11	12	13	14	15	16	17			
19	20	21	22	23	24	25		18	19	20	21	22	23	24			
26	27	28	29	30	1-May	2		25	26	27	28	29	30	31			
3	4	5	6	7	8	9		1-Nov	2	3	4	5	6	7			
10	11	12	13	14	15	16		8	9	10	11	12	13	14			
17	18	19	20	21	22	23		15	16	17	18	19	20	21			
24	25	26	27	28	29	30		22	23	24	25	26	27	28			
31	1-Jun	2	3	4	5	6		29	30	1-Dec	2	3	4	5			
7	8	9	10	11	12	13		6	7	8	9	10	11	12			
14	15	16	17	18	19	20		13	14	15	16	17	18	19			<b>Q4:</b>
21	22	23	24	25	26	27		20	21	22	23	24	25	26			<b>XX Days</b>
28	29	30	1-Jul	2	3	4		27	28	29	30	31	1-Jan	2			<b>XX Days</b>
													<b>Total:</b>	<b>Producing</b>	<b>236 Days</b>		
														<b>Shut-In</b>	<b>0 Days</b>		

# Plant – Transportation – Sold Volumes

1-Year Running Totals – June 2020 through June 2021\*

<u>Residue Gas (MCF)</u>			<u>Gas Sold (MMBtu)</u>	<u>Produced vs Sold (Variance)</u>	
637,975			649,782	-1.9%	
<u>Plant Condensate (BBL)</u>	<u>Condensate Transported**</u>	<u>Produced vs Transported (Variance)</u>	<u>Condensate Sold (BBL)</u>	<u>Produced vs Sold (Variance)</u>	<u>Transported vs Sold (Variance)</u>
15,562	16,684	-7.2%	16,685	-7.2%	0%
<u>Plant NGLs (Gallons)</u>	<u>NGLs Transported</u>	<u>Produced vs Transported (Variance)</u>	<u>NGLs Sold (Gallons)</u>	<u>Produced vs Sold (Variance)</u>	<u>Transported vs Sold (Variance)</u>
588,688	603,699	-2.6%	520,046	11.7%	13.9%
<u>Oil Produced (BBL)</u>	<u>Oil Transported</u>	<u>Produced vs Transported (Variance)</u>	<u>Oil Sold (BBL)</u>	<u>Produced vs Sold (Variance)</u>	<u>Transported vs Sold (Variance)</u>
0	0	---	0	---	---

Numbers in **RED** indicate variance in excess of 5%

\*Liquids Transportation and Sales Volumes may be delayed 60 to 90 days after production is reported.

\*\*Condensate Transporter is also Purchaser (Pinnacle) since December 2020 field re-start.



# Well & Permit Activity

## 2nd Quarter 2021

<u>Wells</u>	<u>Active Permits*</u>	<u>Drilling wells</u>	<u>Producing wells</u>	<u>Comments</u>	
April	12	0	6	5 Wells in Willow Field Producing 1 Well in Harmon Field Producing	
May	12	0	6		
June	13	0	6	APD for Barlow 2-14 Approved	
<u>Other</u>	<u>Sundry Notices</u>	<u>Workover / P&amp;A</u>	<u>APDs Received</u>	<u>APDs Approved</u>	<u>APDs Denied</u>
April	0	0	0	0	0
May	0	0	0	0	0
June	0	0	0	1	0

\*6 Producing Wells, 6 Shut-in Wells, 1 Pending P&A

**TITLE 47  
MINES AND MINING  
CHAPTER 3  
OIL AND GAS WELLS — GEOLOGIC INFORMATION, AND PREVENTION OF  
WASTE**

**§ 47-315(9) The commission shall require the department to perform the following activities on an annual basis:**

- (a) Inspect and report on all active well sites and equipment;**
- (b) Visit and file a report on production and processing facilities; and**
- (c) Submit an opinion as to any areas of concern, as identified on inspection reports.**

# Inspection Activity – 2nd Quarter 2021

- **Well Inspections**
  - 0 during 2nd Quarter
- **Gas Facility Inspections**
  - 0 during 2nd Quarter
- **1 Outstanding Issue from 2020:**
  - Tracy Trust #3-2 still has casing pressure
  - Currently S/I & monitoring, transferred to Individual Well Bond
  - Current Operator plans to complete P&A in 2021 in conjunction with possible workover operations & field maintenance
- **No Citations Issued**
- **2021 Totals Through 2nd Quarter:**
  - 0 Well Inspections
  - 0 Facilities Inspections



DJS 1-15 WELL PAD LOOKING NW  
WILLOW FIELD, PAYETTE CO. ID  
SEPTEMBER 2019  
PHOTO COURTESY D. SCHWARZ

**Please Direct All Questions & Suggestions  
to the IDL Division of Minerals, Public Trust, Oil & Gas**  
<https://ogcc.idaho.gov/contact-us/>



**LITTLE WILLOW GATHERING FACILITY  
PAYETTE CO. ID  
LOOKING SW FROM ML 2-10  
WELL PAD, JUNE 2017  
PHOTO COURTESY J. THUM**

**2021 3rd Quarter Report will be provided during 4th Quarter 2021**