



IDAHO OIL AND GAS CONSERVATION COMMISSION
SUNDRY NOTICE

REVIEWED
By James Thum at 3:57 pm, Jul 14, 2021



NAME OF OPERATOR: Snake River Oil and Gas Date: 7-5-2021
Address: 117 E. Calhoun St. (box 500)
City: Magnolia State: AR Zip Code: 71753 Telephone: 870.234.3080
Contact Name: Nate Caldwell Email Address: caldwell.nathan@weiser-brown.com

Well Permit Number: 11-075-20033 Lease and Well Name (if different): Barlow 1-14
USWN / API Number: 11-075-20-033 Type of Well: Oil Well X Gas Well X Other NGL
Field and Reservoir (if wildcat, so state): Harmon County: Payette
Well Surface Location: Section: 14 Township: 8N Range: 5W (or block and survey)
(give footage from Section lines): 1598' FSL and 2458" FWL
Latitude/Longitude (Dec Degrees): N44Deg 01'47.4581" / 54'14.7547" Datum: WGS84 NAD83 NAD27 X
Type of Submission: Notice of Intent X Subsequent Report Final Abandonment Notice
Type of Action: Acidize Alter Casing Casing Repair Change Plans Convert to Injection
Deepen New Construction Hydraulic Fracturing Plug and Abandon Plug Back
Production (Start/Resume) Reclamation Recompletion Stimulation Test
Temporarily Abandon Water Disposal Water Shut-off Well Integrity Test Other X

Describe the proposed or completed operation, clearly stating all pertinent details including estimated starting date of the proposed work and approximate duration thereof. If the proposal is to deepen directionally or recomplate horizontally, give subsurface locations and measured and true vertical depths of all pertinent markers and zones. Attach a copy of the Bond under which the work will be performed or provide the Bond No. on file with IDL. Required subsequent reports shall be filed within thirty (30) days following completion of the involved operations. Final Abandonment Notices shall be filed only after operations, and only after all requirements, including reclamation have been completed and the operator has determined that the site is ready for final inspection.

SRDC WILL RUN DOWN HOLE PRESSURE GAUGES ACROSS EXISTING PERFORATIONS AND SHUT IN FOR 48 HRS. IN EFFORT TO COLLECT RESEVOIR DATA.
THEM GO IN HOLE AND PERFORATE INTERVALS
3467' - 3480' AND
3449 - 3460'

Attach additional information as needed to support the application

RE-PERFORATING PROCEDURE
SNAKE RIVER OIL AND GAS
Barlow 1-14
Payette County, Idaho
11-075-20033
07/03/2021

1. Hold Safety meeting.
2. Move in and rig up slickline unit.
3. Make 2.25" gage ring run and tag bottom.
4. Run pressure/temperature gauges to mid-perforation of current perforations at 3509'.
5. Shut well in for 48 hours. Record 12-, 24-, 36-, and 48-hour surface pressure for correlation.
6. Pull out of the hole while making 5-minute stops at 3000', 2000', and 1000'.
7. Rig down and release slickline unit.
8. Move in and rig up wireline perforating unit and local crane.
9. Make 2.25" Gamma Ray/Casing Collar Locator run to PBTD.
10. Pull out of the hole and pick up perforating gun.
11. Go back in the hole with perforating gun and perforate the interval 3467' to 3480' with 6 SPF.
12. Pull out of the hole and pick up second perforating gun.
13. Go back in the hole with perforating gun and perforate the interval 3449' to 3460' with 6 SPF.
14. Pull out of the hole, rig down, and release wireline.
15. Flow test well.
16. Monitor fluid recovery and composition.

SROG
Barlow 1-14
Payette County, Idaho
11-075-20033
Current WBS

GL: 2,164'

RKB: 12.5' (1.5' above GL)

Updated 11/17/20 MEG

Primary Logs

Weatherford Triple combo 1/26/18
 Pioneer RBL 2/8/18

Conductor:

16", 0.250" wall (15.500" ID) @ 120' (Pre-set)
 Cement: (as noted on proposed WBS detail not in wk rpt.)
 200 sx (273 cu-ft), class "A" cement (200% excess)

Surface:

26 jts 9-5/8", 40.0 #, K-55, STC (8.835" ID) @ 1192'
 Cement:
 Lead: 248 sx (137 bbls) RC Econolite Plus @ 11.0 ppg, yield= 3.11 cf/sx and Tail: 80 sx (19 bbls) RC Surface Tail @ 14.8 ppg, yield= 1.36 cf/sx. Displace w/ 9.1 ppg mud; bump plug w/ 750 psi (500 psi over FPP). 40 bbls (75 sx) cement to surface. Run 1" tbg down annulus to 80' and top out with tail cement

9.7 ppg CaCL with pkr fluid on backside -
 Corr inhib, biocide, Oxy-scavenger

Wellhead:

A Sec: 9-5/8" SOW x 11" 5M
 B Sec: 11" 5M x 7 1/16" TH
 C Sec: 2-9/16" 5M x 2-1/16 5M Prd tree
 (3 vertical run gate valves, 1 manual wing, ESD and Pos ck)

19" Hole

120'

12-1/4" Hole

1092'

- 11/6/20 - Drilled out cmt retainer and sqz.
 Tested sqz to 900 psig
 Cmt Retainer @ 1040' (Drilled out)
Sqz #3 - 1092-94' 200 sks class G (Drilled out)
- 11/7/20 - Drilled out cmt retainer and sqz.
 Tested sqz to 900 psig
 Cmt Retainer @ 1220' (Drilled out)
Sqz #2 - 1248'-50' 200 sks Class G
- 11/7/20 - Drilled out cmt retainer and sqz.
 Tested sqz to 900 psig
 Cmt Retainer @ 1250' (Drilled out)
Sqz #1 - 1300'-02 200 sks Class G

101 jts - 2 7/8" 6.5# J-55 EUE 8rd tbg

TOC at 1540' +/- CBL 2/8/18

Completion Assy 11/9/20

2 7/8" On/Off tool at 3301' w/ 2.313" X profile
 2 7/8" x 5 1/2" Set VS1X at 3303' 9K lbs down
 2.313" X profile at 3314'
 EOT at 3322'

11/7/20 - Tagged bottom (CIBP) at 3522' w/ 4.75" RB during WO.

3503-12' Perfs 3 1/8" x 34' HSE gun 6 SPF 60 deg phased (2/17/18)
 2/18/18 - Tested 1.6 MMCFD; 43 BCPD; 2.4 BWPDP FTP 1000 psig

3522' 4.25" CIBP (2-15-18)
 3526-29' Perfs 3 1/8" x 34' HSE gun 6/60 (2/14/18)
 3531-37' Perfs 3 1/8" x 34' HSE gun 6/60 (2/14/18)

Well flowing to prod test unit flare @ 300-400 MCFD
 3561' CIBP (2-12-18)
 3572-98' Perfs 3 1/8" x 34' HSE gun 6 SPF 60 deg phased
 (2/11/18) recovered 26 BW(13.2 bbls LW) some tail gas,
 no oil cut in samples

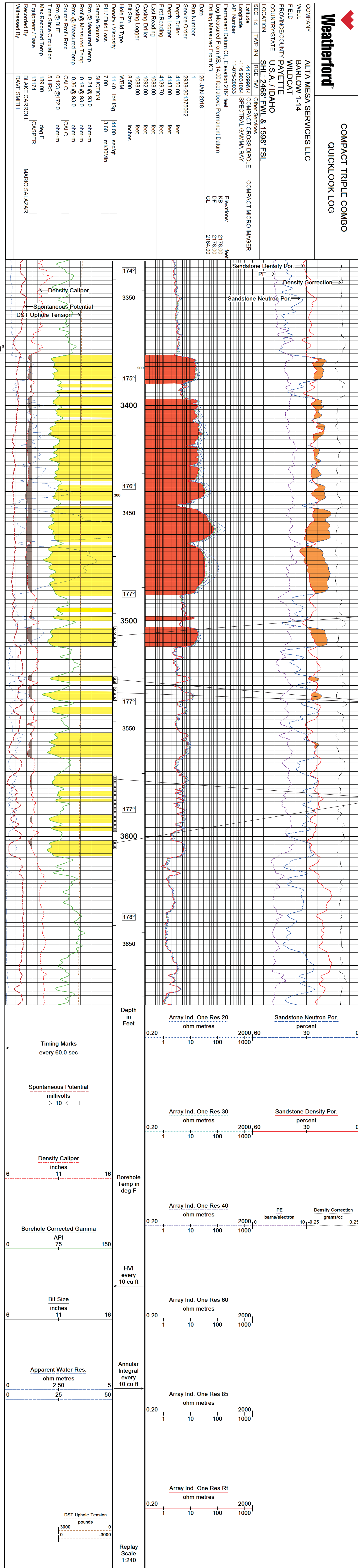
3602-06' Perfs 3 1/8" x 34' HSE gun 6/60 (2/11/18) recovered 26
 BW(13.2 bbls LW) some tail gas, no oil cut in samples

5-1/2", 17#, K-55, LTC 4138'
 M&P Lead: 430 sx (131.7 bbls) RC Lead w/ 0.25 #/sx
 Polyflakes + 0.10% Bactericide @ 13.0 ppg; yield= 1.72
 cf/sx; Tail: 400 sx (94.0 bbls) RC Tail w/ 0.25 #/sx
 Polyflake, 0.2% RC-49 gas migration control + 0.10%
 Bactericide @ 14.2 ppg; yield= 1.36 cf/sx. Full returns
 throughout job. 65 sx good cmt to surface.

8 1/2" Hole

I
 FS @ 4138'

TD: 4150' TVD 4150'



Perfs:
3503'-12'
IP: 1.6 MMCFGD
43 BCPD
2.4 BWPD
FTP 1010#
2/18/2018

Perfs:
3526'-29'
3531'-37'
Tested 1.85 MMCFGD (max)
w/ water and
light brown condensate
FTP 1250#
declined to 400 MCFGD
and 100# after 24hrs
2/14/2018

Perfs:
3572'-98'
3602'-06'
Swabbed Water
Slight Tail Gas
2/11/2018

Sand 'D'