

CONFIDENTIAL

SUPERIOR ENERGY SERVICES, INC.
BHP SUMMARY REPORT



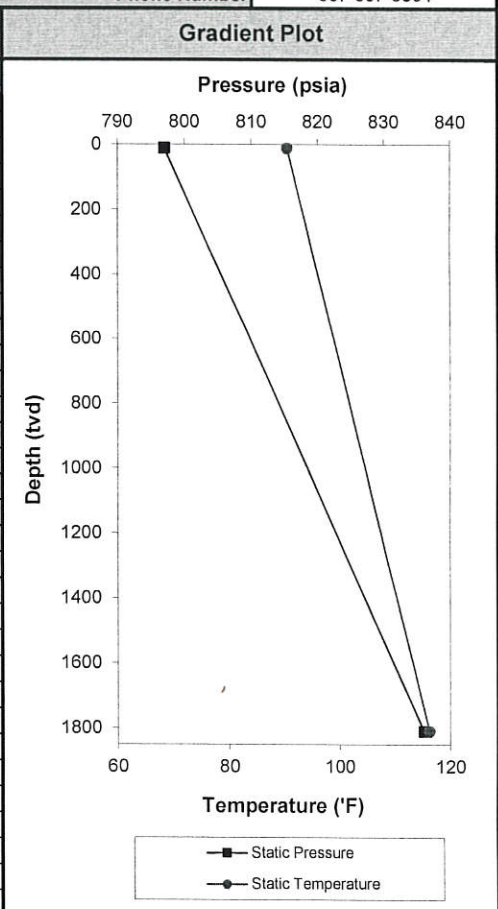
Company: Bridge Energy
 Field:
 Lease & Well: **Hamilton State 1-17**
 County/Parish:

Date: 8/25/2010
 Reservoir/Sand:
 Service Ticket #:
 State: CO

Completion Information - All Depths Are Measured Depths					Gauge Information		
Tubing Size			Mandrel Depths - MD		Gauge Serial Number	5977	
Tubing Depth			#1		Pressure Rating	15,000	
Casing Size			#2		Calibration Date	May-09	
Casing Depth			#3		Gauge Type	Electronic	
Liner Depth			#4		Manufacturer	Canada Tech	
Total Depth			#5		Model	CT Shortline	
Plug Back Total Depth			#6		Report Information		
Packer Type			#7		Client Contact	B. Galle	
Packer Depth			#8		Gauge Operator	Grand Junction, CO	
Perforated Interval			#9		Report Analyst	P. Buckner	
Shots / Foot			#10		Analyst Location	Broussard, LA	
Elevation	12		#11		Phone Number	337-837-8604	
			#12				

Wireline Depth from THF	Measured Depth from RKB	TVD from RKB	Static Psi (psia)	Gradient (psi/ft.)	Static Tmp. (°F)	Gradient (°F/ft.)
0	12	12	797		90.5	
1798	1810	1810	836	0.022	116.2	0.014

NOTE: Maximum recorded bhp is 836 psia, minimum recorded bhp is 352 psia.



Well Test Information						Survey Information			
Parameter	Going in Hole	Rate #1	Rate #2	Rate #3	Rate #4		This Test	Last Test	
Length Of Test	N/A					Casing Pressure	w/ gauge	N/A	
Total Gas / mscf/d	N/A					Flowing Tbg. Pressure	w/ dwt	N/A	
Inj. Gas / mscf/d	N/A					Shut-in Tbg. Pressure	w/ dwt	797	
BOPD / BCPD	N/A					Fluid Level	ft. (tvd)	N/A	
BWPD	N/A					Water Level	ft. (tvd)	N/A	
Choke Size	N/A					Maximum BHT	@ mid-perfs	N/A	
% BS & W	N/A					Maximum BHP	@ mid-perfs	N/A	
						Hrs. Shut-in		N/A	

Remarks:

API #: