

**Quarterly Report to the Commission**  
**Idaho Code § 47-315(9)**  
**Idaho Code § 47-324(6)**

**2nd Quarter 2025 (April-June)**



Submitted to the Commission as  
a Supplement to the Secretary's Report  
September 15, 2025

James Thum  
Idaho Department of Lands

**TITLE 47  
MINES AND MINING  
CHAPTER 3  
OIL AND GAS WELLS — GEOLOGIC INFORMATION, AND  
PREVENTION OF WASTE**

**§ 47-324(6) The department shall report quarterly to the commission on the produced volumes of oil and gas, sales volumes of oil and gas, and the meeting of industry standards.**

# Volumes Produced & Sold – 2nd Quarter 2025

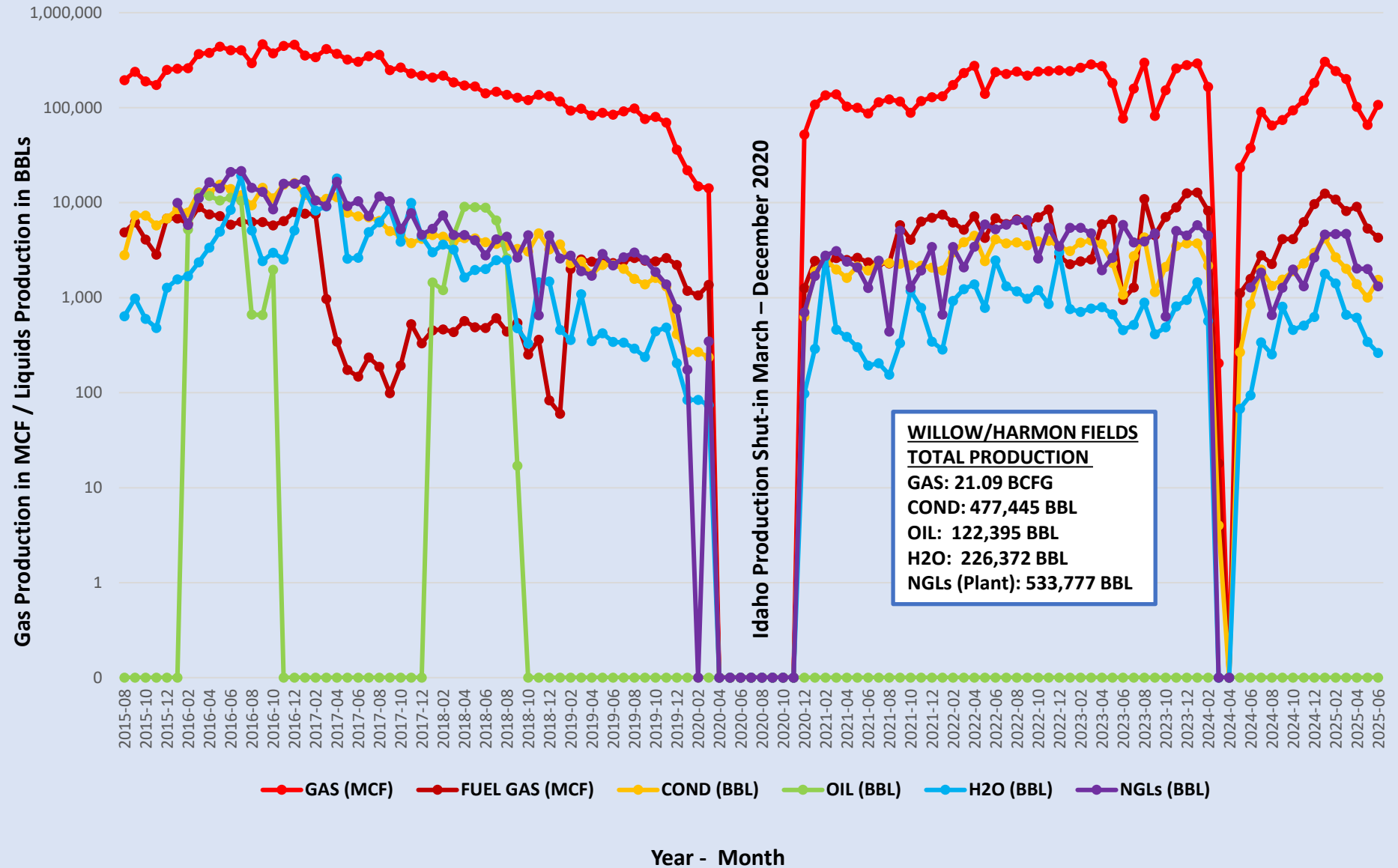
## Comparison to Previous Quarter / Previous Year

| <u>Volumes Produced</u> | <u>Cum. Gas (MCF)</u> | <u>Condensate (BBL)</u> | <u>NGLs (Gallons)*</u> | <u>Cum. Oil (BBL)**</u> | <u>H2O (BBL)</u> |
|-------------------------|-----------------------|-------------------------|------------------------|-------------------------|------------------|
| 2nd Quarter 2025        | 292,464               | 5,241                   | 224,766                | 0                       | 1,221            |
| 1st Quarter 2025        | 801,365               | 15,371                  | 588,357                | 0                       | 3,855            |
| Increase / Decrease     | -508,901              | -10,130                 | -363,591               | -                       | -2,634           |
| % Difference            | -63.5                 | -65.9                   | -61.8                  | NA                      | -68.3            |
| vs 2nd Quarter 2024     | 479.6                 | 965                     | 317.1                  | NA                      | 653.2            |
|                         |                       |                         |                        |                         |                  |
| <u>Volumes Sold</u>     | <u>Gas (MMBtu)</u>    | <u>Condensate (BBL)</u> | <u>NGLs (Gallons)</u>  | <u>Oil (BBL)</u>        |                  |
| 2nd Quarter 2025        | 253,452               | 5,241                   | 224,766                | 0                       |                  |
| 1st Quarter 2025        | 693,097               | 15,371                  | 588,357                | 0                       |                  |
| Increase / Decrease     | -439,645              | -10,130                 | -363,591               | 0                       |                  |
| % Difference            | -63.4                 | -65.9                   | -61.8                  | NA                      |                  |
| vs 2nd Quarter 2024     | 499.2                 | 966.0                   | 317.08                 | NA                      |                  |
|                         |                       |                         |                        |                         |                  |

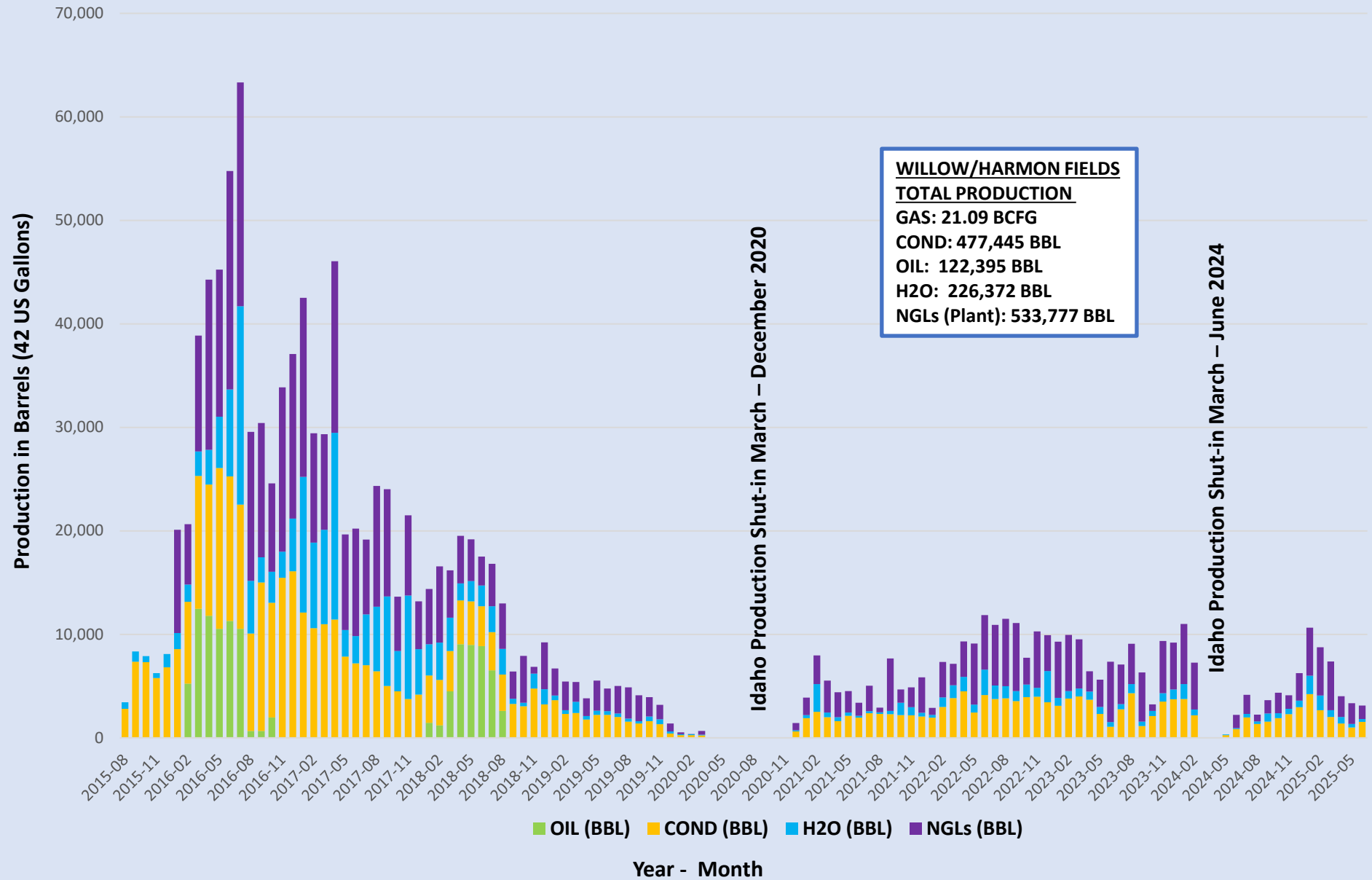
\*Denotes Plant Production from Highway 30 Facility

\*\*No oil has been produced from western Idaho since September 2018

## Western Idaho Production - August 2015 to Present



## Western Idaho Production Liquids Output - August 2015 to Present



# WILLOW FIELD PRODUCTION HISTORY

## WILLOW FIELD

### TOTAL PRODUCTION

GAS: 13.45 BCFG

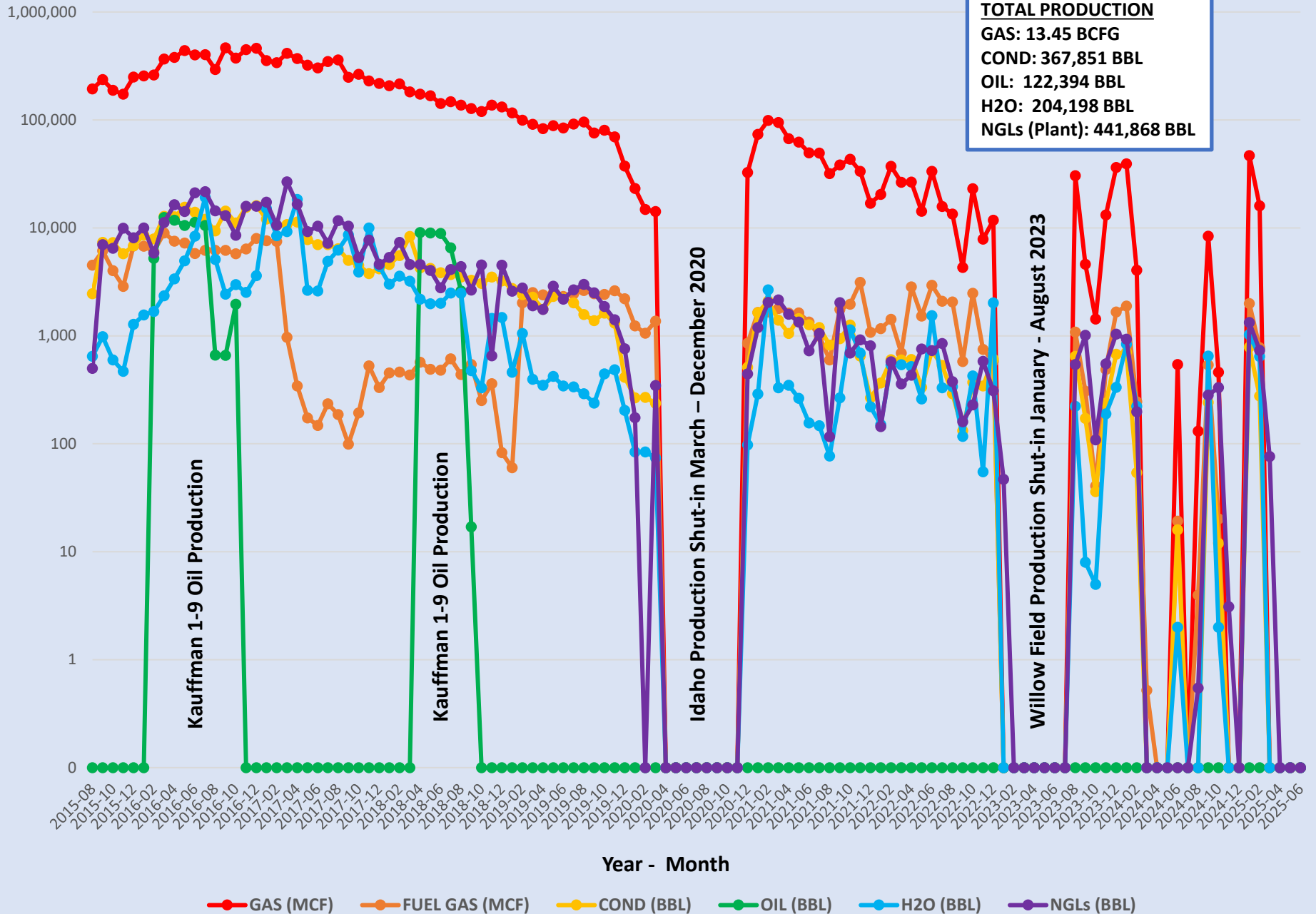
COND: 367,851 BBL

OIL: 122,394 BBL

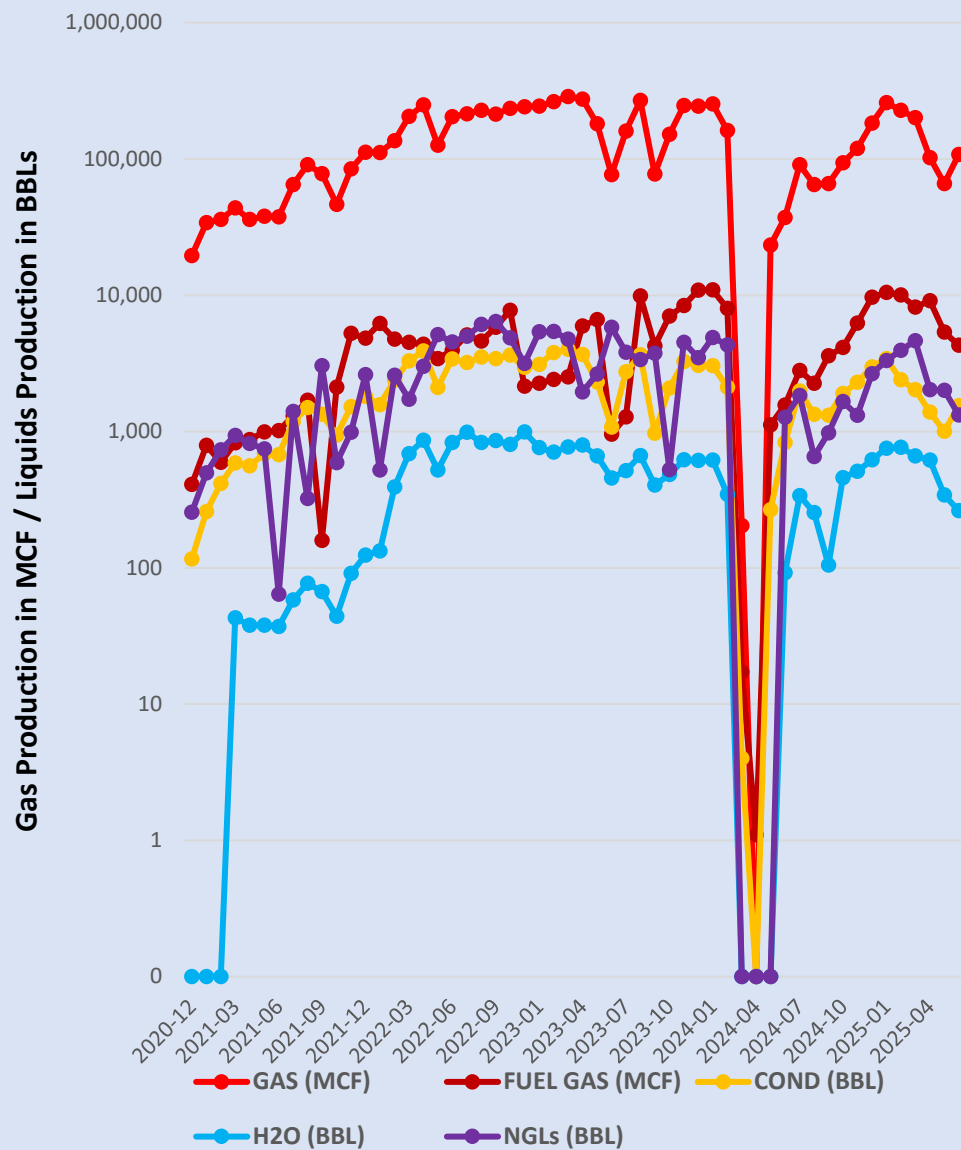
H2O: 204,198 BBL

NGLs (Plant): 441,868 BBL

Gas Production in MCF / Liquids Production in BBLs



## HARMON FIELD PRODUCTION HISTORY



**HARMON FIELD**  
**TOTAL PRODUCTION**  
GAS: 7.63 BCFG  
COND: 112,215 BBL  
OIL: 0 BBL  
H2O: 23,536 BBL  
NGLs (Plant): 140,665 BBL

**NOTE:** The horizontal Year-Month scale has been compressed to approximate the same scale as the Willow Field and Western Idaho Production Chart for visual comparison purposes.

Year - Month

# Plant – Transportation – Sold Volumes

1-Year Running Totals – July 2024 through June 2025\*

|                               |                                 |   |                              |                                    |                                       |
|-------------------------------|---------------------------------|---|------------------------------|------------------------------------|---------------------------------------|
| <u>Residue Gas (MCF)</u>      |                                 |   | <u>Gas Sold (MMBtu)</u>      | <u>Produced vs Sold (Variance)</u> |                                       |
| 1,787,037                     |                                 |   | 1,541,570                    | 13.7%                              |                                       |
| <u>Plant Condensate (BBL)</u> | <u>Condensate Transported**</u> | <u>Produced vs Transported (Variance)</u> | <u>Condensate Sold (BBL)</u> | <u>Produced vs Sold (Variance)</u> | <u>Transported vs Sold (Variance)</u> |
| 32,767                        | 32,766                          | 0.0%                                      | 32,766                       | 0.0%                               | 0.0%                                  |
| <u>Plant NGLs (Gallons)</u>   | <u>NGLs Transported</u>         | <u>Produced vs Transported (Variance)</u> | <u>NGLs Sold (Gallons)</u>   | <u>Produced vs Sold (Variance)</u> | <u>Transported vs Sold (Variance)</u> |
| 1,221,809                     | 1,331,066                       | -8.9%                                     | 1,221,809                    | 0.0%                               | 8.2%                                  |
| <u>Oil Produced (BBL)***</u>  | <u>Oil Transported</u>          | <u>Produced vs Transported (Variance)</u> | <u>Oil Sold (BBL)</u>        | <u>Produced vs Sold (Variance)</u> | <u>Transported vs Sold (Variance)</u> |
| 0                             | 0                               | ---                                       | 0                            | ---                                | ---                                   |

Numbers in **RED** indicate variance in excess of 5%

\*Liquids Transportation and Sales Volumes may be delayed 60 to 90 days after production is reported.

\*\*Condensate Transporter is also Purchaser (Pinnacle) since December 2020 field re-start.

\*\*\*No oil has been produced from western Idaho since September 2018



## Well & Permit Activity – 2nd Quarter 2025

| <u>Wells</u> | <u>Active Permits</u> | <u>Drilling wells</u>     | <u>Producing wells</u> | <u>Comments</u>  |                    |
|--------------|-----------------------|---------------------------|------------------------|--|--------------------|
| April        | 14                    | 0                         | 4                      | Fallon #1-11, Barlow #1-14, Dutch Lane #1-13 shut-in; Barlow #3-14 producing |                    |
| May          | 14                    | 0                         | 5                      | Barlow #1-14, Dutch Lane #1-13 producing; Barlow #3-14 shut-in               |                    |
| June         | 14                    | 0                         | 4                      | Irvin #1-19 shut-in  |                    |
|              |                       |                           |                        |  |                    |
| <u>Other</u> | <u>Sundry Notices</u> | <u>Workover / P&amp;A</u> | <u>APDs Received</u>   | <u>APDs Approved</u>   | <u>APDs Denied</u> |
| April        | 0                     | 1                         | 0                      | 0  | 0                  |
| May          | 0                     | 1                         | 0                      | 0  | 0                  |
| June         | 0                     | 0                         | 0                      | 0  | 0                  |

All production at end of June from Harmon Field only. 4 wells producing at a combined average of 3.0 MMCFGD, 43 BCD. Well treatment application for the ML Investments #2-10 received 4/24/2025, approved 5/28/2025.

**TITLE 47  
MINES AND MINING  
CHAPTER 3  
OIL AND GAS WELLS — GEOLOGIC INFORMATION, AND PREVENTION OF  
WASTE**

**§ 47-315(9) The commission shall require the department to perform the following activities on an annual basis:**

- (a) Inspect and report on all active well sites and equipment;**
- (b) Visit and file a report on production and processing facilities; and**
- (c) Submit an opinion as to any areas of concern, as identified on inspection reports.**

# Inspection Activity – 2nd Quarter 2025

- **Well Inspections**
  - 7 well inspections completed
- **Gas Facility Inspections**
  - Little Willow inspected 4/25/2025
- **Outstanding Issues:**
  - Responsibility for Kauffman #1-9, Kauffman #1-34 pad reclamation transferred to surface owners under IDAPA 20.07.02.510.08
  - Plugging operations not completed for Tracy Trust #3-2 (pending additional operations in Payette)
  - Remaining 2025 annual inspections to occur in September and October
- **2025 Total Inspections through 6/30:**
  - 7 Well Inspections
  - 1 Facilities Inspection



Dutch Lane #1-13 annual inspection,  
Harmon Field, Payette County – April 2025.  
Photo courtesy J. Thum

**Please Direct All Questions & Suggestions to the  
IDL Division of Minerals, Navigable Waters, Oil & Gas**

<https://ogcc.idaho.gov/contact-us/>

**Field Tour with  
staff from the  
Governor's Office  
of Energy and  
Mineral Resources  
(OEMR) at the  
Fallon #1-10 well,  
Harmon Field,  
Payette County,  
June 2025. Photo  
courtesy B. Garro.**



**2025 3rd Quarter Report will be provided during 4th Quarter 2025**