

**Quarterly Report to the Commission**  
**Idaho Code § 47-315(9)**  
**Idaho Code § 47-324(6)**

**1st Quarter 2025 (January-March)**



Submitted to the Commission as  
a Supplement to the Secretary's Report June 6, 2025  
James Thum  
Idaho Department of Lands

**TITLE 47  
MINES AND MINING  
CHAPTER 3  
OIL AND GAS WELLS — GEOLOGIC INFORMATION, AND  
PREVENTION OF WASTE**

**§ 47-324(6) The department shall report quarterly to the commission on the produced volumes of oil and gas, sales volumes of oil and gas, and the meeting of industry standards.**

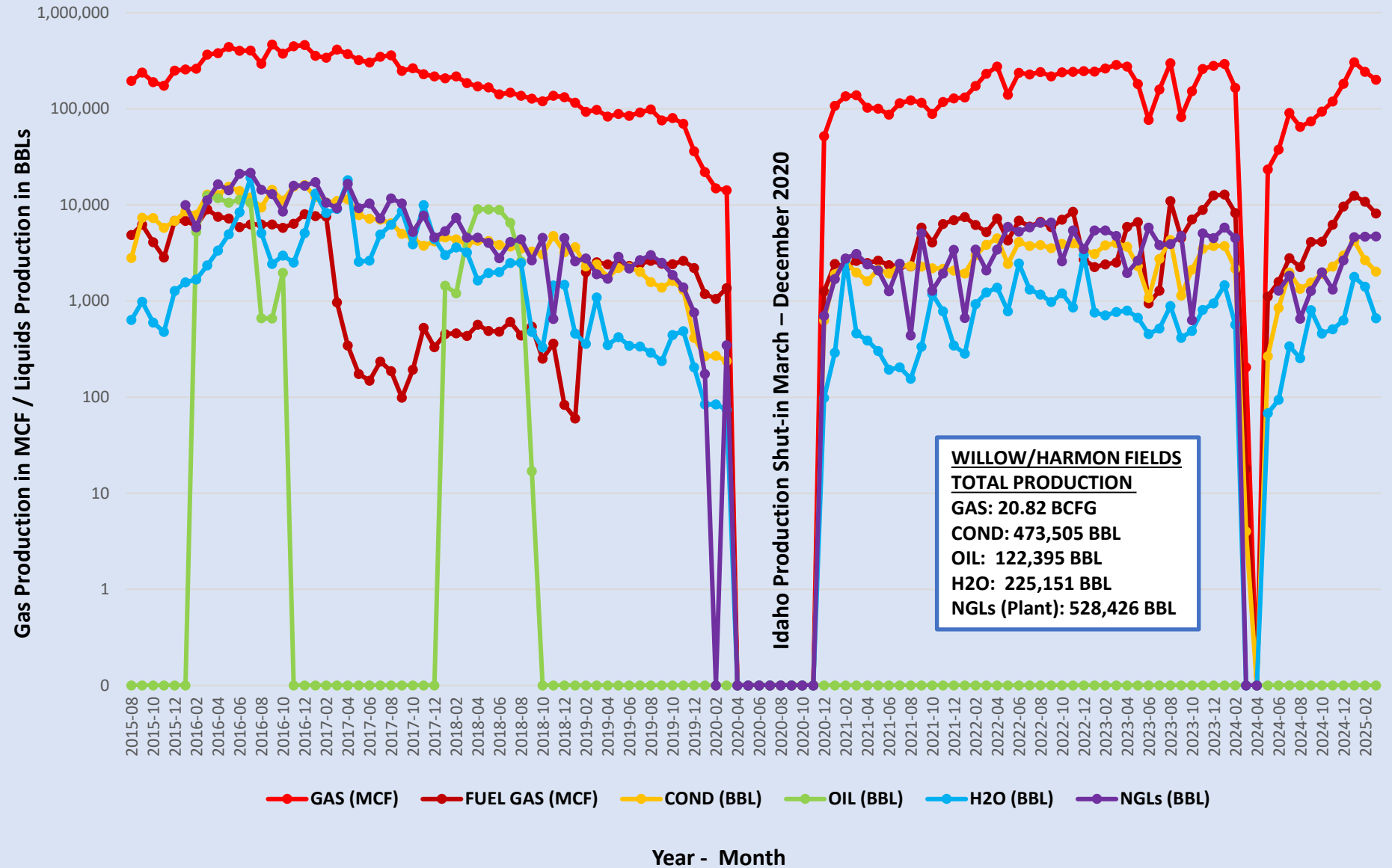
# Volumes Produced & Sold – 1st Quarter 2025

## Comparison to Previous Quarter / Previous Year

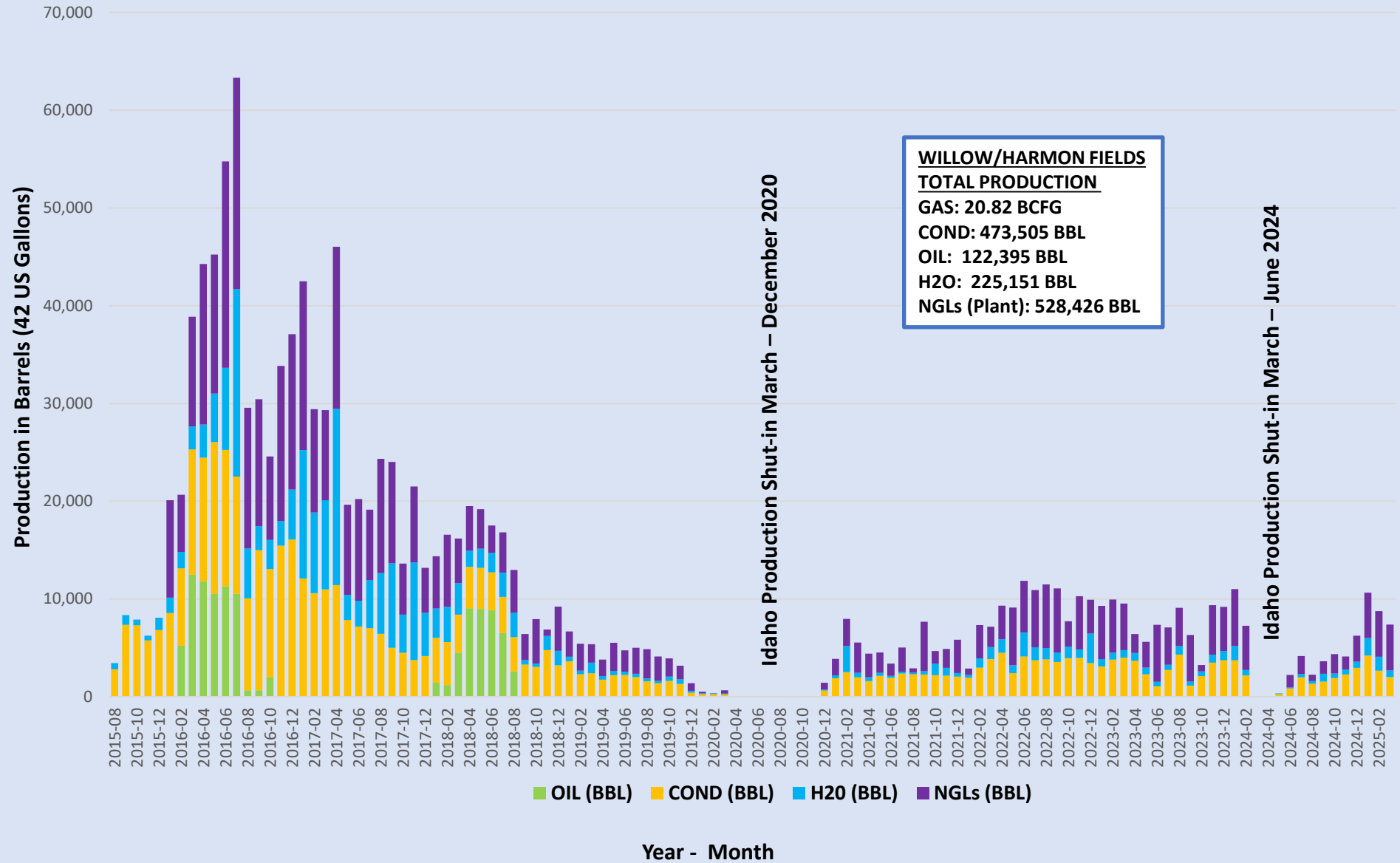
<u>Volumes Produced</u>	<u>Cum. Gas (MCF)</u>	<u>Condensate (BBL)</u>	<u>NGLs (Gallons)*</u>	<u>Cum. Oil (BBL)</u>	<u>H2O (BBL)</u>
1st Quarter 2025	801,365	15,371	588,357	0	3,855
4th Quarter 2024	433,704	7,536	250,437	0	1,597
Increase / Decrease	367,661	7,835	337,920	-	2,258
% Difference	84.8	104.0	134.9	NA	141.4
vs 1st Quarter 2024	61.0	69.0	35.5	NA	90.3
<u>Volumes Sold</u>	<u>Gas (MMBtu)</u>	<u>Condensate (BBL)</u>	<u>NGLs (Gallons)</u>	<u>Oil (BBL)</u>	
1st Quarter 2025	693,097	15,371	588,357	0	
4th Quarter 2024	375,361	7,535	250,437	0	
Increase / Decrease	317,736	7,836	337,920	0	
% Difference	84.6	104.0	134.9	NA	
vs 1st Quarter 2024	60.9	69.0	35.48	NA	

\*Denotes Plant Production from Highway 30 Facility

## Western Idaho Production - August 2015 to Present



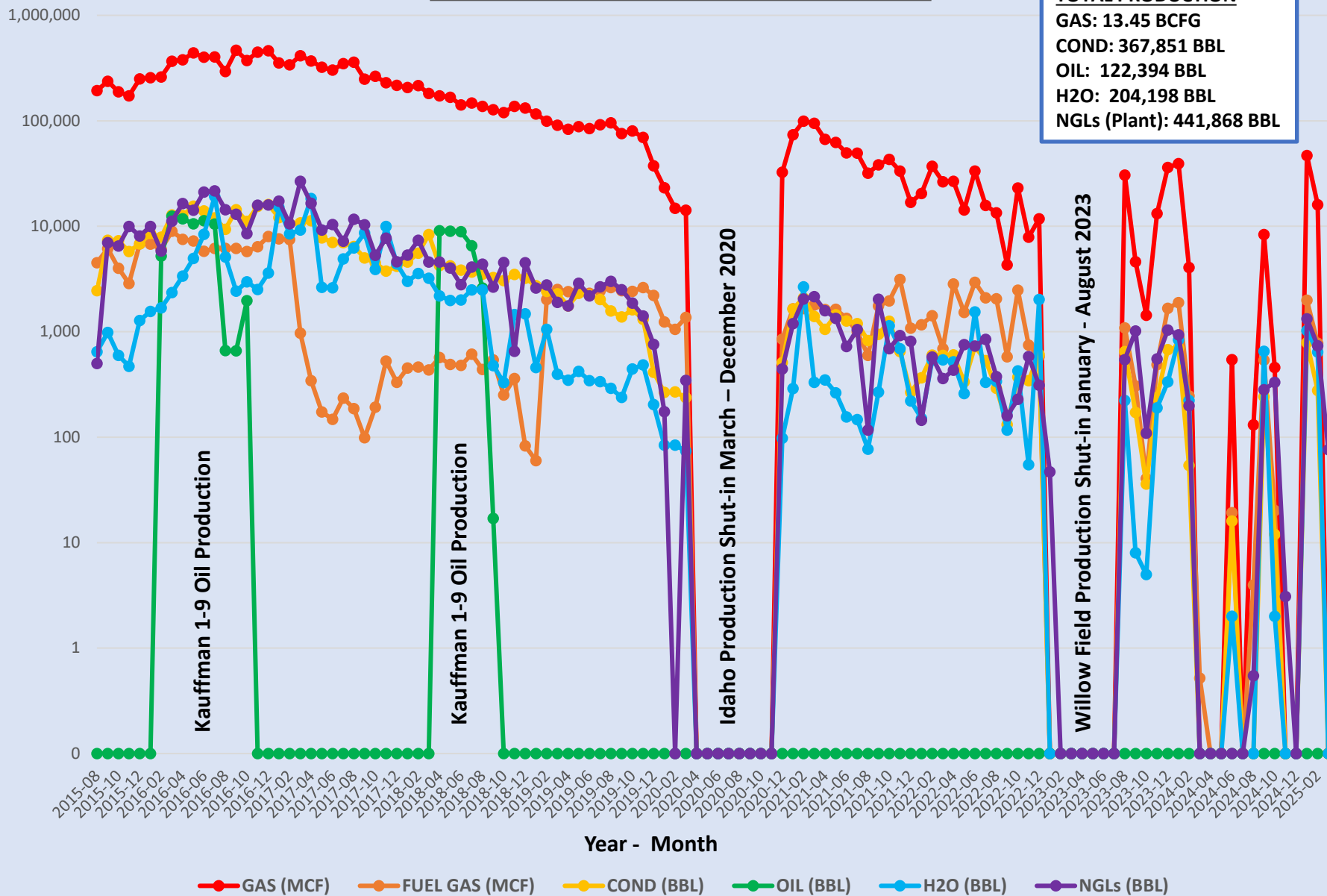
## Western Idaho Production Liquids Output - August 2015 to Present



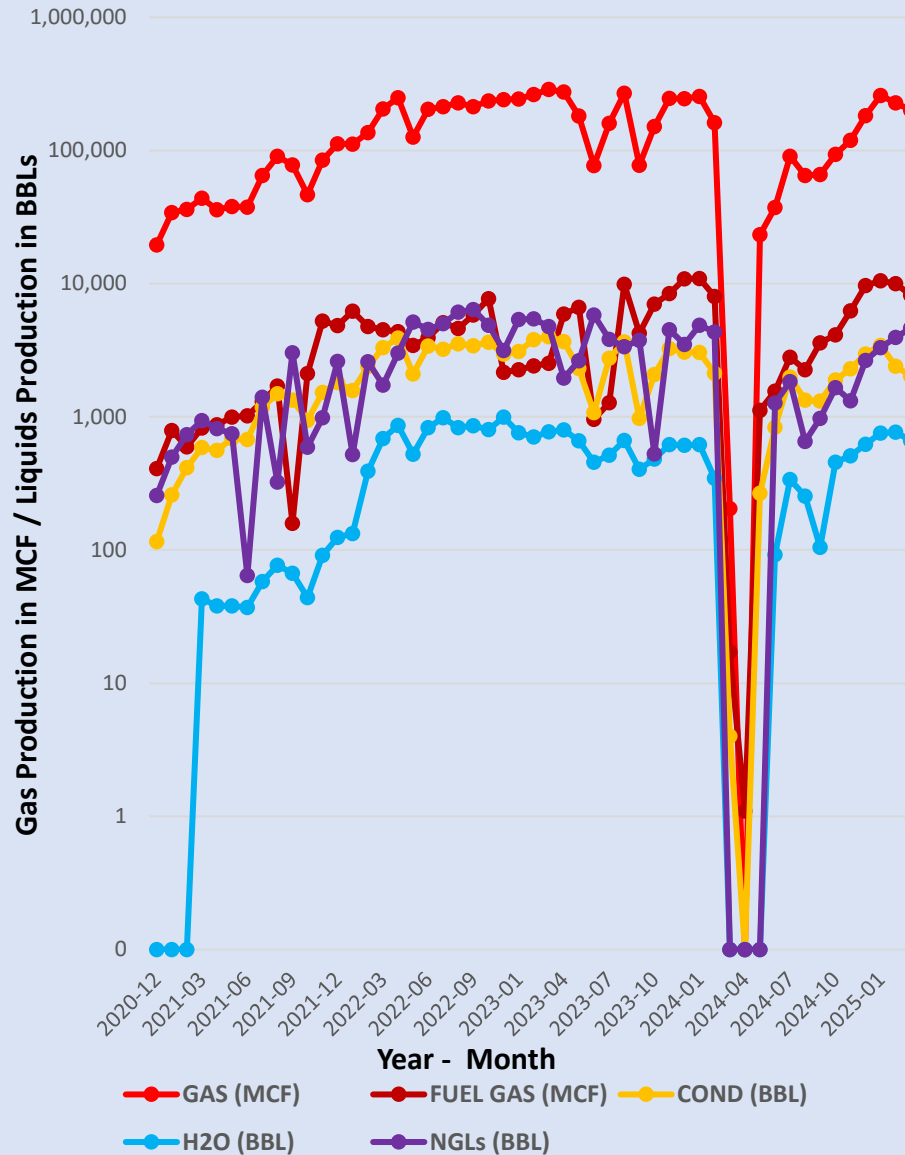
# WILLOW FIELD PRODUCTION HISTORY

**WILLOW FIELD**  
**TOTAL PRODUCTION**  
**GAS: 13.45 BCFG**  
**COND: 367,851 BBL**  
**OIL: 122,394 BBL**  
**H2O: 204,198 BBL**  
**NGLs (Plant): 441,868 BBL**

Gas Production in MCF / Liquids Production in BBLs



## HARMON FIELD PRODUCTION HISTORY



**HARMON FIELD**  
**TOTAL PRODUCTION**  
GAS: 7.35 BCFG  
COND: 108,275 BBL  
OIL: 0 BBL  
H2O: 22,315 BBL  
NGLs (Plant): 135,313 BBL

**NOTE:** The horizontal Year-Month scale has been compressed to approximate the same scale as the Willow Field and Western Idaho Production Chart for visual comparison purposes.

# Plant – Transportation – Sold Volumes

1-Year Running Totals – January 2024 through January 2025\*

<u>Residue Gas (MCF)</u>			<u>Gas Sold (MMBtu)</u>	<u>Produced vs Sold (Variance)</u>	
1,545,030			1,330,416	-13.9%	
<u>Plant Condensate (BBL)</u>	<u>Condensate Transported**</u>	<u>Produced vs Transported (Variance)</u>	<u>Condensate Sold (BBL)</u>	<u>Produced vs Sold (Variance)</u>	<u>Transported vs Sold (Variance)</u>
28,018	28,017	0.0%	28,017	0.0%	0.0%
<u>Plant NGLs (Gallons)</u>	<u>NGLs Transported</u>	<u>Produced vs Transported (Variance)</u>	<u>NGLs Sold (Gallons)</u>	<u>Produced vs Sold (Variance)</u>	<u>Transported vs Sold (Variance)</u>
1,050,933	1,160,360	-10.4%	1,050,933	0.0%	9.4%
<u>Oil Produced (BBL)</u>	<u>Oil Transported</u>	<u>Produced vs Transported (Variance)</u>	<u>Oil Sold (BBL)</u>	<u>Produced vs Sold (Variance)</u>	<u>Transported vs Sold (Variance)</u>
0	0	---	0	---	---

Numbers in **RED** indicate variance in excess of 5%

\*Liquids Transportation and Sales Volumes may be delayed 60 to 90 days after production is reported.

\*\*Condensate Transporter is also Purchaser (Pinnacle) since December 2020 field re-start.



## Well & Permit Activity – 1st Quarter 2025

<u>Wells</u>	<u>Active Permits*</u>	<u>Drilling wells</u>	<u>Producing wells</u>	<u>Comments</u>	
January	14	0	8		
February	14	0	8		
March	14	0	6	ML Investments #2-10 shut-in ML Investments #3-10 shut-in	
<u>Other</u>	<u>Sundry Notices</u>	<u>Workover / P&amp;A</u>	<u>APDs Received</u>	<u>APDs Approved</u>	<u>APDs Denied</u>
January	0	0	0	0	0
February	0	0	0	0	0
March	0	0	0	0	0

All production at end of March from Harmon Field only. 5 wells producing at a combined average of 8.3 MMCFGD, 99 BCD.

**TITLE 47  
MINES AND MINING  
CHAPTER 3  
OIL AND GAS WELLS — GEOLOGIC INFORMATION, AND PREVENTION OF  
WASTE**

**§ 47-315(9) The commission shall require the department to perform the following activities on an annual basis:**

- (a) Inspect and report on all active well sites and equipment;**
- (b) Visit and file a report on production and processing facilities; and**
- (c) Submit an opinion as to any areas of concern, as identified on inspection reports.**

# Inspection Activity – 1st Quarter 2025

- **Well Inspections**
  - 0 well Inspections completed (2<sup>nd</sup> Quarter pending)
- **Gas Facility Inspections**
  - Little Willow Inspection pending (2<sup>nd</sup> Quarter)
- **Outstanding Issues:**
  - Pad reclamation for Kauffman #1-9 and Kauffman #1-34 pending; deadline is August 2025
  - Plugging operations not completed for Tracy Trust #3-2
  - 2025 annual inspections to occur in in April and September
- **2025 Total Inspections through 3/31:**
  - 0 Well Inspections
  - 0 Facilities Inspection



ML Investments #1-3 annual inspection, Willow Field, Payette County – October 2024. Photo courtesy J. Thum

**Please Direct All Questions & Suggestions to the  
IDL Division of Minerals, Navigable Waters, Oil & Gas**

<https://ogcc.idaho.gov/contact-us/>

**Field Tour with OGCC  
Commissioners at the  
Fallon #1-10 well,  
Harmon Field, Payette  
County, May 2025.  
Photo courtesy J. Thum**



**2025 2nd Quarter Report will be provided during 3rd Quarter 2025**