



**Cement Bond Log
Gamma Ray
CCL**

Company Snake River Oil & Gas, LLC
Well Irvin #1-19
Field Wildcat
County Payette State Idaho

RECEIVED
By *jthum* at 11:38 am, Jan 20, 2023

Company Snake River Oil & Gas, LLC
Well Irvin #1-19
Field Wildcat
County Payette
State Idaho

Location: SHL: 904' FSL & 925' FWL
API #: 11-075-20039
Other Services
Permanent Datum SEC 17 TWP 8N RGE 4W
Log Measured From Ground Level Elevation 2192'
Drilling Measured From K.B., 12.5' above P.D., K.B. 2204.5'
Elevation G.L. 2192'

Date	12-Dec-2022
Run Number	1
Depth Driller	5500'
Depth Logger	4460'
Bottom Logged Interval	4460'
Top Log Interval	Surface
Casing Driller	1130'
Casing Logger	1127'
Bit Size	8.5
Type Fluid in Hole	4% KCL, 4% Calcium Chloride
Density / Viscosity	8.5
pH / Fluid Loss	NA
Source of Sample	NA
Rm @ Meas. Temp	NA
Rmf @ Meas. Temp	NA
Rmc @ Meas. Temp	NA
Source of Rmf / Rmc	NA
Rm @ BHT	NA
Time Circulation Stopped	1530
Time Logger on Bottom	0900
Maximum Recorded Temperature	240 F
Equipment Number	103
Location	Vernal
Recorded By	Zephen Cramer
Witnessed By	Clint Harman

<<< Fold Here >>>

All interpretations are opinions based on inferences from electrical or other measurements and we cannot and do not guarantee the accuracy or correctness of any interpretation, and we shall not, except in the case of gross or willful negligence on our part, be liable or responsible for any loss, costs, damages, or expenses incurred or sustained by anyone resulting from any interpretation made by any of our officers, agents or employees. These interpretations are also subject to our general terms and conditions set out in our current Price Schedule.

Comments

Log Correlated to Open Hole Compact Log
Log Recorded by: Extreme Wireline
Log Dated: 10/17/2022
Crew: Hansen, Rose



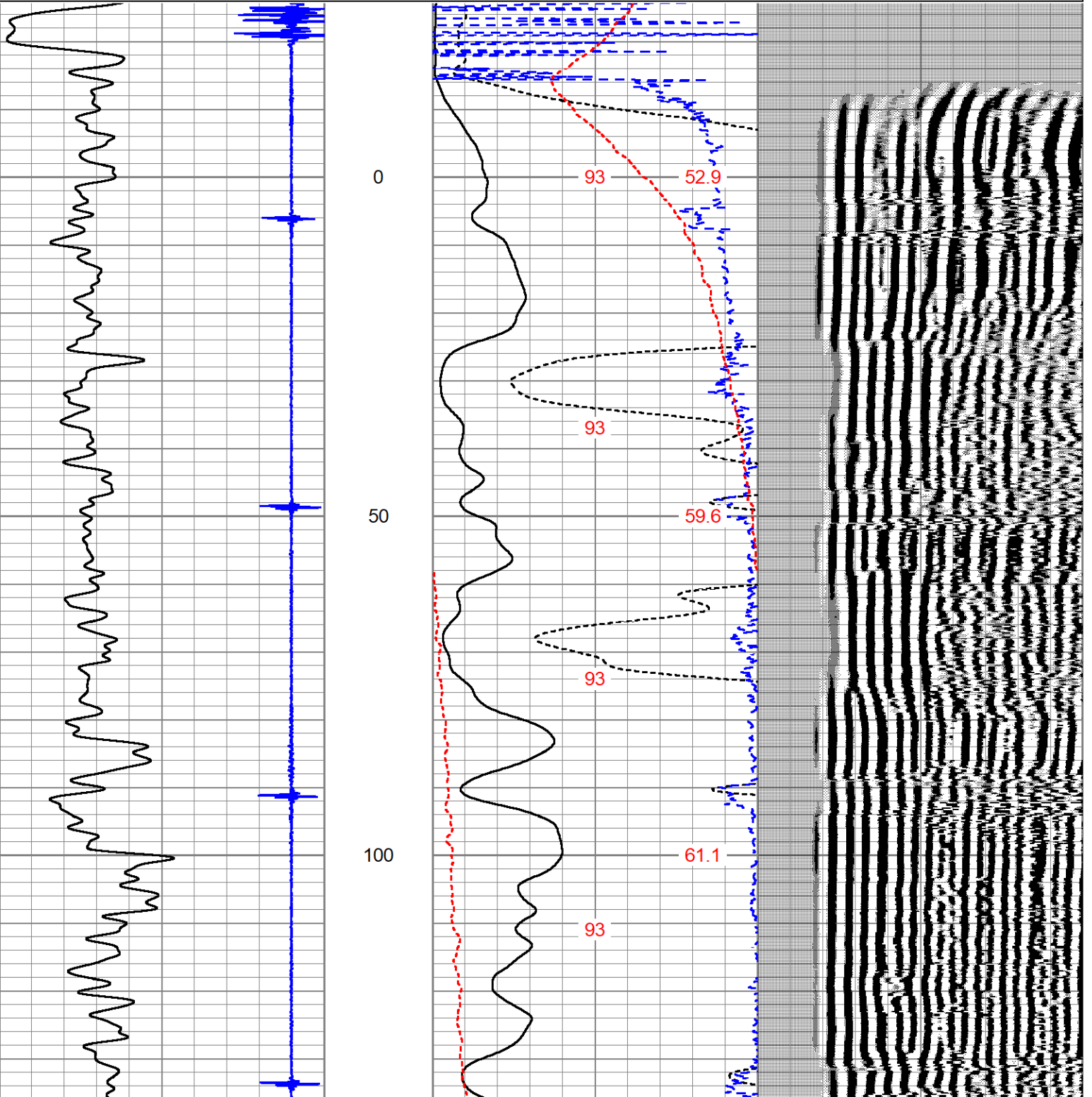
Main Pass

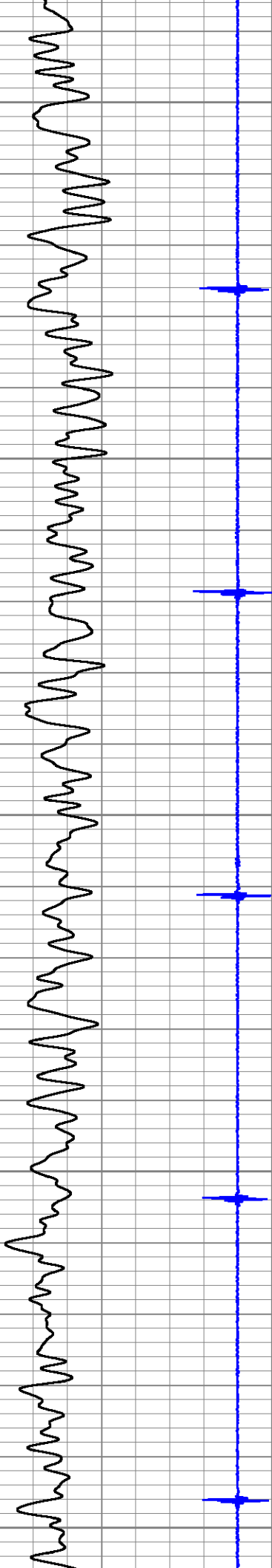
Database File irvin 1-19.db
 Dataset Pathname pass3
 Presentation Format cblexreme2
 Dataset Creation Mon Dec 12 09:14:55 2022
 Charted by Depth in Feet scaled 1:240

-9	CCL	1
0	GR (GAPI)	150

0	AMP (mV)	100
0	AMPx10 (mV)	10
350	TT (usec)	250
80	GCT_TEMP (degF)	100
	TEMP (degF)	TEMP (degF)
		GCT_Temp (degF)

200 VDL (usec) 1200





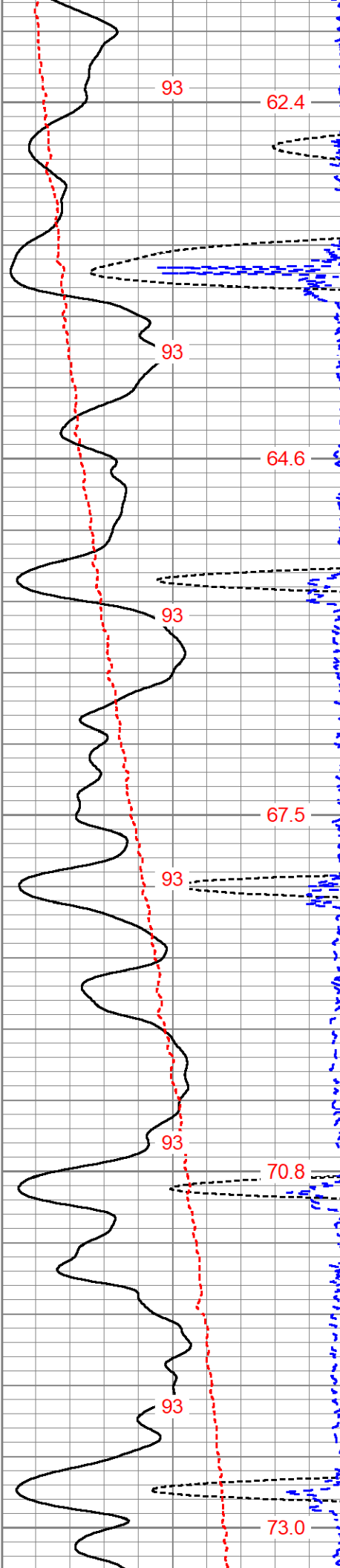
150

200

250

300

350



93

62.4

93

64.6

93

67.5

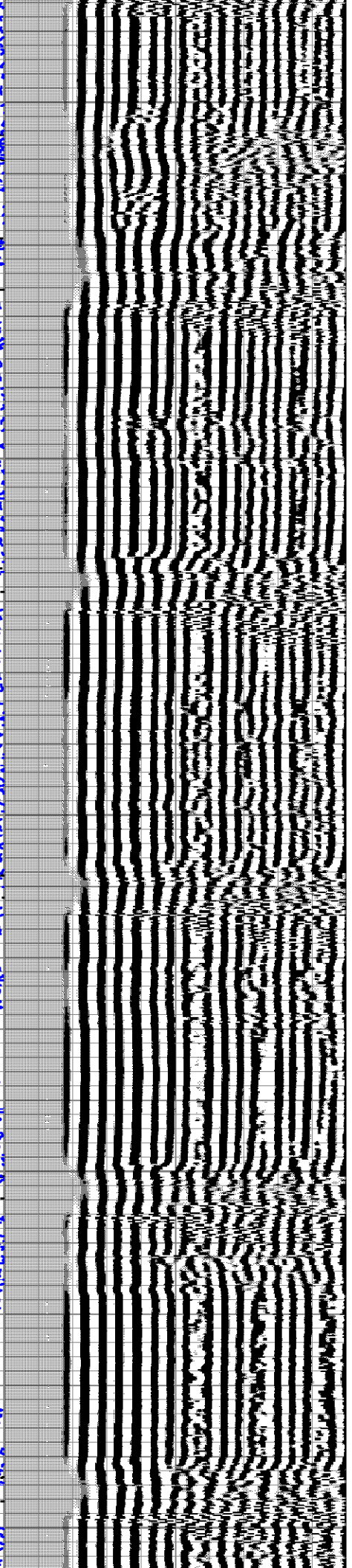
93

93

70.8

93

73.0



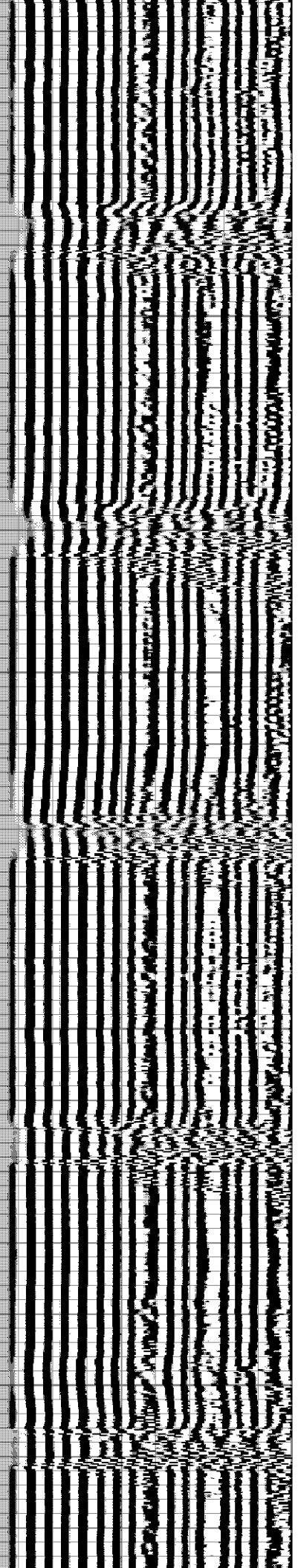
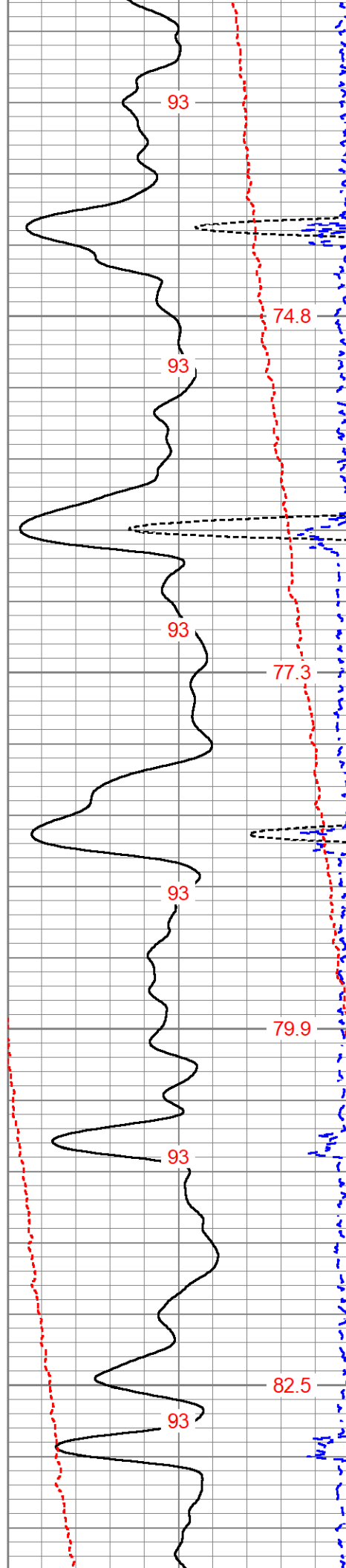


400

450

500

550



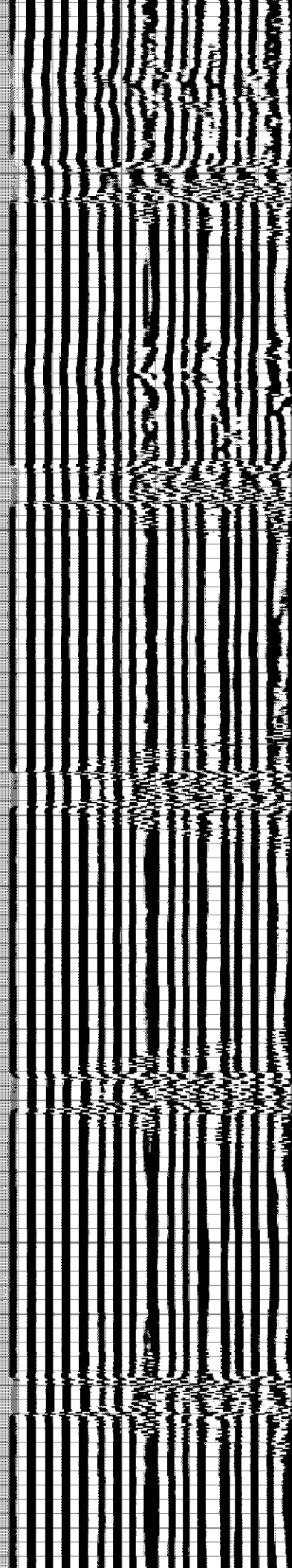
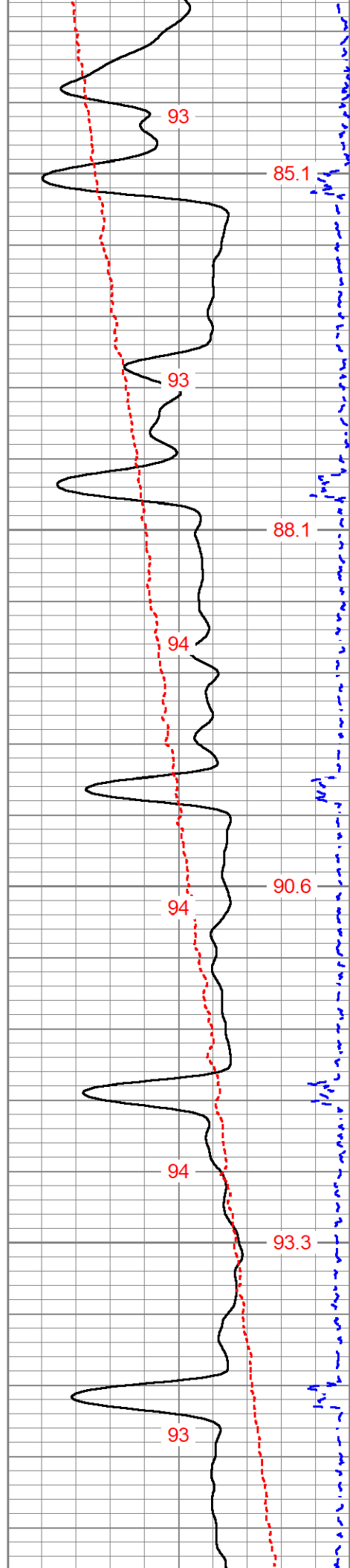


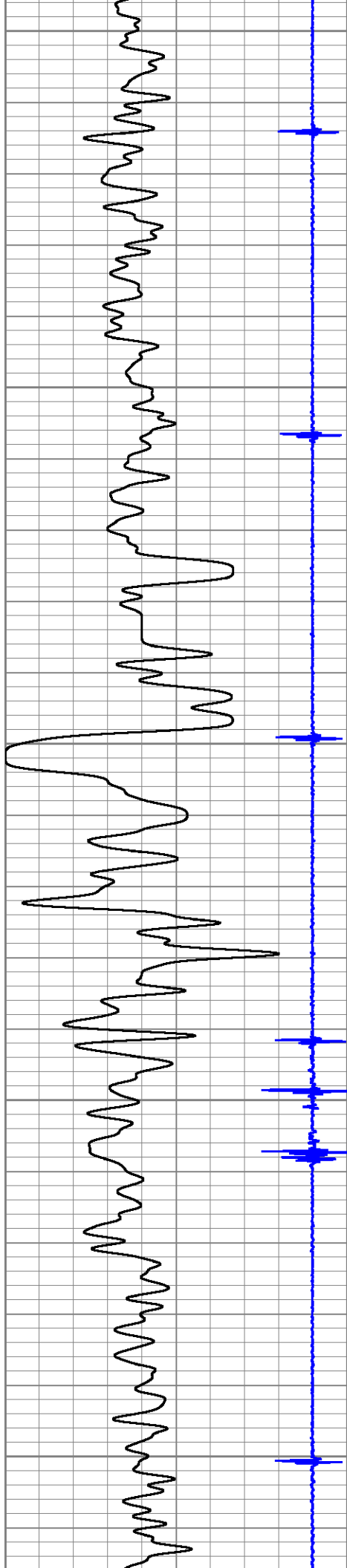
600

650

700

750





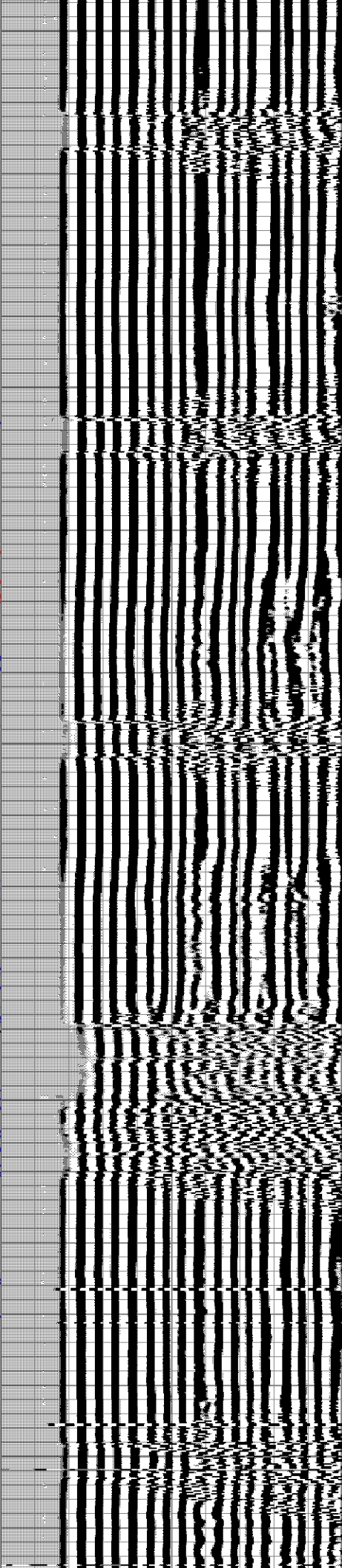
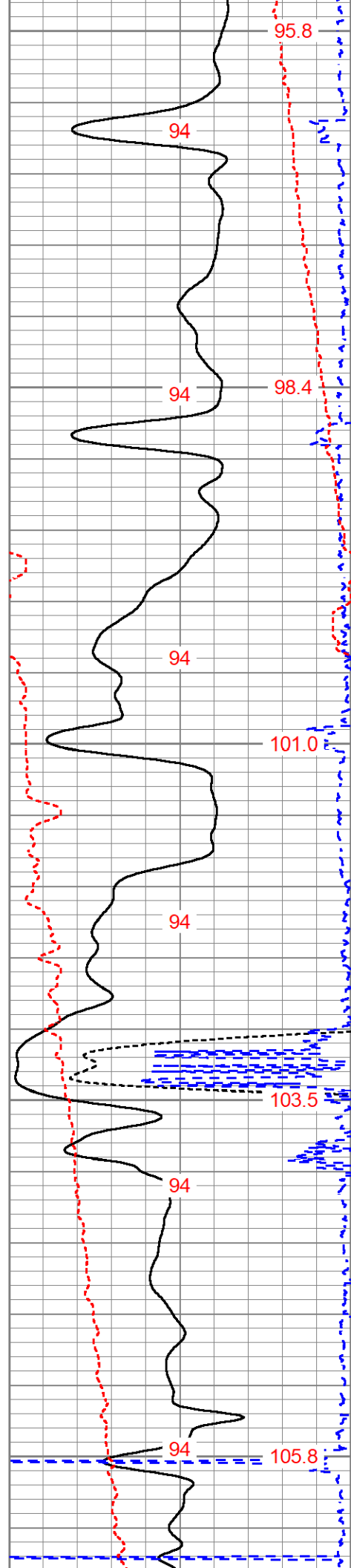
800

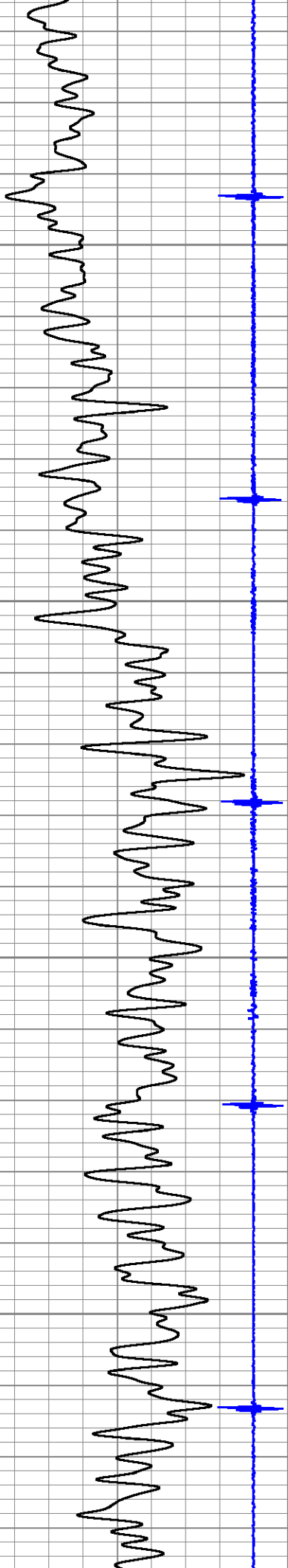
850

900

950

1000



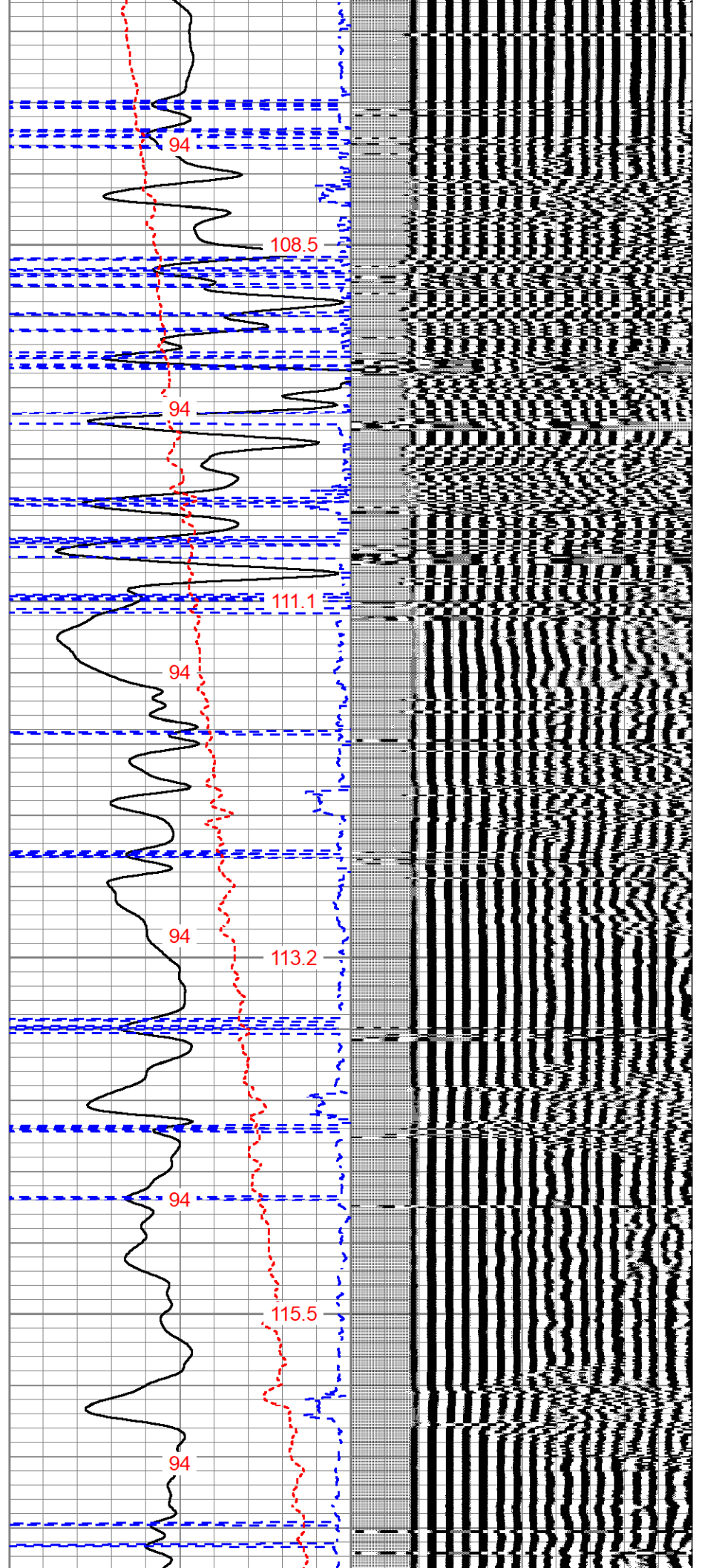


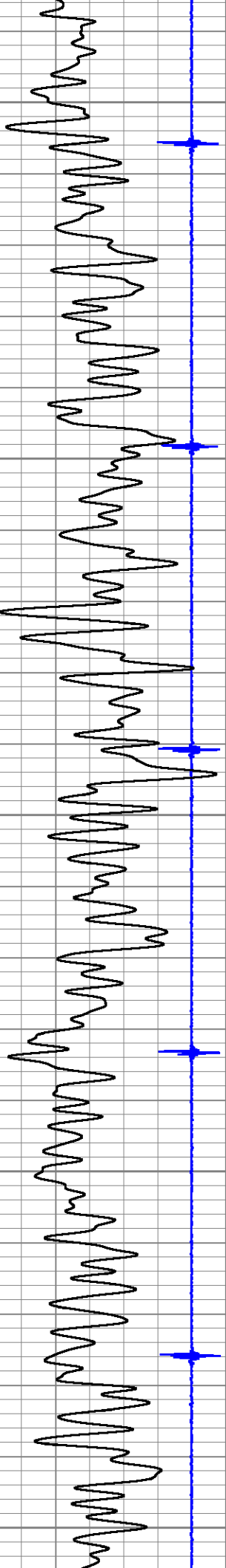
1050

1100

1150

1200





1250

118.2

94

1300

119.8

94

94

1350

122.6

94

1400

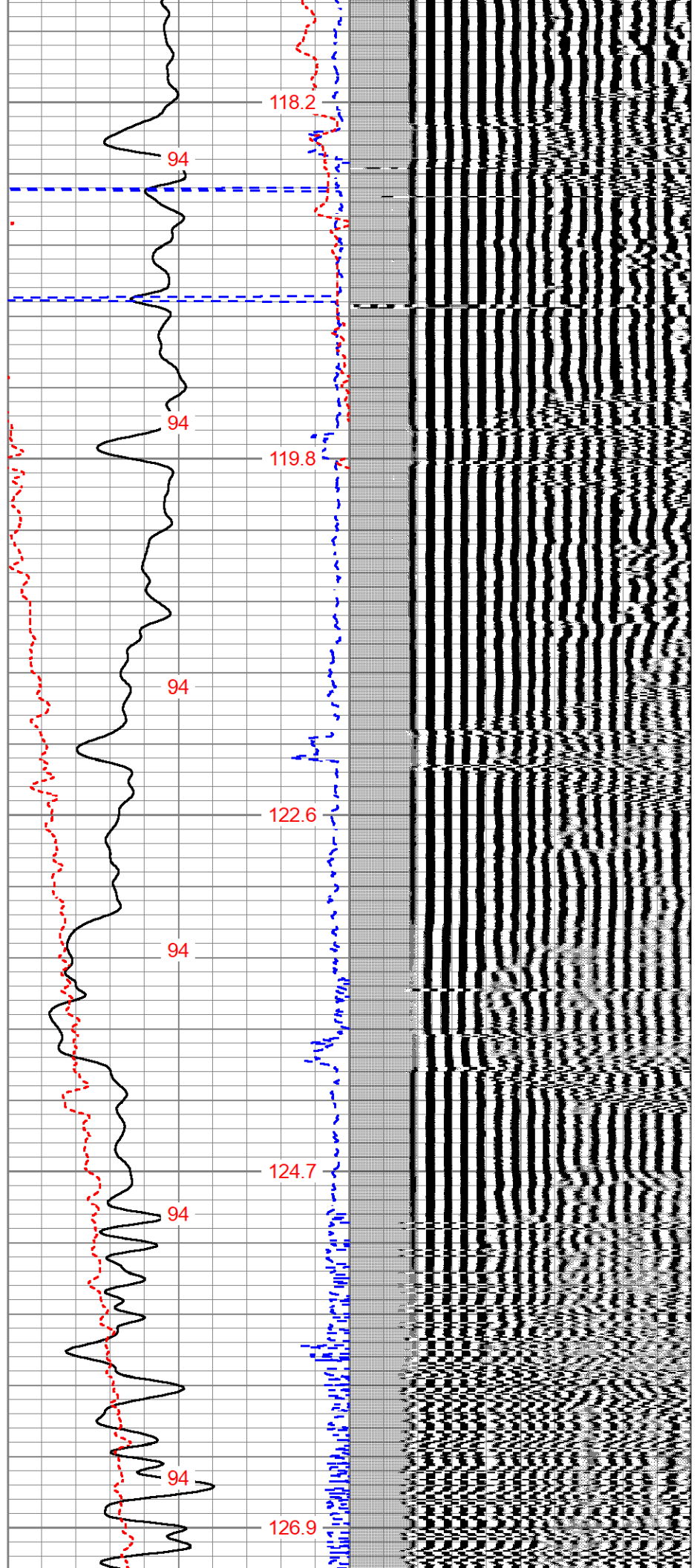
124.7

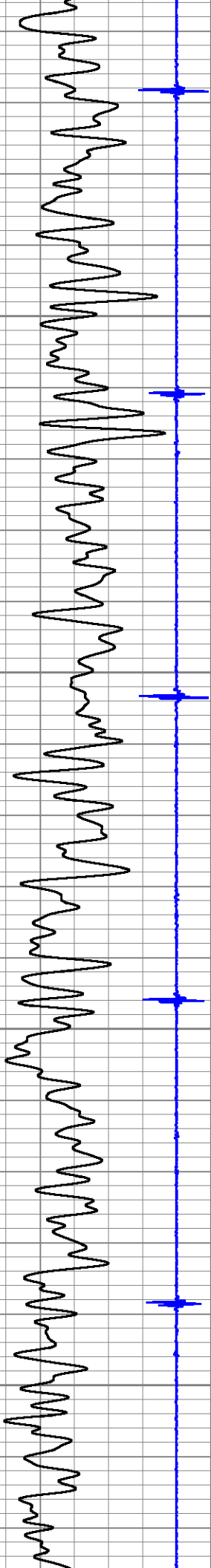
94

1450

126.9

94



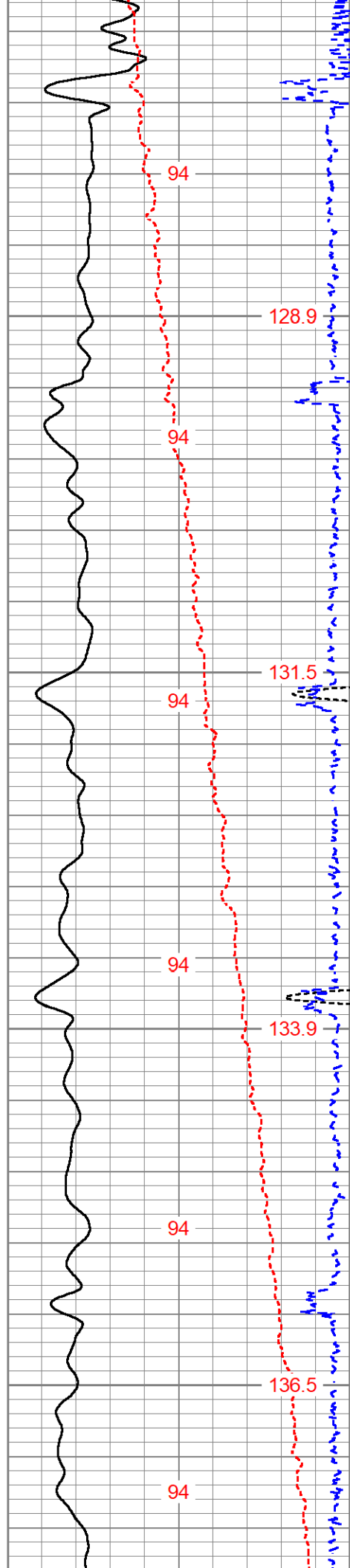


1500

1550

1600

1650



94

128.9

94

131.5

94

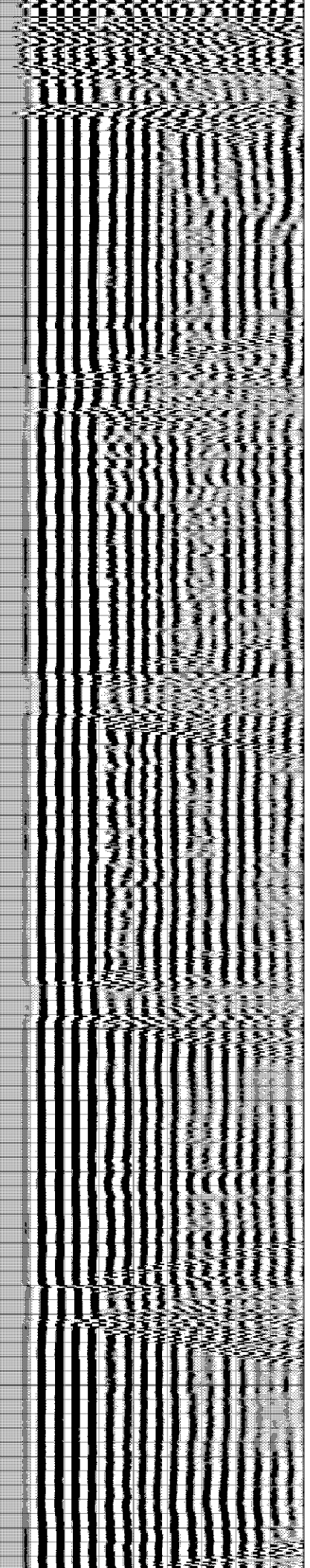
94

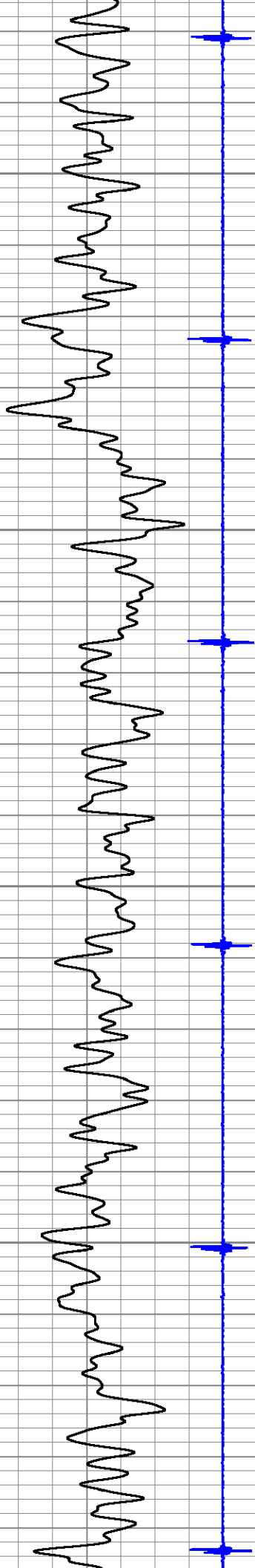
133.9

94

136.5

94



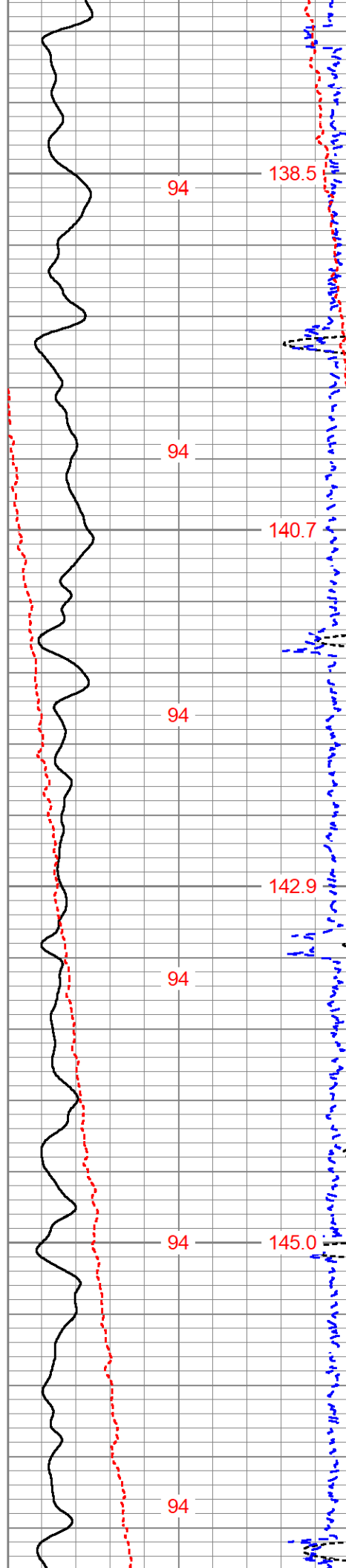


1700

1750

1800

1850



94

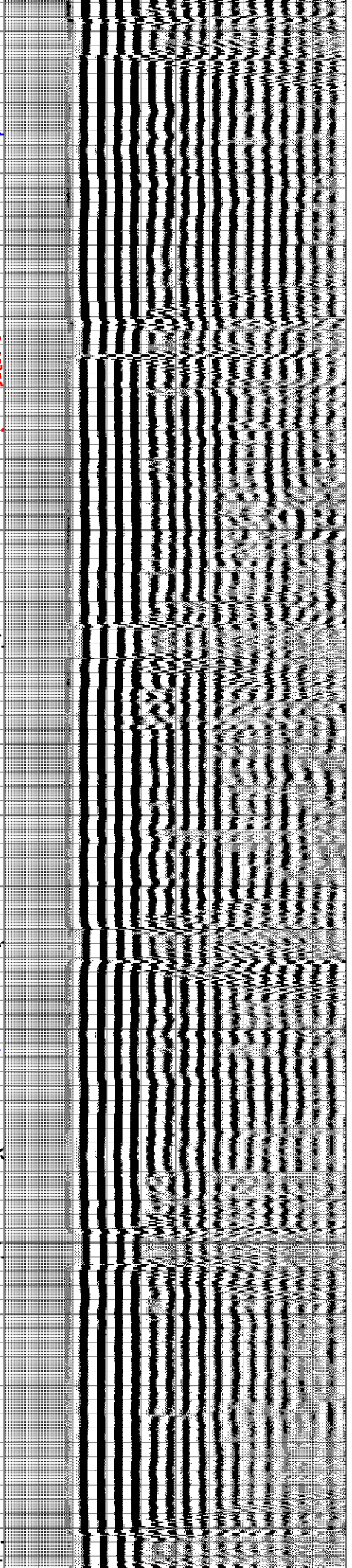
94

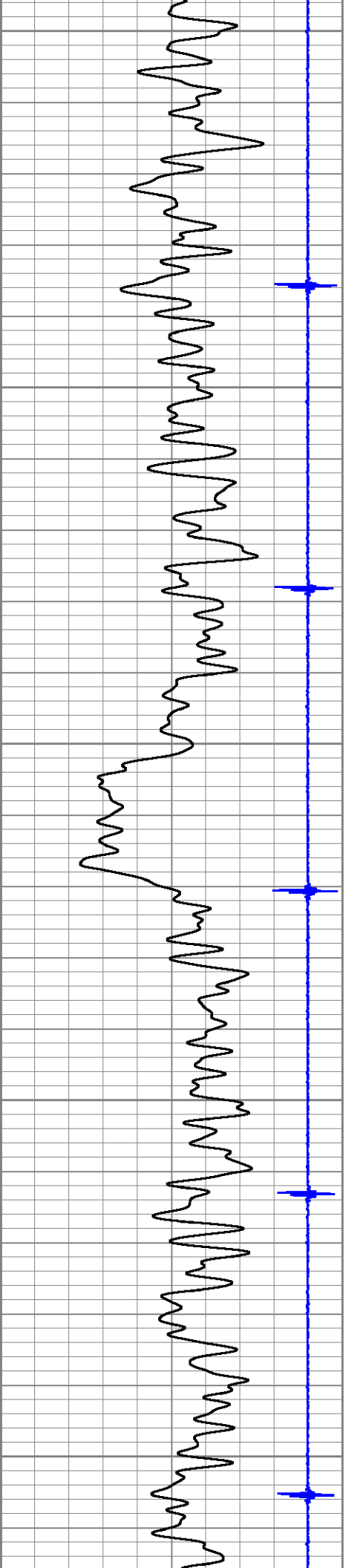
94

94

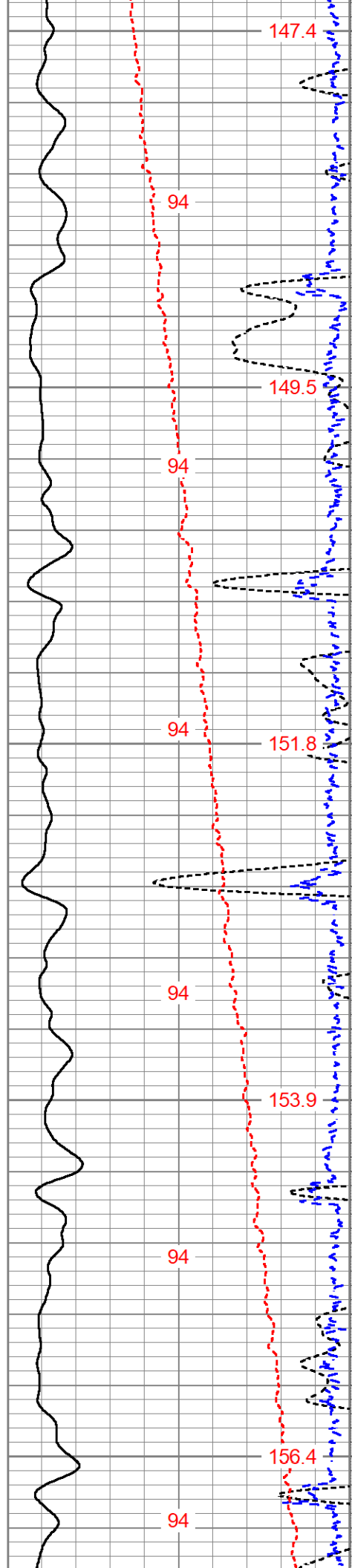
94

94

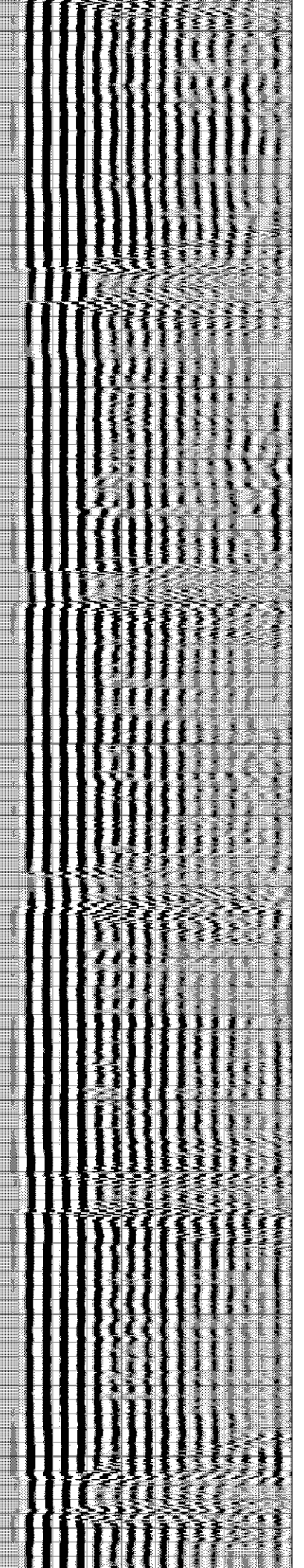




1900
1950
2000
2050
2100



147.4
94
149.5
94
151.8
94
153.9
94
156.4
94



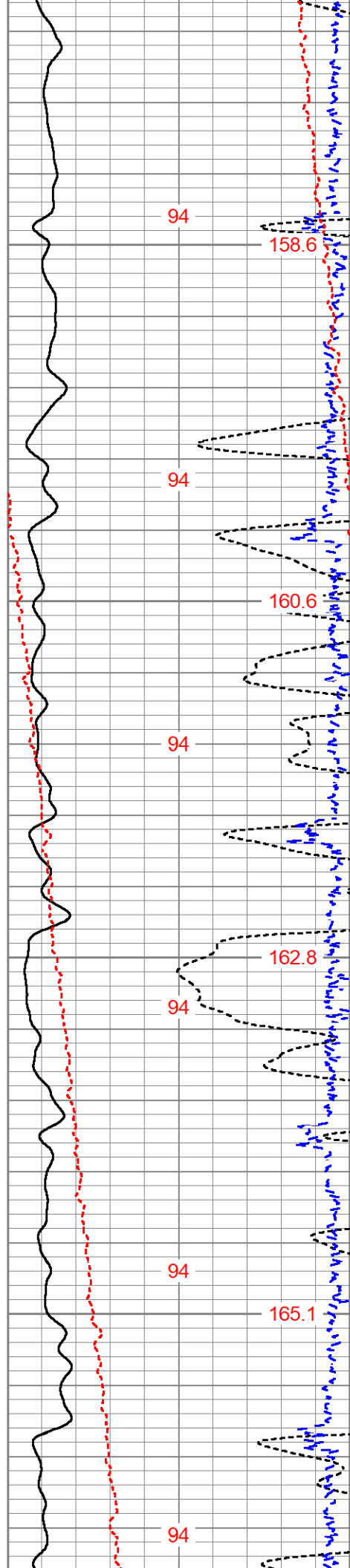


2150

2200

2250

2300



94

158.6

94

160.6

94

162.8

94

94

165.1

94



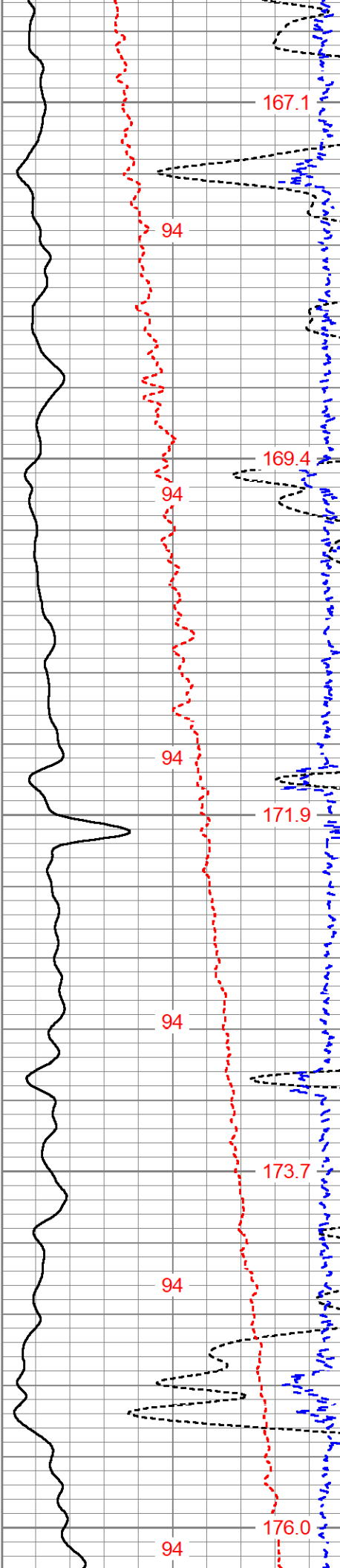
2350

2400

2450

2500

2550



167.1

94

169.4

94

94

171.9

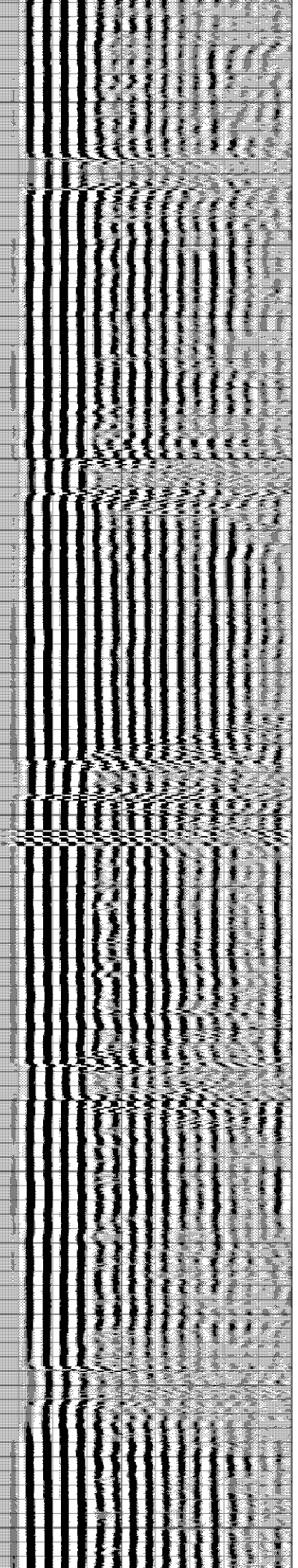
94

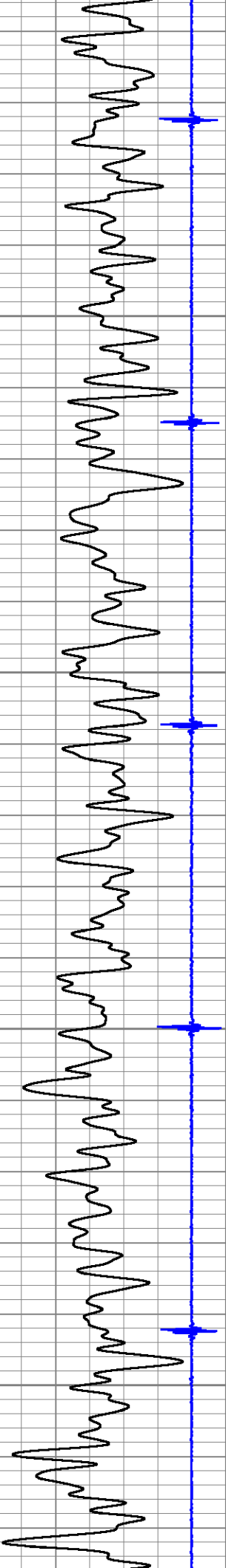
173.7

94

176.0

94



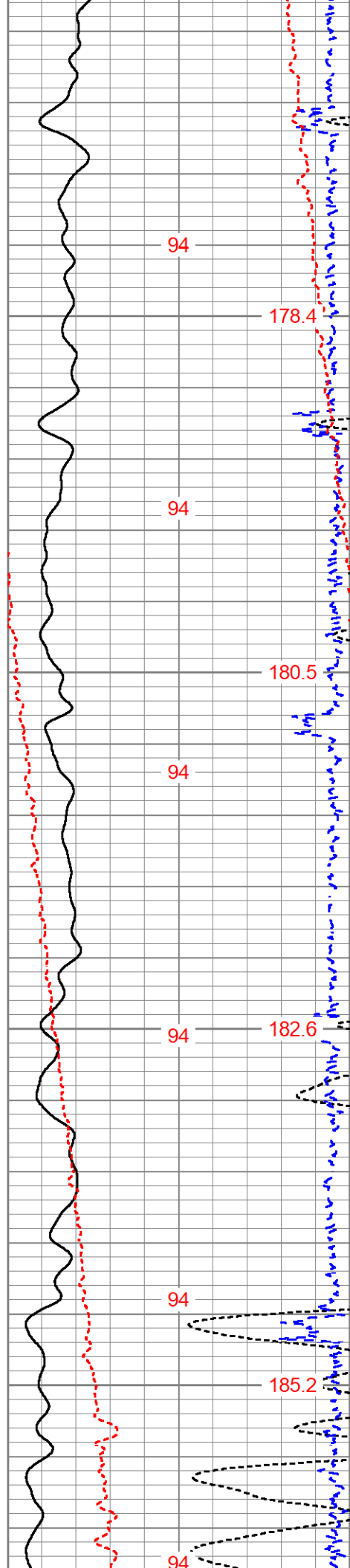


2600

2650

2700

2750



94

178.4

94

180.5

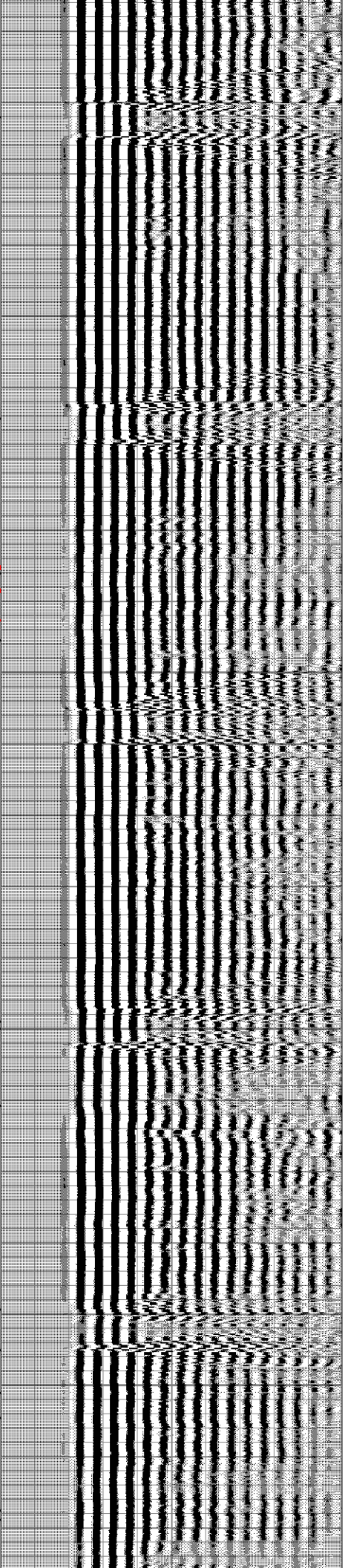
94

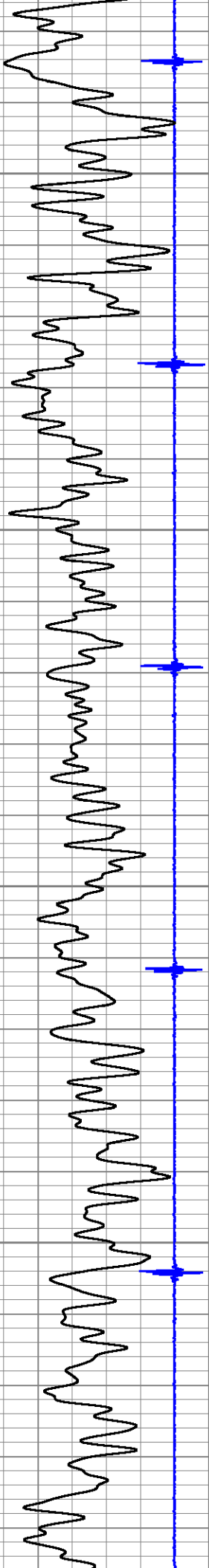
182.6

94

185.2

94



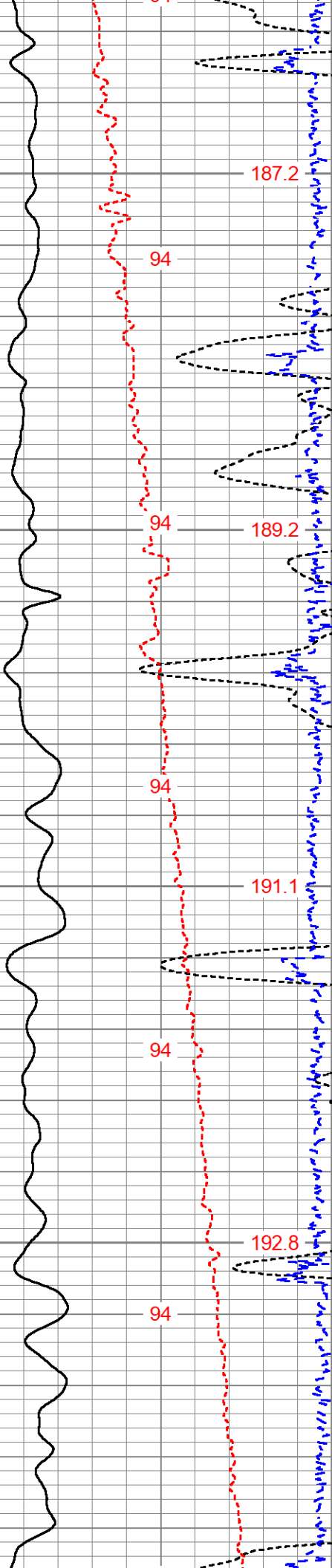


2800

2850

2900

2950



187.2

94

189.2

94

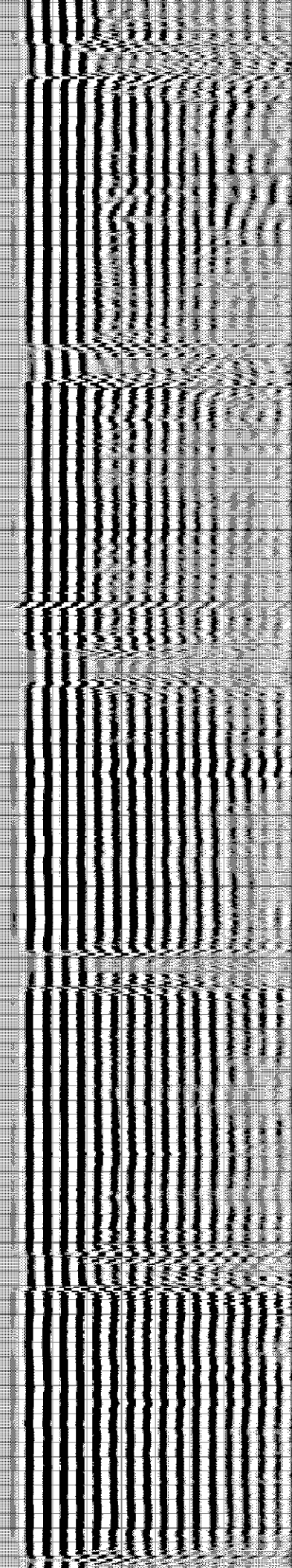
94

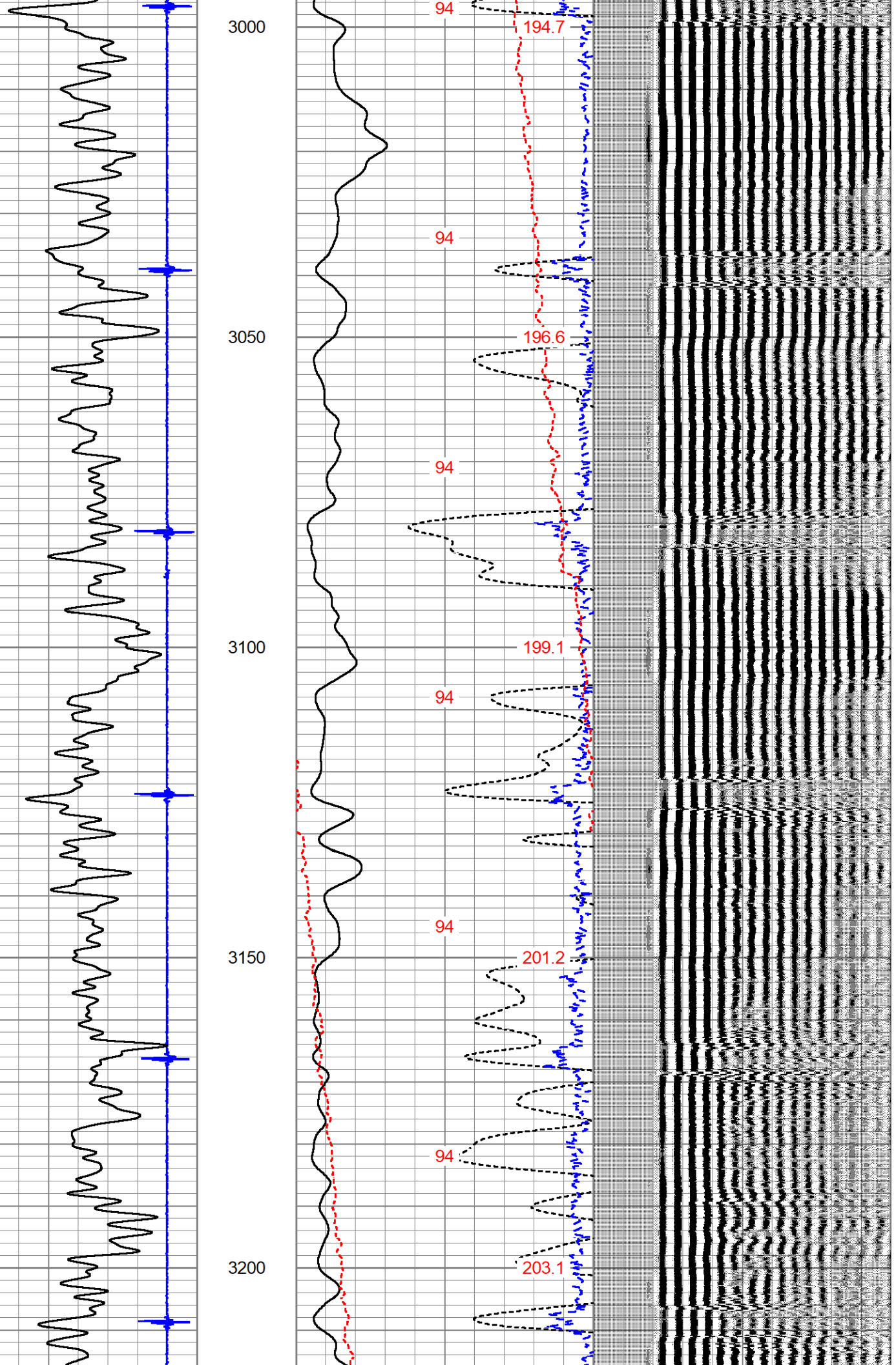
191.1

94

192.8

94







3250

3300

3350

3400

94

204.7

94

94

206.3

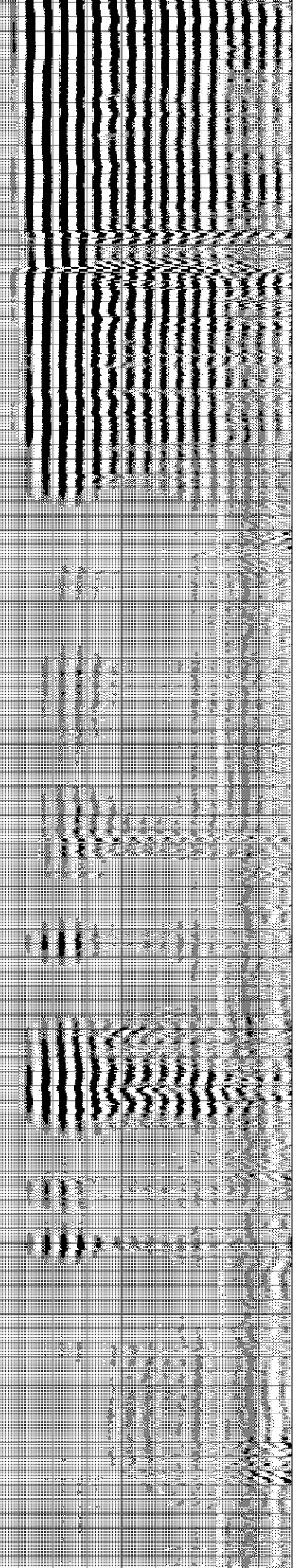
94

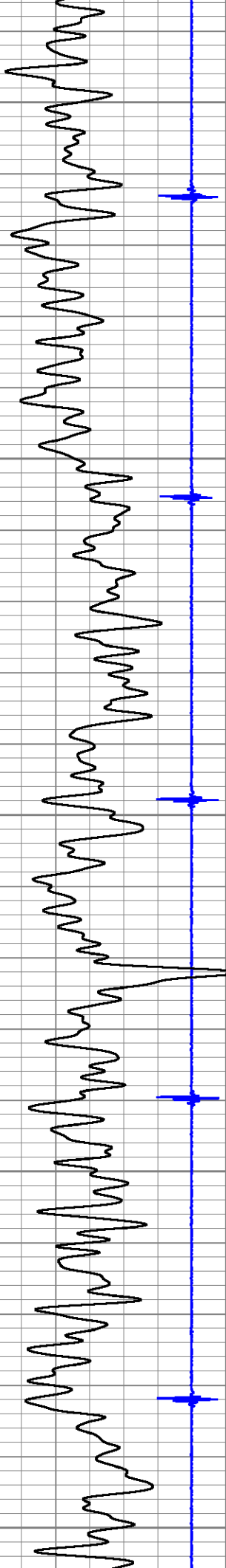
208.5

94

210.3

94





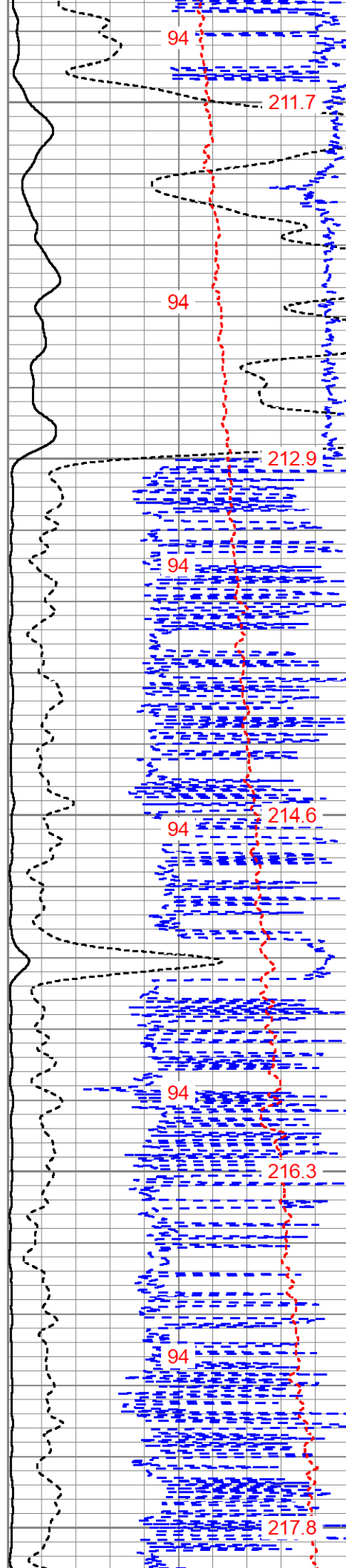
3450

3500

3550

3600

3650



94

211.7

94

212.9

94

94

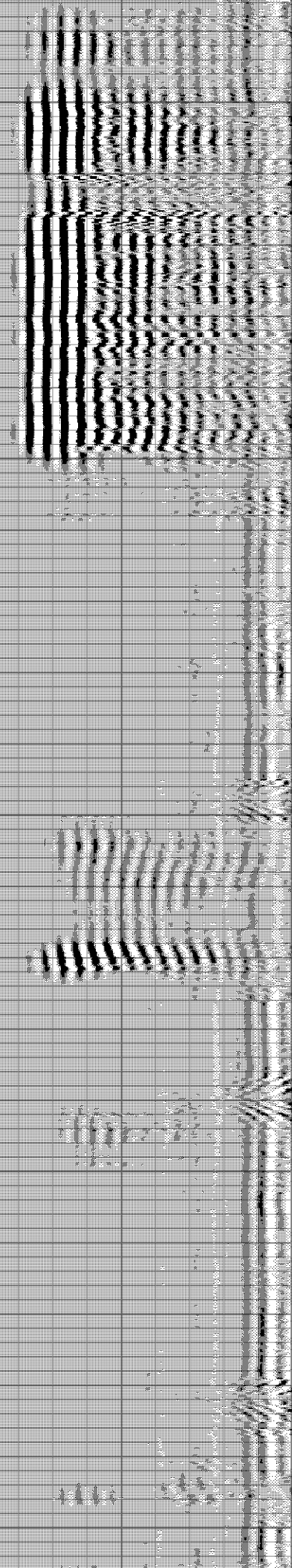
214.6

94

216.3

94

217.8





3700

94

94

219.6

3750

94

221.3

94

3800

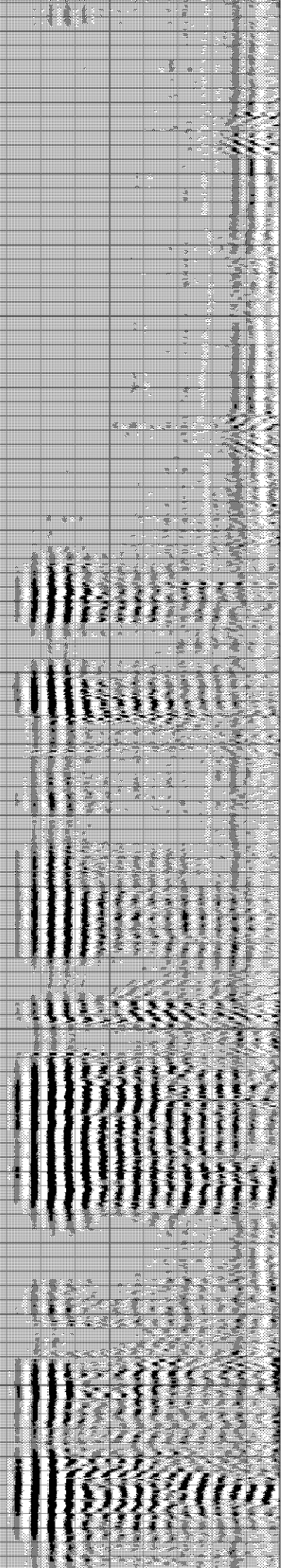
222.6

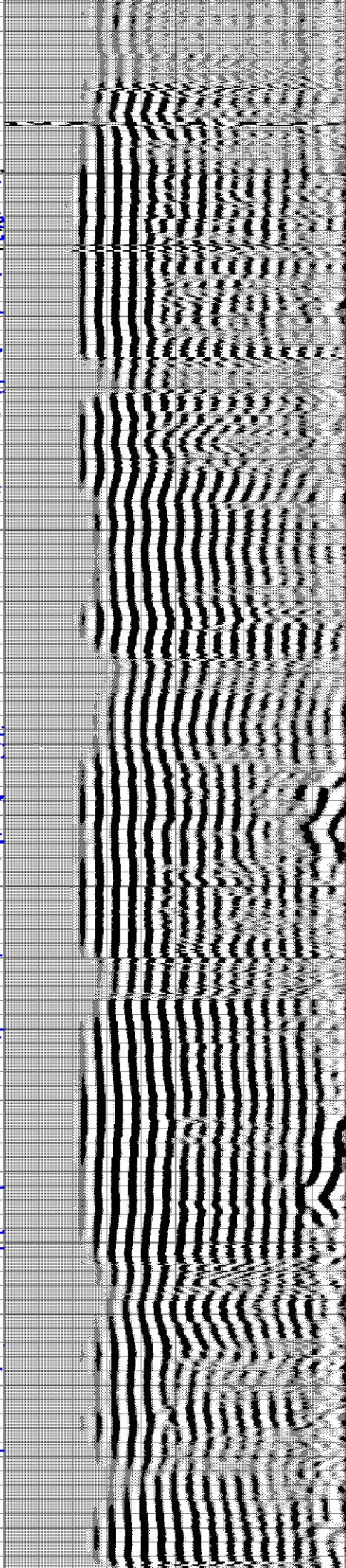
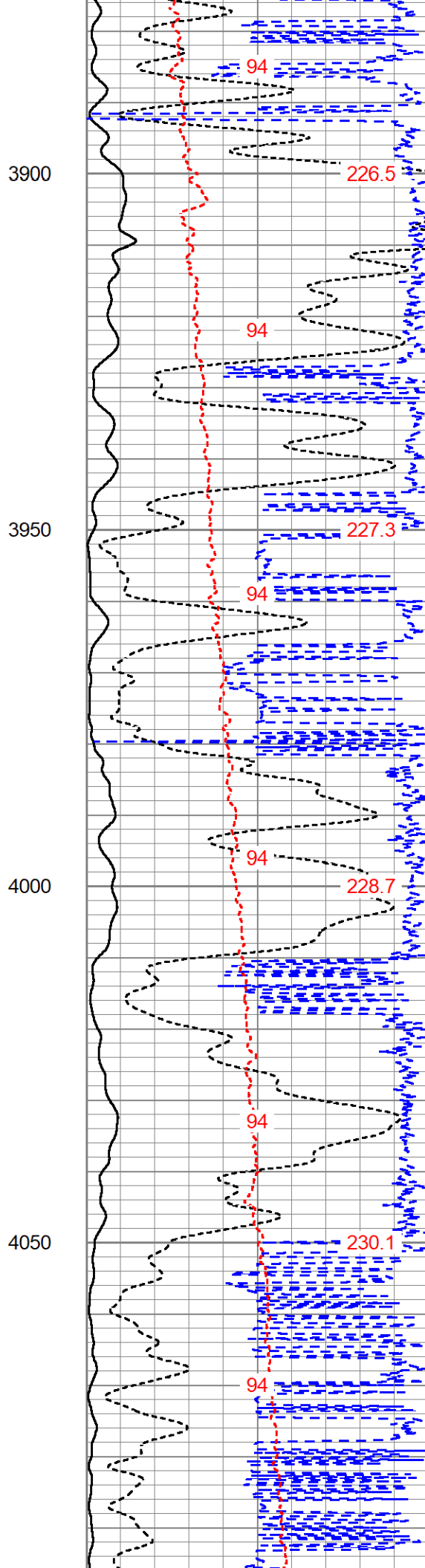
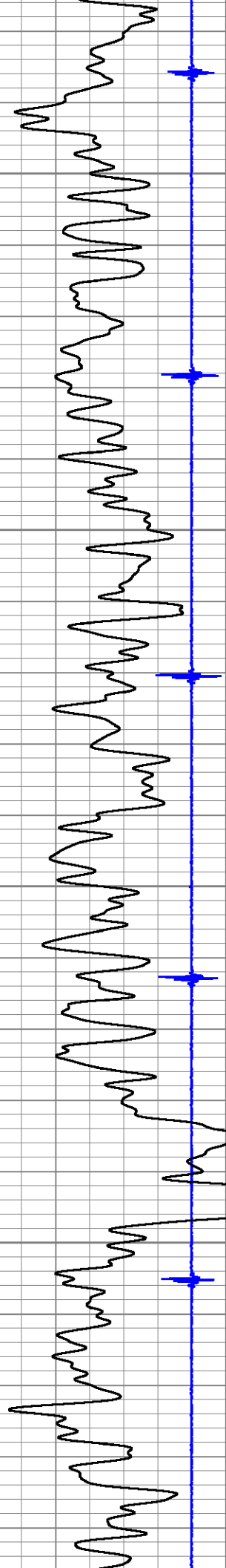
94

3850

94

224.4







4100

231.4

94

4150

233.2

94

4200

234.5

94

4250

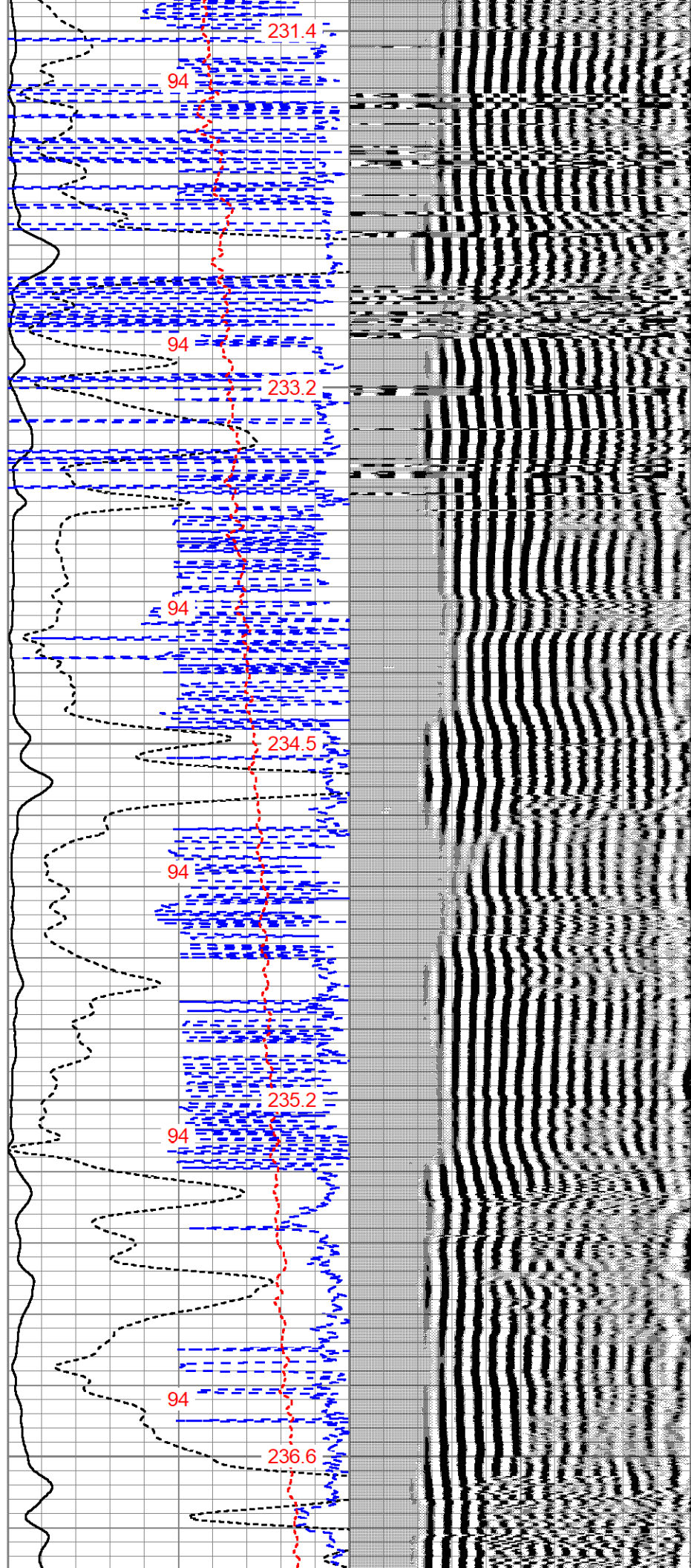
235.2

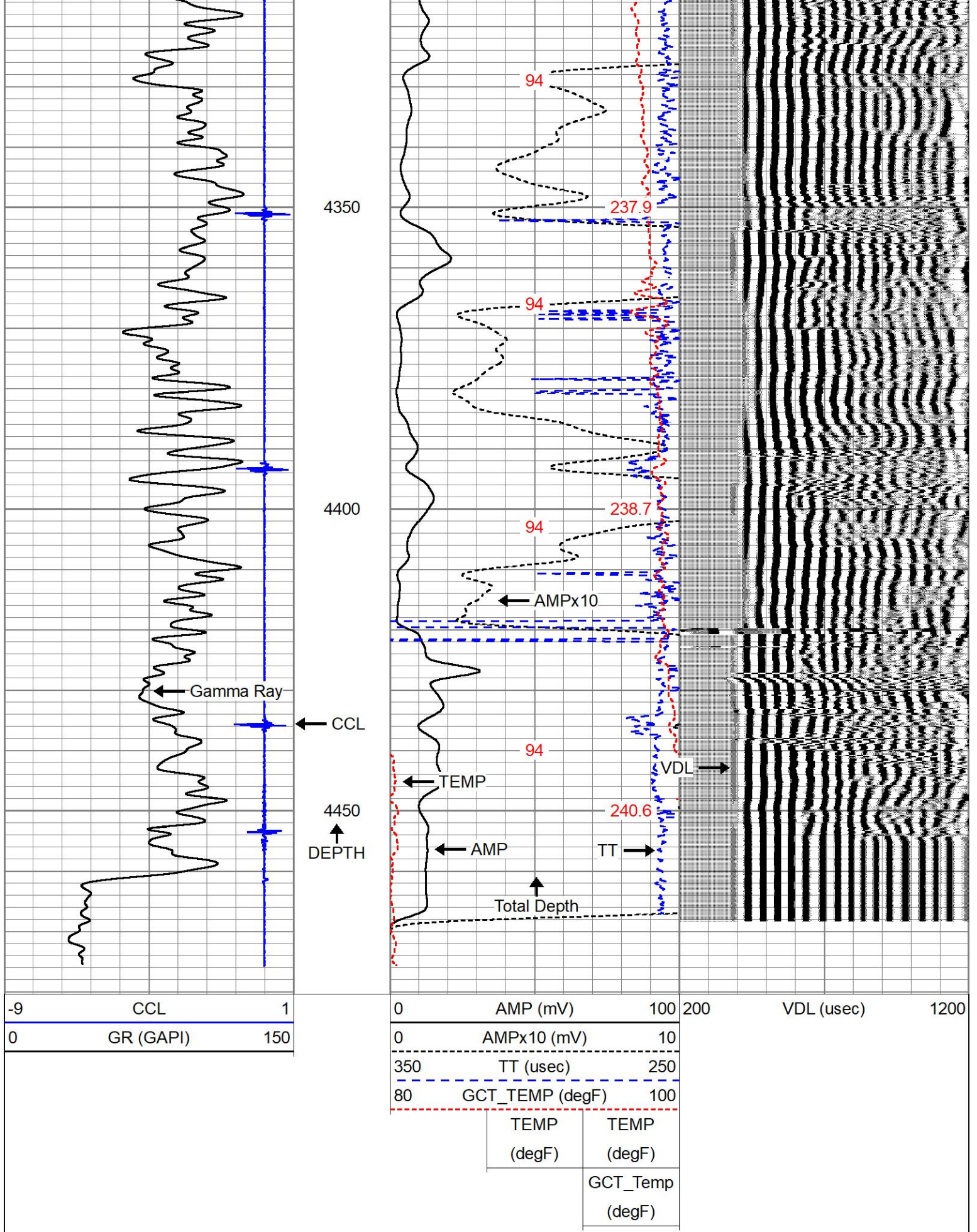
94

4300

236.6

94

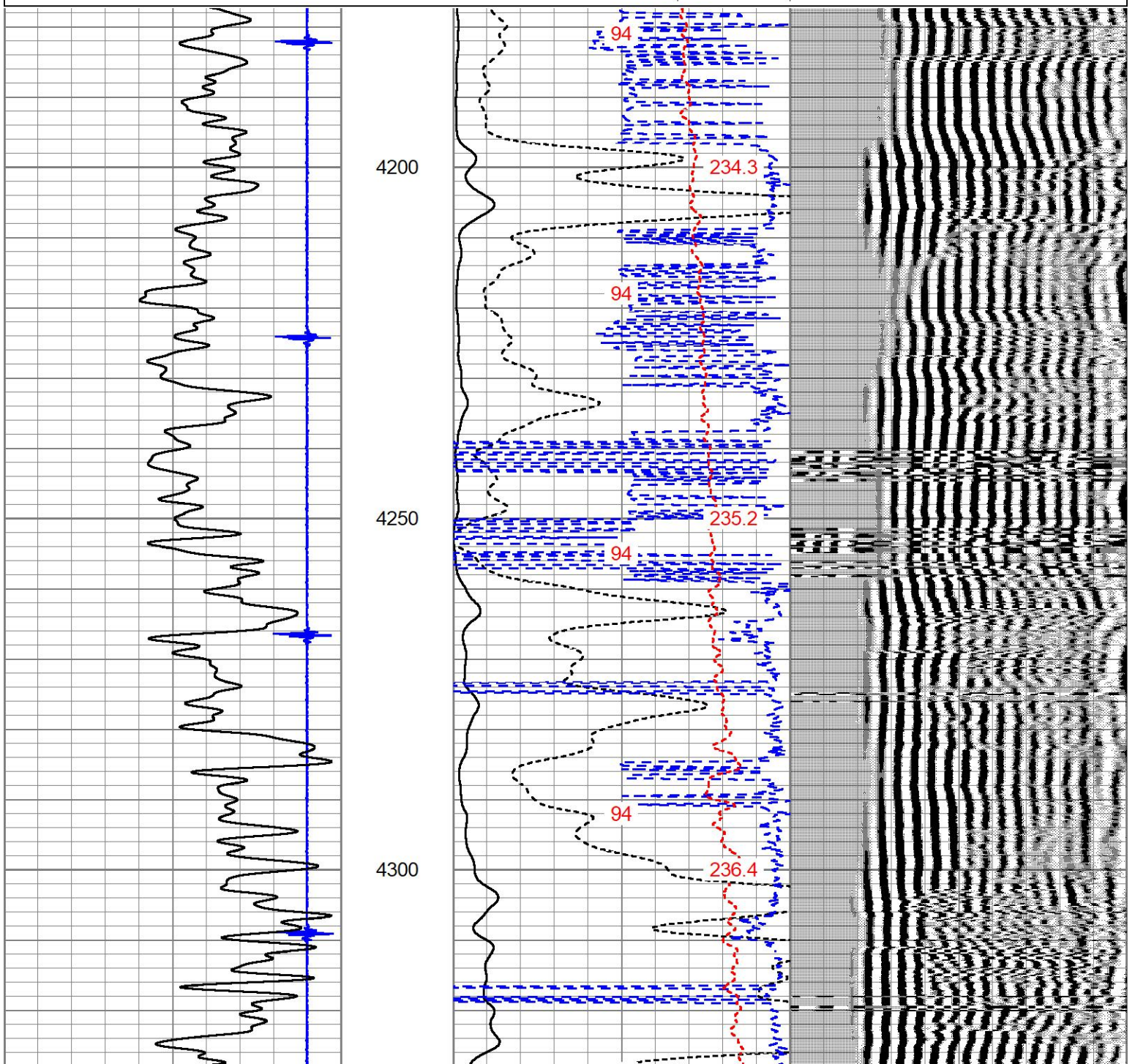


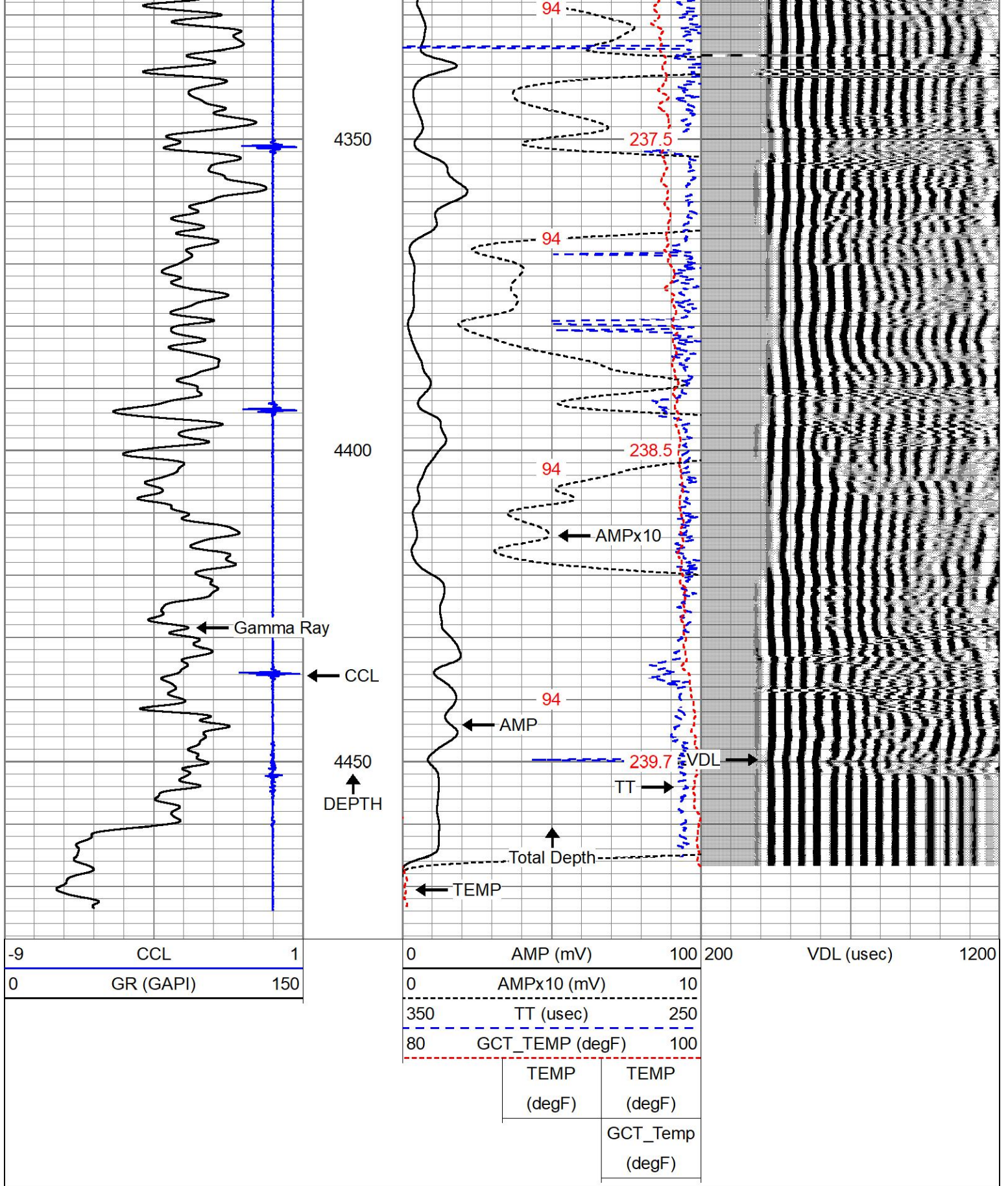



Database File irvin 1-19.db
 Dataset Pathname pass2
 Presentation Format cblexreme2
 Dataset Creation Mon Dec 12 09:02:07 2022
 Charted by Depth in Feet scaled 1:240

-9	CCL	1
0	GR (GAPI)	150

0	AMP (mV)	100	200	VDL (usec)	1200
0	AMPx10 (mV)	10			
350	TT (usec)	250			
80	GCT_TEMP (degF)	100			
	TEMP (degF)	TEMP (degF)			
		GCT_Temp (degF)			





Sensor	Offset (ft)	Schematic	Description	Length (ft)	O.D. (in)	Weight (lb)
ErrCt	20.58		CENT-BC275-0000 Probe 2.75" Bowspring Centralizer	2.83	2.75	24.00

RadiiHeadVolt	17.75				
TEMP	14.95				
WVFS8	12.80		RBT-Probe275T (2.75T_base) 2.75" Radial with Integral Temperature Sub	9.20	2.75
WVFS7	12.80				
WVFS6	12.80				
WVFS5	12.80				
WVFS4	12.80				
WVFS3	12.80				
WVFS2	12.80				
WVFS1	12.80				
WVFCAL	12.80				
WVF3FT	12.80				
WVF5FT	11.80				
			CENT-BC275-0000 Probe 2.75" Bowspring Centralizer	2.83	2.75
CCL\$2	4.47				
CCL\$1	4.47				
GCT_Temp	3.59				
GR	2.72		GC-GCT275-0BP0 (GCT275-0BP0_base) Probe 2.75" Gamma Ray - CCL (6 magnet) w/Temp	5.38	2.75
			Plug-FA108-0000 1.38" Bull Plug	0.33	1.38

Dataset: irvin 1-19.db: field/well/run1/pass3
 Total length: 20.58 ft
 Total weight: 108.00 lb
 O.D.: 2.75 in