

Quarterly Report to the Commission Idaho Code § 47-315(9) Idaho Code § 47-324(6)

4th Quarter 2021 (October - December)



SUBMITTED TO THE COMMISSION AS
A SUPPLEMENT TO THE SECRETARY'S REPORT
MARCH 5, 2022
JAMES THUM
IDAHO DEPARTMENT OF LANDS

**TITLE 47
MINES AND MINING
CHAPTER 3
OIL AND GAS WELLS — GEOLOGIC INFORMATION, AND
PREVENTION OF WASTE**

§ 47-324(6) The department shall report quarterly to the commission on the produced volumes of oil and gas, sales volumes of oil and gas, and the meeting of industry standards.

Volumes Produced & Sold – 4th Quarter 2021

Comparison to Previous Quarter / Previous Year

<u>Volumes Produced</u>	<u>Cum. Gas (MCF)</u>	<u>Condensate (BBL)</u>	<u>NGLs (Gallons)*</u>	<u>Cum. Oil (BBL)</u>	<u>H2O (BBL)</u>
4th Quarter 2021	309,765	6,959	278,698	0	2,309
3rd Quarter 2021	324,380	10,104	334,143	0	693
Increase / Decrease	-14,615	-3,145	-55,445	0	1,616
% Difference	-4.5	-31.1	-16.6	NA	233.2
vs 4th Qtr 2020**	617.4	1,101	847.8	NA	2251.3
<u>Volumes Sold***</u>	<u>Gas (MMBtu)</u>	<u>Condensate (BBL)</u>	<u>NGLs (Gallons)</u>	<u>Oil (BBL)</u>	
4th Quarter 2021	332,760	6,959	345,424	0	
3rd Quarter 2021	272,213	8,829	278,698	0	
Increase / Decrease	60,547	-1,870	66,726	0	
% Difference	22.2	-21.2	23.9	0	
vs 4th Qtr 2020**	634.1	NA	NA	NA	

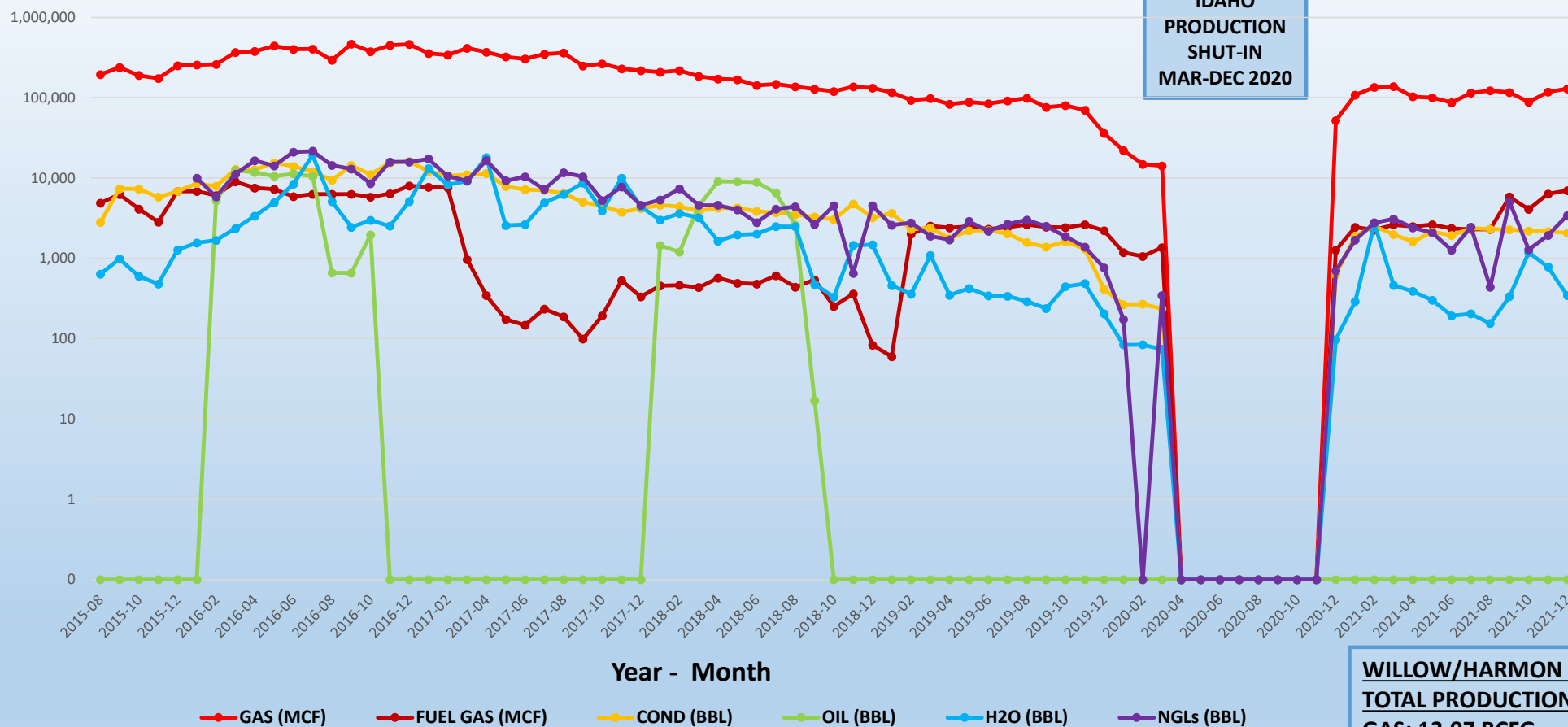
*Denotes Plant Production from Highway 30 Facility

**4th Quarter Volumes only occurred in December 2020 when production was re-started

***Sold Volumes Reports are current for December 2020 through December 2021. December 2020 Liquids sold in 2021.

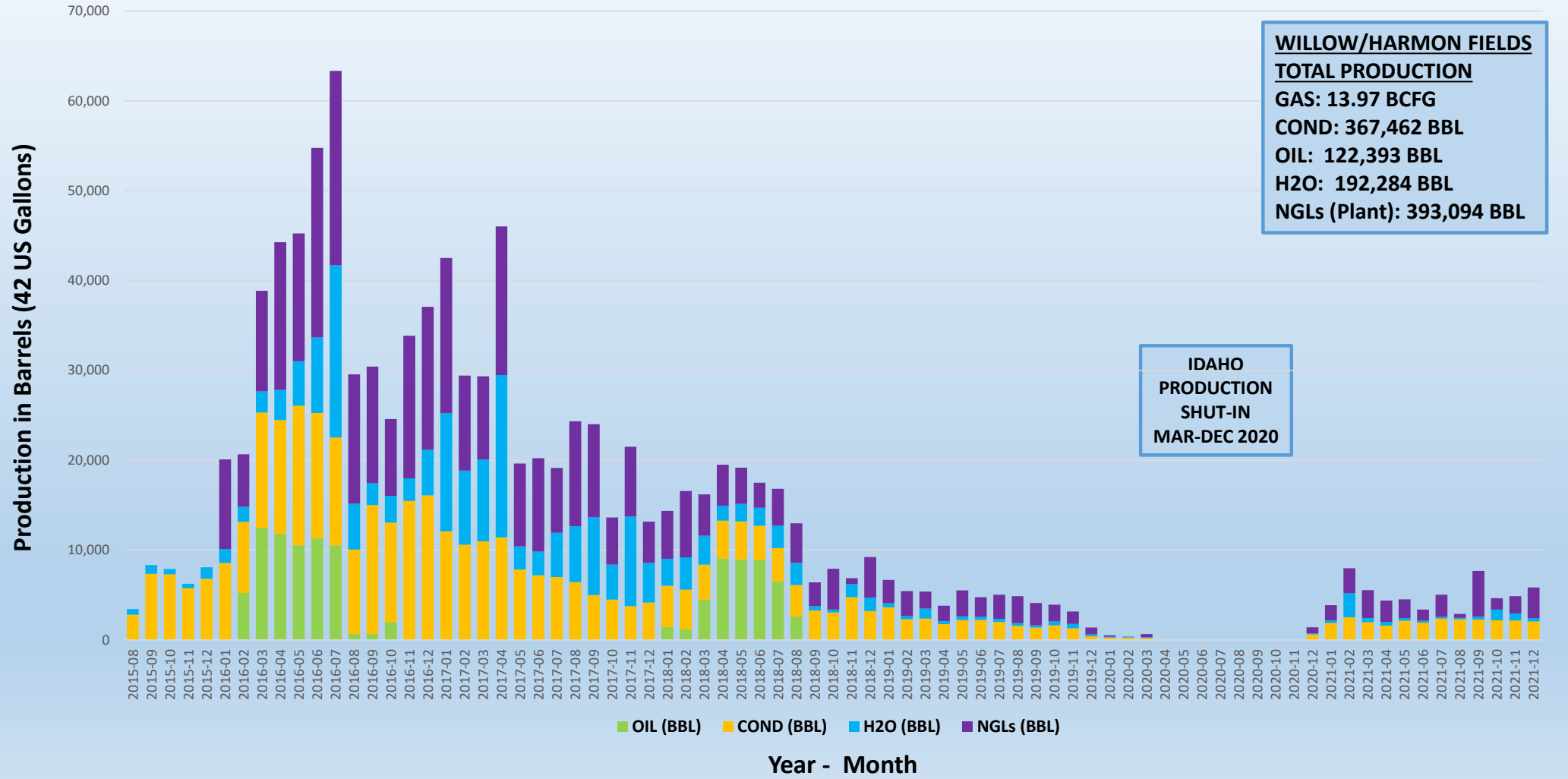
Western Idaho Production - August 2015 to Present

IDAHO
PRODUCTION
SHUT-IN
MAR-DEC 2020



WILLOW/HARMON FIELDS
TOTAL PRODUCTION
GAS: 13.97 BCFG
COND: 367,462 BBL
OIL: 122,393 BBL
H2O: 192,284 BBL
NGLs (Plant): 393,094 BBL

Western Idaho Production Liquids Output - August 2015 to Present



SW IDAHO – 2020 PRODUCTION DAYS

2020 Production Days

29	30	31	1-Jan	2	3	4
5	6	7	8	9	10	11
12	13	14	15	16	17	18
19	20	21	22	23	24	25
26	27	28	29	30	31	1-Feb
2	3	4	5	6	7	8
9	10	11	12	13	14	15
16	17	18	19	20	21	22
23	24	25	26	27	28	29
1-Mar	2	3	4	5	6	7
8	9	10	11	12	13	14
15	16	17	18	19	20	21
22	23	24	25	26	27	28
29	30	31*	1-Apr	2	3	4
5	6	7	8	9	10	11
12	13	14	15	16	17	18
19	20	21	22	23	24	25
26	27	28	29	30	1-May	2
3	4	5	6	7	8	9
10	11	12	13	14	15	16
17	18	19	20	21	22	23
24	25	26	27	28	29	30
31	1-Jun	2	3	4	5	6
7	8	9	10	11	12	13
14	15	16	17	18	19	20
21	22	23	24	25	26	27
28	29	30	1-Jul	2	3	4

Q1:
55 Days
36 Days

Q2:
0 Days
91 Days

28	29	30	1-Jul	2	3	4
5	6	7	8	9	10	11
12	13	14	15	16	17	18
19	20	21	22	23	24	25
26	27	28	29	30	31	1-Aug
2	3	4	5	6	7	8
9	10	11	12	13	14	15
16	17	18	19	20	21	22
23	24	25	26	27	28	29
30	31	1-Sep	2	3	4	5
6	7	8	9	10	11	12
13	14	15	16	17	18	19
20	21	22	23	24	25	26
27	28	29	30	1-Oct	2	3
4	5	6	7	8	9	10
11	12	13	14	15	16	17
18	19	20	21	22	23	24
25	26	27	28	29	30	31
1-Nov	2	3	4	5	6	7
8	9	10	11	12	13	14
15	16	17	18	19	20	21
22	23	24	25	26	27	28
29	30	1-Dec	2	3	4	5
6	7	8	9	10	11	12
13	14	15	16	17	18	19
20	21	22	23	24	25	26
27	28	29	30	31	1-Jan	2

Q3:
0 Days
92 Days

Q4:
17 Days
75 Days

Total: Producing 72 Days
Shut-In 294 Days

*March 31, 2020 - M6.5 Earthquake Near Stanley, ID

SW IDAHO – 2021 PRODUCTION DAYS

2021 Production Days

28	29	30	31	1-Jan	2	3
4	5	6	7	8	9	10
11	12	13	14	15	16	17
18	19	20	21	22	23	24
25	26	27	28	29	30	31
1-Feb	2	3	4	5	6	7
8	9	10	11	12	13	14
15	16	17	18	19	20	21
22	23	24	25	26	27	28
1-Mar	2	3	4	5	6	7
8	9	10	11	12	13	14
15	16	17	18	19	20	21
22	23	24	25	26	27	28
29	30	31	1-Apr	2	3	4
5	6	7	8	9	10	11
12	13	14	15	16	17	18
19	20	21	22	23	24	25
26	27	28	29	30	1-May	2
3	4	5	6	7	8	9
10	11	12	13	14	15	16
17	18	19	20	21	22	23
24	25	26	27	28	29	30
31	1-Jun	2	3	4	5	6
7	8	9	10	11	12	13
14	15	16	17	18	19	20
21	22	23	24	25	26	27
28	29	30	1-Jul	2	3	4

Q1:
90 Days
00 Days

Q2:
91 Days
0 Days

28	29	30	1-Jul	2	3	4
5	6	7	8	9	10	11
12	13	14	15	16	17	18
19	20	21	22	23	24	25
26	27	28	29	30	31	1-Aug
2	3	4	5	6	7	8
9	10	11	12	13	14	15
16	17	18	19	20	21	22
23	24	25	26	27	28	29
30	31	1-Sep	2	3	4	5
6	7	8	9	10	11	12
13	14	15	16	17	18	19
20	21	22	23	24	25	26
27	28	29	30	1-Oct	2	3
4	5	6	7	8	9	10
11	12	13	14	15	16	17
18	19	20	21	22	23	24
25	26	27	28	29	30	31
1-Nov	2	3	4	5	6	7
8	9	10	11	12	13	14
15	16	17	18	19	20	21
22	23	24	25	26	27	28
29	30	1-Dec	2	3	4	5
6	7	8	9	10	11	12
13	14	15	16	17	18	19
20	21	22	23	24	25	26
27	28	29	30	31	1-Jan	2

Q3:
92 Days
00 Days

Q4:
92 Days
00 Days

Total: Producing 365 Days
Shut-In 0 Days

Plant – Transportation – Sold Volumes

1-Year Running Totals – January 2021 through December 2021*

<u>Residue Gas (MCF)</u>			<u>Gas Sold (MMBtu)</u>	<u>Produced vs Sold (Variance)</u>	
1,228,943			1,246,977	-1.5%	
<u>Plant Condensate (BBL)</u>	<u>Condensate Transported**</u>	<u>Produced vs Transported (Variance)</u>	<u>Condensate Sold (BBL)</u>	<u>Produced vs Sold (Variance)</u>	<u>Transported vs Sold (Variance)</u>
32,045	32,472	-1.3%	32,473	-1.3%	0%
<u>Plant NGLs (Gallons)</u>	<u>NGLs Transported</u>	<u>Produced vs Transported (Variance)</u>	<u>NGLs Sold (Gallons)</u>	<u>Produced vs Sold (Variance)</u>	<u>Transported vs Sold (Variance)</u>
1,172,103	1,203,358	-2.7%	1,144,168	2.4%	-4.9%
<u>Oil Produced (BBL)</u>	<u>Oil Transported</u>	<u>Produced vs Transported (Variance)</u>	<u>Oil Sold (BBL)</u>	<u>Produced vs Sold (Variance)</u>	<u>Transported vs Sold (Variance)</u>
0	0	---	0	---	---

Numbers in **RED** indicate variance in excess of 5%

*Liquids Transportation and Sales Volumes may be delayed 60 to 90 days after production is reported.

**Condensate Transporter is also Purchaser (Pinnacle) since December 2020 field re-start.

Well & Permit Activity

4th Quarter 2021

<u>Wells</u>	<u>Active Permits*</u>	<u>Drilling wells</u>	<u>Producing wells</u>	<u>Comments</u>	
October	14	2	6	Barlow 2-14 Drilling Completed Spud Fallon 1-11	
November	15	1	6	Fallon 1-11 Drilling Completed	
December	15	2	5	Spud Dutch Lane #1-13	
<u>Other</u>	<u>Sundry Notices</u>	<u>Workover / P&A</u>	<u>APDs Received</u>	<u>APDs Approved</u>	<u>APDs Denied</u>
October	6	0	0	1**	0
November	4	0	1	1	0
December	2	0	0	0	0

*5 Producing Wells, 8 Shut-in Wells, 1 Drilling Well, 1 Pending P&A as of December 31, 2021

**APD for the Fallon 1-11 received Sept. 2022, approved in 14 days.

Dutch Lane 1-13 APD approved in 19 days with revisions by Operator.

NOTE: Information on the Barlow 2-14, Fallon 1-11 and Dutch Lane 1-13 wells is confidential per Idaho Code § 47-327 until 2nd Quarter 2022.

**TITLE 47
MINES AND MINING
CHAPTER 3
OIL AND GAS WELLS — GEOLOGIC INFORMATION, AND PREVENTION OF
WASTE**

§ 47-315(9) The commission shall require the department to perform the following activities on an annual basis:

- (a) Inspect and report on all active well sites and equipment;**
- (b) Visit and file a report on production and processing facilities; and**
- (c) Submit an opinion as to any areas of concern, as identified on inspection reports.**

Inspection Activity – 4th Quarter 2021

- **Well Inspections**
 - 9 Annual Well Inspections
 - 3 Drilling / Surface Casing Inspections
- **Gas Facility Inspections**
 - 2 Annual Inspections
- **3 Outstanding Issues:**
 - Tracy Trust #3-2 pending P&A from 2019; full plugging to be completed by April 2022
 - DJS 1-15 excessive pad erosion
 - Kauffman 1-9 shut-in issue with paraffin treatment tubing
- **Department working with operator for resolution on all issues**
- **2021 Total Inspections:**
 - 15 Well Inspections
 - 3 Facilities Inspections



ANNUAL WELL SITE INSPECTION
ML INVESTMENTS #3-10
WILLOW FIELD, PAYETTE CO, ID
PHOTO COURTESY J. THUM

**Please Direct All Questions & Suggestions
to the IDL Division of Minerals, Navigable Waters, Oil & Gas**

<https://ogcc.idaho.gov/contact-us/>



**NGL LOADING FACILITY, HIGHWAY 30
ANNUAL PLANT INSPECTION
PAYETTE CO. ID
NOVEMBER 2021
PHOTO COURTESY J. THUM**

2022 1st Quarter Report will be provided during 2nd Quarter 2022