

**Quarterly Report to the Commission  
Idaho Code § 47-315(9)  
Idaho Code § 47-324(6)**

**3rd Quarter 2021 (July - September)**



SUBMITTED TO THE COMMISSION AS  
A SUPPLEMENT TO THE SECRETARY'S REPORT  
DECEMBER 2, 2021  
JAMES THUM  
IDAHO DEPARTMENT OF LANDS

**TITLE 47  
MINES AND MINING  
CHAPTER 3  
OIL AND GAS WELLS — GEOLOGIC INFORMATION, AND  
PREVENTION OF WASTE**

**§ 47-324(6) The department shall report quarterly to the commission on the produced volumes of oil and gas, sales volumes of oil and gas, and the meeting of industry standards.**

# Volumes Produced & Sold – 3rd Quarter 2021

## Comparison to Previous Quarter / Previous Year

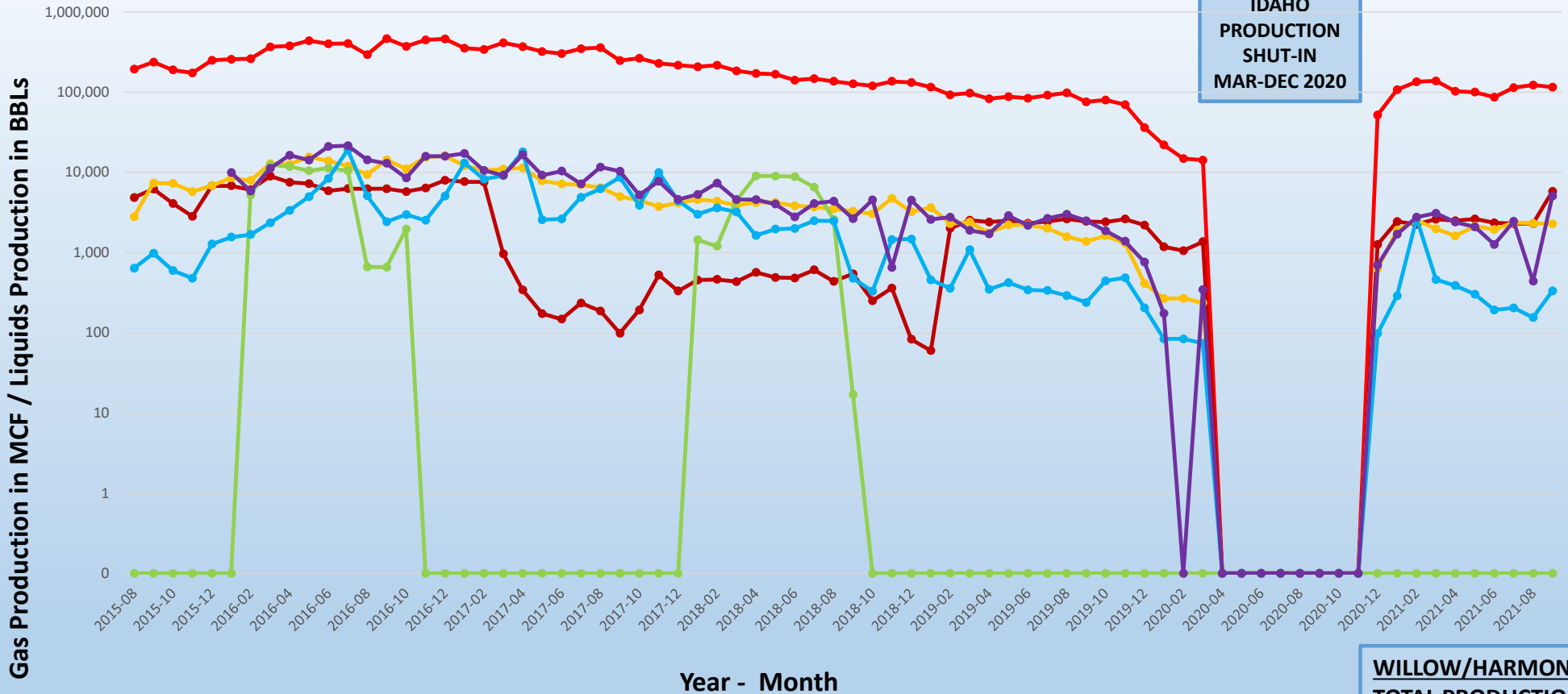
<u>Volumes Produced</u>	<u>Cum. Gas (MCF)</u>	<u>Condensate (BBL)</u>	<u>NGLs (Gallons)*</u>	<u>Cum. Oil (BBL)</u>	<u>H2O (BBL)</u>
3rd Quarter 2021	324,380	10,104	334,143	0	693
2nd Quarter 2021	270,171	8,139	241,581	0	883
Increase / <b>Decrease</b>	54,209	1,965	92,562	0	<b>-190</b>
% Difference	20.1	24.1	38.3	NA	<b>-21.5</b>
vs 3rd Qtr 2020**	100	100	100	NA	100
<u>Volumes Sold***</u>	<u>Gas (MMBtu)</u>	<u>Condensate (BBL)</u>	<u>NGLs (Gallons)</u>	<u>Oil (BBL)</u>	
3rd Quarter 2021	332,760	8,829	345,424	0	
2nd Quarter 2021	272,213	9,140	244,341	0	
Increase / <b>Decrease</b>	60,547	<b>-311</b>	101,083	0	
% Difference	22.2	<b>-3.4</b>	41.4	0	
vs 3rd Qtr 2020**	100	100	100	NA	

\*Denotes Plant Production from Highway 30 Facility

\*\*All Idaho Production Shut-In March 21, 2020 to December 15, 2020. No Sales Volumes reported for 1<sup>st</sup> Quarter 2020

\*\*\*Sold Volumes Reports are current for December 2020 through September 2021. December 2020 Liquids sold in 2021.

### Western Idaho Production - August 2015 to Present



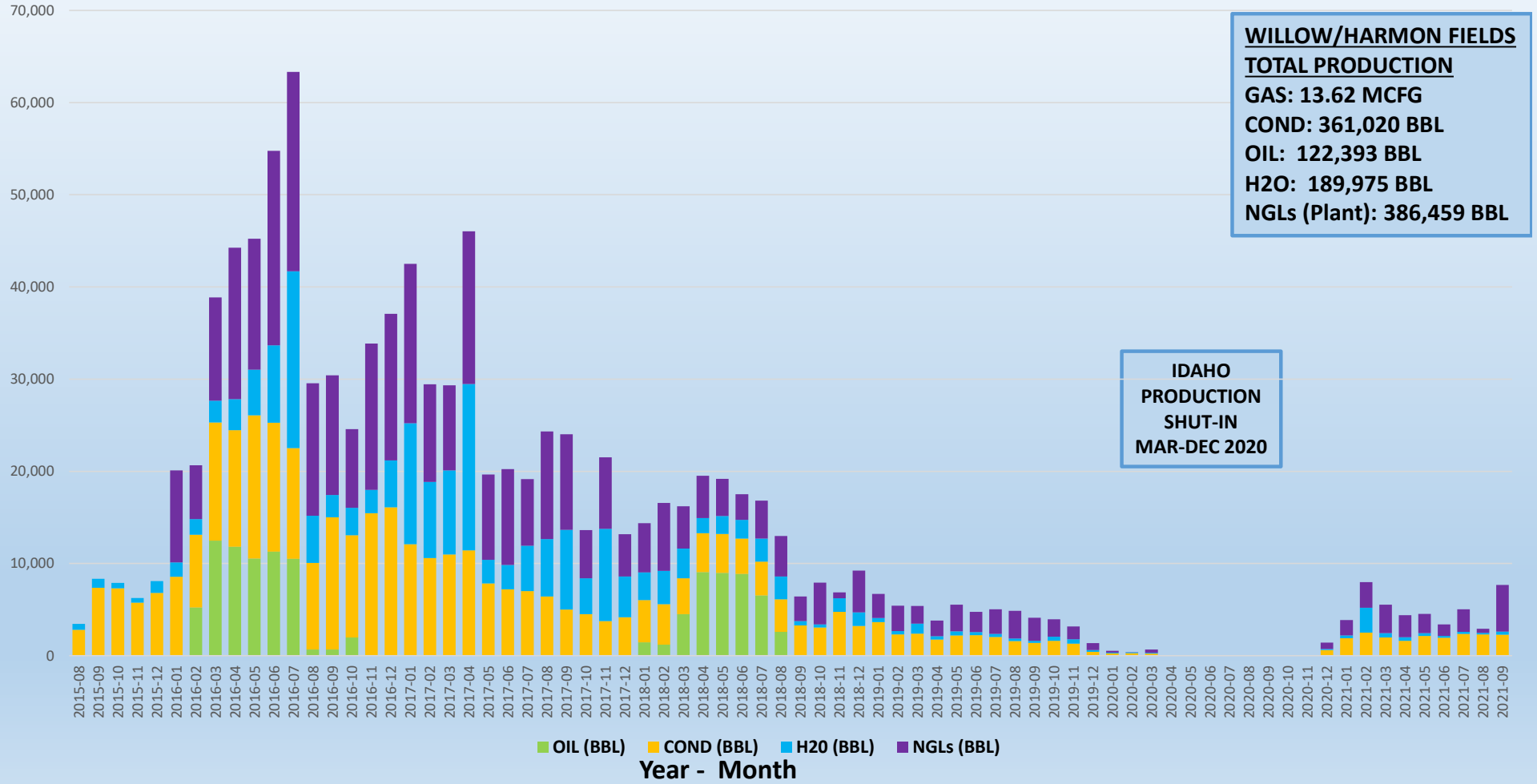
**IDAHO  
PRODUCTION  
SHUT-IN  
MAR-DEC 2020**

**WILLOW/HARMON FIELDS**  
**TOTAL PRODUCTION**  
**GAS: 13.62 MCFCG**  
**COND: 361,020 BBL**  
**OIL: 122,393 BBL**  
**H2O: 189,975 BBL**  
**NGLs (Plant): 386,459 BBL**

- GAS (MCF)
- FUEL GAS (MCF)
- COND (BBL)
- OIL (BBL)
- H2O (BBL)
- NGLs (BBL)

**Western Idaho Production Liquids Output - August 2015 to Present**

Production in Barrels (42 US Gallons)



## SW IDAHO – 2020 PRODUCTION DAYS

**2020 Production Days**

29	30	31	1-Jan	2	3	4
5	6	7	8	9	10	11
12	13	14	15	16	17	18
19	20	21	22	23	24	25
26	27	28	29	30	31	1-Feb
2	3	4	5	6	7	8
9	10	11	12	13	14	15
16	17	18	19	20	21	22
23	24	25	26	27	28	29
1-Mar	2	3	4	5	6	7
8	9	10	11	12	13	14
15	16	17	18	19	20	21
22	23	24	25	26	27	28
29	30	31*	1-Apr	2	3	4
5	6	7	8	9	10	11
12	13	14	15	16	17	18
19	20	21	22	23	24	25
26	27	28	29	30	1-May	2
3	4	5	6	7	8	9
10	11	12	13	14	15	16
17	18	19	20	21	22	23
24	25	26	27	28	29	30
31	1-Jun	2	3	4	5	6
7	8	9	10	11	12	13
14	15	16	17	18	19	20
21	22	23	24	25	26	27
28	29	30	1-Jul	2	3	4

**Q1:**  
55 Days  
36 Days

**Q2:**  
0 Days  
91 Days

28	29	30	1-Jul	2	3	4
5	6	7	8	9	10	11
12	13	14	15	16	17	18
19	20	21	22	23	24	25
26	27	28	29	30	31	1-Aug
2	3	4	5	6	7	8
9	10	11	12	13	14	15
16	17	18	19	20	21	22
23	24	25	26	27	28	29
30	31	1-Sep	2	3	4	5
6	7	8	9	10	11	12
13	14	15	16	17	18	19
20	21	22	23	24	25	26
27	28	29	30	1-Oct	2	3
4	5	6	7	8	9	10
11	12	13	14	15	16	17
18	19	20	21	22	23	24
25	26	27	28	29	30	31
1-Nov	2	3	4	5	6	7
8	9	10	11	12	13	14
15	16	17	18	19	20	21
22	23	24	25	26	27	28
29	30	1-Dec	2	3	4	5
6	7	8	9	10	11	12
13	14	15	16	17	18	19
20	21	22	23	24	25	26
27	28	29	30	31	1-Jan	2

**Q3:**  
0 Days  
92 Days

**Q4:**  
17 Days  
75 Days

**Total:** Producing 72 Days  
Shut-In 294 Days

\*March 31, 2020 - M6.5 Earthquake Near Stanley, ID

# SW IDAHO – 2021 PRODUCTION DAYS

2021 Production Days								2021 Production Days											
28	29	30	31	1-Jan	2	3		28	29	30	1-Jul	2	3	4					
4	5	6	7	8	9	10		5	6	7	8	9	10	11					
11	12	13	14	15	16	17		12	13	14	15	16	17	18					
18	19	20	21	22	23	24		19	20	21	22	23	24	25					
25	26	27	28	29	30	31		26	27	28	29	30	31	1-Aug					
1-Feb	2	3	4	5	6	7		2	3	4	5	6	7	8					
8	9	10	11	12	13	14		9	10	11	12	13	14	15					
15	16	17	18	19	20	21		16	17	18	19	20	21	22					
22	23	24	25	26	27	28		23	24	25	26	27	28	29					
1-Mar	2	3	4	5	6	7		30	31	1-Sep	2	3	4	5					
8	9	10	11	12	13	14		6	7	8	9	10	11	12					
15	16	17	18	19	20	21		13	14	15	16	17	18	19					
22	23	24	25	26	27	28		20	21	22	23	24	25	26					
29	30	31	1-Apr	2	3	4		27	28	29	30	1-Oct	2	3					
5	6	7	8	9	10	11		4	5	6	7	8	9	10					
12	13	14	15	16	17	18		11	12	13	14	15	16	17					
19	20	21	22	23	24	25		18	19	20	21	22	23	24					
26	27	28	29	30	1-May	2		25	26	27	28	29	30	31					
3	4	5	6	7	8	9		1-Nov	2	3	4	5	6	7					
10	11	12	13	14	15	16		8	9	10	11	12	13	14					
17	18	19	20	21	22	23		15	16	17	18	19	20	21					
24	25	26	27	28	29	30		22	23	24	25	26	27	28					
31	1-Jun	2	3	4	5	6		29	30	1-Dec	2	3	4	5					
7	8	9	10	11	12	13		6	7	8	9	10	11	12					
14	15	16	17	18	19	20		13	14	15	16	17	18	19					
21	22	23	24	25	26	27		20	21	22	23	24	25	26					
28	29	30	1-Jul	2	3	4		27	28	29	30	31	1-Jan	2					
																	<b>Total:</b>	<b>Producing</b>	<b>236 Days</b>
																		<b>Shut-In</b>	<b>0 Days</b>

# Plant – Transportation – Sold Volumes

1-Year Running Totals – September 2020 through September 2021\*

<u>Residue Gas (MCF)</u>			<u>Gas Sold (MMBtu)</u>	<u>Produced vs Sold (Variance)</u>	
962,354			982,541	-2.1%	
<u>Plant Condensate (BBL)</u>	<u>Condensate Transported**</u>	<u>Produced vs Transported (Variance)</u>	<u>Condensate Sold (BBL)</u>	<u>Produced vs Sold (Variance)</u>	<u>Transported vs Sold (Variance)</u>
25,665	25,512	0.6%	25,514	0.6%	0%
<u>Plant NGLs (Gallons)</u>	<u>NGLs Transported</u>	<u>Produced vs Transported (Variance)</u>	<u>NGLs Sold (Gallons)</u>	<u>Produced vs Sold (Variance)</u>	<u>Transported vs Sold (Variance)</u>
922,810	922,482	0.0%	865,470	6.2%	6.2%
<u>Oil Produced (BBL)</u>	<u>Oil Transported</u>	<u>Produced vs Transported (Variance)</u>	<u>Oil Sold (BBL)</u>	<u>Produced vs Sold (Variance)</u>	<u>Transported vs Sold (Variance)</u>
0	0	---	0	---	---

Numbers in **RED** indicate variance in excess of 5%

\*Liquids Transportation and Sales Volumes may be delayed 60 to 90 days after production is reported.

\*\*Condensate Transporter is also Purchaser (Pinnacle) since December 2020 field re-start.



# Well & Permit Activity 3rd Quarter 2021

<u>Wells</u>	<u>Active Permits*</u>	<u>Drilling wells</u>	<u>Producing wells</u>	<u>Comments</u>	
July	13	0	6	5 Wells in Willow Field Producing 1 Well in Harmon Field Producing	
August	13	0	6		
September	13	1	6	Barlow 2-14 Spudded	
<u>Other</u>	<u>Sundry Notices</u>	<u>Workover / P&amp;A</u>	<u>APDs Received</u>	<u>APDs Approved</u>	<u>APDs Denied</u>
July	1	1	0	0	0
August	0	0	0	0	0
September	2	0	1	0	0

\*6 Producing Wells, 6 Shut-in Wells, 1 Pending P&A

**TITLE 47  
MINES AND MINING  
CHAPTER 3  
OIL AND GAS WELLS — GEOLOGIC INFORMATION, AND PREVENTION OF  
WASTE**

**§ 47-315(9) The commission shall require the department to perform the following activities on an annual basis:**

- (a) Inspect and report on all active well sites and equipment;**
- (b) Visit and file a report on production and processing facilities; and**
- (c) Submit an opinion as to any areas of concern, as identified on inspection reports.**

# Inspection Activity – 3rd Quarter 2021

- **Well Inspections**
  - 2 during 3rd Quarter
- **Gas Facility Inspections**
  - 1 during 3rd Quarter
- **1 Outstanding Issue from 2020:**
  - Tracy Trust #3-2 still has casing pressure
  - Currently S/I & monitoring, transferred to Individual Well Bond
  - Current Operator plans to complete P&A in 2021 in conjunction with possible workover operations & field maintenance
- **No Citations Issued**
- **2021 Totals Through 3rd Quarter:**
  - 2 Well Inspections
  - 1 Facilities Inspection



METER PROVING OPERATIONS AT THE  
ML INVESTMENTS #2-3  
WILLOW FIELD, PAYETTE CO, ID  
PHOTO COURTESY J. THUM

**Please Direct All Questions & Suggestions  
to the IDL Division of Minerals, Navigable Waters, Oil & Gas**

<https://ogcc.idaho.gov/contact-us/>



**KAUFFMAN #1-9 WELL PAD LOOKING SW  
PAYETTE CO. ID  
NOVEMBER 2021  
PHOTO COURTESY J. THUM**

**2021 4th Quarter Report will be provided during 1st Quarter 2022**