

Quarterly Report to the Commission

Idaho Code § 47-315(9)

Idaho Code § 47-324(6)

2nd Quarter 2021 (April - June)



SUBMITTED TO THE COMMISSION AS
A SUPPLEMENT TO THE SECRETARY'S REPORT

AUGUST 24, 2021

JAMES THUM

IDAHO DEPARTMENT OF LANDS

TITLE 47
MINES AND MINING
CHAPTER 3
OIL AND GAS WELLS — GEOLOGIC INFORMATION, AND
PREVENTION OF WASTE

§ 47-324(6) The department shall report quarterly to the commission on the produced volumes of oil and gas, sales volumes of oil and gas, and the meeting of industry standards.

Volumes Produced & Sold – 2nd Quarter 2021

Comparison to Previous Quarter / Previous Year

<u>Volumes Produced</u>	<u>Cum. Gas (MCF)</u>	<u>Condensate (BBL)</u>	<u>NGLs (Gallons)*</u>	<u>Cum. Oil (BBL)</u>	<u>H2O (BBL)</u>
2nd Quarter 2021	270,171	8,139	241,581	0	883
1st Quarter 2021	324,627	6,843	317,681	0	3,429
Increase / Decrease	-54,456	1,296	-76,100	0	-2,546
% Difference	-16.8	18.9	-24.0	NA	-74.2
vs 2nd Qtr 2020**	100	100	100	NA	100
<u>Volumes Sold***</u>	<u>Gas (MMBtu)</u>	<u>Condensate (BBL)</u>	<u>NGLs (Gallons)</u>	<u>Oil (BBL)</u>	
2nd Quarter 2021	272,213	9,140	244,341	0	
1st Quarter 2021	332,239	7,544	275,705	0	
Increase / Decrease	-60,026	1,596	-31,364	0	
% Difference	-18.1	21.2	-11.4	0	
vs 2nd Qtr 2020**	100	100	100	NA	

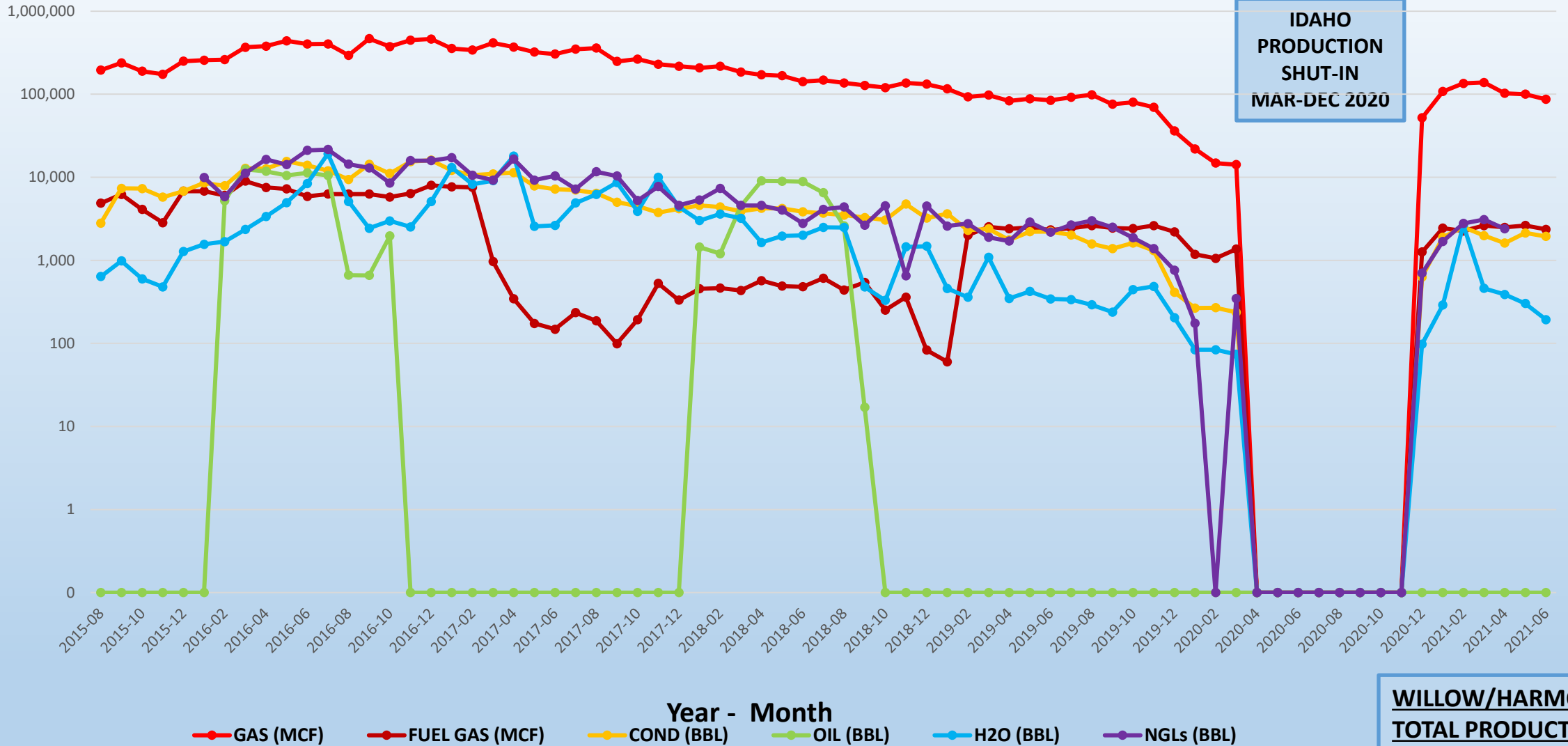
*Denotes Plant Production from Highway 30 Facility

**All Idaho Production Shut-In March 21, 2020 to December 15, 2020. No Sales Volumes reported for 1st Quarter 2020

***Sold Volumes Reports are current for December 2020 through June 2021. December 2020 Liquids sold in 2021.

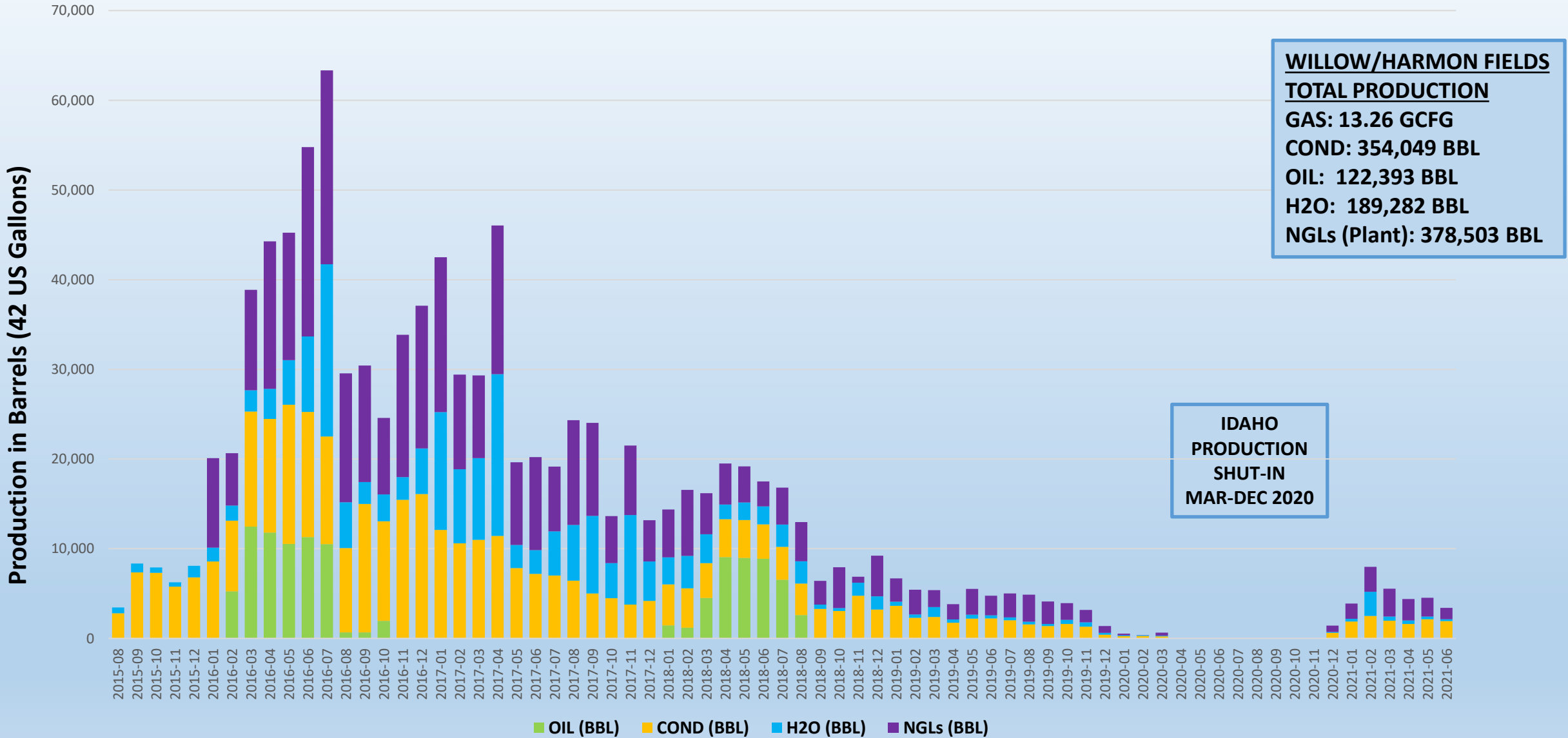
Western Idaho Production - August 2015 to Present

Gas Production in MCF / Liquids Production in BBLs



WILLOW/HARMON FIELDS
TOTAL PRODUCTION
GAS: 13.26 GCFG
COND: 354,049 BBL
OIL: 122,393 BBL
H2O: 189,282 BBL
NGLs (Plant): 378,503 BBL

Western Idaho Production Liquids Output - August 2015 to Present



SW IDAHO – 2020 PRODUCTION DAYS

2020 Production Days

29	30	31	1-Jan	2	3	4
5	6	7	8	9	10	11
12	13	14	15	16	17	18
19	20	21	22	23	24	25
26	27	28	29	30	31	1-Feb
2	3	4	5	6	7	8
9	10	11	12	13	14	15
16	17	18	19	20	21	22
23	24	25	26	27	28	29
1-Mar	2	3	4	5	6	7
8	9	10	11	12	13	14
15	16	17	18	19	20	21
22	23	24	25	26	27	28
29	30	31*	1-Apr	2	3	4
5	6	7	8	9	10	11
12	13	14	15	16	17	18
19	20	21	22	23	24	25
26	27	28	29	30	1-May	2
3	4	5	6	7	8	9
10	11	12	13	14	15	16
17	18	19	20	21	22	23
24	25	26	27	28	29	30
31	1-Jun	2	3	4	5	6
7	8	9	10	11	12	13
14	15	16	17	18	19	20
21	22	23	24	25	26	27
28	29	30	1-Jul	2	3	4

Q1:

55 Days

36 Days

Q2:

0 Days

91 Days

28	29	30	1-Jul	2	3	4
5	6	7	8	9	10	11
12	13	14	15	16	17	18
19	20	21	22	23	24	25
26	27	28	29	30	31	1-Aug
2	3	4	5	6	7	8
9	10	11	12	13	14	15
16	17	18	19	20	21	22
23	24	25	26	27	28	29
30	31	1-Sep	2	3	4	5
6	7	8	9	10	11	12
13	14	15	16	17	18	19
20	21	22	23	24	25	26
27	28	29	30	1-Oct	2	3
4	5	6	7	8	9	10
11	12	13	14	15	16	17
18	19	20	21	22	23	24
25	26	27	28	29	30	31
1-Nov	2	3	4	5	6	7
8	9	10	11	12	13	14
15	16	17	18	19	20	21
22	23	24	25	26	27	28
29	30	1-Dec	2	3	4	5
6	7	8	9	10	11	12
13	14	15	16	17	18	19
20	21	22	23	24	25	26
27	28	29	30	31	1-Jan	2

Q3:

0 Days

92 Days

Q4:

17 Days

75 Days

Total: Producing 72 Days

Shut-In 294 Days

*March 31, 2020 - M6.5 Earthquake Near Stanley, ID

SW IDAHO – 2021 PRODUCTION DAYS

2021 Production Days

28	29	30	31	1-Jan	2	3
4	5	6	7	8	9	10
11	12	13	14	15	16	17
18	19	20	21	22	23	24
25	26	27	28	29	30	31
1-Feb	2	3	4	5	6	7
8	9	10	11	12	13	14
15	16	17	18	19	20	21
22	23	24	25	26	27	28
1-Mar	2	3	4	5	6	7
8	9	10	11	12	13	14
15	16	17	18	19	20	21
22	23	24	25	26	27	28
29	30	31	1-Apr	2	3	4
5	6	7	8	9	10	11
12	13	14	15	16	17	18
19	20	21	22	23	24	25
26	27	28	29	30	1-May	2
3	4	5	6	7	8	9
10	11	12	13	14	15	16
17	18	19	20	21	22	23
24	25	26	27	28	29	30
31	1-Jun	2	3	4	5	6
7	8	9	10	11	12	13
14	15	16	17	18	19	20
21	22	23	24	25	26	27
28	29	30	1-Jul	2	3	4

Q1:

90 Days

00 Days

Q2:

91 Days

0 Days

28	29	30	1-Jul	2	3	4
5	6	7	8	9	10	11
12	13	14	15	16	17	18
19	20	21	22	23	24	25
26	27	28	29	30	31	1-Aug
2	3	4	5	6	7	8
9	10	11	12	13	14	15
16	17	18	19	20	21	22
23	24	25	26	27	28	29
30	31	1-Sep	2	3	4	5
6	7	8	9	10	11	12
13	14	15	16	17	18	19
20	21	22	23	24	25	26
27	28	29	30	1-Oct	2	3
4	5	6	7	8	9	10
11	12	13	14	15	16	17
18	19	20	21	22	23	24
25	26	27	28	29	30	31
1-Nov	2	3	4	5	6	7
8	9	10	11	12	13	14
15	16	17	18	19	20	21
22	23	24	25	26	27	28
29	30	1-Dec	2	3	4	5
6	7	8	9	10	11	12
13	14	15	16	17	18	19
20	21	22	23	24	25	26
27	28	29	30	31	1-Jan	2

Q3:

55 Days

00 Days

Q4:

XX Days

XX Days

Total:

Producing

Shut-In

236 Days

0 Days

Plant – Transportation – Sold Volumes

1-Year Running Totals – June 2020 through June 2021*

<u>Residue Gas (MCF)</u>			<u>Gas Sold (MMBtu)</u>	<u>Produced vs Sold (Variance)</u>	
637,975			649,782	-1.9%	
<u>Plant Condensate (BBL)</u>	<u>Condensate Transported**</u>	<u>Produced vs Transported (Variance)</u>	<u>Condensate Sold (BBL)</u>	<u>Produced vs Sold (Variance)</u>	<u>Transported vs Sold (Variance)</u>
15,562	16,684	-7.2%	16,685	-7.2%	0%
<u>Plant NGLs (Gallons)</u>	<u>NGLs Transported</u>	<u>Produced vs Transported (Variance)</u>	<u>NGLs Sold (Gallons)</u>	<u>Produced vs Sold (Variance)</u>	<u>Transported vs Sold (Variance)</u>
588,688	603,699	-2.6%	520,046	11.7%	13.9%
<u>Oil Produced (BBL)</u>	<u>Oil Transported</u>	<u>Produced vs Transported (Variance)</u>	<u>Oil Sold (BBL)</u>	<u>Produced vs Sold (Variance)</u>	<u>Transported vs Sold (Variance)</u>
0	0	---	0	---	---

Numbers in **RED** indicate variance in excess of 5%

*Liquids Transportation and Sales Volumes may be delayed 60 to 90 days after production is reported.

**Condensate Transporter is also Purchaser (Pinnacle) since December 2020 field re-start.

Well & Permit Activity

2nd Quarter 2021

<u>Wells</u>	<u>Active Permits*</u>	<u>Drilling wells</u>	<u>Producing wells</u>	<u>Comments</u>	
April	12	0	6	5 Wells in Willow Field Producing 1 Well in Harmon Field Producing	
May	12	0	6		
June	13	0	6	APD for Barlow 2-14 Approved	
<u>Other</u>	<u>Sundry Notices</u>	<u>Workover / P&A</u>	<u>APDs Received</u>	<u>APDs Approved</u>	<u>APDs Denied</u>
April	0	0	0	0	0
May	0	0	0	0	0
June	0	0	0	1	0

*6 Producing Wells, 6 Shut-in Wells, 1 Pending P&A

TITLE 47
MINES AND MINING
CHAPTER 3
OIL AND GAS WELLS — GEOLOGIC INFORMATION, AND PREVENTION OF
WASTE

§ 47-315(9) The commission shall require the department to perform the following activities on an annual basis:

- (a) Inspect and report on all active well sites and equipment;**
- (b) Visit and file a report on production and processing facilities; and**
- (c) Submit an opinion as to any areas of concern, as identified on inspection reports.**

Inspection Activity – 2nd Quarter 2021

- **Well Inspections**
 - 0 during 2nd Quarter
- **Gas Facility Inspections**
 - 0 during 2nd Quarter
- **1 Outstanding Issue from 2020:**
 - Tracy Trust #3-2 still has casing pressure
 - Currently S/I & monitoring, transferred to Individual Well Bond
 - Current Operator plans to complete P&A in 2021 in conjunction with possible workover operations & field maintenance
- **No Citations Issued**
- **2021 Totals Through 2nd Quarter:**
 - 0 Well Inspections
 - 0 Facilities Inspections



DJS 1-15 WELL PAD LOOKING NW
WILLOW FIELD, PAYETTE CO. ID
SEPTEMBER 2019
PHOTO COURTESY D. SCHWARZ

**Please Direct All Questions & Suggestions
to the IDL Division of Minerals, Public Trust, Oil & Gas**
<https://ogcc.idaho.gov/contact-us/>



**LITTLE WILLOW GATHERING FACILITY
PAYETTE CO. ID
LOOKING SW FROM ML 2-10
WELL PAD, JUNE 2017
PHOTO COURTESY J. THUM**

2021 3rd Quarter Report will be provided during 4th Quarter 2021