

Quarterly Report to the Commission

Idaho Code § 47-315(9)

Idaho Code § 47-324(6)

4th Quarter 2020 (October - December)



SUBMITTED TO THE COMMISSION AS
A SUPPLEMENT TO THE SECRETARY'S REPORT
FEBRUARY 26, 2021
JAMES THUM
IDAHO DEPARTMENT OF LANDS

TITLE 47
MINES AND MINING
CHAPTER 3
OIL AND GAS WELLS — GEOLOGIC INFORMATION, AND
PREVENTION OF WASTE

§ 47-324(6) The department shall report quarterly to the commission on the produced volumes of oil and gas, sales volumes of oil and gas, and the meeting of industry standards.

Volumes Produced & Sold – 4th Quarter 2020**

Comparison to Previous Quarter / Previous Year

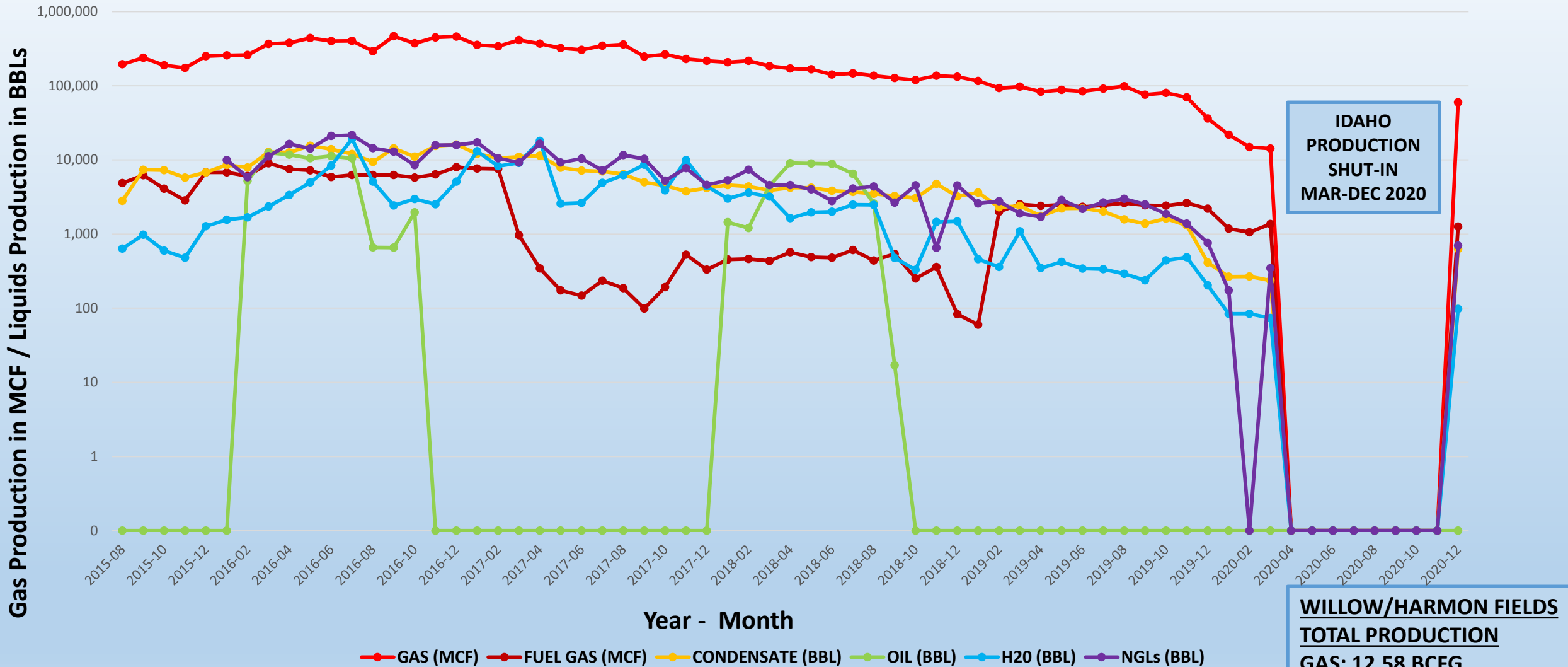
<u>Volumes Produced</u>	<u>Cum. Gas (MCF)</u>	<u>Condensate (BBL)</u>	<u>NGLs (Gallons)*</u>	<u>Cum. Oil (BBL)</u>	<u>H2O (BBL)</u>
4th Quarter 2020	43,175	578	29,405	0	98
3rd Quarter 2020	0	0	0	0	0
Increase / Decrease	43,175	578	29,405	0	98
% Difference	100	100	100	NA	100
vs 4th Quarter 2019	-73.3	-90	-82.6%	NA	-91.3
<u>Volumes Sold***</u>	<u>Gas (MMBtu)</u>	<u>Condensate (BBL)</u>	<u>NGLs (Gallons)</u>	<u>Oil (BBL)</u>	
4th Quarter 2020	0	0	0	0	
3rd Quarter 2020	0	0	0	0	
Increase / Decrease	0	0	0	0	
% Difference	NA	NA	NA	NA	
vs 4th Quarter 2019	-100	-100	NA	NA	

*Denotes Plant Production from Highway 30 Facility

**Note: All Idaho Production Shut-In March 21, 2020 to December 15, 2020

***Sold Volumes Reports are outstanding as of February 26, 2021

Western Idaho Production - August 2015 to Present



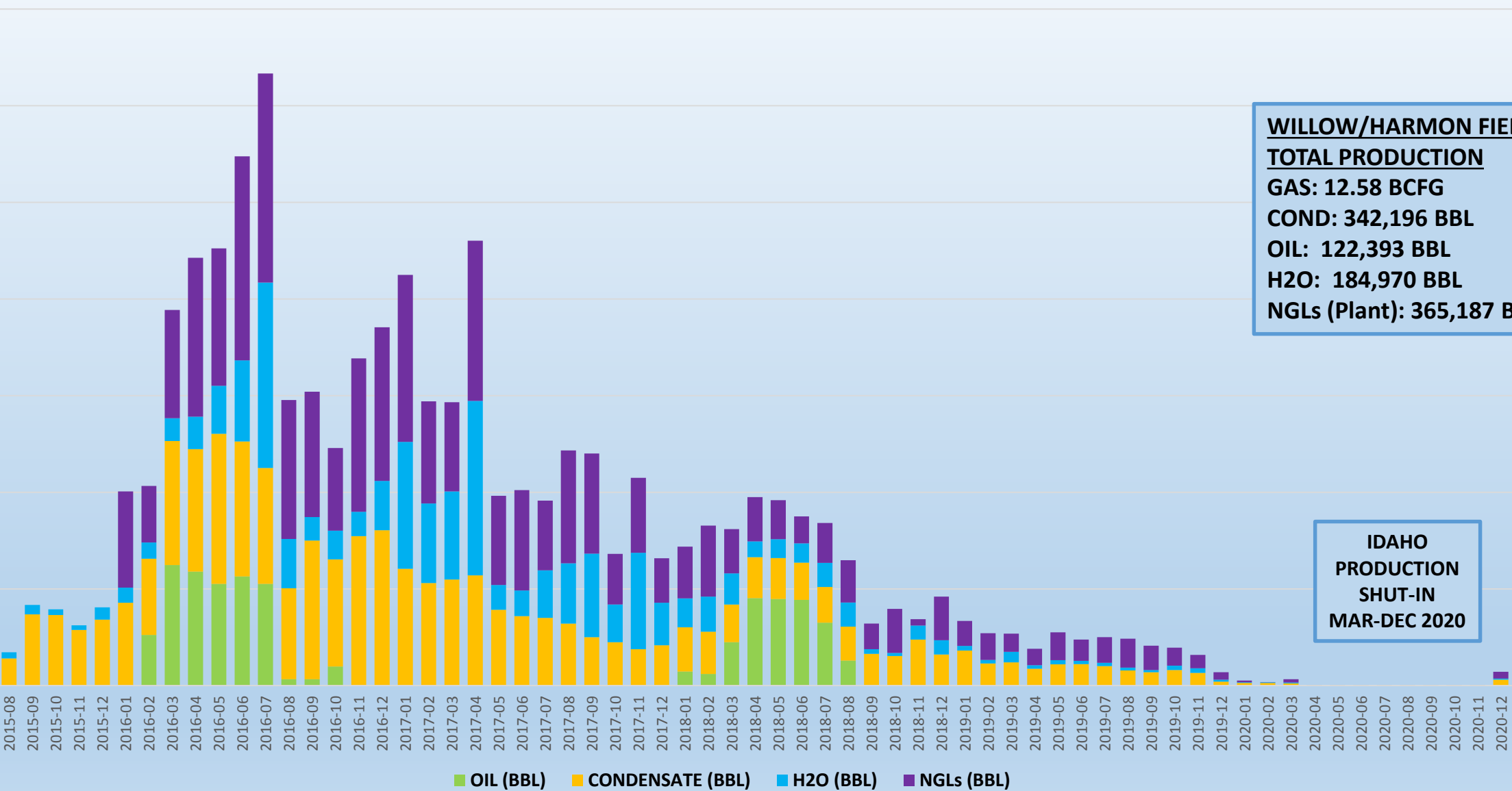
WILLOW/HARMON FIELDS
TOTAL PRODUCTION
GAS: 12.58 BCFG
COND: 342,196 BBL
OIL: 122,393 BBL
H2O: 184,970 BBL
NGLs (Plant): 365,187 BBL

Western Idaho Production Liquids Output - August 2015 to Present

Production in Barrels (42 US Gallons)

WILLOW/HARMON FIELDS
TOTAL PRODUCTION
GAS: 12.58 BCFG
COND: 342,196 BBL
OIL: 122,393 BBL
H2O: 184,970 BBL
NGLs (Plant): 365,187 BBL

**IDAHO
PRODUCTION
SHUT-IN
MAR-DEC 2020**



Year - Month

SW IDAHO – 2020 PRODUCTION DAYS

2020 Production Days

29	30	31	1-Jan	2	3	4
5	6	7	8	9	10	11
12	13	14	15	16	17	18
19	20	21	22	23	24	25
26	27	28	29	30	31	1-Feb
2	3	4	5	6	7	8
9	10	11	12	13	14	15
16	17	18	19	20	21	22
23	24	25	26	27	28	29
1-Mar	2	3	4	5	6	7
8	9	10	11	12	13	14
15	16	17	18	19	20	21
22	23	24	25	26	27	28
29	30	31*	1-Apr	2	3	4
5	6	7	8	9	10	11
12	13	14	15	16	17	18
19	20	21	22	23	24	25
26	27	28	29	30	1-May	2
3	4	5	6	7	8	9
10	11	12	13	14	15	16
17	18	19	20	21	22	23
24	25	26	27	28	29	30
31	1-Jun	2	3	4	5	6
7	8	9	10	11	12	13
14	15	16	17	18	19	20
21	22	23	24	25	26	27
28	29	30	1-Jul	2	3	4

Q1:

55 Days

36 Days

Q2:

0 Days

91 Days

28	29	30	1-Jul	2	3	4
5	6	7	8	9	10	11
12	13	14	15	16	17	18
19	20	21	22	23	24	25
26	27	28	29	30	31	1-Aug
2	3	4	5	6	7	8
9	10	11	12	13	14	15
16	17	18	19	20	21	22
23	24	25	26	27	28	29
30	31	1-Sep	2	3	4	5
6	7	8	9	10	11	12
13	14	15	16	17	18	19
20	21	22	23	24	25	26
27	28	29	30	1-Oct	2	3
4	5	6	7	8	9	10
11	12	13	14	15	16	17
18	19	20	21	22	23	24
25	26	27	28	29	30	31
1-Nov	2	3	4	5	6	7
8	9	10	11	12	13	14
15	16	17	18	19	20	21
22	23	24	25	26	27	28
29	30	1-Dec	2	3	4	5
6	7	8	9	10	11	12
13	14	15	16	17	18	19
20	21	22	23	24	25	26
27	28	29	30	31	1-Jan	2

Q3:

0 Days

92 Days

Q4:

17 Days

75 Days

Total:

Producing 72 Days

Shut-In 294 Days

*March 31, 2020 - M6.5 Earthquake Near Stanley, ID

Plant – Transportation – Sold Volumes

1-Year Running Totals – January 2020 through December 2020*

<u>Residue Gas (MCF)</u>			<u>Gas Sold* (MMBtu)</u>	<u>Produced vs Sold (Variance)</u>	
79,415			45,301	43%	
<u>Plant Condensate (BBL)</u>	<u>Condensate Transported</u>	<u>Produced vs Transported (Variance)</u>	<u>Condensate Sold** (BBL)</u>	<u>Produced vs Sold (Variance)</u>	<u>Transported vs Sold (Variance)</u>
2,091	1,363	34.8%	683	67.3%	49.9%
<u>Plant NGLs (Gallons)</u>	<u>NGLs Transported</u>	<u>Produced vs Transported (Variance)</u>	<u>NGLs Sold*** (Gallons)</u>	<u>Produced vs Sold (Variance)</u>	<u>Transported vs Sold (Variance)</u>
51,261	42,852	16.4%	0	100%	100%
<u>Oil Produced (BBL)</u>	<u>Oil Transported</u>	<u>Produced vs Transported (Variance)</u>	<u>Oil Sold (BBL)</u>	<u>Produced vs Sold (Variance)</u>	<u>Transported vs Sold (Variance)</u>
0	0	---	0	---	---

Numbers in **RED** indicate variance in excess of 5%

*Waiting on December 2020 Sales Reporting

**No Condensate Sales Reported for period February 2020 through December 2020

***No NGL Sales Reported for 12-month period. Sales occurred out of state, out of country

Well & Permit Activity

4th Quarter 2020

<u>Wells</u>	<u>Active Permits</u>	<u>Drilling wells</u>	<u>Producing wells</u>	<u>Comments</u>	
October	12	0	0	Willow Field Shut-in 3/21/2020	
November	12	0	0		
December	12	0	6	5 Wells in Willow Field Producing 1 Well in Harmon Field Producing	
<u>Other</u>	<u>Sundry Notices</u>	<u>Workover / P&A</u>	<u>APDs Received</u>	<u>APDs Approved</u>	<u>APDs Denied</u>
October	3	3	0	1*	0
November	0	0	0	0	0
December	6**	0	0	0	0

*Application for Permit to Drill (APD): SROG #2-14 Barlow, approved by OGCC October 26, waiting on Contested Case

**Received/approved verbal request from SROG to turn production on mid-December. Written sundry notices filed January 2021.

**TITLE 47
MINES AND MINING
CHAPTER 3
OIL AND GAS WELLS — GEOLOGIC INFORMATION, AND PREVENTION OF
WASTE**

§ 47-315(9) The commission shall require the department to perform the following activities on an annual basis:

- (a) Inspect and report on all active well sites and equipment;**
- (b) Visit and file a report on production and processing facilities; and**
- (c) Submit an opinion as to any areas of concern, as identified on inspection reports.**

Inspection Activity – 4th Quarter 2020

- **Well Inspections**
 - 15 during 4th Quarter
- **Gas Facility Inspections**
 - 2 during 4th Quarter
- **1 Outstanding Issue from 2020:**
 - Tracy Trust #3-2 still has casing pressure
 - Currently S/I & monitoring, transferred to Individual Well Bond
 - Current Operator plans to complete P&A in 2021 in conjunction with possible workover operations & field maintenance
- **No Citations Issued**
- **2020 Totals:**
 - 27 Well Inspections
 - 4 Facilities Inspections



ESPINO #1-2 WELL HEAD
HAMILTON FIELD, PAYETTE CO. ID
DECEMBER 2019
PHOTO COURTESY J. THUM

**Please Direct All Questions & Suggestions
to the IDL Division of Minerals, Public Trust, Oil & Gas**
<https://ogcc.idaho.gov/contact-us/>



**TX RRC ORPHANED WELL
PLUGGING PROGRAM
LULING, TX, NOVEMBER 2019
PHOTO COURTESY J. THUM**

2021 1st Quarter Report will be provided during 2nd Quarter 2021