

## James Thum

---

**From:** James Thum  
**Sent:** Wednesday, October 02, 2019 2:29 PM  
**To:** Diane Kassab; Mitch E. Gore  
**Subject:** Re: Idaho - P&A Plan

**Categories:** Operations & Inspections, Application processing

Thank you Diane. The revisions look ok. Please notify us when you know for certain at least 24 hours in advance of commencing operations.

Thank you,

James

---

From: Diane Kassab <DKassab@high-mesa.com>  
Sent: Wednesday, October 2, 2019 10:42:45 AM  
To: James Thum <jthum@idl.idaho.gov>  
Subject: RE: Idaho - P&A Plan

Hi James,  
Sorry to bother you, but just wanted to be sure we didn't need to provide anything else before we move on location next Tuesday, October 8. We have plugging approvals for all seven wells, however, Mitch had revised a few procedures. Thanks so much.

Diane  
281-994-5429

From: James Thum <jthum@idl.idaho.gov>  
Sent: Monday, September 30, 2019 11:14 AM  
To: Mitch E. Gore <MGore@high-mesa.com>; Mick Thomas <mthomas@idl.idaho.gov>  
Cc: Diane Kassab <DKassab@high-mesa.com>  
Subject: Re: Idaho - P&A Plan

Hi Mitch,  
Thanks for the revisions, I will review them later tonight. The permits to plug are good for one year. The department will require a sundry notice for plugging activity submitted at least 24 hours in advance of commencement of operations with the estimated start date.

Let me know if you have any questions.

Regards,

James

---

From: Mitch E. Gore <MGore@high-mesa.com<mailto:MGore@high-mesa.com>>  
Sent: Monday, September 30, 2019 9:23:55 AM  
To: James Thum <jthum@idl.idaho.gov<mailto:jthum@idl.idaho.gov>>; Mick Thomas <mthomas@idl.idaho.gov<mailto:mthomas@idl.idaho.gov>>  
Cc: Diane Kassab <DKassab@high-mesa.com<mailto:DKassab@high-mesa.com>>

Subject: Idaho - P&A Plan

James – Attached are the P&A procedures for the 7 wells we plan to begin plugging next week 10/8/19. A few of them we've discussed already (Island Cap and Tracy Trust), the others should be similar if not the same as previously approved plans.

Do we need to revise the Sundry notifications or can you send us a note back stating that our previous sundries are acceptable with the attached procedures?

I know that James said he'd be out this week, so I've copied Mick Thomas as well.

Thanks

Mitch

# P&A Procedure

- Well Name: Korn #1-22
- AFE # AMI00014
- API:11-075-20014
- Field: Hamilton
- County: Payette CO, ID

## Well Info:

- TD 2328'
- PBD 2107'
- Current Perfs: 1878'-1900'; 2078' – 2100'
- Well Head 2 9/16" 5K FE with 2 7/8" EU 8rd top connection
- Prod Csg 5 1/2" 17# J-55 LTC
- Surface Csg 9 5/8" 35# J-55 STC
- Tbg 2 7/8" 6.5# J-55 EU 8rd
- Pkr AS1X at 1843'
- Well Status
- SITP 900 psi
- SICP 120 psi

Objective: P&A well

P&A well rigless. Sqz perfs, set CIBP at 1830', perf tbg at 1825' and circulate in 183 sk plug from 1825' to surface.

Procedure:

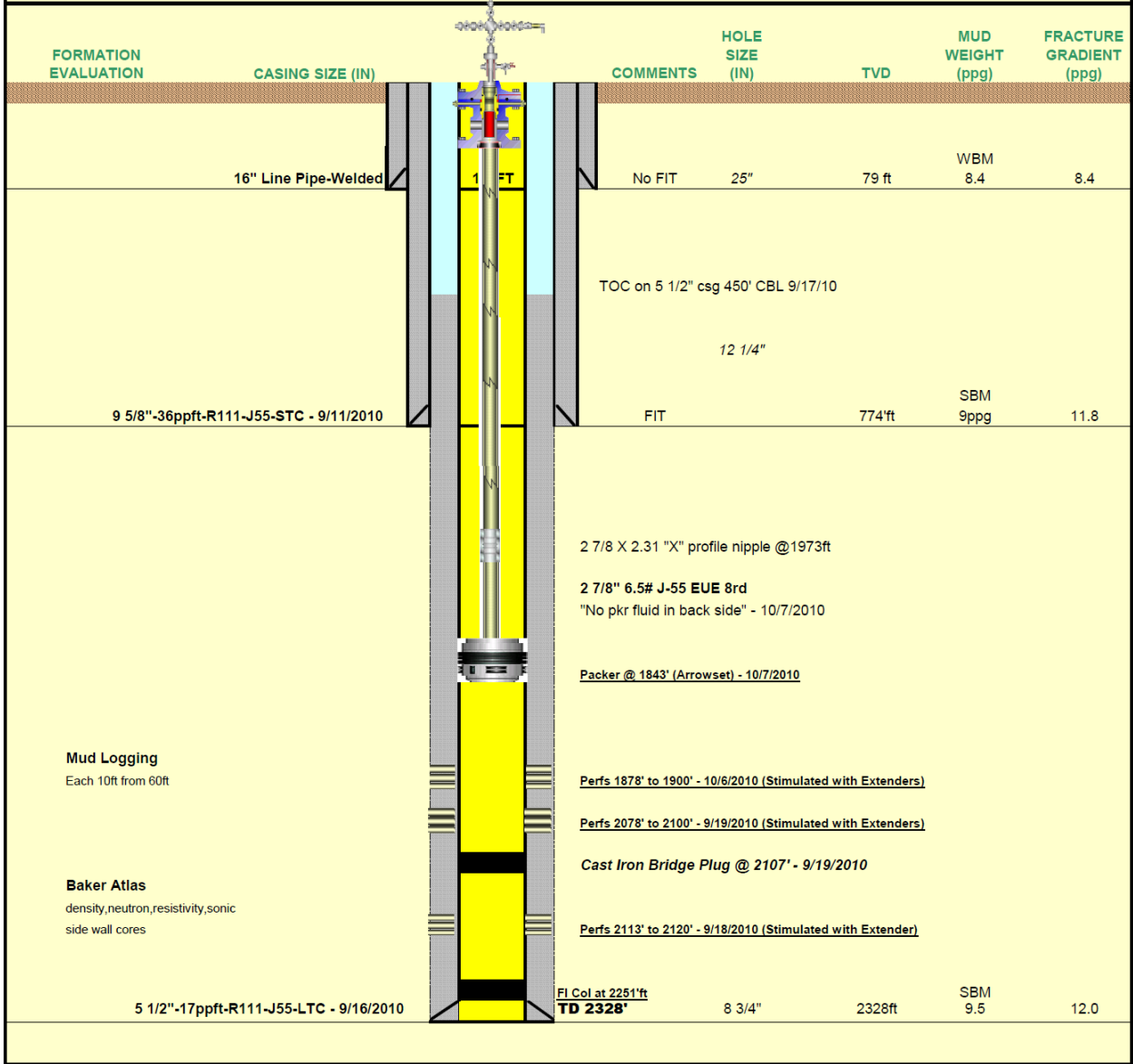
1. MIRU P&A Spread (WLU, Cmt unit, vac trucks).
2. JSA
3. Take pressures and record same.
4. MU lines and test to 500 / 2000 psi.
5. Test backside to 300 psi.
6. Establish injection rate into perms.
7. Mix 50 sks cmt.
8. Pump slurry and displace with 10.7 bbls. Plug #1
9. MU GR on WL.
10. RIH to 1830'. POOH.
11. RIH with CIBP and set at 1830'. POOH. Plug #2
12. RIH with RTG, pressure up tbg to 100 psi.
13. Perforate tbg at 1825'. POOH.
14. Mix 183 sk cmt.
15. Circulate in slurry leaving plug from 1825' to surface. Plug #3
16. SD 12 hrs.
17. RD Cmt unit, WLU.
18. Dig bell hole around well head and cellar.
19. Remove cellar.
20. Check SITP/SICP and blow down same to 0 psig – Monitor tbg and csg and confirm no flow.
21. Cut window in 9 5/8" csg at 6' below ground level.
22. Cut 5 1/2" csg and 2 7/8" tbg from window and let drop.
23. ND prod tree.
24. Make full cut on 9 5/8" (Z pattern) and remove A and B section of well head (make cut flush with 16" conductor 6' below surface).
25. Suck out or blow out water from 16" cond and 9 5/8" csg.
26. Mix and pour in 5 sks cmt from 6' to 11'. Plug #4
27. Weld 16" plate on conductor.
28. MOL.

Current WBS

**Alta Mesa Services, LP**

**Korn 1-22 COMPLETION SCHEMATIC  
WELLBORE DATA SHEET**

<b>LEASE:</b>	Bridge Energy Inc	<b>TOTAL DEPTH:</b>	2343'
<b>WELL:</b>	Korn 1-22	<b>SURFACE LOCATION:</b>	N43-56-11.42
<b>LOCATION:</b>	Sect 22/Township 7N/Range 4W	<b>BOTTOM HOLE LOCATION:</b>	W116-48-15.65
	Payette County		N43- 56-11.42
<b>SPUD DATE:</b>	September 10, 2010		W116-48-15.65
<b>OBJECTIVE:</b>	Hamilton Sands	<b>ELEVATION:</b>	2366'
		<b>ELEVATION(KB):</b>	2373'



Proposed P&A WBS

