

**IDAHO DEPARTMENT OF LANDS**  
**DIRECTOR'S OFFICE**  
300 N 6th Street Suite 103  
PO Box 83720  
Boise ID 83720-0050  
Phone (208) 334-0200  
Fax (208) 334-5342



MICK THOMAS, DIVISION ADMINISTRATOR  
SECRETARY TO THE COMMISSION

**IDAHO OIL AND GAS**  
**CONSERVATION COMMISSION**  
*Kevin Dickey, Chairman*  
*Marc Shigeta, Vice-Chairman*  
*Jim Classen*  
*Renee Love, Ph.D*  
*Dustin T. Miller*

October 11, 2018

Max Jameson  
Regulatory Coordinator  
AM Idaho, LLC  
15021 Katy Frwy., Suite 400  
Houston, TX 77094

RE: Application and Notice of Intention to Abandon – Espino #1-2 (USWN 11-075-20004), White #1-10 (USWN 11-075-20013), Korn #1-22 (USWN 11-075-20014), Tracy Trust #3-2 (USWN 11-075-20011) and State #1-17 (USWN 11-075-20005)

Dear Mr. Jameson:

The Idaho Department of Lands has received AM Idaho, LLC's Application and Notice of Intention to Abandon Well for the following five wells: Espino #1-2 (USWN 11-075-20004), White #1-10 (USWN 11-075-20013), Korn #1-22 (USWN 11-075-20014), Tracy Trust #3-2 (USWN 11-075-20011) and State #1-17 (USWN 11-075-20005). The permits to plug the above named wells are approved under the following conditions and will expire one (1) year from the date of this letter:

1. Plugging operations must follow the procedures outlined in the Notices of Intention to Abandon that were submitted to the Department September 27, 2018. Changes to the procedures must be provided to the Department by Sundry Notice and in accordance to IDAPA 20.07.02.502.
2. A completed copy of the Plugging Record shall be filed with the Department no more than thirty (30) days after completion of plugging operations in accordance with IDAPA 20.07.02.502.06. A copy of this form is attached and can be downloaded from the Department of Lands website.

If you have any questions, please don't hesitate to contact me at your earliest convenience.

Sincerely,



**James Thum**  
Oil and Gas Program Manager  
Idaho Dept of Lands  
Phone: (208) 334-0243  
[jthum@idl.idaho.gov](mailto:jthum@idl.idaho.gov)

cc: Diane Kassab – via email  
Michael Christian, Marcus, Christian, Hardee & Davies LLP – via email



**AM IDAHO, LLC**

15021 Katy Freeway, Suite 400  
Houston, Texas 77094  
(281) 530-0991  
(281) 530-5278 FAX

DEPT. OF LANDS  
2018 OCT -1 AM 10:55  
BOISE, IDAHO

September 27, 2018

James Thum  
Oil & Gas Program Manager  
Idaho Department of Lands  
300 N. 6<sup>th</sup> Street, Suite 103  
Boise, ID 83702

RE: Notice of Intention to Abandon Well--REVISED  
**Tracy Trust 3-2, API #11-075-20011 in Payette County**

Dear Mr. Thum,

This letter is to inform you of Alta Mesa Services, LP intent to permanently plug and abandon the **Tracy Trust 3-2** well located in Section 2, Township 7N, Range 4W. Preliminary review determines that this well might not be cost effective for us to build the required infrastructure in order to produce it. Attached is the Wellbore Diagram from November 2010 for your reference.

Following is the procedure that we plan to use for the proposed work:

1. This well is natural gas and allows us to pump cement plug from the surface down 2-7/8" tubing and inject into open perforations. Move in cement pump truck and spot 100' cement plug across perforations at 1,586'-1753'.
2. Move in electric wireline unit and perforate existing 2-7/8" tubing 1,510'-512' MD.
3. Circulate 500' balanced cement plug in 2-7/8" and 5-1/2" from 1,012' to 1,512' MD.
4. Cut 2-7/8" @ 500' MD. POOH with 500' of 2-7/8".
5. Set 5-1/2" CIBP @ 500' MD.
6. Perforate 5-1/2" @ 490' - 492' MD.
7. Circulate cement down 5-1/2" and up 9-5/8" surface casing filing to surface.
8. Cut off wellhead and cap same with metal plate per IDL regulations. Cut off all pipe at 6' below ground level. Weld steel plate on top of pipe. Mark location with at least 4" diameter pipe at least 10' in length, leaving 4' above the ground level. This pipe is to be welded to the surface casing or embedded in cement.
9. Restore location per IDL and landowner requirement.
10. File final abandonment records with state.

We intend to begin this work as soon as possible, in order to use resources efficiently in completing work on other wells as explained in previous Sundry Notices. Thank you for your consideration of this request. If you should have any further questions, please feel free to contact me at **281-944-0638**.

Sincerely,

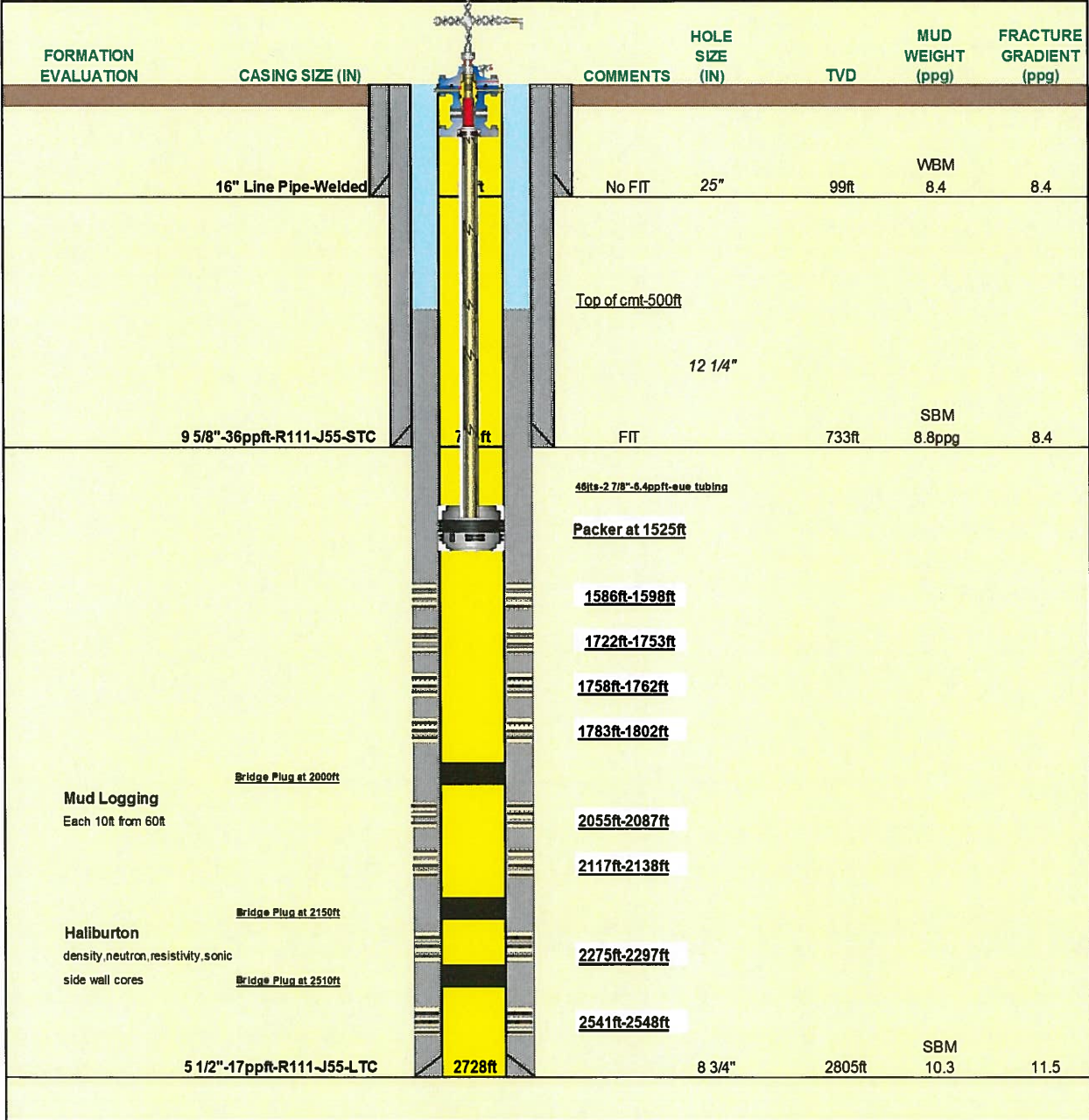
Max Jameson  
Regulatory Coordinator

# AM Idaho, LLC

## TRACY TRUST 3-2

### WELLBORE DATA SHEET

LEASE:	Bridge Energy Inc	TOTAL DEPTH:	2815ft
WELL:	Tracy Trust 3-2	SURFACE LOCATION:	N43-58-22.720
LOCATION:	Sect 2/Township 7N/Range 4W	BOTTOM HOLE LOCATION:	W116-47-19.085
	Payette County		N43-58-22.720
SPUD DATE:	August		W116-47-19.085
OBJECTIVE:	Hamilton Sands	ELEVATION:	2246ft
		ELEVATION(KB):	2263ft



# AM Idaho, LLC

## TRACY TRUST 3-2

### PROPOSED P&A

### WELLBORE DATA SHEET

LEASE: Bridge Energy Inc  
 WELL: Tracy Trust 3-2  
 LOCATION: Sect 2/Township 7N/Range 4W  
 Payette County  
 SPUD DATE: August  
 OBJECTIVE: Hamilton Sands

TOTAL DEPTH: 2815ft  
 SURFACE LOCATION: N43-58-22.720  
 W116-47-19.085  
 BOTTOM HOLE LOCATION: N43-58-22.720  
 W116-47-19.085  
 ELEVATION: 2246ft  
 ELEVATION(KB): 2263ft

FORMATION EVALUATION	CASING SIZE (IN)	COMMENTS	HOLE SIZE (IN)	TVD	MUD WEIGHT (ppg)	FRACTURE GRADIENT (ppg)
		<i>Cut off 6' below surface</i>				
	16" Line Pipe-Welded	No FIT	25"	99ft	WBM 8.4	8.4
	Top of cmt-500ft	Circulate cement down 5-1/2" and up 9-5/8" to surface. Estimated 210 sxs Class H cement from surface to 500'. Perforate 5-1/2" @ 490'-492' MD. Set 5-1/2" CIBP @ 500' MD Cut 2-7/8" @ 510' MD 12 1/4"				
	9 5/8"-36ppft-R111-J55-STC	FIT		733ft	SBM 8.8ppg	8.4
	46fts-2 7/8"-6.4ppft-eue tubing	Spot 500' balanced cement plug. 105 sxs Class H cement from 1,012' to 1,512'. Perforate 2-7/8" tubing @ 1,510'-512' MD  <b>Packer at 1525ft</b>  Spot 100' balanced cement plug across perforations. 21 sxs Class H cement				
	1586ft-1598ft 1722ft-1753ft 1758ft-1762ft 1783ft-1802ft  Bridge Plug at 2000ft  Mud Logging Each 10ft from 60ft  Bridge Plug at 2150ft  Haliburton density,neutron,resistivity,sonic side wall cores Bridge Plug at 2510ft					
	2055ft-2087ft					
	2117ft-2138ft					
	2275ft-2297ft					
	2541ft-2548ft					
	5 1/2"-17ppft-R111-J55-LTC		8 3/4"	2805ft	SBM 10.3	11.5
			2728ft			