

IDAHO DEPARTMENT OF LANDS
DIRECTOR'S OFFICE
300 N 6th Street Suite 103
PO Box 83720
Boise ID 83720-0050
Phone (208) 334-0200
Fax (208) 334-5342



MICK THOMAS, DIVISION ADMINISTRATOR
SECRETARY TO THE COMMISSION

IDAHO OIL AND GAS
CONSERVATION COMMISSION
Kevin Dickey, Chairman
Marc Shigeta, Vice-Chairman
Jim Classen
Renee Love, Ph.D
Dustin T. Miller

October 11, 2018

Max Jameson
Regulatory Coordinator
AM Idaho, LLC
15021 Katy Frwy., Suite 400
Houston, TX 77094

RE: Application and Notice of Intention to Abandon – Espino #1-2 (USWN 11-075-20004), White #1-10 (USWN 11-075-20013), Korn #1-22 (USWN 11-075-20014), Tracy Trust #3-2 (USWN 11-075-20011) and State #1-17 (USWN 11-075-20005)

Dear Mr. Jameson:

The Idaho Department of Lands has received AM Idaho, LLC's Application and Notice of Intention to Abandon Well for the following five wells: Espino #1-2 (USWN 11-075-20004), White #1-10 (USWN 11-075-20013), Korn #1-22 (USWN 11-075-20014), Tracy Trust #3-2 (USWN 11-075-20011) and State #1-17 (USWN 11-075-20005). The permits to plug the above named wells are approved under the following conditions and will expire one (1) year from the date of this letter:

1. Plugging operations must follow the procedures outlined in the Notices of Intention to Abandon that were submitted to the Department September 27, 2018. Changes to the procedures must be provided to the Department by Sundry Notice and in accordance to IDAPA 20.07.02.502.
2. A completed copy of the Plugging Record shall be filed with the Department no more than thirty (30) days after completion of plugging operations in accordance with IDAPA 20.07.02.502.06. A copy of this form is attached and can be downloaded from the Department of Lands website.

If you have any questions, please don't hesitate to contact me at your earliest convenience.

Sincerely,



James Thum
Oil and Gas Program Manager
Idaho Dept of Lands
Phone: (208) 334-0243
jthum@idl.idaho.gov

cc: Diane Kassab – via email
Michael Christian, Marcus, Christian, Hardee & Davies LLP – via email



AM IDAHO, LLC

15021 Katy Freeway, Suite 400
Houston, Texas 77094
(281) 530-0991
(281) 530-5278 FAX

DEPT. OF LANDS

2018 OCT -1 AM 10: 55

BOISE, IDAHO

September 27, 2018

James Thum
Oil & Gas Program Manager
Idaho Department of Lands
300 N. 6th Street, Suite 103
Boise, ID 83702

RE: Notice of Intention to Abandon Well
Hamilton State #1-17, API #11-075-20005 in Bridge (Hamilton Field, Payette County)

Dear Mr. Thum,

This letter is to inform you of Alta Mesa Services, LP intent to permanently plug and abandon the **Hamilton State #1-17** well located in Section **17**, Township **7N**, Range **4W**. Preliminary review determines that this well might not be cost effective for us to build the required infrastructure in order to produce it. Attached is the Wellbore Diagram from November 2010 for your reference.

Following is the procedure that we plan to use for the proposed work:

1. This well is natural gas and allows us to pump cement plug from the surface down 2-7/8" tubing and inject into open perforations. Move in cement pump truck and spot 100' cement plug across perforations at 1,875'-1,880'.
2. Move in electric wireline unit and perforate existing 2-7/8" tubing 1,800'-802' MD.
3. Circulate 500' balanced cement plug in 2-7/8" and 5-1/2" from 1,300' to 1,800' MD.
4. Cut 2-7/8" @ 500' MD. POOH with 500' of 2-7/8".
5. Set 5-1/2" CIBP @ 500' MD.
6. Perforate 5-1/2" @ 488' - 490' MD.
7. Circulate cement down 5-1/2" and up 9-5/8" surface casing filing to surface.
8. Cut off wellhead and cap same with metal plate per IDL regulations. Cut off all pipe at 6' below ground level. Weld steel plate on top of pipe. Mark location with at least 4" diameter pipe at least 10' in length, leaving 4' above the ground level. This pipe is to be welded to the surface casing or embedded in cement.
9. Restore location per IDL and landowner requirement.
10. File final abandonment records with state.

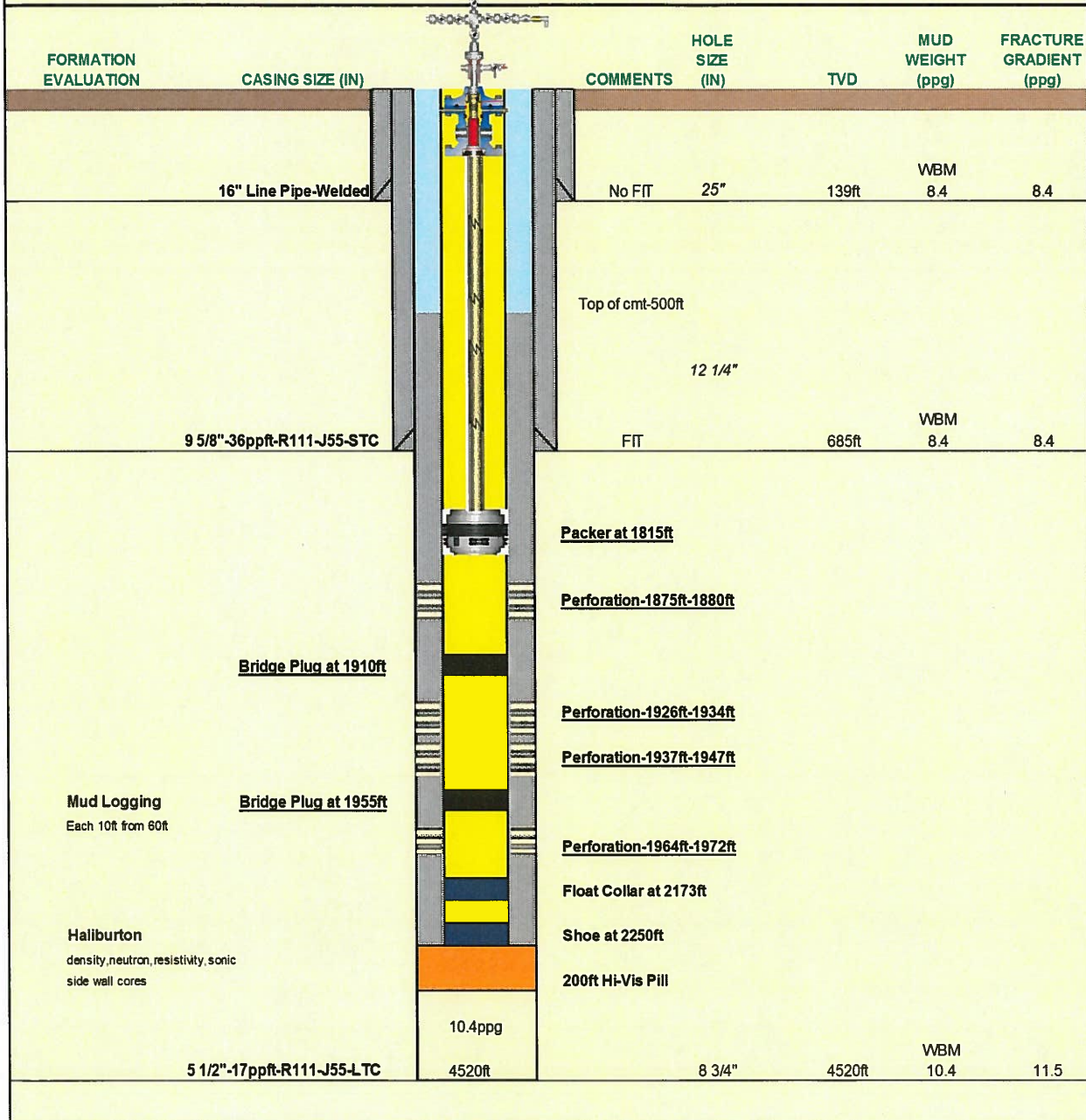
We intend to begin this work as soon as possible, in order to use resources efficiently in completing work on other wells as explained in previous Sundry Notices. Thank you for your consideration of this request. If you should have any further questions, please feel free to contact me at **281-944-0638**.

Sincerely,

Max Jameson
Regulatory Coordinator

AM Idaho, LLC HAMILTON 1-17 WELLBORE DATA SHEET

LEASE: Bridge Energy	TOTAL DEPTH: 4520ft
WELL: Hamilton 1-17	SURFACE LOCATION: N43-57-06.34
LOCATION: 3749 SW Third Avenue-New Plymouth Payette County	BOTTOM HOLE LOCATION: N43-57-06.34 W116-50-38.85
SPUD DATE: April	ELEVATION: 2340ft
OBJECTIVE: Chalk Creek/Poison Creek Columbia River Basalt	ELEVATION(KB): 2352KB



AM Idaho, LLC
HAMILTON 1-17
WELLBORE DATA SHEET
PROPOSED P&A

LEASE:	Bridge Energy	TOTAL DEPTH:	4520ft
WELL:	Hamilton 1-17	SURFACE LOCATION:	N43-57-06.34
LOCATION:	3749 SW Third Avenue-New Plymouth		W116-50-38.85
	Payette County	BOTTOM HOLE LOCATION:	N43-57-06.34
SPUD DATE:	April		W116-50-38.85
OBJECTIVE:	Chalk Creek/Poison Creek	ELEVATION:	2340ft
	Columbia River Basalt	ELEVATION(KB):	2352KB

FORMATION EVALUATION	CASING SIZE (IN)	COMMENTS	HOLE SIZE (IN)	TVD	MUD WEIGHT (ppg)	FRACTURE GRADIENT (ppg)
		<i>Cut off 6' below surface</i>				
	16" Line Pipe-Welded	No FIT	25"	139ft	WBM 8.4	8.4
	Top of cmt-500ft	Circulate cement down 5-1/2" and up 9-5/8" to surface. Estimated 210 sxs Class H cement from surface to 500'. Perforate 5-1/2" @ 488'-490' MD. Set 5-1/2" CIBP @ 500' MD Cut 2-7/8" @ 500' MD				
	9 5/8"-36ppft-R111-J55-STC	FIT	12 1/4"	685ft	WBM 8.4	8.4
	Perforation-1875ft-1880ft	Spot 500' balanced cement plug. 84 sxs Class H cement from 1,300' to 1,800'. Perforate 2-7/8" tubing @ 1,800'-802' MD Packer at 1815ft				
	Bridge Plug at 1910ft	Spot 100' balanced cement plug across perforations. 21 sxs Class H cement				
	Bridge Plug at 1955ft	Perforation-1926ft-1934ft Perforation-1937ft-1947ft Perforation-1964ft-1972ft				
Mud Logging Each 10ft from 60ft		Float Collar at 2173ft Shoe at 2250ft 200ft HI-Vis Pill				
Haliburton density,neutron,resistivity,sonic side wall cores						
	10.4ppg					
	5 1/2"-17ppft-R111-J55-LTC		8 3/4"	4520ft	WBM 10.4	11.5