

**BUREAU OF SURFACE AND  
MINERAL RESOURCES**

300 North 6<sup>th</sup> Street Suite 103  
PO Box 83720  
Boise ID 83720-0050  
Phone (208) 334-0200  
Fax (208) 334-3698



GEORGE B. BACON, DIRECTOR  
EQUAL OPPORTUNITY EMPLOYER

**STATE BOARD OF LAND COMMISSIONERS**

*C. L. "Butch" Otter, Governor  
Ben Ysursa, Secretary of State  
Lawrence G. Wasden, Attorney General  
Donna M. Jones, State Controller  
Tom Luna, Sup't of Public Instruction*

October 27, 2010

Jodie West  
Bridge Energy, Inc.  
1580 Lincoln Street, Suite 1110  
Denver, Colorado 80203

SUBJECT: Permit to Drill LU600044 (API#11-075-20-019, DJS Properties #1-14)

The Idaho Department of Lands has completed our review of this permit to drill for oil and gas. Enclosed is a copy of the approved permit. This permit was approved with the following stipulations:

1. The permittee shall be required to submit an affidavit covering the initial BOP pressure test after installation signed by the operator or contractor attesting to the satisfactory pressure test.
2. The permittee shall ensure mud pits are adequately sized, designed and constructed for the reception and confinement of mud and cuttings and to prevent contamination of streams and potable water.
3. Drilled holes cannot be used for any other purposes unless they are constructed according to the applicable well construction standards administered by the Idaho Department of Water Resources.
4. Multiple zone completion has not been requested, and must be applied for separately, as required by IDAPA 20.07.02.220.
5. If a full length seal is not used to decommission a well, decommissioning must include sealing all uncased sections of the well bore and perforating and pressure grouting all casing not sealed during well construction.
6. No secondary recovery efforts have been applied for, and Class II injection wells for injecting brines and other fluids to aid oil and gas production may not be permitted.
7. Non-productive wells must be decommissioned prior to drilling the next hole.
8. Temperature readings must be periodically taken to insure that the correct cement is used. Temperature readings must be logged and submitted with other well information after hole completion.
9. Applicant will obtain necessary water rights from Idaho Department of Water Resources if nearby wells will be used to supply water for the drilling operations.

Please ensure that all operations are conducted in accordance with the requirements of IDAPA 20.07.02 (Rules Governing Conservation Of Crude Oil And Natural Gas In The State Of Idaho).

This permit will be administered by Nancy Welbaum in our Southwest Supervisory Area. She will be inspecting the drilling operation, and may be accompanied by our contractor assisting with inspections. Please contact her at 208-334-3488 if you have any questions.

Sincerely,



Eric Wilson  
Navigable Waters/Minerals Program Manager

---

cc: Nancy Welbaum  
Chad Hersley, IDWR, PO Box 83720, Boise, Idaho 83720-0098  
Ryan V. Morgan, Centra Consulting, 413 W. Idaho Street, Suite 302, Boise, Idaho 83702



IDAHO OIL AND GAS CONSERVATION COMMISSION

Application For Permit to Drill, Deepen or Plug Back

APPLICATION TO: Drill [X] Deepen [ ] Plug Back [ ]

NAME OF COMPANY OR OPERATOR: Bridge Energy, Inc. Date: 10/5/2010

Address: 1580 Lincoln Street, Suite 1110

City: Denver State: CO Zip Code: 80203 Telephone: (303)831-9022

Distance, in miles, and direction from nearest town or post office: Approximately 5 miles NNE of New Plymouth, ID

DESCRIPTION OF WELL AND LEASE

Name of Lease: DJS Properties Well Number: #1-14 Elevation (ground) 2589.43 ft

Well Location: Section: 14 Township: 8N Range: 4W (or block and survey)

(give footage from section lines): 1782' FSL 1663' FWL (NE 1/4 SW 1/4)

Field and Reservoir (if wildcat, so state): Willow County: Payette

Nearest distance from proposed location to property or lease line: 1663 feet

Distance from proposed location to nearest drilling, completed or applied for on the same lease: N/A feet

Proposed depth: 6000 ft Rotary or cable tools: Rotary

Approx date work will start: November, 2010 Number of acres in lease: 640

Number of wells on lease, including this well, completed in or drilling to this reservoir: 1

If lease purchased with one or more wells drilled, complete the following information:

Purchased from (name) N/A

Address of above N/A

Status of bond N/A

Remarks: (If this is an application to deepen or plug back, briefly describe work to be done, giving present producing zone and expected new producing zone) Survey plats and drilling prognosis are attached.

Please direct any inquiries to Jodie West (Bridge Energy, Inc.) at 1-303-831-9022.

CERTIFICATE: I, the undersigned, state that I am the Consultant of Bridge Energy, Inc. (company) and that I am authorized by said company to make this application and that this application was prepared under my supervision and direction and that the facts stated herein are true, correct and complete to the best of my knowledge.

Date: 10/6/10 Signature: Ryan Z. [Signature]

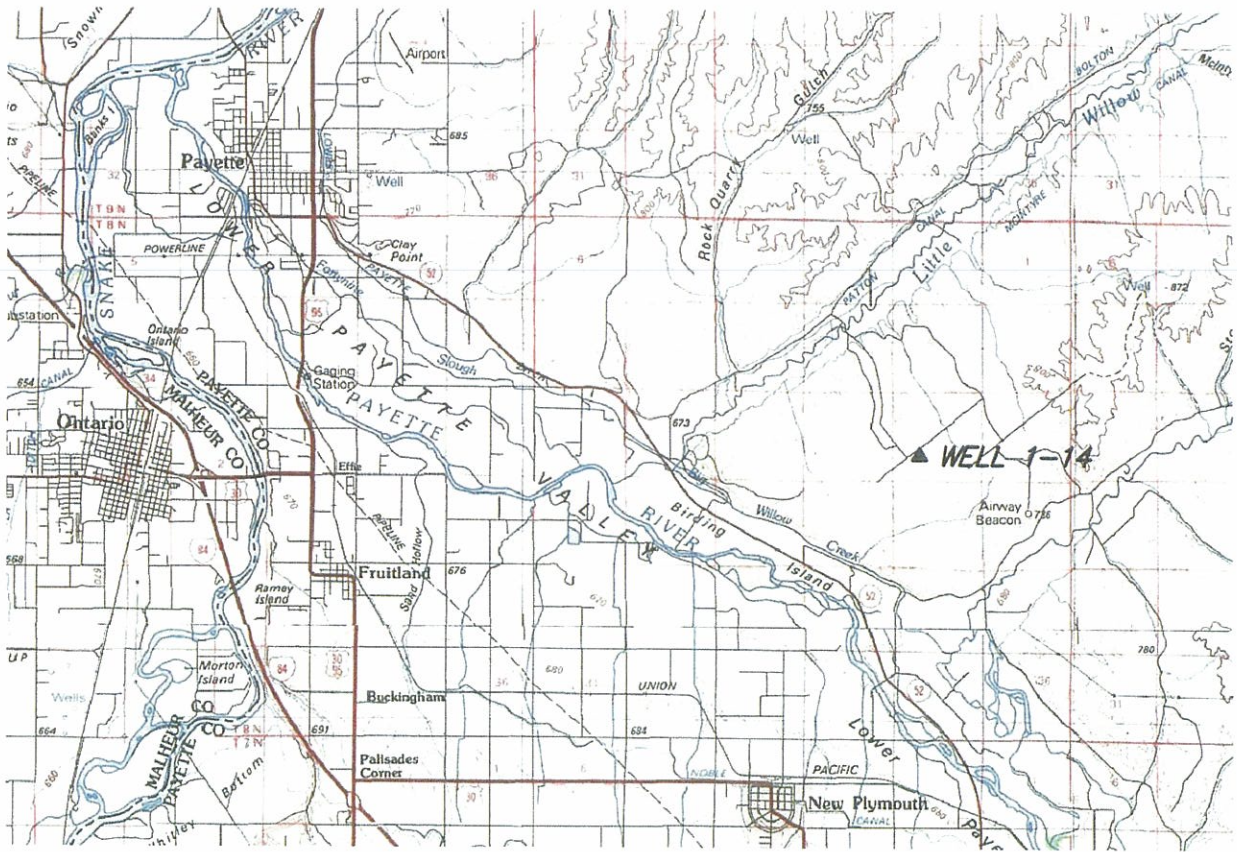
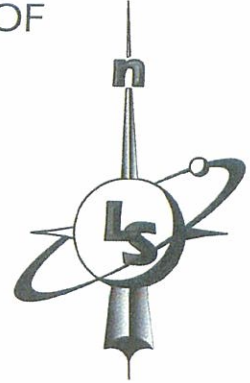
Permit Number: L4600044 Approval Date: 10-25-10 Approved by: [Signature]

API #1107520019

NOTICE: Before sending in this form, be sure that you have given all information requested. See instructions on back.

# DJS PROPERTIES - WELL 1-14 - VICINITY MAP

LOCATED IN THE NE 1/4 OF THE SW 1/4 OF  
SECTION 14, T8N, R4W, BM,  
PAYETTE COUNTY, IDAHO



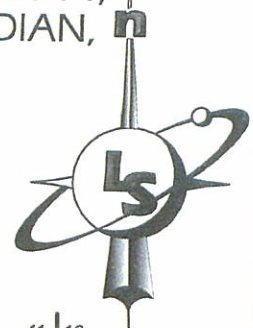
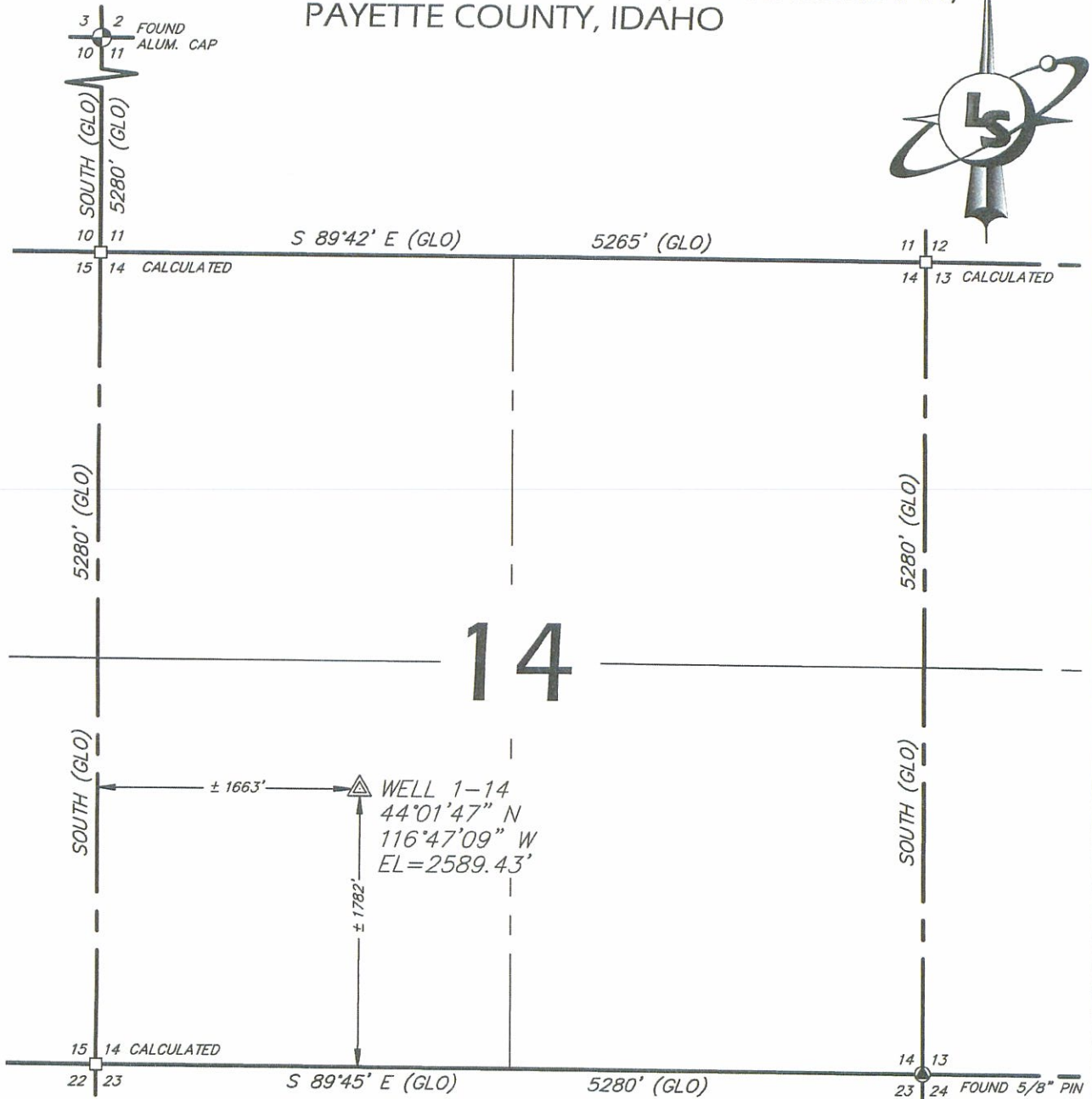
SCALE: 1"=2 MILES

**LandSolutions**  
Land Surveying and Consulting

231 E. 5TH ST., STE. A  
MERIDIAN, ID 83642  
(208) 288-2040 (208) 288-2557 fax  
[www.landsolutions.biz](http://www.landsolutions.biz)

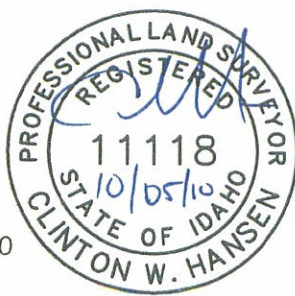
# DJS PROPERTIES - WELL 1-14 - SECTION EXHIBIT

LOCATED IN THE NE 1/4 OF THE SW 1/4 OF SECTION 14,  
TOWNSHIP 8 NORTH, RANGE 4 WEST, BOISE MERIDIAN,  
PAYETTE COUNTY, IDAHO

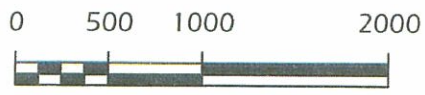


# 14

NOTE:  
THE SECTION LINE INFORMATION SHOWN IS BASED UPON THE FOUND MONUMENTS AS INDICATED AND CALCULATED POSITIONS BASED UPON THE ORIGINAL GLO PLAT. THE CALCULATED POSITIONS SHOWN DO NOT CONSTITUTE, NOR ARE THEY INTENDED TO BE, A RE-PROPORTIONED POSITION OF THE SECTION CORNERS THAT COULD NOT BE LOCATED. THIS EXHIBIT IS FOR GENERAL DESCRIPTION AND LOCATION ONLY.



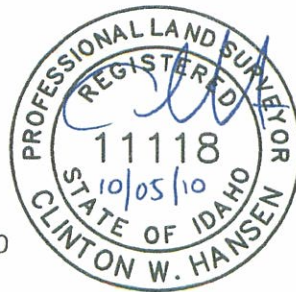
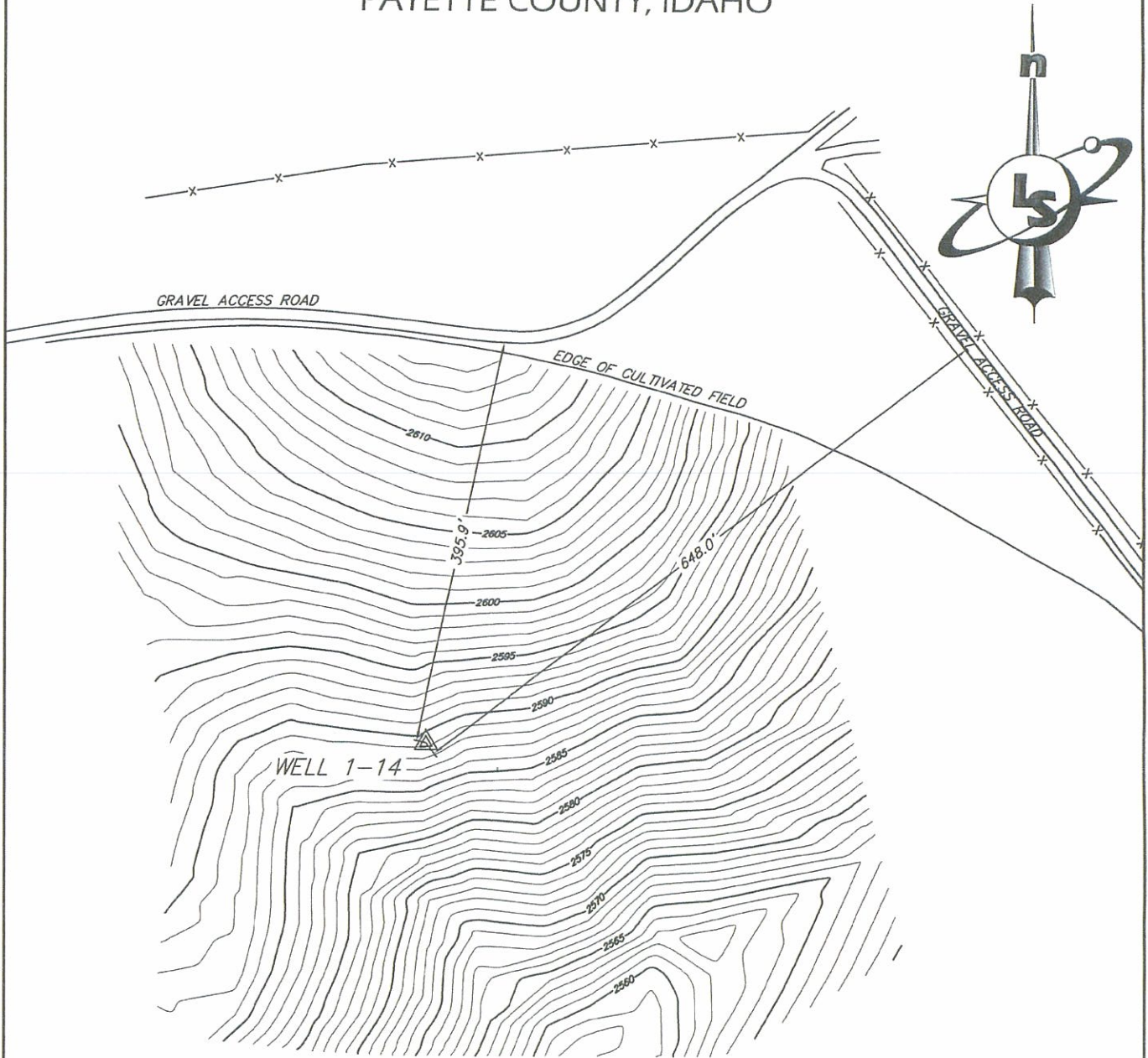
**LandSolutions**  
Land Surveying and Consulting



231 E. 5TH ST., STE. A  
MERIDIAN, ID 83642  
(208) 288-2040 (208) 288-2557 fax  
www.landsolutions.biz

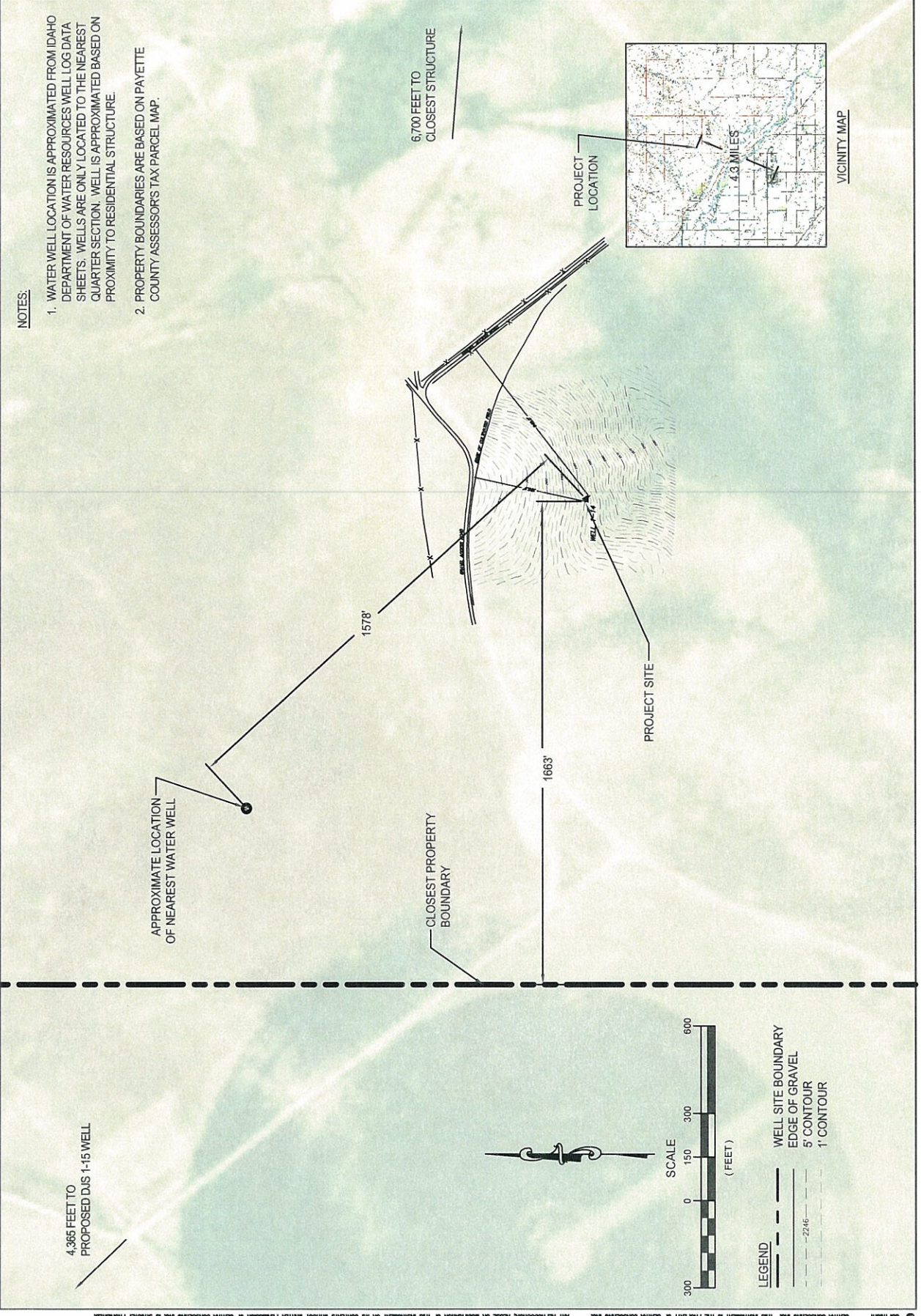
# DJS PROPERTIES - WELL 1-14 - TOPOGRAPHY EXHIBIT

LOCATED IN THE NE 1/4 OF THE SW 1/4 OF SECTION 14,  
TOWNSHIP 8 NORTH, RANGE 4 WEST, BOISE MERIDIAN,  
PAYETTE COUNTY, IDAHO

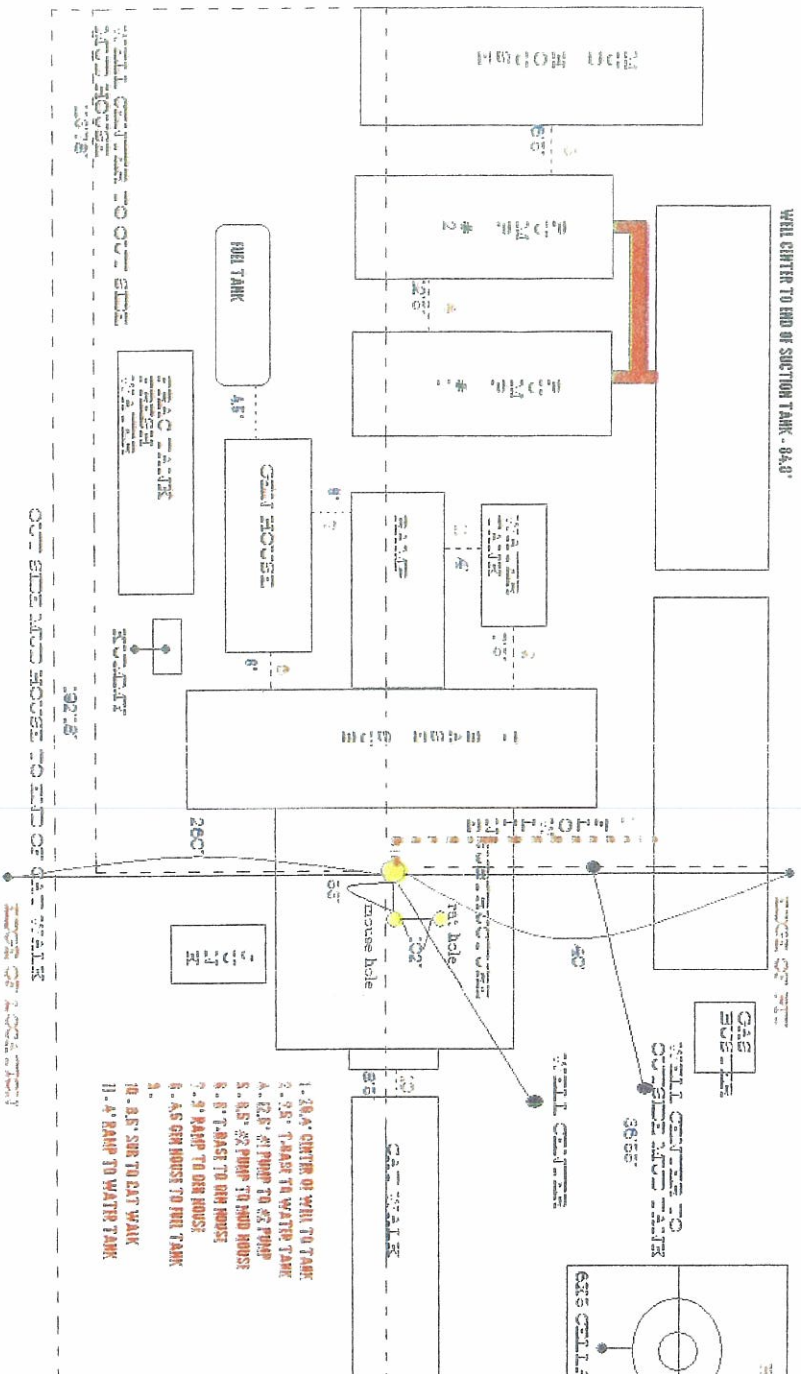


**LandSolutions**  
Land Surveying and Consulting

231 E. 5TH ST., STE. A  
MERIDIAN, ID 83642  
(208) 288-2040 (208) 288-2557 fax  
[www.landsolutions.biz](http://www.landsolutions.biz)



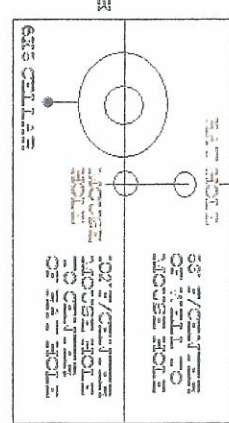
- NOTES:
1. WATER WELL LOCATION IS APPROXIMATED FROM IDAHO DEPARTMENT OF WATER RESOURCES WELL LOG DATA SHEETS. WELLS ARE ONLY LOCATED TO THE NEAREST QUARTER SECTION. WELL IS APPROXIMATED BASED ON PROXIMITY TO RESIDENTIAL STRUCTURE.
  2. PROPERTY BOUNDARIES ARE BASED ON PAYETTE COUNTY ASSESSOR'S TAX/PARCEL MAP.



1. 84.8' CENTER OF WELL TO TANK
2. 9.8' T-RAMP TO WATER TANK
4. 8.1' #1 PUMP TO #2 PUMP
5. 8.8' #2 PUMP TO HOSE HOUSE
8. 8' T-BASE TO DR HOUSE
9. 9' RAMP TO DR HOUSE
6. 4.5' GEN HOUSE TO FUEL TANK
7. 1.0' GEN HOUSE TO CAT WALK
11. 4' RAMP TO WATER TANK

SKID MEASUREMENTS

|              |                 |
|--------------|-----------------|
| CAT WALK     | 48"W / 147.3"L  |
| FUEL TANK    | 8.3"W / 30"     |
| GAS BUSTER   | 8"W / 8'L       |
| GEN HOUSE    | 8.3"W / 41.7"L  |
| JUNK BOX     | 8"W / 20.9"L    |
| SUCTION TANK | 8.3"W / 48.2"L  |
| SHAKER TANK  | 8.3"W / 48.8"L  |
| #1 PUMP      | 8.4"W / 32.6"L  |
| #2 PUMP      | 8.4"W / 32.6"L  |
| RAMP         | 11.4"W / 44.4"L |
| SUBSTRUCTURE | 27"W / 19.1"L   |
| T-BASE       | 8"W / 48.4"L    |
| WATER TANK   | 8"W / 35.1"L    |
| MUD HOUSE    | 10.2"W / 37.6"L |



84.8' CENTER OF WELL TO TANK

WELL CENTER TO OUTSIDE HOSE TO END OF SUCTION TANK

WELL CENTER TO END OF CAT WALK

OUTSIDE HOSE TO END OF CAT WALK

WELL CENTER TO END OF SUCTION TANK - 84.8'



WHS, LLC  
Razorback Rig Component Listing

The following list contains the components of the 2004 Cameron C-900 Hp, Trailer Mounted Drilling Rig w/ VIN Number (5024). This rig also operates w/ a FDS 150 Ton HMI hydraulic Top Drive.

| Qty | Item   | Remarks |
|-----|--|---------|
| 1   | Drawworks - Cameron 42"x 12" Water Circulating Drum w/ water cooled main brake and Wichita water cooled assist brake...Wichita Drum Clutch   |         |
| 1   | Power and Drive Package – Twin (2) Detroit Series 60 engines; 450 Hp each w/ Allison 5960 Transmissions into a Cushman 1000 Hp gear driven Compound, to Cushman 1000 Hp RA box; 1:1 Ratio            |         |
| 1   | Mast – PEMCO 120' x 400K lbs hook load; 1.25 API rating; sheaved for 10- 1- 1/8" drill lines; Serial # 1312  |         |
| 2   | Hydraulic Scoping Cylinder f/ PEMCO derrick  | Spare   |
| 1   | Fluid Design Services (FDS) 150 Ton Hydraulic Top Drive w/ diesel power package.   |         |
| 1   | Hydraulic Motor FDS 150 Ton Top Drive  | Spare   |
| 1   | Block-200 Ton ABCO, 10 line 5 x 36" sheave w/ ABCO Hook  |         |
| 1   | Weight Indicator-Totco type 4  |         |
| 1   | Sub Structure-17'H x 10'W x 16'L w/6' foldout wings. Unit scopes down to 10'6"H x 13'6" on lowboy.   |         |
| 1   | 40' Kelly; Hex   |         |
| 1   | Kelly Bushing  |         |
| 1   | Kelly Shuck w/ protector   |         |
| 1   | Sub-structure/T-base-45' x 8'  |         |
| 1   | Sub-structure ramp-48'4" x 10', hydraulic raise-cylinders part # SD83CC-24-131   |         |
| 1   | Top Dog House-24'10" x 7'10.5", hydraulic raise, with knowledge box, lockers, shelving, and bench seats. Framework installed for Pason Electronic Drilling Recorder and Autodriller computer system. |         |
| 1   | Kelly Spinner-Cam-tech model 6100 hydraulic Kelly spinner assy.  |         |
|     | Well Control Equipment-Shaffer LXT DBL 11" x 5K psi MAWP, Dual Ram, hydraulic BOP mfg. Date 11-04, Serial # 200213110-81<br>Shaffer LTX 11" x 5K psi MAWP spherical annular BOP                      |         |

WHS, LLC  
Razorback Rig Component Listing

| Qty | Item   | Remarks |
|-----|--|---------|
| 1   | 4-1/16" x 5000 psi BOP valve   |         |
|     | Choke Manifold, fitted for HCR valve, choke-w/4outlets, 5000 psi   |         |
| 1   | Closing Unit-Massco Inc. 5 station   |         |
| 2   | Generators-DDC 410 KW generators, 277/480 VAC 3 Phase 60 HZ powered by 2 Detroit Series 60 14.0 L Diesel engines/Tier III Emissions standards. Skid mounted in covered house with all electronic panels as 1 unit.   |         |
| 1   | Generator House-44' x 10' skid mounted   |         |
| 1   | Swivel-EMSCO LB 200 Ton Serial # 208   |         |
| 1   | Mud System-2-tank system w/approx. 700 bbls capacity. 60 HP mud mixers, 4 agitators, 4 jet blowers, 70 bbls slugging tank, 2-Doublelife AWD III Linear shale shakers built in tandem, 600 GPM each. Mud Conditioner unit consisting of; 1- Doublelife AWD III shale shaker, 1-Doublelife Mod. I-210 Desander, and 1- Doublelife V-510, 10 cone Desilter. |         |
| 2   | Mud Pumps-2 HHF-1000 HP triplex pumps w/pulsation dampners, powered by CAT 3412 1150 HP diesel engines, fully unitized. With 6" liners, 10" stroke, pumps will move 3.7 gal/stroke at 100% efficiency. Additional specifications upon request.   |         |
| 3   | American Roller Bearings for CE-F1000 mud pump   | Spare   |
| 2   | SKF Pillar Block bearings for CE-F1000   | Spare   |
| 1   | Mud/Gas Separator: 30'H x 6' Dia vessel mounted on skid for easy rig up and tear down.   |         |
| 1   | Fresh Water Tank-200 bbl fresh water tank w/electronic 20 HP 480V frame 256T 3 x 2 centrifugal 4 x 6 water pump powered by Detroit 353 (2800 rpm)  |         |
| 1   | Catwalk-47'3" x 10'2" pipe racks   |         |
| 1   | Junk Box-20'9" x 7'10"   |         |
| 1   | Rotary Table-22" IDECO rotary table assy. On 44" centers complete w/split master bushing.  |         |
| 1   | Drill Collar Slips-Type A 5-1/2 MS 98C   |         |
| 1   | Drill Pipe Slips-Wooly M3-98   |         |
| 1   | Drill Collar Clamp(Wedding Band)<br>AOT 12116<br>5 1/2-6 5/8   |         |

WHS, LLC  
Razorback Rig Component Listing

| Qty | Item  | Remarks |
|-----|---|---------|
|     | Serial # 29140  |         |
| 1   | Casing Elevators<br>M66-5 ½<br>250 ton 227 MT   |         |
|     | Drill Pipe Elevators-2-AOT(1) 150 ton(1) 250 ton  |         |
|     | Cross Over Subs-Assorted  |         |
| 1   | Survey Machine-Wireline survey machine.   |         |
| 1   | Diesel Tank-8000 gal Cylindrical Tank: Myers diesel tank transfer pump assy.<br>w/3hp 3600rpm explosion proof motor. Skid mounted with 3 compartments for<br>oils on front of skid. |         |
|     |   |         |

*This rig moves in 27 loads (including pipe). All components are skid mounted and mud-boated with lifting ears to be lifted onto oilfield floats or lowboys. All loads are legal permit loads.*

# BRIDGE RESOURCES

## WILLOW PROSPECT WELLBORE DATA SHEET

LEASE: DJS Properties  
 WELL: 1-14  
 LOCATION: Sec. 14, T8N-R4W

TOTAL DEPTH: 6000ft  
 SURFACE LOCATION: 1663' FWL, 1782'FSL (NE/4SW/4)

SPUD DATE: November 2010  
 OBJECTIVE: Willow Sands

BOTTOM HOLE LOCATION:

ELEVATION: 2589'  
 ELEVATION(KB): 2607'

| FORMATION EVALUATION   | CASING SIZE (IN)             | COMMENTS                              | HOLE SIZE (IN) | TVD    | MUD WEIGHT (ppg) | FRACTURE GRADIENT (ppg) |
|--|------------------------------|---------------------------------------|----------------|--------|------------------|-------------------------|
|  | 12" line pipe                | No FIT                                | 20"            | 60ft   | 8.4              | 8.4                     |
|  |                              | Top of cmt-300ft up inside 8 5/8" Csg |                |        |                  |                         |
| 8-5/8" casing-24ppft-J55-R111-BTC                                  |                              | FIT                                   | 10 5/8"        | 600+ft | SBM<br>8.4       | 8.4                     |
| Mud Logging<br>Each 10ft from 60ft                                 |                              |                                       |                |        |                  |                         |
| Haliburton<br>density,neutron,resistivity,sonic<br>side wall cores |                              |                                       |                |        |                  |                         |
|  | 4 1/2"-11.6ppft-R111-K55-LTC |                                       | 7 5/8"         | 6000ft | SBM<br>9.5ppg    | 11.5                    |

**DRILLING PROGNOSIS**  
**BRIDGE ENERGY, INC**  
**DJS Properties 1-14 (Willow Development)**  
**NE/4SW/4 of Section 14-Township 8N-Range 4W**  
 Payette County, Idaho

October, 2010

**GENERAL**

**NOTE:** This well is to be drilled as a tight hole. Unauthorized personnel are not to be allowed on the rig floor, and all information is to be kept confidential.

Surface Location: 1782' FSL and 1663' FWL (NESW), Section 14-T8N-R4W

Bottomhole Location: Same

Proposed TD/Objective: 6000' /Willow Sands

Elevation: 2589' GL (ungraded); 2607' KB (estimated).

Drilling Rig: Story Drilling-Razorback

**MECHANICAL**

Casing Design:

| <u>SIZE</u> | <u>INTERVAL</u> | <u>LENGTH</u> | <u>DESCRIPTION</u>      | <u>Collapse</u> | <u>Int Yd</u> | <u>Body Yd</u><br>(x1000lb) |
|-------------|-----------------|---------------|-------------------------|-----------------|---------------|-----------------------------|
| 12"         | 0' - 60'        | 60'           | Conductor 12" Line pipe |                 |               |                             |
| 8 5/8"      | 0' - 600+       | 600+          | 24#, J-55, R111, BTC    | 1,370           | 2,950         | 391                         |
| 4 1/2"      | 0' - 6000'      | 6000'         | 11.6#, K55, R111, LTC   | 4,960           | 5,350         | 180                         |
| 2-7/8"      | 0' - 6000'      | 6000'         | 6.5#, J-55, EUE         | 7,680           | 7,260         | 72.6                        |

**NOTE:-** Clean and drift all strings of casing prior to running. Remove all thread sealant (Kindex) prior to running. Unload production casing and tubing strings with a forklift.

**CEMENT**

**CASING/HOLE SIZE**

**CEMENT SLURRY**

**12" - 20"**

Cement to surface with 3 yds Redi-mix.

**8 5/8" - 10 5/8"**

**T.D. 600+ ft**

Hole Size 10 5/8 in

Casing Size 8 5/8 in

Cement Coverage 600+ ft to surface

Cement Excess 15 %

**Premium G Cmt 160 sks 15.8 #/gal 1.15 cuft/sk 5.0 gal/sk**

Premium Class G Cmt 100 % (BWOC)

Calcium Chloride 2 % (BWOC)

Flocele 1/4 #/sk

**NOTE:** . Have 100 sx neat cement and one-inch tubing on location for top job if required.

**CASING/HOLE SIZE**

**CEMENT SLURRY**

**4 1/2" – 7 5/8"**

**T.D. 6000 ft**

Hole Size 7 5/8 in  
Casing Size 4 1/2 in  
Tail Cmt Coverage 6000 ft to 2000 ft  
Tail Cmt Excess 25 %  
Lead Cmt Coverage 2000 ft to 300 ft  
Lead Cmt Excess 25 %  
BHST 250 + Deg. F

**730 sks Prem. G w/ 35% Silica Flour 15.5 #/gal 1.56 cuft/sk 6.6 gal/sk**

Premium G Cmt 100 % (BWOC)  
Silica Flour 35 % (BWOC)  
CDI 33 .5 % (BWOC)  
Flocele 1/4 #/sk

**265 sks Prem. Lite Cmt 12.7 #/gal 1.84 cuft/sk 9.9 Gal/sk**

Class G Cmt 65 % (BWOC)  
Poz 35 % (BWOP)  
Gel 6 % (BWOC)  
Salt 3 % (BWOW)  
Flocele 1/4#/sk

**CEMENTING ACCESSORIES**

- Surface Casing:
- 1) Guide shoe with insert float located one joint above shoe.
  - 2) Top wiper plug (rubber).
  - 3) Centralizer with stop ring in middle of shoe joint.
  - 4) Centralizers over collars on first three connections, omitting float collar.
  - 5) Use a total of five centralizers.
- Production Casing:
- 1) Differential-fill float collar located one joint above differential-fill float shoe.
  - 2) Top and bottom wiper plug.
  - 3) Centralizer with stop-ring in the middle of shoe joint.
  - 4) Centralize through and 100' on either side of potentially productive intervals. Centralizer program to be determined after logging
  - 5) Thread-lock all connections through float collar and use API casing dope on all remaining connections.
  - 6) Stage cementing tool may be run to ensure placement of cement across any productive intervals and fresh water sands.
  - 7) Centralize above and below stage cementing tool (if run).

**WELLHEAD**

- Casing Head: 8-5/8" x 11" x 3,000 psi WP flanged casing head with two-2" LP outlets. Outlets equipped with one-2" 3,000 psi WP ball valve, and one-2" x 3,000 psi WP bull plug on the outlets.
- Tubing Head: 11" x 7-1/16" x 3,000 psi WP tubing head with two-2" LP threaded outlets. Outlets to be equipped with 2" x 3,000 psi WP ball valves.
- Upper Half: To be determined.

**MUD PROGRAM**

| <u>INTERVAL</u> | <u>WEIGHT (PPG)</u> | <u>VISCOSITY (SEC)</u> | <u>WL (CCS)</u> |
|-----------------|---------------------|------------------------|-----------------|
| 60' – 600+'     | 8.5 - 9.0 ppg       | 30 - 45 sec            | NC              |

Surface hole will be drilled with SBM. Ensure all water sources are turned off at pits. Water from conductor will be displaced to D tank. Keep hole full and drill pipe moving at all times. Sweep hole with Super Sweep to insure the hole is clean prior to running surface casing.

| <u>INTERVAL</u> | <u>WEIGHT (PPG)</u> | <u>VISCOSITY (SEC)</u> | <u>WL (CCS)</u> |
|-----------------|---------------------|------------------------|-----------------|
| 600+' – 6000'   | 8.5 - 9.8 ppg       | 28 - 60 sec            | 10 ccs or less  |

Reference SBM program for specific maintenance, product concentrations, and mud treatment. Keep hole full at all times. Monitor pit volume constantly as lost circulation and water flows should be expected at all times. Sweep hole as dictated by hole conditions. Ensure all MSD sheets are kept at wellsite.

Deviation tendencies in this area should not be severe; however, prudent drilling practices should be adhered to at all times. Surveys should be run at  $\pm 500$  ft intervals, unless otherwise indicated.

**WELL CONTROL EQUIPMENT**

| <u>INTERVAL</u> | <u>EQUIPMENT</u>  |
|-----------------|---|
| 0' – 600+'      | None  |
| 600+' – 6000'   | 11" x 3,000 psi WP double-gate BOP with blind and 4-1/2" pipe rams. Rig should be equipped with upper and lower kelly cocks, as well as stabbing valve (have wrench available at all times). BOP equipment will be tested after nipple-up and every 30 days thereafter by an Independent Certified BOP Tester (Produced signed copys of BOP test charts to Idaho State representative) Close pipe rams daily and blind rams on trips, recording results on tour sheets. BOP Function Test |

**GEOLOGICAL**

Geologist/Mud Logger: Geologist and mud logger with hotwire and chromatograph to be on location from base of conductor casing to TD. Notify prior to spud and after setting surface casing.

Electric Logging: Quad Combo (DIL-BHC Sonic-Density-Neutron to be run from base of surface casing to TD. In addition the GR should be run up through surface casing to surface. Percussion sidewall cores may be taken at the geologist's discretion.

**GEOLOGICAL (Continued)**

Formation Tops: Assumes KB elevation of 2607'

| <u>FORMATION</u>  | <u>DRILL DEPTH</u> | <u>SUB SEA</u> |
|-------------------|--------------------|----------------|
| Idaho Group Sands | Surface            | + 2607'        |
| Pro Delta Shale   | 560'               | + 2047'        |
| Willow Sands      | 3990'              | - 1383'        |
| Total Depth       | 6000'              | - 3393'        |

**MISCELLANEOUS**

1. Pump super sweep prior to running casings and prior to drilling out shoe. Pump efficiencies will be calculated from this information plus hole gauge
2. Monitor mud hydraulics closely. An in-gauge hole is extremely critical to achieve open-hole packer seats, interpretable logs, and a good cement bond.
3. Water will be hauled or pumped from nearby sources.
4. The area immediately around rig will be lined.
5. At all times, enough weight material will be carried on board to increase the existing drilling fluid by 1ppg
6. It is anticipated that a PDC bit will be used from approximately 600' to TD.
7. In general, the above prognosis is presented as a guideline only; and is subject to change as dictated by hole conditions and geological interpretation.

**PERSONNEL**

Ron Richards, Drilling Manager  
Ed Davies, President

**OFFICE NUMBER**

303-831-9022  
303-831-9022

**CELL NUMBER**

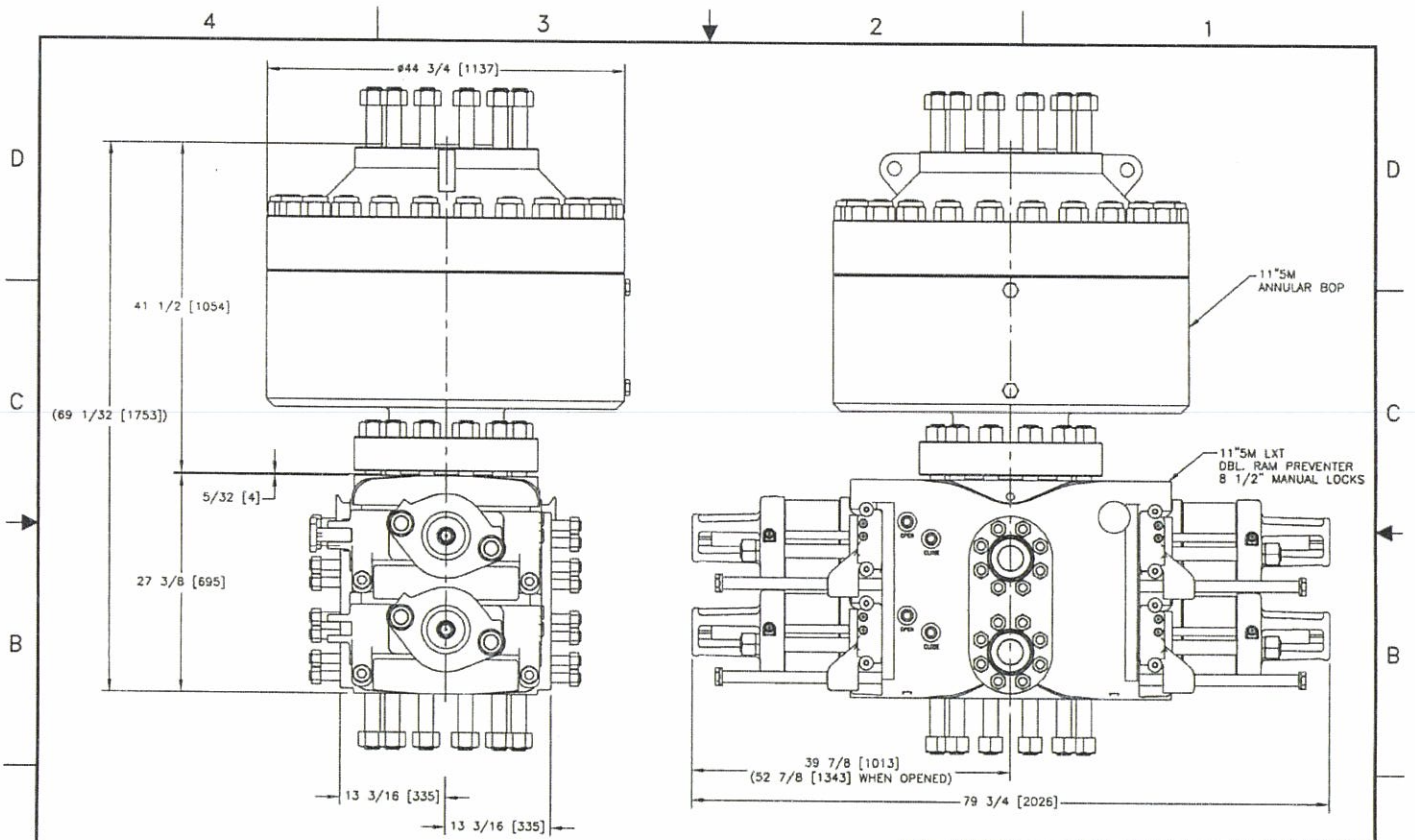
720-209-0207  
720-641-8737

Prepared by:

---

Ron Richards for Bridge Energy Inc.





NOTES:  
 TOTAL APPROX. WT. AS SHOWN WITH RAMS AND ELEMENT = 16,780 LBS. [7,611 KG.]

NO MANUAL CHANGES  
 FILE: SK6659 09/07/04

| Rev. No. | ECR/Rev | Revision Description | By | App'd Date |
|----------|---------|----------------------|----|------------|
| 01       |         |                      |    |            |
| 02       |         |                      |    |            |
| 03       |         |                      |    |            |
| 04       |         |                      |    |            |
| 05       |         |                      |    |            |
| 06       |         |                      |    |            |
| 07       |         |                      |    |            |
| 08       |         |                      |    |            |
| 09       |         |                      |    |            |
| 10       |         |                      |    |            |
| 11       |         |                      |    |            |
| 12       |         |                      |    |            |
| 13       |         |                      |    |            |
| 14       |         |                      |    |            |
| 15       |         |                      |    |            |
| 16       |         |                      |    |            |
| 17       |         |                      |    |            |
| 18       |         |                      |    |            |
| 19       |         |                      |    |            |
| 20       |         |                      |    |            |
| 21       |         |                      |    |            |
| 22       |         |                      |    |            |
| 23       |         |                      |    |            |
| 24       |         |                      |    |            |
| 25       |         |                      |    |            |
| 26       |         |                      |    |            |
| 27       |         |                      |    |            |
| 28       |         |                      |    |            |
| 29       |         |                      |    |            |
| 30       |         |                      |    |            |
| 31       |         |                      |    |            |
| 32       |         |                      |    |            |
| 33       |         |                      |    |            |
| 34       |         |                      |    |            |
| 35       |         |                      |    |            |
| 36       |         |                      |    |            |
| 37       |         |                      |    |            |
| 38       |         |                      |    |            |
| 39       |         |                      |    |            |
| 40       |         |                      |    |            |
| 41       |         |                      |    |            |
| 42       |         |                      |    |            |
| 43       |         |                      |    |            |
| 44       |         |                      |    |            |
| 45       |         |                      |    |            |
| 46       |         |                      |    |            |
| 47       |         |                      |    |            |
| 48       |         |                      |    |            |
| 49       |         |                      |    |            |
| 50       |         |                      |    |            |
| 51       |         |                      |    |            |
| 52       |         |                      |    |            |
| 53       |         |                      |    |            |
| 54       |         |                      |    |            |
| 55       |         |                      |    |            |
| 56       |         |                      |    |            |
| 57       |         |                      |    |            |
| 58       |         |                      |    |            |
| 59       |         |                      |    |            |
| 60       |         |                      |    |            |
| 61       |         |                      |    |            |
| 62       |         |                      |    |            |
| 63       |         |                      |    |            |
| 64       |         |                      |    |            |
| 65       |         |                      |    |            |
| 66       |         |                      |    |            |
| 67       |         |                      |    |            |
| 68       |         |                      |    |            |
| 69       |         |                      |    |            |
| 70       |         |                      |    |            |
| 71       |         |                      |    |            |
| 72       |         |                      |    |            |
| 73       |         |                      |    |            |
| 74       |         |                      |    |            |
| 75       |         |                      |    |            |
| 76       |         |                      |    |            |
| 77       |         |                      |    |            |
| 78       |         |                      |    |            |
| 79       |         |                      |    |            |
| 80       |         |                      |    |            |
| 81       |         |                      |    |            |
| 82       |         |                      |    |            |
| 83       |         |                      |    |            |
| 84       |         |                      |    |            |
| 85       |         |                      |    |            |
| 86       |         |                      |    |            |
| 87       |         |                      |    |            |
| 88       |         |                      |    |            |
| 89       |         |                      |    |            |
| 90       |         |                      |    |            |
| 91       |         |                      |    |            |
| 92       |         |                      |    |            |
| 93       |         |                      |    |            |
| 94       |         |                      |    |            |
| 95       |         |                      |    |            |
| 96       |         |                      |    |            |
| 97       |         |                      |    |            |
| 98       |         |                      |    |            |
| 99       |         |                      |    |            |
| 100      |         |                      |    |            |

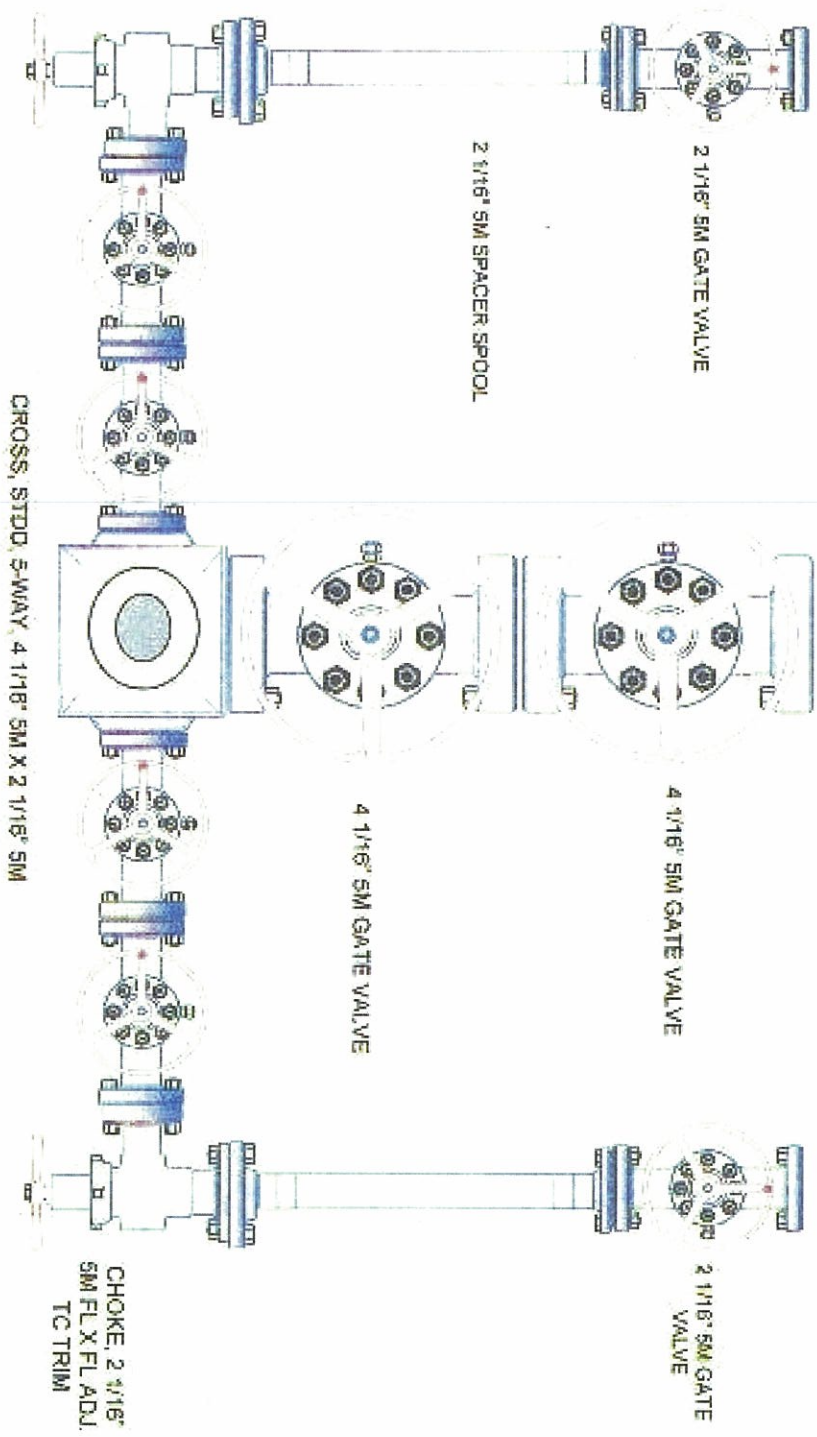
**Shaffer**

GENERAL ARRANGEMENT, STACK, 11-5M, LXT

C-SK-6659

Manifold spool 11" 5M x 11" 5M  
 1 outlet

# 4 1/16" 5M X 2 1/16" 5M CHOKE MANIFOLD



WHS, LLC  
BOP Schematic NU on Surface- Razorback Rig

RIG FLOOR

RIG FLOOR

