

**BUREAU OF SURFACE AND
MINERAL RESOURCES**

300 North 6th Street Suite 103
PO Box 83720
Boise ID 83720-0050
Phone (208) 334-0200
Fax (208) 334-3698



GEORGE B. BACON, DIRECTOR
EQUAL OPPORTUNITY EMPLOYER

STATE BOARD OF LAND COMMISSIONERS

*C. L. "Butch" Otter, Governor
Ben Ysursa, Secretary of State
Lawrence G. Wasden, Attorney General
Donna M. Jones, State Controller
Tom Luna, Sup't of Public Instruction*

September 22, 2010

Jodie West
Bridge Energy, Inc.
1580 Lincoln Street, Suite 1110
Denver, Colorado 80203

SUBJECT: Permit to Drill LU600036 (API#11-075-20-017, May #1-13)

The Idaho Department of Lands has completed our review of this permit to drill for oil and gas. Enclosed is a copy of the approved permit. This permit was approved with the following stipulations:

1. The permittee shall be required to submit an affidavit covering the initial BOP pressure test after installation signed by the operator or contractor attesting to the satisfactory pressure test.
2. The permittee shall ensure mud pits are adequately sized, designed and constructed for the reception and confinement of mud and cuttings and to prevent contamination of streams and potable water.
3. Drilled holes cannot be used for any other purposes unless they are constructed according to the applicable well construction standards administered by the Idaho Department of Water Resources.
4. Multiple zone completion has not been requested, and must be applied for separately, as required by IDAPA 20.07.02.220.
5. If a full length seal is not used to decommission a well, decommissioning must include sealing all uncased sections of the well bore and perforating and pressure grouting all casing not sealed during well construction.
6. If a full length annular seal will not be installed in the 5½ inch casing, then the following information, in addition to any that may be required by IDAPA 20.07.02.220, must be submitted to the Idaho Department of Lands prior to finishing the well:
 - a. Identification of which zones will be sealed off and which zones will remain open
 - b. Criteria used to determine which zones are sealed or left open
 - c. How the cementing plan will prevent commingling of aquifers that have different temperatures, pressures, and other qualities
7. No secondary recovery efforts have been applied for, and Class II injection wells for injecting brines and other fluids to aid oil and gas production may not be permitted.

8. Non-productive wells must be decommissioned prior to drilling the next hole.
9. Temperature readings must be periodically taken to insure that the correct cement is used. Temperature readings must be logged and submitted with other well information after hole completion.
10. Applicant will obtain necessary water rights from Idaho Department of Water Resources if nearby wells will be used to supply water for the drilling operations.

Please ensure that all operations are conducted in accordance with the requirements of IDAPA 20.07.02 (Rules Governing Conservation Of Crude Oil And Natural Gas In The State Of Idaho).

This permit will be administered by Nancy Welbaum in our Southwest Supervisory Area. She will be inspecting the drilling operation, and may be accompanied by our contractor assisting with inspections. Please contact her at 208-334-3488 if you have any questions.

Sincerely,



Eric Wilson
Navigable Waters/Minerals Program Manager

cc: Nancy Welbaum
Chad Hersley, IDWR, PO Box 83720, Boise, Idaho 83720-0098
Ryan V. Morgan, Centra Consulting, 413 W. Idaho Street, Suite 302, Boise, Idaho 83702



IDAHO OIL AND GAS CONSERVATION COMMISSION

Application For Permit to Drill, Deepen or Plug Back

APPLICATION TO: Drill [X] Deepen [] Plug Back []

NAME OF COMPANY OR OPERATOR: Bridge Energy, Inc. Date: 6/14/2010

Address: 1580 Lincoln Street, Suite 1110

City: Denver State: CO Zip Code: 80203 Telephone: (303)831-9022

Distance, in miles, and direction from nearest town or post office: Approximately 1.53 miles northeast of Fruitland, ID

DESCRIPTION OF WELL AND LEASE

Name of Lease: May Well Number: #1-13 Elevation (ground) 2170

Well Location: Section: 13 Township: 8N Range: 5W (or block and survey)

(give footage from section lines): 820' FNL 1461' FEL (NW 1/4 NE 1/4)

Field and Reservoir (if wildcat, so state): Wildcat County: Payette

Nearest distance from proposed location to property or lease line: 820 feet

Distance from proposed location to nearest drilling, completed or applied for on the same lease: n/a (13,547 different lease) feet

Proposed depth: 6,800 ft Rotary or cable tools: Rotary

Approx date work will start: September 15, 2010 Number of acres in lease: 535.57 acres

Number of wells on lease, including this well, completed in or drilling to this reservoir: n/a

If lease purchased with one or more wells drilled, complete the following information:

Purchased from (name)

Address of above

Status of bond

Remarks: (If this is an application to deepen or plug back, briefly describe work to be done, giving present producing zone and expected new producing zone) Survey plats and drilling prognosis are attached.

Fee Lease

CERTIFICATE: I, the undersigned, state that I am the Consultant

of Bridge Energy, Inc. (company) and that I am

authorized by said company to make this application and that this application was prepared under my supervision and direction and that the facts stated herein are true, correct and complete to the best of my knowledge.

Date: 9/15/10 Signature: Ryan [Signature]

Permit Number: LU600036 Approval Date: 9/21/10 Approved by: [Signature] API # 11-075-20-017

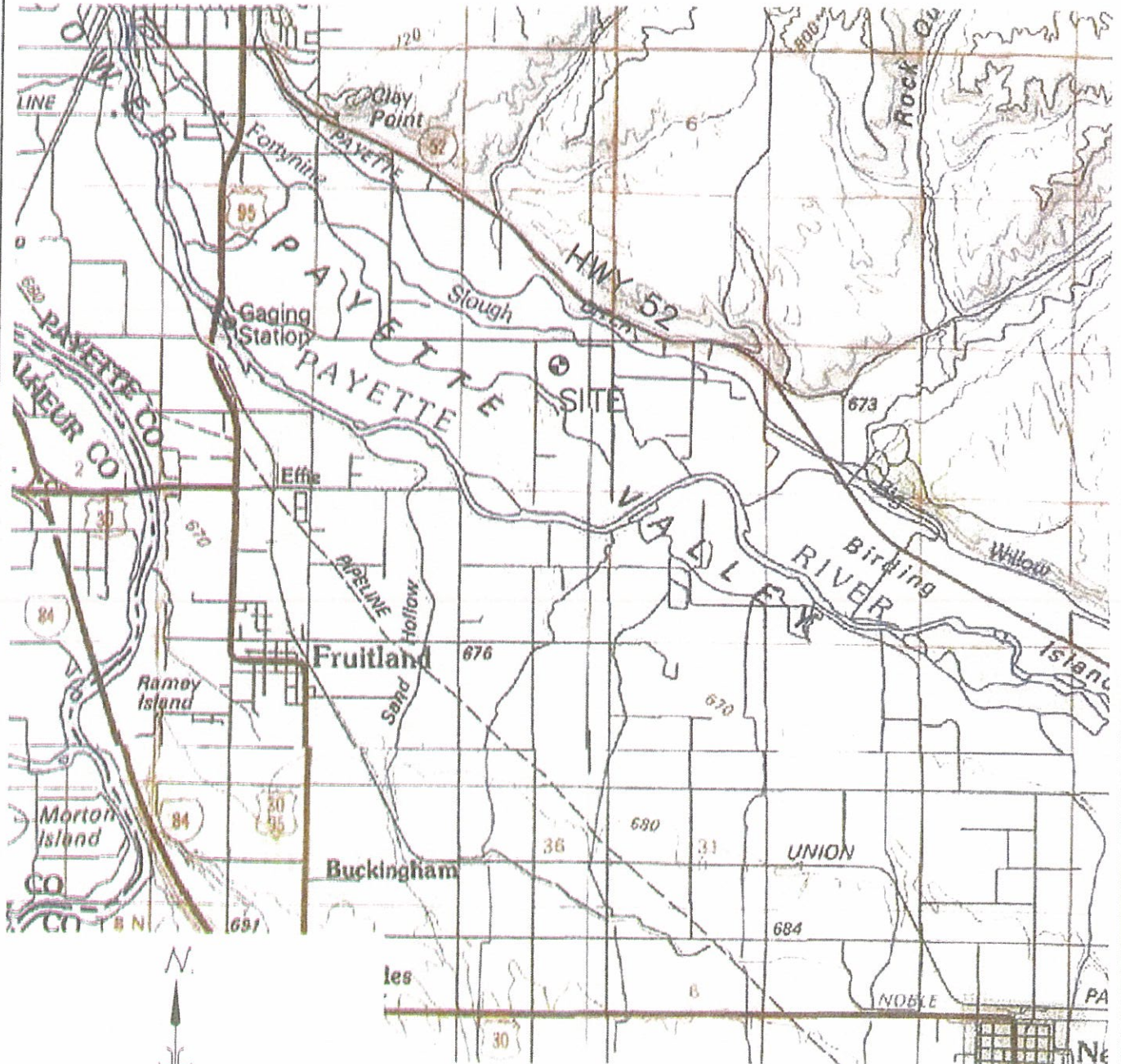
NOTICE: Before sending in this form, be sure that you have given all information requested. See instructions on back.

RECEIVED SEP 15 2010

SOUTHWESTERN IDAHO AREA DEPARTMENT OF LANDS

VICINITY MAP OF MAY 1-13 SITE

Lying in a Portion of the NW1/4 of the NE1/4 of
Section 13, Township 8 North, Range 5 West of the
Boise Meridian, Payette County, Idaho
2010



SCALE: 1" = 1 MILE

DATE: July 26, 2010

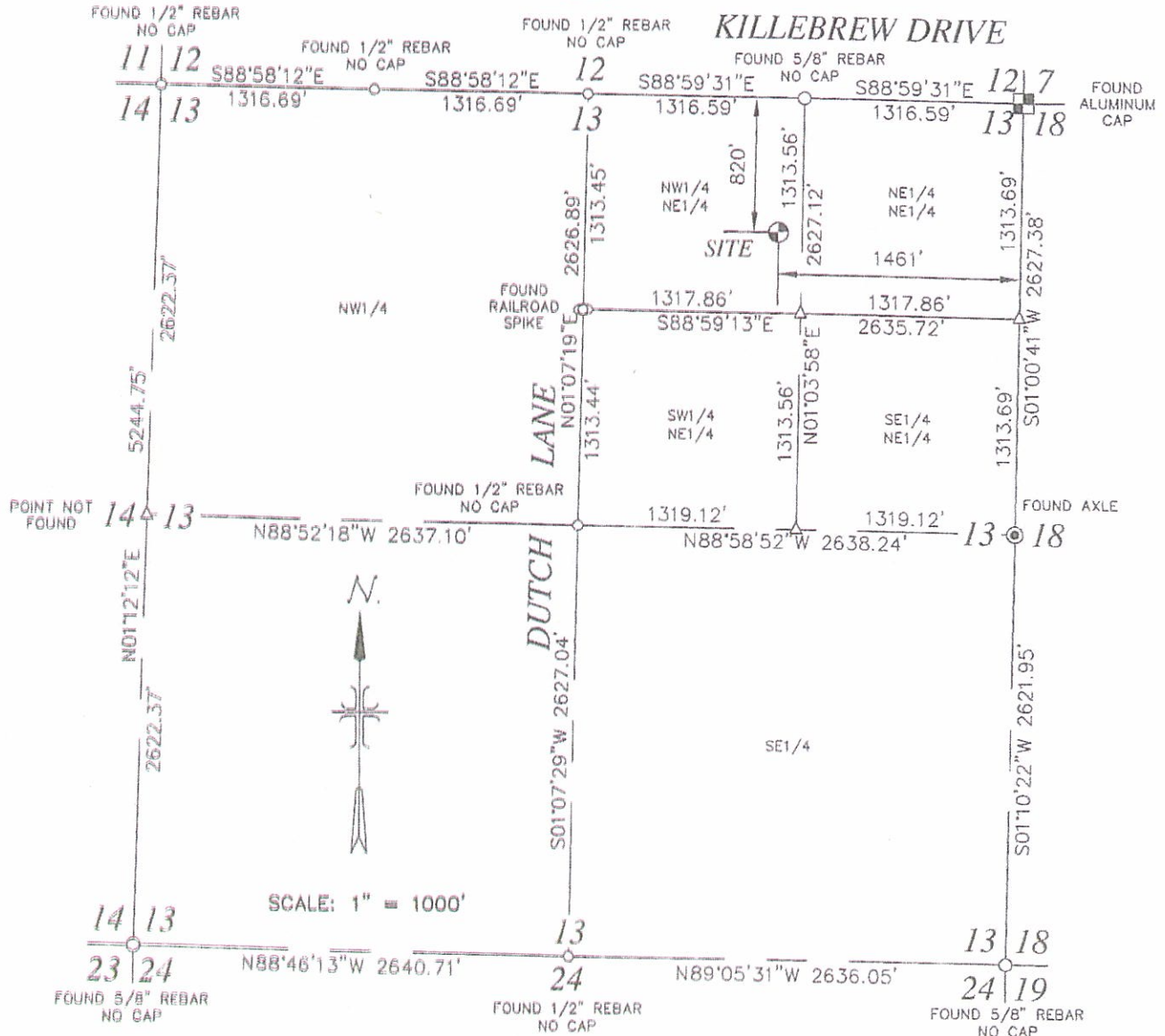
FILE: 0534-01-06 VICINITY.dwg



Surveyors • Planners
1103 West Main Street
Middleton, Idaho
208-585-5858

EXHIBIT MAP OF MAY 1-13 SITE

Lying in a Portion of the NW1/4 of the NE1/4 of
Section 13, Township 8 North, Range 5 West of the
Boise Meridian, Payette County, Idaho
2010



IDAHO WEST NAD 83-GRID BEARINGS
 N 44°02'15.264"
 W 116°52'43.932"
 NAVD 88 DATUM
 EL.=2169.8'



DATE: July 26, 2010	FILE: 0534-01-06 SECTION.dwg
	<p><i>Surveyors • Planners</i></p> <p>1103 West Main Street Middleton, Idaho 208-585-5858</p>

TOPOGRAPHIC MAP OF MAY 1-13 SITE

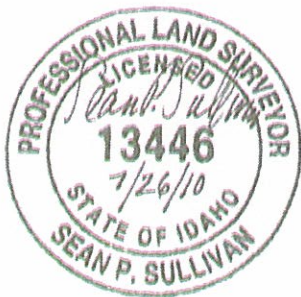
Lying in a Portion of the NW1/4 of the NE1/4 of
Section 13, Township 8 North, Range 5 West of the
Boise Meridian, Payette County, Idaho
2010



SCALE: 1" = 100'



IDAHO WEST NAD 83-GRID BEARINGS
N 44°02'15.264"
W 116°52'43.932"
NAVD 88 DATUM
EL.=2169.8'

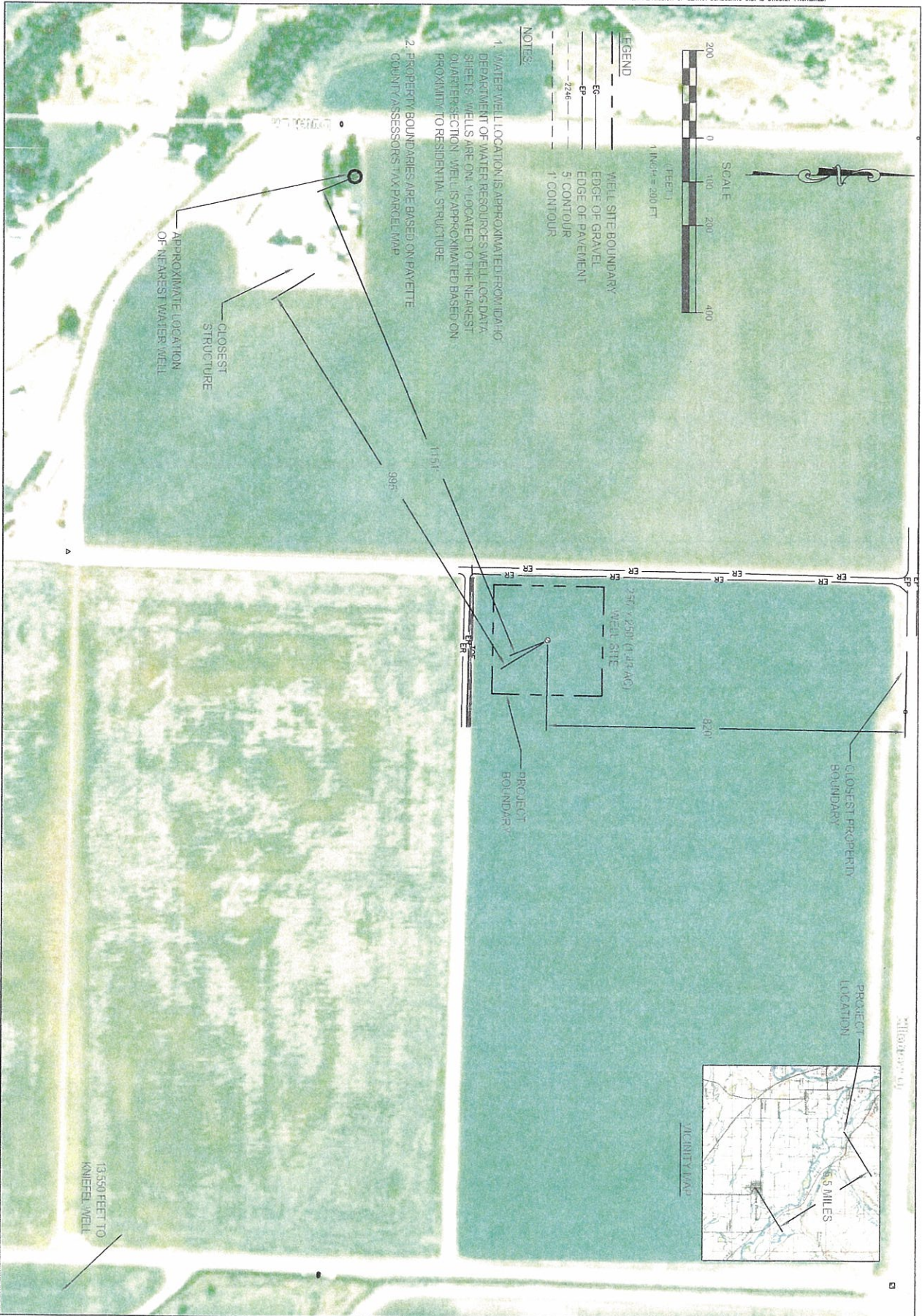


DATE: July 26, 2010

FILE: 0534-01-06 TOPO.dwg



Surveyors • Planners
1103 West Main Street
Middleton, Idaho
208-585-5858



TITLE: BRIDGE ENERGY INC.
PAYETTE, IDAHO OPERATIONS
WELL LOCATION EXHIBIT

DATE: 8/10/10

DESIGNED BY: SHR

DRAWN BY: RWM

CHECKED BY: SHR

SHEET: MAY



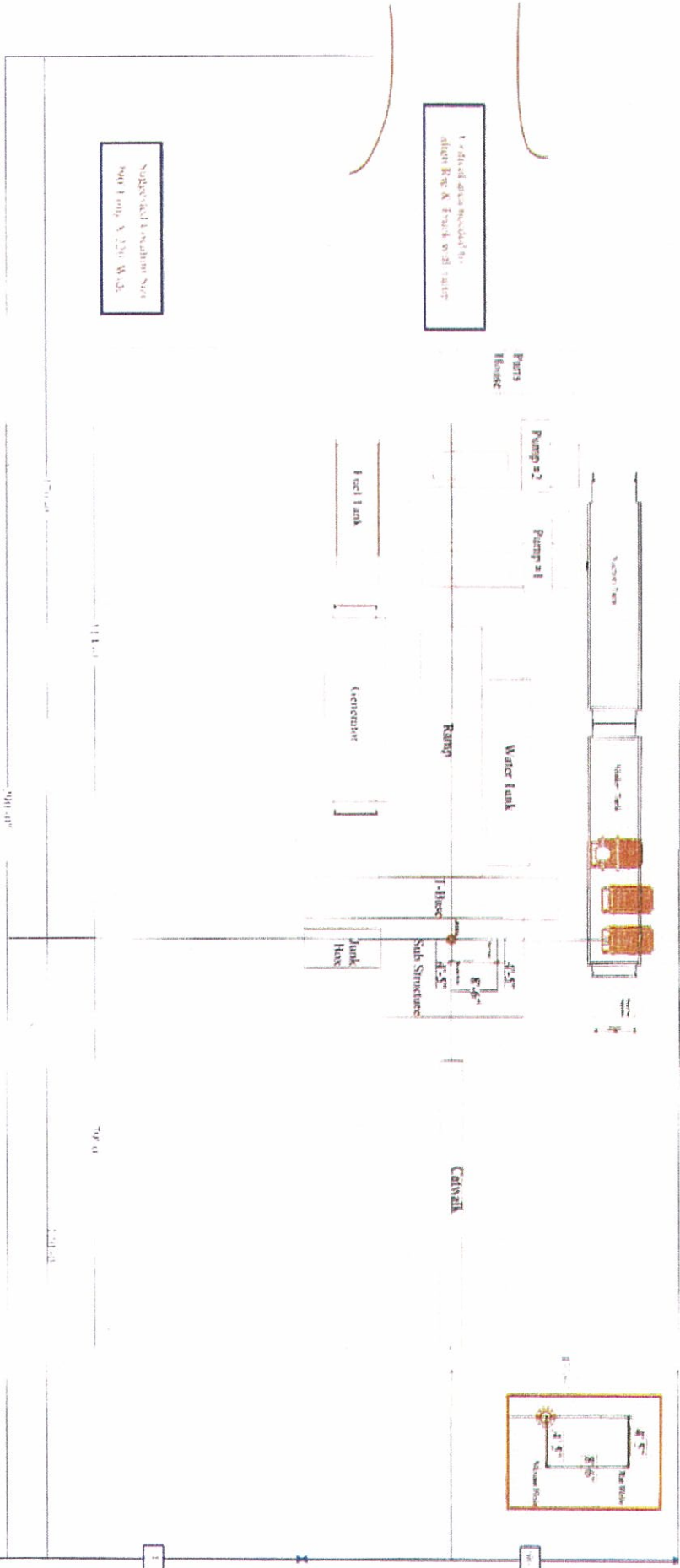
OWNER/DEVELOPER:
BRIDGE ENERGY INC.
1580 LINCOLN ST, STE 1110
DENVER, COLORADO 80203
(303) 831-9022

PROJECT LOCATION:
MAY SITE
DUTCH LANE
PAYETTE, ID 83661

PROJECT CONTACT:
JEFF KIRN

REVISIONS	No.	BY	DATE	DESCRIPTION

Reserve Pit



TSWS, Inc. Razorback Rig/ Location Plat

WHS, LLC
Razorback Rig Component Listing

The following list contains the components of the 2004 Cameron C-900 Hp, Trailer Mounted Drilling Rig w/ VIN Number (5024). This rig also operates w/ a FDS 150 Ton HMI hydraulic Top Drive.

Qty	Item	Remarks
1	Drawworks - Cameron 42"x 12" Water Circulating Drum w/ water cooled main brake and Wichita water cooled assist brake... Wichita Drum Clutch	
1	Power and Drive Package – Twin (2) Detroit Series 60 engines; 450 Hp each w/ Allison 5960 Transmissions into a Cushman 1000 Hp gear driven Compound, to Cushman 1000 Hp RA box; 1:1 Ratio	
1	Mast – PEMCO 120' x 400K lbs hook load; 1.25 API rating; sheaved for 10- 1-1/8" drill lines; Serial # 1312	
2	Hydraulic Scoping Cylinder f/ PEMCO derrick	Spare
1	Fluid Design Services (FDS) 150 Ton Hydraulic Top Drive w/ diesel power package.	
1	Hydraulic Motor FDS 150 Ton Top Drive	Spare
1	Block-200 Ton ABCO, 10 line 5 x 36" sheave w/ ABCO Hook	
1	Weight Indicator-Totco type 4	
1	Sub Structure-17'H x 10'W x 16'L w/6' foldout wings. Unit scopes down to 10'6"H x 13'6" on lowboy.	
1	40' Kelly; Hex	
1	Kelly Bushing	
1	Kelly Shuck w/ protector	
1	Sub-structure/T-base-45' x 8'	
1	Sub-structure ramp-48'4" x 10', hydraulic raise-cylinders part # SD83CC-24-131	
1	Top Dog House-24'10" x 7'10.5", hydraulic raise, with knowledge box, lockers, shelving, and bench seats. Framework installed for Pason Electronic Drilling Recorder and Autodriller computer system.	
1	Kelly Spinner-Cam-tech model 6100 hydraulic Kelly spinner assy.	
	Well Control Equipment-Shaffer LXT DBL 11" x 5K psi MAWP, Dual Ram, hydraulic BOP mfg. Date 11-04, Serial # 200213110-81 Shaffer LTX 11" x 5K psi MAWP spherical annular BOP	

WHS, LLC
Razorback Rig Component Listing

Qty	Item	Remarks
1	4-1/16" x 5000 psi BOP valve	
	Choke Manifold, fitted for HCR valve, choke-w/4outlets, 5000 psi	
1	Closing Unit-Massco Inc. 5 station	
2	Generators-DDC 410 KW generators, 277/480 VAC 3 Phase 60 HZ powered by 2 Detroit Series 60 14.0 L Diesel engines/Tier III Emissions standards. Skid mounted in covered house with all electronic panels as 1 unit.	
1	Generator House-44' x 10' skid mounted	
1	Swivel-EMSCO LB 200 Ton Serial # 208	
1	Mud System-2-tank system w/approx. 700 bbls capacity. 60 HP mud mixers, 4 agitators, 4 jet blowers, 70 bbls slugging tank, 2-Doublelife AWD III Linear shale shakers built in tandem, 600 GPM each. Mud Conditioner unit consisting of; 1- Doublelife AWD III shale shaker, 1-Doublelife Mod. I-210 Desander, and 1- Doublelife V-510, 10 cone Desilter.	
2	Mud Pumps-2 HHF-1000 HP triplex pumps w/pulsation dampners, powered by CAT 3412 1150 HP diesel engines, fully unitized. With 6" liners, 10" stroke, pumps will move 3.7 gal/stroke at 100% efficiency. Additional specifications upon request.	
3	American Roller Bearings for CE-F1000 mud pump	Spare
2	SKF Pillar Block bearings for CE-F1000	Spare
1	Mud/Gas Separator: 30'H x 6' Dia vessel mounted on skid for easy rig up and tear down.	
1	Fresh Water Tank-200 bbl fresh water tank w/electronic 20 HP 480V frame 256T 3 x 2 centrifugal 4 x 6 water pump powered by Detroit 353 (2800 rpm)	
1	Catwalk-47'3" x 10'2" pipe racks	
1	Junk Box-20'9" x 7'10"	
1	Rotary Table-22" IDECO rotary table assy. On 44" centers complete w/split master bushing.	
1	Drill Collar Slips-Type A 5-1/2 MS 98C	
1	Drill Pipe Slips-Wooly M3-98	
1	Drill Collar Clamp(Wedding Band) AOT 12116 5 1/2-6 5/8	

WHS, LLC
Razorback Rig Component Listing

Qty	Item	Remarks
	Serial # 29140	
1	Casing Elevators M66-5 ½ 250 ton 227 MT	
	Drill Pipe Elevators-2-AOT(1) 150 ton(1) 250 ton	
	Cross Over Subs-Assorted	
1	Survey Machine-Wireline survey machine.	
1	Diesel Tank-8000 gal Cylindrical Tank: Myers diesel tank transfer pump assy. w/3hp 3600rpm explosion proof motor. Skid mounted with 3 compartments for oils on front of skid.	

This rig moves in 27 loads (including pipe). All components are skid mounted and mud-boated with lifting ears to be lifted onto oilfield floats or lowboys. All loads are legal permit loads.

DRILLING PROGNOSIS
BRIDGE ENERGY, LLC
May #1-13
NW/4 NE/4 of Section 13-Township 8N-Range 5W
Payette County, Idaho

July 26, 2010

GENERAL

NOTE: This well is to be drilled as a tight hole. Unauthorized personnel are not to be allowed on the rig floor, and all information is to be kept confidential.

Surface Location: 820' FNL and 1461' FEL (NWNE), Section 13-T8N-R5W

Bottomhole Location: Same

Proposed TD/Objective: TD 6800' / Tertiary Sands

Elevation: 2,169.8' GL (ungraded); 2,188' KB (estimated).

Drilling Rig: WHS Razorback

MECHANICAL

Casing Design:

<u>SIZE</u>	<u>INTERVAL</u>	<u>LENGTH</u>	<u>DESCRIPTION</u>	<u>SFt</u>	<u>SFc</u>	<u>SFb</u>
16"	0' - 82'	82'	Conductor (0.219" WT)	--	--	--
9-5/8"	0' - 600+'	600+'	36#, J-55, STC	21.9	8.18	7.04
5-1/2"	0' - 6,800'	6,800'	17#, J-55, EUE	2.69	1.60	1.91
2-7/8"	0' - 6,800'	6,800'	6.5#, J-55, EUE	3.16	3.05	1.45

NOTE: If mud weight exceeds 10.0 ppg at TD, casing design may be altered. Clean and drift all strings of casing prior to running. Remove all thread sealant (Kindex) prior to running. Unload production casing and tubing strings with a forklift.

CEMENT

<u>CASING/HOLE SIZE</u>	<u>CEMENT SLURRY</u>	<u>SX</u>	<u>PPG</u>	<u>YIELD</u>
16" - 24"	Cement to surface with 4 yds Redi-mix.			
9-5/8" - 12-1/4"	Lead: Premium Light cement + 2% CaCl ₂ + 1/4 pps flocele Tail: Class G + 2% CaCl ₂ + 1/4 pps flocele	100	12.0	2.27
		100	15.8	1.15

NOTE: Precede cement with 50 bbl fresh water. Have 100 sx neat cement and one-inch tubing on location for topping-off. Cement volume has been calculated assuming 100% excess.

<u>CASING/HOLE SIZE</u>	<u>CEMENT SLURRY</u>	<u>SX</u>	<u>PPG</u>	<u>YIELD</u>
5 1/2" – 8 3/4"	Class G cement containing fluid loss additive, bonding agent, and retarder as required.	300	15.8	1.15

NOTE: Prior to cementing, slowly lower mud viscosity to 35-sec funnel viscosity. Circulate hole for 1 hour at this viscosity prior to cementing. Precede cement with 1000 gal mud flush and 30 bbl fresh water spacer. Cement top contingent upon the presence of potentially productive intervals. Actual cement volume to be determined from caliper log. Run pilot tests on proposed cement with actual make-up water. Cement design may be altered depending on actual bottomhole temperatures and the presence of lost circulation. Do not move the casing (under any circumstances) while setting the casing slips.

CEMENTING ACCESSORIES

- Surface Casing:
- 1) Guide shoe with insert float located one joint above shoe.
 - 2) Top wiper plug (rubber).
 - 3) Centralizer with stop ring in middle of shoe joint.
 - 4) Centralizers over collars on first three connections, omitting float collar.
 - 5) Use a total of five centralizers.
- Production Casing:
- 1) Differential-fill float collar located one joint above differential-fill float shoe.
 - 2) Top and bottom wiper plug.
 - 3) Centralizer with stop-ring in the middle of shoe joint.
 - 4) Centralize through and 100' on either side of potentially productive intervals. Run at least 12 centralizers.
 - 5) Thread-lock all connections through float collar and use API casing dope on all remaining connections.
 - 6) Stage cementing tool may be run to ensure placement of cement across any productive intervals and fresh water sands.
 - 7) Centralize above and below stage cementing tool (if run).

WELLHEAD

- Casing Head: 9-5/8" x 11" x 3,000 psi WP flanged casing head with two-2" LP outlets. Outlets equipped with one-2" 3,000 psi WP ball valve, and one-2" x 3,000 psi WP bull plug on the outlets.
- Tubing Head: 11" x 7-1/16" x 3,000 psi WP tubing head with two-2" LP threaded outlets. Outlets to be equipped with 2" x 3,000 psi WP ball valves.
- Upper Half: To be determined.

MUD PROGRAM

<u>INTERVAL</u>	<u>WEIGHT (PPG)</u>	<u>VISCOSITY (SEC)</u>	<u>WL (CCS)</u>
0' – 600+'	8.5 - 9.0 ppg	30 - 45 sec	NC

Surface hole will be drilled with SBM. Ensure all water sources are turned off at pits. Water from conductor will be displaced to D tank. Keep hole full and drill pipe moving at all times. Sweep hole with Super Sweep to insure the hole is clean prior to running surface casing.

<u>INTERVAL</u>	<u>WEIGHT (PPG)</u>	<u>VISCOSITY (SEC)</u>	<u>WL (CCS)</u>
600+' – 6,800'	8.5 - 9.8 ppg	28 - 34 sec	10 ccs or less

Reference SBM program for specific maintenance, product concentrations, and mud treatment. Keep hole full at all times. Monitor pit volume constantly as lost circulation and water flows should be expected at all times. Sweep hole as dictated by hole conditions. Ensure all MSD sheets are kept at wellsite.

Deviation tendencies in this area should not be severe; however, prudent drilling practices should be adhered to at all times. Surveys should be run at ± 500 ft intervals, unless otherwise indicated.

WELL CONTROL EQUIPMENT

<u>INTERVAL</u>	<u>EQUIPMENT</u>
0' – 600+'	None
600+' – 6,800'	11" x 5,000 psi WP double-gate BOP with blind and 4-1/2" pipe rams. Rig should be equipped with upper and lower kelly cocks, as well as stabbing valve (have wrench available at all times). BOP equipment will be tested after nipple-up and every 30 days thereafter by an Independent Certified BOP Tester. (Produced signed copies of BOP test charts to Idaho State representative). Close pipe rams daily and blind rams on trips, recording results on tour sheets. BOP Function Test.

GEOLOGICAL

Geologist/Mud Logger: Geologist and mud logger with hotwire and chromatograph to be on location to from top of surface hole to TD. Notify prior to spud and after setting surface casing.

Electric Logging: Quad Combo (DIL-BHC Sonic-Density-Neutron to be run from base of surface casing to TD. An imaging tool and Magnetic Resonance tool may also be run. Percussion sidewall cores may be taken at the geologist's discretion.

Drilling Prognosis
Dutch Prospect
May #1-13

Page Four

GEOLOGICAL (Continued)

Formation Tops: Assumes KB elevation of 2,188 ft.

<u>FORMATION</u>	<u>DRILL DEPTH</u>	<u>SUB SEA</u>
Idaho Group Sands	Surface	+ 2,170'
Pro Delta Shale	580'	+ 1,608'
Hamilton Sands	1,600'	+ 588'
Glens Ferry Shale	2,600'	- 412'
Chalk Hills	4,000'	- 1,812'
Willow Sand	5,100'	- 2,912'
Total Depth	6,800'	

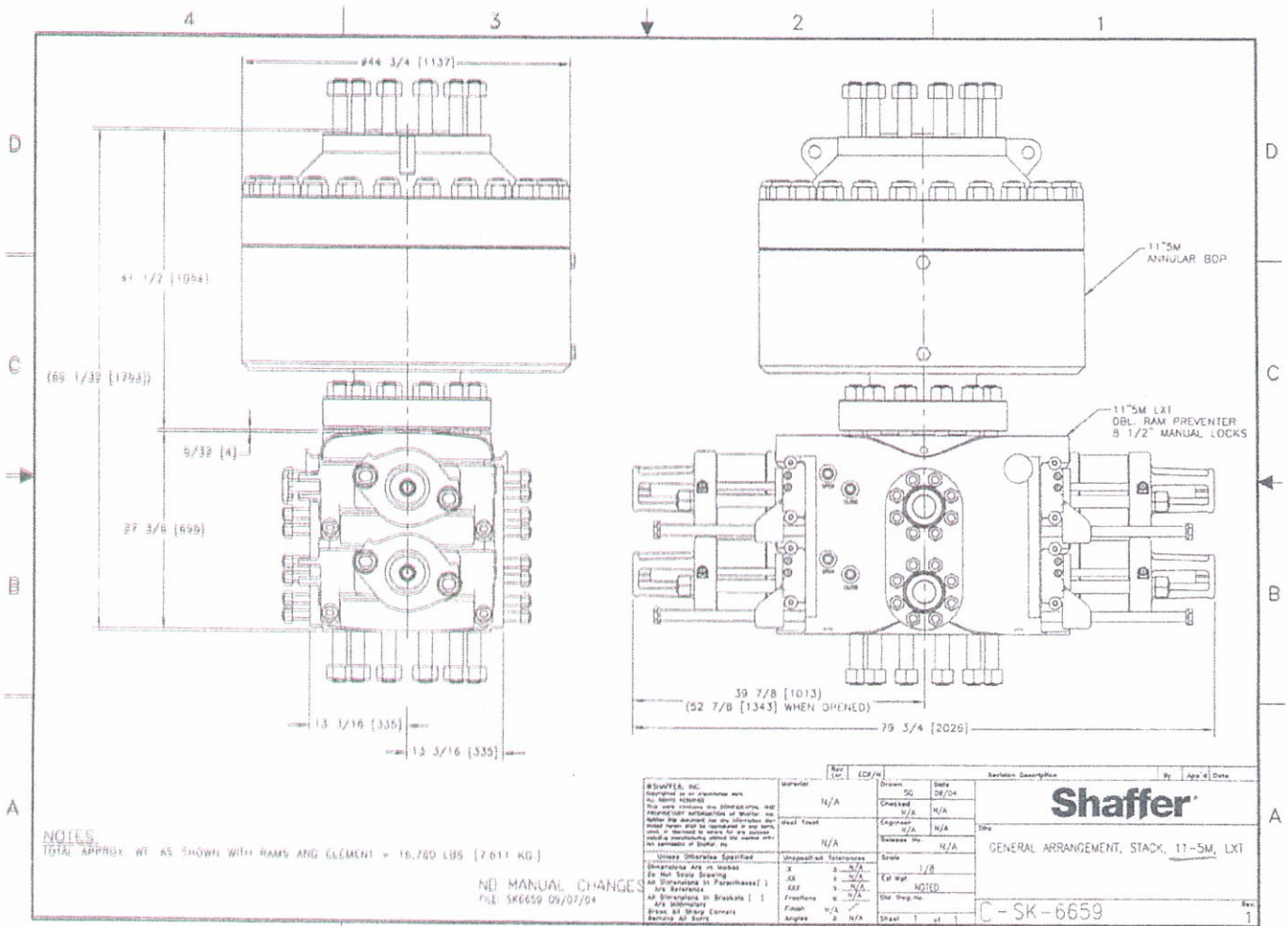
MISCELLANEOUS

1. Pump carbide lag prior to running surface casing and prior to drilling out shoe. Pump efficiencies will be calculated from this information. Run frequent carbide lags while drilling to determine degree of hole washout.
2. Monitor mud hydraulics closely. An in-gauge hole is extremely critical to achieve open-hole packer seats, interpretable logs, and a good cement bond.
3. Water will be hauled or pumped from nearby sources.
4. The area immediately around rig will be lined.
5. It is anticipated that a PDC bit will be used from approximately 600' to TD.
6. In general, the above prognosis is presented as a guideline only; and is subject to change as dictated by hole conditions and geological interpretation.

<u>PERSONNEL</u>	<u>OFFICE NUMBER</u>	<u>CELL NUMBER</u>
Ron Richards	303-831-9022	720-209-0207
Tom Stewart, Vice President	303-831-9022	303-819-5406
Ed Davies, President	303-831-9022	720-641-8737

Prepared by:

Ron Richards for Bridge Energy Inc.



*Manifold spool 11" SM x 11" 500
1 outlet*

Rev	Issued	By	App'd	Date	Revision Description
1	30	Checked		09/04	
		Checked			
		Engineer			
		Checked by			
		Scale			
		Ed Wp			
		Use Prop.			
		Sheet			

Shaffer

GENERAL ARRANGEMENT, STACK, 11"-SM, LXT

C-SK-6659

Rev. 1

4 1/16" 5M X 2 1/16" 5M CHOKE MANIFOLD

