



ALTA MESA SERVICES, LP

15021 Katy Freeway, Suite 400
Houston, Texas 77094
(281) 530-0991
(281) 530-5278 FAX

September 15, 2016

James Thum
Oil & Gas Program Manager
Idaho Department of Lands
300 N. 6th Street, Suite 103
Boise, ID 83702

RE: Notice of Intention to Abandon Well
Smoke Ranch #1-21, API #11-075-20021

Dear Mr. Thum,

This letter is to inform you of Alta Mesa Services, LP intent to permanently plug and abandon the Smoke Ranch #1-21 well located in Section 21, Township 8N, Range 4W. Preliminary review determines that this well might not be cost effective for us to build the required infrastructure in order to produce it. Attached is the most updated Wellbore Diagram for your reference.

Following is the general procedure that we plan to use for the proposed work:

1. Move in electric wireline unit and make one cement dump bail run. This well is natural gas and allows us to pump the main cement plug from the surface and achieve correct placement of the cement. Set bridge plug at 4131' (20' above top perforation).
2. Move in cilfield cement pump truck and pump straight into the perforations.
3. Cut off wellhead and cap same with metal plate per IDL regulations. Cut off all pipe at 6' below ground level. Weld steel plate on top of pipe. Mark location with at least 4" diameter pipe at least 10' in length, leaving 4' above the ground level. This pipe is to be welded to the surface casing or embedded in cement.
4. Restore location per IDL and landowner requirements.
5. File final abandonment records with state.

For more detailed information, please reference the attached worksheet. We intend to begin this work as soon as possible, in order to use resources efficiently in completing work on other wells as explained in previous Sundry Notices. Thank you for your consideration of this request. If you should have any further questions, please feel free to contact me at 361-960-5671.

Sincerely,

Ronda Louderman
Regulatory & Pipeline Supervisor

DEPT. OF LANDS
BOISE, IDAHO
2016 SEP 16 AM 9:58

INTENTION TO ABANDON WELL

Lease Name: Smoke Ranch #1-21 Operator: Alla Mesa Services, LP

Well No. 11-075-20021 Address: 15021 Katy Freeway, Ste 400, Houston, TX 77094

Field & Reservoir: Willow County: Payette

Location of Well: Section 21, Township 8N, Range 4W

Work to Be Performed: Permanently Plug & Abandon Smoke Ranch #1-21 Natural Gas Well.

Work Performed By: (Name of Contractor Used by AMS) C&I Energy Services, LTD

Plugs:	Kind	Depth	Zone Squeezed	Expected Amount of Cement
Production Casing and Perforation Plug	Cement	6' - 4151	4151 - 4178' Sand	110 barrels
Plug back plug	Cast Iron Bridge Plug plus cement cap	4205 - 4221	4232-4240' Sand plug back	Not applicable - preexisting
Production Casing Float Collar, Shoe Joints, Float Shoe	Cement, Cast Iron / composite Float Collar and Float Shoe	4998 - 5088'	Not applicable	Not applicable - preexisting
Production Casing / Surface Casing Annulus	Cement	6-885'	Not applicable	Not applicable - preexisting
Surface Casing / Conductor Annulus	Cement	6 - 136'	Not applicable	Not applicable - preexisting
Conductor / ground annulus	Cement	6-136'	Not applicable	Not applicable - preexisting
Formations:				
Sandstone	4151-4178 Wildcat Sand		Fluid Content	Depth Interval
Sandstone	4232 - 4240 Wildcat Sand		Gas-low permeability Water and gas	4151 - 4178 4232-4240
Casing:				
Conductor	6 - 136'	Expected Leave in place or Remove	Other Comments	
Surface	6 - 885'	Leave in place	cemented in place	
Production	6 - 5088'	Leave in place	cemented in place	

Material to be used in plugging: Class G Cement

**Plugged intervals; cement must be placed for a length of at least 100 feet on either side of each casing shoe, or casing bottom if no shoe present. If the bottom of the hole is less than 100 feet from the bottom of the lowest casing, the entire length of the uncased hole below the casing will be cemented.

DEPT. OF LANDS
BOISE, IDAHO
2016 SEP 16 AM 9:58

Smoke Ranch LLLP 1-21

ALTA MESA SERVICES, LP

Willow Field

Payette County, Idaho

Surface Location: Section 20 Township 8N Range 4W Bottom Hole Location: Section 21 Township 8N Range 4W

Surface Location: 268' FEL, 2,300' FNL Bottom Hole Location: 77' FWL, 1,555' FNL

GL - 2187.0' DF - 2203.0' DF to GL - 16'

Spud Date: 7-14-2013

Last updated on: 20160909/20140403

Last updated by: K Smith

Schlumberger Logs: GR, SP, Ind/Res, Dens/Por (2013-07-25)

Weatherford Wireline: CBL, GR, CCL @ 0psi & 1500psi (2013-08-14)

Slumberger Logs: RST 4965-3965'; C/O 4350-4100' (20131122)

138 sks + 6% TC-GEL BWOC + 5% Sodium Chloride BWOW+4% Gypsum Hemi=Hydrate #/sks; 44 bbls @ 13.1 ppg// 1.79 cft/sks. Mix and pump tail 66 sks + 5% Sodium Chloride BWOW// 16 bbl @ 14.6 ppg. 1.36 cft/sks. Full returns during cement job. 18 bbls of 20 bbl spacer water back. no cement back to surface. Run in one inch and top out with 36 sk s= 8.7 bbls of cement @ 14.6 ppg. Cement to surface staying in place.

Deviation Information:

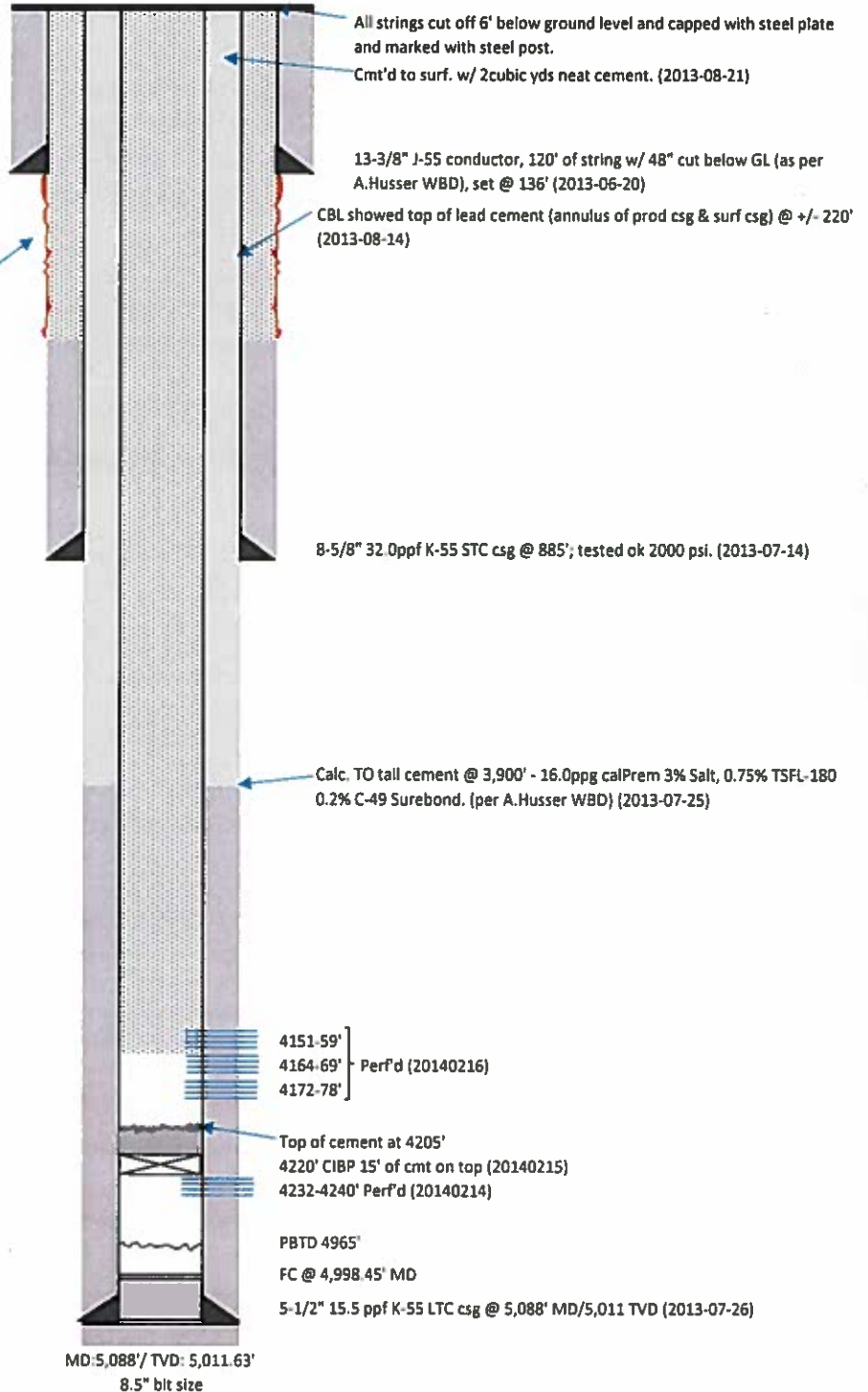
KOP @ 890' (MD)

Build 2.56-6.14"/100' to 15.50° INC @ 30.0° AZI @ 1,300'MD/1,295'TVD

Hold w/ slight drop 0-2.97"/100' to 3,886'MD/3814'TVD

Drop 0.05-4.40"/100' fr 11.7° INC @ 27.6° AZI to <1° @ 4,391'MD/4,315'TVD

Slight build 0.11-0.91"/100' fr 4,580' to 1.80° INC @ 210.6° AZI @ 5,088'MD/5,011.63'TVD



DEPT. OF LANDS
 2016 SEP 16 AM 10:04
 POISE, IDAHO