



Weatherford

1 INCH COMPACT TRIPLE COMBO

QUICKLOOK

LOG

COMPANY

ALTA MESA SERVICES, LP
ML INVESTMENTS 1-3

WELL

WILDCAT

FIELD

PROVINCE/COUNTY PAYETTE
COUNTRY/STATE U.S.A. / IDAHO

LOCATION

SHL:1625' FNL& 3276' FEL

SEC 3 TWP 8N RGE 4W

Other Services

API Number 11-075-20026

Permanent Datum G.L., Elevation 2675 feet

Log Measured From KB

Drilling Measured From KB @ 13 FT

Date 13-DEC-2015

Run Number ONE

Service Order 2653-137165422

Depth Driller 5585.00 feet

Depth Logger 5585.00 feet

First Reading 5560.00 feet

Last Reading 1088.00 feet

Casing Driller 1084.00 feet

Casing Logger 1088.00 feet

Bit Size 8.750 inches

Hole Fluid Type WBM

Density / Viscosity 10.00 lb/USg 40.00 sec/qt

PH / Fluid Loss 12.00 13.80 ml/30Min

Sample Source FLOWLINE

Rm @ Measured Temp 2.70 @ 79.0 ohm-m

Rmf @ Measured Temp 2.16 @ 79.0 ohm-m

Rmc @ Measured Temp 3.24 @ 79.0 ohm-m

Source Rmf / Rmc CALC CALC

Rm @ BHT 1.38 @150.0 ohm-m

Time Since Circulation 0 HOURS

Max Recorded Temp 158.00 deg F

Equipment / Base 13045 CASPER

Recorded By W.HANKS

Witnessed By DAVE SMITH

Elevations:
KB 2687.00
DF 2686.00
GL 2675.00

BOREHOLE RECORD

Last Edited: 12-DEC-2015 20:59

Bit Size inches	Depth From feet	Depth To feet
8.750	1084.00	5585.00

CASING RECORD

Type	Size inches	Depth From feet	Shoe Depth feet	Weight pounds/ft
SURFACE	9.625	0.00	1084.00	40.00

REMARKS

SOFTWARE VERSION USED: 15.03.5939
 TOOLS CONVEYED VIA DRILL PIPE/COMPACT WELL SHUTTLE

LOGS RECORDED USING A 200V MEMORY LOGGING SYSTEM
 200V EXTENDED BATTERIES USED TO POWER TOOLSTRING

ALL DEPTHS RECORDED WITH WEATHERFORD ADVANTAGE DEPTH SYSTEM IN CONJUNCTION WITH RIG PASON EDR SYSTEM
 ALL DEPTHS CORRECTED TO DRILLER'S STRAP DEPTH

TIGHT PULLS, BOREHOLE SIZE, AND RUGOSITY MAY AFFECT DATA QUALITY

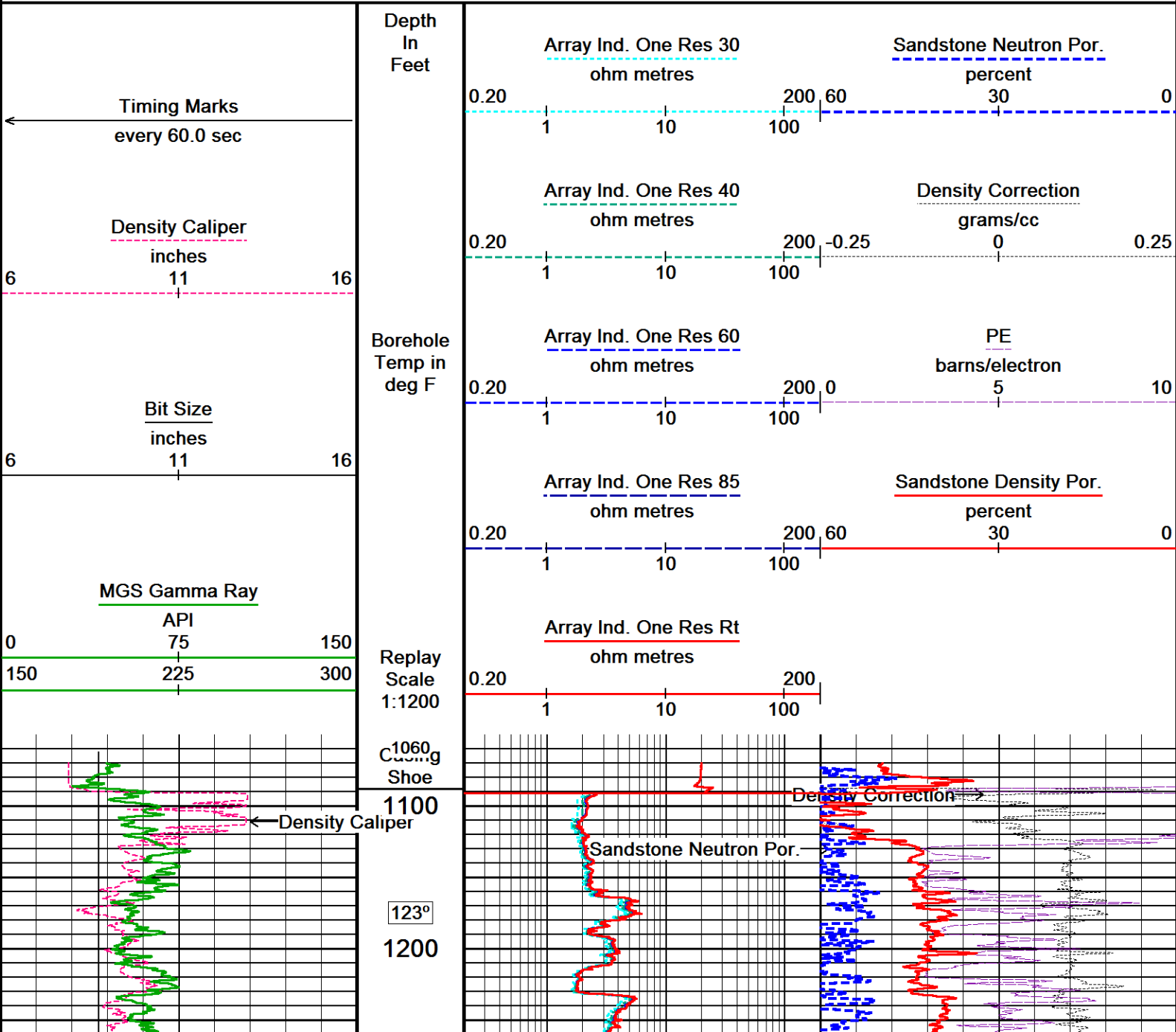
HARDWARE USED: MPD - 4 INCH PROFILE PLATE
 MAI - INDUCTION STANDOFF ASSEMBLY
 MFE AND MAI STOOD OFF 0.5 INCHES USING ISA AND MISE ANCILLARIES

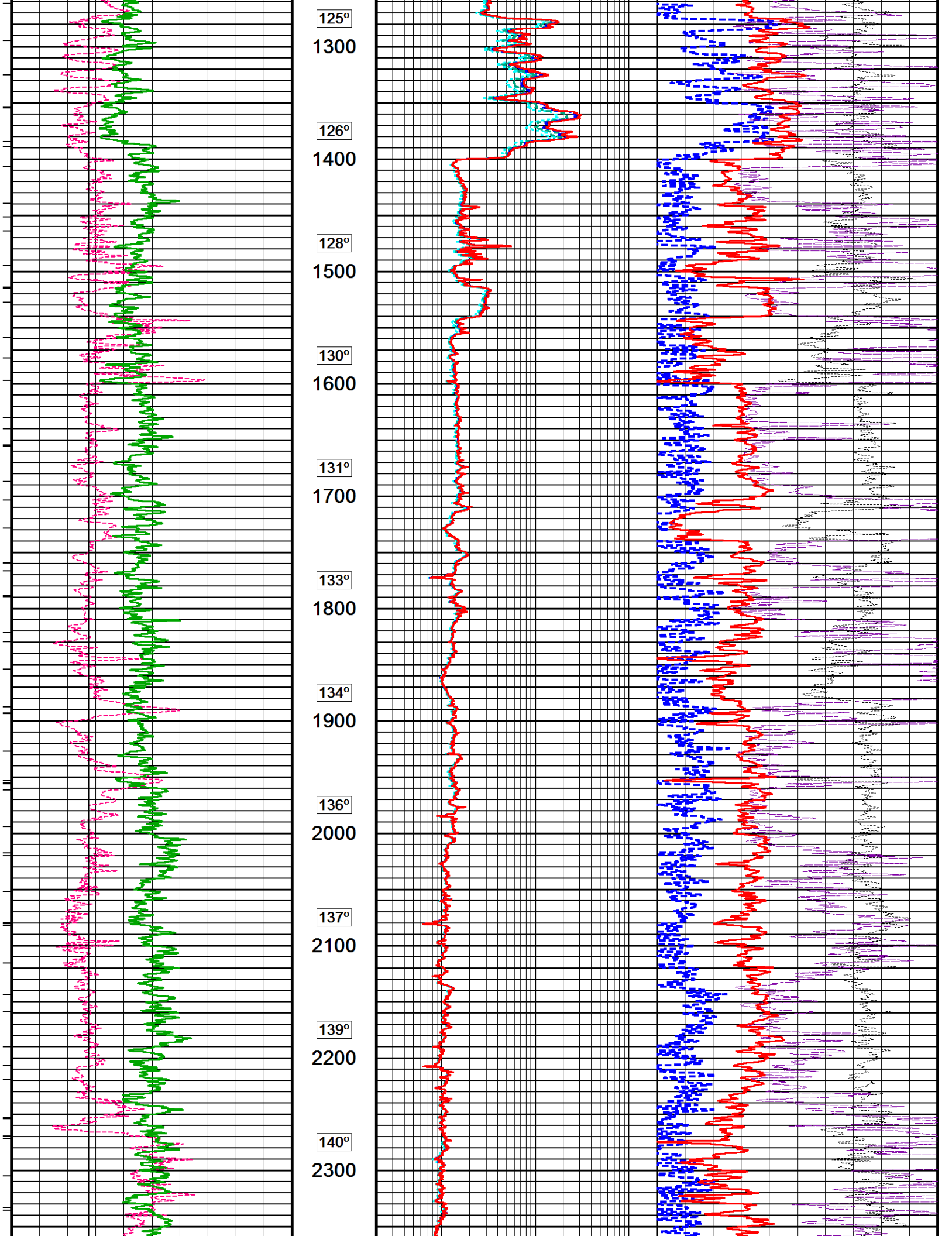
7 INCH PRODUCTION CASING SIZE USED TO CALCULATE ANNULAR HOLE VOLUME
 ANNULAR HOLE VOLUME FROM T.D. TO SURFACE CASING : 810 CUBIC FEET
 HOLE VOLUME FROM T.D. TO SURFACE CASING: 2000 CUBIC FEET

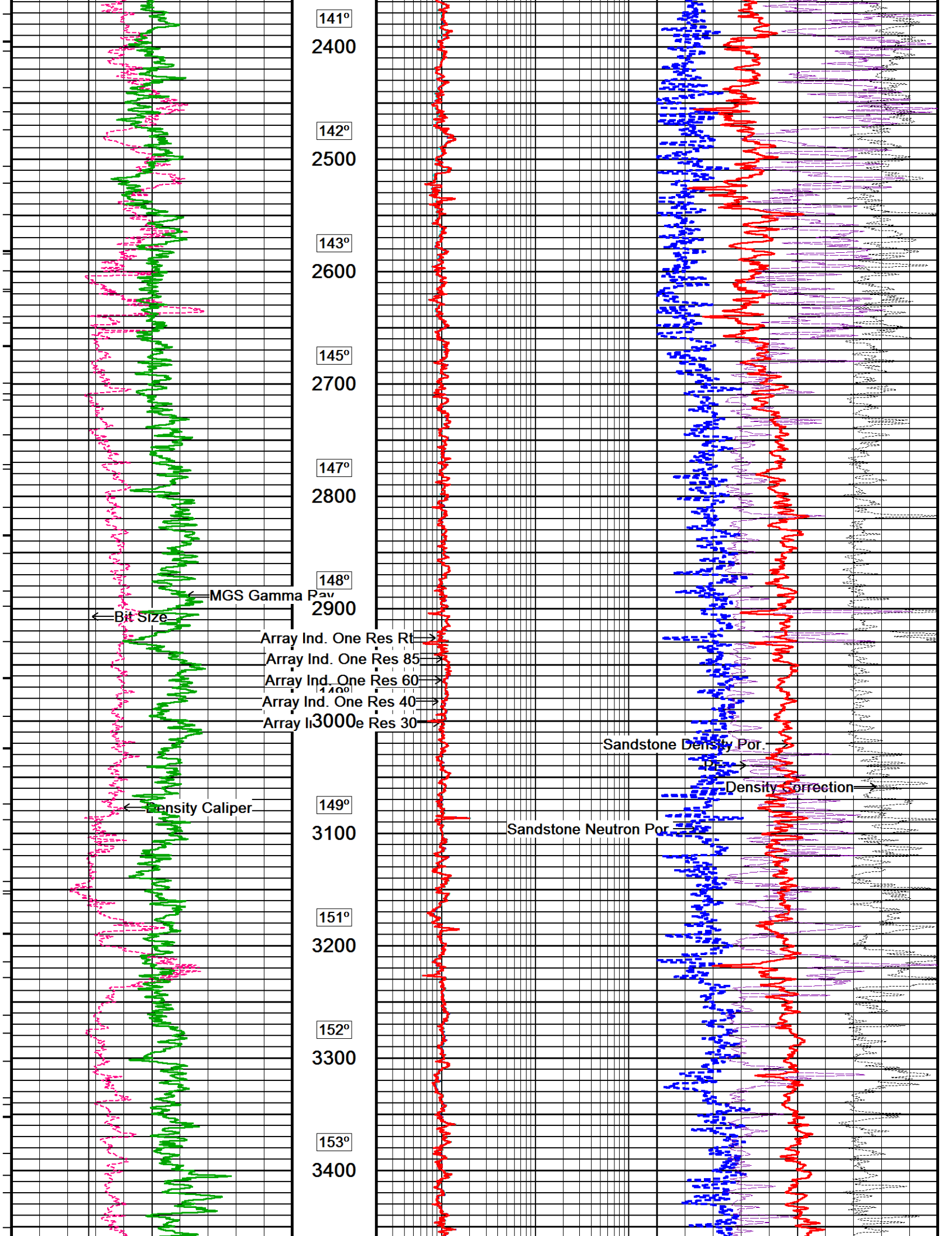
In interpreting, communicating or providing information and/or making recommendations, either written or oral, as to logs or test or other data, type or amount of material, or Work or other service to be furnished, or manner of performance, or in predicting results to be obtained, the Contractor will give the Company the benefit of the Contractor's best judgment based on its experience and will perform all such Work in a good and workmanlike manner. Any interpretation of test or other data, and any recommendation or reservoir description based upon such interpretations, are opinions based upon inferences from measurements and empirical relationships and assumptions, which inferences and assumptions are not infallible, and with respect to which professional engineers and analysts may differ. ACCORDINGLY ANY INTERPRETATION OR RECOMMENDATION RESULTING FROM THE SERVICES WILL BE AT THE SOLE RISK OF THE COMPANY, AND THE CONTRACTOR CANNOT AND DOES NOT WARRANT THE ACCURACY, CORRECTNESS OR COMPLETENESS OF ANY SUCH INTERPRETATION OR RECOMMENDATION, WHICH INTERPRETATIONS AND RECOMMENDATIONS SHOULD NOT, THEREFORE, UNDER ANY CIRCUMSTANCES BE RELIED UPON AS THE SOLE OR MAIN BASIS FOR ANY DRILLING, COMPLETION, WELL TREATMENT, PRODUCTION OR FINANCIAL DECISION, OR ANY PROCEDURE INVOLVING ANY RISK TO THE SAFETY OF ANY DRILLING ACTIVITY, DRILLING RIG OR ITS CREW OR ANY OTHER INDIVIDUAL. THE COMPANY HAS FULL RESPONSIBILITY FOR ALL DECISIONS CONCERNING THE SERVICES.

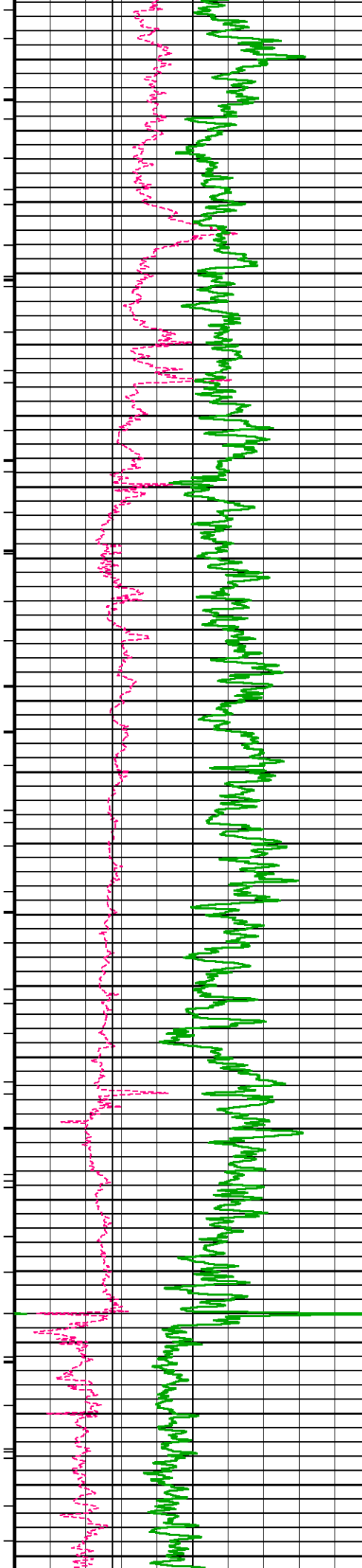
1 INCH MAIN LOG

Depth Based Data - Maximum Sampling Increment 10.0cm Plotted on 16-DEC-2015 10:39
 Filename: C:\Users\jenkinlm\AppData\Local\Temp\Weatherford ...ML Investments 1-3 MMS Depth.dta Recorded on 13-DEC-2015 21:49
 System Versions: Logged with 15.03.5939 Processed with 15.03.5939 Plotted with 13.08.1505

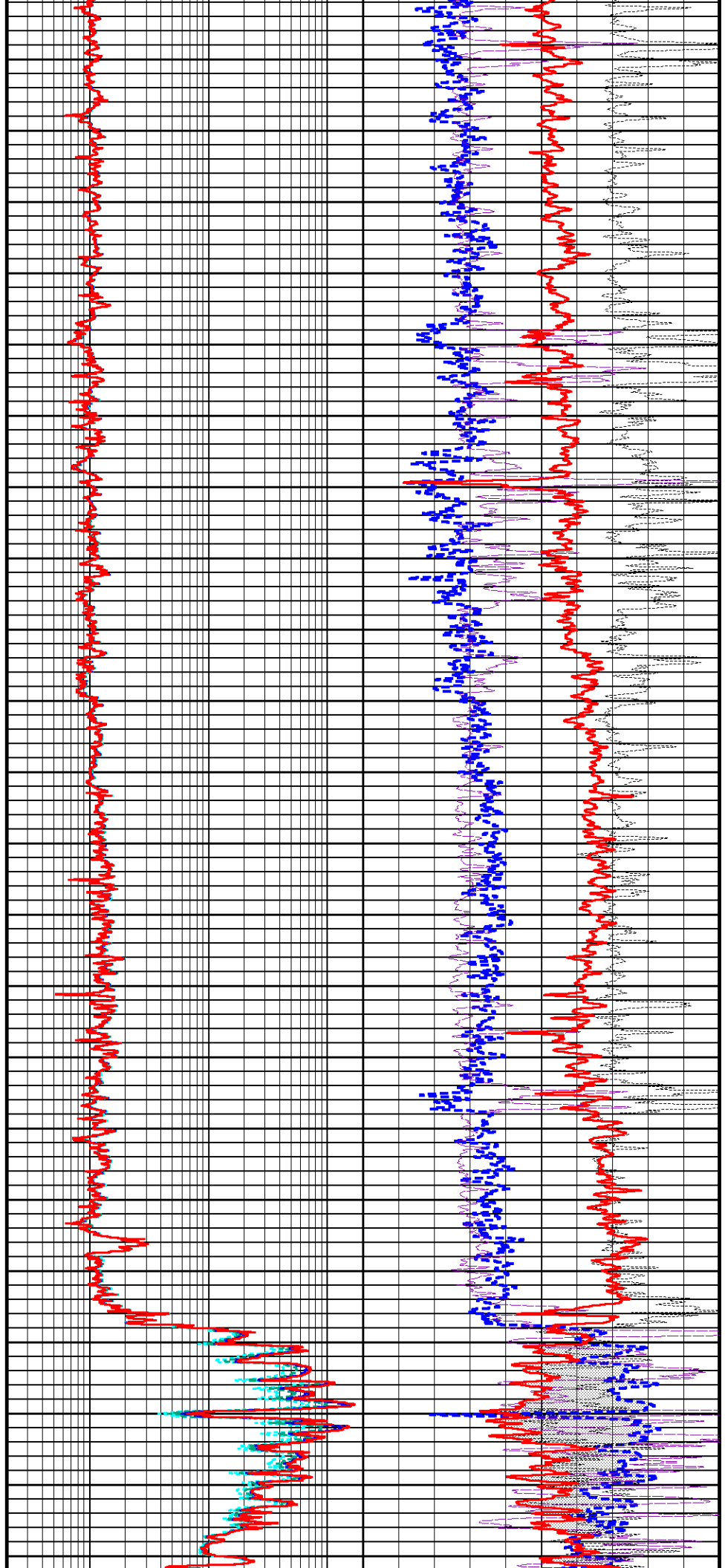


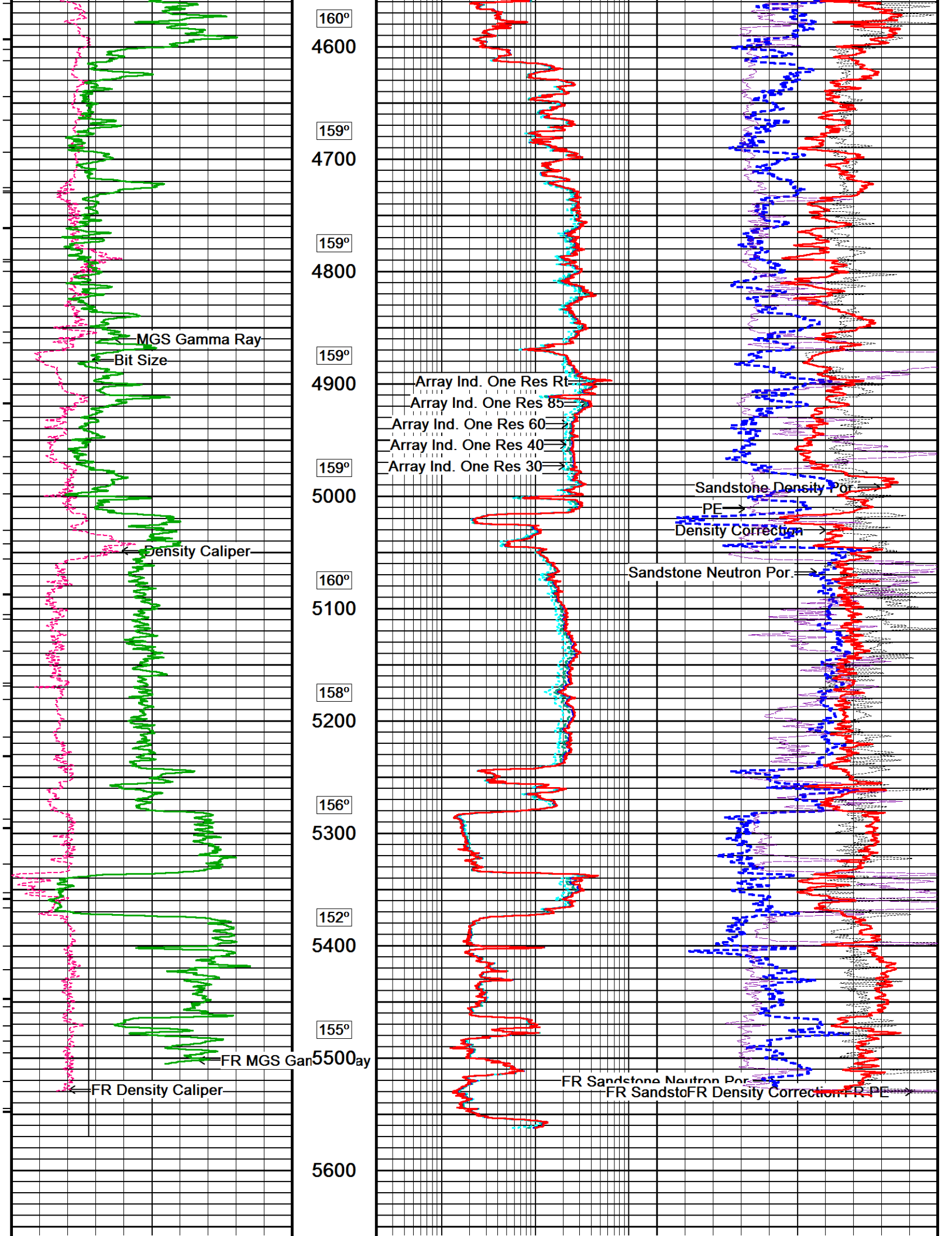


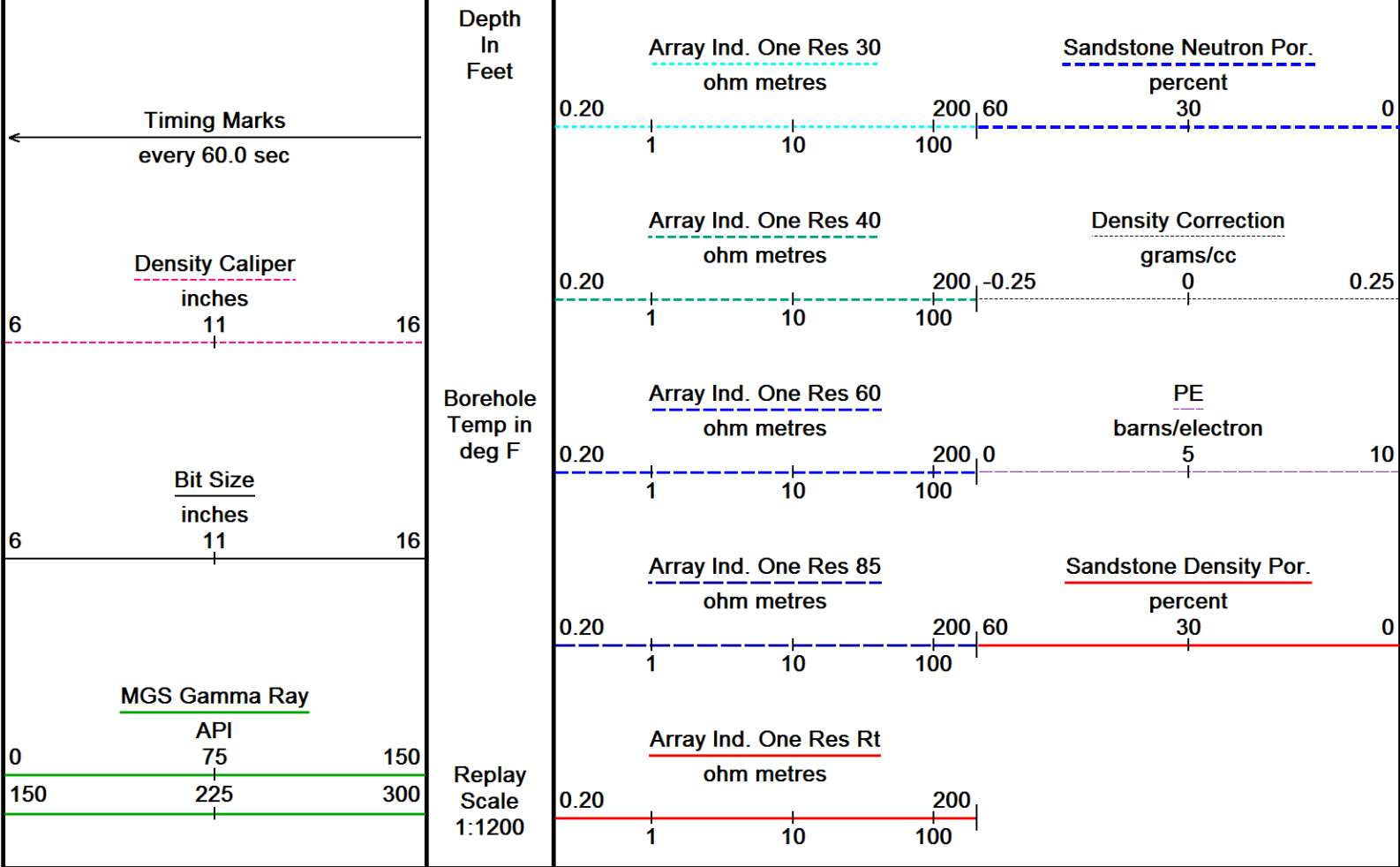




154°
3500
155°
3600
155°
3700
156°
3800
157°
3900
158°
4000
159°
4100
159°
4200
159°
4300
159°
4400
160°
4500







Depth Based Data - Maximum Sampling Increment 10.0cm
 Plotted on 16-DEC-2015 10:39
 Filename: C:\Users\jenkinlm\AppData\Local\Temp\Weatherford ...ML Investments 1-3 MMS Depth.dta
 Recorded on 13-DEC-2015 21:49
 System Versions: Logged with 15.03.5939 Processed with 15.03.5939 Plotted with 13.08.1505

1 INCH MAIN LOG

DOWNHOLE EQUIPMENT

C:\Users\jenkinlm\AppData\Local\Temp\Weatherford PreView16\0\ML Investments 1-3 MMS Depth.dta

Shuttle Running Tool 3.5"
 SRT-A.A 35 LG: 6.62 ft WT: 37.5 lb OD: 2.520 in

200v Compact Battery Sub
 MBS-F.A 145 LG: 10.61 ft WT: 70.5 lb OD: 2.240 in

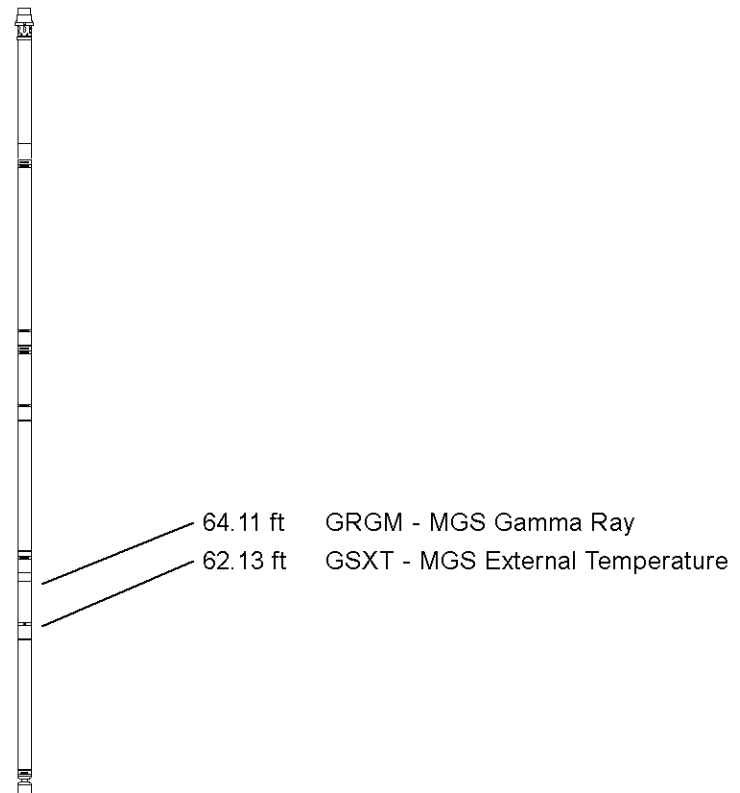
Compact Memory Sub F.A
 MMS-F.A 249 LG: 5.20 ft WT: 37.5 lb OD: 2.240 in

Compact Tool Isolator sub.
 MTI-C.A 99 LG: 1.54 ft WT: 13.2 lb OD: 2.240 in

Compact Short Gamma
 MGS-D.A 218 LG: 3.41 ft WT: 24.3 lb OD: 2.244 in

Compact Collar Locator
 MCL-C.A 128 LG: 3.17 ft WT: 26.5 lb OD: 2.244 in

Compact Knuckle Joint
 SKJ-E.B 537 LG: 2.17 ft WT: 24.3 lb OD: 2.240 in



Compact Swivel Head Adaptor
SHA-J.B 512 LG: 2.30 ft WT: 22.0 lb OD: 2.244 in

Compact Inline Bowspring sub
MIS-D.B 730 LG: 5.70 ft WT: 33.1 lb OD: 2.240 in

Compact Neutron
MDN-C.A 462 LG: 5.04 ft WT: 50.7 lb OD: 2.244 in

Compact Density/Caliper
MPD-D.A 478 LG: 9.59 ft WT: 90.4 lb OD: 2.244 in

Compact Vee Arm Caliper
MVC-A.A 142 LG: 8.06 ft WT: 61.7 lb OD: 2.244 in

Compact Swivel Head Adaptor
SHA-J.B 573 LG: 2.30 ft WT: 22.0 lb OD: 2.244 in

Compact Knuckle Joint
SKJ-E.A 203 LG: 2.17 ft WT: 24.3 lb OD: 2.244 in

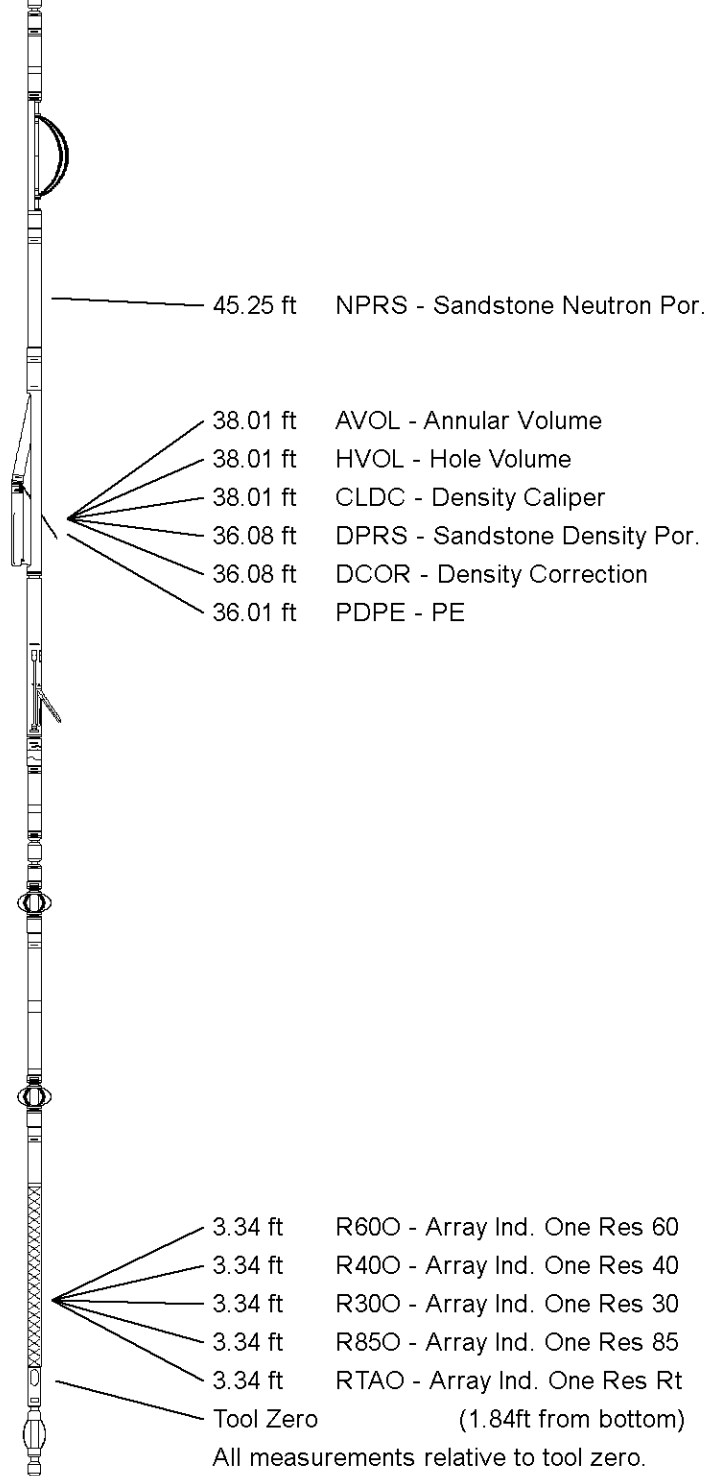
Compact Inline Standoff sub
MIS-E.A 277 LG: 2.14 ft WT: 15.4 lb OD: 2.240 in

Compact Focussed Electric
MFE-C.A 404 LG: 6.05 ft WT: 48.5 lb OD: 2.244 in

Compact Inline Standoff sub
MIS-E.B 662 LG: 2.14 ft WT: 15.4 lb OD: 2.240 in

Compact Induction
MAI-B.J 363 LG: 12.52 ft WT: 48.5 lb OD: 2.240 in

Total Length: 90.72 ft Weight: 665.8 lb



COMPANY	ALTA MESA SERVICES, LP
WELL	ML INVESTMENTS 1-3
FIELD	WILDCAT
PROVINCE/COUNTY	PAYETTE
COUNTRY/STATE	U.S.A. / IDAHO

Elevation Kelly Bushing	2687.00	feet	First Reading	5560.00	feet
Elevation Drill Floor	2686.00	feet	Depth Driller	5585.00	feet
Elevation Ground Level	2675.00	feet	Depth Logger	5585.00	feet



1 INCH COMPACT TRIPLE COMBO

QUICKLOOK

Weatherford[®]

LOG

