



WAVEFORM SONIC MEMORY LOG

COMPANY Alta Mesa Services, LP
WELL Smoke Ranch 1-21
FIELD Willow
COUNTY Payette
STATE Idaho

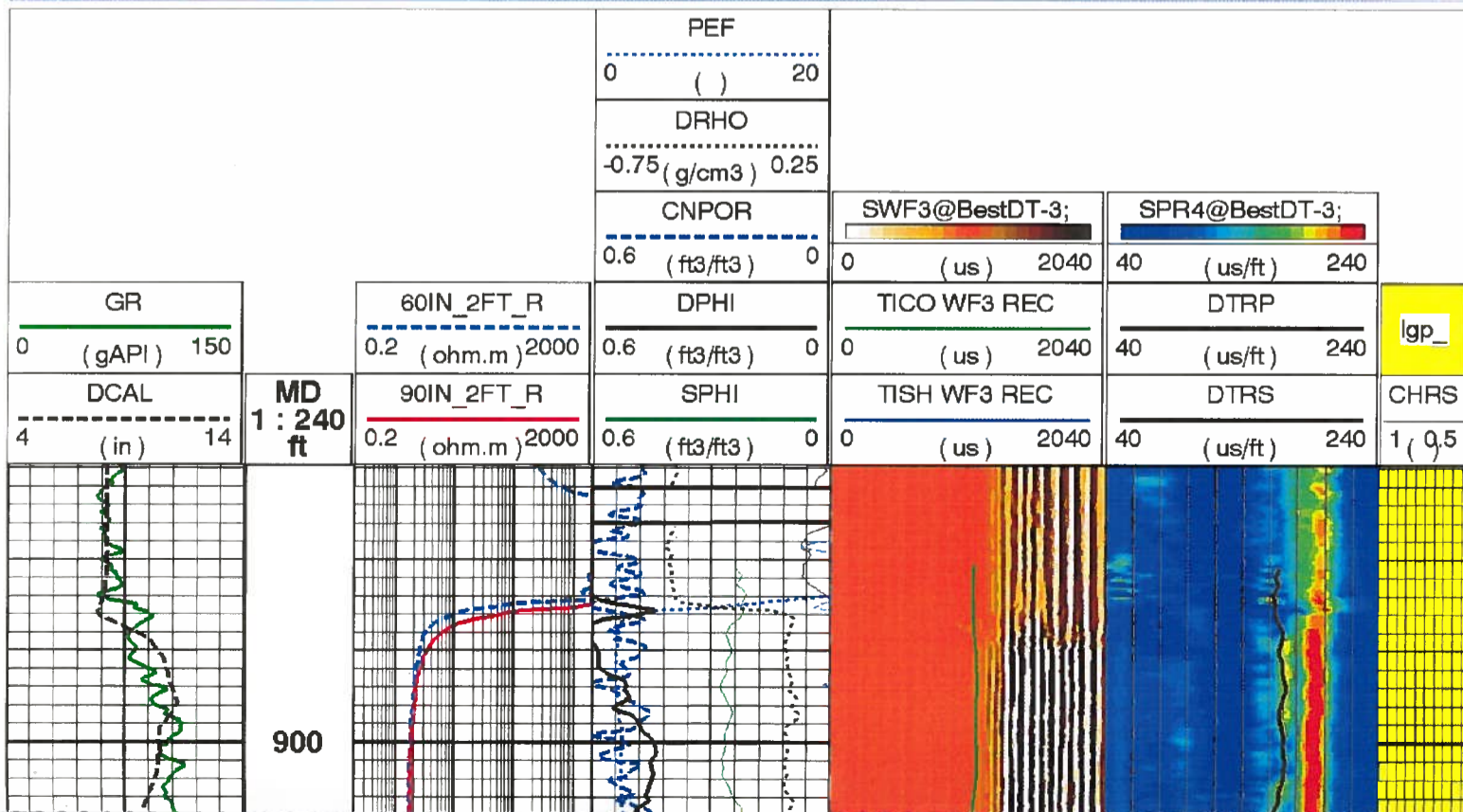
CONFIDENTIAL

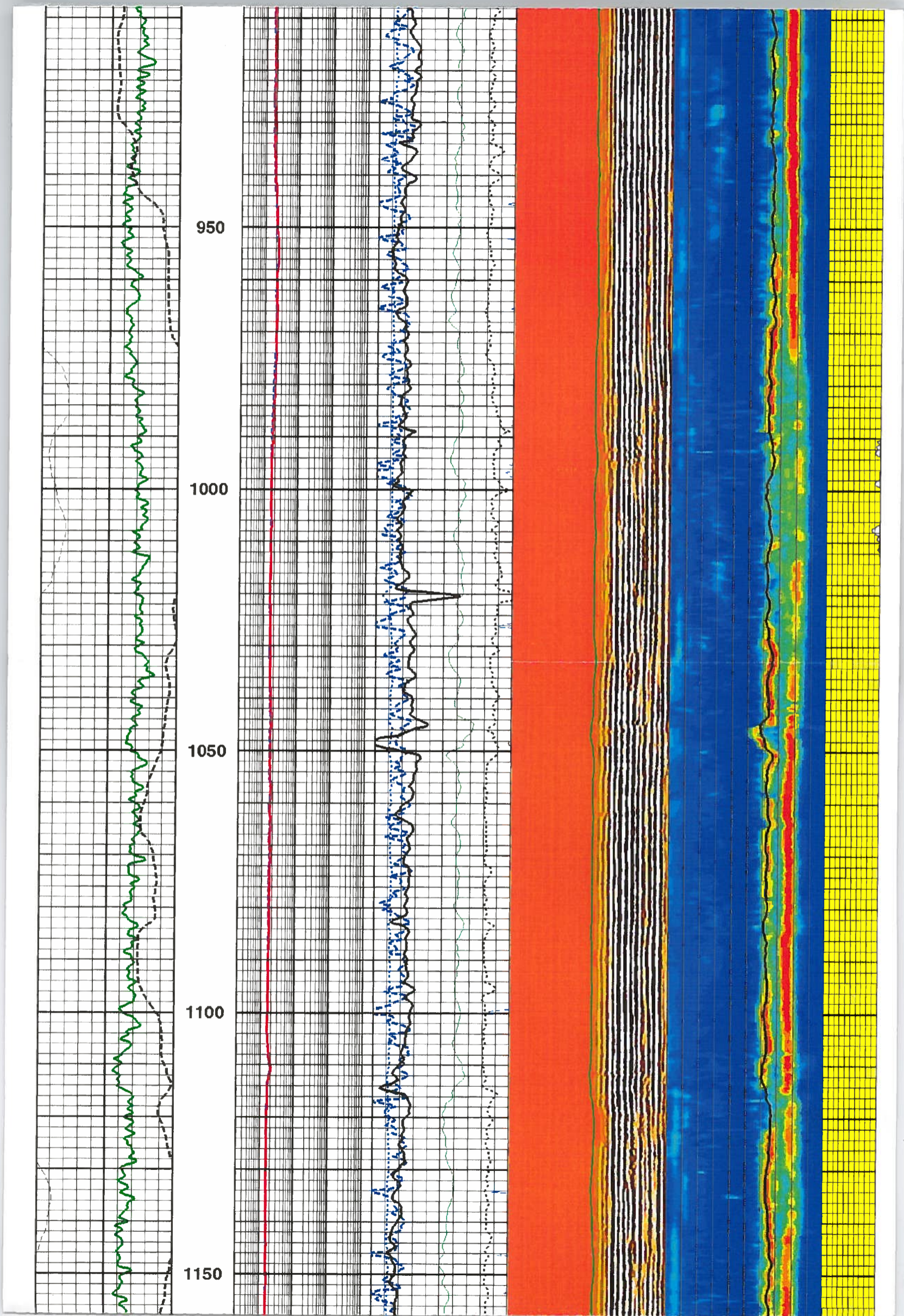
Date Logged	26-JUL-2013
Date Processed	27-JUL-2013
Bottom Depth Logger	5065 ft
Top Depth Logger	886 ft
Casing Driller	885 ft
Bit Size	7.875 in
Mud Type / Mud Weight	WBM / 9.8 lbm/gal
Bottom Hole Temp	176 deg F
API Number	11-075-20021
Kelly Bushing	2207 ft
Drill Floor	2206 ft
Ground Level	2187 ft

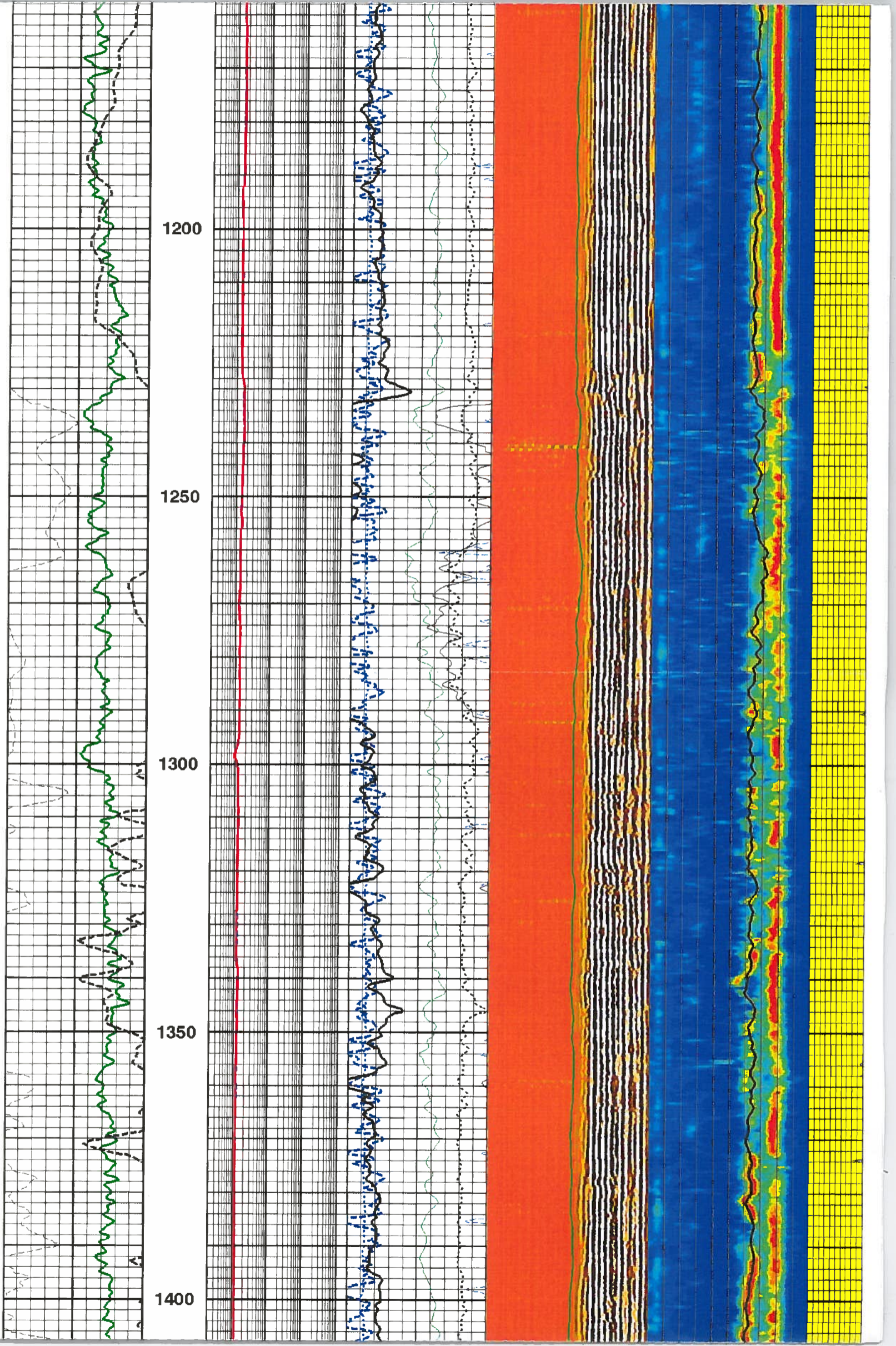
FOLD HERE The well name, location and borehole reference data were furnished by the customer

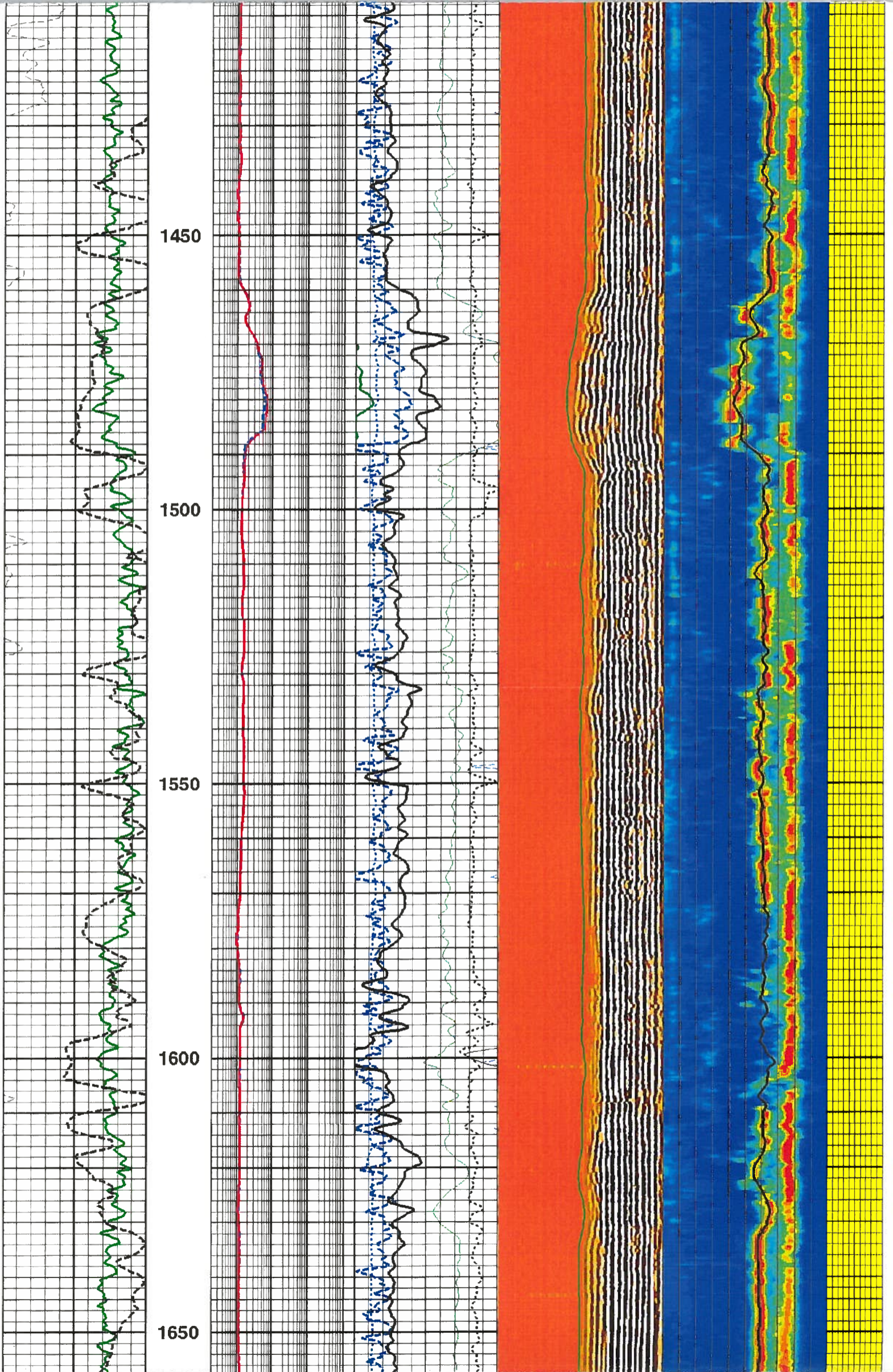
Any interpretation, research, analysis, data, results, estimates, or recommendation furnished with the services or otherwise communicated by Schlumberger to the customer at any time in connection with the services are opinions based on inferences from measurements, empirical relationships, and/or assumptions; which, inferences, empirical relationships and/or assumptions are not infallible and with respect to which professionals in the industry may differ. Accordingly, Schlumberger cannot and does not warrant the accuracy, correctness, or completeness of any such interpretation, research, analysis, data, results, estimates, or recommendation. The customer acknowledges that it is accepting the services "as is," that Schlumberger makes no representation or warranty, express or implied, of any kind or description in respect thereto, and that such services are delivered with the explicit understanding and agreement that any action taken based on the services received shall be at its own risk and responsibility, and no claim shall be made against Schlumberger as a consequence thereof.

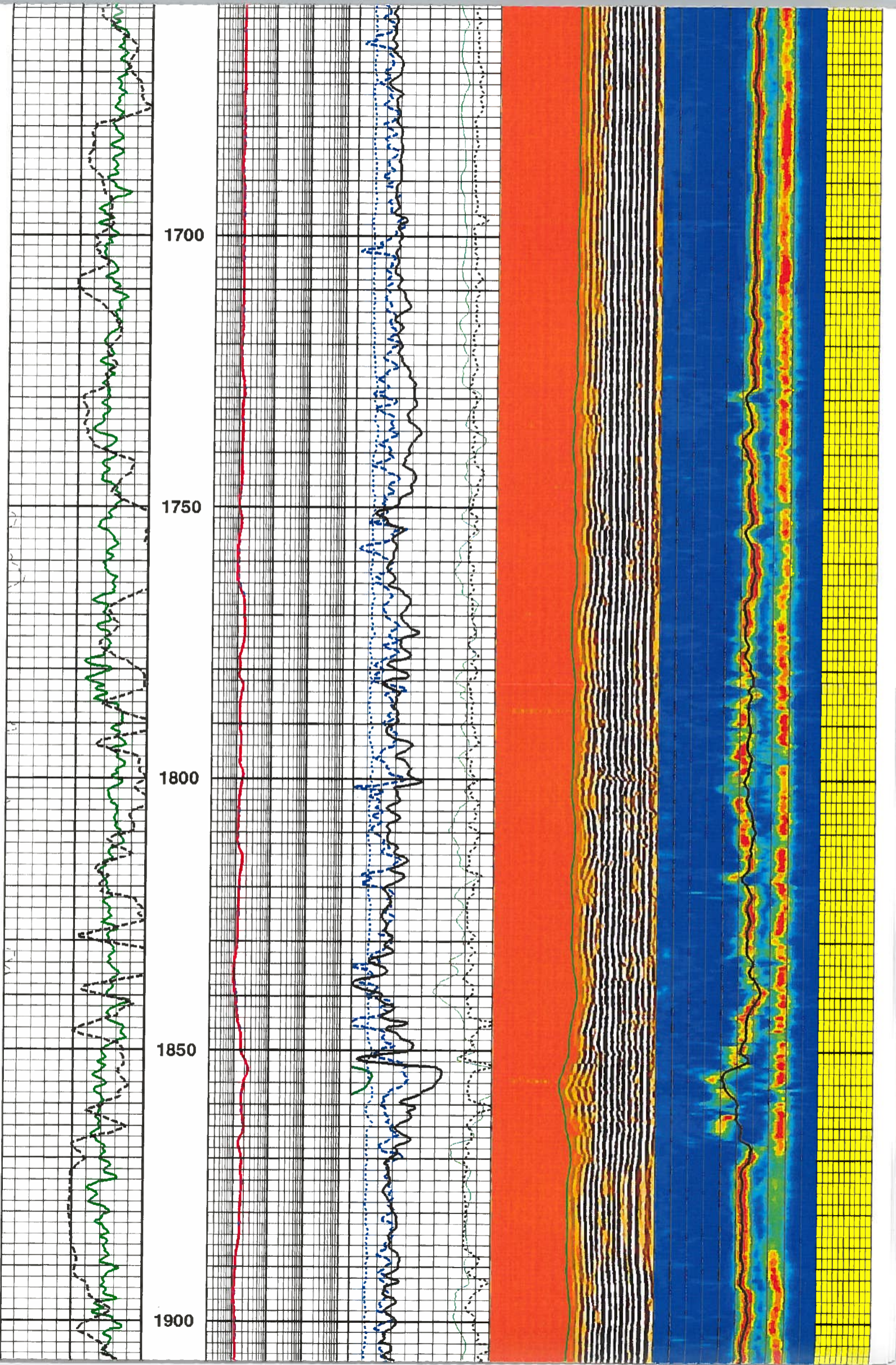
© 2010 Schlumberger. All rights reserved.

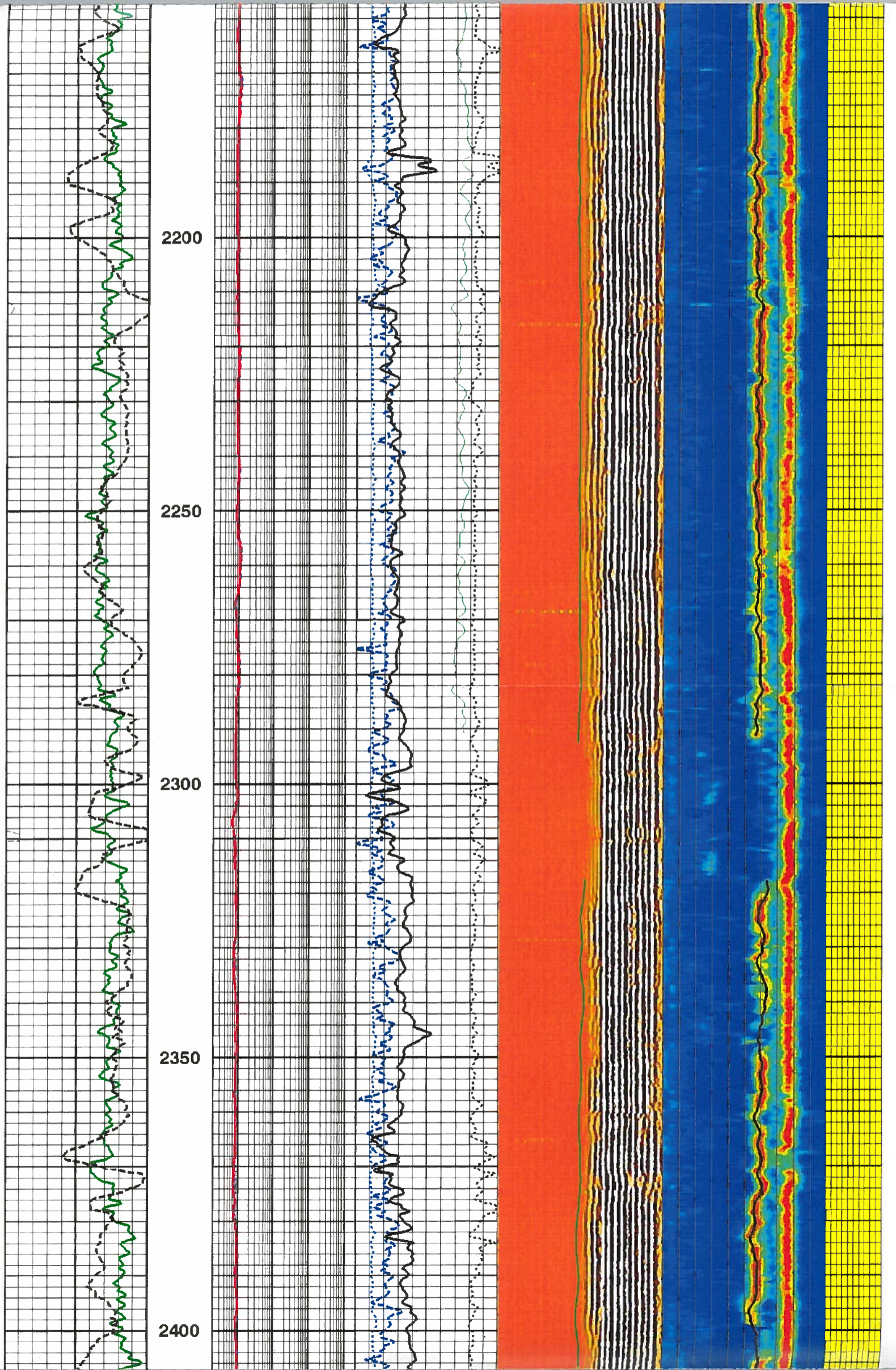


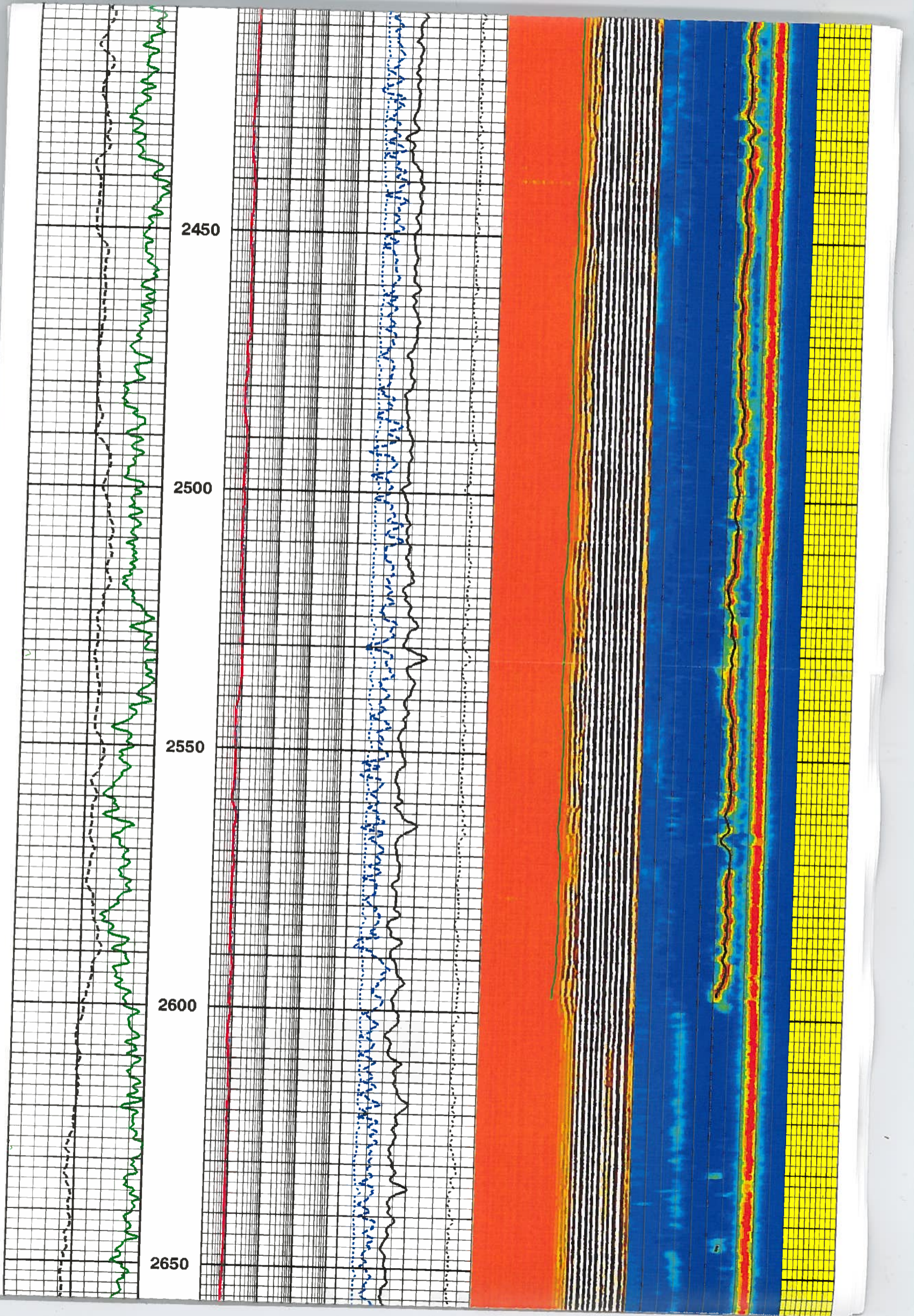


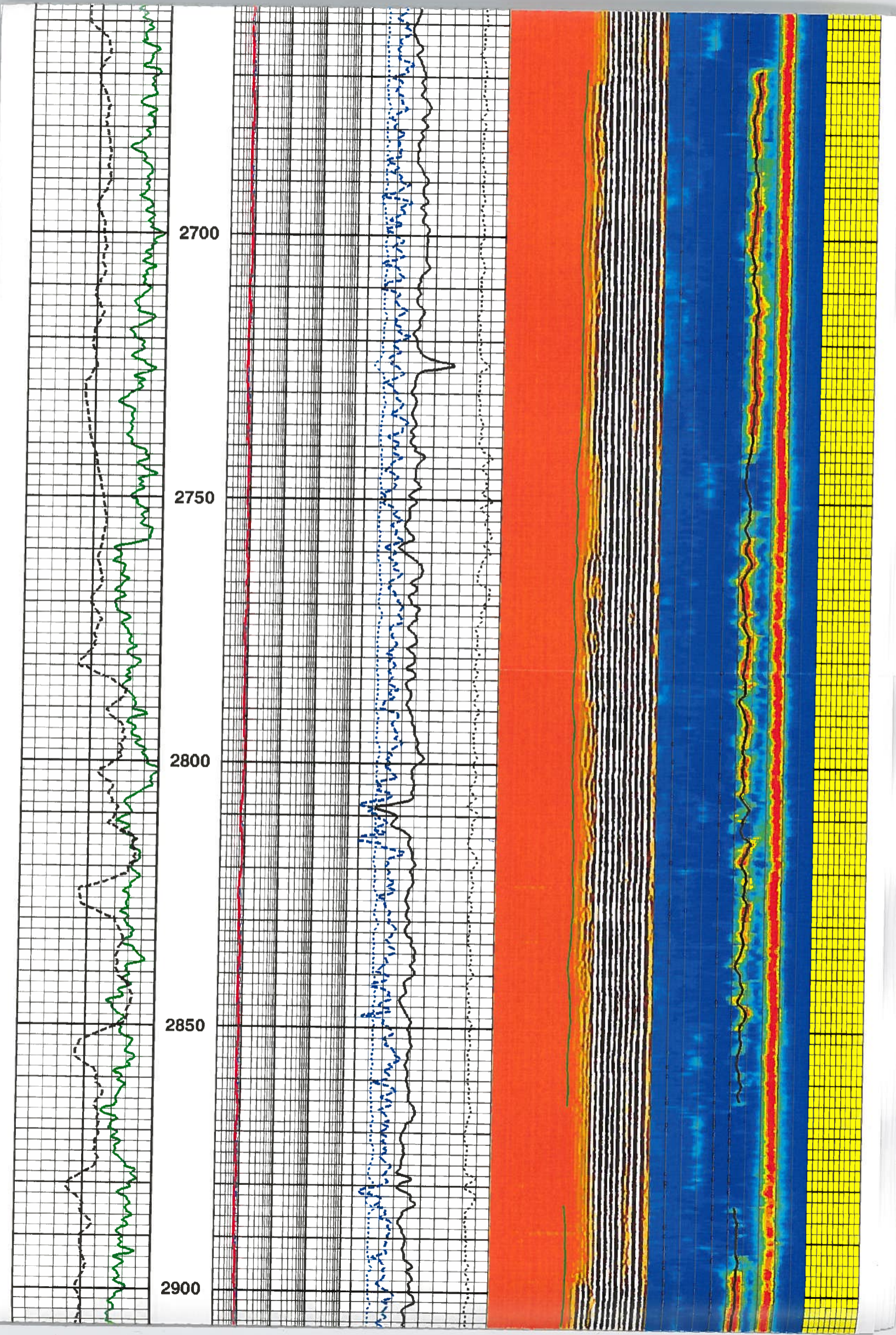


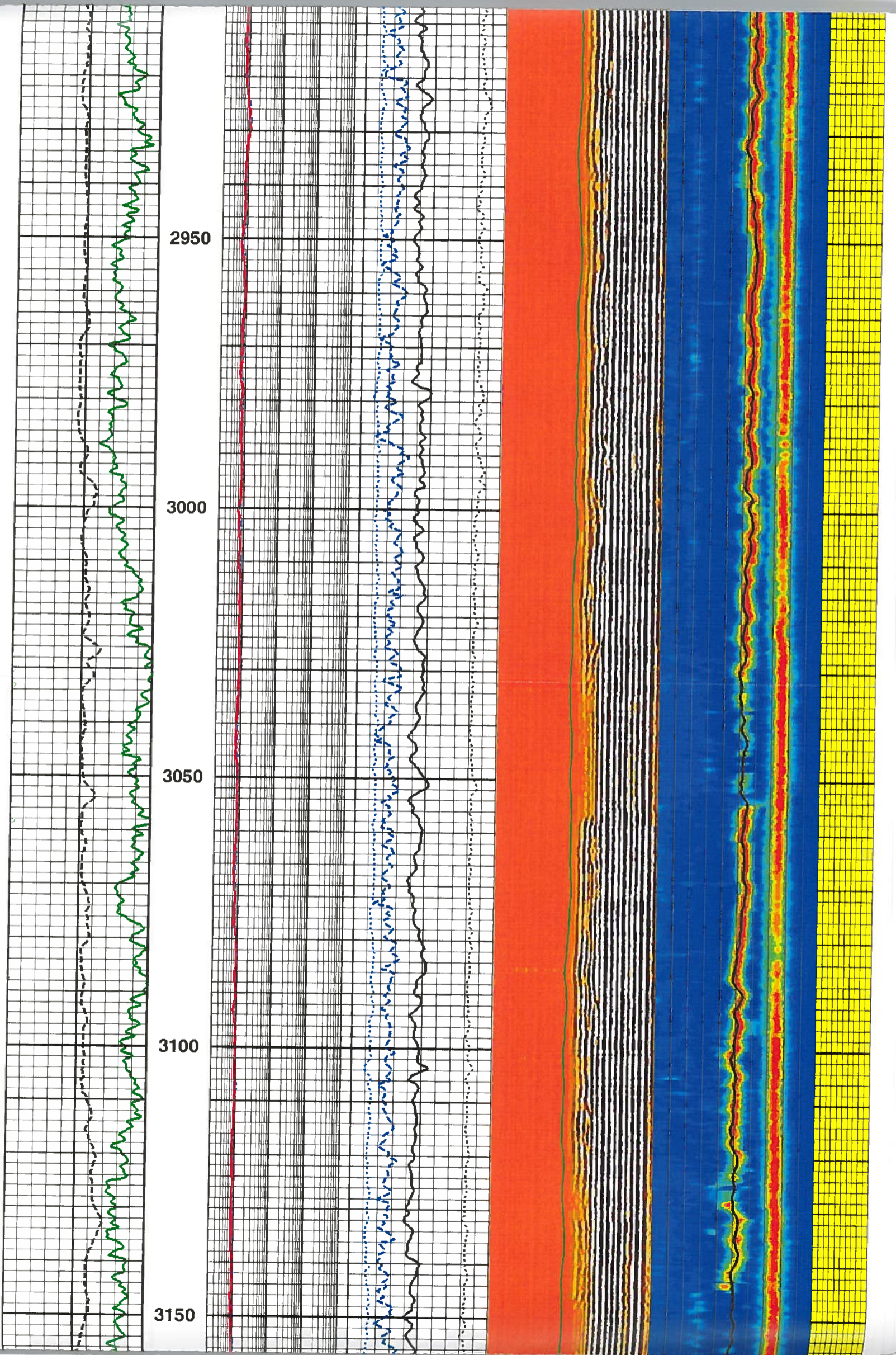


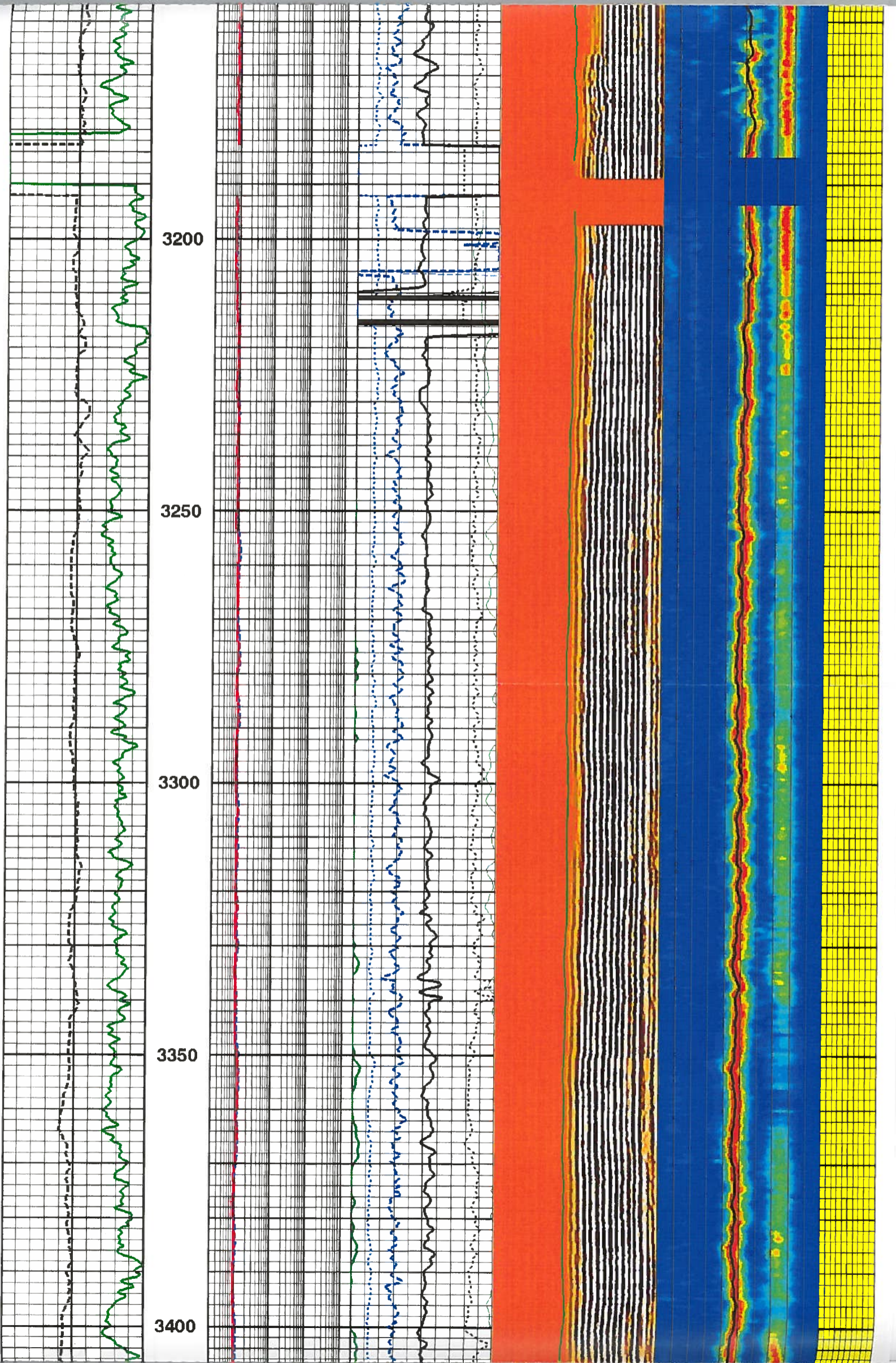


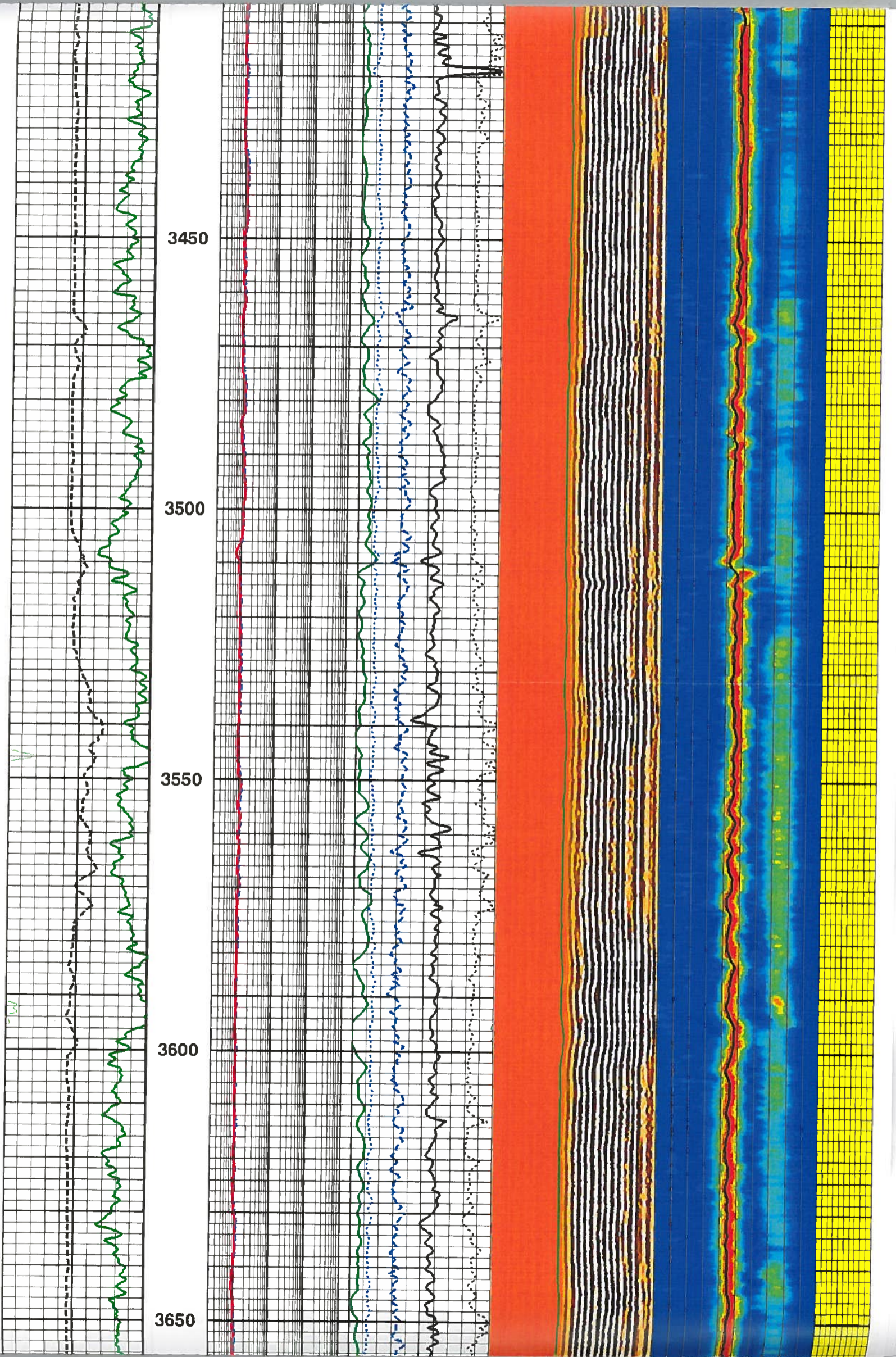


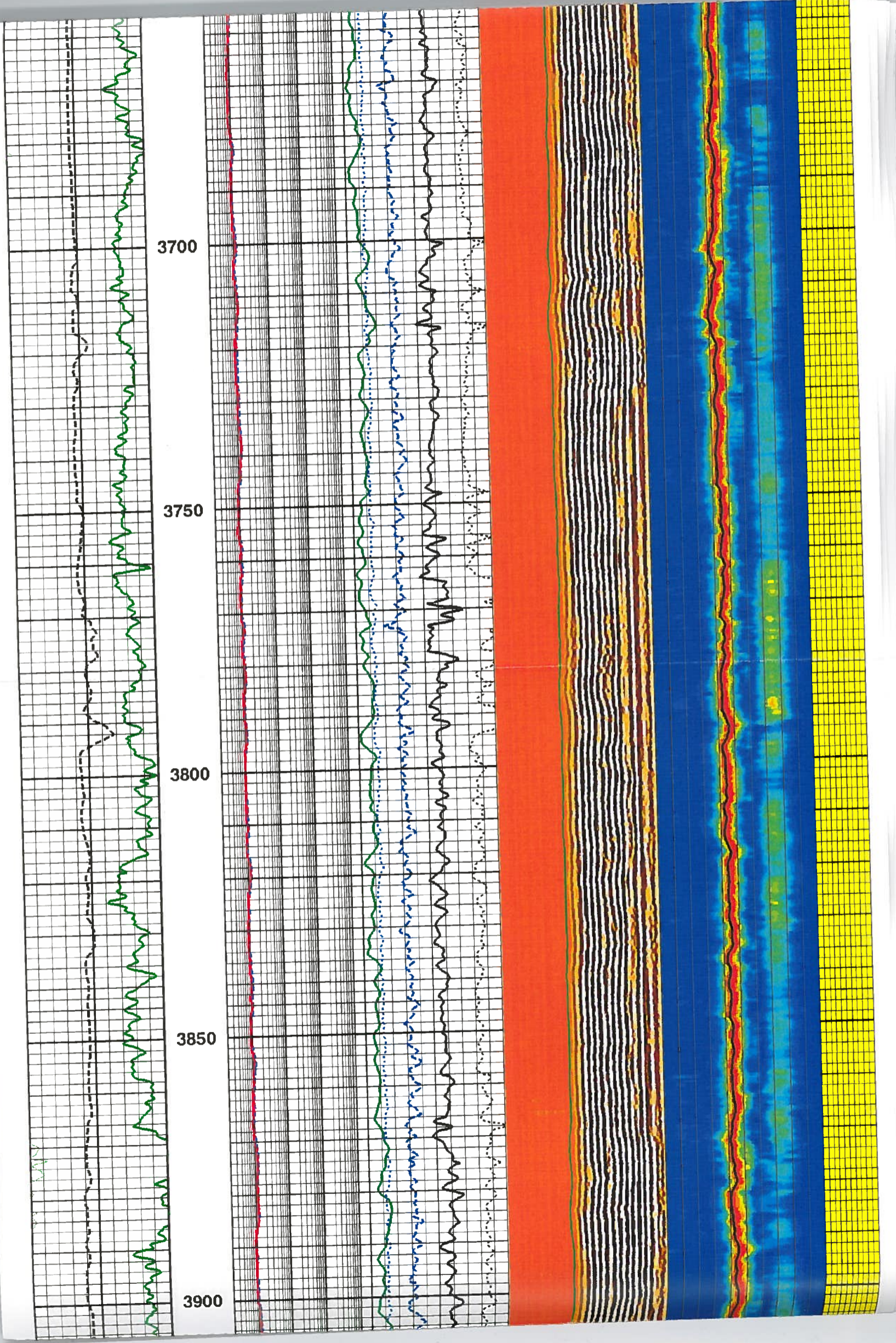


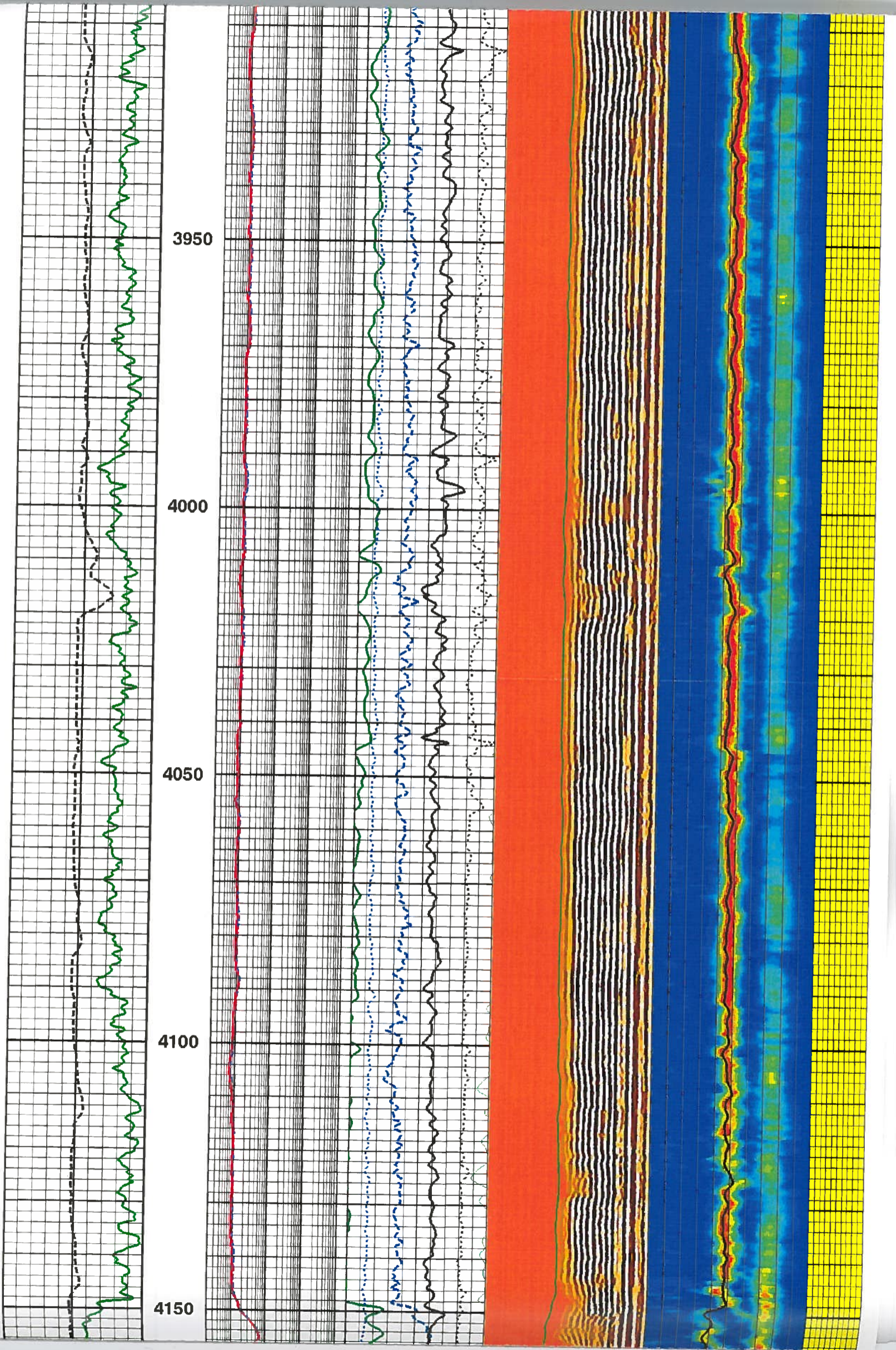


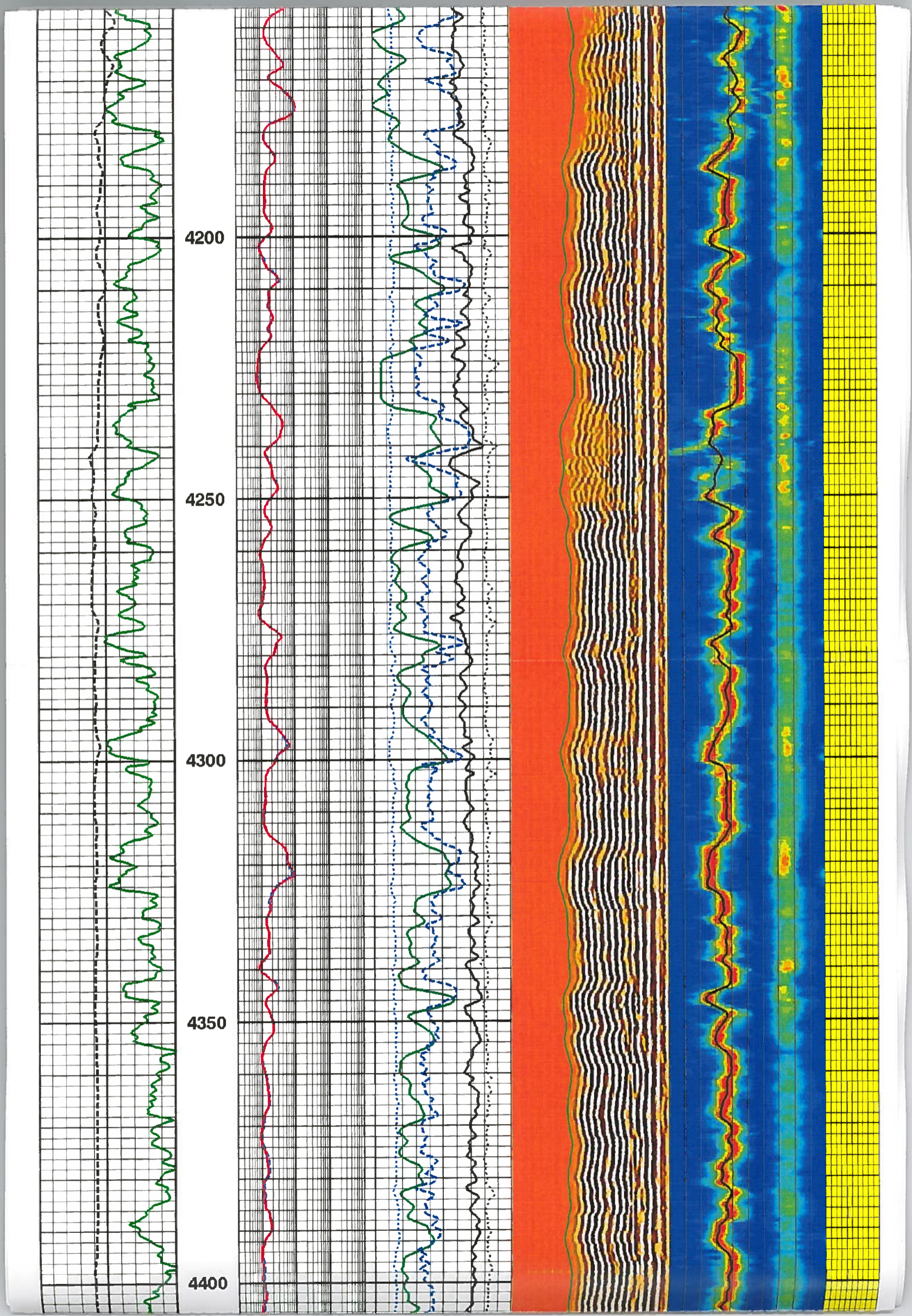


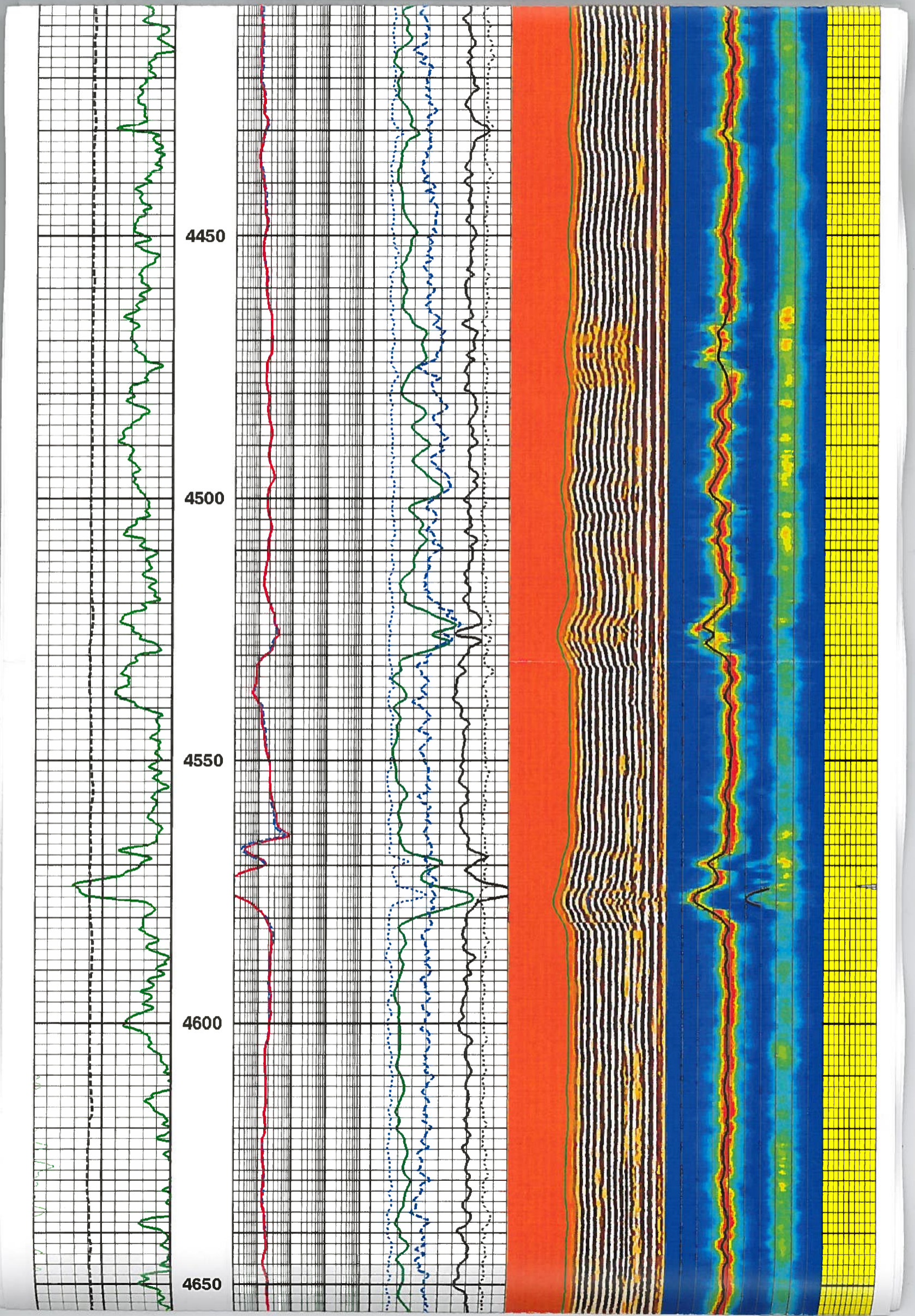


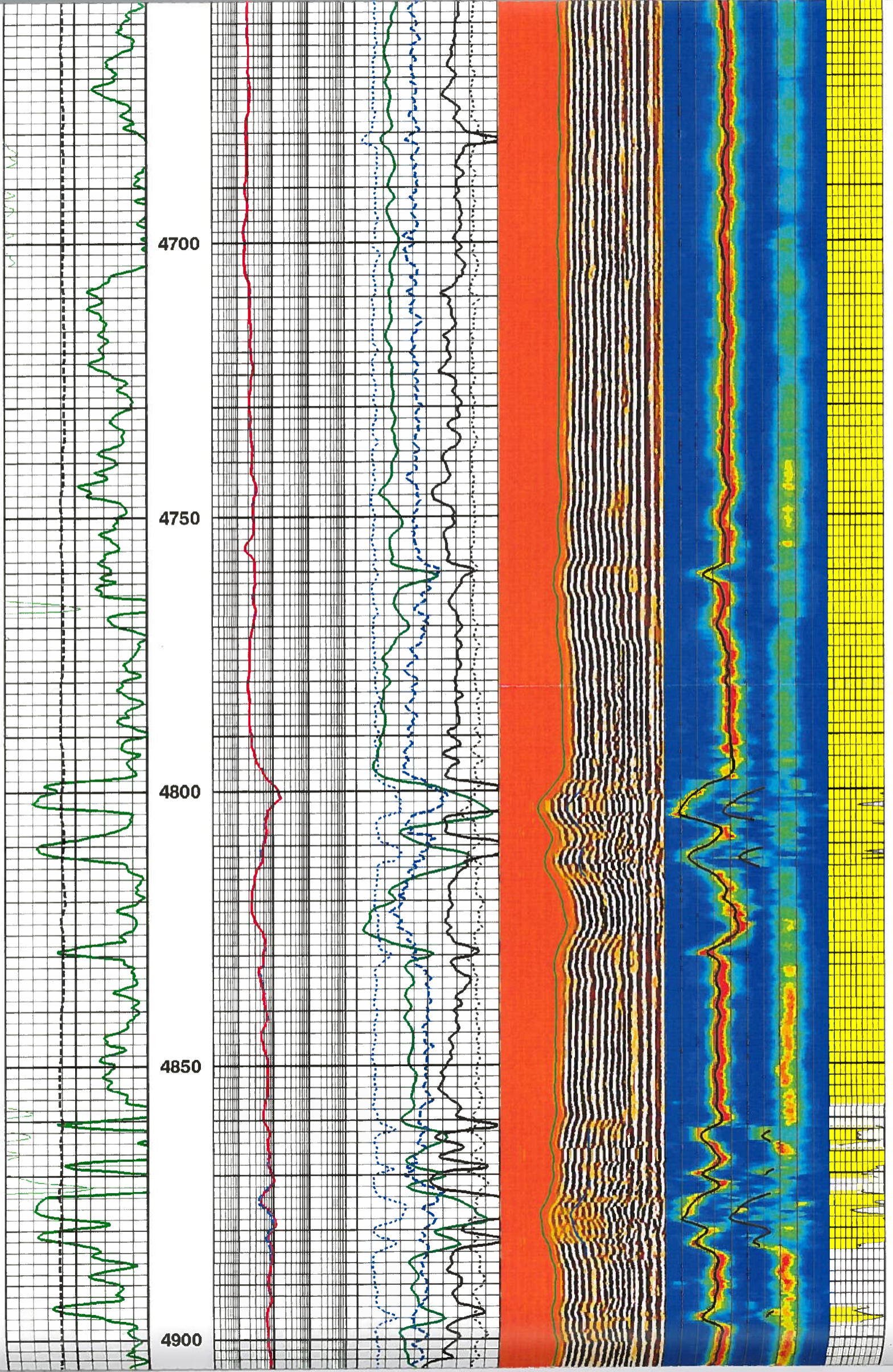


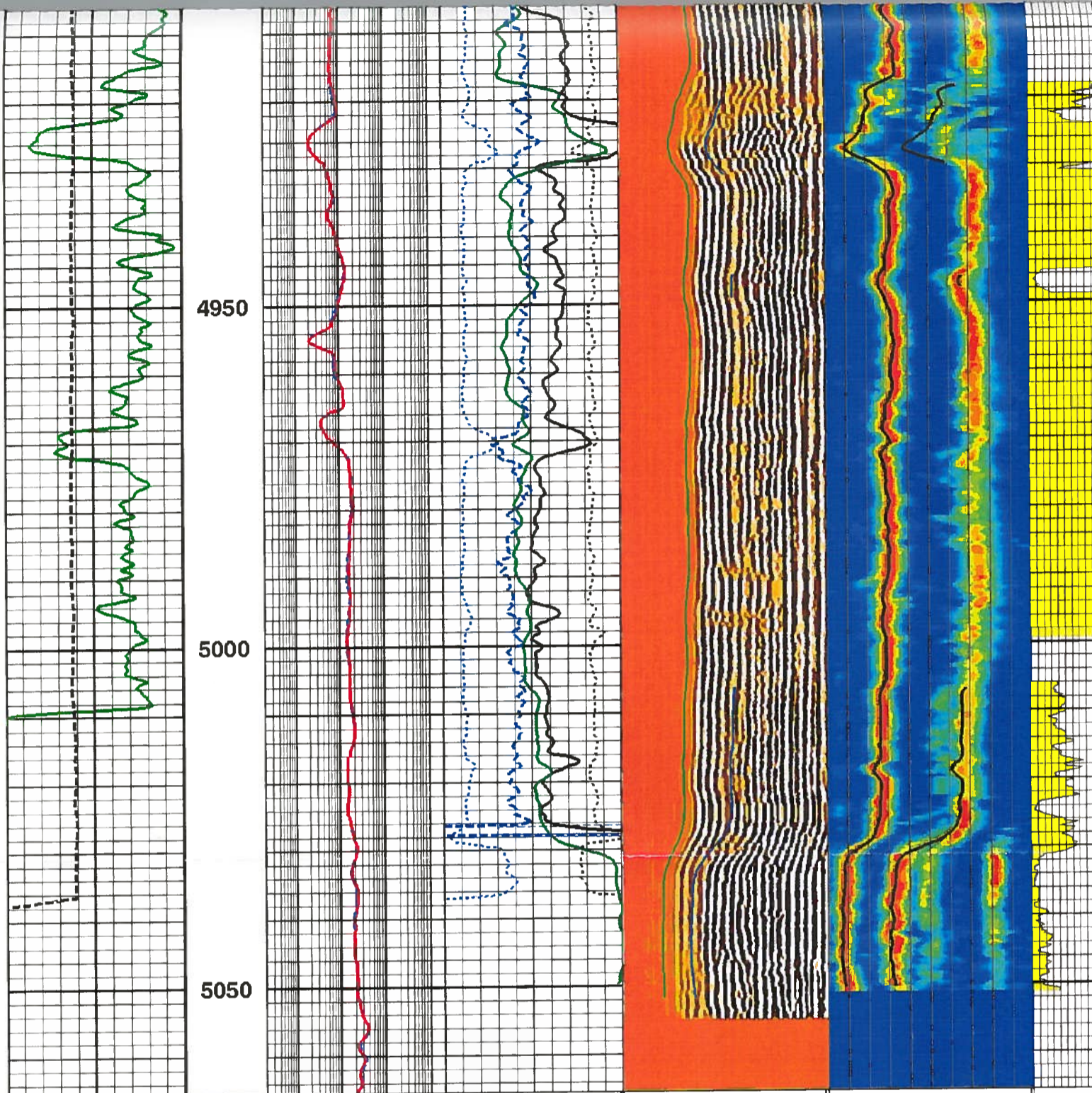












DCAL 4 (in) 14	MD 1 : 240 ft	90IN_2FT_R 0.2 (ohm.m) 2000	Sphi 0.6 (ft ³ /ft ³) 0	TISH WF3 REC 0 (us) 2040	DTRS 40 (us/ft) 240	CHRS 1 (0.5)
GR 0 (gAPI) 150		60IN_2FT_R 0.2 (ohm.m) 2000	DPHI 0.6 (ft ³ /ft ³) 0	TICO WF3 REC 0 (us) 2040	DTRP 40 (us/ft) 240	lgp_
			CNPOR 0.6 (ft ³ /ft ³) 0	SWF3@BestDT-3; 0 (us) 2040	SPR4@BestDT-3; 40 (us/ft) 240	
			DRHO -0.75 (g/cm ³) 0.25			
			PEF 0 () 20			

DEPT. OF LANDS
2013 SEP 17 PM 3:30
BOISE, IDAHO

DEPT. OF LANDS
2013 SEP 17 PM 3:30
BOISE, IDAHO



COMPANY Alta Mesa Services, LP
WELL Smoke Ranch 1-21
FIELD Willow
COUNTY Payette
STATE Idaho

CONFIDENTIAL