



Weatherford®

CEMENT BOND
GAMMA RAY / CCL LOG

COMPANY ALTA MESA SERVICES, LP
WELL SMOKE RANCH LLLP 1-21
FIELDWILLOW
CNTY PAYETTE STATE ID

COMPANY ALTA MESA SERVICE, LP
WELL SMOKE RANCH LLLP 1-21
FIELD WILLOW
COUNTY PAYETTE
STATE IDAHO

LOCATION:

OTHER SERVICES:
NONE

PERM. DATUM GROUND LEVEL
LOG MEASURED FROM K.B. 20 FT. ABOVE PERMANENT DATUM
DRILLING MEASURED FROM K.B.

ELEV. : K.B.
D.F.
G.L.

DATE 14-AUG-2013

RUN NO.

DEPTH DRILLER

DEPTH LOGGER

BTM. LOG INTERVAL

TOP LOG INTERVAL

OPEN HOLE SIZE

TYPE FLUID

DENS.

MAX. REC. TEMP.

EST. CEMENT TOP

TIME WELL READY

TIME LOGGER ON BTM.

EQUIP. NO.

LOCATION

RECORDED BY

WITNESSED BY

BOREHOLE RECORD

TUBING RECORD

RUN NO.

BIT FROM TO

SIZE WGT. FROM TO

CASING RECORD

SURFACE STRING

PROT. STRING

PROD. STRING

LINER

SIZE WT/FT GRADE TYPE JOINT TOP BOTTOM

5.5" 15.5" SURF. 5088'

All interpretations of log data are opinions based on inferences from electrical or other measurements. We do not guarantee the accuracy or correctness of any interpretation or recommendation and we shall not be liable or responsible for any loss, cost, damages or expenses incurred or sustained by anyone resulting from any interpretation or recommendation made by any of our employees or agents.

REMARKS Rig: CRANE Service Order # 202063
LOG WAS NOT CORRELATED. LOG WAS RUN FROM WIRELINE DEPTH ONLY
ALL LOGGED INTERVALS PER CUSTOMER REQUEST

EQUIPMENT DATA

Run No.	Tool Type	Tool No.	Other
ONE	CENA	217	
ONE	CTBA	237	
ONE	GRBA	233	
ONE	CENB	152	
ONE	SBTA	238	
ONE	CENA	240	

REMARKS

LOGGED WITH 1500 PSI

DEPTH SCALE: 5":100'

PROCESSED VERSION: 2012.07.18.162"

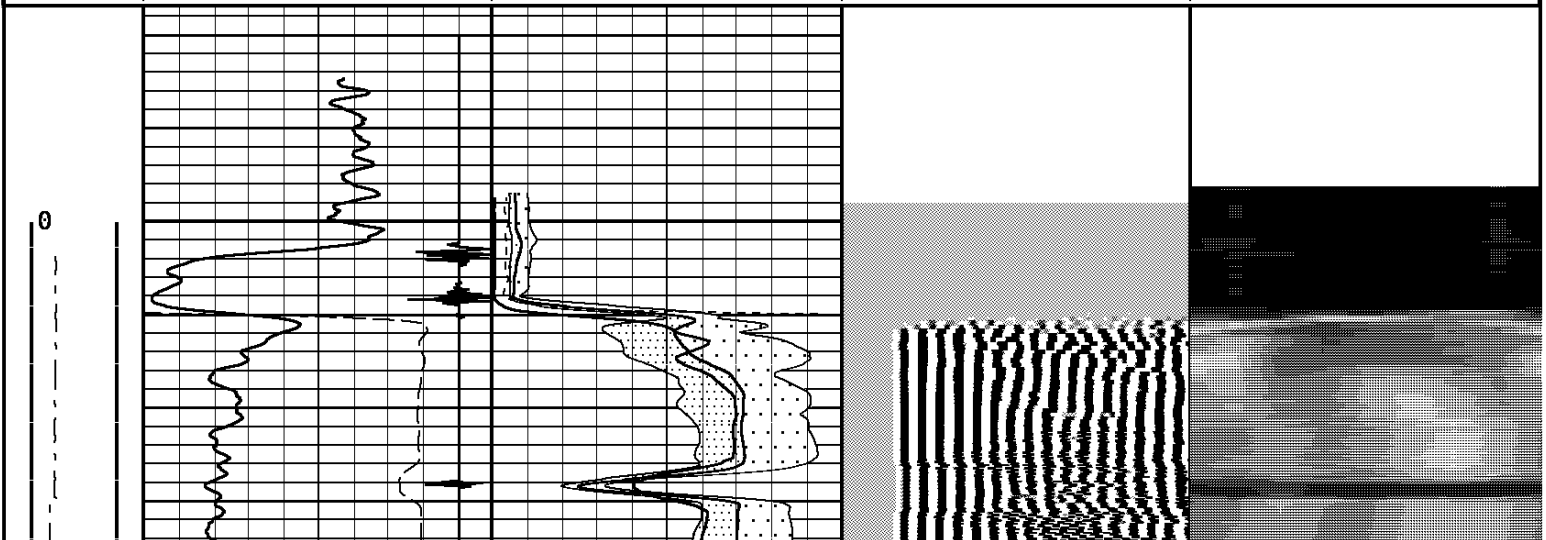
MAIN PASS

202063 CBLMAINPSI

FINISH DEPTH: -27.3 Feet DIRECTION: UP DATE: 08/14/2013 TIME: 16:55 MODE: TRACE PLAYBACK

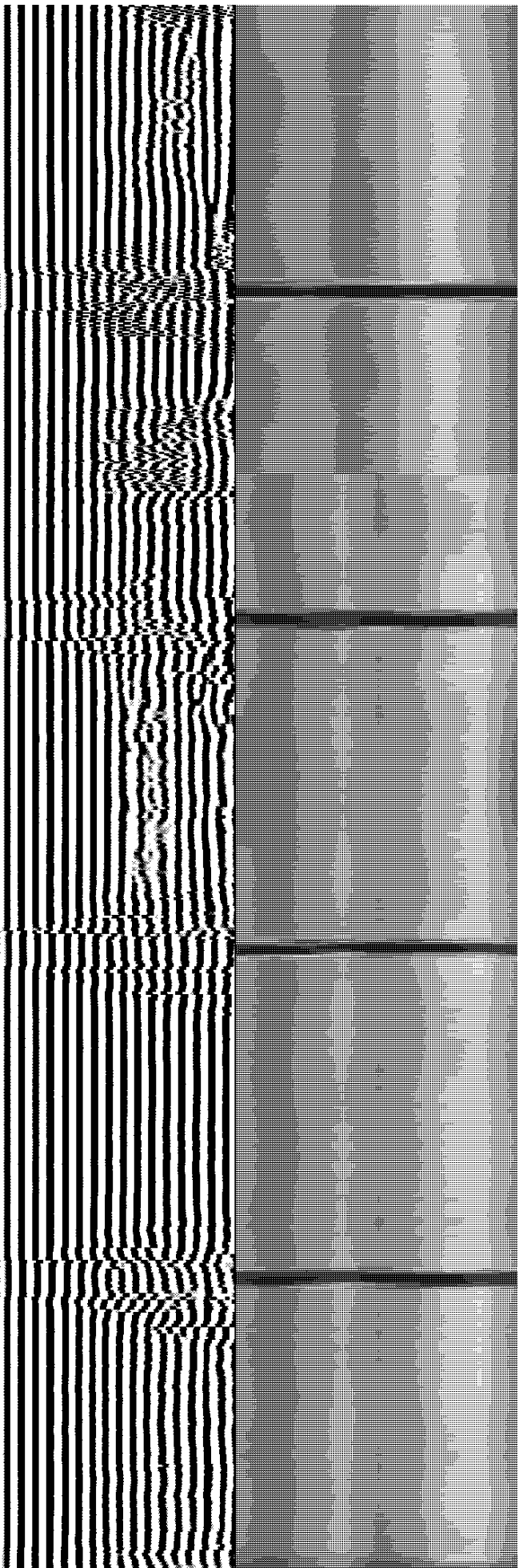
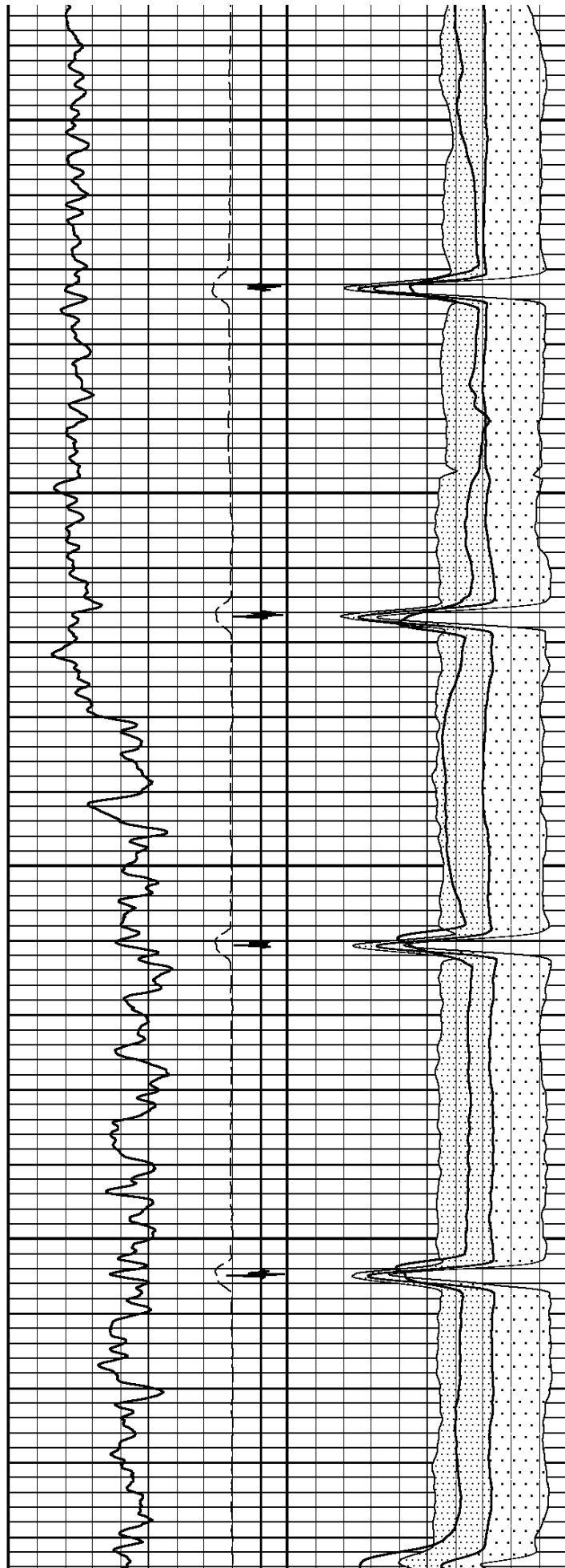
		AMP X 5					

		0 Millivolts		20			
		AMPLITUDE 3FT					
		0 Millivolts		100			
	Collar Locator		MAX ENERGY				
	-8000 Millivolts 800		0 Millivolts	100			
	Gamma Ray		AVG ENERGY				
	0 API 150		0 Millivolts	100			
Tension		TRAVEL TIME 3FT		MIN ENERGY		VARIABLE DENSITY 5FT	VARIABLE ENERGY
0 2000		333 Microseconds 233		0 Millivolts 100		200 Microseconds 1200	0 Millivolts 100



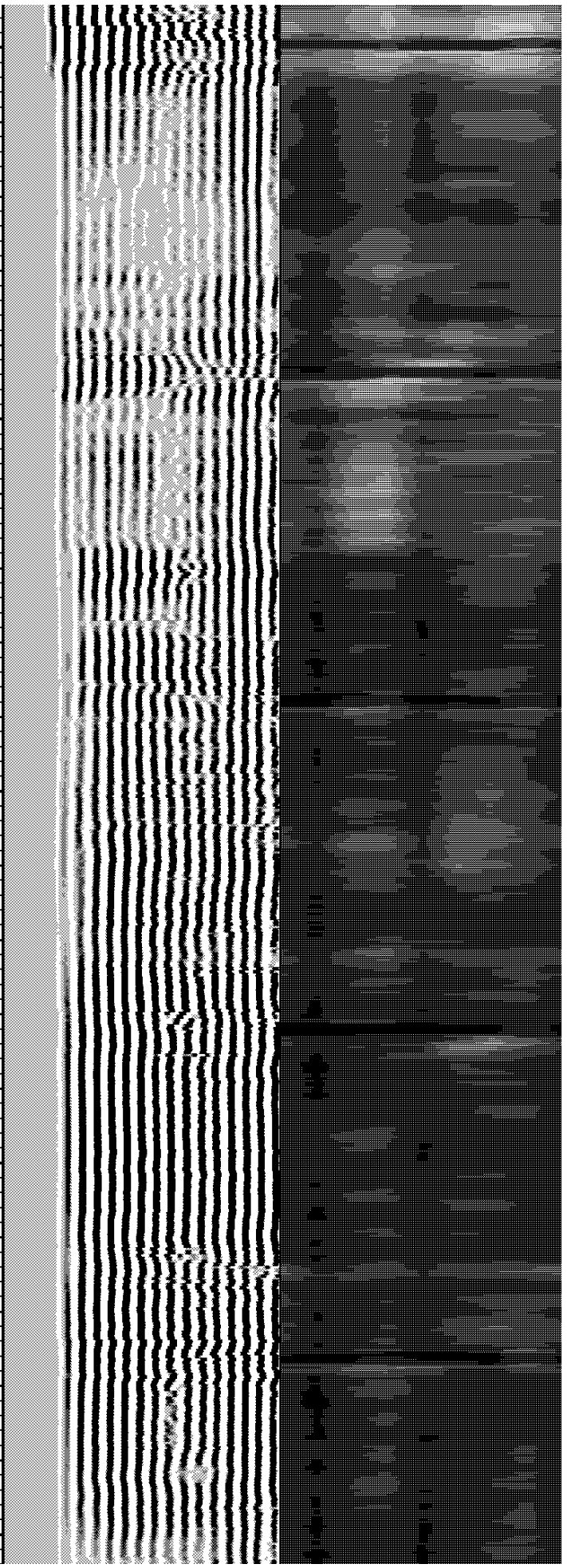
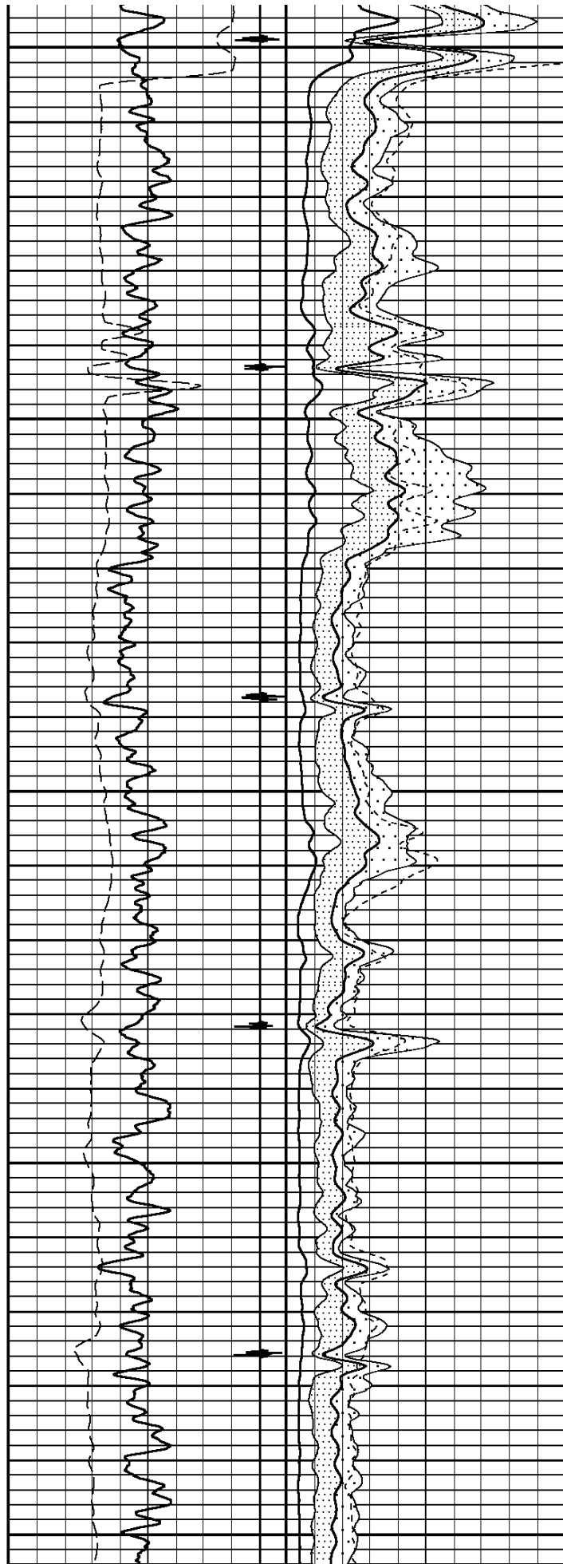
100

200



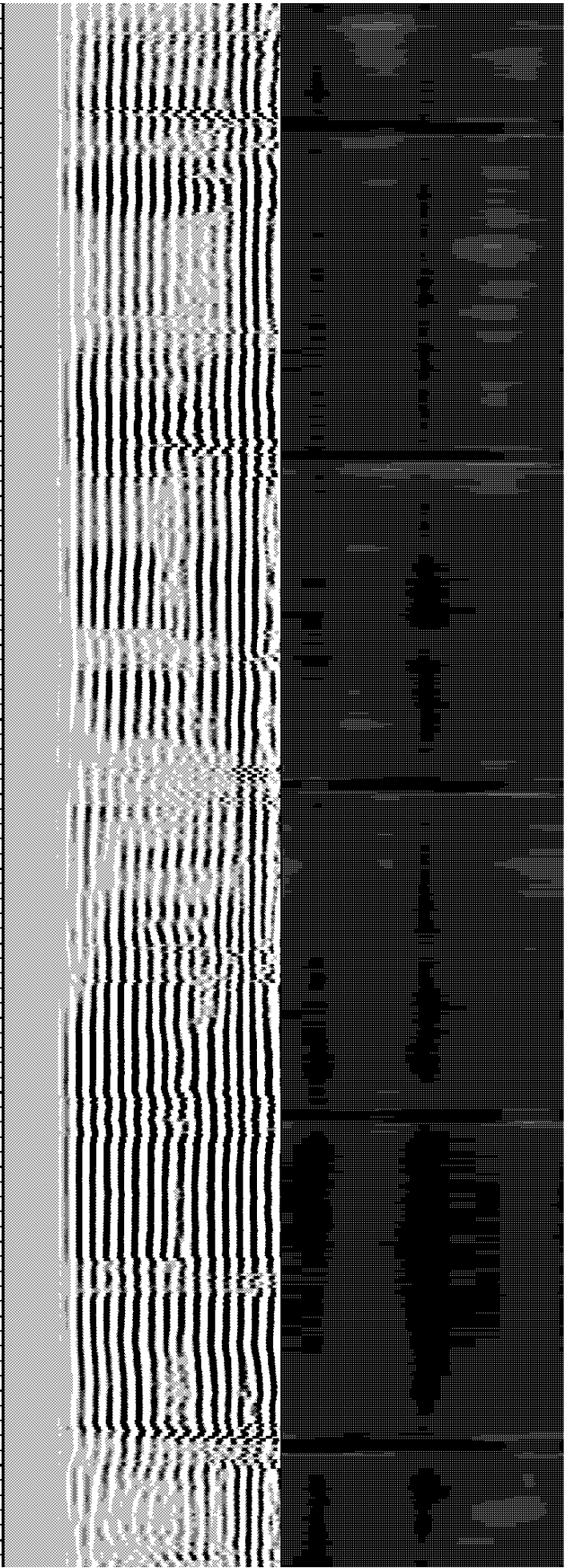
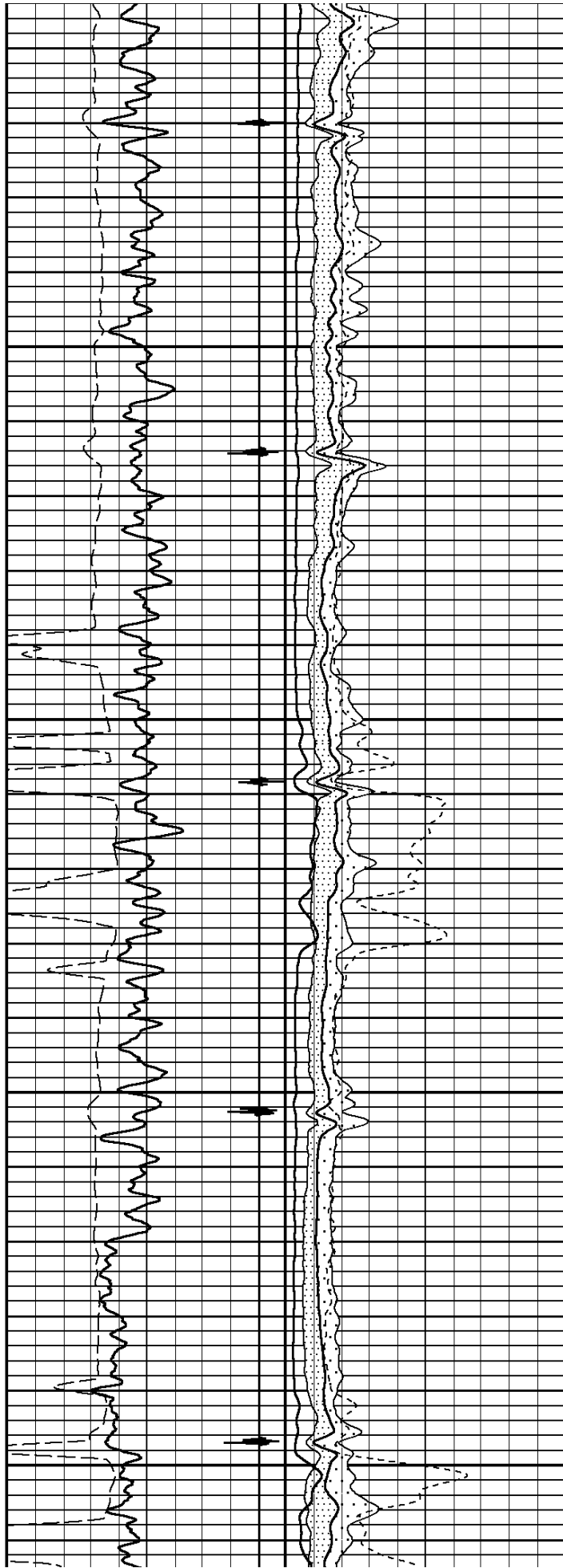
300

400



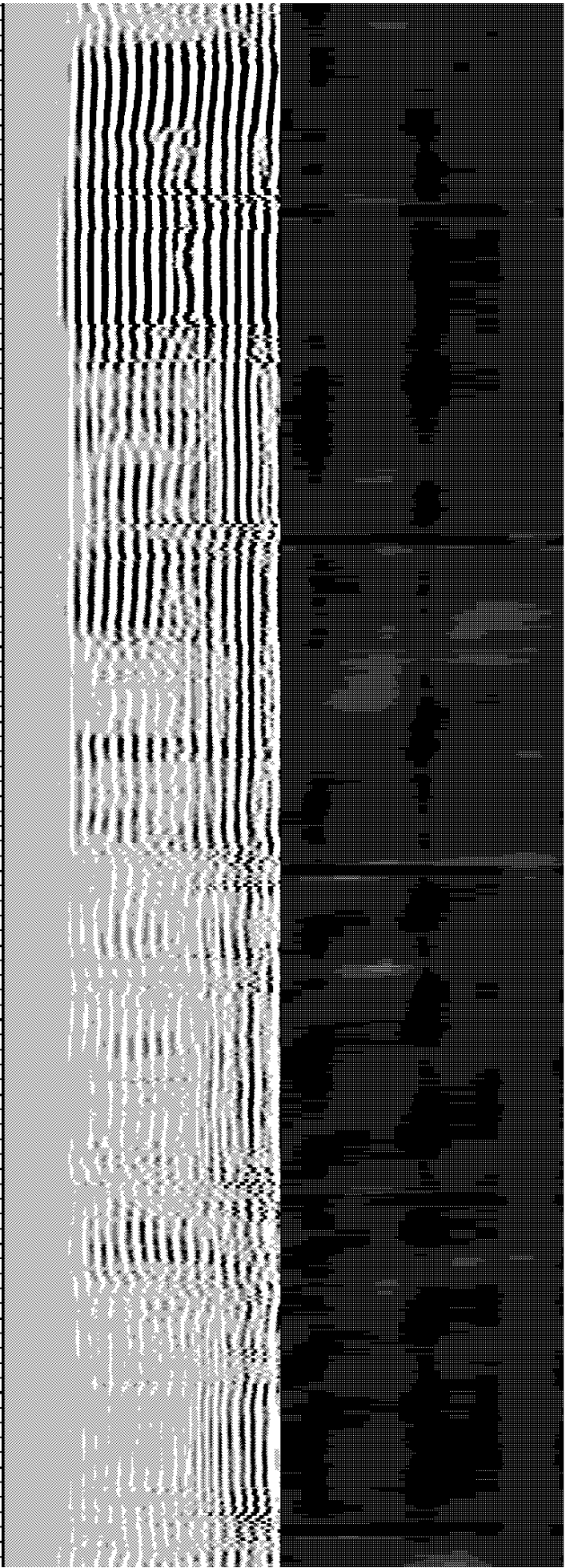
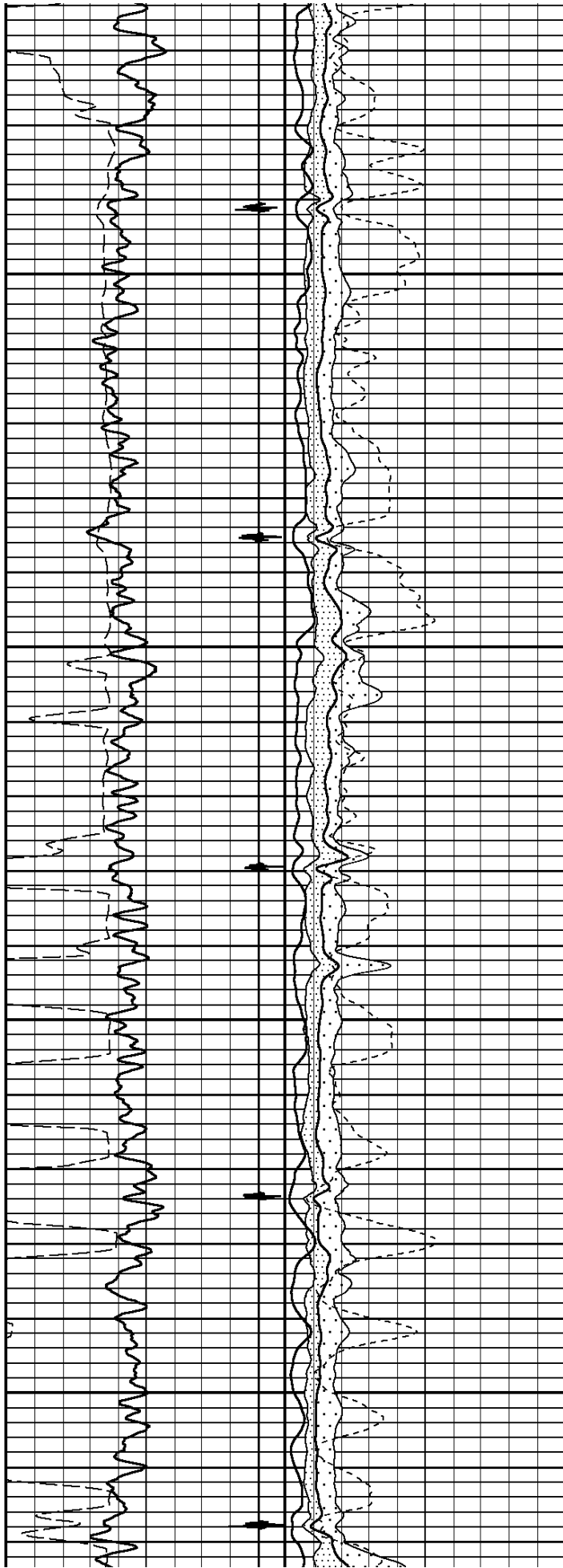
500

600



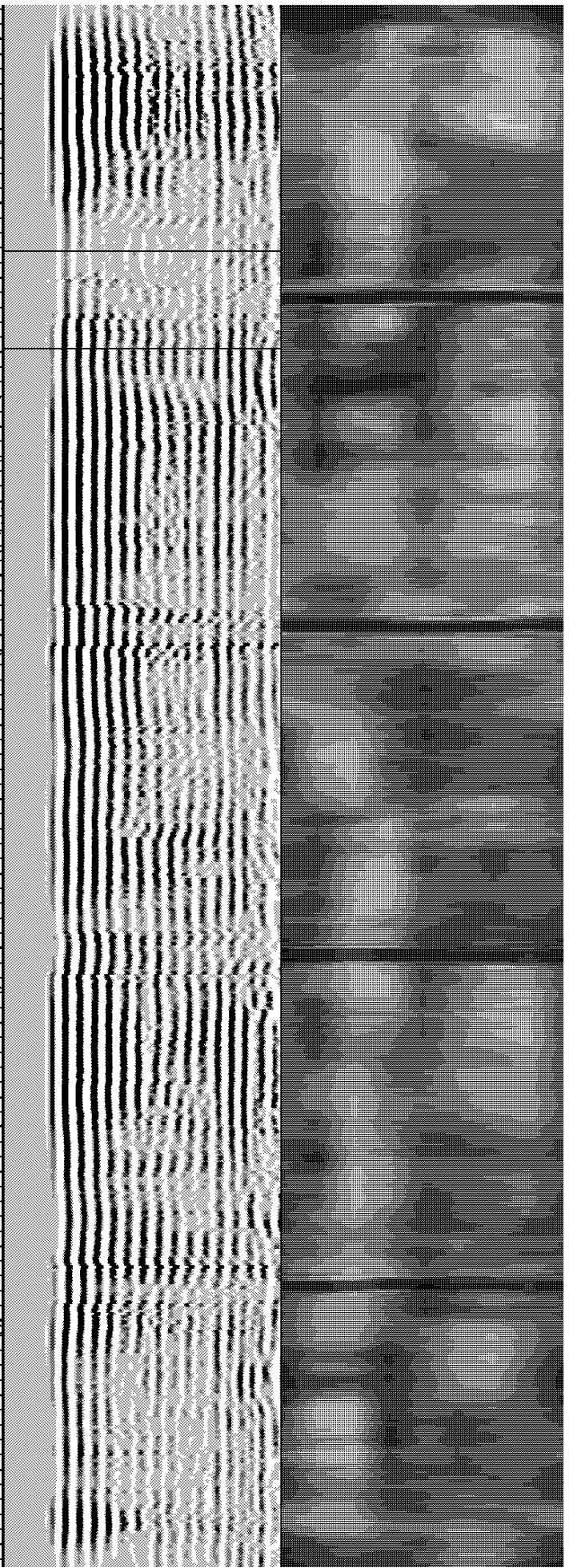
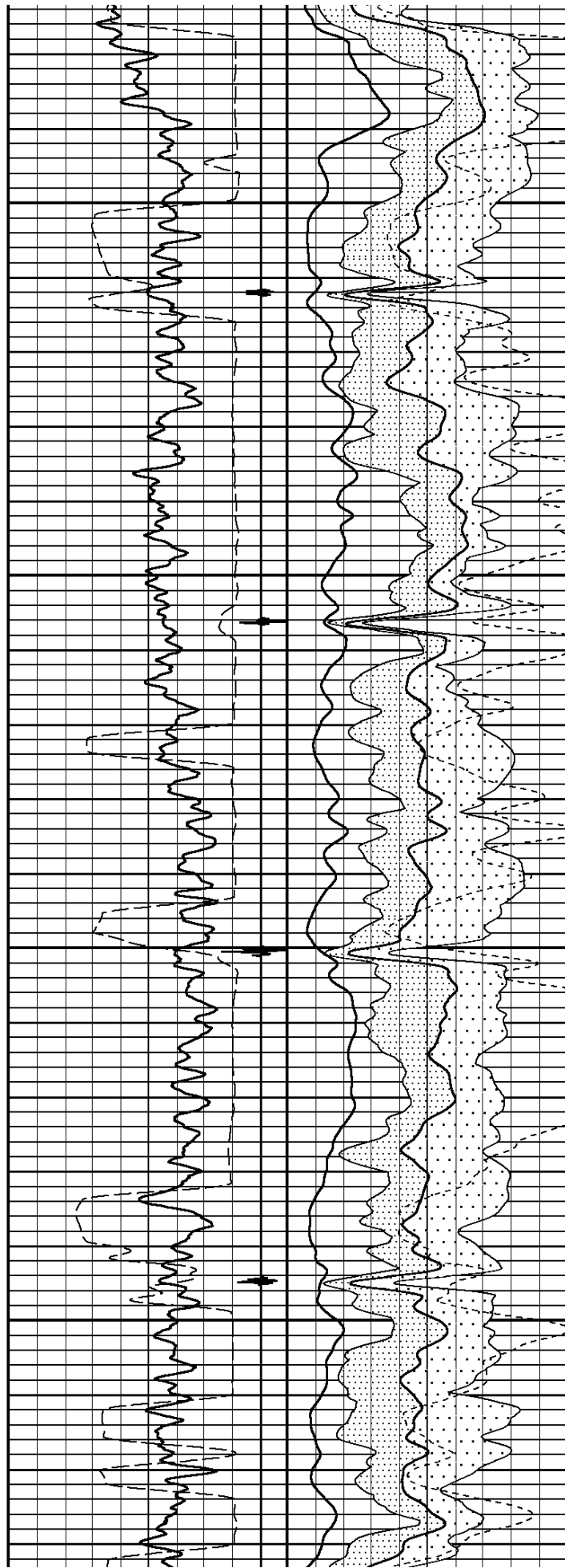
700

800



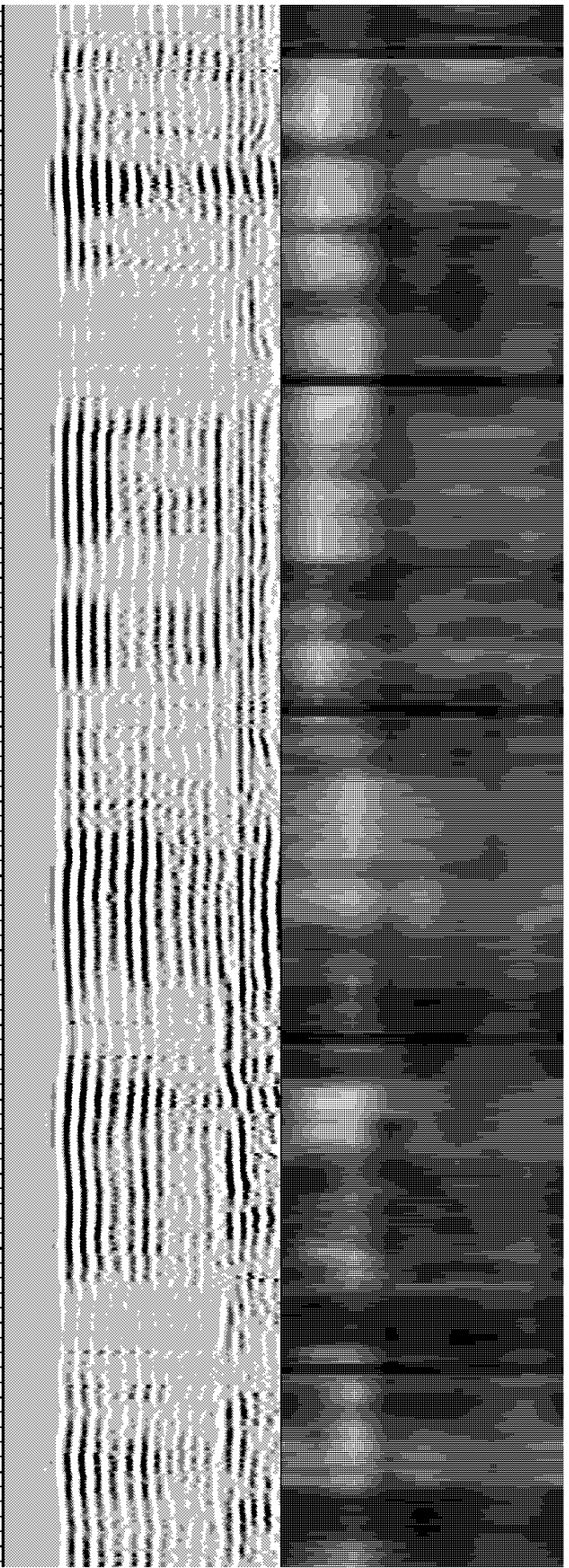
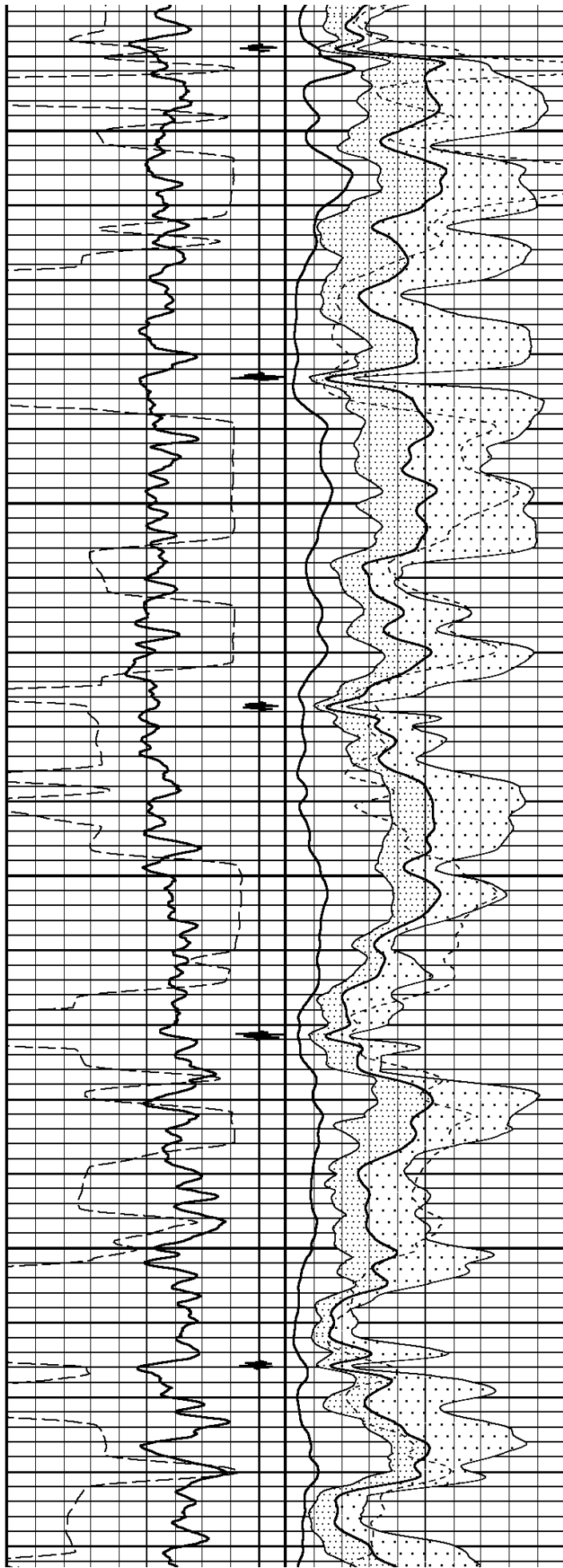
900

1000



1100

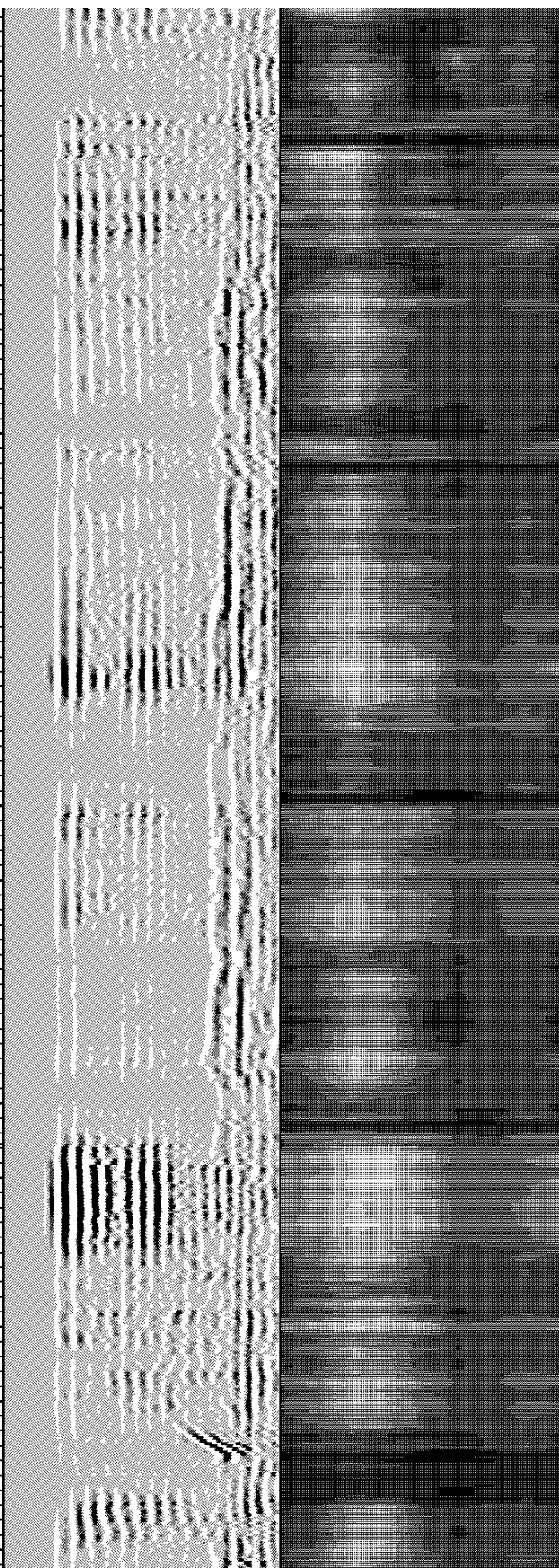
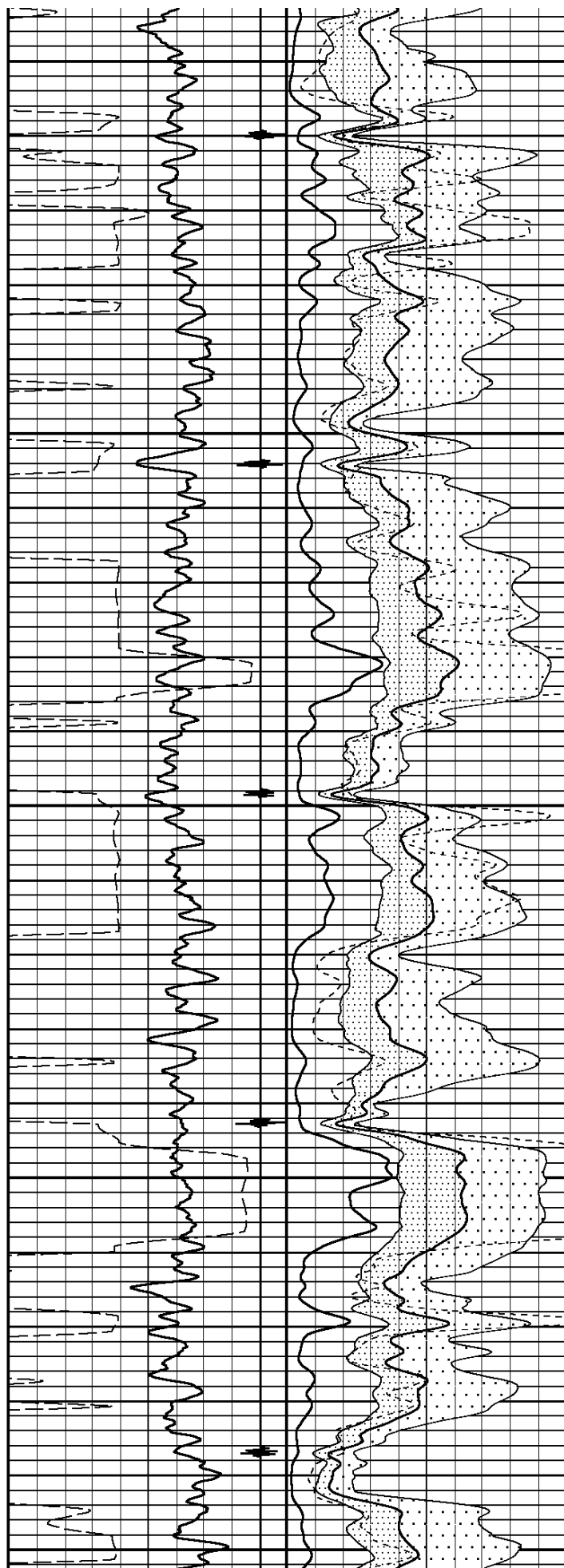
1200



1300

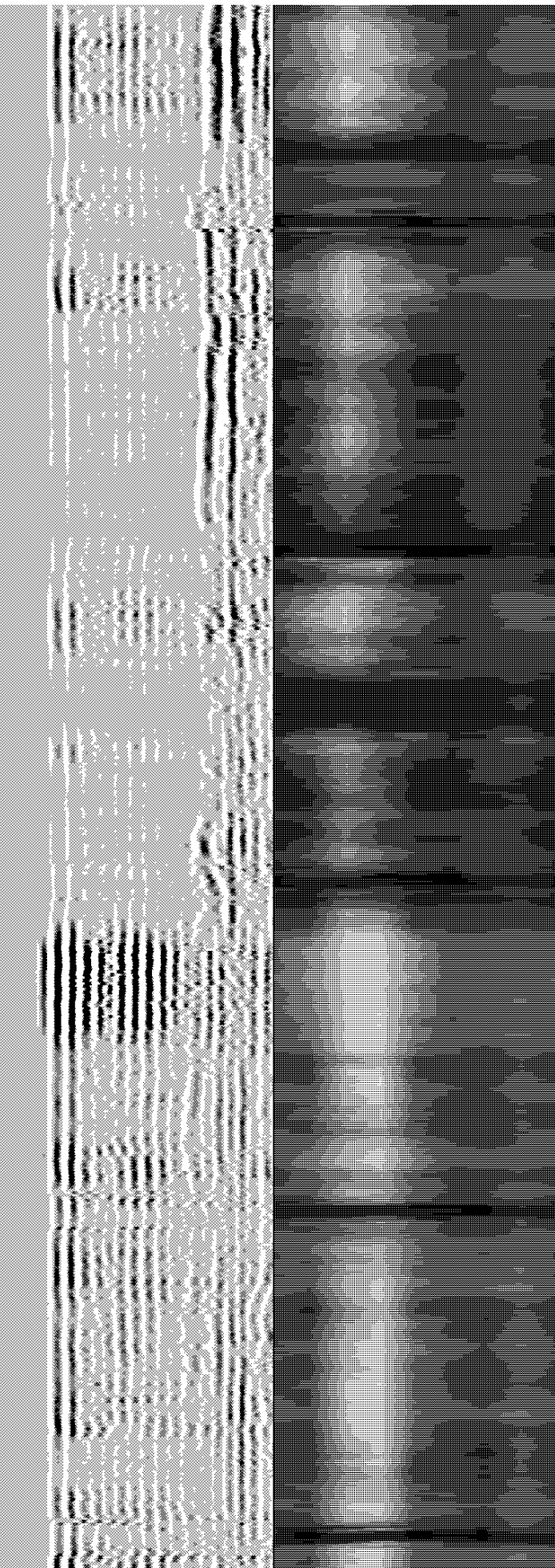
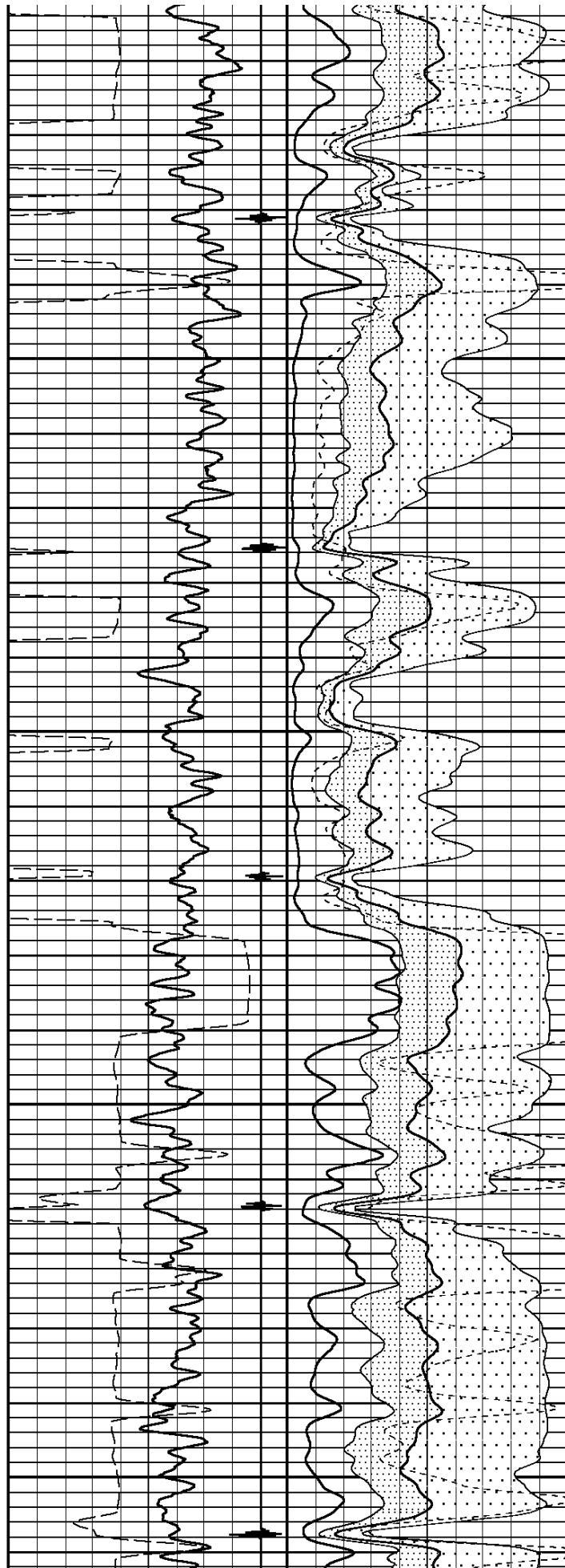
1400

1500



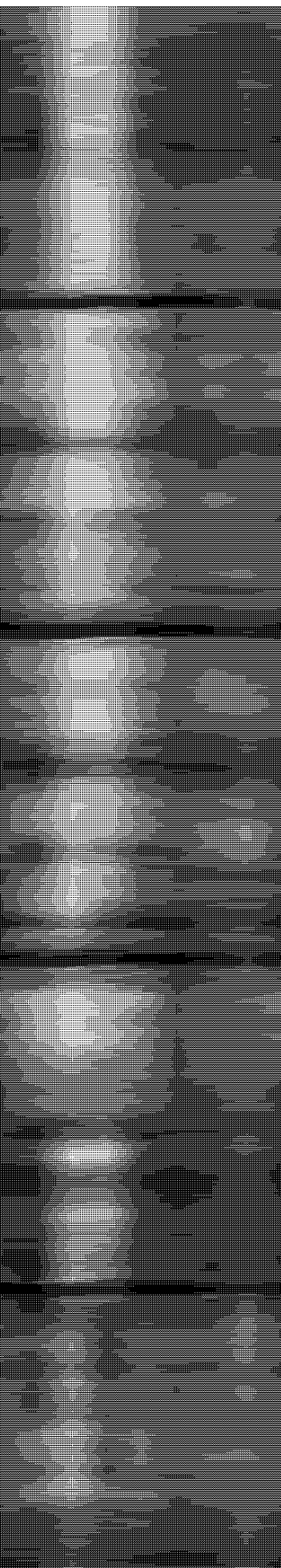
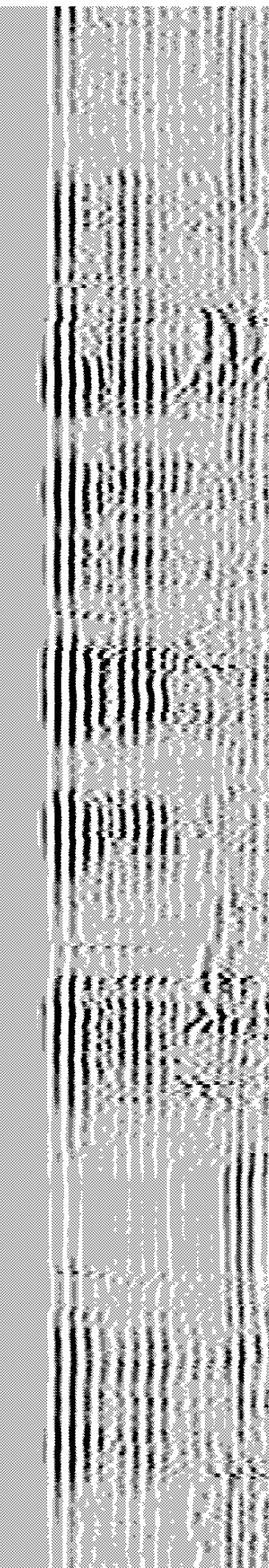
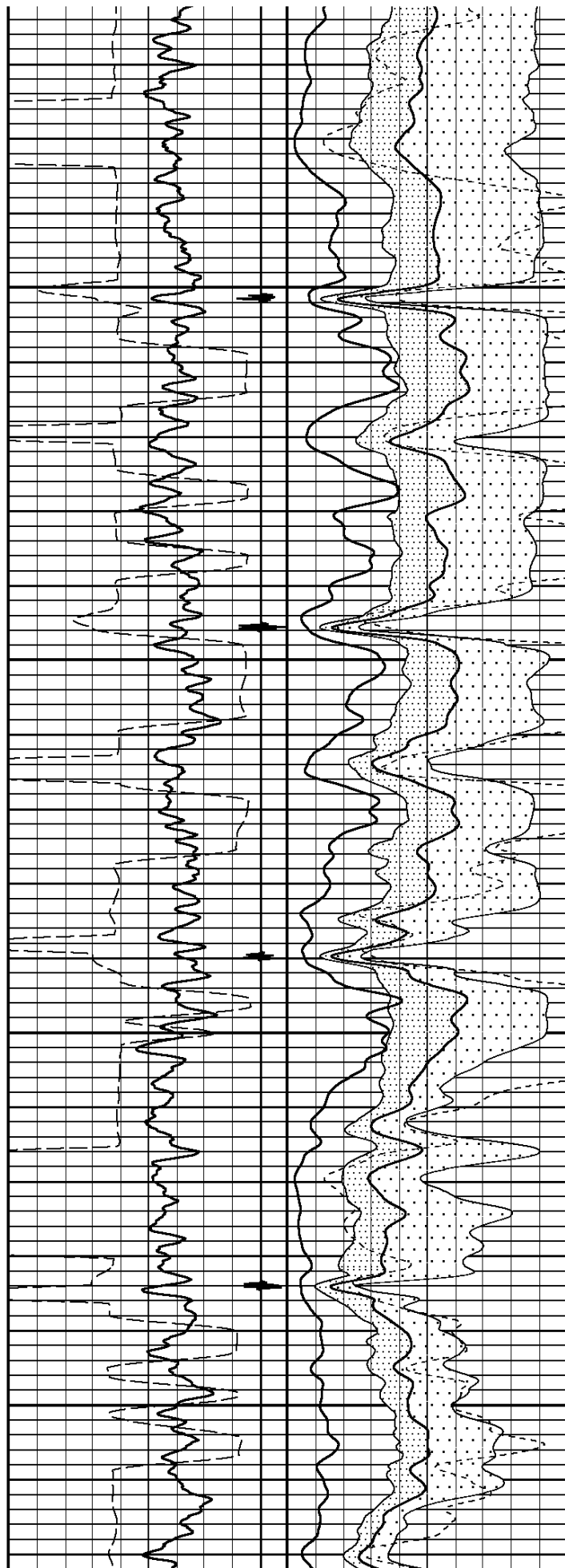
1600

1700



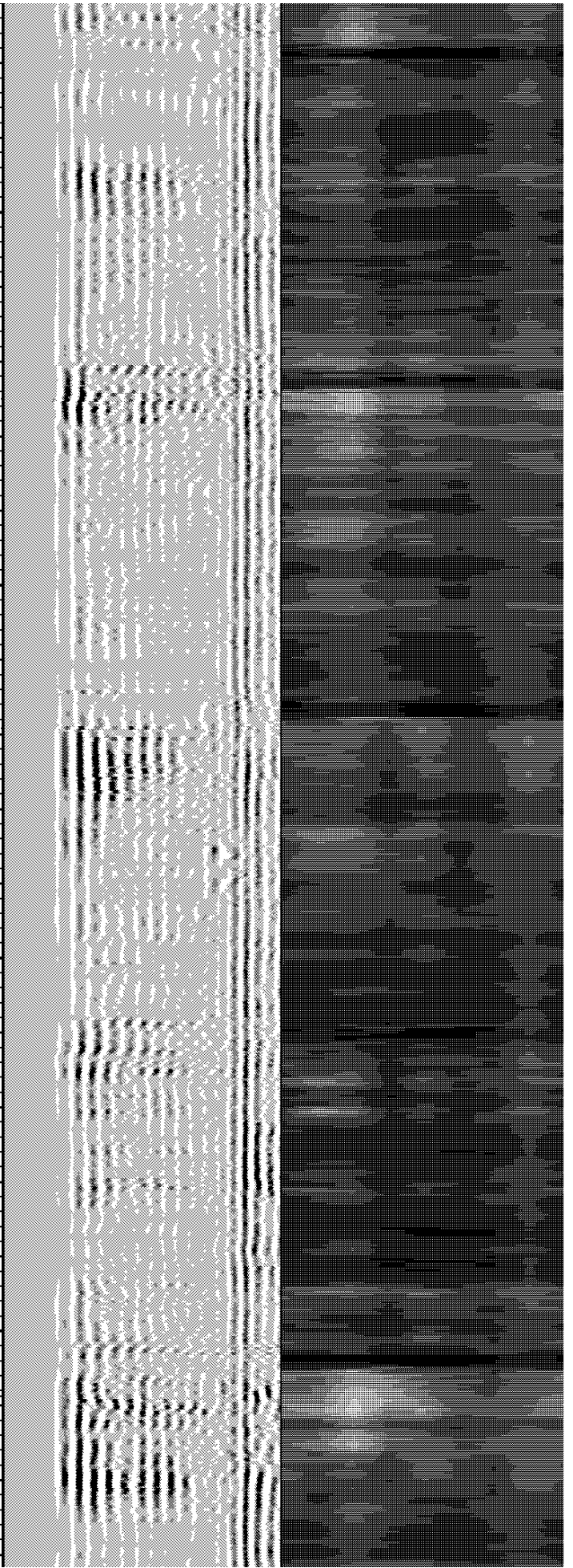
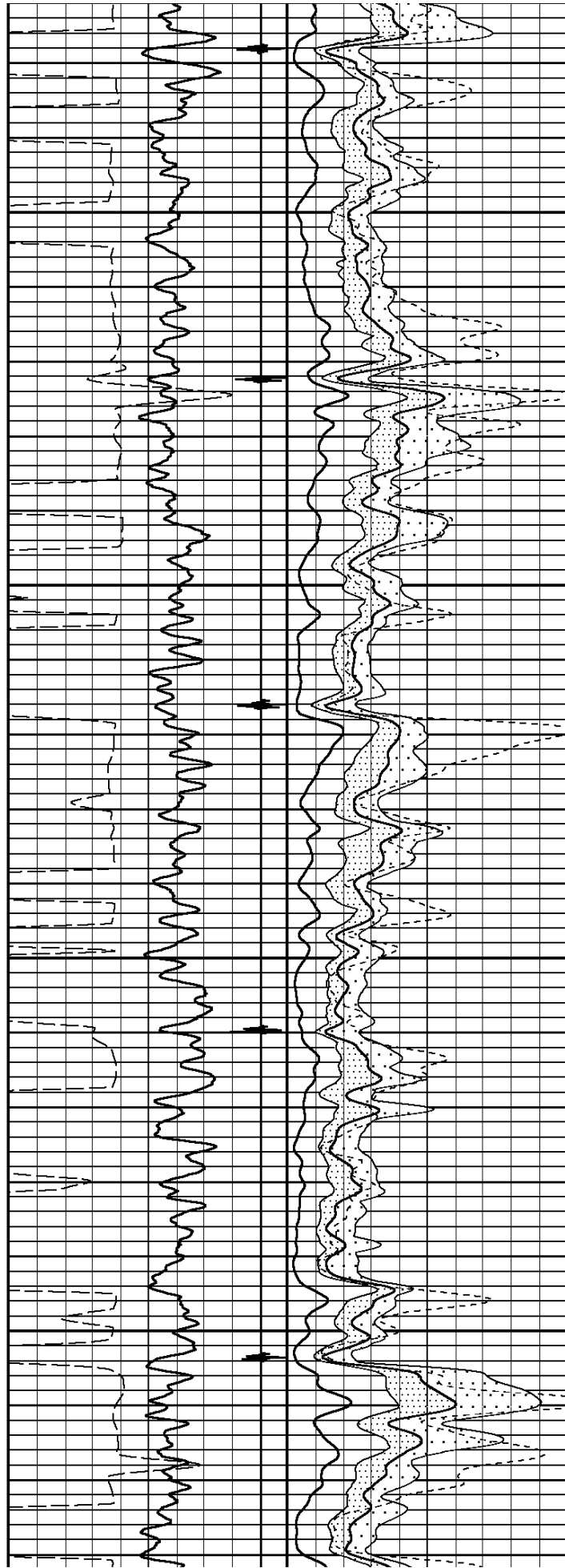
1800

1900



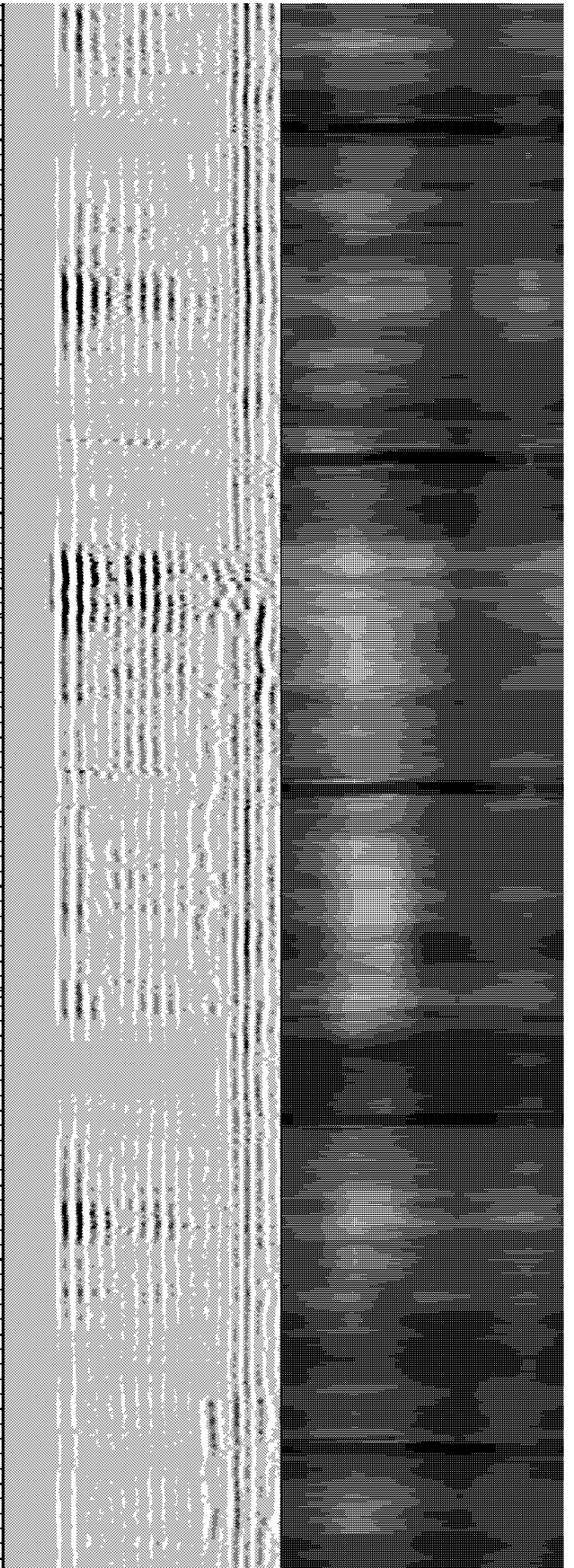
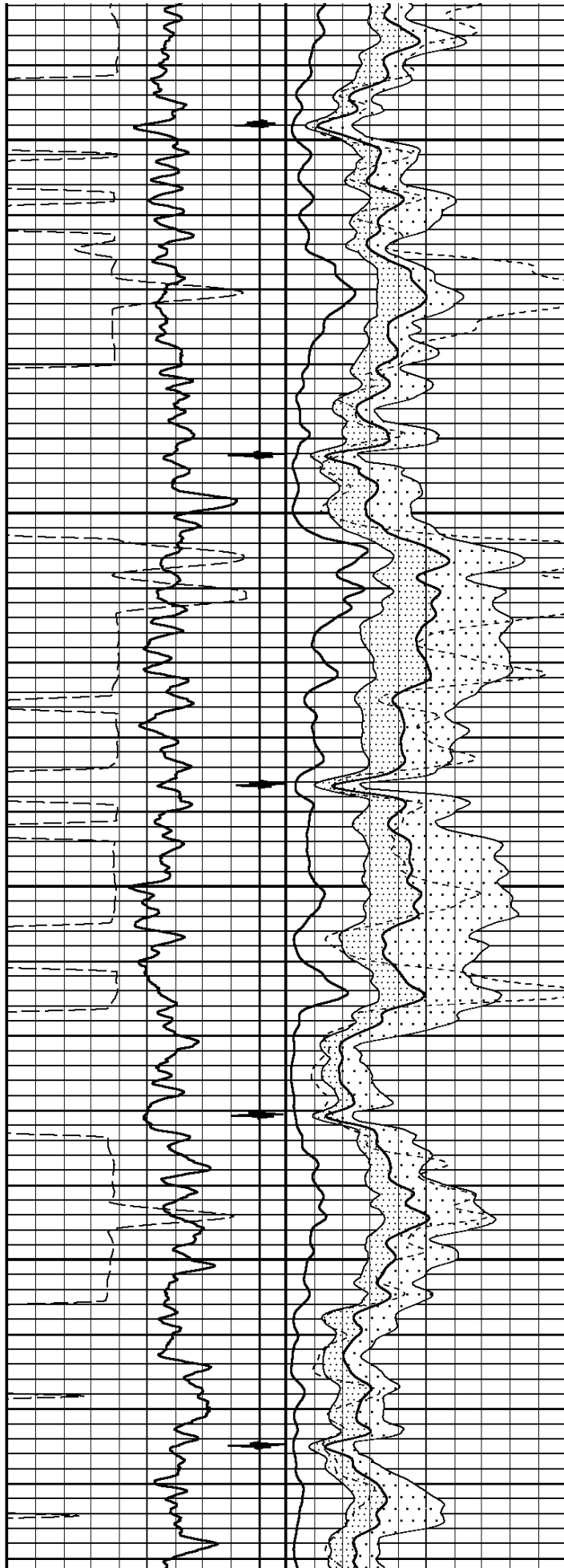
2000

2100



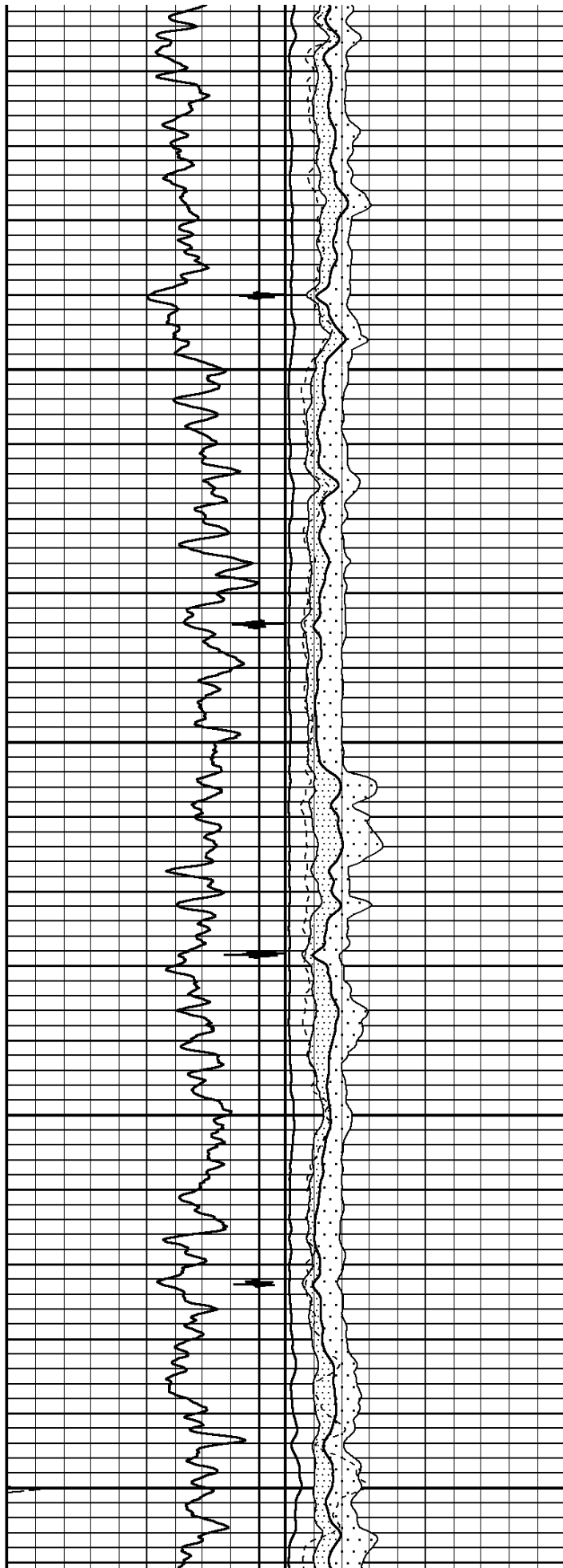
2200

2300



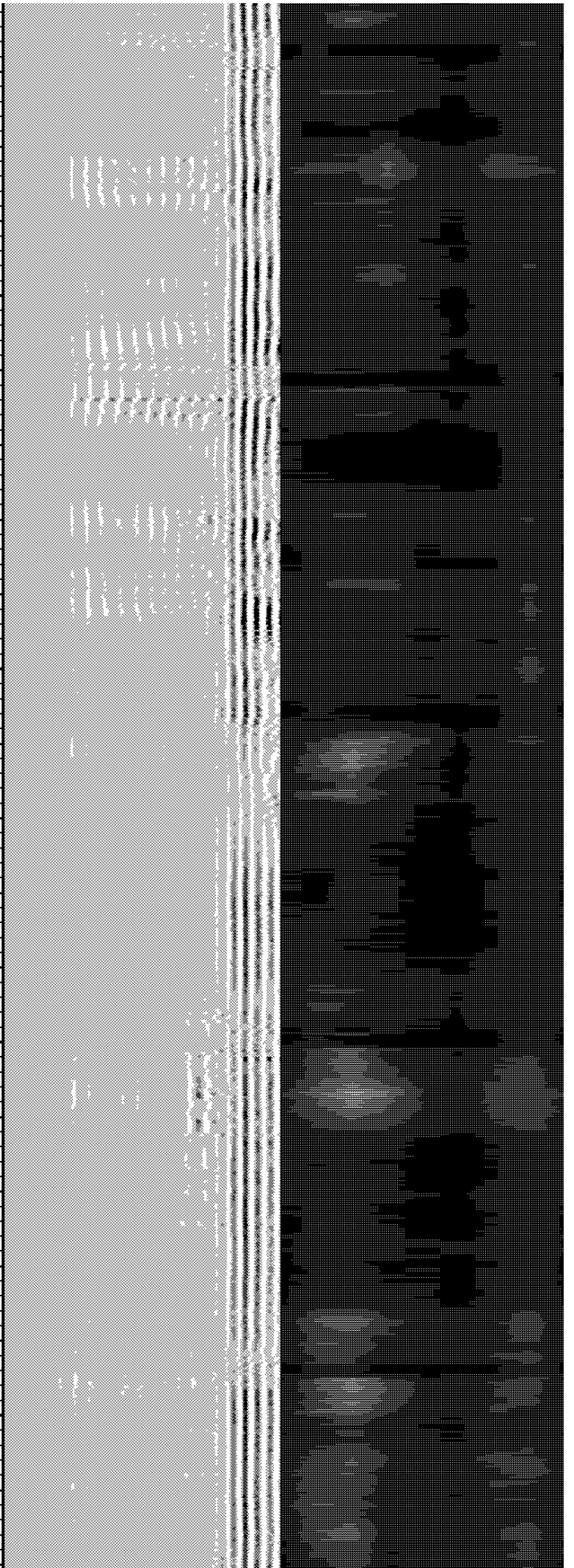
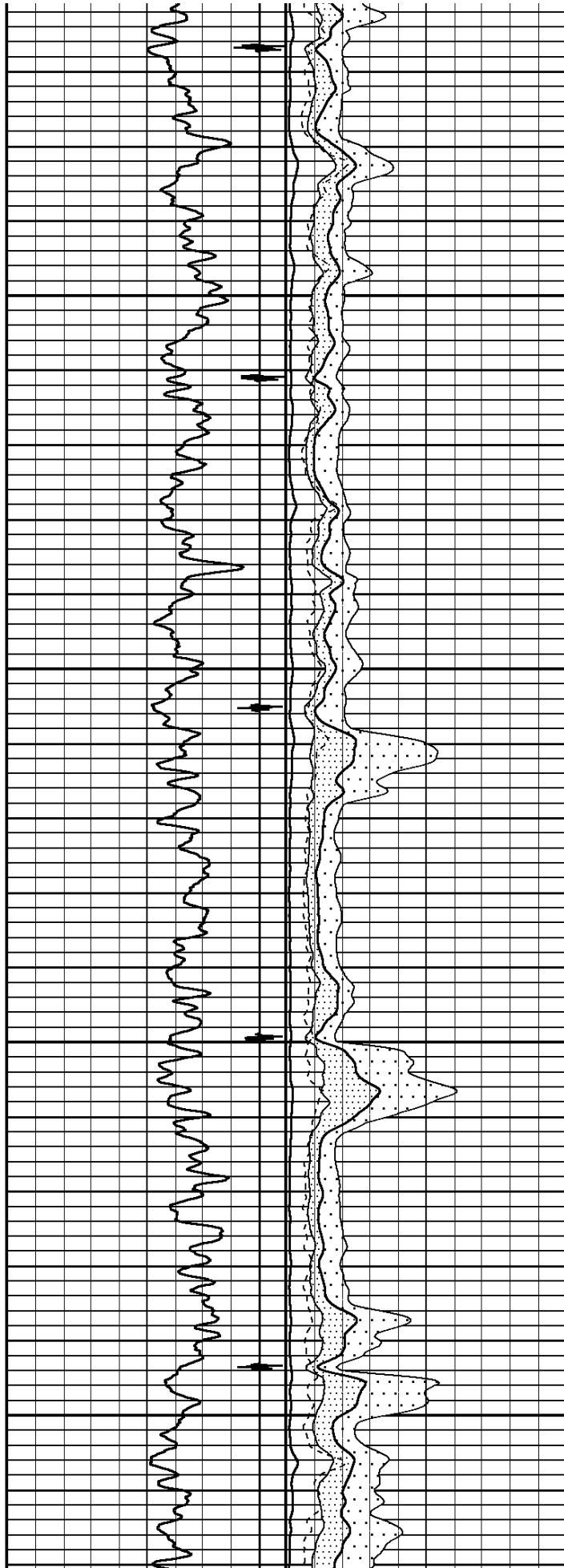
2600

2700



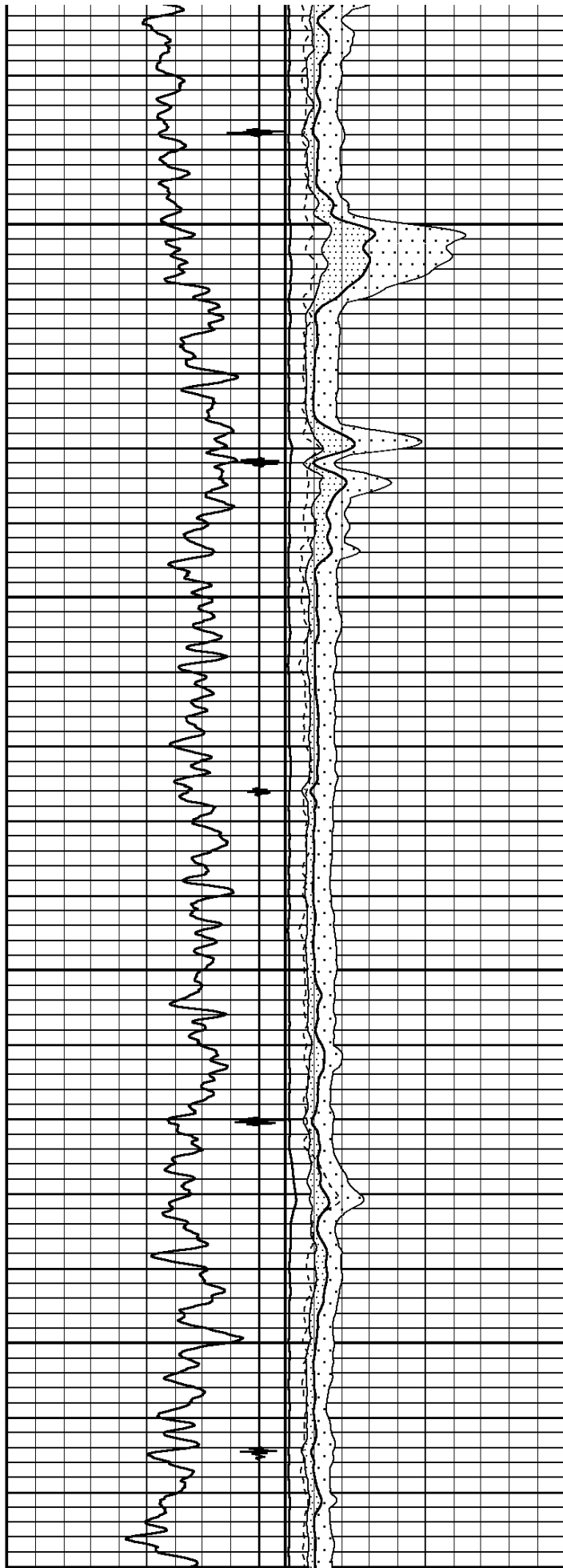
2800

2900



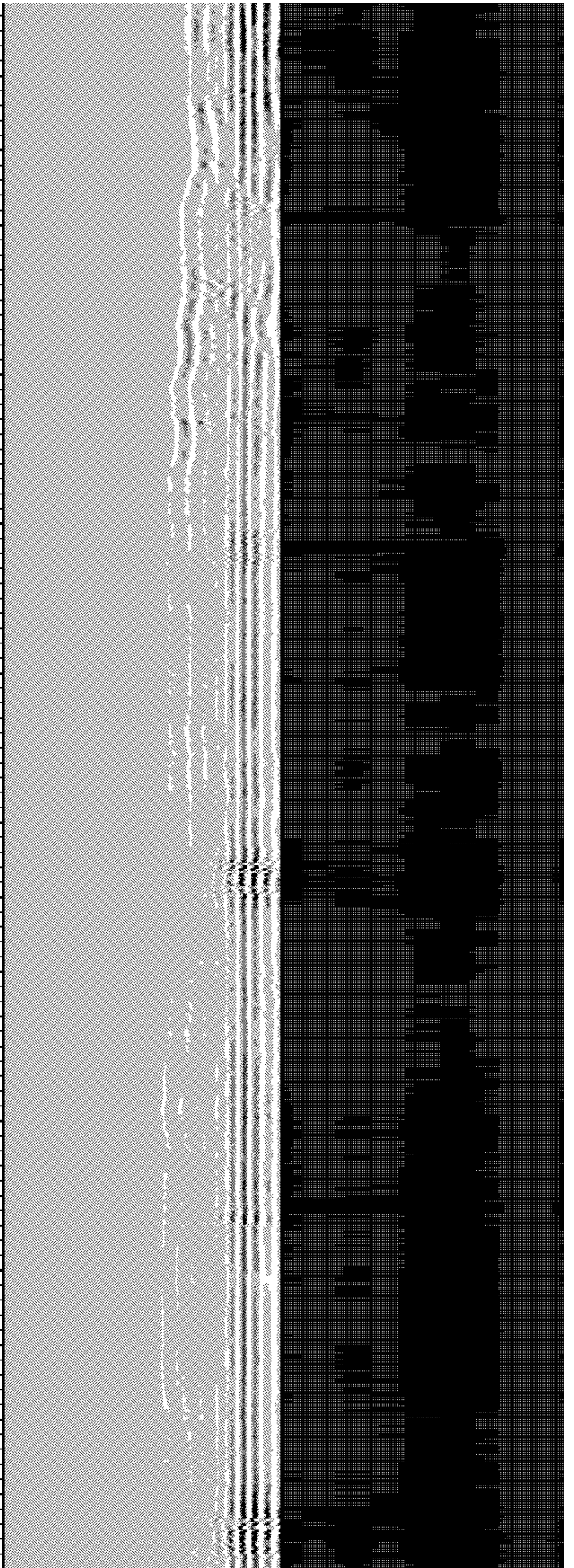
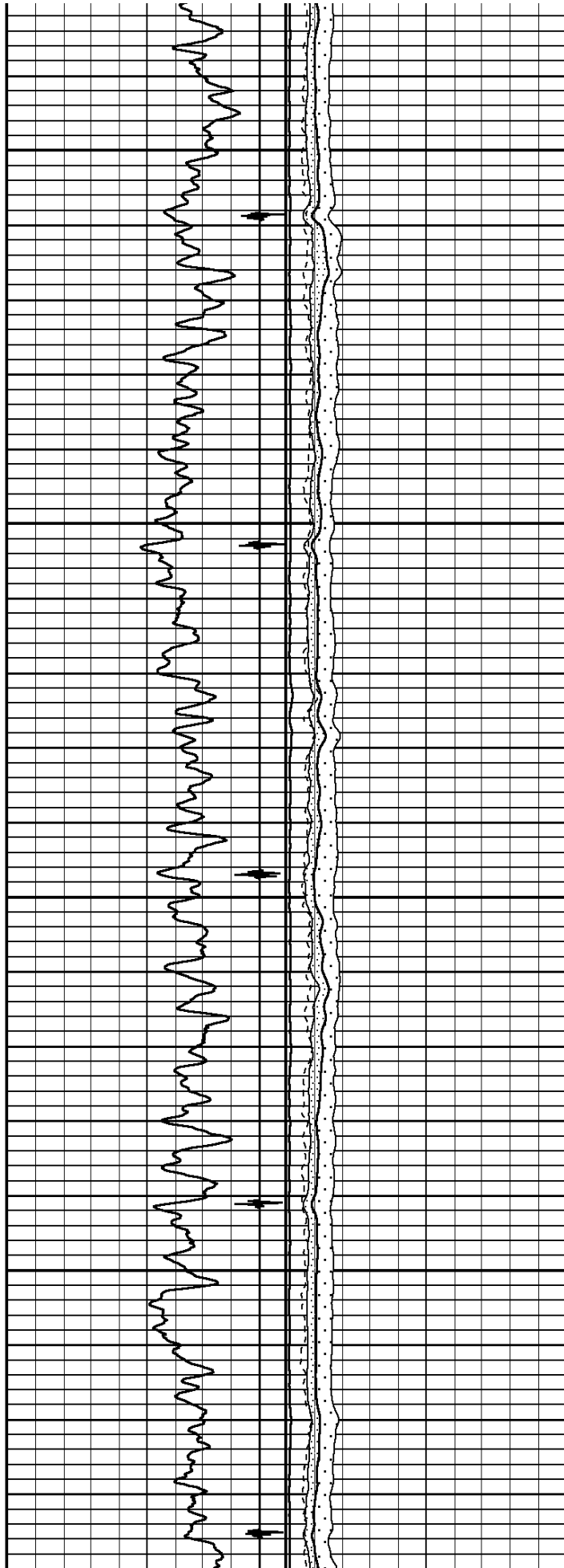
3000

3100



3200

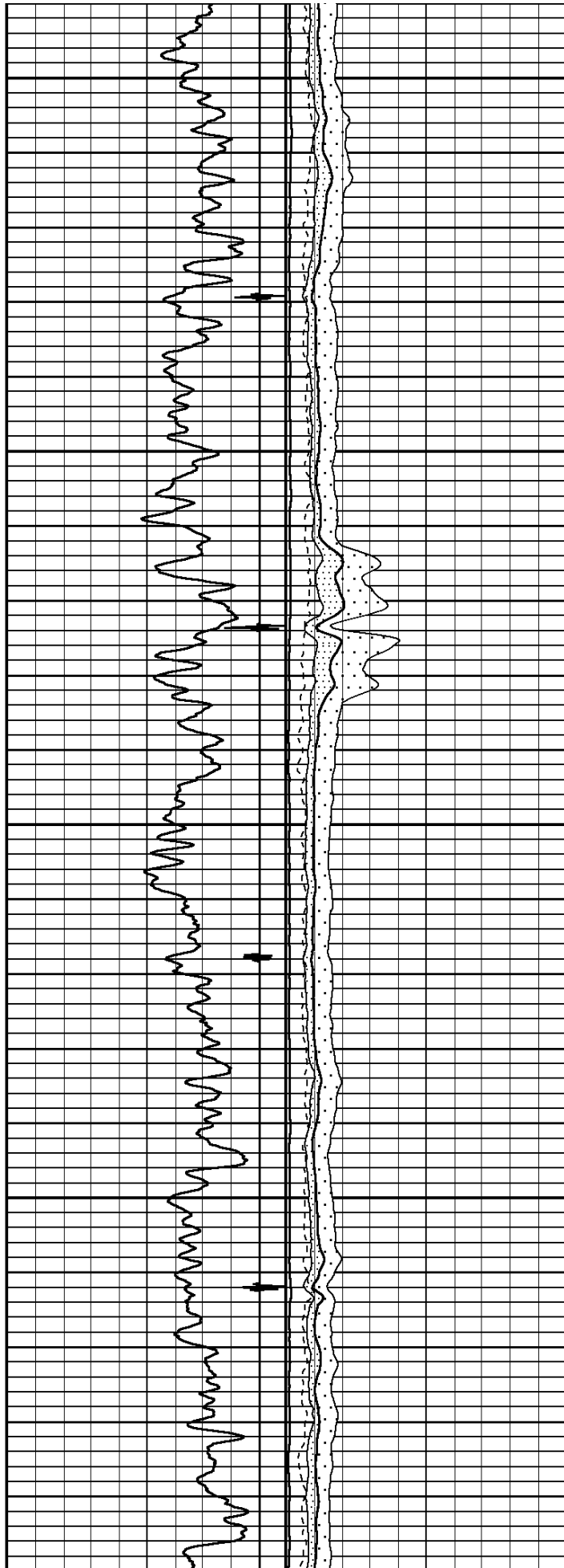
3300



3400

3500

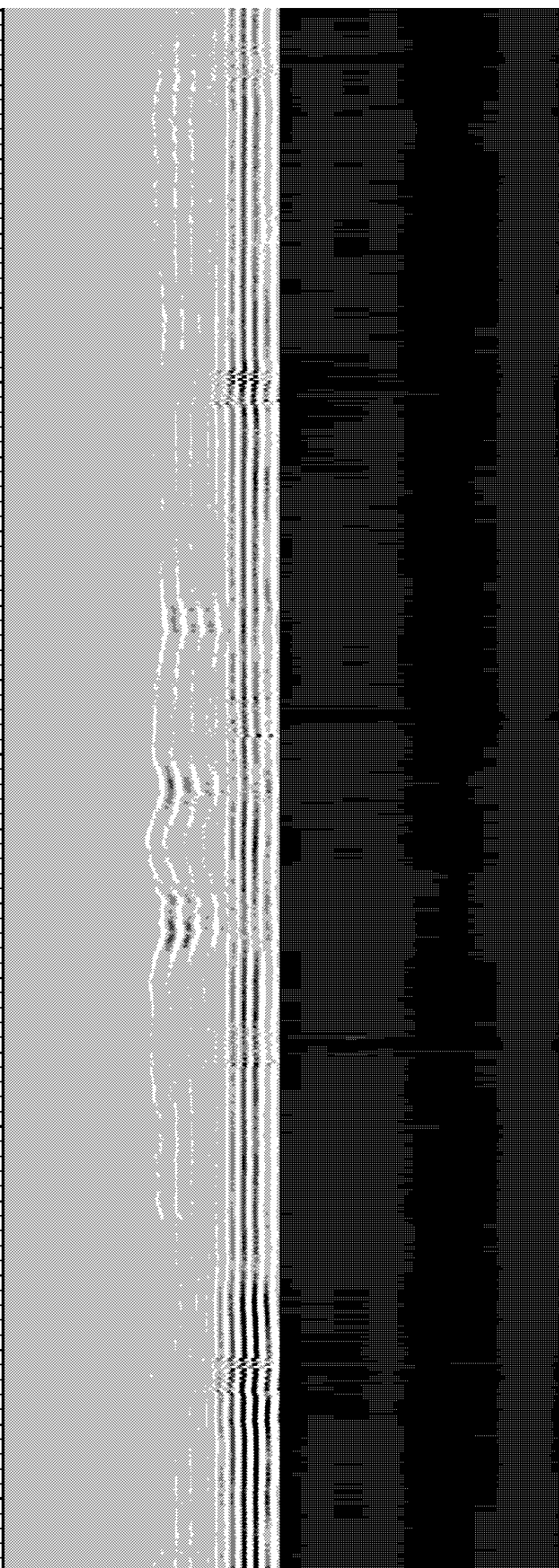
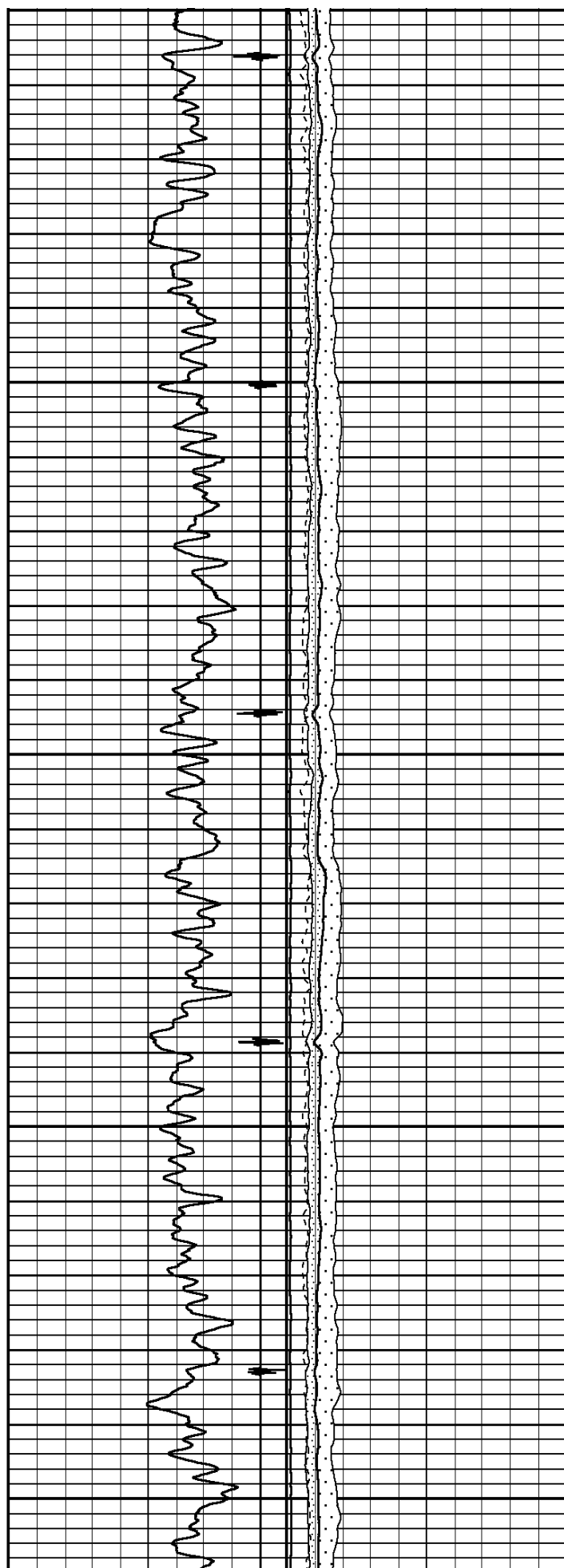
3600



5000

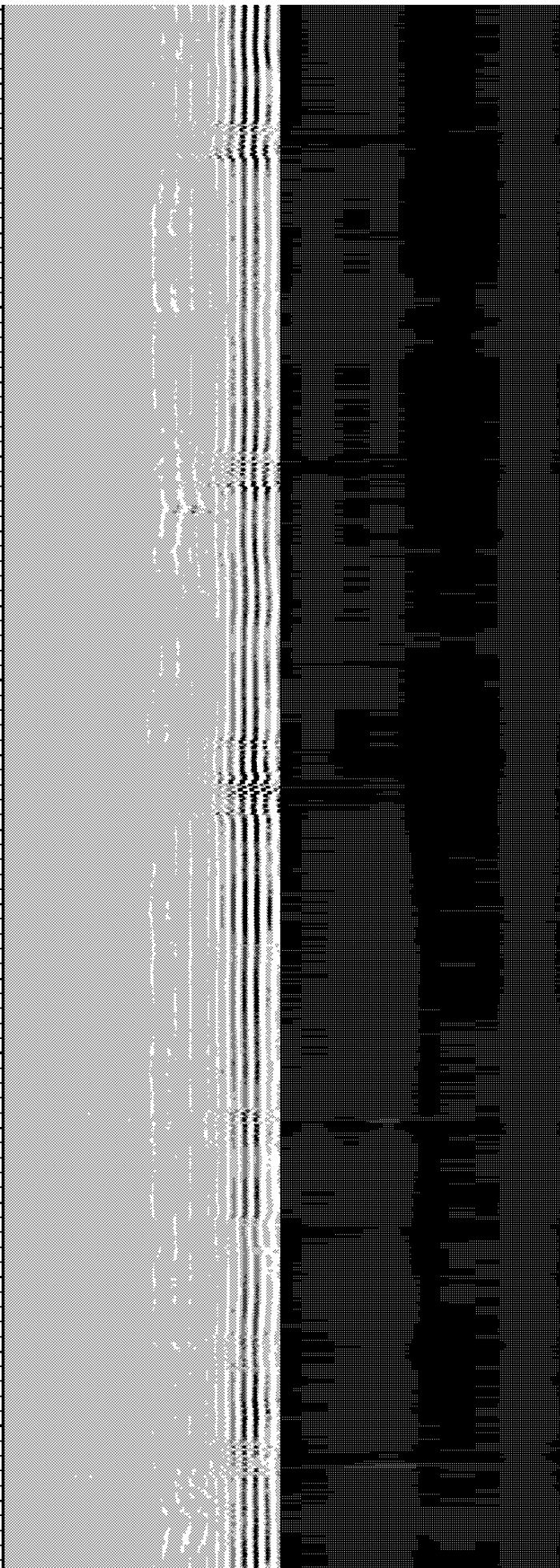
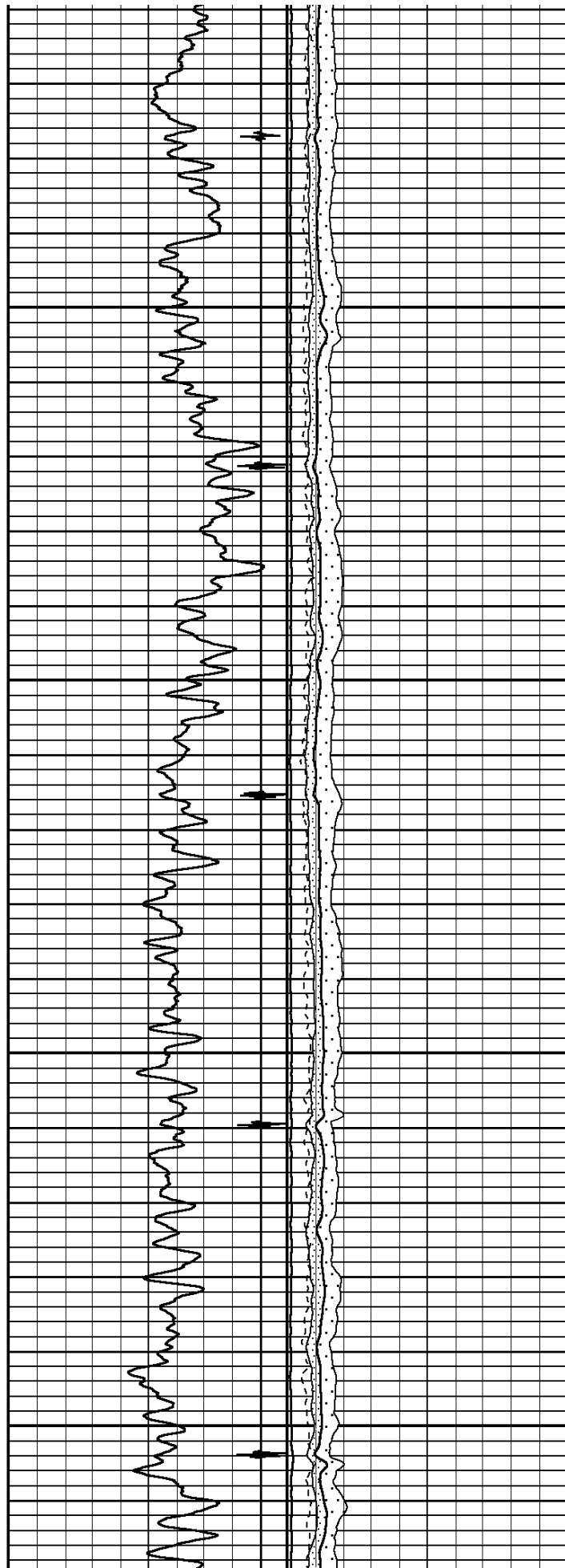
3700

3800



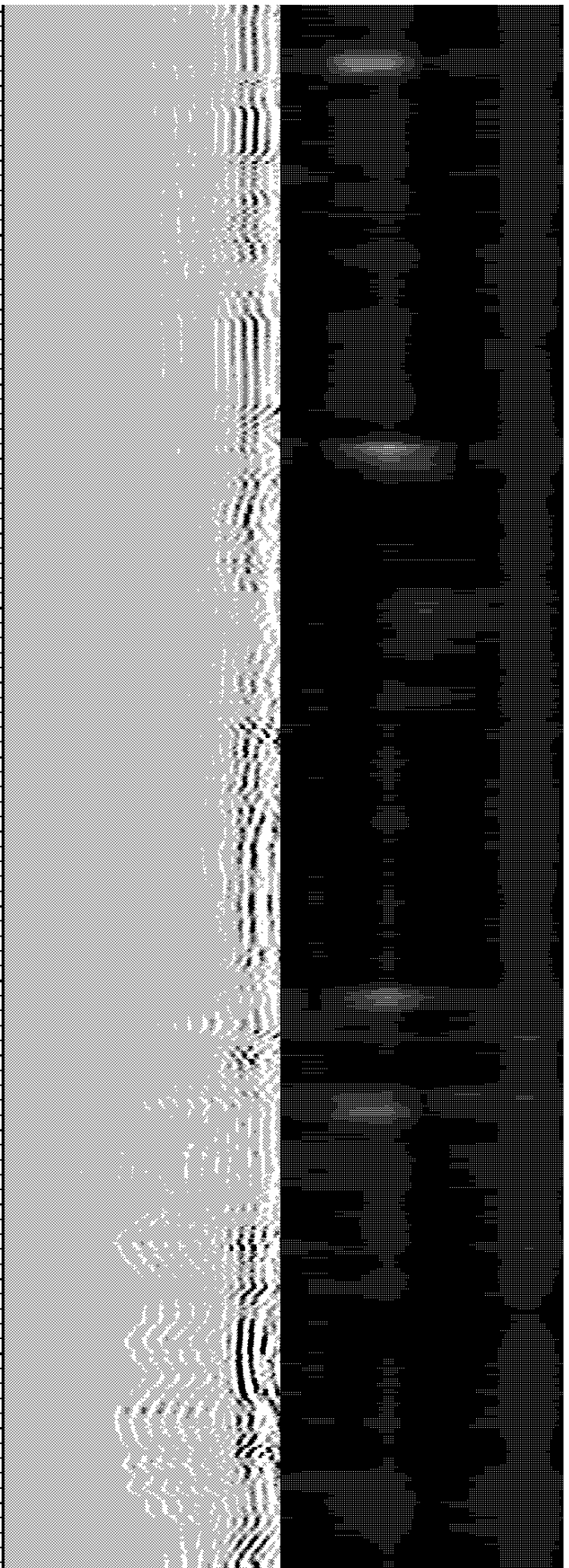
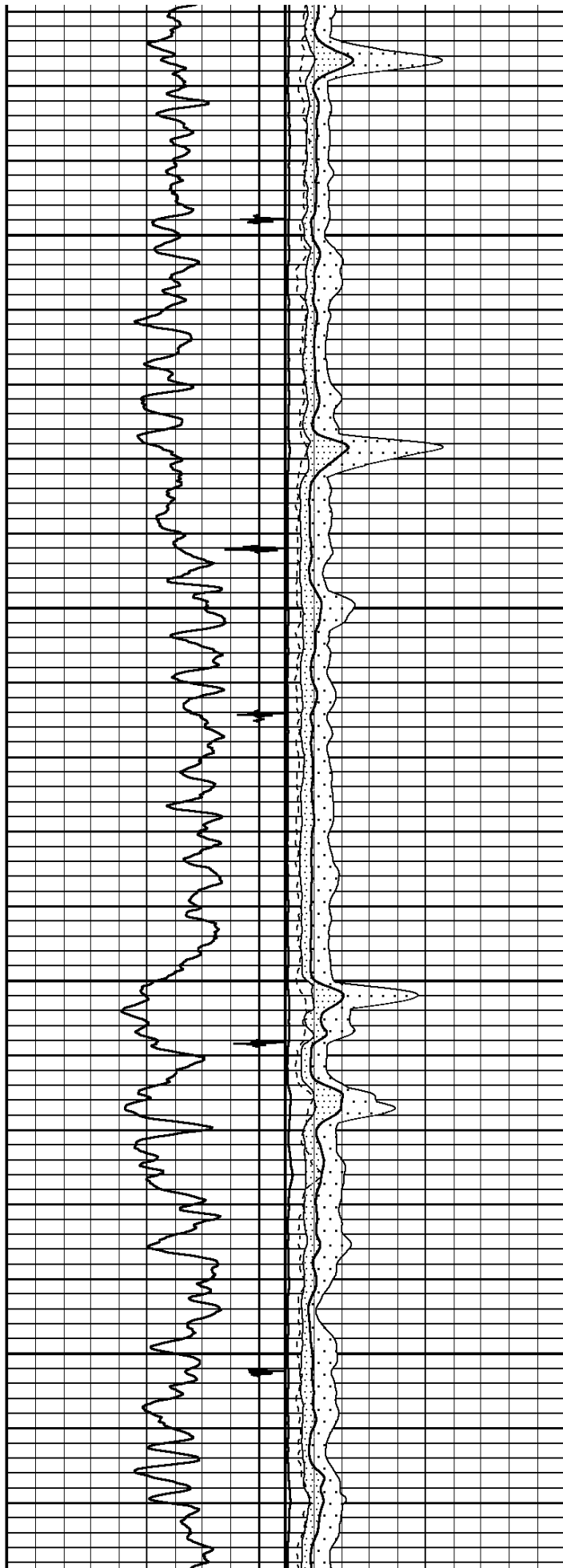
3900

4000



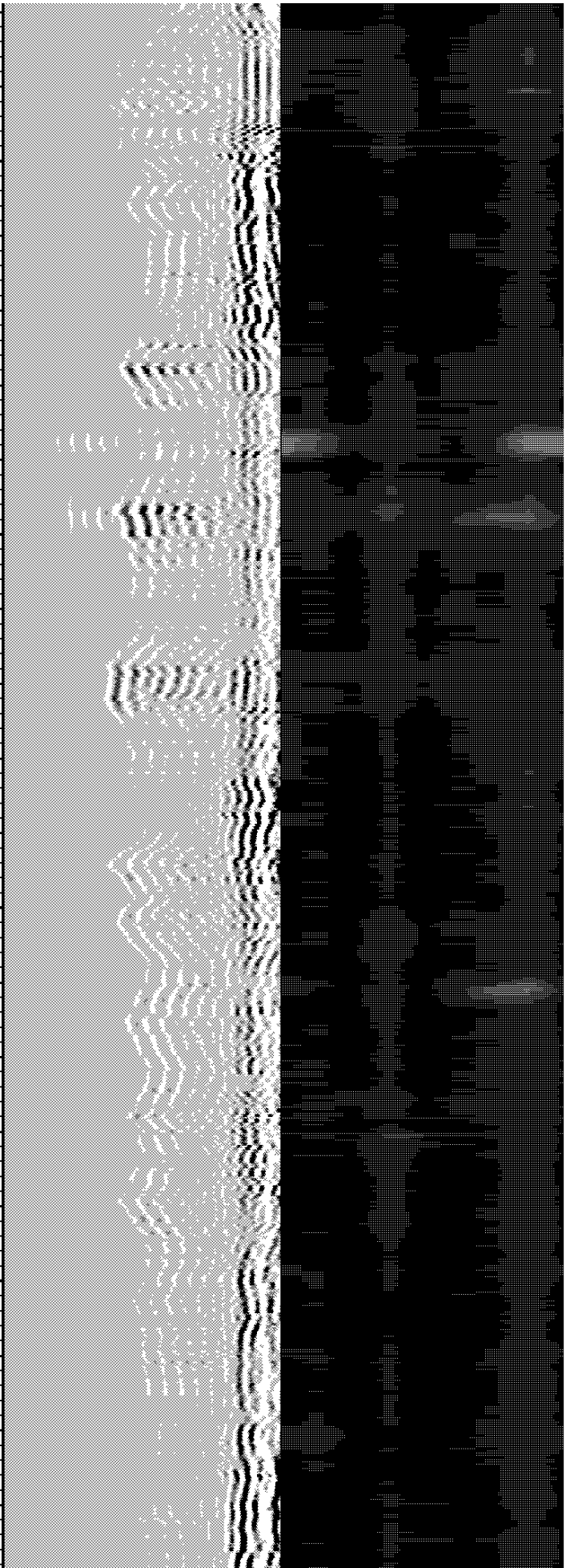
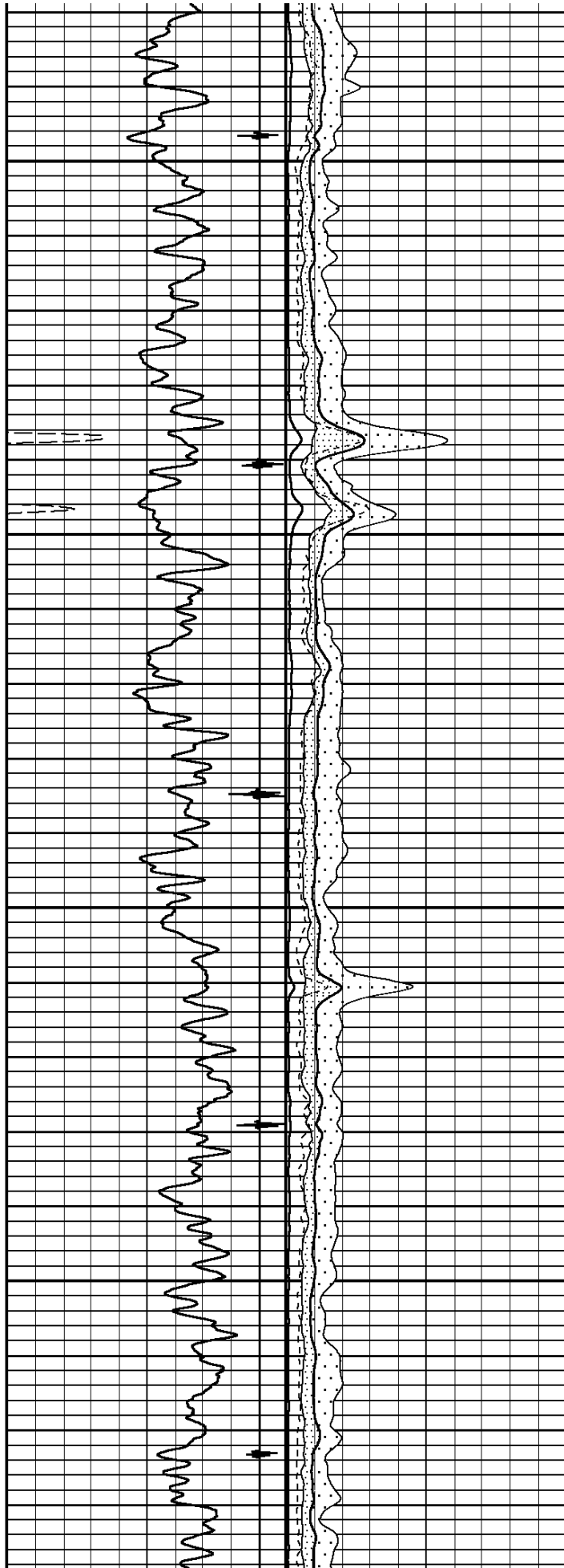
4100

4200



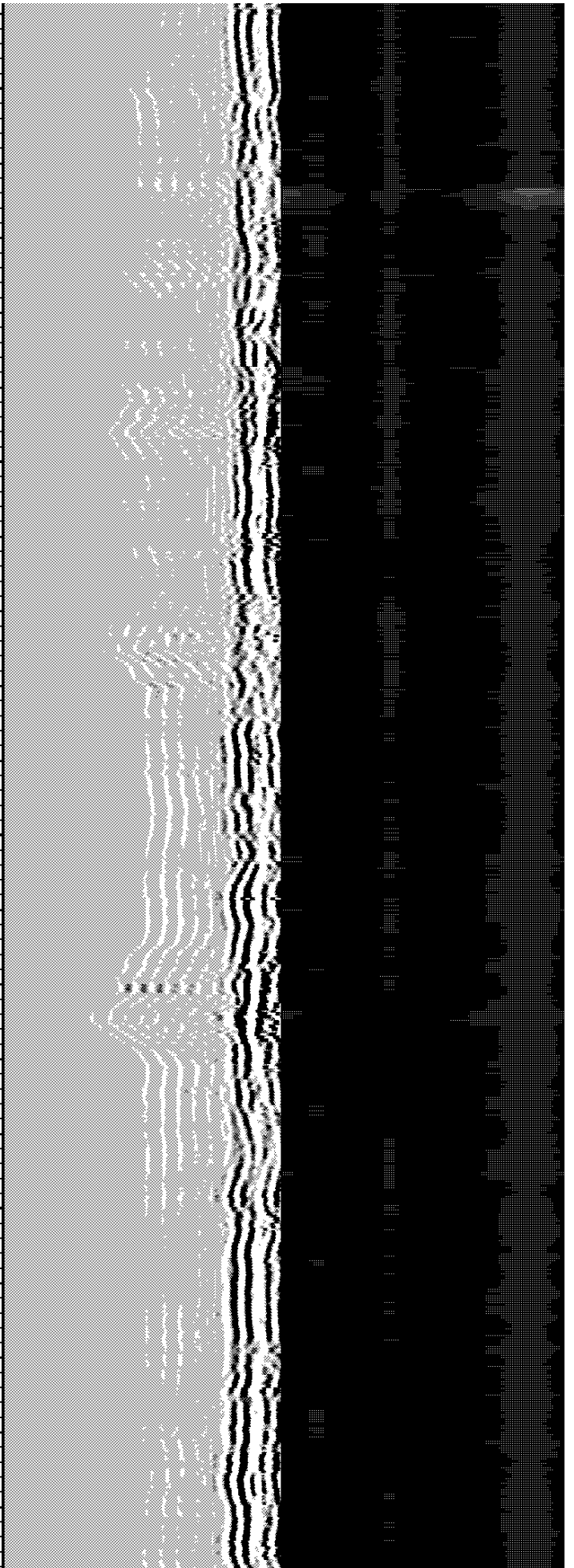
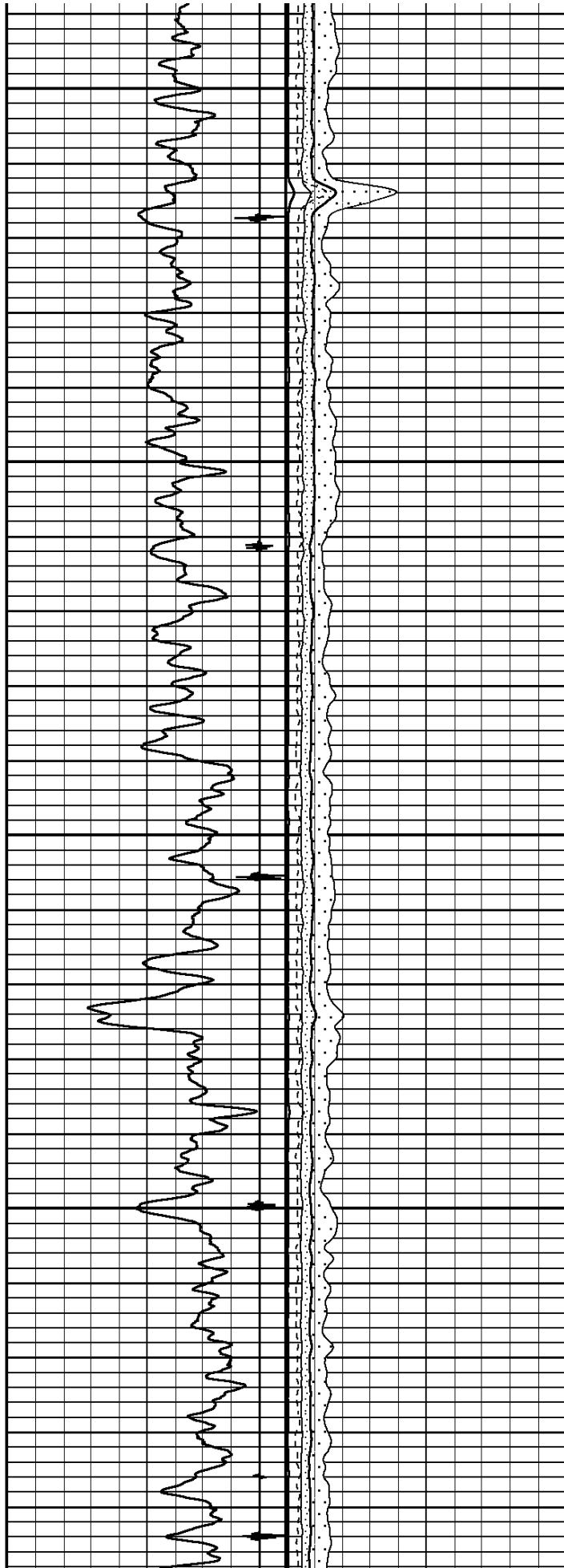
4300

4400



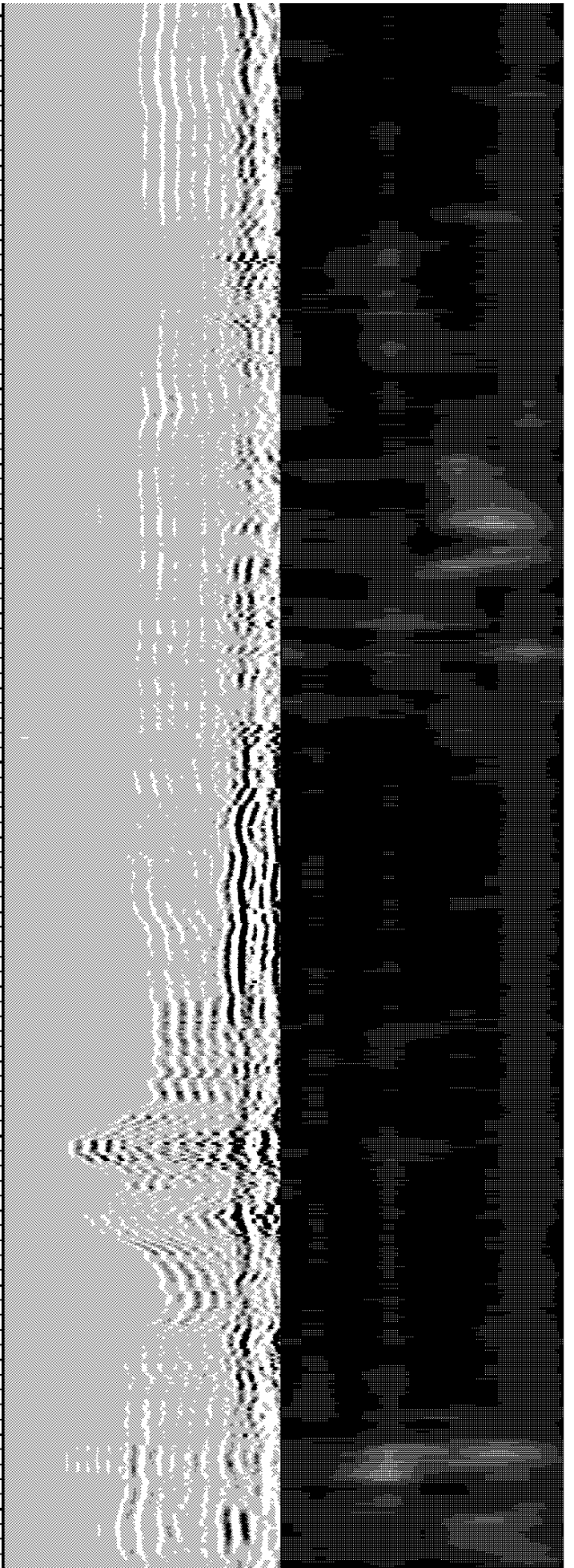
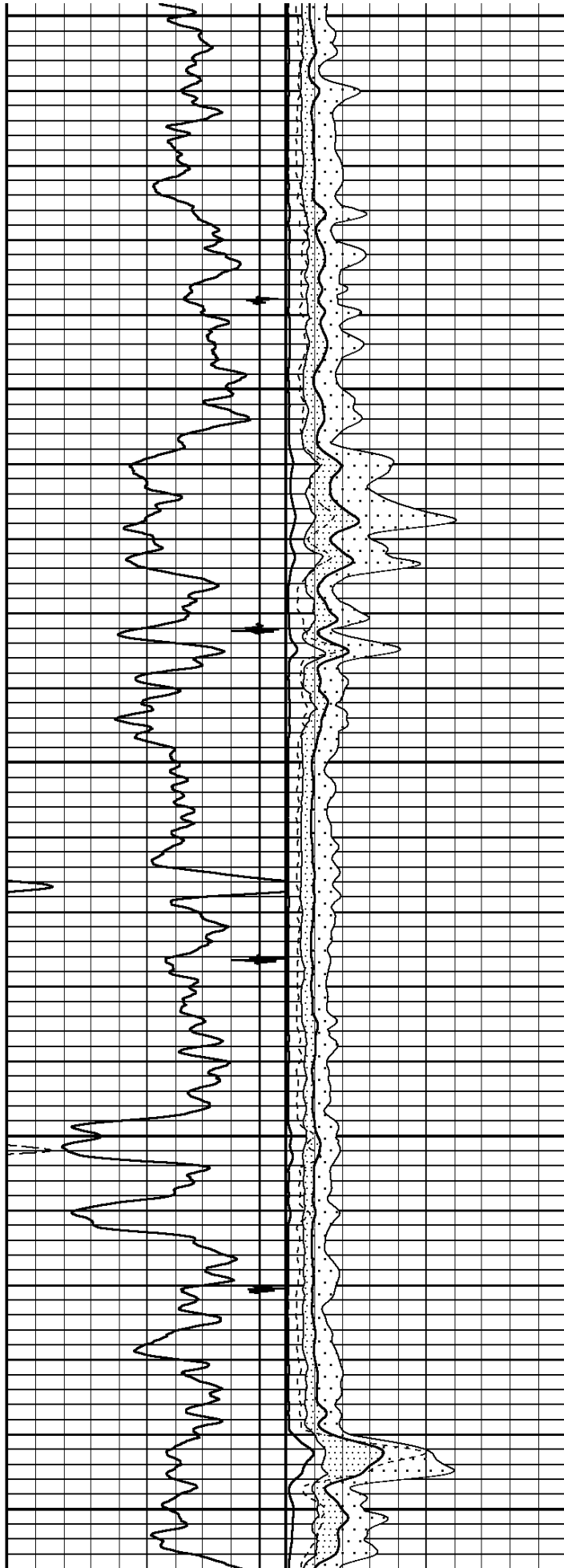
4500

4600

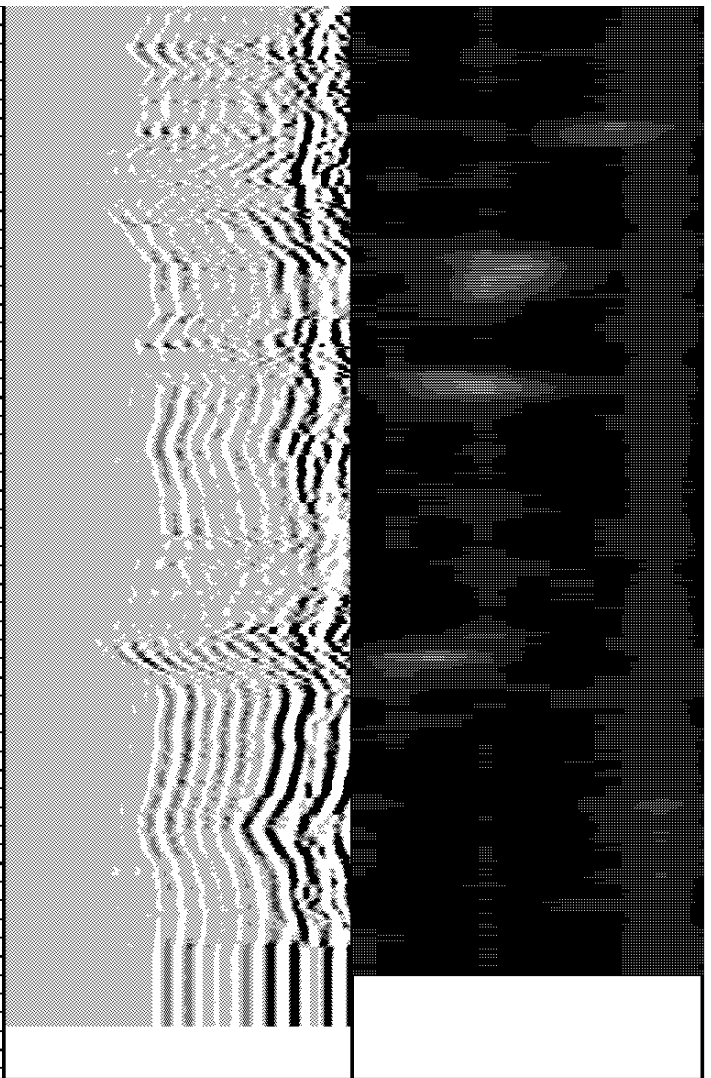
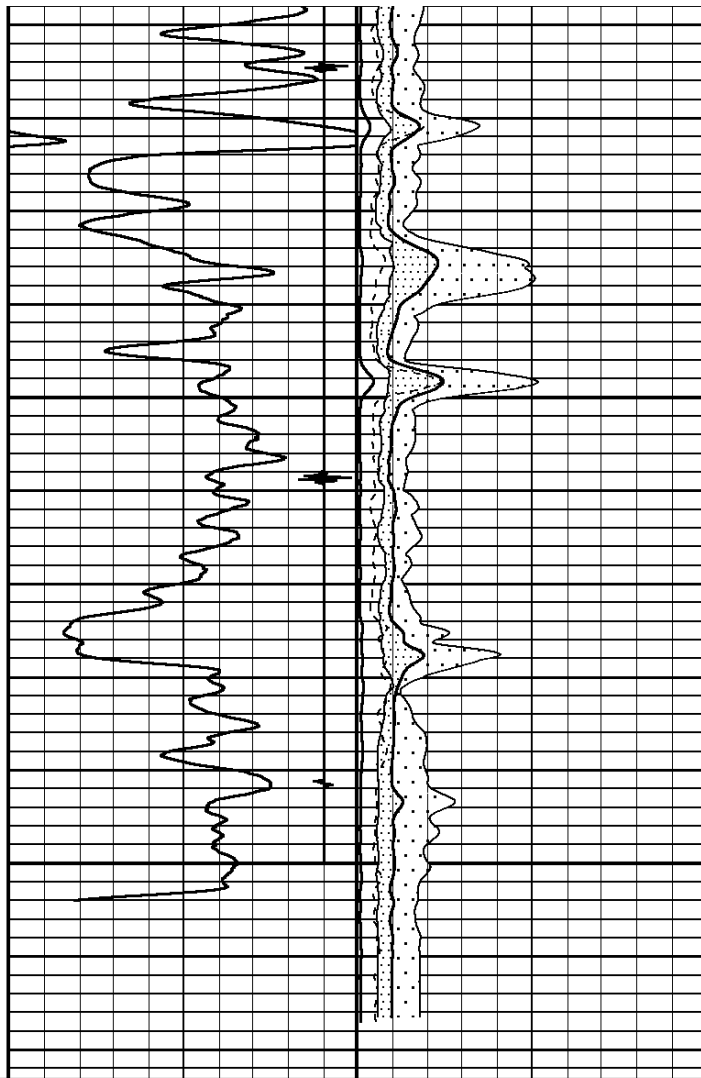


4700

4800



4900



Tension	TRAVEL TIME 3FT	MIN ENERGY	VARIABLE DENSITY 5FT	VARIABLE ENERGY
0 2000	333 Microseconds 233	0 Millivolts 100	200 Microseconds 1200	0 Millivolts 100
	Gamma Ray	AVG ENERGY		
	0 API 150	0 Millivolts 100		
	Collar Locator	MAX ENERGY		
	-8000 Millivolts 800	0 Millivolts 100		
		AMPLITUDE 3FT		
		0 Millivolts 100		
		AMP X 5		
		0 Millivolts 20		

START DEPTH: 4973.3 DIRECTION: UP DATE: 08/14/2013 TIME: 16:54 MODE: TRACE PLAYBACK

202063 CBLMAINPSI

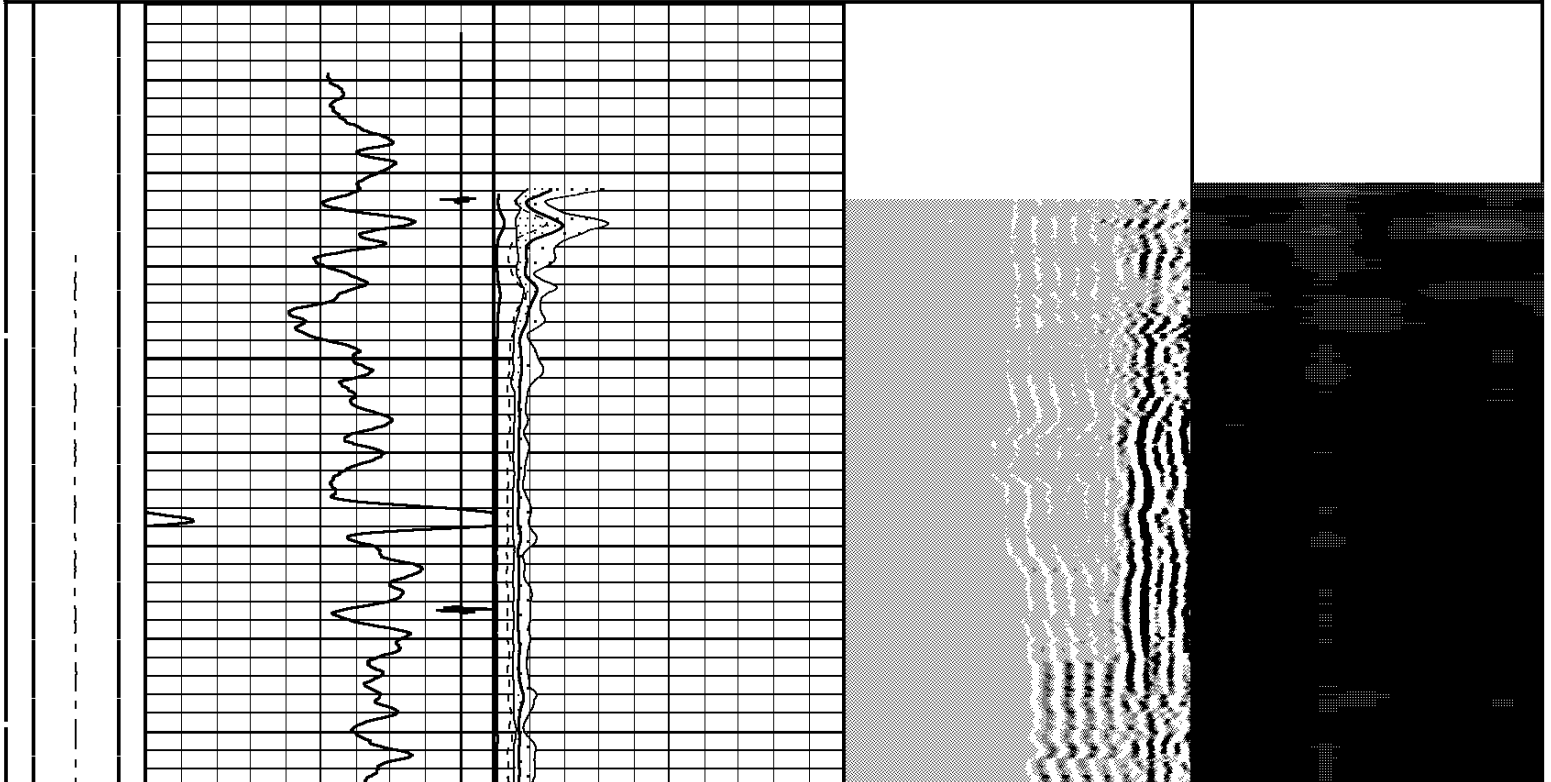
MAIN PASS

REPEAT PASS

202063 CBLREPEAT

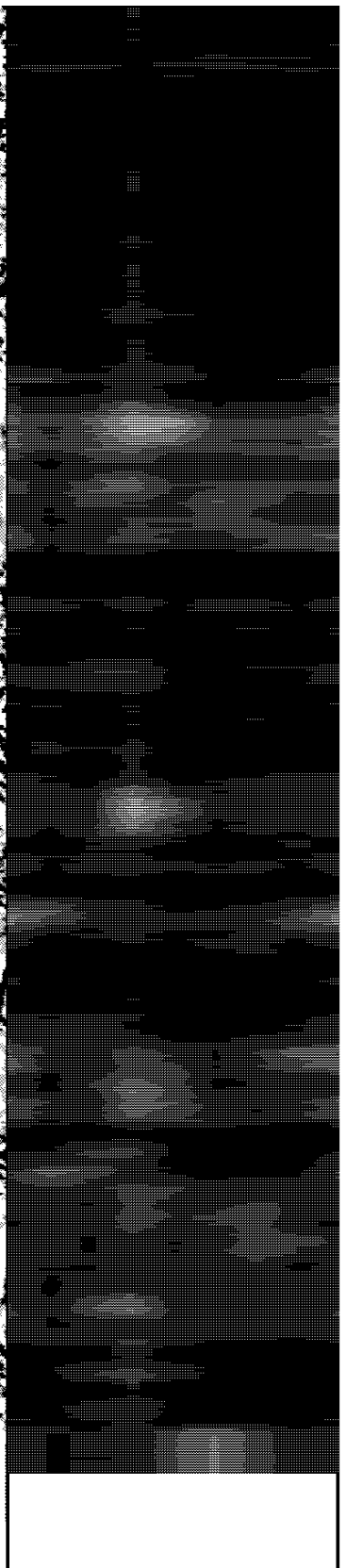
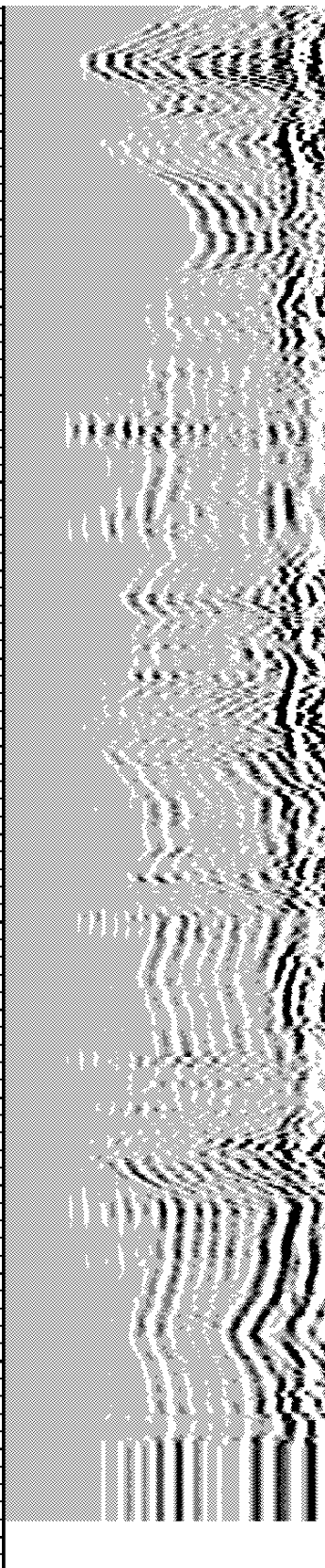
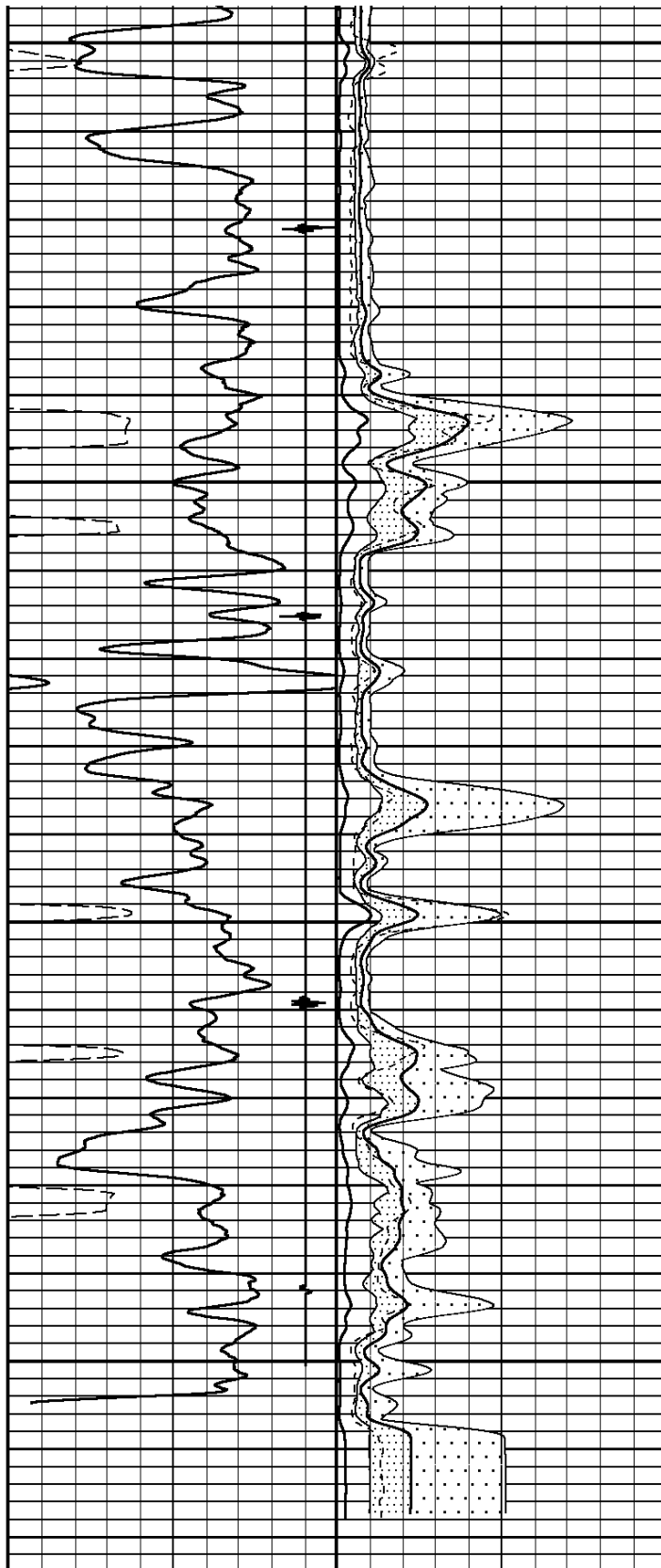
FINISH DEPTH: 4717.4 Feet DIRECTION: UP DATE: 08/14/2013 TIME: 12:53 MODE: TRACE PLAYBACK

		AMP X 5					
		0	Millivolts	20			
		AMPLITUDE 3FT					
		0	Millivolts	100			
		Collar Locator		MAX ENERGY			
-8000	Millivolts	800	0	Millivolts	100		
		Gamma Ray		AVG ENERGY			
0	API	150	0	Millivolts	100		
Tension	TRAVEL TIME 3FT		MIN ENERGY		VARIABLE DENSITY 5FT		VARIABLE ENERGY
0	2000	333	Microseconds	233	0	Millivolts	100
					200	Microseconds	1200
						0	Millivolts
							100



4800

4900



Tension	TRAVEL TIME 3FT	MIN ENERGY	VARIABLE DENSITY 5FT	VARIABLE ENERGY
0 2000	333 Microseconds 233	0 Millivolts 100	200 Microseconds 1200	0 Millivolts 100
	Gamma Ray	AVG ENERGY		
	0 API 150	0 Millivolts 100		
	Collar Locator	MAX ENERGY		

-8000	Millivolts	800	0	Millivolts	100
AMPLITUDE 3FT					
			0	Millivolts	100
AMP X 5					
			0	Millivolts	20

START DEPTH: **4974.0** DIRECTION: **UP** DATE: **08/14/2013** TIME: **12:53** MODE: **TRACE PLAYBACK**

202063 CBLREPEAT

REPEAT PASS

DEPTH SCALE: **5":100'**

LOGGED VERSION: **2012.07.18.162"**

08/12/13 06:43 3.3 F Ver 162R 2.0b Job 202061

Sector Bond Before Calibration

Tool Type SBT-AA Serial No sbta237

Sensor	Description	Standard	Measured
AMP 3FT	ZERO	0.70	3.30
	PLUS	72.00	853.70
AMP 5FT	ZERO	5.00	5.30
	PLUS	95.00	1170.60
1 SECTOR AMP	ZERO	5.00	43.60
	PLUS	95.00	1104.60
2 SECTOR AMP	ZERO	5.00	131.20
	PLUS	95.00	1163.30
3 SECTOR AMP	ZERO	5.00	18.00
	PLUS	95.00	1205.30
4 SECTOR AMP	ZERO	5.00	21.70
	PLUS	95.00	1212.40
5 SECTOR AMP	ZERO	5.00	20.10
	PLUS	95.00	1090.20
6 SECTOR AMP	ZERO	5.00	17.00

6 SECTOR AMP	ZERO	5.00	17.00
	PLUS	95.00	1252.00
7 SECTOR AMP	ZERO	5.00	79.30
	PLUS	95.00	1443.40
8 SECTOR AMP	ZERO	5.00	142.00
	PLUS	95.00	1235.30

Cased Hole Cablehead

Weight 2.2 lb
 Length 1.02 ft
 Max. Diameter 1.685 in

Total Stack Weight 219.2 lb in air
 Total Stack Length 27.85 ft

Slim Hole Centralizer

Weight 11.9 lb
 Length 2.49 ft
 Max. Diameter 2.717 in

Collar Locator

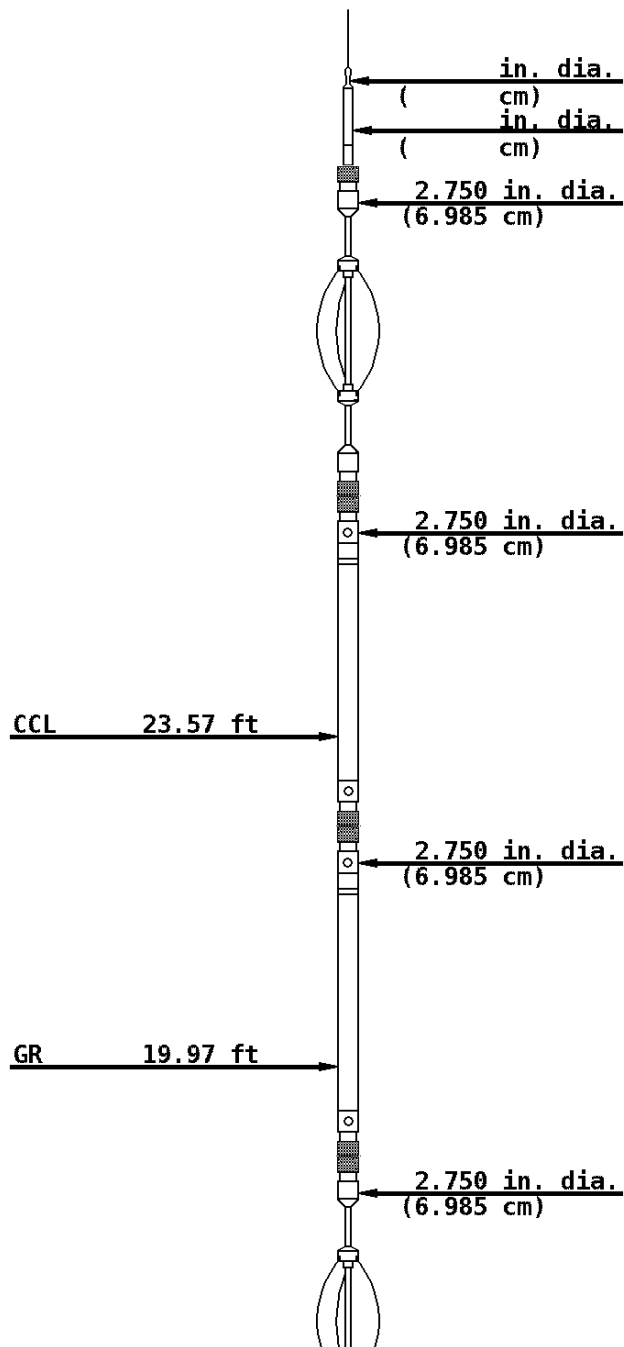
Weight 39.8 lb
 Length 3.40 ft
 Max. Diameter 2.717 in

Slim Hole Gamma Ray

Weight 39.8 lb
 Length 4.71 ft
 Max. Diameter 2.717 in

Slim Hole Centralizer

Weight 23.8 lb
 Length 3.08 ft



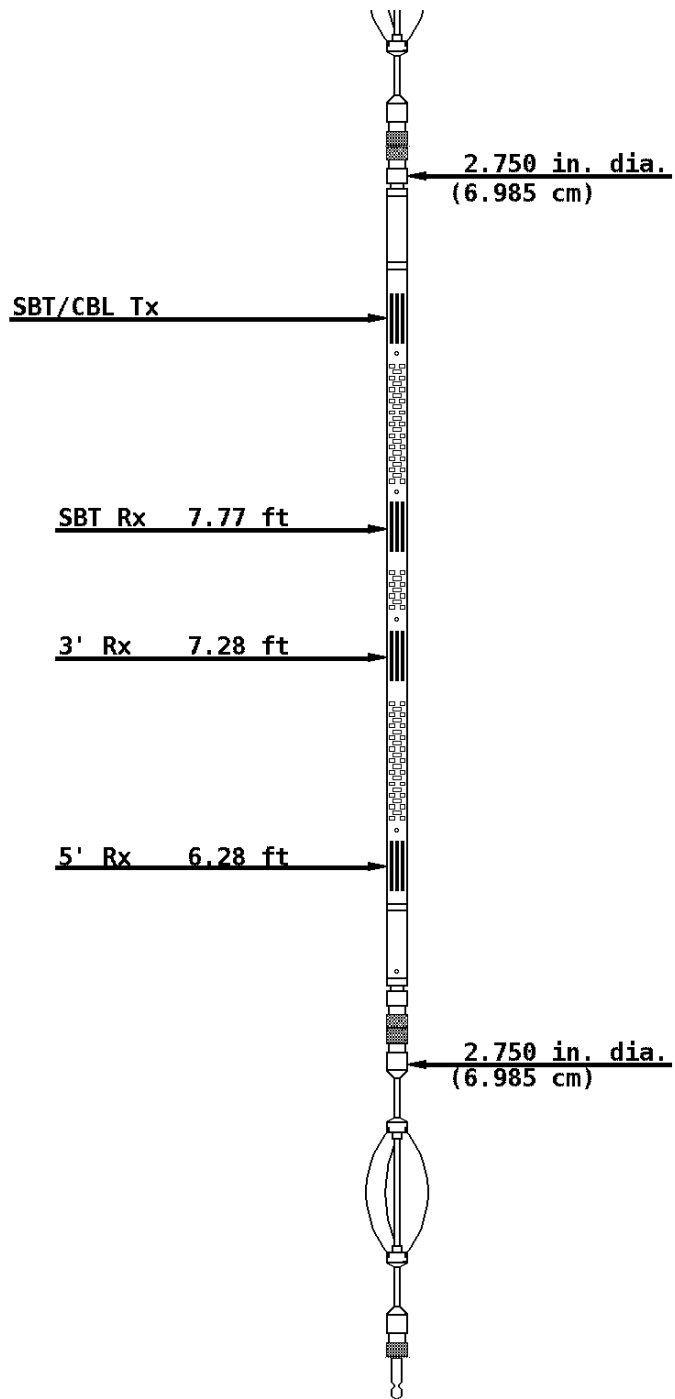
Max. Diameter 2.717 in

Sector Bond

Weight 89.8 lb
Length 10.32 ft
Max. Diameter 2.717 in

Slim Hole Centralizer

Weight 11.9 lb
Length 2.82 ft
Max. Diameter 2.717 in



COMPANY ALTA MESA SERVICE, LP

WELL SMOKE RANCH LLLP 1-21

FIELD WILLOW

COUNTY PAYETTE

STATE IDAHO



Weatherford®