

CONFIDENTIAL

Bridge Energy Inc.



Scale 1:240 (5"=100') Imperial
Measured Depth Log

Well Name: Korn 1-22
 Location: T7N R4W NE 1/4 NW 1/4 Sec. 22
 License Number: Region: USA
 Spud Date: 9/10/2010 Drilling Completed:
 Surface Coordinates: sec 22, T7N R4W
 N43-56-11.42, W116-48-15.65
 Bottom Hole Coordinates: N43-56-11.42, W116-48-15.65
 Ground Elevation (ft): 2359' K.B. Elevation (ft): 2376'
 Logged Interval (ft): 50' To: Total Depth (ft):
 Formation:
 Type of Drilling Fluid: SBM

Printed by STRIP.LOG from WellSight Systems 1-800-447-1534 www.WellSight.com

OPERATOR

Company: Bridge Energy Inc.
 Address: Bridge Resources Corp.
 1580 Lincoln Street, Suite 1110
 Denver, Colorado 80203

Comments

Company Man: Ron Richards
 Tool Pusher: Michael Williams
 Rig: Razorback - Story Services Inc.

ROCK TYPES

	Anhy		Ss ltblu		shly sltst rdbrn		Tuff blugy
	Bent		Ss		shly sltst ltgy		Tuff tan
	Cht		Carbshdkgy		shly sltst gy		Tuff medgy
	Coal		Carbsh		shly sltst brn		Tuff ltgy
	Congl		Shale sndy		sltst ltgy		Tuff ltgrn
	Vertfrac		Sh rdbrn		sltst ltbrn		clyst tan
	Ls crm		Sh medgy		Slst		clyst rdbrn
	Ls ltgy		Sh ltgy		sltst olive		clyst ltgrn
	Lmst		Sh ltblu		sltst turq		clyst blgy
	Mrlst		Sh grn		Slst blugy		clyst ltgy
	Slst		Sh brn		NO SMPL		
	Dol		Shale		Fault		
	Ss crs		shly sltst tan		Csgp		

CONFIDENTIAL

ACCESSORIES

MINERAL

- Ls crm
- Vertfrac
- Anhy
- Arggrn
- Arg
- Bent
- Bit
- Brecfrag
- Calc
- Carb
- Chtdk
- Chtlt
- Dol
- Feldspar
- Ferrpel
- Ferr
- Glau
- Gyp
- Hvymin
- Kaol
- Marl

- Qtz or calet xls
- Nodule
- Phos
- Pyr
- Salt
- Sandy
- Silt
- Sil
- Sulphur
- Tuff

FOSSIL

- Algae
- Amph
- Belm
- Bioclst
- Brach
- Bryozoa
- Cephal
- Coral
- Crin
- Echin

- Fish
- Foram
- Fossil
- Gastro
- Oolite
- Ostra
- Pelec
- Pellet
- Pisolite
- Plant
- Strom

STRINGER

- Anhy
- Arg
- Bent
- Coal
- Dol
- Gyp
- Ls white
- Ls tan
- Ls ltgy

- Ls
- Mrst
- Clystrg gy
- Clystrg ltgy
- Stly cly strg gy
- Sltrstrg gy
- Sltrstrg ltgy
- Sltrstrg
- Ssstrg

TEXTURE

- Boundst
- Chalky
- Cryxln
- Earthy
- Finexln
- Grainst
- Lithogr
- Microxln
- Mudst
- Packst
- Wackest

OTHER SYMBOLS

POROSITY

- Earthy
- Fenest
- Fracture
- Inter
- Moldic
- Organic
- Pinpoint
- Vuggy

SORTING

- Well
- Moderate
- Poor

ROUNDING

- Rounded
- Subrnd
- Subang
- Angular

OIL SHOW

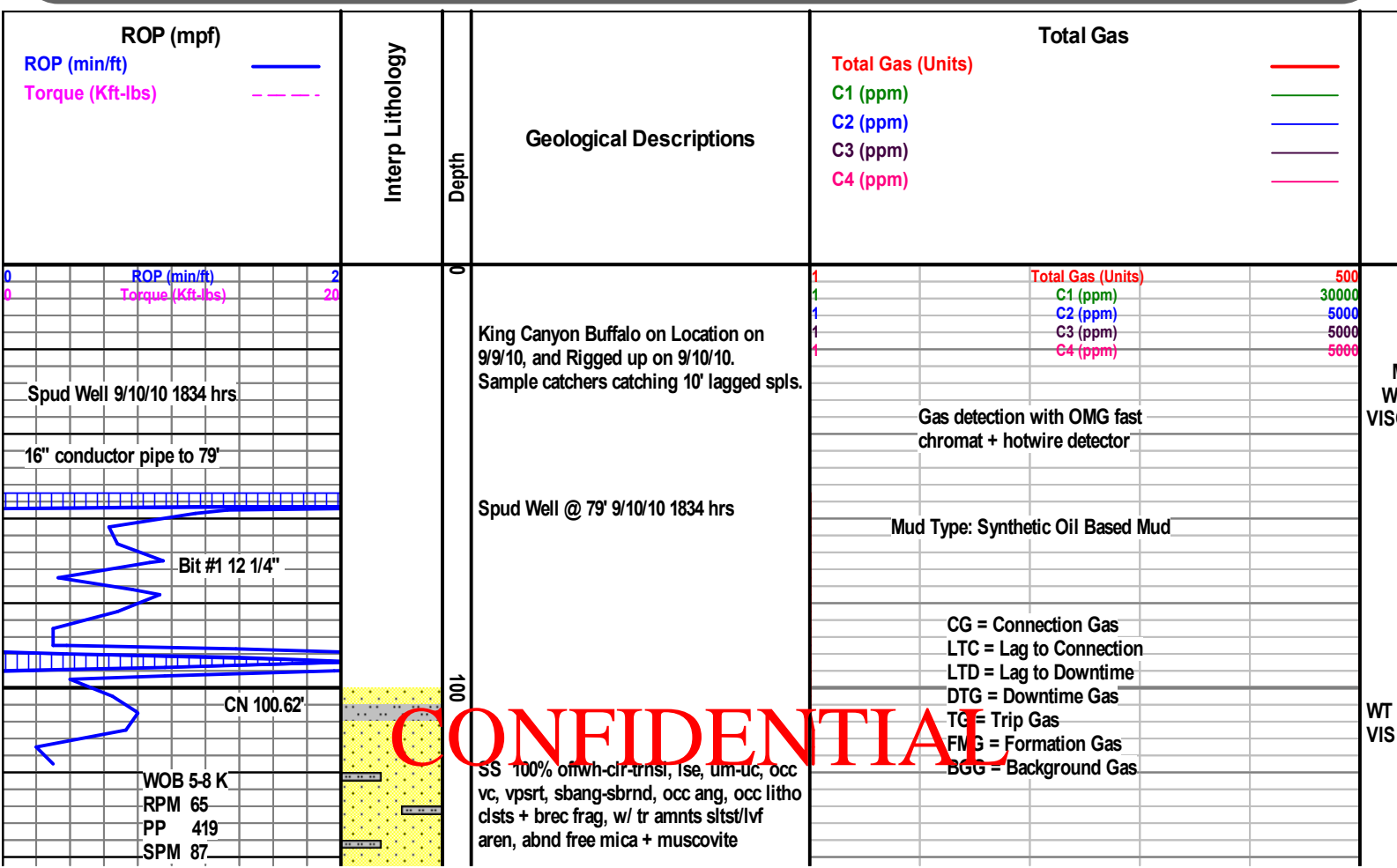
- Even
- Spotted
- Ques
- Dead

INTERVAL

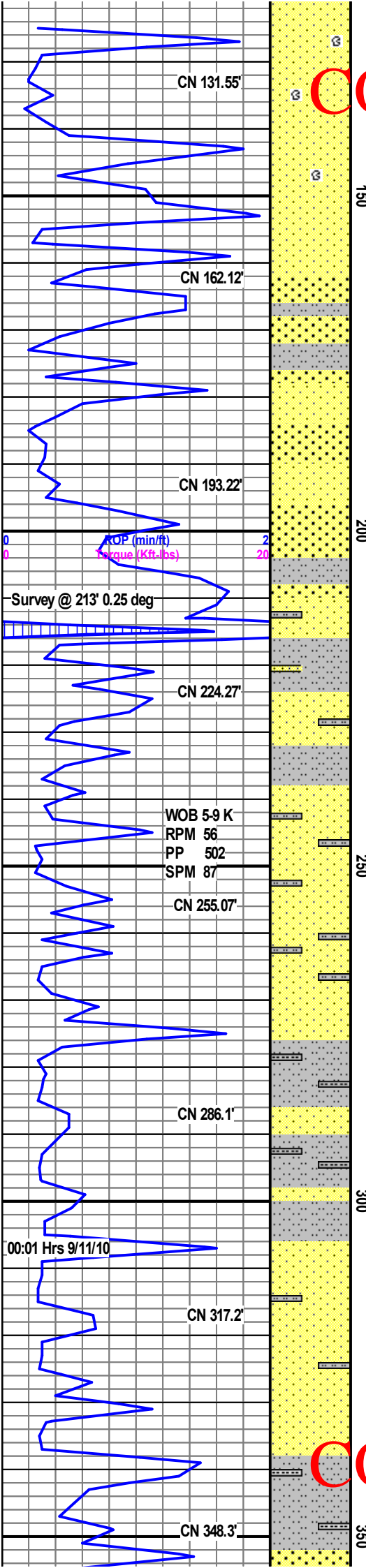
- Core
- Dst
- Casing

EVENT

- New bit
- Rft
- Sidewall
- Csg pnt



CONFIDENTIAL



SS 100% offwh-clr-trnsl, lse, um-uc, occ vc, vpsrt, sbang-sbrnd, occ ang, occ litho clst + brec frag, w/ tr amnts sltst/lvf aren, abnd free mica + muscovite

SS 90% offwh-clr-trnsl, lse, um-lvc, grdg downward, vpsrt, sbang-sbrnd, occ ang, rr litho clst, w/ SLTST 10% ltgy-offwh, sft-fri, abnd grdg to lvf aren, abnd mic, w/ abnd free mica + muscovite

SS 85% offwh-clr-trnsl, lse, um-lvc, grdg to um-lc, vpsrt, sbang-sbrnd, occ ang, rr litho clst, w/ SLTST 15% ltgy-offwh, sft-fri, abnd grdg to lvf aren, abnd mic, w/ abnd free mica + muscovite

SS 80% offwh-clr-trnsl, lse, um-lc, psrt, sbang-sbrnd, occ ang, tr litho clst, w/ SLTST 20% ltgy-offwh, sft-fri, mod grdg to lvf aren, abnd mic, w/ abnd free mica + muscovite

SS 100% clr-trnsl, occ ofwh, lse, um-lc, msrt, sbang-ang, mod litho clst/plag? w/ abnd free mica + muscovite, tr sltst aa

SS 50% clr-trnsl-ltgy, occ ofwh, lse, um-lc, msrt, sbang-sbrnd, occ litho clst/plag? w/ SLTST 50% ltgy-gy, sft-fri, occ grdg to lvf aren, abnd mic, occ w/ imbd qtz grns + lithoclst, w/ abnd free mica + muscovite

SS 100% clr-trnsl-ltgy, lse, um-lc grn, msrt, sbang-ang, w/ abnd chlor/mic incl in qtz grns, occ lithoclst, w/ tr sltst, w/ abnd free mica/musc

SLTST 55% ltgy-gy, sft-fri, occ lvfgrn aren, occ qtz grn incl, abnd mic, w/ SS 45% clr-trnsl-ltgy, lse, um-lc grn, lc-uvc ip, psrt, sbang-ang, occ sbrnd, occ

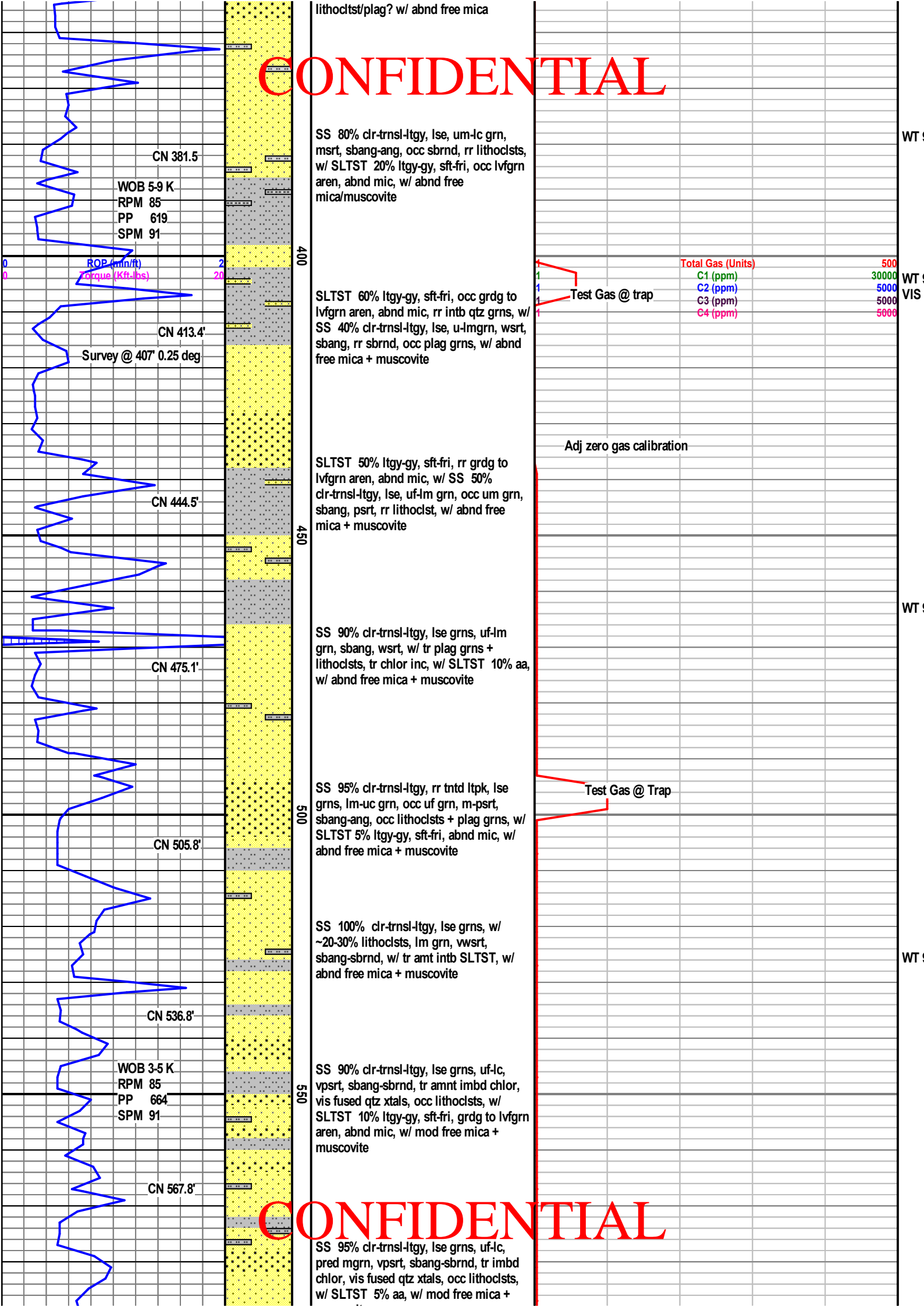
Total Gas (Units)	
C1 (ppm)	30000
C2 (ppm)	5000
C3 (ppm)	5000
C4 (ppm)	5000

Test gas @ trap

Test gas @ trap

CONFIDENTIAL

CONFIDENTIAL



lithoclst/plag? w/ abnd free mica

SS 80% cl-trns-ltgy, lse, um-lc grn, msrt, sbang-ang, occ sbrnd, rr lithoclsts, w/ SLTST 20% ltgy-gy, sft-fri, occ lvfgrn aren, abnd mic, w/ abnd free mica/muscovite

CN 381.5'
WOB 5.9 K
RPM 85
PP 619
SPM 91

ROP (min/ft)
Torque (Kft-lbs)

SLTST 60% ltgy-gy, sft-fri, occ grdg to lvfgrn aren, abnd mic, rr intb qtz grns, w/ SS 40% cl-trns-ltgy, lse, u-lm grn, wsrt, sbang, rr sbrnd, occ plag grns, w/ abnd free mica + muscovite

CN 413.4'
Survey @ 407' 0.25 deg

SLTST 50% ltgy-gy, sft-fri, rr grdg to lvfgrn aren, abnd mic, w/ SS 50% cl-trns-ltgy, lse, uf-lm grn, occ um grn, sbang, psrt, rr lithoclst, w/ abnd free mica + muscovite

CN 444.5'

SS 90% cl-trns-ltgy, lse grns, uf-lm grn, sbang, wsrt, w/ tr plag grns + lithoclsts, tr chlor inc, w/ SLTST 10% aa, w/ abnd free mica + muscovite

CN 475.1'

SS 95% cl-trns-ltgy, rr tntd ltpk, lse grns, lm-uc grn, occ uf grn, m-psrt, sbang-ang, occ lithoclsts + plag grns, w/ SLTST 5% ltgy-gy, sft-fri, abnd mic, w/ abnd free mica + muscovite

CN 505.8'

SS 100% cl-trns-ltgy, lse grns, w/ ~20-30% lithoclsts, lm grn, vwsrt, sbang-sbrnd, w/ tr amt intb SLTST, w/ abnd free mica + muscovite

CN 536.8'

WOB 3.5 K
RPM 85
PP 664
SPM 91

SS 90% cl-trns-ltgy, lse grns, uf-lc, vpsrt, sbang-sbrnd, tr amt imbd chlor, vis fused qtz xtals, occ lithoclsts, w/ SLTST 10% ltgy-gy, sft-fri, grdg to lvfgrn aren, abnd mic, w/ mod free mica + muscovite

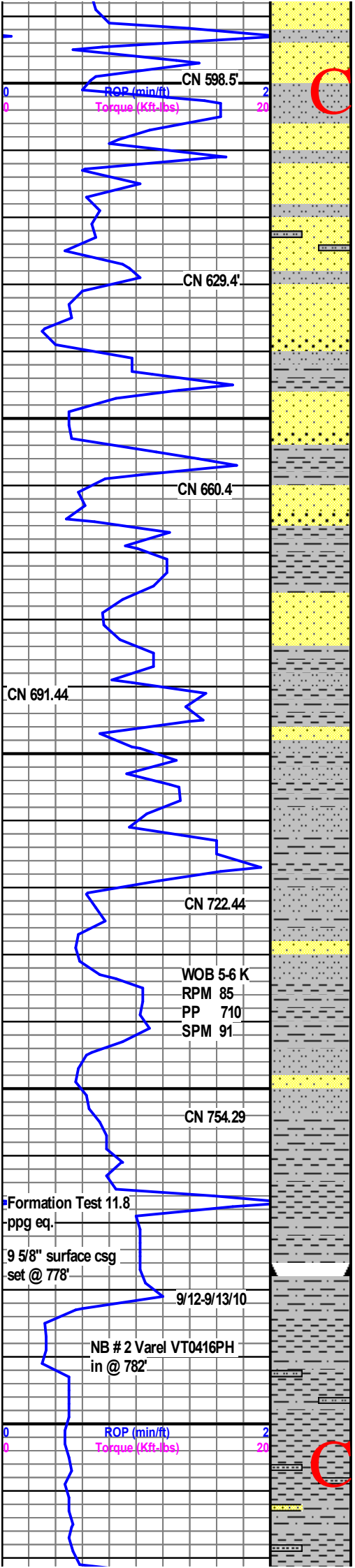
CN 567.8'

SS 95% cl-trns-ltgy, lse grns, uf-lc, pred mgrn, vpsrt, sbang-sbrnd, tr imbd chlor, vis fused qtz xtals, occ lithoclsts, w/ SLTST 5% aa, w/ mod free mica + muscovite

CONFIDENTIAL

CONFIDENTIAL

Total Gas (Units)	
C1 (ppm)	500
C2 (ppm)	30000
C3 (ppm)	5000
C4 (ppm)	5000



SS 90% cr-trnsl-ltgy, lse grns, uf-lm grn, occ lc grn, psrt, sbang-sbrnd, tr imbd chlor, mod lithoclst, w/ SLTST 10% ltgy-gy, sft-fri, abnd grdg to lvfgrn aren, abnd mic, w/ abnd free mica + muscovite

SLTST 30% ltgy-gy, sft-fri, abnd grdg to lvfgrn aren, abnd mic, w/ abnd free mica + muscovite SS 70% cr-trnsl-ltgy, lse, um-lc grn, msrt, sbang-ang, w/ abnd chlor/mic incl in qtz grns, occ lithoclst, w/ tr sltst, w/ abnd free mica/musc

SLTY CLYST 45% lt-med gy, sft-fri, incr frm, decr vf aren, incr cly mtx supt, cont vabnt mica, SS 55% cr-trnsl-ltgy, lse, uf-lm grn, msrt, sbang-ang, sig incr finer grain size, incr cly & slty mtx, abnd free mica/musc

SLTY CLYST 60% lt-med gy, sft-fri, incr frm, decr vf aren, incr cly mtx supt, cont vabnt mica, SHLY CLYST 30% ltgy-gy, frm-mod sft, sb plty-lmpy, sig incr shly, SS 10% cr-trnsl-ltgy, lse, uf-uvf grn, m-w srt, sbang, incr cly & slty mtx

SHLY CLYST 80% lt-med gy, sft-frm, plty-sb plty, decr decr slty, incr shly, decr cly, cont vabnt mica, SLTY CLYST 20% lt-med gy, sft-fri, incr frm, decr vf aren, incr cly mtx supt, cont vabnt mica, tr u-l vf gr SS strings

SHLY CLYST 75% lt-med gy, sft-frm, plty-sb plty, decr decr slty, incr shly, decr cly, cont vabnt mica, SLTY CLYST 25% lt-med gy, sft-fri, incr frm, decr vf aren, incr cly mtx supt, cont vabnt mica, Decr tr u-l vf gr SS strings

CLYST 85% ltgy, frm-sft, lmpy-sb plty, sig decr slty, sig incr cly, occ thn shly lam, SLTY CLYST 15% lt-med gy, sft-fri, incr frm, decr vf aren, incr cly mtx supt, cont vabnt mica

CLYST/SH 100% ltgy, frm-sft, lmpy-sbblk, occ grdg to slty sh, w/ thin lam sltst, abnd mic, abnd free mica, w/ tr free qtz grns

SS 60% cr-trnsl-ltgy, lse, lm-lvc grn



Test Gas @ Trap

TD FOR SURFACE CASING 782'

CONFIDENTIAL

Total Gas (Units)	
C1 (ppm)	500
C2 (ppm)	30000
C3 (ppm)	5000
C4 (ppm)	5000

WT
VIS

WT
VIS

WT
VIS

WT
VIS

WT
9.3/3

CONFIDENTIAL

CN 827.55

WOB 4-6 K
RPM 76
PP 411
SPM 100

SS 60% cr-trnsl-ltgy, lse, im-lvc grn, sbrnd, psrt, w/ ~ 15% lith clsts, shows grdg upward, w/ CLYST/SH 40% ltgy-gy, sft frm, sbblky, occ grdg to slty sh, abnd cly, grdg to clyst, w/ abnd mic tr fr, qtz grns

850

SS 90% cr-trnsl-ltgy, lse, occ fri clumps, um-lvc, vpsrt, sbang, w/ ~ 10% lith clsts, no vis grdg, w/ SLTST 10% ltgy-gy, sft-fri, grdg to lvfgrn aren, abnd mic

CN 891.30

SS 70% cr-trnsl-ltgy, lse, rr fri clumps, um-lvc, occ uf grn, vpsrt, sbang, w/ ~ 10% lith clsts, sl grdg downward, w/ SLTST 30% ltgy-gy, sft-fri, grdg to lvfgrn aren, abnd mic

Test Gas @ trap

900

SLTST 100% ltgy-gy, sft-frm, abnd grdg to lvfgrn aren, tr imbd lm-lvc qtz grns (poss ss lam?), abnd mic, w/ tr amnt SH/CLYST

CN 954.86

SLTST 90% ltgy-gy, sft-frm, occ grdg to lvfgrn aren, mod shly/cly ip, tr imbd qtz grns, abnd mic, w/ SH/CLYST 10% ltgy, sft, sbblky-lmpy, abnd mic, rr slty, occ in thin lam, w/ abnd free mica/musc

950

SLTST 100% ltgy-gy, sft-frm, rr grdg to lvfgrn aren, mod calc, abnd shly/cly, w/ gen incr slt, tr imbd qtz grns, abnd mic, w/ abnd free mica/musc

WOB 3-5 K
RPM 75
PP 428
SPM 100

SLTST 90% ltgy-gy, sft-frm, mod calc, abnd shly/cly, tr imbd qtz grns, abnd mic, w/ SS 10% cr-trnsl-ltgy, lse, lm-umgrn, occ lc grn, wsrt, sbang, poss sltst mtx supt, w/ tr amnt lvfgrn aren, w/ abnd mica/musc

1000

Total Gas (Units)	500
C1 (ppm)	30000
C2 (ppm)	5000
C3 (ppm)	5000
C4 (ppm)	5000

ROP (min/ft) 2
Torque (Kft.lbs) 20

CN 1018.57

SLTST/AREN 100% ltgy-gy, sft, fri, lvf grn, occ lfgrn qtz grns, wsrt, wcmnt w/ cly + calc, mtx supt, tr vis poro, abnd mic, w/ tr ss (lam?), rr shly, w/ abnd free mica/musc

1050

SLTST/AREN 100% ltgy-gy, sft, fri, lvf grn, occ lfgrn qtz grns, wsrt, wcmnt w/ cly + calc, mtx supt, tr vis poro, abnd

BGG 7-10u

CONFIDENTIAL

WT 9.3/9
VIS 72/70

CONFIDENTIAL

mic, w/ tr ss (lam?), rr shly, w/ abnd free mica/musc

CN 1082.19

SHLY CLYST 75% ltgy, sft, sbblky-lmpy, abnd mic, rr slty, occ in thin lam, w/ abnd free mica SLTST/AREN 25% ltgy-gy, sft, fri, lvf grn, occ lf grn qtz grns, wsrt, wcmt w/ cly + calc, mtx supt, tr vis poro, abnd mic

Test Gas @ trap

1100

SHLY CLYST 85% ltgy, sft, sbblky-lmpy, abnd mic, rr slty, occ in thin lam, w/ abnd free mica SLTST/AREN 15% ltgy-gy, sft, fri, lvf grn, occ lf grn qtz grns, wsrt, wcmt w/ cly + calc, mtx supt, tr vis poro, abnd mic

CN 1145.75

SHLY CLYST 80% ltgy, sft, sbblky-lmpy, abnd mic, rr slty, occ in thin lam, w/ abnd free mica SLTST/AREN 20% ltgy-gy, sft, fri, lvf grn, occ lf grn qtz grns, wsrt, wcmt w/ cly + calc, mtx supt, tr vis poro, abnd mic

WOB 2-5 K
RPM 75
PP 433
SPM 100

1150

SHLY CLYST 80% ltgy, sft, sbblky-lmpy, abnd mic, rr slty, occ in thin lam, w/ abnd free mica SLTST/AREN 20% ltgy-gy, sft, fri, lvf grn, occ lf grn qtz grns, wsrt, wcmt w/ cly + calc, mtx supt, tr vis poro, abnd mic

WT 9.4
VIS 71

1200

ROP (min/ft) 2
Torque (Kft.lbs) 20

CN 1209.63

SHLY CLYST 80% ltgy, sft, sbblky-lmpy, abnd mic, rr slty, occ in thin lam, w/ abnd free mica SLTST/AREN 20% ltgy-gy, sft, fri, lvf grn, occ lf grn qtz grns, wsrt, wcmt w/ cly + calc, mtx supt, tr vis poro, abnd mic

Total Gas (Units) 500
C1 (ppm) 30000
C2 (ppm) 5000
C3 (ppm) 5000
C4 (ppm) 5000

WT 9.4
VIS 72

1250

SHLY CLYST 85% ltgy, sft, sbblky-lmpy, abnd mic, rr slty, occ in thin lam, w/ abnd free mica SLTST/AREN 15% ltgy-gy, sft, fri, lvf grn, occ lf grn qtz grns, wsrt, wcmt w/ cly + calc, mtx supt, tr vis poro, abnd mic

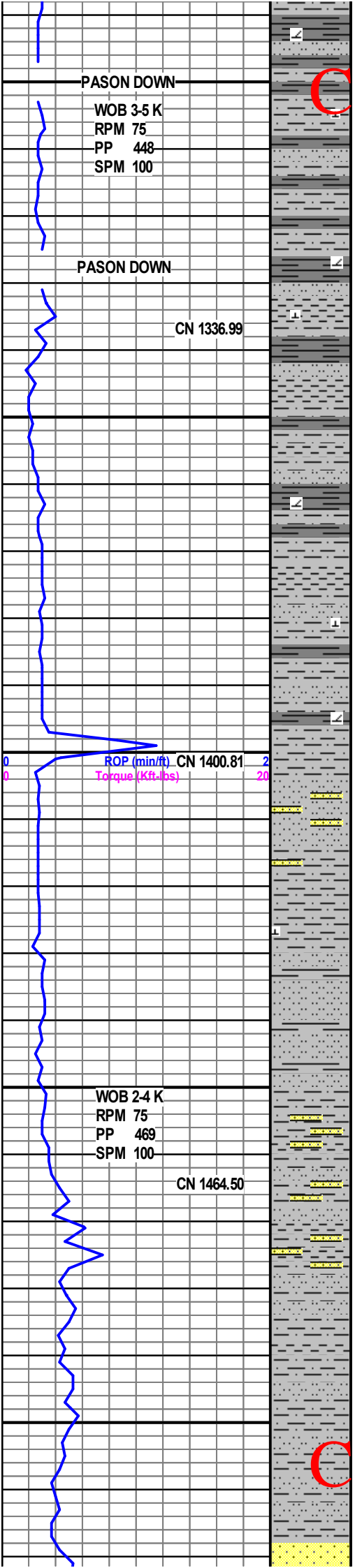
FG 113u

CN 1273.36

CONFIDENTIAL

SHLY CLYST 60% ltgy, sft, sbblky-lmpy, abnd mic, rr slty, occ in thin lam, w/ abnd free mica SLTST/AREN 15% ltav-cv, sft, fri, lvf grn, occ lf grn qtz

CONFIDENTIAL



grns, wsrt, wcmt w/ cly + calc, mtx supt, tr vis poro, abnd mic SH 25% med gy-lt gygrn, sft-vsft, plty, occ thn slty lam, vvs calc-dolic, NFOSC

SHLY CLYST 60% ltgy, sft, sbblky-lmpy, abnd mic, rr slty, occ in thin lam, w/ abnd free mica SLTST/AREN 5% ltgy-gy, sft, fri, lvf grn, occ lf grn qtz grns, wsrt, wcmt w/ cly + calc, mtx supt, tr vis poro, abnd mic SH 35% med gy-lt gygrn, sft-vsft, plty, occ thn slty lam, vvs calc-dolic, NFOSC

SHLY CLYST 60% ltgy, sft, sbblky-lmpy, abnd mic, rr slty, occ in thin lam, w/ abnd free mica SLTST/AREN 5% ltgy-gy, sft, fri, lvf grn, occ lf grn qtz grns, wsrt, wcmt w/ cly + calc, mtx supt, tr vis poro, abnd mic SH 35% med gy-lt gygrn, sft-vsft, plty, occ thn slty lam, vvs calc-dolic, NFOSC

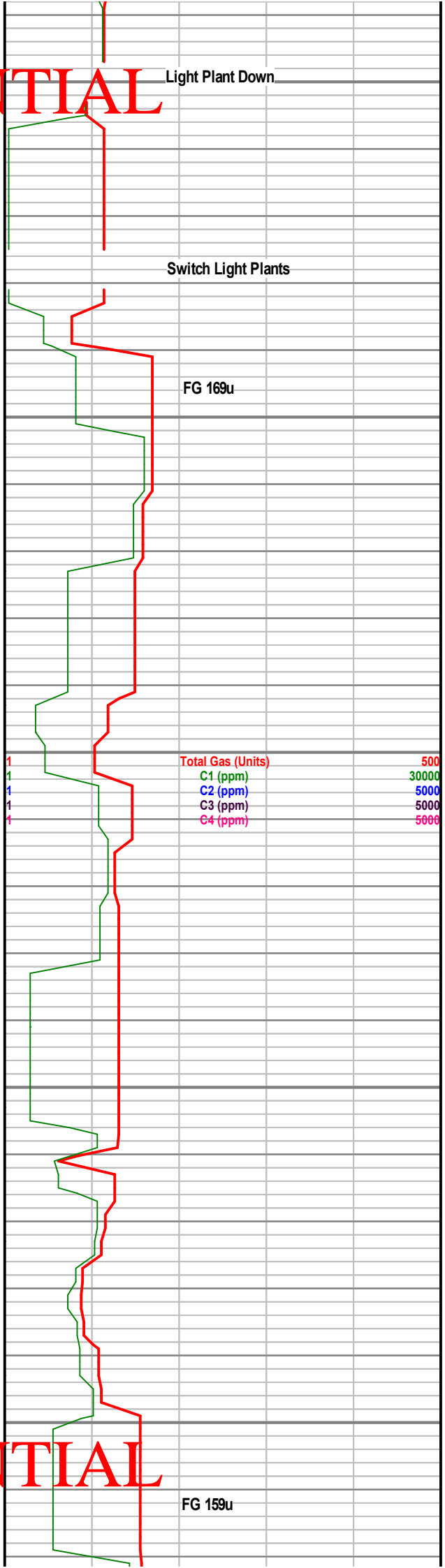
SS STRINGERS 5% ltgy-off wh, u-l vf gr, cly mtx supt, occ slt mtx supt, sft-fri, f-p int grn por, slty thru SLTST 40% ltgy-vltgy, sft-fri, cly & shly mtx supt, occ vthn aren strngs, bnt mic SHLY CLYST 55% ltgy, sft, sbblky-lmpy, abnd mic, rr slty, occ in thin lam, w/ abnd free mica

SLTST 60% ltgy-vltgy, sft-fri, cly & shly mtx supt, occ vthn aren strngs, bnt mic SHLY CLYST 40% ltgy, sft, sbblky-lmpy, abnd mic, rr slty, occ in thin lam, w/ abnd free mica

SS STRINGERS 20% ltgy-off wh, u-l vf gr, occ lm gr, incr lse grns, pred cly mtx supt, occ slt mtx supt, sft-fri, f-g int grn por, NFOSC SLTST 60% ltgy-vltgy, sft-fri, cly & shly mtx supt, occ vthn aren strngs, bnt mic SHLY CLYST 20% ltgy, sft, sbblky-lmpy, abnd mic, rr slty, occ in thin lam, w/ abnd free mica

SLTY CLYST 60% ltgy-vltgy, occ crm, sft-fri, lmpy, vabnt mica, occ slty strngs, grdgy shly thru, SH 40% ltgy-med gy, frm, plty-sb plty, rthy-sm tex, occ dolic vsl calc, inthd w clyst & slt

SS 85% transl-off wh-lt-med gy, pred



WT 9.4 VIS 68

WT 9.5 VIS 66

CONFIDENTIAL

CONFIDENTIAL

CN 1528.18

lm-uf gr, ang, occ uf-uvf gr, sbang, tr lc gr, ang, pred lse grns, f-p srt, occ sm fri clust w/ slty mtz supt, NFOSC, SLTST 15% ltgy-vltgy, sft-fri, cly & shly mtz supt, occ vth aren strngs, bnt mic

1550

SH 75% lt-med gy, frm-sft, plty, sm-rthy tex, pred n calc, tr dolc, intbd w/ SLTST 15% ltgy-vltgy, sft-fri, cly & shly mtz supt, occ vthn aren strngs, bnt mic SLTY CLYST 10% ltgy-vltgy, occ crm, sft-fri, lmpy, vabnt mica, occ vf aren strngs

1600

SS 45% transl-off wh-lt-med gy, pred lm-uf gr, ang, occ uf-uvf gr, sbang, incr tr lc gr, ang, pred lse grns, f-p srt, occ sm fri clust w/ slty mtz supt, NFOSC, SLTST 40% ltgy-vltgy, sft-fri, cly & shly mtz supt, occ vthn aren strngs, abnt mic SLTY CLYST 15% ltgy-vltgy, occ crm, sft-fri, lmpy, vabnt mica, occ vf aren strngs

1650

SLTY CLYST 60% ltgy-vltgy, occ crm, sft-fri, lmpy, vabnt mica, occ slty strngs, grd g shly thru, SH 40% ltgy-med gy, frm, plty-sb plty, rthy-sm tex, occ dolc-vsl calc, intbd w clyst & sltst

1700

SLTY CLYST 50% ltgy-vltgy, occ crm, sft-fri, lmpy, vabnt mica, occ slty strngs, grd g slty-shly thru, SH 50% ltgy-med gy, frm, plty-sb plty, rthy-sm tex, occ dolc-vsl calc, intbd w clyst & sltst

1750

SH 75% ltgy-med gy, frm, plty-sb plty, rthy-sm tex, occ dolc-vsl calc, intbd w clyst & sltst SLTY CLYST 25% ltgy-vltgy, occ crm, sft-fri, lmpy, vabnt mica, occ slty strngs, grd g shly thru

SLTST 55% ltgy-gy, vltgy-crm, sft-vsft, lmpy, pred cly mtz supt, vsl clc-nlc, occ grd g vfaren, tr THN SS STRINGERS uf-lm, fri, cly mtz supt, SH 45% ltgy-med gy, frm, plty-sb plty, rthy-sm tex, occ dolc-vsl calc, intbd w clyst & sltst

SH 85% ltgy-med gy, frm, plty-sb plty, rthy-sm tex, occ dolc-vsl calc, intbd w clyst & sltst SLTY CLYST 15% ltgy-vltgy, occ crm, sft-fri, lmpy, vabnt mica, occ slty strngs, grd g shly thru

PASON DOWN

CN 1591.64

ROP (min/ft) 2
Torque (Kft.lbs) 20
WOB 3-5 K
RPM 75
PP 568
SPM 100

CN 1655.31

CN 1719.22

WOB 3-5 K
PDM 82

Switch Light Plants

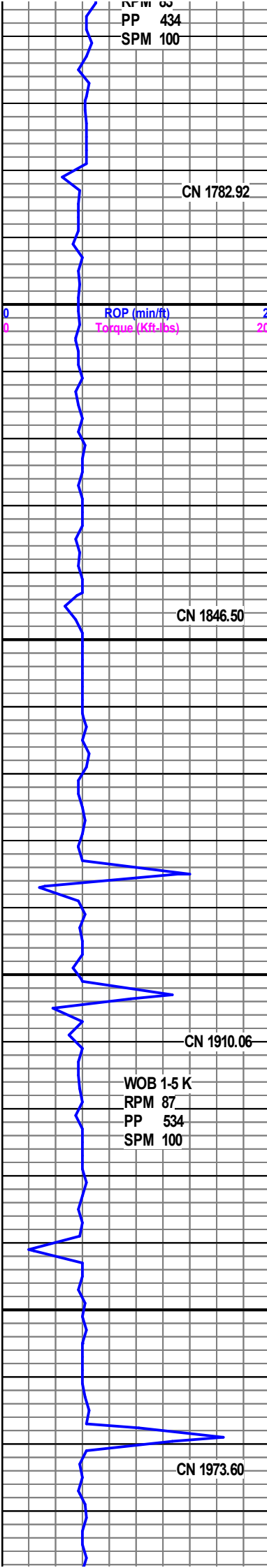
Total Gas (Units) 500
C1 (ppm) 30000
C2 (ppm) 5000
C3 (ppm) 5000
C4 (ppm) 5000

WT 9.5
VIS 63

WT 9.5
VIS 61

CONFIDENTIAL

WT



SH 65% ltgy-med gy, frm, plty-sb plty, rthy-sm tex, occ doloc-vsl calc, intbd w clyst & sltst SLTY CLYST 35% ltgy-vltgy, occ crm, sft-fri, lmpy, vabnt mica, occ slty strngs, grdg shly thru

SH 75% ltgy-med gy, frm, plty-sb plty, rthy-sm tex, occ doloc-vsl calc, intbd w clyst & sltst SLTY CLYST 25% ltgy-vltgy, occ crm, sft-fri, lmpy, vabnt mica, occ slty strngs, grdg shly thru

SS 35% off wh-lt-med gy, pred lvf-lf gr, sbang, pred slty mtx supt, f-w srt, TT, NFOSC, SLTST 55% ltgy-vltgy, sft-fri, cly & shly mtx supt, occ vthn aren strngs, abnt mic SLTY CLYST 10% ltgy-vltgy, occ crm, sft-fri, lmpy, vabnt mica, occ vf aren strngs

SH 75% ltgy-med gy, frm, plty-sb plty, rthy-sm tex, occ doloc-vsl calc, intbd w clyst & sltst SLTY CLYST 25% ltgy-vltgy, occ crm, sft-fri, lmpy, vabnt mica, occ slty strngs, grdg shly thru

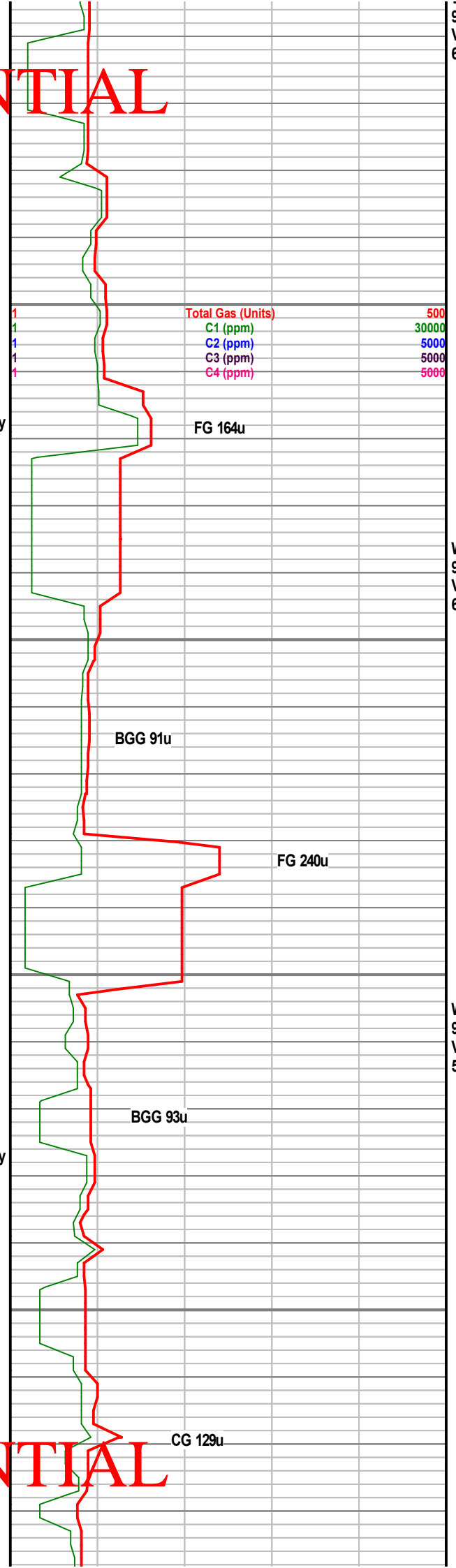
SLTST 75% ltgy-gy-crm, sft-fri, pred cly mtx supt, lmpy, incr calc, occ thn SS STRINGERS ltg-crm, uvf-lf gr, cly mtx supt, grdg slty thru, TT, SLTY CLYST 25% ltgy-vltgy, occ crm, sft-fri, lmpy, vabnt mica, occ slty strngs, grdg shly thru, CHALK stringers, wh-brite wh, mic-cr xl MS, sft, chiky tex, thn, TT

SH 70% ltgy-med gy, frm, plty-sb plty, rthy-sm tex, occ doloc-vsl calc, intbd w clyst & sltst SLTY CLYST 30% ltgy-vltgy, occ crm, sft-fri, lmpy, vabnt mica, occ slty strngs, grdg slty-shly thru

SLTST 85% ltgy-gy-crm, sft-fri, pred cly mtx supt, lmpy, incr calc, occ thn SS STRINGERS ltg-crm, uvf-lf gr, cly mtx supt, grdg slty thru SH 15% ltgy-med gy, frm, plty-sb plty, rthy-sm tex, occ doloc-vsl calc, intbd w clyst & sltst

SS STRINGS 5% wh-vltgy-crm, uf-lf gr, pred cly mtx supt, thn, grdg slty-shly, SLTST 75% ltgy-gy-crm, sft-fri, pred cly mtx supt, lmpy, incr calc, SH 20% ltgy-med gy, frm, plty-sb plty, rthy-sm tex, occ doloc-vsl calc, intbd w clyst & sltst

SH 70% ltgy-med gy, frm, plty-sb plty, rthy-sm tex, occ doloc-vsl calc, intbd w clyst & sltst SLTY CLYST 20% ltgy-vltgy, occ crm, sft-fri, lmpy, vabnt mica, occ slty strngs, grdg shly thru



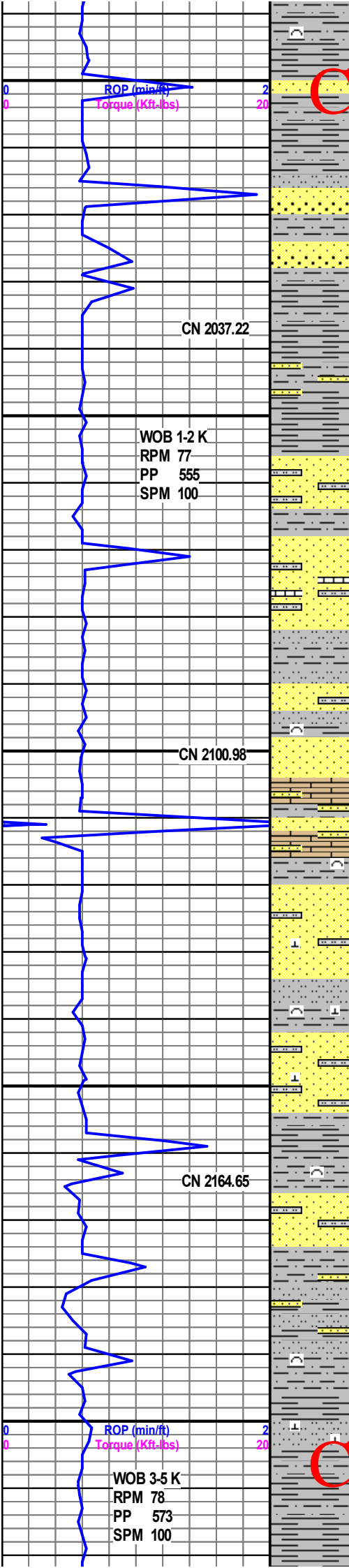
9.5 VIS 61

WT 9.5 VIS 60

WT 9.5 VIS 58

CONFIDENTIAL

CONFIDENTIAL



30% ltgy-vltgy, occ crnt, slit-fri, lmpy, vabnt mica, occ slty strngs, grdg slty-shly thru

SS 75% slr-trnsl-wh-ltgy, un-uf-gr, arg-sbrnd, pred ls grns, occ lithoclasts, occ fri cly & slty mxt supt clust, f-p intgrn por, NFOSC, SLTY CLYST 50% ltgy-vltgy, sft-fri, lmpy, vabnt mica, SH 35%

SS 25% ltgy-off-wh-transl, lvc-um gr, ang, lse grns, no clust, vp srt, occ euhed calcite, NFOSC, SLTST 25% SH 50%

SH 70% ltgy-med-gy, frm, plty-sb plty, rthy-sm tex, occ dolc-vsl calc, intbd w clyst & sltst SLTY CLYST 30% ltgy-vltgy, sft-fri, lmpy, vabnt mica

SS 50% ltgy-gy, fri, lvf-uvfgrn, sbang-sbrnd, wsrt, pred mxt supt (cly/sltst mxt), w/ SS 20% clr-trnsl-ltgy, l-umgrn, sbang, msrt, pred mxt supt, w/ slty/aren mxt, w/ SLTST 30% ltgy-gy, sft-frm, shly-cly to lvf aren, abnd mic, v calc ip, w/ tr chlkl/s strngs, tr amnt sh

SS 60% ltgy-clr-trnsl, lse-fri, occ grn clmps, lm-lc grn, psrt, sbang, pred mxt supt in sltst/aren mxt, w/ SLTST 40% ltgy-gy, sft-frm, fri, abnd lvfgrn aren grdg to slty sh, tr foss csts, abnd mic, abnd calc ip, w/ tr amt calc/chlk

LS 15% offwh-crm-ltgy, frm-modhd, chlky, micxn, tr vis foss frag, lm-uc qtz grn incl, intb w/ ss/ sltst, w/ SS 55% clr-trnsl-ltgy, lm-uc grn, p-msrt, pred sltst/cly mxt supt, grdg to grn supt w/ minor mxt cmpt, w/ SLTST/SH 30% ltgy-gy, sft-frm, mod fri ip, abnd lvfgrn aren grdg to sh, abnd calc, intb in thin lam w/ ss, abnd mic, tr foss cast

SLTST/CLYST 55% ltgy-gy, sft-frm, occ fri, lvfgrn aren grdg to shly/cly sltst, occ intb w/ ss, calc ip, w/ SS 40% ltgy-clr-trnsl, fri, lse, lm-uc grn, occ uf grn, pred sltst mxt supt, rr calc mxt supt, w/ abnd free mica/muscovite

SLTST 60% ltgy-gy, sft-frm, occ fri, lvfgrn aren grdg to shly/cly sltst, occ intb w/ ss, calc ip, w/ SH 20% ltgy, frm-modhd, sbsplnty-sbplty, rr slty, rr calc, w/ SS 20% aa

SH 60% ltgy-gy, sft-frm, sbsplnty-plty, rthy-sbwxy, occ slty, abnd mic mica, w/ SLTST 40% ltgy-gy, sft, fri ip, intb in thin lam w/ sh, abnd mic, v calc ip

Total Gas (Units)	
C1 (ppm)	500
C2 (ppm)	30000
C3 (ppm)	5000
C4 (ppm)	5000
	5000

WT 9.5
VIS 58

FMG 145u

FMG 142u

FMG 93u

BGG 70-80u

Total Gas (Units)	
C1 (ppm)	500
C2 (ppm)	30000
C3 (ppm)	5000
C4 (ppm)	5000
	5000

WT 9.5
VIS 59

WT

CONFIDENTIAL

CN 2228.48

SH 100% ltgy-gy, sft frm, sbsplnty-plty, sbwxy, occ slty, abnd mic mica, w/ minor lam calc sltst aa

CG 99u

CONFIDENTIAL

2250

SH 100% ltgy-gy, sft frm, sbsplnty-plty, sbwxy, occ slty, abnd mic mica, rr calc, w/ minor lam calc, w/ tr SLTST ltgy-gy, lvfgrn aren, abnd mica, calc ip

CN 2292.4

LS 5% ltgy-crm, sft frm, chlky, crptdn, w/ occ foss frag, w/ SH 95% ltgy-gy, sft frm, sbsplnty-plty, sbwxy, occ slty, abnd mic mica, rr calc, w/ minor lam ls, w/ STLST aa

2300

CN 2324.36

SH 100% ltgy-gy, sft frm, sbsplnty-plty, sbwxy, occ slty, abnd mic mica, rr calc, w/ minor lam calc, w/ tr SLTST ltgy-gy, lvfgrn aren, abnd mica, calc ip

TD @ 2343.8' MD

23

CONFIDENTIAL