

# BAKER HUGHES

Baker Atlas



FILE NO: \_\_\_\_\_ COMPANY: **BRIDGE ENERGY**  
 WELL: **KORN 1-22**  
 FIELD: **WILDCAT**  
 COUNTY: \_\_\_\_\_ PAYETTE: \_\_\_\_\_ STATE: **IDAHO**

APN NO: **11-075-20014**  
 VGR: **3.87**  
 LOCATION: **807' PNL & 507.84' PNL NE/AM**  
 SEC: **22** TWP: **2N** RGE: **4E**  
 OTHER SERVICES: **NUAC 5MC**

PERMANENT DATUM: \_\_\_\_\_ G.L. \_\_\_\_\_ ELEVATION: **2359 FT**  
 LOG MEASURED FROM: \_\_\_\_\_ K.B. \_\_\_\_\_ ABOVE P.D.  
 DRILL MEAS. FROM: \_\_\_\_\_ K.B. \_\_\_\_\_  
 ELEVATIONS: **KB 2376 FT**  
**DF**  
**OL 2359 FT**

DATE	14-SEP-2010	
RUN	TRIP	1
SERVICE ORDER	089628	
DEPTH DRILLER	2343 FT	
DEPTH LOGGER	2349 FT	
BOTTOM LOGGED INTERVAL	2287 FT	
TOP LOGGED INTERVAL	0 FT	
CASING DRILLER	9.625 IN @ 774 FT	
CASING LOGGER	778 FT	
BR. SIZE	8.75 IN	
TYPE OF FLUID IN HOLE	S.B.M.	
DENSITY	9.5 LB/G	63 S
PH	NA	
FLUID LOSS	NA	
SOURCE OF SAMPLE	CIRCULATION TANK	
RM AT MEAS. TEMP.	NA	
RMF AT MEAS. TEMP.	NA	
RMG AT MEAS. TEMP.	NA	
SOURCE OF RMF	NA	
RM AT BHT	NA @ 128 DEGF	
TIME SINCE CIRCULATION	11 HOURS	
MAX. RECORDED TEMP.	128 DEGF	
EQUIP. NO.	LOCATION	FALLON, NV
RECORDED BY	VENCIMAK	
WITNESSED BY	J.G. HOOK/RON RICHARDS	

IN MAKING INTERPRETATIONS OF LOGS OUR EMPLOYEES WILL GIVE CUSTOMER THE BENEFIT OF THEIR BEST JUDGEMENT. BUT SINCE ALL INTERPRETATIONS ARE OPINIONS BASED ON INFERENCES FROM ELECTRICAL OR OTHER MEASUREMENTS, WE CANNOT, AND WE DO NOT GUARANTEE THE ACCURACY OR CORRECTNESS OF ANY INTERPRETATION. WE SHALL NOT BE LIABLE OR RESPONSIBLE FOR ANY LOSS, COST, DAMAGES, OR EXPENSES WHATSOEVER INCURRED OR SUSTAINED BY THE CUSTOMER RESULTING FROM ANY INTERPRETATION MADE BY ANY OF OUR EMPLOYEES.

**REMARKS**

RUN 1 TRIP 1: **CVOL COMPUTED USING 5.50" CASING (EVOL, CVOL UNITS IN CUBIC FEET)  
 CALIPER VERIFIED IN CASING**

**MATRIX = SANDSTONE  
 RHO M = 2.85 G// RHO F = 0.9 G/CC  
 DELT M = 51.3 MIC/FT**

**STANDOFFS RUN ON HDIL  
 BOWSPRING DE-CENTRALIZER RUN FRO CN**

**THANKS FOR USING BAKER ATLAS  
 CREW: FLEMING / DANKEPSEN / HAYCOCK  
 RIG: RAZORBACK**

**CONFIDENTIAL**

EQUIPMENT DATA						
RUN	TRIP	TOOL	SERIES NO.	SERIAL NO.	POSITION	
1	1	LOG	84450	10381370	LOG	

CONFIDENTIAL

1	1	TTRM	3981KB	110084084	FREE
1	1	MYS	3514KB	10187891	FREE
1	1	DSL	1328KB	10203301	DE-CENTRALIZED
1	1	CN	2446KB	10302048	DE-CENTRALIZED
1	1	ZDL	2214KB	10122352	DE-CENTRALIZED / BAD
1	1	DKOANT	5838KB	10143888	DOUBLE KNUCKLE
1	1	HDL	1515EA / MA	10340485 / 10089432	0.7" STANDOFF
1	1	CFMT	4341EA	10328303	4-ARM CENTRALIZED
1	1	XMAC	1877EA / 1878MC	10337574 / 10338828	CENTRALIZED
1	1	ISO	1678PB	10200507	FREE
1	1	XMAC	1878EA / 1878FA	10108348 / 370873	CENTRALIZED
1	1	CFMT	4341EA	10162851	4-ARM CENTRALIZED

## MAIN LOG 5"/100FT SCALE

ECLIPS 6.11 Aug 06, 2010

Wed Sep 15 01:58:21 2010

Parplot /main/62

Cplot

Pdf\_Cpp /main/16

Fileview 5.50

### PARAMETER AND FILTER SUMMARY REPORT

File: /data/505628/m771104.prm  
 LOGGING MODE: DEPTH      DIRECTION: UP  
 TOP DEPTH: 749.250 ft      BOTTOM DEPTH: 2338.750 ft

#### SYMMETRIC FILTER

MEASUREMENT TYPE	PARAMETER	VALUE	UNITS	INTERVAL (ft)	
Y AXIS CALIPER	FILTER ( )	medium (1)		TOP	BOTTOM
TENSION	FILTER ( )	medium (1)		"	"
GR	FILTER ( )	medium (1)		"	"
CN	FILTER ( )	medium (1)		"	"
CALIPER	FILTER ( )	medium (1)		"	"
	FILTER (.h)	medium (1)		"	"
	FILTER (.l)	medium (1)		"	"
ZDL MED RES	FILTER (hrd1*)	medium		"	"
	FILTER (hrd1a*)	medium		"	"
	FILTER (hrd2*)	medium		"	"
	FILTER (hrd2a*)	medium		"	"

#### BOREHOLE & CEMENT

MEASUREMENT TYPE	PARAMETER	VALUE	UNITS	INTERVAL (ft)	
CASING - BOREHOLE & CEMENT VOLUME	CASING O.D.	5.500	1m	TOP	BOTTOM
	CASING THICKNESS	0.000	1m	"	"
BIT SIZE	BIT SIZE	8.750	1m	"	"
BOREHOLE CORR DIAMETER SOURCE	CALIPER/FIXED DIA. (cnbh*)	USE CALIPER		"	"
	CALIPER/FIXED DIA. (mbh*)	USE CALIPER		"	"
BOREHOLE CORR DIAMETER	FIXED DIAMETER (cnbh*)	8.750	1m	"	"
	FIXED DIAMETER (mbh*)	8.750	1m	"	"
BH MUD RESISTIVITY SOURCE	RMD SOURCE (HDL)	OIL BASE MUD		"	"

#### CN PROCESSING

MEASUREMENT TYPE	PARAMETER	VALUE	UNITS	INTERVAL (ft)	
2448 CN MATRIX	2448 MATRIX	SANDSTONE		TOP	BOTTOM
CN SALINITY CORRECTION	SALINITY	0	ppm	"	"
CN CASING & CEMENT CORRECTION	CORRECTION	OFF		"	"
	BIT SIZE (HDL) (CNG)	12.250	1m	"	"

#### ZDL PROCESSING

MEASUREMENT TYPE	PARAMETER	VALUE	UNITS	INTERVAL (ft)	
ZDL MED RES	FILTER (hrd1*)	medium		"	"

CONFIDENTIAL

DENSITY POROSITY RHOADPTX 2.650 10P  
 RHOfluid 0.600 g/cm3 11  
 ZDL DENK TRACKING ON 11

# CONFIDENTIAL

MEASUREMENT TYPE	PARAMETER	VALUE	UNITS	INTERVAL (ft)	
HOIL TEMPERATURE CORRECTION	TEMP CORR SOURCE	USE RXTMP		TOP	BOTTOM
ADAPTIVE BOREHOLE CORRECTION	ABC PROCESSING	ON		11	11
	ABC to CALCULATE	STANDOFF		11	11
	STANDOFF	0.70	1m	11	11
	TOOL POSITION	ECCENTERED		11	11
	Road MULTIPLIER	1.000		11	11

## CURVE DESCRIPTION REPORT

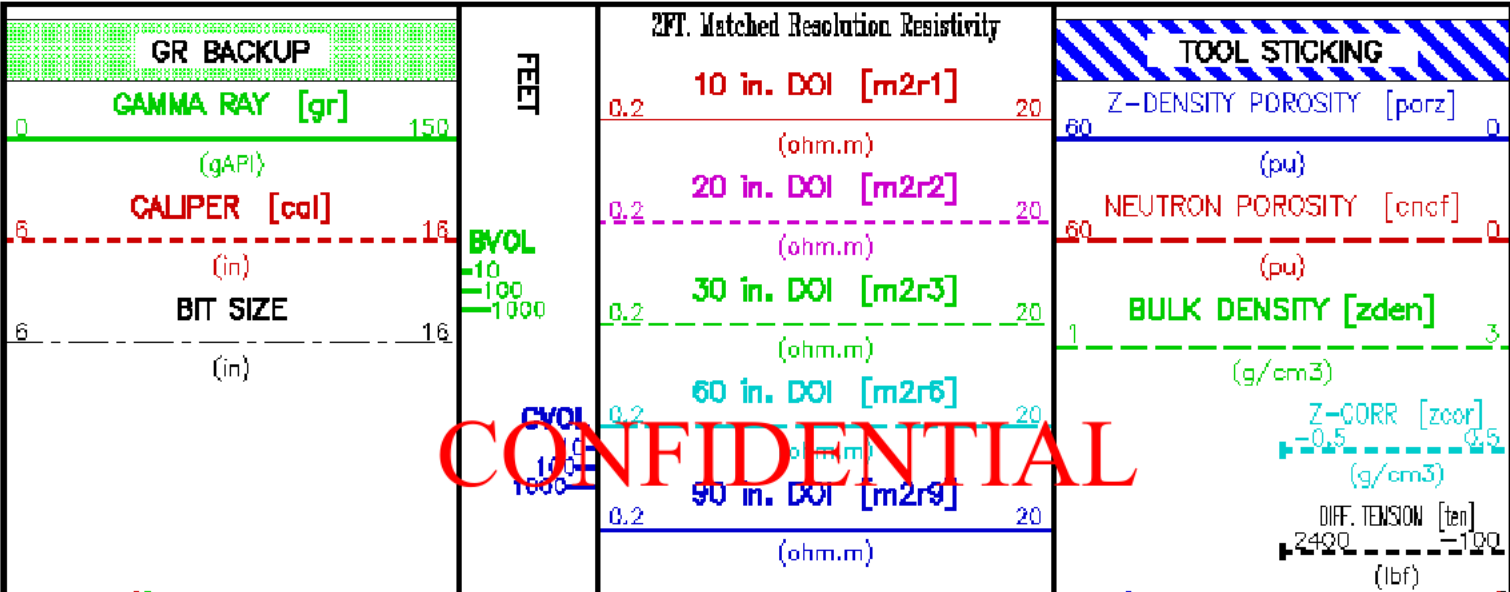
CURVE NAME	CREATION DATE	CURVE DESCRIPTION
F1:BIT	Sep 15 00:49:18 2010	BIT SIZE
F1:BYOL	Sep 15 00:49:18 2010	BOREHOLE VOLUME
F1:CAL	Sep 15 00:49:18 2010	CALIPER
F1:CMCF	Sep 15 00:49:18 2010	FIELD NORMALIZED COMPENSATED NEUTRON POROSITY
F1:CVOL	Sep 15 00:49:18 2010	CEMENT VOLUME
F1:GR	Sep 15 00:49:18 2010	GAMMA RAY
F1:M2R1	Sep 15 00:49:18 2010	VERTICAL 2-FOOT RESOLUTION MATCHED RESISTIVITY, 10-INCH DOI
F1:M2R2	Sep 15 00:49:18 2010	VERTICAL 2-FOOT RESOLUTION MATCHED RESISTIVITY, 20-INCH DOI
F1:M2R3	Sep 15 00:49:18 2010	VERTICAL 2-FOOT RESOLUTION MATCHED RESISTIVITY, 30-INCH DOI
F1:M2R6	Sep 15 00:49:18 2010	VERTICAL 2-FOOT RESOLUTION MATCHED RESISTIVITY, 60-INCH DOI
F1:M2R9	Sep 15 00:49:18 2010	VERTICAL 2-FOOT RESOLUTION MATCHED RESISTIVITY, 90-INCH DOI
F1:PORZ	Sep 15 00:49:18 2010	POROSITY FOR SELECTABLE MATRIX
F1:TEN	Sep 15 00:49:18 2010	DIFFERENTIAL TENSION
F1:ZCOR	Sep 15 00:49:18 2010	DENSITY CORRECTION
F1:ZDEN	Sep 15 00:49:18 2010	FORMATION BULK DENSITY

## CURVE MEASURE POINT OFFSET

CURVE	OFFSET (ft)	CURVE	OFFSET (ft)	CURVE	OFFSET (ft)	CURVE	OFFSET (ft)
BIT	0.00	M2R1	52.25	M2R6	52.25	ZDEN	78.50
CAL	79.00	M2R2	52.25	PORZ	78.50		
CMCF	89.50	M2R3	52.25	TEN	0.00		
GR	96.58	M2R6	52.25	ZCOR	78.50		

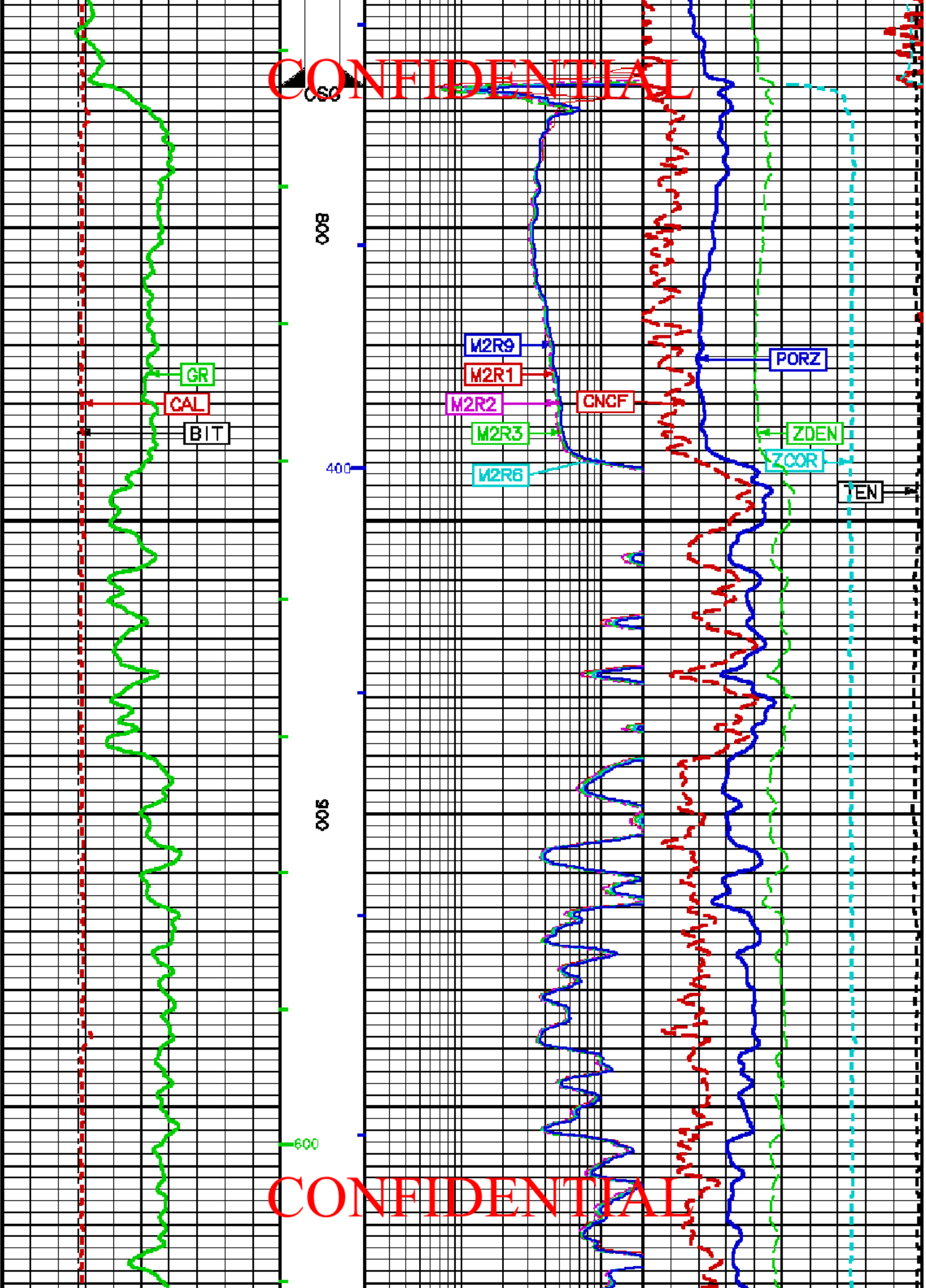
Presentation : rta4232:/dat/a/395828/R\_SLAM\_MAIN.pdf [3"/100' Scale]  
 Plot Interval : 780 - 2358.75 Feet

Data File 1 : F1 : rta4232:/dat/a/395828/m77104.aht  
 Created On : Sep 15 00:49:18 2010  
 Company : BRIDGE ENERGY  
 Well : KORN 1-22  
 Field : WILDCAT  
 File Interval : 839.25 - 2358.75 Feet  
 Out : m7711



# CONFIDENTIAL

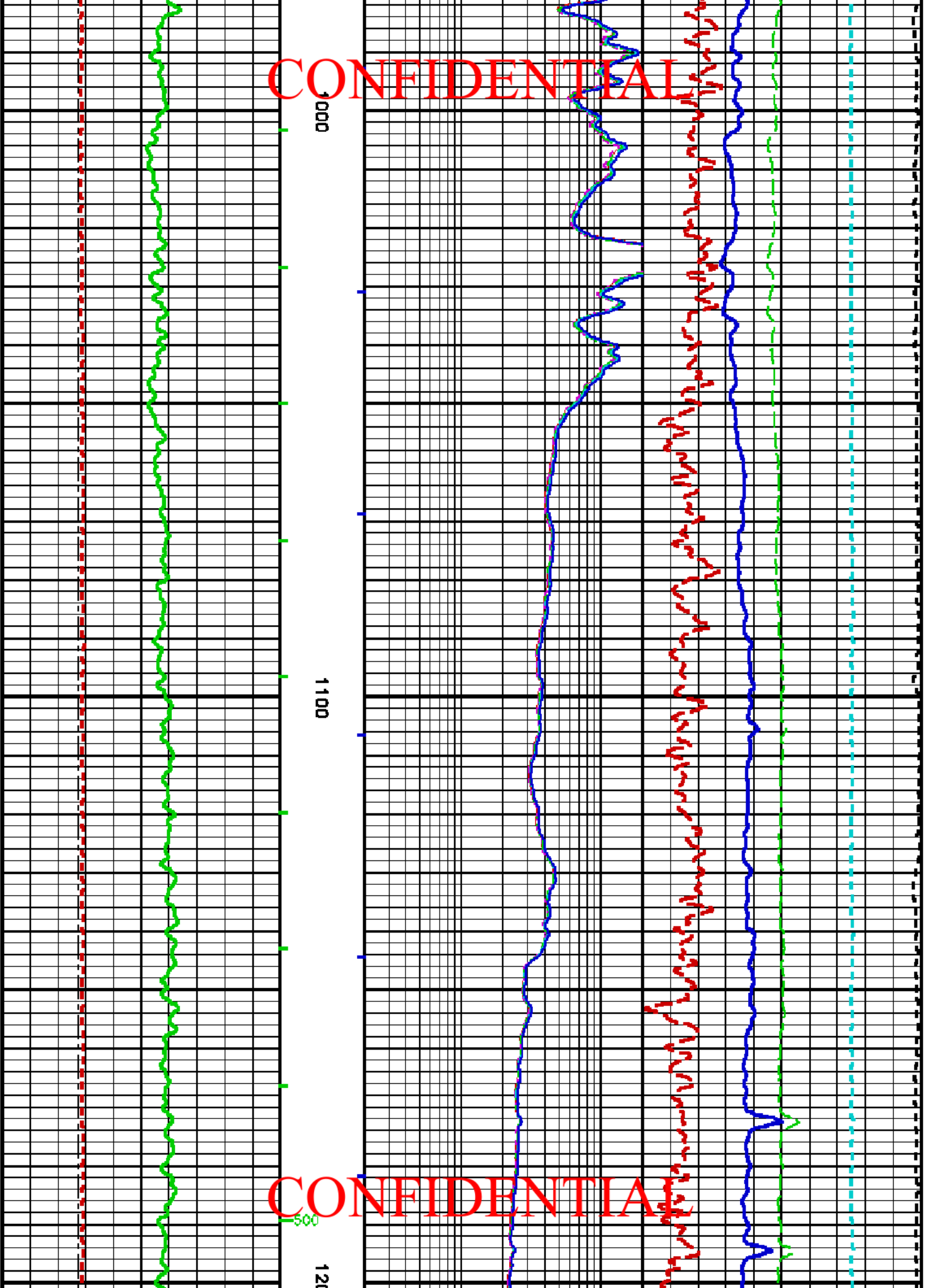
CONFIDENTIAL



CONFIDENTIAL

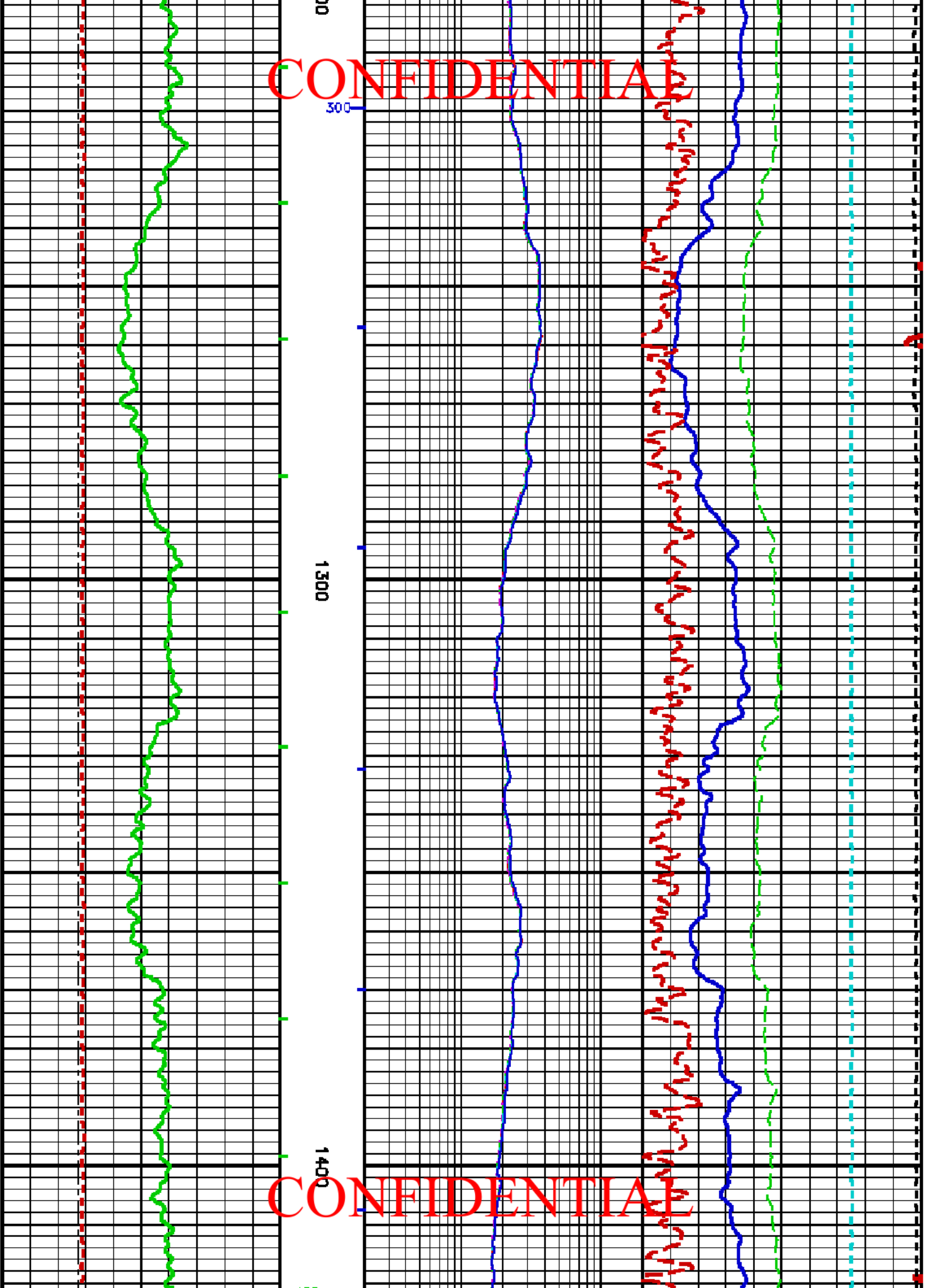
CONFIDENTIAL

CONFIDENTIAL



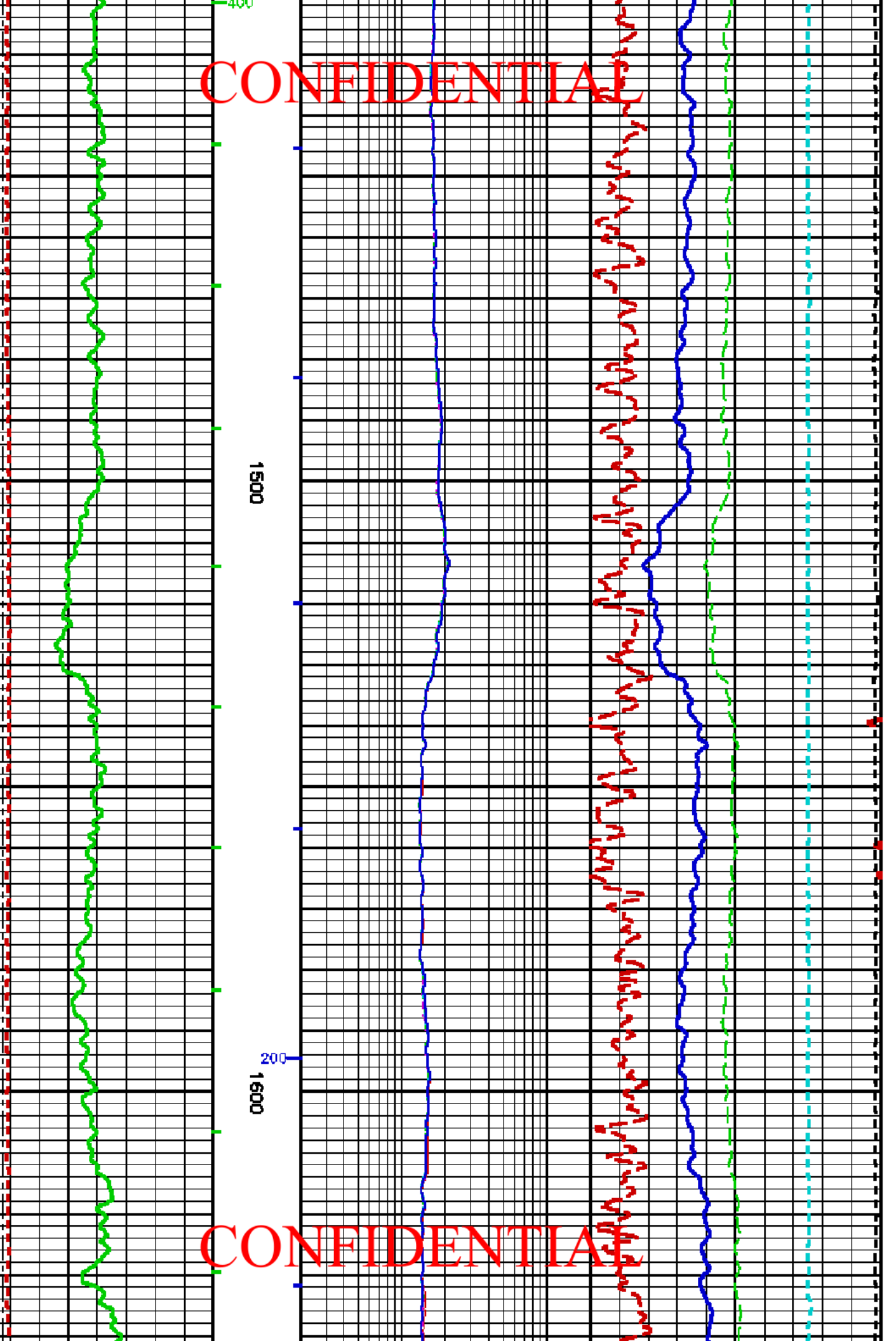
CONFIDENTIAL

CONFIDENTIAL

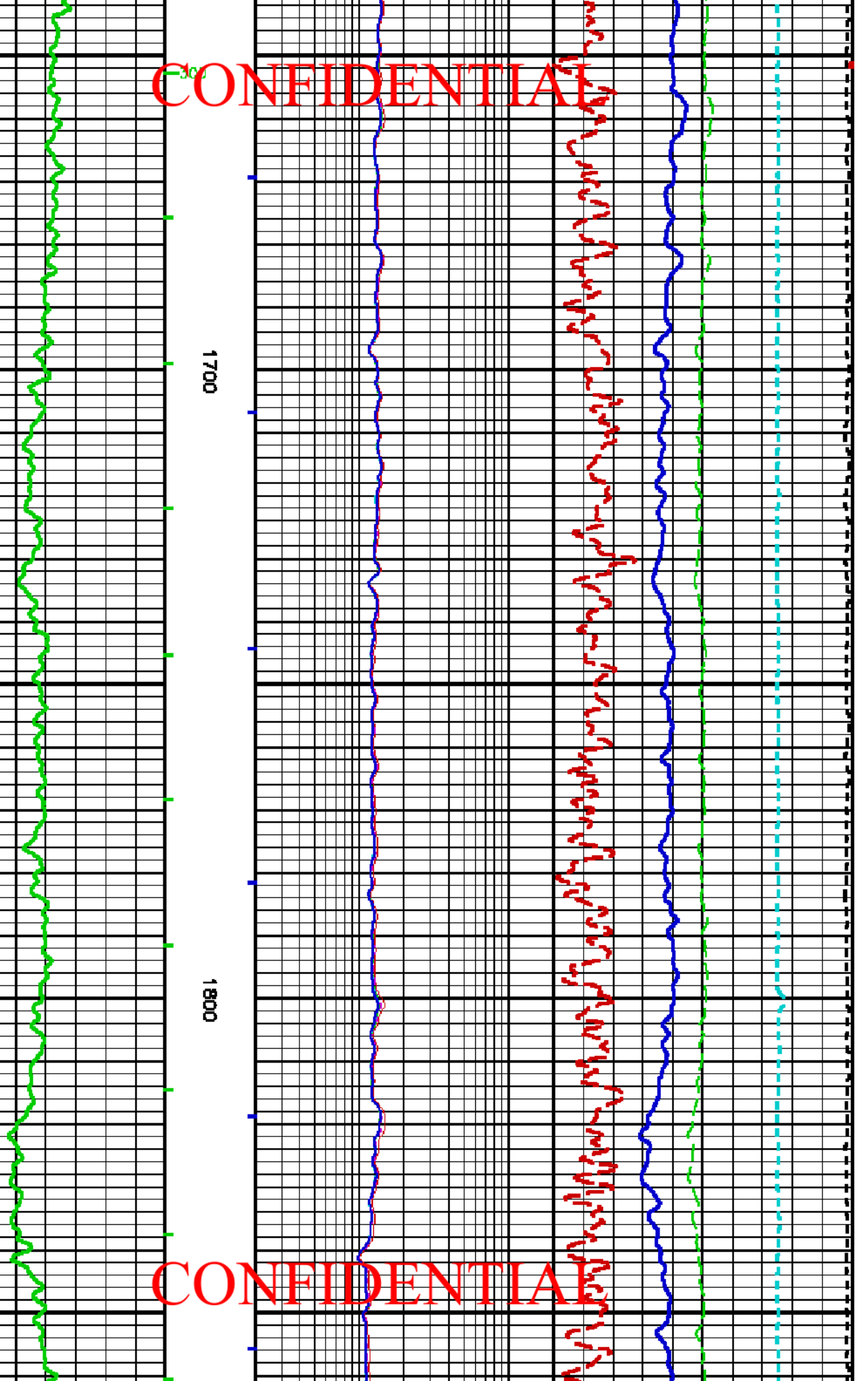


CONFIDENTIAL

CONFIDENTIAL



CONFIDENTIAL



1700

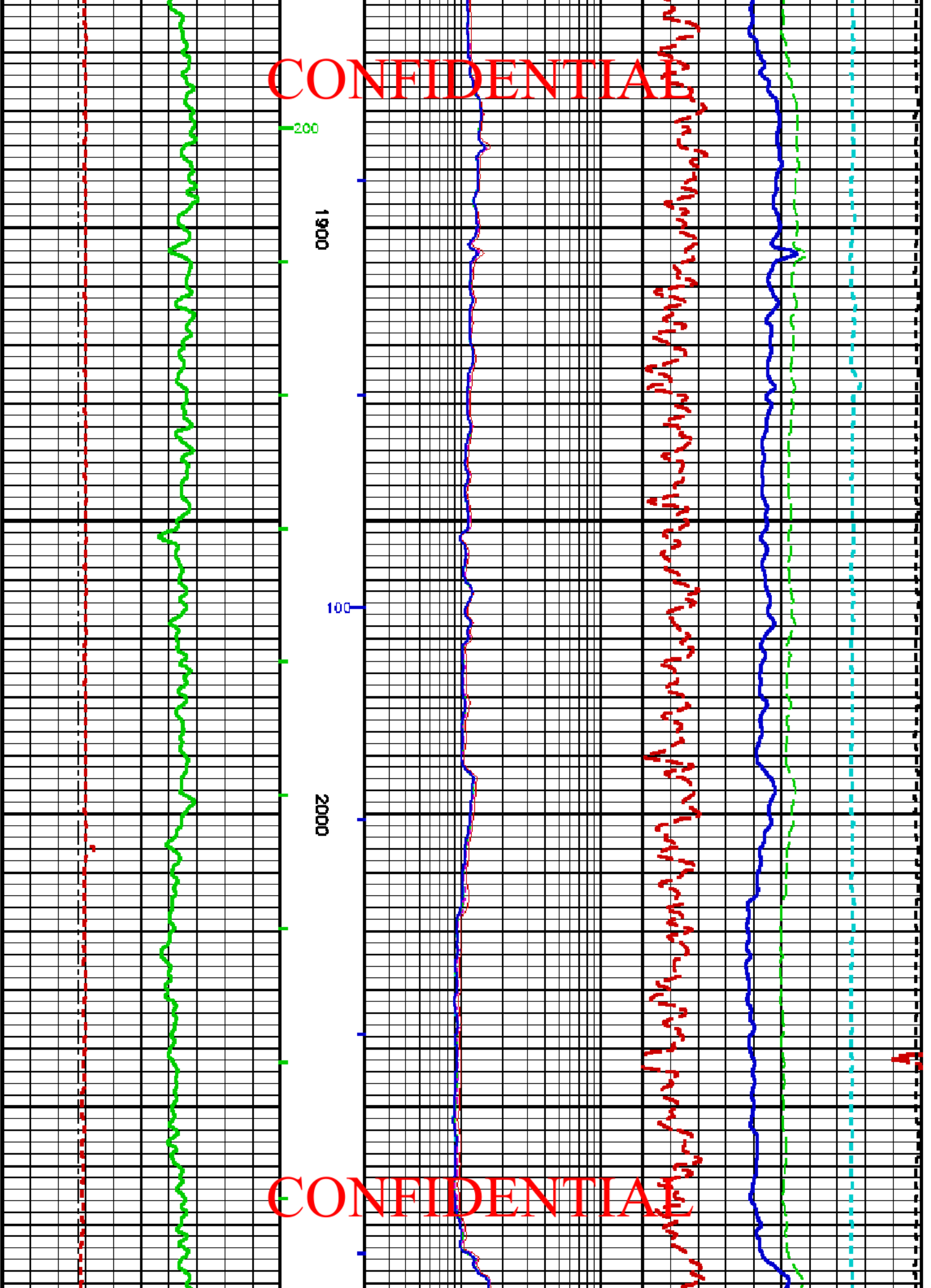
1800

CONFIDENTIAL



CONFIDENTIAL

CONFIDENTIAL



CONFIDENTIAL

2100

100

2200

FR GR

FR CAL

FR CNCF

FR PORZ

FR ZDEN

FR ZCOR

CONFIDENTIAL

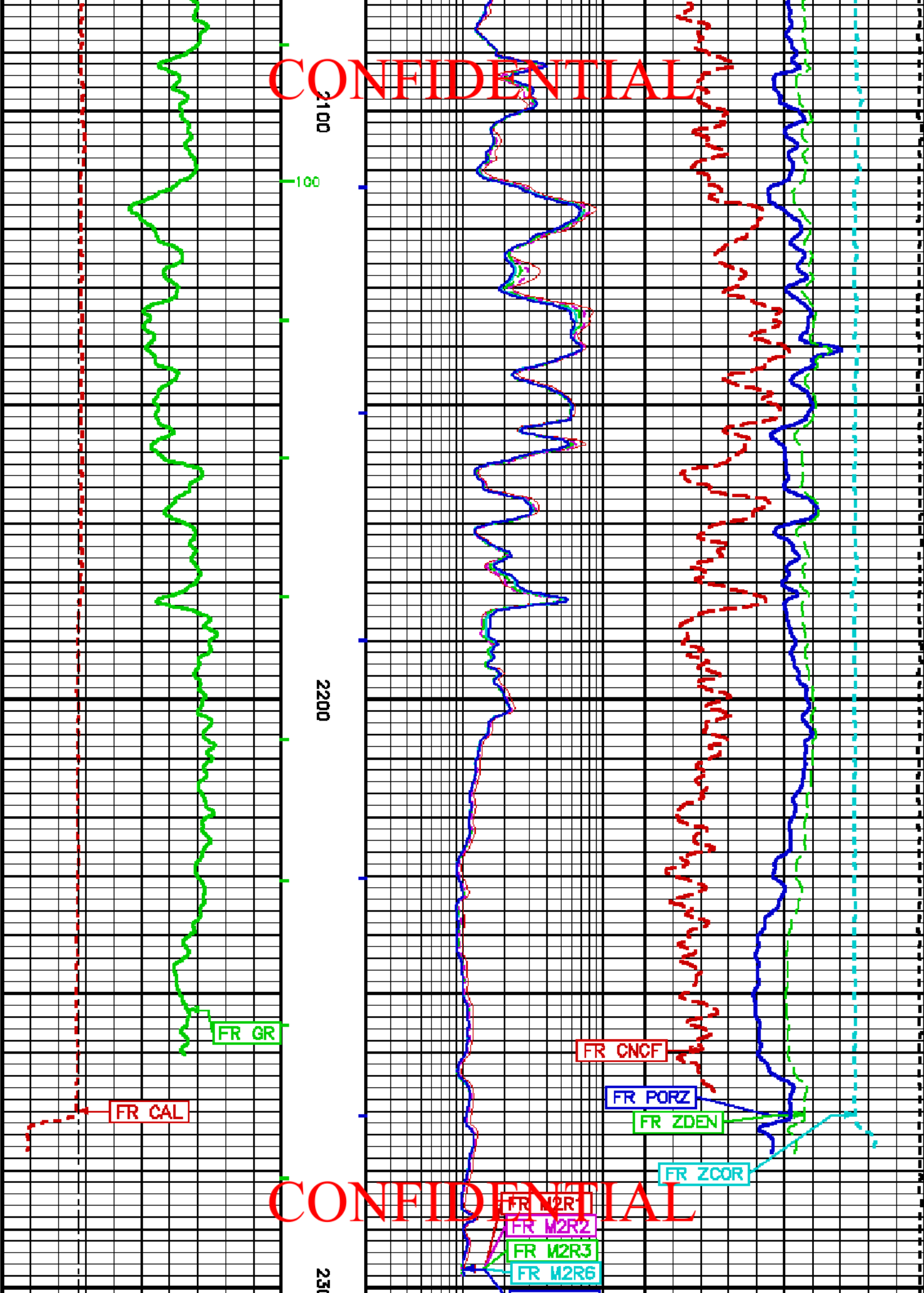
FR M2R1

FR M2R2

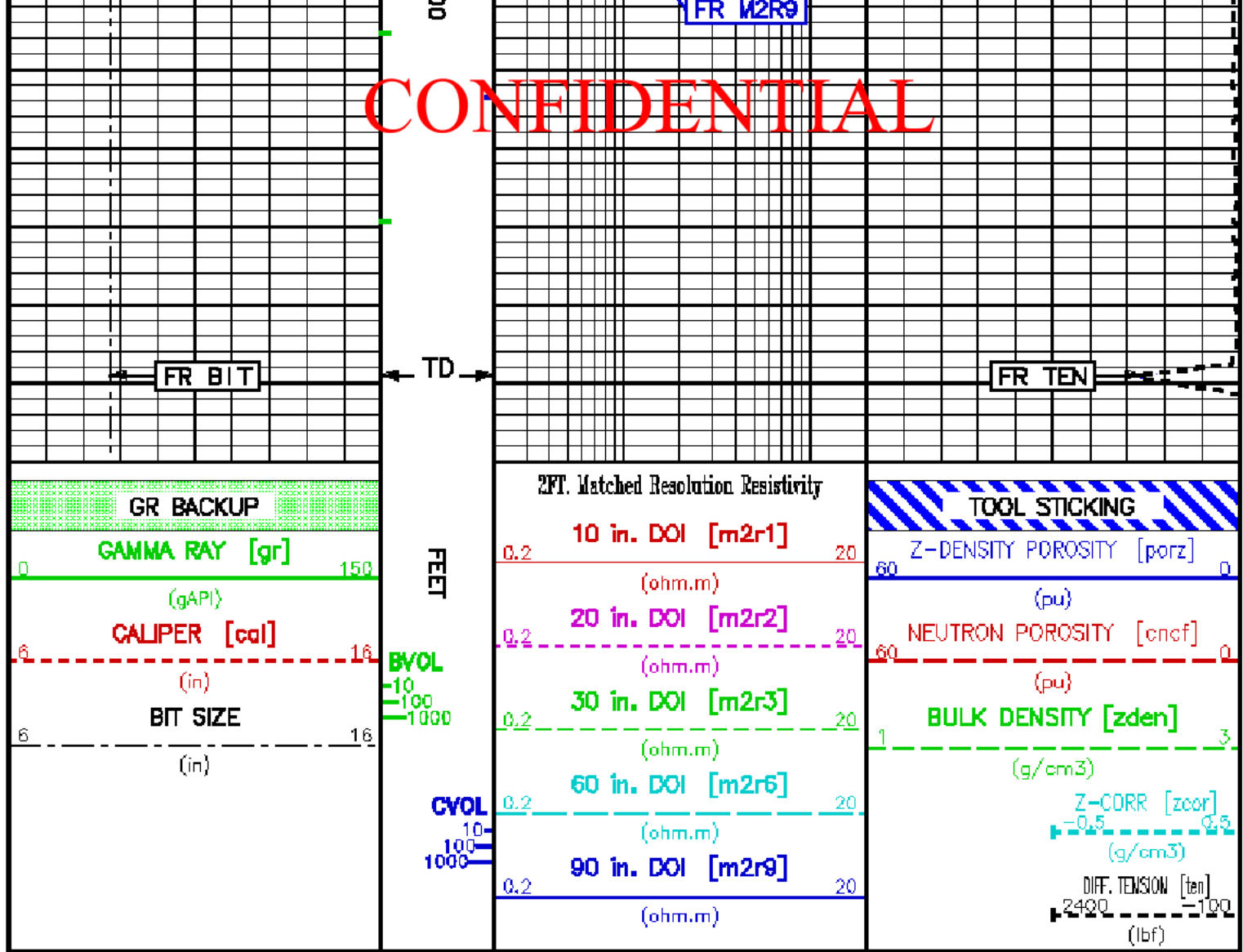
FR M2R3

FR M2R6

2300



CONFIDENTIAL



REPEAT LOG

ECLIPS 6.11 Aug 06, 2010

Wed Sep 15 01:12:45 2010

Perpht /main/62

Cplot

Pdf\_Cpp /main/16

Fileview 5.50

PARAMETER AND FILTER SUMMARY REPORT

File: /data/985628/m771105.prm  
 LOGGING MODE: DEPTH DIRECTION: UP  
 TOP DEPTH: 1985.000 ft BOTTOM DEPTH: 2335.500 ft

SYMMETRIC FILTER

MEASUREMENT TYPE	PARAMETER	VALUE	UNITS	INTERVAL (ft)
Y AXIS CALIPER	FILTER ( )	medium	(1)	TOP BOTTOM
TENSION	FILTER ( )	medium	(1)	" "
GR	FILTER ( )	medium	(1)	" "
CN	FILTER ( )	medium	(1)	" "
CALIPER	FILTER ( )	medium	(1)	" "
	FILTER (.h)	medium	(1)	" "

CONFIDENTIAL

ZDL MED RES

 FILTER (hrd1\*) medium  
 FILTER (hrd1a\*) medium  
 FILTER (hrd2\*) medium  
 FILTER (hrd2a\*) medium

 " "  
 " "  
 " "  
 " "

# CONFIDENTIAL

## BOREHOLE & CEMENT

MEASUREMENT TYPE	PARAMETER	VALUE	UNITS	INTERVAL (ft)	
CASING - BOREHOLE & CEMENT VOLUME	CASING O.D.	5.500	1m	TOP	BOTTOM
	CASING THICKNESS	0.000	1m	"	"
BIT SIZE	BIT SIZE	8.750	1m	"	"
BOREHOLE CORR DIAMETER SOURCE	CALIPER/FIXED DIA. (cnbh*)	USE CALIPER		"	"
	CALIPER/FIXED DIA. (mbh*)	USE CALIPER		"	"
BOREHOLE CORR DIAMETER	FIXED DIAMETER (cnbh*)	8.750	1m	"	"
	FIXED DIAMETER (mbh*)	8.750	1m	"	"
BH MUD RESISTIVITY SOURCE	RMD SOURCE (HDIL)	OIL BASE MUD		"	"

## CN PROCESSING

MEASUREMENT TYPE	PARAMETER	VALUE	UNITS	INTERVAL (ft)	
2448 CN MATRIX	2448 MATRIX	SANDSTONE		TOP	BOTTOM
CN SALINITY CORRECTION	SALINITY	0	ppm	"	"
CN CASING & CEMENT CORRECTION	CORRECTION	OFF		"	"
	BIT SIZE BEHIND CSNG	12.250	1m	"	"

## ZDL PROCESSING

MEASUREMENT TYPE	PARAMETER	VALUE	UNITS	INTERVAL (ft)	
DENSITY POROSITY	RHOmatrix	2.650	g/cm3	TOP	BOTTOM
	RHOfluid	0.800	g/cm3	"	"
ZDL	DENK TRACKING	ON		"	"

## HDIL PROCESSING

MEASUREMENT TYPE	PARAMETER	VALUE	UNITS	INTERVAL (ft)	
HDIL TEMPERATURE CORRECTION	TEMP CORR SOURCE	USE RXTMP		TOP	BOTTOM
ADAPTIVE BOREHOLE CORRECTION	ABC PROCESSING	ON		"	"
	ABC to CALCULATE	STANDOFF		"	"
	STANDOFF	0.70	1m	"	"
	TOOL POSITION	ECCENTERED		"	"
	Rmad MULTIPLIER	1.000		"	"

## CURVE DESCRIPTION REPORT

CURVE NAME	CREATION DATE	CURVE DESCRIPTION
F1:BIT	Sep 15 00:28:33 2010	BIT SIZE
F1:BVOL	Sep 15 00:28:33 2010	BOREHOLE VOLUME
F1:CAL	Sep 15 00:28:33 2010	CALIPER
F1:CMCF	Sep 15 00:28:33 2010	FIELD NORMALIZED COMPENSATED NEUTRON POROSITY
F1:CVOL	Sep 15 00:28:33 2010	CEMENT VOLUME
F1:GR	Sep 15 00:28:33 2010	GAMMA RAY
F1:M2R1	Sep 15 00:28:33 2010	VERTICAL 2-FOOT RESOLUTION MATCHED RESISTIVITY, 10-INCH DOI
F1:M2R2	Sep 15 00:28:33 2010	VERTICAL 2-FOOT RESOLUTION MATCHED RESISTIVITY, 20-INCH DOI
F1:M2R3	Sep 15 00:28:33 2010	VERTICAL 2-FOOT RESOLUTION MATCHED RESISTIVITY, 30-INCH DOI
F1:M2R6	Sep 15 00:28:33 2010	VERTICAL 2-FOOT RESOLUTION MATCHED RESISTIVITY, 60-INCH DOI
F1:M2R9	Sep 15 00:28:33 2010	VERTICAL 2-FOOT RESOLUTION MATCHED RESISTIVITY, 90-INCH DOI
F1:PORZ	Sep 15 00:28:33 2010	POROSITY FOR SELECTABLE MATRIX
F1:TEM	Sep 15 00:28:33 2010	DIFFERENTIAL TENSION
F1:ZCOR	Sep 15 00:28:33 2010	DENSITY CORRECTION
F1:ZDEN	Sep 15 00:28:33 2010	FORMATION BULK DENSITY

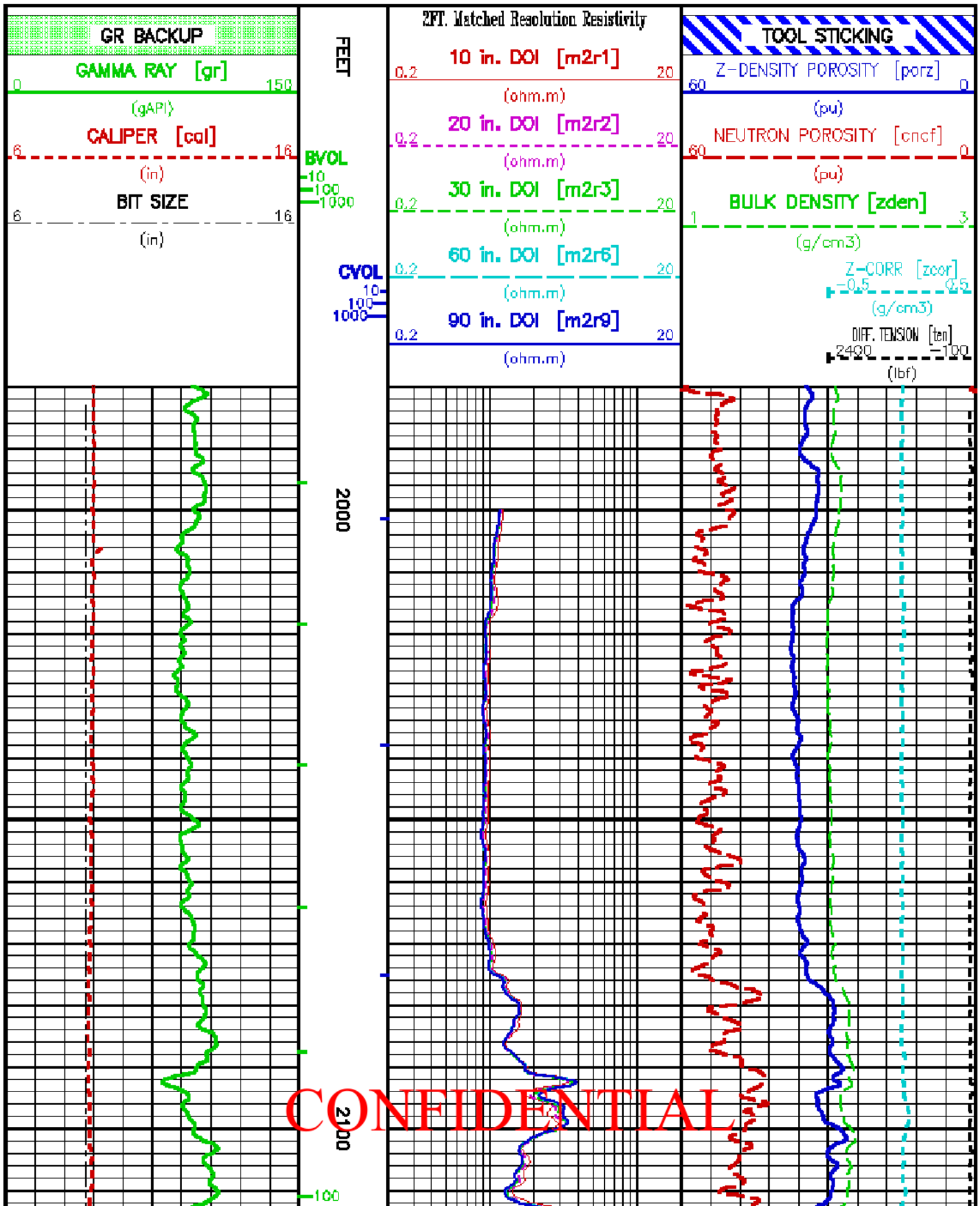
## CURVE MEASURE POINT OFFSET

CURVE	OFFSET (ft)	CURVE	OFFSET (ft)	CURVE	OFFSET (ft)	CURVE	OFFSET (ft)
BIT	0.00	M2R1	52.25	M2R9	78.50	ZDEN	78.50
CAL	79.00	2R2	52.25	PRZ	78.50		
CMCF	89.50	2R3	52.25	TEM	0.00		
GR	96.58	M2R6	52.25	ZCOR	78.50		

# CONFIDENTIAL

Data File 1 : F1 : nka4232:/data/345628/m77105.cdf  
 Created On : Sep 15 00:28:53 2010  
 Company : BRIDGE ENERGY  
 Well : KORN 1-22  
 Field : WILDCAT  
 File Interval : 1073.25 - 2355.5 Feet  
 Out : m7711

# CONFIDENTIAL



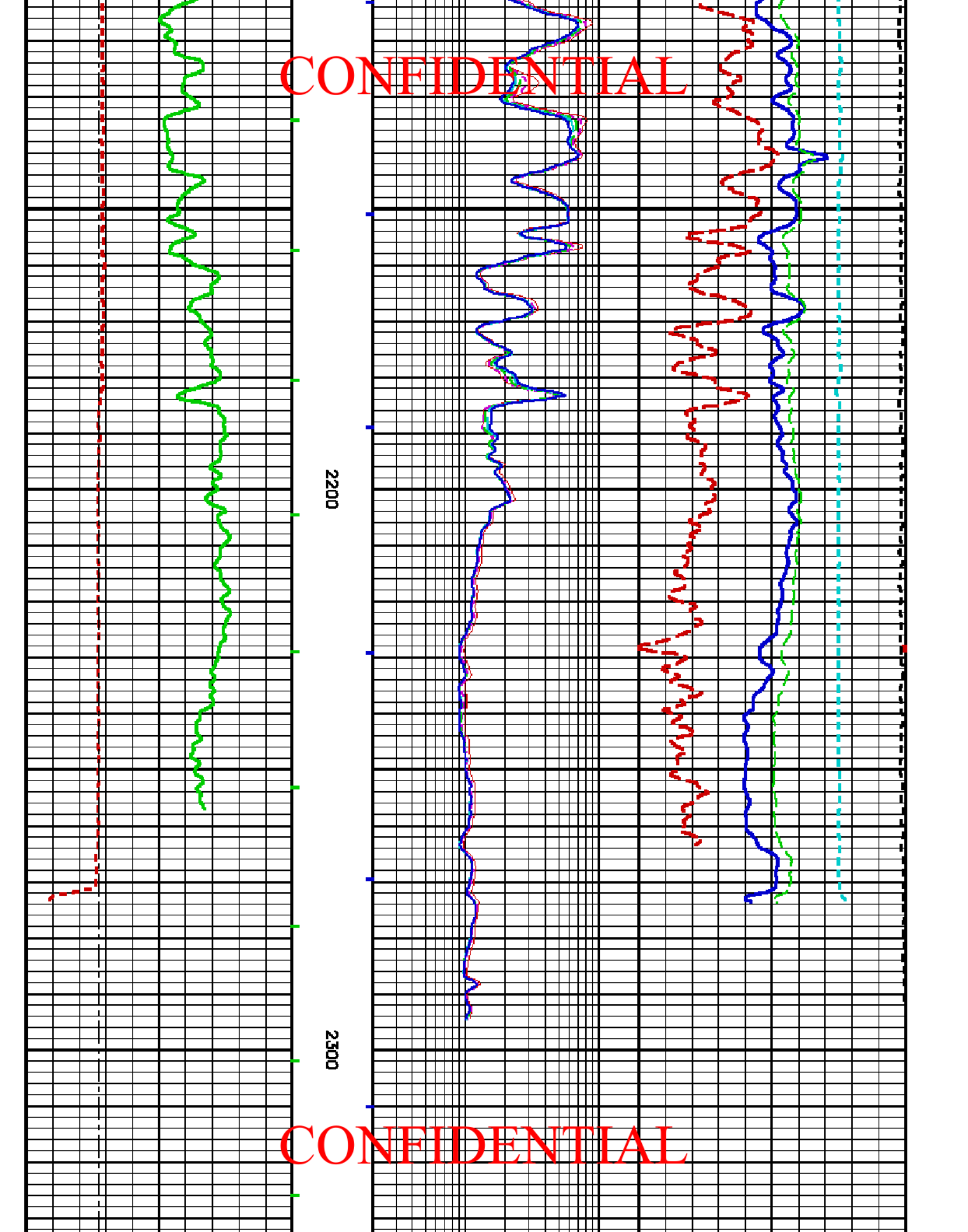
CONFIDENTIAL

CONFIDENTIAL

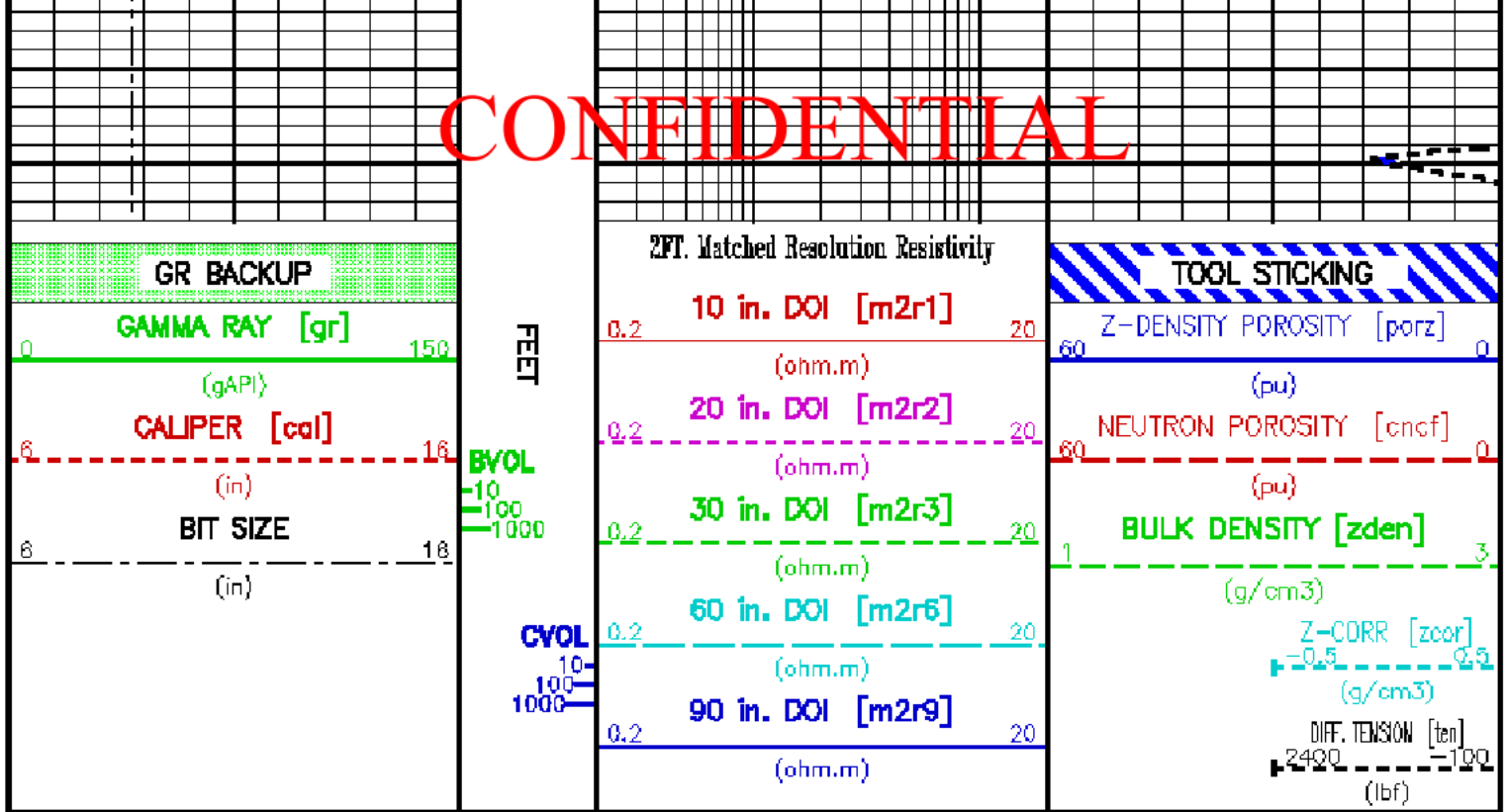
2200

2300

CONFIDENTIAL



CONFIDENTIAL



CONFIDENTIAL