

**CEMENT BOND / GAMMA RAY
COLLAR LOG**

COMPANY BRIDGE ENERGY WELL KORN 1-22 FIELD WILDCAT CNTY PAYETTE STATE ID		COMPANY BRIDGE ENERGY WELL KORN 1-22 FIELD WILDCAT COUNTY PAYETTE STATE IDAHO	LOCATION: NE/NW 607' FNL & 508' FWL SEC. 22 TWP. 7N RGE. 4W	OTHER SERVICES: PERFORATE
PERM. DATUM GROUND LEVEL LOG MEASURED FROM K.B. 17 FT. ABOVE PERMANENT DATUM DRILLING MEASURED FROM K.B.		ELEV. 2376.00 ELEV.: K.B. 2376.00 D.F. NA G.L. 2359.00		
DATE	17-SEP-2010			
DEPTH DRILLER	ONE			
DEPTH LOGGER	2343.0			
BITM. LOG INTERVAL	2249.0			
TOP LOG INTERVAL	2243.0			
OPEN HOLE SIZE	0.0			
TYPE FLUID	8.75			
DENS.	H2O			
MAX. REC. TEMP.	8.3			
EST. CEMENT TOP	128			
TIME WELL READY	SEELOG			
TIME LOGGER ON BITM.	2:45			
EQUIP. NO.	SEELOG			
LOCATION	14115			
RECORDED BY	CASPER			
WITNESSED BY	KERR			
	BOB HATFIELD			
BOREHOLE RECORD		TUBING RECORD		
RUN NO.	BIT FROM TO	SIZE	WGT.	FROM TO
1	12.25 SURF 774'			
2	8.75" 774'			
CASTING RECORD		TOP		
SURFACE STRING	SIZE 9.625"	WT/FT	GRADE	TYPE JOINT
PROT. STRING	NA	NA	NA	0
PROD. STRING	5.5"	17#	J-55	LTC
LINER				0
MARKER JOINT				TD
				TD
				774'

All interpretations of log data are opinions based on inferences from electrical or other measurements. We do not guarantee the accuracy or correctness of any interpretation or recommendation and we shall not be liable or responsible for any loss, cost, damages or expenses incurred or sustained by anyone resulting from any interpretation or recommendation made by any of our employees or agents.

REMARKS Rig: RAZORBACK Service Order # 172076
 WELL LOGGED PER CUSTOMER REQUEST USING WIRELINE MEASUREMENTS. BHT 128 °F
 CORRELATED TO BAKER ATLAS COMPENSATED NEUTRON/GAMMA RAY/CALIPER LOG; 14SEPT2010
 PERFORATED WITH 19 GRAM, 4SPF, 120 DEG PHASE, TITAN "GUNSLINGER" CHARGE
 Prints: 5
 THANK YOU FOR CHOOSING WEATHERFORD, CASPER, WYOMING (307)472.9078

		EQUIPMENT DATA			
Bit Size	8.750	Run No.	Tool Type	Tool No.	Other
Well Status		1	GRBA	212	
Surface Pressure		2	SBTA	306	
Shut In	Flowing				

DEPTH SCALE: 5":100'

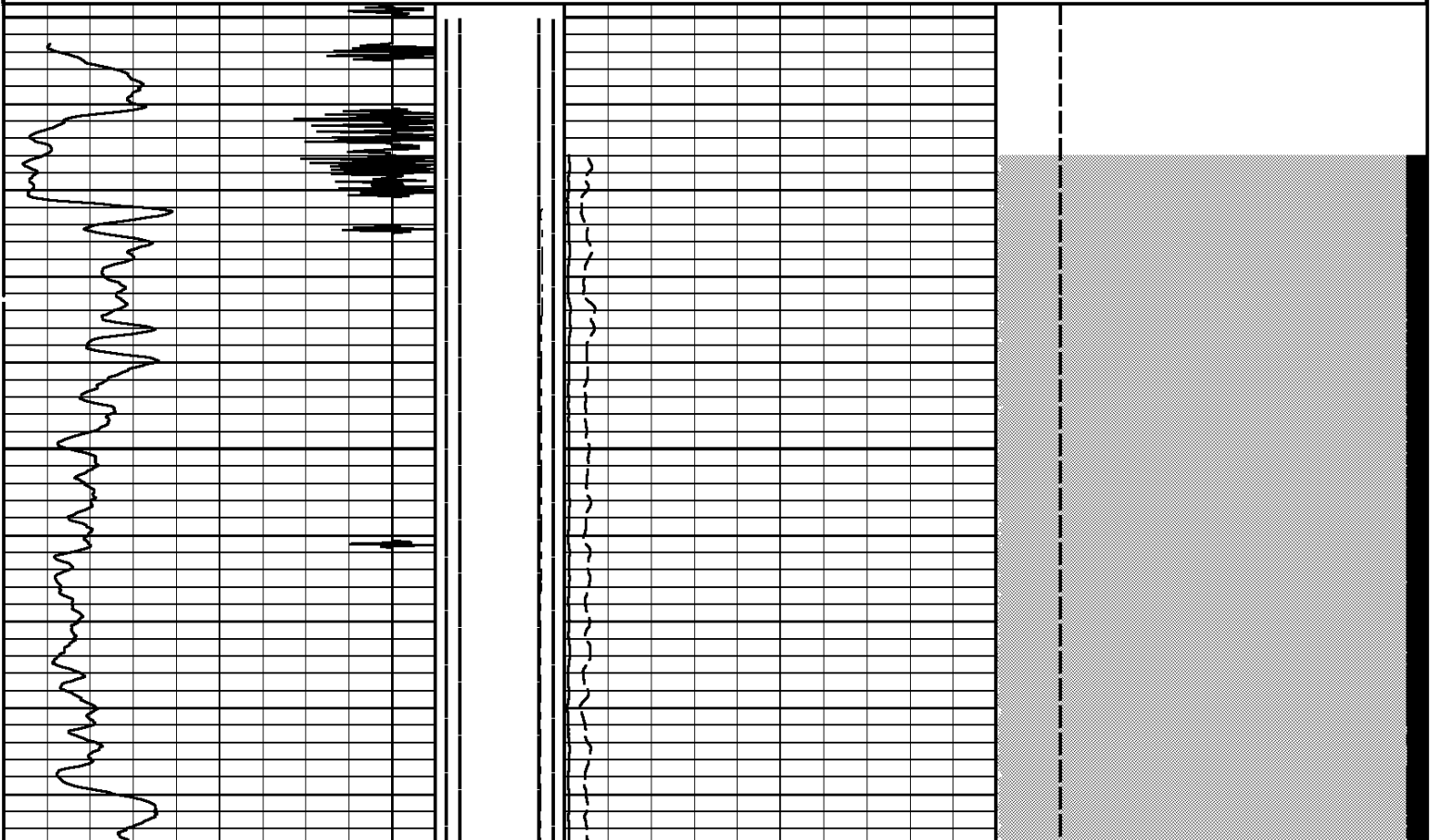
VERSION: 80214133R"

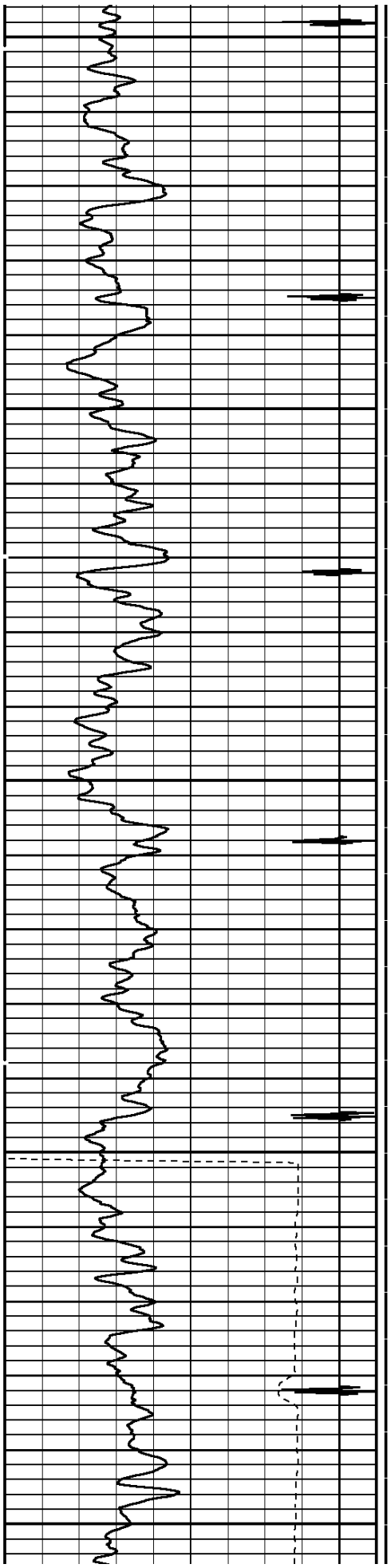
MAIN PASS

172076 M1

FINISH DEPTH: 22.1 Feet DIRECTION: UP DATE: 09/17/2010 TIME: 20:40 MODE: RECOMPUTE
 RECOMPUTED DATE: 09/17/2010 TIME: 21:00

COLLAR LOCATOR											
-5400	Millivolts	600									
GAMMA RAY						AMPLIFIED 3FT AMP			FREE PIPE TT		
0	API	120				0	Millivolts	20	200.00	Microseconds	1200.00
TRAVEL TIME 3FT			Tension			AMPLITUDE 3FT			VARIABLE DENSITY 5FT		
330	Microseconds	230	1000	0	0	0	Millivolts	100	200	Microseconds	1200

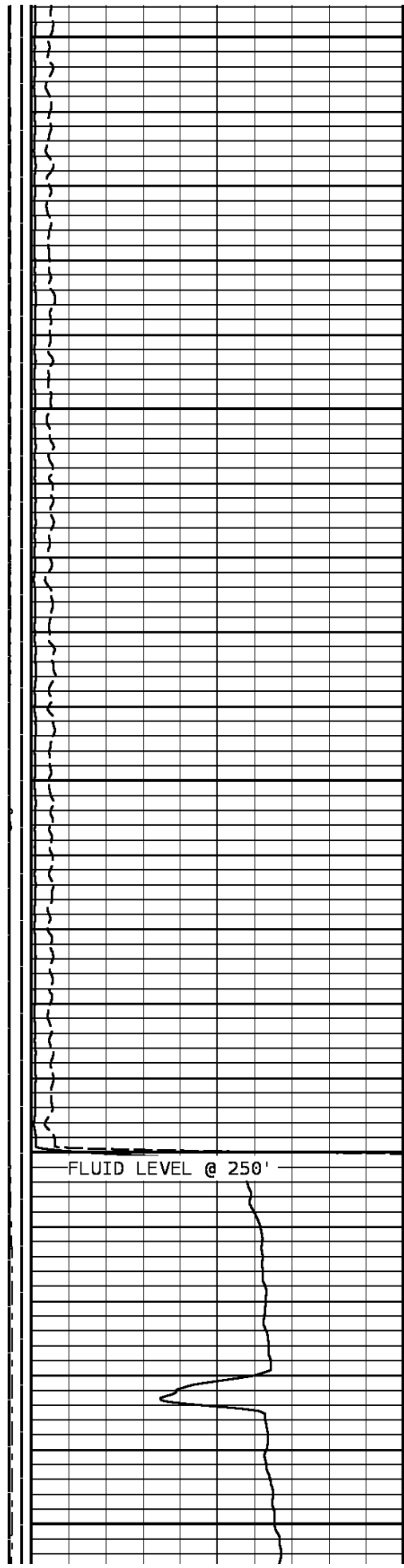




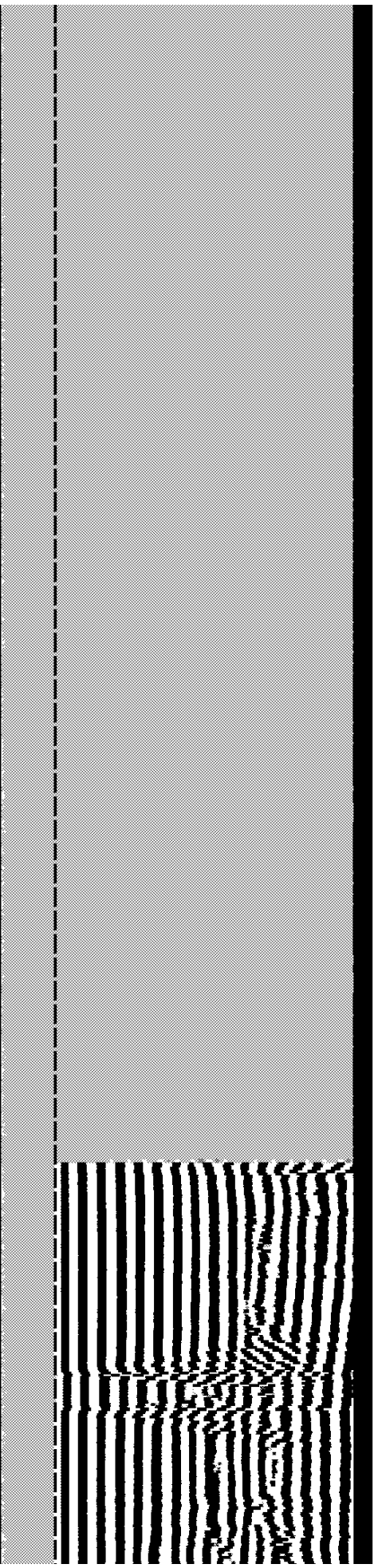
100

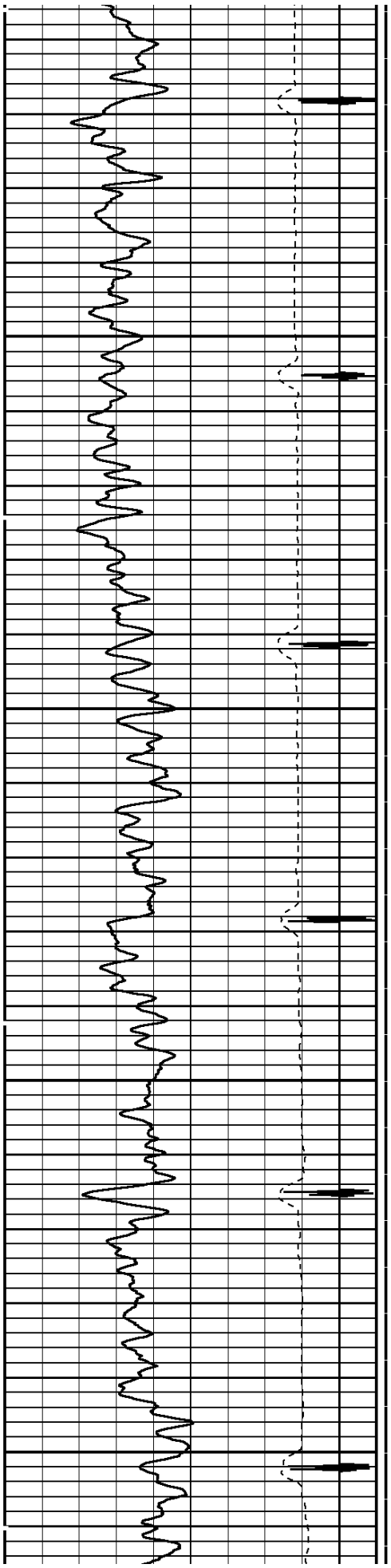
200

300



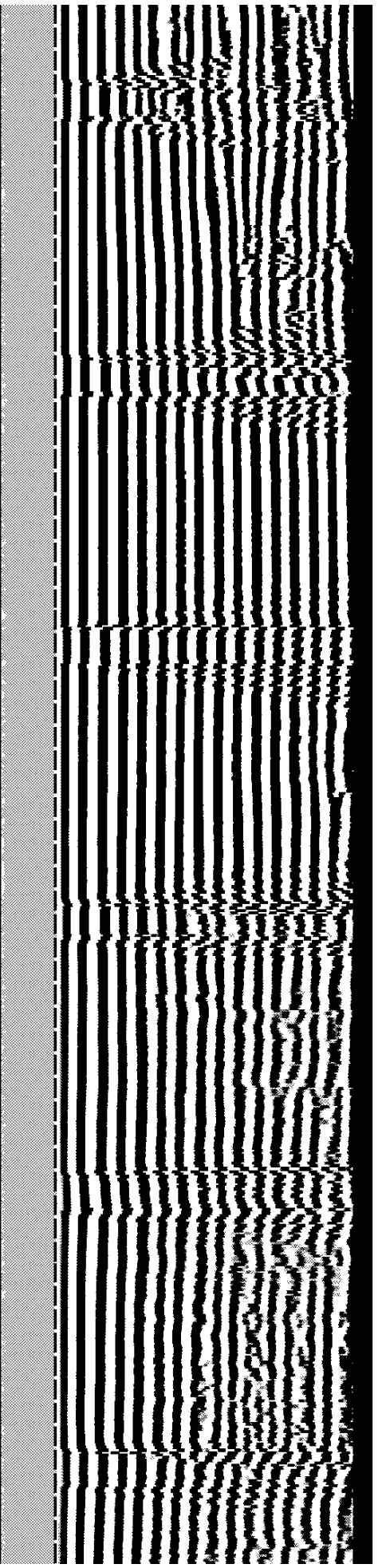
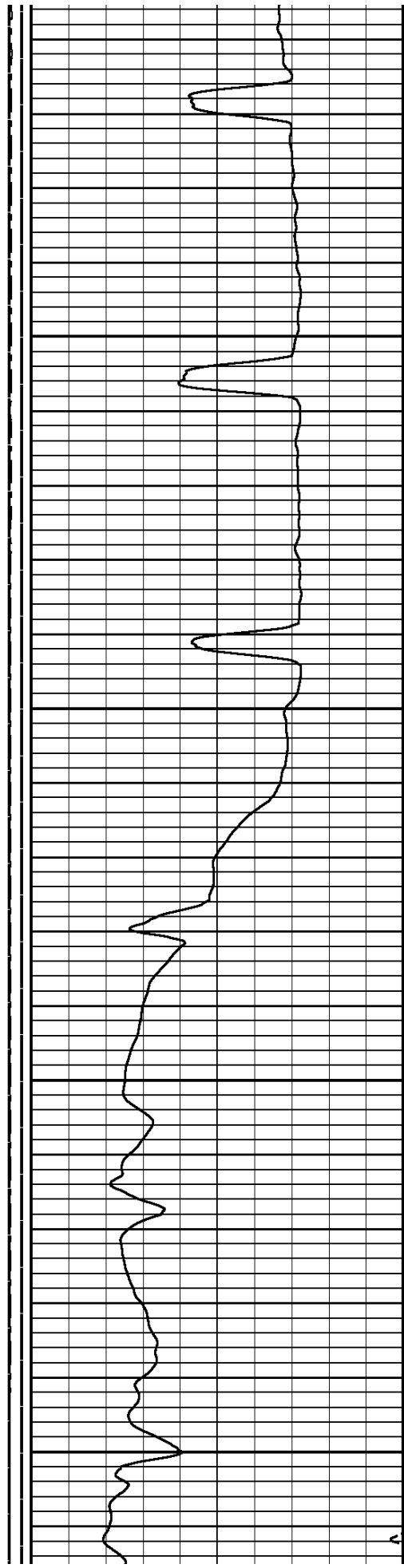
FLUID LEVEL @ 250'

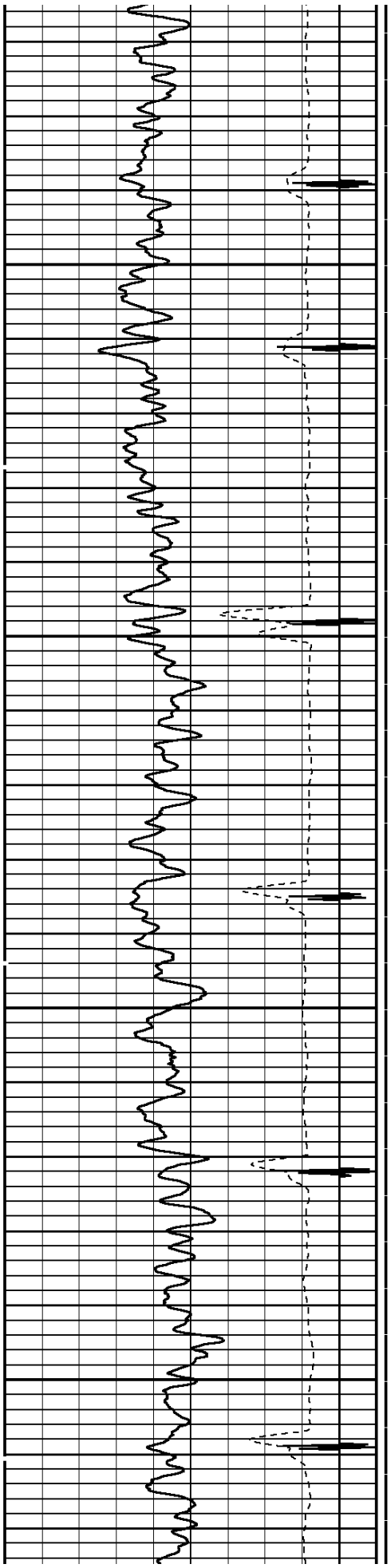




400

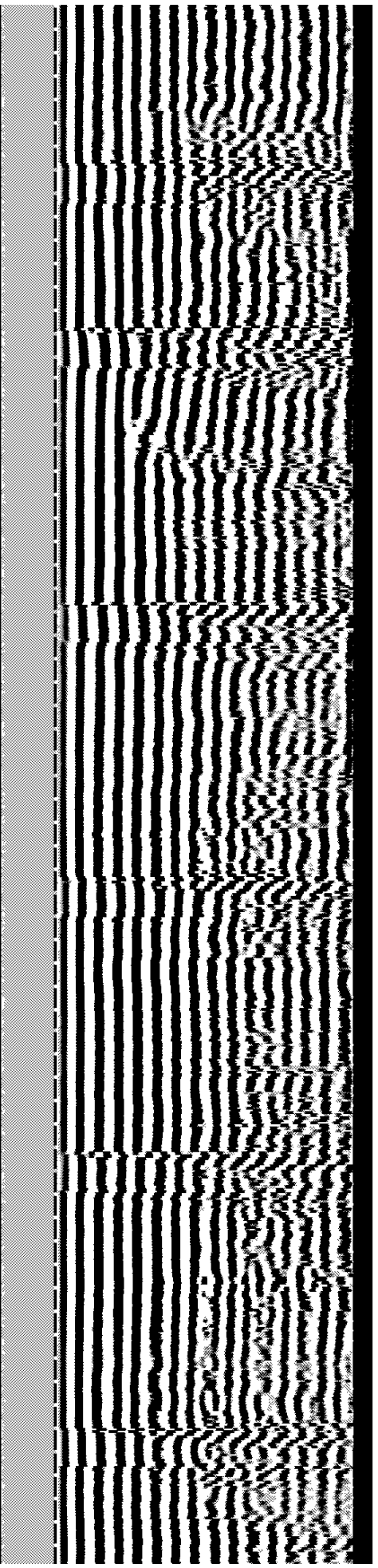
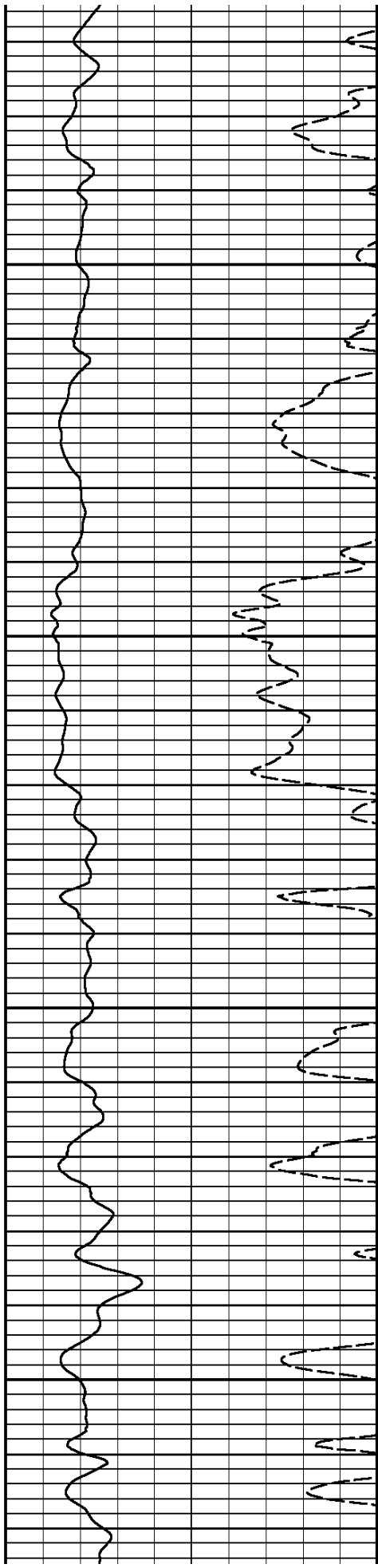
500

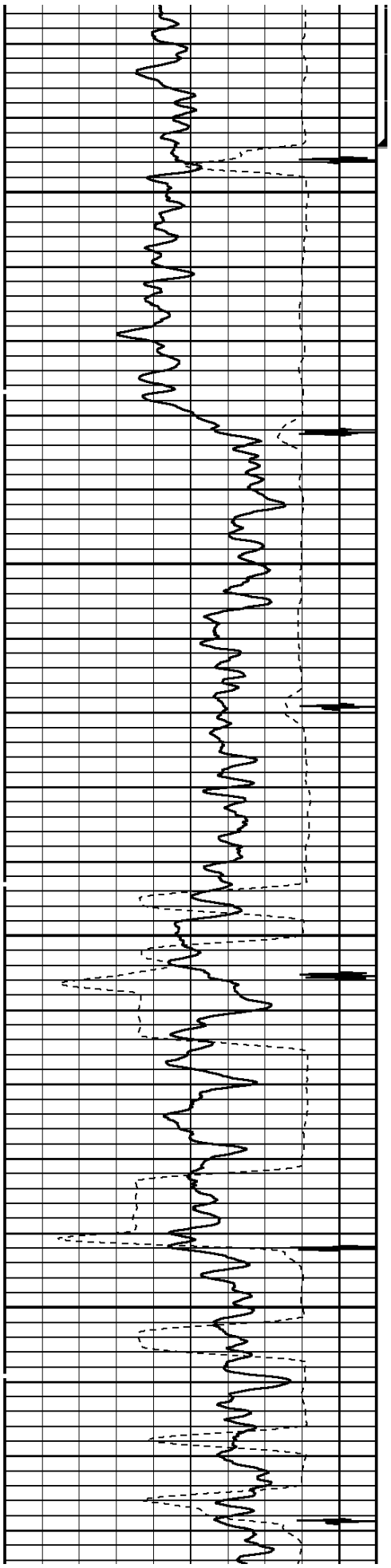




600

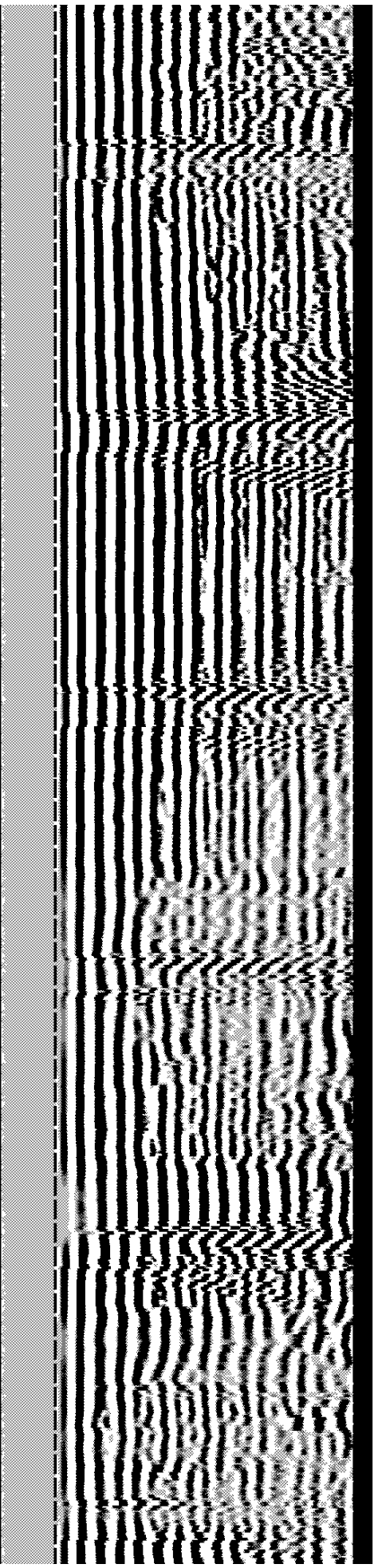
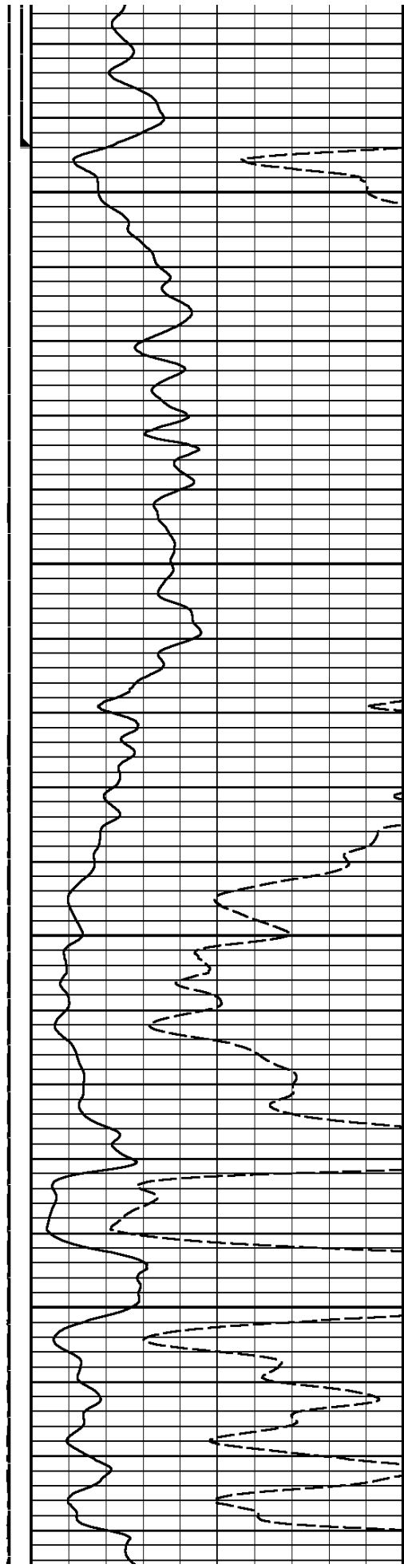
700

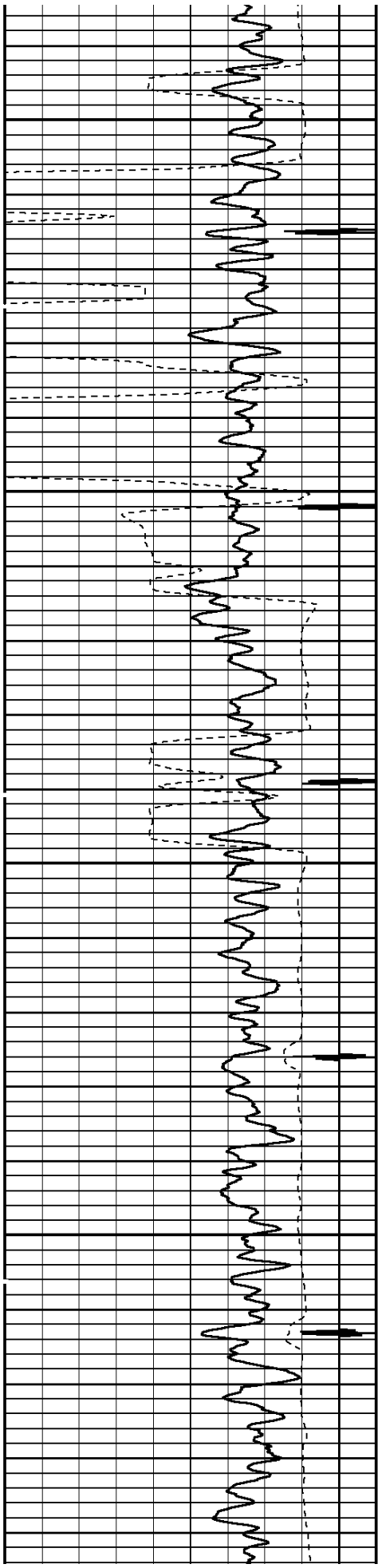




800

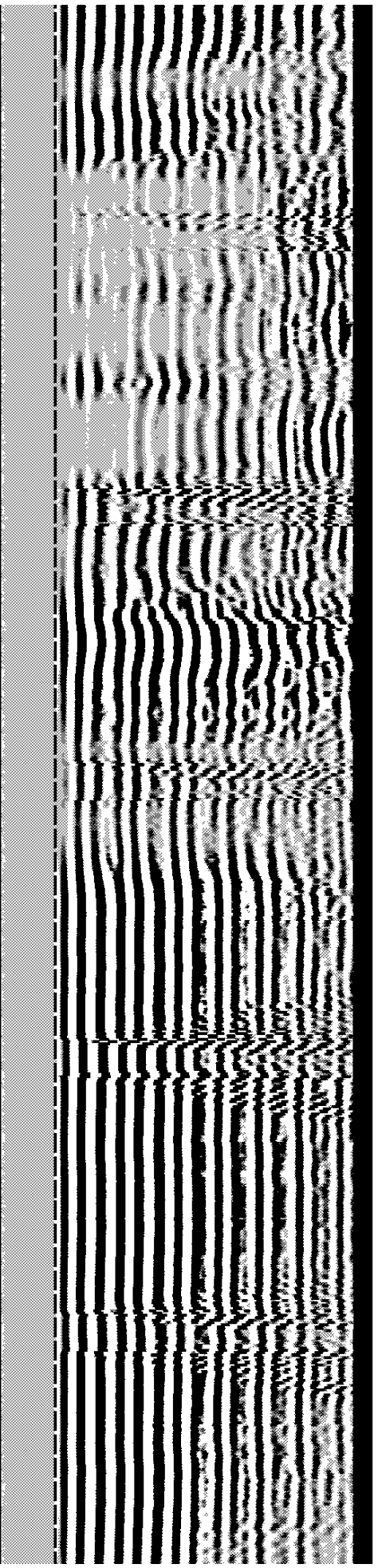
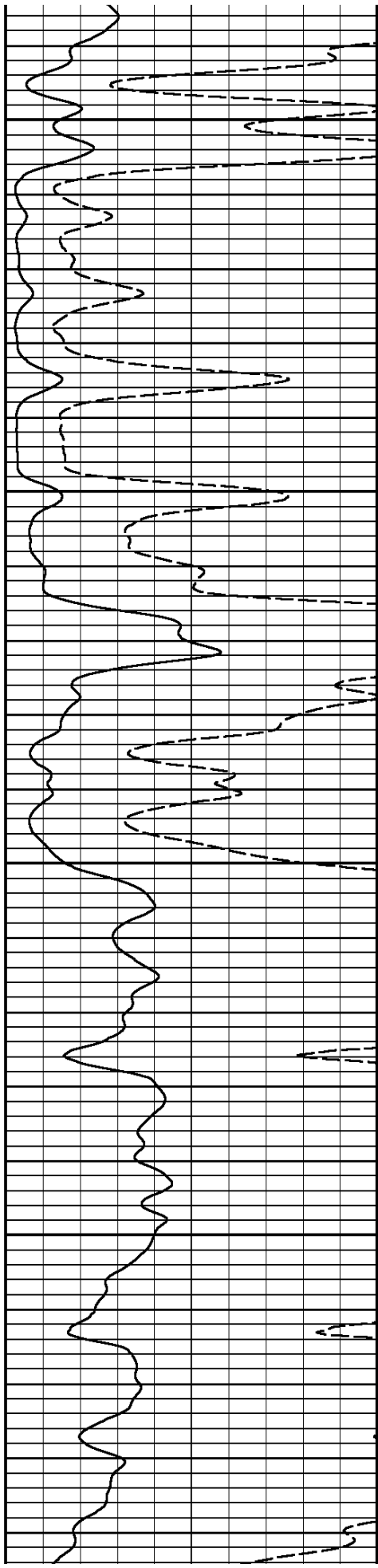
900

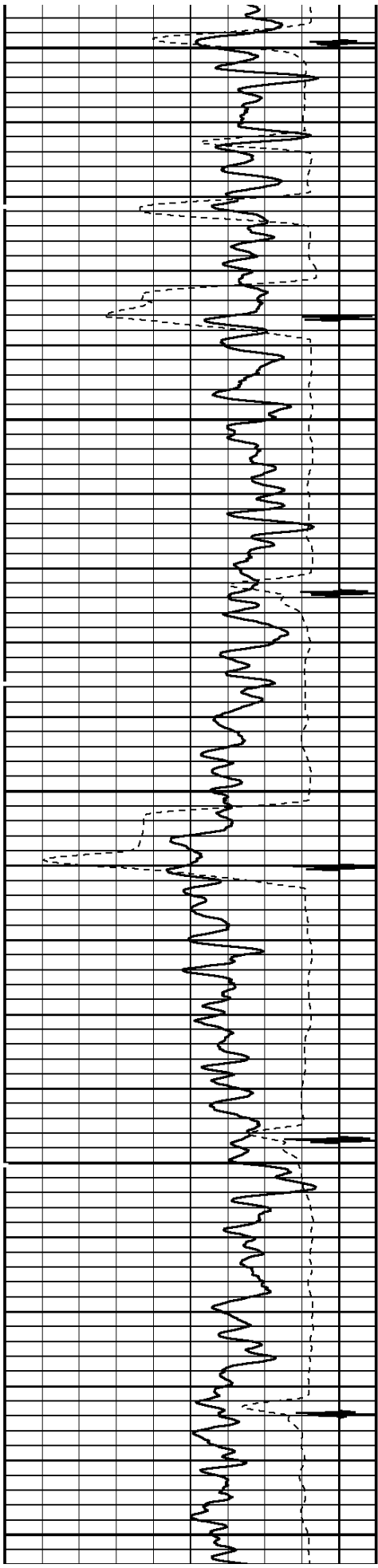




1000

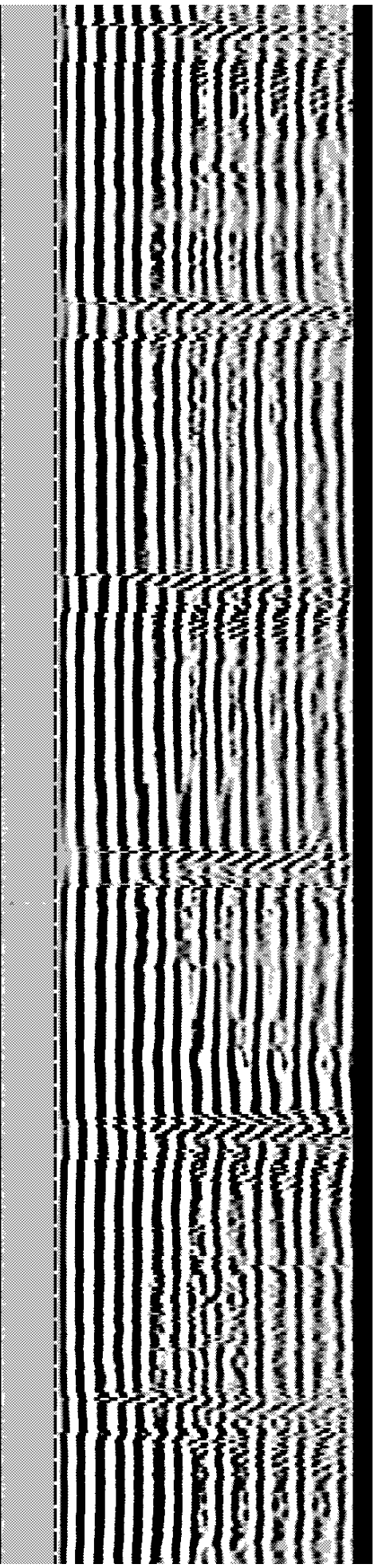
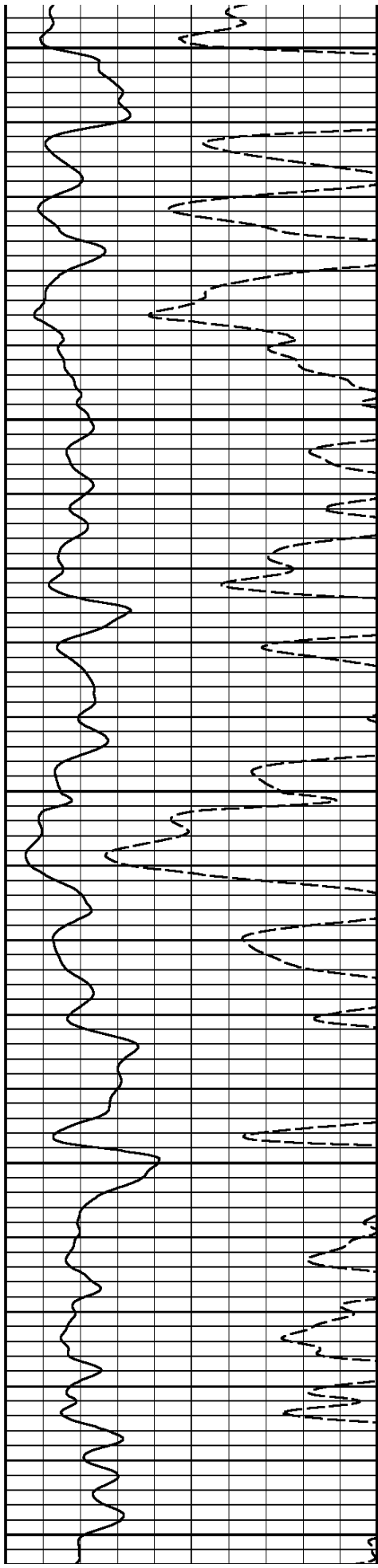
1100

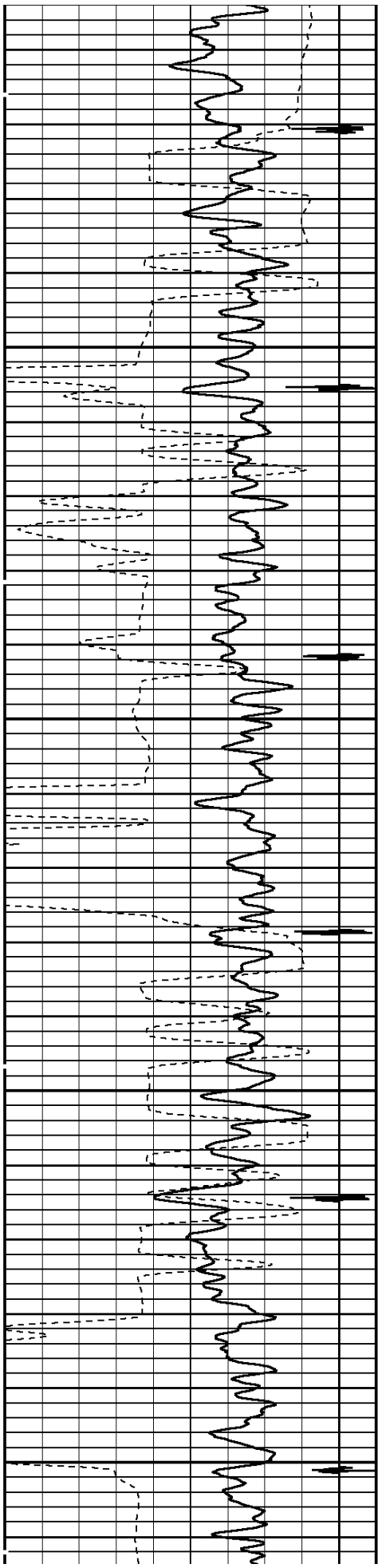




1200

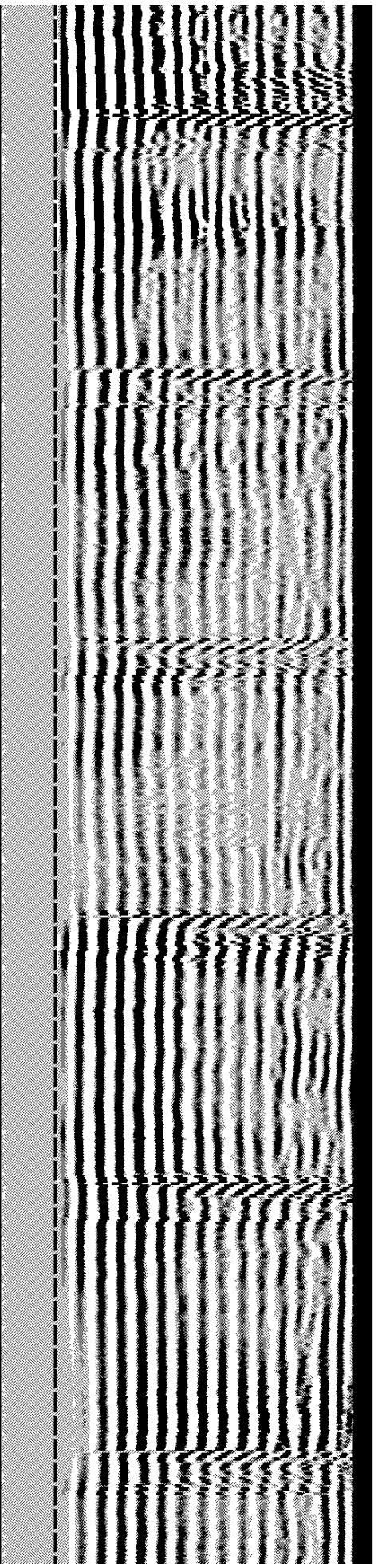
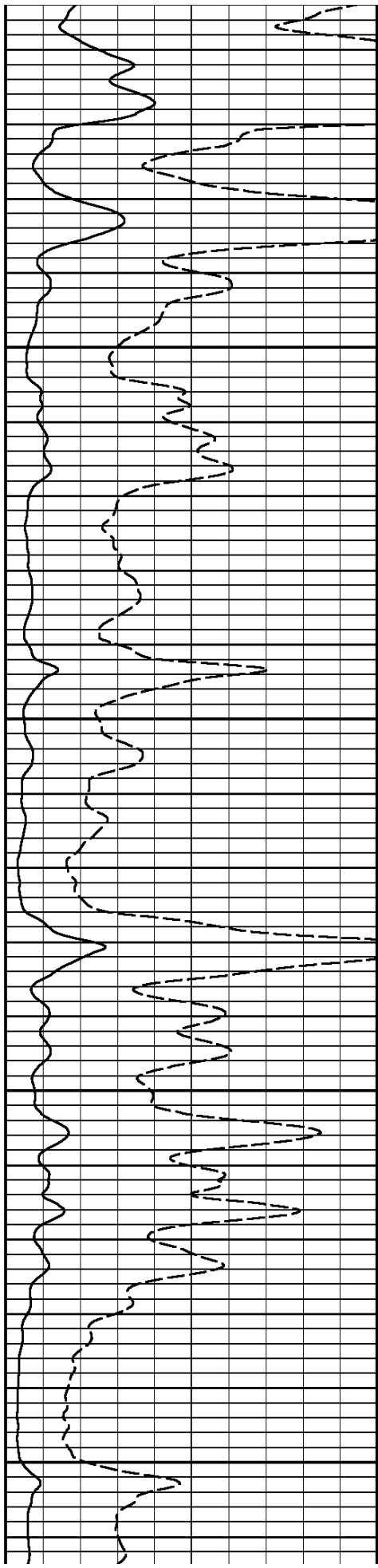
1300

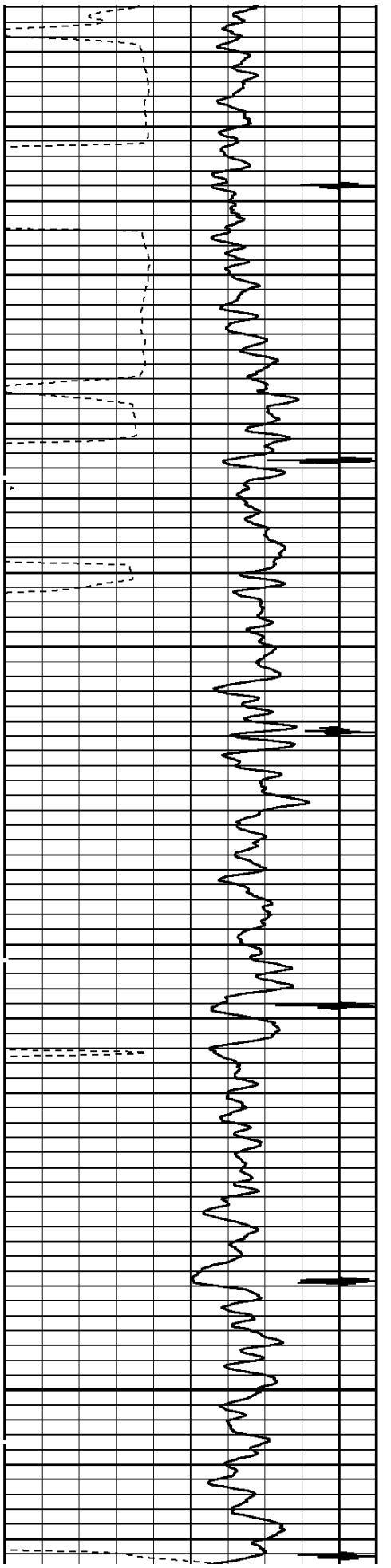




1400

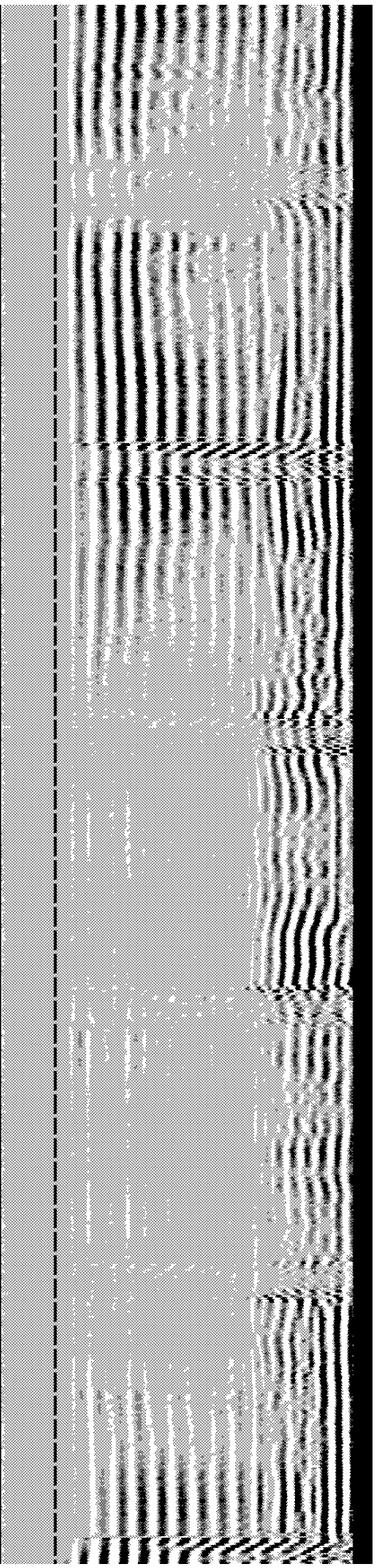
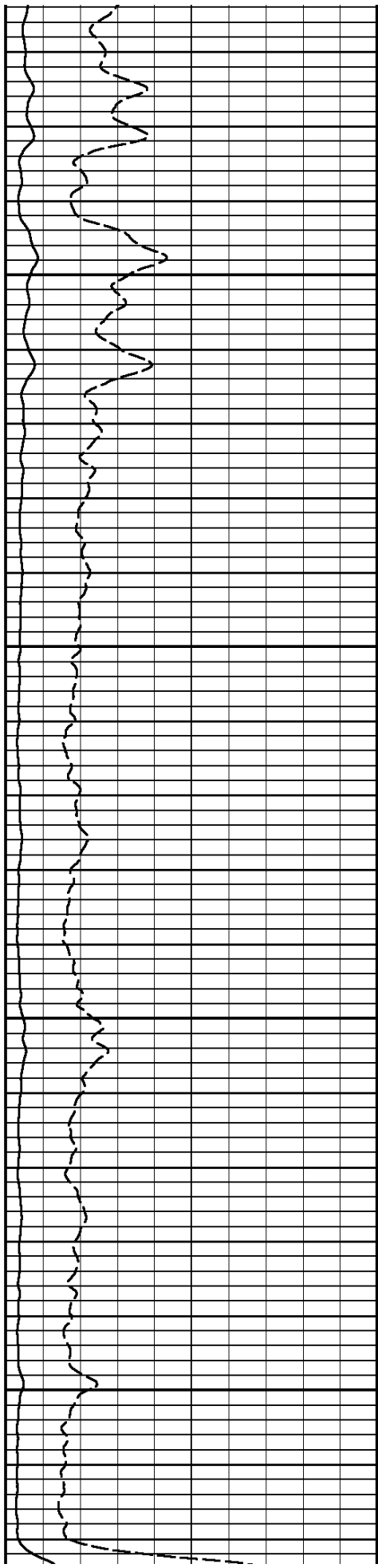
1500

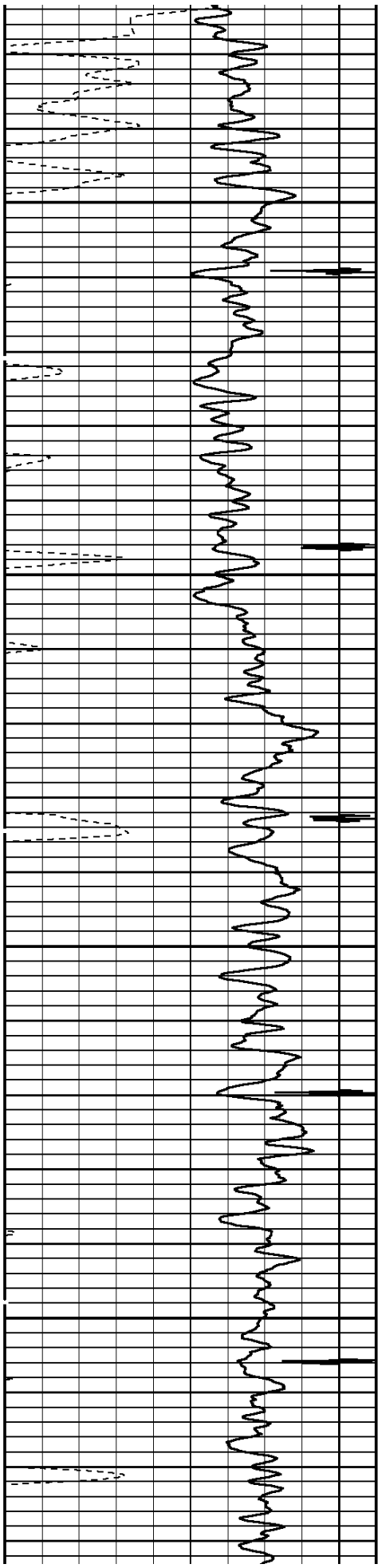




1600

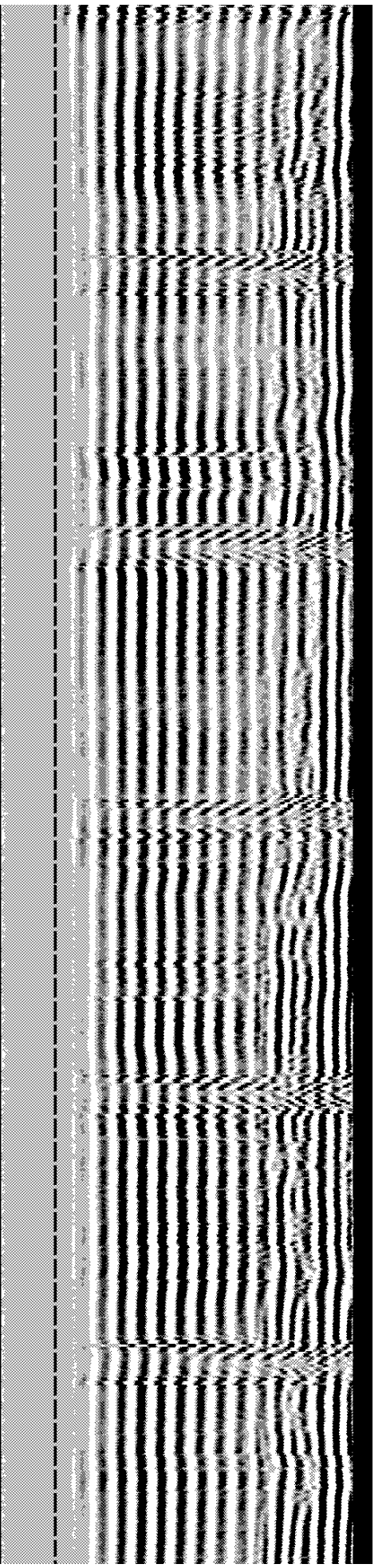
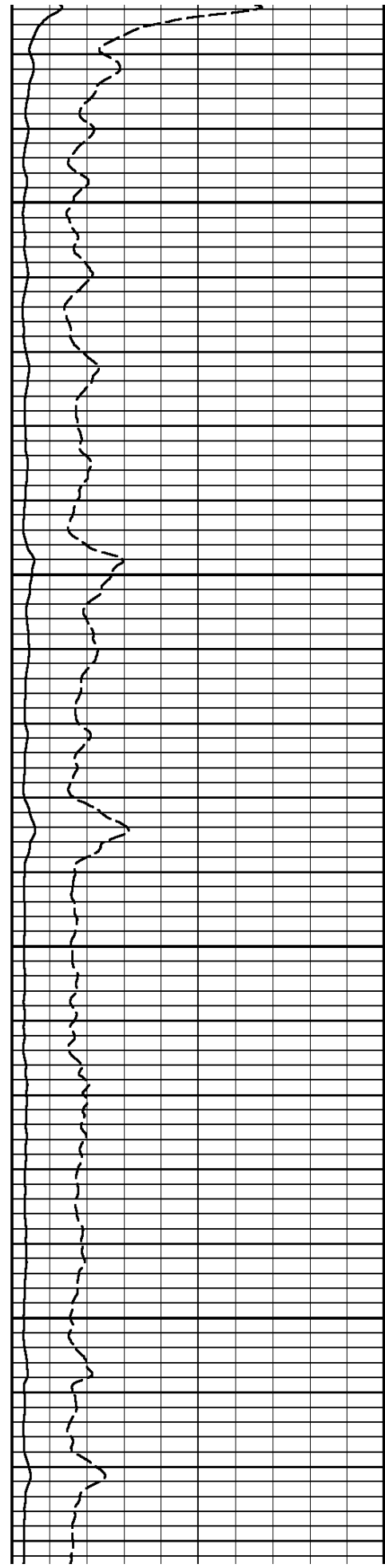
1700

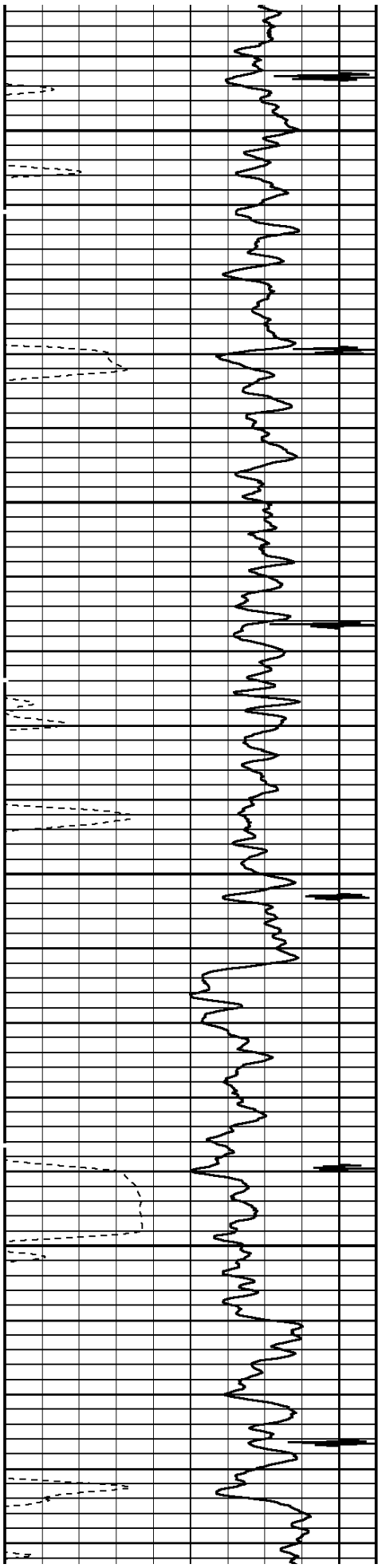




1800

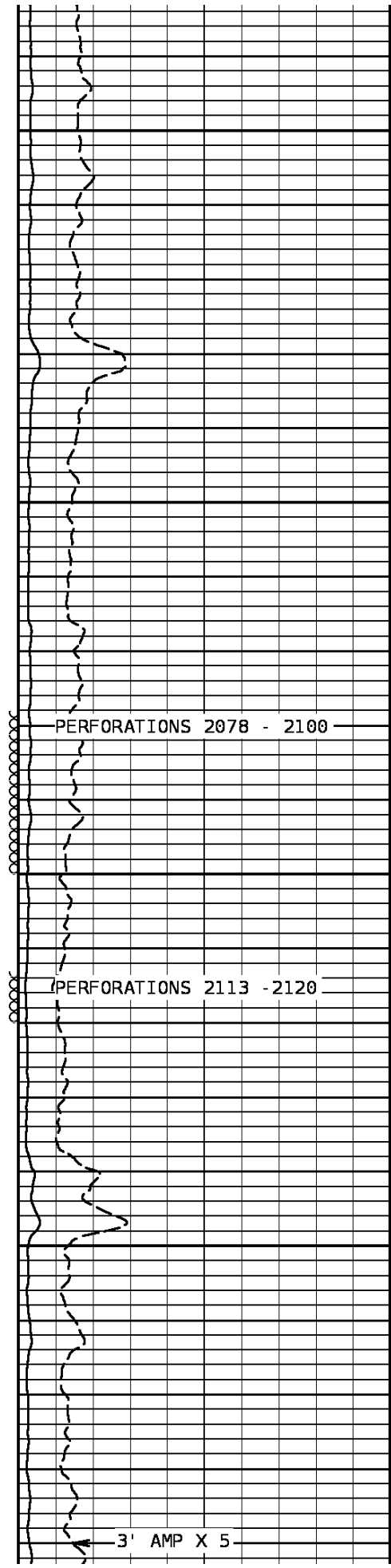
1900



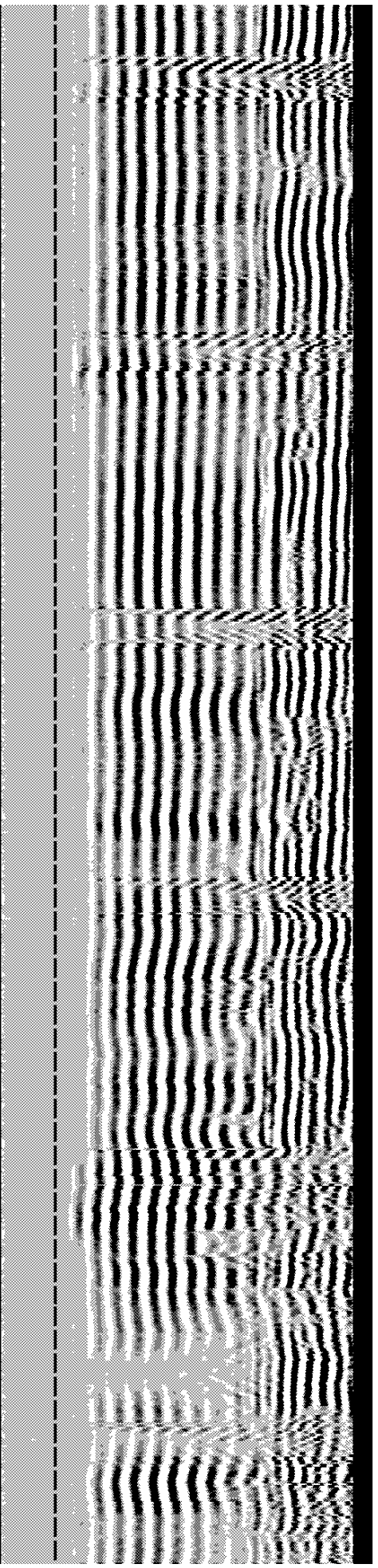


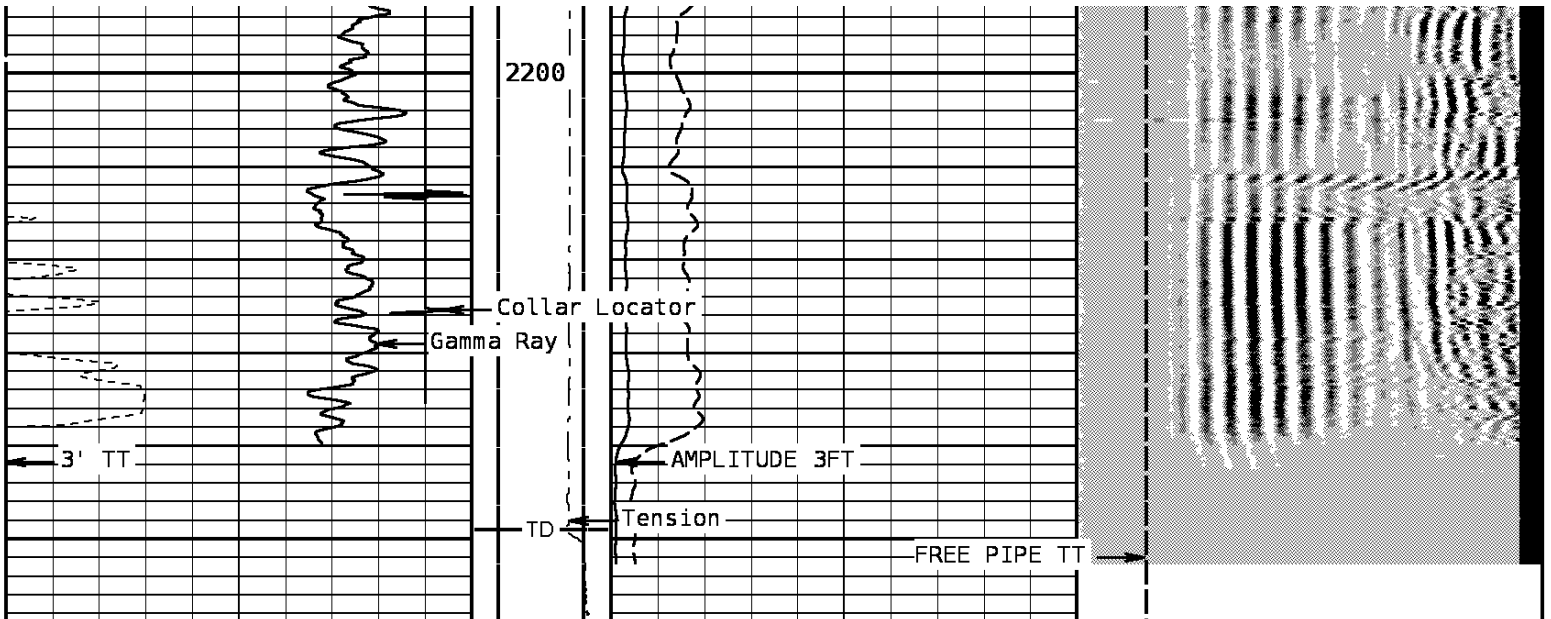
2000

2100



3' AMP X 5





TRAVEL TIME 3FT		Tension	AMPLITUDE 3FT		VARIABLE DENSITY 5FT	
330	Microseconds	230	1000	0	200	Microseconds
GAMMA RAY			AMPLIFIED 3FT AMP		FREE PIPE TT	
0	API	120	0	20	200.00	Microseconds
COLLAR LOCATOR						
-5400	Millivolts	600				

START DEPTH: 2259.0 DIRECTION: UP DATE: 09/17/2010 TIME: 20:05 MODE: RECOMPUTE
 RECOMPUTED DATE: 09/17/2010 TIME: 20:59

172076 M1

MAIN PASS

DEPTH SCALE: 5":100' VERSION: 80214133R"

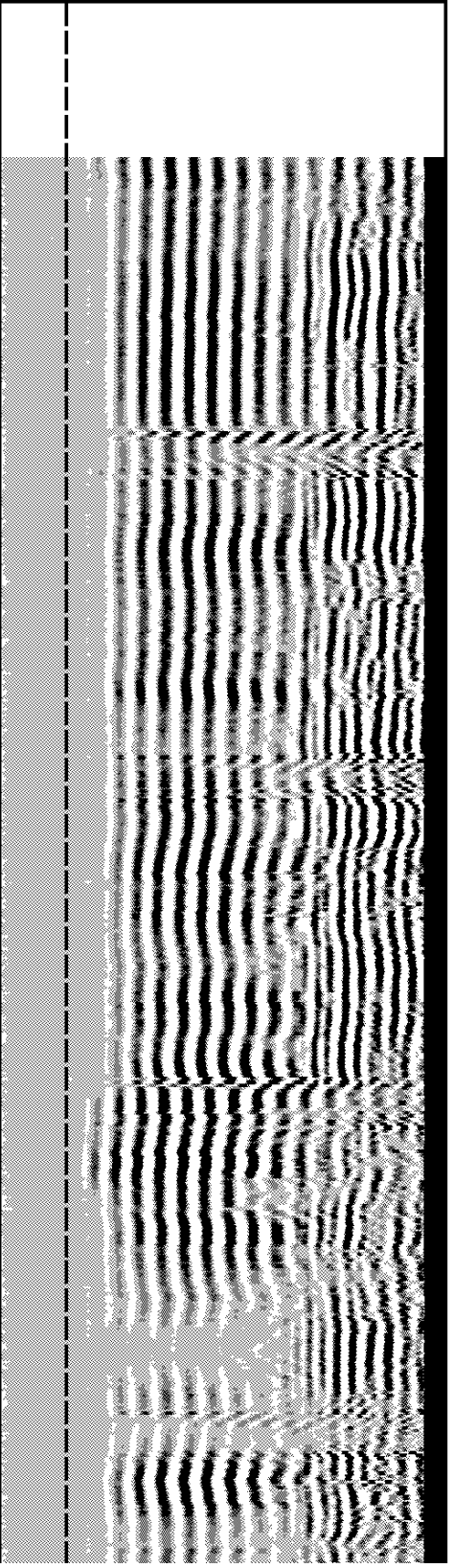
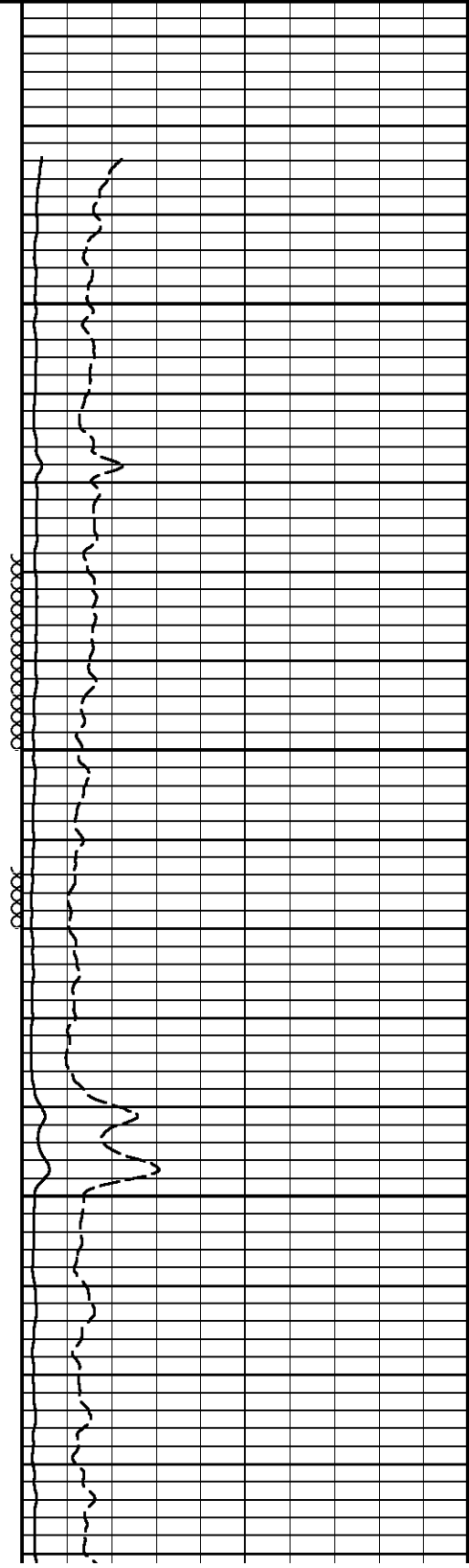
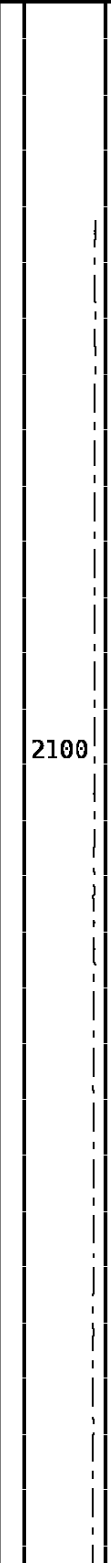
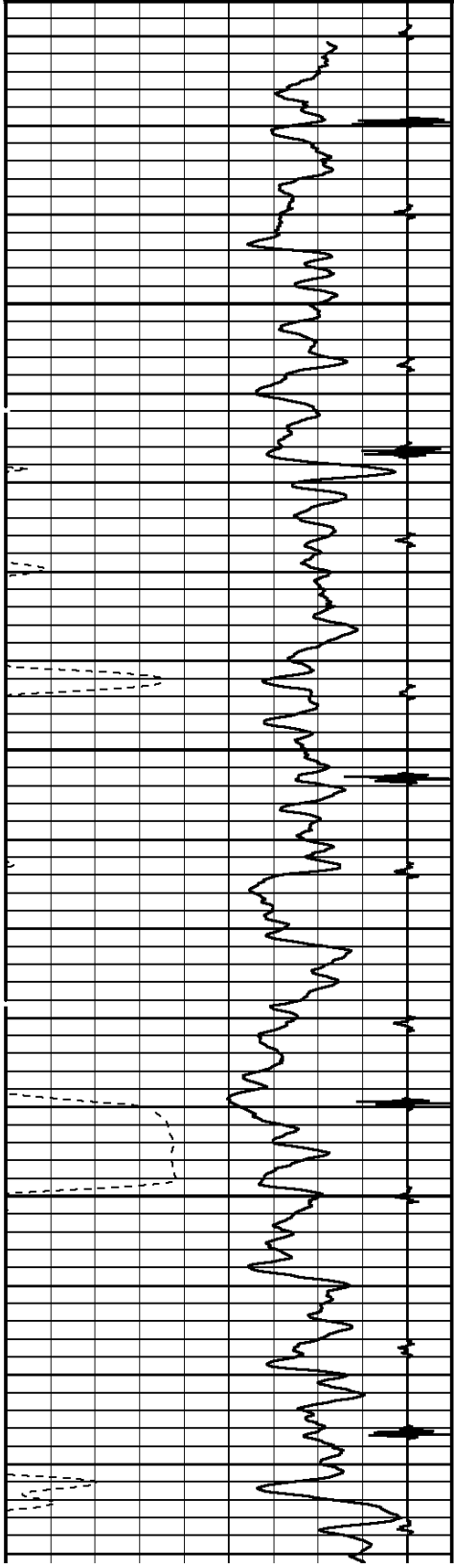
DEPTH SCALE: 5":100' VERSION: 80214133R"

MAIN PASS

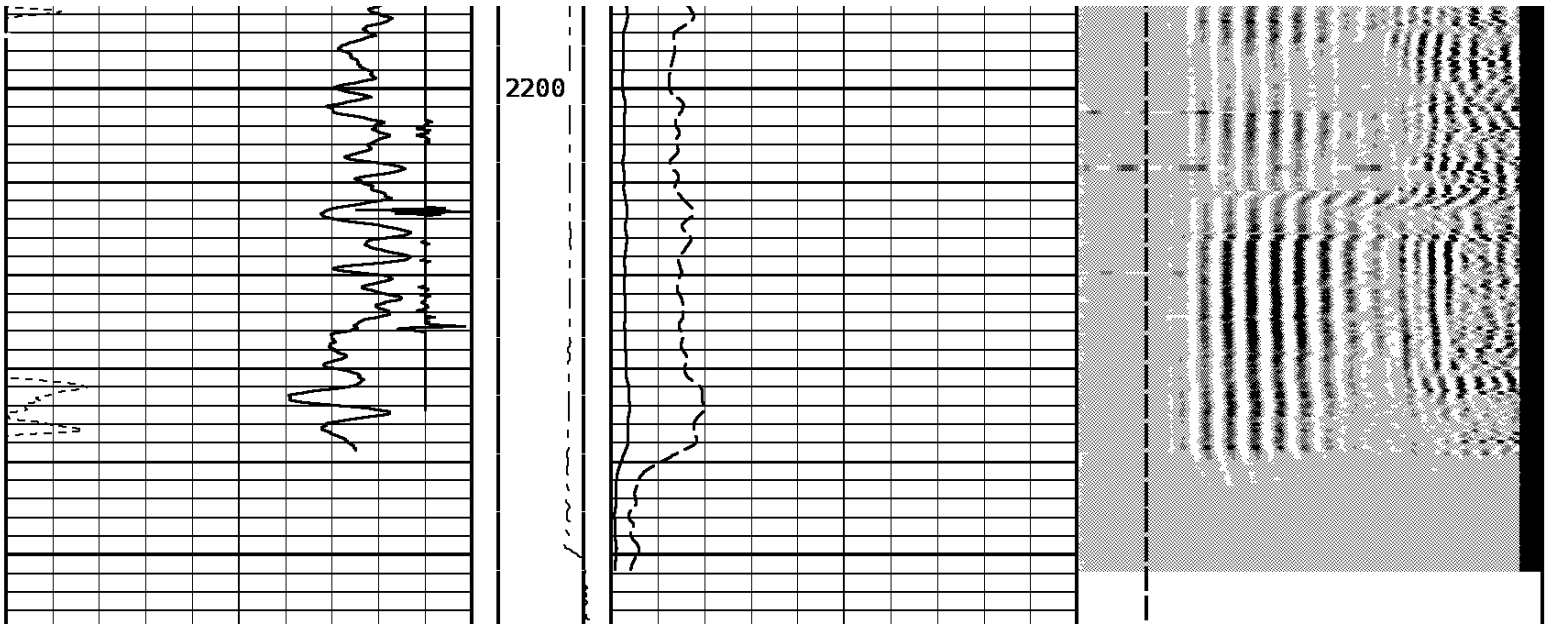
172076 RP1

FINISH DEPTH: 2032.8 Feet DIRECTION: UP DATE: 09/17/2010 TIME: 19:57 MODE: RECOMPUTE
 RECOMPUTED DATE: 09/17/2010 TIME: 20:14

COLLAR LOCATOR								
-5400	Millivolts	600						
GAMMA RAY			AMPLIFIED 3FT AMP			FREE PIPE TT		
0	API	120	0	Millivolts	20	200.00	Microseconds	1200.00
TRAVEL TIME 3FT			Tension			AMPLITUDE 3FT		
330	Microseconds	230	1000	0	0	200	Microseconds	1200



2100



TRAVEL TIME 3FT		Tension	AMPLITUDE 3FT		VARIABLE DENSITY 5FT						
330	Microseconds		230	1000	0	0	Millivolts	100	200	Microseconds	1200
GAMMA RAY			AMPLIFIED 3FT AMP		FREE PIPE TT						
0	API	120	0	0	Millivolts	20	200.00	Microseconds	1200.00		
COLLAR LOCATOR											
-5400	Millivolts	600									

START DEPTH: **2251.0** DIRECTION: **UP** DATE: **09/17/2010** TIME: **19:53** MODE: **RECOMPUTE**
 RECOMPUTED DATE: **09/17/2010** TIME: **20:14**

172076 RP1

MAIN PASS

DEPTH SCALE: **5":100'** VERSION: **80214133R**

CS400 09/17/10 20:49:56 Ver. 80214133R Service: sbt Job 172076

** Gamma Ray API Cal ** 80214133R

Use for logging sequence	<BEFORE>	Disregard background offset	<Y>
Use for calibration sequence	<BEFORE>	Standard decimal truncation	[1]
Calibration sample period	[60] sec	Measured decimal truncation	[1]
Standard units	[API]	Measured units	[CPS]

Date Time Points Polyn

Master	01/01/88	12:00	0	N
Before	01/01/88	12:00	2	N
After	08/10/10	17:24	2	N
Define	01/01/88	05:00	0	N

	Description	Standard	Measured	Minimum	Maximum	Deviation
Master						
Before	GR Background Cal	0.0	25.0	0.0	0.0	0.00
	GR API Cal	100.0	250.0	0.0	0.0	0.00
After	GR Background Cal	0.0	151.6	127.0	187.6	13.46
	GR API Cal	152.0	510.2	446.3	558.0	26.18
Define						

CS400 09/17/10 20:49:36 Ver. 80214133R Service: sbt Job 172076

** AMP 3FT ** 80214133R

Use for logging sequence	<BEFORE>	Disregard background offset	<N>
Use for calibration sequence	<BEFORE>	Standard decimal truncation	[1]
Calibration sample period	[20] sec	Measured decimal truncation	[1]
Standard units	[mv]	Measured units	[mv]

	Date	Time	Points	Polyn
Master	11/29/01	11:40	2	N
Before	09/24/08	09:37	2	N
After	01/01/88	12:00	2	N
Define	01/01/88	12:00	2	N

	Description	Standard	Measured	Minimum	Maximum	Deviation
Master						
	ZERO	0.0	0.0	0.0	0.0	0.00
	PLUS	81.0	1650.3	1650.3	1650.3	0.64
Before						
	ZERO	1.0	20.6	22.0	29.3	2.09
	PLUS	72.0	1801.5	1442.9	1491.7	14.19
After						
	ZERO	0.0	0.0	0.0	0.0	0.00
	PLUS	81.0	72.0	0.0	0.0	0.00
Define						
	ZERO	1.0	0.9	0.0	0.0	0.00
	PLUS	72.0	991.0	0.0	0.0	0.00

Cased Hole Cablehead

Weight 2.2 lb
 Length 1.02 ft
 Max. Diameter 1.44 in

Total Stack Weight 207.3 in air
 Total Stack Length 27.83 ft

Slim Hole Centralizer

Weight 11.9 lb
 Length 2.49 ft
 Max. Diameter 2.717 in

Collar Locator

Weight 39.8 lb
 Length 3.40 ft
 Max. Diameter 2.717 in

Slim Hole Gamma Ray

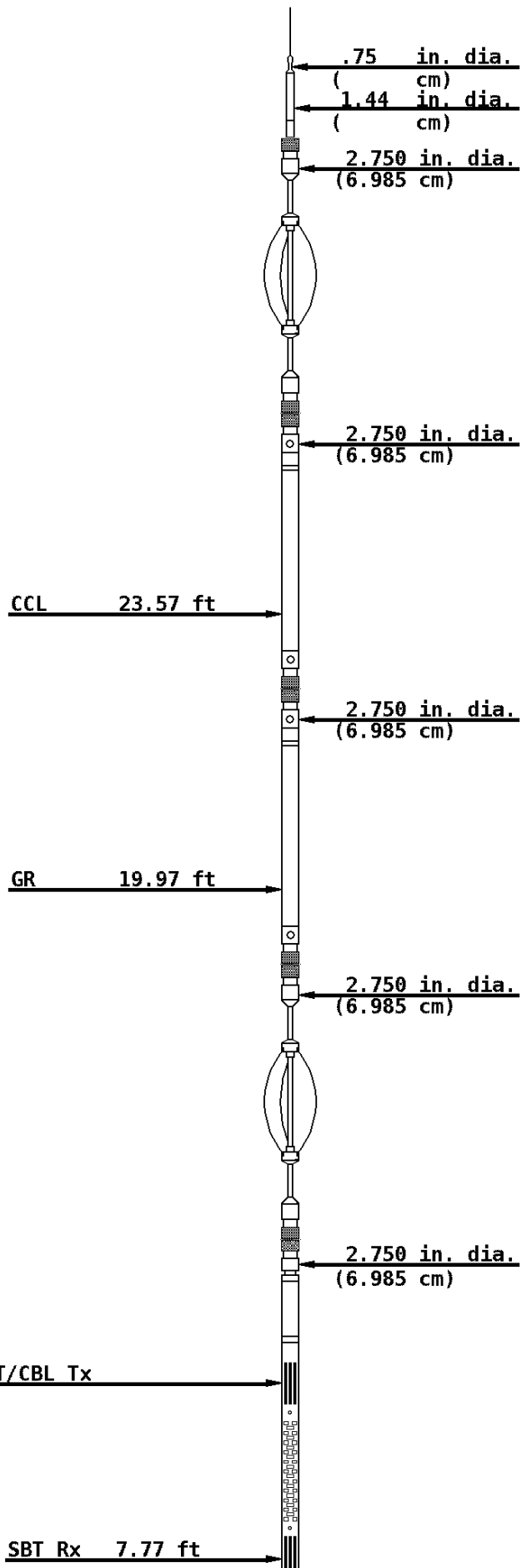
Weight 39.8 lb
 Length 4.71 ft
 Max. Diameter 2.717 in

Slim Hole Centralizer

Weight 11.9
 Length 3.08 ft
 Max. Diameter 2.717 in

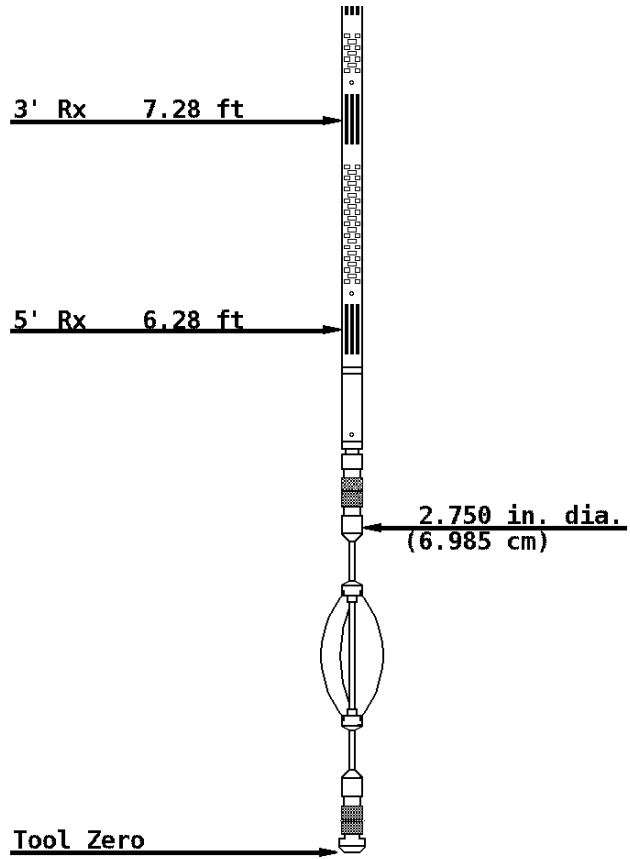
Sector Bond

Weight 89.8 lb
 Length 10.32 ft
 Max. Diameter 2.717 in



Slim Hole Centralizer

Weight 11.9 lb
Length 2.82 ft
Max. Diameter 2.717 in



COMPANY BRIDGE ENERGY

WELL KORN 1-22

FIELD WILDCAT

COUNTY PAYETTE

STATE IDAHO



Weatherford®