

REMARKS

MAIN PASS
2722' TO SURFACE

DEPTH SCALE: 5":100'

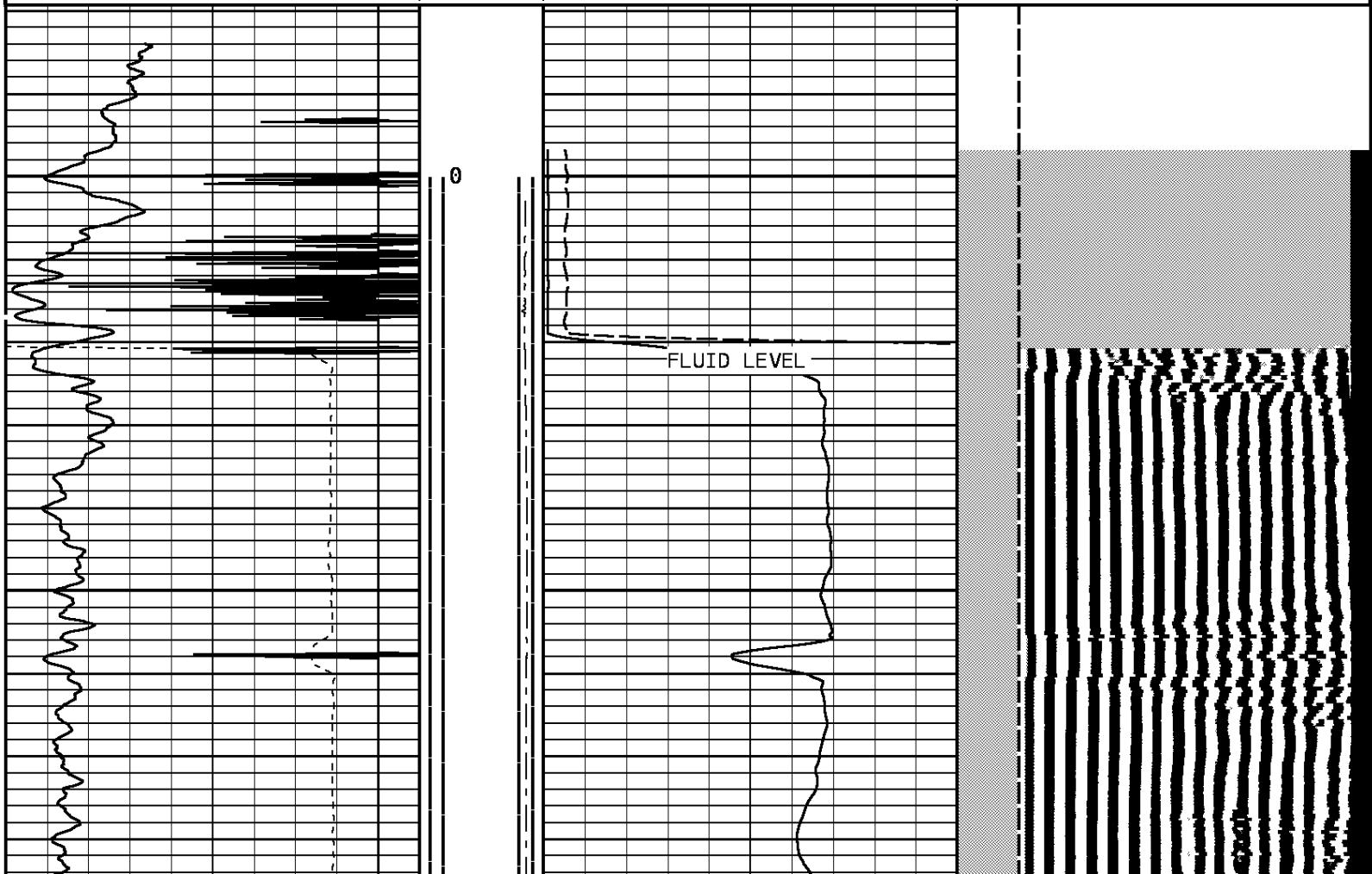
VERSION: 80214133R"

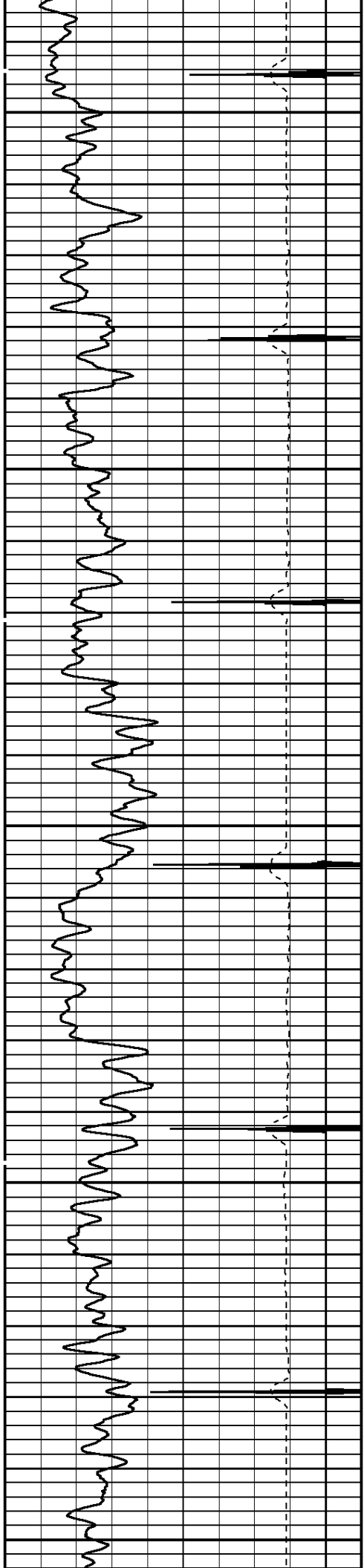
MAIN PASS

172122 MAINFINAL

FINISH DEPTH: 3.0 Feet DIRECTION: UP DATE: 08/17/2010 TIME: 10:55 MODE: RECOMPUTE
RECOMPUTED DATE: 08/17/2010 TIME: 12:12

COLLAR LOCATOR											
-90	Millivolts	10									
GAMMA RAY			AMPLIFIED 3FT AMP			FREE PIPE TT					
0	API	120	0	Millivolts	20	200.00	Microseconds	1200.00			
TRAVEL TIME 3FT			Tension			AMPLITUDE 3FT			VARIABLE DENSITY 5FT		
330	Microseconds	230	1000	0	0	0	Millivolts	100	200	Microseconds	1200

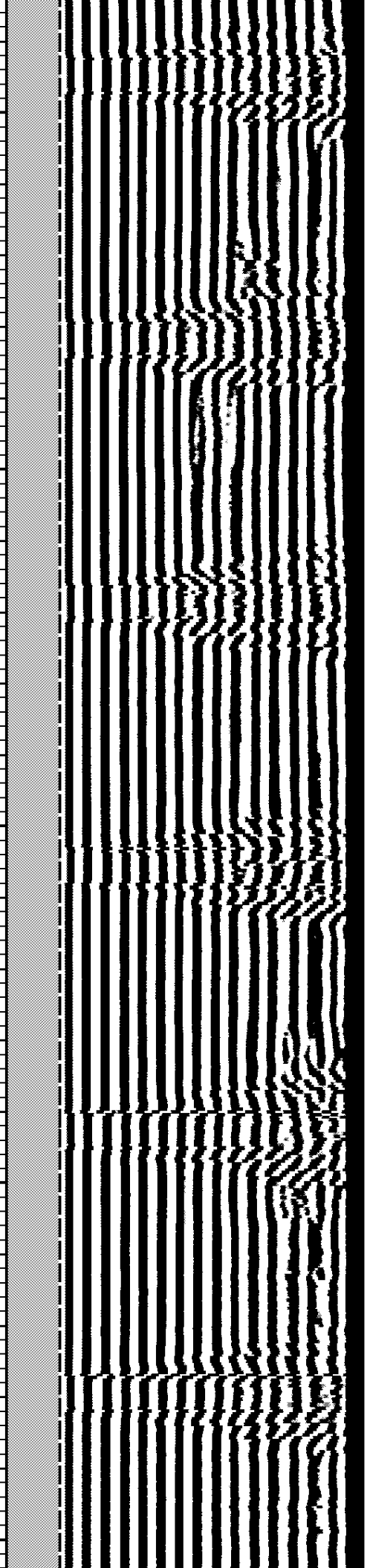
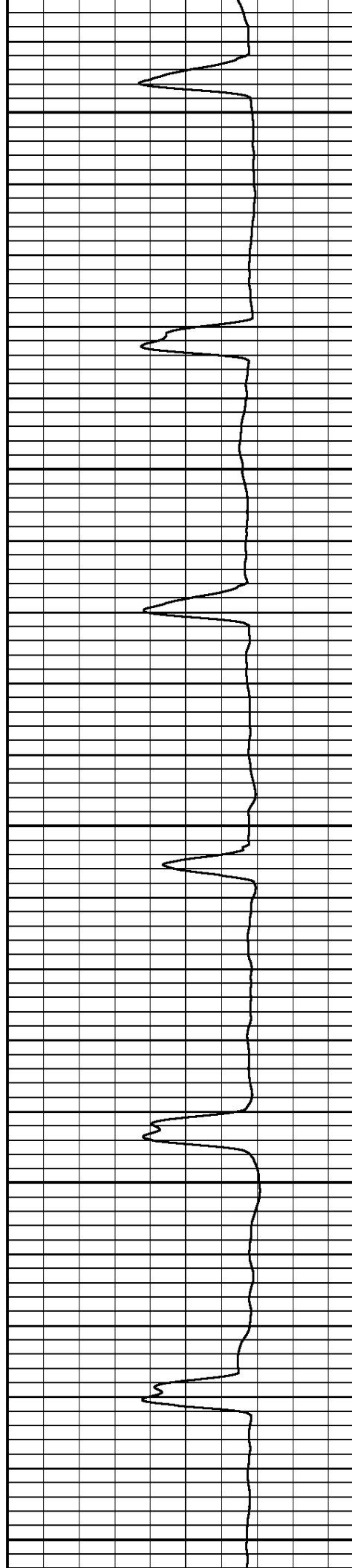


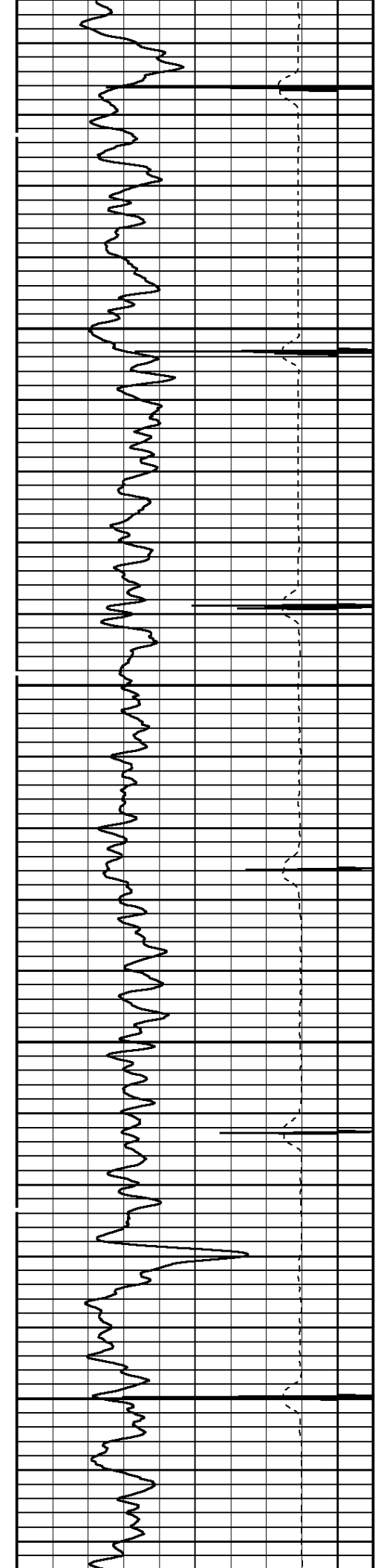


100

200

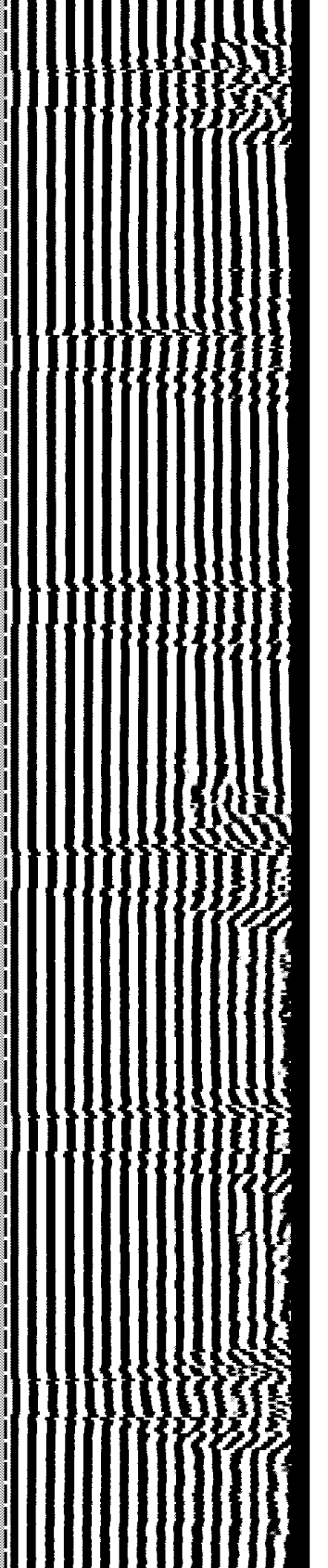
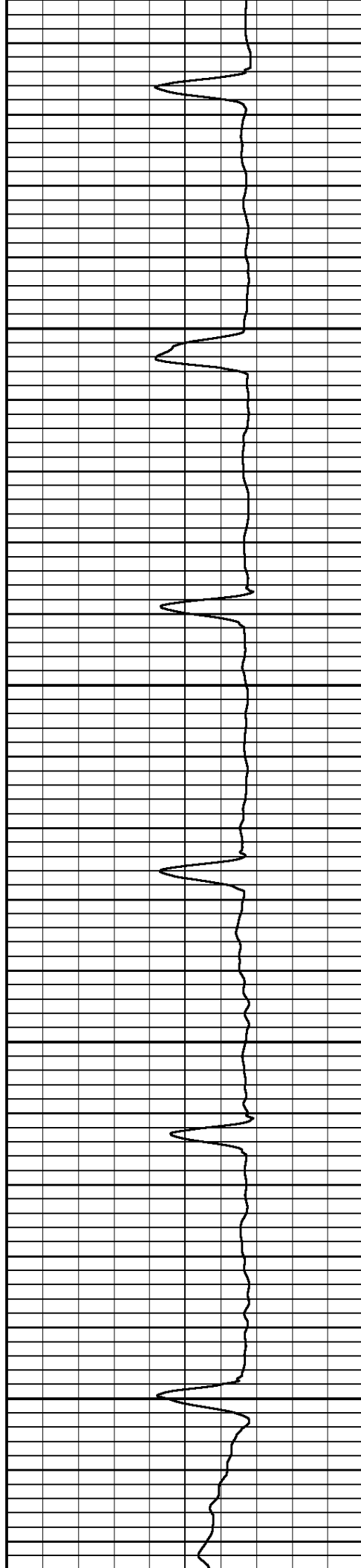
300

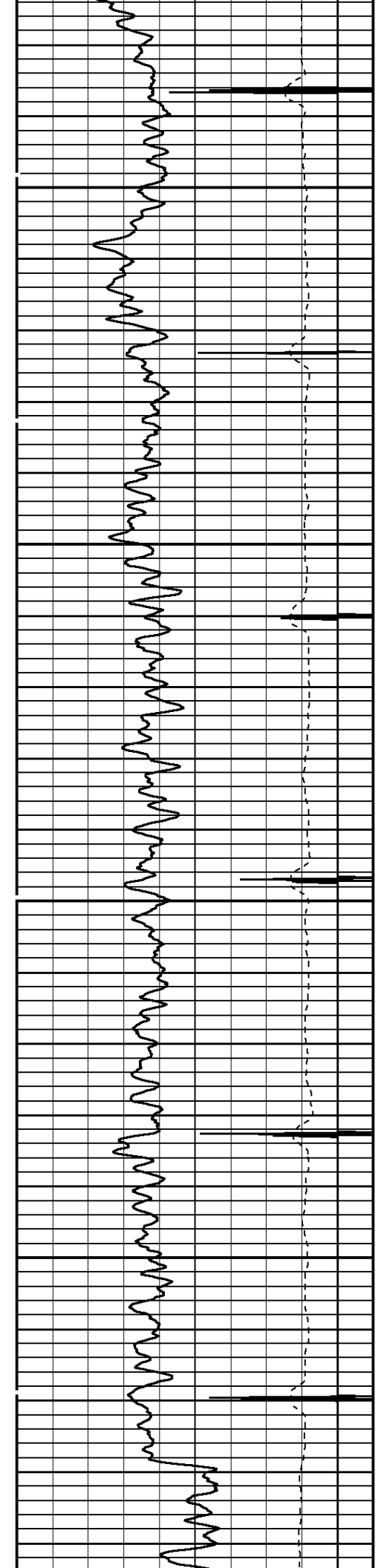




400

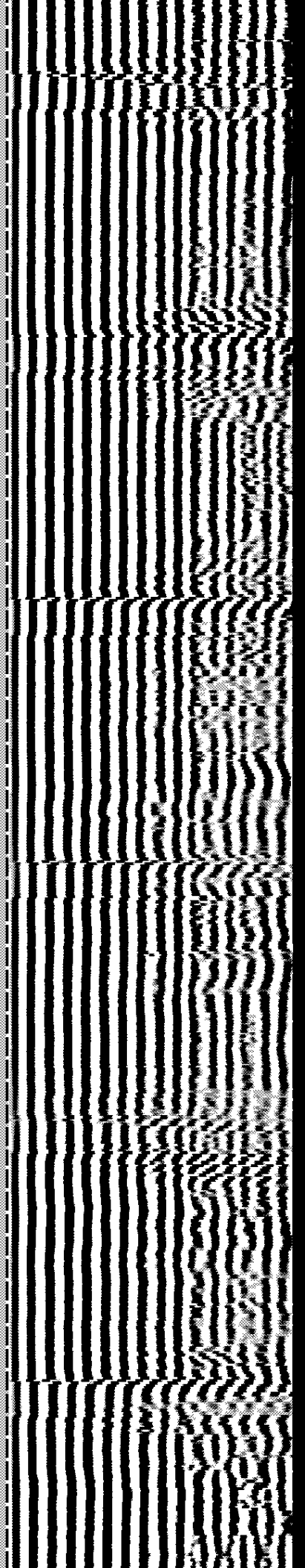
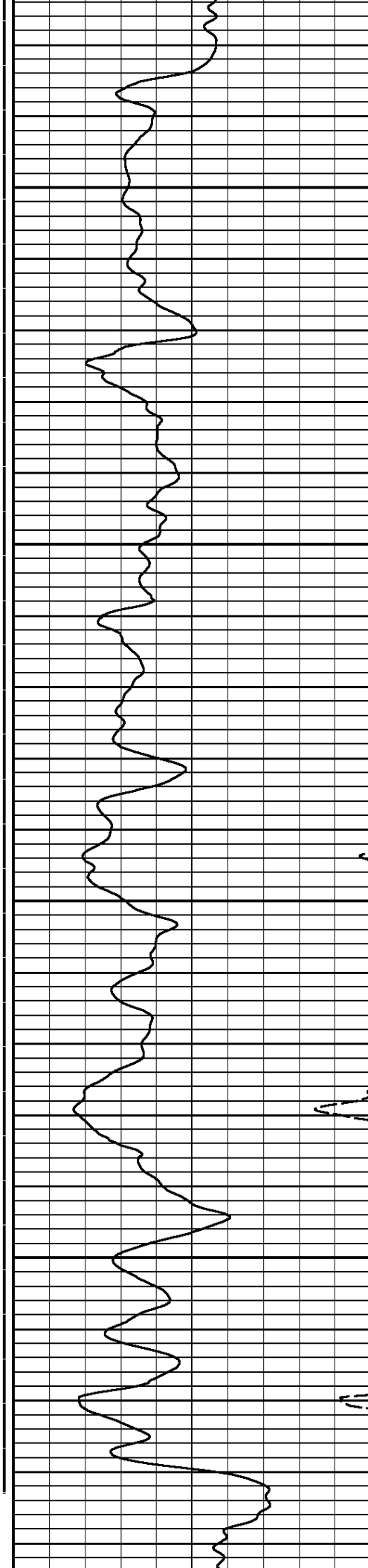
500

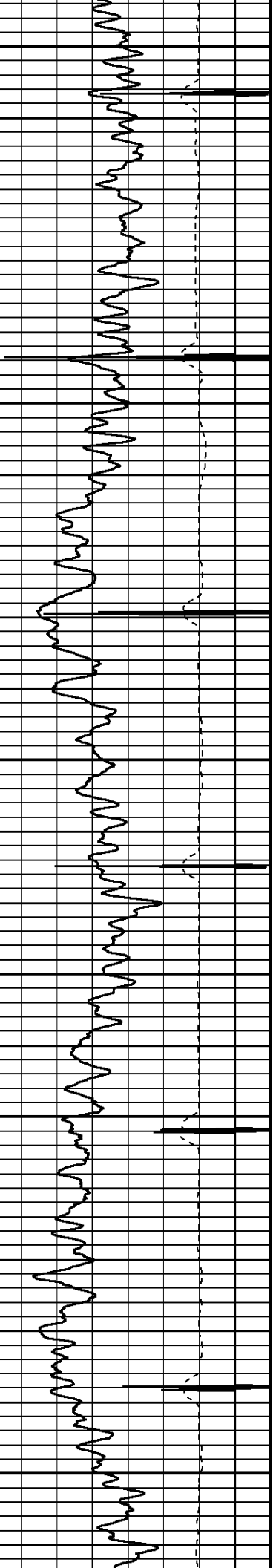




600

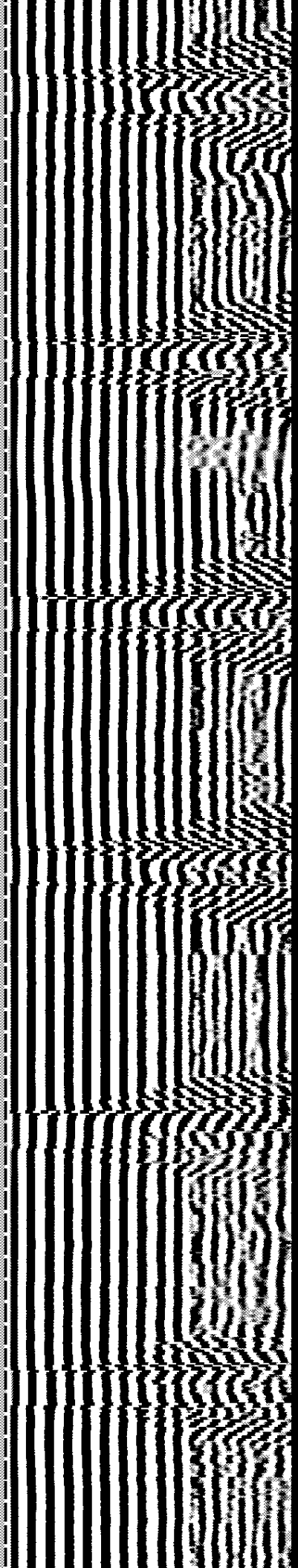
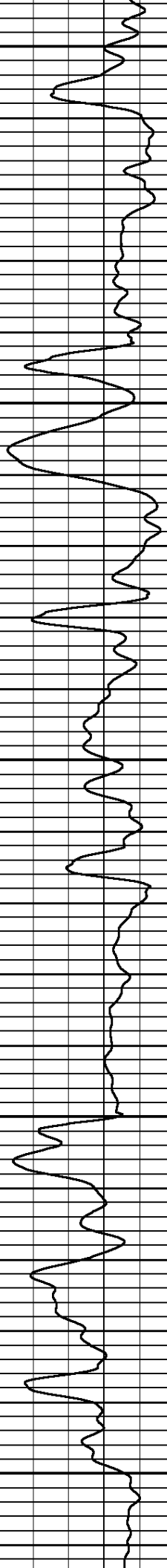
700

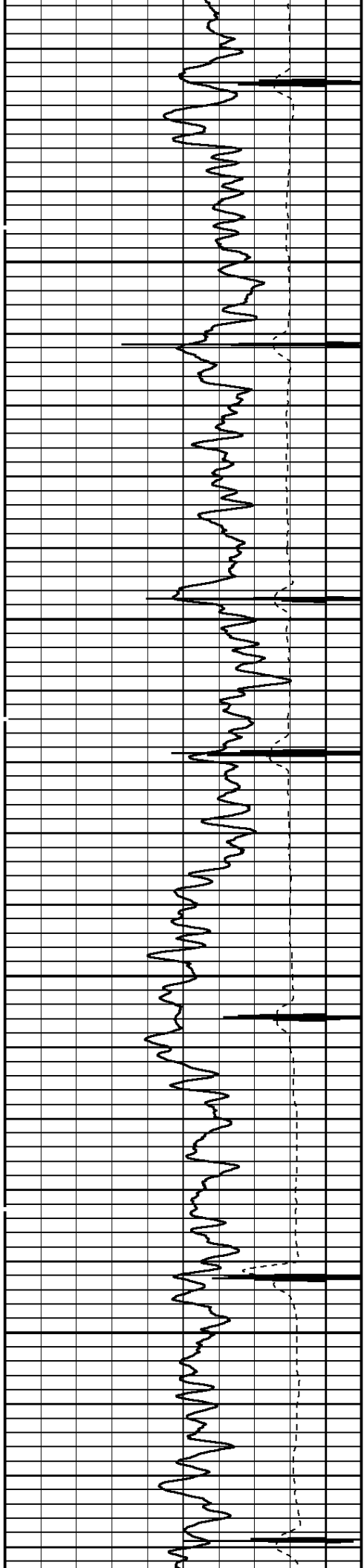




800

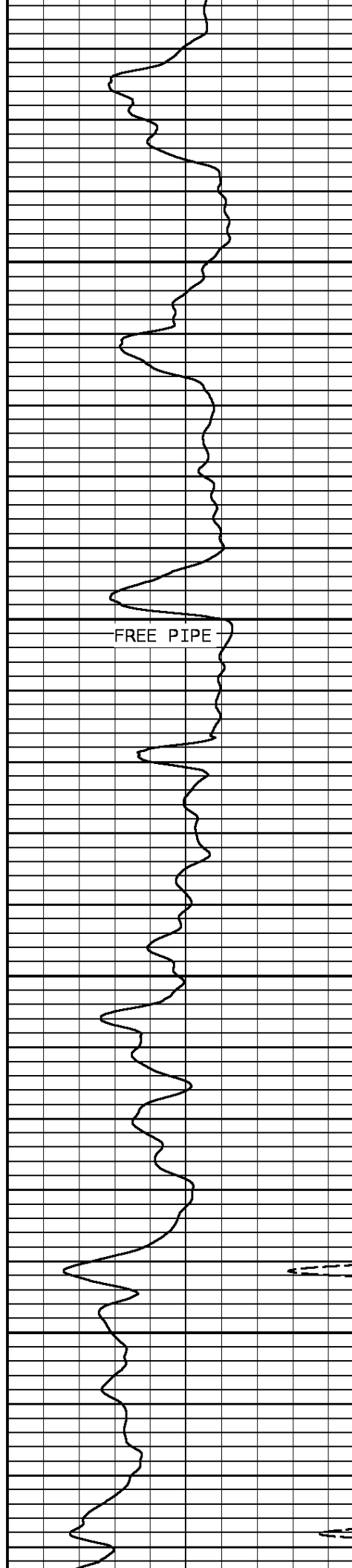
900



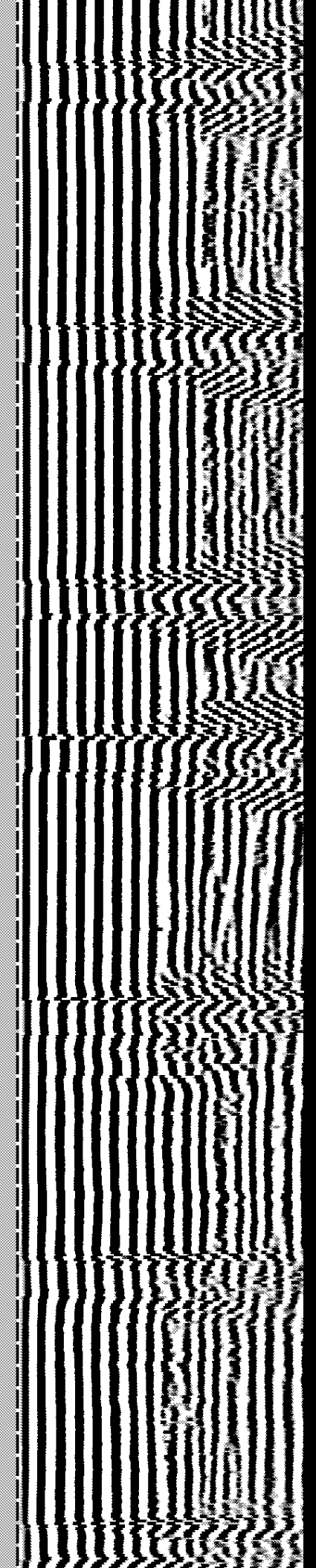


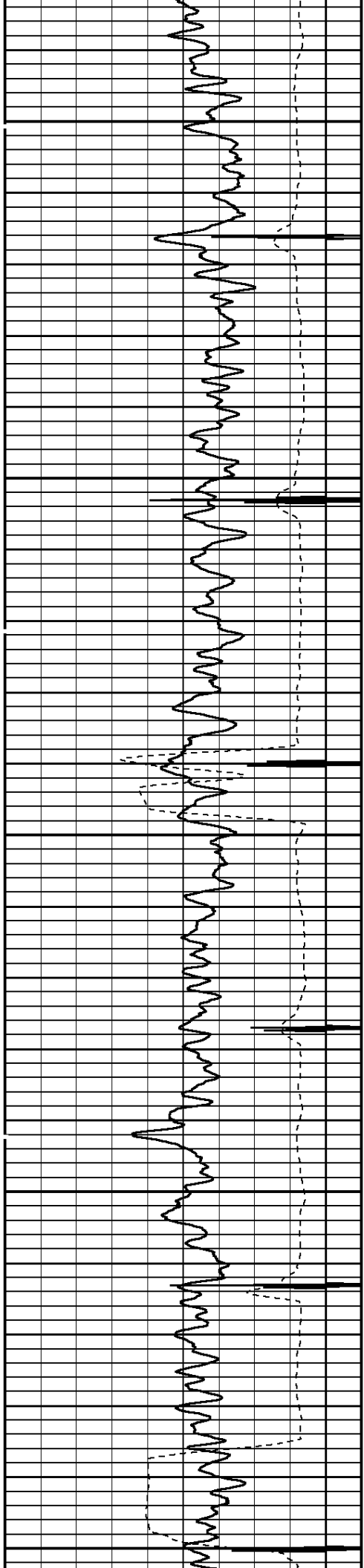
1000

1100



FREE PIPE

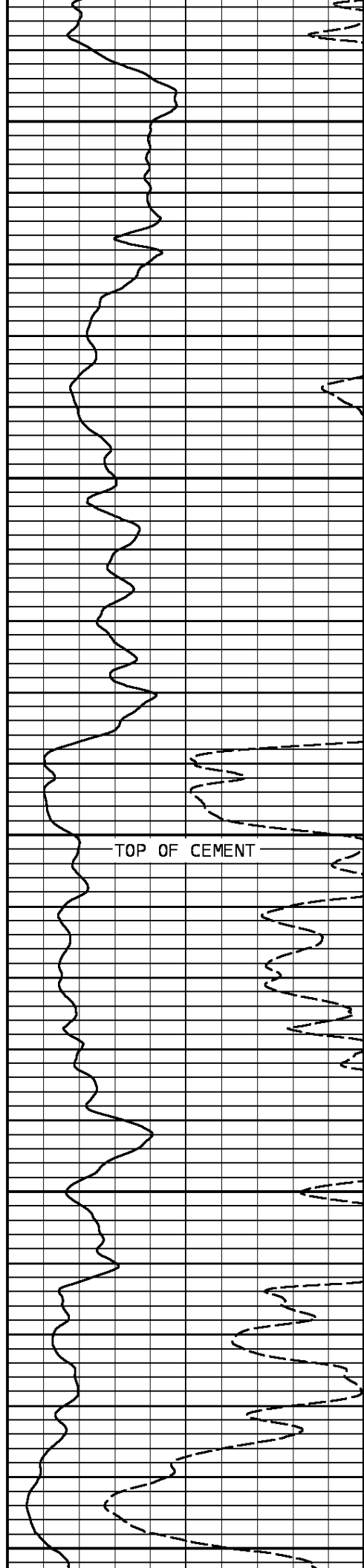




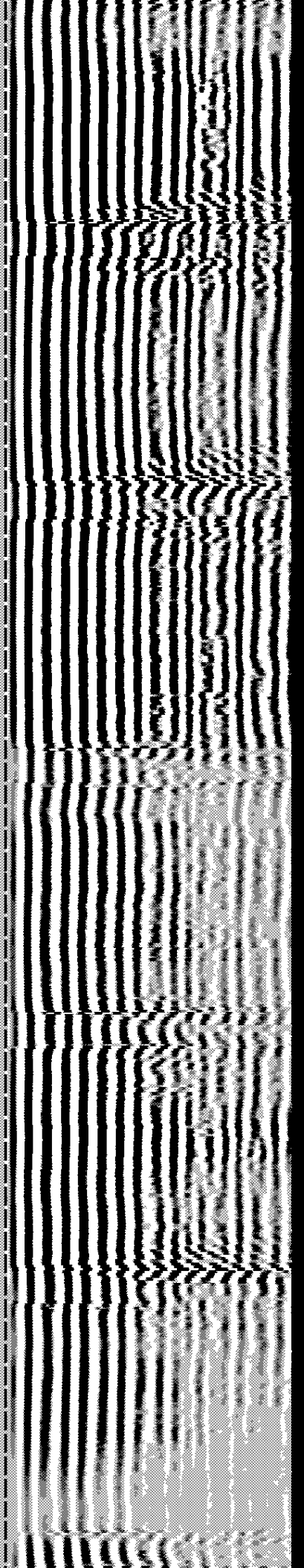
1200

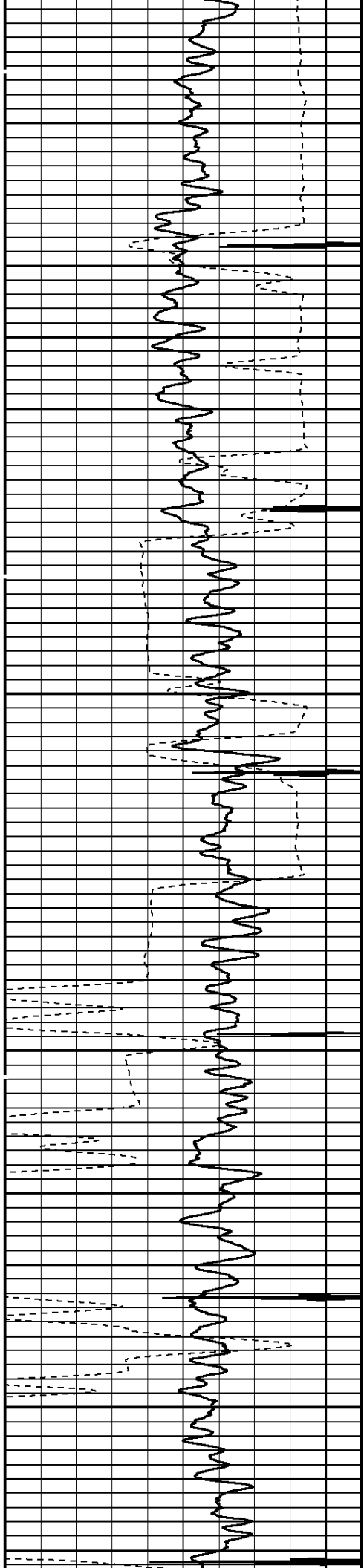
1300

1400



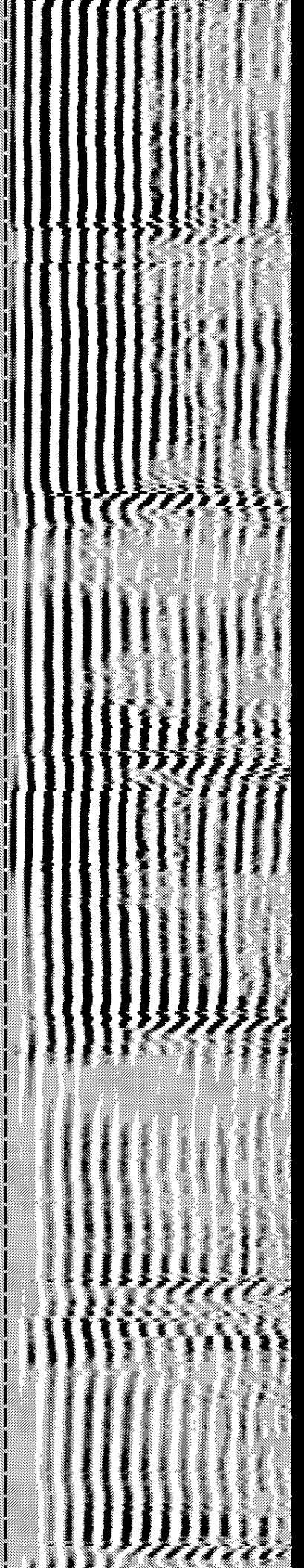
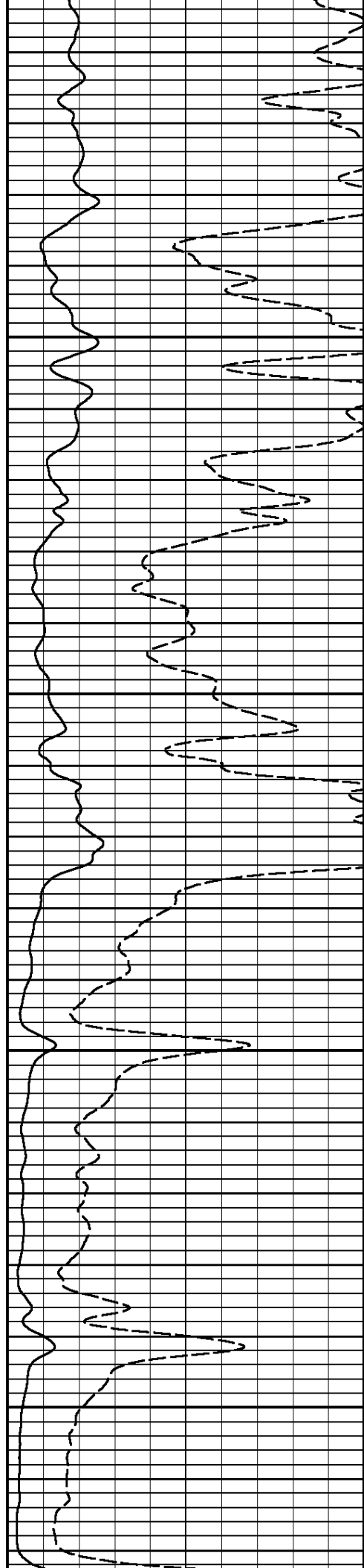
TOP OF CEMENT

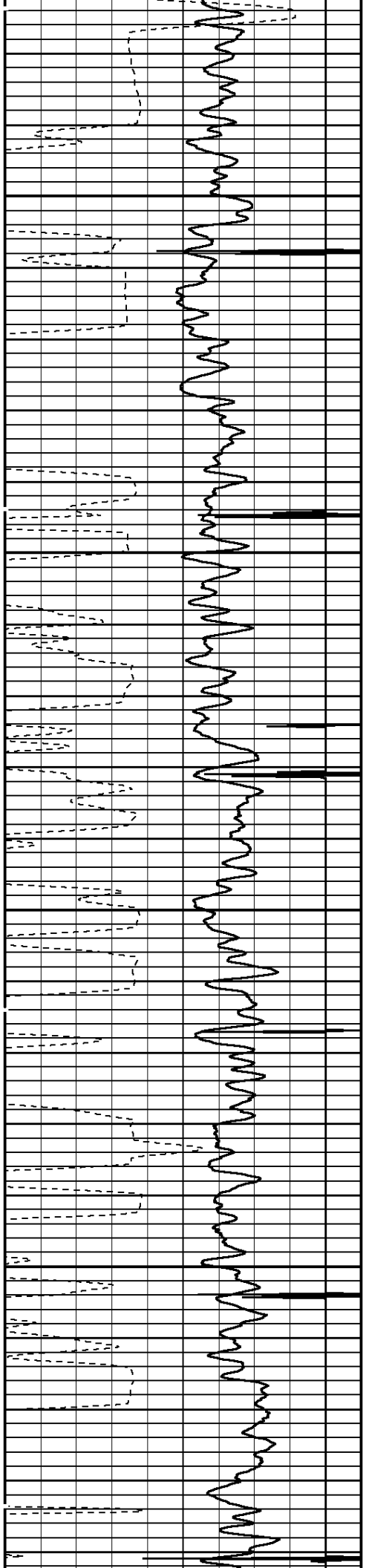




1500

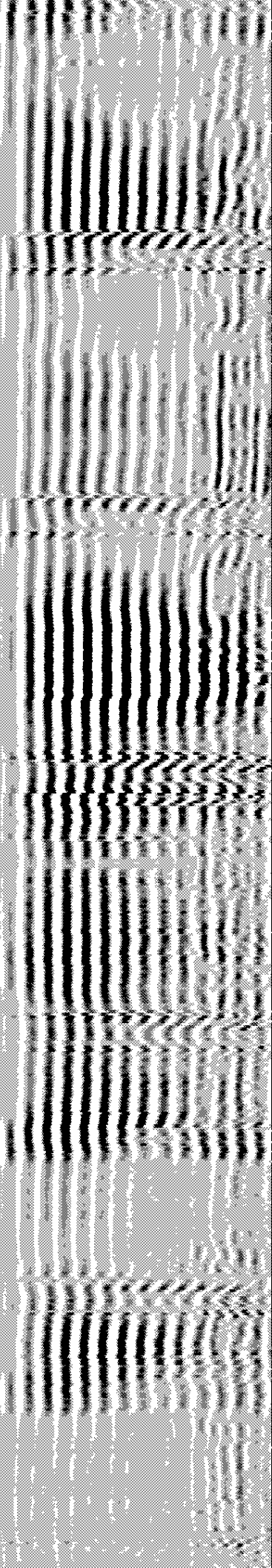
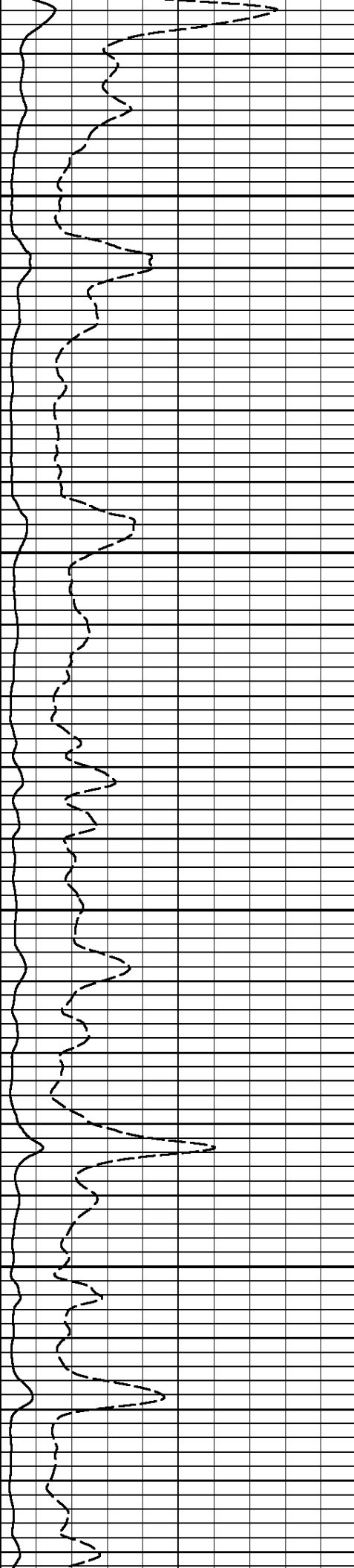
1600

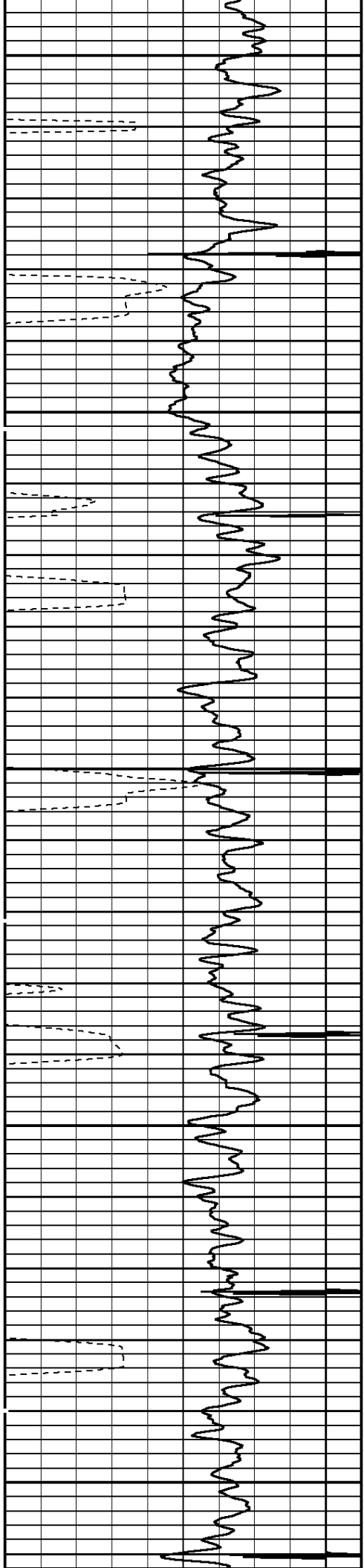




1700

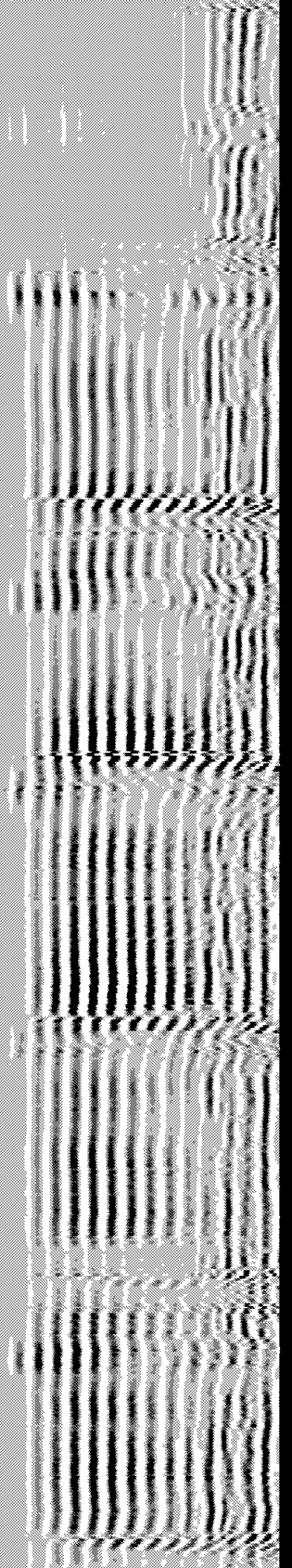
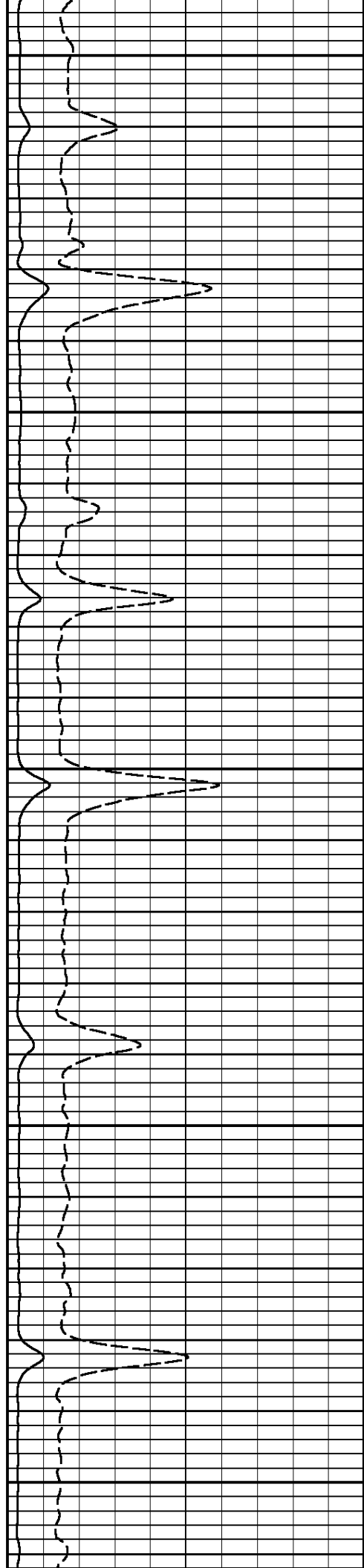
1800

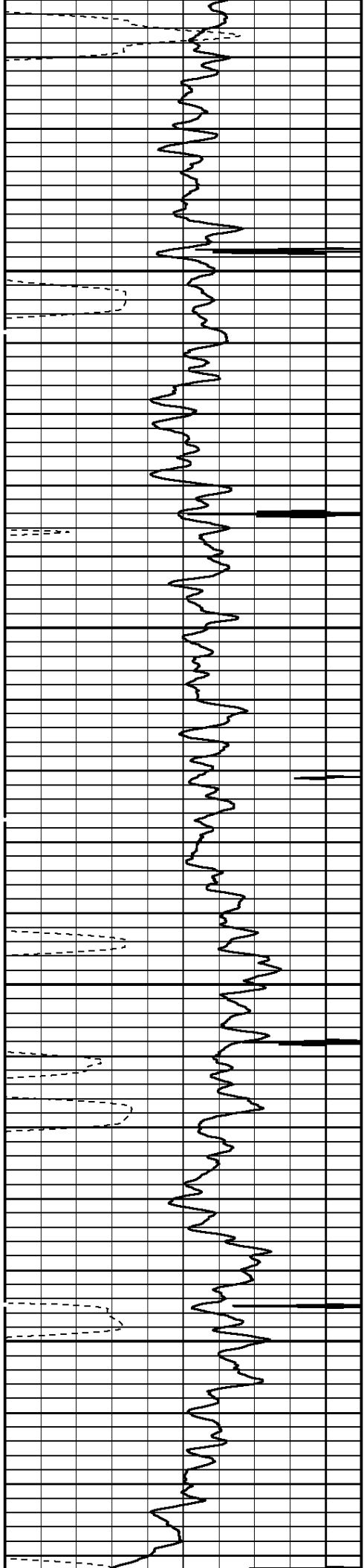




1900

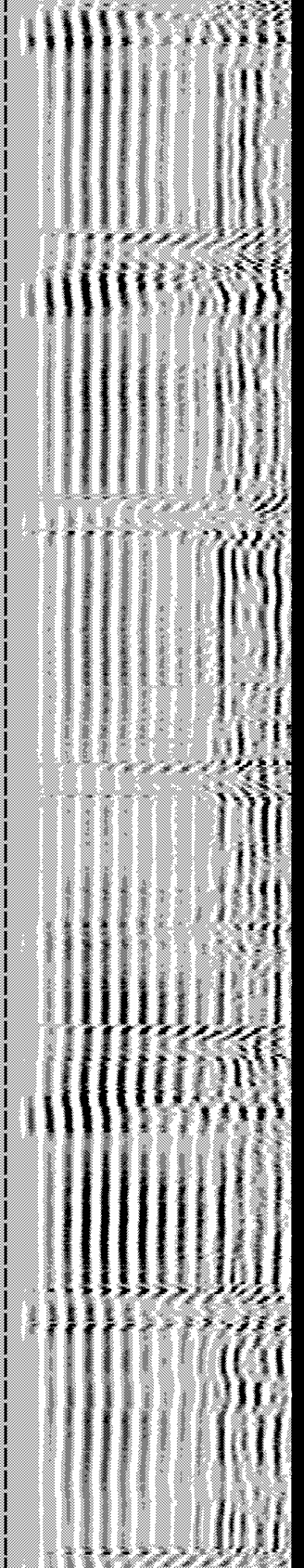
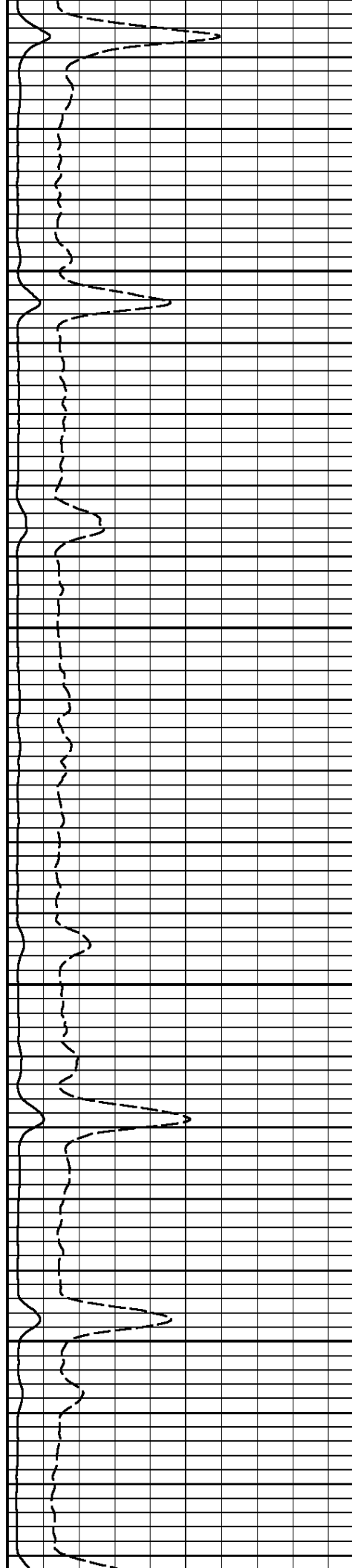
2000

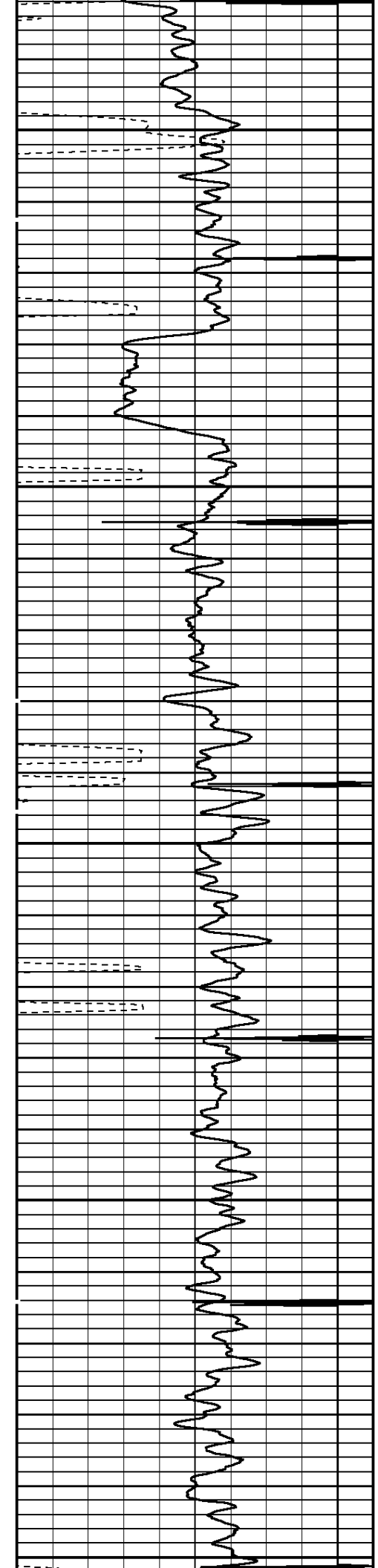




2100

2200

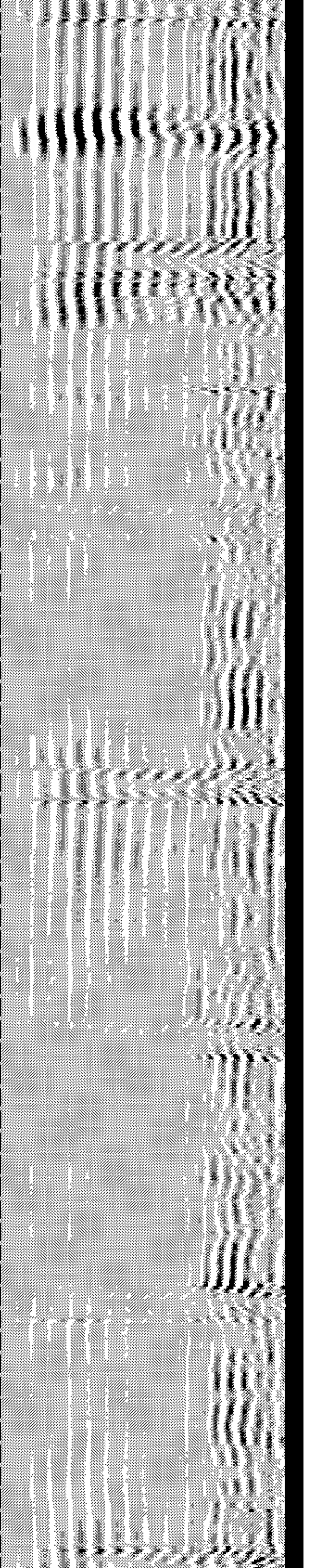
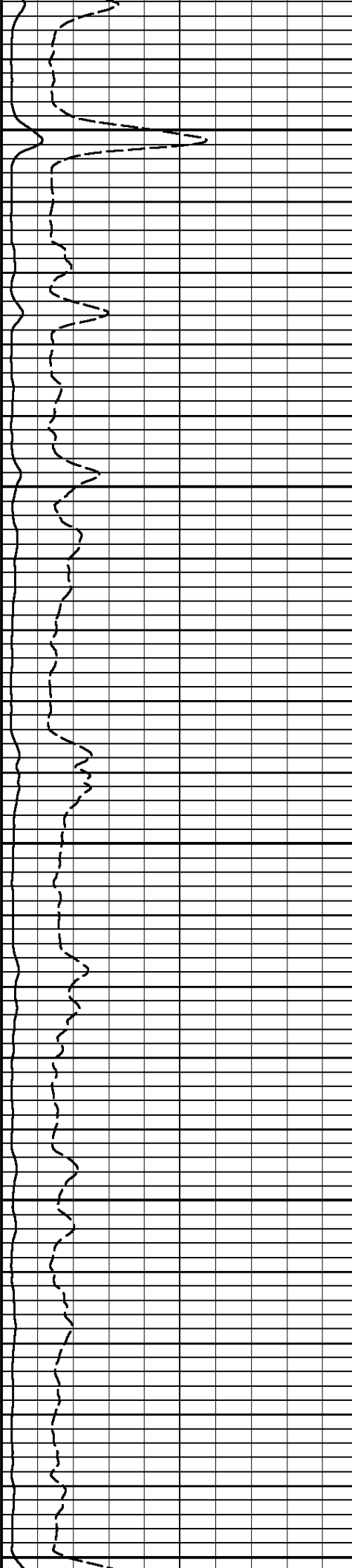


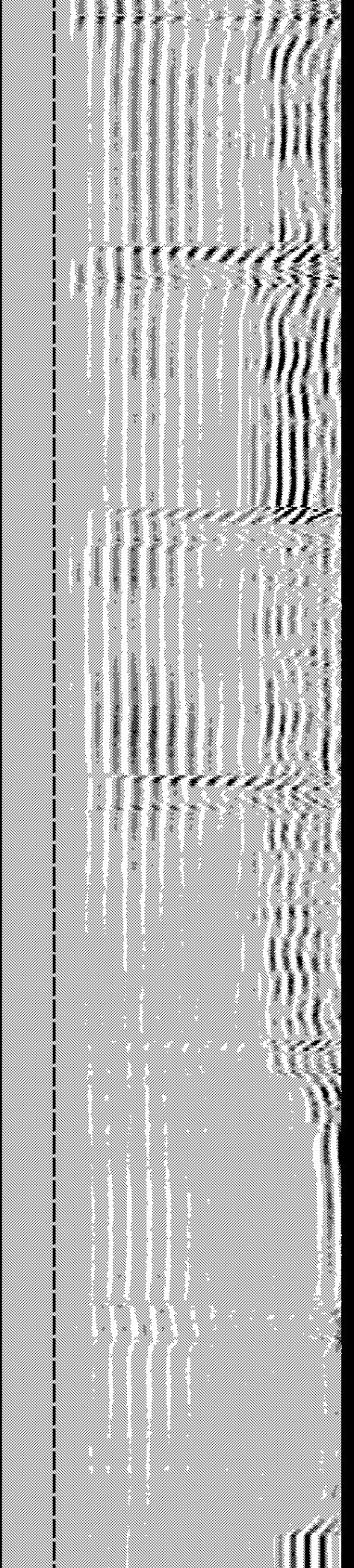
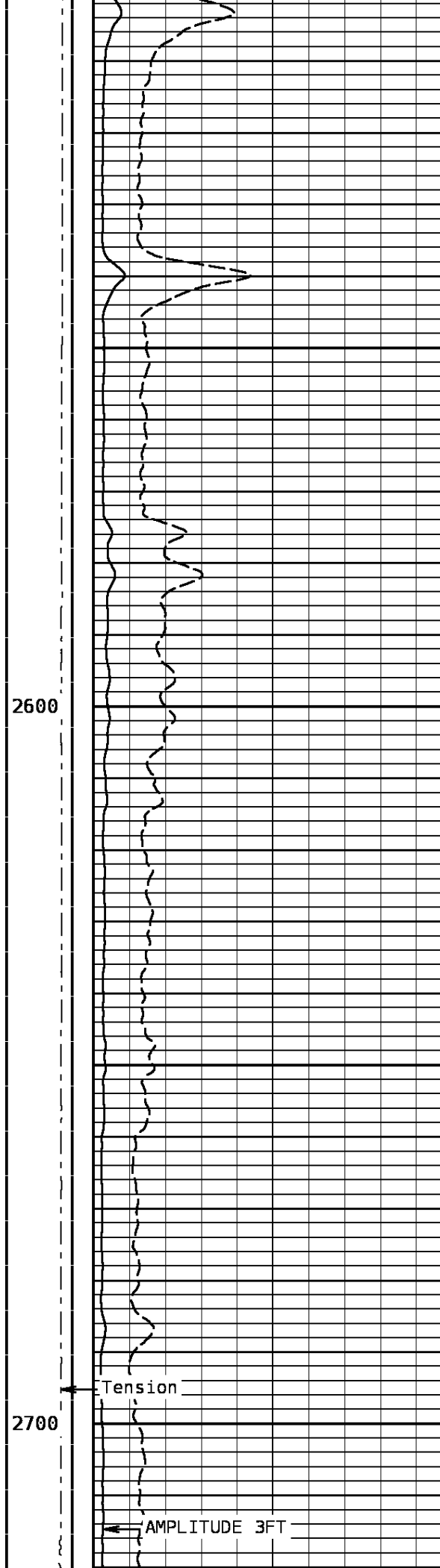
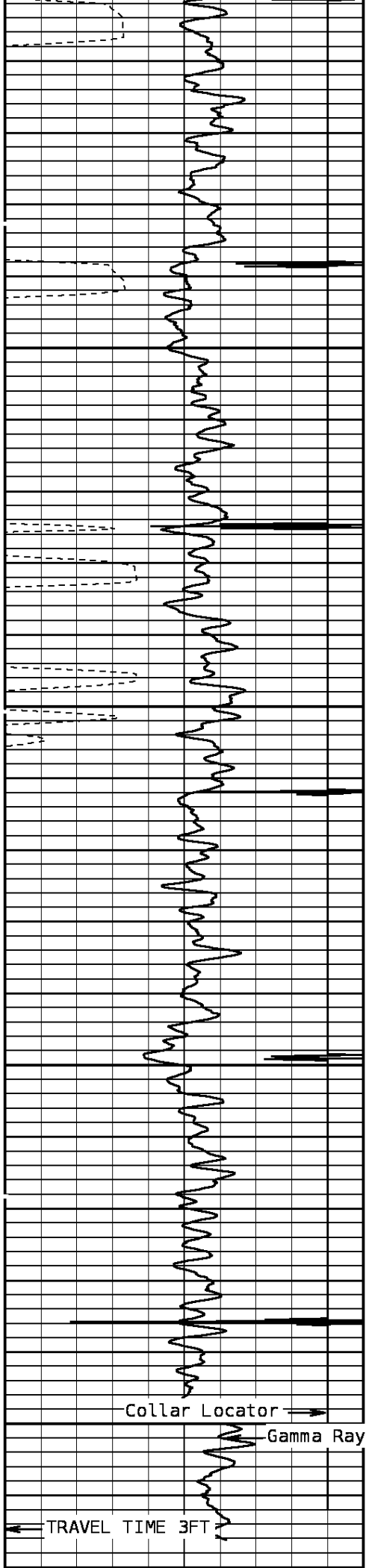


2300

2400

2500





Collar Locator →
Gamma Ray
← TRAVEL TIME 3FT

2600

2700

Tension

← AMPLITUDE 3FT

TRAVEL TIME 3FT			Tension			AMPLITUDE 3FT			VARIABLE DENSITY 5FT		
330	Microseconds	230	1000	0	0	0	Millivolts	100	200	Microseconds	1200
GAMMA RAY						AMPLIFIED 3FT AMP			FREE PIPE TT		
0	API	120				0	Millivolts	20	200.00	Microseconds	1200.00
COLLAR LOCATOR											
-90	Millivolts	10									

START DEPTH: **2735.4** DIRECTION: **UP** DATE: **08/17/2010** TIME: **10:54** MODE: **RECOMPUTE**
 RECOMPUTED DATE: **08/17/2010** TIME: **12:11**

172122 MAINFINAL

MAIN PASS

DEPTH SCALE: **5":100'**

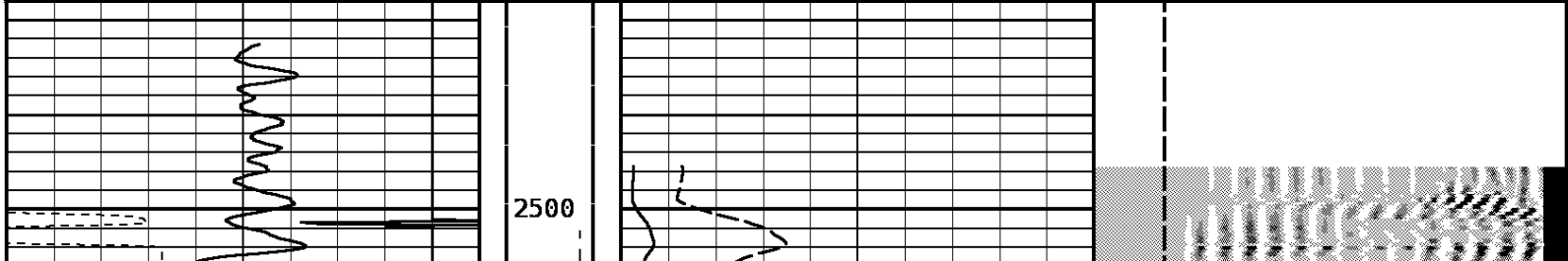
VERSION: **80214133R"**

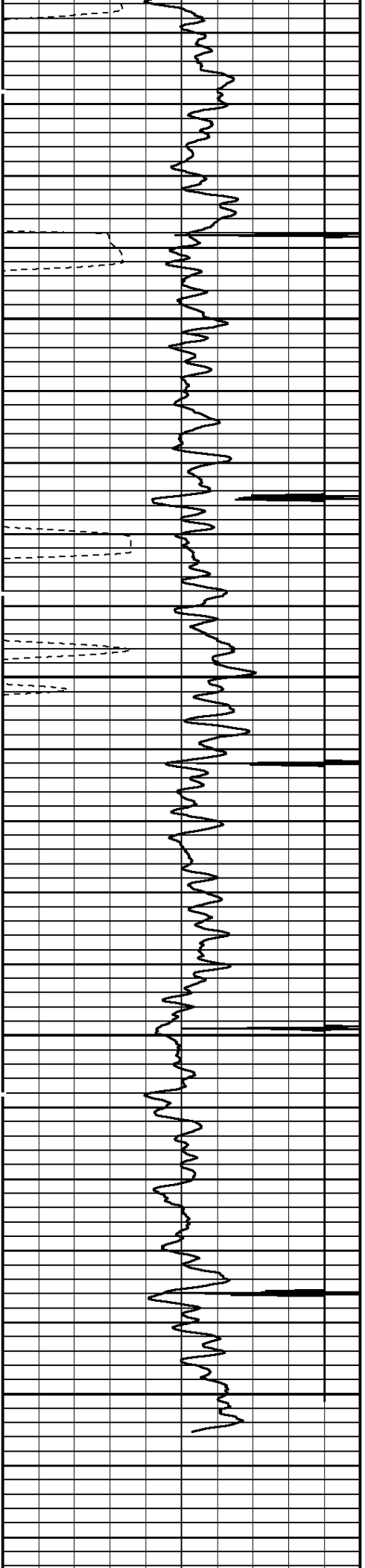
DEPTH SCALE: 5":100'									VERSION: 80214133R"		
REPEAT PASS											

172122 REPEAT

FINISH DEPTH: **2498.7** Feet DIRECTION: **UP** DATE: **08/17/2010** TIME: **08:59** MODE: **RECOMPUTE**
 RECOMPUTED DATE: **08/17/2010** TIME: **11:30**

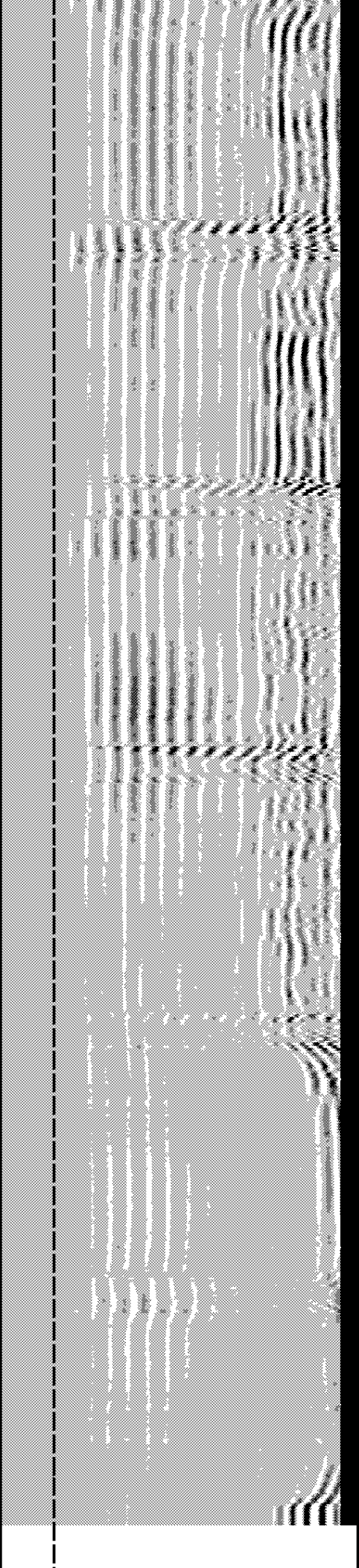
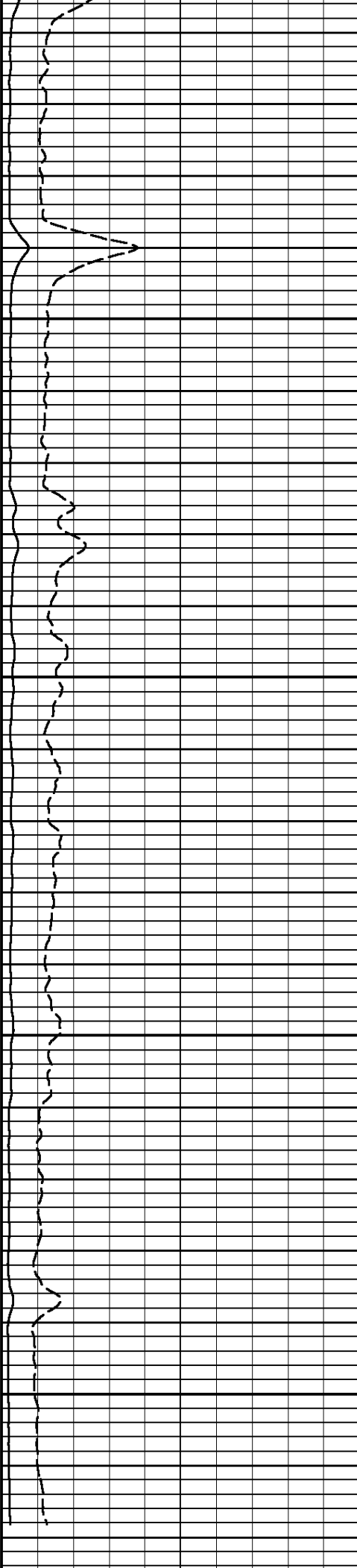
COLLAR LOCATOR											
-90	Millivolts	10									
GAMMA RAY						AMPLIFIED 3FT AMP			FREE PIPE TT		
0	API	120				0	Millivolts	20	200.00	Microseconds	1200.00
TRAVEL TIME 3FT			Tension			AMPLITUDE 3FT			VARIABLE DENSITY 5FT		
330	Microseconds	230	1000	0	0	0	Millivolts	100	200	Microseconds	1200





2600

2700



TRAVEL TIME 3FT			Tension		AMPLITUDE 3FT		VARIABLE DENSITY 5FT			
330	Microseconds	230	1000	0 0	0	Millivolts	100	200	Microseconds	1200
GAMMA RAY					AMPLIFIED 3FT AMP		FREE PIPE TT			
0	API	120			0	Millivolts	20	200.00	Microseconds	1200.00
COLLAR LOCATOR										
-90	Millivolts	10								

START DEPTH: **2721.6** DIRECTION: **UP** DATE: **08/17/2010** TIME: **08:55** MODE: **RECOMPUTE**
 RECOMPUTED DATE: **08/17/2010** TIME: **11:30**

172122 REPEAT

REPEAT PASS

DEPTH SCALE: **5":100'**

VERSION: **80214133R"**

08/10/10 17:24 -68.9 F Ver 80214133R Job

Gamma Ray After Survey Calibration

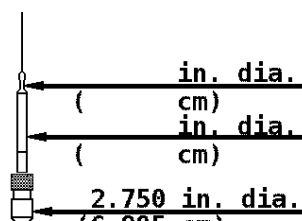
Tool Type: GRB-AA Serial No: 212
 Calibrator No:

Background	Calibrator	Standard	Units
151.6	510.2	152.0	API

Delta Counts Per Sec: 358.6 CPS/API = 2.359

Cased Hole Cablehead

Weight 2.2 lb
 Length 1.02 ft
 Max. Diameter 1.685 in
 Total Stack Weight 219.2 lb in air
 Total Stack Length 27.85 ft



(6.985 cm)

Slim Hole Centralizer

Weight 11.9 lb
Length 2.49 ft
Max. Diameter 2.717 in

Collar Locator

Weight 39.8 lb
Length 3.40 ft
Max. Diameter 2.717 in

Slim Hole Gamma Ray

Weight 39.8 lb
Length 4.71 ft
Max. Diameter 2.717 in

Slim Hole Centralizer

Weight 23.8 lb
Length 3.08 ft
Max. Diameter 2.717 in

Sector Bond

Weight 89.8 lb
Length 10.32 ft
Max. Diameter 2.717 in

2.750 in. dia.
(6.985 cm)

CCL 23.57 ft

2.750 in. dia.
(6.985 cm)

GR 19.97 ft

2.750 in. dia.
(6.985 cm)

2.750 in. dia.
(6.985 cm)

SBT/CBL Tx

SBT Rx 7.77 ft

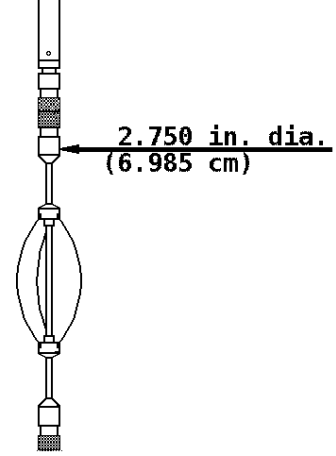
3' Rx 7.28 ft

5' Rx 6.28 ft



Slim Hole Centralizer

Weight 11.9 lb
Length 2.82 ft
Max. Diameter 2.717 in



COMPANY BRIDGE ENERGY, LLC.

WELL TRACY TRUST 3-2

FIELD HAMILTON

COUNTY PAYETTE

STATE WY



Weatherford®