

# HALLIBURTON

**SPECTRAL DENSITY  
DUAL SPACED NEUTRON  
ARRAY COMPENSATED  
TRUE RESISTIVITY  
CORRECTED**

COMPANY	BRIDGE/PARAMAX	COMPANY	BRIDGE/PARAMAX
WELL	TRACY TRUST #3-2	WELL	TRACY TRUST #3-2
FIELD	HAMILTON	FIELD	HAMILTON
COUNTY	PAYETTE	COUNTY	PAYETTE
STATE	ID	STATE	ID
Permanent Datum	GL	Elev	2246.00 ft
Log measured from	KB	Elev	2262.00 ft
Drilling measured from	KB	Elev	2246.00 ft
Date	14-Aug-10	Other Services:	RWCH KMI BSAT DGCS
Run No.	3	Location	SHL 2033' FSL & 647' FWL SEC 2, T-7N, R-4W
Depth - Driller	2810.00 ft	Sect	2
Depth - Logger	2817.00 ft	Twp	7N
Bottom - Logged Interval	2808.0 ft	Rge	4W
Top - Logged Interval	733.0 ft		
Casing - Driller	9.625 in @ 893.00 ft		
Casing - Logger	731.00 ft		
Bit Size	8.750 in		
Type Fluid In Hole	OBM		
Density	F. Viscosity 9.8 ppg		
Alkalinity	P. Viscosity 0.0032 g/cc		
HTHP @ Meas. Temp.	5.4 mpm @ 200.00 degF		
Solids	Wgt. Material 13.5 %		
Oil	Water Ratio 89		
Water Phase Salinity	6000.00 ppm Cl-		
Oil Type	DIESEL		
Electrical Stability	1920 V		
Time Since Circulation	6.0 hr		
Time on Bottom	14-Aug-10 16:34		
Max Rec. Temperature	131.0 degF @ 2817.0 ft		
Equipment	Location 11014883		
Recorded By	W. MATSON		
Witnessed By	JEFF KIRN		

Fold here

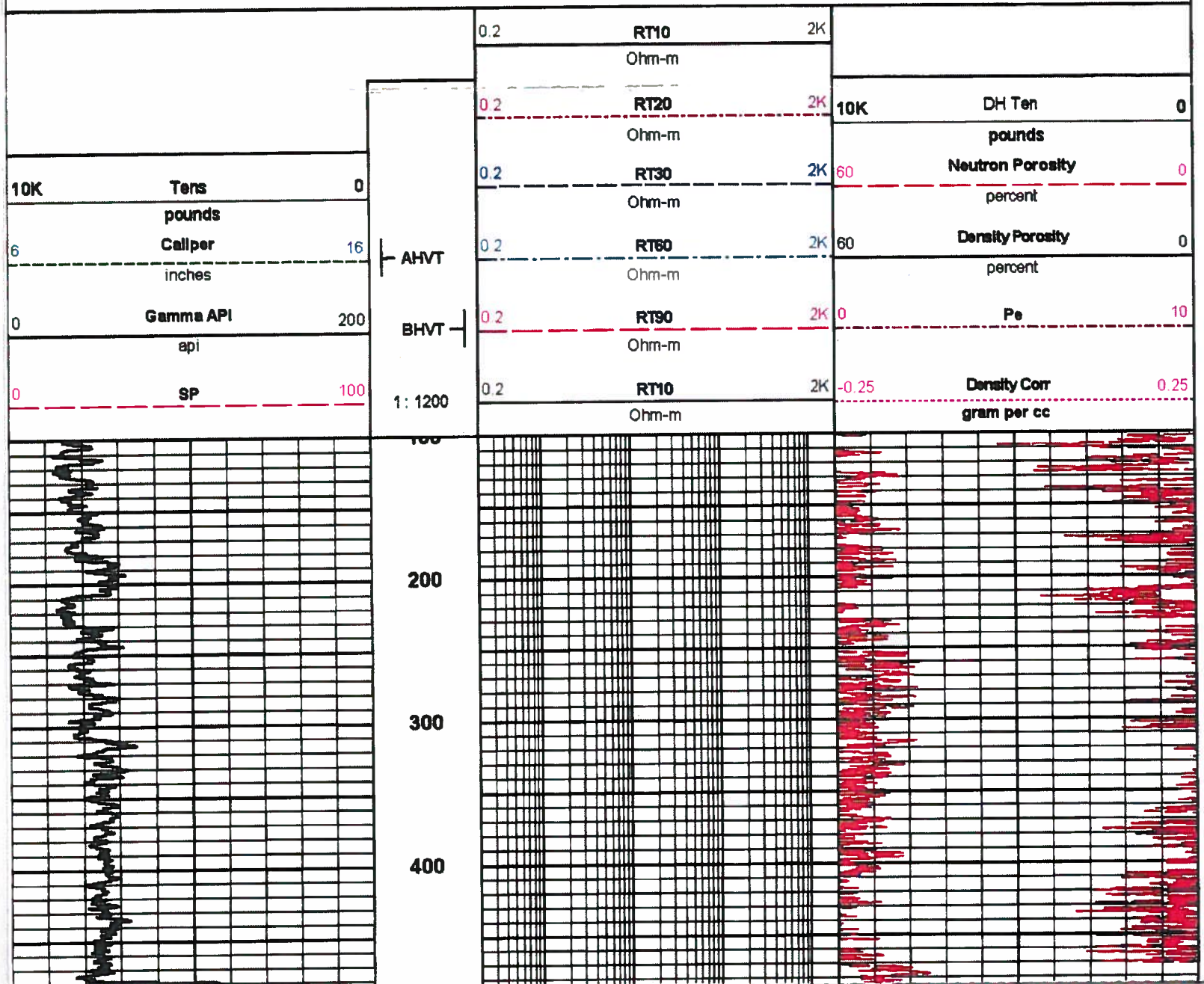
Service Ticket No.: 7564785		API Serial No.: 011075200110000		PGM Version: WL INSITE R3.0.5 (Build 3)			
CHANGE IN MUD TYPE OR ADDITIONAL SAMPLE				RESISTIVITY SCALE CHANGES			
Date	Sample No.	Type Log	Depth	Scale Up Hole	Scale Down Hole		
Depth-Driller							
Type Fluid In Hole							
Density	F. Viscosity						
Alkalinity	P. Viscosity						
HTHP @ Meas. Temp.							
Solids		Wgt. Mat.		RESISTIVITY EQUIPMENT DATA			
Oil	Water Ratio	Run No.	Tool Type & No.	Pad Type	Tool Pos.		
Water Phase Salinity		ONE	ACRT E486	N/A	1.5" S.O.		
Oil Type	Water Type						
Electrical Stability							
EQUIPMENT DATA							
GAMMA		ACOUSTIC		DENSITY			
Run No.	ONE	Run No.	ONE	Run No.	ONE		
Serial No.	11006602	Serial No.	11105782	Serial No.	10951314		
Model No.	GTET	Model No.	BSAT	Model No.	SDLT		
Diameter	3.625"	No. of Cent.	TWO	Diameter	4.5"		
Detector Model No.	102A	Spacing	N/A	Log Type	GAMMA/GAMMA		
Type	SCINT	LSA [Y/N]	YES	Source Type	Cs-137		
Length	8'	FWDA [Y/N]	NO	Serial No.	5253 GW		
Distance to Source	11'			Strength	1.5 CI		
LOGGING DATA							
GENERAL		GAMMA		ACOUSTIC			
Run	Depth	Scale	Scale	Matrix	Matrix		
No.	From To	L R	L R	L R	L R		
ONE	TD CSG	0 200	40% 0%	55.5 us/ft	40% 0%		

DIRECTIONAL INFORMATION

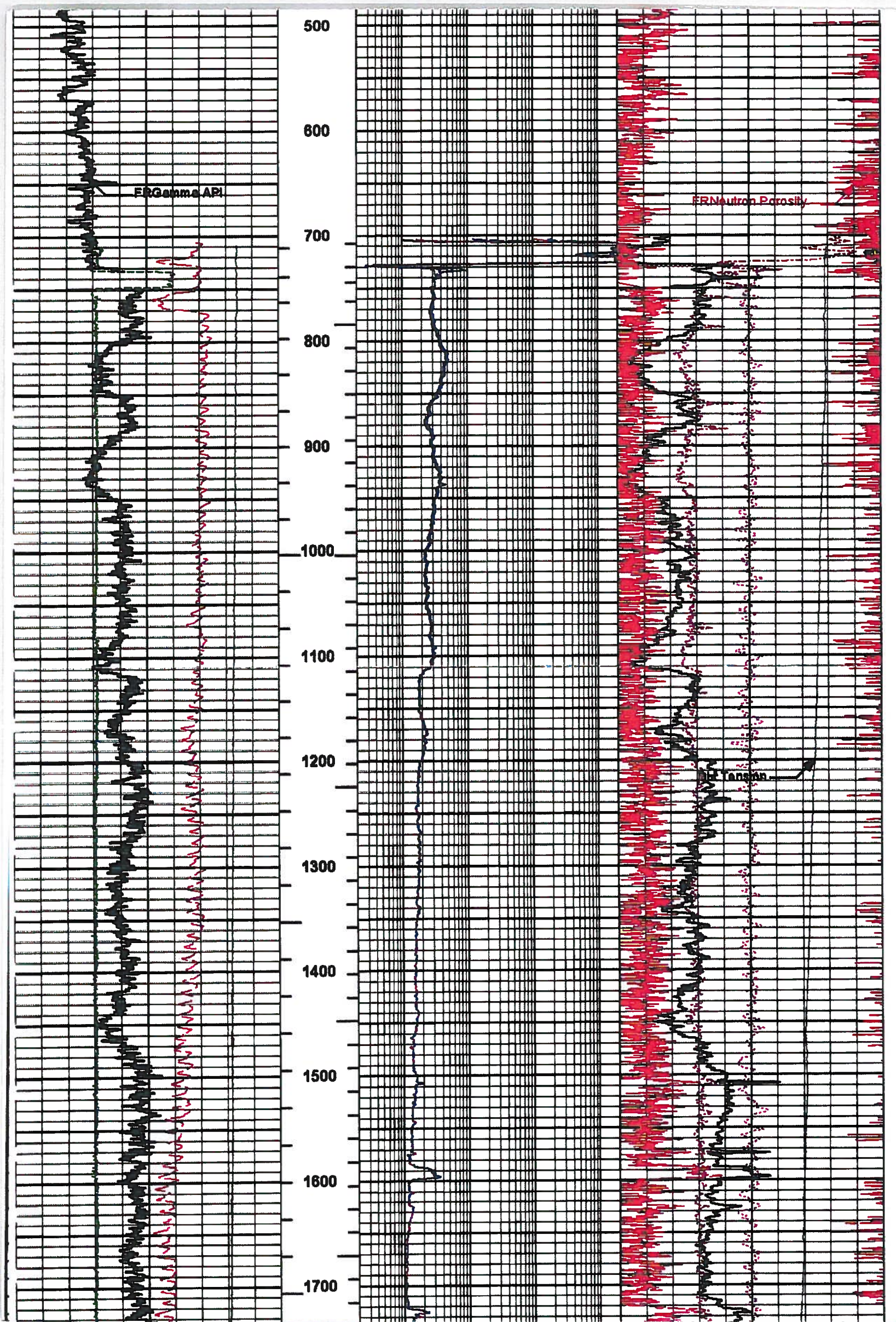
Maximum Deviation	@	KOP	@
Remarks:			
RUN ONE: GTET/DSN/SDL/FLEX/BSAT/ACRT			
RUN TWO: D4TGX/DCGS			
RUN THREE: D4TGX/IRMI			
TENSON PULLS MAY AFFECT LOG RESPONSE			
POROSITY SCALES CORRECTED.			
YOUR CREW TODAY: W. HALL, J. WIKERSON, T. VANALSTYNE.		RIG: RAZORBACK	
THANK YOU FOR CHOOSING HALLIBURTON ENERGY SERVICES - GRAND JUNCTION, CO - (970) 623-3600.			
<small>HALLIBURTON DOES NOT GUARANTEE THE ACCURACY OF ANY INTERPRETATION OF THE LOG DATA, CONVERSION OF LOG DATA TO PHYSICAL ROCK PARAMETERS OR RECOMMENDATIONS WHICH MAY BE GIVEN BY HALLIBURTON PERSONNEL OR WHICH APPEAR ON THE LOG OR IN ANY OTHER FORM. ANY USER OF SUCH DATA, INTERPRETATIONS, CONVERSIONS, OR RECOMMENDATIONS AGREES THAT HALLIBURTON IS NOT RESPONSIBLE EXCEPT WHERE DUE TO GROSS NEGLIGENCE OR WILLFUL MISCONDUCT, FOR ANY LOSS, DAMAGES, OR EXPENSES RESULTING FROM THE USE THEREOF.</small>			
HALLIBURTON			

**HALLIBURTON** Plot Time: 17-Aug-10 16:30:57  
 Plot Range: 100 ft to 2822.36 ft  
 Data: BIRDG\_TRACY\_3\_2Well Based\*1\*  
 Plot File: \1ONE\_INCHBP\_6IN\_COMP\_M

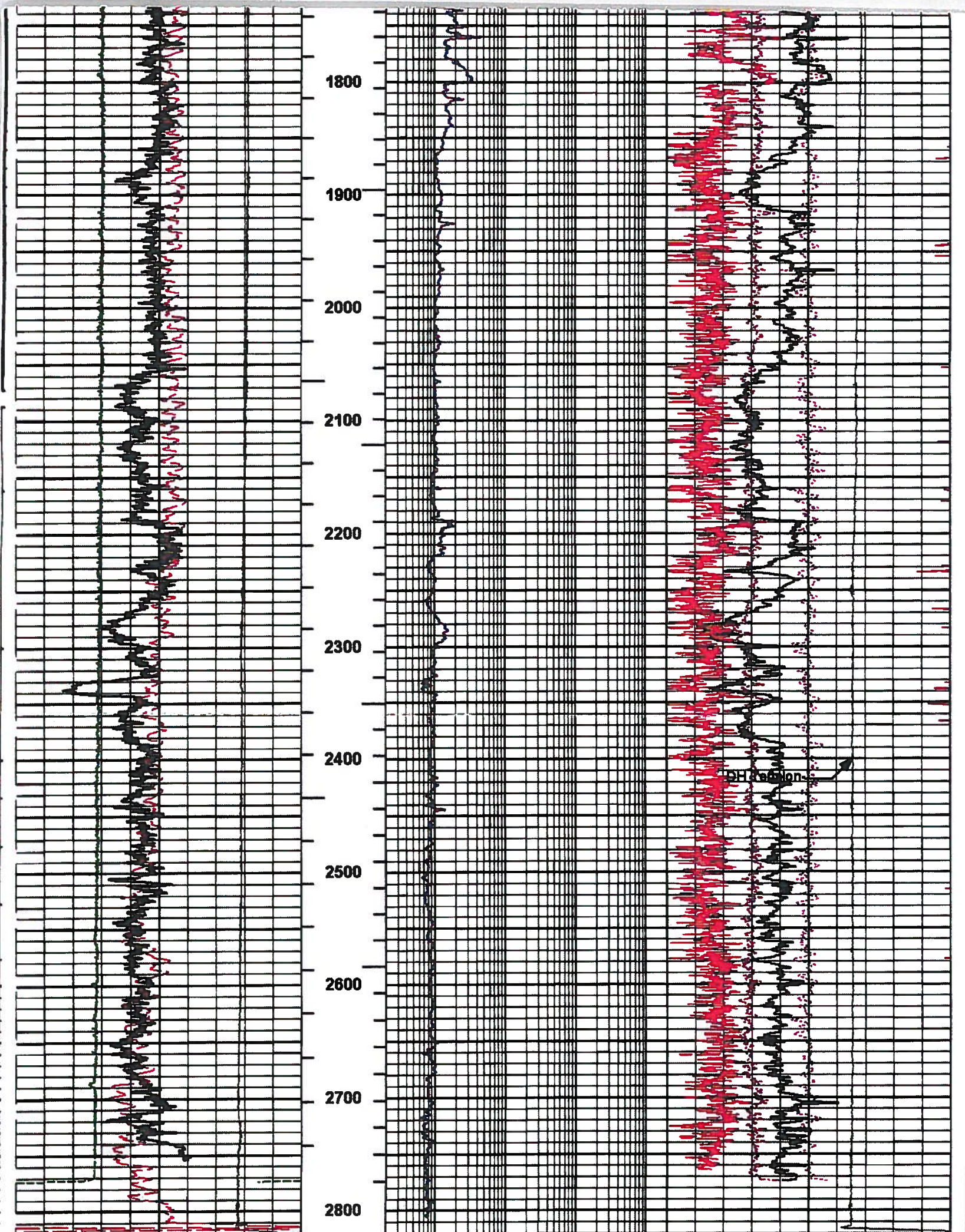
MAIN PASS 1" = 100'











0	SP	100	1: 1200	0.2	RT10	2K	-0.25	Density Corr	0.25
					Ohm-m			gram per cc	
0	Gamma API	200	BHVT	0.2	RT90	2K	0	Pe	10
	epi				Ohm-m				
6	Caliper	16	AHVT	0.2	RT60	2K	60	Density Porosity	0
	inches				Ohm-m			percent	
								Neutron Porosity	

0.2	RT30	2K	10K	percent
	Ohm-m			
0.2	RT20	2K	10K	DH Ten
	Ohm-m			pounds
0.2	RT10	2K		
	Ohm-m			

**HALLIBURTON** Plot Time: 17-Aug-10 16:31:04  
 Plot Range: 100 ft to 2822.35 ft  
 Data: BIRDG\_TRACY\_3\_2Well Based.r\*  
 Plot File: #ONE\_INCHBP\_5IN\_COMP\_M

MAIN PASS 1" = 100'

COMPANY BRIDGE/PARAMAX  
 WELL TRACY TRUST #3-2  
 FIELD HAMILTON  
 COUNTY PAYETTE STATE ID

**HALLIBURTON** SPECTRAL DENSITY  
 DUAL SPACED NEUTRON  
 ARRAY COMPENSATED  
 TRUE RESISTIVITY