

HALLIBURTON

**SPECTRAL DENSITY
DUAL SPACED NEUTRON
ARRAY COMPENSATED
TRUE RESISTIVITY
*FIELD PRINT***

COMPANY **BRIDGE/PARAMAX**
WELL **TRACY TRUST #3-2**
FIELD **HAMILTON**
COUNTY **PAYETTE**
STATE **ID**

COMPANY **BRIDGE/PARAMAX**
WELL **TRACY TRUST #3-2**
FIELD **HAMILTON**
COUNTY **PAYETTE**
STATE **ID**

API No. **011075200110000**
Location
Sect. **N/A** Twp. **N/A** Rge. **N/A**
Elev. 0.0 ft
Log measured from **above perm. Datum**
Drilling measured from **KB**

Permanent Datum **GL** Elev. **0.0 ft**
Log measured from **KB** D.F. **0.0 ft**
Drilling measured from **KB** G.L. **0.0 ft**

Date **ONE**

Depth - Driller	
Depth - Logger	
Bottom - Logger Interval	
Top - Logger Interval	
Casing - Diameter	
Casing - Logger	
Bit Size	
Type Fluid - Hole	
Density	
PH	
Viscosity	
Fluid Loss	
Source of Sample	
Rm @ Meas. Temperature	
Rmf @ Meas. Temperature	
Rmc @ Meas. Temperature	
Source Rmf	
Rm @ BHT	
Rmf @ BHT	
Rmc @ BHT	
Time Since Circulation	
Time on Bottom	
Max. Rec. Temperature	
Equipment Location	
Recorded By	
Witnessed By	

PGM Version: WL INSITE R3.0.5 (Build 3)

API Serial No.: 011075200110000

Service Ticket No.: N/A

CHANGE IN MUD TYPE OR ADDITIONAL SAMPLE				RESISTIVITY SCALE CHANGES				
Date	Sample No.			Type Log	Depth	Scale Up Hole	Scale Down Hole	
Depth-Driller								
Type Fluid in Hole								
Density	Viscosity							
Ph	Fluid Loss							
Source of Sample								
RESISTIVITY EQUIPMENT DATA				Run No.	Tool Type & No.	Pad Type	Tool Pos.	Other
Rm @ Meas. Temp		@	@					
Rmf @ Meas. Temp.		@	@					
Rmc @ Meas. Temp.		@	@					
Source Rmf	Rmc							
Rm @ BHT		@	@					
Rmf @ BHT		@	@					
Rmc @ BHT		@	@					

EQUIPMENT DATA

GAMMA		ACOUSTIC		DENSITY		NEUTRON	
Run No.		Run No.		Run No.		Run No.	
Serial No.		Serial No.		Serial No.		Serial No.	
Model No.		Model No.		Model No.		Model No.	
Diameter		No. of Cent.		Diameter		Diameter	
Detector Model No.		Spacing		Log Type		Log Type	
Type				Source Type		Source Type	
Length		LSA [Y/N]		Serial No.		Serial No.	
Distance to Source		FWDA [Y/N]		Strength		Strength	

LOGGING DATA

GENERAL	GAMMA	ACOUSTIC	DENSITY	NEUTRON
---------	-------	----------	---------	---------

Run	Depth		Speed	Scale		Scale		Matrix	Scale		Matrix	Scale		Matrix
	No.	From	To	ft/min	L	R	L		R	L		R	L	
ONE	TD	CSG	REC	0	200	40%	0%	55.5 us/ft	40%	0%	2.71 g/cc	40%	0%	SAND

CONFIDENTIAL

DIRECTIONAL INFORMATION

Maximum Deviation	@	KOP	@
-------------------	---	-----	---

Remarks:

RWCH-GTET-DSNT-SDLT -ACRT WERE RUN IN COMBINATION.

HOLE RUGOSITY AND TENSION PULLS MAY AFFECT LOG QUALITY.

THANK YOU FOR CHOOSING HALLIBURTON ENERGY SERVICES - GRAND JUNCTION, CO - (970) 523-3600.

HALLIBURTON DOES NOT GUARANTEE THE ACCURACY OF ANY INTERPRETATION OF THE LOG DATA, CONVERSION OF LOG DATA TO PHYSICAL ROCK PARAMETERS OR RECOMMENDATIONS WHICH MAY BE GIVEN BY HALLIBURTON PERSONNEL OR WHICH APPEAR ON THE LOG OR IN ANY OTHER FORM. ANY USER OF SUCH DATA, INTERPRETATIONS, CONVERSIONS, OR RECOMMENDATIONS AGREES THAT HALLIBURTON IS NOT RESPONSIBLE EXCEPT WHERE DUE TO GROSS NEGLIGENCE OR WILLFUL MISCONDUCT, FOR ANY LOSS, DAMAGES, OR EXPENSES RESULTING FROM THE USE THEREOF.

HALLIBURTON

HALLIBURTON

PARAMETERS REPORT

Depth (ft)	Tool Name	Mnemonic	Description	Value	Units
TOP					
	SHARED	BS	Bit Size	8.750	in
	SHARED	UBS	Use Bit Size instead of Caliper for all applications.	No	
	SHARED	MDWT	Borehole Fluid Weight	10.100	ppg
	SHARED	OBM	Oil Based Mud System?	Yes	
	SHARED	CSD	Logging Interval is Cased?	No	
	SHARED	ICOD	AHV Casing OD	5.500	in
	SHARED	ST	Surface Temperature	75.0	degF
	SHARED	TD	Total Well Depth	2810.00	ft
	SHARED	BHT	Bottom Hole Temperature	200.0	degF
	SHARED	SVTM	Navigation and Survey Master Tool	NONE	
	SHARED	AZTM	High Res Z Accelerometer Master Tool	GTET	
	SHARED	TEMM	Temperature Master Tool	NONE	
	SHARED	BHSM	Borehole Size Master Tool	NONE	
	Rwa / CrossPlot	XPOK	Process Crossplot?	Yes	
	Rwa / CrossPlot	FCHO	Select Source of F	Automatic	
	Rwa / CrossPlot	AFAC	Archie A factor	0.6200	
	Rwa / CrossPlot	MFAC	Archie M factor	2.1500	
	Rwa / CrossPlot	RMFR	Rmf Reference	0.10	ohmm
	Rwa / CrossPlot	TMFR	Rmf Ref Temp	75.00	degF
	Rwa / CrossPlot	RWA	Resistivity of Formation Water	0.05	ohmm

CONFIDENTIAL

Rwa / CrossPlot	ADP	Use Air Porosity to calculate CrossplotPhi	No	
GTET	GROK	Process Gamma Ray?	Yes	
GTET	GRSO	Gamma Tool Standoff	0.000	in
GTET	GEOK	Process Gamma Ray EVR?	No	
GTET	POTA	Potassium	0.00	%
GTET	MDTP	Mud Type	Natural	
GTET	TPOS	Tool Position	Standoff	
DSNT	DNOK	Process DSN?	Yes	
DSNT	DEOK	Process DSN EVR?	No	
DSNT	NLIT	Neutron Lithology	Sandstone	
DSNT	DNSO	DSN Standoff - 0.25 in (6.35 mm) Recommended	0.000	in
DSNT	DNTP	Temperature Correction Type	None	
DSNT	DPRS	DSN Pressure Correction Type	None	
DSNT	SHCO	View More Correction Options	No	
DSNT	UTVD	Use TVD for Gradient Corrections?	No	
DSNT	LHWT	Logging Horizontal Water Tank?	No	
SDLT	DNOK	Process Density?	Yes	
SDLT	DNOK	Process Density EVR?	No	
SDLT	AD	Is Hole Air Drilled?	No	
SDLT	CB	Logging Calibration Blocks?	No	
SDLT	SPVT	SDLT Pad Temperature Valid?	Yes	
SDLT	DTWN	Disable temperature warning	No	
SDLT	MDTP	Weighted Mud Correction Type?	Barite	
SDLT	DMA	Formation Density Matrix	2.650	g/cc
SDLT	DFL	Formation Density Fluid	1.000	g/cc
SDLT	CLOK	Process Caliper Outputs?	Yes	
SDLT	MLOK	Process MicroLog Outputs?	Yes	
BSAT	MBOK	Compute BCAS Results?	Yes	
BSAT	FLLO	Semblance Filter Low Pass Value?	5000	Hz
BSAT	FLHI	Semblance Filter High Pass Value?	27000	Hz
BSAT	DTFL	Delta -T Fluid	189.00	uspf
BSAT	DTMT	Delta -T Matrix Type	Sandstone 55.5	
BSAT	DTSH	Delta -T Shale	100.00	uspf
BSAT	SPEQ	Acoustic Porosity Equation	Wylie	
ACRt	RTOK	Process ACRt?	Yes	
ACRt	MNSO	Minimum Tool Standoff	1.50	in
ACRt	TCS1	Temperature Correction Source	FP Lwr & FP Upr	
ACRt	TPOS	Tool Position	Free Hanging	
ACRt	RMOP	Rmud Source	Mud Cell	
ACRt	RMIN	Minimum Resistivity for MAP	0.20	ohmm
ACRt	RMIN	Maximum Resistivity for MAP	200.00	ohmm
ACRt	THQY	Threshold Quality	0.50	

BOTTOM

Data: BIRDG_TRACY_3_2\0001 QUAD-BSAT\005 14-Aug-10 09:06 Up @2820.5f

Date: 14-Aug-10 09:42:52

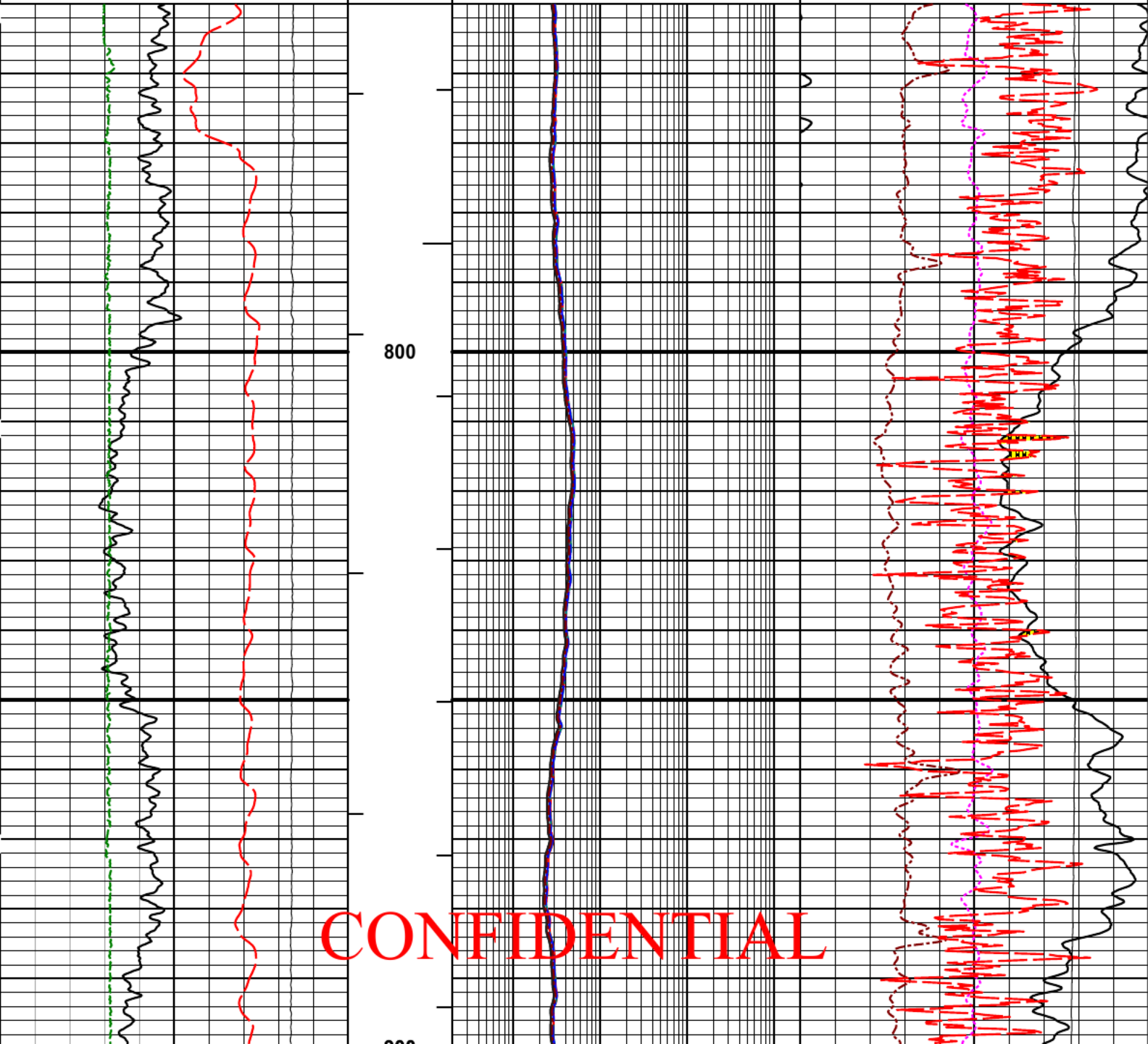
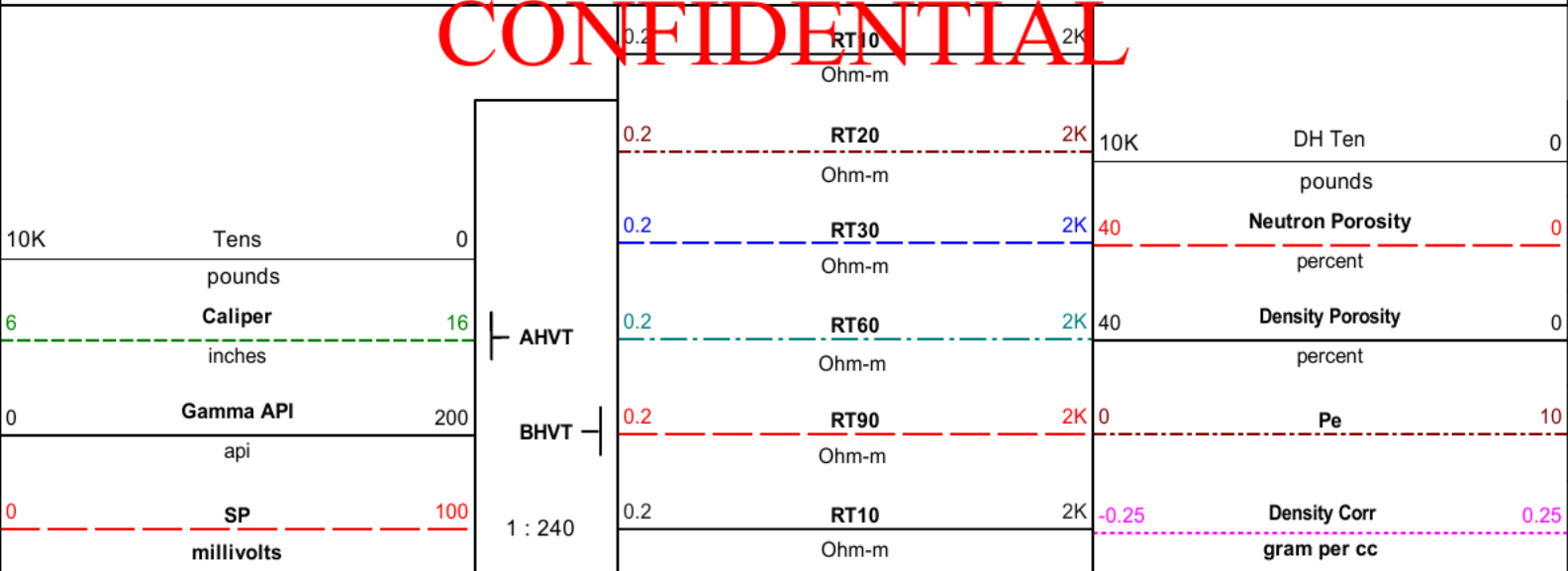
HALLIBURTON

Plot Time: 14-Aug-10 09:53:54
 Plot Range: 750 ft to 2822.36 ft
 Data: BIRDG_TRACY_3_2\Well Based\MAIN*
 Plot File: \\COMP_FIELD\BP_5IN_COMP_M

CONFIDENTIAL

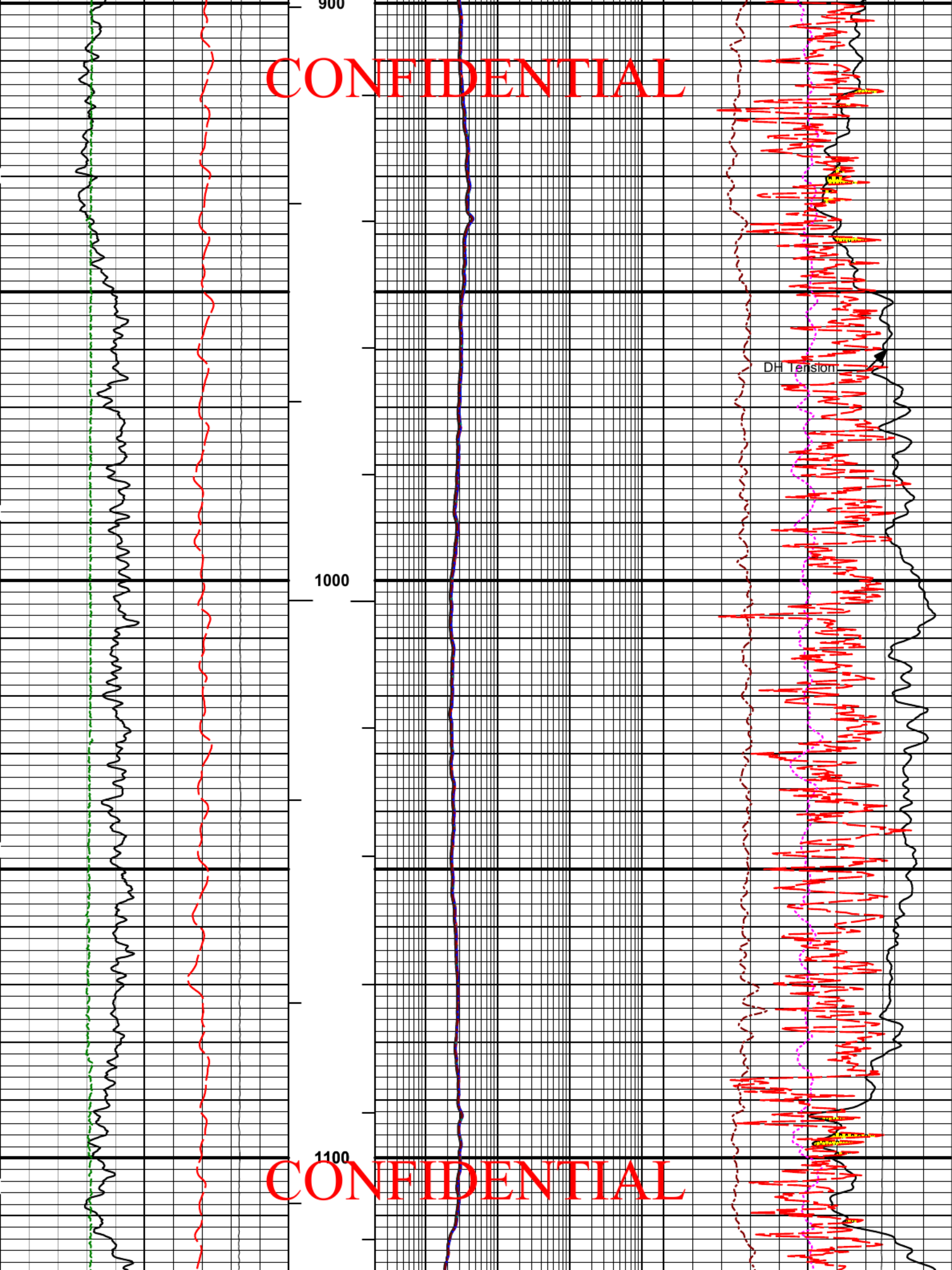
MAIN PASS 5" = 100'

CONFIDENTIAL



CONFIDENTIAL

CONFIDENTIAL

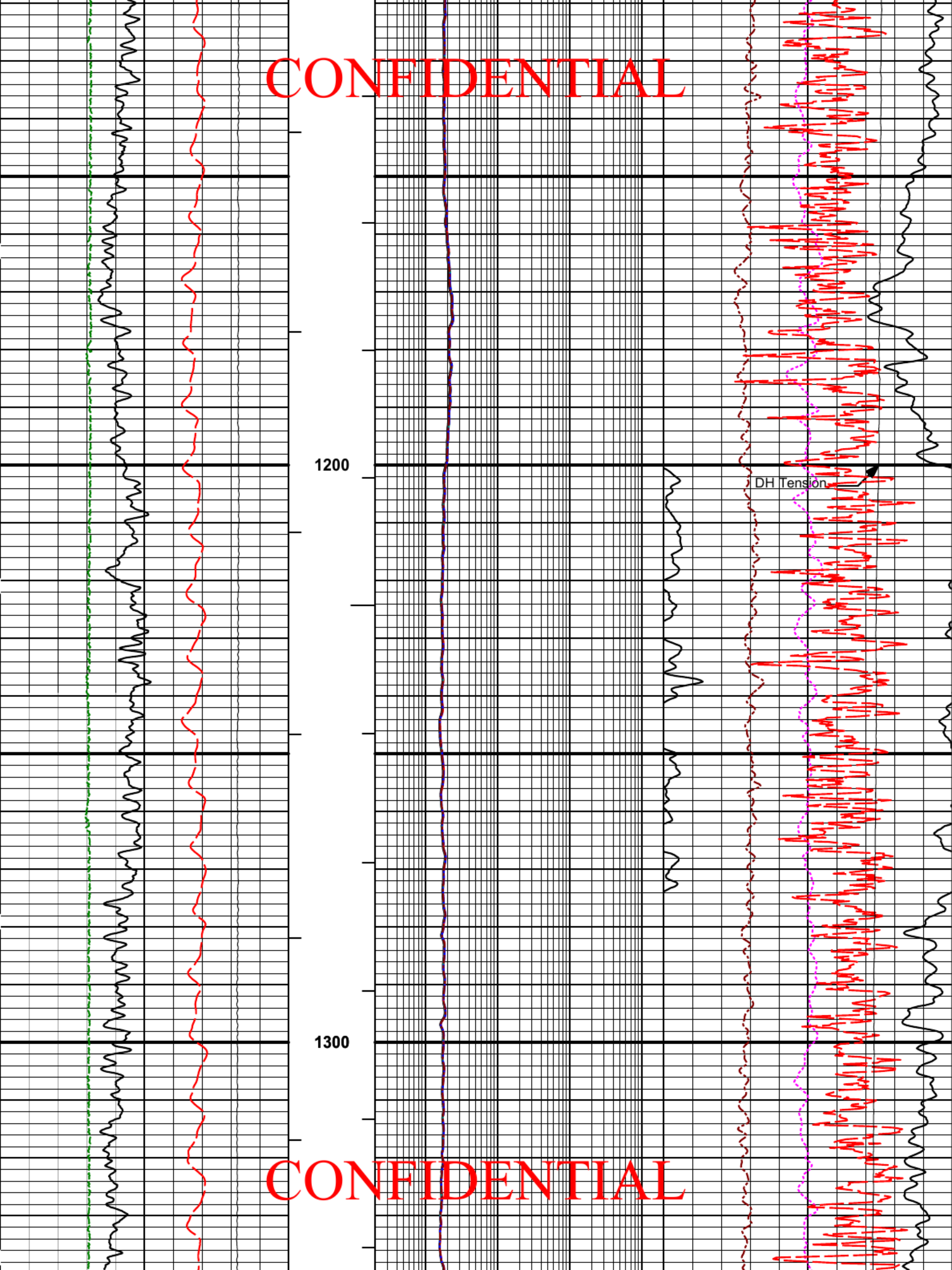


1000

1100

CONFIDENTIAL

CONFIDENTIAL



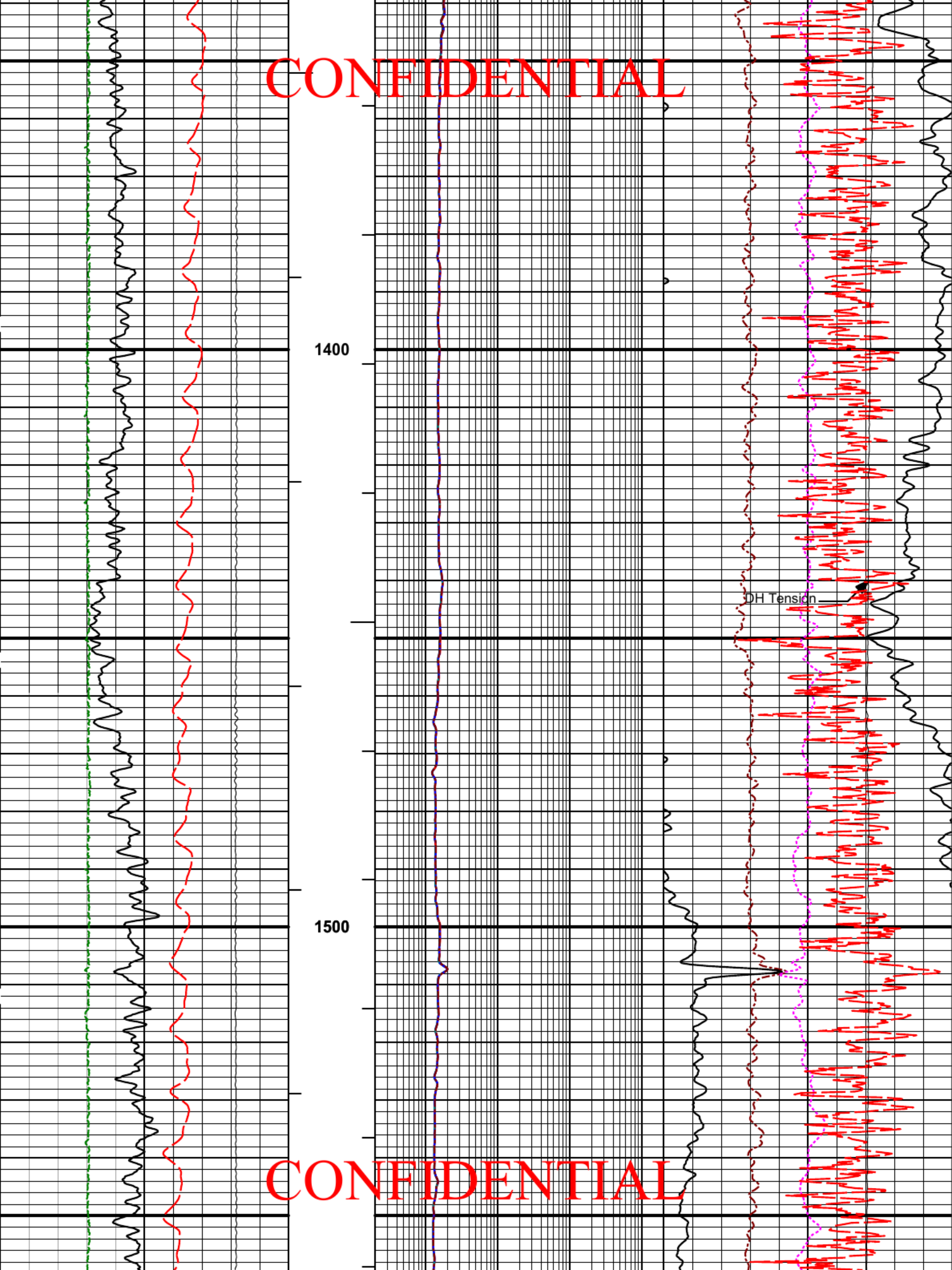
1200

DH Tension

1300

CONFIDENTIAL

CONFIDENTIAL



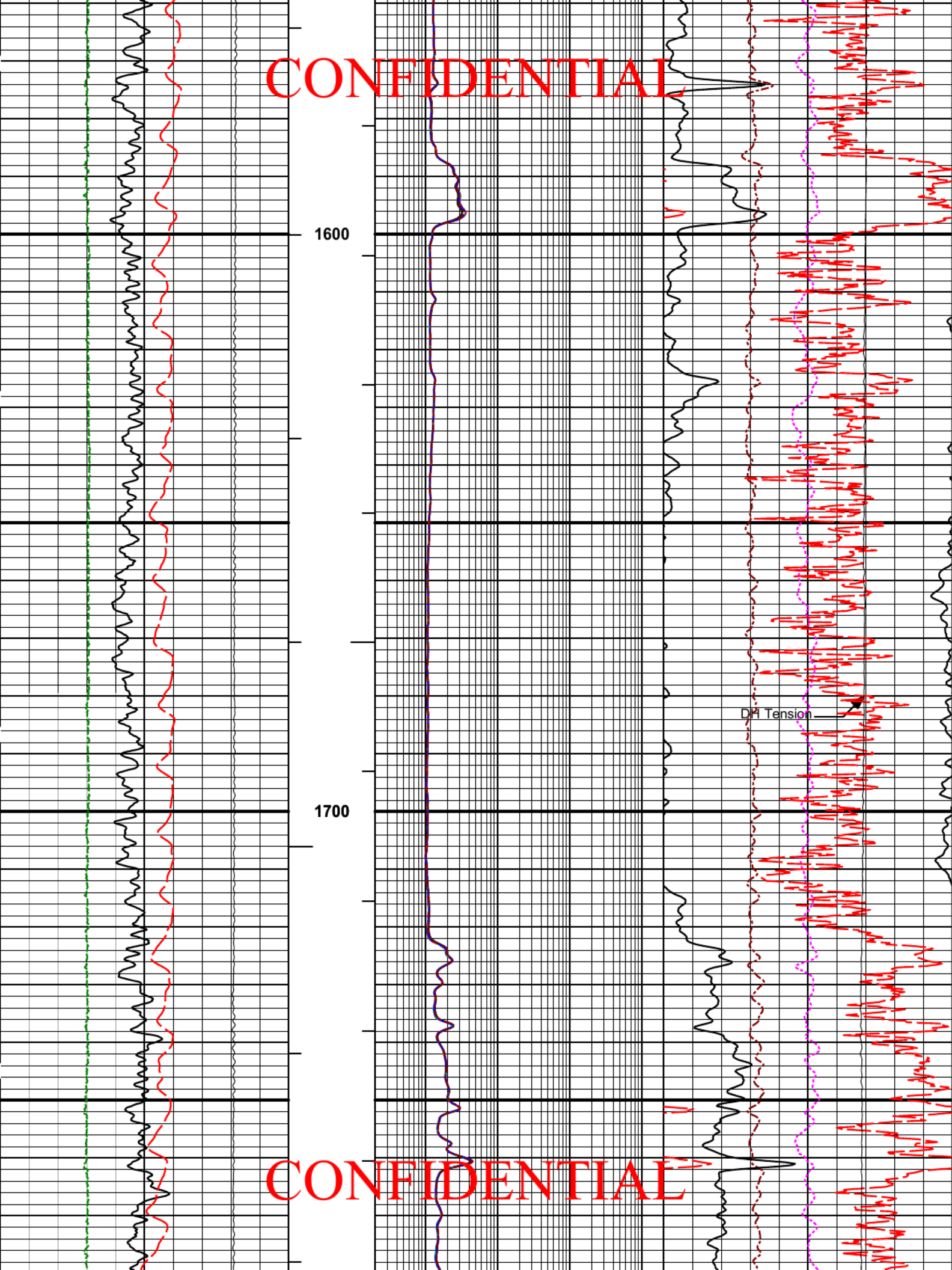
1400

1500

DH Tension

CONFIDENTIAL

CONFIDENTIAL



1600

1700

DP Tension

CONFIDENTIAL

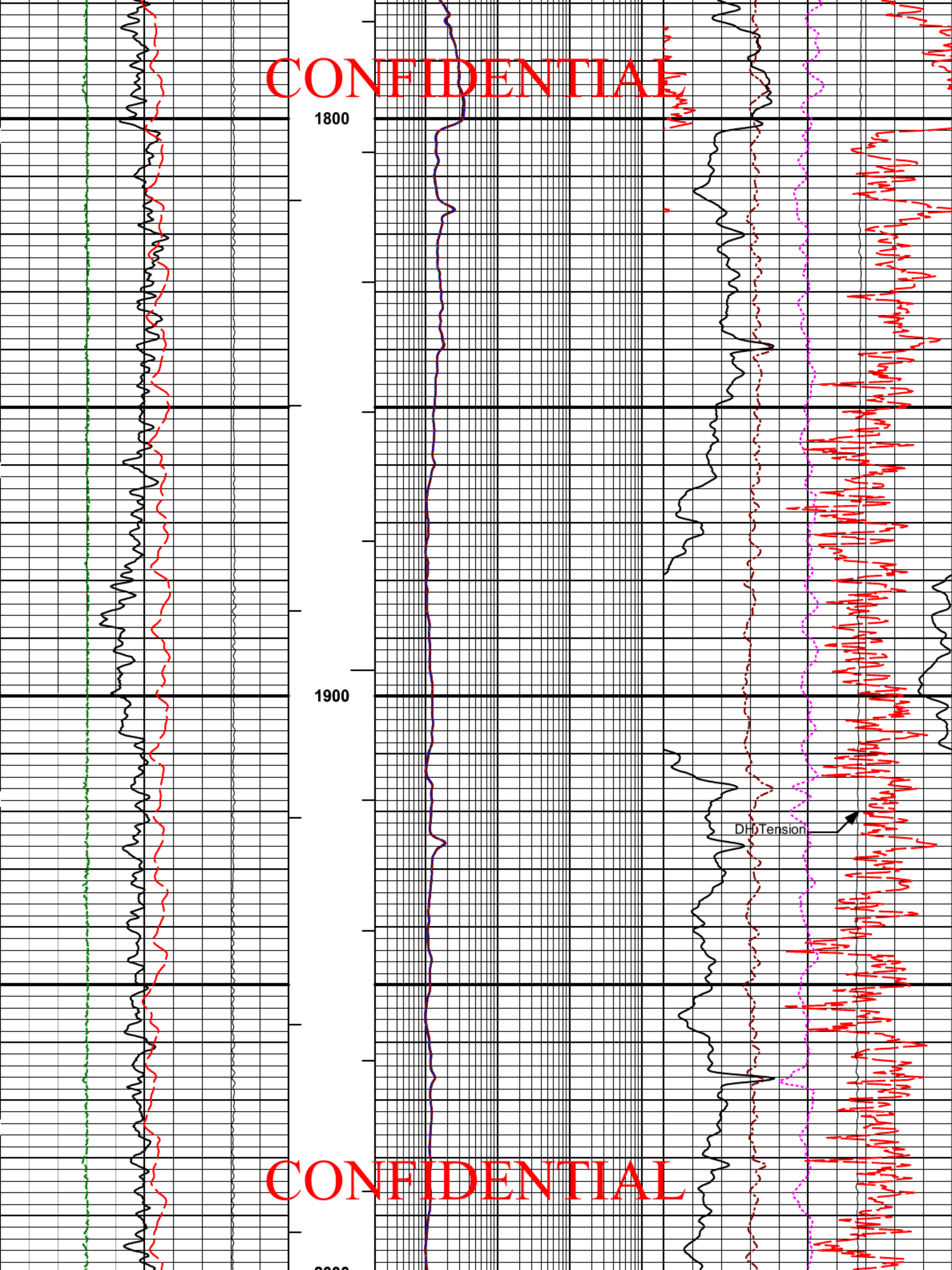
CONFIDENTIAL

1800

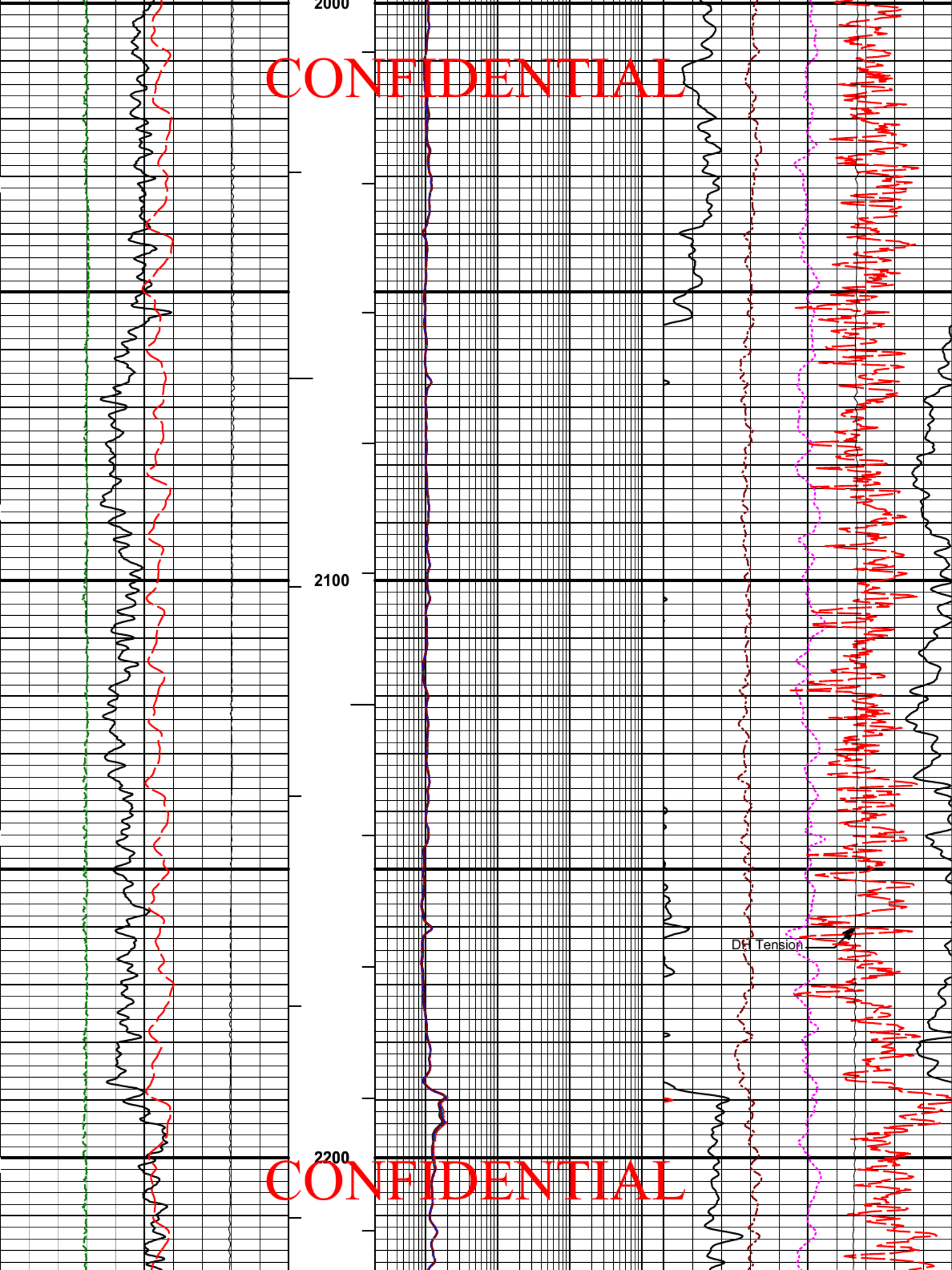
1900

2000

CONFIDENTIAL



CONFIDENTIAL



2000

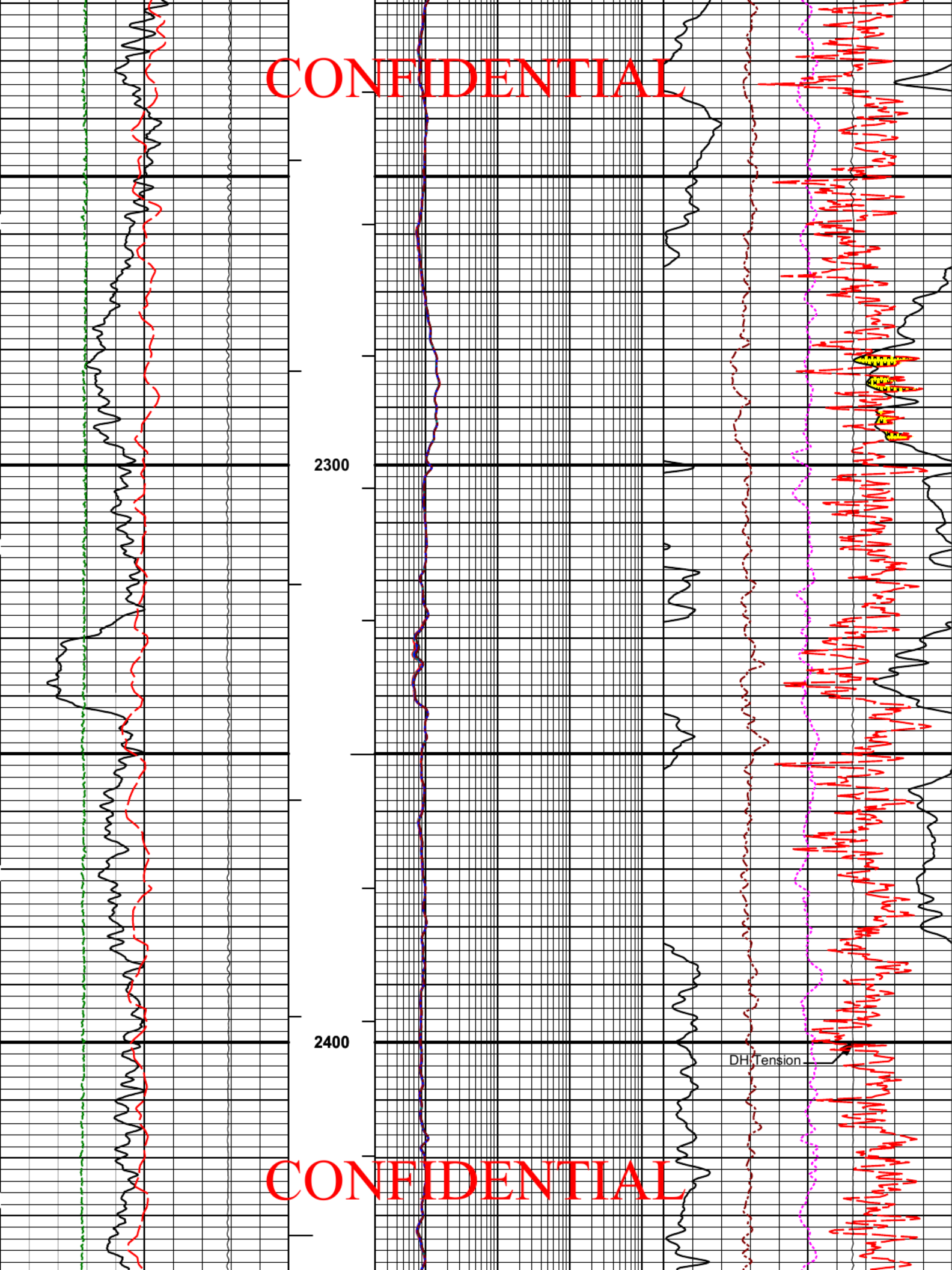
2100

2200

CONFIDENTIAL

DH Tension

CONFIDENTIAL



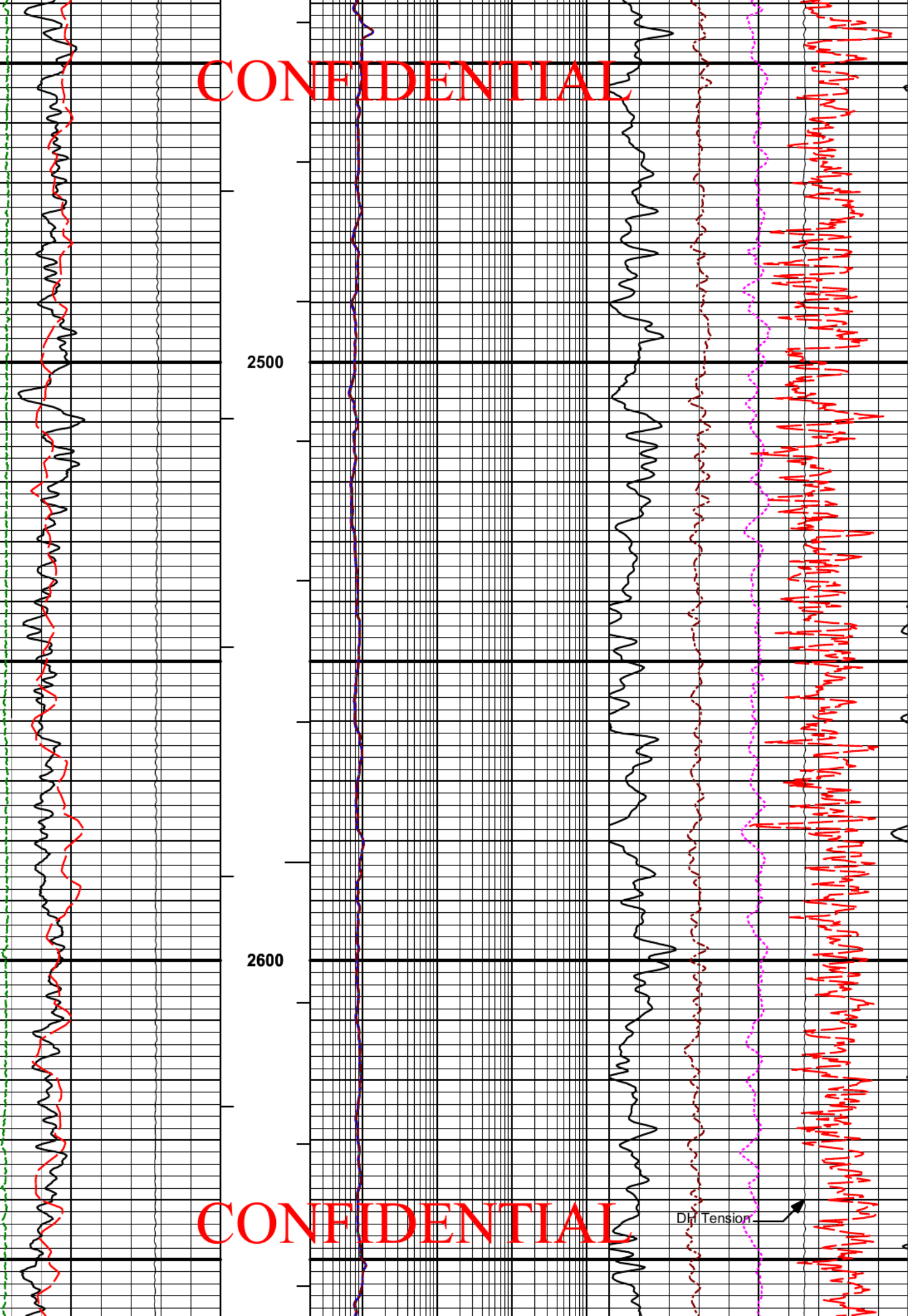
2300

2400

DH Tension

CONFIDENTIAL

CONFIDENTIAL



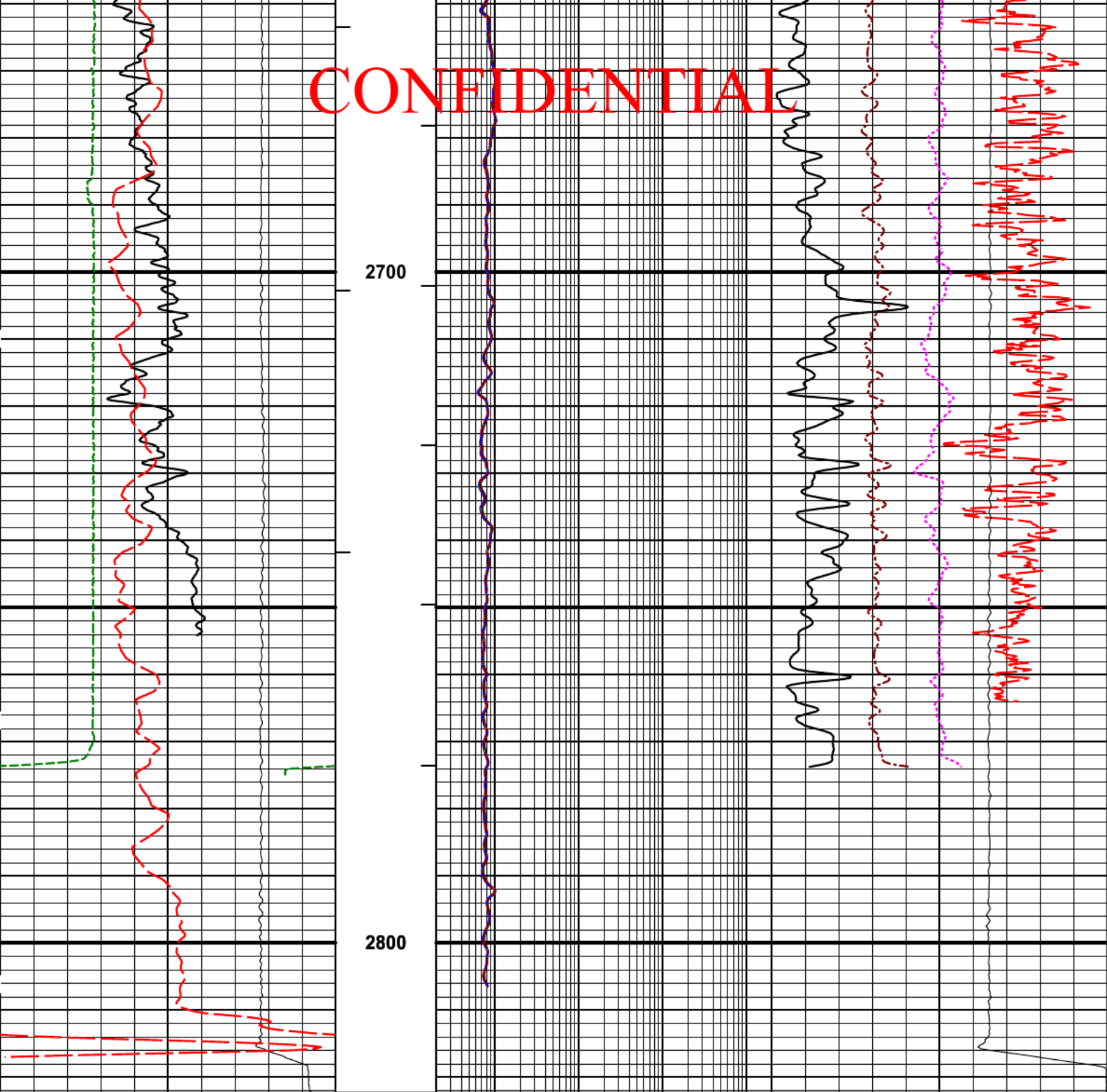
2500

2600

CONFIDENTIAL

Dip Tension

CONFIDENTIAL



0	SP	100	1 : 240	0.2	RT10	2K	-0.25	Density Corr	0.25
	millivolts				Ohm-m			gram per cc	
0	Gamma API	200	BHVT	0.2	RT90	2K	0	Pe	10
	api				Ohm-m				
6	Caliper	16	AHVT	0.2	RT60	2K	40	Density Porosity	0
	inches				Ohm-m			percent	
10K	Tens	0		0.2	RT30	2K	40	Neutron Porosity	0
	pounds				Ohm-m			percent	
				0.2	RT20	2K	10K	DH Ten	0
					Ohm-m			pounds	
				0.2	RT10	2K			
					Ohm-m				

CONFIDENTIAL

HALLIBURTON

Plot Time: 14-Aug-10 09:53:59
Plot Range: 750 ft to 2822.36 ft
Data: BIRDG_TRACY_3_2Well Based\AANI*
Plot File: \\COMP_FIELD\BP_5IN_COMP_M

CONFIDENTIAL

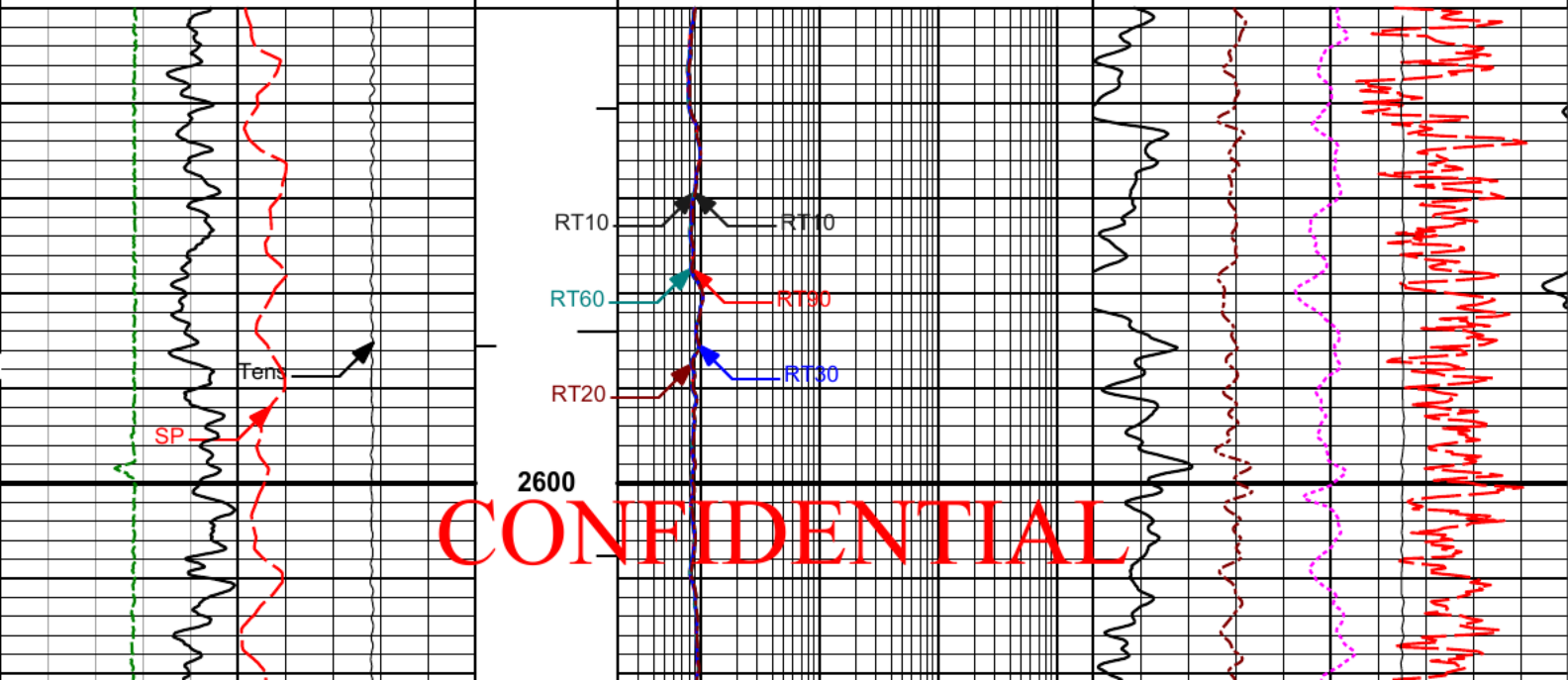
MAIN PASS 5" = 100'

HALLIBURTON

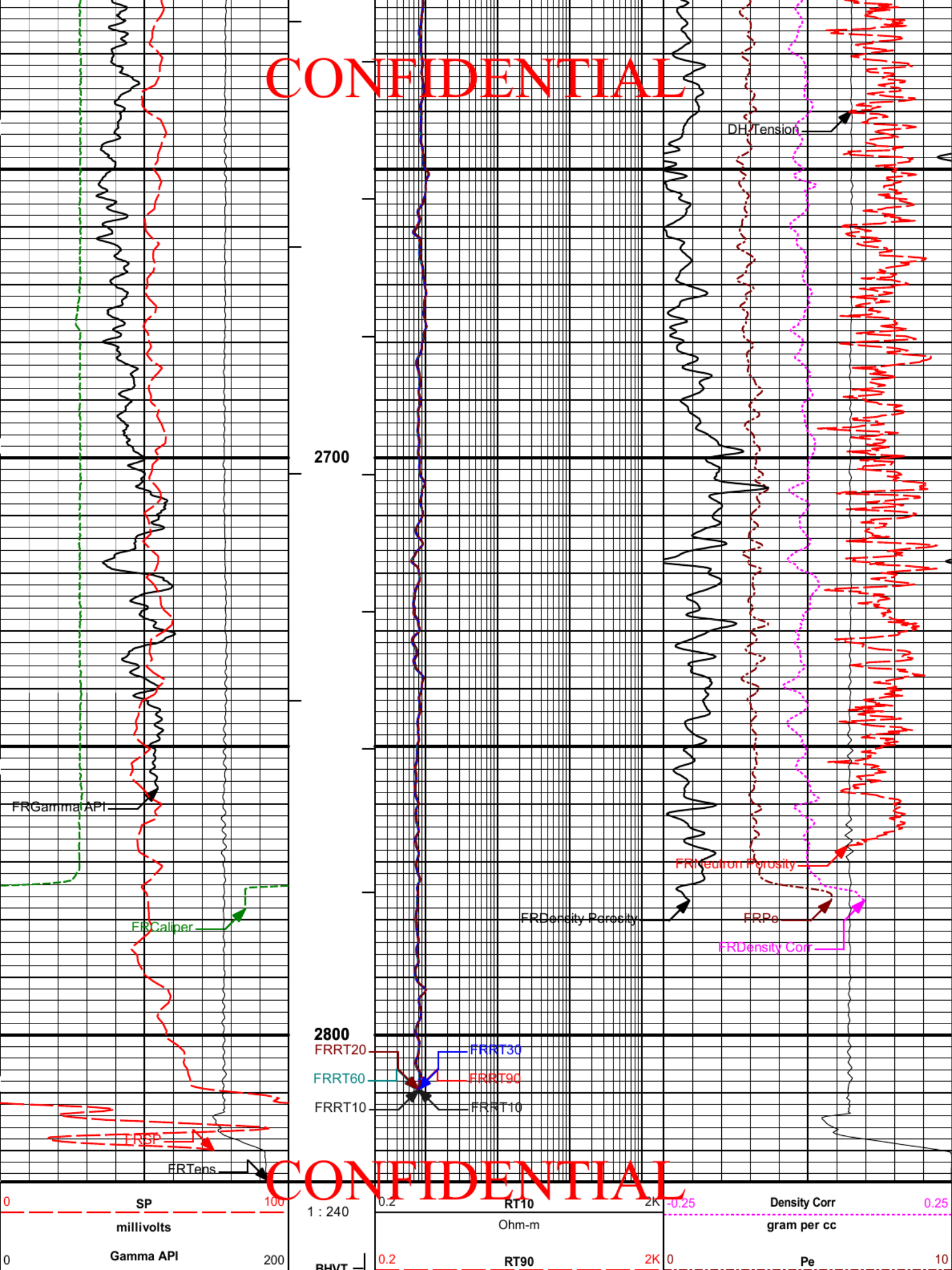
Plot Time: 14-Aug-10 09:53:59
Plot Range: 2550 ft to 2825.34 ft
Data: BIRDG_TRACY_3_2Well Based\REPEAT*
Plot File: \\COMP_FIELD\BP_5IN_COMP_M

REPEAT SECTION 5" = 100'

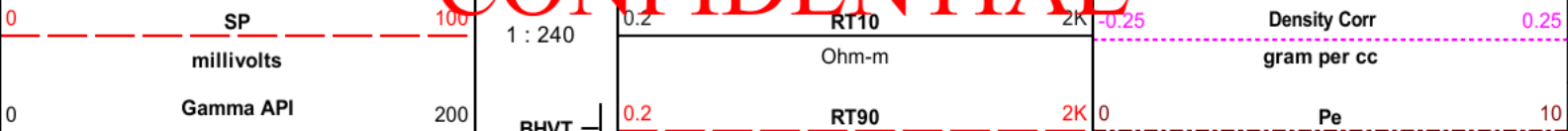
10K	Tens	0	0.2	RT10	2K	10K	DH Ten	0
	pounds			Ohm-m			pounds	
6	Caliper	16	0.2	RT20	2K	40	Neutron Porosity	0
	inches			Ohm-m			percent	
0	Gamma API	200	0.2	RT30	2K	40	Density Porosity	0
	api			Ohm-m			percent	
0	SP	100	0.2	RT60	2K	0	Pe	10
	millivolts			Ohm-m			Density Corr	0.25
				Ohm-m			gram per cc	



CONFIDENTIAL



CONFIDENTIAL



6	api		Ohm-m			
	Caliper	16	0.2	RT60	2K	40
	inches			Ohm-m		
10K	Tens	0	0.2	RT30	2K	40
	pounds			Ohm-m		
			0.2	RT20	2K	10K
				Ohm-m		
			0.2	RT10	2K	
				Ohm-m		

CONFIDENTIAL

HALLIBURTON Plot Time: 14-Aug-10 09:54:01
 Plot Range: 2550 ft to 2825.34 ft
 Data: BIRDG_TRACY_3_2\Well Based\REPEAT\
 Plot File: \\COMP_FIELD\BP_5IN_COMP_M

REPEAT SECTION 5" = 100'

COMPANY	BRIDGE/PARAMAX		
WELL	TRACY TRUST #3-2		
FIELD	HAMILTON		
COUNTY	PAYETTE	STATE	ID

HALLIBURTON	SPECTRAL DENSITY DUAL SPACED NEUTRON ARRAY COMPENSATED TRUE RESISTIVITY *FIELD PRINT*
--------------------	---

CONFIDENTIAL