

**Cement Bond Log**  
Gamma Ray  
CCL

Company: Bridge Energy Inc.  
Well: Island Capitol 1-19  
Field: Payette Wildcat

County: Payette  
State: ID  
Location: Surface Hole Location  
SEC 19 TWP 9N R3E 3W  
Permanent Datum: K.B. 12 above G.L.  
Log Measured From: K.B.  
Elevation: 2373  
Emission: K.B. 2385  
C.L. 2384  
G.L. 2375

Run Number: 8  
Run From: 0  
Run To: 10  
Size: 1 1/2  
VdL: 1200  
Gamma Ray: 125  
CCL: -1  
TT3 (usec): 100

Equipment Number: 8837  
Recorded By: E. B. H. H. H.  
Witnessed By: E. B. H. H. H.  
Time Logged on Bottom: 7:30 PM  
Time Logged on Top: 7:30 PM  
Max. Recorded Temp.: 78.069 F  
Time Fluid Size: N/A  
Density / Viscosity: N/A

All interpretations are opinions based on inferences from electrical or other measurements and we cannot and do not guarantee the accuracy or correctness of any interpretation, and we shall not, except in the case of gross or willful negligence on our part, be liable or responsible for any loss, costs, damages, or expenses incurred or sustained by anyone resulting from any interpretation made by any of our officers, agents or employees. These interpretations are also subject to our general terms and conditions set out in our current Price Schedule.

Comments

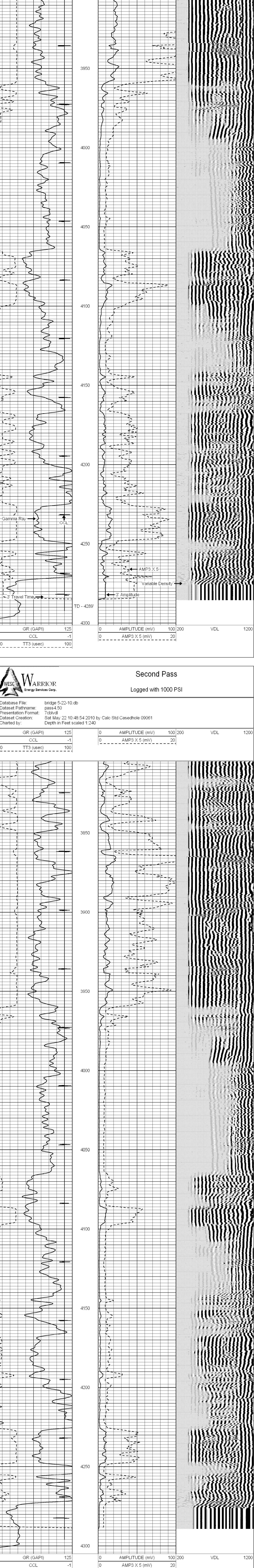
Thank you for choosing Black Warrior Wireline.

## Main Pass

Database File: bridge 5-21-10.db  
Dataset Pathname: pass57.3  
Presentation Format: 7cbvdl  
Dataset Creation: Fri May 21 21:31:44 2010 by Calc Std Casedhole 09061  
Charted by:

0 GR (GAPI) 125  
9 CCL -1  
300 TT3 (usec) 100

0 AMPLITUDE (mV) 100 200 VDL 1200  
0 AMP3 X 5 (mV) 20



0 GR (GAPI) 125  
9 CCL -1  
300 TT3 (usec) 100

0 AMPLITUDE (mV) 100 200 VDL 1200  
0 AMP3 X 5 (mV) 20

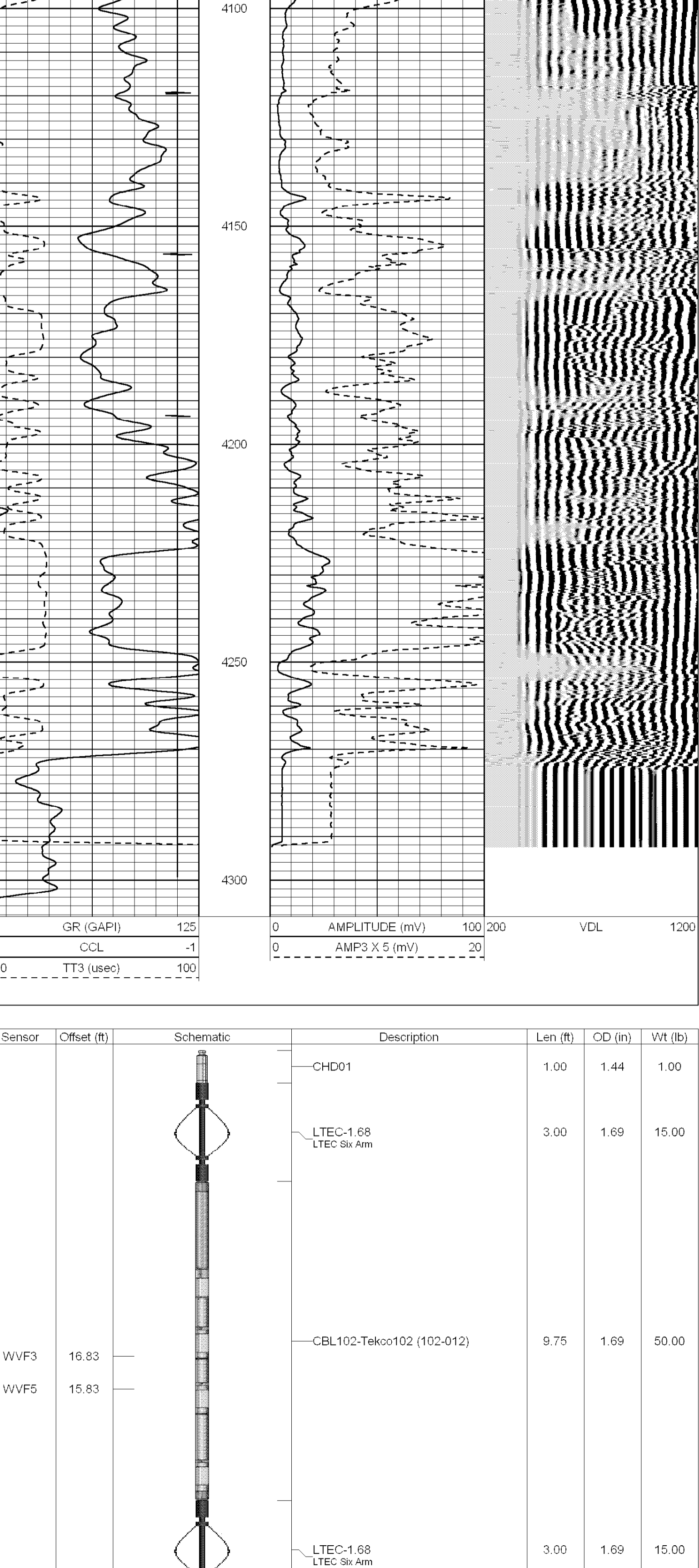
## Second Pass

Logged with 1000 PSI

Database File: bridge 5-22-10.db  
Dataset Pathname: pass4.50  
Presentation Format: 7cbvdl  
Dataset Creation: Sat May 22 10:48:54 2010 by Calc Std Casedhole 09061  
Charted by:

0 GR (GAPI) 125  
9 CCL -1  
300 TT3 (usec) 100

0 AMPLITUDE (mV) 100 200 VDL 1200  
0 AMP3 X 5 (mV) 20



0 GR (GAPI) 125  
9 CCL -1  
300 TT3 (usec) 100

0 AMPLITUDE (mV) 100 200 VDL 1200  
0 AMP3 X 5 (mV) 20

## Repeat Pass

Database File: bridge 5-21-10.db  
Dataset Pathname: pass5  
Presentation Format: 7cbvdl  
Dataset Creation: Fri May 21 19:41:01 2010 by Log Std Casedhole 09061  
Charted by:

0 GR (GAPI) 125  
9 CCL -1  
300 TT3 (usec) 100

0 AMPLITUDE (mV) 100 200 VDL 1200  
0 AMP3 X 5 (mV) 20



0 GR (GAPI) 125  
9 CCL -1  
300 TT3 (usec) 100

0 AMPLITUDE (mV) 100 200 VDL 1200  
0 AMP3 X 5 (mV) 20

Sensor	Offset (ft)	Schematic	Description	Len (ft)	OD (in)	Wt (lb)
			CHD01	1.00	1.44	1.00
			LTEC-1.68 LTEC 8k Arm	3.00	1.69	15.00
			CBL102-Tekco102 (102-012)	9.75	1.69	50.00
			LTEC-1.68 LTEC 8k Arm	3.00	1.69	15.00
			CCL-Tekco142 (143-001) Tekco 1 11/16" Sulfanin Cobalt	1.67	1.68	8.00
			GR-Titan340 (340-001) Titan 1 11/16" Gamma Ray Scint	4.75	1.69	20.00
			LTEC-1.68 LTEC 8k Arm	3.00	1.69	15.00

Dataset: bridge 5-22-10.db: field/well/run1/pass4

Total Length: 26.17 ft

Total Weight: 124.00 lb

C.D.: 1.69 in