



FILE NO: 83296
 COMPANY: TRENDWELL ENERGY CORP
 WELL: SMITH 1-10
 FIELD: WILDCAT
 COUNTY: CANYON
 STATE: IDAHO

Ver. 3.87
 LOCATION: SHL: 3300' FSL & 1820' FEL
 SEC 10 TWP 5N RGE 4W
 OTHER SERVICES: HDIL, ZDL-CN, DIRSUR, COREGUN

PERMANENT DATUM: GL ELEVATION 2437 FT
 LOG MEASURED FROM: KB 12 FT ABOVE P.D.
 DRILL. MEAS. FROM: KB
 ELEVATIONS: KB 2449 FT, DF, GL 2437 FT

DATE	24-MAR-2014	
RUN	TRIP	2 3
SERVICE ORDER	US647718	
DEPTH DRILLER	4182 FT	
DEPTH LOGGER	4178 FT	
BOTTOM LOGGED INTERVAL	3860 FT	
TOP LOGGED INTERVAL	1050 FT	
CASING DRILLER	8.625 IN @ 1008 FT	
CASING LOGGER	1007 FT	
BIT SIZE	7.875 IN	
TYPE OF FLUID IN HOLE	WBM	
DENSITY	10.5 LB/G	50 S
PH	7.5	4.0 C3
SOURCE OF SAMPLE	FLOWLINE	
RM AT MEAS. TEMP.	1.67 OHMM	@ 68.0 DEGF
RMF AT MEAS. TEMP.	1.31 OHMM	@ 67.4 DEGF
RMC AT MEAS. TEMP.	1.92 OHMM	@ 68.0 DEGF
SOURCE OF RMI	RMC	MEASURED
RM AT BHT	0.69 OHMM	@ 175.7 DEGF
TIME SINCE CIRCULATION	11.5 HOURS	
MAX. RECORDED TEMP.	175.7 DEGF	
EQUIP. NO.	HL 6685	CASPER
RECORDED BY	KOGHNERCIMA/KZENT	
WITNESSED BY	SANDTVEIT/STEWART	

IN MAKING INTERPRETATIONS OF LOGS OUR EMPLOYEES WILL GIVE THE CUSTOMER THE BENEFIT OF THEIR BEST JUDGEMENT. BUT SINCE ALL INTERPRETATIONS ARE OPINIONS BASED ON INFERENCES FROM ELECTRICAL OR OTHER MEASUREMENTS, WE CANNOT, AND WE DO NOT GUARANTEE THE ACCURACY OR CORRECTNESS OF ANY INTERPRETATION. WE SHALL NOT BE LIABLE OR RESPONSIBLE FOR ANY LOSS, COST, DAMAGES, OR EXPENSES WHATSOEVER INCURRED OR SUSTAINED BY THE CUSTOMER RESULTING FROM ANY INTERPRETATION MADE BY ANY OF OUR EMPLOYEES.

REMARKS

RUN 2 TRIP 3: MREX-GR RUN IN COMBINATION

LAST CIRCULATED ON 24-MAR-14 AT 15:30
 MAIN LOG OFF BOTTOM ON 24-MAR-14 AT 3:30

MREX WAS RUN DECENTRALIZED

MREX WAS RUN IN POROPER + GAS AQUISION MODE

THANK YOU FOR CHOOSING BAKER HUGHES WIRELINE
 RIG: PGDS 7
 CREW: J. MORTON

EQUIPMENT DATA			
RUN	TRIP	TOOL	SERIES NO.
1	1	DHPA	4430XA
1	1	TTRM	3981XA
1	1	WTS	3514XB
1	1	DSL	1329XA

1	1	MREX ELEC	3218QA/3218EC	12610923/10395843	DECENTRALIZED
1	1	MREX MANDR	3218MB	10153642	DECENTRALIZED

MAIN LOG 5"/100FT SCALE (1050'-1200')

ECLIPS 6.2i ECLIPS General Release Rel 6.2i Wed Jun 12 12:21:40 CDT 2013

Patches: 5

Plotted: Tue Mar 25 10:58:15 2014

PARAMETER AND FILTER SUMMARY REPORT

FILE: /dat1a/83295/n857d06.prm
 LOGGING MODE: DEPTH DIRECTION: UP
 TOP DEPTH: 1036.745 ft BOTTOM DEPTH: 1206.780 ft

SYMMETRIC FILTER

MEASUREMENT TYPE	PARAMETER	VALUE	UNITS	INTERVAL (ft)	
TTRM	FILTER (.td)	medium (1)		TOP	BOTTOM
TENSION	FILTER (j)	medium (1)		"	"
GR	FILTER (j)	medium (1)		"	"
	FILTER (.h)	medium (1)		"	"

BOREHOLE & CEMENT

MEASUREMENT TYPE	PARAMETER	VALUE	UNITS	INTERVAL (ft)	
BIT SIZE	BIT SIZE	7.875	in	TOP	BOTTOM

MREX GENERAL

MEASUREMENT TYPE	PARAMETER	VALUE	UNITS	INTERVAL (ft)	
MREX TCC	ACM NAME	PoroPerm + Gas		TOP	BOTTOM

MREX ACQUISITION PARAMETERS

MEASUREMENT TYPE	PARAMETER	VALUE	UNITS	INTERVAL (ft)	
MREX TCC	SUBSET 0 INTERVAL	12.000	s	TOP	BOTTOM
	NUM FREQ GROUPS	1		"	"
	1ST FREQ	INDEX 12, 977.0 kHz		"	"
	2ND FREQ	INDEX 10, 872.0 kHz		"	"
	3RD FREQ	INDEX 8, 774.5 kHz		"	"
	4TH FREQ	INDEX 6, 696.1 kHz		"	"
	5TH FREQ	INDEX 4, 626.0 kHz		"	"
	6TH FREQ	INDEX 2, 558.8 kHz		"	"
	NOMINAL TIP ANG (B)	135	deg	"	"
	PULSE SHAPE	SOFT		"	"
	TW LONG MODE	NORMAL		"	"
	1ST T2 TE	0.60	ms	"	"
	2ND T2 TE	0.60	ms	"	"
	3RD T2 TE	0.60	ms	"	"
	4TH T2 TE	0.60	ms	"	"
	1ST T2 ECHOES	690		"	"
	2ND T2 ECHOES	690		"	"
	3RD T2 ECHOES	690		"	"
	4TH T2 ECHOES	690		"	"
	1ST T2 TW	8.304	s	"	"
	2ND T2 TW	9.223	s	"	"
	3RD T2 TW	0.983	s	"	"
	4TH T2 TW	11.097	s	"	"
	1ST T2 TRAIN LENGTH	414	ms	"	"
	2ND T2 TRAIN LENGTH	414	ms	"	"
	3RD T2 TRAIN LENGTH	414	ms	"	"
	4TH T2 TRAIN LENGTH	414	ms	"	"
	1ST BVI TE	0.40	ms	"	"

2ND BVI TE	0.40	ms	"	"
1ST BVI ECHOES	25		"	"
2ND BVI ECHOES	25		"	"
1ST BVI TW	0.050		"	"
2ND BVI TW	0.100		"	"
1ST BVI TRAIN LEN	10	ms	"	"
2ND BVI TRAIN LEN	10	ms	"	"
CBW TE	0.40	ms	"	"
CBW ECHOES/PACKET	25		"	"
CBW TRAIN LENGTH	10	ms	"	"
1ST CBW PACKETS	16		"	"
2ND CBW PACKETS	16		"	"
3RD CBW PACKETS	16		"	"
4TH CBW PACKETS	16		"	"
CBW TW	0.020	s	"	"

MREX PROCESSING

MEASUREMENT TYPE	PARAMETER	VALUE	UNITS	INTERVAL (ft)	
NOISE & CAL PULSE SELECTION	FREQ DISPLAY SELECT	FREQUENCY A		TOP	BOTTOM
POROSITY	MBVI/MBVM BOUNDARY	CLASTIC (33 ms)		"	"
	USER MBVI/MBVM	33	ms	"	"
	CBW CUTOFF	3.30	ms	"	"
PERMEABILITY	Coates M exponent	4.000		"	"
	Coates N exponent	2.000		"	"
	Coates Constant	10.000		"	"
AVERAGING LENGTH (SAMPLES)	ET Averaging Length	5 samples		"	"
INVERSION (FITTING) PARAMETERS	T2 FIRST BIN	4.00	ms	"	"
	T2 LAST BIN	2048.00	ms	"	"
	T2 BINS USED	19		"	"
	BVI FIRST BIN	4.00	ms	"	"
	BVI LAST BIN	1024.00	ms	"	"
	BVI BINS USED	13		"	"
	CBW FIRST BIN	0.35	ms	"	"
	CBW LAST BIN	1024.00	ms	"	"
	CBW BINS USED	16		"	"
	TPOR FIRST BIN	0.35	ms	"	"
TPOR LAST BIN	2048.00	ms	"	"	
TPOR BINS USED	26		"	"	
RESET PHASE ROTATION ANGLE	RESET ACCUM. PHASE			"	"
MREX FORMATION/BOREHOLE TEMP	BOREHOLE TEMP SRC	MEASURED (3981/3980)		"	"

CURVE DESCRIPTION REPORT

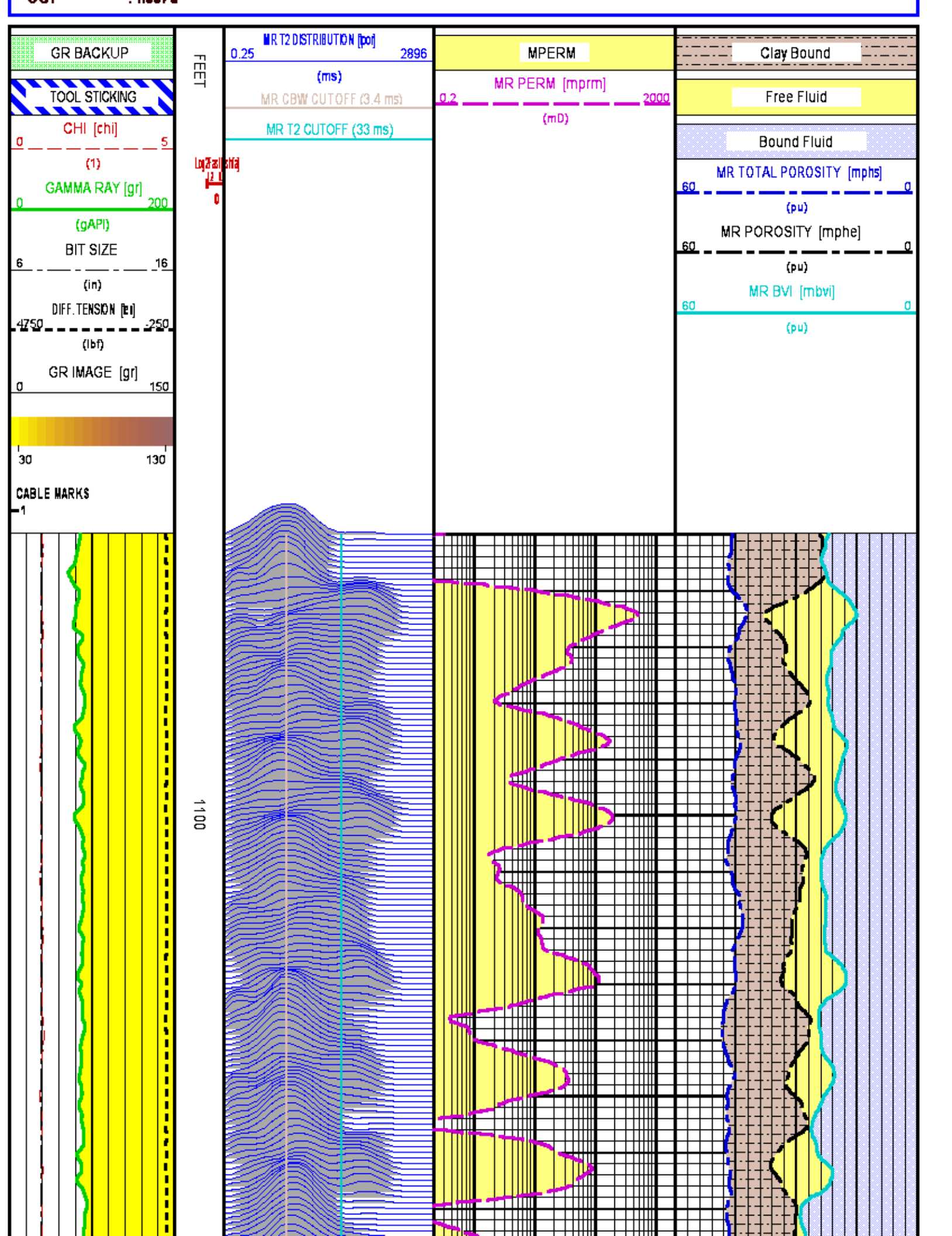
CURVE NAME	CREATION DATE	CURVE DESCRIPTION
F1:BIT	Mar 25 07:15:22 2014	BIT SIZE
F1:CHI	Mar 25 07:15:22 2014	GOODNESS OF FIT OF EACH ECHO DATA PACKET
F1:GR	Mar 25 07:15:22 2014	GAMMA RAY
F1:MBVI	Mar 25 07:15:22 2014	MR IRREDUCIBLE FLUIDS
F1:MMDCNT	Mar 25 07:15:22 2014	NUMBER OF MAGNETIC MARKS DETECTED
F1:MPHE	Mar 25 07:15:22 2014	MR EFFECTIVE POROSITY
F1:MPHS	Mar 25 07:15:22 2014	MR TOTAL POROSITY
F1:MPRM	Mar 25 07:15:22 2014	MR PERMEABILITY
F1:QSHFA	Mar 25 07:15:22 2014	QUALITY OF SHIFTED DATA OF 1ST T2
F1:TEN	Mar 25 07:15:22 2014	DIFFERENTIAL TENSION
F1:TPOR	Mar 25 07:15:22 2014	TOTAL POROSITY (CBW + T2 BIN ARRAY)

CURVE MEASURE POINT OFFSET

CURVE	OFFSET (ft)	CURVE	OFFSET (ft)	CURVE	OFFSET (ft)	CURVE	OFFSET (ft)
BIT	0.00	MBVI	5.00	MPRM	5.00	TPOR	5.00
CHI	5.00	MPHE	5.00	QSHFA	5.00		
GR	26.00	MPHS	5.00	TEN	0.00		

Presentation : cas6685:/dat1a/83295/MREX_6.fvpdf [5"/100' Scale]
Plot Interval : 1050 - 1200 Feet

Data File 1 : F1 : cas6685:/dat1a/83295/n857d06.aff
Created On : Mar 25 07:15:22 2014
Company : TRENDWELL ENERGY CORP
Well : SMITH 1-10
Field : WILDCAT
File Interval : 997.75 - 1204 Feet
QCT : n857d

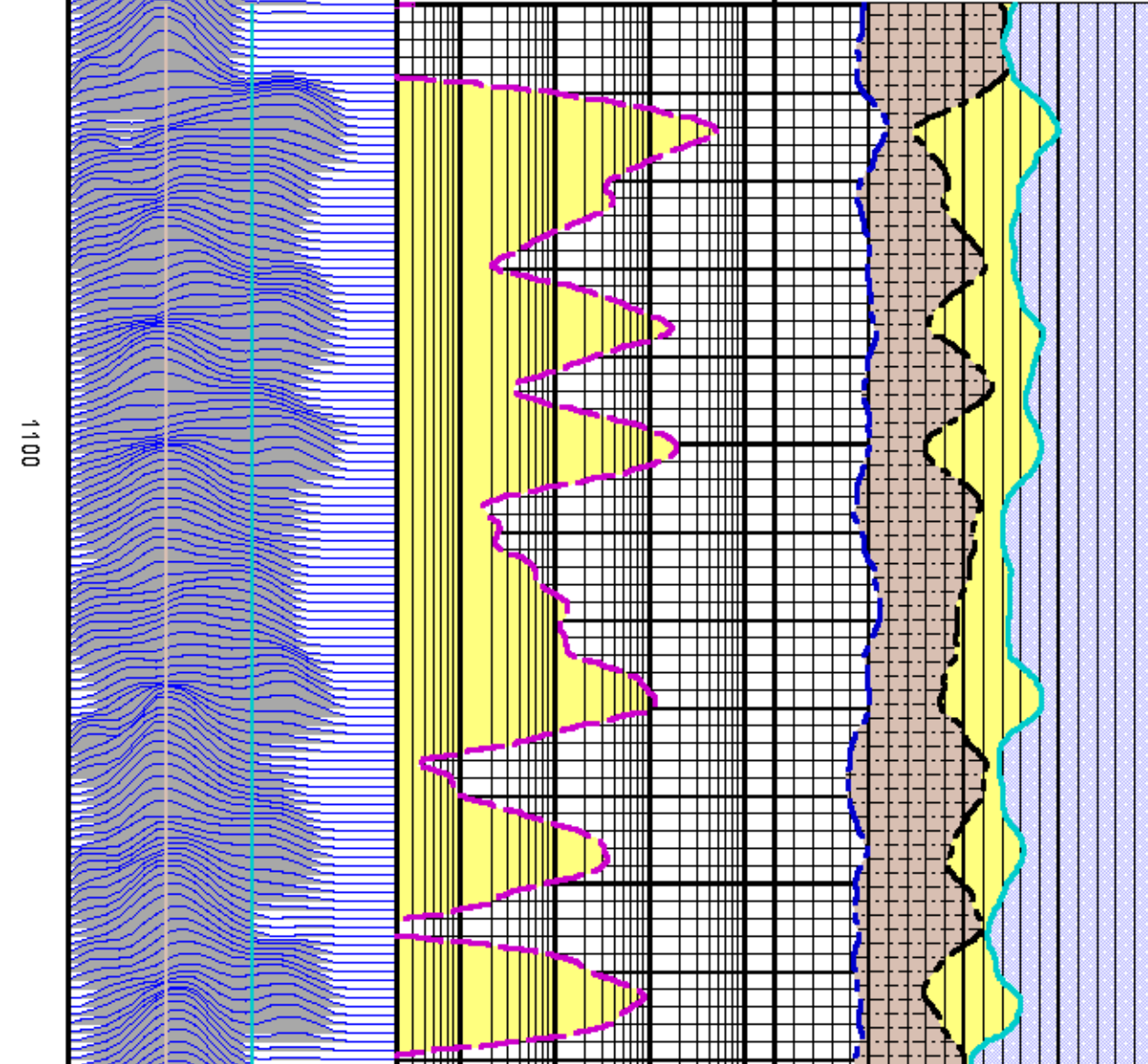


GR BACKUP
 TOOL STICKING
 CHI [chi]
 (1)
 GAMMA RAY [gr]
 (gAPI)
 BIT SIZE
 (in)
 DIFF. TENSION [ti]
 (lbf)
 GR IMAGE [gr]
 CABLE MARKS
 1

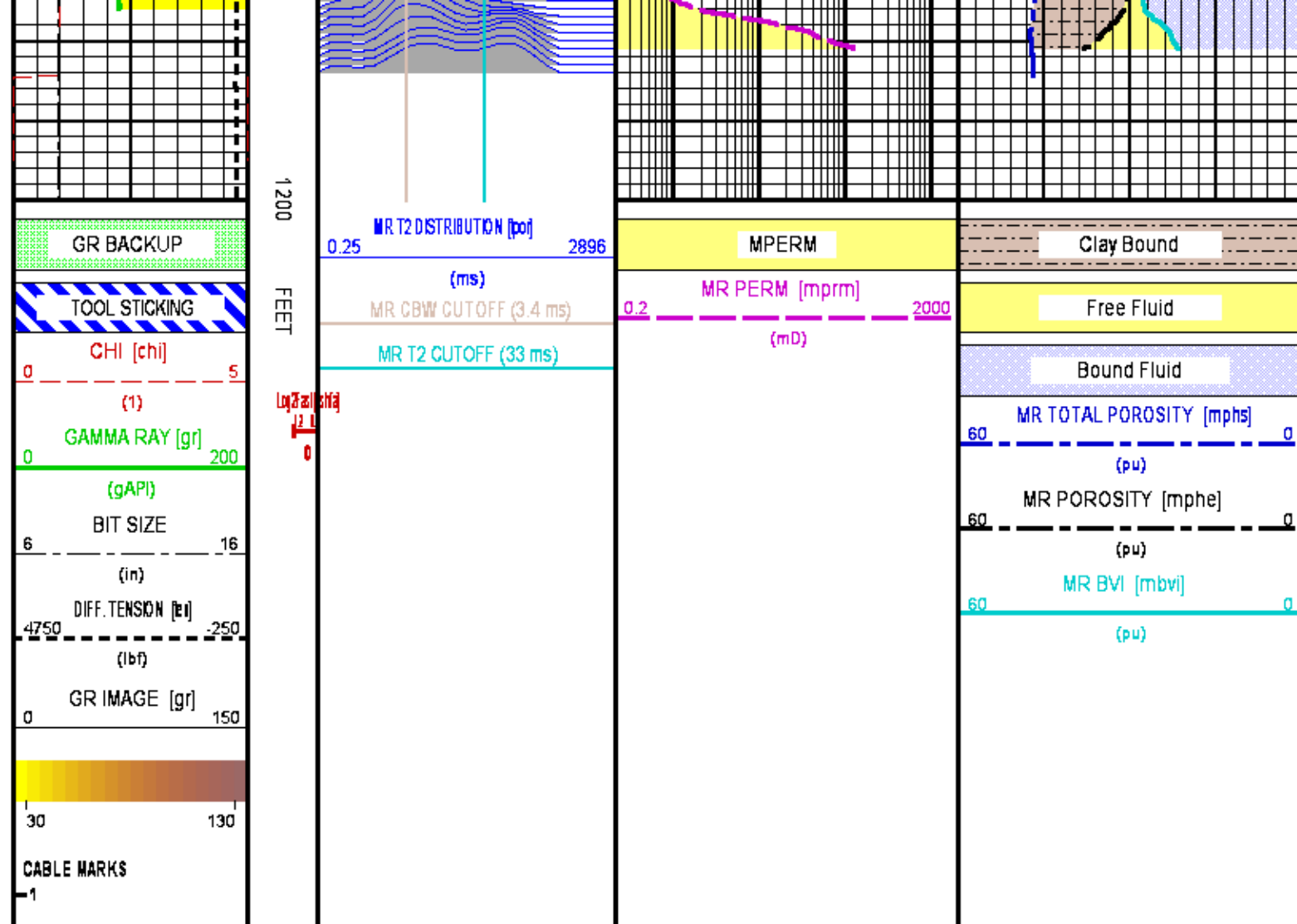
MR T2 DISTRIBUTION [por]
 0.25 2896
 (ms)
 MR CBW CUTOFF (3.4 ms)
 MR T2 CUTOFF (33 ms)

MPERM
 MR PERM [mprm] 2000
 (mD)
 0.2

Clay Bound
 Free Fluid
 Bound Fluid
 MR TOTAL POROSITY [mphs]
 (pu)
 MR POROSITY [mphe]
 (pu)
 MR BVI [mbvi]
 (pu)



1100



MAIN LOG 5"/100FT SCALE (1850'-2000')

ECLIPS 6.2i ECLIPS General Release Rel 6.2i Wed Jun 12 12:21:40 CDT 2013

Patches: 5

Plotted: Tue Mar 25 10:58:01 2014

PARAMETER AND FILTER SUMMARY REPORT

FILE: /dat1a/83295/n857d04.prm
 LOGGING MODE: DEPTH DIRECTION: UP
 TOP DEPTH: 1818.250 ft BOTTOM DEPTH: 2036.961 ft

SYMMETRIC FILTER

MEASUREMENT TYPE	PARAMETER	VALUE	UNITS	INTERVAL (ft)
TTRM	FILTER (.td)	medium (1)		TOP BOTTOM
TENSION	FILTER (j)	medium (1)		" "
GR	FILTER (j)	medium (1)		" "
	FILTER (.h)	medium (1)		" "

BOREHOLE & CEMENT

MEASUREMENT TYPE	PARAMETER	VALUE	UNITS	INTERVAL (ft)
------------------	-----------	-------	-------	---------------

BIT SIZE	BIT SIZE	7.875	in	TOP	BOTTOM
----------	----------	-------	----	-----	--------

MREX GENERAL

MEASUREMENT TYPE	PARAMETER	VALUE	UNITS	INTERVAL (ft)	
MREX TCC	ACM NAME	PoroPerm + Gas		TOP	BOTTOM

MREX ACQUISITION PARAMETERS

MEASUREMENT TYPE	PARAMETER	VALUE	UNITS	INTERVAL (ft)	
MREX TCC	SUBSET 0 INTERVAL	12.000	s	TOP	BOTTOM
	NUM FREQ GROUPS	1		"	"
	1ST FREQ	INDEX 12, 977.0 kHz		"	"
	2ND FREQ	INDEX 10, 872.0 kHz		"	"
	3RD FREQ	INDEX 8, 774.5 kHz		"	"
	4TH FREQ	INDEX 6, 696.1 kHz		"	"
	5TH FREQ	INDEX 4, 626.0 kHz		"	"
	6TH FREQ	INDEX 2, 558.8 kHz		"	"
	NOMINAL TIP ANG (B)	135	deg	"	"
	PULSE SHAPE	SOFT		"	"
	TW LONG MODE	NORMAL		"	"
	1ST T2 TE	0.60	ms	"	"
	2ND T2 TE	0.60	ms	"	"
	3RD T2 TE	0.60	ms	"	"
	4TH T2 TE	0.60	ms	"	"
	1ST T2 ECHOES	690		"	"
	2ND T2 ECHOES	690		"	"
	3RD T2 ECHOES	690		"	"
	4TH T2 ECHOES	690		"	"
	1ST T2 TW	8.304	s	"	"
	2ND T2 TW	9.223	s	"	"
	3RD T2 TW	0.963	s	"	"
	4TH T2 TW	11.097	s	"	"
	1ST T2 TRAIN LENGTH	414	ms	"	"
	2ND T2 TRAIN LENGTH	414	ms	"	"
	3RD T2 TRAIN LENGTH	414	ms	"	"
	4TH T2 TRAIN LENGTH	414	ms	"	"
	1ST BVI TE	0.40	ms	"	"
	2ND BVI TE	0.40	ms	"	"
	1ST BVI ECHOES	25		"	"
	2ND BVI ECHOES	25		"	"
	1ST BVI TW	0.050		"	"
	2ND BVI TW	0.100		"	"
	1ST BVI TRAIN LEN	10	ms	"	"
	2ND BVI TRAIN LEN	10	ms	"	"
	CBW TE	0.40	ms	"	"
	CBW ECHOES/PACKET	25		"	"
	CBW TRAIN LENGTH	10	ms	"	"
	1ST CBW PACKETS	16		"	"
	2ND CBW PACKETS	16		"	"
	3RD CBW PACKETS	16		"	"
	4TH CBW PACKETS	16		"	"
	CBW TW	0.020	s	"	"

MREX PROCESSING

MEASUREMENT TYPE	PARAMETER	VALUE	UNITS	INTERVAL (ft)	
NOISE & CAL PULSE SELECTION	FREQ DISPLAY SELECT	FREQUENCY A		TOP	BOTTOM
POROSITY	MBVI/MBVM BOUNDARY	CLASTIC (33 ms)		"	"
	USER MBVI/MBVM	33	ms	"	"
	CBW CUTOFF	3.30	ms	"	"
PERMEABILITY	Coates M exponent	4.000		"	"
	Coates N exponent	2.000		"	"
	Coates Constant	10.000		"	"
AVERAGING LENGTH (SAMPLES)	ET Averaging Length	5 samples		"	"
INVERSION (FITTING) PARAMETERS	T2 FIRST BIN	4.00	ms	"	"
	T2 LAST BIN	2048.00	ms	"	"
	T2 BINS USED	19		"	"
	BVI FIRST BIN	4.00	ms	"	"
	BVI LAST BIN	1024.00	ms	"	"
	BVI BINS USED	13		"	"
	CBW FIRST BIN	0.35	ms	"	"
	CBW LAST BIN	1024.00	ms	"	"
	CBW BINS USED	16		"	"
	TPOR FIRST BIN	0.35	ms	"	"
	TPOR LAST BIN	2048.00	ms	"	"

TPOR BINS USED

26

RESET PHASE ROTATION ANGLE
MREX FORMATION/BOREHOLE TEMP

RESET ACCUM. PHASE
BOREHOLE TEMP SRC

MEASURED (3981/3980)

" "
" "
" "

CURVE DESCRIPTION REPORT

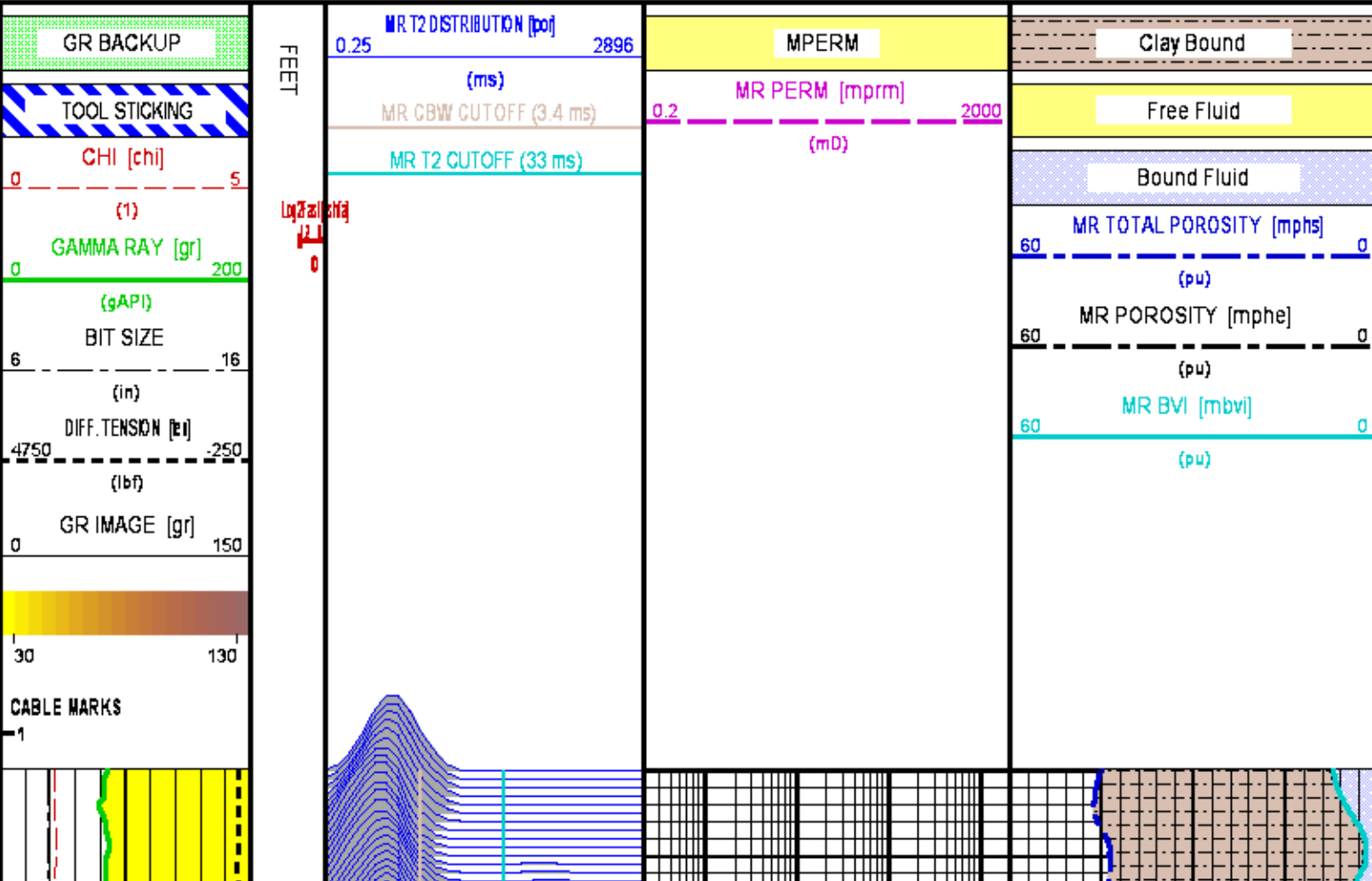
CURVE NAME	CREATION DATE	CURVE DESCRIPTION
F1:BIT	Mar 25 06:23:47 2014	BIT SIZE
F1:CHI	Mar 25 06:23:47 2014	GOODNESS OF FIT OF EACH ECHO DATA PACKET
F1:GR	Mar 25 06:23:47 2014	GAMMA RAY
F1:MBVI	Mar 25 06:23:47 2014	MR IRREDUCIBLE FLUIDS
F1:MMDCNT	Mar 25 06:23:47 2014	NUMBER OF MAGNETIC MARKS DETECTED
F1:MPHE	Mar 25 06:23:47 2014	MR EFFECTIVE POROSITY
F1:MPHS	Mar 25 06:23:47 2014	MR TOTAL POROSITY
F1:MPRM	Mar 25 06:23:47 2014	MR PERMEABILITY
F1:QSHFA	Mar 25 06:23:47 2014	QUALITY OF SHIFTED DATA OF 1ST T2
F1:TEN	Mar 25 06:23:47 2014	DIFFERENTIAL TENSION
F1:TPOR	Mar 25 06:23:47 2014	TOTAL POROSITY (CBW + T2 BIN ARRAY)

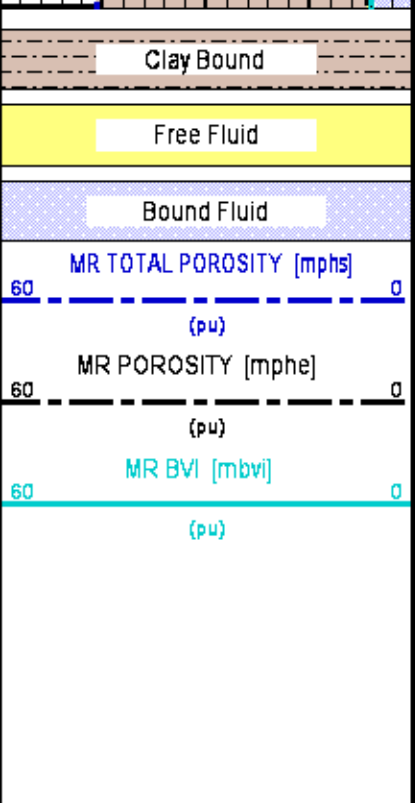
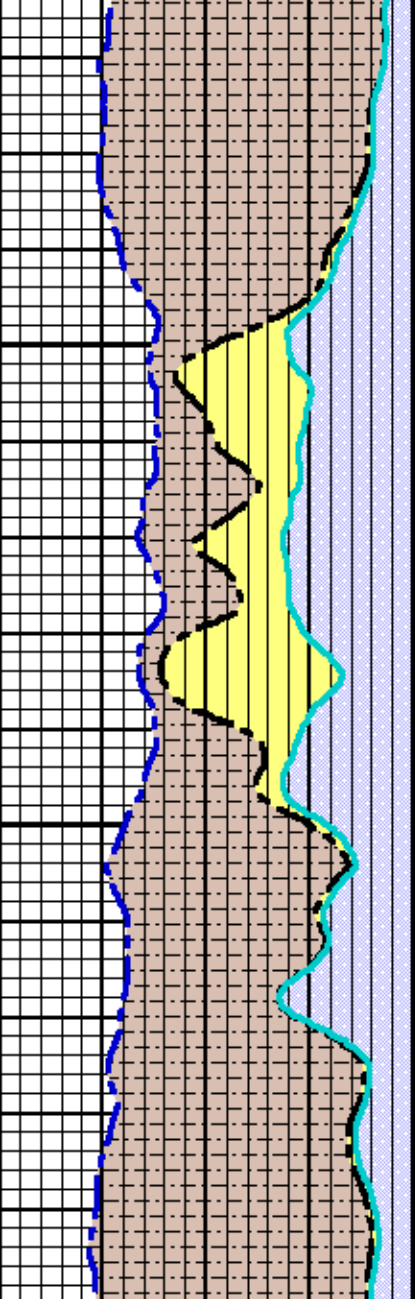
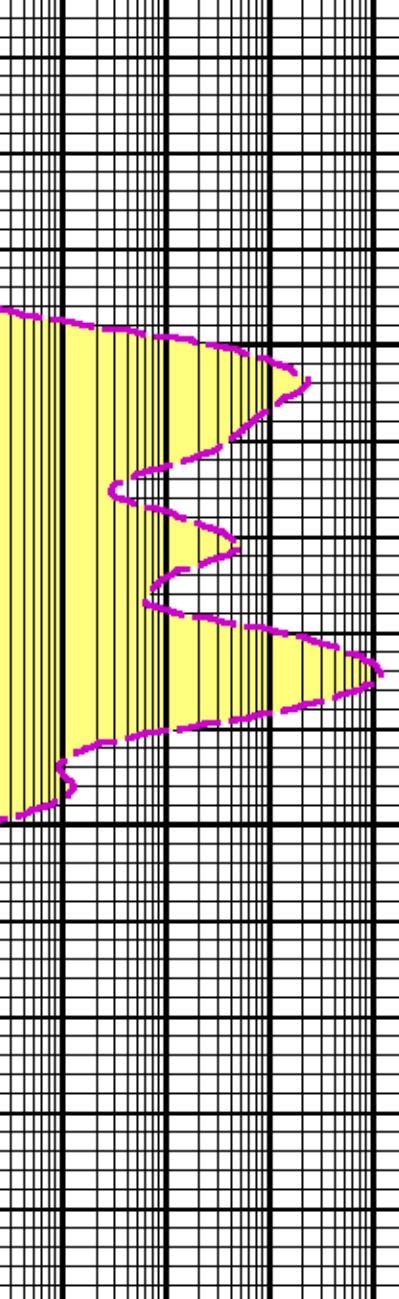
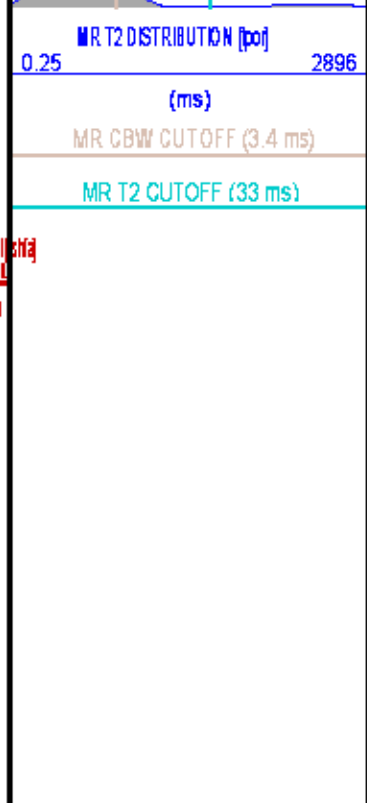
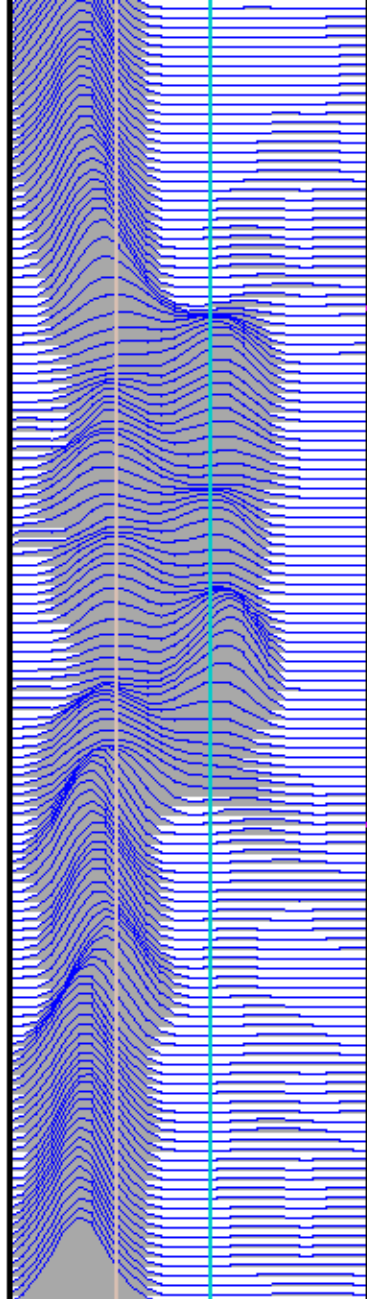
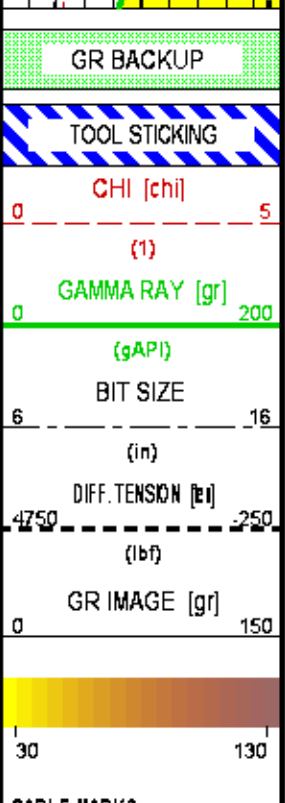
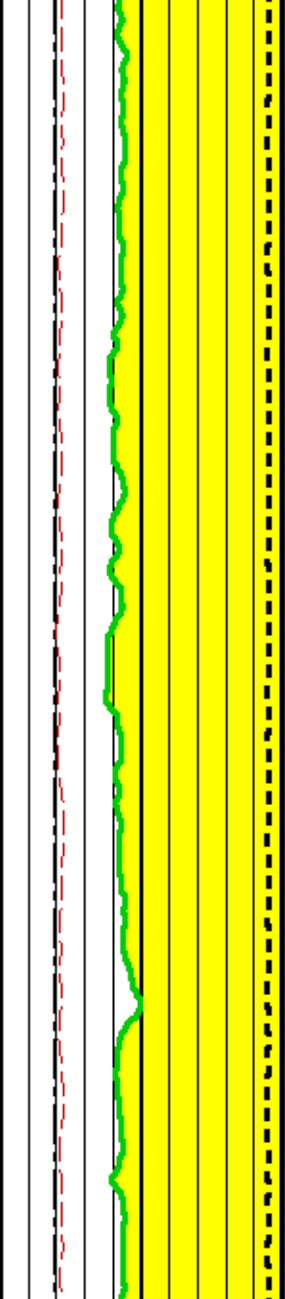
CURVE MEASURE POINT OFFSET

CURVE	OFFSET (ft)	CURVE	OFFSET (ft)	CURVE	OFFSET (ft)	CURVE	OFFSET (ft)
BIT	0.00	MBVI	5.00	MPRM	5.00	TPOR	5.00
CHI	5.00	MPHE	5.00	QSHFA	5.00		
GR	26.00	MPHS	5.00	TEN	0.00		

Presentation : cas6685:/dat1a/83295/MREX_5.fvpdf [5"/100' Scale]
Plot Interval : 1850 - 2000 Feet

Data File 1 : F1 : cas6685:/dat1a/83295/n857d04.aff
Created On : Mar 25 06:23:47 2014
Company : TRENDWELL ENERGY CORP
Well : SMITH 1-10
Field : WILDCAT
File Interval : 1779.25 - 2034 Feet
OCT : n857d





MAIN LOG 5"/100FT SCALE (2200'-2350')

ECLIPS 6.2i ECLIPS General Release Rel 6.2i Wed Jun 12 12:21:40 CDT 2013

Patches: 5

Plotted: Tue Mar 25 10:57:48 2014

PARAMETER AND FILTER SUMMARY REPORT

FILE: /data/83295/n857d03.prm
 LOGGING MODE: DEPTH DIRECTION: UP
 TOP DEPTH: 2180.915 ft BOTTOM DEPTH: 2774.873 ft

SYMMETRIC FILTER

MEASUREMENT TYPE	PARAMETER	VALUE	UNITS	INTERVAL (ft)	
TTRM	FILTER (.td)	medium (1)		TOP	BOTTOM
TENSION	FILTER (j)	medium (1)		"	"
GR	FILTER (j)	medium (1)		"	"
	FILTER (.h)	medium (1)		"	"

BOREHOLE & CEMENT

MEASUREMENT TYPE	PARAMETER	VALUE	UNITS	INTERVAL (ft)	
BIT SIZE	BIT SIZE	7.875	in	TOP	BOTTOM

MREX GENERAL

MEASUREMENT TYPE	PARAMETER	VALUE	UNITS	INTERVAL (ft)	
MREX TCC	ACM NAME	PoroPerm + Gas		TOP	BOTTOM

MREX ACQUISITION PARAMETERS

MEASUREMENT TYPE	PARAMETER	VALUE	UNITS	INTERVAL (ft)	
MREX TCC	SUBSET 0 INTERVAL	12.000	s	TOP	BOTTOM
	NUM FREQ GROUPS	1		"	"
	1ST FREQ	INDEX 12, 977.0 kHz		"	"
	2ND FREQ	INDEX 10, 872.0 kHz		"	"
	3RD FREQ	INDEX 8, 774.5 kHz		"	"
	4TH FREQ	INDEX 6, 696.1 kHz		"	"
	5TH FREQ	INDEX 4, 626.0 kHz		"	"
	6TH FREQ	INDEX 2, 558.8 kHz		"	"
	NOMINAL TIP ANG (B)	135	deg	"	"
	PULSE SHAPE	SOFT		"	"
	TW LONG MODE	NORMAL		"	"
	1ST T2 TE	0.60	ms	"	"
	2ND T2 TE	0.60	ms	"	"
	3RD T2 TE	0.60	ms	"	"
	4TH T2 TE	0.60	ms	"	"
	1ST T2 ECHOES	690		"	"
	2ND T2 ECHOES	690		"	"
	3RD T2 ECHOES	690		"	"
	4TH T2 ECHOES	690		"	"
	1ST T2 TW	8.304	s	"	"
	2ND T2 TW	9.223	s	"	"
	3RD T2 TW	0.983	s	"	"
	4TH T2 TW	11.097	s	"	"
	1ST T2 TRAIN LENGTH	414	ms	"	"
	2ND T2 TRAIN LENGTH	414	ms	"	"
	3RD T2 TRAIN LENGTH	414	ms	"	"
	4TH T2 TRAIN LENGTH	414	ms	"	"
	1ST RVL TE	0.40	ms	"	"

1ST BVI TE	0.40	ms	"	"
2ND BVI TE	0.40	ms	"	"
1ST BVI ECHOES	25		"	"
2ND BVI ECHOES	25		"	"
1ST BVI TW	0.050		"	"
2ND BVI TW	0.100		"	"
1ST BVI TRAIN LEN	10	ms	"	"
2ND BVI TRAIN LEN	10	ms	"	"
CBW TE	0.40	ms	"	"
CBW ECHOES/PACKET	25		"	"
CBW TRAIN LENGTH	10	ms	"	"
1ST CBW PACKETS	16		"	"
2ND CBW PACKETS	16		"	"
3RD CBW PACKETS	16		"	"
4TH CBW PACKETS	16		"	"
CBW TW	0.020	s	"	"

MREX PROCESSING

MEASUREMENT TYPE	PARAMETER	VALUE	UNITS	INTERVAL (ft)	
NOISE & CAL PULSE SELECTION	FREQ DISPLAY SELECT	FREQUENCY A		TOP	BOTTOM
POROSITY	MBVI/MBVM BOUNDARY	CLASTIC (33 mg)		"	"
	USER MBVI/MBVM	33	ms	"	"
	CBW CUTOFF	3.30	ms	"	"
PERMEABILITY	Coates M exponent	4.000		"	"
	Coates N exponent	2.000		"	"
	Coates Constant	10.000		"	"
AVERAGING LENGTH (SAMPLES)	ET Averaging Length	5 samples		"	"
INVERSION (FITTING) PARAMETERS	T2 FIRST BIN	4.00	ms	"	"
	T2 LAST BIN	2048.00	ms	"	"
	T2 BINS USED	19		"	"
	BVI FIRST BIN	4.00	ms	"	"
	BVI LAST BIN	1024.00	ms	"	"
	BVI BINS USED	13		"	"
	CBW FIRST BIN	0.35	ms	"	"
	CBW LAST BIN	1024.00	ms	"	"
	CBW BINS USED	16		"	"
	TPOR FIRST BIN	0.35	ms	"	"
TPOR LAST BIN	2048.00	ms	"	"	
TPOR BINS USED	26		"	"	
RESET PHASE ROTATION ANGLE	RESET ACCUM. PHASE			"	"
MREX FORMATION/BOREHOLE TEMP	BOREHOLE TEMP SRC	MEASURED (3981/3980)		"	"

CURVE DESCRIPTION REPORT

CURVE NAME	CREATION DATE	CURVE DESCRIPTION
F1:BIT	Mar 25 04:27:07 2014	BIT SIZE
F1:CHI	Mar 25 04:27:07 2014	GOODNESS OF FIT OF EACH ECHO DATA PACKET
F1:GR	Mar 25 04:27:07 2014	GAMMA RAY
F1:MBVI	Mar 25 04:27:07 2014	MR IRREDUCIBLE FLUIDS
F1:MMDCNT	Mar 25 04:27:07 2014	NUMBER OF MAGNETIC MARKS DETECTED
F1:MPHE	Mar 25 04:27:07 2014	MR EFFECTIVE POROSITY
F1:MPHS	Mar 25 04:27:07 2014	MR TOTAL POROSITY
F1:MPRM	Mar 25 04:27:07 2014	MR PERMEABILITY
F1:QSHFA	Mar 25 04:27:07 2014	QUALITY OF SHIFTED DATA OF 1ST T2
F1:TEN	Mar 25 04:27:07 2014	DIFFERENTIAL TENSION
F1:TPOR	Mar 25 04:27:07 2014	TOTAL POROSITY (CBW + T2 BIN ARRAY)

CURVE MEASURE POINT OFFSET

CURVE	OFFSET (ft)	CURVE	OFFSET (ft)	CURVE	OFFSET (ft)	CURVE	OFFSET (ft)
BIT	0.00	MBVI	5.00	MPRM	5.00	TPOR	5.00
CHI	5.00	MPHE	5.00	QSHFA	5.00		
GR	26.00	MPHS	5.00	TEN	0.00		

Presentation : cas6685:/dat1a/83295/MREX_4.fvpdf [5"/100' Scale]
Plot Interval : 2200 - 2350 Feet
Data File 1 : F1 : cas6685:/dat1a/83295/n857d03.af
Created On : Mar 25 04:27:07 2014
Company : TRENDWELL ENERGY CORP
Well : SMITH 1-10
Field : WILDCAT
File Interval : 2142 - 2772.25 Feet

GR BACKUP

TOOL STICKING

CHI [chi] 0 5

(1)

GAMMA RAY [gr] 0 200

(gAPI)

BIT SIZE 6 16

(in)

DIFF. TENSION [psi] 4750 -250

(lbf)

GR IMAGE [gr] 0 150

30 130

CABLE MARKS 1

FEET

2200

2300

MR T2 DISTRIBUTION [po] 0.25 2896

(ms)

MR CBW CUTOFF (3.4 ms)

MR T2 CUTOFF (33 ms)

MPERM

MR PERM [mprm] 0.2 2000

(mD)

Clay Bound

Free Fluid

Bound Fluid

MR TOTAL POROSITY [mphs] 60 0

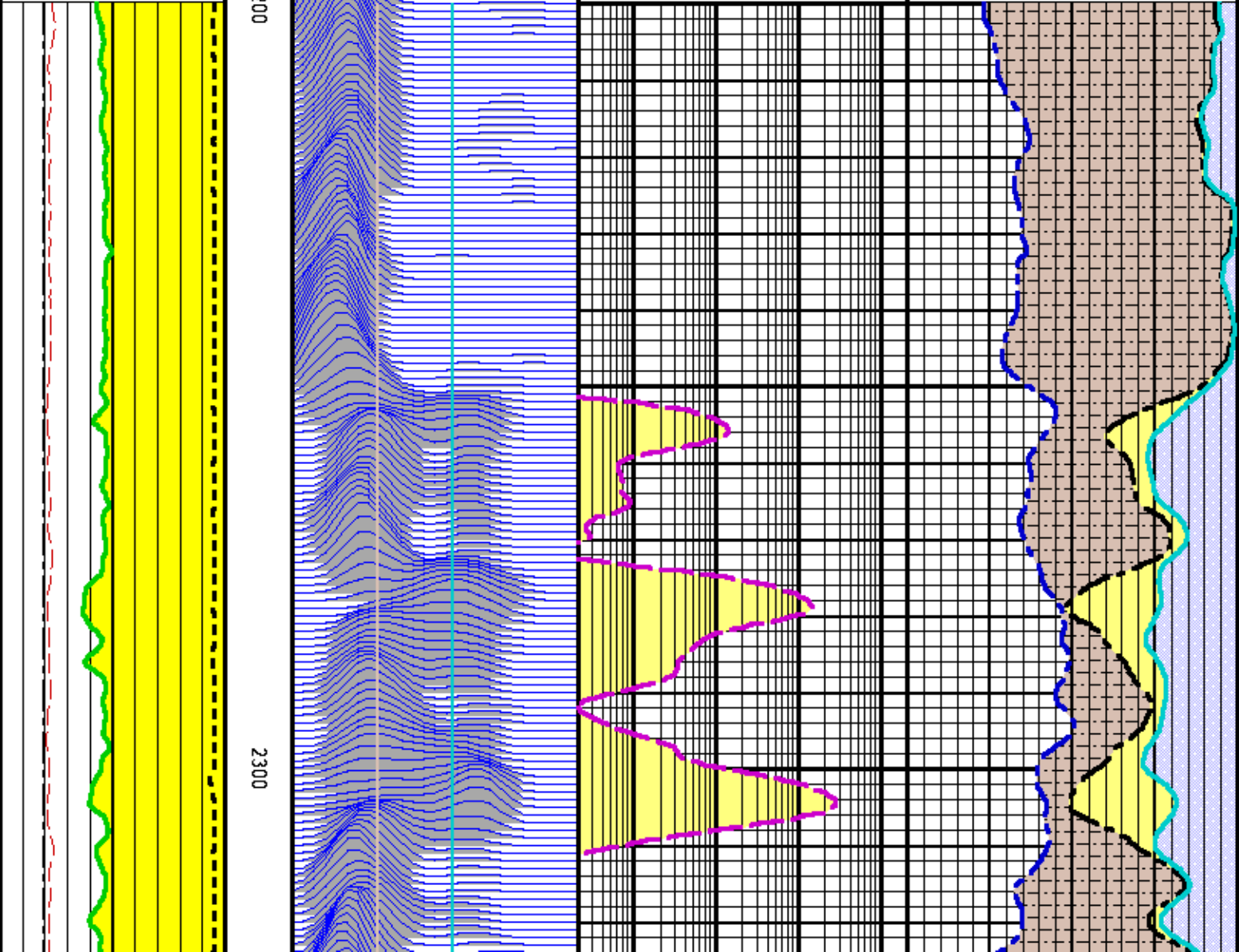
(pu)

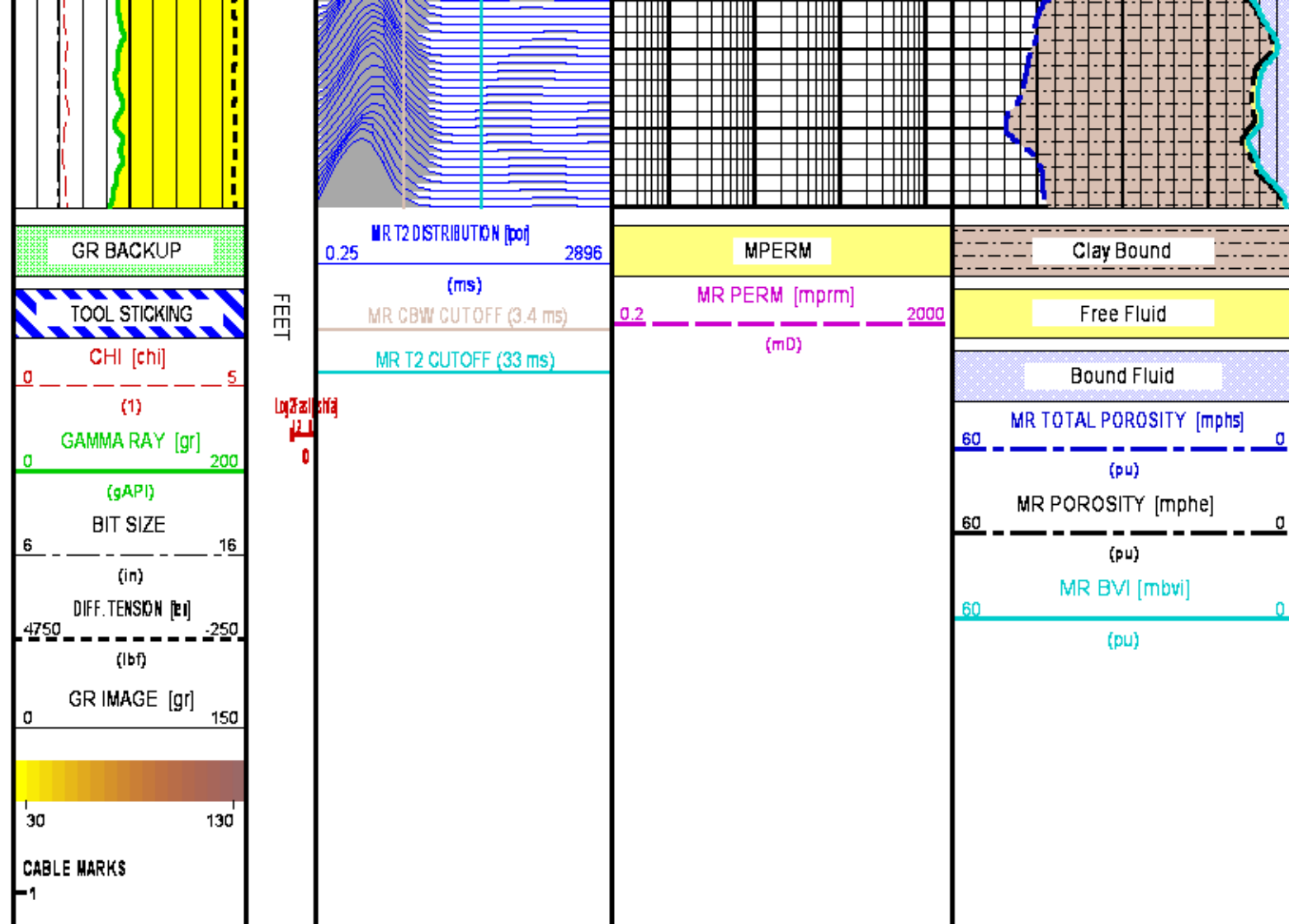
MR POROSITY [mphe] 60 0

(pu)

MR BVI [mbvi] 60 0

(pu)





MAIN LOG 5"/100FT SCALE (2450'-2750')

ECLIPS 6.2i ECLIPS General Release Rel 6.2i Wed Jun 12 12:21:40 CDT 2013

Patches: 5

Plotted: Tue Mar 25 10:57:22 2014

PARAMETER AND FILTER SUMMARY REPORT

FILE: /dat1a/83295/n857d03.prm
 LOGGING MODE: DEPTH DIRECTION: UP
 TOP DEPTH: 2180.915 ft BOTTOM DEPTH: 2774.873 ft

SYMMETRIC FILTER

MEASUREMENT TYPE	PARAMETER	VALUE	UNITS	INTERVAL (ft)
TTRM	FILTER (.td)	medium (1)		TOP BOTTOM
TENSION	FILTER (j)	medium (1)		" "
GR	FILTER (j)	medium (1)		" "
	FILTER (.h)	medium (1)		" "

BOREHOLE & CEMENT

MEASUREMENT TYPE	PARAMETER	VALUE	UNITS	INTERVAL (ft)
------------------	-----------	-------	-------	---------------

BIT SIZE	BIT SIZE	7.875	in	TOP	BOTTOM
----------	----------	-------	----	-----	--------

MREX GENERAL

MEASUREMENT TYPE	PARAMETER	VALUE	UNITS	INTERVAL (ft)	
MREX TCC	ACM NAME	PoroPerm + Gas		TOP	BOTTOM

MREX ACQUISITION PARAMETERS

MEASUREMENT TYPE	PARAMETER	VALUE	UNITS	INTERVAL (ft)	
MREX TCC	SUBSET 0 INTERVAL	12.000	s	TOP	BOTTOM
	NUM FREQ GROUPS	1		"	"
	1ST FREQ	INDEX 12, 977.0 kHz		"	"
	2ND FREQ	INDEX 10, 872.0 kHz		"	"
	3RD FREQ	INDEX 8, 774.5 kHz		"	"
	4TH FREQ	INDEX 6, 696.1 kHz		"	"
	5TH FREQ	INDEX 4, 626.0 kHz		"	"
	6TH FREQ	INDEX 2, 558.8 kHz		"	"
	NOMINAL TIP ANG (B)	135	deg	"	"
	PULSE SHAPE	SOFT		"	"
	TW LONG MODE	NORMAL		"	"
	1ST T2 TE	0.60	ms	"	"
	2ND T2 TE	0.60	ms	"	"
	3RD T2 TE	0.60	ms	"	"
	4TH T2 TE	0.60	ms	"	"
	1ST T2 ECHOES	690		"	"
	2ND T2 ECHOES	690		"	"
	3RD T2 ECHOES	690		"	"
	4TH T2 ECHOES	690		"	"
	1ST T2 TW	8.304	s	"	"
	2ND T2 TW	9.223	s	"	"
	3RD T2 TW	0.983	s	"	"
	4TH T2 TW	11.097	s	"	"
	1ST T2 TRAIN LENGTH	414	ms	"	"
	2ND T2 TRAIN LENGTH	414	ms	"	"
	3RD T2 TRAIN LENGTH	414	ms	"	"
	4TH T2 TRAIN LENGTH	414	ms	"	"
	1ST BVI TE	0.40	ms	"	"
	2ND BVI TE	0.40	ms	"	"
	1ST BVI ECHOES	25		"	"
	2ND BVI ECHOES	25		"	"
	1ST BVI TW	0.050		"	"
	2ND BVI TW	0.100		"	"
	1ST BVI TRAIN LEN	10	ms	"	"
	2ND BVI TRAIN LEN	10	ms	"	"
	CBW TE	0.40	ms	"	"
	CBW ECHOES/PACKET	25		"	"
	CBW TRAIN LENGTH	10	ms	"	"
	1ST CBW PACKETS	16		"	"
	2ND CBW PACKETS	16		"	"
	3RD CBW PACKETS	16		"	"
	4TH CBW PACKETS	16		"	"
	CBW TW	0.020	s	"	"

MREX PROCESSING

MEASUREMENT TYPE	PARAMETER	VALUE	UNITS	INTERVAL (ft)	
NOISE & CAL PULSE SELECTION	FREQ DISPLAY SELECT	FREQUENCY A		TOP	BOTTOM
POROSITY	MBVI/MBVM BOUNDARY	CLASTIC (33 ms)		"	"
	USER MBVI/MBVM	33	ms	"	"
	CBW CUTOFF	3.30	ms	"	"
PERMEABILITY	Coates M exponent	4.000		"	"
	Coates N exponent	2.000		"	"
	Coates Constant	10.000		"	"
AVERAGING LENGTH (SAMPLES)	ET Averaging Length	5 samples		"	"
INVERSION (FITTING) PARAMETERS	T2 FIRST BIN	4.00	ms	"	"
	T2 LAST BIN	2048.00	ms	"	"
	T2 BINS USED	19		"	"
	BVI FIRST BIN	4.00	ms	"	"
	BVI LAST BIN	1024.00	ms	"	"
	BVI BINS USED	13		"	"
	CBW FIRST BIN	0.35	ms	"	"
	CBW LAST BIN	1024.00	ms	"	"
	CBW BINS USED	16		"	"
	TPOR FIRST BIN	0.35	ms	"	"
	TPOR LAST BIN	2048.00	ms	"	"

RESET PHASE ROTATION ANGLE
MREX FORMATION/BOREHOLE TEMP

TPOR BINS USED
RESET ACCUM. PHASE
BOREHOLE TEMP SRC

26
MEASURED (3981/3980)

"
"
"

CURVE DESCRIPTION REPORT

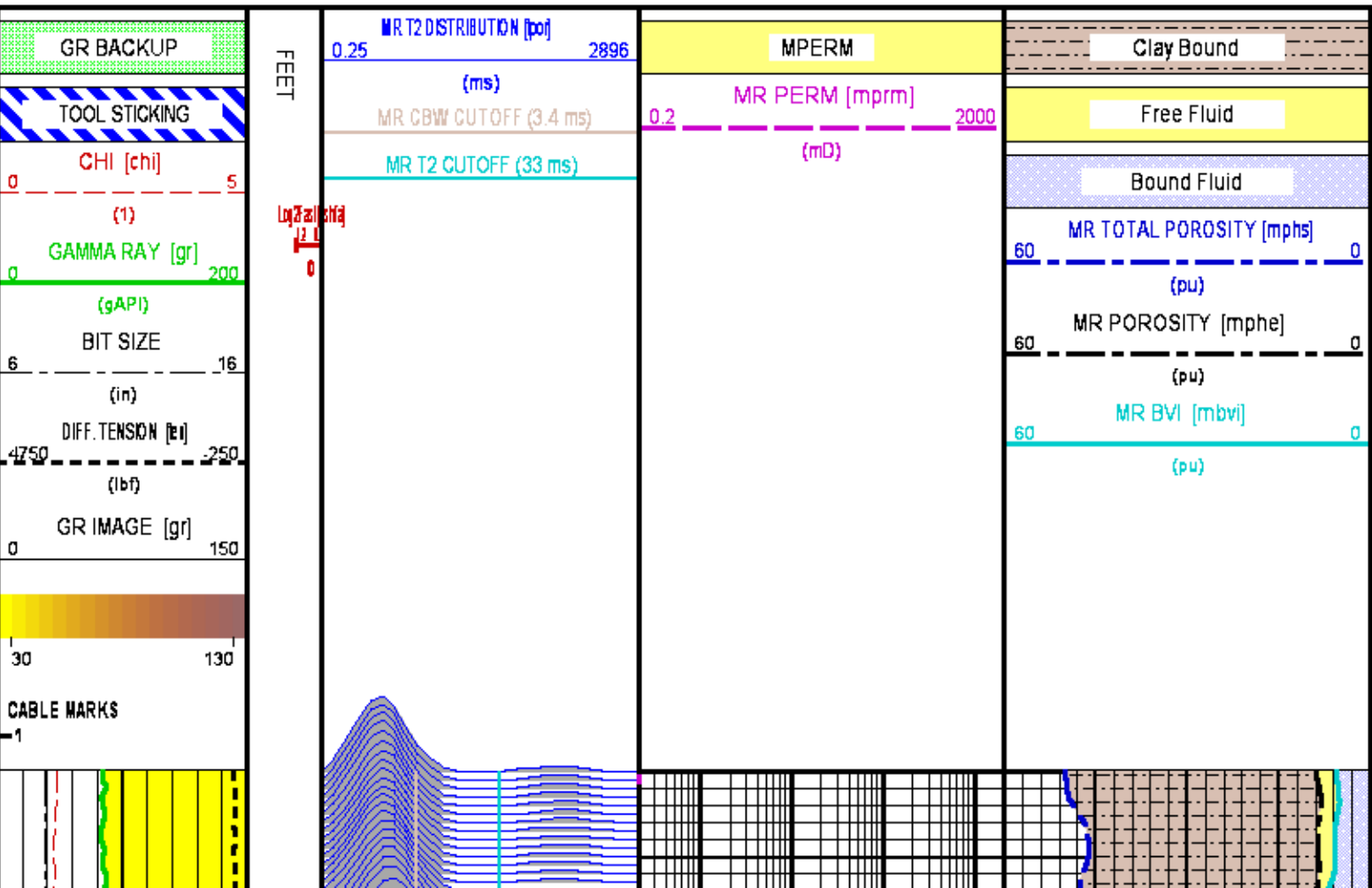
CURVE NAME	CREATION DATE	CURVE DESCRIPTION
F1:BIT	Mar 25 04:27:07 2014	BIT SIZE
F1:CHI	Mar 25 04:27:07 2014	GOODNESS OF FIT OF EACH ECHO DATA PACKET
F1:GR	Mar 25 04:27:07 2014	GAMMA RAY
F1:MBVI	Mar 25 04:27:07 2014	MR IRREDUCIBLE FLUIDS
F1:MMDCNT	Mar 25 04:27:07 2014	NUMBER OF MAGNETIC MARKS DETECTED
F1:MPHE	Mar 25 04:27:07 2014	MR EFFECTIVE POROSITY
F1:MPHS	Mar 25 04:27:07 2014	MR TOTAL POROSITY
F1:MPRM	Mar 25 04:27:07 2014	MR PERMEABILITY
F1:QSHFA	Mar 25 04:27:07 2014	QUALITY OF SHIFTED DATA OF 1ST T2
F1:TEN	Mar 25 04:27:07 2014	DIFFERENTIAL TENSION
F1:TPOR	Mar 25 04:27:07 2014	TOTAL POROSITY (CBW + T2 BIN ARRAY)

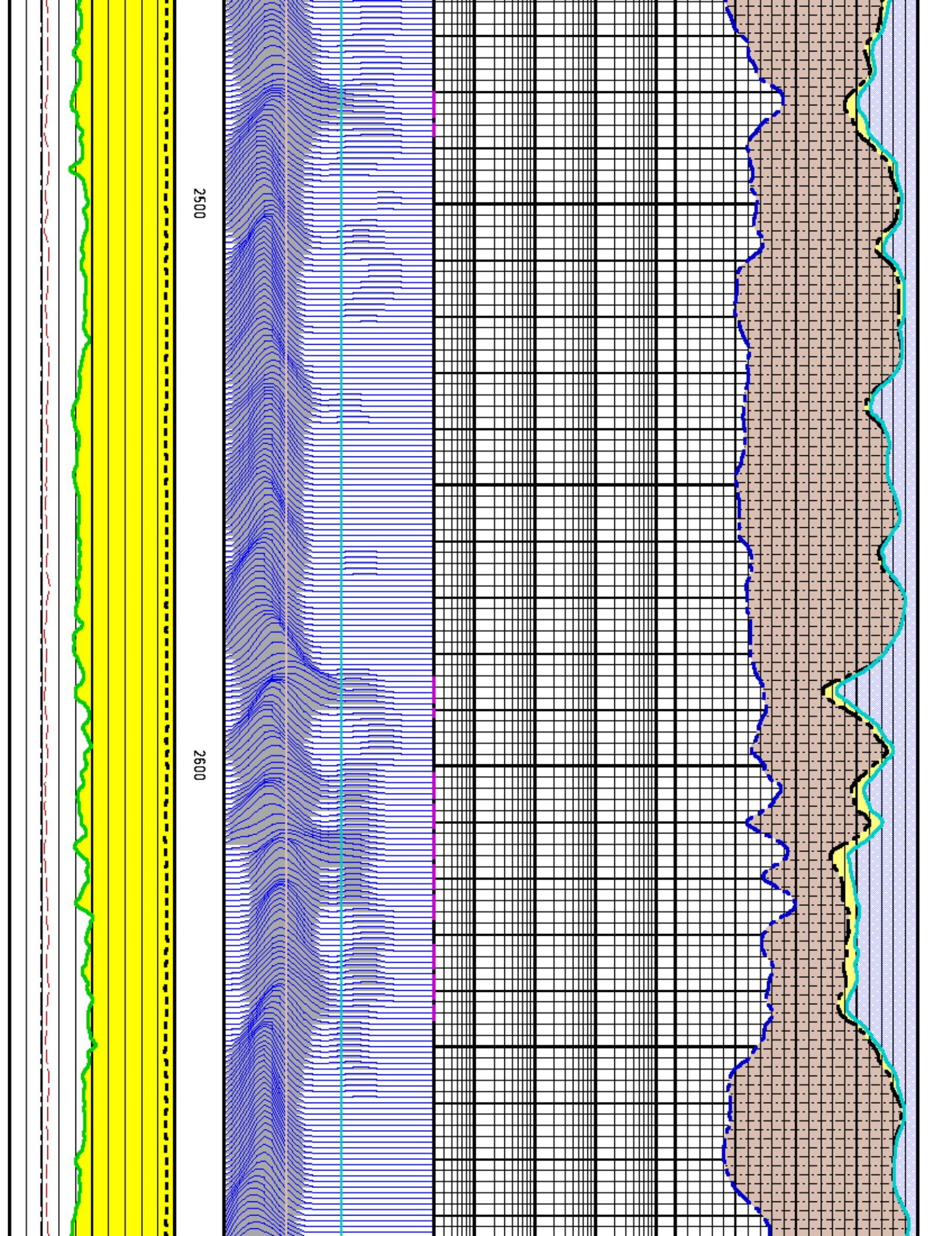
CURVE MEASURE POINT OFFSET

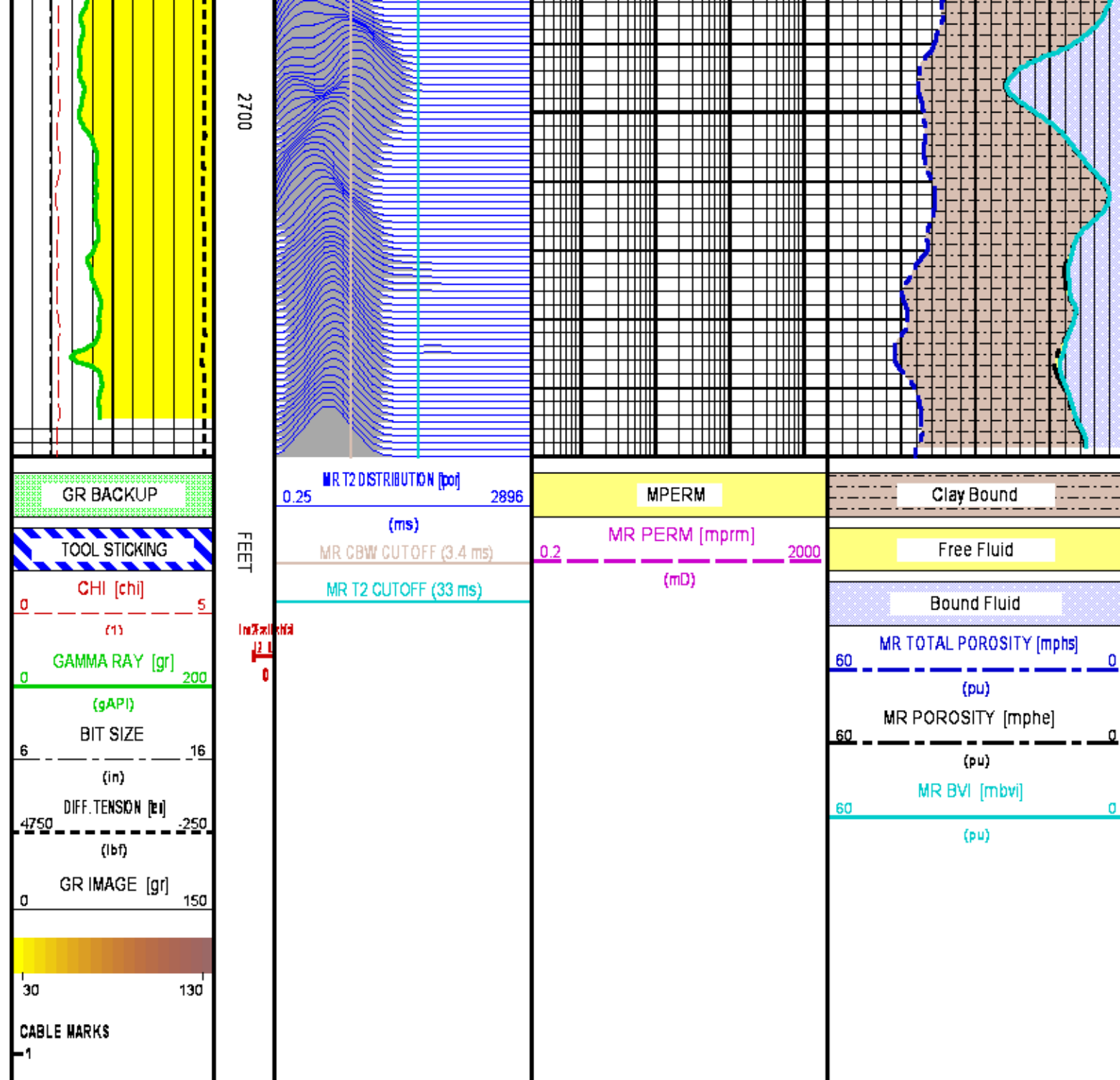
CURVE	OFFSET (ft)	CURVE	OFFSET (ft)	CURVE	OFFSET (ft)	CURVE	OFFSET (ft)
BIT	0.00	MBVI	5.00	MPRM	5.00	TPOR	5.00
CHI	5.00	MPHE	5.00	QSHFA	5.00		
GR	26.00	MPHS	5.00	TEN	0.00		

Presentation : cas6685:/dat1a/83295/MREX_3.fvpdf [5"/100' Scale]
Plot Interval : 2450 - 2750 Feet

Data File 1 : F1 : cas6685:/dat1a/83295/n857d03.aff
Created On : Mar 25 04:27:07 2014
Company : TRENDWELL ENERGY CORP
Well : SMITH 1-10
Field : WILDCAT
File Interval : 2142 - 2772.25 Feet
OCT : n857d







MAIN LOG 5"/100FT SCALE (3350'-3500')

ECLIPS 6.2i ECLIPS General Release Rel 6.2i Wed Jun 12 12:21:40 CDT 2013
Patches: 5

Plotted: Tue Mar 25 10:56:57 2014

PARAMETER AND FILTER SUMMARY REPORT

FILE: /dat1 a/83295/n857 d02.prm

LOGGING MODE: DEPTH
TOP DEPTH: 3324.719 ft

DIRECTION: UP
BOTTOM DEPTH: 3542.628 ft

SYMMETRIC FILTER

MEASUREMENT TYPE	PARAMETER	VALUE	UNITS	INTERVAL (ft)	
TTRM	FILTER (.td)	medium (1)		TOP	BOTTOM
TENSION	FILTER (j)	medium (1)		"	"
GR	FILTER (j)	medium (1)		"	"
	FILTER (.h)	medium (1)		"	"

BOREHOLE & CEMENT

MEASUREMENT TYPE	PARAMETER	VALUE	UNITS	INTERVAL (ft)	
BIT SIZE	BIT SIZE	7.875	in	TOP	BOTTOM

MREX GENERAL

MEASUREMENT TYPE	PARAMETER	VALUE	UNITS	INTERVAL (ft)	
MREX TCC	ACM NAME	PoroPerm + Gas		TOP	BOTTOM

MREX ACQUISITION PARAMETERS

MEASUREMENT TYPE	PARAMETER	VALUE	UNITS	INTERVAL (ft)	
MREX TCC	SUBSET 0 INTERVAL	12.000	s	TOP	BOTTOM
	NUM FREQ GROUPS	1		"	"
	1ST FREQ	INDEX 12, 977.0 kHz		"	"
	2ND FREQ	INDEX 10, 872.0 kHz		"	"
	3RD FREQ	INDEX 8, 774.5 kHz		"	"
	4TH FREQ	INDEX 6, 696.1 kHz		"	"
	5TH FREQ	INDEX 4, 626.0 kHz		"	"
	6TH FREQ	INDEX 2, 558.8 kHz		"	"
	NOMINAL TIP ANG (B)	135	deg	"	"
	PULSE SHAPE	SOFT		"	"
	TW LONG MODE	NORMAL		"	"
	1ST T2 TE	0.60	ms	"	"
	2ND T2 TE	0.60	ms	"	"
	3RD T2 TE	0.60	ms	"	"
	4TH T2 TE	0.60	ms	"	"
	1ST T2 ECHOES	690		"	"
	2ND T2 ECHOES	690		"	"
	3RD T2 ECHOES	690		"	"
	4TH T2 ECHOES	690		"	"
	1ST T2 TW	8.304	s	"	"
	2ND T2 TW	9.223	s	"	"
	3RD T2 TW	0.983	s	"	"
	4TH T2 TW	11.097	s	"	"
	1ST T2 TRAIN LENGTH	414	ms	"	"
	2ND T2 TRAIN LENGTH	414	ms	"	"
	3RD T2 TRAIN LENGTH	414	ms	"	"
	4TH T2 TRAIN LENGTH	414	ms	"	"
	1ST BVI TE	0.40	ms	"	"
	2ND BVI TE	0.40	ms	"	"
	1ST BVI ECHOES	25		"	"
	2ND BVI ECHOES	25		"	"
	1ST BVI TW	0.050		"	"
	2ND BVI TW	0.100		"	"
	1ST BVI TRAIN LEN	10	ms	"	"
	2ND BVI TRAIN LEN	10	ms	"	"
	CBW TE	0.40	ms	"	"
	CBW ECHOES/PACKET	25		"	"
	CBW TRAIN LENGTH	10	ms	"	"
	1ST CBW PACKETS	16		"	"
	2ND CBW PACKETS	16		"	"
	3RD CBW PACKETS	16		"	"
	4TH CBW PACKETS	16		"	"
	CBW TW	0.020	s	"	"

MREX PROCESSING

MEASUREMENT TYPE	PARAMETER	VALUE	UNITS	INTERVAL (ft)	
NOISE & CAL PULSE SELECTION	FREQ DISPLAY SELECT	FREQUENCY A		TOP	BOTTOM
POROSITY	MBVI/MBVM BOUNDARY	CLASTIC (33 ms)		"	"
	USER MBVI/MBVM	33	ms	"	"
	CBW CUTOFF	3.30	ms	"	"
PERMEABILITY	Coxeter M exponent	4.000		"	"

Coates N exponent	4.000				
Coates Constant	2.000				
Coates Constant	10.000				
AVERAGING LENGTH (SAMPLES)	ET Averaging Length	5 samples			
INVERSION (FITTING) PARAMETERS	T2 FIRST BIN	4.00	ms		
	T2 LAST BIN	2048.00	ms		
	T2 BINS USED	19			
	BVI FIRST BIN	4.00	ms		
	BVI LAST BIN	1024.00	ms		
	BVI BINS USED	13			
	CBW FIRST BIN	0.35	ms		
	CBW LAST BIN	1024.00	ms		
	CBW BINS USED	16			
	TPOR FIRST BIN	0.35	ms		
	TPOR LAST BIN	2048.00	ms		
TPOR BINS USED	26				
RESET PHASE ROTATION ANGLE	RESET ACCUM. PHASE				
MREX FORMATION/BOREHOLE TEMP	BOREHOLE TEMP SRC	MEASURED (3981/3980)			

CURVE DESCRIPTION REPORT

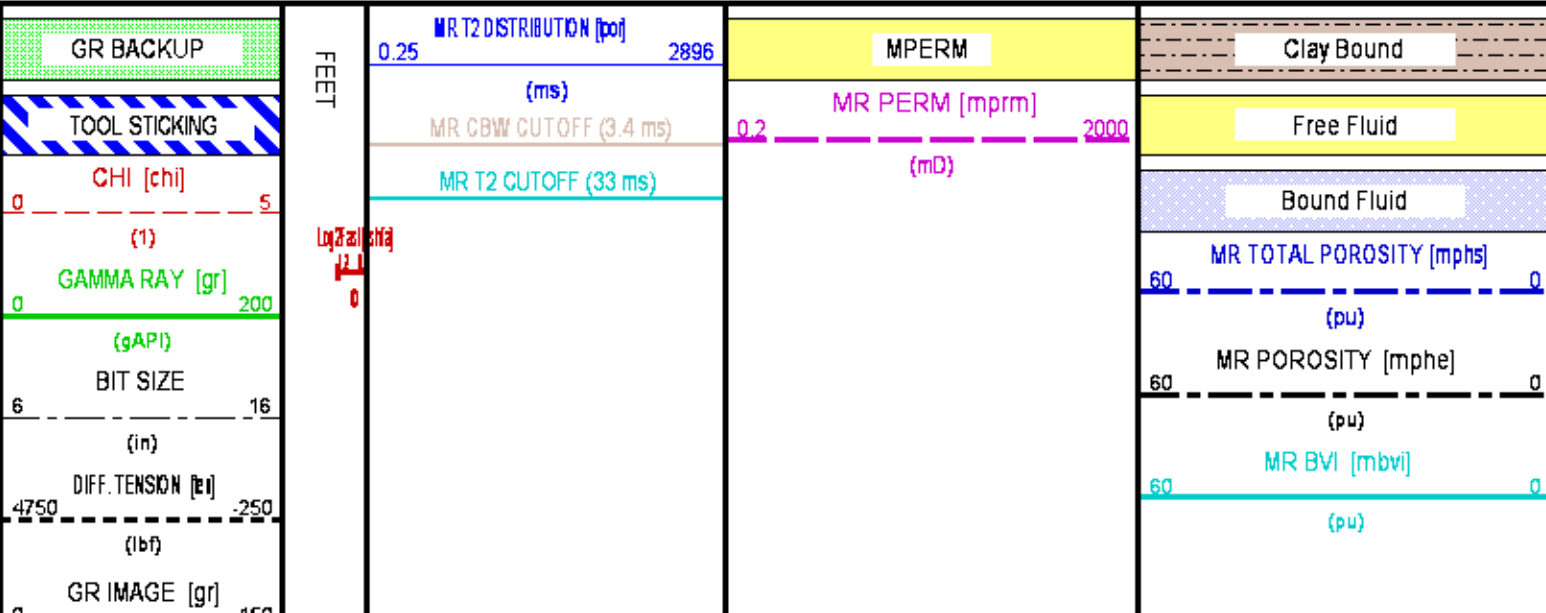
CURVE NAME	CREATION DATE	CURVE DESCRIPTION
F1:BIT	Mar 25 03:42:24 2014	BIT SIZE
F1:CHI	Mar 25 03:42:24 2014	GOODNESS OF FIT OF EACH ECHO DATA PACKET
F1:GR	Mar 25 03:42:24 2014	GAMMA RAY
F1:MBVI	Mar 25 03:42:24 2014	MR IRREDUCIBLE FLUIDS
F1:MMDCNT	Mar 25 03:42:24 2014	NUMBER OF MAGNETIC MARKS DETECTED
F1:MPHE	Mar 25 03:42:24 2014	MR EFFECTIVE POROSITY
F1:MPHS	Mar 25 03:42:24 2014	MR TOTAL POROSITY
F1:MPRM	Mar 25 03:42:24 2014	MR PERMEABILITY
F1:QSHFA	Mar 25 03:42:24 2014	QUALITY OF SHIFTED DATA OF 1ST T2
F1:TEN	Mar 25 03:42:24 2014	DIFFERENTIAL TENSION
F1:TPOR	Mar 25 03:42:24 2014	TOTAL POROSITY (CBW + T2 BIN ARRAY)

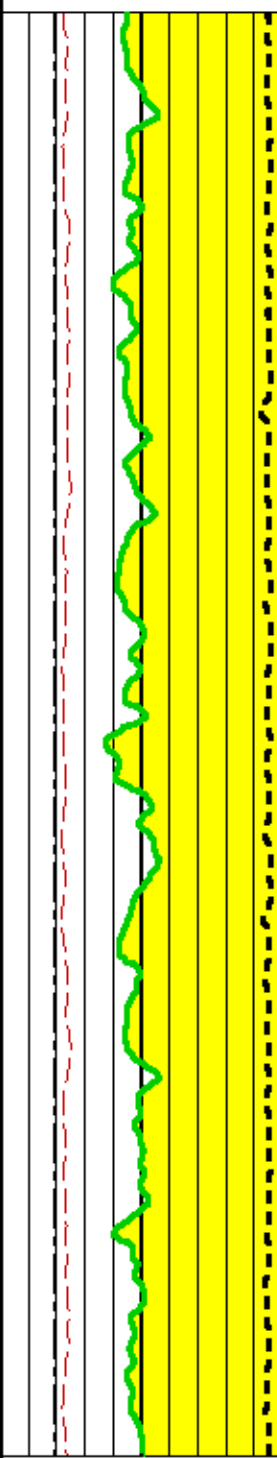
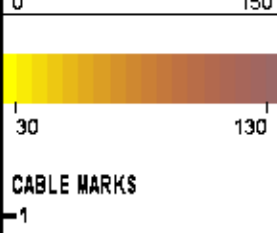
CURVE MEASURE POINT OFFSET

CURVE	OFFSET (ft)	CURVE	OFFSET (ft)	CURVE	OFFSET (ft)	CURVE	OFFSET (ft)
BIT	0.00	MBVI	5.00	MPRM	5.00	TPOR	5.00
CHI	5.00	MPHE	5.00	QSHFA	5.00		
GR	26.00	MPHS	5.00	TEN	0.00		

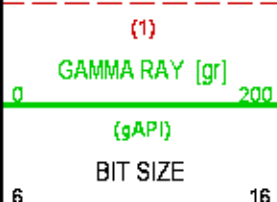
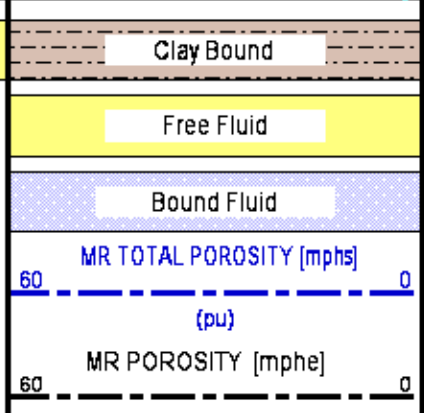
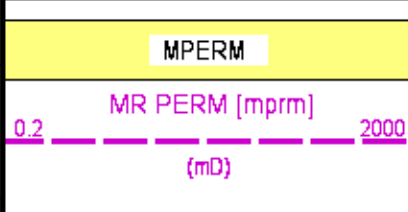
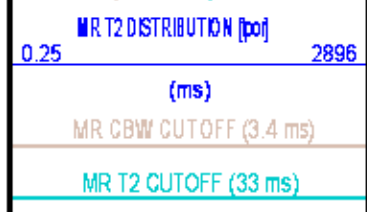
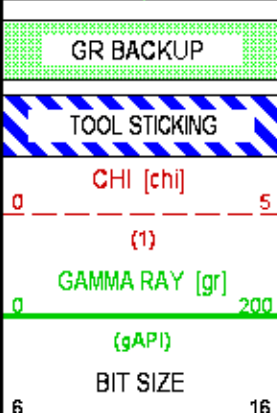
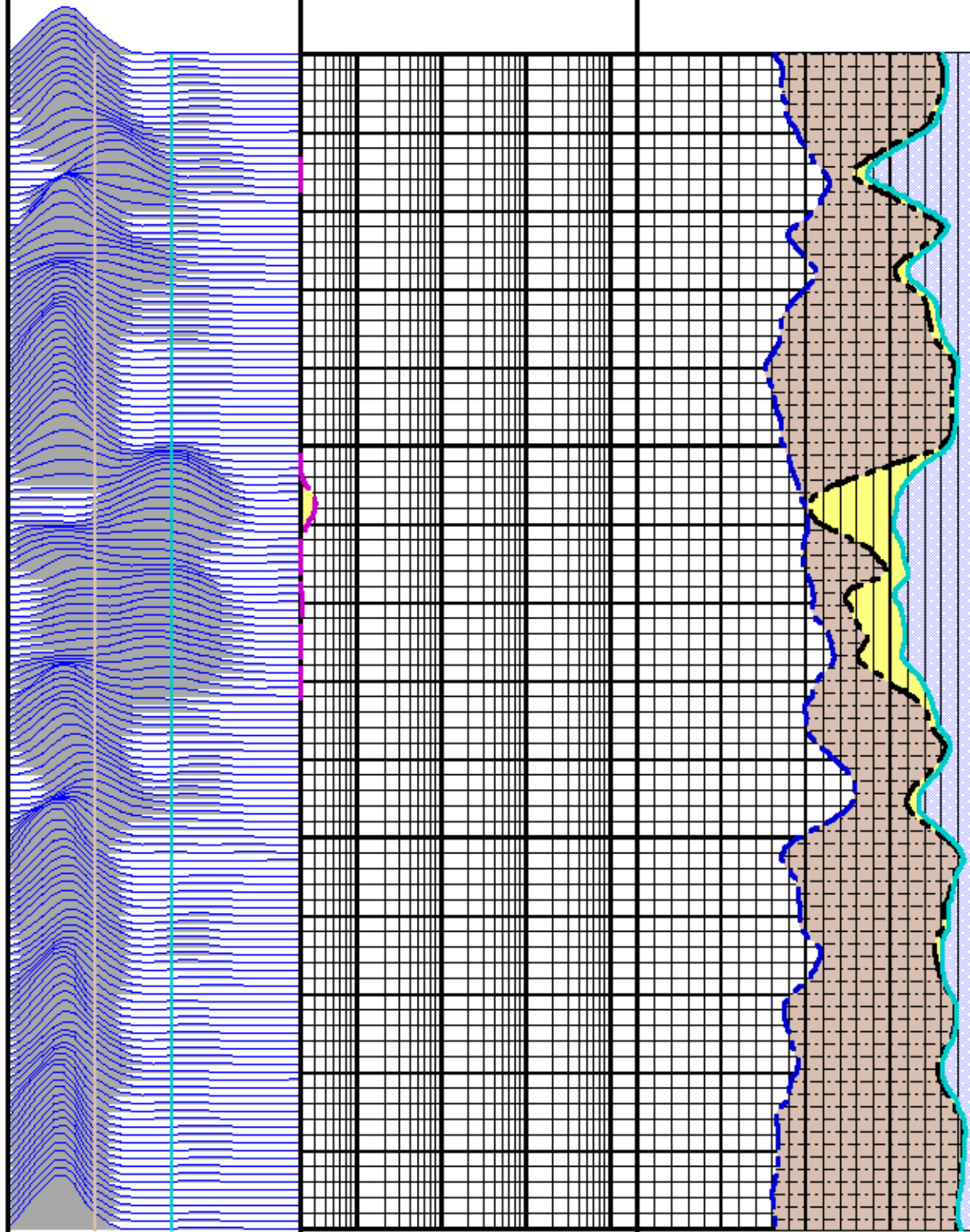
Presentation : cas6685:/dat1a/83295/MREX_2.fvpdf [5"/100' Scale]
Plot Interval : 3350 - 3500 Feet

Data File 1 : F1 : cas6685:/dat1a/83295/n857d02.aff
Created On : Mar 25 03:42:24 2014
Company : TRENDWELL ENERGY CORP
Well : SMITH 1-10
Field : WILDCAT
File Interval : 3285.75 - 3540 Feet
OCT : n857d





3400
3500
FEET



(in)			(pu)
DIFF. TENSION [ta]			MR BVI [mbvi]
4750			60
-250			0
(lbf)			(pu)
GR IMAGE [gr]			
0			
150			
30			
130			
CABLE MARKS			
1			

MAIN LOG 5"/100FT SCALE (3800'-3860')

ECLIPS 6.2i ECLIPS General Release Rel 6.2i Wed Jun 12 12:21:40 CDT 2013

Patches: 5

Plotted: Tue Mar 25 10:56:34 2014

PARAMETER AND FILTER SUMMARY REPORT

FILE: /dat1a/83295/n857d01.prm
 LOGGING MODE: DEPTH DIRECTION: UP
 TOP DEPTH: 3775.934 ft BOTTOM DEPTH: 3891.958 ft

SYMMETRIC FILTER

MEASUREMENT TYPE	PARAMETER	VALUE	UNITS	INTERVAL (ft)	
TTRM	FILTER (.td)	medium (1)		TOP	BOTTOM
TENSION	FILTER (Q)	medium (1)		"	"
GR	FILTER (Q)	medium (1)		"	"
	FILTER (.h)	medium (1)		"	"

BOREHOLE & CEMENT

MEASUREMENT TYPE	PARAMETER	VALUE	UNITS	INTERVAL (ft)	
BIT SIZE	BIT SIZE	7.875	in	TOP	BOTTOM

MREX GENERAL

MEASUREMENT TYPE	PARAMETER	VALUE	UNITS	INTERVAL (ft)	
MREX TCC	ACM NAME	PoroPerm + Gas		TOP	BOTTOM

MREX ACQUISITION PARAMETERS

MEASUREMENT TYPE	PARAMETER	VALUE	UNITS	INTERVAL (ft)	
MREX TCC	SUBSET 0 INTERVAL	12.000	s	TOP	BOTTOM
	NUM FREQ GROUPS	1		"	"
	1ST FREQ	INDEX 12, 977.0 kHz		"	"
	2ND FREQ	INDEX 10, 872.0 kHz		"	"
	3RD FREQ	INDEX 8, 774.5 kHz		"	"
	4TH FREQ	INDEX 6, 696.1 kHz		"	"
	5TH FREQ	INDEX 4, 626.0 kHz		"	"
	6TH FREQ	INDEX 2, 558.8 kHz		"	"
	NOMINAL TIP ANG (B)	135	deg	"	"
	PULSE SHAPE	SOFT		"	"
	TW LONG MODE	NORMAL		"	"
	1ST T2 TE	0.60	ms	"	"
	2ND T2 TE	0.60	ms	"	"

3RD T2 TE	0.60	ms	"	"
4TH T2 TE	0.60	ms	"	"
1ST T2 ECHOES	690		"	"
2ND T2 ECHOES	690		"	"
3RD T2 ECHOES	690		"	"
4TH T2 ECHOES	690		"	"
1ST T2 TW	8.304	s	"	"
2ND T2 TW	9.223	s	"	"
3RD T2 TW	0.983	s	"	"
4TH T2 TW	11.097	s	"	"
1ST T2 TRAIN LENGTH	414	ms	"	"
2ND T2 TRAIN LENGTH	414	ms	"	"
3RD T2 TRAIN LENGTH	414	ms	"	"
4TH T2 TRAIN LENGTH	414	ms	"	"
1ST BVI TE	0.40	ms	"	"
2ND BVI TE	0.40	ms	"	"
1ST BVI ECHOES	25		"	"
2ND BVI ECHOES	25		"	"
1ST BVI TW	0.050		"	"
2ND BVI TW	0.100		"	"
1ST BVI TRAIN LEN	10	ms	"	"
2ND BVI TRAIN LEN	10	ms	"	"
CBW TE	0.40	ms	"	"
CBW ECHOES/PACKET	25		"	"
CBW TRAIN LENGTH	10	ms	"	"
1ST CBW PACKETS	16		"	"
2ND CBW PACKETS	16		"	"
3RD CBW PACKETS	16		"	"
4TH CBW PACKETS	16		"	"
CBW TW	0.020	s	"	"

MREX PROCESSING

MEASUREMENT TYPE	PARAMETER	VALUE	UNITS	INTERVAL (ft)
NOISE & CAL PULSE SELECTION	FREQ DISPLAY SELECT	FREQUENCY A		TOP BOTTOM
POROSITY	MBVI/MBVM BOUNDARY	CLASTIC (33 ms)		" "
	USER MBVI/MBVM	33	ms	" "
	CBW CUTOFF	3.30	ms	" "
PERMEABILITY	Coates M exponent	4.000		" "
	Coates N exponent	2.000		" "
	Coates Constant	10.000		" "
AVERAGING LENGTH (SAMPLES)	ET Averaging Length	5 samples		" "
INVERSION (FITTING) PARAMETERS	T2 FIRST BIN	4.00	ms	" "
	T2 LAST BIN	2048.00	ms	" "
	T2 BINS USED	19		" "
	BVI FIRST BIN	4.00	ms	" "
	BVI LAST BIN	1024.00	ms	" "
	BVI BINS USED	13		" "
	CBW FIRST BIN	0.35	ms	" "
	CBW LAST BIN	1024.00	ms	" "
	CBW BINS USED	16		" "
	TPOR FIRST BIN	0.35	ms	" "
	TPOR LAST BIN	2048.00	ms	" "
	TPOR BINS USED	26		" "
RESET PHASE ROTATION ANGLE	RESET ACCUM. PHASE			" "
MREX FORMATION/BOREHOLE TEMP	BOREHOLE TEMP SRC	MEASURED (3981/3980)		" "

CURVE DESCRIPTION REPORT

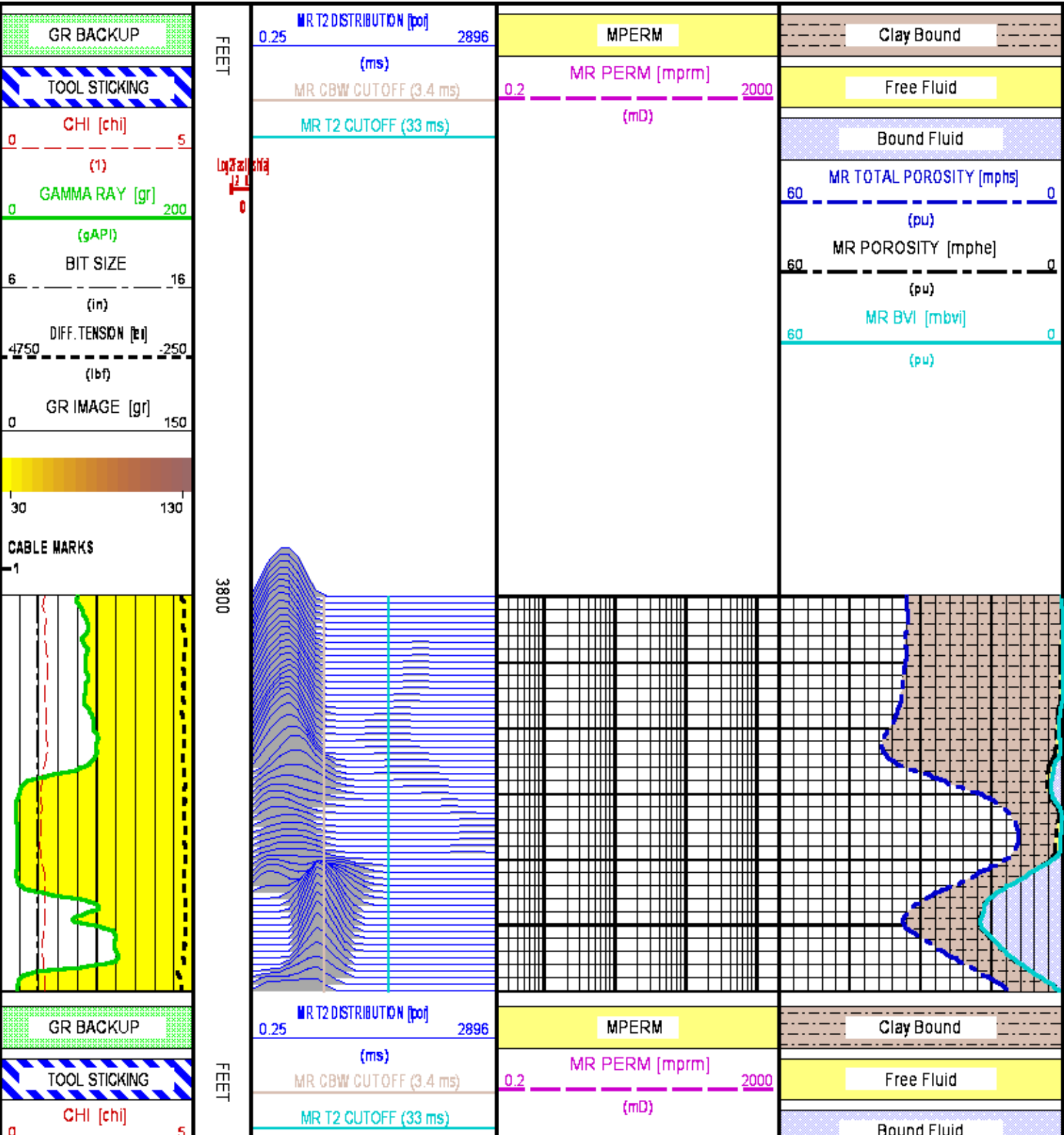
CURVE NAME	CREATION DATE	CURVE DESCRIPTION
F1:BIT	Mar 25 03:17:25 2014	BIT SIZE
F1:CHI	Mar 25 03:17:25 2014	GOODNESS OF FIT OF EACH ECHO DATA PACKET
F1:GR	Mar 25 03:17:25 2014	GAMMA RAY
F1:MBVI	Mar 25 03:17:25 2014	MR IRREDUCIBLE FLUIDS
F1:MMDCNT	Mar 25 03:17:25 2014	NUMBER OF MAGNETIC MARKS DETECTED
F1:MPHE	Mar 25 03:17:25 2014	MR EFFECTIVE POROSITY
F1:MPHS	Mar 25 03:17:25 2014	MR TOTAL POROSITY
F1:MPRM	Mar 25 03:17:25 2014	MR PERMEABILITY
F1:QSHFA	Mar 25 03:17:25 2014	QUALITY OF SHIFTED DATA OF 1ST T2
F1:TEN	Mar 25 03:17:25 2014	DIFFERENTIAL TENSION
F1:TPOR	Mar 25 03:17:25 2014	TOTAL POROSITY (CBW + T2 BIN ARRAY)

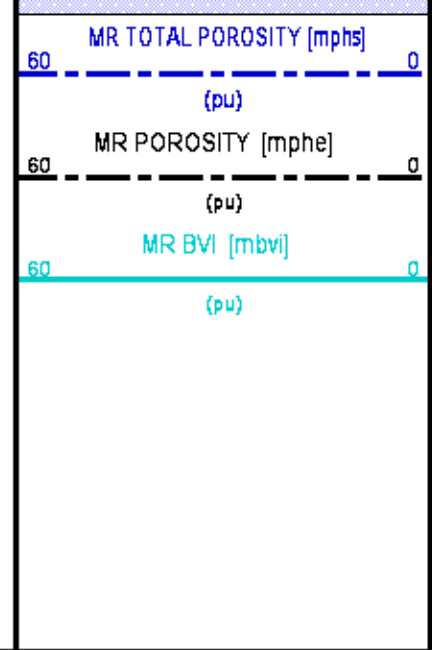
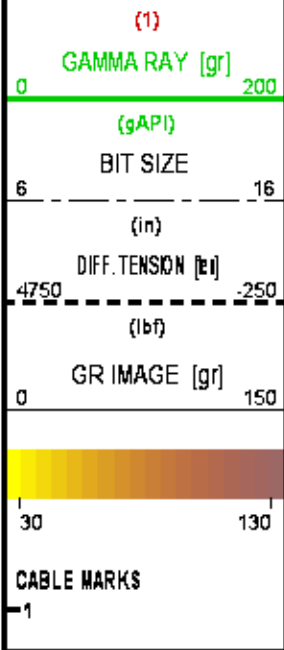
CURVE MEASURE POINT OFFSET

CURVE	OFFSET (ft)	CURVE	OFFSET (ft)	CURVE	OFFSET (ft)	CURVE	OFFSET (ft)
-------	-------------	-------	-------------	-------	-------------	-------	-------------

BIT	0.00	MBVI	5.00	MPRM	5.00	TPOR	5.00
CHI	5.00	MPHE	5.00	QSHFA	5.00		
GR	26.00	MPHS	5.00	TEN	0.00		

Presentation : cas6685:/dat1a/83295/MREX_1.fvpdf [5"/100' Scale]
Plot Interval : 3800 - 3860 Feet
Data File 1 : F1 : cas6685:/dat1a/83295/n857d01.aff
Created On : Mar 25 03:17:25 2014
Company : TRENDWELL ENERGY CORP
Well : SMITH 1-10
Field : WILDCAT
File Interval : 3737 - 3887.75 Feet
OCT : n857d





CALIBRATION / VERIFICATION SUMMARY

Source File: /dat1a/B3295/m857d.tp1

MREX_1FSWP PRIMARY CALIBRATION SUMMARY

TOOL #: 3218MB 843642 DATE/TIME PERFORMED: Wed Jan 29 17:46:13 2014

UNIT #: 3882TD HL669D

FREQ No.	1	2	3	4	5	6	7	8	9	10	11	12
PRIMARY kHz	503	580	590	627	653	697	736	776	819	873	926	979
Q ANT.	48.6	54.2	55.1	58.4	59.8	62.6	64.1	67.0	68.7	73.4	76.8	80.1
NOISE mV	3.0	4.4	3.8	4.3	3.9	3.5	3.9	4.5	55.3	5.1	5.8	6.2
CAL mV	281	342	376	421	449	499	542	598	652	756	861	922

MREX_1FSWP BEFORE LOG VERIFICATION SUMMARY

TOOL #: 3218MB 843642 DATE/TIME PERFORMED: Tue Mar 25 03:12:38 2014 DAYS SINCE CAL: 54

UNIT #: 3885TC 6685

FREQ No.	1	2	3	4	5	6	7	8	9	10	11	12
BEFORE kHz	502	559	590	626	652	696	735	774	818	872	925	977
Q	40.5	43.5	42.0	41.8	41.5	45.1	44.4	44.2	44.4	44.8	47.3	47.2
NOISE mV	3.3	3.8	4.2	4.0	5.0	4.5	4.5	5.1	5.9	7.1	8.3	8.9
CAL mV	213	253	271	291	306	337	351	382	408	446	511	523

MREX_1FSWP AFTER LOG VERIFICATION SUMMARY

TOOL #: 3218MB 843642 DATE/TIME PERFORMED: Tue Mar 25 07:48:48 2014 DAYS SINCE CAL: 54

UNIT #: 3885TC 6685

FREQ No.	1	2	3	4	5	6	7	8	9	10	11	12
AFTER kHz	502	558	589	626	651	696	734	774	817	871	924	976
	486 526	544 566	570 593	599 628	633 659	676 701	714 736	752 781	796 826	843 874	886 928	946 980
DELTA F %	-0.1	-0.1	-0.1	-0.1	-0.1	-0.1	-0.1	-0.1	-0.1	-0.1	-0.1	-0.2
	-1.0 1.0	-1.0 1.0	-1.0 1.0	-1.0 1.0	-1.0 1.0	-1.0 1.0	-1.0 1.0	-1.0 1.0	-1.0 1.0	-1.0 1.0	-1.0 1.0	-1.0 1.0
Q	43.0	43.5	45.6	44.2	45.1	47.2	48.0	48.7	48.7	51.1	52.7	51.6
	8.0 61.0	8.0 64.0	8.0 66.0	8.0 68.0	8.0 70.0	8.0 72.0	8.0 74.0	8.0 76.0	8.0 78.0	8.0 80.0	8.0 82.0	8.0 84.0
NOISE mV	3.3	4.0	4.3	4.4	4.4	5.1	5.0	5.4	6.2	7.2	7.8	9.2
	0.0 15.0	0.0 15.0	0.0 15.0	0.0 15.0	0.0 15.0	0.0 15.0	0.0 15.0	0.0 15.0	0.0 15.0	0.0 15.0	0.0 15.0	0.0 15.0
CAL mV	233	270	301	319	339	373	397	435	470	527	599	617

MREX_2TGN PRIMARY CALIBRATION SUMMARY

TOOL #: 3218MB 843642

DATE/TIME PERFORMED: Wed Jan 29 17:53:12 2014

UNIT #: 3882TD HL669D

FREQ No.	1	2	3	4	5	6	7	8	9	10	11	12
TX FREQ kHz	503	560	590	627	653	697	736	776	819	873	926	979
Vtx kV	1.05	1.14	1.15	1.18	1.21	1.20	1.22	1.22	1.24	1.21	1.19	1.12
	0.80 1.60	0.90 1.60	0.90 1.60	1.00 1.60	1.00 1.60	1.00 1.60	1.00 1.60	1.00 1.60	1.00 1.60	1.00 1.60	0.90 1.60	0.90 1.60
TAU 90 us	51.1	47.0	45.8	44.1	43.0	41.4	40.9	40.3	39.0	38.5	38.4	37.6
	43.0 59.0	39.0 54.0	38.0 53.0	36.0 50.0	35.0 49.0	34.0 48.0	33.0 47.0	32.0 46.0	32.0 46.0	32.0 46.0	31.0 45.0	30.0 44.0

MREX_3RGN PRIMARY CALIBRATION SUMMARY

TOOL #: 3218MB 843642

DATE/TIME PERFORMED: Wed Jan 29 17:57:31 2014

UNIT #: 3882TD HL669D

CAL TEMP
(degF)

62.0

FREQ No.	1	2	3	4	5	6	7	8	9	10	11	12
Gr	1.01	1.14	1.17	1.21	1.28	1.35	1.39	1.45	1.55	1.60	1.62	1.70
T2LM ms	113	111	110	111	111	110	110	111	110	111	110	108
	100 200	100 200	100 200	100 200	100 200	100 200	100 200	100 200	100 200	100 200	100 200	100 200

MREX_3RGN PRIMARY VERIFICATION SUMMARY

TOOL #: 3218MB 843642

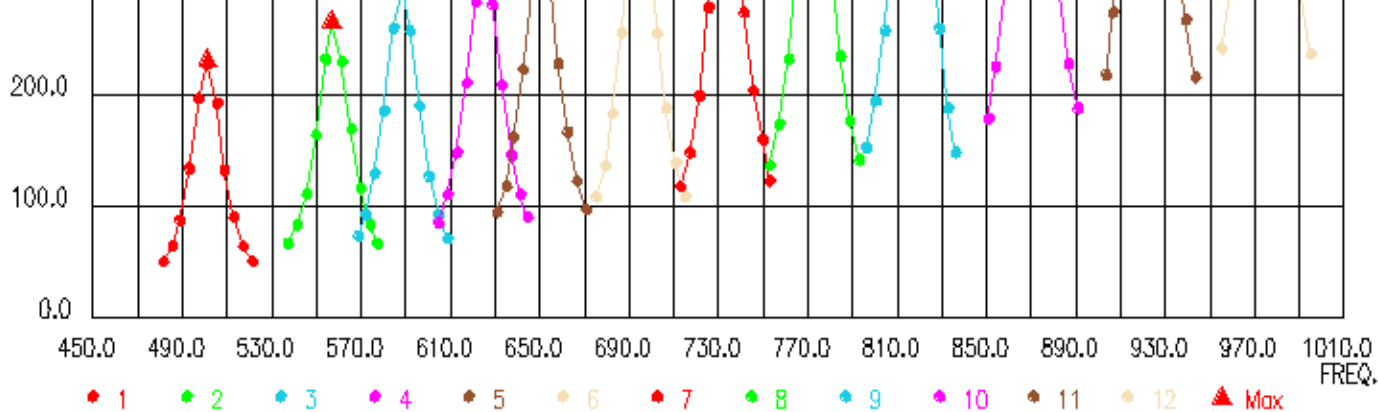
DATE/TIME PERFORMED: Wed Jan 29 18:04:29 2014

UNIT #: 3882TD HL669D

CAL TEMP
(degF)

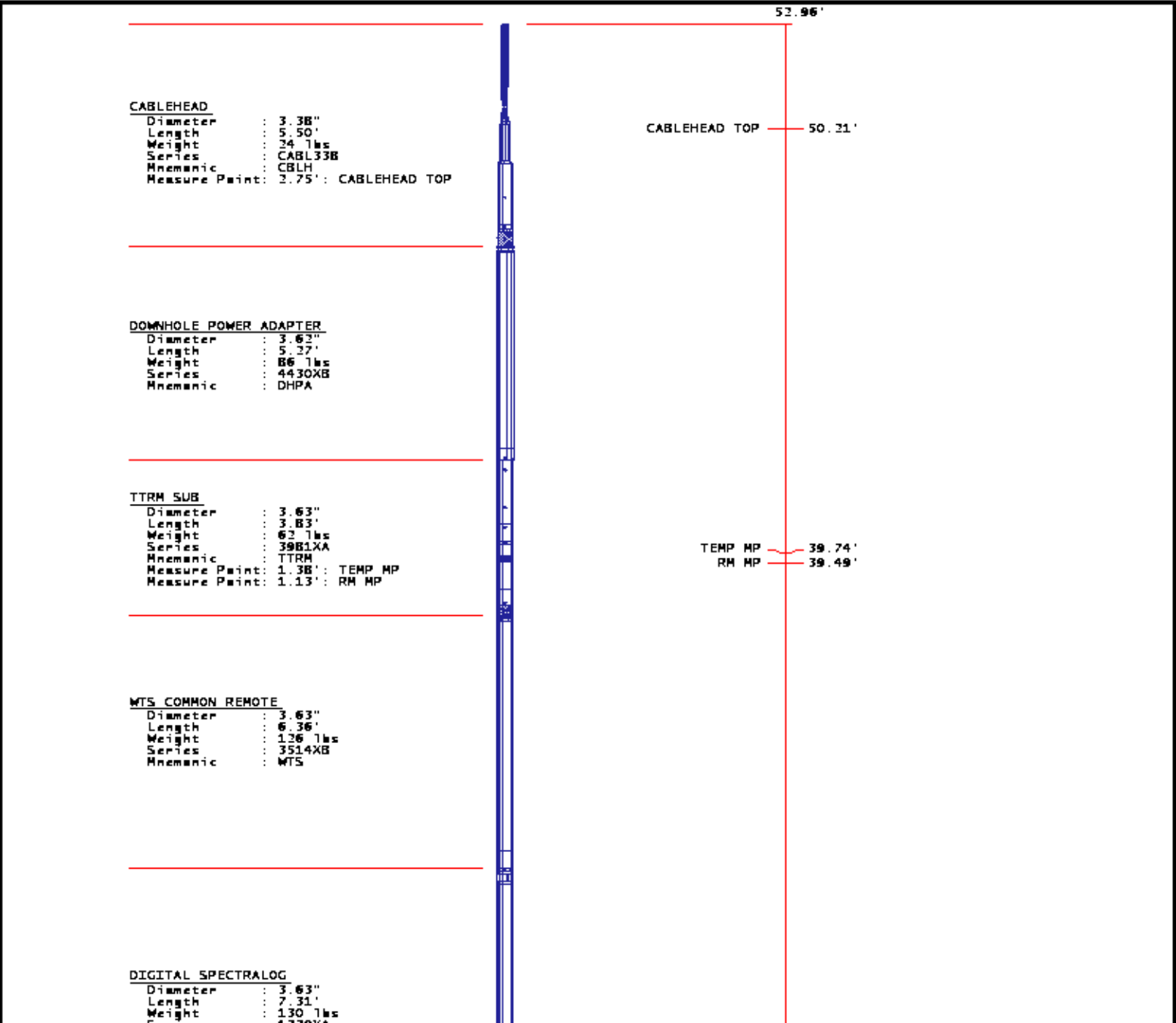
62.0

FREQ No.	1	2	3	4	5	6	7	8	9	10	11	12
TE ms	0.40											
POROSITY pu	100.2	100.3	100.3	100.0	100.4	100.3	99.7	100.2	100.7	100.3	99.9	100.0
	97.0 103.0	97.0 103.0	97.0 103.0	97.0 103.0	97.0 103.0	97.0 103.0	97.0 103.0	97.0 103.0	97.0 103.0	97.0 103.0	97.0 103.0	97.0 103.0
NOISE pu	5.19	5.23	4.13	4.19	4.20	3.79	4.39	4.93	3.06	2.75	2.69	2.89
	0.00 8.40	0.00 7.00	0.00 6.50	0.00 6.40	0.00 6.20	0.00 5.80	0.00 5.60	0.00 5.10	0.00 4.80	0.00 4.50	0.00 4.50	0.00 4.30
RINGING pu	9.9	6.8	3.5	9.9	2.1	6.9	5.7	2.1	4.9	2.7	2.4	1.7
	0.0 30.0	0.0 30.0	0.0 30.0	0.0 30.0	0.0 30.0	0.0 30.0	0.0 30.0	0.0 30.0	0.0 30.0	0.0 30.0	0.0 30.0	0.0 30.0
TE ms	0.30											
POR2 pu	102.4	98.3	96.7	96.9	100.3	100.9	100.6	100.9	101.1	100.3	100.2	100.0
NOISE pu	5.06	5.22	4.24	4.22	4.27	4.11	5.06	4.93	3.27	2.75	2.67	4.07



INSTRUMENT CONFIGURATION

Source File: /dat1a/B3295/MREX-tdg



Series : 1329AA
 Mnemonic : DSL
 Measure Point: 1.60' : GR MP

GR MP 36.28'

MREX CAPACITOR CHARGER SUB

Diameter : 3.62"
 Length : 8.90'
 Weight : 176 lbs
 Series : 331BQA
 Mnemonic : MREX

MREX ELECTRONICS

Diameter : 5.00"
 Length : 6.95'
 Weight : 178 lbs
 Series : 331BEB
 Mnemonic : MREX

MREX MAGNET

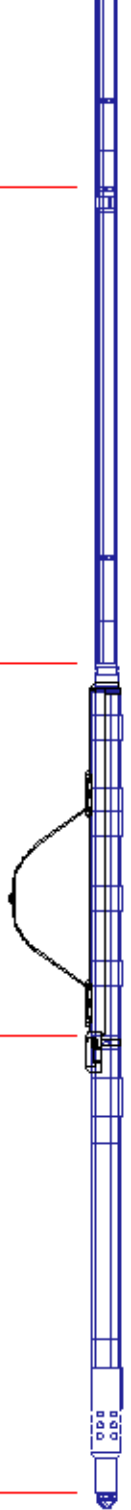
Diameter : 5.00"
 Length : 8.56'
 Weight : 310 lbs
 Series : 331BMB
 Mnemonic : MREX
 Measure Point: 4.93' : ANTENNA

ANTENNA 5.22'

BULL PLUG 3 3/8

0.00'

TOTAL LENGTH: 52.96'
 TOTAL WEIGHT: 1109 lbs
 MAX DIAMETER: 0'5.00"



COMPANY TRENDWELL ENERGY CORP
 WELL SMITH 1-10
 FIELD WILDCAT
 COUNTY CANYON STATE IDAHO

FILE NO: 83296
 API NO: 11-027-20003

LOCATION:
 SHL: 3300' FSL & 1820' FEL
 SEC 10 TWP 5N RGE 4W

ELEVATIONS:
 KB 2449 FT
 DF
 GL 2437 FT
 DATE 24-MAR-2014

