



RADIAL ANALYSIS BOND LOG

File No: 88001
Company: TRENDWELL WEST INC.
Well: SMITH 1-10
API No.: 1182700000000
Field: WILDCAT
County: CANYON
State: IDAHO

Location:
 SEC: 10 TWP: 6N RGE: 1E
 Other Services: PERP

Permanent Datum: GROUND LEVEL Elevation: 2437 ft
Log Measured From: K.B. 12 ft Above P. D.
Drill Measured From: KELLY BURRING
 Elevations: KB 2448 ft, DF 2448 ft, GL 2437 ft

Date	02-JUN-2014	02-JUN-2014
Run	ONE	TWO
Service Order	88001	88001
Depth Driller	4053 ft	4053 ft
Depth Logger	4050 ft	4050 ft
Bottom Logged Interval	4050 ft	4050 ft
Top Logged Interval	SURFACE	SURFACE
Time Started	11:00	13:30
Time Finished	13:30	18:00
Operator Rig Time	2.6 HRB	2.6 HRB
Type of Fluid in Hole	WATER	WATER
Fluid Density	N/A	N/A
Fluid Salinity	N/A	N/A
Fluid Level	FULL	FULL
Logged Cement Top	N/A	N/A
Wellhead Pressure	0 psi	760 psi
Maxi mum Hole Deviation	N/A	N/A
Nominal Logging Speed	66 fpm	66 fpm
Maxi mum Recorded Temperature	214 deg F	214 deg F
Reference Log	BAKER HUGHES-DL-ZOL-QN-QR	BAKER HUGHES-DL-ZOL-QN-QR
Reference Log Date	24-MAR-2014	02/JUN/14
Equipment	4255	4255
Recorded By	TIM KAUTT	TIM KAUTT
Witnessed By	MR. EARL BRINTZENHOFF	MR. EARL BRINTZENHOFF

In making interpretations of logs, our employees will give the customer the benefit of their best judgement. But since all interpretations are opinions based on inferences from electrical or other measurements, we cannot, and we do not guarantee the accuracy or correctness of any interpretation. We shall not be liable or responsible for any loss, cost, damages, or expenses whatsoever incurred or sustained by the customer resulting from any interpretation made by any of our employees.

Borehole Record		
Bit Size	From	To

Casing Record				
Size	Weight	Grade	From	To
5.5 in	15.5 lbm/ft	J-55	SURFACE	4053 ft

Remarks

This log is correlated to the Baker Hughes open hole log dated 24-mar-14.
 BHT recorded was 214°
 DW Tool recorded @2366'
 This log is ran with 750# psi on well as per customers request.
 The crew of 4255 Thanks You.

Equipment Data

Run	Trip	Tool	Series Number	Serial Number	Position
1	1	MANDREL	1426XA	10417451	CENTRALIZED
1	1	GAMMA RAYTEMP	1355XA	11871509	CENTRALIZED

MAIN SECTION

750# psi

MEASUREMENT TYPE	PARAMETER	VALUE	UNITS	TOP	BOTTOM
RAL	Amp Gate Start Far	332.187	usec	14.227	4058.000
RAL	Amp Gate Start Near	215.678	usec	14.227	4058.000
RAL	Amp Gate Start Radial	215.678	usec	14.227	4058.000
RAL	Amp Gate Width Far	25.000	usec	14.227	4058.000
RAL	Amp Gate Width Near	25.000	usec	14.227	4058.000
RAL	Amp Gate Width Radial	25.000	usec	14.227	4058.000
RAL	casing od	5.500	inches	14.227	4058.000
RAL	casing wt	15.500	lbm/ft	14.227	4058.000
RAL	FB Start Far	307.187	usec	14.227	4058.000
RAL	FB Start Near	190.678	usec	14.227	4058.000
RAL	FB Start Radial	190.678	usec	14.227	4058.000
RAL	FB Thresh Far	10.000	mv	14.227	4058.000
RAL	FB Thresh Near	4.000	mv	14.227	4058.000
RAL	FB Thresh Radial	4.000	mv	14.227	4058.000
RAL	Fluid Travel Time	200.000	Usecc/ft	14.227	4057.809

DEPTH OFFSETS

(for Acquired Curves)

SERIES	DEPTH OFFSET	ACQUIRED CURVES
1426XA	-14.000	ACAL ANR AR1 AR2 AR3 AR4 AR5 AR6 AR7 AR8 CHV FPR2 FPR3 FPR5 TT3 TTR1 TTR2 TTR3 TTR4 TTR5 TTR6 TTR7 TTR8 XAMP
1426XA	-13.040	AFAR SIG TT5
1355XA	-5.620	CCL
1355XA	-1.500	GR

Created by : RAL, v4.8.008

Plotted by : PlotMgr, v5.4.504

Company : TRENDWELL WEST INC.

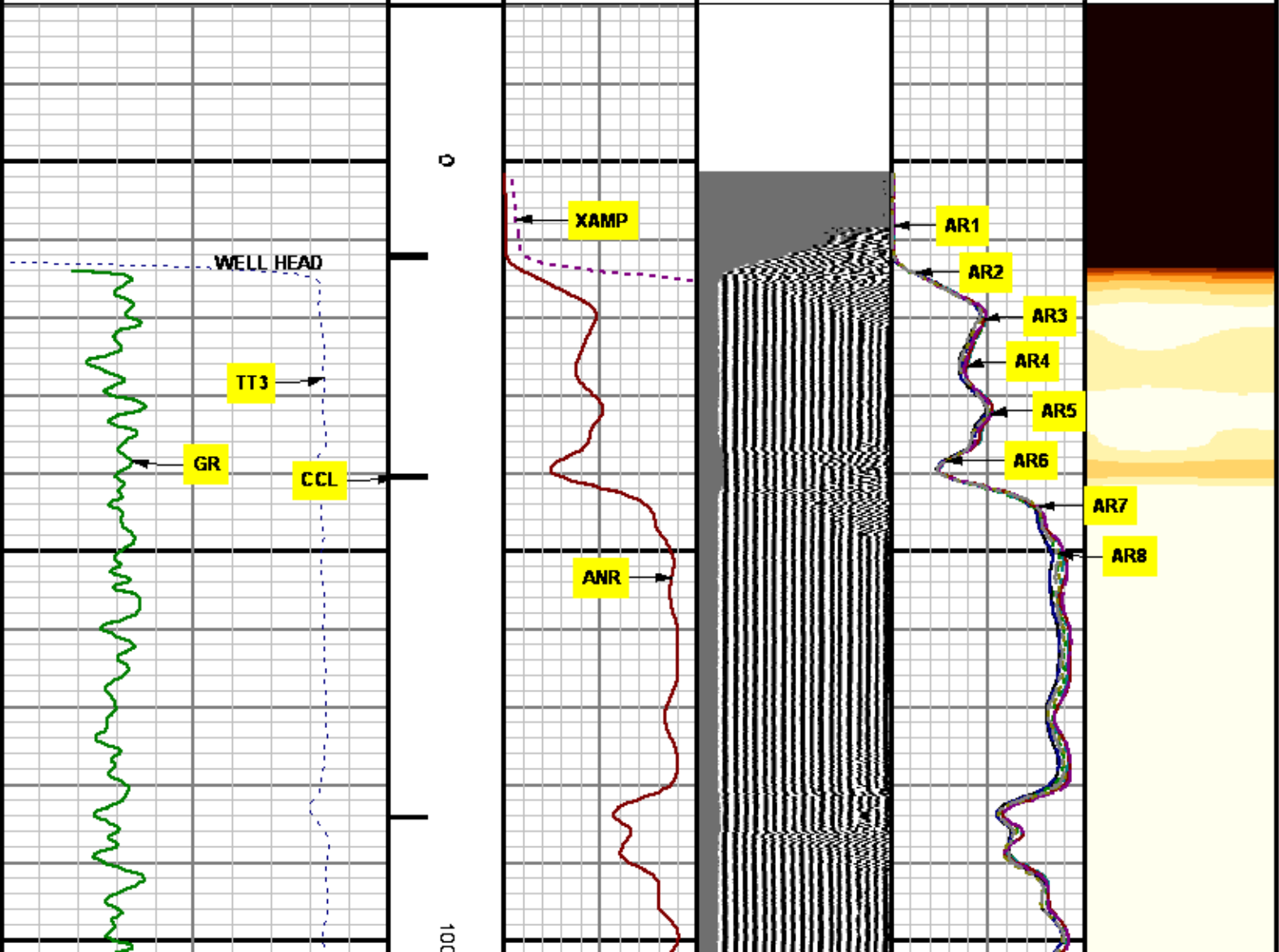
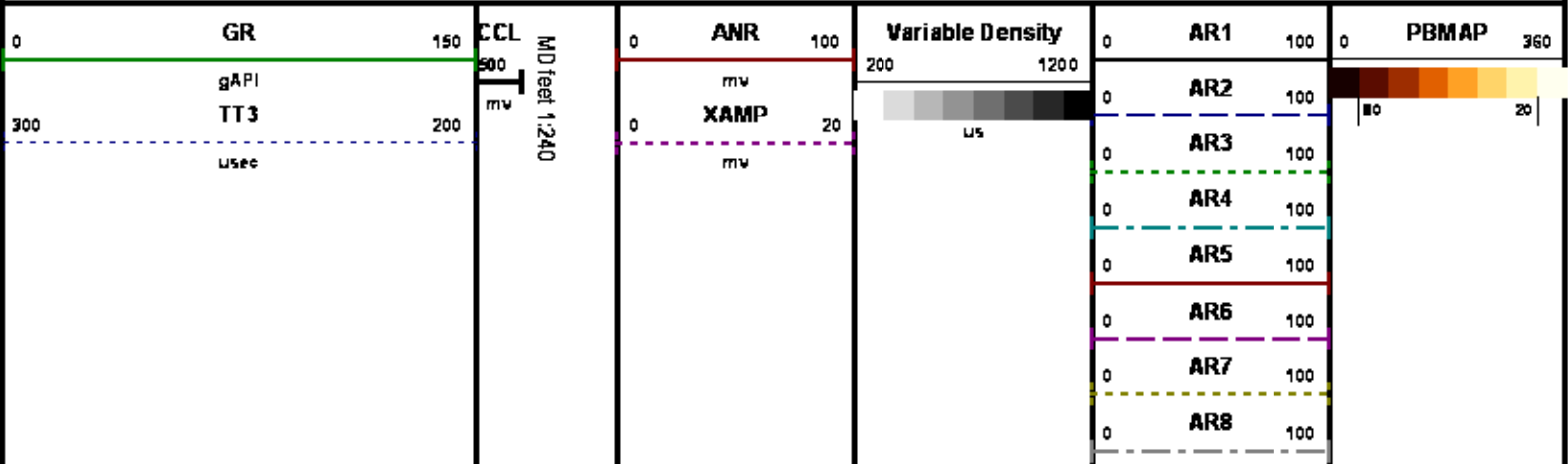
Well : SMITH 1-10

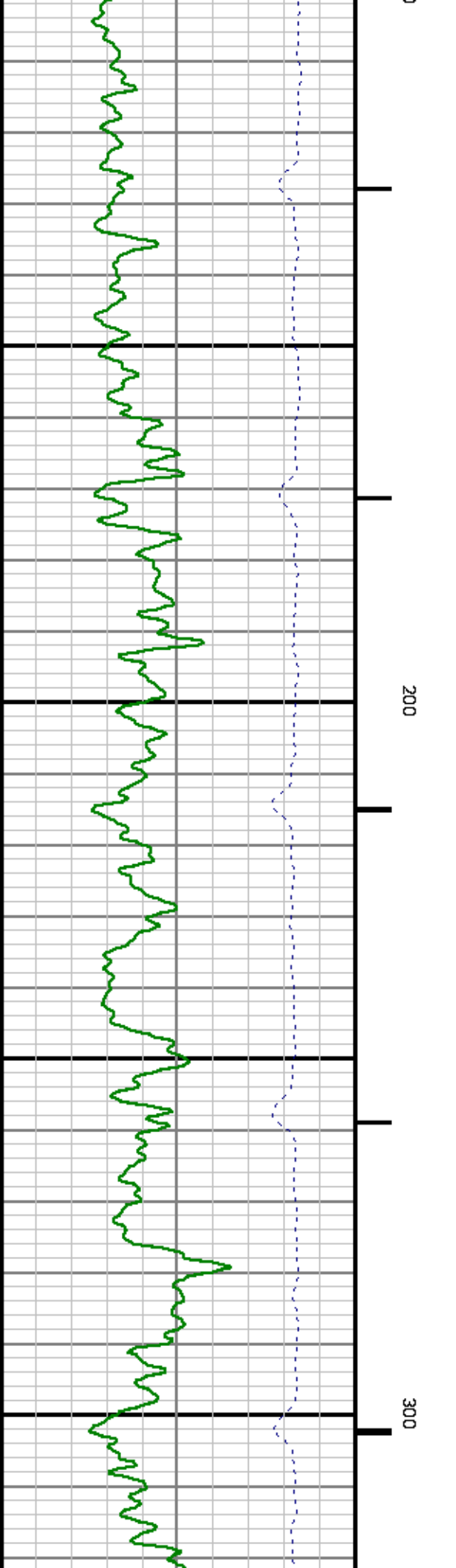
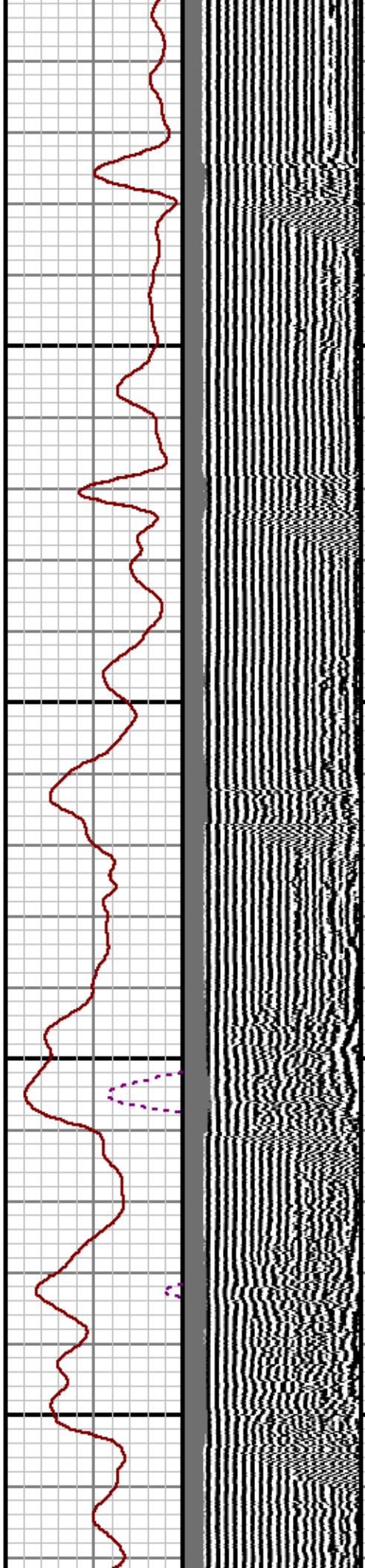
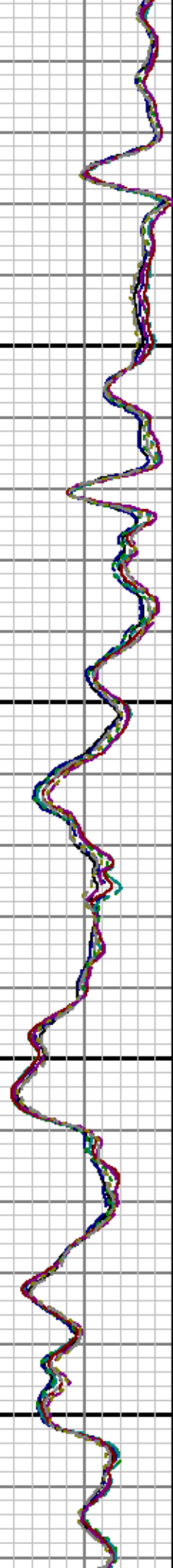
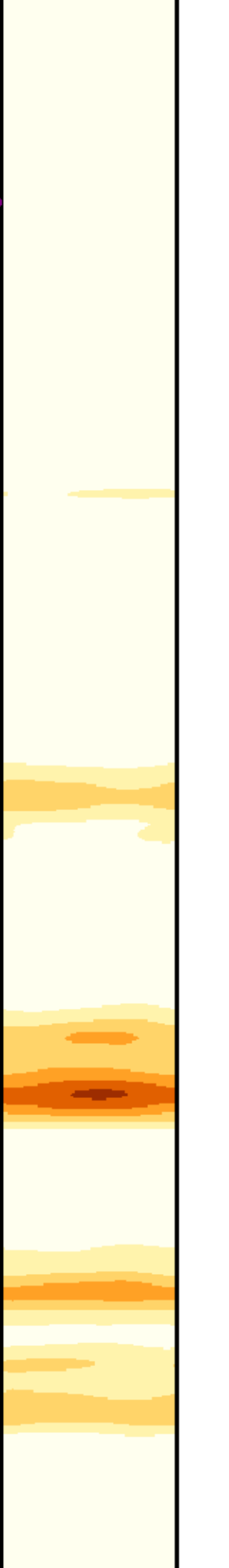
File Name : c:\well\data\10rad\main2.xtf

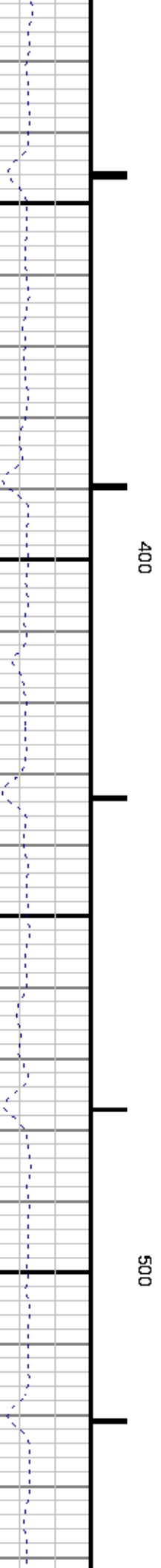
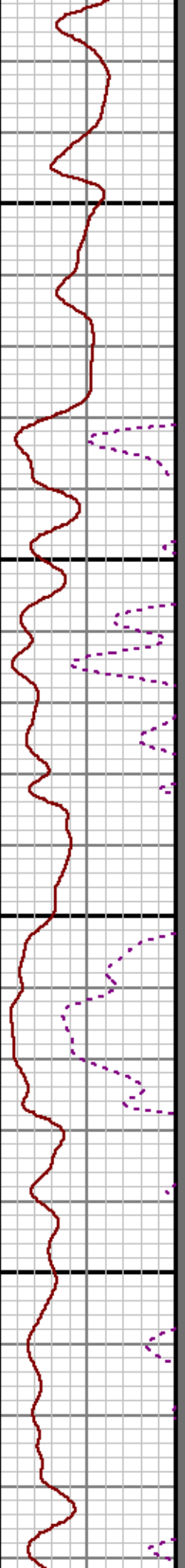
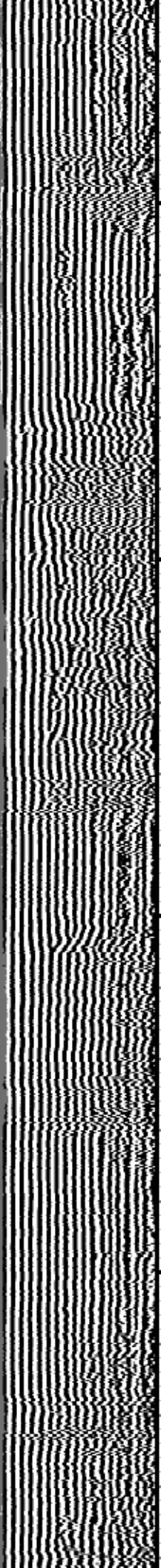
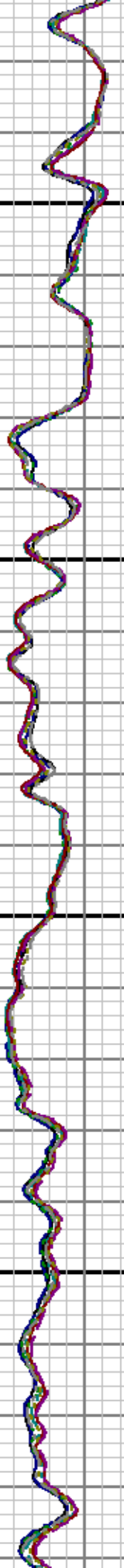
Mode : PlotMgr 5.4.504

Interval : -20.00 - 4058.00 feet UP

Created : 6/2/2014 4:10:40 PM

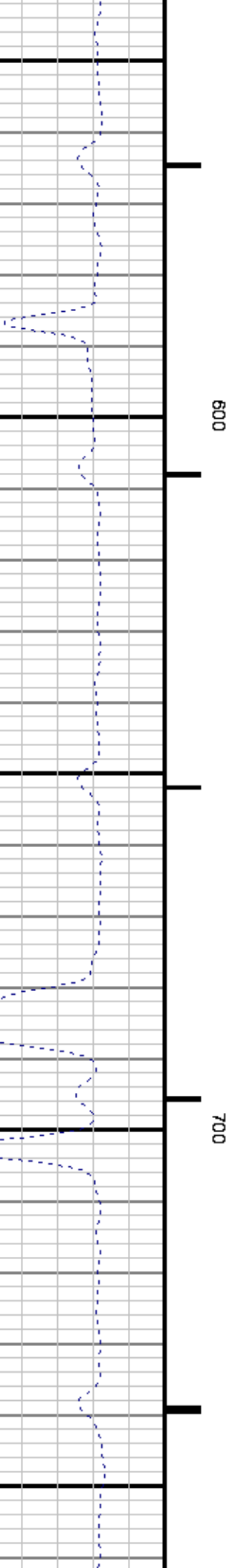
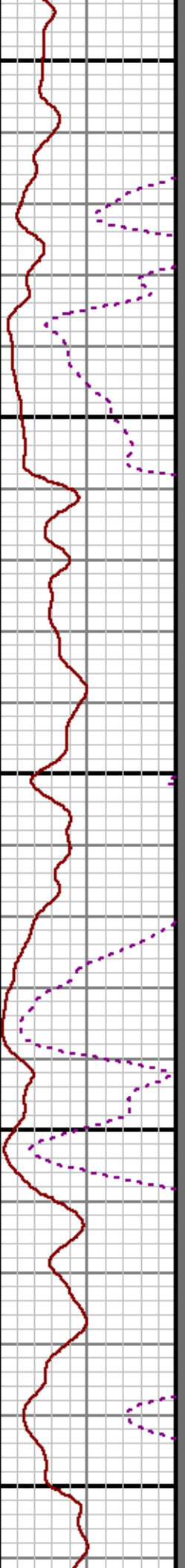
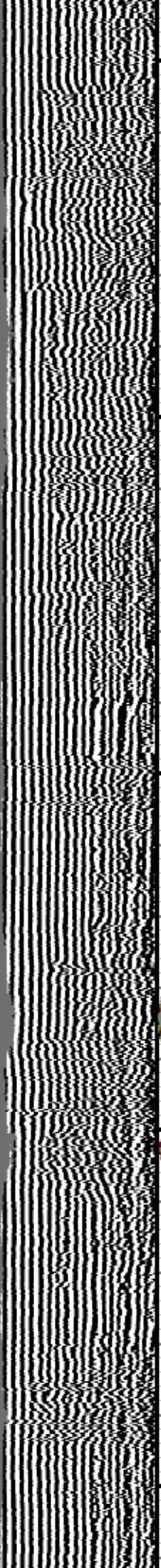
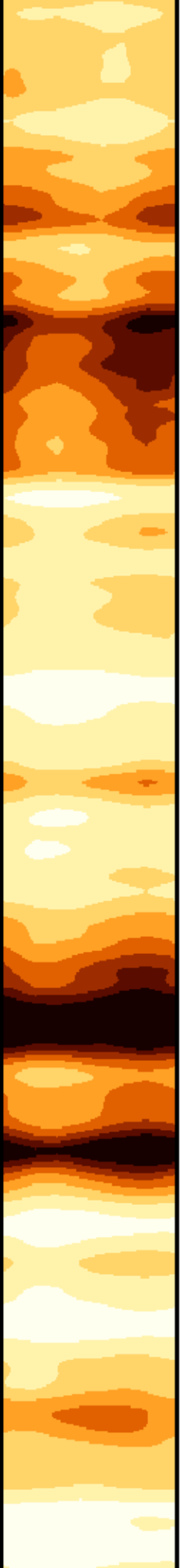






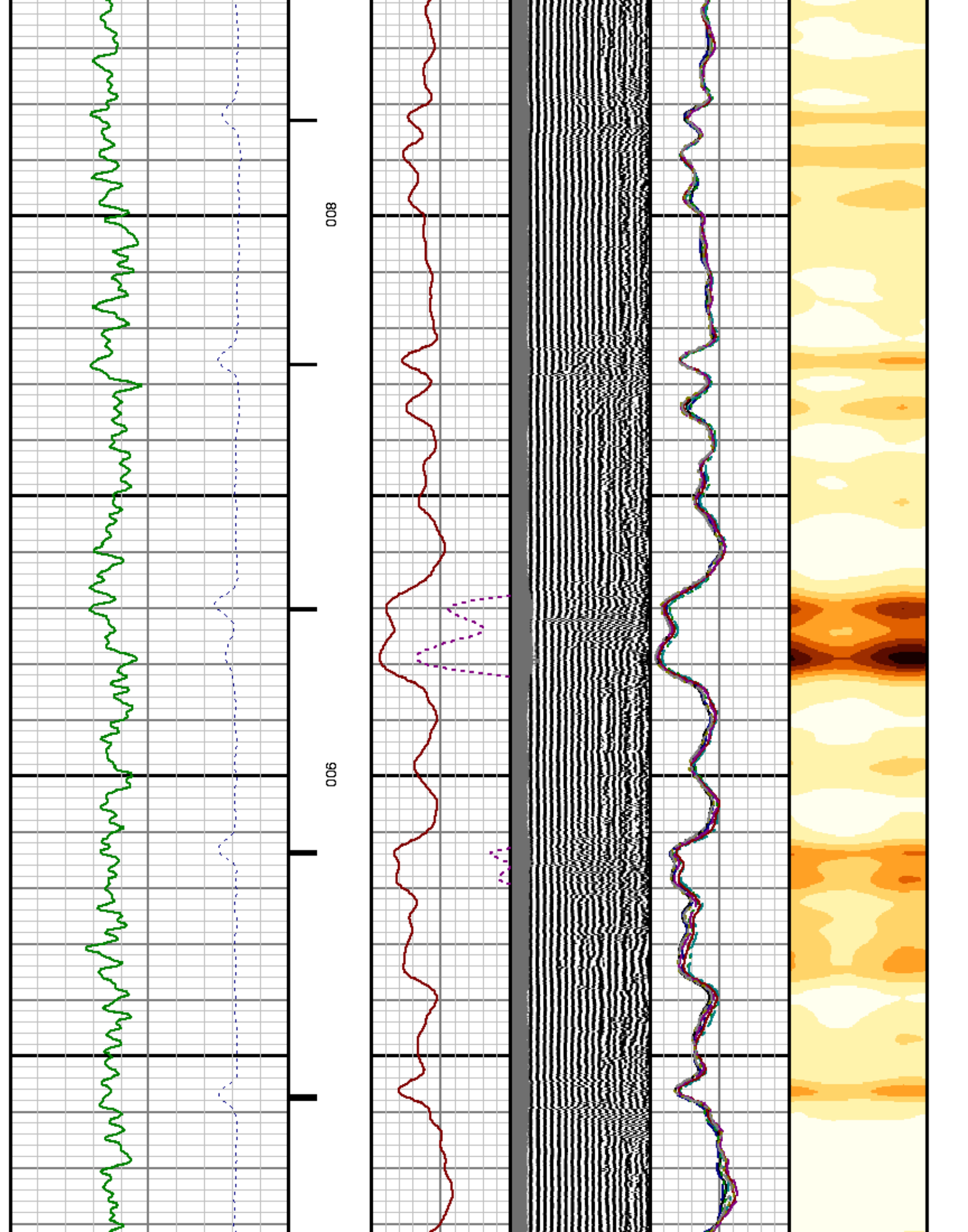
400

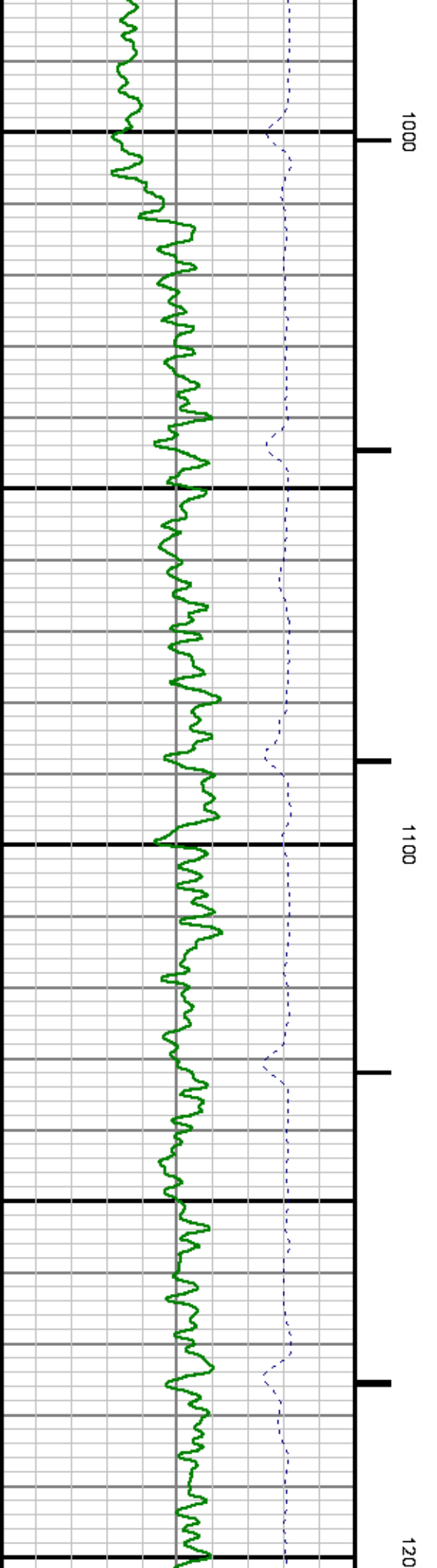
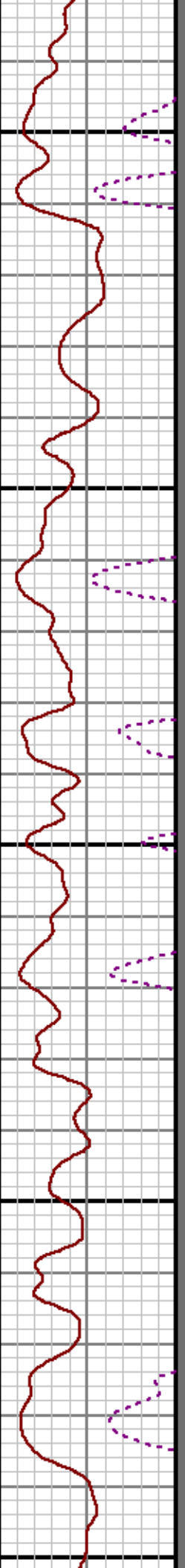
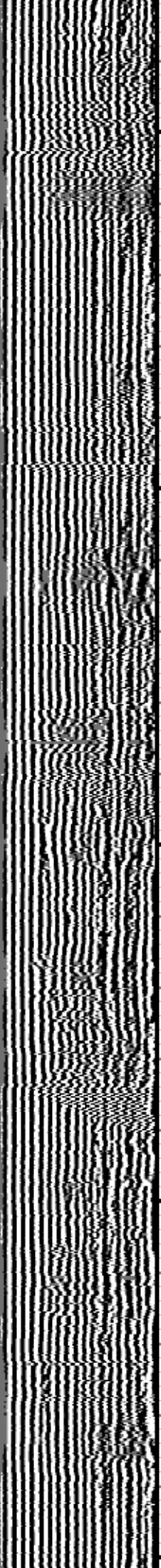
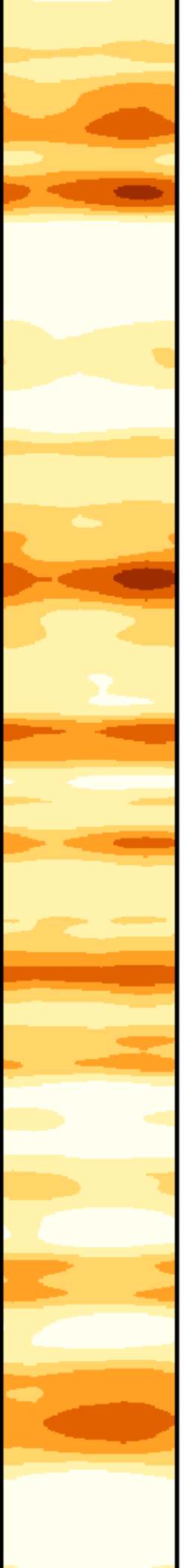
500

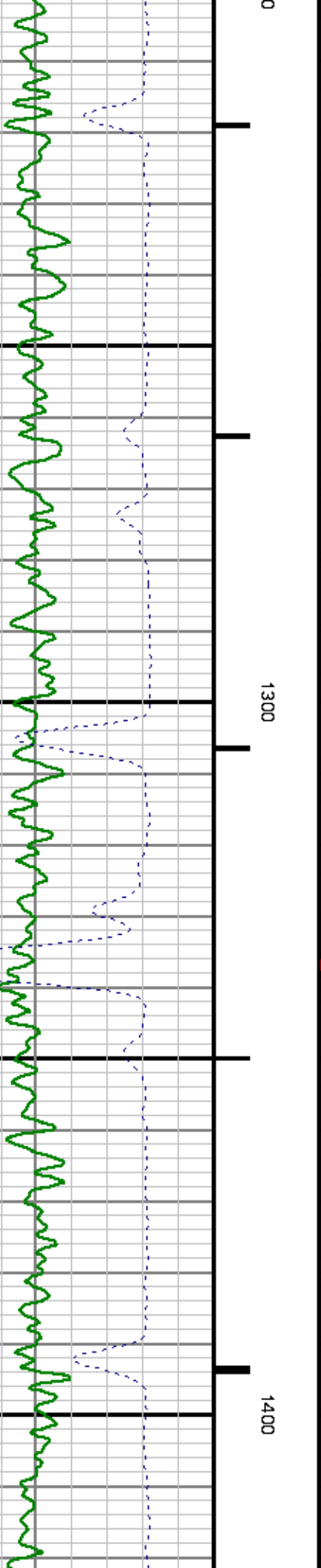
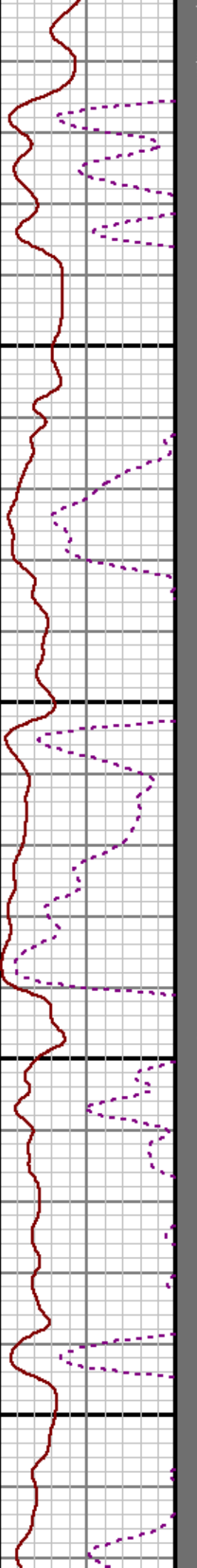
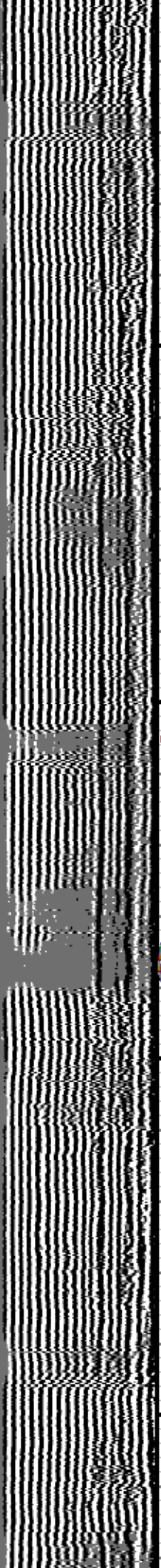
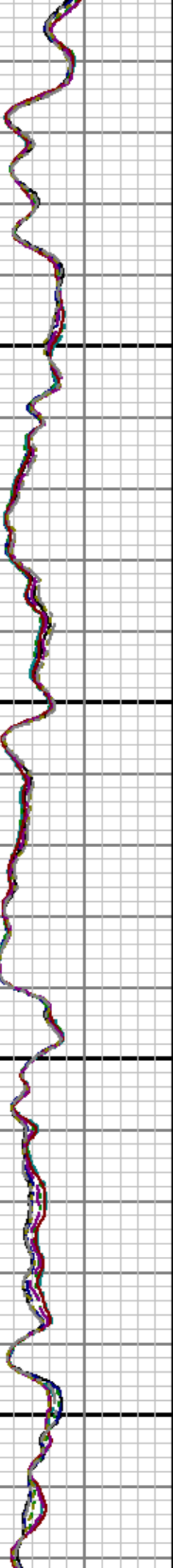


600

700



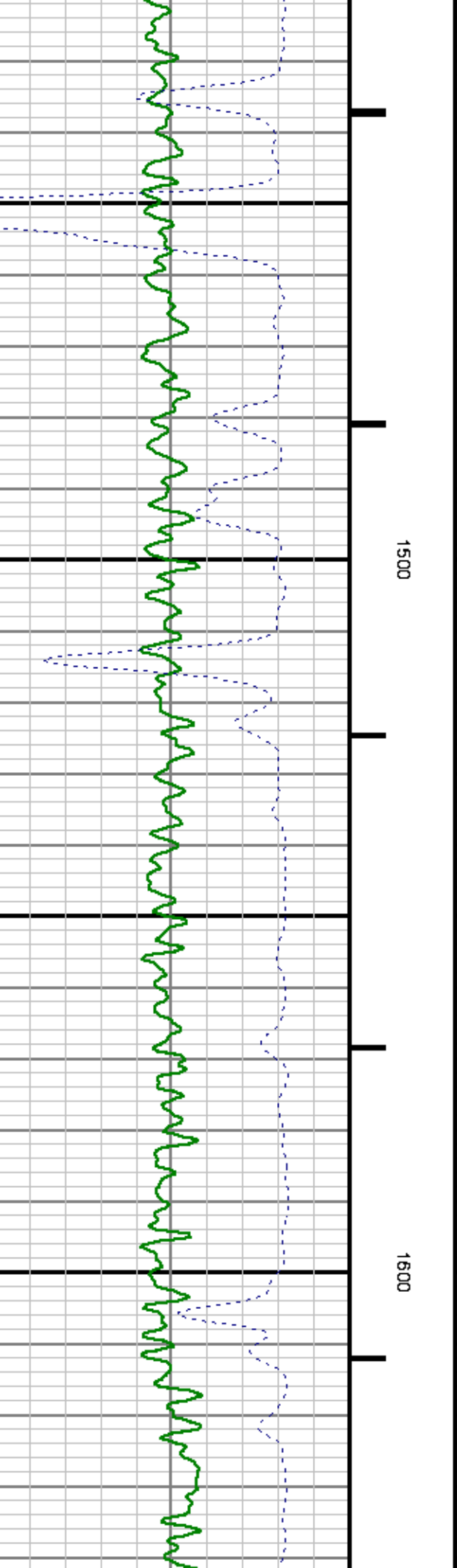
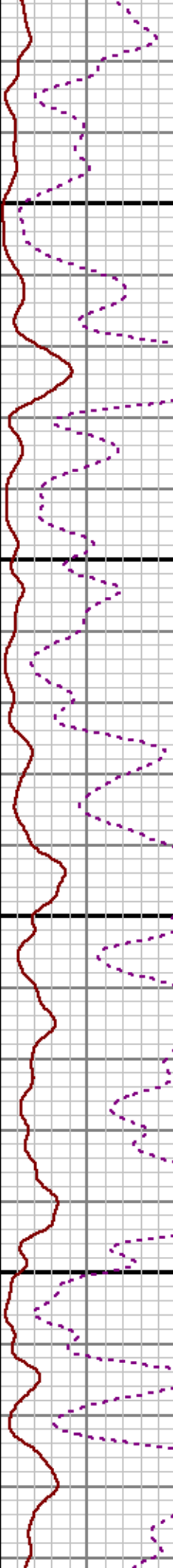
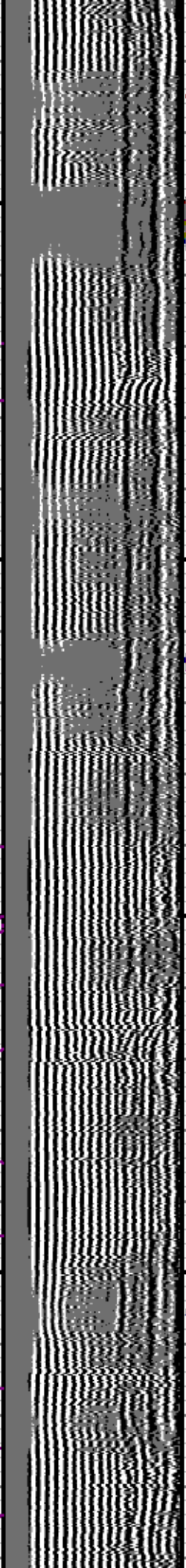
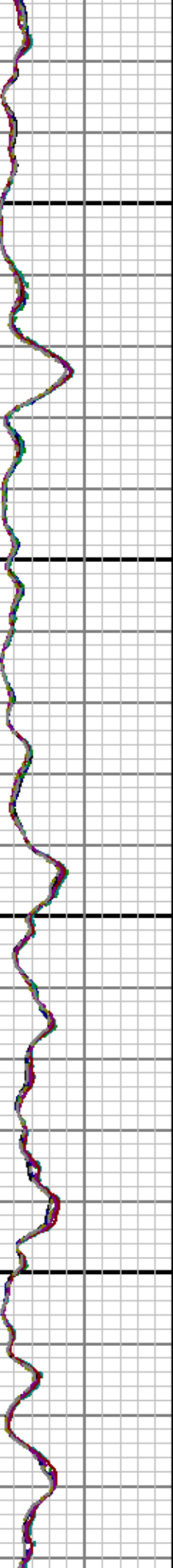


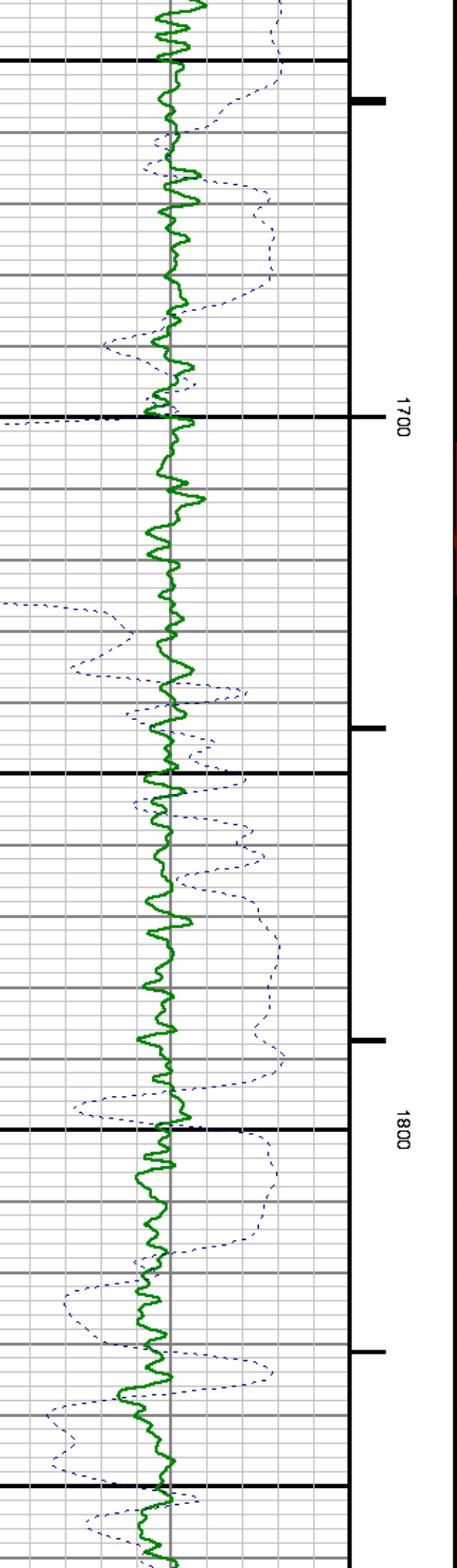
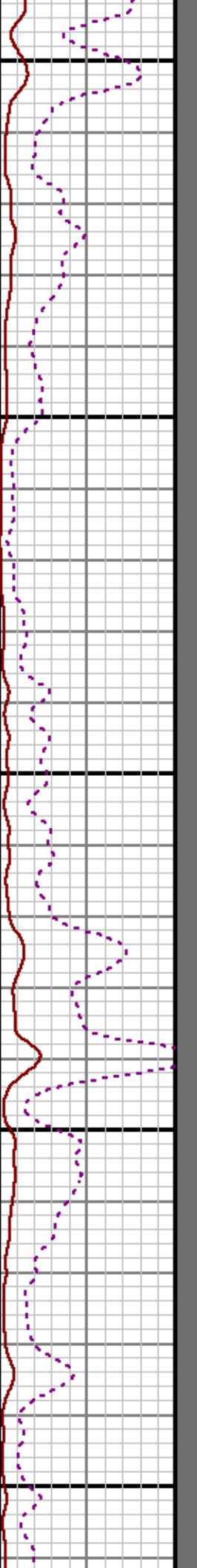
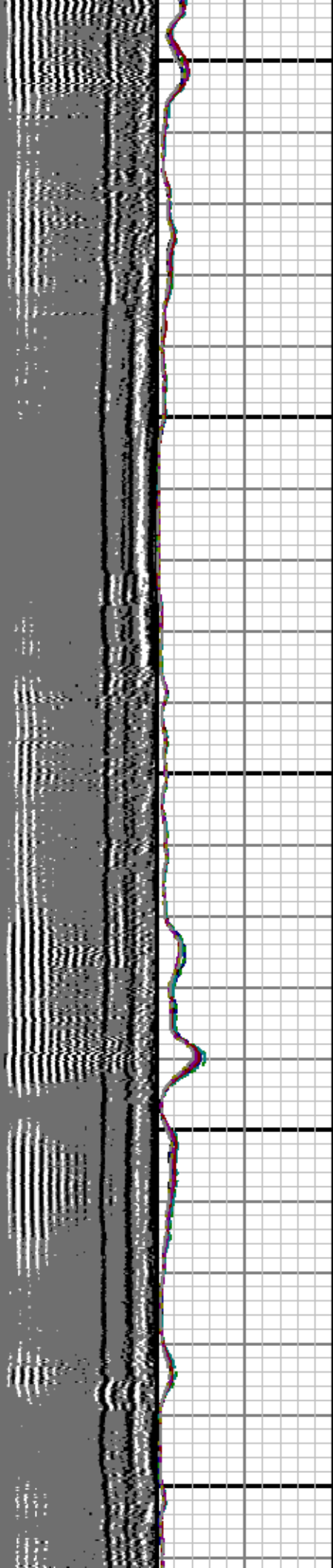
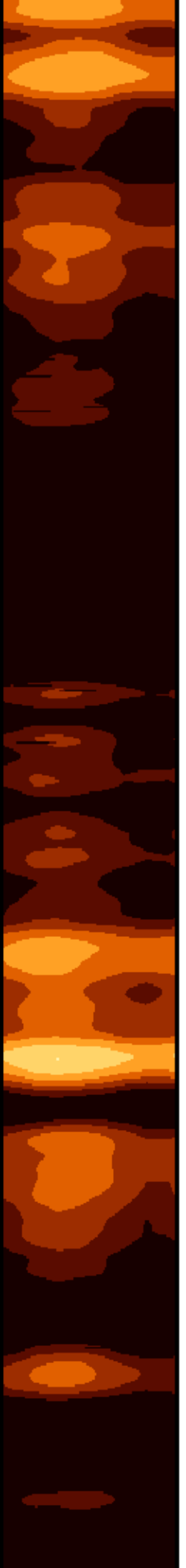


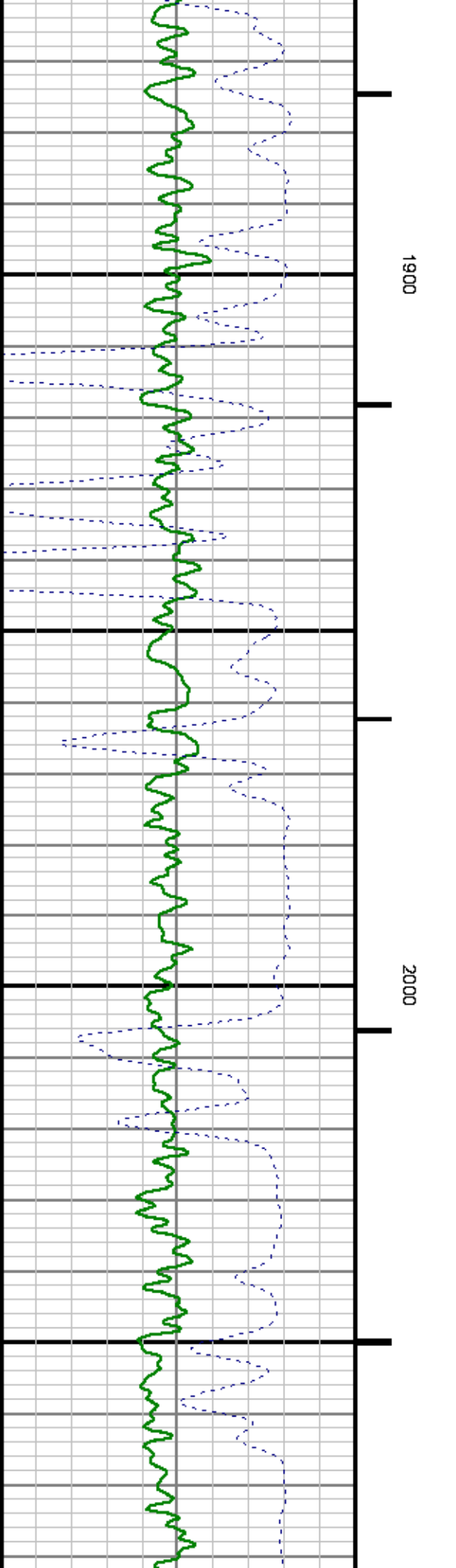
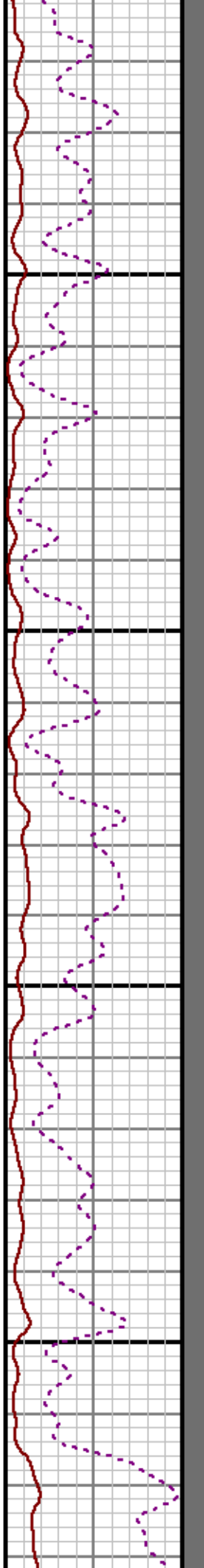
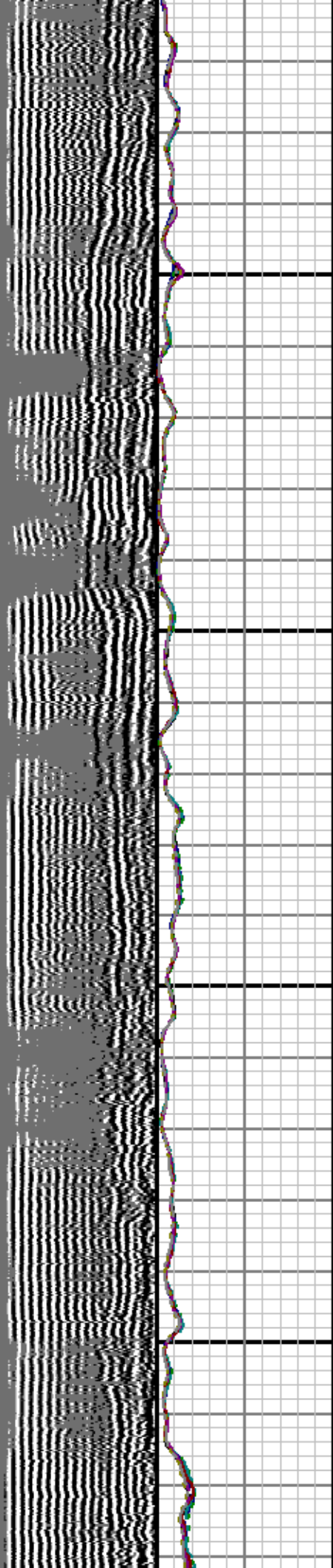
1300

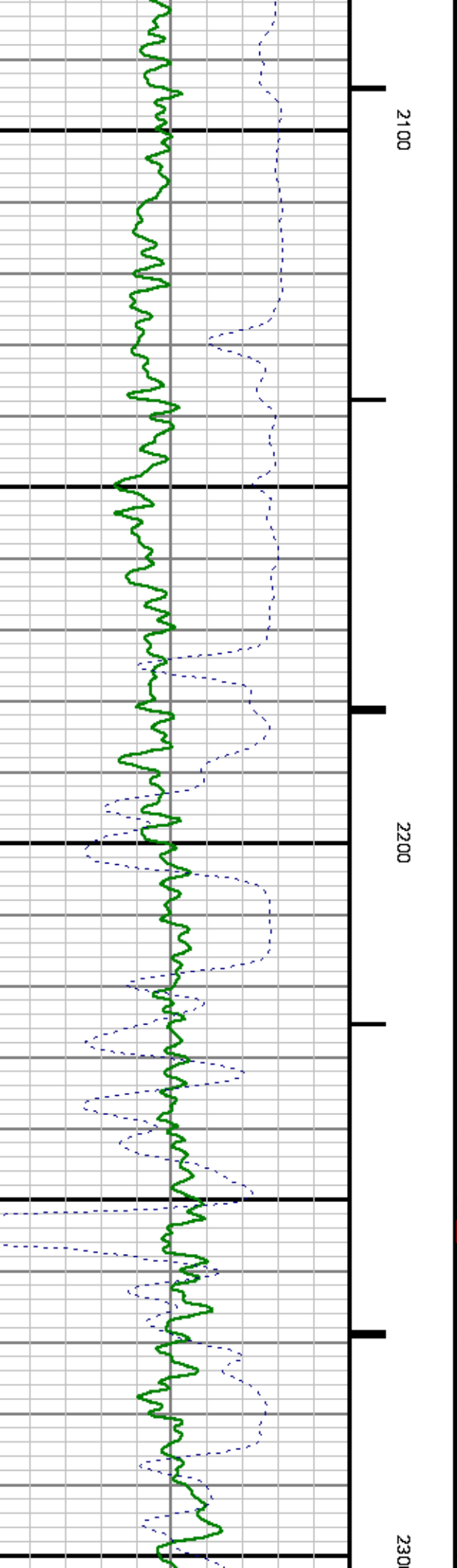
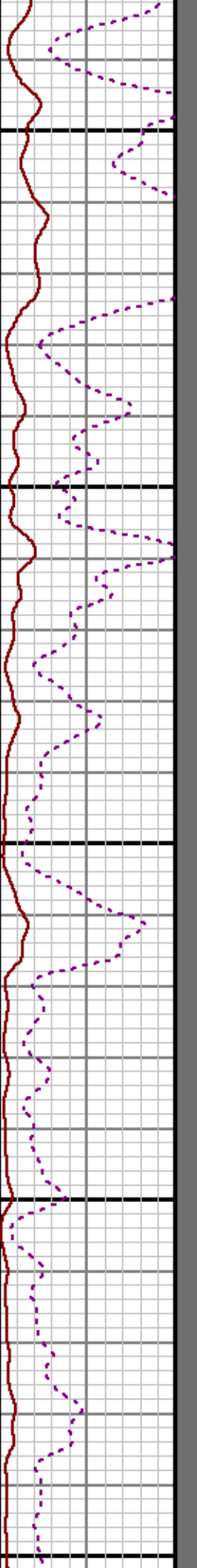
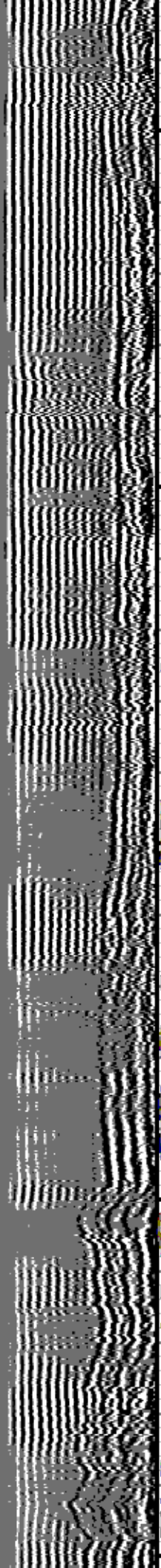
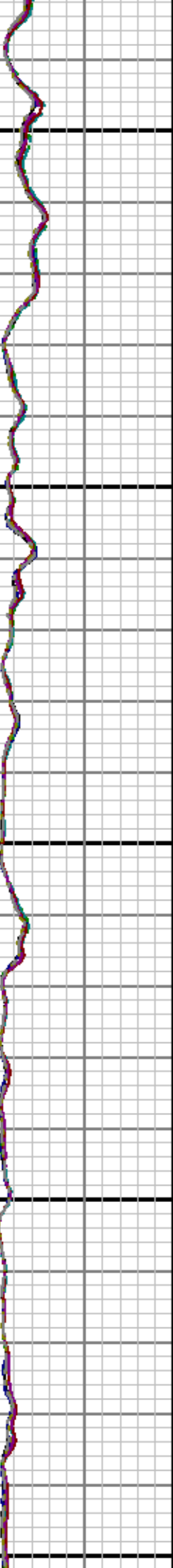
1400

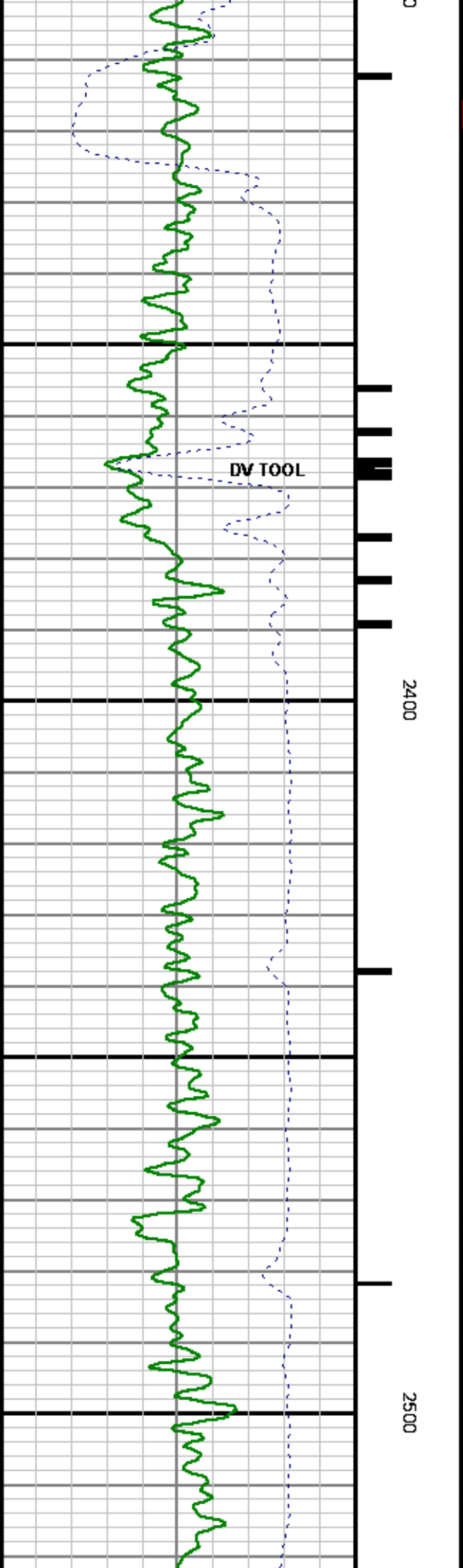
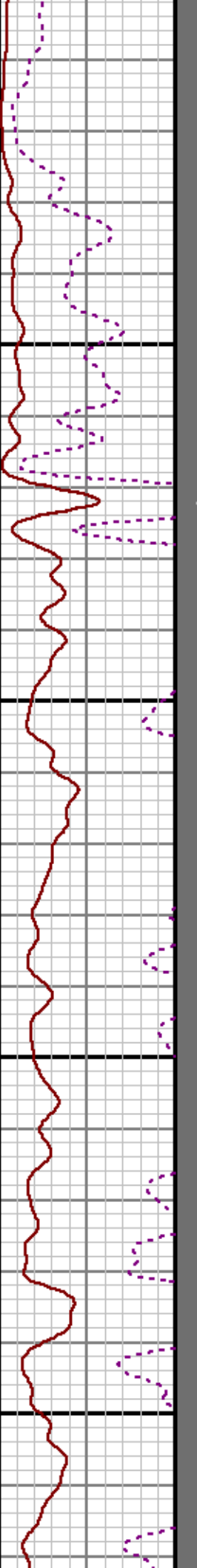
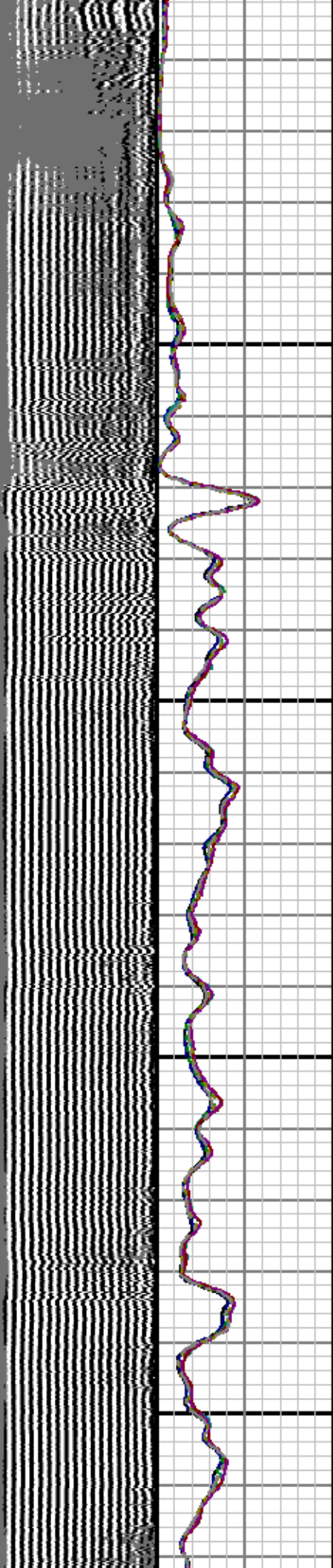
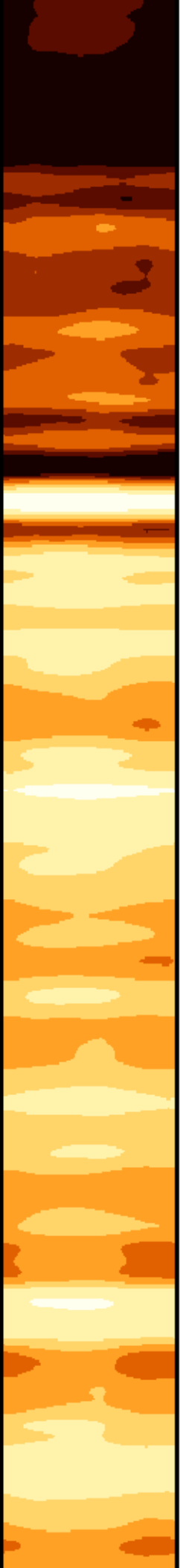
0

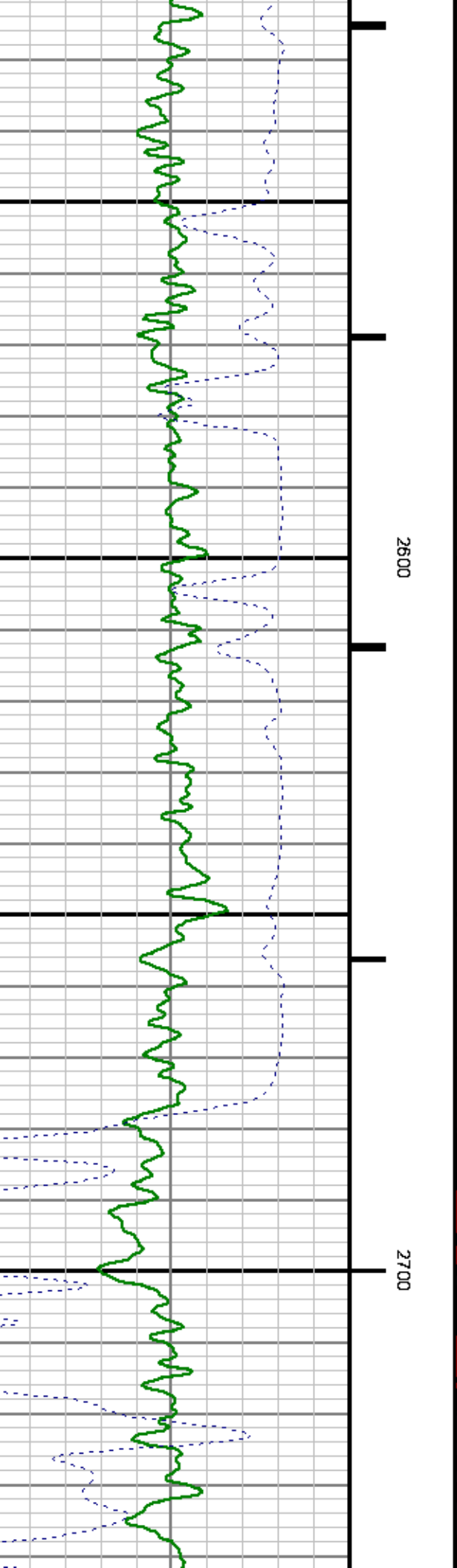
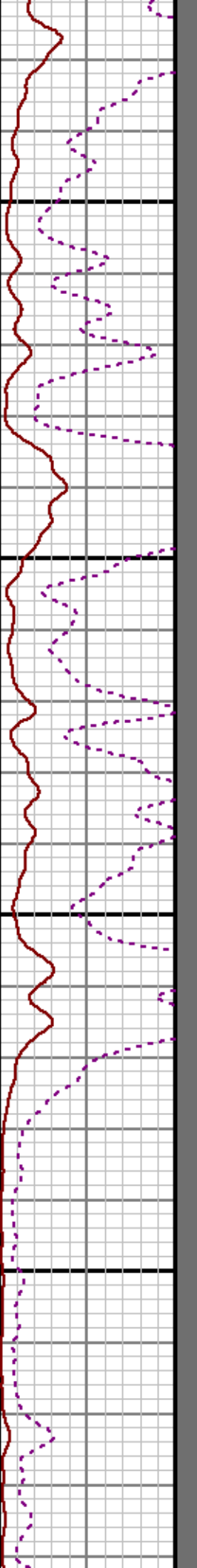
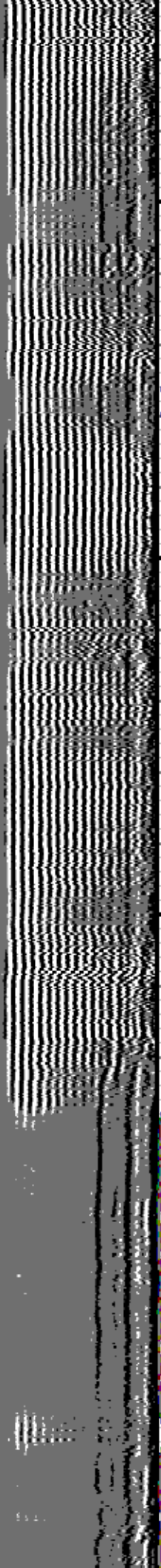
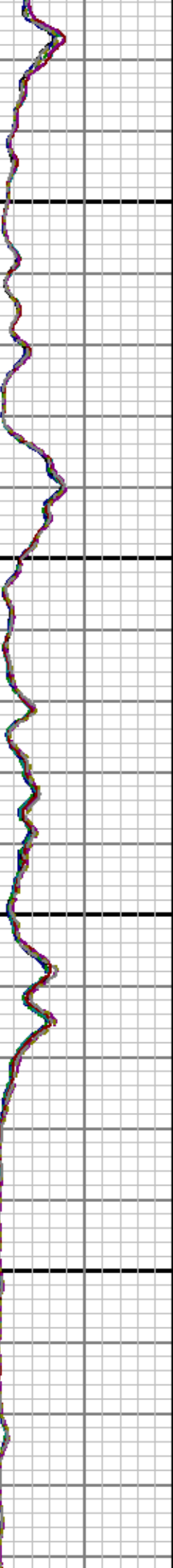


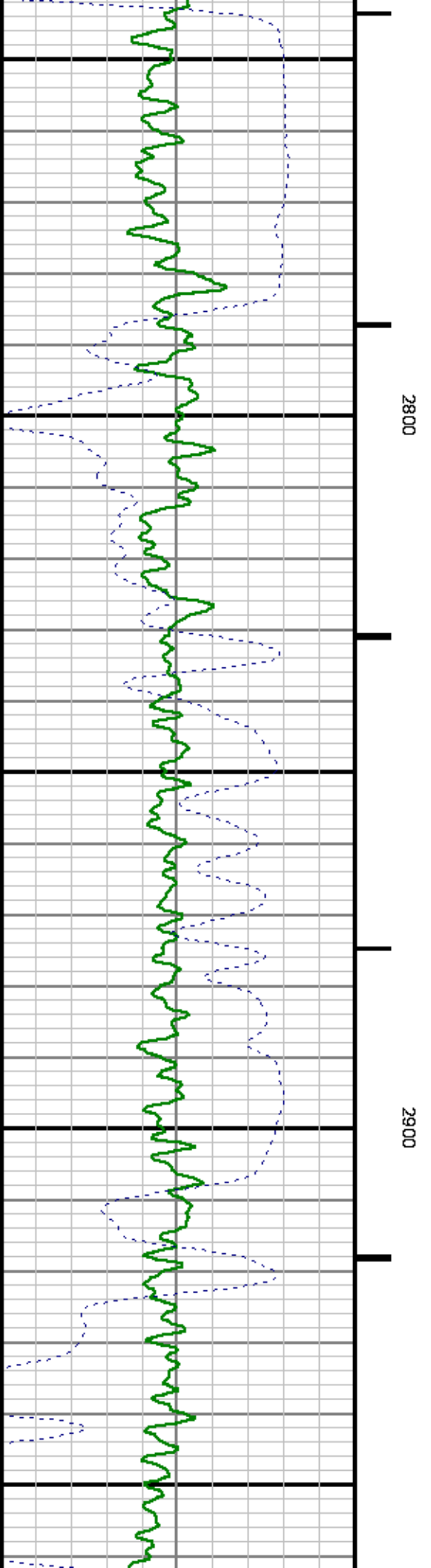
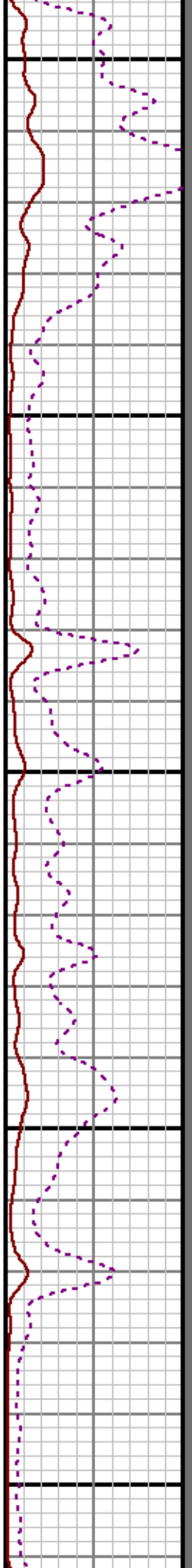
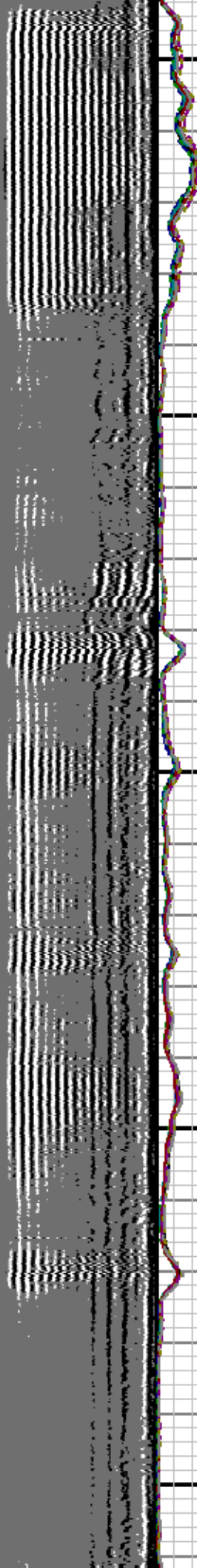
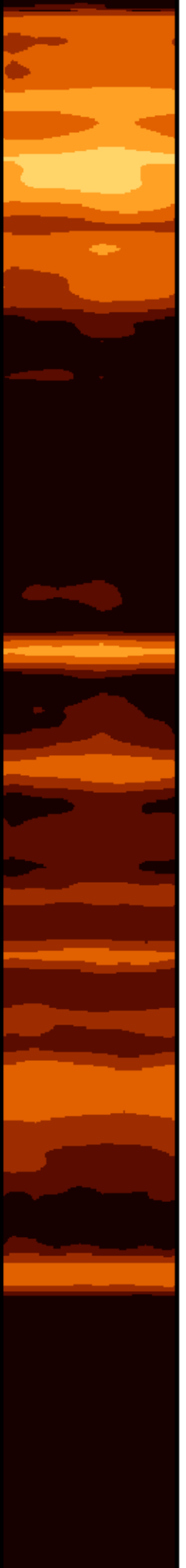


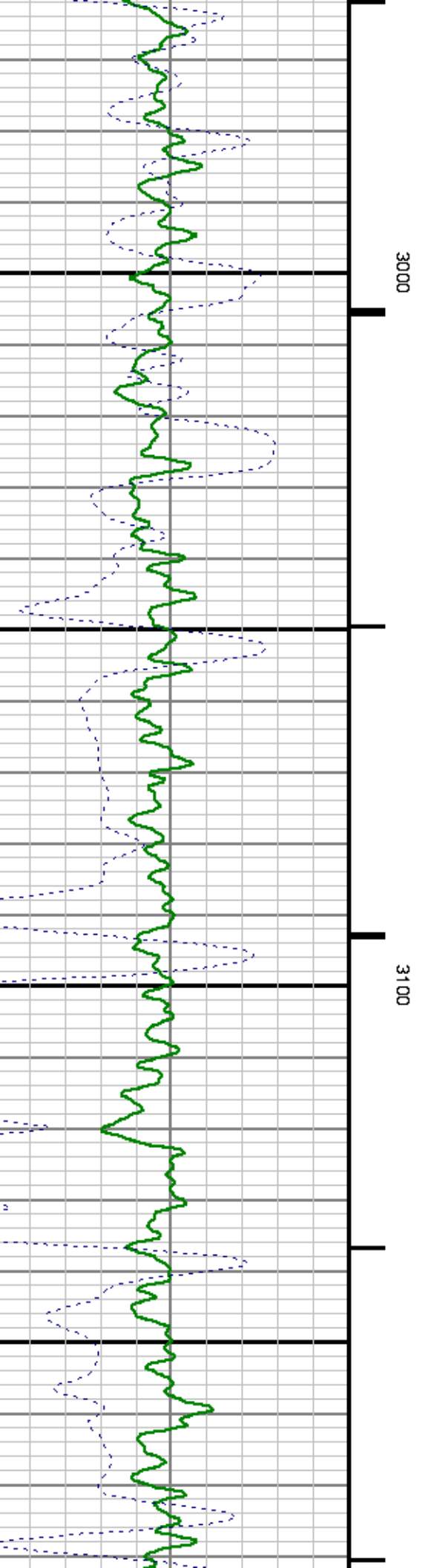
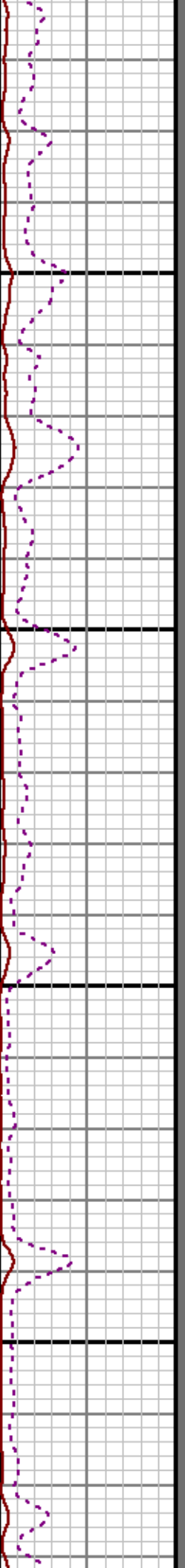
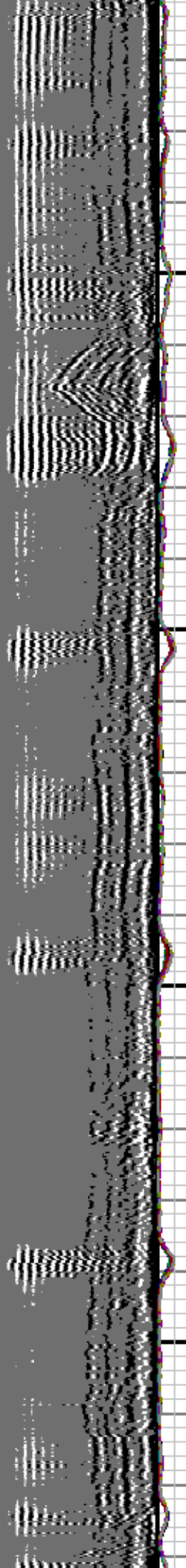
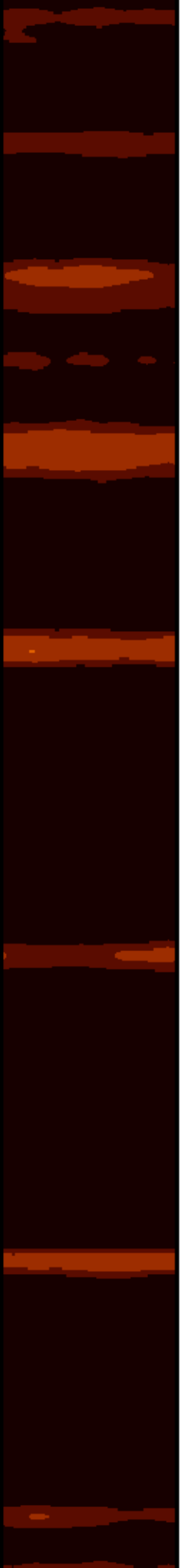


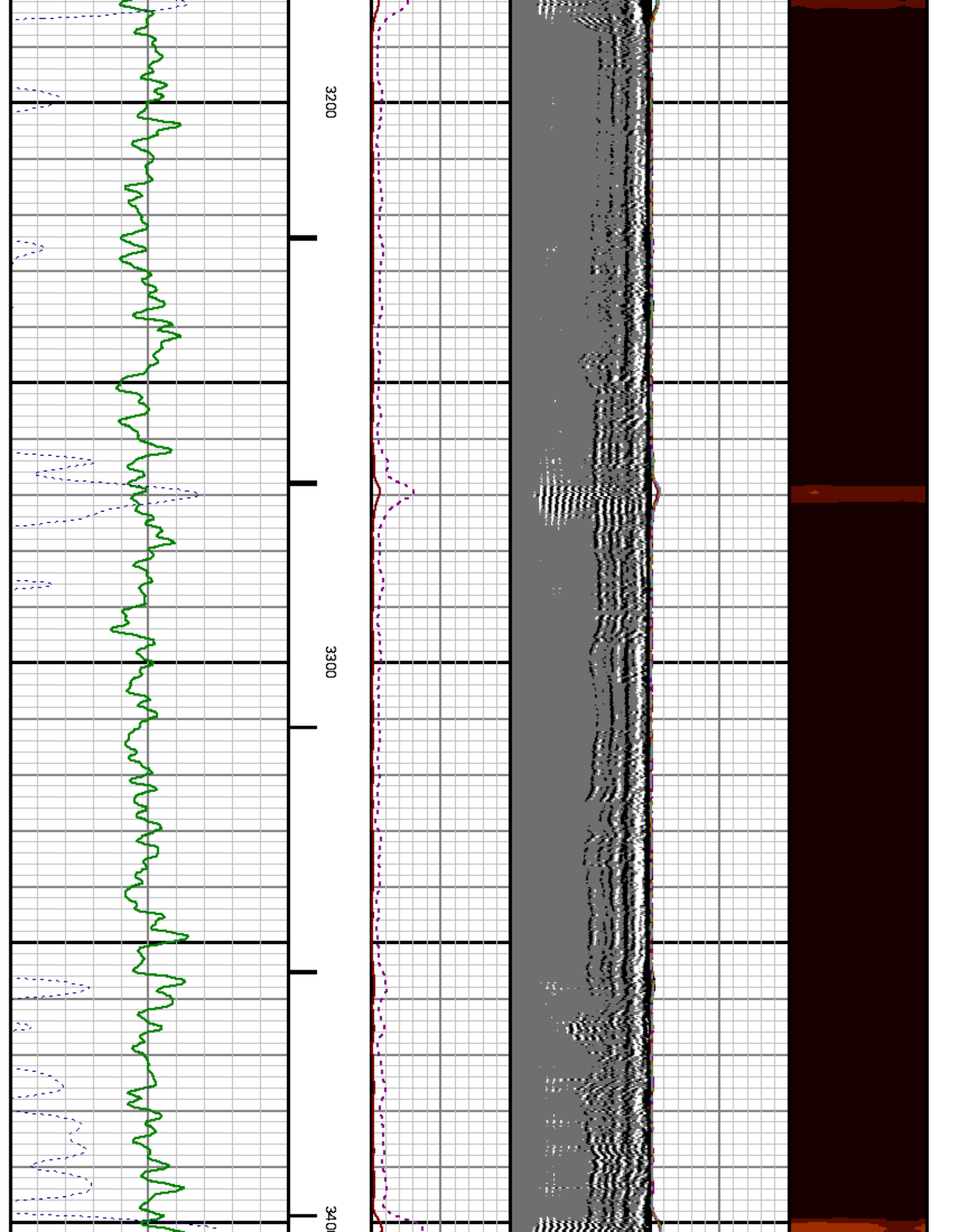


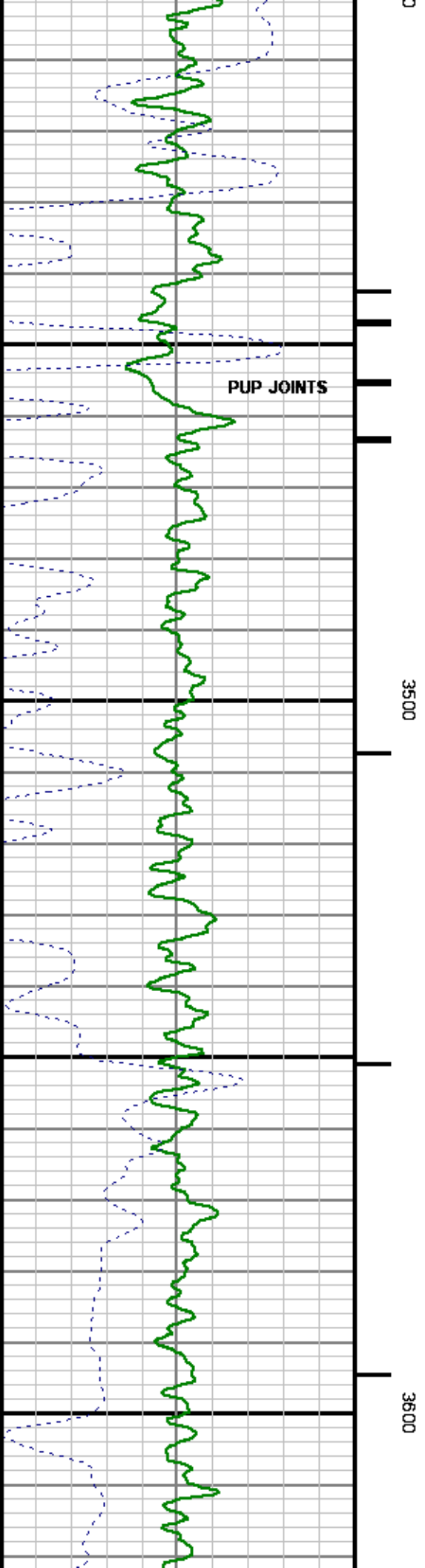
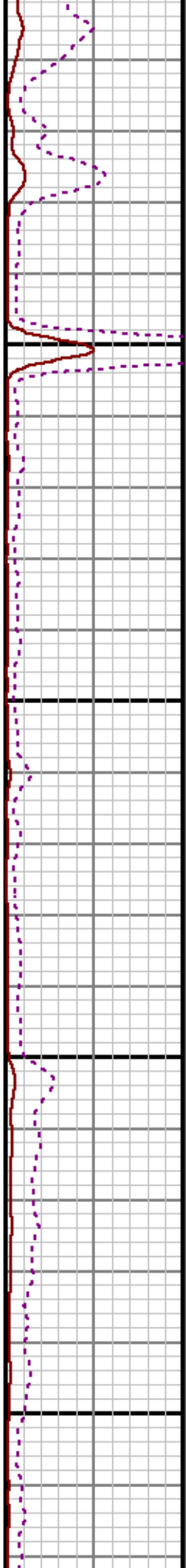
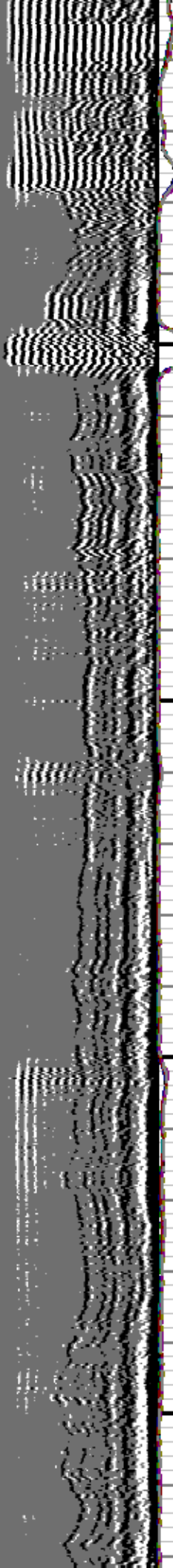
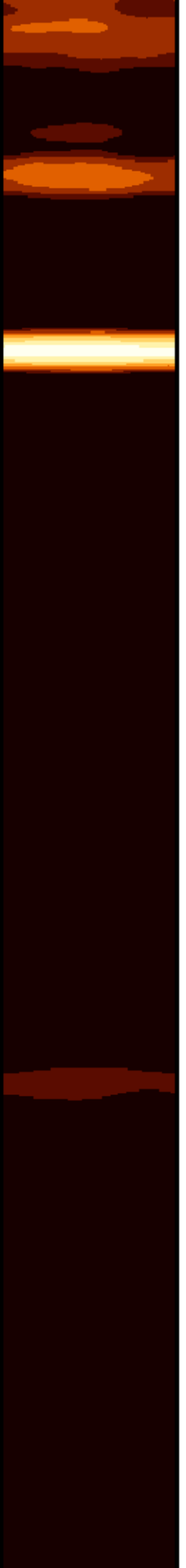








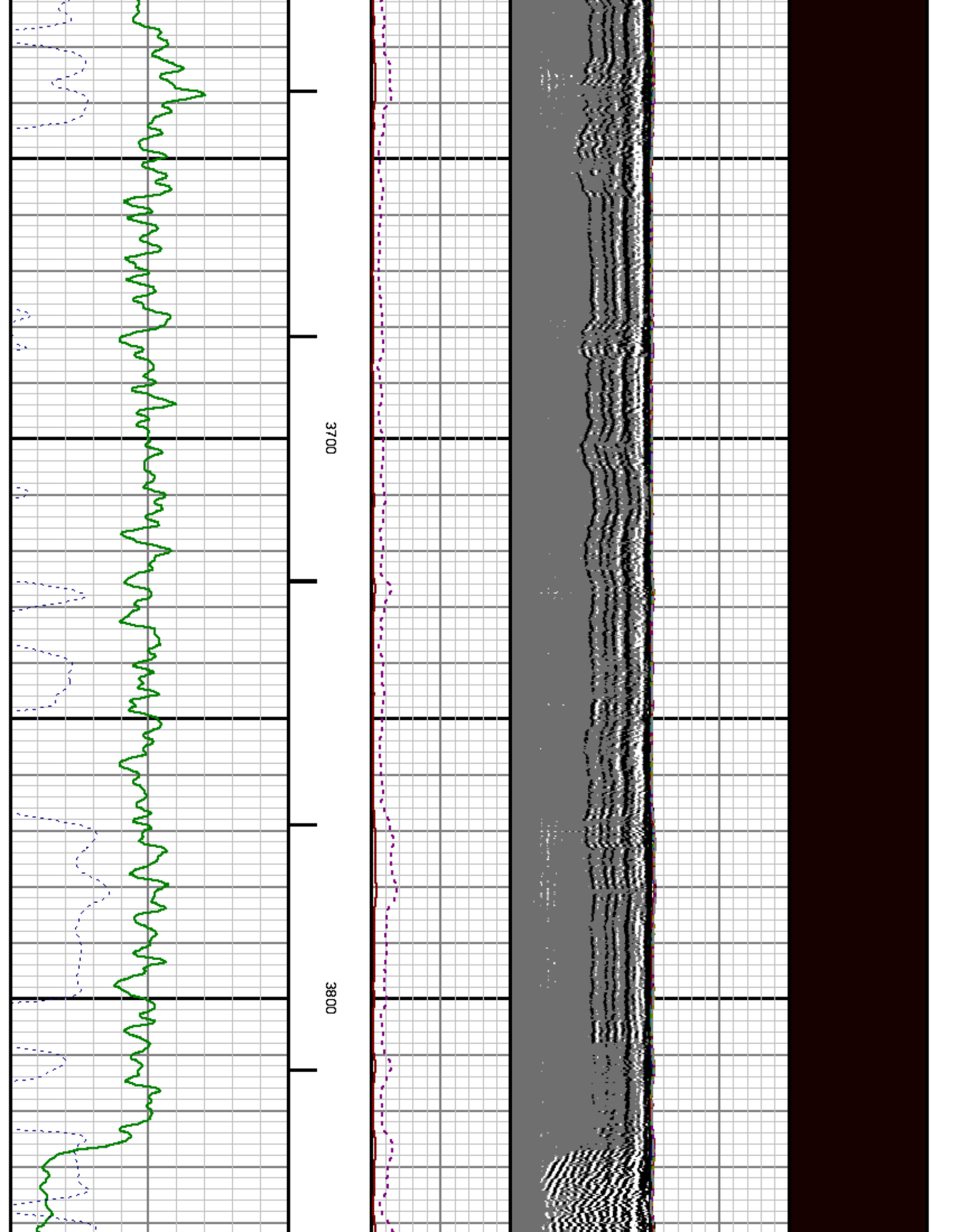


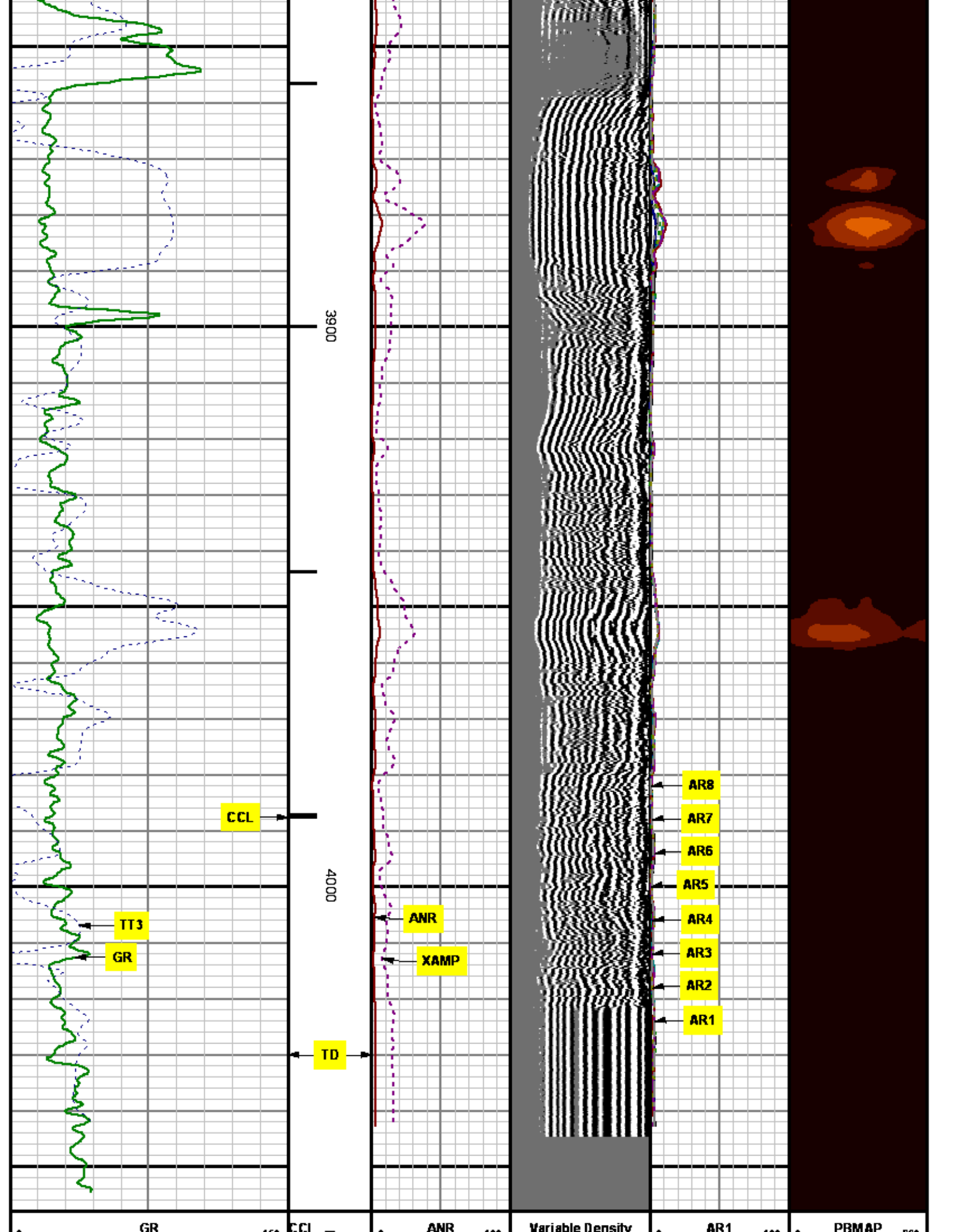


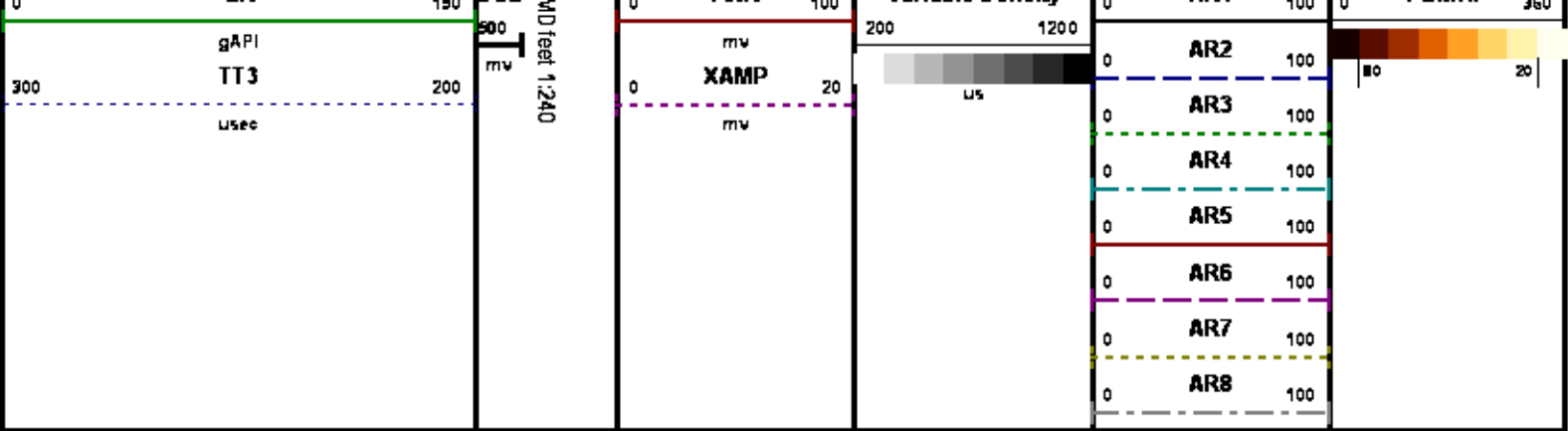
3500

3600

PUP JOINTS







CALIBRATION SUMMARY

GAMMA RAY

Calibration File: C:\case\calver\GR509M1.cal

CALIBRATION SUMMARY

DATE/TIME PERFORMED:	Mon May 05 15:20:35 2014	TOOL SERIES:	1355XA	ASSET:	509	SEQ:	M1
Calibrator #	Background [cps]	Calibrator On [cps]	Multiplicative	Background [api]	Calibrator On [api]	Differential [api]	
S2K DA601	51.07	182.89	0.759	38.74	138.74	100.00	

Verification File: C:\case\calver\GR509M1.VP

PRIMARY LOG VERIFICATION

DATE/TIME PERFORMED:	Mon May 05 15:21:55 2014	TOOL SERIES:	1355XA	ASSET:	509	SEQ:	M1
Calibrator #	Background [cps]	Calibrator On [cps]	Multiplicative	Background [api]	Calibrator On [api]	Differential [api]	
S2K DA601	52.13	186.58	0.759	39.55	141.54	101.99	

RALSHP

Shop Calibration: C:\case\calver\RALSHP\451J1_shp.cal

SHOP CALIBRATION SUMMARY

DATE/TIME PERFORMED:	Sun Jun 01 10:10:25 2014	TOOL SERIES:	1428XA	ASSET:	451	SEQ:	J1
Tool Delay [uSec]	Tank OD in	Tank Wt lbm/ft	Tank ID in				
-58.00	5.50	15.50	4.95				

RECEIVER	Travel Time [usec]	Amp. Gate Start [usec]	Amp. Gate Width [usec]	Zero Gate Start [usec]	Zero Gate Width [usec]	Zero Amp. [mV]	Amp Ref. [mV]	Shop Factor
CAL Pulse	220	216	30	166	25	0.194	100.00	0.53
3 Ft. Receiver	224	216	30	166	25	0.667	100.00	0.53
5 Ft. Receiver	392	329	30	122	25	-1.183	150.00	0.65
Radial #1	224	216	30	166	25	-0.267	100.00	0.53
Radial #2	224	216	30	166	25	0.522	100.00	0.53
Radial #3	224	216	30	166	25	0.833	100.00	0.53
Radial #4	224	216	30	166	25	0.650	100.00	0.53
Radial #5	224	216	30	166	25	0.578	100.00	0.53
Radial #6	222	216	30	166	25	0.744	100.00	0.53
Radial #7	220	216	30	166	25	0.761	100.00	0.52
Radial #8	224	216	30	166	25	0.694	100.00	0.53

RALFLD

Wellsite Calibration: C:\case\calver\RALFLD\451J2 fld.cal

WELLSITE CALIBRATION SUMMARY

DATE/TIME PERFORMED: Mon Jun 02 10:07:55 2014 TOOL SERIES: 1428XA ASSET: 451 SEQ: J2

Tool Delay [usec] Casing OD in Casing Wt lbm/ft Casing ID in

RECEIVER	Zero Gate Start [usec]	Zero Gate Width [usec]	Zero Amp. [mV]	Full Amp. [mV]	Wellsite Factor	Amp. Ref [mV]
CAL Pulse	166	25	-0.091	0.000	0.98	100.000
3 Ft. Receiver	216	30	0.742			
5 Ft. Receiver	136	30	-0.715			
Radial #1	216	30	0.586			
Radial #2	216	30	0.818			
Radial #3	216	30	1.009			
Radial #4	216	30	0.640			
Radial #5	216	30	0.569			
Radial #6	216	30	0.594			
Radial #7	216	30	0.638			
Radial #8	216	30	0.476			

TEMPERATURE

Calibration File: C:\case\calver\TEMP\509J1.cal

CALIBRATION SUMMARY

DATE/TIME PERFORMED: Mon Jun 02 10:08:13 2014 TOOL SERIES: 1355XA ASSET: 509 SEQ: J1

Tool Type Additive Multiplicative

TOOL DIAGRAM

OTA SHORT CABLE HEAD

CENTRALIZER

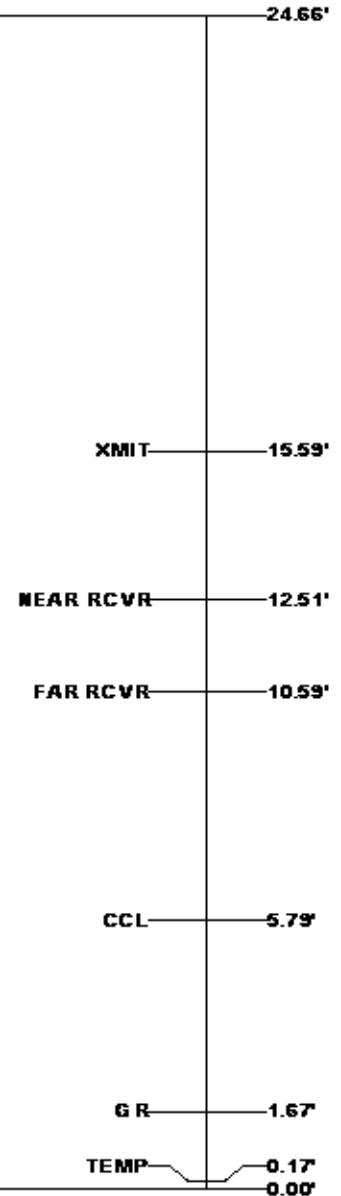
Series	RALCENT
Mnemonic	CENT
Diameter	3.12"
Weight	20.00 lb

PROBE 2 3/4 DUAL RECEIVER RADII (1426XA)

CENTRALIZER

Series	RALCENT
Mnemonic	CENT
Diameter	3.12"
Weight	20.00 lb

RAL GR/TEMP/CCL/CHV DETECTOR (1355XA)



Total Length: 24.66'

Total Weight: Not Available

Max Diameter: 0' 3.12"



Company
Well

TRENDWELL WEST INC.

SMITH 1-10

File No:

EG001

Field	WILDCAT			API No:	11027200030000
County	CANYON	State	IDAHO		
Location:				Elevations	
				KB 2449 ft.	
				DF 2448 ft.	
				GL 2437 ft.	
SEC:	10	TWP:	5N	RGE:	4E

MEASUREMENT TYPE	PARAMETER	VALUE	UNITS	TOP	BOTTOM
RAL	Amp Gate Start Far	332.187	usec	3849.750	3957.000
RAL	Amp Gate Start Near	215.678	usec	3849.750	3957.000
RAL	Amp Gate Start Radial	215.678	usec	3849.750	3957.000
RAL	Amp Gate Width Far	25.000	usec	3849.750	3957.000
RAL	Amp Gate Width Near	25.000	usec	3849.750	3957.000
RAL	Amp Gate Width Radial	25.000	usec	3849.750	3957.000
RAL	casing od	5.500	inches	3849.750	3957.000
RAL	casing wt	15.500	lbm/ft	3849.750	3957.000
RAL	FB Start Far	307.187	usec	3849.750	3957.000
RAL	FB Start Near	190.678	usec	3849.750	3957.000
RAL	FB Start Radial	190.678	usec	3849.750	3957.000
RAL	FB Thresh Far	10.000	mv	3849.750	3957.000
RAL	FB Thresh Near	4.000	mv	3849.750	3957.000
RAL	FB Thresh Radial	4.000	mv	3849.750	3957.000
RAL	Fluid Travel Time	200.000	Usecc/ft	3849.750	3956.965

DEPTH OFFSETS

(for Acquired Curves)

SERIES	DEPTH OFFSET	ACQUIRED CURVES
1426XA	-14.000	ACAL ANR AR1 AR2 AR3 AR4 AR5 AR6 AR7 AR8 CHV FPR2 FPR3 FPR5 TT3 TTR1 TTR2 TTR3 TTR4 TTR5 TTR6 TTR7 TTR8 XAMP
1426XA	-13.040	AFAR SIG TT5
1355XA	-5.620	CCL
1355XA	-1.500	GR
1355XA	0.000	TEMP

Company : TRENDWELL WEST INC.

Well : SMITH 1-10

File Name : C:\WELLDATA\10RAD\TIE.XTF

Mode : PlotMgr5.4.504

Interval : 3807.00 - 3957.00 feet UP

Created : 6/2/2014 4:04:32 PM

