



RADIAL ANALYSIS BOND LOG

File No: **00001** Company: **TRENDWELL WEST INC.**
 Well: **SMITH 1-10**
 API No. **1102700000000** Field: **WILDCAT**
 County: **CANYON** State: **IDAHO**

Location: _____ Other Services: _____
 SEC: **10** TWP: **6N** RGE: **1E**
 PERM: _____

Permanent Datum: _____ Elevation: **2457 ft**
 Log Measured From: **K.B.** _____ Elevation: **12 ft** Above P. D.
 Drill Measured From: **KELLY BURRING** _____ Elevation: **GL 2457 ft**

Date	02-JUNE-2014
Run	ONE
Service Order	00001
Depth Driller	4053 ft
Depth Logger	4050 ft
Bottom Logged Interval	4050 ft
Top Logged Interval	SURFACE
Time Started	11:00
Time Finished	12:30
Operator Rig Time	2.5 HRB
Type of Fluid in Hole	WATER
Fluid Density	N/A
Fluid Salinity	N/A
Fluid Level	FULL
Logged Cement Top	N/A
Wellhead Pressure	0 PSI
Maxi mum Hole Deviation	N/A
Nominal Logging Speed	66 fpm
Maxi mum Recorded Temperature	214 deg F
Reference Log	BAKER HUGHES/DL-ZOL-QN-GR
Reference Log Date	24-MARCH-2014
Equipment	4255
Recorded By	TIM KAULT
Witnessed By	MR. EARL BRINTZENHOFF

In making interpretations of logs, our employees will give the customer the benefit of their best judgement. But since all interpretations are opinions based on inferences from electrical or other measurements, we cannot, and we do not guarantee the accuracy or correctness of any interpretation. We shall not be liable or responsible for any loss, cost, damages, or expenses whatsoever incurred or sustained by the customer resulting from any interpretation made by any of our employees.

Bit Size	From	To

Size	Weight	Grade	From	To
5.5 in	15.5 lbm/ft	N/A	SURFACE	4053 ft

Remarks
 This log is correlated to the Baker Hughes open hole log dated 24-mar-14.
 BHT recorded was 214°
 The crew of 4255 Thanks You.

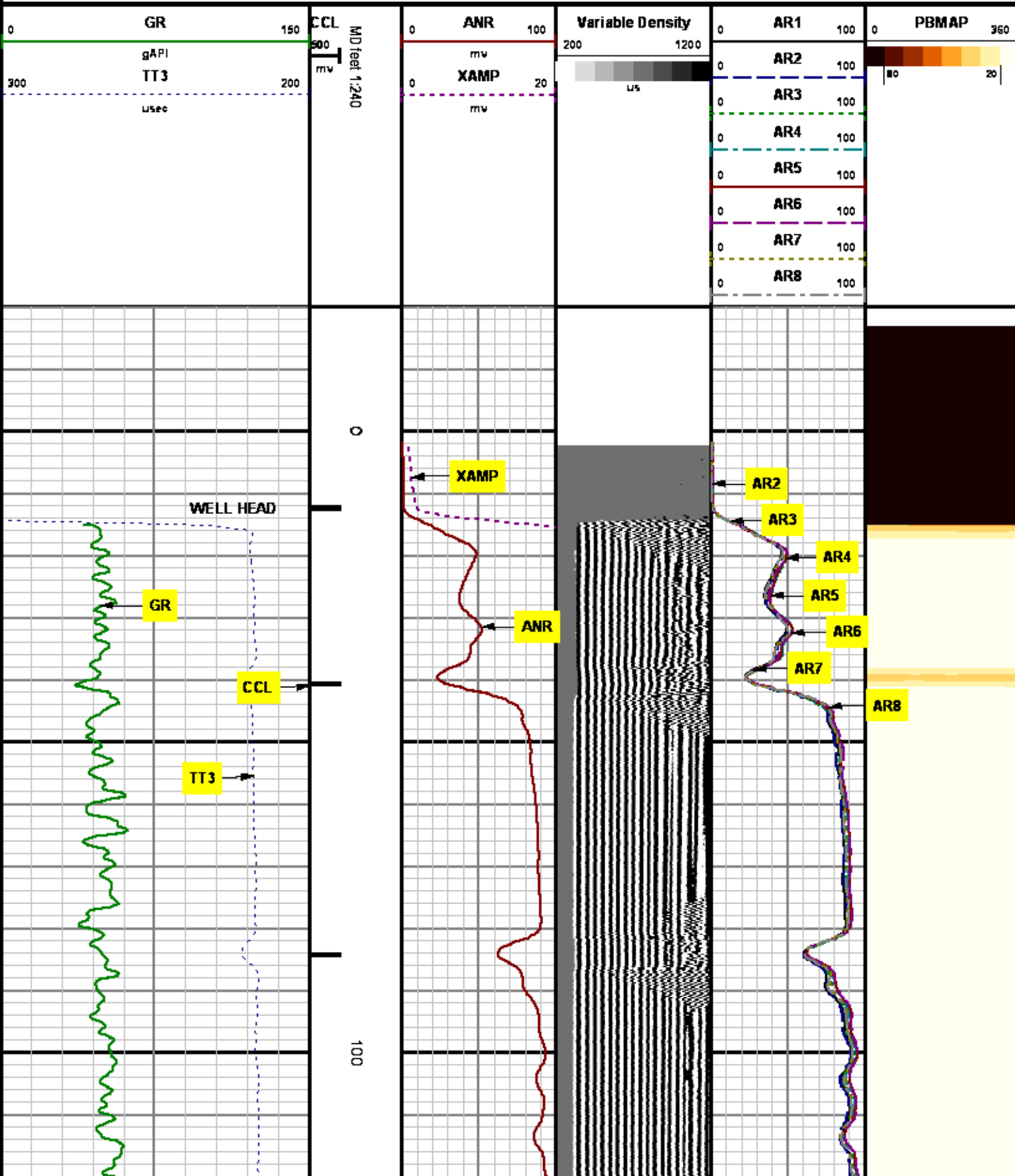
Run	Trip	Tool	Series Number	Serial Number	Position
1	1	MANDREL	142E XA	10417451	CENTRALIZED

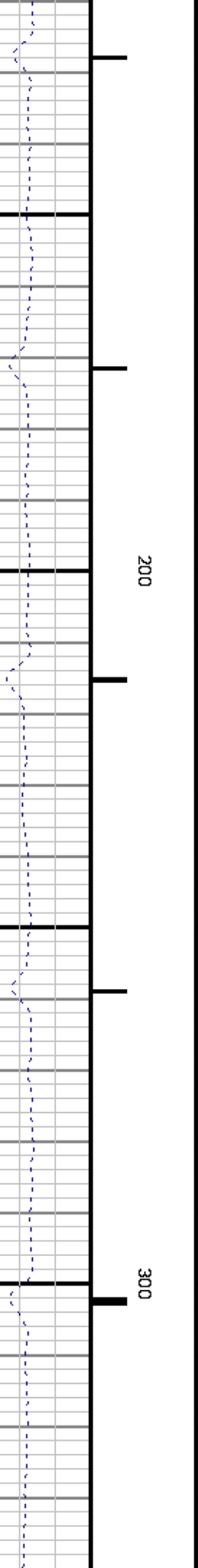
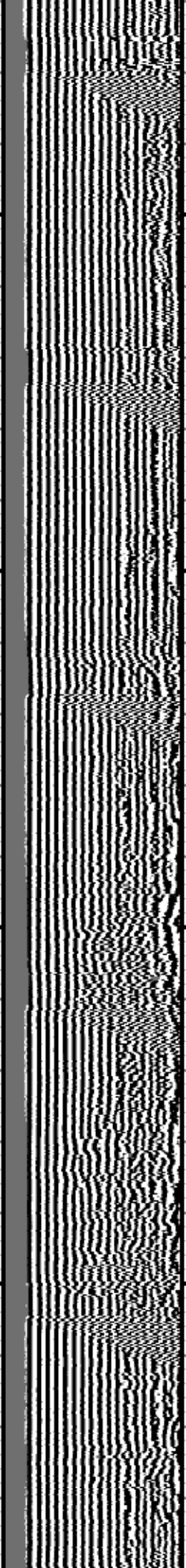
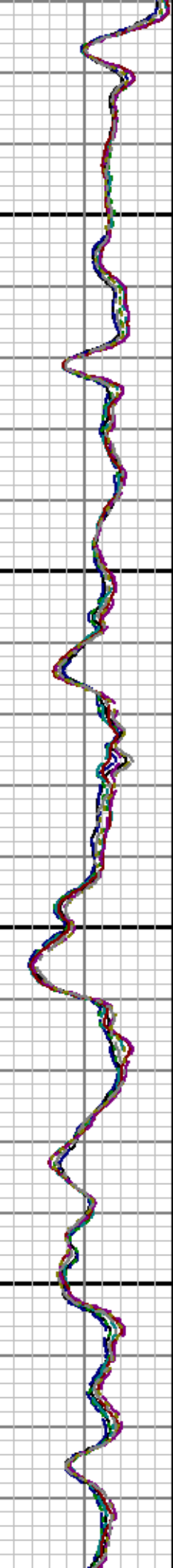
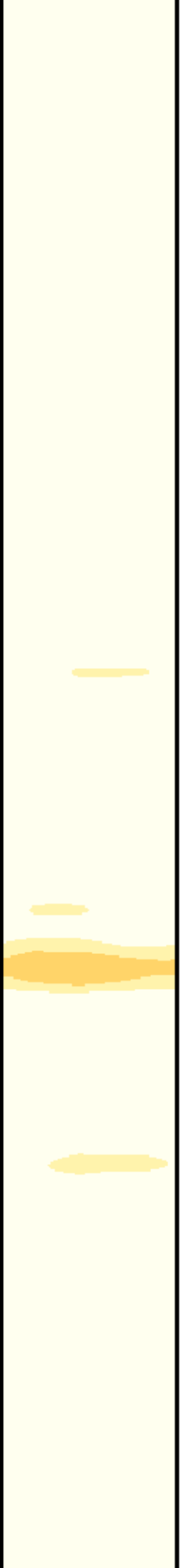
MAIN SECTION

MEASUREMENT TYPE	PARAMETER	VALUE	UNITS	TOP	BOTTOM
RAL	Amp Gate Start Far	332.187	usec	12.617	4052.000
RAL	Amp Gate Start Near	215.678	usec	12.617	4052.000
RAL	Amp Gate Start Radial	215.678	usec	12.617	4052.000
RAL	Amp Gate Width Far	25.000	usec	12.617	4052.000
RAL	Amp Gate Width Near	25.000	usec	12.617	4052.000
RAL	Amp Gate Width Radial	25.000	usec	12.617	4052.000
RAL	casing od	5.500	inches	12.617	4052.000
RAL	casing wt	15.500	lbm/ft	12.617	4052.000
RAL	FB Start Far	307.187	usec	12.617	4052.000
RAL	FB Start Near	190.678	usec	12.617	4052.000
RAL	FB Start Radial	190.678	usec	12.617	4052.000
RAL	FB Thresh Far	10.000	mv	12.617	4052.000
RAL	FB Thresh Near	4.000	mv	12.617	4052.000
RAL	FB Thresh Radial	4.000	mv	12.617	4052.000
RAL	Fluid Travel Time	200.000	usec/ft	12.617	4051.973

DEPTH OFFSETS (for Acquired Curves)

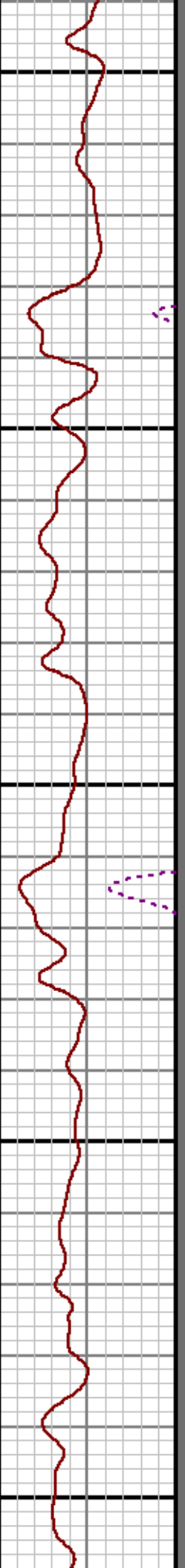
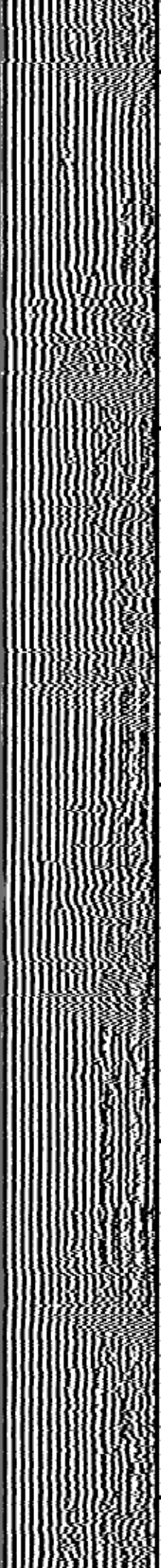
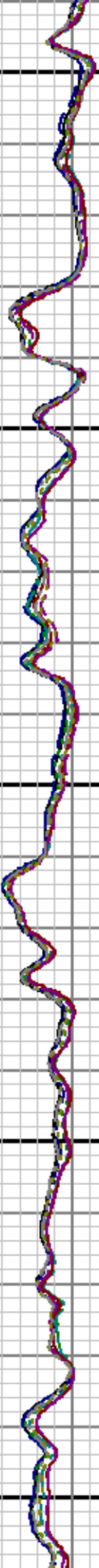
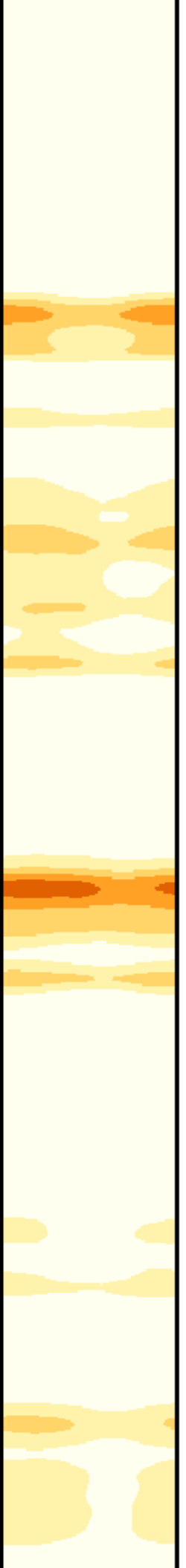
SERIES	DEPTH OFFSET	ACQUIRED CURVES
1426XA	-14.000	ACAL ANR AR1 AR2 AR3 AR4 AR5 AR6 AR7 AR8 CHV FPR2 FPR3 FPR5 TT3 TTR1 TTR2 TTR3 TTR4 TTR5 TTR6 TTR7 TTR8 XAMP
1426XA	-13.040	AFAR SIG TT5
1355XA	-5.620	CCL
1355XA	-1.500	GR
1355XA	0.000	TEMP





200

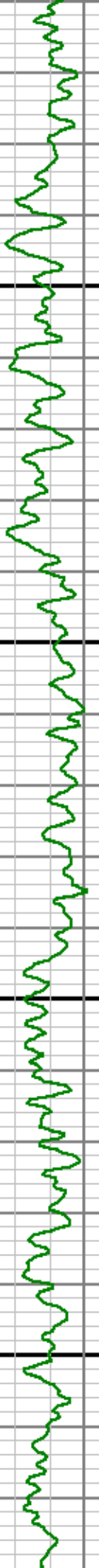
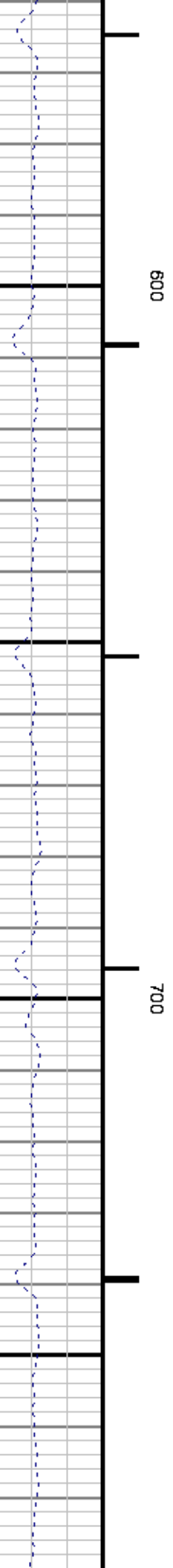
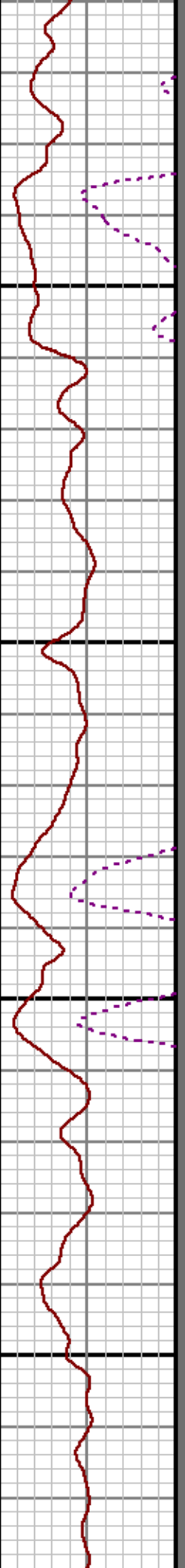
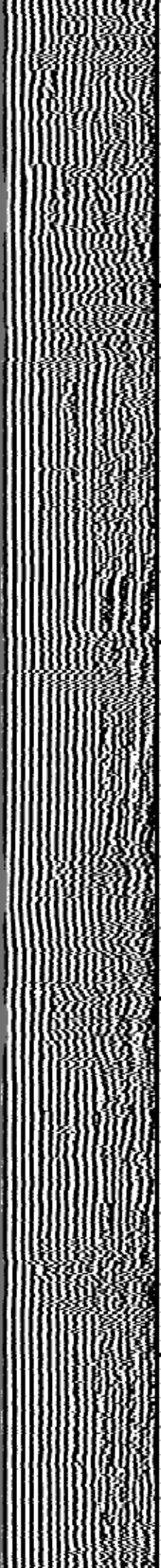
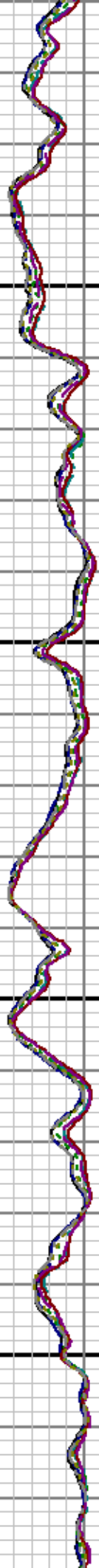
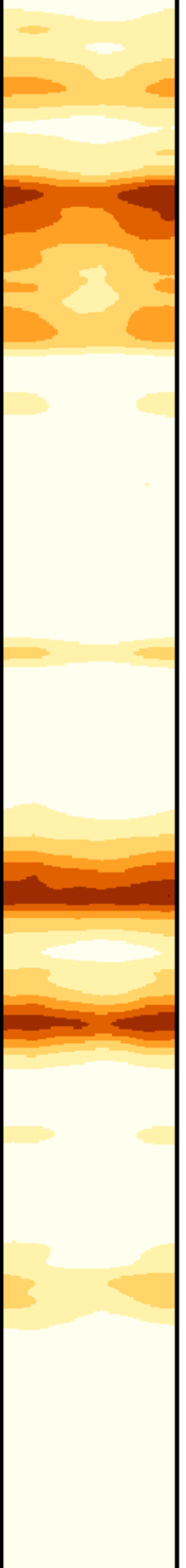
300



400

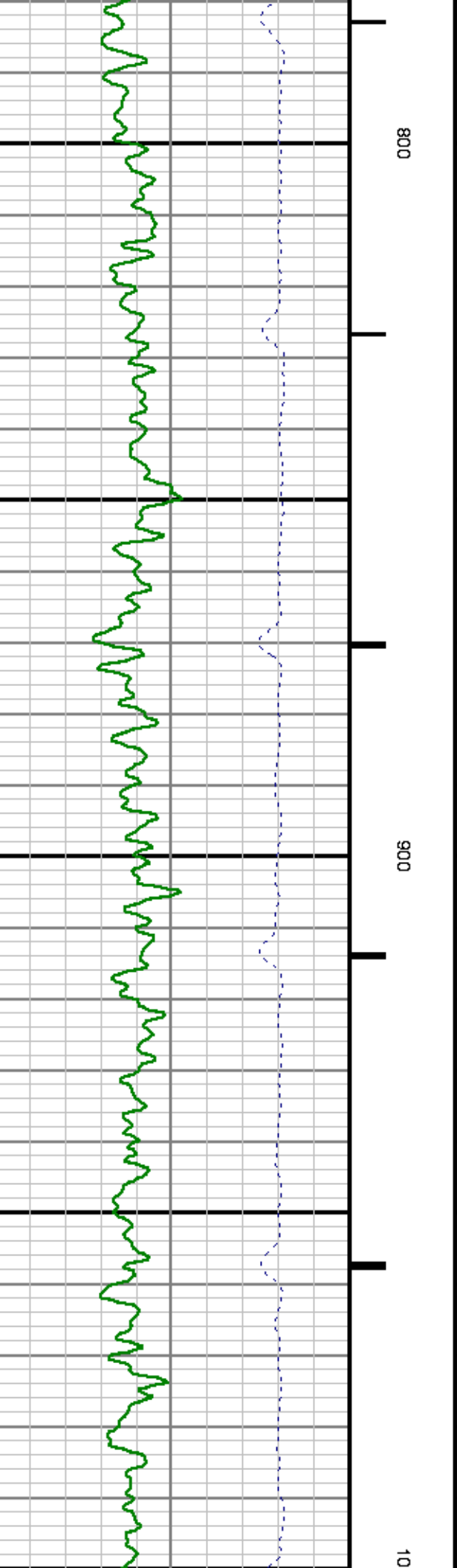
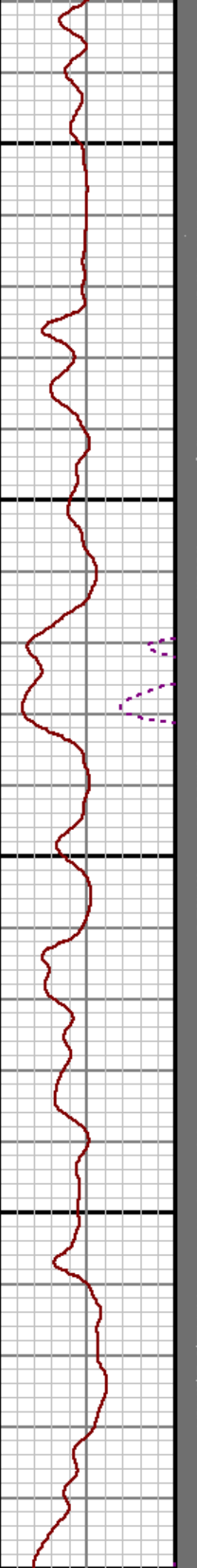
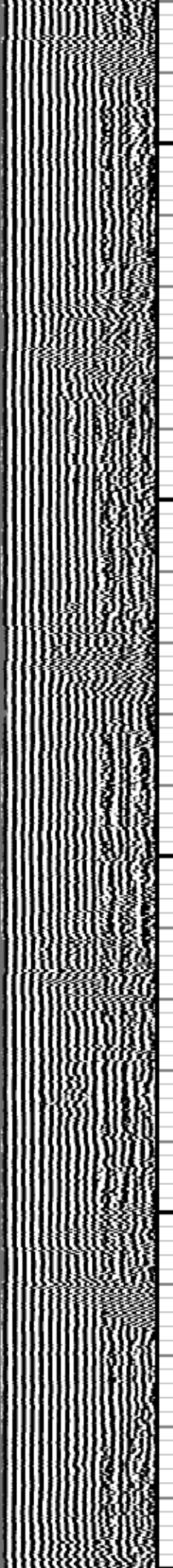
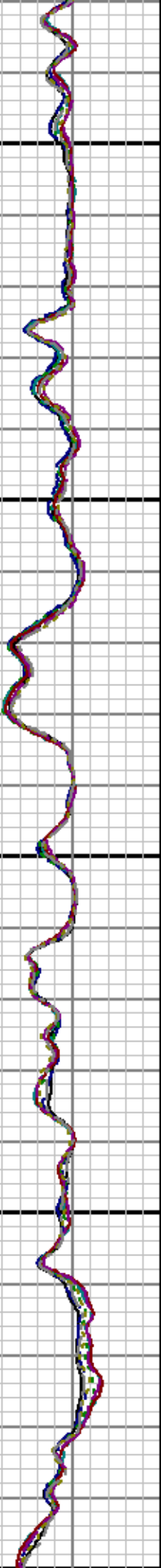
500

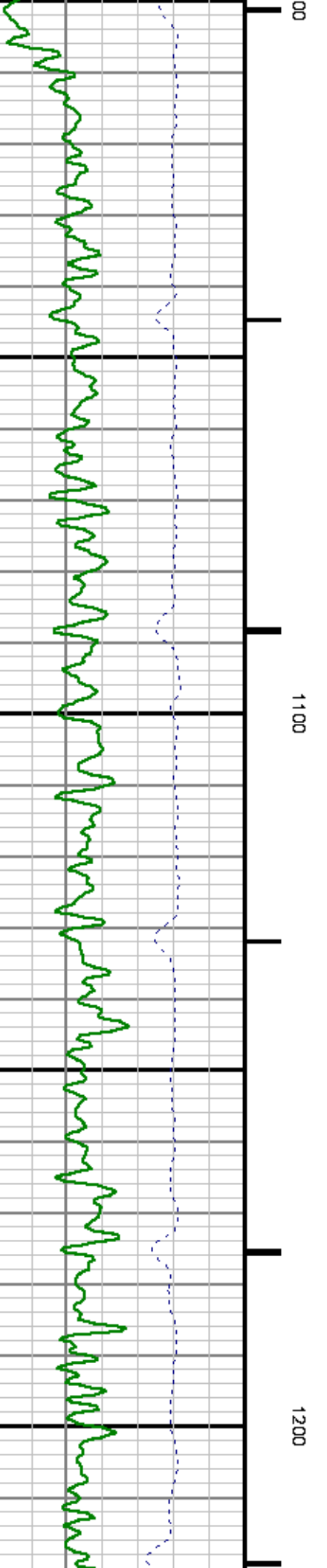
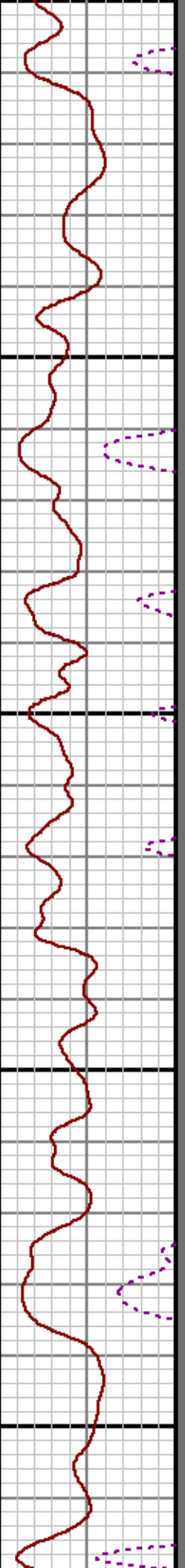
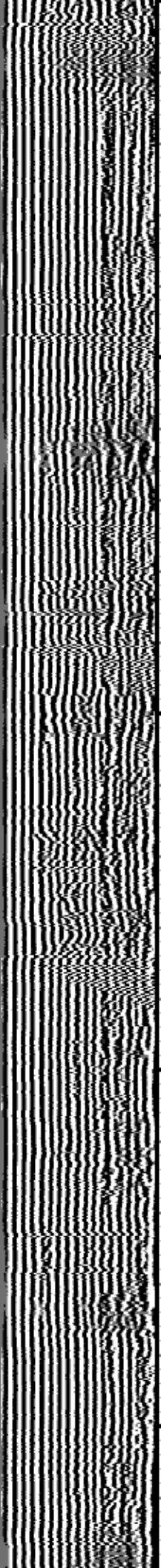
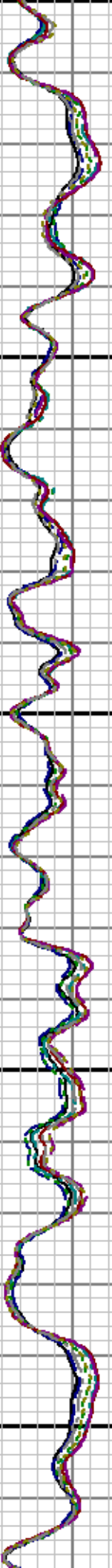
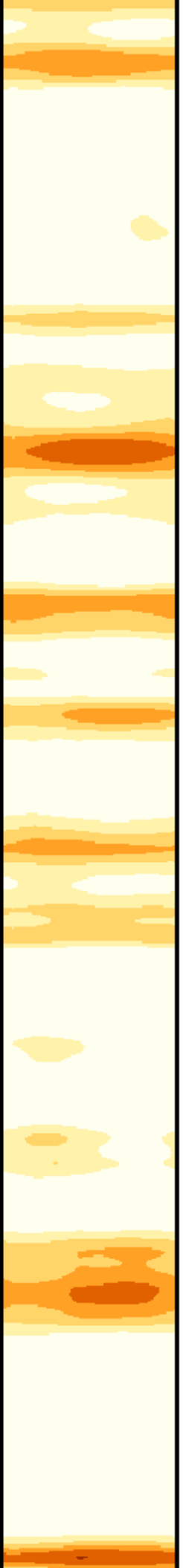


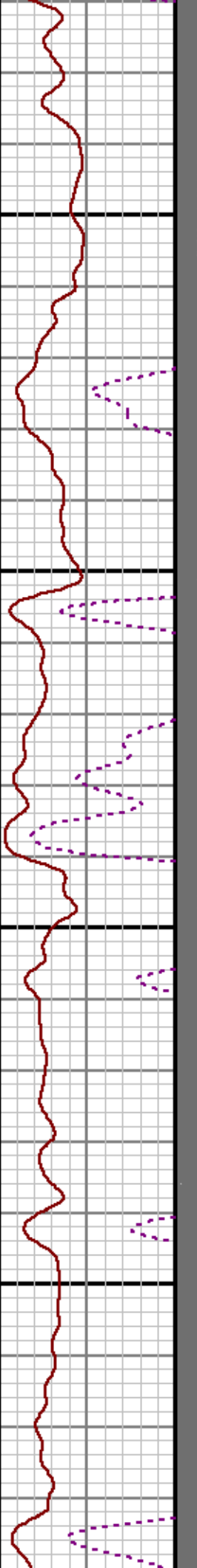
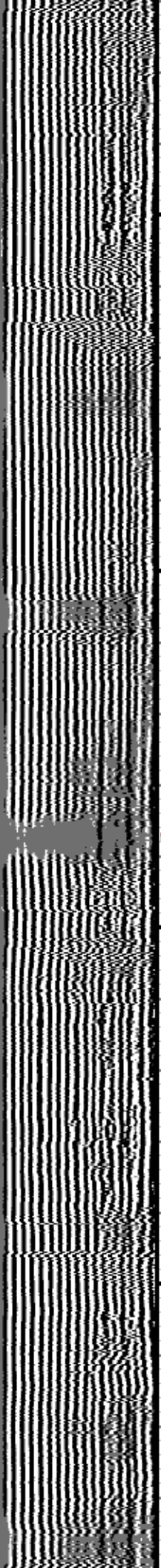
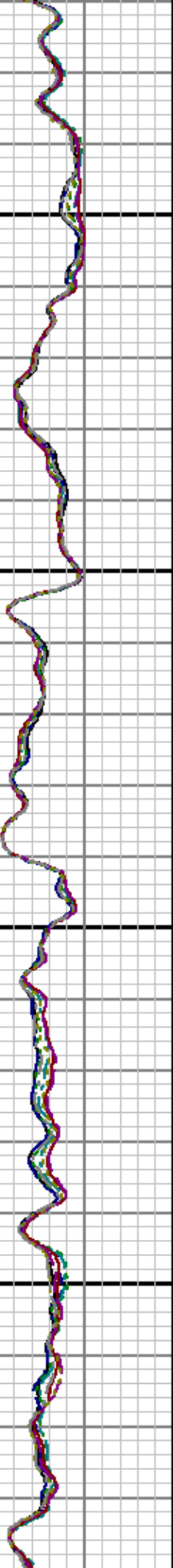


600

700

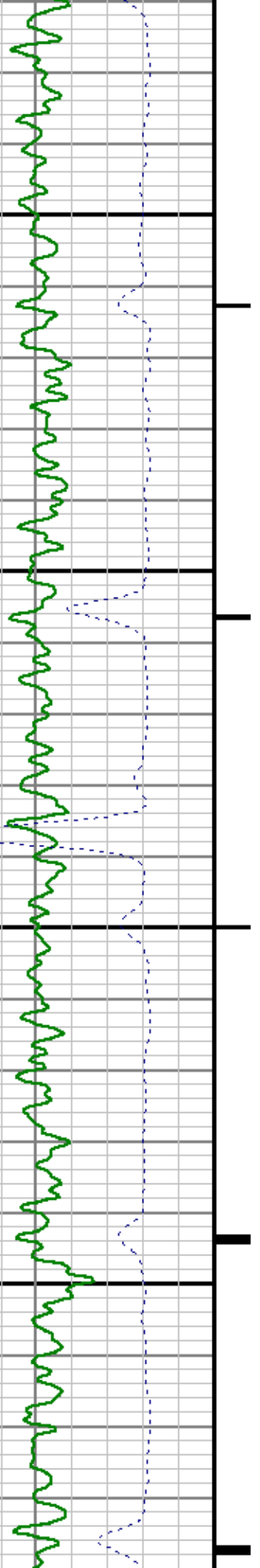


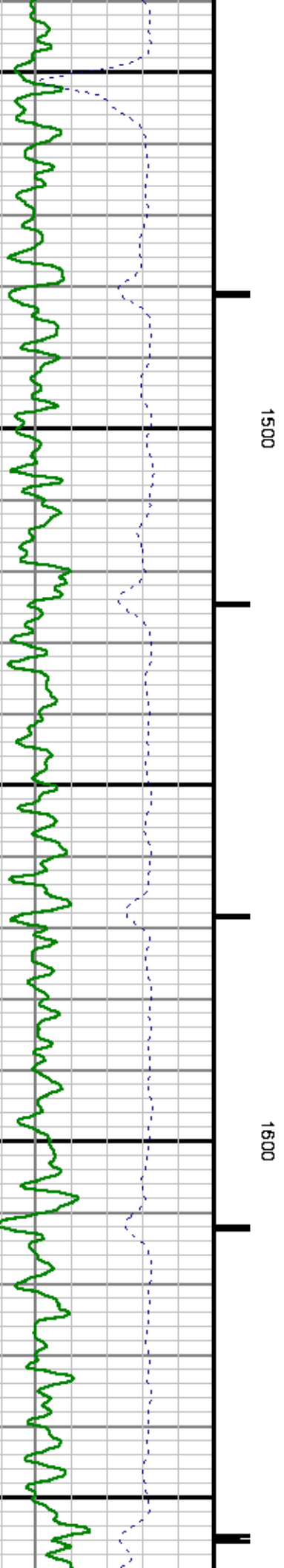
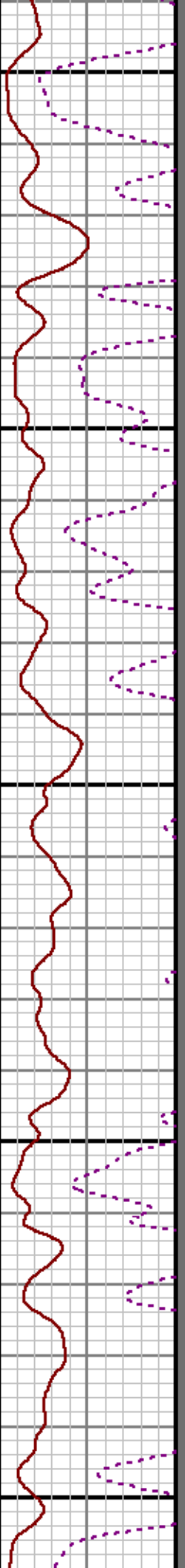
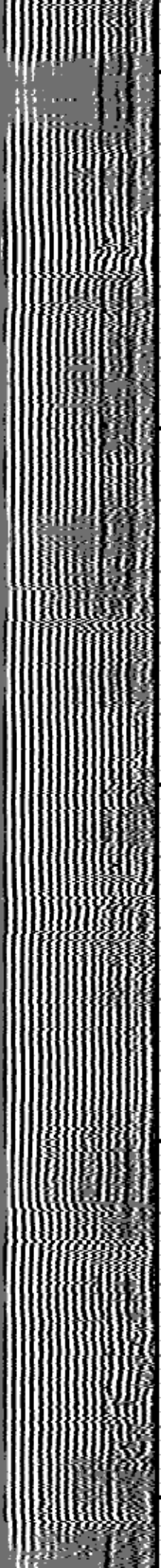
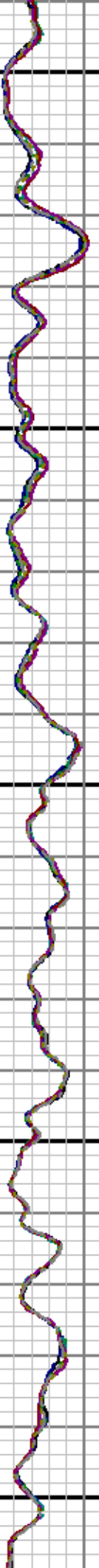




1300

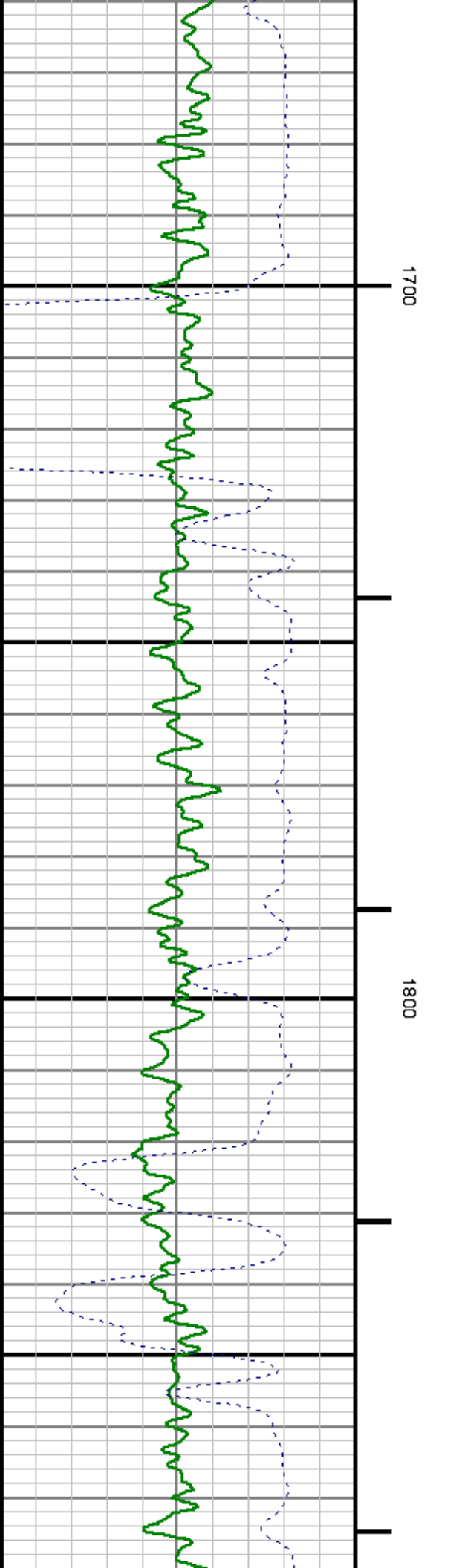
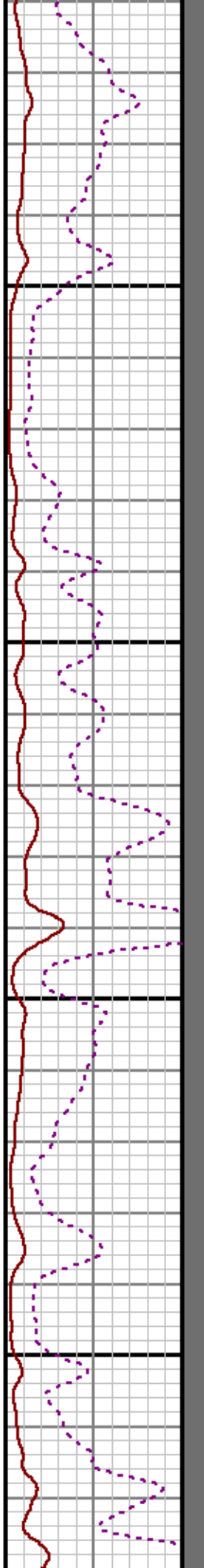
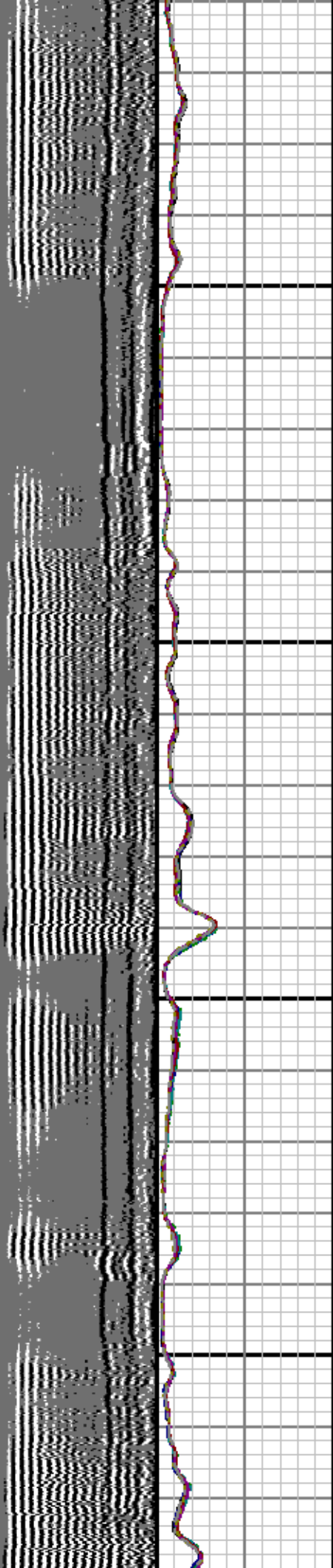
1400





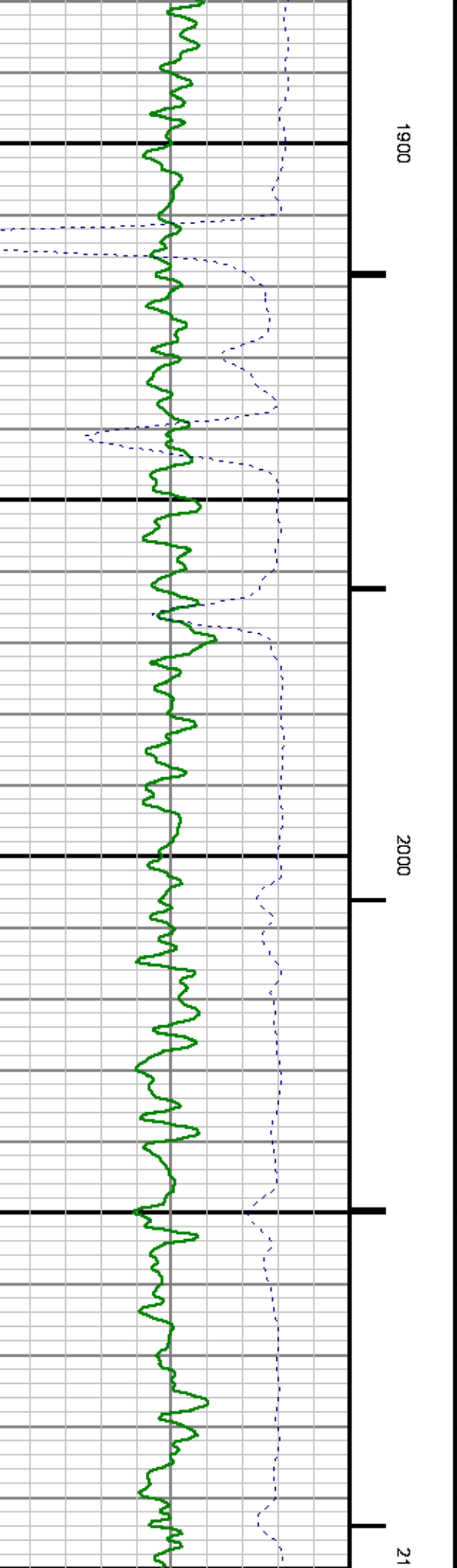
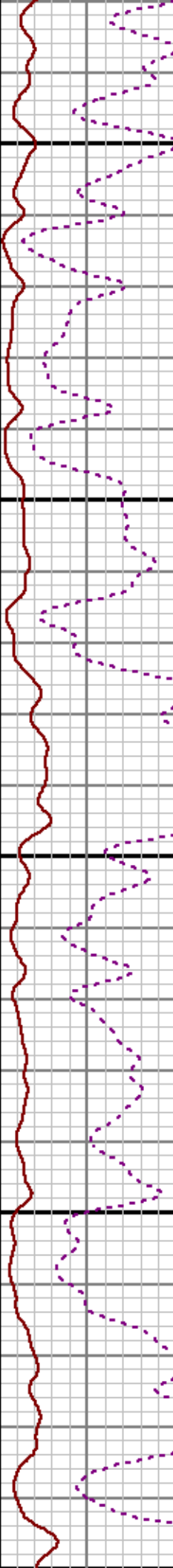
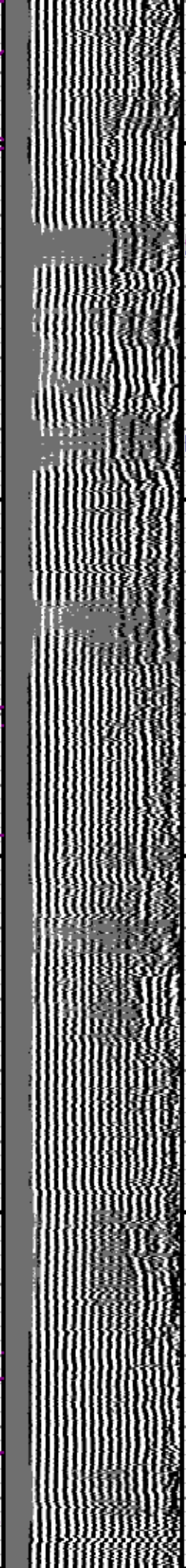
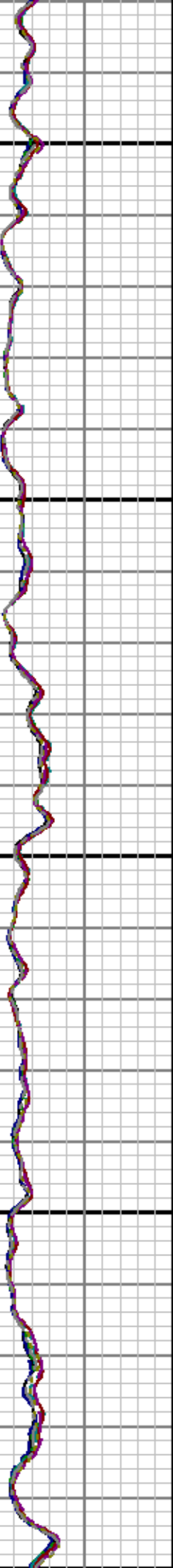
1500

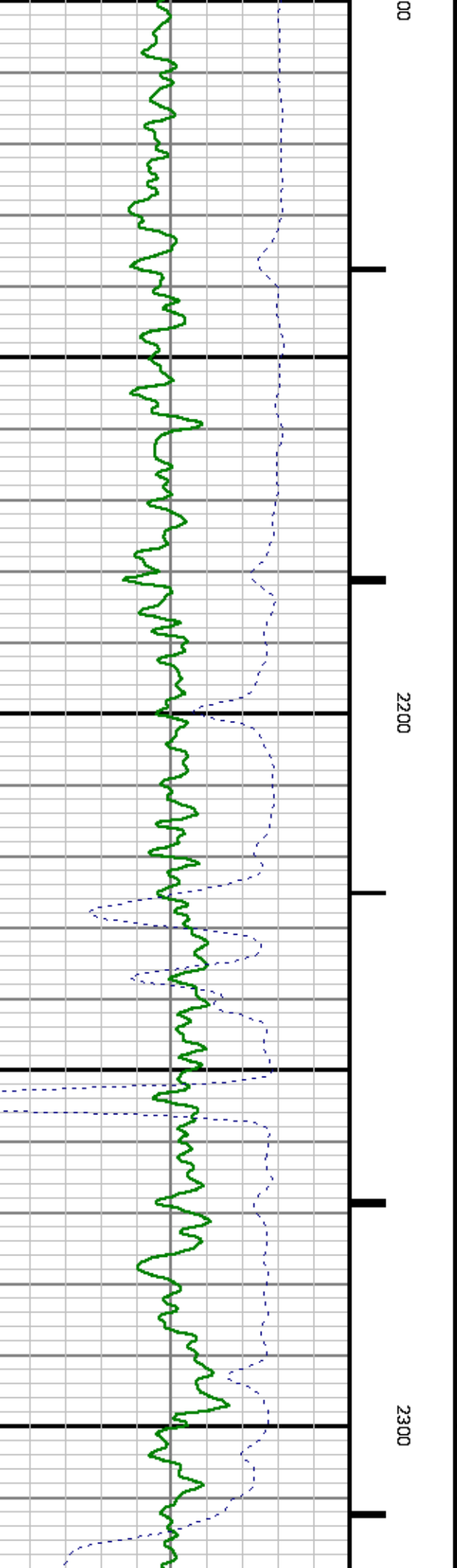
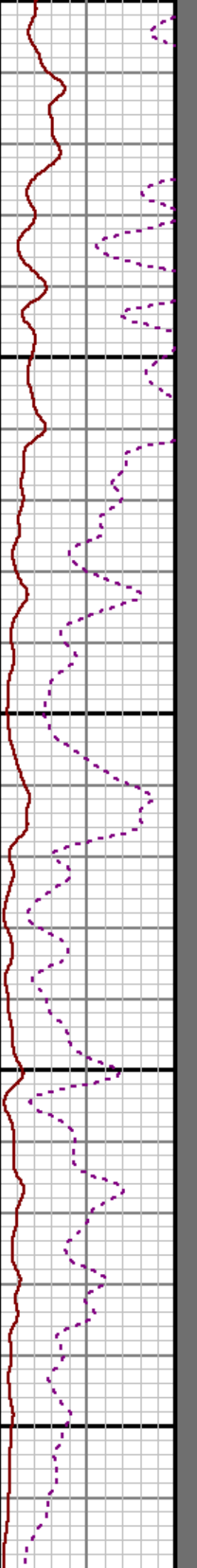
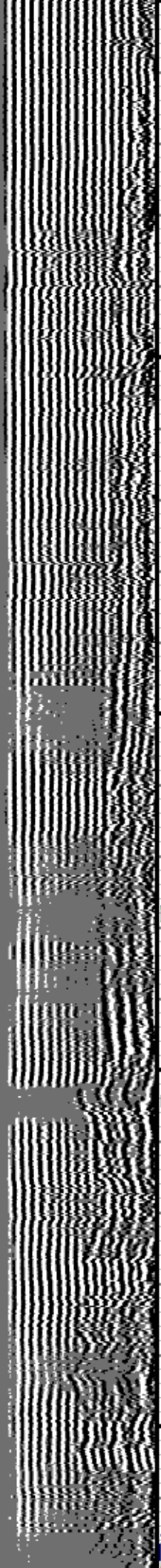
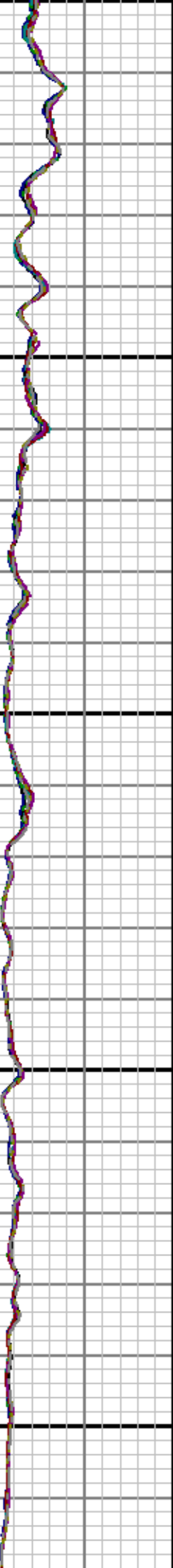
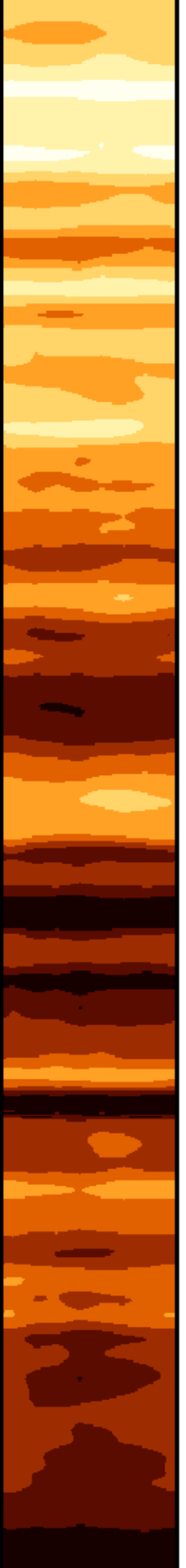
1600

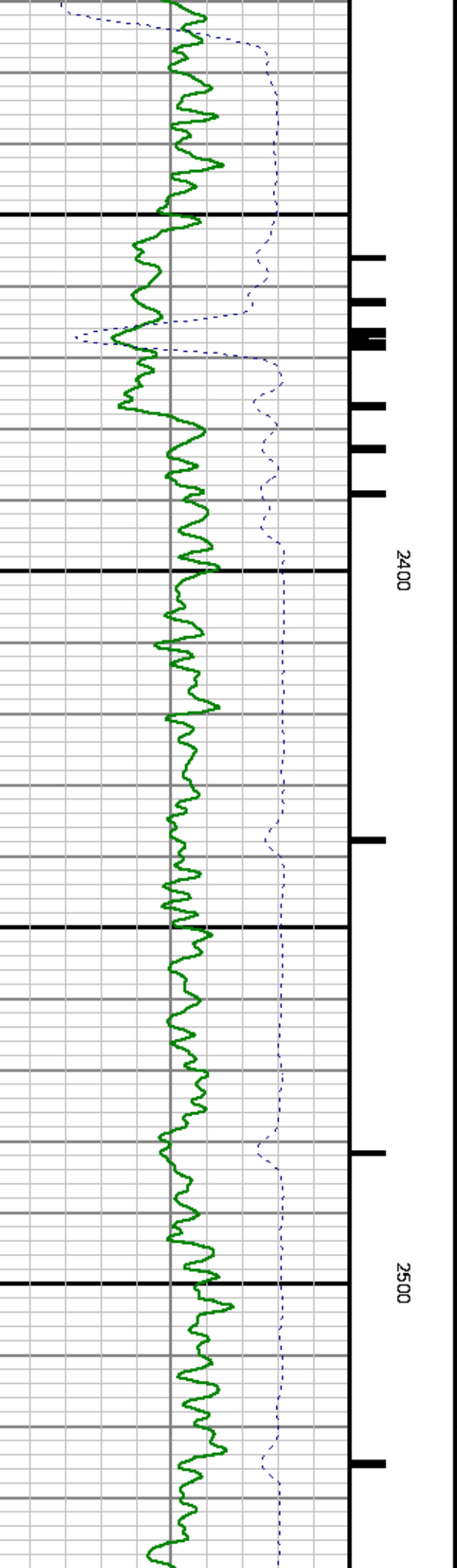
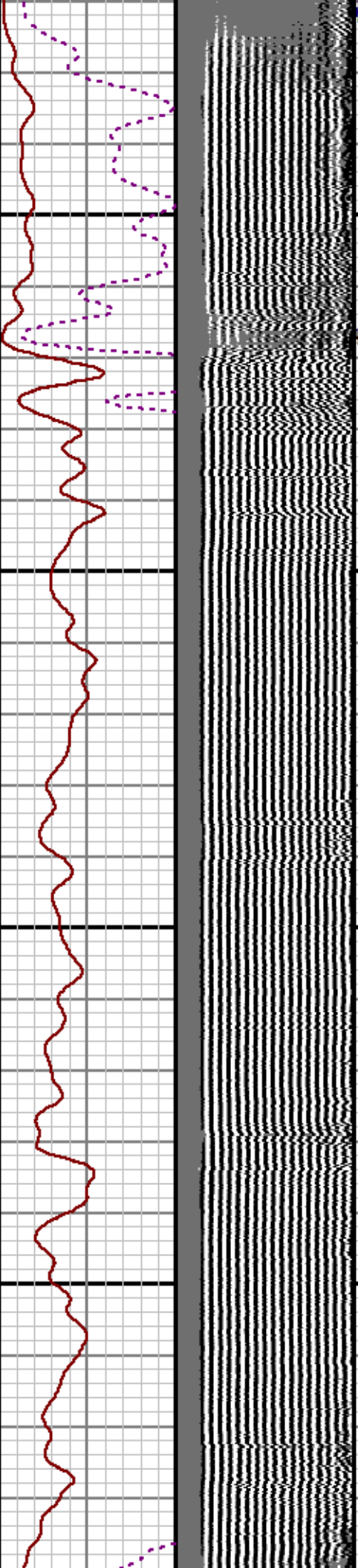
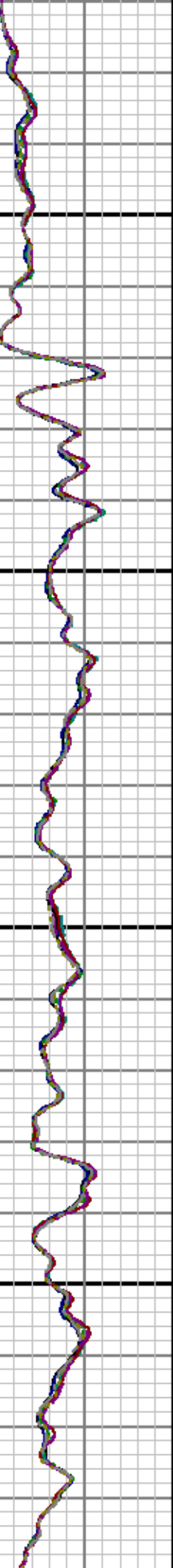


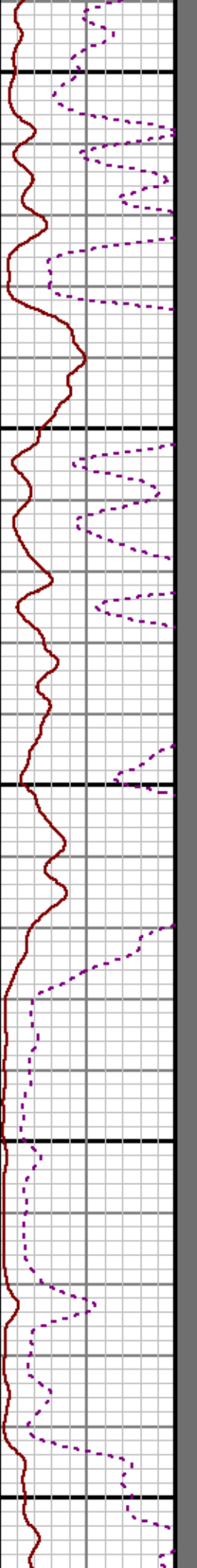
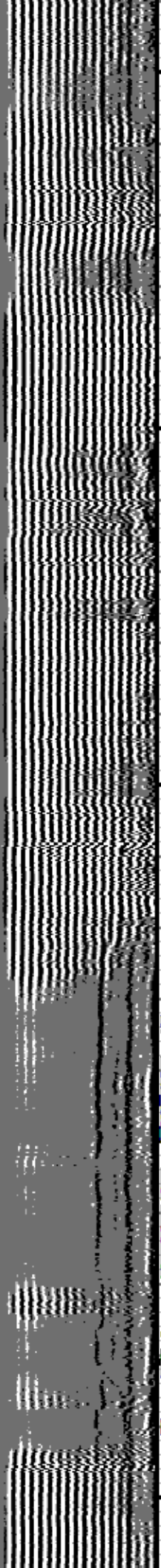
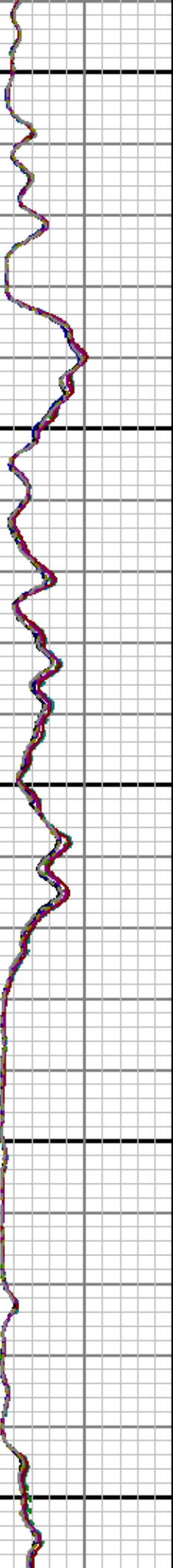
1700

1800



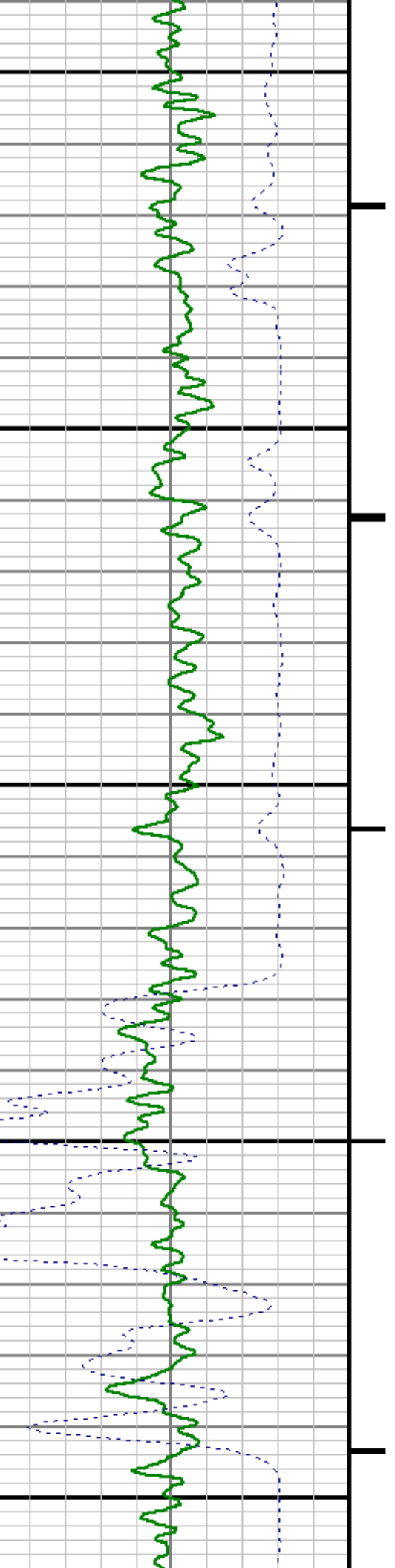


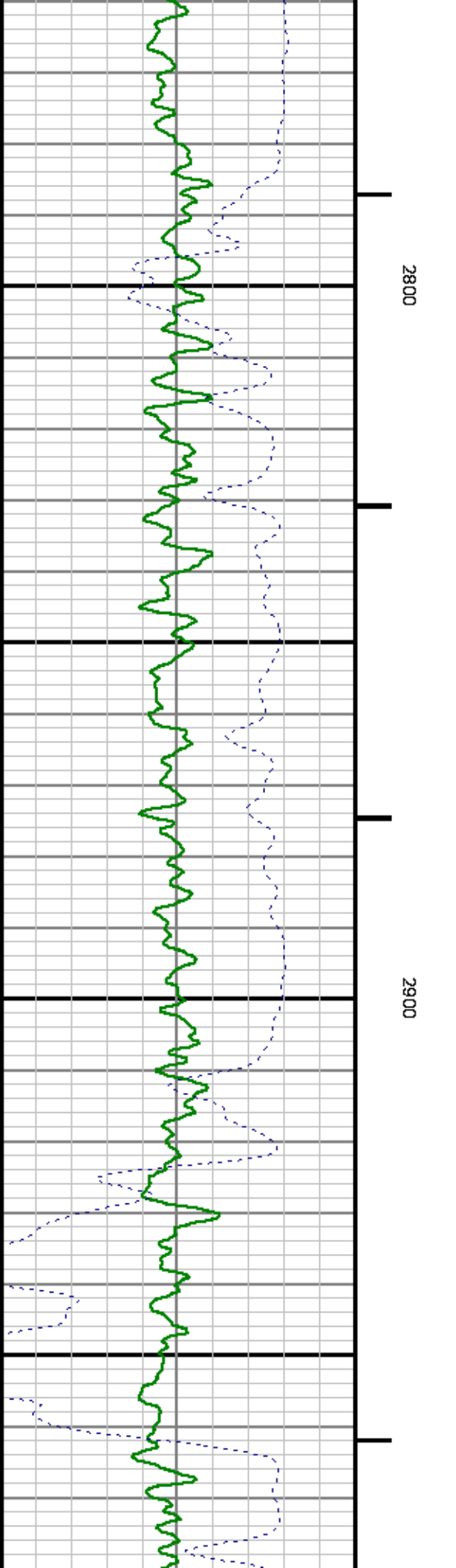
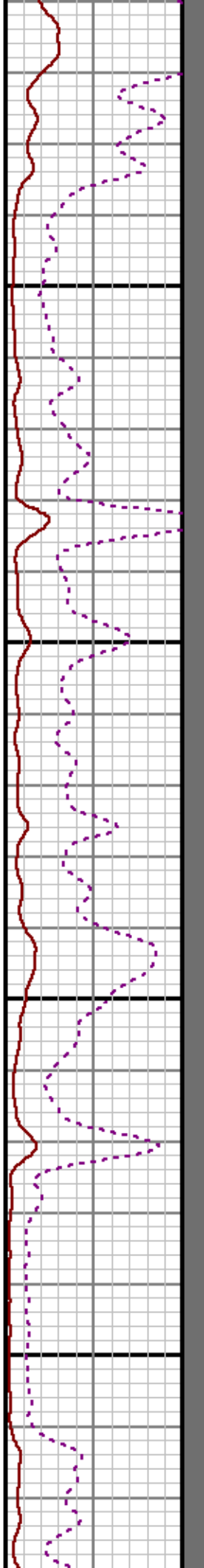
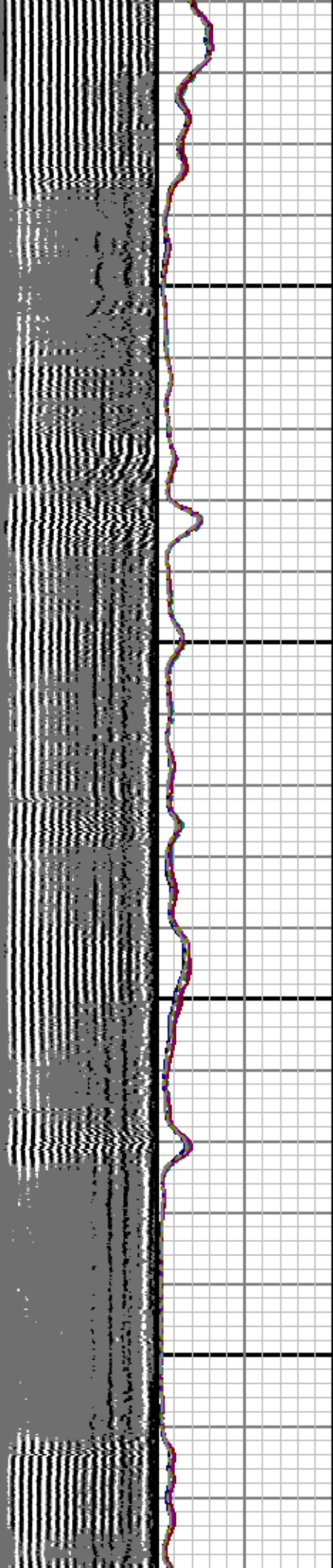


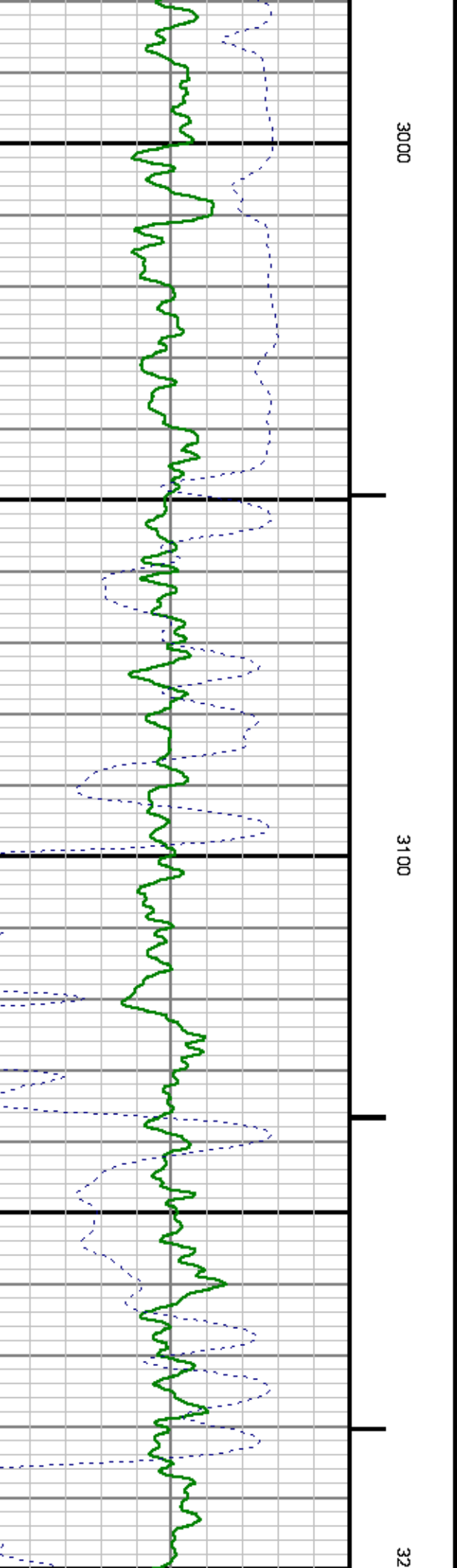
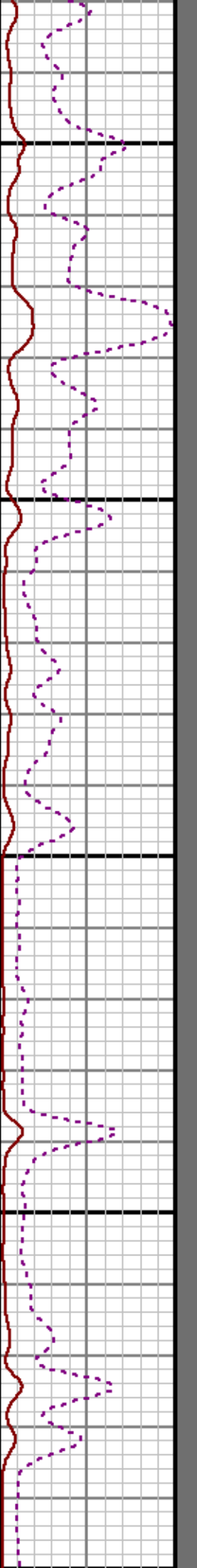
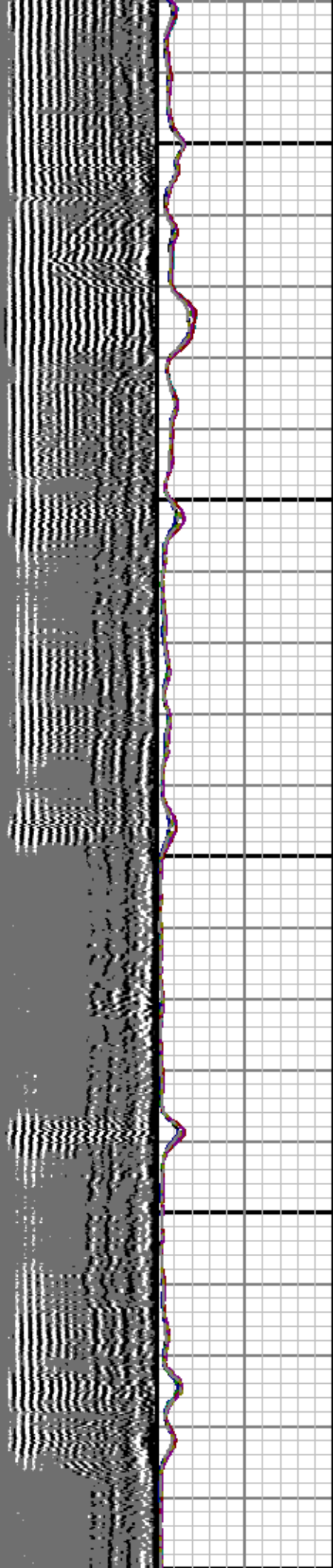
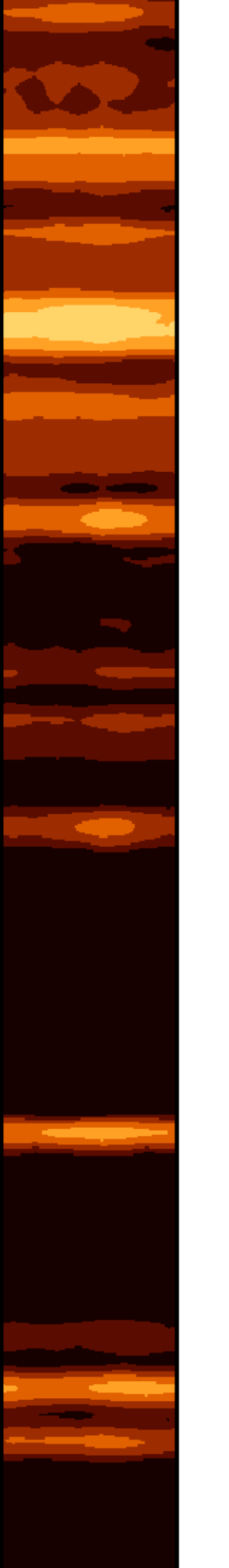


2600

2700



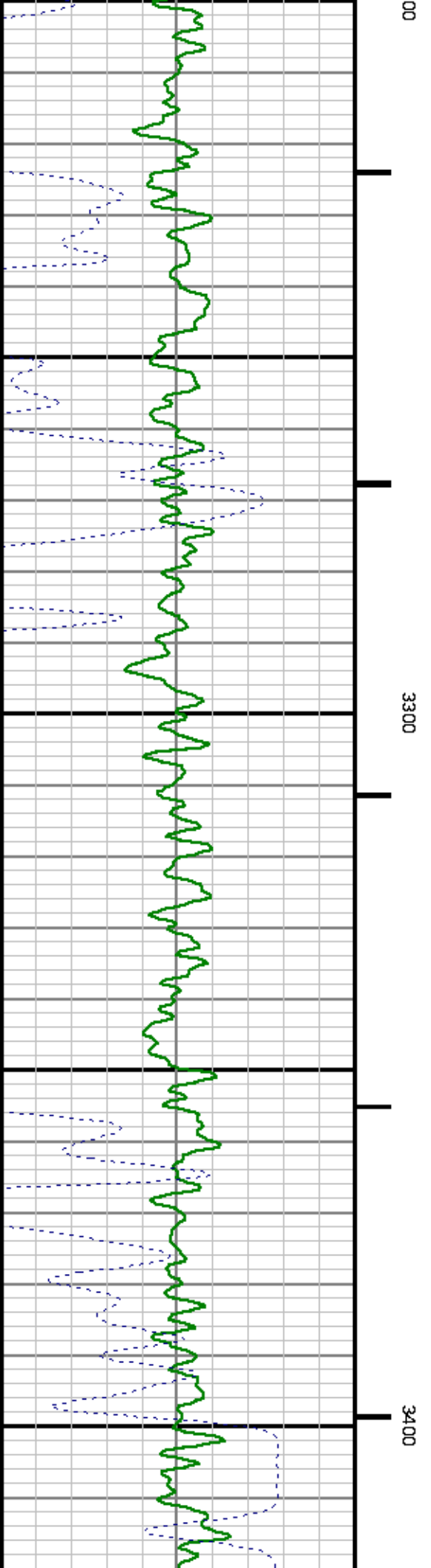
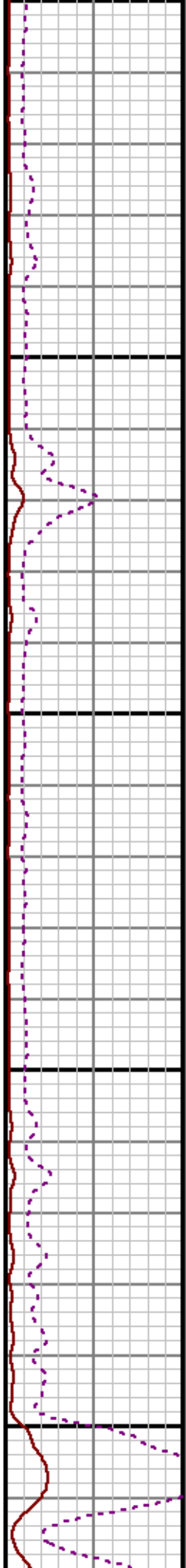
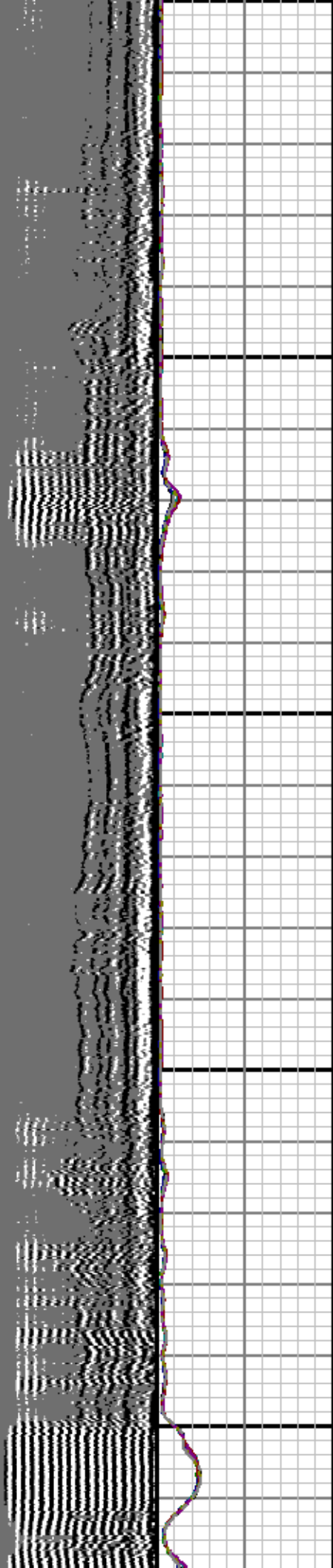
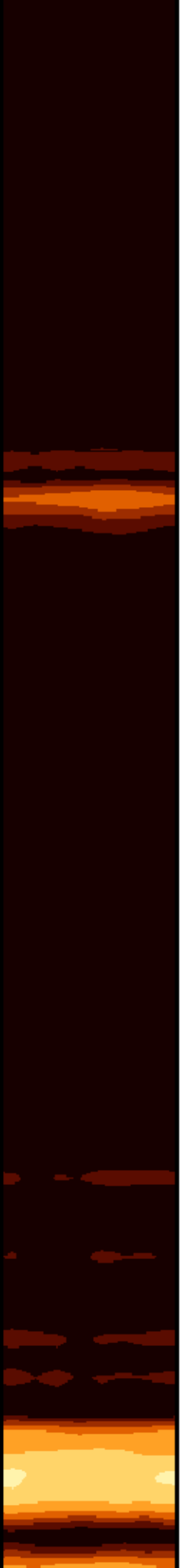


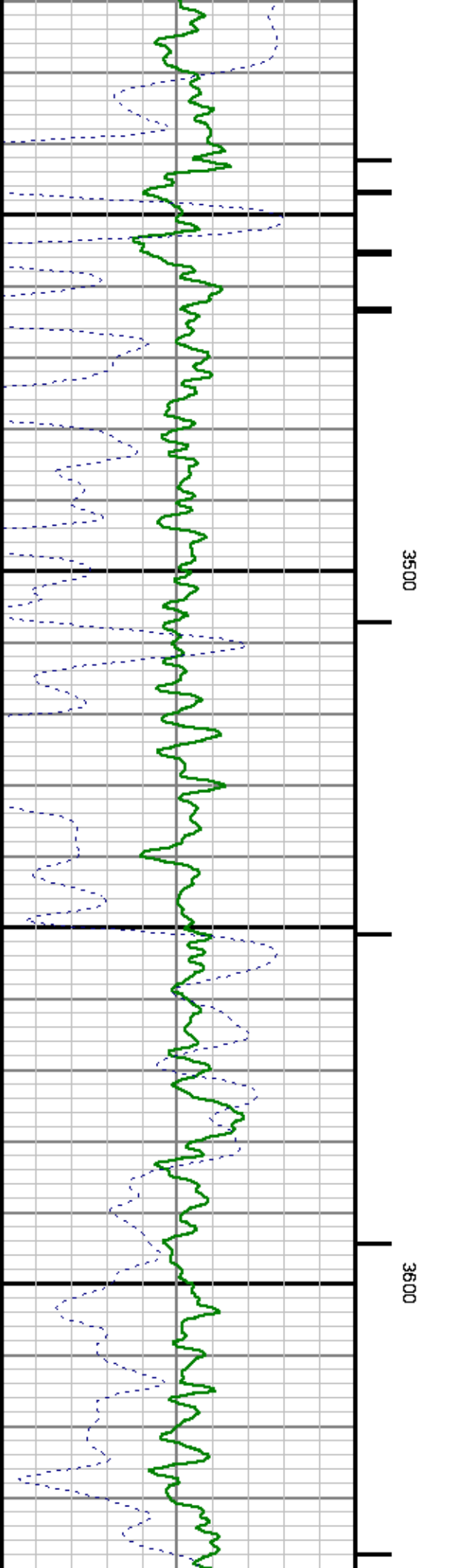
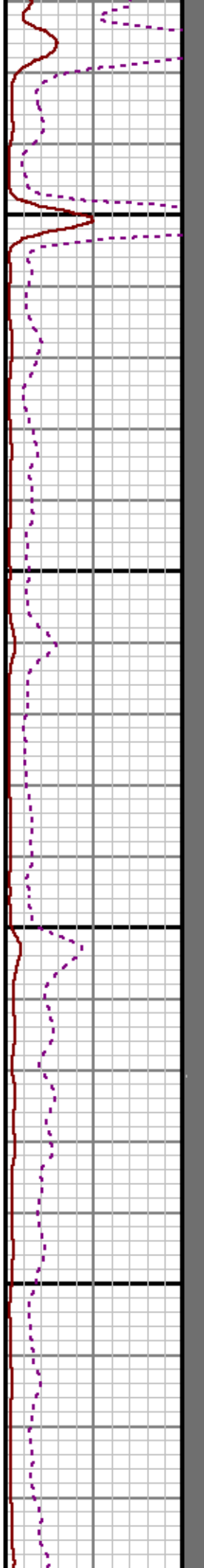
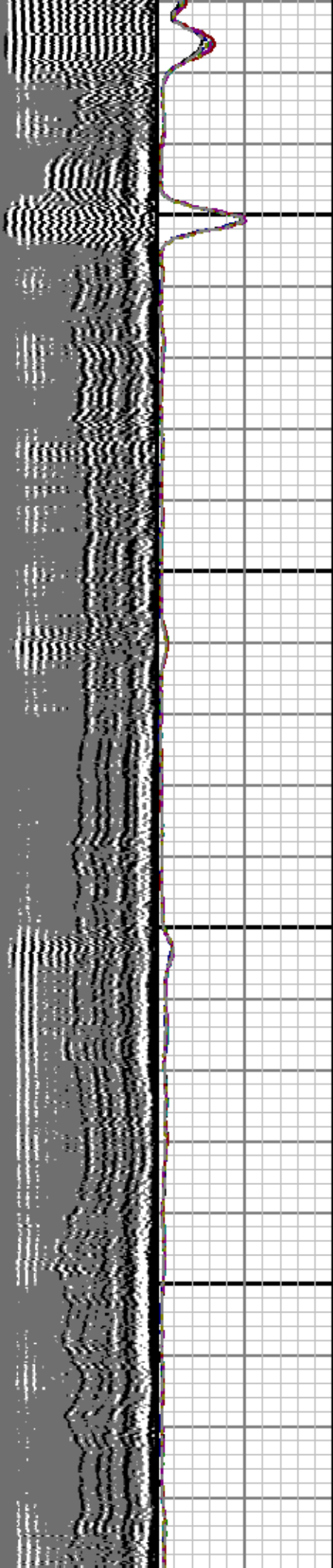
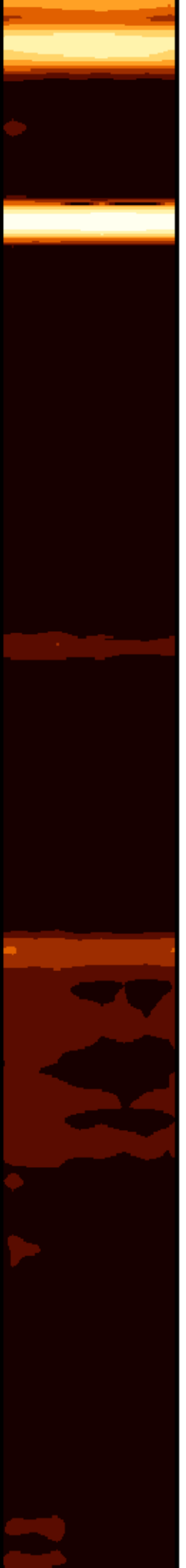


3000

3100

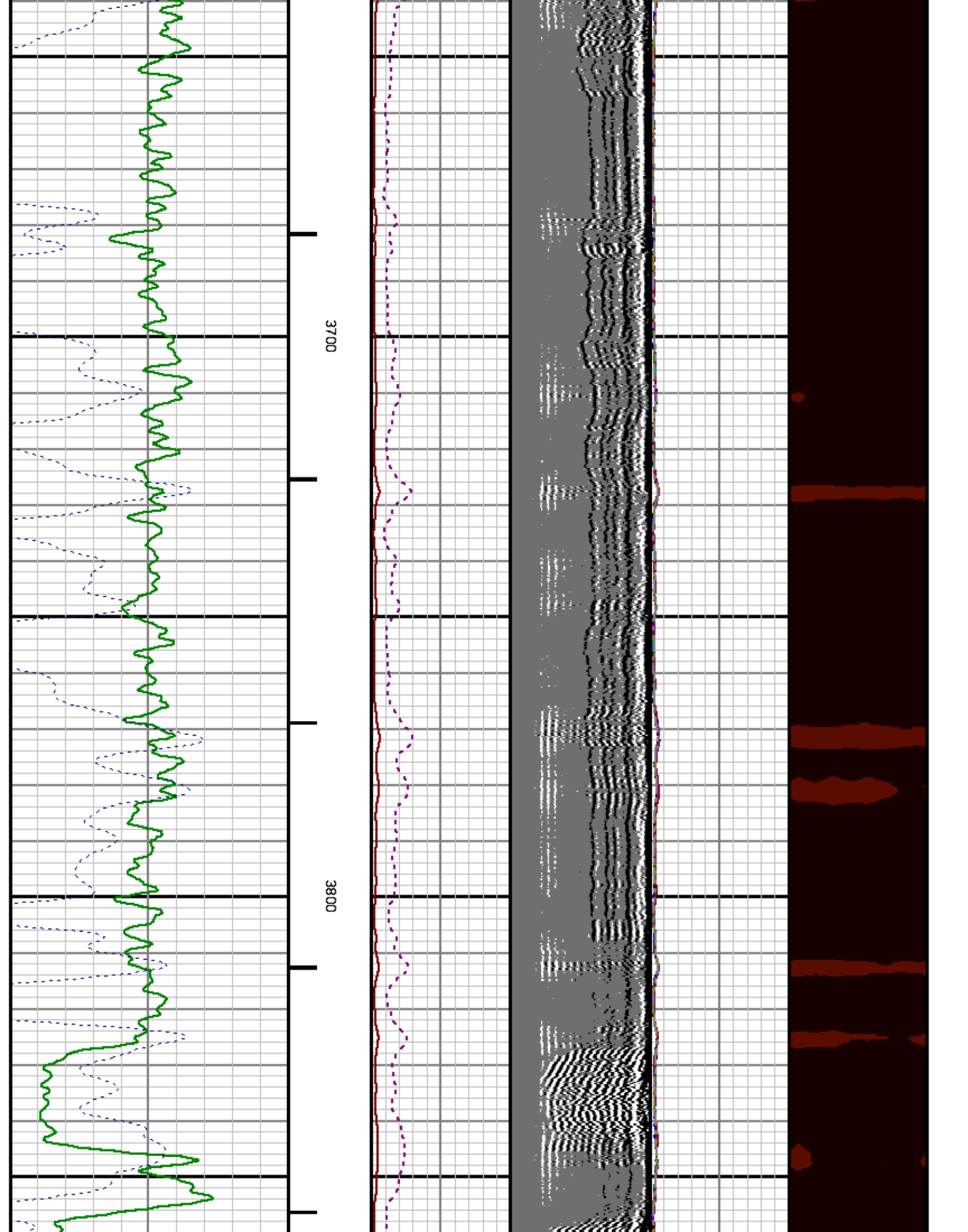
32

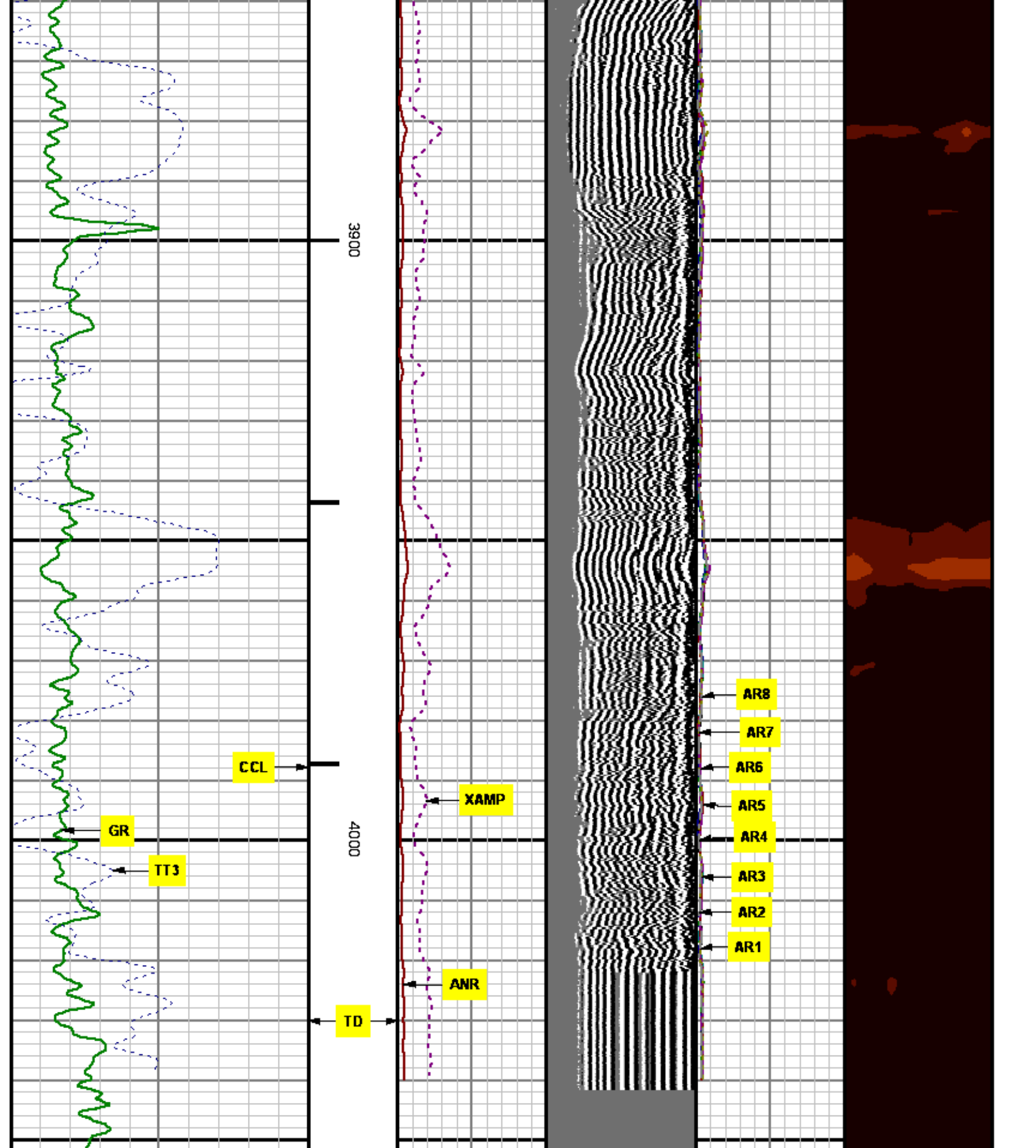




3500

3600

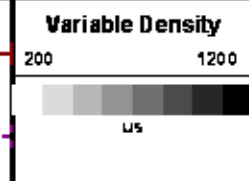




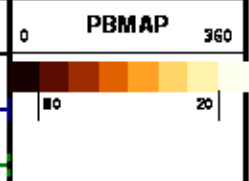
0	GR	150
300	gAPI	
	TT3	200
	Usec	

CCL
 500
 MD feet 1:240
 mv

0	ANR	100
	mv	
0	XAMP	20
	mv	



0	AR1	100
0	AR2	100
0	AR3	100
0	AR4	100
0	AR5	100



0	AR6	100
0	AR7	100
0	AR8	100

REPEAT SECTION

MEASUREMENT TYPE	PARAMETER	VALUE	UNITS	TOP	BOTTOM
RAL	Amp Gate Start Far	332.187	usec	3812.500	4055.000
RAL	Amp Gate Start Near	215.678	usec	3812.500	4055.000
RAL	Amp Gate Start Radial	215.678	usec	3812.500	4055.000
RAL	Amp Gate Width Far	25.000	usec	3812.500	4055.000
RAL	Amp Gate Width Near	25.000	usec	3812.500	4055.000
RAL	Amp Gate Width Radial	25.000	usec	3812.500	4055.000
RAL	casing od	5.500	inches	3812.500	4055.000
RAL	casing wt	15.500	lbm/ft	3812.500	4055.000
RAL	FB Start Far	307.187	usec	3812.500	4055.000
RAL	FB Start Near	190.678	usec	3812.500	4055.000
RAL	FB Start Radial	190.678	usec	3812.500	4055.000
RAL	FB Thresh Far	10.000	mv	3812.500	4055.000
RAL	FB Thresh Near	4.000	mv	3812.500	4055.000
RAL	FB Thresh Radial	4.000	mv	3812.500	4055.000
RAL	Fluid Travel Time	200.000	lusec/ft	3812.500	4054.973

DEPTH OFFSETS
(for Acquired Curves)

SERIES	DEPTH OFFSET	ACQUIRED CURVES
1426XA	-14.000	ACAL ANR AR1 AR2 AR3 AR4 AR5 AR6 AR7 AR8 CHV FPR2 FPR3 FPR5 TT3 TTR1 TTR2 TTR3 TTR4 TTR5 TTR6 TTR7 TTR8 XAMP
1426XA	-13.040	AFAR SIG TT5
1355XA	-5.620	CCL
1355XA	-1.500	GR
1355XA	0.000	TEMP

Created by : RAL, v4.8.008

Plotted by : PlotMgr, v5.4.504

Company : TRENDWELL WEST INC.

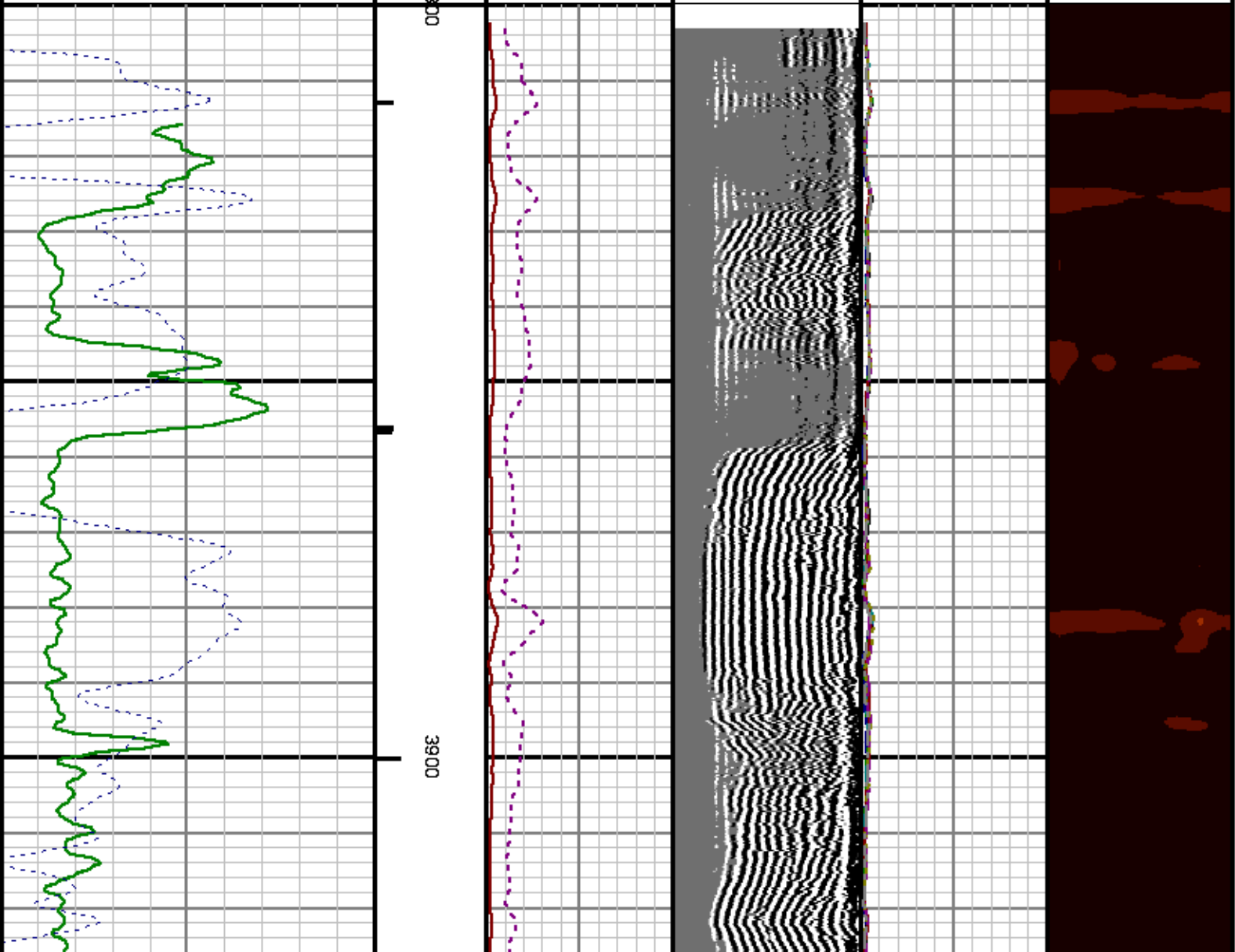
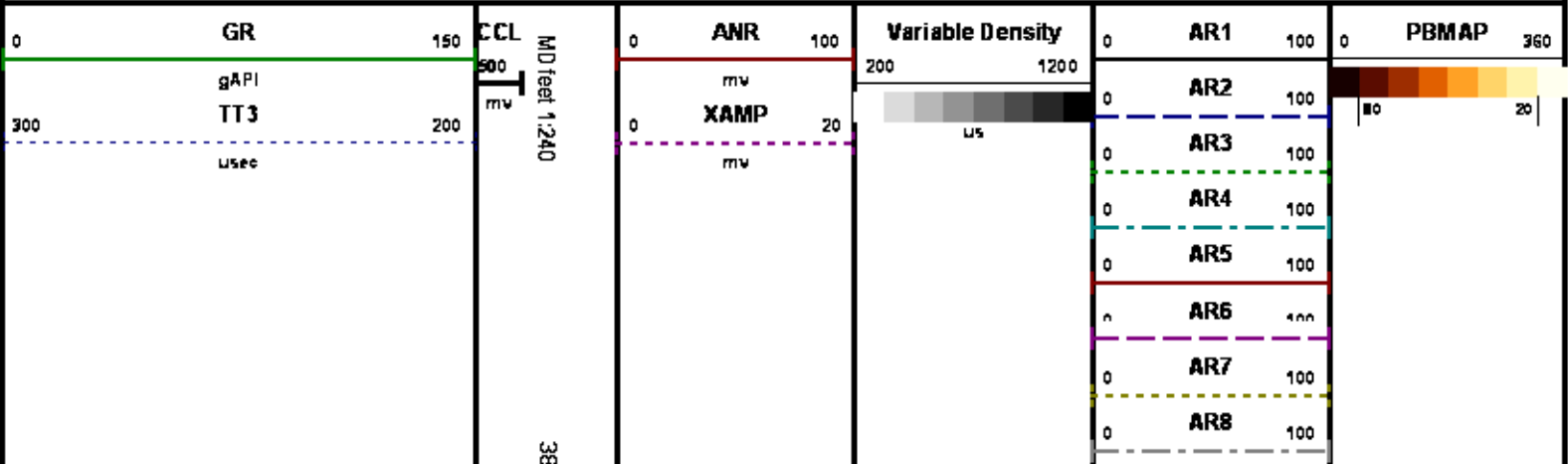
Well : SMITH 1-10

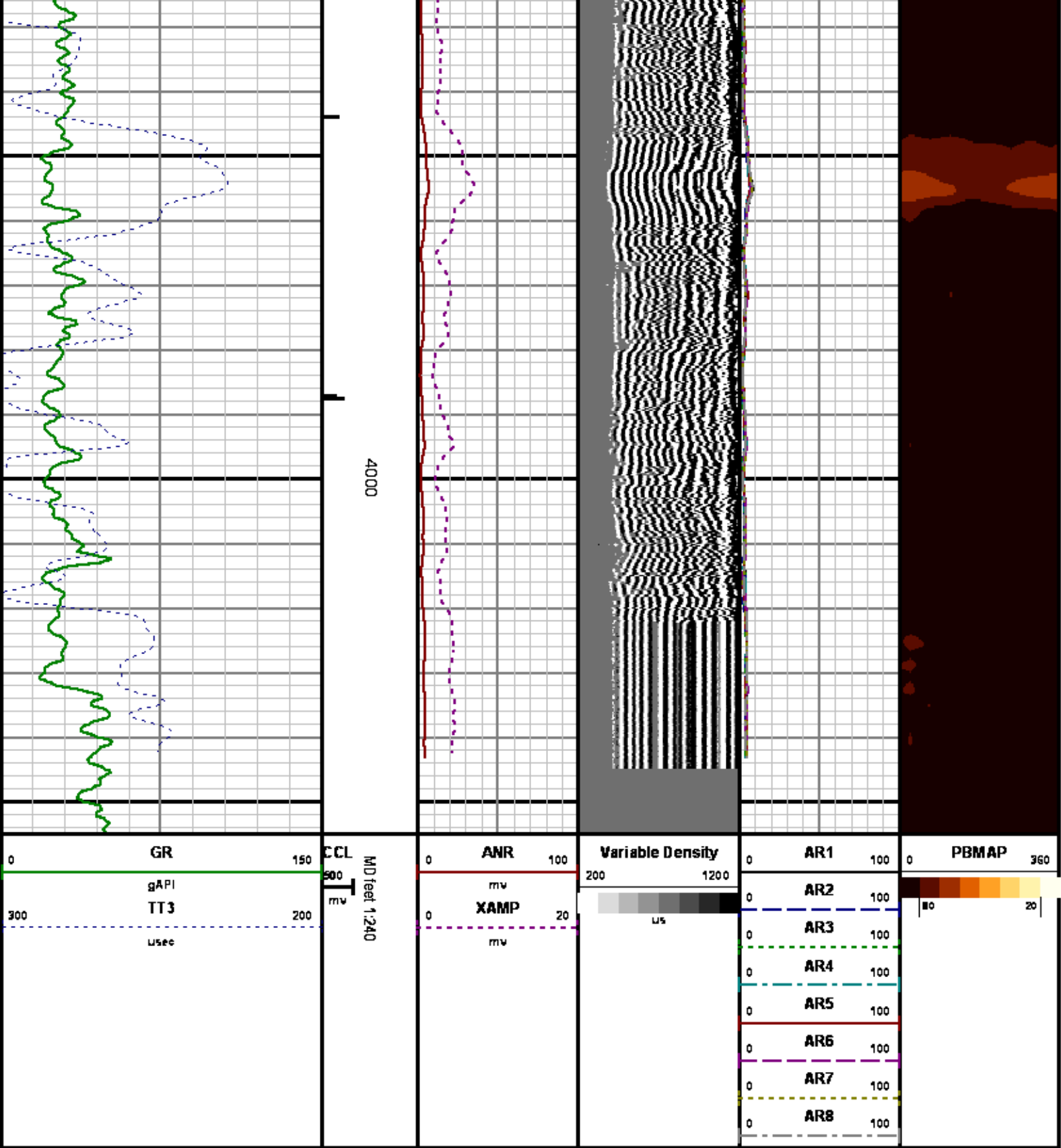
File Name : c:\well\data\10rad\repeat.xtf

Mode : PlotMgr 5.4.504

Interval : 3800.00 - 4055.00 feet UP

Created : 6/2/2014 11:52:06 AM





CALIBRATION SUMMARY

GAMMA RAY

Calibration File: C:\case\calver\GRA509M1.cal

CALIBRATION SUMMARY

DATE/TIME PERFORMED: Mon May 05 15:20:35 2014 TOOL SERIES: 1355XA ASSET: 509 SEQ: M1

Calibrator #	Background [cps]	Calibrator On [cps]	Multiplicative	Background [api]	Calibrator On [api]	Differential [api]
S2K DA601	51.07	182.89	0.759	38.74	138.74	100.00

Verification File: C:\case\calver\GRA509M1.VP

PRIMARY LOG VERIFICATION

DATE/TIME PERFORMED: Mon May 05 15:21:55 2014 TOOL SERIES: 1355XA ASSET: 509 SEQ: M1

Calibrator #	Background [cps]	Calibrator On [cps]	Multiplicative	Background [api]	Calibrator On [api]	Differential [api]
S2K DA601	52.13	186.58	0.759	39.55	141.54	101.99

RALSHP

Shop Calibration: C:\case\calver\RALSHP451J1_shp.cal

SHOP CALIBRATION SUMMARY

DATE/TIME PERFORMED: Sun Jun 01 10:40:25 2014 TOOL SERIES: 1426XA ASSET: 451 SEQ: J1

Tool Delay [usec] Tank OD in Tank Wt lbs/ft Tank ID in

RECEIVER	Travel Time [usec]	Amp. Gate Start [usec]	Amp. Gate Width [usec]	Zero Gate Start [usec]	Zero Gate Width [usec]	Zero Amp. [mV]	Amp Ref. [mV]	Shop Factor
CAL Pulse	<input type="text" value="220"/>	<input type="text" value="216"/>	<input type="text" value="30"/>	<input type="text" value="166"/>	<input type="text" value="25"/>	<input type="text" value="0.194"/>	<input type="text" value="100.00"/>	<input type="text" value="0.53"/>
3 Ft. Receiver	<input type="text" value="224"/>	<input type="text" value="216"/>	<input type="text" value="30"/>	<input type="text" value="166"/>	<input type="text" value="25"/>	<input type="text" value="0.867"/>	<input type="text" value="100.00"/>	<input type="text" value="0.53"/>
5 Ft. Receiver	<input type="text" value="332"/>	<input type="text" value="329"/>	<input type="text" value="30"/>	<input type="text" value="122"/>	<input type="text" value="25"/>	<input type="text" value="-1.183"/>	<input type="text" value="150.00"/>	<input type="text" value="0.65"/>
Radial #1	<input type="text" value="224"/>	<input type="text" value="216"/>	<input type="text" value="30"/>	<input type="text" value="166"/>	<input type="text" value="25"/>	<input type="text" value="-0.267"/>	<input type="text" value="100.00"/>	<input type="text" value="0.53"/>
Radial #2	<input type="text" value="224"/>	<input type="text" value="216"/>	<input type="text" value="30"/>	<input type="text" value="166"/>	<input type="text" value="25"/>	<input type="text" value="0.522"/>	<input type="text" value="100.00"/>	<input type="text" value="0.53"/>
Radial #3	<input type="text" value="224"/>	<input type="text" value="216"/>	<input type="text" value="30"/>	<input type="text" value="166"/>	<input type="text" value="25"/>	<input type="text" value="0.833"/>	<input type="text" value="100.00"/>	<input type="text" value="0.53"/>
Radial #4	<input type="text" value="224"/>	<input type="text" value="216"/>	<input type="text" value="30"/>	<input type="text" value="166"/>	<input type="text" value="25"/>	<input type="text" value="0.850"/>	<input type="text" value="100.00"/>	<input type="text" value="0.53"/>
Radial #5	<input type="text" value="224"/>	<input type="text" value="216"/>	<input type="text" value="30"/>	<input type="text" value="166"/>	<input type="text" value="25"/>	<input type="text" value="0.578"/>	<input type="text" value="100.00"/>	<input type="text" value="0.53"/>
Radial #6	<input type="text" value="222"/>	<input type="text" value="216"/>	<input type="text" value="30"/>	<input type="text" value="166"/>	<input type="text" value="25"/>	<input type="text" value="0.744"/>	<input type="text" value="100.00"/>	<input type="text" value="0.53"/>
Radial #7	<input type="text" value="220"/>	<input type="text" value="216"/>	<input type="text" value="30"/>	<input type="text" value="166"/>	<input type="text" value="25"/>	<input type="text" value="0.781"/>	<input type="text" value="100.00"/>	<input type="text" value="0.52"/>
Radial #8	<input type="text" value="224"/>	<input type="text" value="216"/>	<input type="text" value="30"/>	<input type="text" value="166"/>	<input type="text" value="25"/>	<input type="text" value="0.894"/>	<input type="text" value="100.00"/>	<input type="text" value="0.53"/>

RALFLD

Wellsite Calibration: C:\case\calver\RALFLD451J2 fld.cal

WELLSITE CALIBRATION SUMMARY

DATE/TIME PERFORMED: Mon Jun 02 10:07:55 2014 TOOL SERIES: 1428XA ASSET: 451 SEQ: J2

Tool Delay [usec] Casing OD Casing Wt Casing ID

RECEIVER	Zero Gate Start [usec]	Zero Gate Width [usec]	Zero Amp. [mV]	Full Amp. [mV]	Wellsite Factor	Amp. Ref [mV]
CAL Pulse	<input type="text" value="166"/>	<input type="text" value="25"/>	<input type="text" value="-0.091"/>	<input type="text" value="0.000"/>	<input type="text" value="0.98"/>	<input type="text" value="100.000"/>
3 Ft. Receiver	<input type="text" value="216"/>	<input type="text" value="30"/>	<input type="text" value="0.742"/>			
5 Ft. Receiver	<input type="text" value="136"/>	<input type="text" value="30"/>	<input type="text" value="-0.715"/>			
Radial #1	<input type="text" value="216"/>	<input type="text" value="30"/>	<input type="text" value="0.586"/>			
Radial #2	<input type="text" value="216"/>	<input type="text" value="30"/>	<input type="text" value="0.818"/>			
Radial #3	<input type="text" value="216"/>	<input type="text" value="30"/>	<input type="text" value="1.009"/>			
Radial #4	<input type="text" value="216"/>	<input type="text" value="30"/>	<input type="text" value="0.640"/>			
Radial #5	<input type="text" value="216"/>	<input type="text" value="30"/>	<input type="text" value="0.569"/>			
Radial #6	<input type="text" value="216"/>	<input type="text" value="30"/>	<input type="text" value="0.594"/>			
Radial #7	<input type="text" value="216"/>	<input type="text" value="30"/>	<input type="text" value="0.638"/>			
Radial #8	<input type="text" value="216"/>	<input type="text" value="30"/>	<input type="text" value="0.476"/>			

TEMPERATURE

Calibration File: C:\case\calver\TEMP\509J1.cal

CALIBRATION SUMMARY

DATE/TIME PERFORMED: Mon Jun 02 10:08:13 2014 TOOL SERIES: 1355XA ASSET: 509 SEQ: J1

Tool Type Additive Multiplicative

TOOL DIAGRAM

OTA SHORT CABLE HEAD

CENTRALIZER

Series RALCENT
 Mnemonic CENT
 Diameter 3.12"
 Weight 20.00 lb



24.66'

PROBE 2 3/4 DUAL RECEIVER RADII (1426XA)

CENTRALIZER

Series	RALCENT
Mnemonic	CENT
Diameter	3.12"
Weight	20.00 lb

RAL GR/TEMP/CCL/CHV DETECTOR (1355XA)

XMIT 15.59'

NEAR RCVR 12.51'

FAR RCVR 10.59'

CCL 5.79'

GR 1.67'

TEMP 0.17'
0.00'

Total Length: 24.66'
Total Weight: Not Available
Max Diameter: 0' 3.12"



Company	TRENDWELL WEST INC.		
Well	SMITH 1-10		
Field	WILDCAT		
County	CANYON	State	IDAHO

File No:	EG001
API No:	11027200030000

Location:

SEC: 10 TWP: 5N RGE: 4E

Elevations

KB 2449 ft
DF 2448 ft
GL 2437 ft