



FILE NO: 83296
 COMPANY: TRENDWELL ENERGY CORP
 WELL: SMITH 1-10
 FIELD: WILDCAT
 COUNTY: CANYON
 STATE: IDAHO

API NO: 11-027-20003
 LOCATION: HDIL, ZDL-CN, MREX, COREGUN, DIRSUR
 OTHER SERVICES

Ver. 3.87
 SHL: 3300' FSL & 1820' FEL
 SEC 10 TWP 5N RGE 4W
 ELEVATIONS: KB 2449 FT, DF, GL 2437 FT

PERMANENT DATUM: GL ELEVATION 2437 FT
 LOG MEASURED FROM: KB 12 FT ABOVE P.D.
 DRILL. MEAS. FROM: KB

DATE	24-MAR-2014	
RUN	TRIP	1
SERVICE ORDER	US647718	
DEPTH DRILLER	4182 FT	
DEPTH LOGGER	4178 FT	
BOTTOM LOGGED INTERVAL	4178 FT	
TOP LOGGED INTERVAL	1007 FT	
CASING DRILLER	8.625 IN @ 1008 FT	
CASING LOGGER	1007 FT	
BIT SIZE	7.875 IN	
TYPE OF FLUID IN HOLE	WBM	
DENSITY	10.5 LB/G	50 S
PH	7.5	4.0 C3
SOURCE OF SAMPLE	FLOWLINE	
RM AT MEAS. TEMP.	1.67 OHMM	@ 68.0 DEGF
RMF AT MEAS. TEMP.	1.31 OHMM	@ 67.4 DEGF
RMC AT MEAS. TEMP.	1.92 OHMM	@ 68.0 DEGF
SOURCE OF RMI	RMC	MEASURED
RM AT BHT	0.69 OHMM	@ 175.7 DEGF
TIME SINCE CIRCULATION	5 HOURS	
MAX. RECORDED TEMP.	175.7 DEGF	
EQUIP. NO.	HL 6685	CASPER
RECORDED BY	KOGHNERCIMA/KZENT	
WITNESSED BY	SANDTVEIT/STEWART	

IN MAKING INTERPRETATIONS OF LOGS OUR EMPLOYEES WILL GIVE THE CUSTOMER THE BENEFIT OF THEIR BEST JUDGEMENT. BUT SINCE ALL INTERPRETATIONS ARE OPINIONS BASED ON INFERENCES FROM ELECTRICAL OR OTHER MEASUREMENTS, WE CANNOT, AND WE DO NOT GUARANTEE THE ACCURACY OR CORRECTNESS OF ANY INTERPRETATION. WE SHALL NOT BE LIABLE OR RESPONSIBLE FOR ANY LOSS, COST, DAMAGES, OR EXPENSES WHATSOEVER INCURRED OR SUSTAINED BY THE CUSTOMER RESULTING FROM ANY INTERPRETATION MADE BY ANY OF OUR EMPLOYEES.

REMARKS

RUN 2 TRIP 1: HDIL-ZDL-CN-GR RUN IN COMBINATION

LAST CIRCULATED ON 24-MAR-14 AT 15:30
 MAIN LOG OFF BOTTOM ON 24-MAR-14 AT 20:40

BVOL AND CVOL PRESENTED IN CUBIC FEET
 CVOL CALCULATED USING 5.5" CASING
 CALIPER VERIFIED IN CASING

THANK YOU FOR CHOOSING BAKER HUGHES WIRELINE
 RIG: PGDS 7
 CREW: J. MORTON

EQUIPMENT DATA						
RUN	TRIP	TOOL	SERIES NO.	SERIAL NO.	POSITION	
1	1	TTRM	3981XA	10107066	FREE	
1	1	WTS	3514XB	10308615	FREE	
1	1	SP	3966XA	10390275	FREE	
1	1	DSL	1329XA	153150	DECENTRALIZED	

1	1	CN	2446XA	10068420	DECENTRALIZED
1	1	ZDL	2234XA	10415656	PAD DEVICE - DECENT
1	1	KNJT	3939XA	12396931	FREE
1	1	HDIL	1515EA/1515MA	10326306/364355	STOOD OFF

MAIN LOG 2"/100FT SCALE

ECLIPS 6.2i ECLIPS General Release Rel 6.2i Wed Jun 12 12:21:40 CDT 2013
Patches: 5

Plotted: Tue Mar 25 00:47:12 2014

PARAMETER AND FILTER SUMMARY REPORT

FILE: /dat1a/83295/n876msp04.prm
 LOGGING MODE: DEPTH DIRECTION: UP
 TOP DEPTH: 3412.666 ft BOTTOM DEPTH: 4189.592 ft

SYMMETRIC FILTER					
MEASUREMENT TYPE	PARAMETER	VALUE	UNITS	INTERVAL (ft)	
Y AXIS CALIPER	FILTER Ø	medium (1)		TOP	BOTTOM
TENSION	FILTER Ø	medium (1)		"	"
GR	FILTER Ø	medium (1)		"	"
CALIPER	FILTER Ø	medium (1)		"	"
	FILTER (.h)	medium (1)		"	"
	FILTER (.i)	medium (1)		"	"

BOREHOLE & CEMENT					
MEASUREMENT TYPE	PARAMETER	VALUE	UNITS	INTERVAL (ft)	
CASING - BOREHOLE & CEMENT VOLUME	CASING O.D.	5.500	in	TOP	BOTTOM
BIT SIZE	BIT SIZE	7.875	in	"	"

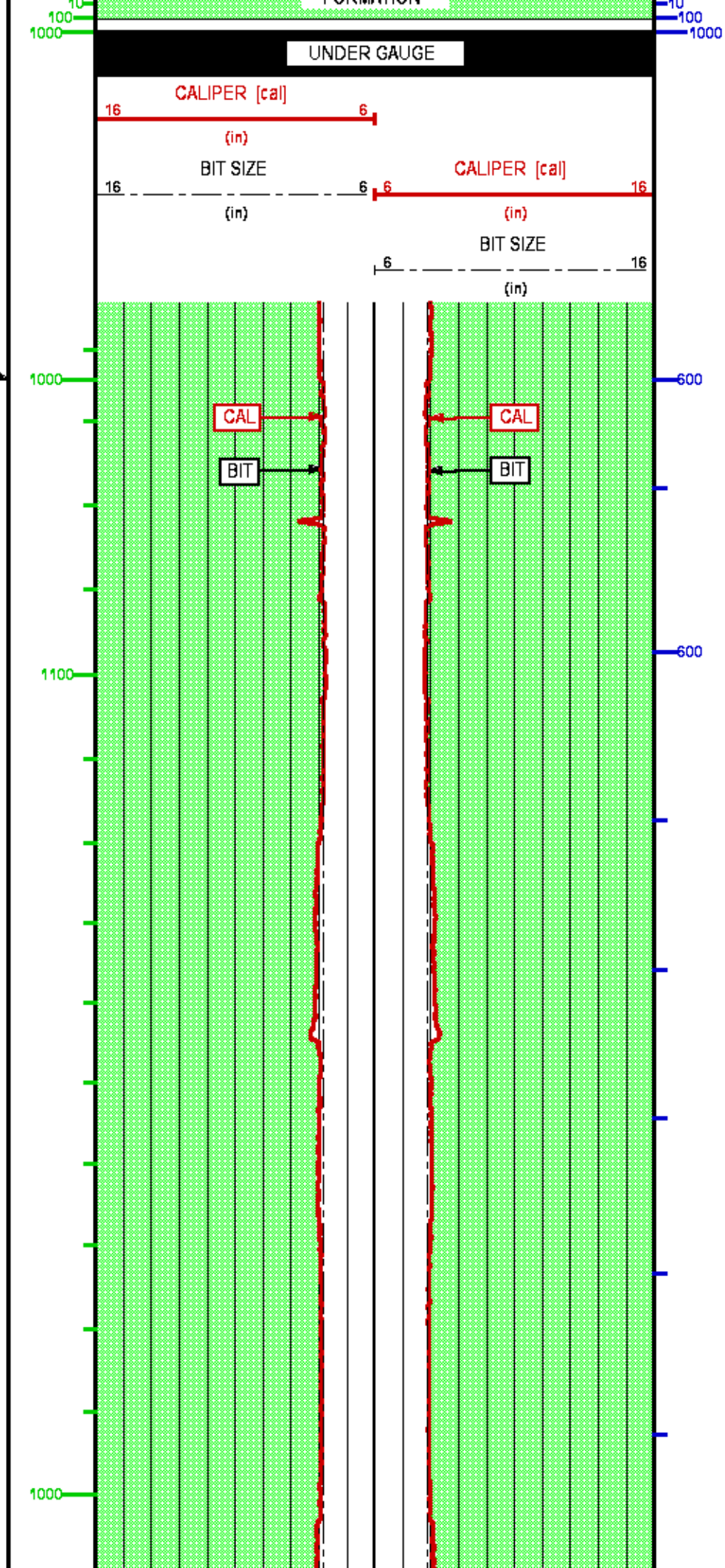
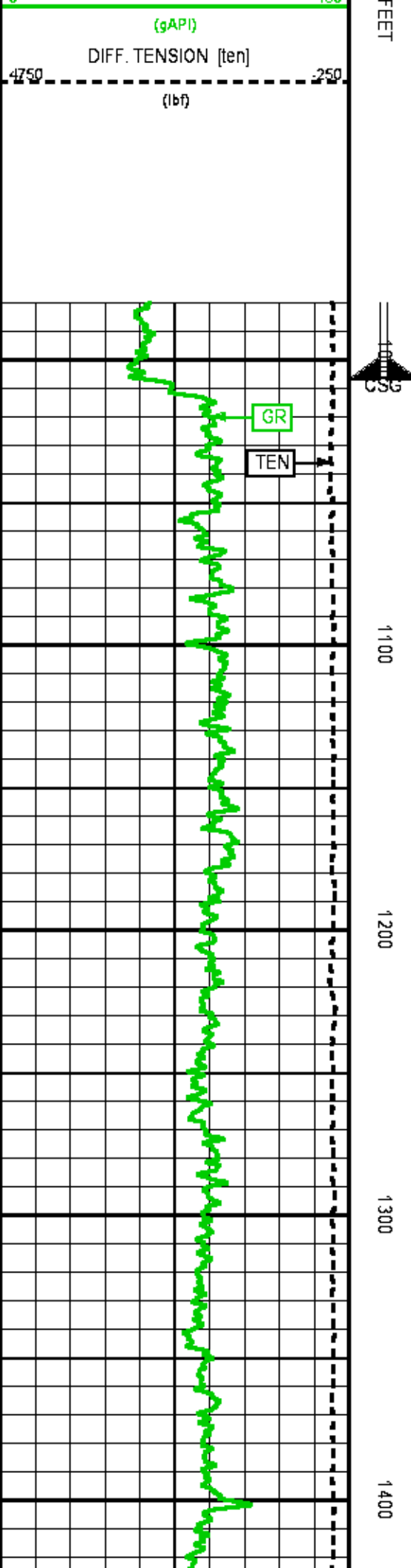
CURVE DESCRIPTION REPORT		
CURVE NAME	CREATION DATE	CURVE DESCRIPTION
F1:BIT	Mar 24 20:40:22 2014	BIT SIZE
F1:BVOL	Mar 24 20:40:22 2014	BOREHOLE VOLUME
F1:CAL	Mar 24 20:40:22 2014	CALIPER
F1:CVOL	Mar 24 20:40:22 2014	CEMENT VOLUME
F1:GR	Mar 24 20:40:22 2014	GAMMA RAY
F1:TEN	Mar 24 20:40:22 2014	DIFFERENTIAL TENSION

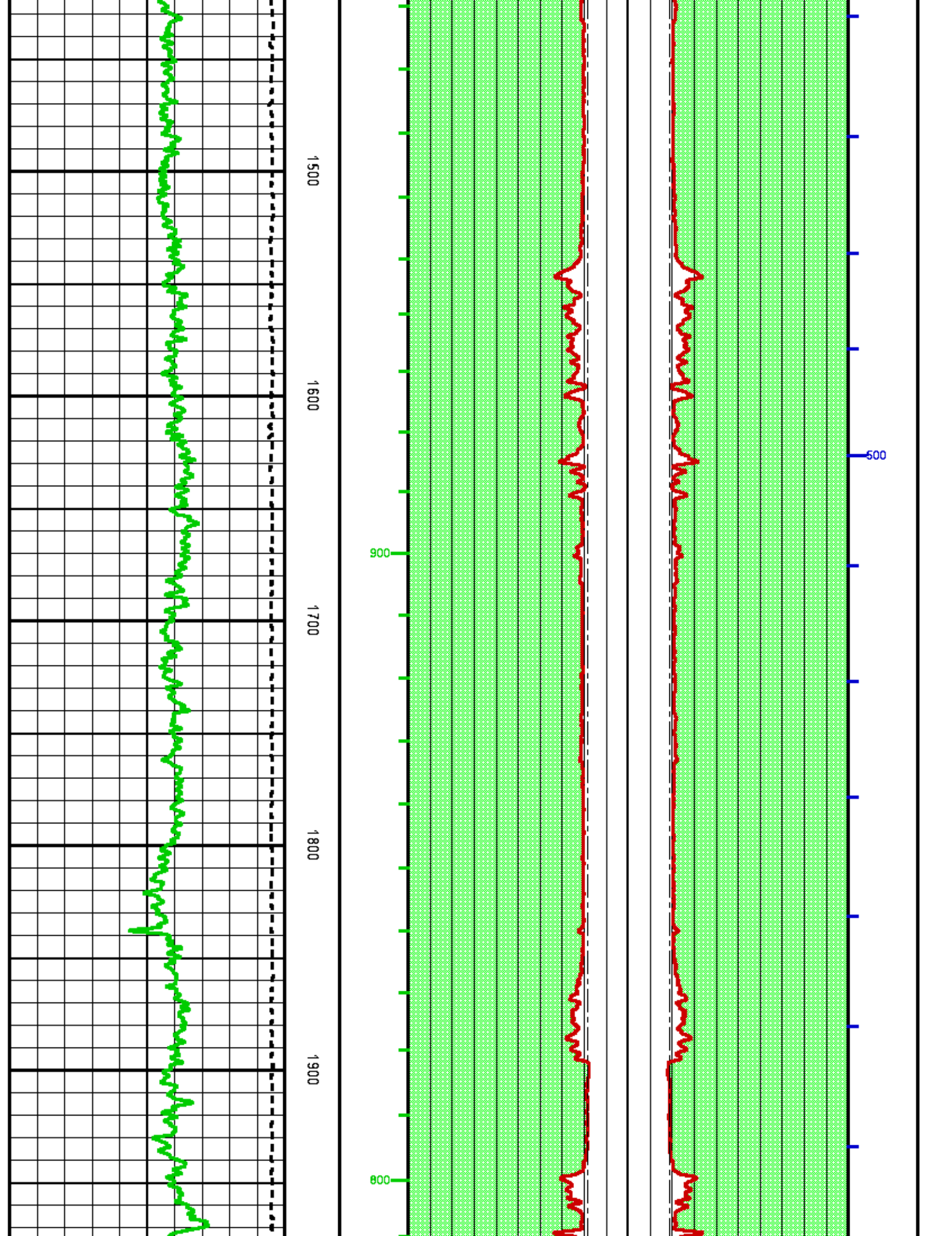
CURVE MEASURE POINT OFFSET							
CURVE	OFFSET (ft)	CURVE	OFFSET (ft)	CURVE	OFFSET (ft)	CURVE	OFFSET (ft)
BIT	0.00	CAL	35.00	GR	52.25	TEN	0.00

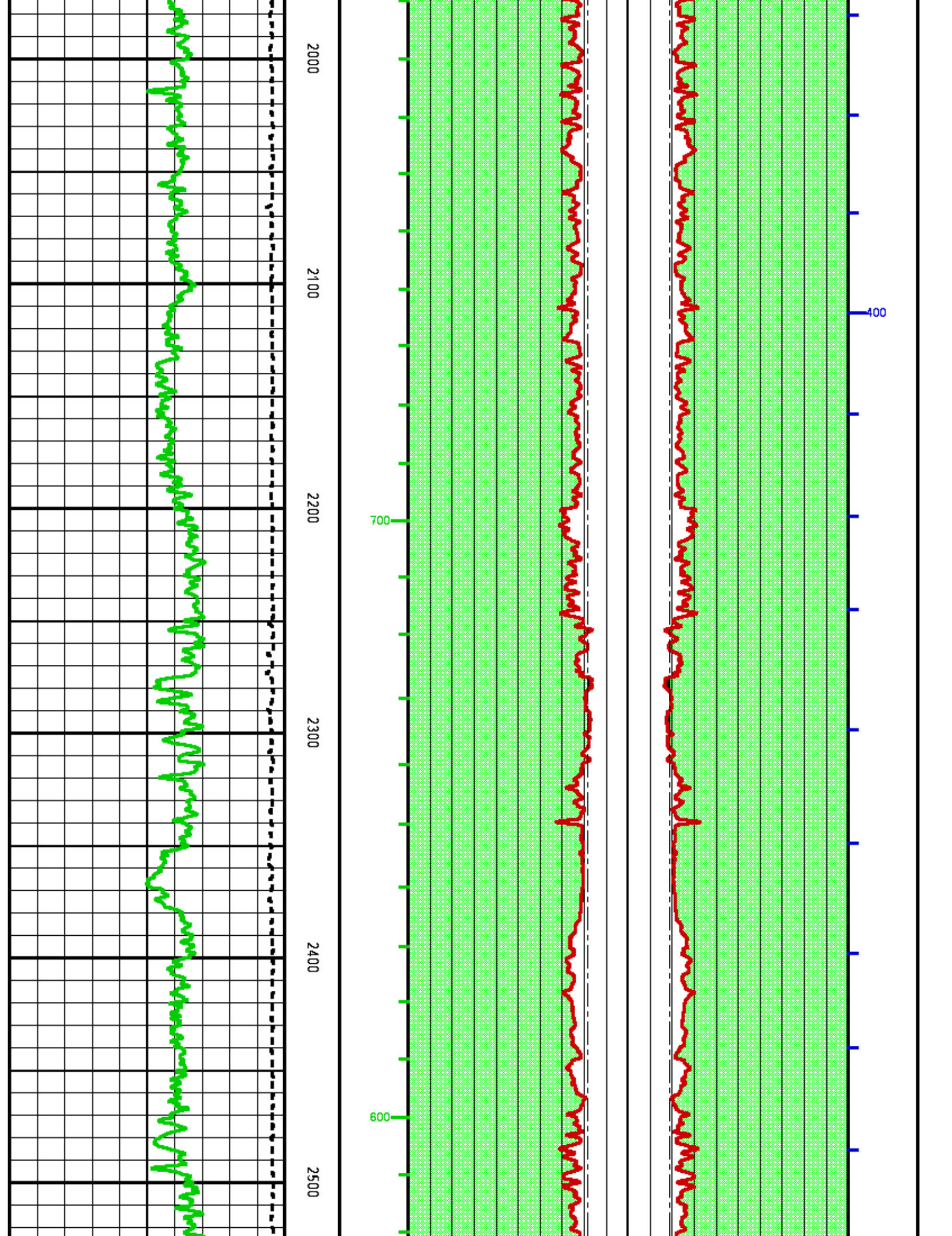
Presentation : cas6685:/dat1a/83295/bhp1cal.fvpdf [2"/100' Scale]
Plot Interval : 980 - 4200 Feet

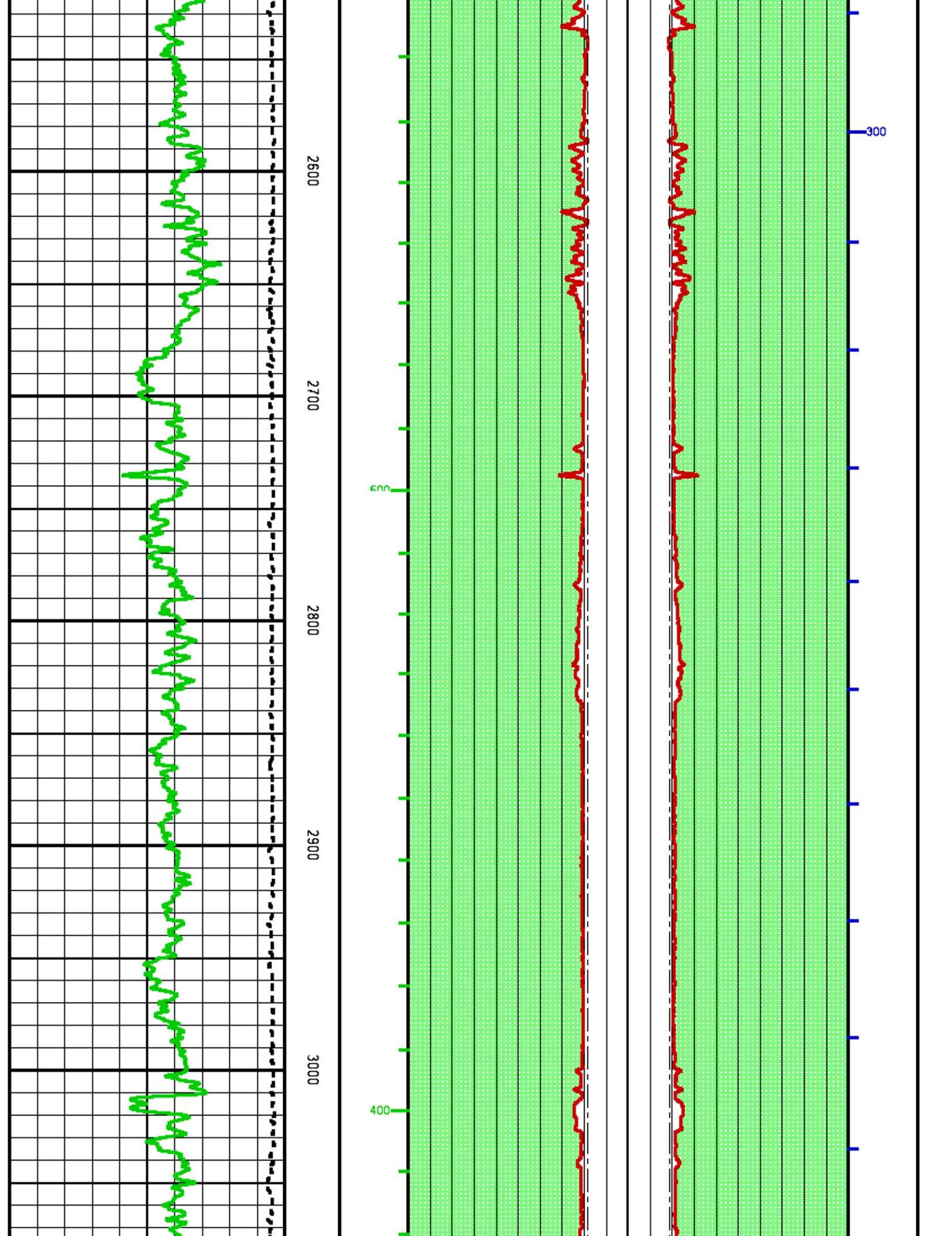
Data File 1 : F1 : cas6685:/dat1a/83295/main_bottom.xtf
Created On : Mar 24 20:40:22 2014
Company : TRENDWELL ENERGY CORP
Well : SMITH 1-10
Field : WILDCAT
File Interval : -40.5 - 4186.25 Feet
OCT : n876msp

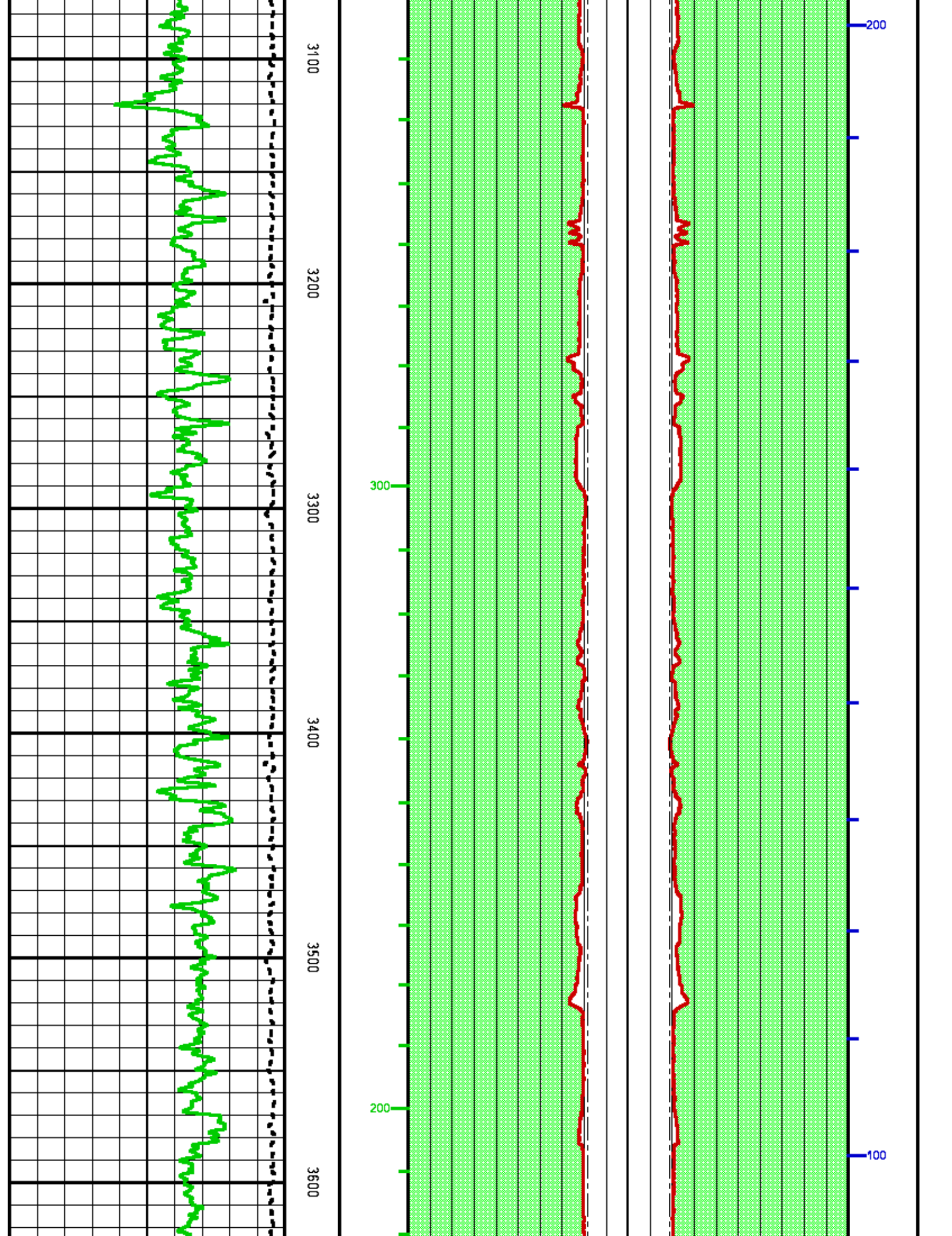
GAMMA RAY [gr]	BVOL	FORMATION	CVOL
----------------	------	-----------	------

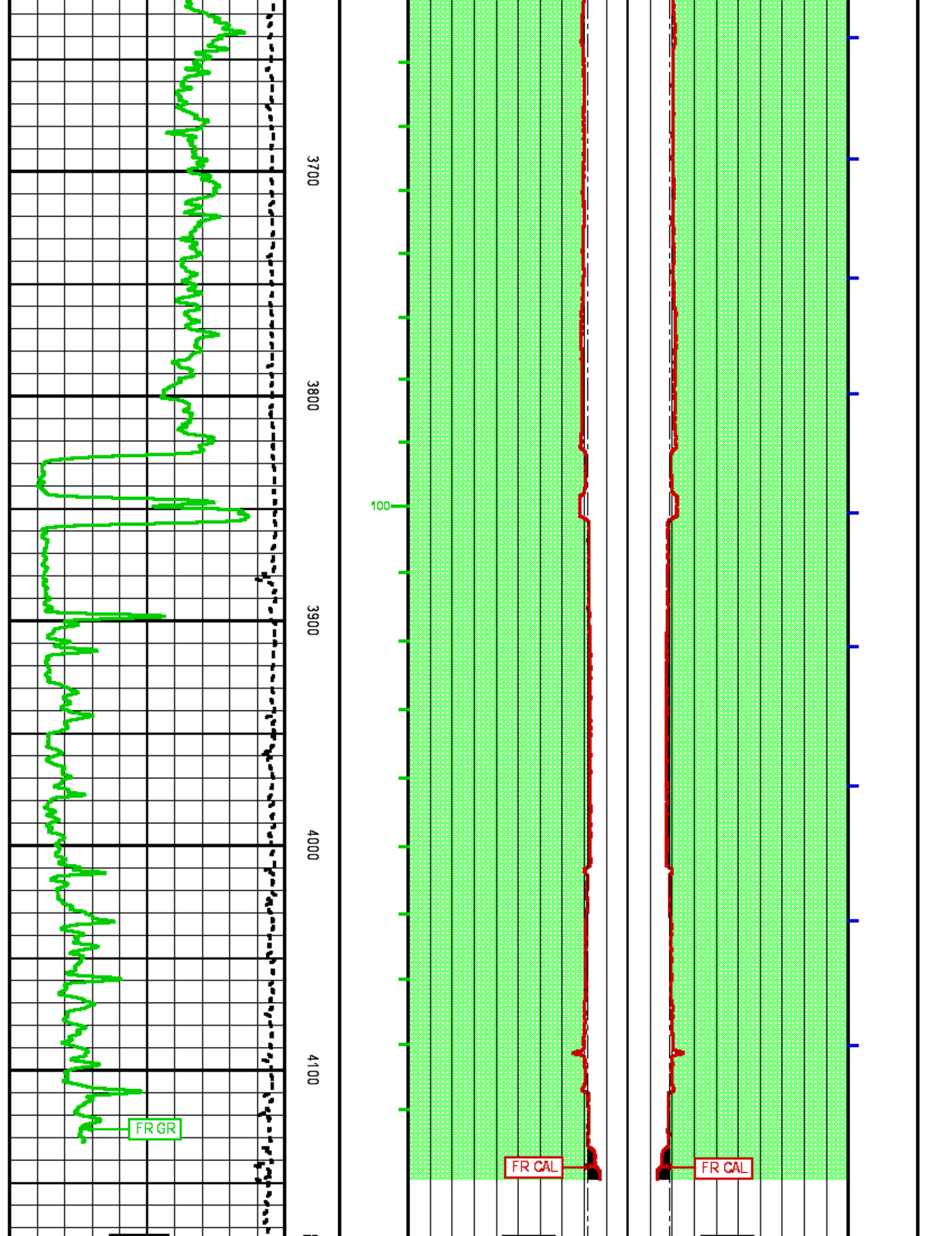


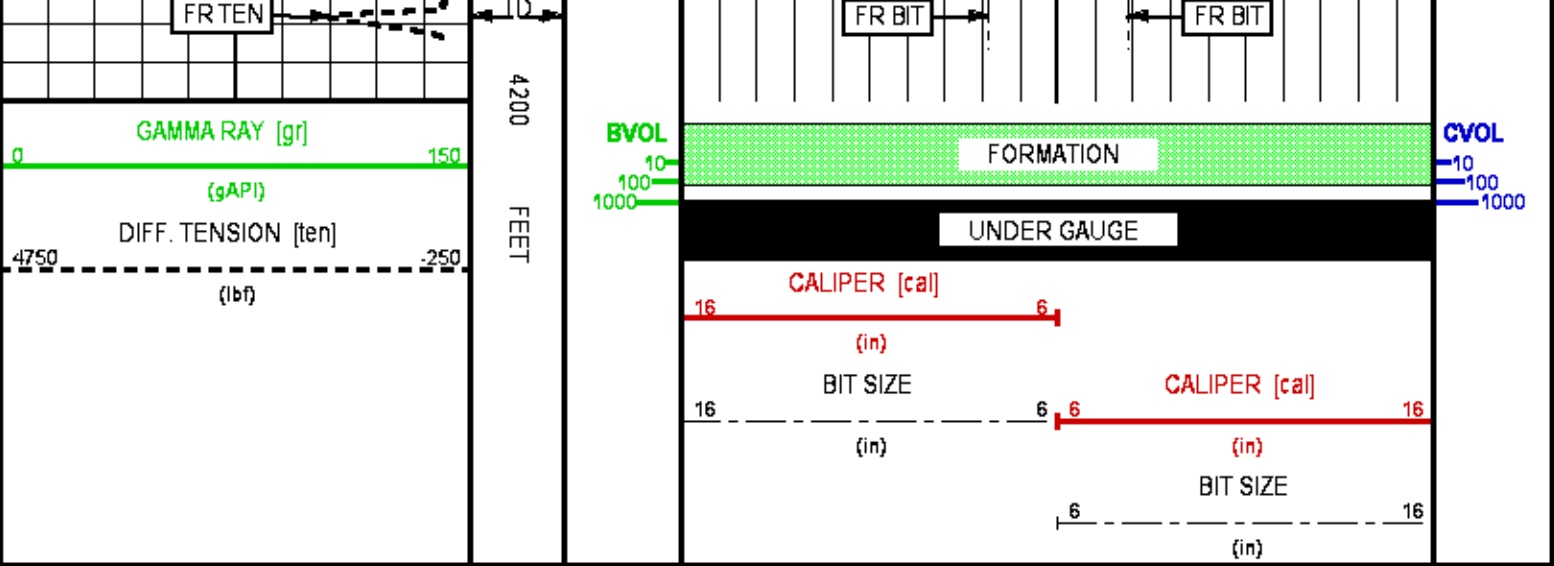













	COMPANY <u>TRENDWELL ENERGY CORP</u> WELL <u>SMITH 1-10</u> FIELD <u>WILDCAT</u> COUNTY <u>CANYON</u> STATE <u>IDAHO</u>	FILE NO: <u>83296</u> API NO: <u>11-027-20003</u>	
	LOCATION: SHL: 3300' FSL & 1820' FEL SEC <u>10</u> TWP <u>5N</u> RGE <u>4W</u>	ELEVATIONS: KB <u>2449 FT</u> DF GL <u>2437 FT</u>	
	DATE <u>24-MAR-2014</u>		