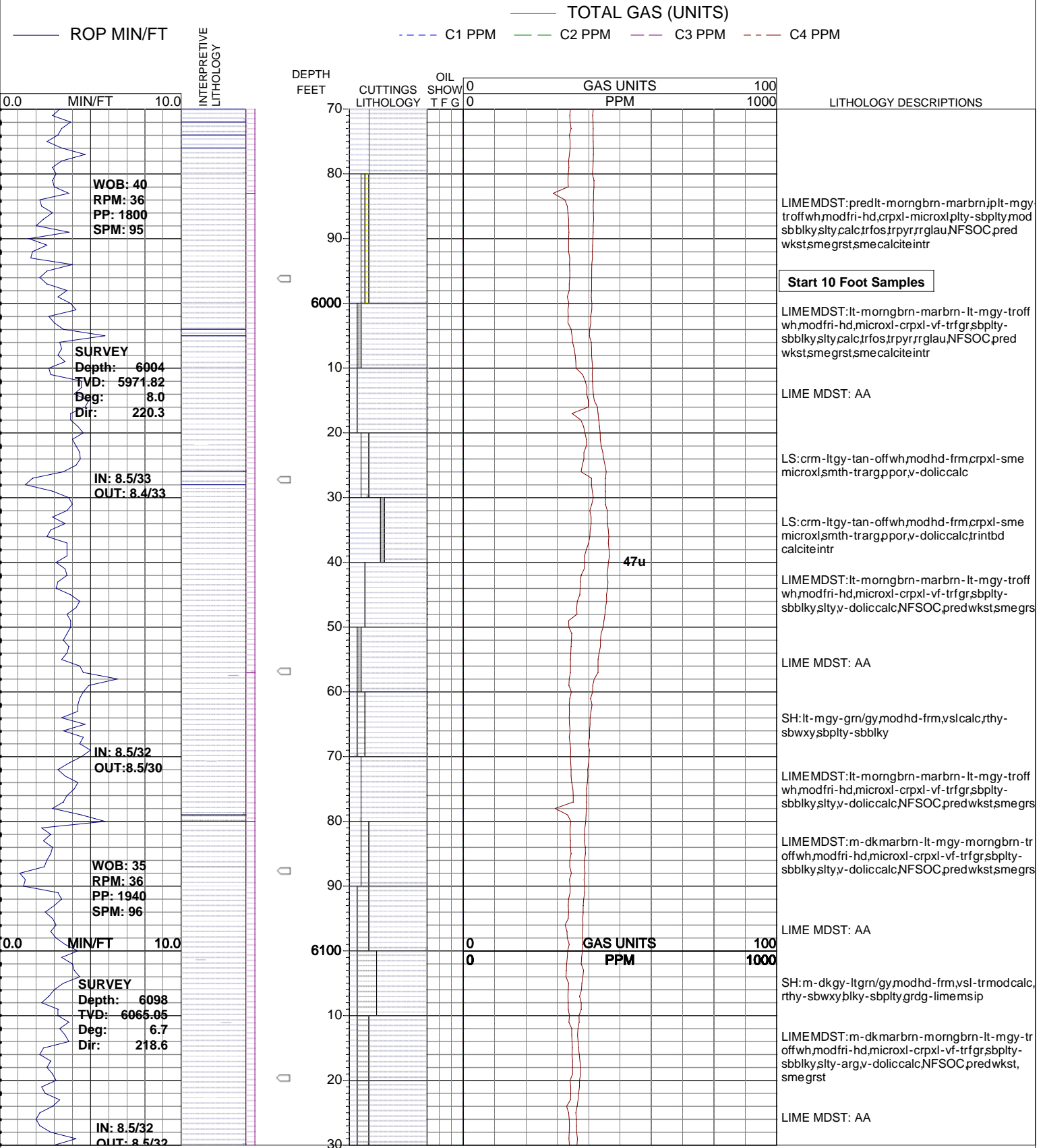


# PASON SYSTEMS USA CORP.

(720) 880-2000

OPERATOR: CPC MINERALS, LLC  
 WELL: CPC 17-1  
 PRINT DATE: Mon Feb 18 2008 08:57:00

LOCATION: SEC. 17, T3S, R43E  
 COUNTY: BONNEVILLE  
 STATE: IDAHO



WOB: 40  
 RPM: 36  
 PP: 1800  
 SPM: 95

**SURVEY**  
 Depth: 6004  
 TVD: 5971.82  
 Deg: 8.0  
 Dir: 220.3

IN: 8.5/33  
 OUT: 8.4/33

IN: 8.5/32  
 OUT: 8.5/30

WOB: 35  
 RPM: 36  
 PP: 1940  
 SPM: 96

**SURVEY**  
 Depth: 6098  
 TVD: 6065.05  
 Deg: 6.7  
 Dir: 218.6

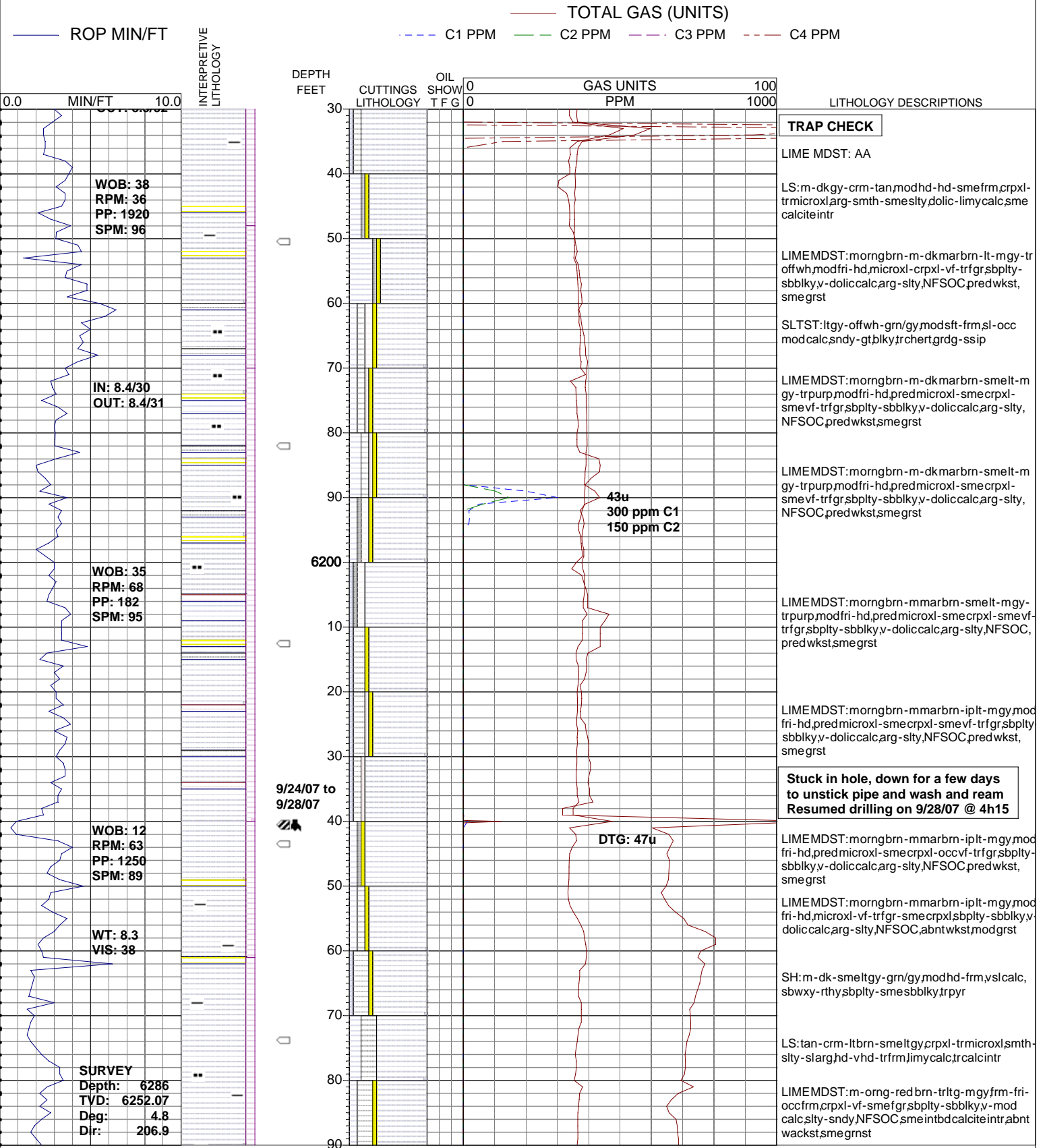
IN: 8.5/32  
 OUT: 8.5/32

# PASON SYSTEMS USA CORP.

(720) 880-2000

OPERATOR: CPC MINERALS, LLC  
 WELL: CPC 17-1  
 PRINT DATE: Mon Feb 18 2008 08:57:00

LOCATION: SEC. 17, T3S, R43E  
 COUNTY: BONNEVILLE  
 STATE: IDAHO



WOB: 38  
 RPM: 36  
 PP: 1920  
 SPM: 96

IN: 8.4/30  
 OUT: 8.4/31

WOB: 35  
 RPM: 68  
 PP: 182  
 SPM: 95

WOB: 12  
 RPM: 63  
 PP: 1250  
 SPM: 89

WT: 8.3  
 VIS: 38

**SURVEY**  
 Depth: 6286  
 TVD: 6252.07  
 Deg: 4.8  
 Dir: 206.9

9/24/07 to 9/28/07



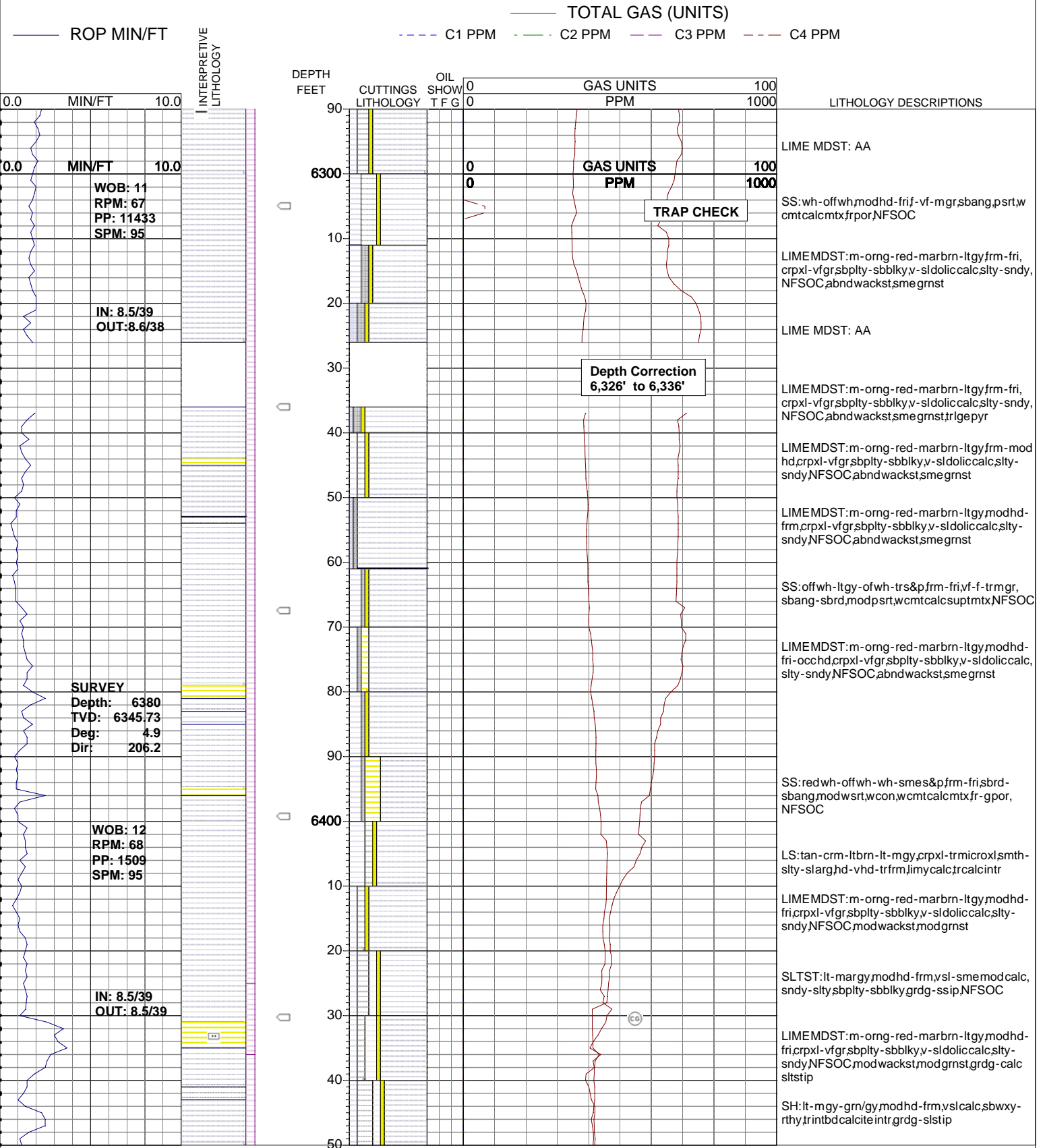
**Stuck in hole, down for a few days to unstick pipe and wash and ream Resumed drilling on 9/28/07 @ 4h15**

# PASON SYSTEMS USA CORP.

(720) 880-2000

OPERATOR: CPC MINERALS, LLC  
 WELL: CPC 17-1  
 PRINT DATE: Mon Feb 18 2008 08:57:00

LOCATION: SEC. 17, T3S, R43E  
 COUNTY: BONNEVILLE  
 STATE: IDAHO

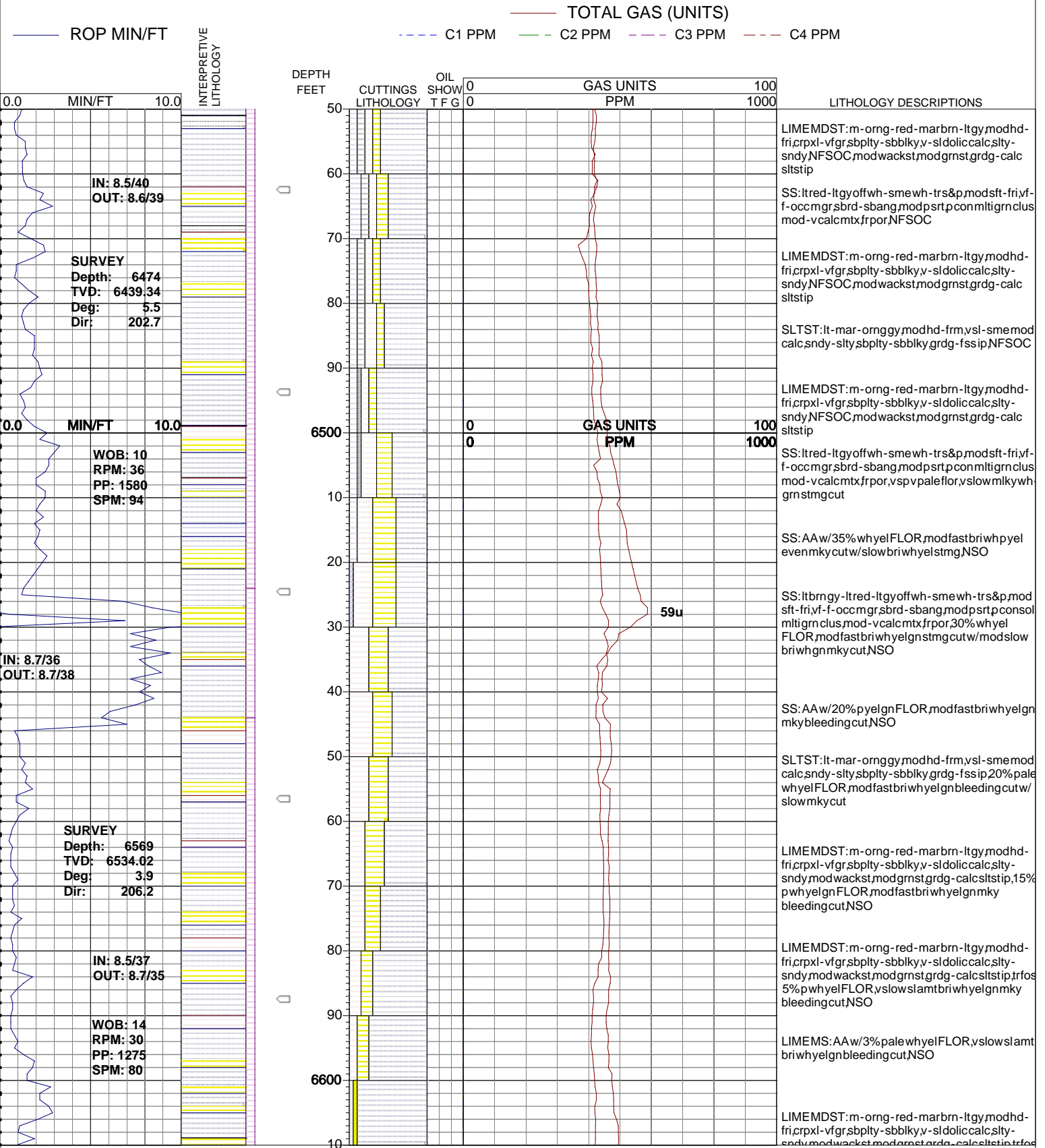


# PASON SYSTEMS USA CORP.

(720) 880-2000

OPERATOR: CPC MINERALS, LLC  
 WELL: CPC 17-1  
 PRINT DATE: Mon Feb 18 2008 08:57:10

LOCATION: SEC. 17, T3S, R43E  
 COUNTY: BONNEVILLE  
 STATE: IDAHO



ROP MIN/FT

TOTAL GAS (UNITS)

C1 PPM C2 PPM C3 PPM C4 PPM

0.0 MIN/FT 10.0

DEPTH FEET 50 60 70 80 90 6500 10 20 30 40 50 60 70 80 90 6600 10

LITHOLOGY DESCRIPTIONS

0.0 MIN/FT 10.0

GAS UNITS PPM 0 1000

LITHOLOGY DESCRIPTIONS

IN: 8.7/36  
OUT: 8.7/38

SURVEY  
 Depth: 6569  
 TVD: 6534.02  
 Deg: 3.9  
 Dir: 206.2

IN: 8.5/37  
OUT: 8.7/35

WOB: 14  
 RPM: 30  
 PP: 1275  
 SPM: 80

59u

LIMEMDST:m-orng-red-marbrn-ltgy,modhd-fri,crpxl-vfgr,spbply-sbbkly,v-sldoliccalc,sity-sndy,NFSOC,modwackst,modgrnst,grdg-calc sltstip

SS:ltred-ltgyoffwh-smewh-trs&p,modsf-fri,yf-f-occmgr,sbrd-sbang,modpsrt,pconmltigrnclus mod-vcalcmtx,frpor,NFSOC

LIMEMDST:m-orng-red-marbrn-ltgy,modhd-fri,crpxl-vfgr,spbply-sbbkly,v-sldoliccalc,sity-sndy,NFSOC,modwackst,modgrnst,grdg-calc sltstip

SLTST:lt-mar-ornggy,modhd-frm,vsl-smemod calc,sndy-sity,spbply-sbbkly,grdg-fssip,NFSOC

LIMEMDST:m-orng-red-marbrn-ltgy,modhd-fri,crpxl-vfgr,spbply-sbbkly,v-sldoliccalc,sity-sndy,NFSOC,modwackst,modgrnst,grdg-calc sltstip

SS:ltred-ltgyoffwh-smewh-trs&p,modsf-fri,yf-f-occmgr,sbrd-sbang,modpsrt,pconmltigrnclus mod-vcalcmtx,frpor,vspvpaleflor,vslowmkywh grnstmgcut

SS:AAw/35%whyelFLOR,modfastbriwhpyel evenmkycutw/slowbriwhyelstmg,NSO

SS:ltbrngy-ltred-ltgyoffwh-smewh-trs&p,mod sft-fri,yf-f-occmgr,sbrd-sbang,modpsrt,pconsol mltigrnclus,mod-vcalcmtx,frpor,30%whyel FLOR,modfastbriwhyelgnstmgcutw/modslow briwhgnmkycut,NSO

SS:AAw/20%pyelgnFLOR,modfastbriwhyelgn mkybleedingcut,NSO

SLTST:lt-mar-ornggy,modhd-frm,vsl-smemod calc,sndy-sity,spbply-sbbkly,grdg-fssip,20%pale whyelFLOR,modfastbriwhyelgnbleedingcutw/ slowmkycut

LIMEMDST:m-orng-red-marbrn-ltgy,modhd-fri,crpxl-vfgr,spbply-sbbkly,v-sldoliccalc,sity-sndy,modwackst,modgrnst,grdg-calc,sltstip,15% pwhyelgnFLOR,modfastbriwhyelgnmky bleedingcut,NSO

LIMEMDST:m-orng-red-marbrn-ltgy,modhd-fri,crpxl-vfgr,spbply-sbbkly,v-sldoliccalc,sity-sndy,modwackst,modgrnst,grdg-calc,sltstip,rfos 5%pwhyelFLOR,vslowsiamtbriwhyelgnmky bleedingcut,NSO

LIMEMS:AAw/3%palewhyelFLOR,vslowsiamt briwhyelgnbleedingcut,NSO

LIMEMDST:m-orng-red-marbrn-ltgy,modhd-fri,crpxl-vfgr,spbply-sbbkly,v-sldoliccalc,sity-sndy,modwackst,modgrnst,grdg-calc,sltstip,rfos

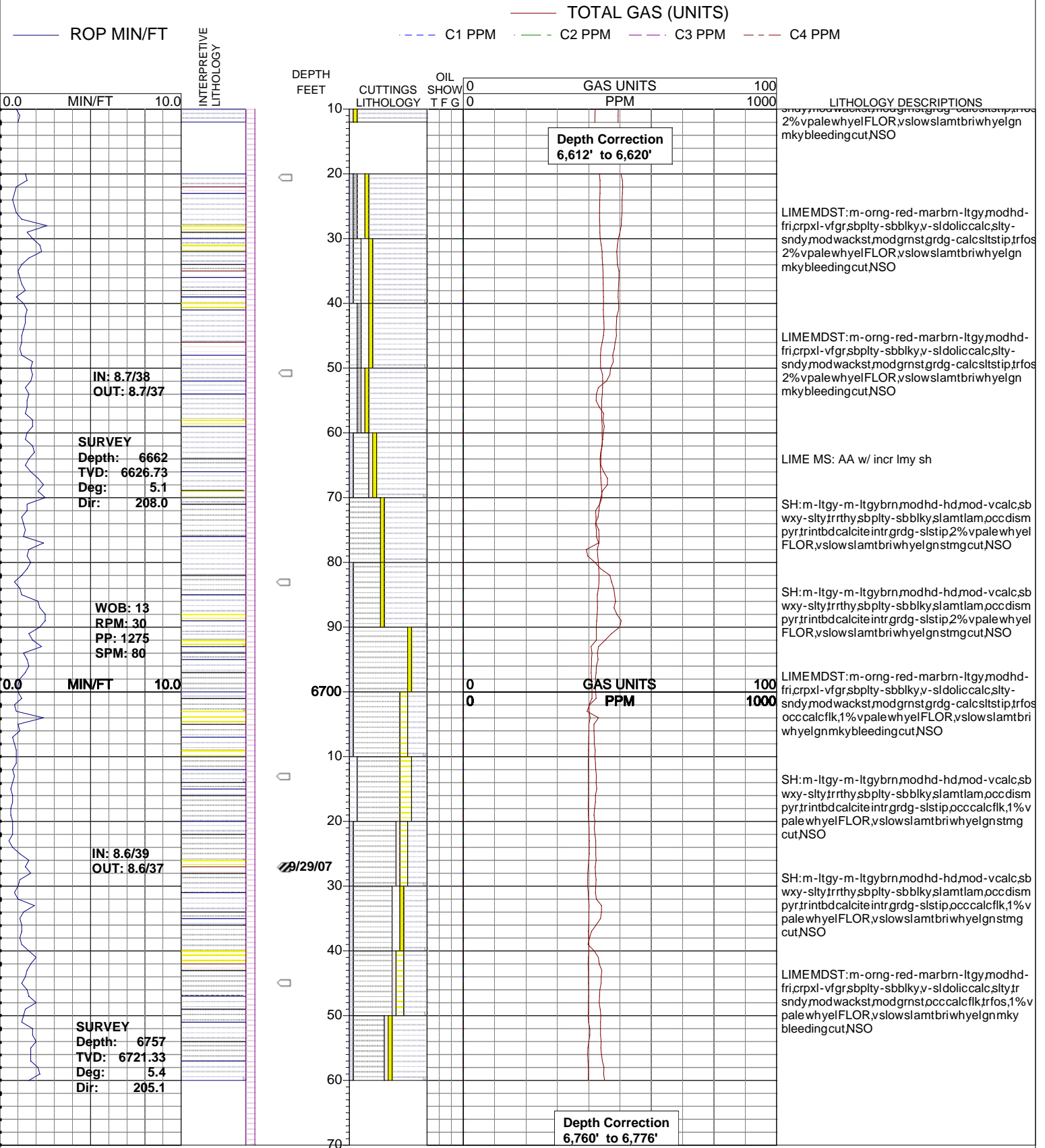


# PASON SYSTEMS USA CORP.

(720) 880-2000

OPERATOR: CPC MINERALS, LLC  
 WELL: CPC 17-1  
 PRINT DATE: Mon Feb 18 2008 08:57:10

LOCATION: SEC. 17, T3S, R43E  
 COUNTY: BONNEVILLE  
 STATE: IDAHO

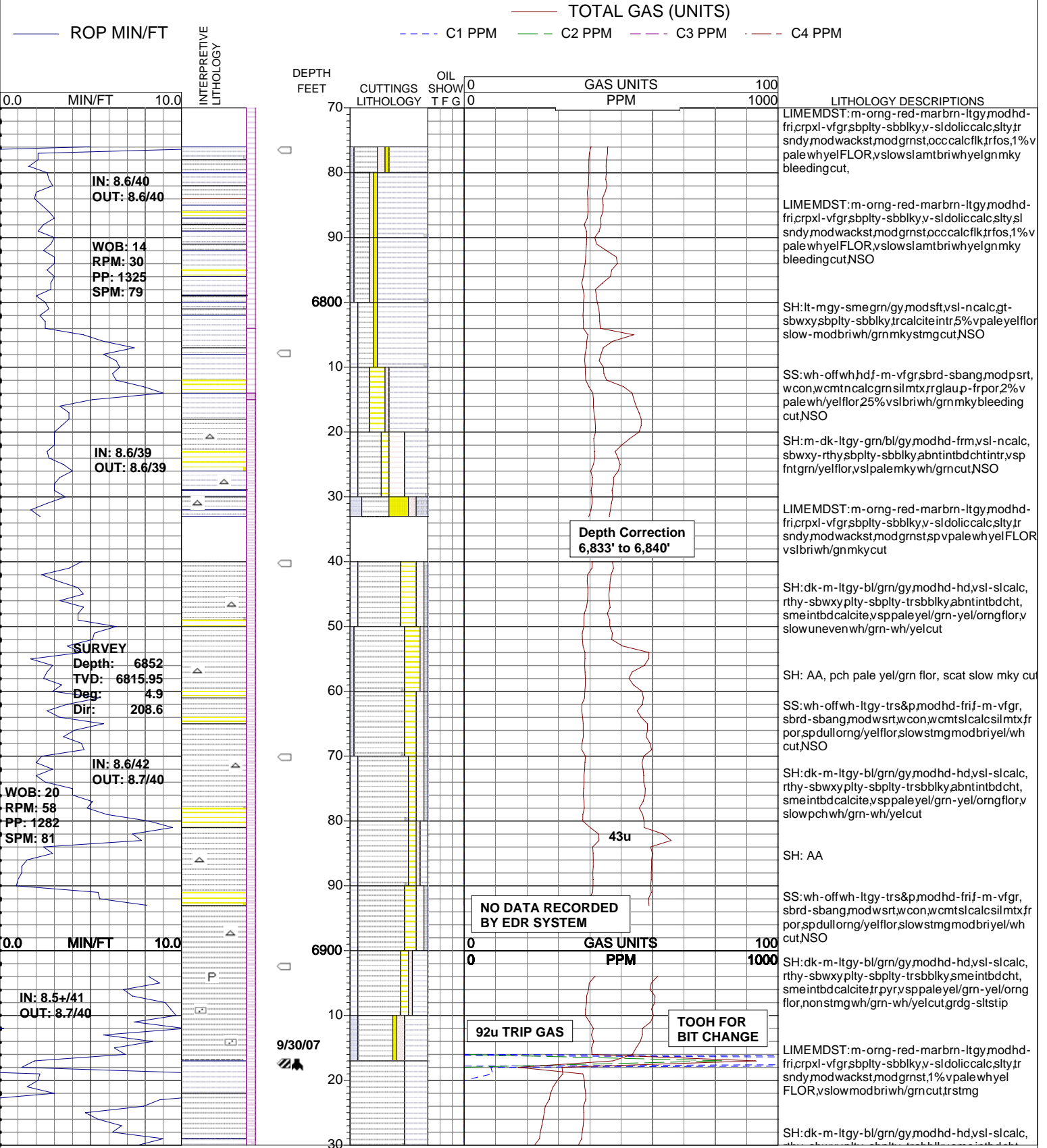


# PASON SYSTEMS USA CORP.

(720) 880-2000

OPERATOR: CPC MINERALS, LLC  
 WELL: CPC 17-1  
 PRINT DATE: Mon Feb 18 2008 08:57:10

LOCATION: SEC. 17, T3S, R43E  
 COUNTY: BONNEVILLE  
 STATE: IDAHO

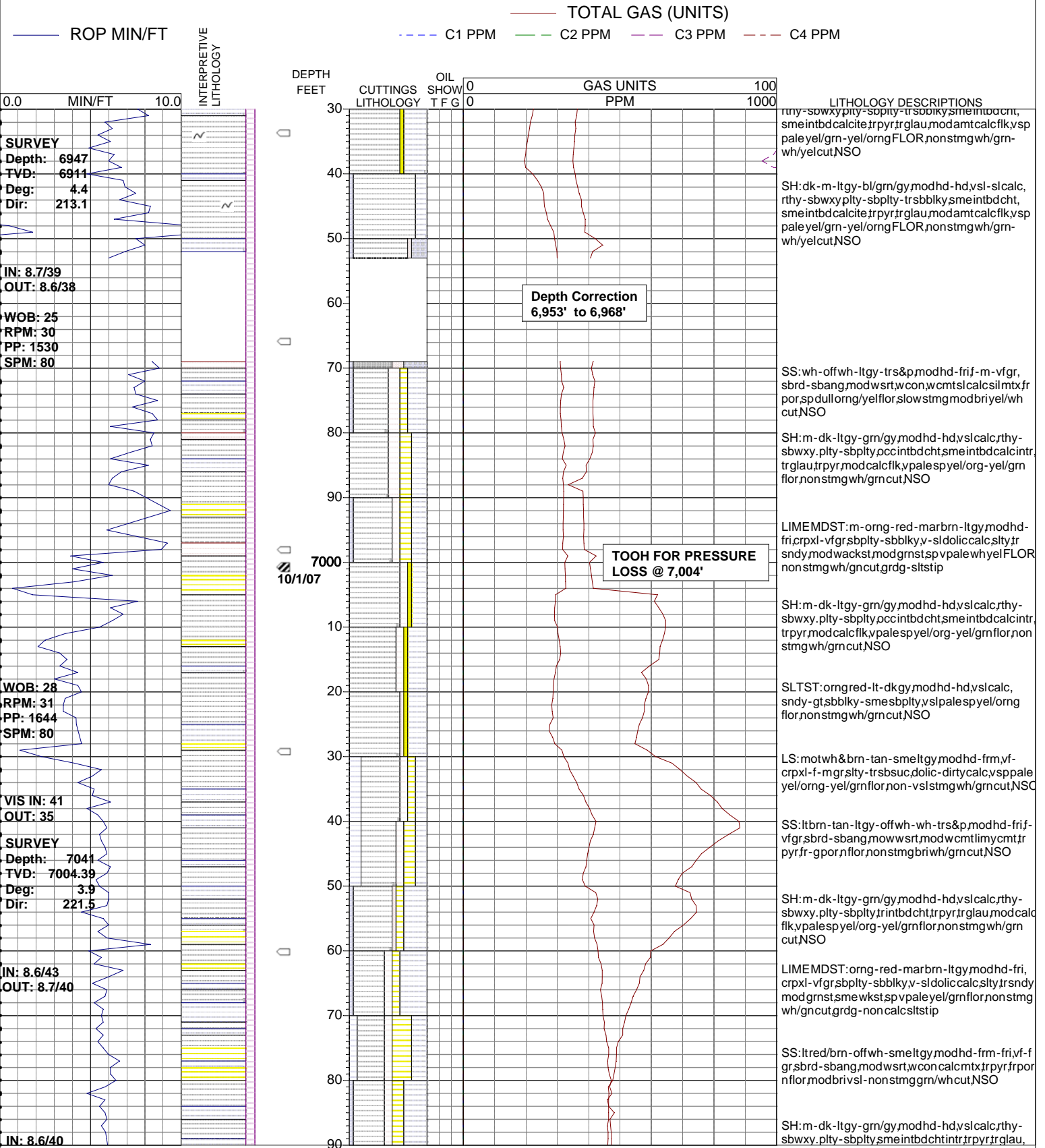


# PASON SYSTEMS USA CORP.

(720) 880-2000

OPERATOR: CPC MINERALS, LLC  
 WELL: CPC 17-1  
 PRINT DATE: Mon Feb 18 2008 08:57:10

LOCATION: SEC. 17, T3S, R43E  
 COUNTY: BONNEVILLE  
 STATE: IDAHO



**SURVEY**  
 Depth: 6947  
 TVD: 6911  
 Deg: 4.4  
 Dir: 213.1

**IN: 8.7/39**  
**OUT: 8.6/38**

**WOB: 25**  
**RPM: 30**  
**PP: 1530**  
**SPM: 80**

**WOB: 28**  
**RPM: 31**  
**PP: 1644**  
**SPM: 80**

**VIS IN: 41**  
**OUT: 35**

**SURVEY**  
 Depth: 7041  
 TVD: 7004.39  
 Deg: 3.9  
 Dir: 221.5

**IN: 8.6/43**  
**OUT: 8.7/40**

**IN: 8.6/40**

DEPTH FEET	CUTTINGS LITHOLOGY	OIL SHOW TFG	GAS UNITS PPM
30			
40			
50			
60			
70			
7000			
10/1/07			
10			
20			
30			
40			
50			
60			
70			
80			
90			

**LITHOLOGY DESCRIPTIONS**

rhy-sbwxypty-sbply-trsbbkysmeintbdcht, smeintbdcalcite, trpyr, trglau, modamtcalcflk, vsp paleyel/grn-yel/orng FLOR, nonstmngwh/grn-wh/yelcut, NSO

SH:dk-m-ltgy-bl/grn/gy,modhd-hd,vsl-calc, rthy-sbwxypty-sbply-trsbbkysmeintbdcht, smeintbdcalcite, trpyr, trglau, modamtcalcflk, vsp paleyel/grn-yel/orng FLOR, nonstmngwh/grn-wh/yelcut, NSO

SS:wh-offwh-ltgy-trs&p,modhd-fri,f-m-vfgr, sbrd-sbang,modwsrt,wcon,wcmstlcalcslm,tx,fr por,spdull,org/yelflor,slowstmng,modbriyel/wh cut,NSO

SH:m-dk-ltgy-grn/gy,modhd-hd,vslcalc,rthy-sbwxy,pty-sbply,occintbdcht,smeintbdcalcintr, trglau, trpyr, modcalcflk, vpalespyel/org-yel/grn flor, nonstmngwh/grncut, NSO

LIME MDST: m-org-red-marbrn-ltgy,modhd-fri, crpxl-vfgr, sbply-sbbkly, v-sldoliccalc, slty, trsndy, modwackst, modgrnst, spv palewh/yelflor, nonstmngwh/gncut, grdg-sltstip

SH:m-dk-ltgy-grn/gy,modhd-hd,vslcalc,rthy-sbwxy,pty-sbply,occintbdcht,smeintbdcalcintr, trpyr, modcalcflk, vpalespyel/org-yel/grn flor, non stmngwh/grncut, NSO

SLTST: orgred-lt-dkgy,modhd-hd,vslcalc, sndy-gt, sbkly-smesbply, vslpalespyel/org flor, nonstmngwh/grncut, NSO

LS: motwh&brn-tan-smeltgy,modhd-frm,vf-crpxl-f-mgr, slty-trsbsuc, dolic-dirtycalc, vsp paleyel/orng-yel/grn flor, non-vslstmngwh/grncut, NSO

SS:ltbrn-tan-ltgy-offwh-wh-trs&p,modhd-fri,f-vfgr, sbrd-sbang, modwsrt, modwcmstl, mcm, trpyr, fr-gpor, nflor, nonstmngbriwh/grncut, NSO

SH:m-dk-ltgy-grn/gy,modhd-hd,vslcalc,rthy-sbwxy,pty-sbply, trintbdcht, trpyr, trglau, modcalc flk, vpalespyel/org-yel/grn flor, nonstmngwh/grn cut, NSO

LIME MDST: org-red-marbrn-ltgy,modhd-fri, crpxl-vfgr, sbply-sbbkly, v-sldoliccalc, slty, trsndy, modgrnst, smewkst, spv paleyel/grn flor, nonstmng wh/gncut, grdg-noncalcsltstip

SS:ltred/brn-offwh-smeltgy,modhd-frm-fri,vf-fgr, sbrd-sbang, modwsrt, wcon, calcmtx, trpyr, frpor nflor, modbri, vsl-nonstmnggrn/wh cut, NSO

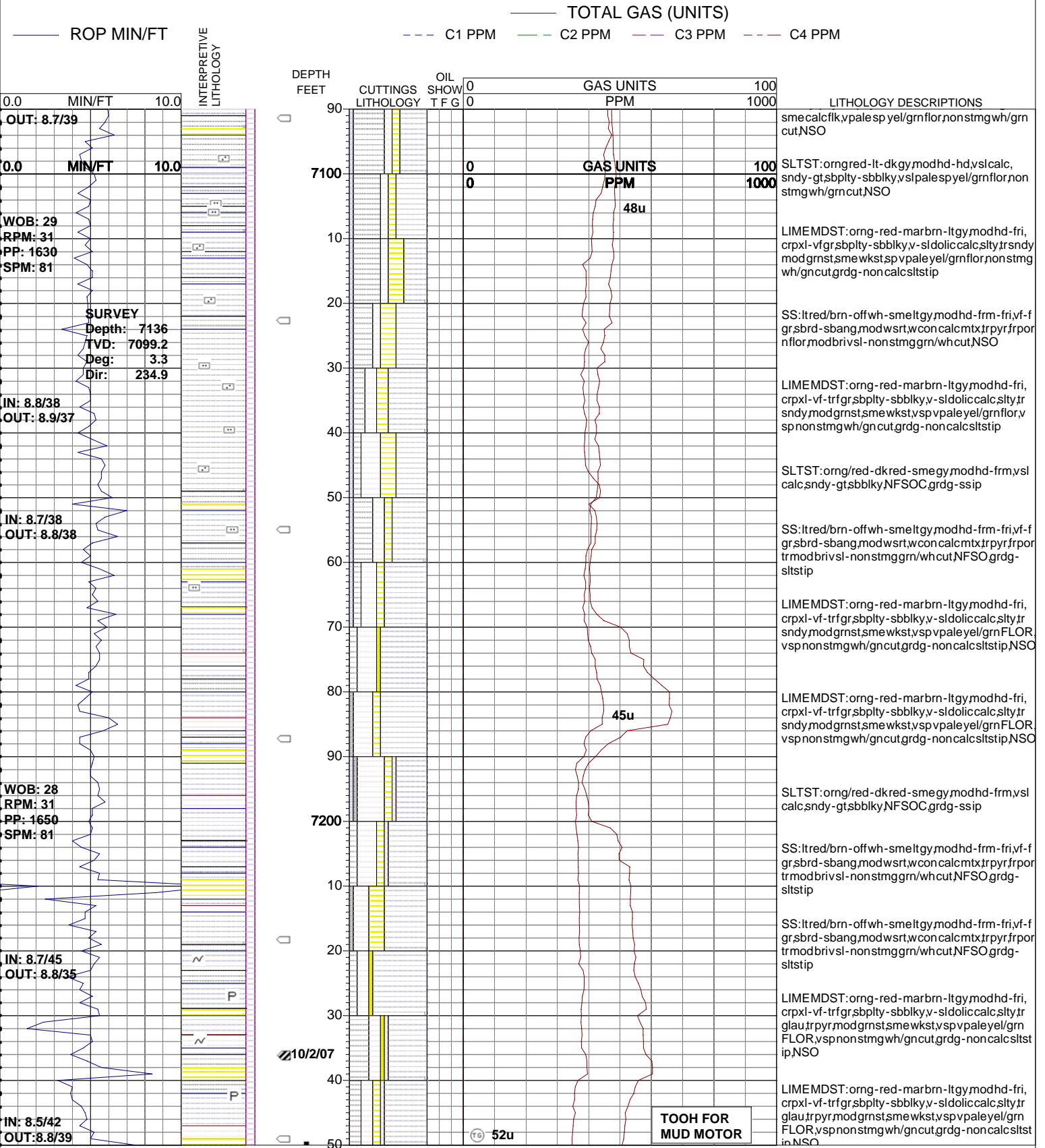
SH:m-dk-ltgy-grn/gy,modhd-hd,vslcalc,rthy-sbwxy,pty-sbply,smeintbdchtintr, trpyr, trglau,

# PASON SYSTEMS USA CORP.

(720) 880-2000

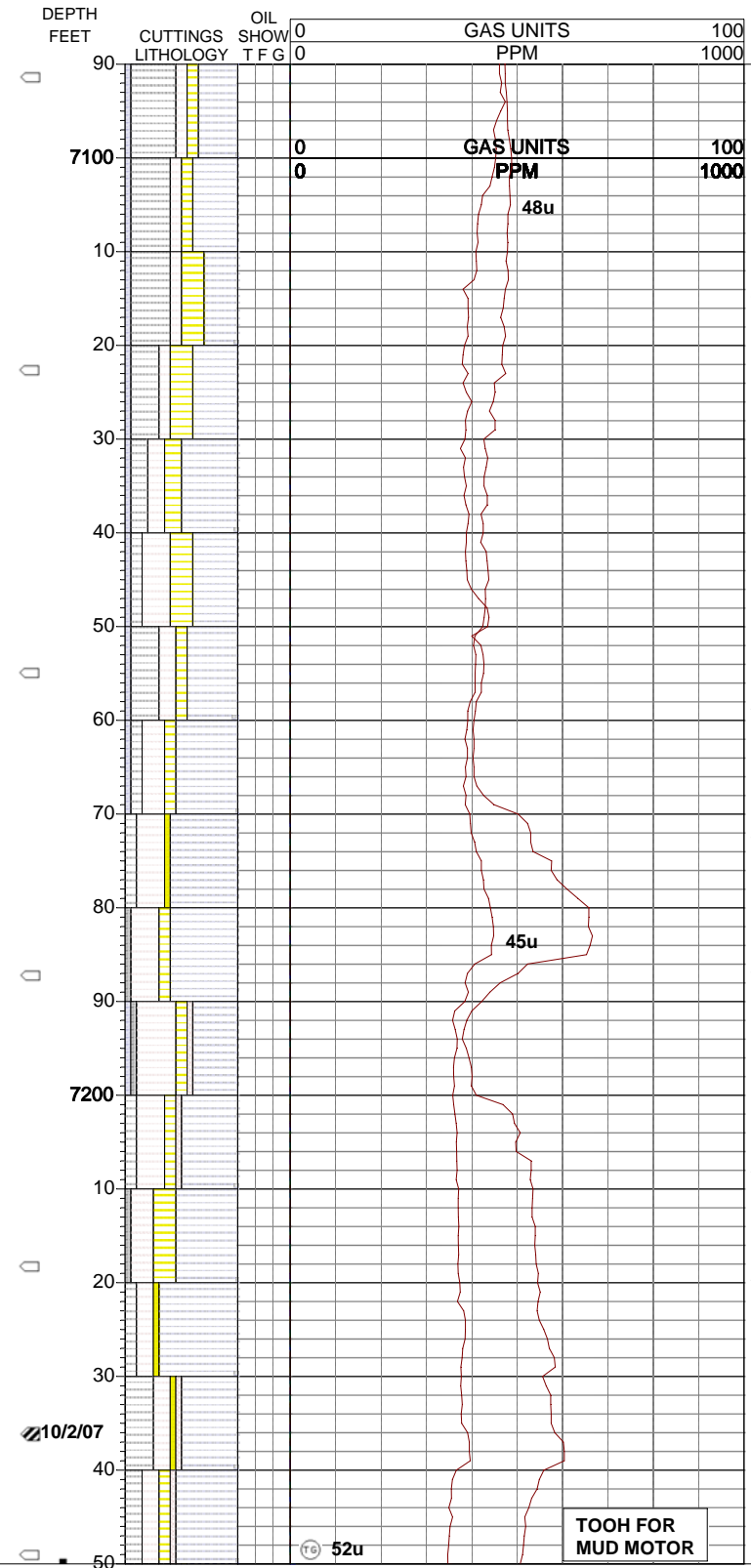
OPERATOR: CPC MINERALS, LLC  
 WELL: CPC 17-1  
 PRINT DATE: Mon Feb 18 2008 08:57:20

LOCATION: SEC. 17, T3S, R43E  
 COUNTY: BONNEVILLE  
 STATE: IDAHO



OUT: 8.7/39  
 WOB: 29  
 RPM: 31  
 PP: 1630  
 SPM: 81  
 SURVEY  
 Depth: 7136  
 TVD: 7099.2  
 Deg: 3.3  
 Dir: 234.9  
 IN: 8.8/38  
 OUT: 8.9/37  
 IN: 8.7/38  
 OUT: 8.8/38  
 WOB: 28  
 RPM: 31  
 PP: 1650  
 SPM: 81  
 IN: 8.7/45  
 OUT: 8.8/35  
 IN: 8.5/42  
 OUT: 8.8/39

INTERPRETIVE LITHOLOGY



LITHOLOGY DESCRIPTIONS

sme.calcflk.v.palespyel/grnflor.nonstmgwh/grn cut.NSO

SLTST:orgred-lt-dkgy.modhd-hd.vslcalc, sndy-gt.sbpity-sbbiky.vslpalespyel/grnflor.non stmgwh/grn cut.NSO

LIMEMDST:org-red-marbrn-ltgy.modhd-fri, crpxl-vf-gr.sbpity-sbbiky.v-sldoliccalc.slytr.sndy.modgrnst.sme.wkst.vsp.vpaleyel/grnflor.nonstmg wh/gncut.grdg-noncalcsiltstip

SS:ltred/brn-offwh-smeltgy.modhd-fri.vf-f gr.sbrd-sbang.modwrt.wcon.calcmtx.trpyr.frpor nflor.modbrivsl-nonstmggrn/whcut.NSO

LIMEMDST:org-red-marbrn-ltgy.modhd-fri, crpxl-vf-trfgr.sbpity-sbbiky.v-sldoliccalc.slytr sndy.modgrnst.sme.wkst.vsp.vpaleyel/grnflor.v sp.nonstmgwh/gncut.grdg-noncalcsiltstip

SLTST:org/red-dkred-smegy.modhd-fri.vsl calc.sndy-gt.sbbiky.NFSOC.grdg-ssip

SS:ltred/brn-offwh-smeltgy.modhd-fri.vf-f gr.sbrd-sbang.modwrt.wcon.calcmtx.trpyr.frpor trmodbrivsl-nonstmggrn/whcut.NFSO grdg-siltstip

LIMEMDST:org-red-marbrn-ltgy.modhd-fri, crpxl-vf-trfgr.sbpity-sbbiky.v-sldoliccalc.slytr sndy.modgrnst.sme.wkst.vsp.vpaleyel/grnFLOR.vspnonstmgwh/gncut.grdg-noncalcsiltstip.NSO

LIMEMDST:org-red-marbrn-ltgy.modhd-fri, crpxl-vf-trfgr.sbpity-sbbiky.v-sldoliccalc.slytr sndy.modgrnst.sme.wkst.vsp.vpaleyel/grnFLOR.vspnonstmgwh/gncut.grdg-noncalcsiltstip.NSO

TOOH FOR MUD MOTOR

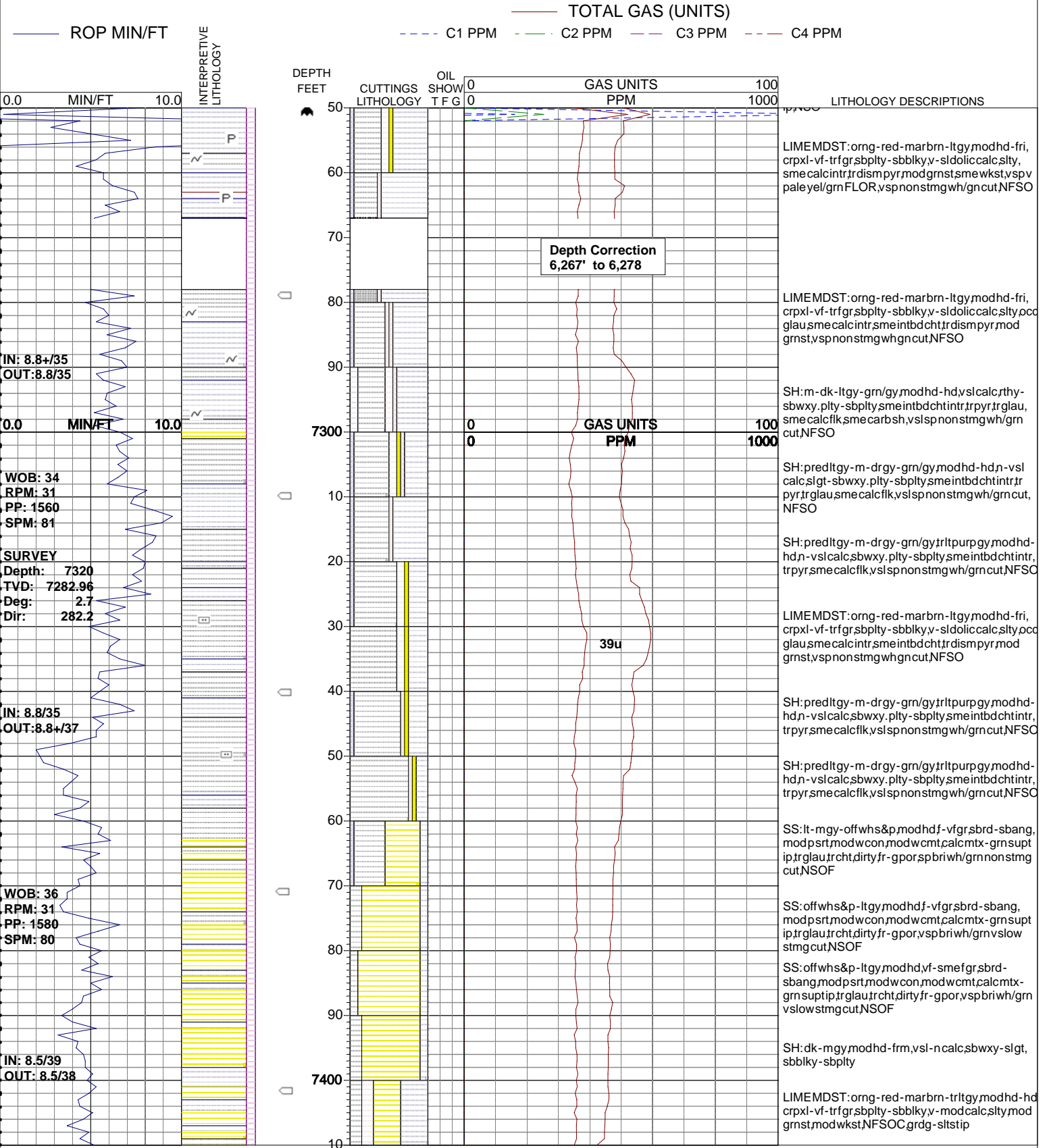


# PASON SYSTEMS USA CORP.

(720) 880-2000

OPERATOR: CPC MINERALS, LLC  
 WELL: CPC 17-1  
 PRINT DATE: Mon Feb 18 2008 08:57:20

LOCATION: SEC. 17, T3S, R43E  
 COUNTY: BONNEVILLE  
 STATE: IDAHO

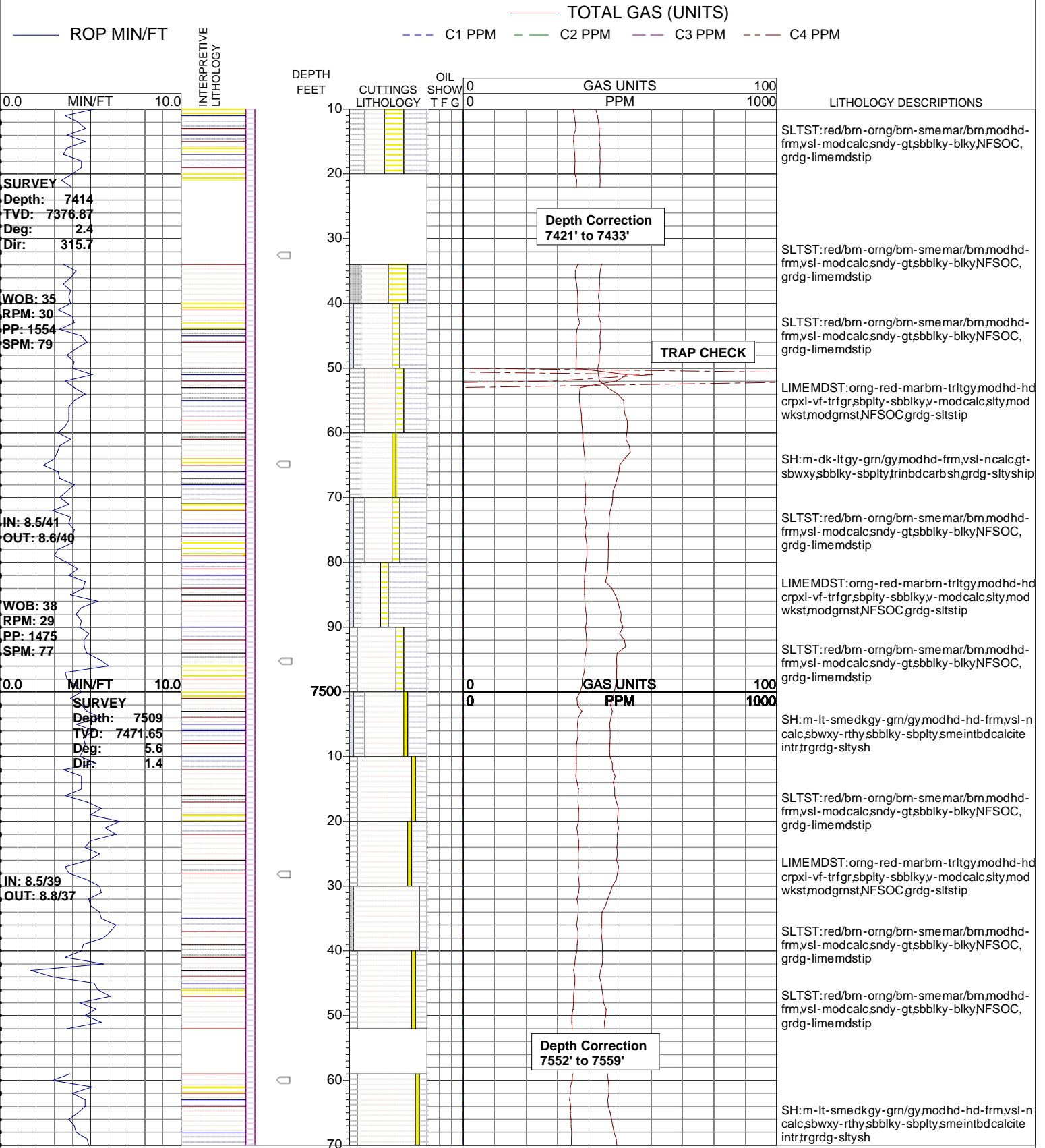


# PASON SYSTEMS USA CORP.

(720) 880-2000

OPERATOR: CPC MINERALS, LLC  
 WELL: CPC 17-1  
 PRINT DATE: Mon Feb 18 2008 08:57:20

LOCATION: SEC. 17, T3S, R43E  
 COUNTY: BONNEVILLE  
 STATE: IDAHO



# PASON SYSTEMS USA CORP.

(720) 880-2000

OPERATOR: CPC MINERALS, LLC  
 WELL: CPC 17-1  
 PRINT DATE: Mon Feb 18 2008 08:57:20

LOCATION: SEC. 17, T3S, R43E  
 COUNTY: BONNEVILLE  
 STATE: IDAHO

