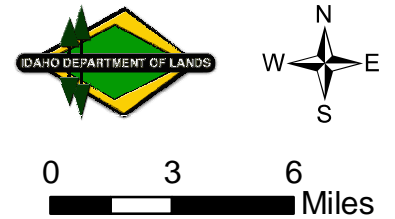


Seismic Exploration Southwest Idaho

August 8, 2012 - February 5, 2016

Legend

- Highway
- 2D Seismic Exploration Location**
- October 2012
- March 2013
- 3D Seismic Exploration Location**
- August 2012
- January 2014
- October 2014
- Surface Ownership**
- Bureau of Land Management
- Bureau of Reclamation
- Idaho Department of Lands
- Idaho Fish and Game
- Forest Service



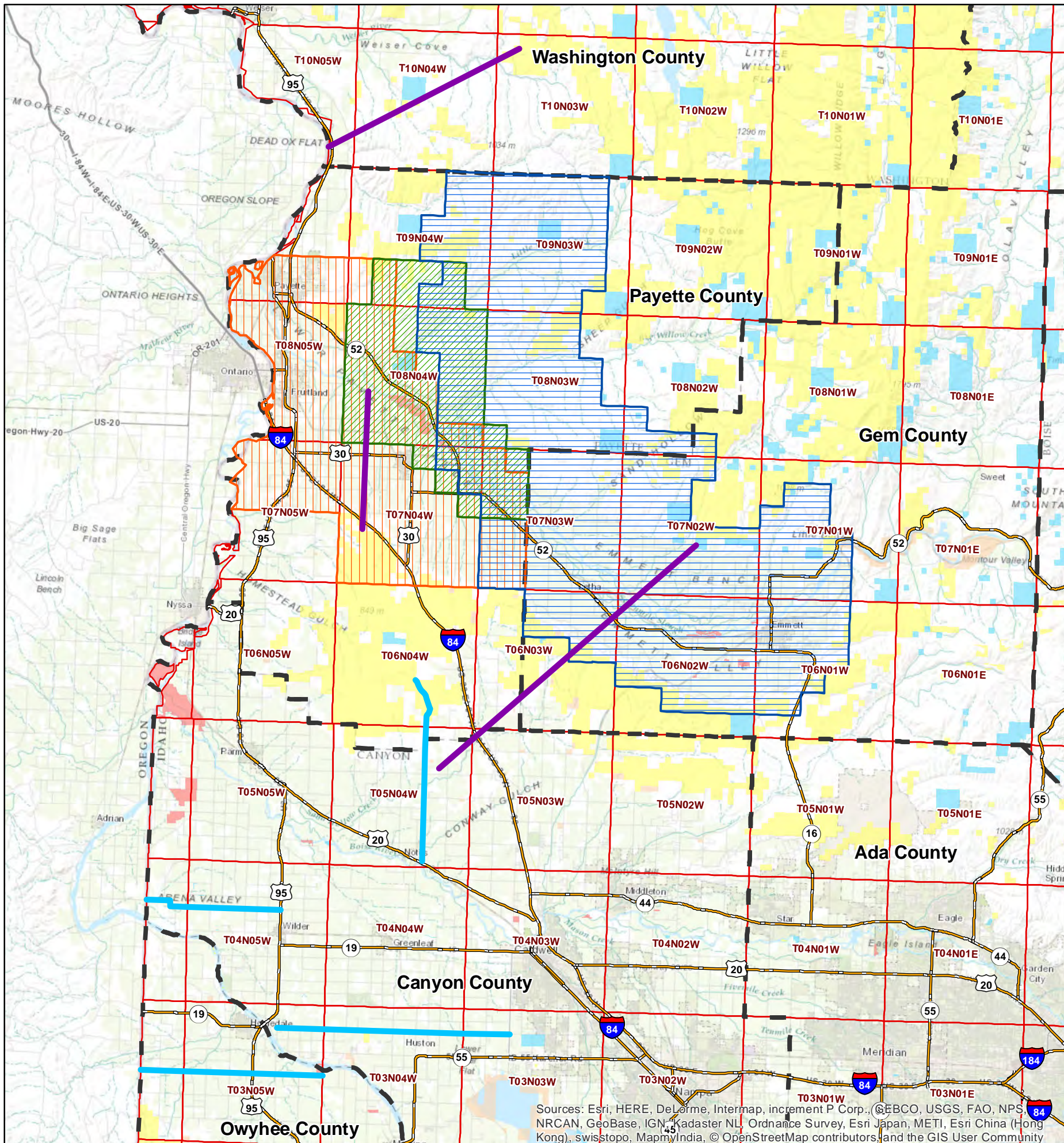
Explanation

Projection: Idaho Transverse Mercator
IDTM83

Map Notes and Data Sources
Seismic Exploration data from August 2012 through current date

Disclaimer:
This map has been compiled using the best information available to the Idaho Department of Lands at the time and may be updated and/or revised without notice. In situations where known accuracy and completeness is required, the user has the responsibility to verify the accuracy of the map and the underlying data sources.

Vicinity Map



Sources: Esri, HERE, DeLorme, Intermap, increment P Corp., GEBCO, USGS, FAO, NPS, NRCAN, GeoBase, IGN, Kadaster NL, Ordnance Survey, Esri Japan, METI, Esri China (Hong Kong), swisstopo, MapmyIndia, © OpenStreetMap contributors, and the GIS User Community