



RADIAL BOND LOG WITH GAMMA RAY

RECEIVED
By James Thum at 1:32 pm, Dec 29, 2021

Company SNAKE RIVER OIL & GAS
Well BARLOW #2-14
Field WILDCAT
County PAYETTE State **IDAHO**
Location: API #: 11-075-20036
 2453' FWL & 1612' FSL
 SEC 14 TWP 08N RGE 05W
Permanent Datum G.L. Elevation 2164'
Log Measured From K.B. 12' Above Perm. Datum
Drilling Measured From K.B. G.L. 2176'
 Elevation 2164'

Date of Service	21-OCTOBER-21	Other Services	
Run Number	ONE		
Depth Driller or P8TD	4505'		
Depth Logger	4441'		
Bottom Log Interval	4441'		
Top Log Interval	SURFACE		
Open Hole Size	N/A		
Type Fluid	WELL		
Fluid Level	SURFACE		
Fluid Density	N/A		
Max. Recorded Temperature	190 DEG F		
Max. Wellhead Pressure	ZERO		
Wellhead Connection	7 1/16" 5K		
Estimated Cement Top			
Unit Number	P-135		
Wireline Size	9/32"		
Location	CASPER, WY.		
Recorded By	MOREY GUMMER		
Witnessed By	TOM DOLENCE		
	Size	WV/Ft	Top
Tubing Record			Bottom
Surface Casing	9 5/8"	36#	SURFACE
Production Casing	5 1/2"	15.5#	SURFACE
Liner Record			

<<< Fold Here >>>

All interpretations are opinions based on inferences from electrical or other measurements and Pioneer Wireline Services, LLC cannot and does not guarantee the accuracy or correctness of any interpretation, and Pioneer Wireline Services, LLC will not be liable or responsible for any loss, costs, damages, or expenses incurred or sustained by anyone resulting from any interpretation made by any of our officers, agents or employees.

Comments

N/A DENOTES NOT AVAILABLE OR NON-APPLICABLE.

LOG CORRELATED TO WEATHERFORD COMPACT QUAD COMBO DATED: 12-OCT-2021

THANK YOU FOR USING PIONEER ENERGY SERVICES!

Your Pioneer Energy Services Crew	Tool Data - Services	Serial Number
Engineer: M. GUMMER/J. RIGGIN	2 3/4" PROBE SCBL	
Operator: M. RIVERA	2 3/4" PROBE CCL	
Operator:	2 3/4" PROBE GR	
Operator:		

Log Variables

DatabaseC:\ProgramData\Warrior\Data\snake_river_barlow_2-14_1107520036_20212110.db
 Dataset wildcat/barlow_2-14/scbl/pass8/_vars_

Top - Bottom


BHTEMP_Src TEMP	BOREID in 7.875	BOTTEMP degF 100	CASEOD in 5.5	CASETHCK in 0.275	CASEWGHT lb/ft 15.5	MAXAMPL mV 71.9
MINAMPL mV 0.7	MINATTN db/ft 0.8	PERFS No	PPT usec 264	SRFTEMP degF 0	TDEPTH ft 0	

Variable Description

BHTEMP_Src : BHTEMP Input Source Selector
 BOREID : Borehole I.D.
 BOTTEMP : Bottom Hole Temperature
 CASEOD : Casing O.D.
 CASETHCK : Casing Thickness
 CASEWGHT : Casing Weight
 MAXAMPL : Maximum Amplitude

MINAMPL : Minimum Amplitude
 MINATTN : Minimum Attenuation
 PERFS : Perforation Flag
 PPT : Predicted Pipe Time
 SRFTEMP : Surface Temperature
 TDEPTH : Total Depth


Sensor	Offset (ft)	Schematic	Description	Length (ft)	O.D. (in)	Weight (lb)	
			Cable Head-Titan_144 1 7/16" Titan Cable Head	1.03	1.44	2.00	
TEMP	11.94						
WVFS8	9.65			PROBE-RBT-DIGITAL-RBL-DCT (FW1210-41) Probe 2 3/4" Radii Bond with Temp-Corrosion Package	9.21	2.75	105.00
WVFS7	9.65						
WVFS6	9.65						
WVFS5	9.65						
WVFS4	9.65						
WVFS3	9.65						
WVFS2	9.65						
WVFS1	9.65						
WVFCAL	9.65						
WVF3FT	9.65						
WVF5FT	8.65						
HEADVOLT	5.46						

CCL	4.31		CCL_Logging-275 TekCo_2 (IFRK1-02) 2 3/4"	1.83	2.75	15.00
GR	1.16		PROBE-GR-ANALOG-GR-A (070153) Probe 2 3/4" Logging Gamma Ray	3.35	2.75	50.00
			Bull_Plug-1_3/8_GO Titan 1 3/8" Female Bull Plug	0.27	1.38	1.00
Dataset: snake_river_barlow_2-14_1107520036_20212110.db: wildcat/barlow_2-14/scbl/pass8 Total length: 15.70 ft Total weight: 173.00 lb O.D.: 2.75 in						

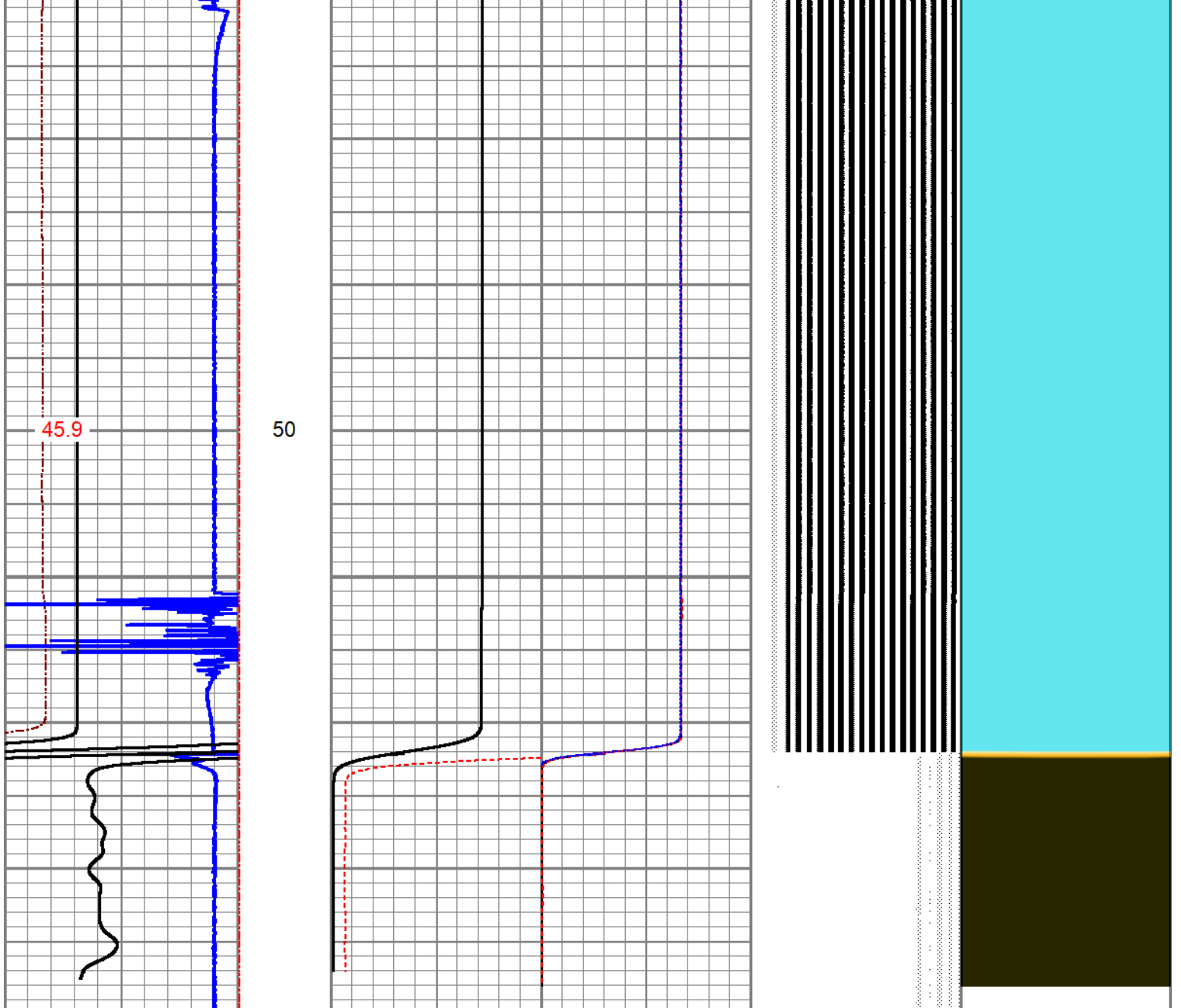


Internal Cal Check

Database File: snake_river_barlow_2-14_1107520036_20212110.db
 Dataset Pathname: wildcat/barlow_2-14/ccl_jb_gr/pass4
 Presentation Format: pinr_scbl
 Dataset Creation: Wed Oct 13 00:40:52 2021
 Charted by: Time scaled 360/hour

3Ft Travel Time	ineTensio	3' Amplitude	Sector	VDL	1 Sector Map 8
274 (usec) 174	(lb) 0 2000	(mV) 100	Amplitude Average 200	(usec) 1200	
-9 Collar Locator 1		3' Amplified Amplitude X 5	0 150		
Gamma Ray		(mV) 20	Sector Amplitude Maximum		
0 (GAPI) 150			0 150		
TEMP (degF)			Sector Amplitude Minimum		
			0 150		





3Ft Travel Time 274 (usec) 174	Line Tension (lb) 0 2000	3' Amplitude (mV) 100	Sector Amplitude Average	200	VDL (usec) 1200	1	Sector Map	8
-9 Collar Locator 1		3' Amplified Amplitude X 5 (mV) 20	0	150				
Gamma Ray (GAPI) 150			Sector Amplitude Maximum	0				
TEMP (degF)			Sector Amplitude Minimum	0				

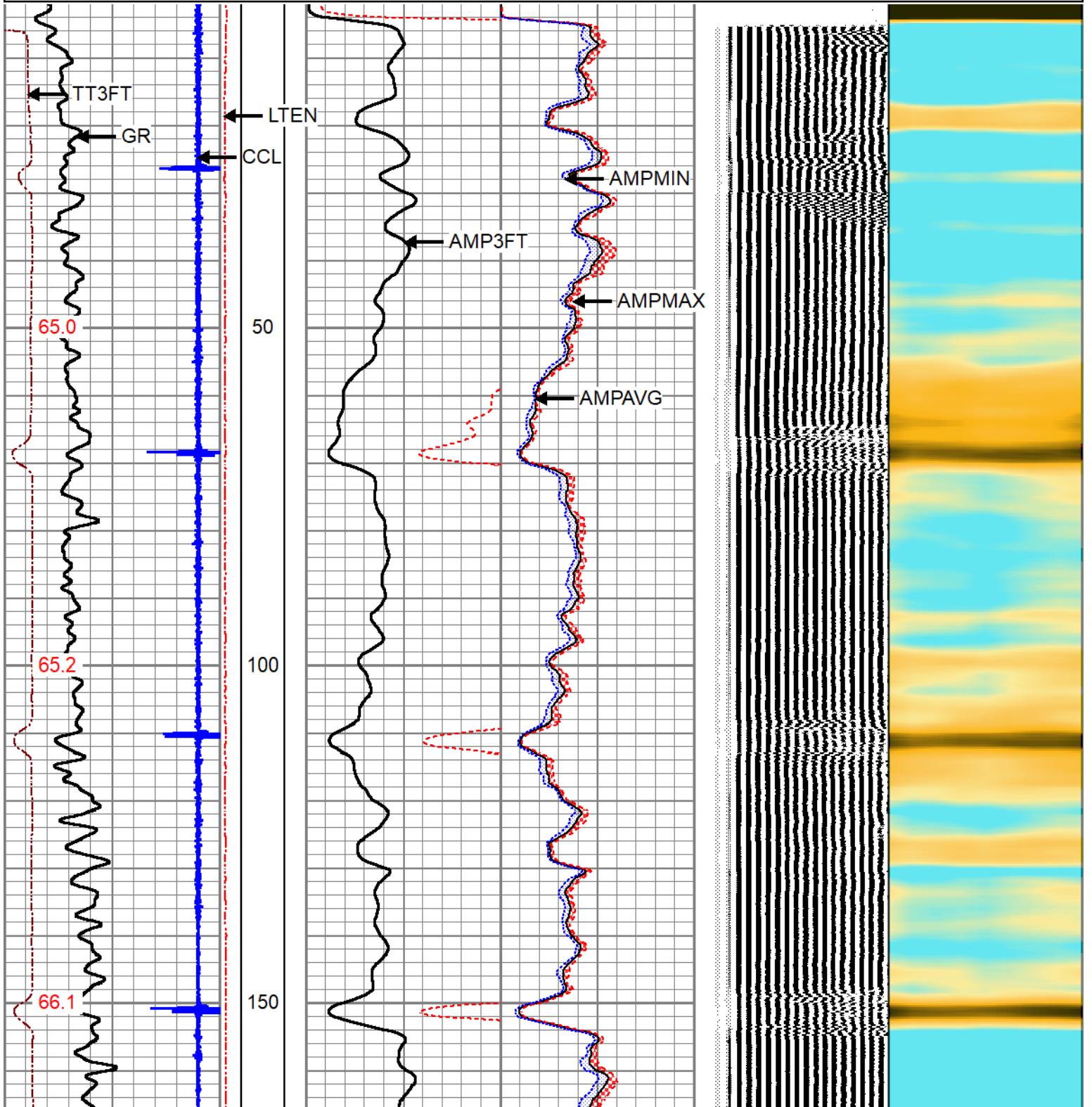


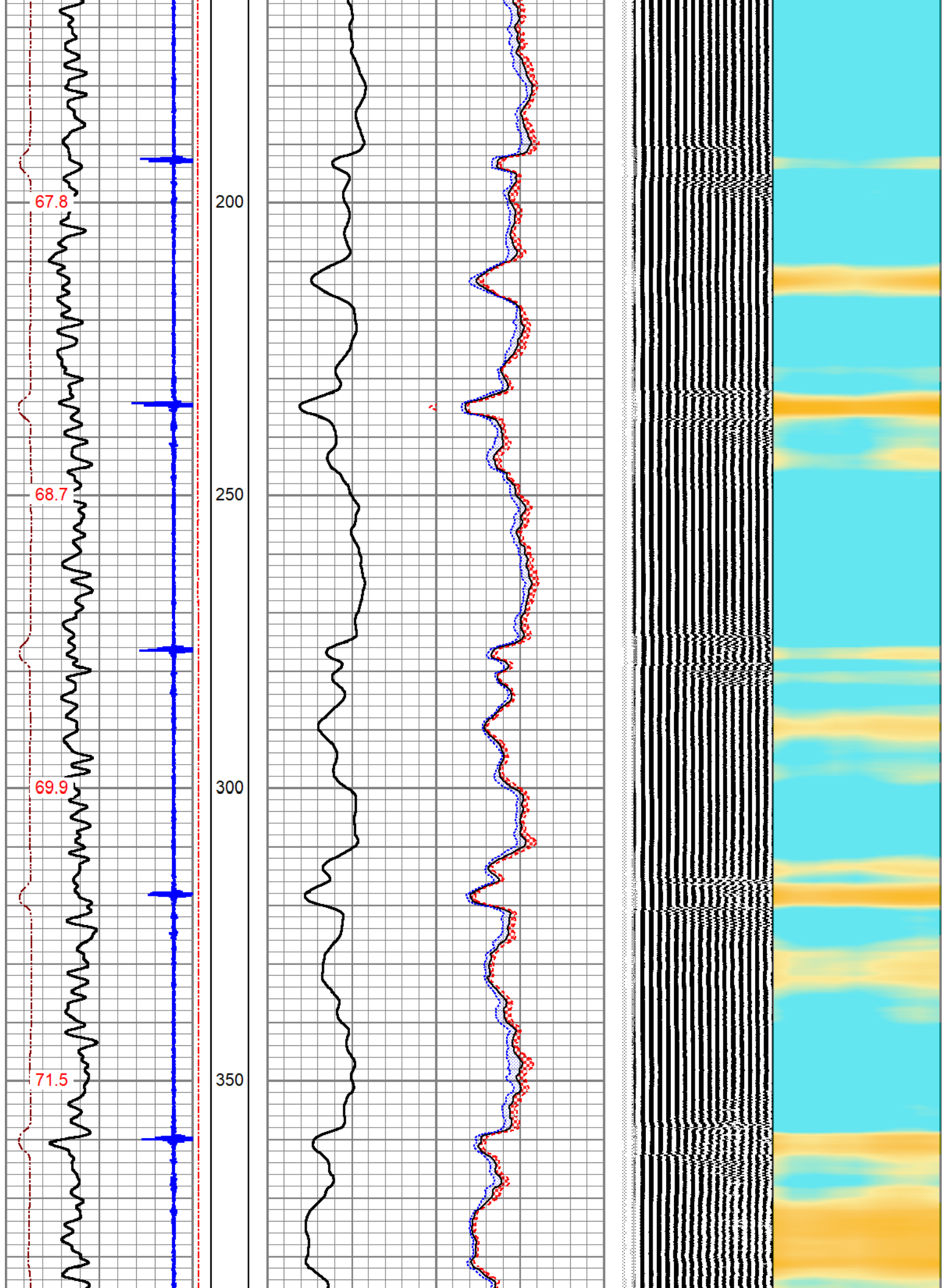
MAIN LOG

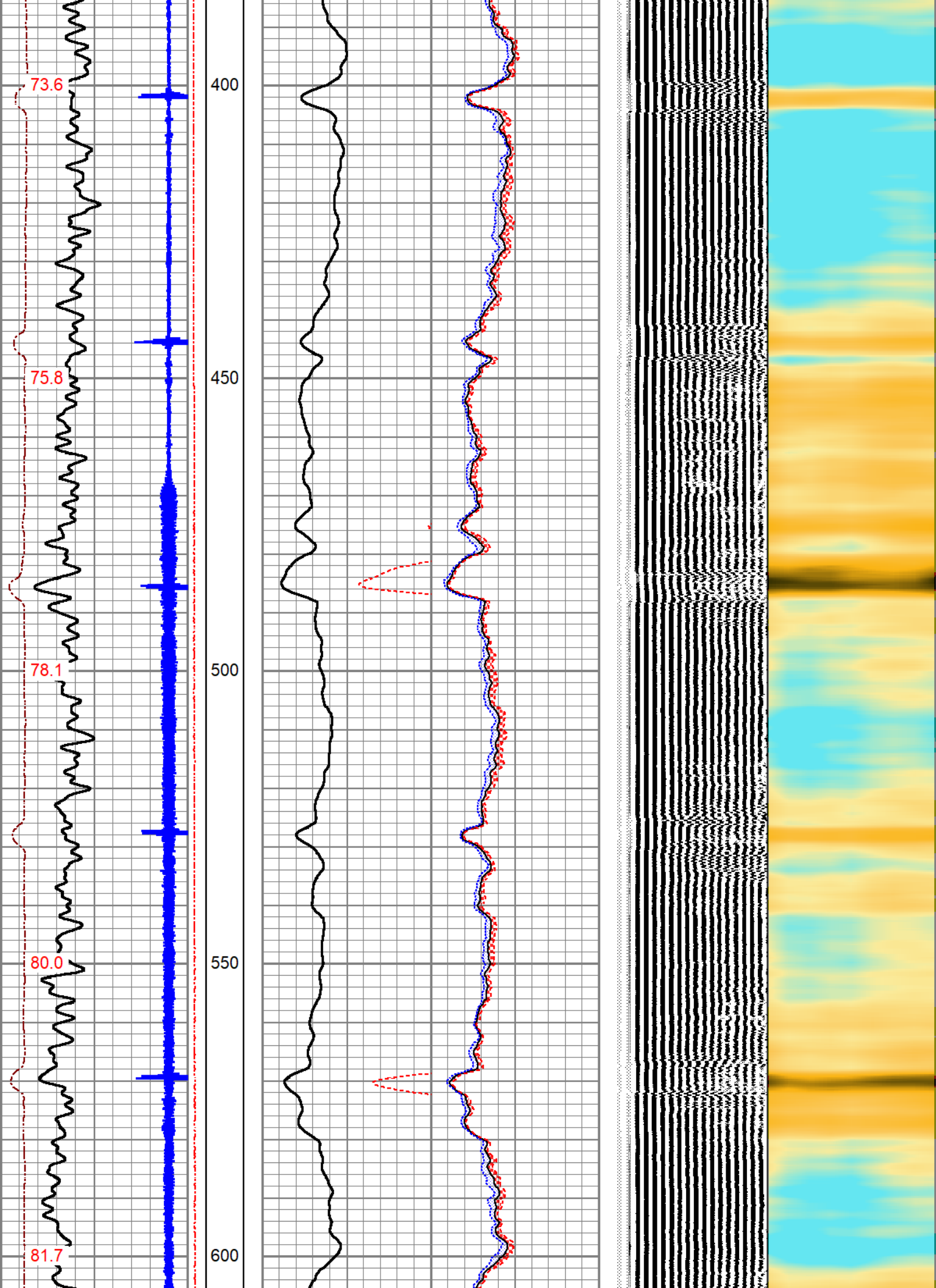
0 PSI APPLIED AT SURFACE

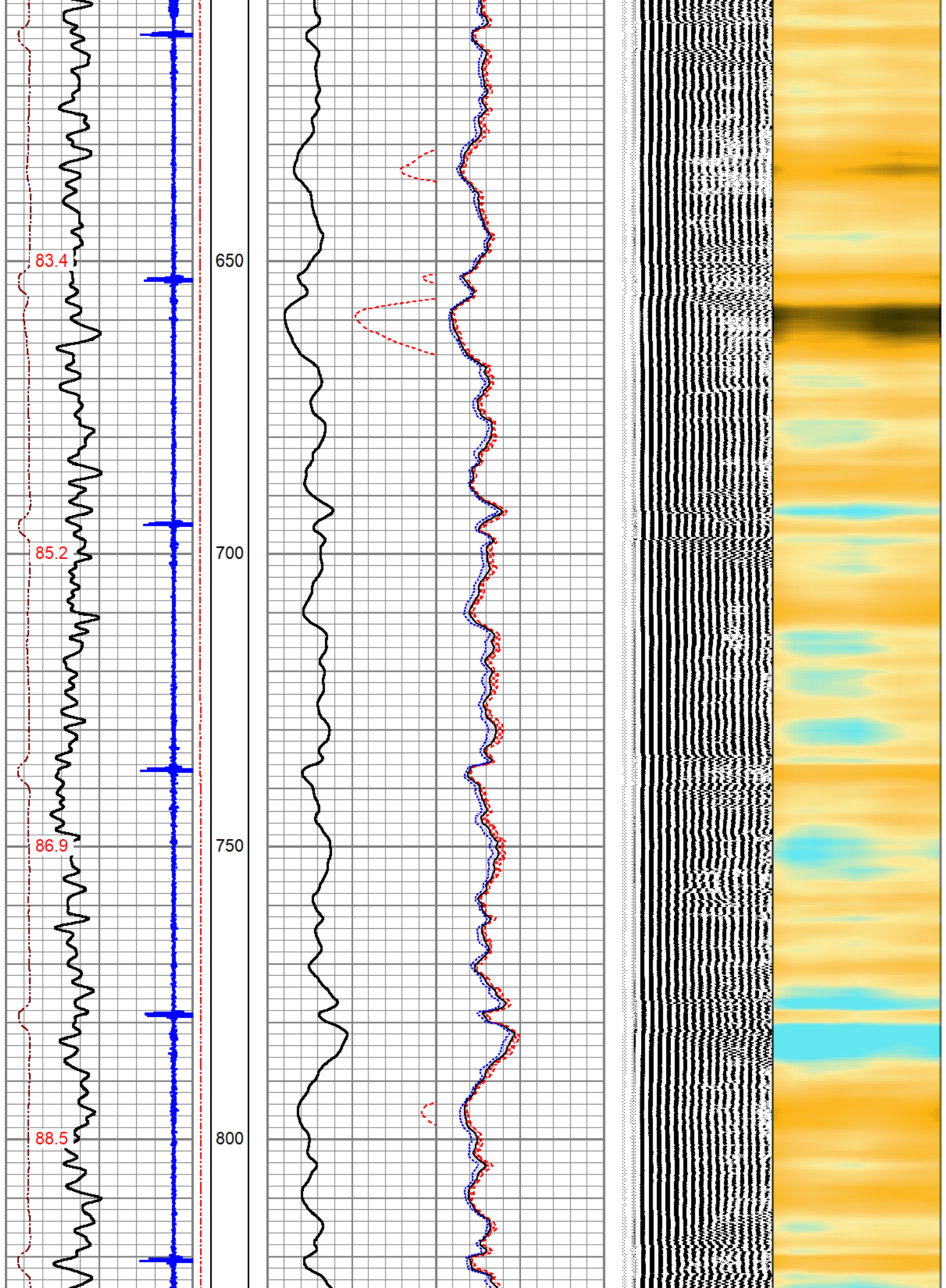
Database File snake_river_barlow_2-14_1107520036_20212110.db
 Dataset Pathname wildcat/barlow_2-14/scbl/pass8
 Presentation Format pnr_schl

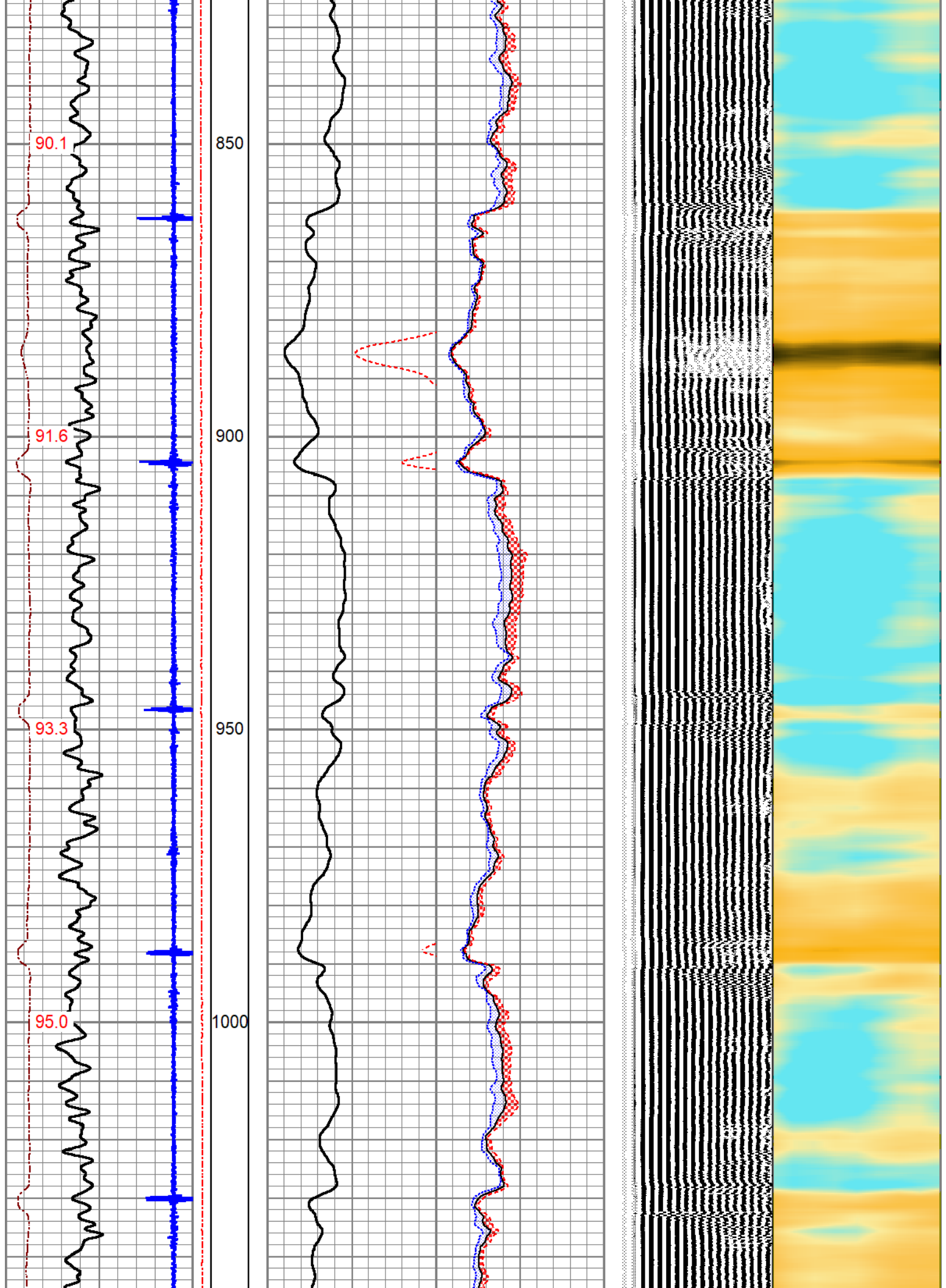
3Ft Travel Time		Line Tension (lb)	3' Amplitude		Sector Amplitude Average		VDL		Sector Map	8	
274	(usec)		174	0	(mV)	100	200	(usec)			1200
Collar Locator			1	3' Amplified Amplitude X 5		Sector Amplitude Maximum					
0	(GAPI)		100	0	(mV)	20	0	150			
TEMP					Sector Amplitude Minimum						
(degF)					0		150				
					0		150				

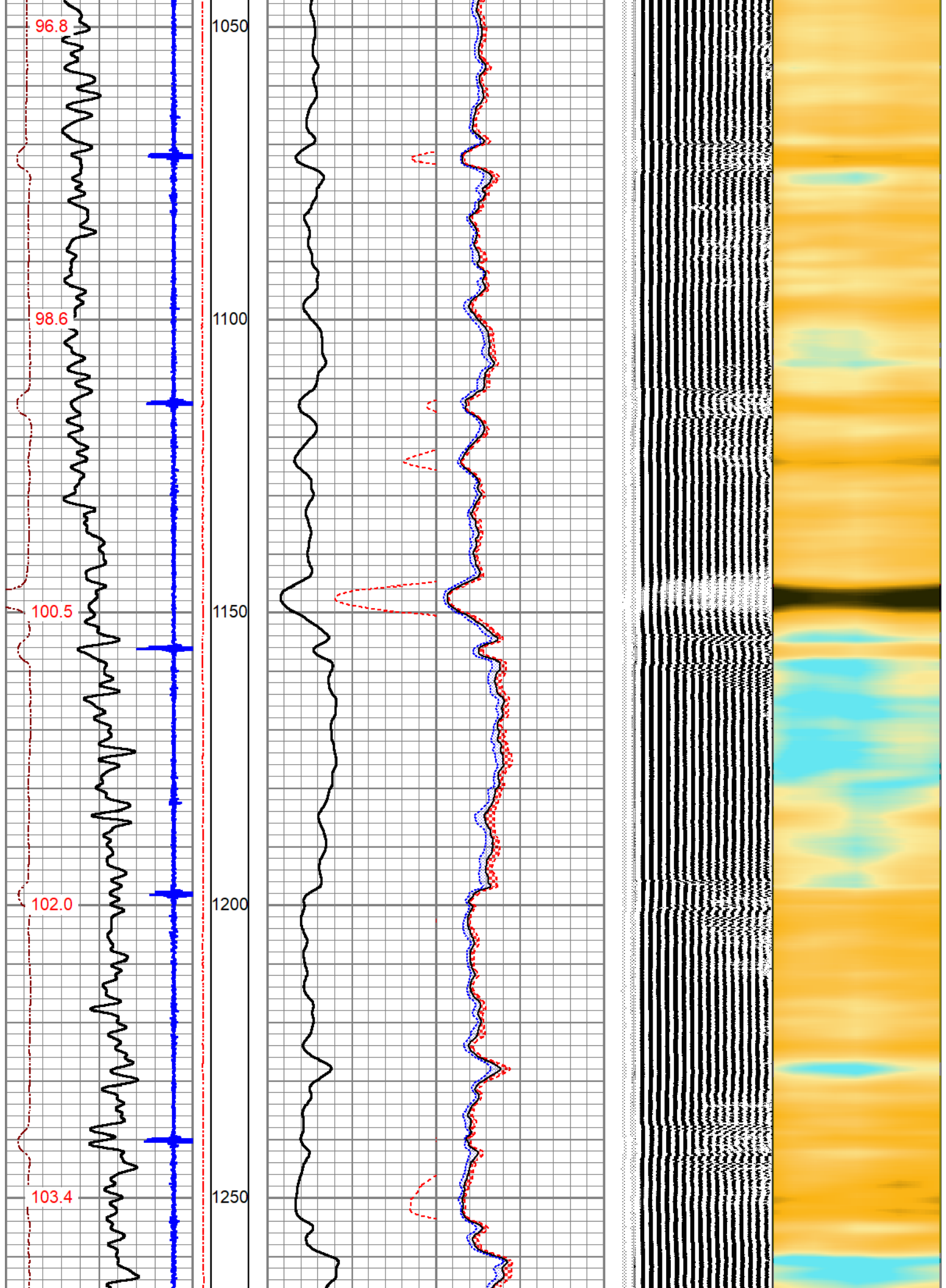


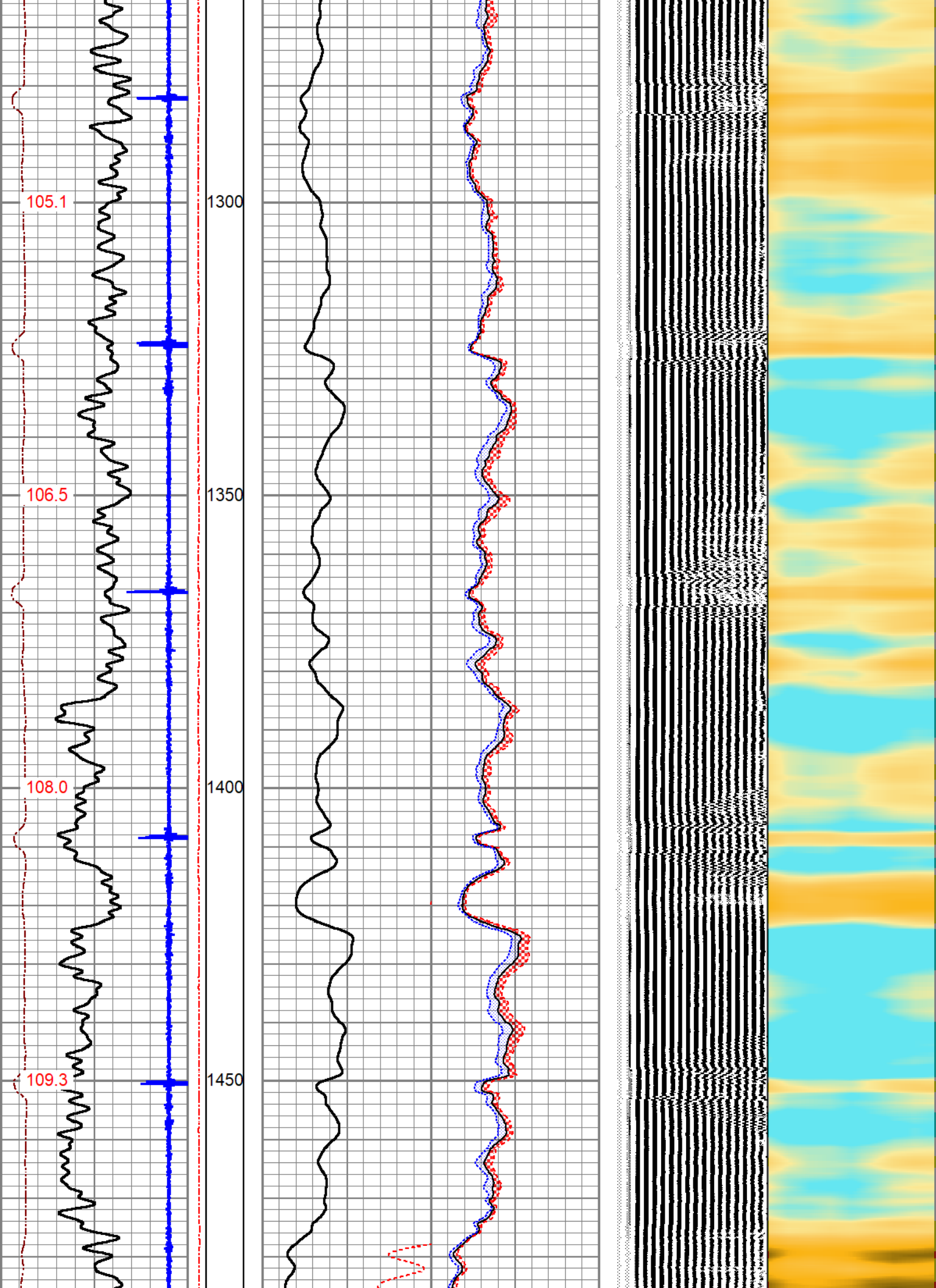


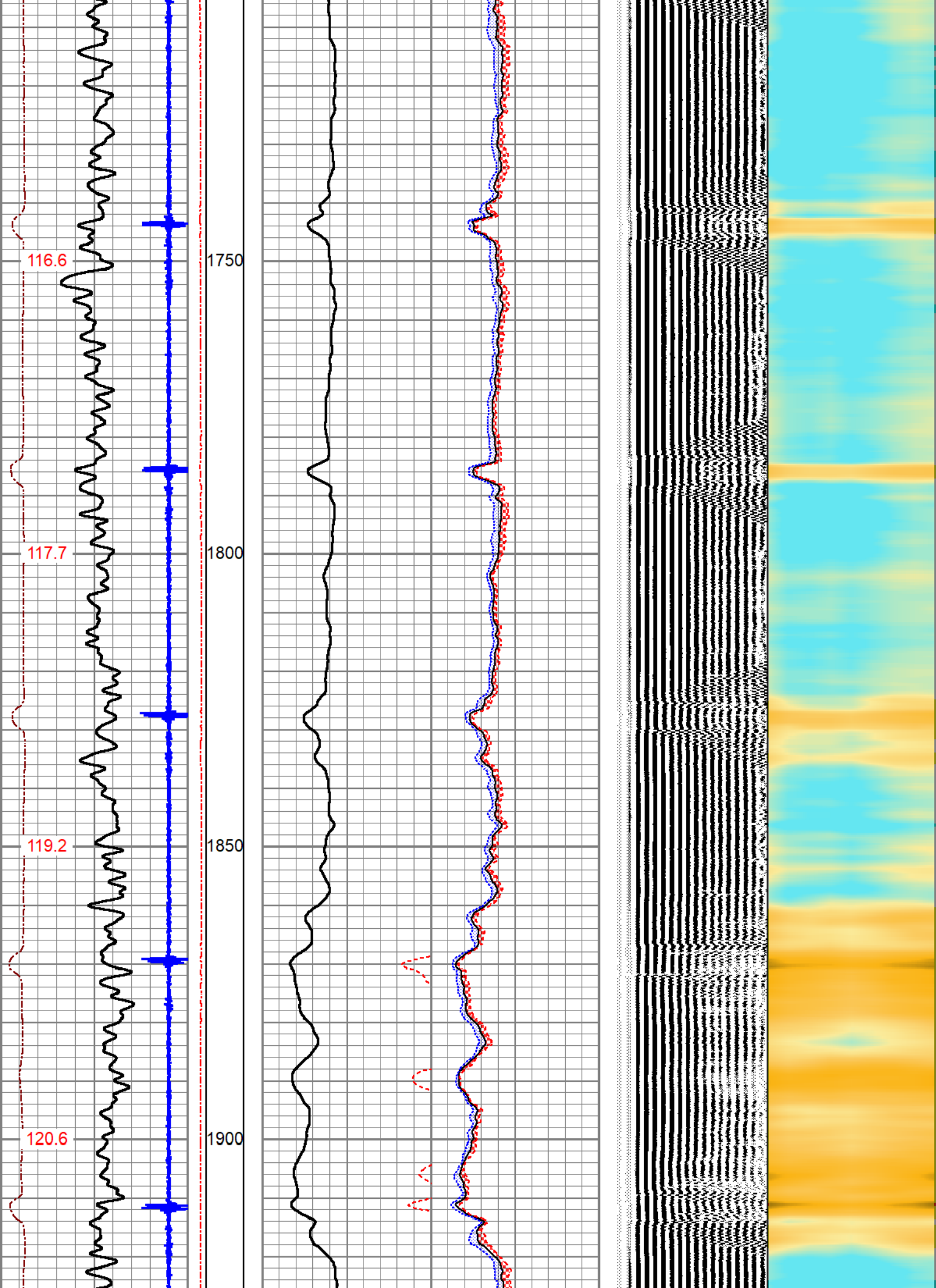


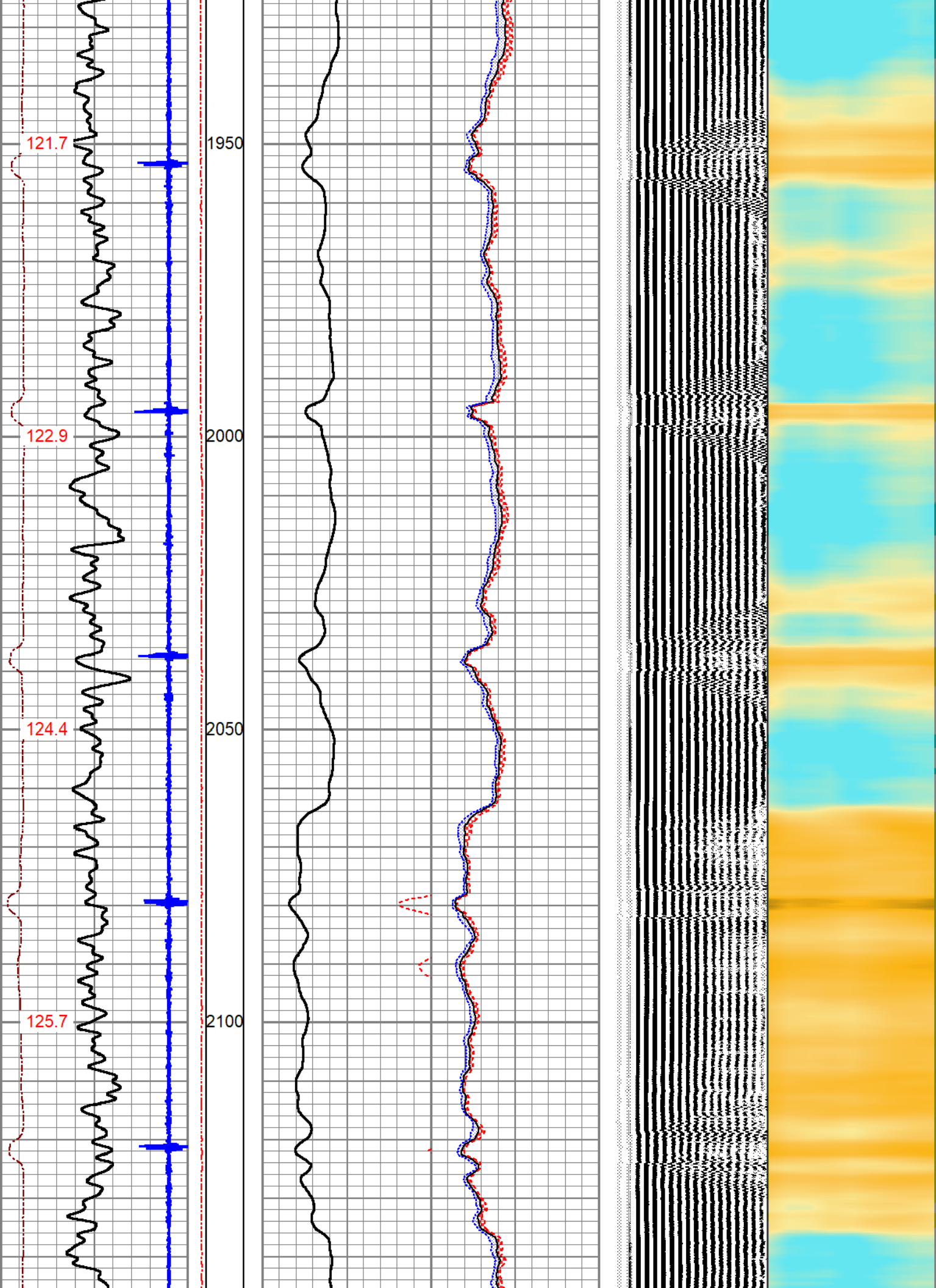


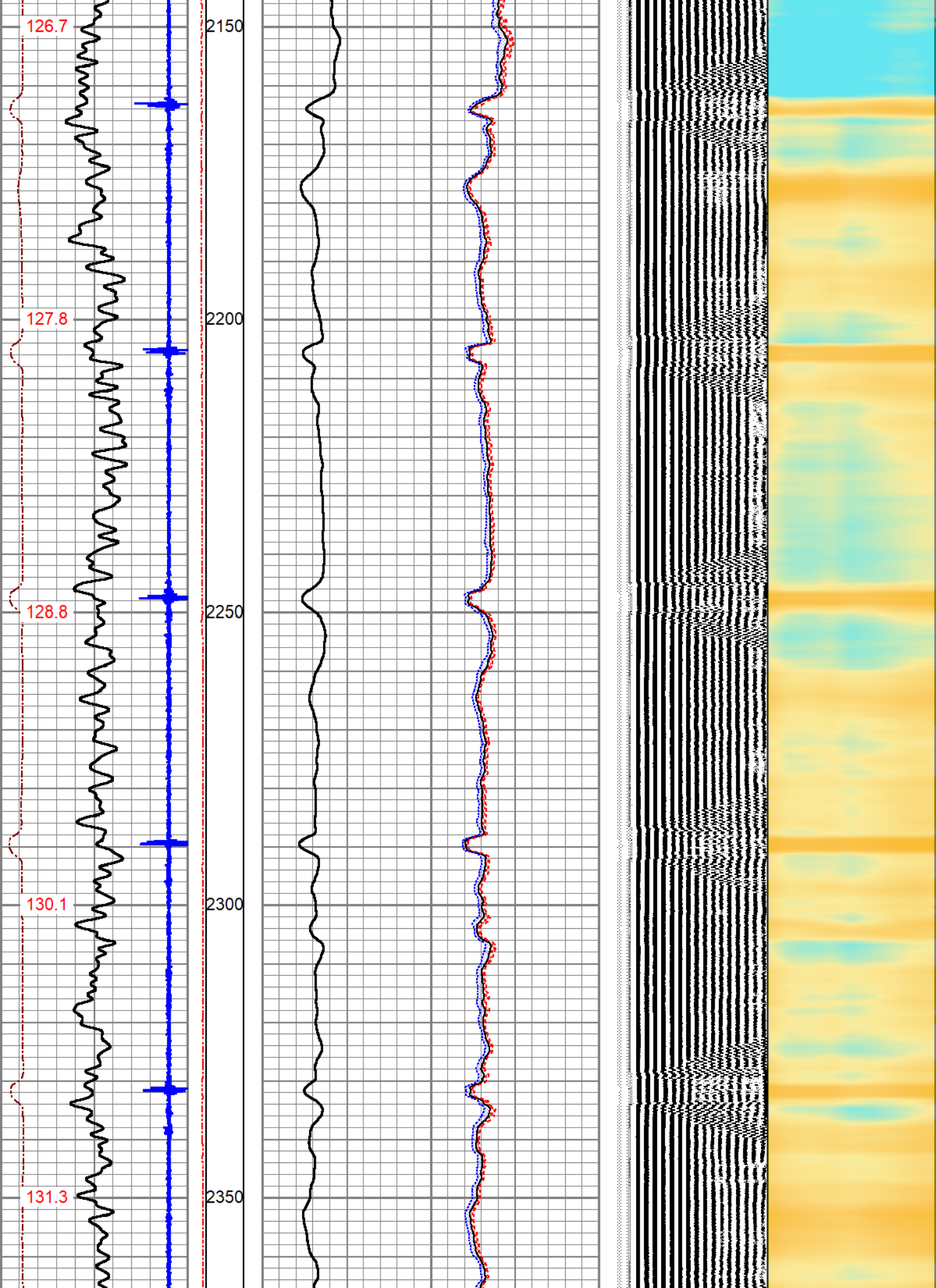


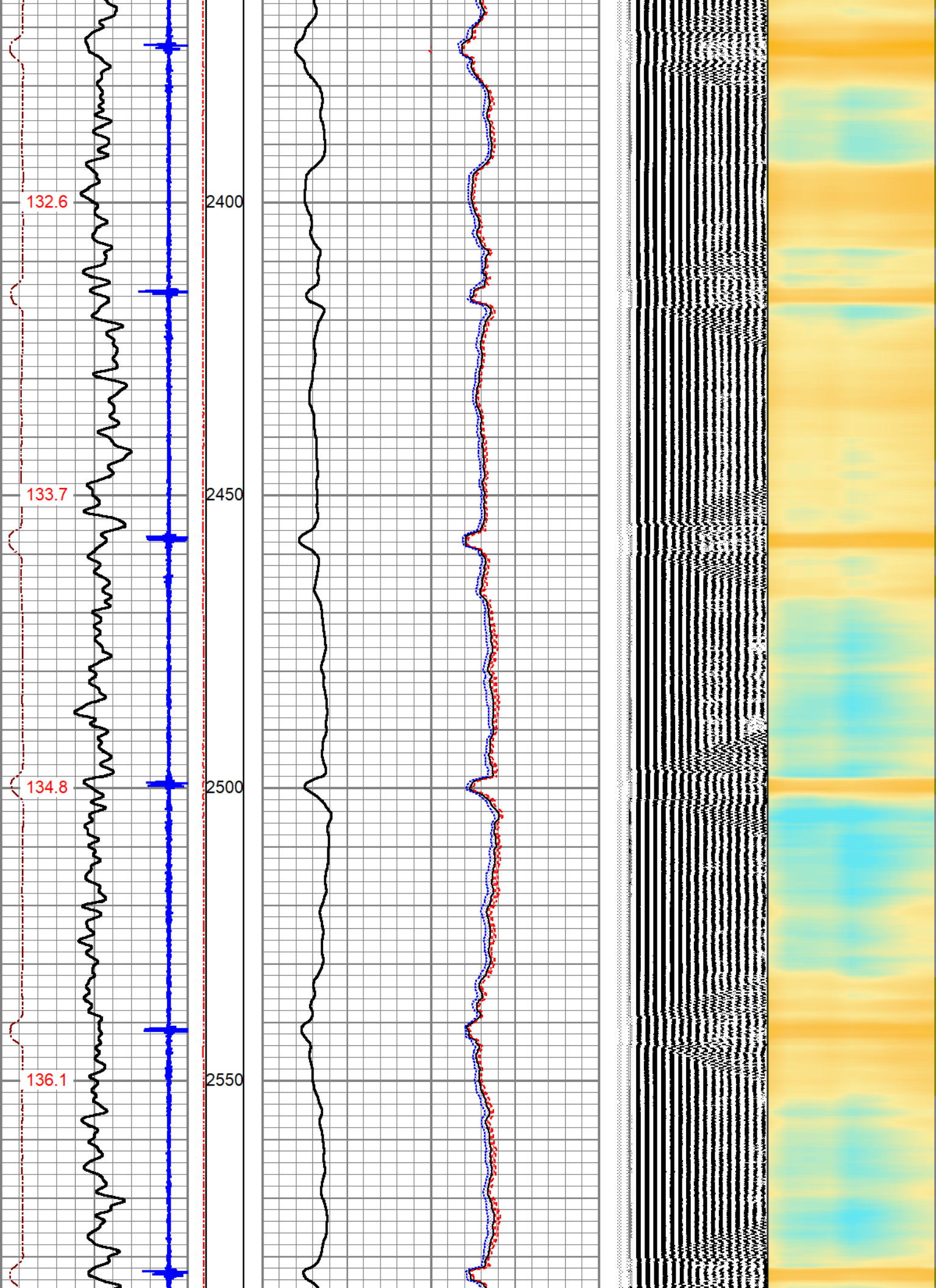


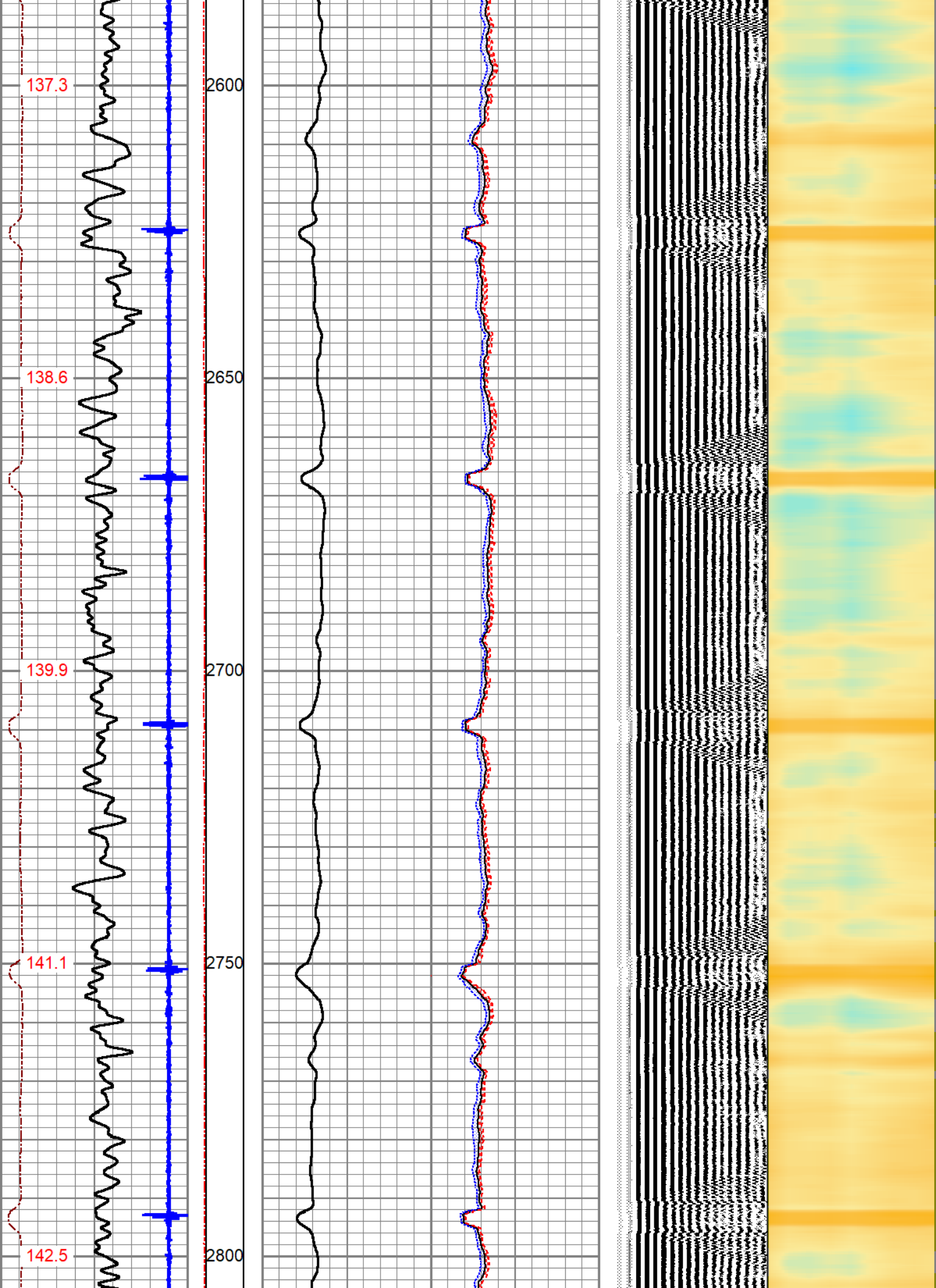


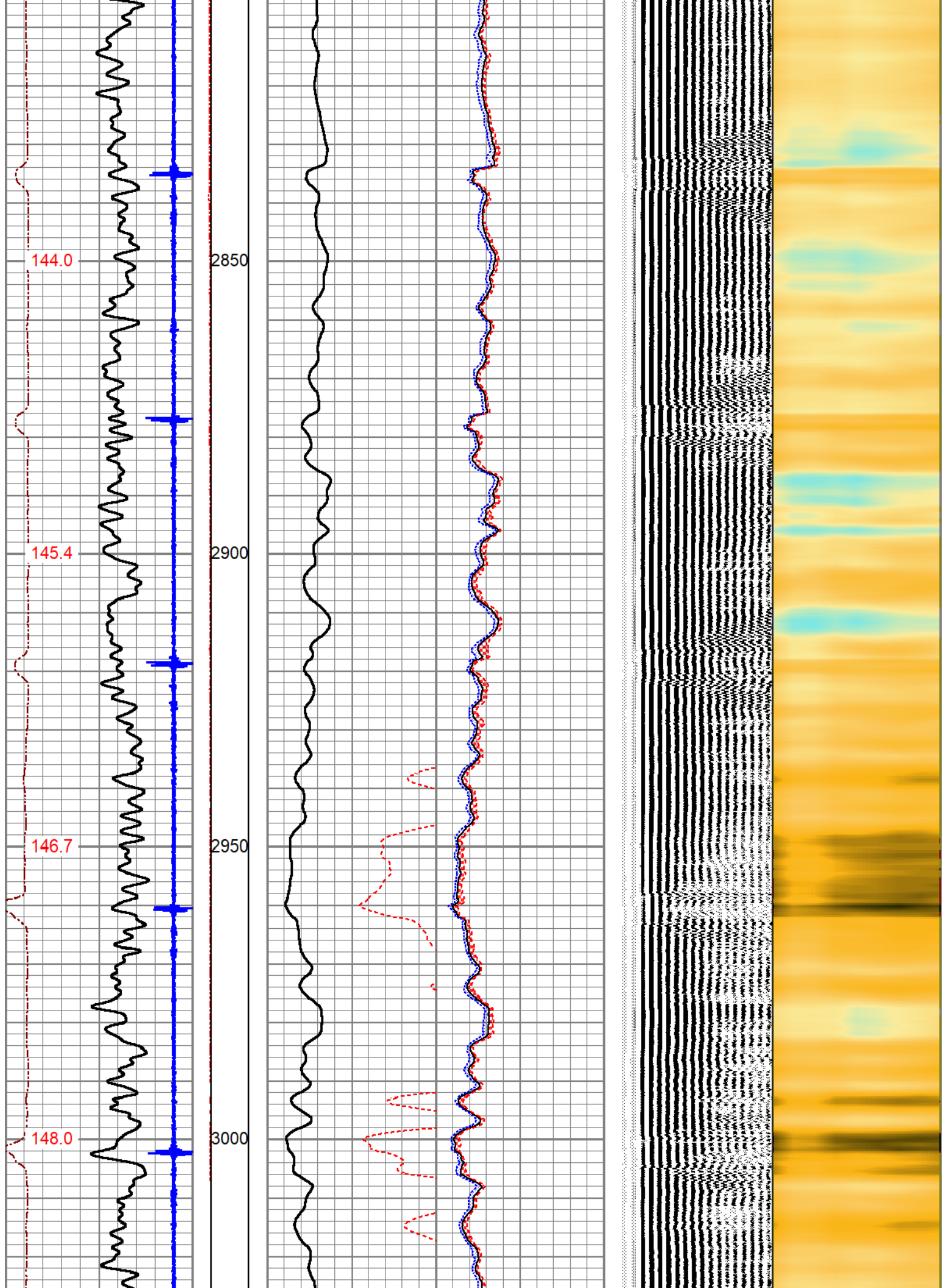


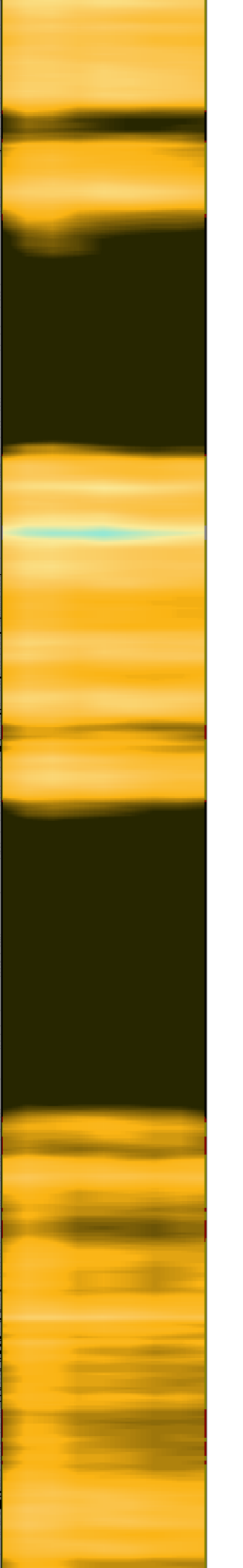
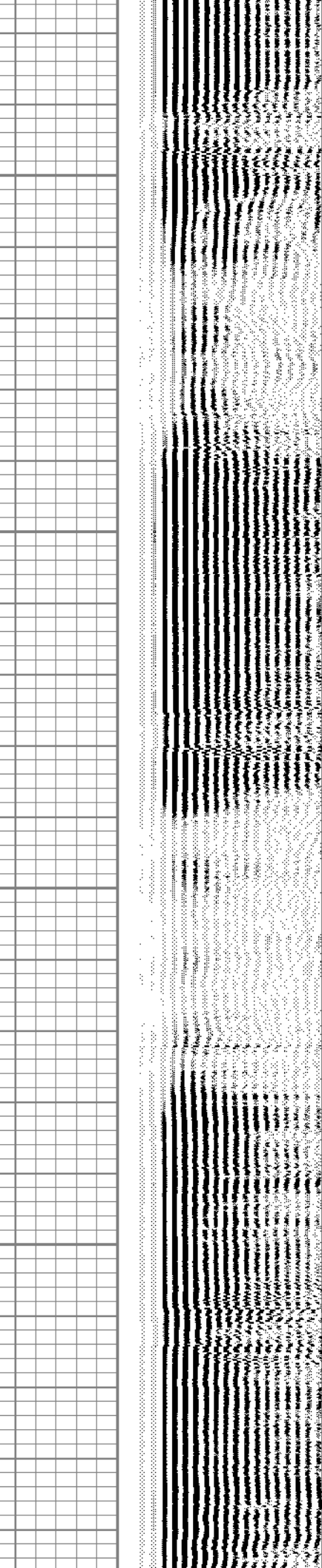
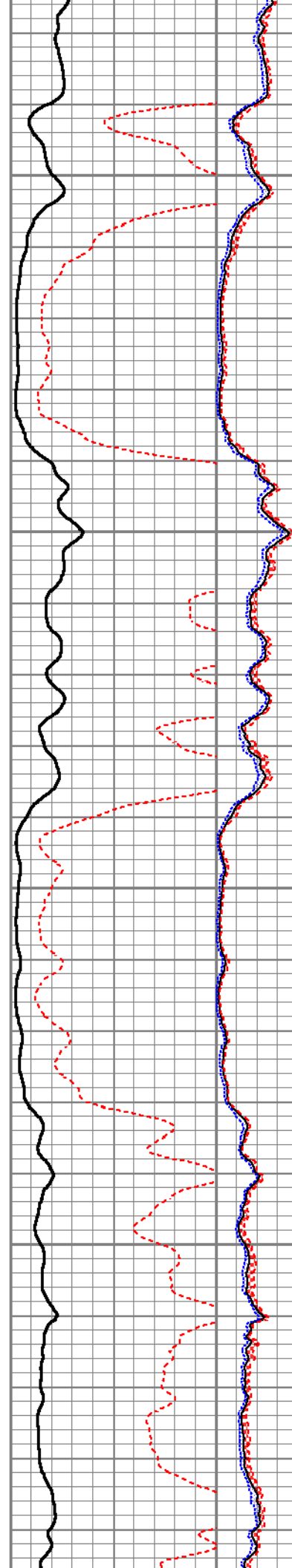
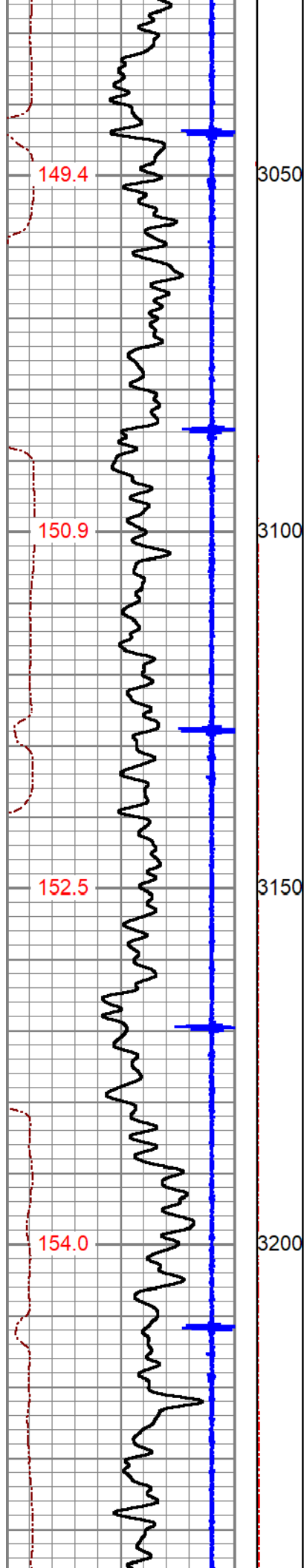


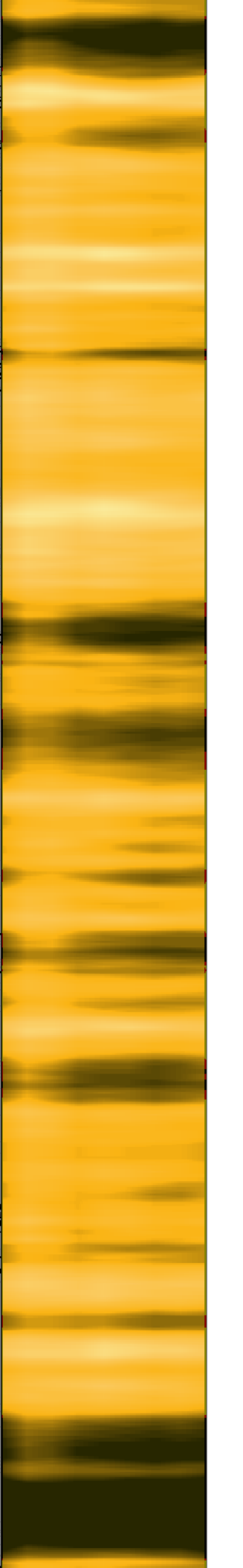
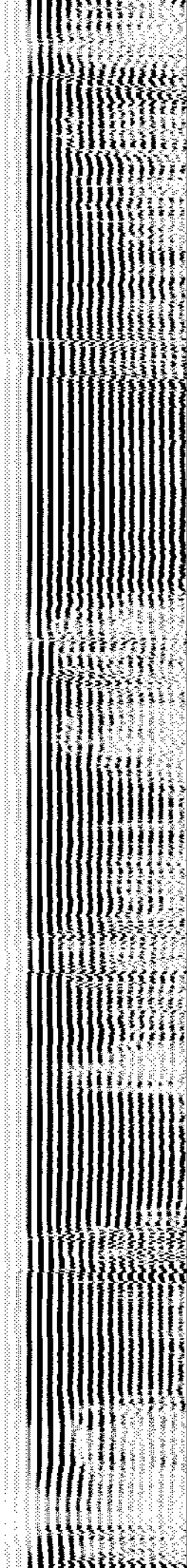
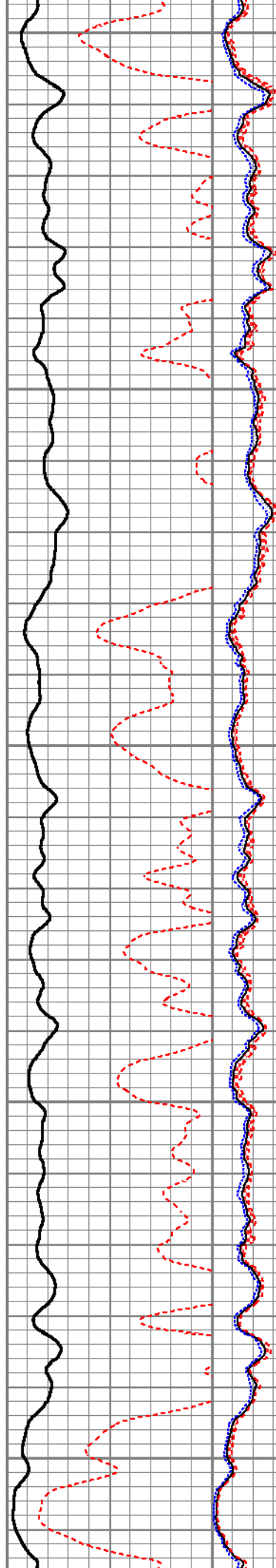
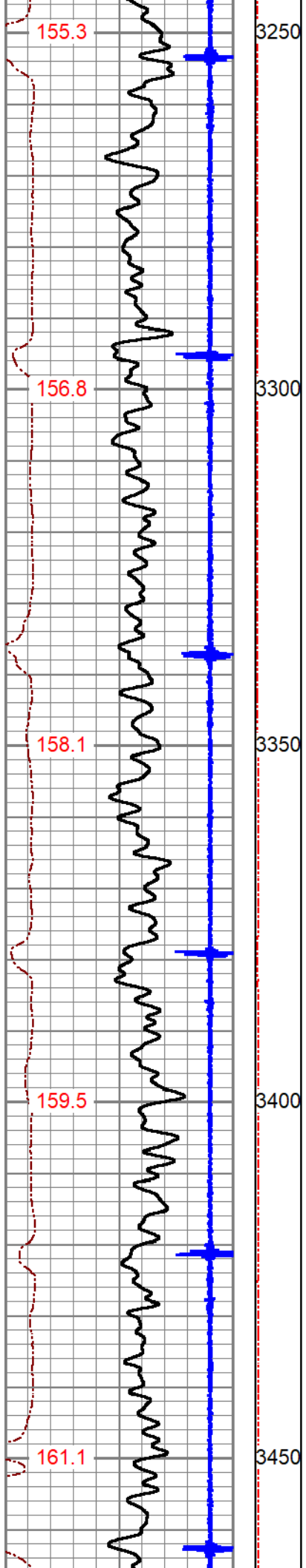


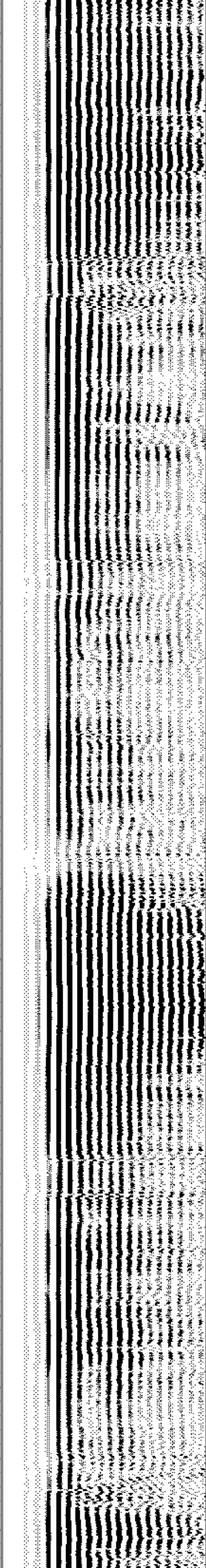
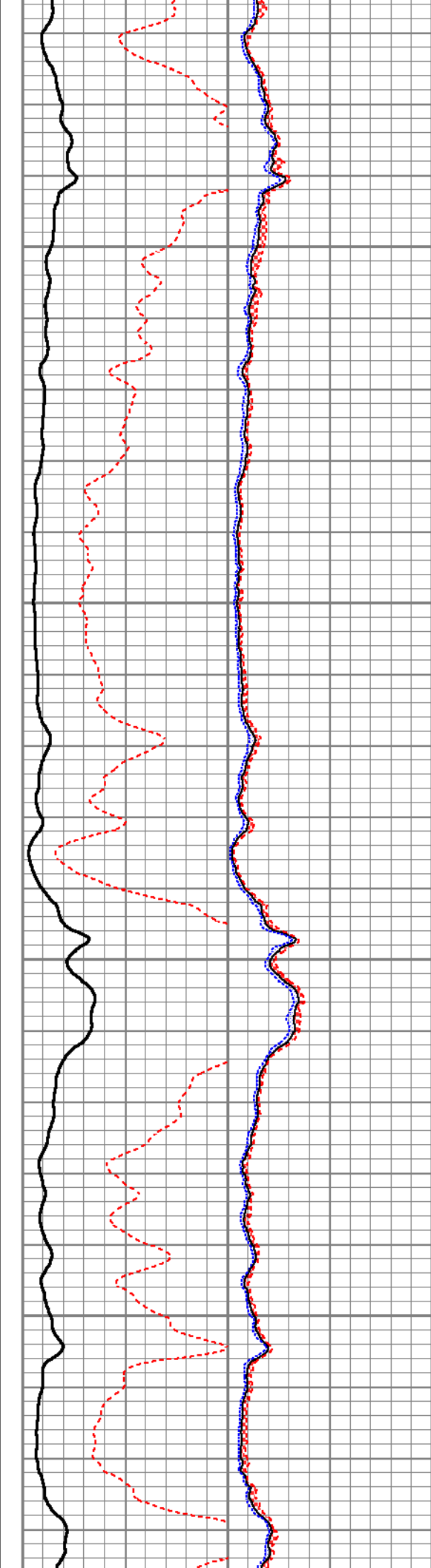
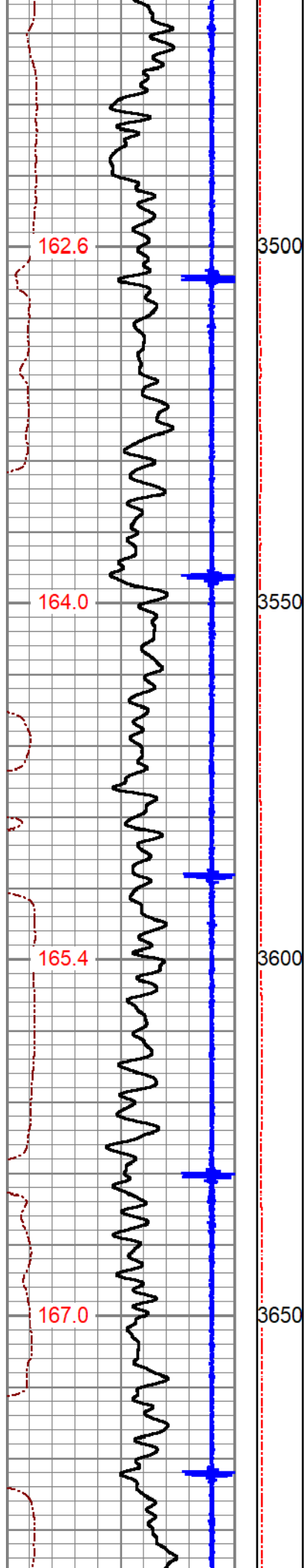


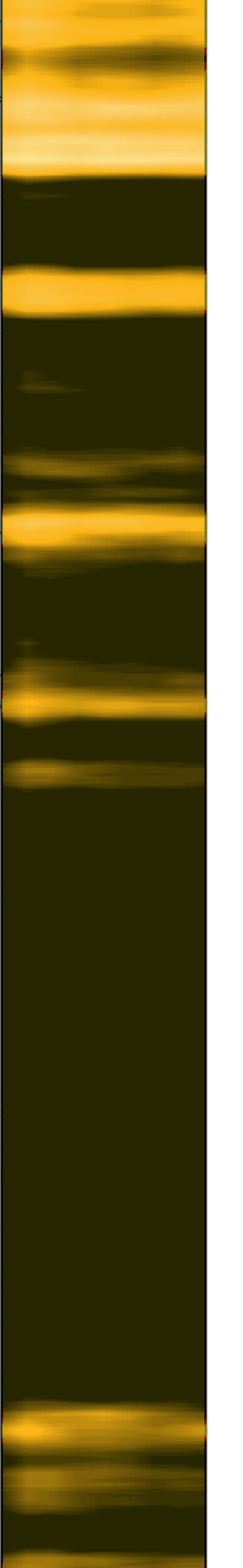
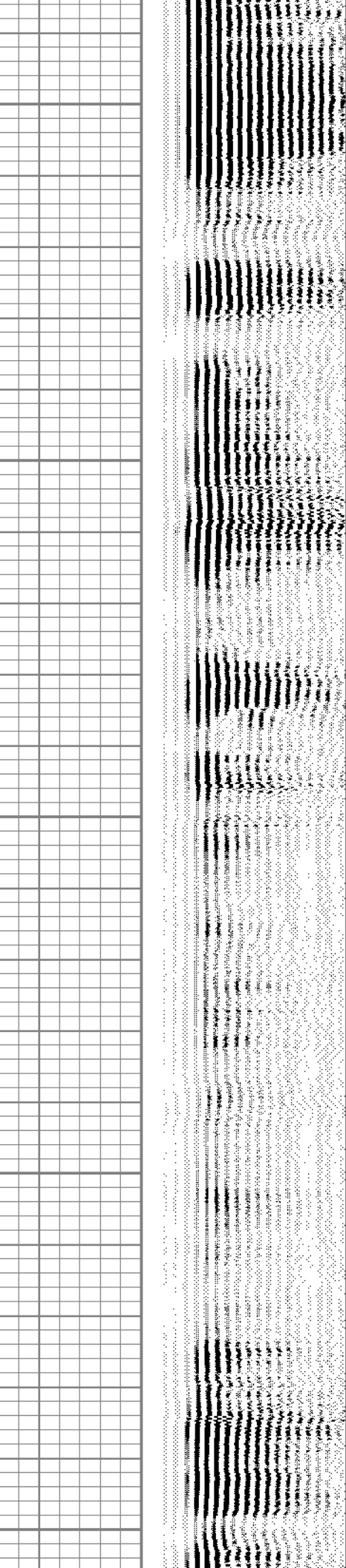
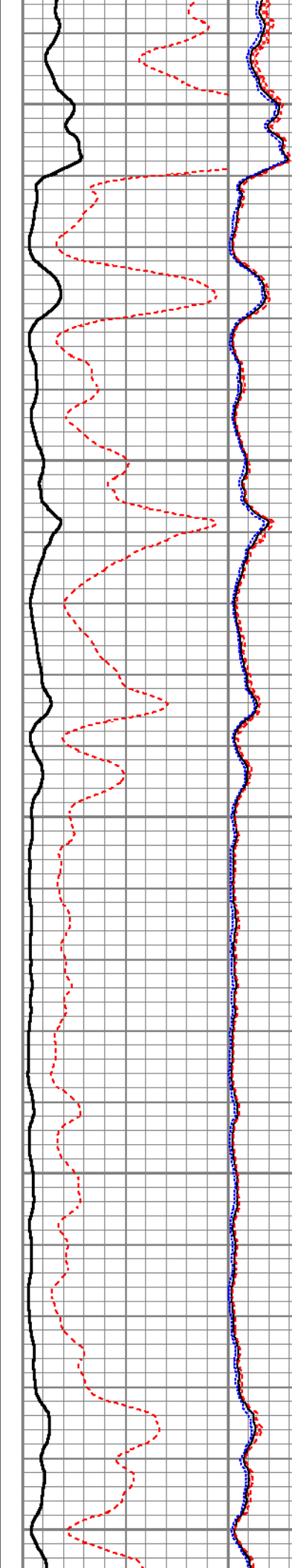
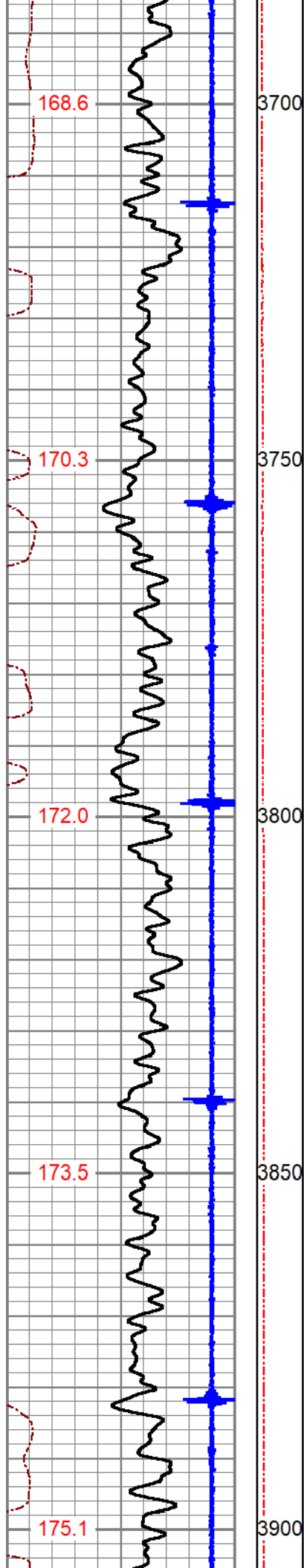


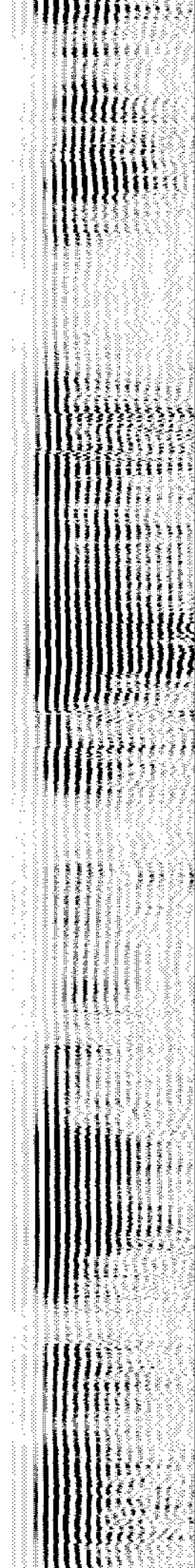
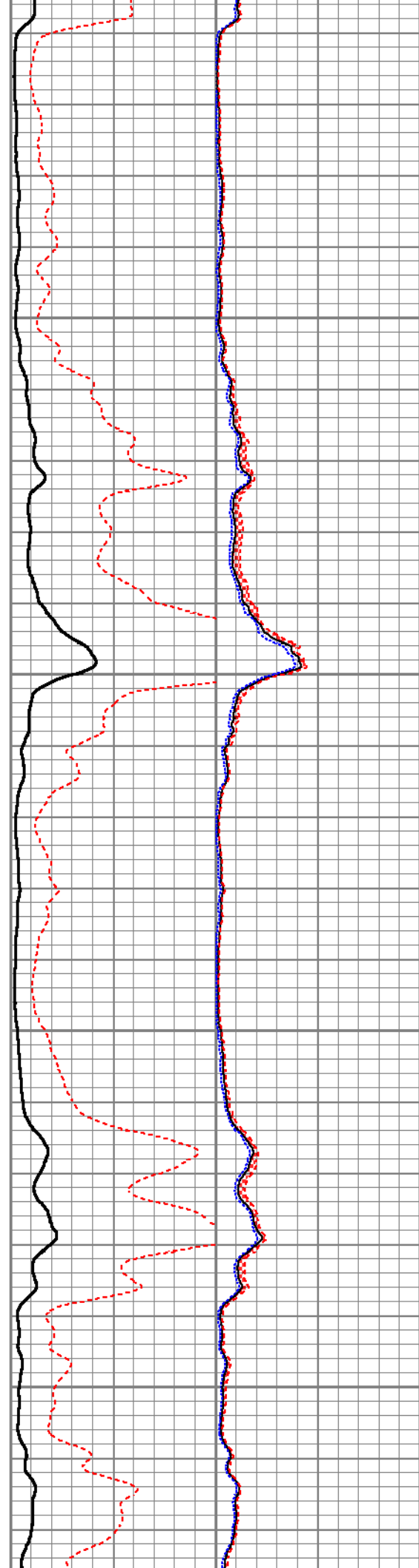
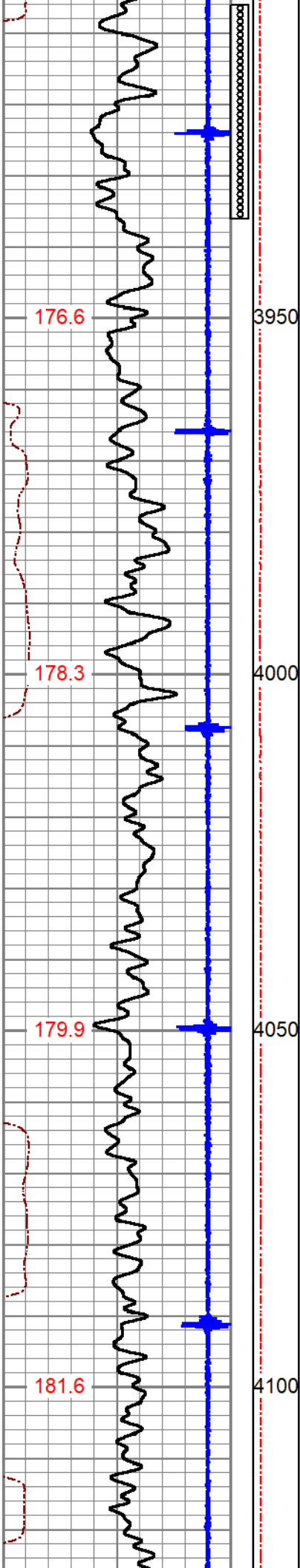


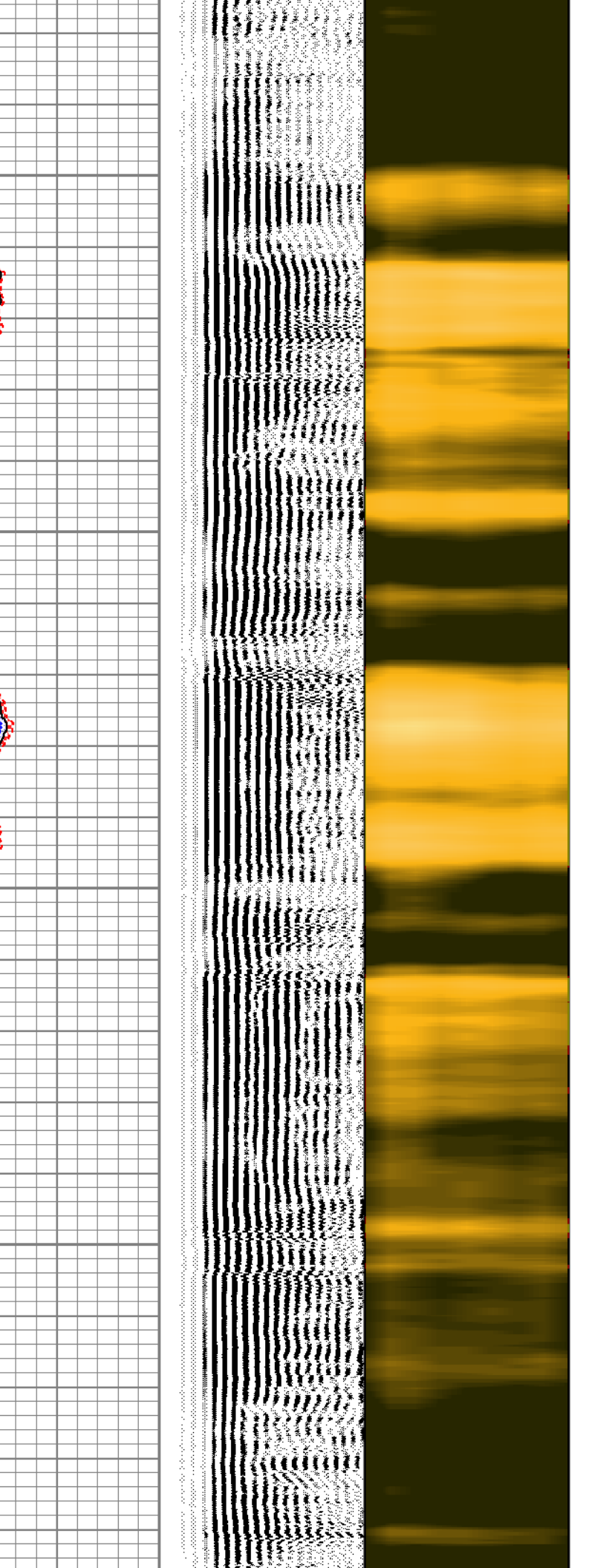
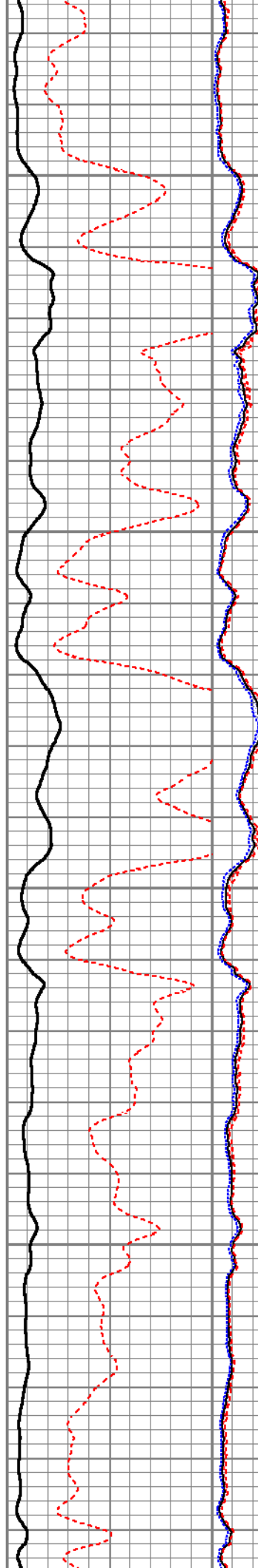
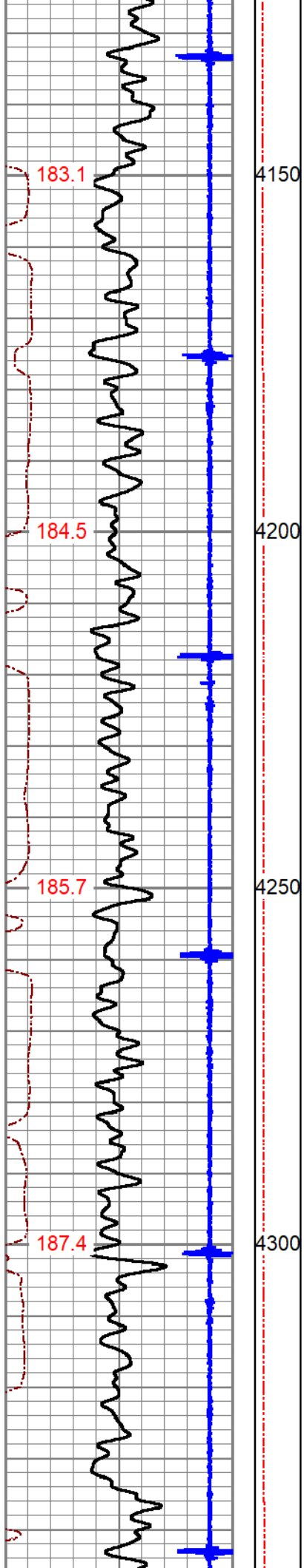


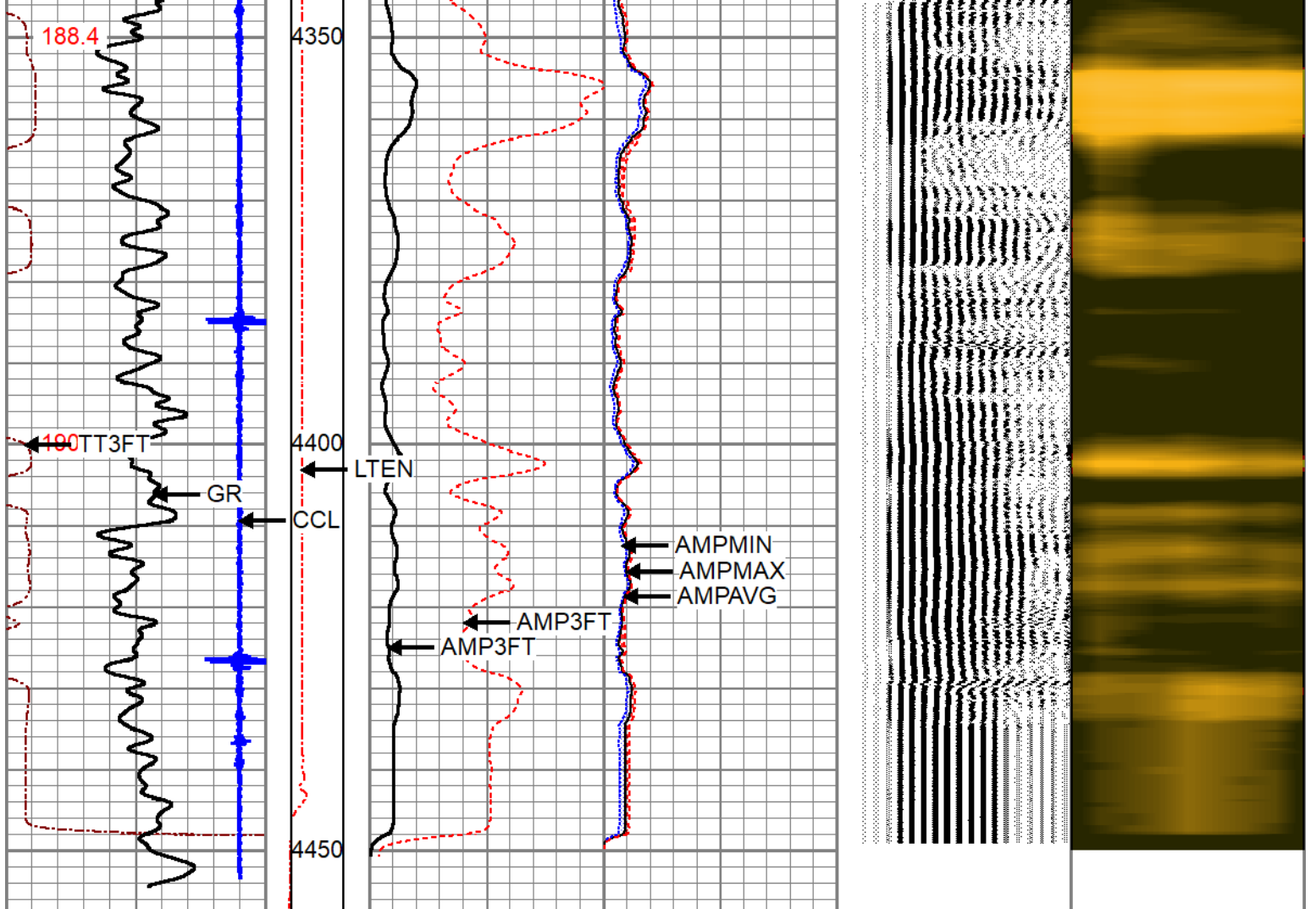












3Ft Travel Time 274 (usec) 174	Line Tension (lb) 0 2000	3' Amplitude (mV) 0 100	Sector Amplitude Average 0 150	VDL (usec) 200 1200	1 Sector Map 8
-9 Collar Locator 1		3' Amplified Amplitude X 5 (mV) 0 20	Sector Amplitude Maximum 0 150		
Gamma Ray (GAPI) 0 100			Sector Amplitude Minimum 0 150		
TEMP (degF)					



REPEAT SECTION

0 PSI APPLIED AT SURFACE

Database File snake_river_barlow_2-14_1107520036_20212110.db
 Dataset Pathname wildcat/barlow_2-14/scbl/pass7
 Presentation Format pinr_scbl
 Dataset Creation Wed Oct 13 01:08:43 2021
 Charted by Depth in Feet scaled 1:240

3Ft Travel Time 274 (usec) 174	Line Tension (lb) 0 2000	3' Amplitude (mV) 0 100	Sector Amplitude Average 0 150	VDL (usec) 200 1200	1 Sector Map 8
-9 Collar Locator 1		3' Amplified Amplitude X 5 (mV) 0 20	Sector Amplitude Maximum 0 150		
			Sector Amplitude Minimum 0 150		

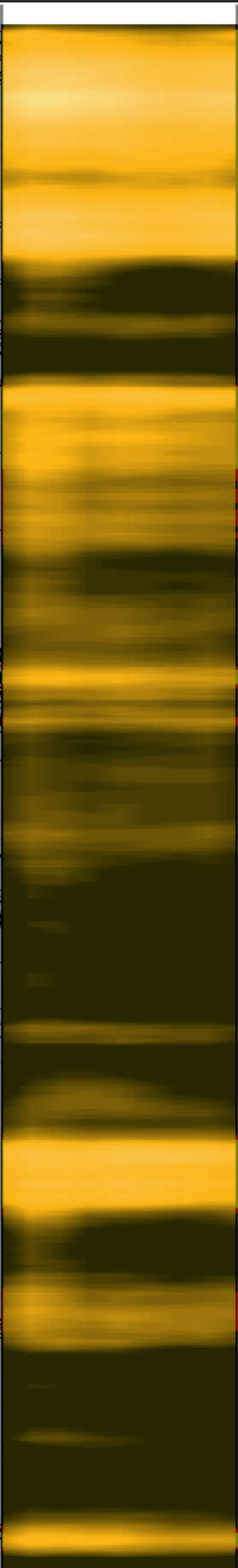
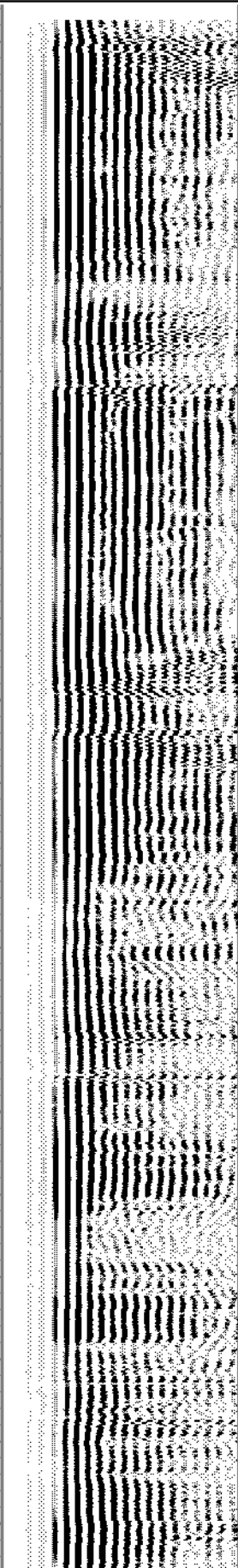
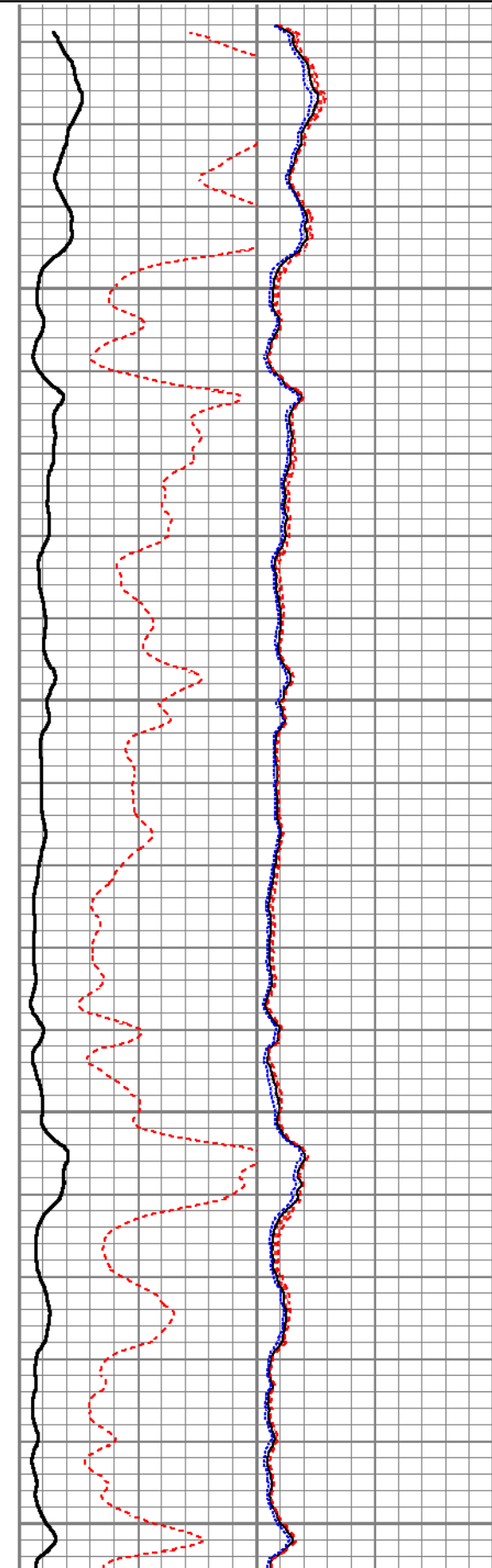
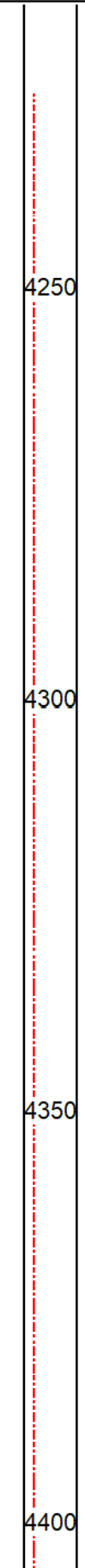
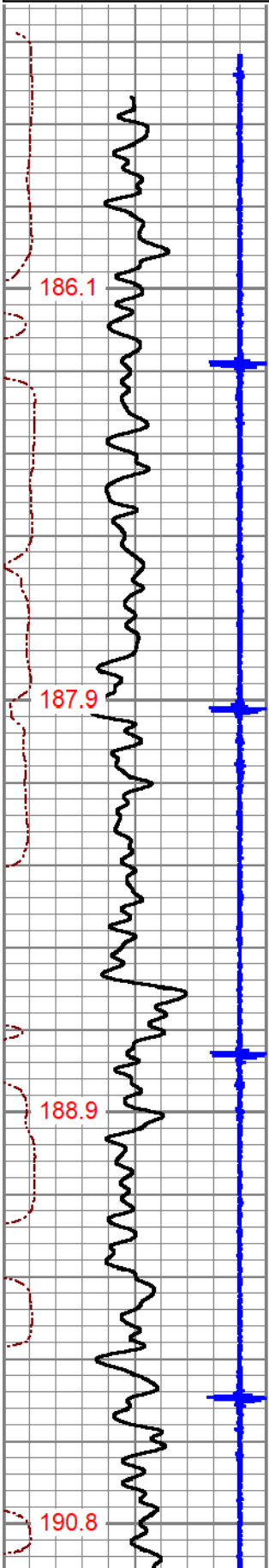
Gamma Ray
(GAPI) 0 100

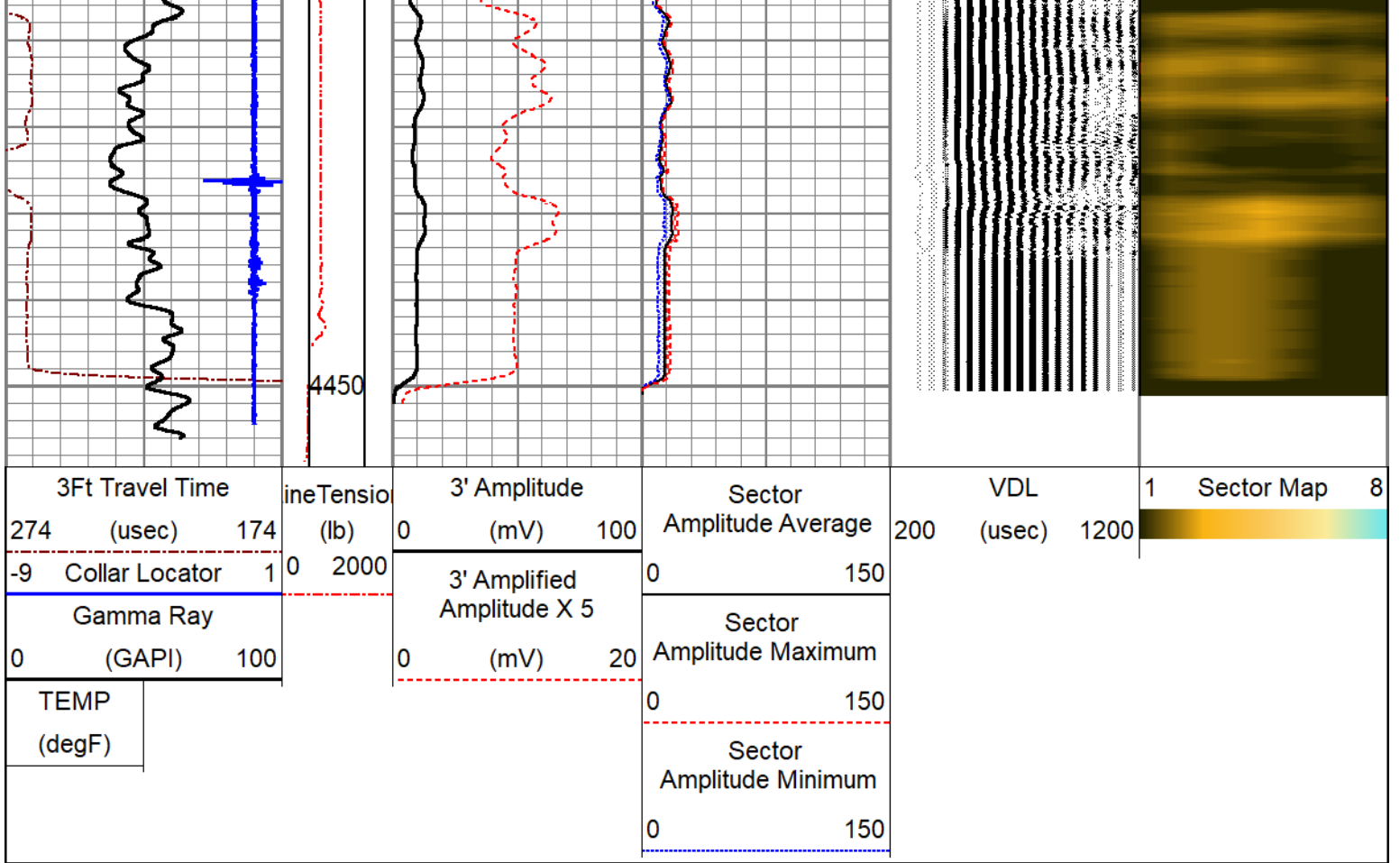
TEMP
(degF)

Amplitude X 5
(mV) 0 20

Amplitude Maximum
0 150

Sector
Amplitude Minimum
0 150





Calibration Report

Database File snake_river_barlow_2-14_1107520036_20212110.db
 Dataset Pathname wildcat/barlow_2-14/scbl/pass8
 Dataset Creation Wed Oct 13 01:15:37 2021

Gamma Ray Calibration Report

Serial Number: 070153
 Tool Model: GR-A
 Performed: Wed Oct 13 00:40:34 2021
 Calibrator Value: 979.0 GAPI
 Background Reading: 41.4 cps
 Calibrator Reading: 1618.4 cps
 Sensitivity: 0.6208 GAPI/cps

Segmented Cement Bond Log Calibration Report

Serial Number: FW1210-41
 Tool Model: RBL-DCT
 Calibration Casing Diameter: 5.500 in
 Calibration Depth: 29.933 ft

Master Calibration, performed Wed Oct 13 00:39:38 2021:

	Raw (v)		Calibrated (mv)		Results	
	Zero	Cal	Zero	Cal	Gain	Offset
3'	0.004	1.478	1.000	71.921	48.100	0.811

CAL	0.004	1.537	1.000	71.921	49.380	0.793
5'	0.004	1.440				
SUM						
S1	0.025	1.477	0.000	100.000	68.865	-1.747
S2	0.004	1.502	0.000	100.000	66.772	-0.298
S3	0.005	1.503	0.000	100.000	66.755	-0.303
S4	0.004	1.503	0.000	100.000	66.693	-0.246
S5	0.004	1.490	0.000	100.000	67.308	-0.282
S6	0.005	1.485	0.000	100.000	67.570	-0.351
S7	0.005	1.486	0.000	100.000	67.550	-0.356
S8	0.005	1.505	0.000	100.000	66.629	-0.308

Air Zero Calibration, performed Wed Oct 13 00:39:59 2021:

	Raw (v)		Calibrated (v)		Results	
	Zero		Zero		Offset	
3'	0.004		0.000		0.000	
5'	0.005		0.000		-0.001	
SUM						
S1	0.026		0.000		-0.001	
S2	0.004		0.000		0.000	
S3	0.004		0.000		0.000	
S4	0.003		0.000		0.001	
S5	0.004		0.000		0.000	
S6	0.004		0.000		0.001	
S7	0.004		0.000		0.001	
S8	0.004		0.000		0.001	

Temperature Calibration Report

Serial Number: FW1210-41
Tool Model: RBL-DCT
Performed: Wed Oct 13 00:40:44 2021

	Reference	Reading
Low Reference:	0.00 degF	0.00 degF
High Reference:	1.00 degF	1.00 degF
Gain:	0.83	
Offset:	0.00	
Delta Spacing	1	



Company SNAKE RIVER OIL & GAS
Well BARLOW #2-14
Field WILDCAT
County PAYETTE
State IDAHO