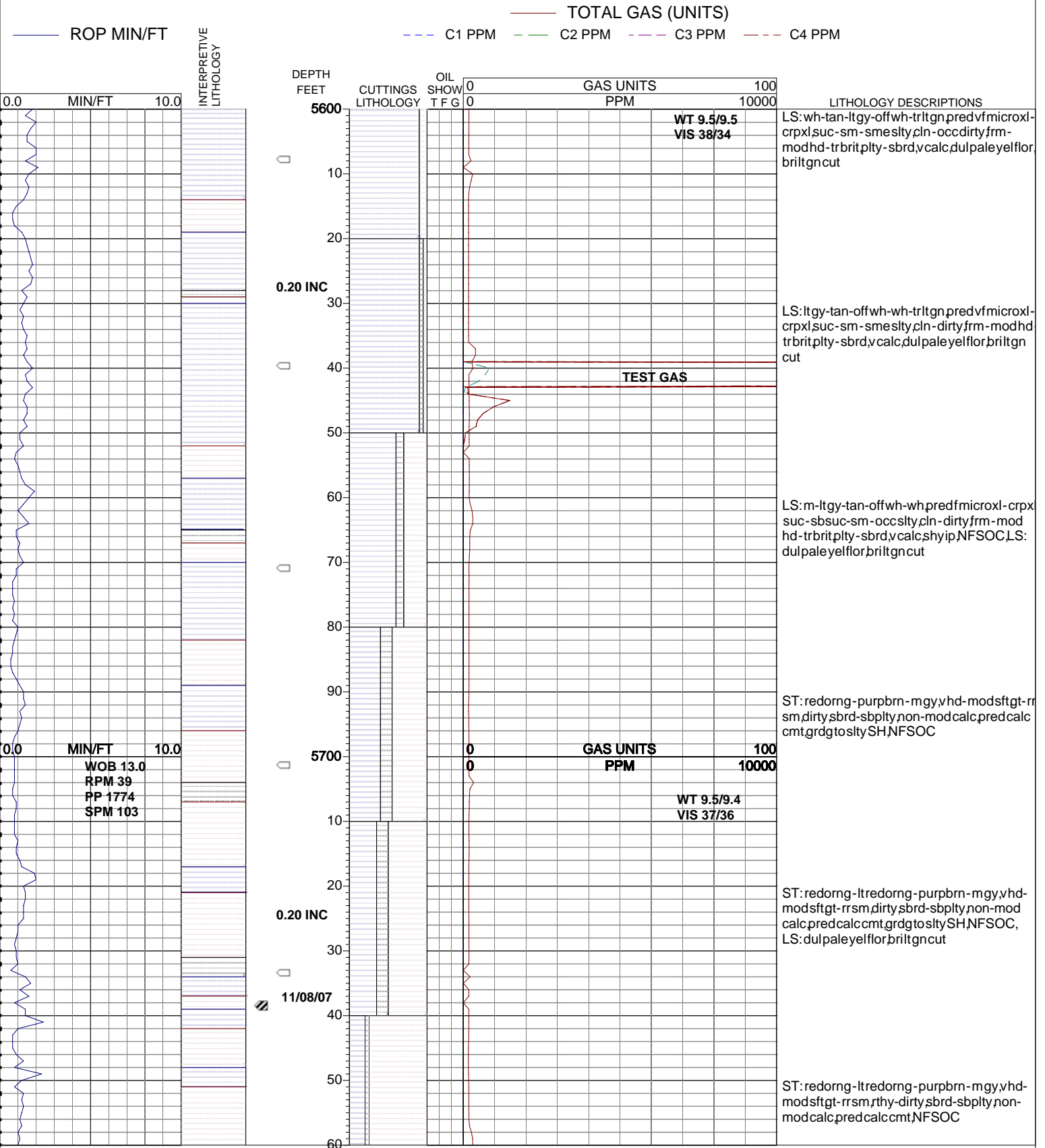


# PASON SYSTEMS USA CORP.

(720) 880-2000

OPERATOR: CPC MINERALS, LLC  
 WELL: CPC 17-1, SIDETRACK  
 PRINT DATE: Mon Feb 18 2008 09:00:50

LOCATION: SEC. 17, T3S, R43E  
 COUNTY: BONNEVILLE  
 STATE: IDAHO

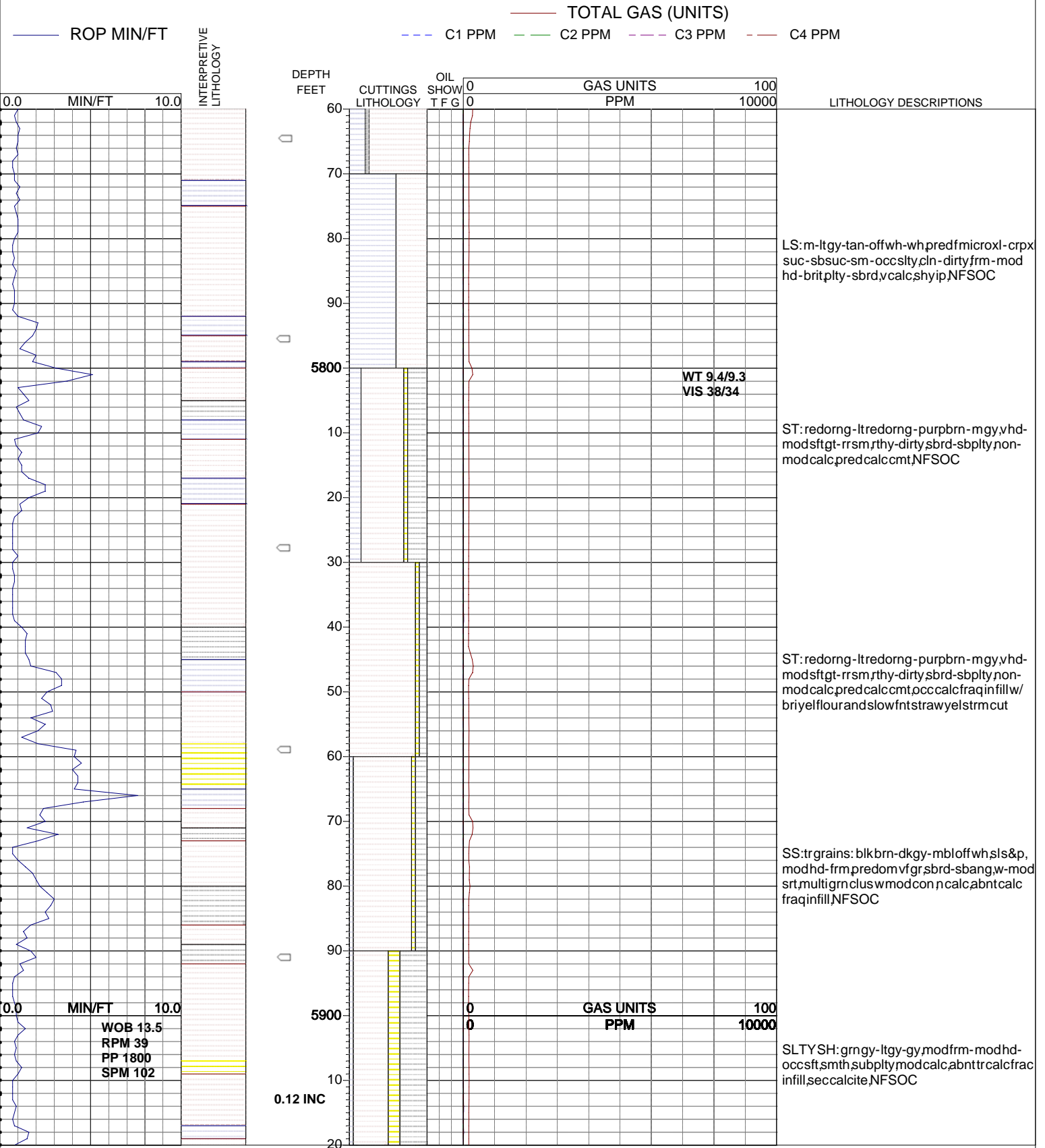


# PASON SYSTEMS USA CORP.

(720) 880-2000

OPERATOR: CPC MINERALS, LLC  
 WELL: CPC 17-1, SIDETRACK  
 PRINT DATE: Mon Feb 18 2008 09:00:50

LOCATION: SEC. 17, T3S, R43E  
 COUNTY: BONNEVILLE  
 STATE: IDAHO

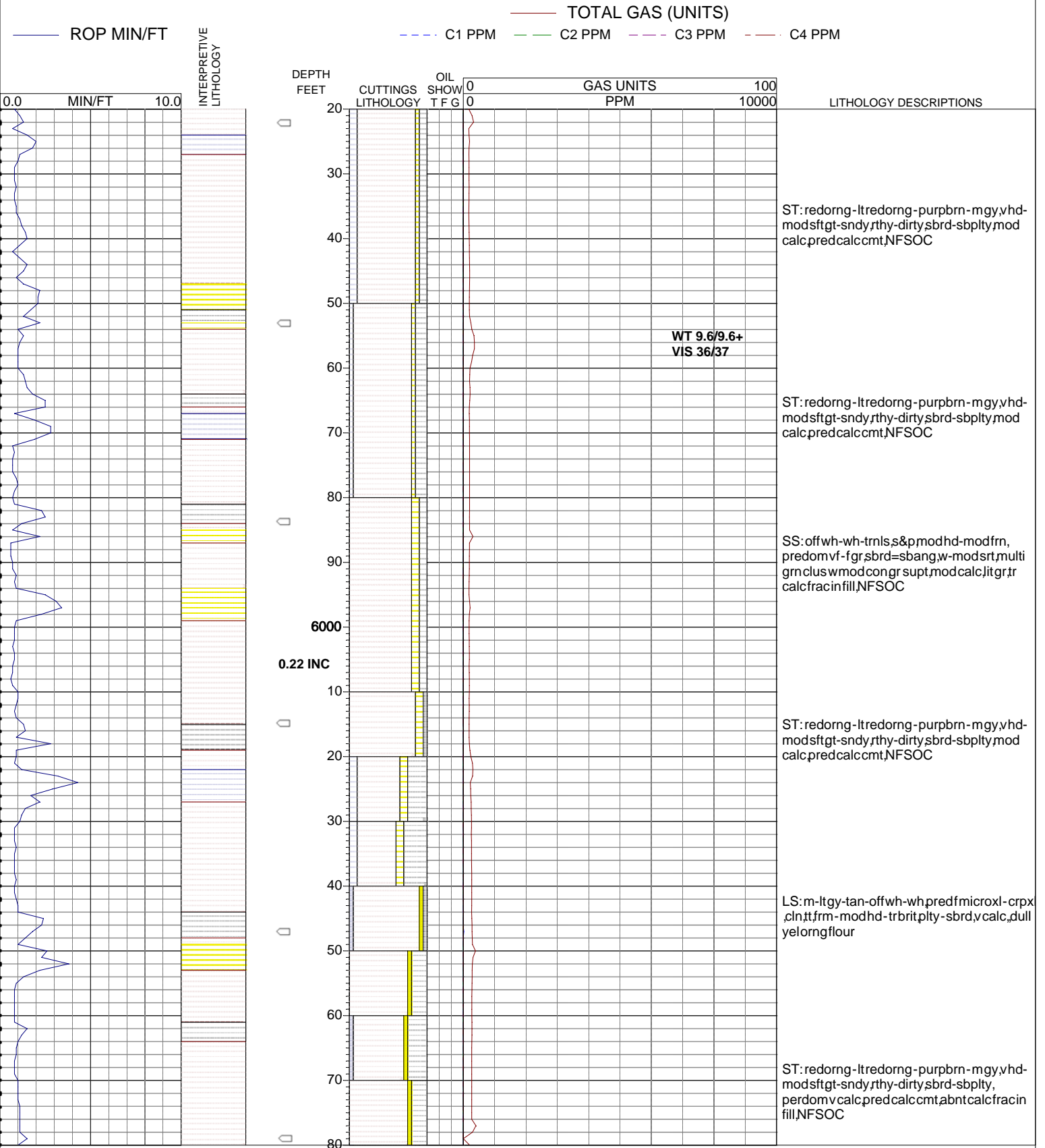


# PASON SYSTEMS USA CORP.

(720) 880-2000

OPERATOR: CPC MINERALS, LLC  
 WELL: CPC 17-1, SIDETRACK  
 PRINT DATE: Mon Feb 18 2008 09:00:50

LOCATION: SEC. 17, T3S, R43E  
 COUNTY: BONNEVILLE  
 STATE: IDAHO

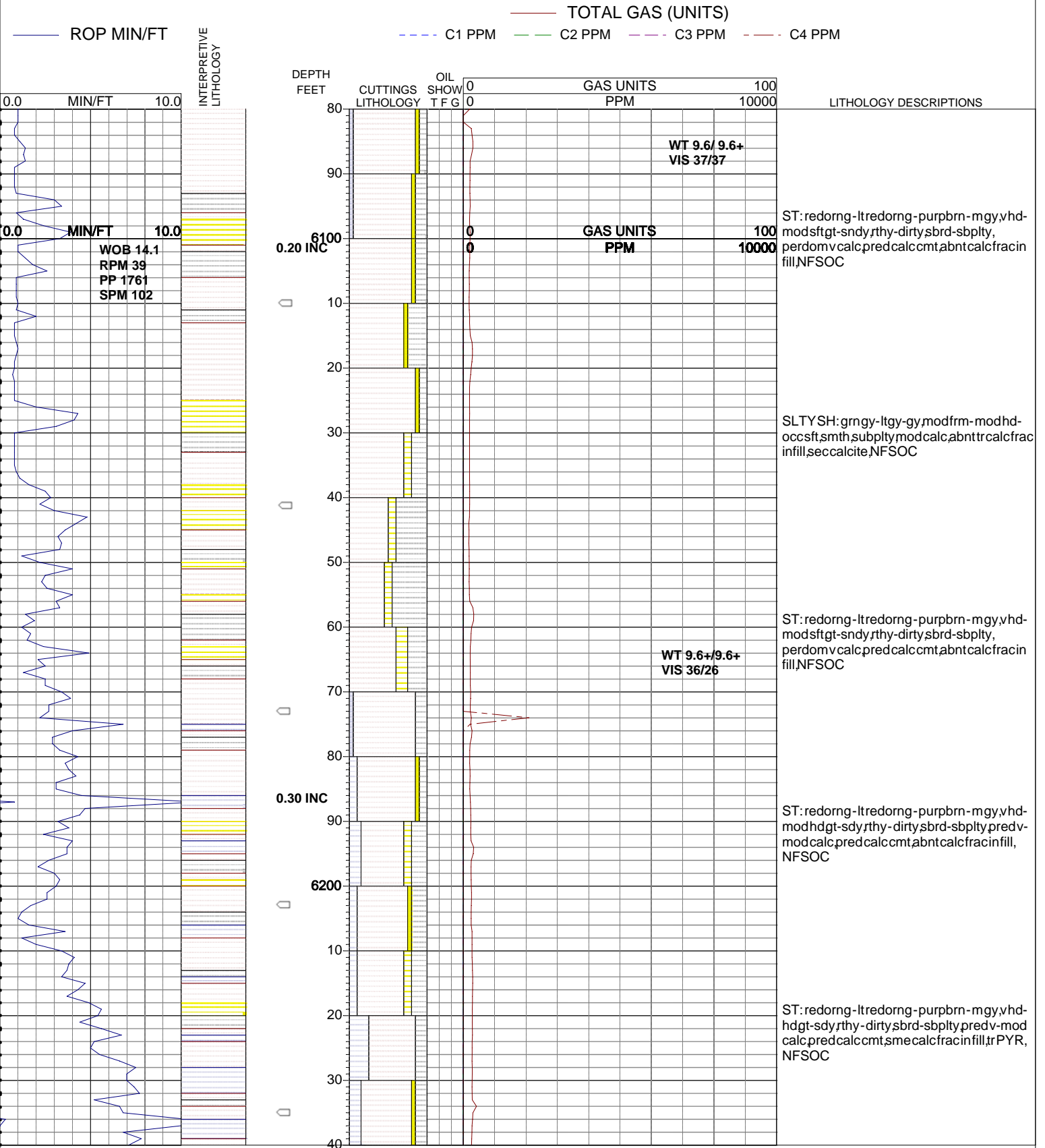


# PASON SYSTEMS USA CORP.

(720) 880-2000

OPERATOR: CPC MINERALS, LLC  
 WELL: CPC 17-1, SIDETRACK  
 PRINT DATE: Mon Feb 18 2008 09:00:50

LOCATION: SEC. 17, T3S, R43E  
 COUNTY: BONNEVILLE  
 STATE: IDAHO

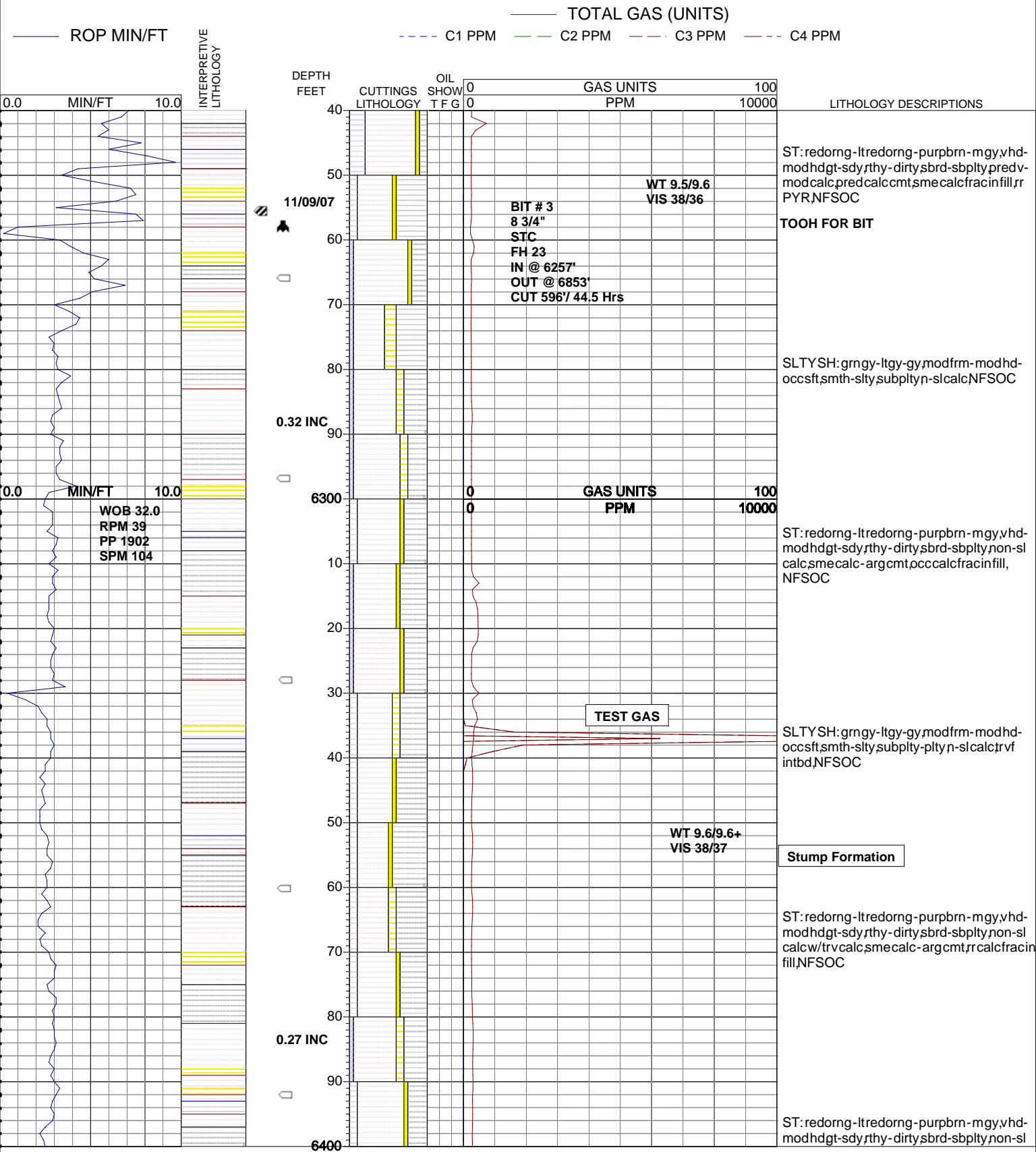


# PASON SYSTEMS USA CORP.

(720) 880-2000

OPERATOR: CPC MINERALS, LLC  
 WELL: CPC 17-1, SIDETRACK  
 PRINT DATE: Mon Feb 18 2008 09:01:00

LOCATION: SEC. 17, T3S, R43E  
 COUNTY: BONNEVILLE  
 STATE: IDAHO

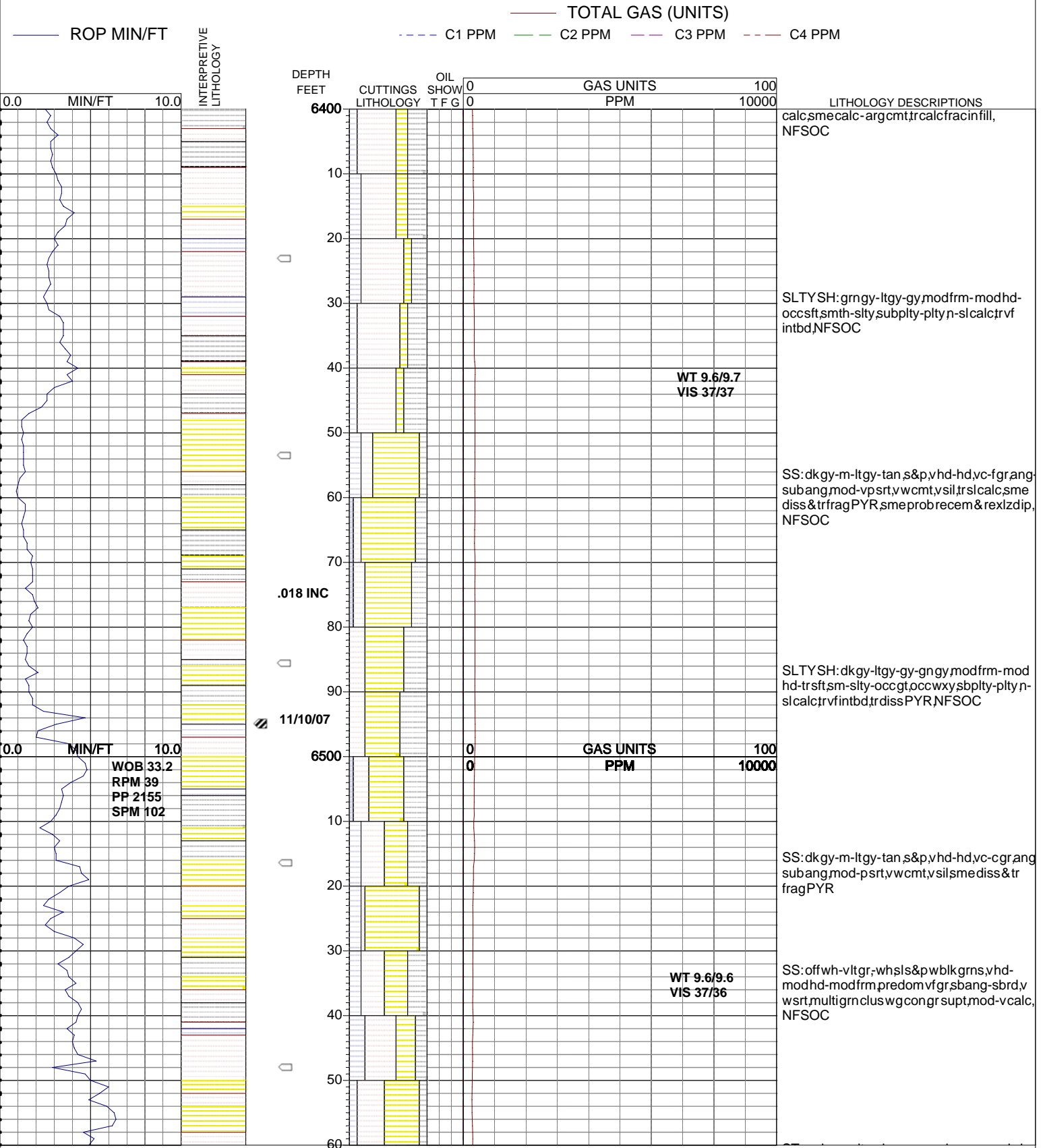


# PASON SYSTEMS USA CORP.

(720) 880-2000

OPERATOR: CPC MINERALS, LLC  
 WELL: CPC 17-1, SIDETRACK  
 PRINT DATE: Mon Feb 18 2008 09:01:00

LOCATION: SEC. 17, T3S, R43E  
 COUNTY: BONNEVILLE  
 STATE: IDAHO

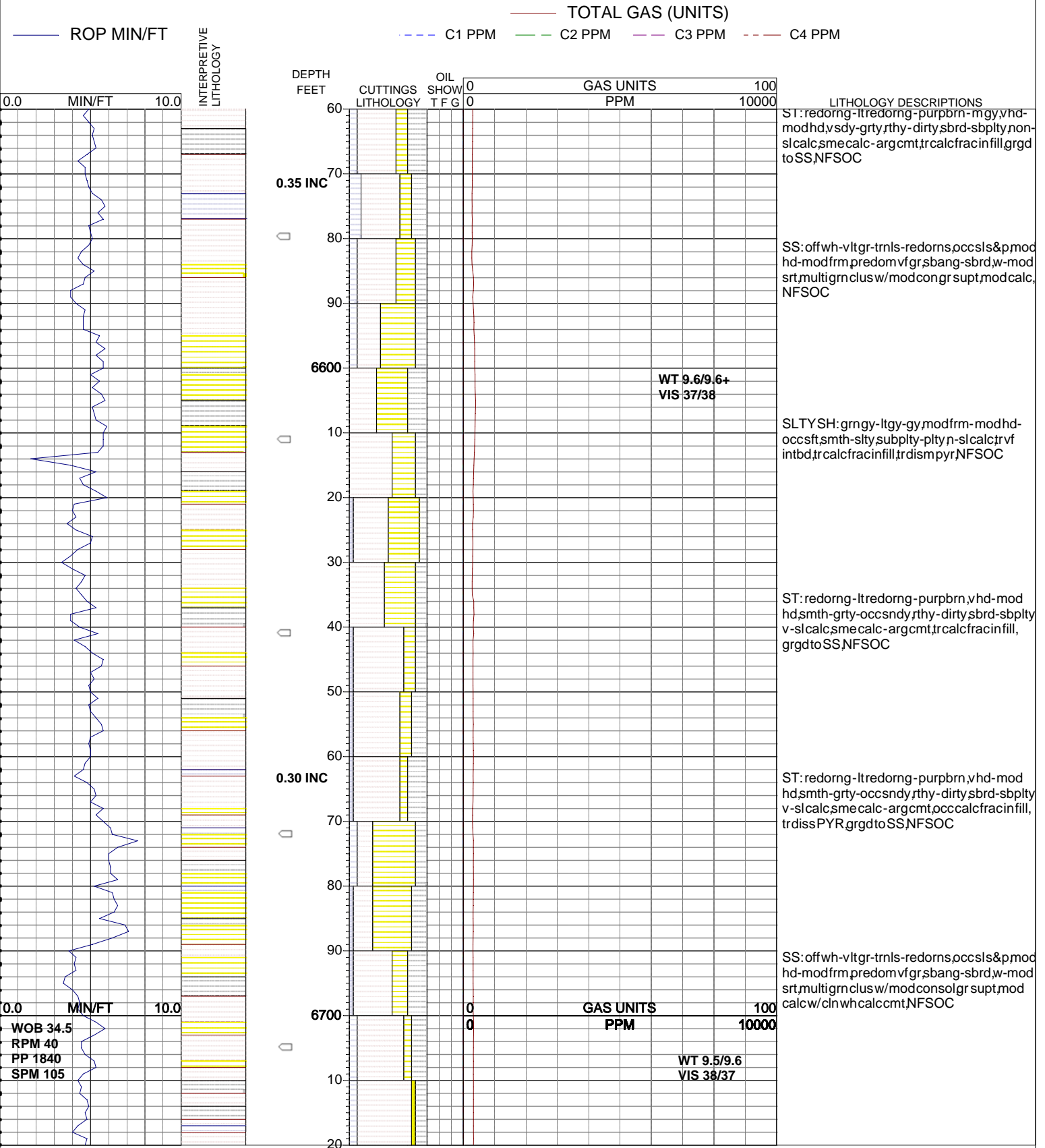


# PASON SYSTEMS USA CORP.

(720) 880-2000

OPERATOR: CPC MINERALS, LLC  
 WELL: CPC 17-1, SIDETRACK  
 PRINT DATE: Mon Feb 18 2008 09:01:00

LOCATION: SEC. 17, T3S, R43E  
 COUNTY: BONNEVILLE  
 STATE: IDAHO

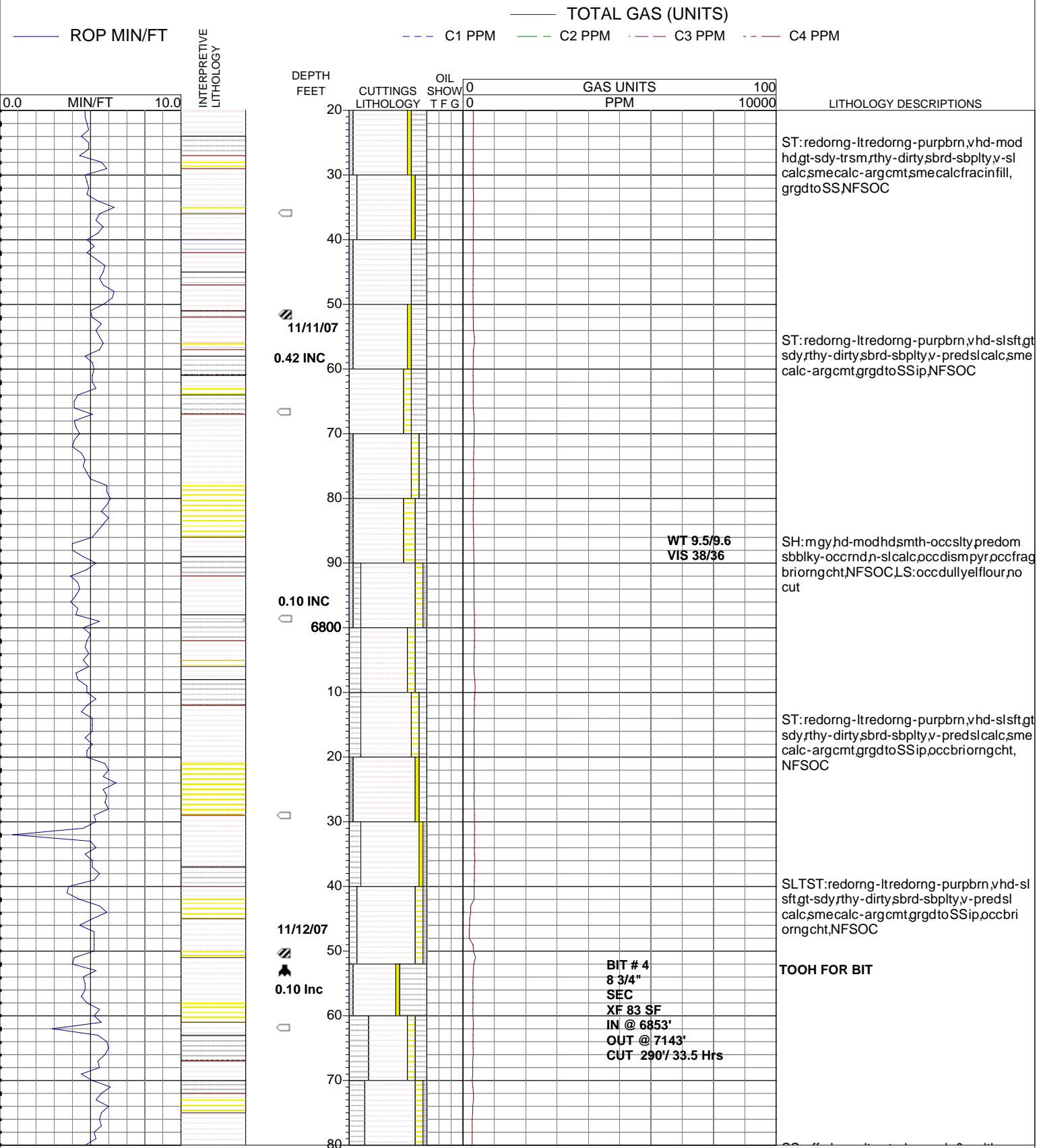


# PASON SYSTEMS USA CORP.

(720) 880-2000

OPERATOR: CPC MINERALS, LLC  
 WELL: CPC 17-1, SIDETRACK  
 PRINT DATE: Mon Feb 18 2008 09:01:00

LOCATION: SEC. 17, T3S, R43E  
 COUNTY: BONNEVILLE  
 STATE: IDAHO



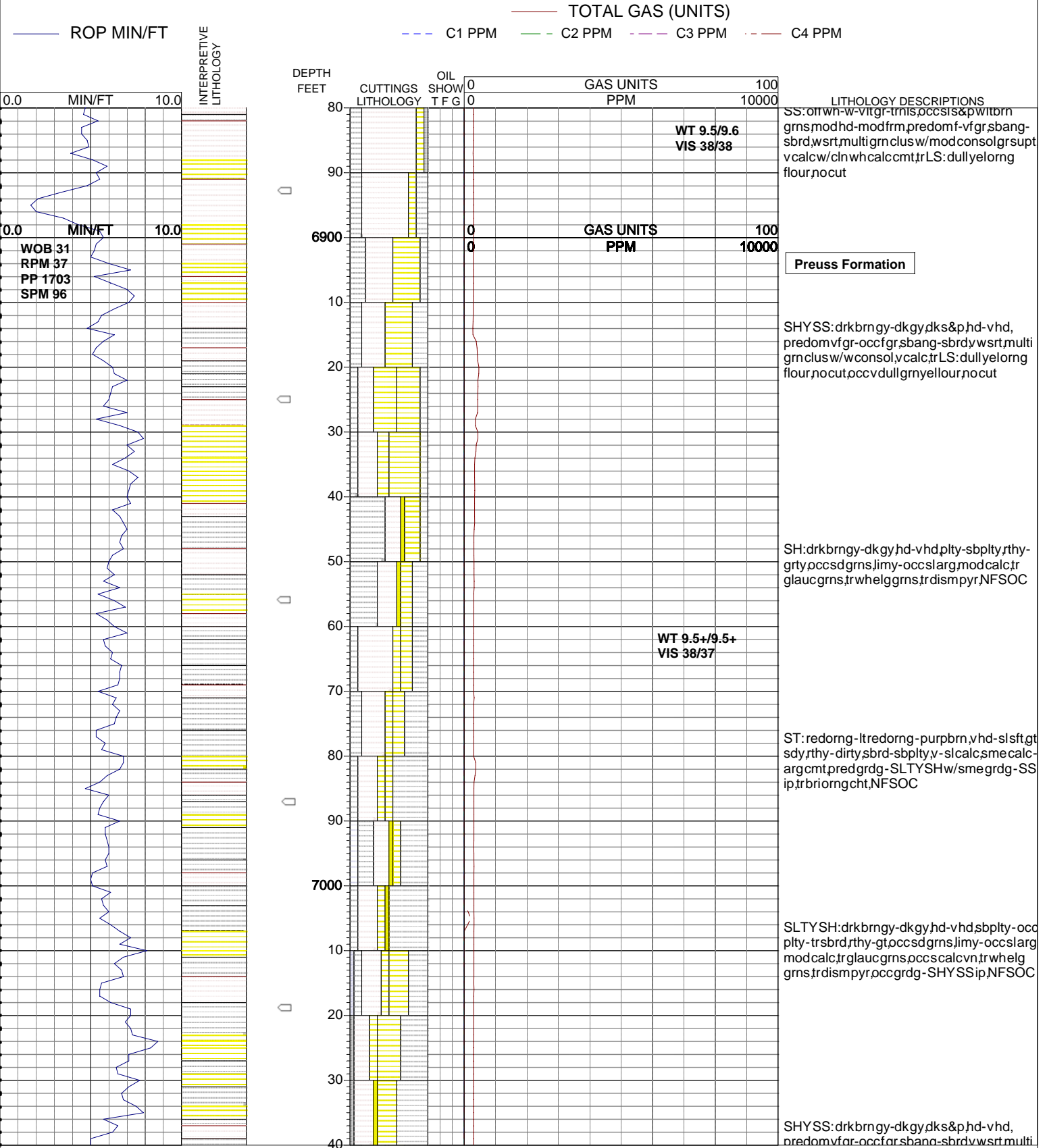


# PASON SYSTEMS USA CORP.

(720) 880-2000

OPERATOR: CPC MINERALS, LLC  
 WELL: CPC 17-1, SIDETRACK  
 PRINT DATE: Mon Feb 18 2008 09:01:10

LOCATION: SEC. 17, T3S, R43E  
 COUNTY: BONNEVILLE  
 STATE: IDAHO

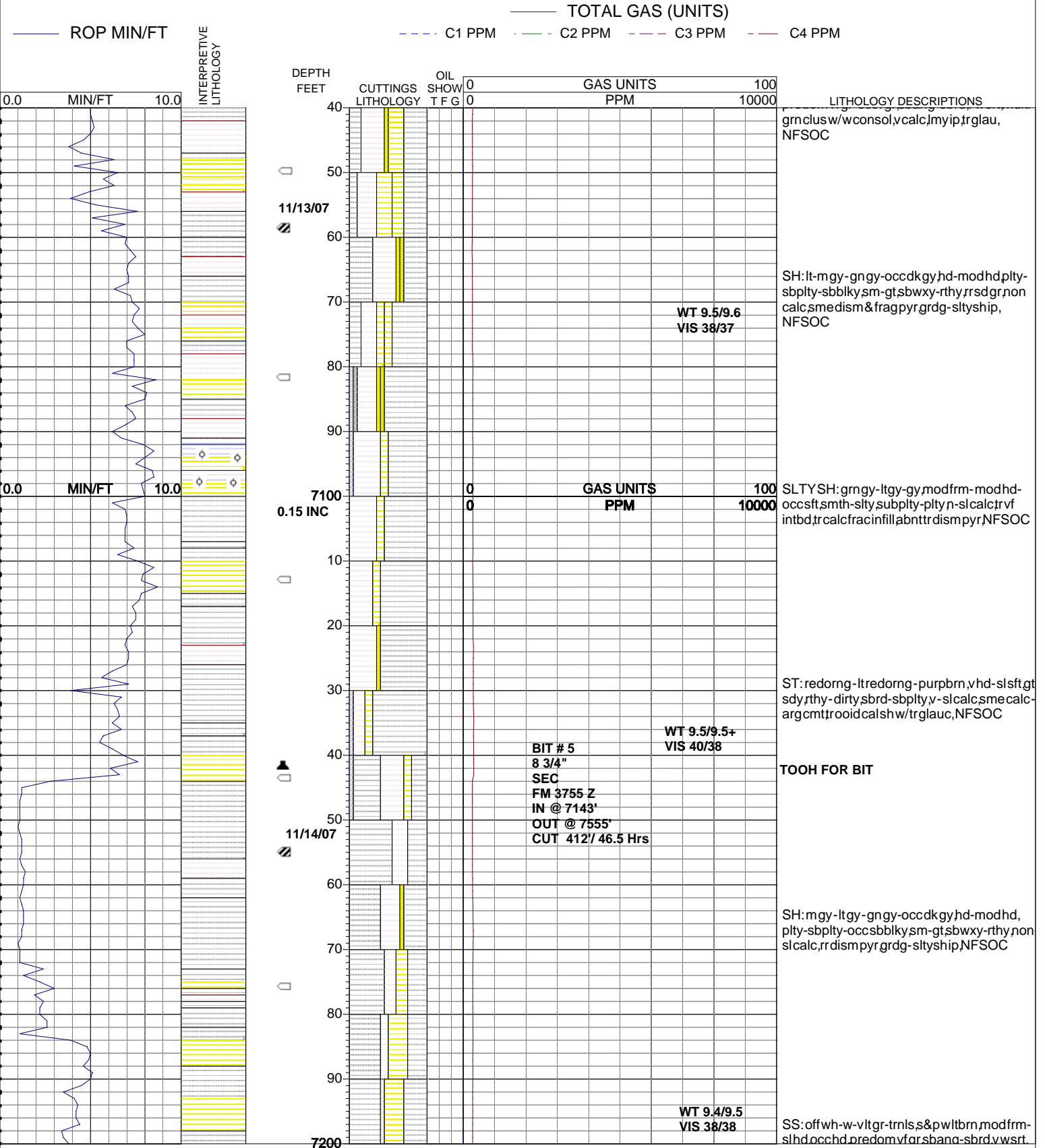


# PASON SYSTEMS USA CORP.

(720) 880-2000

OPERATOR: CPC MINERALS, LLC  
 WELL: CPC 17-1, SIDETRACK  
 PRINT DATE: Mon Feb 18 2008 09:01:10

LOCATION: SEC. 17, T3S, R43E  
 COUNTY: BONNEVILLE  
 STATE: IDAHO

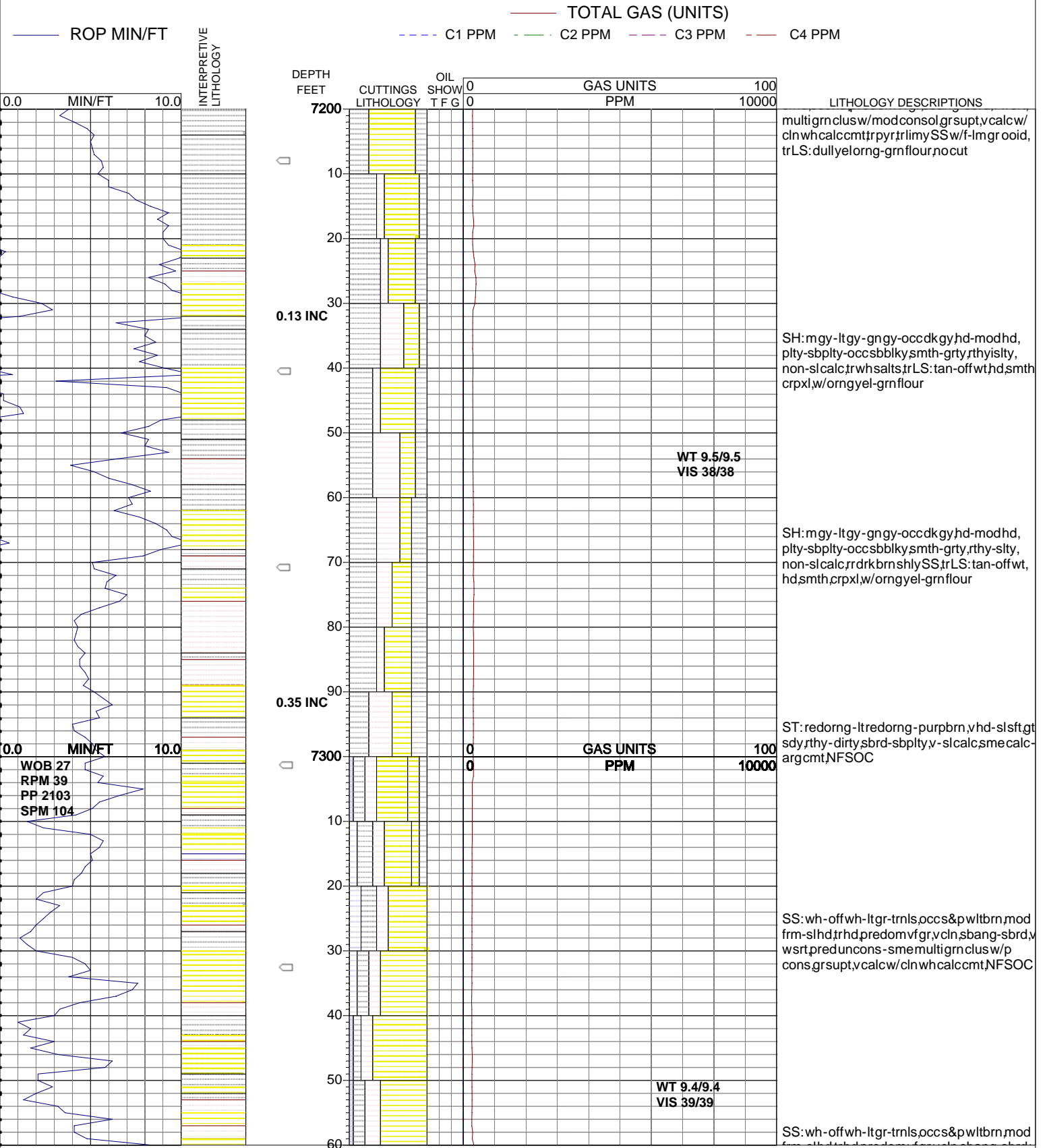


# PASON SYSTEMS USA CORP.

(720) 880-2000

OPERATOR: CPC MINERALS, LLC  
 WELL: CPC 17-1, SIDETRACK  
 PRINT DATE: Mon Feb 18 2008 09:01:10

LOCATION: SEC. 17, T3S, R43E  
 COUNTY: BONNEVILLE  
 STATE: IDAHO



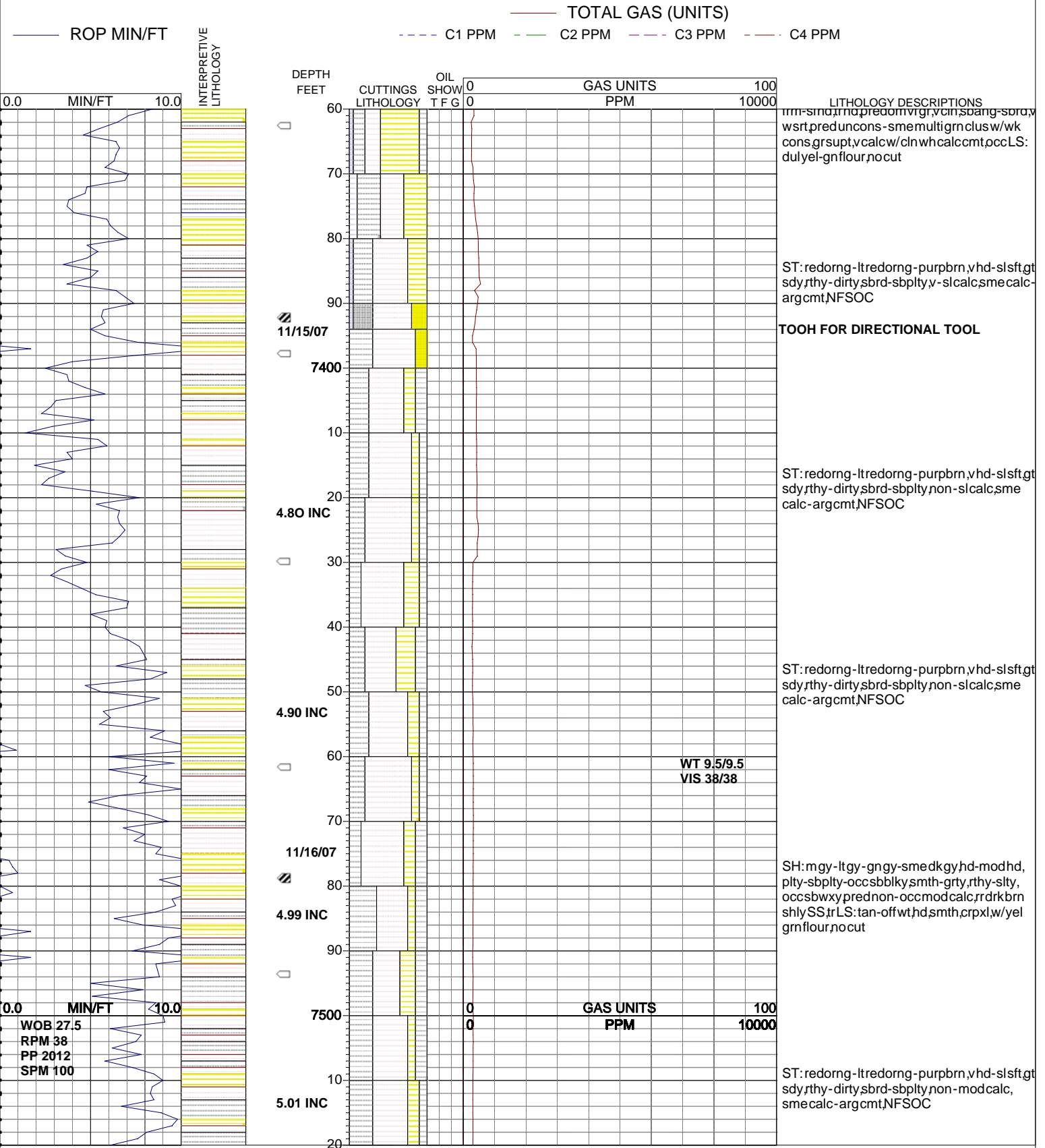
WOB 27  
 RPM 39  
 PP 2103  
 SPM 104

# PASON SYSTEMS USA CORP.

(720) 880-2000

OPERATOR: CPC MINERALS, LLC  
 WELL: CPC 17-1, SIDETRACK  
 PRINT DATE: Mon Feb 18 2008 09:01:10

LOCATION: SEC. 17, T3S, R43E  
 COUNTY: BONNEVILLE  
 STATE: IDAHO



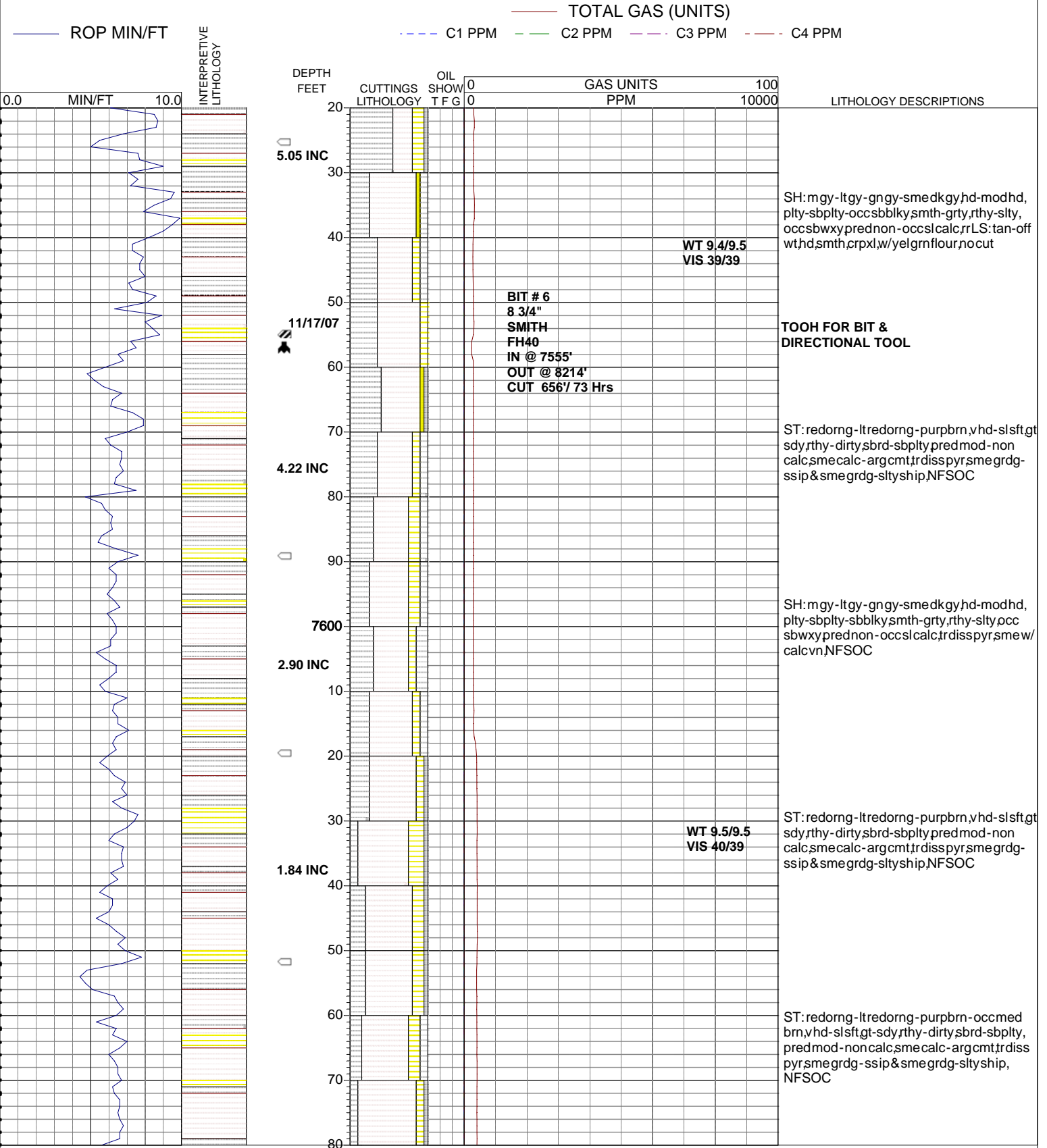
WOB 27.5  
 RPM 38  
 PP 2012  
 SPM 100

# PASON SYSTEMS USA CORP.

(720) 880-2000

OPERATOR: CPC MINERALS, LLC  
 WELL: CPC 17-1, SIDETRACK  
 PRINT DATE: Mon Feb 18 2008 09:01:20

LOCATION: SEC. 17, T3S, R43E  
 COUNTY: BONNEVILLE  
 STATE: IDAHO

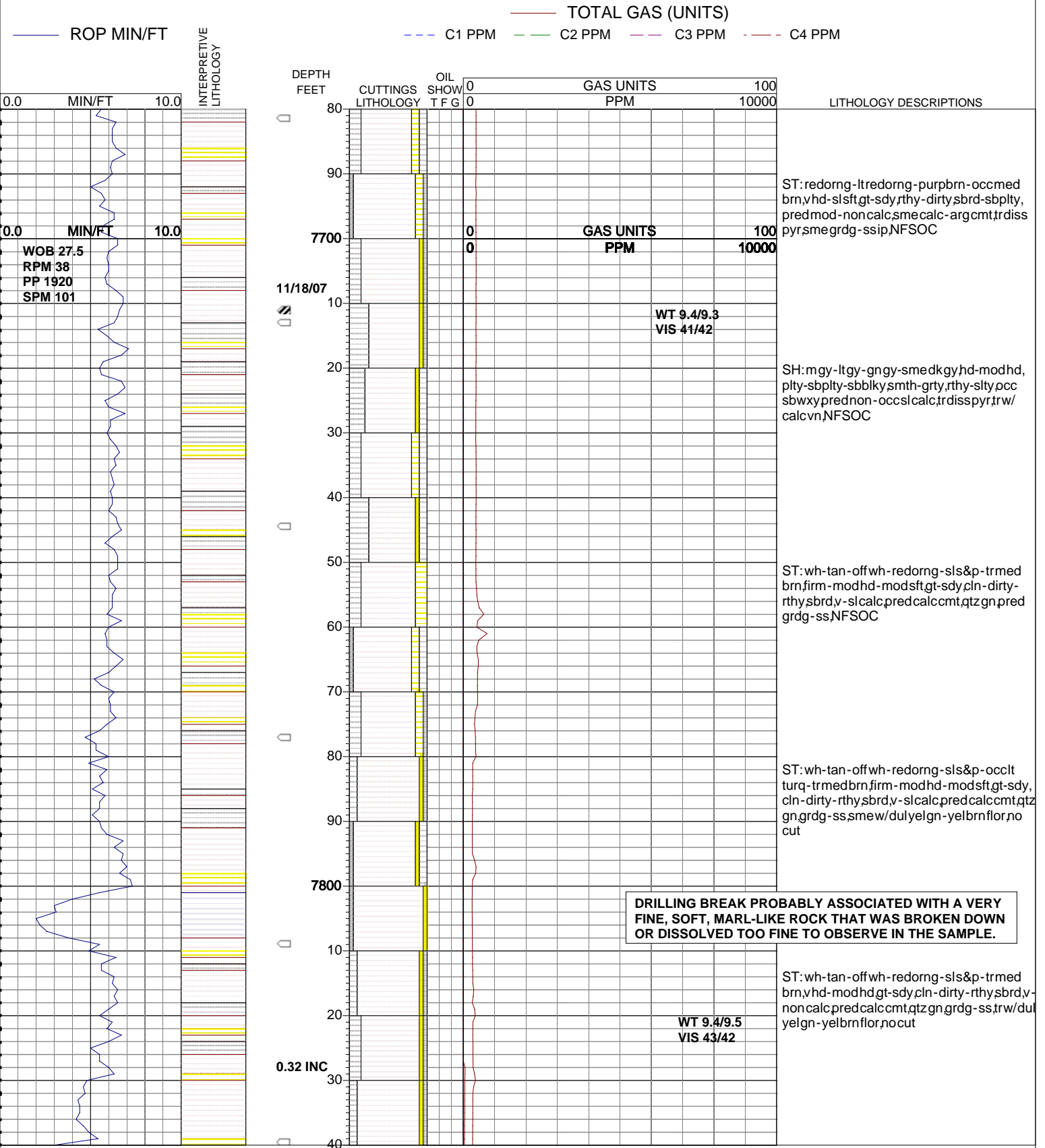


# PASON SYSTEMS USA CORP.

(720) 880-2000

OPERATOR: CPC MINERALS, LLC  
 WELL: CPC 17-1, SIDETRACK  
 PRINT DATE: Mon Feb 18 2008 09:01:20

LOCATION: SEC. 17, T3S, R43E  
 COUNTY: BONNEVILLE  
 STATE: IDAHO

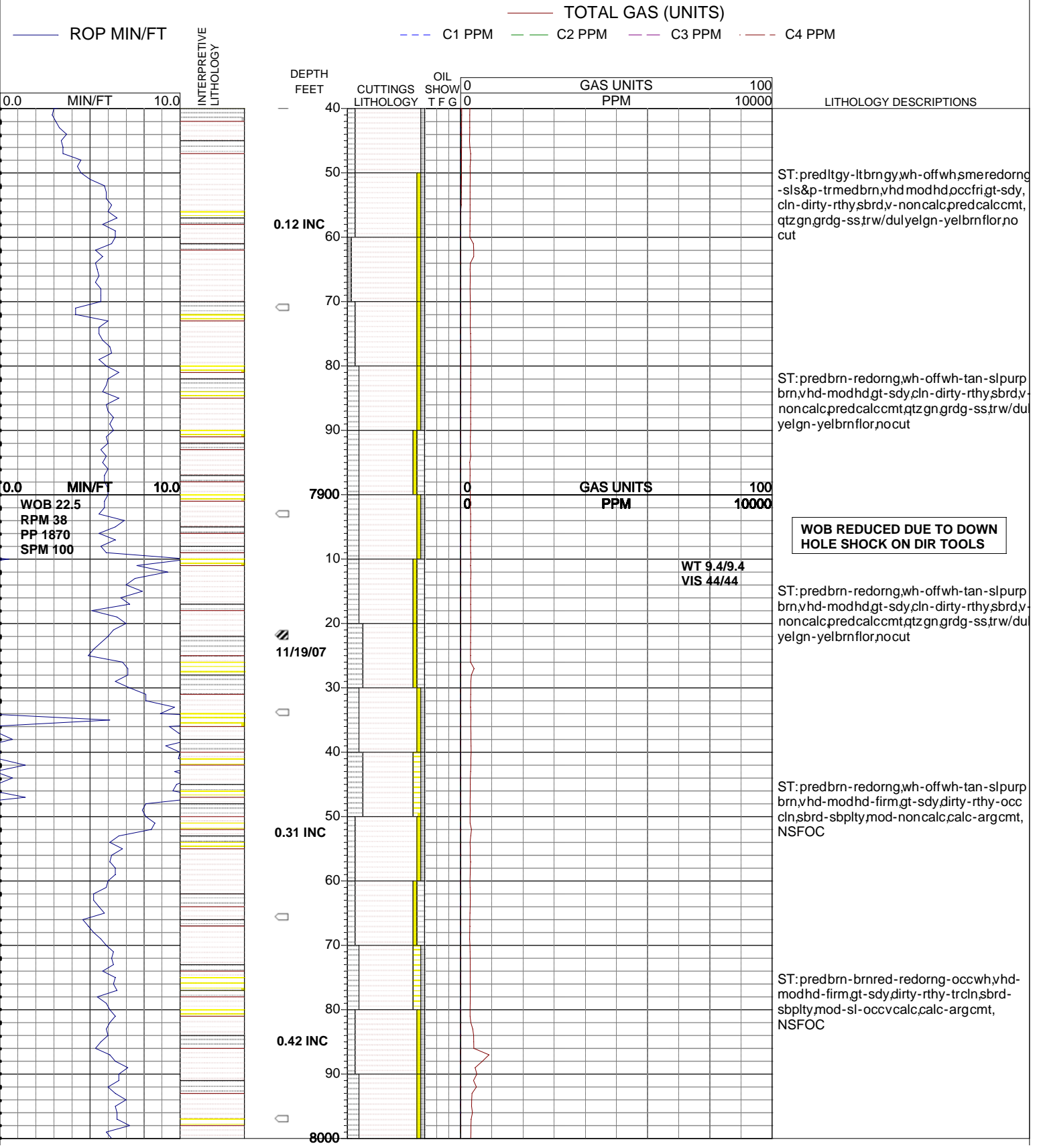


# PASON SYSTEMS USA CORP.

(720) 880-2000

OPERATOR: CPC MINERALS, LLC  
 WELL: CPC 17-1, SIDETRACK  
 PRINT DATE: Mon Feb 18 2008 09:01:20

LOCATION: SEC. 17, T3S, R43E  
 COUNTY: BONNEVILLE  
 STATE: IDAHO

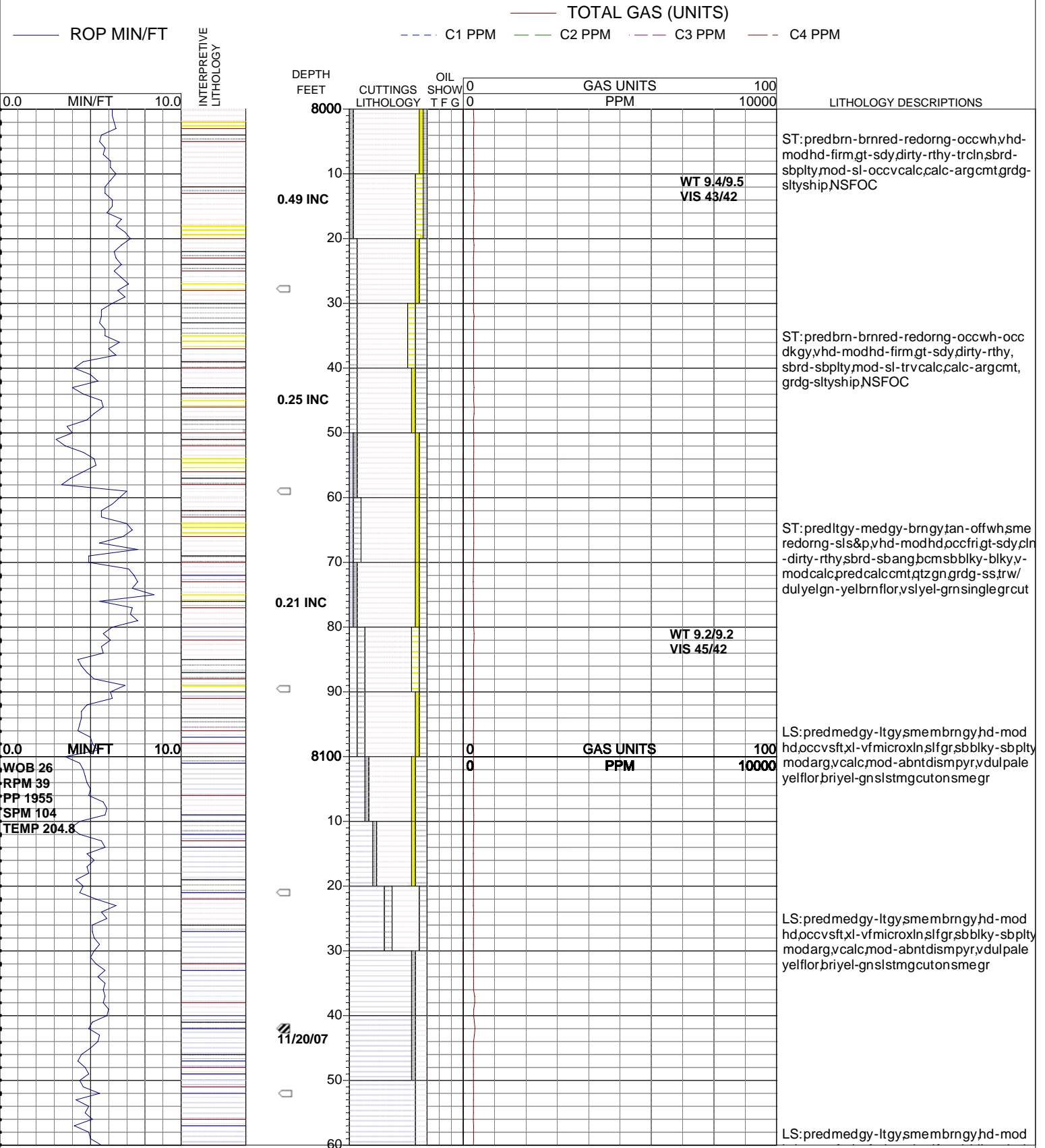


# PASON SYSTEMS USA CORP.

(720) 880-2000

OPERATOR: CPC MINERALS, LLC  
 WELL: CPC 17-1, SIDETRACK  
 PRINT DATE: Mon Feb 18 2008 09:01:20

LOCATION: SEC. 17, T3S, R43E  
 COUNTY: BONNEVILLE  
 STATE: IDAHO



WOB 26  
 RPM 39  
 PP 1955  
 SPM 104  
 TEMP 204.8

11/20/07

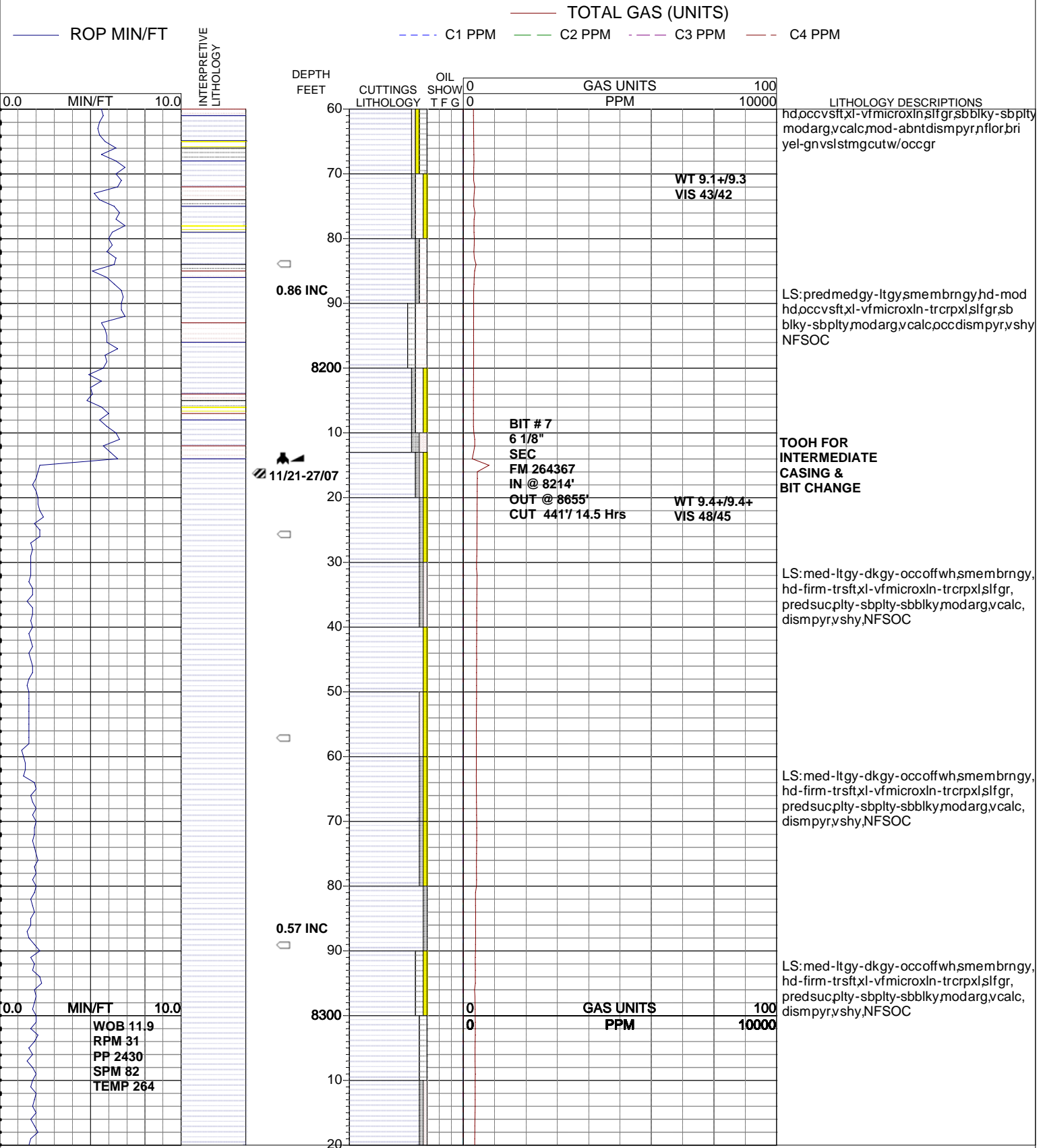


# PASON SYSTEMS USA CORP.

(720) 880-2000

OPERATOR: CPC MINERALS, LLC  
 WELL: CPC 17-1, SIDETRACK  
 PRINT DATE: Mon Feb 18 2008 09:01:30

LOCATION: SEC. 17, T3S, R43E  
 COUNTY: BONNEVILLE  
 STATE: IDAHO

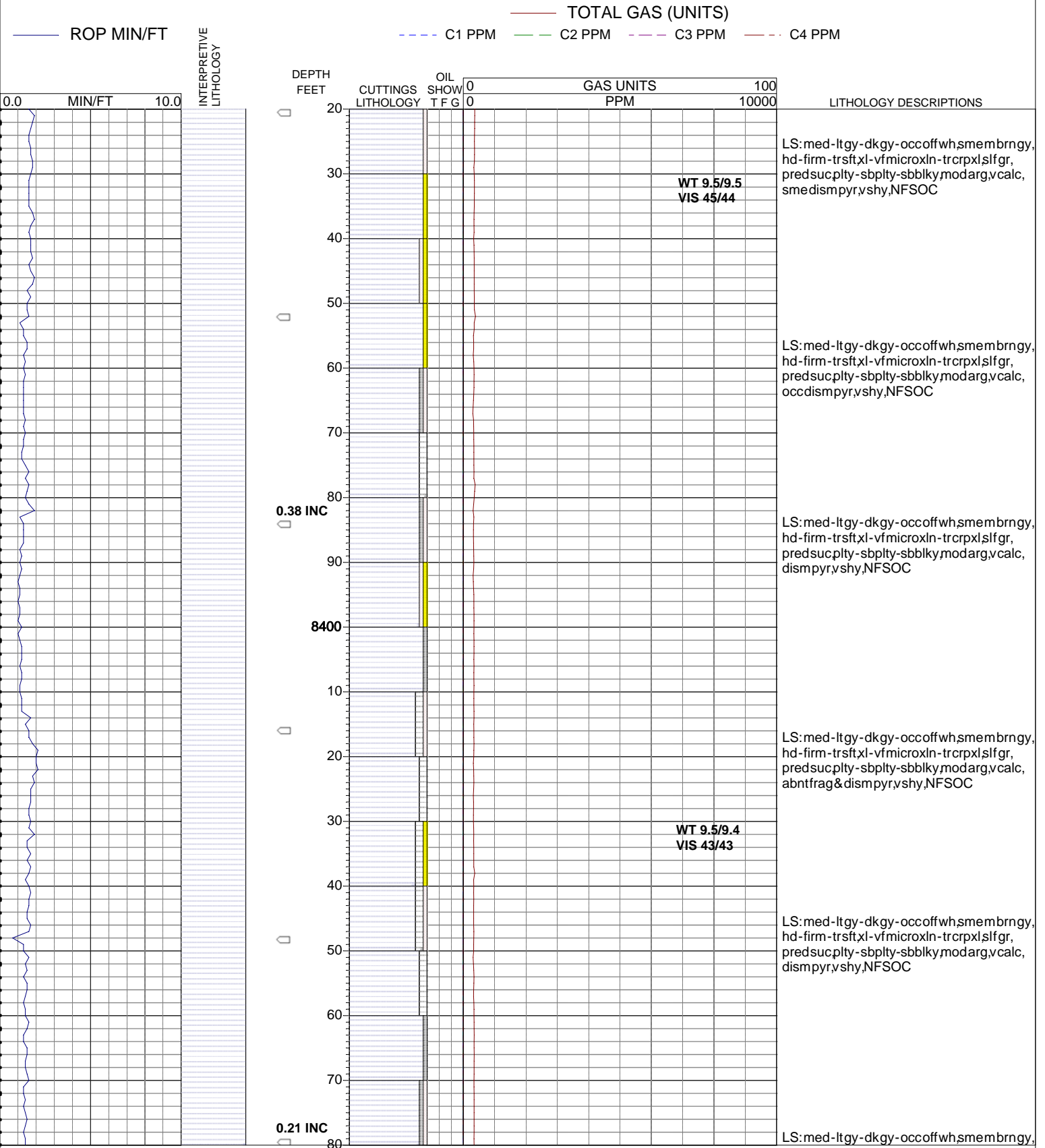


# PASON SYSTEMS USA CORP.

(720) 880-2000

OPERATOR: CPC MINERALS, LLC  
 WELL: CPC 17-1, SIDETRACK  
 PRINT DATE: Mon Feb 18 2008 09:01:30

LOCATION: SEC. 17, T3S, R43E  
 COUNTY: BONNEVILLE  
 STATE: IDAHO



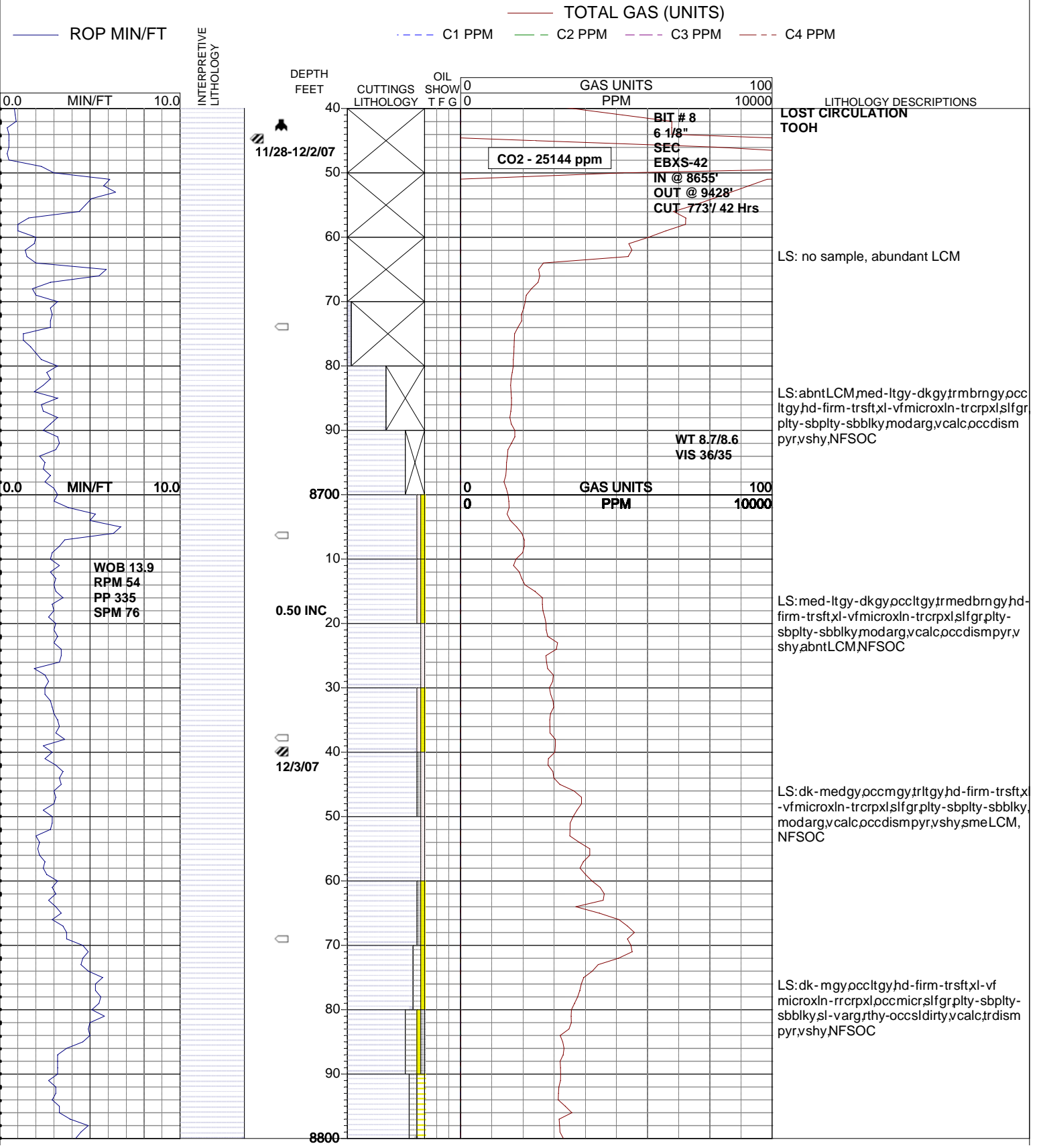


# PASON SYSTEMS USA CORP.

(720) 880-2000

OPERATOR: CPC MINERALS, LLC  
 WELL: CPC 17-1, SIDETRACK  
 PRINT DATE: Mon Feb 18 2008 09:01:30

LOCATION: SEC. 17, T3S, R43E  
 COUNTY: BONNEVILLE  
 STATE: IDAHO

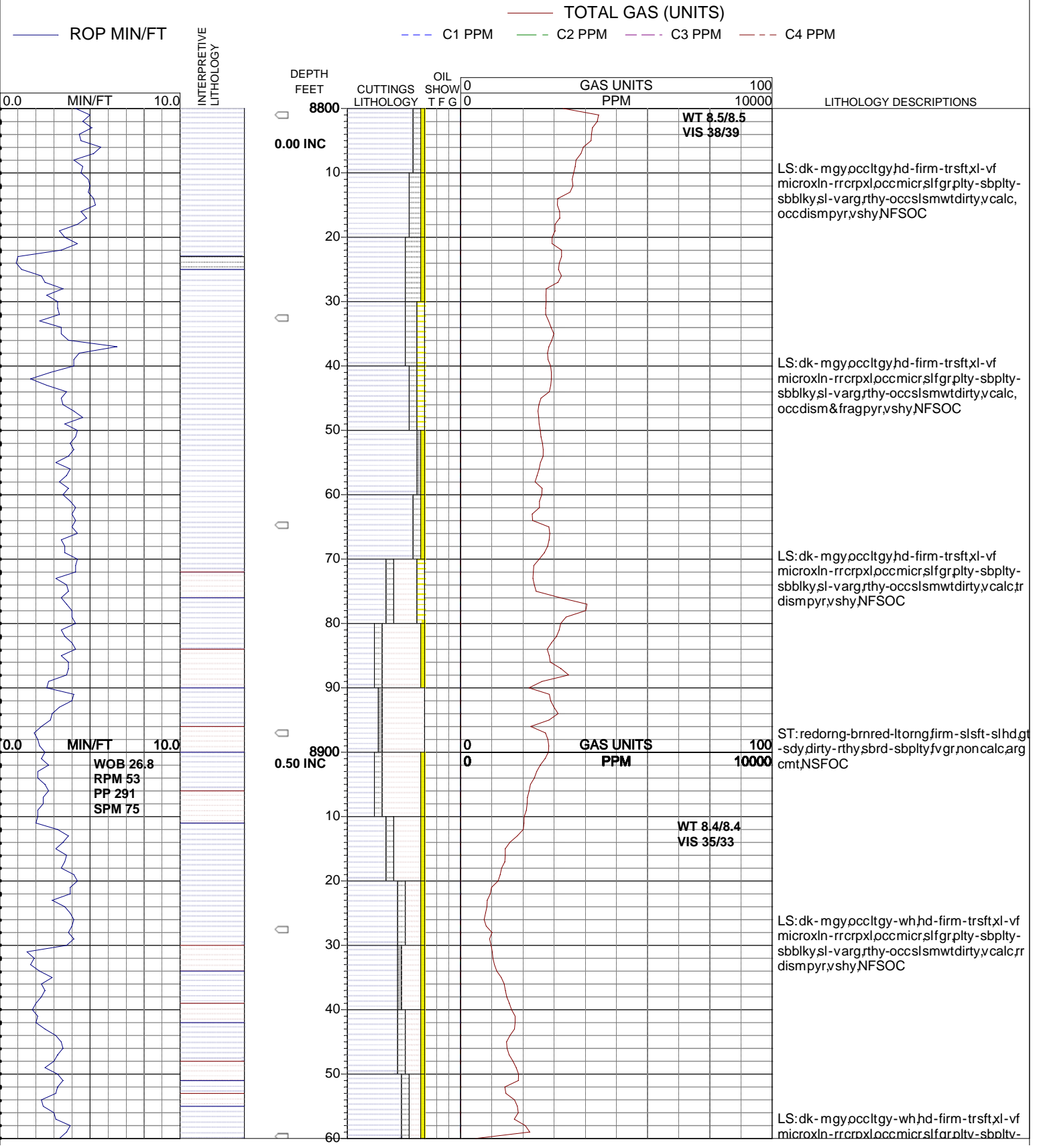


# PASON SYSTEMS USA CORP.

(720) 880-2000

OPERATOR: CPC MINERALS, LLC  
 WELL: CPC 17-1, SIDETRACK  
 PRINT DATE: Mon Feb 18 2008 09:01:30

LOCATION: SEC. 17, T3S, R43E  
 COUNTY: BONNEVILLE  
 STATE: IDAHO

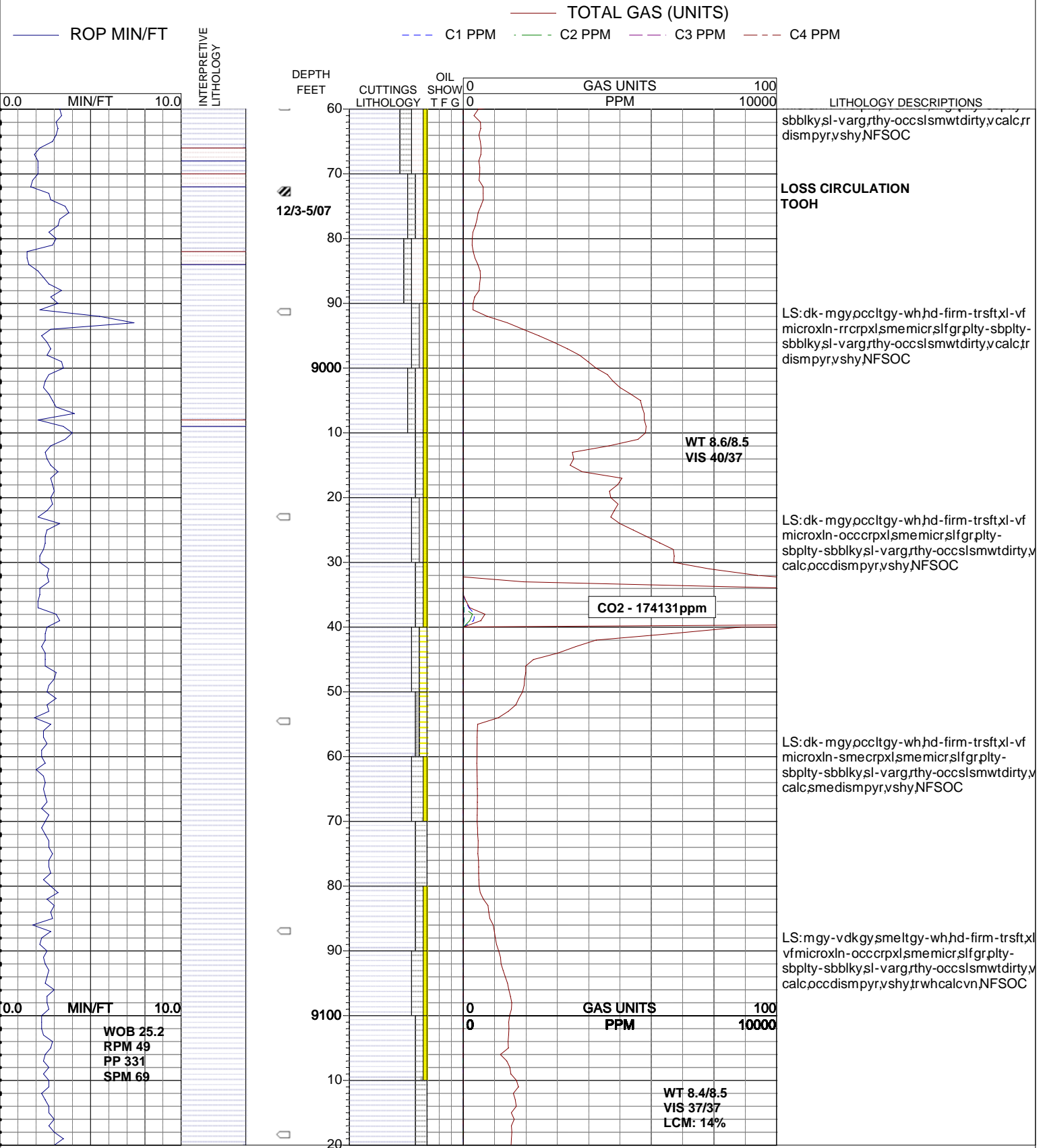


# PASON SYSTEMS USA CORP.

(720) 880-2000

OPERATOR: CPC MINERALS, LLC  
 WELL: CPC 17-1, SIDETRACK  
 PRINT DATE: Mon Feb 18 2008 09:01:40

LOCATION: SEC. 17, T3S, R43E  
 COUNTY: BONNEVILLE  
 STATE: IDAHO



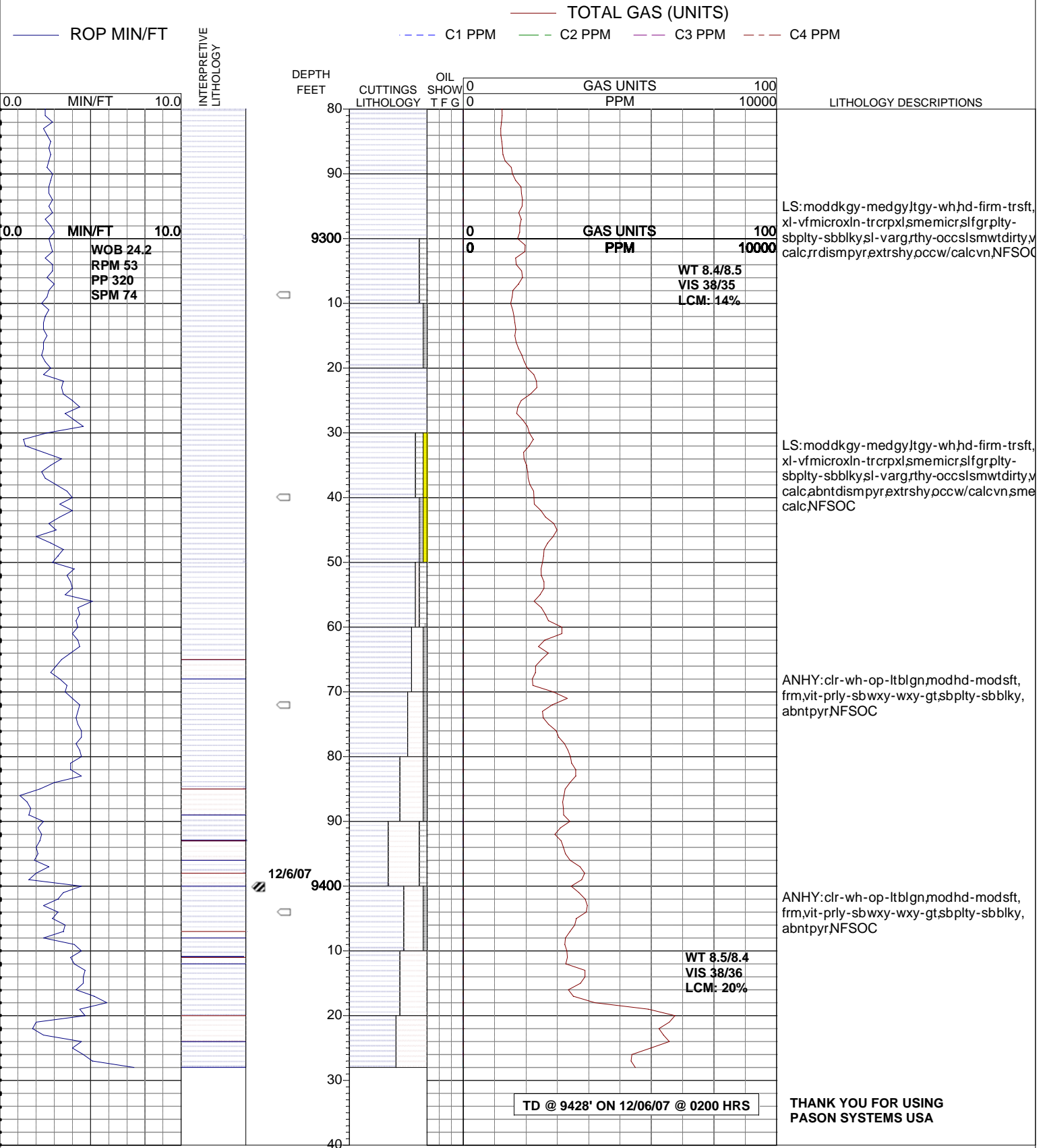


# PASON SYSTEMS USA CORP.

(720) 880-2000

OPERATOR: CPC MINERALS, LLC  
 WELL: CPC 17-1, SIDETRACK  
 PRINT DATE: Mon Feb 18 2008 09:01:40

LOCATION: SEC. 17, T3S, R43E  
 COUNTY: BONNEVILLE  
 STATE: IDAHO



THANK YOU FOR USING PASON SYSTEMS USA