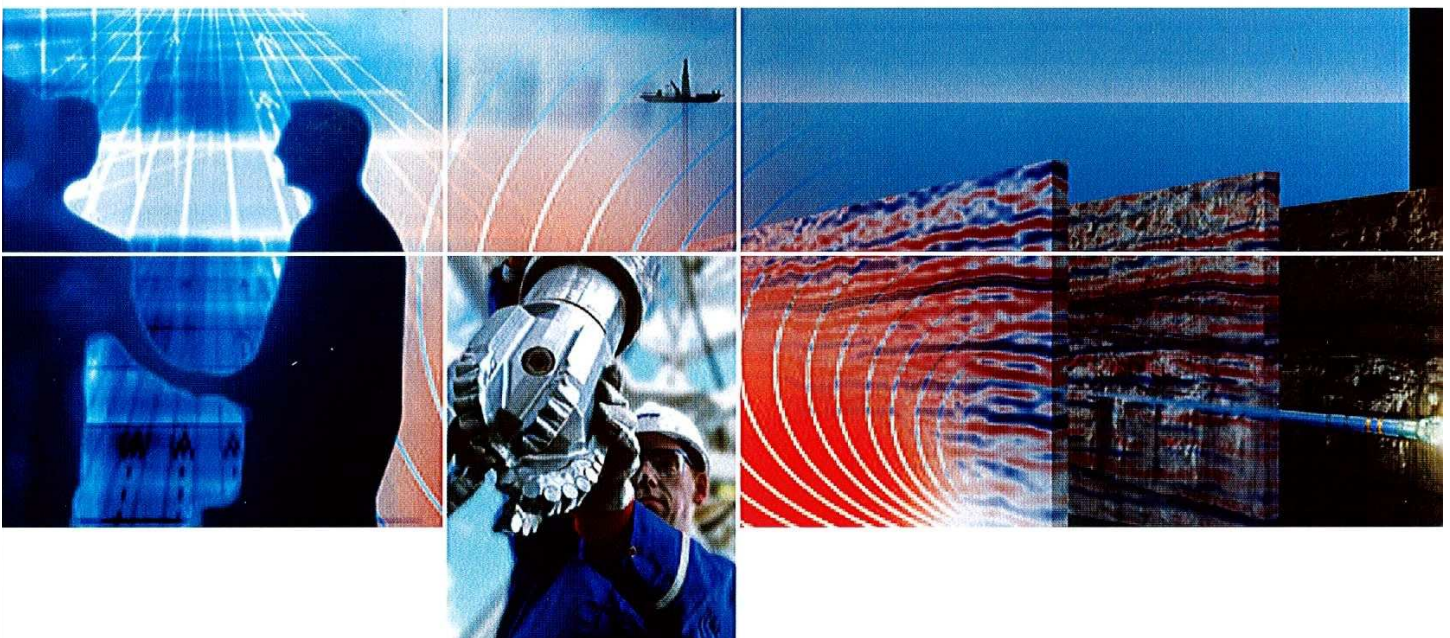


**Schlumberger**

**New Tech Engineering  
CPC 17-1 ST01  
S17 T3S R43E  
Bonneville Co., ID  
Cyclone 20**

**End of Well Report | Drilling & Measurements**



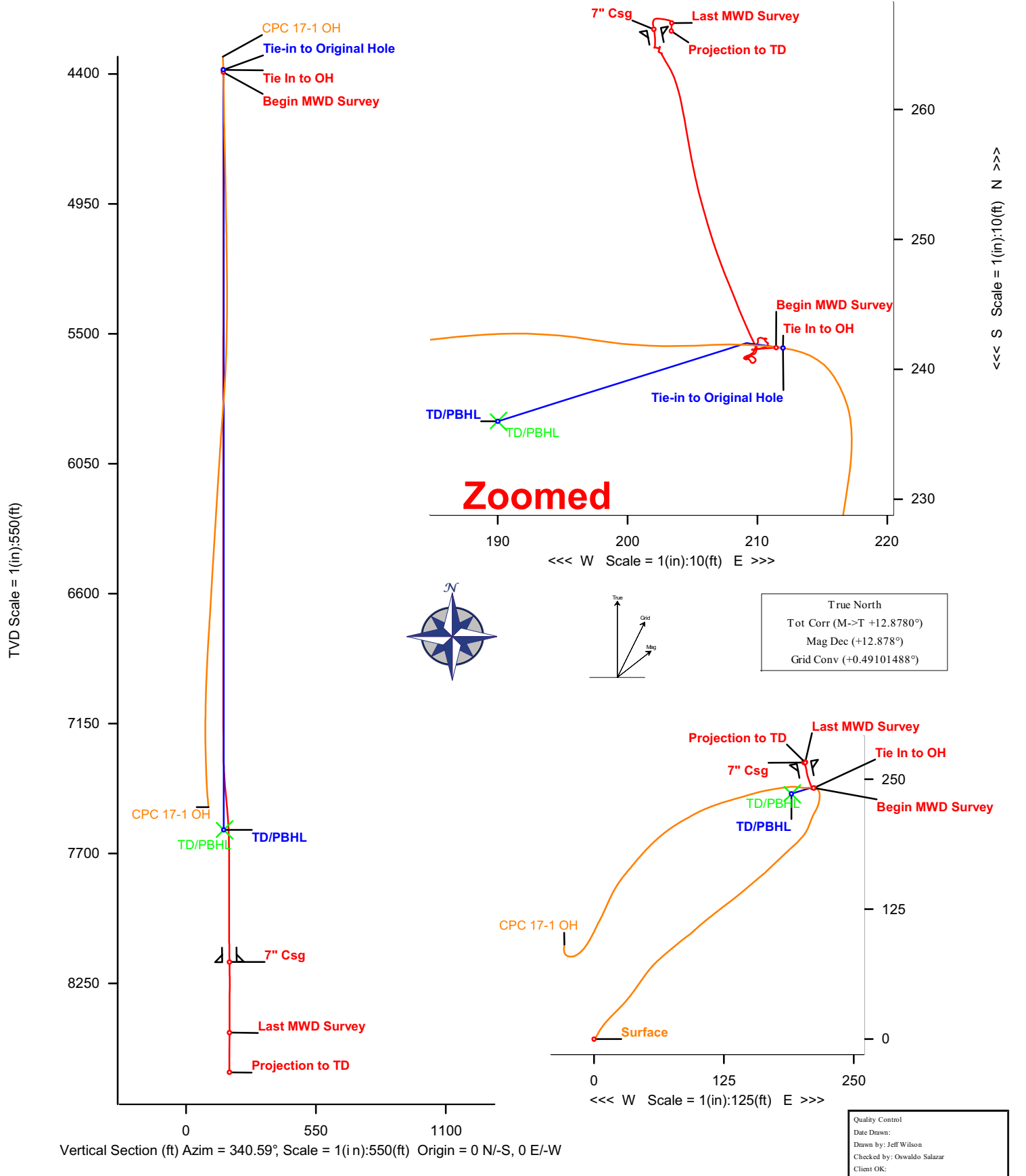
**New Tech Engineering  
CPC 17-1 ST01  
S17 T3S R43E  
Bonneville Co., ID  
Cyclone 20**

# Directional Drilling Services End of Well Report

## Table of Contents

	Section
Directional Surveys & Plots	1
Performance Charts	2
Daily Reports	3
BHA Reports	4
Slide Sheets	5

WELL <b>CPC 17-1</b>	FIELD <b>Bonneville, ID</b>	STRUCTURE <b>17-3S-43E</b>
Magnetic Parameters Model: BGGM 2007 Dip: 68.133° Mag Dec: +12.878° Date: December 03, 2007 FS: 54070.3 nT	Surface Location Lat: N43 9 27.443 Lon: W111 26 55.813 NAD83 Idaho State Planes, Eastern Zone, US Feet Northing: 544155.10 IUS Easting: 847700.77 IUS Grid Conv: +0.49101488° Scale Fact: 0.9999892791	Miscellaneous Slot: 17-3S-43E (CPC 17-1) Plant: CPC 17-1 ST01 TVD Ref: RKB (6435.00 ft above MSL) Srvy Date: December 03, 2007

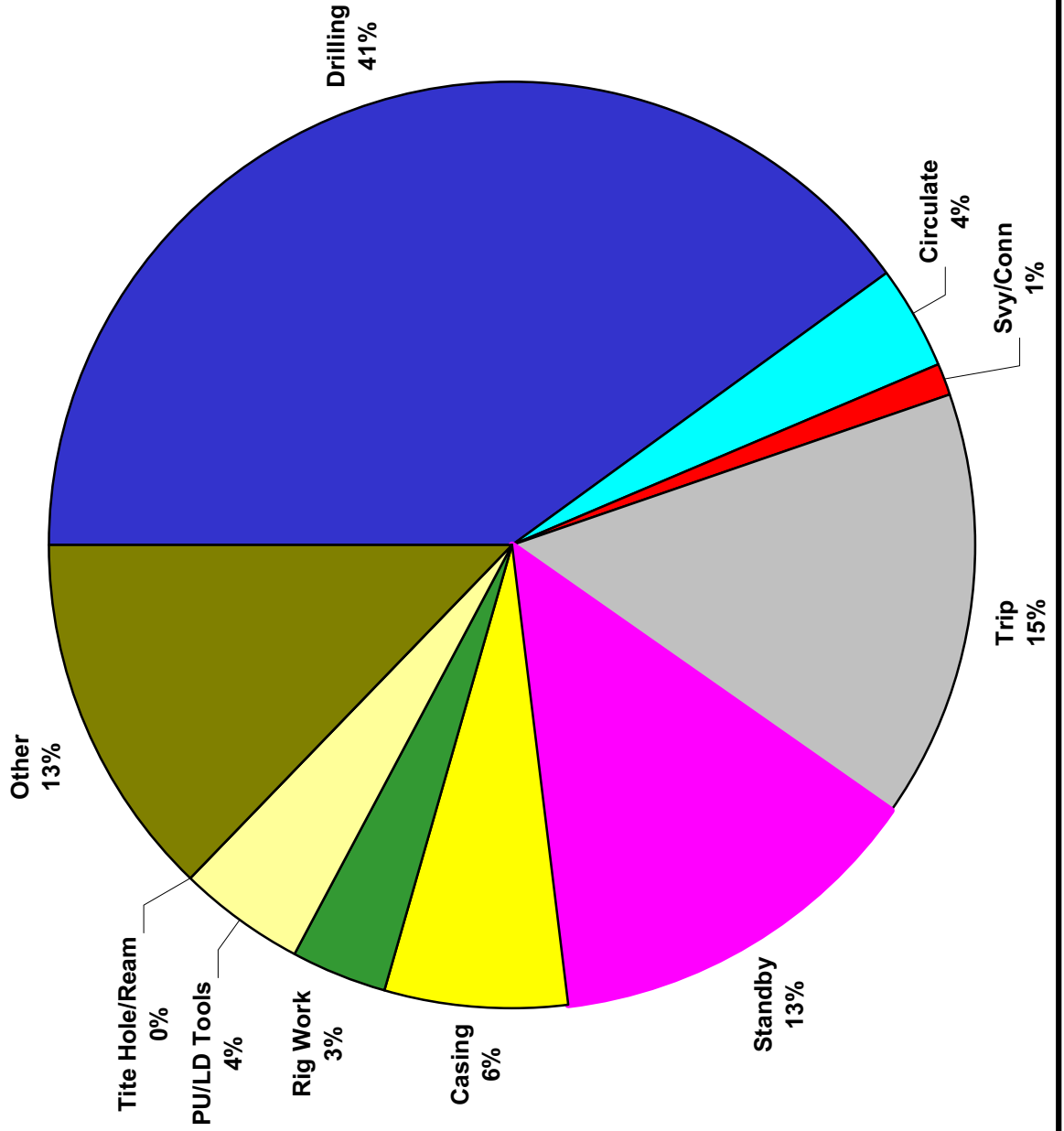






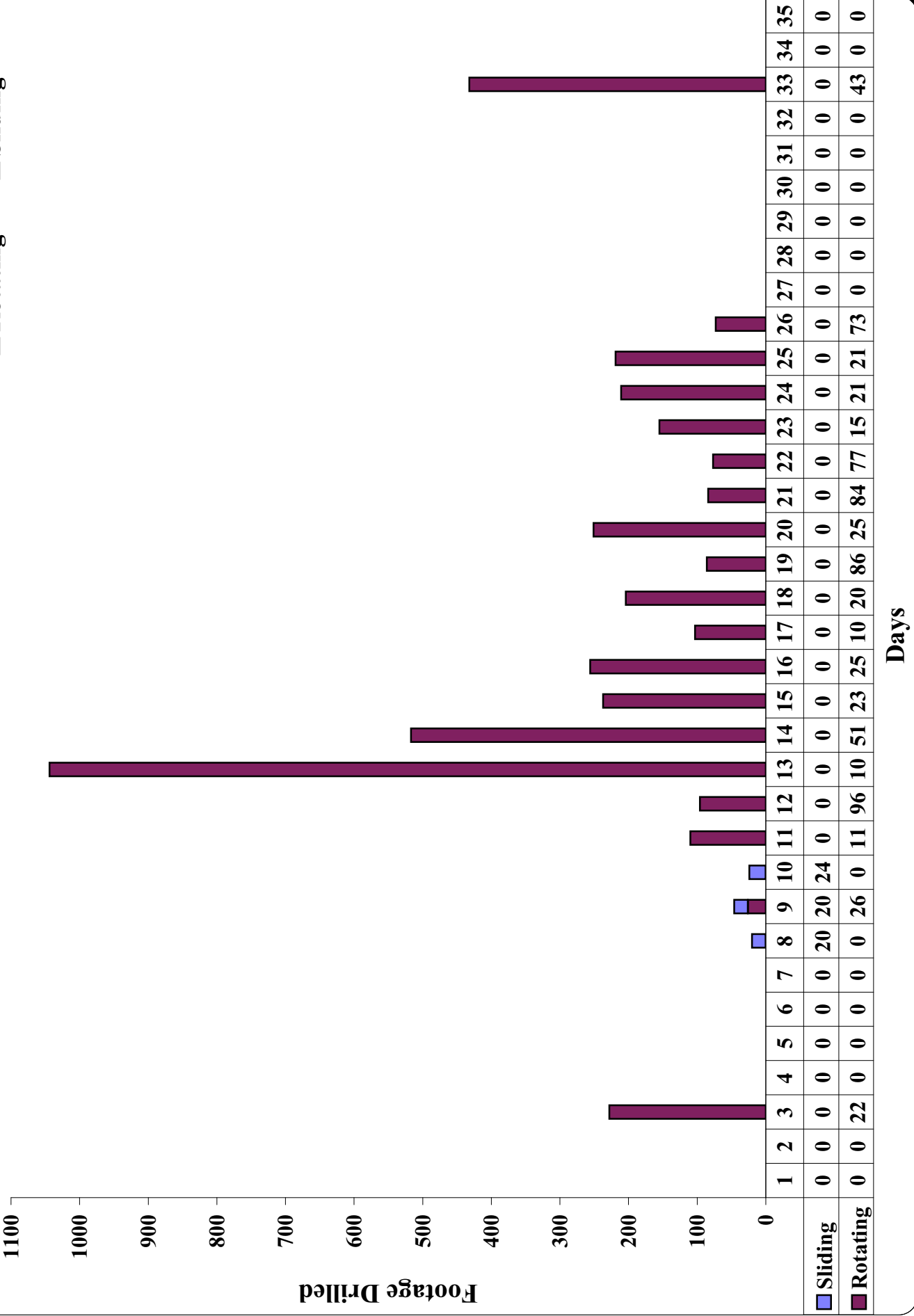
**TIME DISTRIBUTION**

- Drilling
- Circulate
- Svy/Conn
- Trip
- Standby
- Casing
- Rig Work
- PU/LD Tools
- Tite Hole/Ream
- Other



# Rotating vs Sliding

Rotating Sliding



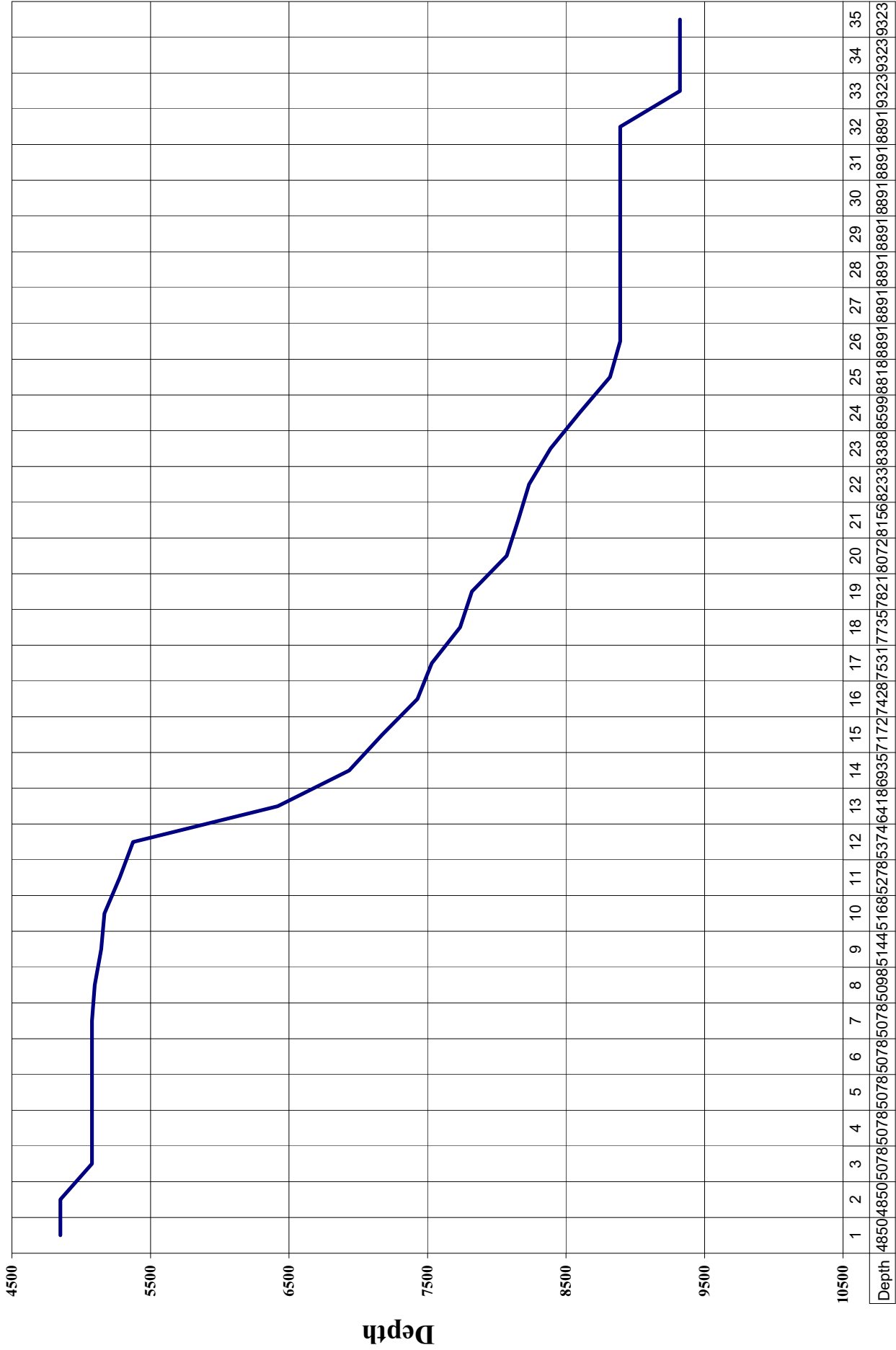
Days

Footage Drilled



# Drilling Curve

## Days vs Depth Drilled



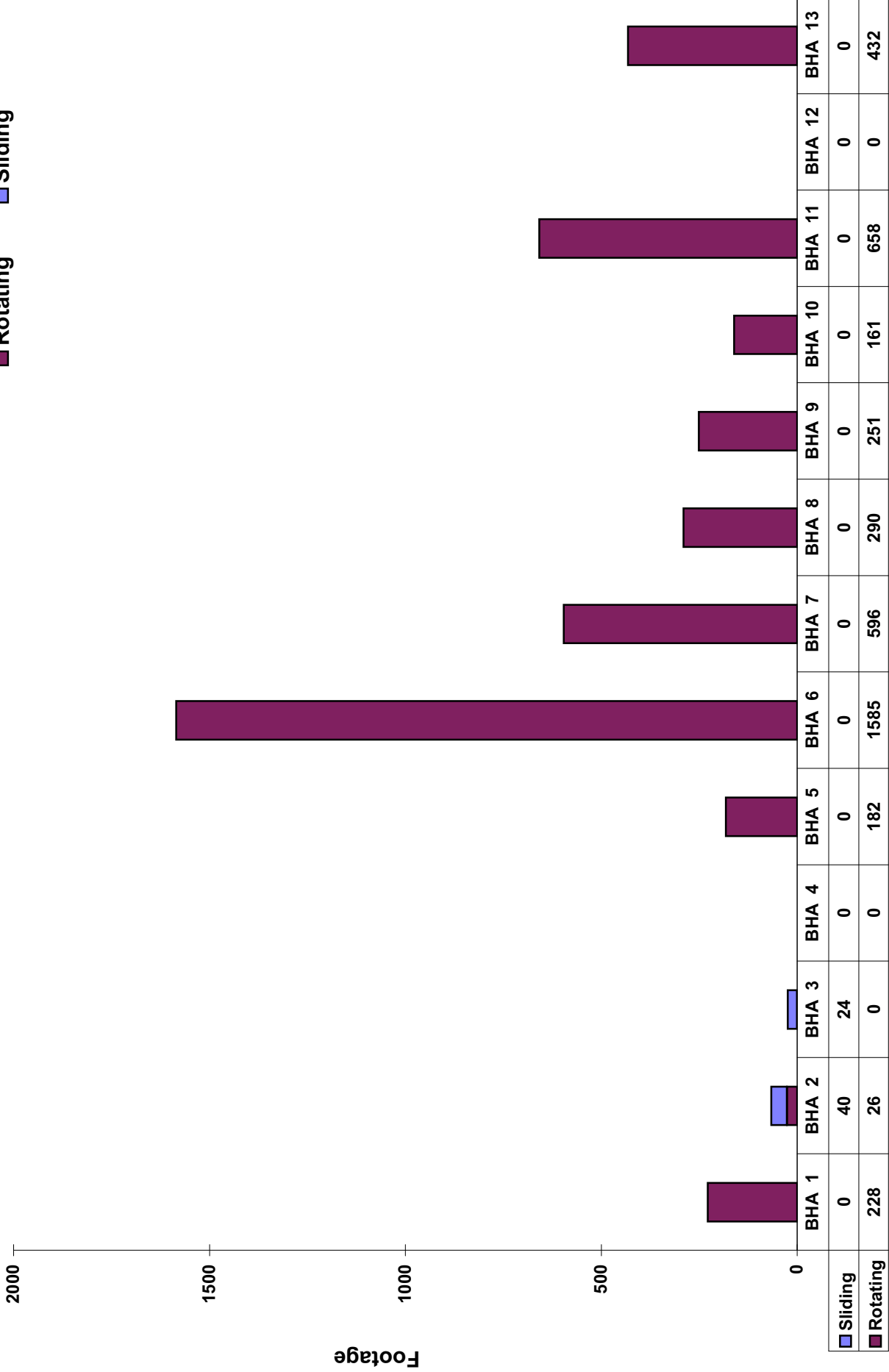
**Days**

**Depth**

# Bottom Hole Assembly

Sliding vs Rotating

Rotating Sliding



# Bottom Hole Assembly



### Daily Report

<b>Report Date:</b> 26-Oct-07					
<b>Company</b>	New Tech Eng.	<b>Job #</b>	40016021	<b>Ftg. Last 24 Hrs</b>	
<b>Rig</b>	Cyclone 20	<b>Report #</b>	1	<b>Last Csg. Set</b>	
<b>Well</b>	CPC-17-1ST1	<b>Midn't Depth</b>	4850	<b>Total PDM Hrs</b>	

BHA #	Bit	BHA#	BHA#
PDM #	Size	Item	Length
Drl hrs	Make		
Cir hrs.	Type		
Cum. Drl. Hrs	Depth In		
Cum. Cir. Hrs	Depth Out		
Bent Sub	Hours		
Bent Hous	Nozzles (TFA)		
Depth In	ROP		
Depth Out	T/B/G		
WOB Rotating	<b>Mud Type</b>		
Pad/Stab OD	Weight		
GPM	Viscosity		
PSI off BTTM	PV/YP		
PSI on BTTM	PH		
Hook Load	Water Loss		
P/U Weight	Solid Content		
S/O Weight	Sand Content		
Btm Hole Temp	Chlorides	<b>TOTAL =</b>	<b>TOTAL =</b>

Time Log			Operation details and comments	FT Hrs	BHA Daily Tally			
From	To	Hours			Rotate	Slide	Circulate	Total
0000	2400	24.00	Travel to location and Wait on SLB tools					
				<b>Motor Inventory</b>				
				Clean				
				Dirty				
				<b>Directional Charges</b>				
				<b>Previous Total</b>				
				<b>Daily Total</b>				
				<b>Cum Total</b>				
				Anadrill Representatives Dan Rhine James Burleson				
				Operator Representatives Jason MournsAlways Clint Rhodd				
Total Hours=			24.00					



## Daily Report

<b>Report Date:</b> 27-Oct-07								
<b>Company</b> New Tech Eng.		<b>Job #</b> 40016021		<b>Ftg. Last 24 Hrs</b>				
<b>Rig</b> Cyclone 20		<b>Report #</b> 2		<b>Last Csg. Set</b>				
<b>Well</b> CPC-17-1ST1		<b>Midn't Depth</b>		<b>Total PDM Hrs</b>				
<b>BHA #</b> 1		<b>Bit</b> 1		<b>BHA#</b>				
<b>PDM #</b>	675-24x-305	<b>Size</b>	8 3/4	<b>Item</b>	<b>Length</b>			
<b>Drl hrs</b>		<b>Make</b>	geodiamond	<b>BIT</b>	0.90			
<b>Cir hrs.</b>		<b>Type</b>	MJ19CHSX	<b>POWER V</b>	13.47			
<b>Cum. Drl. Hrs</b>		<b>Depth In</b>	4850	<b>FILTER SUB</b>	3.03			
<b>Cum. Cir. Hrs</b>		<b>Depth Out</b>		<b>DP SUB</b>	1.91			
<b>Bent Sub</b>		<b>Hours</b>		<b>MOTOR</b>	26.11			
<b>Bent Hous</b>		<b>Nozzles (TFA)</b>	7X13	<b>STAB</b>	5.83			
<b>Depth In</b>		<b>ROP</b>		<b>DP SUB</b>	2.59			
<b>Depth Out</b>		<b>T/B/G</b>		<b>RIDGED MT</b>	30.57			
<b>WOB Rotating</b>		<b>Mud Type</b>		<b>NMDC</b>	31.05			
<b>Pad/Stab OD</b>		<b>Weight</b>		<b>NMDC</b>	31.22			
<b>GPM</b>		<b>Viscosity</b>		<b>DC</b>	338.22			
<b>PSI off BTTM</b>		<b>PV/YP</b>		<b>JARS</b>	32.25			
<b>PSI on BTTM</b>		<b>PH</b>						
<b>Hook Load</b>		<b>Water Loss</b>						
<b>P/U Weight</b>		<b>Solid Content</b>						
<b>S/O Weight</b>		<b>Sand Content</b>						
<b>Btm Hole Temp</b>		<b>Chlorides</b>						
				<b>TOTAL =</b>	517.15			
				<b>TOTAL =</b>				
<b>Time Log</b>			<b>Operation details and comments</b>		<b>BHA Daily Tally</b>			
<b>From</b>	<b>To</b>	<b>Hours</b>			<b>Rotate</b>	<b>Slide</b>	<b>Circulate</b>	<b>Total</b>
0000	1600	16.00	Wait on Schlumberger tools					
1600	1900	3.00	Make up BHA#1					
1900	1930	0.50	Test MWD OK					
1930	2400	4.50	Trip in and survey every 500'					
Total Hours= 24.00								
					<b>Motor Inventory</b>			
					<b>Clean</b>			
					<b>Dirty</b>			
					<b>Directional Charges</b>			
					Basic Power V Operating		\$8,000	
					High temp		\$500	
					Insurance		\$1,950	
					Ridged mount DC		\$500	
					Set up fee		\$10,150	
					Motor Inspection and reline		\$7,750	
					Power V redress		\$12,500	
					<b>Previous Total</b>			
					<b>Daily Total</b>		\$41,350.00	
					<b>Cum Total</b>		\$41,350.00	
					Anadrill Representatives			
					Dan Rhine James Burleson			
					Operator Representatives			
					Jason MournsAlways Clint Rhodd			



# Daily Report

<b>Report Date:</b> 28-Oct-07		<b>Job #</b> 40016021		<b>Ftg. Last 24 Hrs</b> 228	
<b>Company</b>	New Tech Eng.	<b>Report #</b>	3	<b>Last Csg. Set</b>	2001
<b>Rig</b>	Cyclone 20	<b>Midn't Depth</b>	5078	<b>Total PDM Hrs</b>	12.25
<b>Well</b>	CPC-17-1ST1				

BHA #	1	Bit	1	BHA#		BHA#	
PDM #	675-24x-305	Size	8 3/4	Item	Length	Item	Length
Drl hrs	9.25	Make	geodiamond	BIT	0.90		
Cir hrs.	3.00	Type	MJ19CHSX	POWER V	13.47		
Cum. Drl. Hrs	9.25	Depth In	4850	FILTER SUB	3.03		
Cum. Cir. Hrs	3	Depth Out		DP SUB	1.91		
Bent Sub		Hours		MOTOR	26.11		
Bent Hous		Nozzles (TFA)	7X13	STAB	5.83		
Depth In	4850	ROP		DP SUB	2.59		
Depth Out		T/B/G		RIDGED MT	30.57		
WOB Rotating		<b>Mud Type</b>	poly lig	NMDC	31.05		
Pad/Stab OD		Weight	10.3	NMDC	31.22		
GPM	475	Viscosity	39	DC	338.22		
PSI off BTTM	1900	PV/YP	9/14	JARS	32.25		
PSI on BTTM	2070	PH					
Hook Load	48000	Water Loss					
P/U Weight		Solid Content	<b>10.00%</b>				
S/O Weight		Sand Content	0.50%				
Btm Hole Temp	148	Chlorides	600 PPM	<b>TOTAL =</b>	517.15	<b>TOTAL =</b>	

Time Log			Operation details and comments	BHA Daily Tally																					
From	To	Hours		Rotate	Slide	Circulate	Total																		
0000	315	3.25	Trip in survey every 500'	228			228																		
315	445	1.50	Circulate . Clean to bottom	9.25		3.00	12.25																		
445	1400	9.25	Drill from 4850' to 5078' Rotary Power V	<table border="1"> <thead> <tr> <th colspan="2">Motor Inventory</th> </tr> <tr> <th>Clean</th> <th>Dirty</th> </tr> </thead> <tbody> <tr> <td></td> <td></td> </tr> </tbody> </table>				Motor Inventory		Clean	Dirty														
Motor Inventory																									
Clean	Dirty																								
1400	1530	1.50	Circulate																						
1530	1900	3.50	Trip out and lay down tools	<table border="1"> <thead> <tr> <th colspan="2">Directional Charges</th> </tr> </thead> <tbody> <tr> <td>Basic Power V Operating</td> <td>\$8,000</td> </tr> <tr> <td>High temp</td> <td>\$500</td> </tr> <tr> <td>Insurance</td> <td>\$1,950</td> </tr> <tr> <td>Ridged mount DC</td> <td>\$500</td> </tr> <tr> <td>Footage charge @\$17.00</td> <td>\$3,876</td> </tr> <tr> <td><b>Previous Total</b></td> <td>\$41,367.00</td> </tr> <tr> <td><b>Daily Total</b></td> <td>\$14,826.00</td> </tr> <tr> <td><b>Cum Total</b></td> <td>\$56,193.00</td> </tr> </tbody> </table>				Directional Charges		Basic Power V Operating	\$8,000	High temp	\$500	Insurance	\$1,950	Ridged mount DC	\$500	Footage charge @\$17.00	\$3,876	<b>Previous Total</b>	\$41,367.00	<b>Daily Total</b>	\$14,826.00	<b>Cum Total</b>	\$56,193.00
Directional Charges																									
Basic Power V Operating	\$8,000																								
High temp	\$500																								
Insurance	\$1,950																								
Ridged mount DC	\$500																								
Footage charge @\$17.00	\$3,876																								
<b>Previous Total</b>	\$41,367.00																								
<b>Daily Total</b>	\$14,826.00																								
<b>Cum Total</b>	\$56,193.00																								
1900	2400	5.00	Wait on cement and tools	<table border="1"> <thead> <tr> <th colspan="2">Anadrill Representatives</th> </tr> </thead> <tbody> <tr> <td colspan="2">Dan Rhine James Burleson</td> </tr> <tr> <th colspan="2">Operator Representatives</th> </tr> <tr> <td colspan="2">Jason MournsAlways</td> </tr> <tr> <td colspan="2">Clint Rhodd</td> </tr> </tbody> </table>				Anadrill Representatives		Dan Rhine James Burleson		Operator Representatives		Jason MournsAlways		Clint Rhodd									
Anadrill Representatives																									
Dan Rhine James Burleson																									
Operator Representatives																									
Jason MournsAlways																									
Clint Rhodd																									
Total Hours= 24.00																									







# Daily Report

<b>Report Date:</b>	31-Oct-07				
<b>Company</b>	New Tech Eng.	<b>Job #</b>	40016021	<b>Ftg. Last 24 Hrs</b>	
<b>Rig</b>	Cyclone 20	<b>Report #</b>	6	<b>Last Csg. Set</b>	2001
<b>Well</b>	CPC-17-1ST1	<b>Midn't Depth</b>		<b>Total PDM Hrs</b>	12.25

BHA #	1	Bit	1	BHA#		BHA#	
PDM #	675-24x-305	Size	8 3/4	Item	Length	Item	Length
Drl hrs		Make	geodiamond	BIT	0.90		
Cir hrs.		Type	MJ19CHSX	POWER V	13.47		
Cum. Drl. Hrs	9.25	Depth In	4850	FILTER SUB	3.03		
Cum. Cir. Hrs	3	Depth Out		DP SUB	1.91		
Bent Sub		Hours		MOTOR	26.11		
Bent Hous		Nozzles (TFA)	7X13	STAB	5.83		
Depth In	4850	ROP		DP SUB	2.59		
Depth Out		T/B/G		RIDGED MT	30.57		
WOB Rotating		<b>Mud Type</b>	poly lig	NMDC	31.05		
Pad/Stab OD		Weight	10.3	NMDC	31.22		
GPM	475	Viscosity	39	DC	338.22		
PSI off BTTM	1900	PV/YP	9/14	JARS	32.25		
PSI on BTTM	2070	PH					
Hook Load	48000	Water Loss					
P/U Weight		Solid Content	<b>10.00%</b>				
S/O Weight		Sand Content	0.50%				
Btm Hole Temp	148	Chlorides	600 PPM	<b>TOTAL =</b>	517.15	<b>TOTAL =</b>	

Time Log			Operation details and comments	BHA Daily Tally			
From	To	Hours		Rotate	Slide	Circulate	Total
0000	2400	24.00	Cementing operations				
				<b>FT</b>			
				<b>Hrs</b>			
				Motor Inventory			
				Clean			
				Dirty			
				Directional Charges			
				Stand by Power V		\$6,000	
				Ridged mount DC		\$500	
				<b>Previous Total</b>		\$69,176.00	
				<b>Daily Total</b>		\$6,500.00	
				<b>Cum Total</b>		\$75,676.00	
				Anadrill Representatives Dan Rhine James Buleson			
				Operator Representatives Jason MournsAlways Clint Rhodd			
Total Hours=			24.00				





Daily Report

<b>Report Date:</b> 1-Nov-07					
<b>Company</b>	New Tech Eng.	<b>Job #</b>	40016021	<b>Ftg. Last 24 Hrs</b>	-450
<b>Rig</b>	Cyclone 20	<b>Report #</b>	7	<b>Last Csg. Set</b>	2001
<b>Well</b>	CPC-17-1ST1	<b>Midn't Depth</b>	4400	<b>Total PDM Hrs</b>	12.25

BHA #	1	Bit	1	BHA#		BHA#	
PDM #		Size		Item	Length	Item	Length
Drl hrs		Make		BIT			
Cir hrs.		Type		BIT SUB			
Cum. Drl. Hrs		Depth In		DC			
Cum. Cir. Hrs		Depth Out		JARS			
Bent Sub		Hours		DC			
Bent Hous		Nozzles (TFA)					
Depth In		ROP					
Depth Out		T/B/G					
WOB Rotating		<b>Mud Type</b>	poly lig				
Pad/Stab OD		Weight	10.3				
GPM	475	Viscosity	39				
PSI off BTTM	1900	PV/YP	9/14				
PSI on BTTM	2070	PH					
Hook Load	48000	Water Loss					
P/U Weight		Solid Content	10.00%				
S/O Weight		Sand Content	0.50%				
Btm Hole Temp	148	Chlorides	600 PPM	<b>TOTAL =</b>		<b>TOTAL =</b>	

Time Log			Operation details and comments	BHA Daily Tally			
From	To	Hours			Rotate	Slide	Circulate
0000	2200	22.00	WAIT ON CEMENT				
2200	2400	2.00	TRIP IN PIPE TO FEEL PLUG				
			WILL POLISH PLUG TO 4400'				
				<b>Motor Inventory</b>			
				Clean			
				Dirty			
				<b>Directional Charges</b>			
				Stand by Power V		\$6,000	
				Ridged mount DC		\$500	
				Previous Total		\$75,676.00	
				Daily Total		\$6,500.00	
				Cum Total		\$82,176.00	
				Anadrill Representatives Dan Rhine James Bureson			
				Operator Representatives Jason MournsAlways Clint Rhodd			
Total Hours=	24.00						



# Daily Report

<b>Report Date:</b> 2-Nov-07		<b>Job #</b> 40016021		<b>Ftg. Last 24 Hrs</b> 20	
<b>Company</b>	New Tech Eng.	<b>Report #</b>	8	<b>Last Csg. Set</b>	2001
<b>Rig</b>	Cyclone 20	<b>Midn't Depth</b>	4420	<b>Total PDM Hrs</b>	21.25

BHA #	2	Bit	2	BHA#		BHA#	2
PDM #	675-67514	Size	8 3/4	Item	Length	Item	Length
Drl hrs	9.00	Make	ST	BIT		Bit	0.90
Cir hrs.		Type	F47HYP	BIT SUB		Motor	27.93
Cum. Drl. Hrs	9.00	Depth In	4400	DC		x/o	2.59
Cum. Cir. Hrs		Depth Out		JARS		RMDC	30.57
Bent Sub		Hours	9	DC		DC	31.05
Bent Hous	2.2 fix	Nozzles (TFA)	14,15,15			DC	31.22
Depth In	4400	ROP					
Depth Out		T/B/G					
WOB Rotating		<b>Mud Type</b>	poly lig				
Pad/Stab OD	7 1/4	Weight	10.3				
GPM	475	Viscosity	39				
PSI off BTTM	1900	PV/YP	9/14				
PSI on BTTM	2070	PH					
Hook Load	48000	Water Loss					
P/U Weight	135	Solid Content	<b>10.00%</b>				
S/O Weight	125	Sand Content	0.50%				
Btm Hole Temp	148	Chlorides	600 PPM	<b>TOTAL =</b>		<b>TOTAL =</b>	124.26

Time Log			Operation details and comments		BHA Daily Tally			
From	To	Hours			Rotate	Slide	Circulate	Total
0000	400	4.00	Trip in pipe	FT		20		20
400	715	3.25	Polish cement to 4400'	Hrs		9.00		9.00
715	815	1.00	Circulate		<b>Motor Inventory</b>			
815	1015	2.00	Trip out		Clean			
1015	1130	1.25	Make up BHA#2 st1 attempt 2		Dirty			
1130	1500	3.50	Trip ih hole to KOP 4400'		<b>Directional Charges</b>			
1500	2400	9.00	Time drill kop 4400'		HOURLY RATE MOTOR		\$1,800	
					Stand by Power V		\$6,000	
					INSURANCE		\$900	
					HIGH TEMP		\$500	
					Ridged mount DC		\$500	
					MOTOR CHARGES		\$7,750	
					Footage		\$340	
					<b>Previous Total</b>		\$82,176.00	
					<b>Daily Total</b>		\$17,790.00	
					<b>Cum Total</b>		\$99,966.00	
					Anadrill Representatives Dan Rhine James Burleson			
					Operator Representatives Jason MournsAlways Clint Rhodd			
Total Hours=		24.00						



# Daily Report

<b>Report Date:</b> 3-Nov-07					
<b>Company</b>	New Tech Eng.	<b>Job #</b>	40016021	<b>Ftg. Last 24 Hrs</b>	46
<b>Rig</b>	Cyclone 20	<b>Report #</b>	9	<b>Last Csg. Set</b>	2001
<b>Well</b>	CPC-17-1ST1	<b>Midn't Depth</b>	4466	<b>Total PDM Hrs</b>	36.25

BHA #	2	3	Bit	3		BHA#	3	BHA#	2
PDM #	675-67514		Size	8 3/4		Item	Length	Item	Length
Drl hrs	15.00		Make	ST		BIT	0.90	Bit	0.90
Cir hrs.			Type	fhi23		Motor	24.80	Motor	27.93
Cum. Drl. Hrs	24.00		Depth In	4466		x/o	3.16	x/o	2.59
Cum. Cir. Hrs			Depth Out			dpx/o	2.59	RMDC	30.57
Bent Sub			Hours			rmdc	30.57	DC	31.05
Bent Hous	2.2 fix		Nozzles (TFA)	16,15,15		nmdc	31.05	DC	31.22
Depth In	4400		ROP			nmdc	31.22		
Depth Out	4466		T/B/G			dc	338.22		
WOB Rotating			<b>Mud Type</b>	poly lig		jars	32.25		
Pad/Stab OD	7 1/4		Weight	10.1					
GPM	475		Viscosity	42					
PSI off BTTM	1900		PV/YP	20/25					
PSI on BTTM	2070		PH	3.5					
Hook Load	48000		Water Loss	7.4					
P/U Weight	135		Solid Content	10.00%					
S/O Weight	125		Sand Content	0.50%					
Btm Hole Temp	148		Chlorides	600 PPM		<b>TOTAL =</b>	494.76	<b>TOTAL =</b>	124.26

Time Log			Operation details and comments	BHA Daily Tally			
From	To	Hours		Rotate	Slide	Circulate	Total
0000	300	3.00	Time drill f/ 4420 to 4427	26	20		46
300	1500	12.00	Drill from 4427' to 4466' Slide as needed	8.00	7.00		15.00
1500	2030	5.50	Trip out BHA #2 for bit and motor change	<b>Motor Inventory</b> Clean 1 Dirty 2			
2030	2100	0.50	Wait on tools. Not schlumberger				
2100	2200	1.00	Make up BHA#3 with new bit and motor set on 2.83				
2200	2400	2.00	Trip in to 4466'				
				<b>Directional Charges</b> HOURLY RATE MOTOR \$3,000 Stand by Power V \$6,000 INSURANCE \$900 HIGH TEMP \$500 Ridged mount DC \$500 Footage \$782 Previous Total \$99,966.00 Daily Total \$11,682.00 Cum Total \$111,648.00			
				Anadrill Representatives Dan Rhine James Burleson			
				Operator Representatives Jason MournsAlways Clint Rhodd			
Total Hours=			24.00				



# Daily Report

<b>Report Date:</b> 4-Nov-07		<b>Job #</b> 40016021		<b>Ftg. Last 24 Hrs</b> 24	
<b>Company</b>	New Tech Eng.	<b>Report #</b>	10	<b>Last Csg. Set</b>	2001
<b>Rig</b>	Cyclone 20	<b>Midn't Depth</b>	4490	<b>Total PDM Hrs</b>	40.75

BHA #	4	3	Bit	3		BHA#	3	BHA#	4
PDM #	675-67514	FT65002	Size	8 3/4		Item	Length	Item	Length
Drl hrs	0	3.50	Make	ST		BIT	0.90	POWER V	14.55
Cir hrs.	0	1.00	Type	fhi23		Motor	24.80	FILTER SUB	3.00
Cum. Drl. Hrs	0	3.50	Depth In	4466		x/o	3.16	DOUBLE PIN	3.04
Cum. Cir. Hrs	0	1	Depth Out	4490		dpx/o	2.59	MOTOR	25.73
Bent Sub			Hours			rmcdc	30.57	STABILIZER	5.20
Bent Hous		2.85	Nozzles (TFA)	16,15,15		nmcdc	31.05	UBHO	3.17
Depth In	4490	4466	ROP	6.86		nmcdc	31.22	NMDC	29.64
Depth Out	4490	4490	T/B/G	1-1-in		dc	338.22	FLOW SUB	3.01
WOB Rotating			<b>Mud Type</b>	poly lig		jars	32.25	STABILIZER	6.00
Pad/Stab OD	7 1/4	7 1/4	Weight	10.1				NMFLEX WT	31.10
GPM		390	Viscosity	38					
PSI off BTTM			PV/YP	16/20					
PSI on BTTM			PH	3.5					
Hook Load			Water Loss	7.4					
P/U Weight	135		Solid Content	9.00%					
S/O Weight	125		Sand Content	0.50%					
Btm Hole Temp	148	148	Chlorides	500 PPM		<b>TOTAL =</b>	494.76	<b>TOTAL =</b>	124.44

Time Log			Operation details and comments		BHA Daily Tally			
From	To	Hours			Rotate	Slide	Circulate	Total
0000	30	0.50	Trip in BHA#3			24		24
30	400	3.50	Drill from 4466' to 4490' Slide only			2.50	1.00	3.50
400	500	1.00	Circulate		<b>Motor Inventory</b>			
500	830	3.50	Trip out BHA#3		Clean	1		
830	1230	4.00	Lay down BHA#3 and Pick up BHA#4		Dirty	2		
1230	1500	2.50	Trip in BHA#4		<b>Directional Charges</b>			
1500	1600	1.00	Try to circulate unable to break circulation		Power V Redress	\$12,500		
1600	2000	4.00	Trip out BHA#4 Test Power V NO GO		Operating Power V	\$8,000		
2000	2230	2.50	Make up BHA#5 test New powerV powerV test MWD		INSURANCE	\$1,950		
2230	2400	1.50	Trip in BHA#5		HIGH TEMP	\$500		
					Ridged mount DC	\$500		
					Footage			
					Previous Total	\$111,648.00		
					Daily Total	\$23,450.00		
					Cum Total	\$135,098.00		
					Anadrill Representatives Dan Rhine James Burleson			
					Operator Representatives Jason MournsAlways Clint Rhodd			
Total Hours=		24.00						





# Daily Report

<b>Report Date:</b> 6-Nov-07		<b>Job #</b> 40016021		<b>Ftg. Last 24 Hrs</b> 96	
<b>Company</b>	New Tech Eng.	<b>Report #</b>	12	<b>Last Csg. Set</b>	2001
<b>Rig</b>	Cyclone 20	<b>Midn't Depth</b>	4696	<b>Total PDM Hrs</b>	66.75

BHA #	5	6	Bit	5rr	6	BHA#	5	BHA#	6
PDM #	24x-305	24x-305	Size	8 3/4	8 3/4	Item	Length	Item	Length
Drl hrs	12.00	4.00	Make	GEO	geo	BIT	0.90	BIT	0.90
Cir hrs.	1.00		Type	MJ19CHSX	MI616	POWER V	14.55	POWER V	14.55
Cum. Drl. Hrs	16.00		Depth In	4490	4672	FILTER SUB	3.00	FILTER SUB	3.00
Cum. Cir. Hrs	6		Depth Out	4672		DOUBLE PIN	3.04	DOUBLE PIN	3.04
Bent Sub			Hours	12	4	MOTOR	25.73	MOTOR	25.73
Bent Hous			Nozzles (TFA)	5X12,2X11		STABILIZER	5.20	STABILIZER	5.20
Depth In	4490		ROP	11.38		UBHO	3.17	UBHO	3.17
Depth Out			T/B/G	3-4-I		NMDC	29.64	NMDC	29.64
WOB Rotating	15		<b>Mud Type</b>	poly lig		FLOW SUB	3.01	FLOW SUB	3.01
Pad/Stab OD	7 1/4		Weight	10.1		STABILIZER	6.00	STABILIZER	6.00
GPM	427		Viscosity	38		NMFLEX WT	31.10	NMFLEX WT	31.10
PSI off BTTM	1800		PV/YP	16/20		NMFLEX WT	31.96	NMFLEX WT	31.96
PSI on BTTM	2020		PH	3.5					
Hook Load	135		Water Loss	7.4					
P/U Weight	145		Solid Content	9.00%					
S/O Weight	122		Sand Content	0.50%					
Btm Hole Temp	147		Chlorides	500 PPM		<b>TOTAL =</b>	157.30	<b>TOTAL =</b>	157.30

Time Log			Operation details and comments		BHA Daily Tally			
From	To	Hours			Rotate	Slide	Circulate	Total
0000	345	3.75	Drill from 4600' to 4626' Rotary Power V	FT	96			96
345	415	0.50	Circulate Repair Pumps	Hrs	16.00		1.00	17.00
415	1230	8.25	Drill f/ 4626 to 4672'.	<b>Motor Inventory</b>				
1230	1300	0.50	Circulate					
1300	1600	3.00	Trip out BHA #5	Clean 1				
1600	1830	2.50	Change bit and test power V and MWD	Dirty 2				
1830	2000	1.50	Trip in BHA # 6 Circ every 10 stands	<b>Directional Charges</b>				
2000	2400	4.00	Drill f/ 4672' to 4696					
				Operating Power V \$8,000				
				INSURANCE \$1,950				
				HIGH TEMP \$500				
				Footage @ \$17.00 \$1,632				
				Previous Total \$147,418.00				
				Daily Total \$12,082.00				
				Cum Total \$159,500.00				
Anadrill Representatives					Dan Rhine Gehl Mittelsted			
Operator Representatives					Jason MournsAlways Clint Rhodd			
Total Hours=			24.00					



# Daily Report

<b>Report Date:</b> 7-Nov-07					
<b>Company</b>	New Tech Eng.	<b>Job #</b>	40016021	<b>Ftg. Last 24 Hrs</b>	1044
<b>Rig</b>	Cyclone 20	<b>Report #</b>	13	<b>Last Csg. Set</b>	2001
<b>Well</b>	CPC-17-1ST1	<b>Midn't Depth</b>	5740	<b>Total PDM Hrs</b>	89.25

BHA #	6	Bit	6	BHA#	6	BHA#	
PDM #	675-24x-305	Size	8 3/4	Item	Length	Item	
Drl hrs	21.25	Make	geo	BIT	0.90	BIT	
Cir hrs.	1.25	Type	MI616	POWER V	14.55	POWER V	
Cum. Drl. Hrs	25.25	Depth In	4672	FILTER SUB	3.00	FILTER SUB	
Cum. Cir. Hrs	1.25	Depth Out		DOUBLE PIN	3.04	DOUBLE PIN	
Bent Sub		Hours	25.25	MOTOR	25.73	MOTOR	
Bent Hous		Nozzles (TFA)	5X12,2X11	STABILIZER	5.20	STABILIZER	
Depth In	4672	ROP	11.38	UBHO	3.17	UBHO	
Depth Out		T/B/G	3-4-I	NMDC	29.64	NMDC	
WOB Rotating	15	<b>Mud Type</b>	poly lig	FLOW SUB	3.01	FLOW SUB	
Pad/Stab OD	7 1/4	Weight	9.4	STABILIZER	6.00	STABILIZER	
GPM	427	Viscosity	38	NMFLEX WT	31.10	NMFLEX WT	
PSI off BTTM	1500	PV/YP	9/7	NMFLEX WT	31.96	NMFLEX WT	
PSI on BTTM	1650	PH	12				
Hook Load	143	Water Loss	8.2				
P/U Weight	147	Solid Content	7.00%				
S/O Weight	140	Sand Content	tr				
Btm Hole Temp	161.6	Chlorides	600 PPM	<b>TOTAL =</b>	157.30	<b>TOTAL =</b>	

Time Log			Operation details and comments	BHA Daily Tally			
From	To	Hours		Rotate	Slide	Circulate	Total
0000	1700	17.00	Drill from 4696' to 5545' Power Vortech	1044			1044
1700	1800	1.00	Acc. survey and connections	21.25		1.25	22.50
1800	1915	1.25	Circulate repair pason	<b>Motor Inventory</b> Clean 1 Dirty 2			
1915	2330	4.25	Drill f/ 5545' to 5740' rotary Power Vortech				
2330	2400	0.50	Acc. survey and connections	<b>Directional Charges</b> Operating Power V \$8,000 INSURANCE \$1,950 HIGH TEMP \$500 Footage @ \$17.00 \$17,748 Previous Total \$159,500.00 Daily Total \$28,198.00 Cum Total \$187,698.00 Anadrill Representatives Dan Rhine Gehl Mittelsted Operator Representatives Jason MournsAlways Clint Rhodd			
Total Hours= 24.00							



# Daily Report

<b>Report Date:</b> 8-Nov-07					
<b>Company</b>	New Tech Eng.	<b>Job #</b>	40016021	<b>Ftg. Last 24 Hrs</b>	517
<b>Rig</b>	Cyclone 20	<b>Report #</b>	14	<b>Last Csg. Set</b>	2001
<b>Well</b>	CPC-17-1ST1	<b>Midn't Depth</b>	6257	<b>Total PDM Hrs</b>	110.75

BHA #	6	Bit	6	BHA#	6	BHA#	
PDM #	675-24x-305	Size	8 3/4	Item	Length	Item	
Drl hrs	21.00	Make	geo	BIT	0.90		
Cir hrs.	0.50	Type	MI616	POWER V	14.55		
Cum. Drl. Hrs	46.25	Depth In	4672	FILTER SUB	3.00		
Cum. Cir. Hrs	1.75	Depth Out	6257	DOUBLE PIN	3.04		
Bent Sub		Hours	46.25	MOTOR	25.73		
Bent Hous		Nozzles (TFA)	5X12,2X11	STABILIZER	5.20		
Depth In	4672	ROP	11.38	UBHO	3.17		
Depth Out		T/B/G	3-4-I	NMDC	29.64		
WOB Rotating	15	<b>Mud Type</b>	poly lig	FLOW SUB	3.01		
Pad/Stab OD	7 1/4	Weight	9.5	STABILIZER	6.00		
GPM	427	Viscosity	37	NMFLEX WT	31.10		
PSI off BTTM	1500	PV/YP	15/11	NMFLEX WT	31.96		
PSI on BTTM	1650	PH	11.5				
Hook Load	143	Water Loss	8.2				
P/U Weight	147	Solid Content	9.00%				
S/O Weight	140	Sand Content	tr				
Btm Hole Temp	161.6	Chlorides	500 PPM	<b>TOTAL =</b>	157.30	<b>TOTAL =</b>	

Time Log			Operation details and comments	BHA Daily Tally			
From	To	Hours		Rotate	Slide	Circulate	Total
0000	500	5.00	Drill from 5740' to 5890' Power V Rotary	517			517
500	600	1.00	Acc surveys and connections	21.00		0.50	21.50
600	1600	10.00	Drill f/ 5890 to 6200'	<b>Motor Inventory</b>			
1600	1630	0.50	Rig service	Clean	1		
1630	2230	6.00	Drill f/ 6200 to 6257'	Dirty	2		
2230	2300	0.50	Circulate bottoms up	<b>Directional Charges</b>			
2300	2400	1.00	Trip out				
				Operating Power V		\$8,000	
				INSURANCE		\$1,950	
				HIGH TEMP		\$500	
				Footage @ \$17.00		\$8,789	
				<b>Previous Total</b>		\$187,698.00	
				<b>Daily Total</b>		\$19,239.00	
				<b>Cum Total</b>		\$206,937.00	
				Anadrill Representatives Dan Rhine Gehl Mittelsted			
				Operator Representatives Jason MournsAlways Clint Rhodd			
Total Hours=			24.00				





# Daily Report

<b>Report Date:</b> 9-Nov-07					
<b>Company</b>	New Tech Eng.	<b>Job #</b>	40016021	<b>Ftg. Last 24 Hrs</b>	237
<b>Rig</b>	Cyclone 20	<b>Report #</b>	15	<b>Last Csg. Set</b>	2001
<b>Well</b>	CPC-17-1ST1	<b>Midn't Depth</b>	6494	<b>Total PDM Hrs</b>	123.25

BHA #	7	Bit	7rr	BHA#	7	BHA#
PDM #	675-67545	Size	8 3/4	Item	Length	Item
Drl hrs	11.75	Make	ST	BIT	0.90	
Cir hrs.	0.75	Type	FHI23VPS	POWER V	14.55	
Cum. Drl. Hrs	11.75	Depth In	6257	FILTER SUB	3.00	
Cum. Cir. Hrs	0.75	Depth Out		DOUBLE PIN	3.04	
Bent Sub		Hours	11.75	MOTOR	25.73	
Bent Hous		Nozzles (TFA)	15,16,18	STABILIZER	5.20	
Depth In	6257	ROP		UBHO	3.17	
Depth Out		T/B/G		NMDC	29.64	
WOB Rotating	15	<b>Mud Type</b>	poly lig	FLOW SUB	3.01	
Pad/Stab OD	7 1/4	Weight	9.5	STABILIZER	6.00	
GPM	427	Viscosity	37	NMFLEX WT	31.10	
PSI off BTTM	1500	PV/YP	15/11	NMFLEX WT	31.96	
PSI on BTTM	1650	PH	11.5			
Hook Load	143	Water Loss	8.2			
P/U Weight	147	Solid Content	9.00%			
S/O Weight	140	Sand Content	tr			
Btm Hole Temp	165	Chlorides	500 PPM	<b>TOTAL =</b>	157.30	<b>TOTAL =</b>

Time Log			Operation details and comments	BHA Daily Tally			
From	To	Hours		Rotate	Slide	Circulate	Total
0000	230	2.50	Trip out BHA #6	237			237
230	630	4.00	Change out BHA#6 Make up BHA #7 Test	11.75		0.75	12.50
630	1100	4.50	Trip in BHA #7	<b>Motor Inventory</b> Clean 1 Dirty 2			
1100	1145	0.75	Circulate and clean 40' to bottom				
1145	1800	6.25	Drill from 6257' to 6360' Rotary Power V	<b>Directional Charges</b> Motor inspection \$1,250 Operating Power V \$8,000 INSURANCE \$1,950 HIGH TEMP \$500 Power V X5R 67 Redress \$12,500 Motor reline \$6,500 Footage @ \$17.00 \$4,029 Previous Total \$206,937.00 Daily Total \$34,729.00 Cum Total \$241,666.00			
1800	1830	0.50	Acc surveys and connections				
1830	2400	5.50	Drill f/ 6360 to 6494'	Anadrill Representatives Dan Rhine Gehl Mittelsted  Operator Representatives Jason MournsAlways Clint Rhodd			
Total Hours= 24.00							



# Daily Report

<b>Report Date:</b> 10-Nov-07					
<b>Company</b>	New Tech Eng.	<b>Job #</b>	40016021	<b>Ftg. Last 24 Hrs</b>	256
<b>Rig</b>	Cyclone 20	<b>Report #</b>	16	<b>Last Csg. Set</b>	2001
<b>Well</b>	CPC-17-1ST1	<b>Midn't Depth</b>	6750	<b>Total PDM Hrs</b>	145.75

BHA #	7	Bit	7000	BHA#	7	BHA#
PDM #	675-67545	Size	8 3/4	Item	Length	Item
Drl hrs	22.50	Make	ST	BIT	0.90	
Cir hrs.		Type	FHI23VPS	POWER V	14.55	
Cum. Drl. Hrs	34.25	Depth In	6257	FILTER SUB	3.00	
Cum. Cir. Hrs	0.75	Depth Out		DOUBLE PIN	3.04	
Bent Sub		Hours	34.25	MOTOR	25.73	
Bent Hous		Nozzles (TFA)	15,16,18	STABILIZER	5.20	
Depth In	6257	ROP		UBHO	3.17	
Depth Out		T/B/G		NMDC	29.64	
WOB Rotating	15	<b>Mud Type</b>	poly lig	FLOW SUB	3.01	
Pad/Stab OD	7 1/4	Weight	9.5	STABILIZER	6.00	
GPM	427	Viscosity	38	NMFLEX WT	31.10	
PSI off BTTM	1500	PV/YP	12/17	NMFLEX WT	31.96	
PSI on BTTM	1650	PH	9.5			
Hook Load	143	Water Loss	8.2			
P/U Weight	147	Solid Content	9.00%			
S/O Weight	140	Sand Content	0.20%			
Btm Hole Temp	165	Chlorides	500 PPM	<b>TOTAL =</b>	157.30	<b>TOTAL =</b>

Time Log			Operation details and comments	BHA Daily Tally			
From	To	Hours		Rotate	Slide	Circulate	Total
0000	400	4.00	Drill from 6494' to 6547' Rotary Power V	256			256
400	430	0.50	Acc surveys and connections	22.50			22.50
430	1600	11.50	Drill f/ 6547 to 6700	<b>Motor Inventory</b> Clean 1 Dirty 2			
1600	1630	0.50	RIG SERVICE				
1630	1700	0.50	Acc surveys and connections	<b>Directional Charges</b> Operating Power V \$8,000 INSURANCE \$1,950 HIGH TEMP \$500 Footage @ \$17.00 \$4,352 Previous Total \$241,666.00 Daily Total \$14,802.00 Cum Total \$256,468.00			
1700	2400	7.00	Drill 8 3/4 hole f/ 6700 to 6750				
Total Hours= 24.00			Anadrill Representatives Dan Rhine Gehl Mittelsted Operator Representatives CLINT RHODD Clint Rhodd				



# Daily Report

<b>Report Date:</b> 11-Nov-07		<b>Job #</b> 40016021		<b>Ftg. Last 24 Hrs</b> 103	
<b>Company</b>	New Tech Eng.	<b>Report #</b>	17	<b>Last Csg. Set</b>	2001
<b>Rig</b>	Cyclone 20	<b>Midn't Depth</b>	6853	<b>Total PDM Hrs</b>	154.75
<b>Well</b>	CPC-17-1ST1				

BHA #	7	8	Bit	7	8	BHA#	7	BHA#	8
PDM #	675-67545	675-67545	Size	8 3/4	8 3/4	Item	Length	Item	
Drl hrs	9.00		Make	ST	security	BIT	0.90		
Cir hrs.			Type	FHI23VPS	XS38S	POWER V	14.55		
Cum. Drl. Hrs	43.25		Depth In	6257	6853	FILTER SUB	3.00		
Cum. Cir. Hrs	0.75		Depth Out	6853		DOUBLE PIN	3.04		
Bent Sub			Hours	43.25		MOTOR	25.73		
Bent Hous			Nozzles (TFA)	15,16,18		STABILIZER	5.20		
Depth In	6257		ROP			UBHO	3.17		
Depth Out	6853		T/B/G			NMDC	29.64		
WOB Rotating	15		<b>Mud Type</b>	poly lig		FLOW SUB	3.01		
Pad/Stab OD	7 1/4		Weight	9.5		STABILIZER	6.00		
GPM	427		Viscosity	38		NMFLEX WT	31.10		
PSI off BTTM	1500		PV/YP	12/17		NMFLEX WT	31.96		
PSI on BTTM	1650		PH	9.5					
Hook Load	143		Water Loss	8.2					
P/U Weight	147		Solid Content	9.00%					
S/O Weight	140		Sand Content	0.20%					
Btm Hole Temp	165		Chlorides	500 PPM		<b>TOTAL =</b>	157.30	<b>TOTAL =</b>	

Time Log			Operation details and comments		BHA Daily Tally			
From	To	Hours			Rotate	Slide	Circulate	Total
0000	900	9.00	Drill from 6750' to 6853' Rotary Power V		103			103
900	930	0.50	Acc surveys and connections		9.00			9.00
930	1400	4.50	Trip out BHA #7		<b>Motor Inventory</b> Clean 1 Dirty 2			
1400	1500	1.00	Lay down BHA#7					
1500	1800	3.00	Clean Mud tanks		<b>Directional Charges</b> Power redress X5R66 \$12,500 Operating Power V \$8,000 INSURANCE \$1,950 HIGH TEMP \$500 Footage @ \$17.00 \$1,751 Previous Total \$256,468.00 Daily Total \$24,701.00 Cum Total \$281,169.00			
1800	1930	1.50	Make up and test power V sn X5R66					
1930	2400	4.50	Trip in BHA #8		Anadrill Representatives Dan Rhine Gehl Mittelsted Operator Representatives CLINT RHODD Clint Rhodd			
Total Hours=		24.00						



# Daily Report

<b>Report Date:</b> 12-Nov-07		<b>Job #</b> 40016021		<b>Ftg. Last 24 Hrs</b> 204	
<b>Company</b>	New Tech Eng.	<b>Report #</b>	18	<b>Last Csg. Set</b>	2001
<b>Rig</b>	Cyclone 20	<b>Midn't Depth</b>	7057	<b>Total PDM Hrs</b>	178.25
<b>Well</b>	CPC-17-1ST1				

BHA #	8	Bit	8	BHA#	8	BHA#	8
PDM #	675-67545	Size	8 3/4	Item	Length	Item	
Drl hrs	22.50	Make	security	BIT	0.90		
Cir hrs.	1.00	Type	XS38S	POWER V	14.55		
Cum. Drl. Hrs	22.50	Depth In	6853	FILTER SUB	3.00		
Cum. Cir. Hrs	1	Depth Out		DOUBLE PIN	3.04		
Bent Sub		Hours	22.50	MOTOR	25.73		
Bent Hous		Nozzles (TFA)	16,16,16	STABILIZER	5.20		
Depth In	6257	ROP		UBHO	3.17		
Depth Out	6853	T/B/G		NMDC	29.64		
WOB Rotating	15	<b>Mud Type</b>	poly lig	FLOW SUB	3.01		
Pad/Stab OD	7 1/4	Weight	9.5	STABILIZER	6.00		
GPM	406	Viscosity	38	NMFLEX WT	31.10		
PSI off BTTM	1650	PV/YP	12/17	NMFLEX WT	31.96		
PSI on BTTM	1800	PH	9.5				
Hook Load	148	Water Loss	8.2				
P/U Weight	150	Solid Content	<b>9.00%</b>				
S/O Weight	145	Sand Content	0.20%				
Btm Hole Temp	190	Chlorides	500 PPM	<b>TOTAL =</b>	157.30	<b>TOTAL =</b>	

Time Log			Operation details and comments	BHA Daily Tally			
From	To	Hours		Rotate	Slide	Circulate	Total
0000	100	1.00	Circulate and clean to bottom BHA #8	204			204
100	2330	22.50	Drill from 6853' to 7057' Power V Vortex	22.50		1.00	23.50
2330	2400	0.50	Acc surveys and connections				
				<b>Motor Inventory</b>			
				Clean	1		
				Dirty			
				<b>Directional Charges</b>			
				Operating Power V	\$8,000		
				INSURANCE	\$1,950		
				HIGH TEMP	\$500		
				Footage @ \$17.00	\$3,468		
				<b>Previous Total</b>	\$281,169.00		
				<b>Daily Total</b>	\$13,918.00		
				<b>Cum Total</b>	\$295,087.00		
				Anadrill Representatives Dan Rhine Gehl Mittelsted			
				Operator Representatives CLINT RHODD Clint Rhodd			
Total Hours=			24.00				



# Daily Report

<b>Report Date:</b> 13-Nov-07		<b>Job #</b> 40016021		<b>Ftg. Last 24 Hrs</b> 86	
<b>Company</b>	New Tech Eng.	<b>Report #</b>	19	<b>Last Csg. Set</b>	2001
<b>Rig</b>	Cyclone 20	<b>Midn't Depth</b>	7143	<b>Total PDM Hrs</b>	190.75
<b>Well</b>	CPC-17-1ST1				

BHA #	8	9	Bit	8	9	BHA#	8	BHA#	9
PDM #	675-67545	675-24x220	Size	8 3/4	8 3/4	Item	Length	Item	
Drl hrs	10.25		Make	security	security	BIT	0.90		
Cir hrs.	1.25	1.00	Type	XS38S	FM3755Z	POWER V	14.55		
Cum. Drl. Hrs	32.75		Depth In	6853	7143	FILTER SUB	3.00		
Cum. Cir. Hrs	2.25	1	Depth Out	7143		DOUBLE PIN	3.04		
Bent Sub			Hours	32.75		MOTOR	25.73		
Bent Hous			Nozzles (TFA)	16,16,16		STABILIZER	5.20		
Depth In	6257		ROP			UBHO	3.17		
Depth Out	6853		T/B/G	2-2-I		NMDC	29.64		
WOB Rotating	15		<b>Mud Type</b>	poly lig		FLOW SUB	3.01		
Pad/Stab OD	7 1/4		Weight	9.5		STABILIZER	6.00		
GPM	406		Viscosity	38		NMFLEX WT	31.10		
PSI off BTTM	1650		PV/YP	12/17		NMFLEX WT	31.96		
PSI on BTTM	1800		PH	9.5					
Hook Load	148		Water Loss	8.2					
P/U Weight	150		Solid Content	9.00%					
S/O Weight	145		Sand Content	0.20%					
Btm Hole Temp	190		Chlorides	500 PPM		<b>TOTAL =</b>	157.30	<b>TOTAL =</b>	

Time Log			Operation details and comments		BHA Daily Tally			
From	To	Hours			Rotate	Slide	Circulate	Total
0000	1015	10.25	Drill from 7057' to XXXX' Slide as needed	FT	86			86
1015	1045	0.50	Acc survey and connection time	Hrs	10.25		2.25	12.50
1045	1200	1.25	Circulate bottoms up		<b>Motor Inventory</b>			
1200	1615	4.25	Trip out BHA # 8 for a bit		Clean			
1615	1800	1.75	Lay out BHA# 8		Dirty	1		
1800	1830	0.50	Rig work fix tong weights		<b>Directional Charges</b>			
1830	1930	1.00	Pick up BHA# 9		Operating Power V		\$8,000	
1930	2300	3.50	Trip in BHA #9		INSURANCE		\$1,950	
2300	2400	1.00	Ream and clean 90' to 7143'.		HIGH TEMP		\$500	
					motor reline sn67524x220		\$6,500	
					motor inspection		\$1,250	
					Footage @ \$17.00		\$1,462	
					Previous Total		\$291,619.00	
					Daily Total		\$19,662.00	
					Cum Total		\$315,249.00	
					Anadrill Representatives Dan Rhine Gehl Mittelsted			
					Operator Representatives CLINT RHODD Clint Rhodd			
Total Hours=	24.00							





# Daily Report

<b>Report Date:</b> 15-Nov-07		<b>Job #</b> 40016021		<b>Ftg. Last 24 Hrs</b> 84	
<b>Company</b>	New Tech Eng.	<b>Report #</b>	21	<b>Last Csg. Set</b>	2001
<b>Rig</b>	Cyclone 20	<b>Midn't Depth</b>	7478	<b>Total PDM Hrs</b>	225.50

BHA #	10	9	Bit	10		BHA#	10	BHA#	
PDM #	675-24x220		Size	8 3/4		Item	Length	Item	
Drl hrs	9.50		Make	security		BIT	0.90		
Cir hrs.	1.00	1.00	Type	FM3755Z		POWER V	14.55		
Cum. Drl. Hrs	9.50		Depth In	7143		FILTER SUB	3.00		
Cum. Cir. Hrs	1		Depth Out	7394		DOUBLE PIN	3.04		
Bent Sub			Hours	9.50		MOTOR	25.73		
Bent Hous			Nozzles (TFA)	7x16		STABILIZER	5.20		
Depth In	7143		ROP			UBHO	3.17		
Depth Out	7394		T/B/G			NMDC	29.64		
WOB Rotating	15		<b>Mud Type</b>	poly lig		FLOW SUB	3.01		
Pad/Stab OD	7 1/4		Weight	9.5		STABILIZER	6.00		
GPM	406		Viscosity	38		NMFLEX WT	31.10		
PSI off BTTM	1650		PV/YP	12/15		NMFLEX WT	31.96		
PSI on BTTM	1800		PH	9.5					
Hook Load	180		Water Loss	8.2					
P/U Weight	210		Solid Content	9.00%					
S/O Weight	174		Sand Content	0.20%					
Btm Hole Temp	200		Chlorides	500 PPM		<b>TOTAL =</b>	157.30	<b>TOTAL =</b>	

Time Log			Operation details and comments	BHA Daily Tally																							
From	To	Hours		Rotate	Slide	Circulate	Total																				
0000	100	1.00	Circulate bottoms up	84			84																				
100	530	4.50	Trip out BHA #9	9.50		2.00	11.50																				
530	830	3.00	Change BHA 9 to BHA#10 Test same	<table border="1"> <thead> <tr> <th colspan="2">Motor Inventory</th> </tr> <tr> <th>Clean</th> <th>Dirty</th> </tr> </thead> <tbody> <tr> <td></td> <td>1</td> </tr> </tbody> </table>				Motor Inventory		Clean	Dirty		1														
Motor Inventory																											
Clean	Dirty																										
	1																										
830	1300	4.50	Trip in BHA #10																								
1300	1400	1.00	Circulate and clean 90' to 7394'.	<table border="1"> <thead> <tr> <th colspan="2">Directional Charges</th> </tr> </thead> <tbody> <tr> <td>Footage @ \$17.00</td> <td>\$1,482</td> </tr> <tr> <td>Operating Power V</td> <td>\$8,000</td> </tr> <tr> <td>INSURANCE</td> <td>\$1,950</td> </tr> <tr> <td>HIGH TEMP</td> <td>\$500</td> </tr> <tr> <td>POWER V redresscux5r013</td> <td>\$12,500</td> </tr> <tr> <td>Correction on cost off</td> <td>(\$500)</td> </tr> <tr> <td><b>Previous Total</b></td> <td>\$329,966.00</td> </tr> <tr> <td><b>Daily Total</b></td> <td>\$23,932.00</td> </tr> <tr> <td><b>Cum Total</b></td> <td>\$353,844.00</td> </tr> </tbody> </table>				Directional Charges		Footage @ \$17.00	\$1,482	Operating Power V	\$8,000	INSURANCE	\$1,950	HIGH TEMP	\$500	POWER V redresscux5r013	\$12,500	Correction on cost off	(\$500)	<b>Previous Total</b>	\$329,966.00	<b>Daily Total</b>	\$23,932.00	<b>Cum Total</b>	\$353,844.00
Directional Charges																											
Footage @ \$17.00	\$1,482																										
Operating Power V	\$8,000																										
INSURANCE	\$1,950																										
HIGH TEMP	\$500																										
POWER V redresscux5r013	\$12,500																										
Correction on cost off	(\$500)																										
<b>Previous Total</b>	\$329,966.00																										
<b>Daily Total</b>	\$23,932.00																										
<b>Cum Total</b>	\$353,844.00																										
1400	1915	5.25	Drill from 7394' to 7425' Power V Vortex	Anadrill Representatives Dan Rhine Gehl Mittelsted  Operator Representatives CLINT RHODD Clint Rhodd																							
1915	1945	0.50	Unplug screen of walnut shell																								
1945	2400	4.25	Drill f/ 7425 to 7478'. Power V Vortex																								
Total Hours= 24.00																											



# Daily Report

<b>Report Date:</b> 16-Nov-07		<b>Job #</b> 40016021		<b>Ftg. Last 24 Hrs</b> 77	
<b>Company</b>	New Tech Eng.	<b>Report #</b>	22	<b>Last Csg. Set</b>	2001
<b>Rig</b>	Cyclone 20	<b>Midn't Depth</b>	7555	<b>Total PDM Hrs</b>	239.50
<b>Well</b>	CPC-17-1ST1				

BHA #	10	11	Bit	10	11	BHA#	10	BHA#	11
PDM #	675-24x305	675-24x305	Size	8 3/4	8 3/4	Item	Length	Item	
Drl hrs	12.50		Make	security	SMITH	BIT	0.90	BIT	0.90
Cir hrs.	1.50		Type	FM3755Z	FH40	POWER V	10.01	POWER V	14.55
Cum. Drl. Hrs	22.00		Depth In	7394	7555	FILTER SUB	3.00	FILTER SUB	3.00
Cum. Cir. Hrs	2.5		Depth Out	7555		DOUBLE PIN	3.04	DOUBLE PIN	3.04
Bent Sub			Hours	22.00		MOTOR	25.73	MOTOR	25.73
Bent Hous			Nozzles (TFA)	7x16	3X14	STABILIZER	5.20	STABILIZER	5.20
Depth In	7394		ROP			UBHO	3.17	UBHO	3.17
Depth Out	7555		T/B/G	1-1-I		NMDC	29.64	NMDC	29.64
WOB Rotating	15		<b>Mud Type</b>	poly lig		FLOW SUB	3.01	FLOW SUB	3.01
Pad/Stab OD	7 1/4		Weight	9.5		STABILIZER	6.00	STABILIZER	6.00
GPM	406		Viscosity	38		NMFLEX WT	31.10	NMFLEX WT	31.10
PSI off BTTM	1650		PV/YP	12/15		NMFLEX WT	31.96	NMFLEX WT	31.96
PSI on BTTM	1800		PH	9.5					
Hook Load	180		Water Loss	8.2					
P/U Weight	210		Solid Content	9.00%					
S/O Weight	174		Sand Content	0.20%					
Btm Hole Temp	200		Chlorides	500 PPM		<b>TOTAL =</b>	152.76	<b>TOTAL =</b>	157.30

Time Log			Operation details and comments		BHA Daily Tally			
From	To	Hours			Rotate	Slide	Circulate	Total
0000	1230	12.50	Drill from 7478' to 7555' Power V Vortex	FT	77			77
1230	1400	1.50	Circulate	Hrs	12.50		1.50	14.00
1400	1430	0.50	Set kelly back and take subs off	<b>Motor Inventory</b>				
1430	2000	5.50	Trip out BHA #10					
2000	2100	1.00	Lay out power V	Dirty	1			
2100	2200	1.00	Cut and slip	<b>Directional Charges</b>				
2200	2315	1.25	Make up power V and test					
2315	2400	0.75	Trip in kelly up test MWD	Operating Power V	\$8,000			
				INSURANCE	\$1,950			
				HIGH TEMP	\$500			
				power V redress CU682	\$12,500			
				<b>Previous Total</b>	\$353,844.00			
				<b>Daily Total</b>	\$24,259.00			
				<b>Cum Total</b>	\$378,103.00			
				Anadrill Representatives Dan Rhine Gehl Mittelsted				
				Operator Representatives CLINT RHODD Clint Rhodd				
Total Hours=		24.00						





# Daily Report

<b>Report Date:</b> 17-Nov-07		<b>Job #</b> 40016021		<b>Ftg. Last 24 Hrs</b> 155	
<b>Company</b>	New Tech Eng.	<b>Report #</b>	23	<b>Last Csg. Set</b>	2001
<b>Rig</b>	Cyclone 20	<b>Midn't Depth</b>	7710	<b>Total PDM Hrs</b>	257.50
<b>Well</b>	CPC-17-1ST1				

BHA #	11	Bit	11	BHA#	11	BHA#	11
PDM #	675-24x305	Size	8 3/4	Item	Length	Item	11
Drl hrs	17.00	Make	SMITH	BIT	0.90	BIT	0.90
Cir hrs.	1.00	Type	FH40	POWER V	10.01	POWER V	14.55
Cum. Drl. Hrs	17.00	Depth In	7555	FILTER SUB	3.00	FILTER SUB	3.00
Cum. Cir. Hrs	1	Depth Out		DOUBLE PIN	3.04	DOUBLE PIN	3.04
Bent Sub		Hours	17.00	MOTOR	25.73	MOTOR	25.73
Bent Hous		Nozzles (TFA)	3x14	STABILIZER	5.20	STABILIZER	5.20
Depth In	7555	ROP		UBHO	3.17	UBHO	3.17
Depth Out		T/B/G		NMDC	29.64	NMDC	29.64
WOB Rotating	25	<b>Mud Type</b>	poly lig	FLOW SUB	3.01	FLOW SUB	3.01
Pad/Stab OD	7 1/4	Weight	9.5	STABILIZER	6.00	STABILIZER	6.00
GPM	420	Viscosity	38	NMFLEX WT	31.10	NMFLEX WT	31.10
PSI off BTTM	2000	PV/YP	12/15	NMFLEX WT	31.96	NMFLEX WT	31.96
PSI on BTTM	2150	PH	9.5				
Hook Load	180	Water Loss	8.2				
P/U Weight	210	Solid Content	9.00%				
S/O Weight	174	Sand Content	0.20%				
Btm Hole Temp	205	Chlorides	500 PPM	<b>TOTAL =</b>	152.76	<b>TOTAL =</b>	157.30

Time Log			Operation details and comments	BHA Daily Tally																					
From	To	Hours		Rotate	Slide	Circulate	Total																		
0000	500	5.00	Trip in BHA#11	155			155																		
500	600	1.00	Circulate and clean 90' to 7555'	17.00			17.00																		
600	1700	11.00	Drill from 7555' to 7640' PowerV Vortex	<table border="1"> <thead> <tr> <th colspan="2">Motor Inventory</th> </tr> <tr> <th>Clean</th> <th>Dirty</th> </tr> </thead> <tbody> <tr> <td></td> <td>1</td> </tr> <tr> <td></td> <td></td> </tr> </tbody> </table>				Motor Inventory		Clean	Dirty		1												
Motor Inventory																									
Clean	Dirty																								
	1																								
1700	1715	0.25	Rig Service																						
1715	1800	0.75	Acc surveys and connections																						
1800	2400	6.00	Drill f/ 7640 to 7710'																						
				<table border="1"> <thead> <tr> <th colspan="2">Directional Charges</th> </tr> </thead> <tbody> <tr> <td>Footage @ \$17.00</td> <td>\$2,635</td> </tr> <tr> <td>Operating Power V</td> <td>\$8,000</td> </tr> <tr> <td>INSURANCE</td> <td>\$1,950</td> </tr> <tr> <td>HIGH TEMP</td> <td>\$500</td> </tr> <tr> <td></td> <td></td> </tr> <tr> <td><b>Previous Total</b></td> <td>\$378,103.00</td> </tr> <tr> <td><b>Daily Total</b></td> <td>\$13,085.00</td> </tr> <tr> <td><b>Cum Total</b></td> <td>\$391,188.00</td> </tr> </tbody> </table>				Directional Charges		Footage @ \$17.00	\$2,635	Operating Power V	\$8,000	INSURANCE	\$1,950	HIGH TEMP	\$500			<b>Previous Total</b>	\$378,103.00	<b>Daily Total</b>	\$13,085.00	<b>Cum Total</b>	\$391,188.00
Directional Charges																									
Footage @ \$17.00	\$2,635																								
Operating Power V	\$8,000																								
INSURANCE	\$1,950																								
HIGH TEMP	\$500																								
<b>Previous Total</b>	\$378,103.00																								
<b>Daily Total</b>	\$13,085.00																								
<b>Cum Total</b>	\$391,188.00																								
				Anadrill Representatives Dan Rhine Gehl Mittelsted																					
				Operator Representatives CLINT RHODD Clint Rhodd																					
Total Hours=			24.00																						



## Daily Report

<b>Report Date:</b> 18-Nov-07											
<b>Company</b>		New Tech Eng.		<b>Job #</b>		40016021		<b>Ftg. Last 24 Hrs</b>		211	
<b>Rig</b>		Cyclone 20		<b>Report #</b>		24		<b>Last Csg. Set</b>		2001	
<b>Well</b>		CPC-17-1ST1		<b>Midn't Depth</b>		7921		<b>Total PDM Hrs</b>		279.75	
<hr/>											
<b>BHA #</b>	<b>11</b>			<b>Bit</b>	<b>11</b>			<b>BHA#</b>	<b>11</b>		
PDM #	675-24x305			Size	8 3/4			Item	Length		
Drl hrs	22.25			Make	SMITH			BIT	0.90		
Cir hrs.				Type	FH40			POWER V	10.01		
Cum. Drl. Hrs	40.25			Depth In	7555			FILTER SUB	3.00		
Cum. Cir. Hrs	1			Depth Out				DOUBLE PIN	3.04		
Bent Sub				Hours	40.25			MOTOR	25.73		
Bent Hous				Nozzles (TFA)	3x14			STABILIZER	5.20		
Depth In	7555			ROP				UBHO	3.17		
Depth Out				T/B/G				NMDC	29.64		
WOB Rotating	25			<b>Mud Type</b>	poly lig			FLOW SUB	3.01		
Pad/Stab OD	7 1/4			Weight	9.5			STABILIZER	6.00		
GPM	420			Viscosity	38			NMFLEX WT	31.10		
PSI off BTTM	2000			PV/YP	12/15			NMFLEX WT	31.96		
PSI on BTTM	2150			PH	9.5						
Hook Load	180			Water Loss	8.2						
P/U Weight	210			Solid Content	9.00%						
S/O Weight	174			Sand Content	0.20%						
Btm Hole Temp	205			Chlorides	500 PPM			<b>TOTAL =</b>	152.76		
								<b>TOTAL =</b>	157.30		
<hr/>											
<b>Time Log</b>			<b>Operation details and comments</b>					<b>BHA Daily Tally</b>			
<b>From</b>	<b>To</b>	<b>Hours</b>						<b>Rotate</b>	<b>Slide</b>	<b>Circulate</b>	<b>Total</b>
0000	2115	21.25	Drill from 7710' to 7902' Slide as needed					211			211
2115	2145	0.50	Accumulated surveys and connections					23.25			23.25
2145	2200	0.25	Rig service								
2200	2400	2.00	Drill f/7902' to 7921' PowerV Vortex								
								<b>Motor Inventory</b>			
								<b>Clean</b>			
								<b>Dirty</b>	1		
								<b>Directional Charges</b>			
								Footage @ \$17.00		\$3,587	
								Operating Power V		\$8,000	
								INSURANCE		\$1,950	
								HIGH TEMP		\$500	
								<b>Previous Total</b>		\$391,188.00	
								<b>Daily Total</b>		\$14,037.00	
								<b>Cum Total</b>		\$405,225.00	
								Anadrill Representatives			
								Dan Rhine Gehl Mittelsted			
								Operator Representatives			
								CLINT RHODD			
								Clint Rhodd			
<b>Total Hours=</b>			24.00								

<b>Report Date:</b> 19-Nov-07					
<b>Company</b>	New Tech Eng.	<b>Job #</b>	40016021	<b>Ftg. Last 24 Hrs</b>	219
<b>Rig</b>	Cyclone 20	<b>Report #</b>	25	<b>Last Csg. Set</b>	2001
<b>Well</b>	CPC-17-1ST1	<b>Midn't Depth</b>	8140	<b>Total PDM Hrs</b>	303.00

<b>BHA #</b>	<b>11</b>		<b>Bit</b>	<b>11</b>		<b>BHA#</b>	<b>11</b>	<b>BHA#</b>	<b>11</b>
PDM #	675-24x305		Size	8 3/4		Item	Length	Item	
Drl hrs	23.25		Make	SMITH		BIT	0.90	BIT	0.90
Cir hrs.			Type	FH40		POWER V	10.01	POWER V	14.55
Cum. Drl. Hrs	63.50		Depth In	7555		FILTER SUB	3.00	FILTER SUB	3.00
Cum. Cir. Hrs	1		Depth Out			DOUBLE PIN	3.04	DOUBLE PIN	3.04
Bent Sub			Hours	63.50		MOTOR	25.73	MOTOR	25.73
Bent Hous			Nozzles (TFA)	3x14		STABILIZER	5.20	STABILIZER	5.20
Depth In	7555		ROP			UBHO	3.17	UBHO	3.17
Depth Out			T/B/G			NMDC	29.64	NMDC	29.64
WOB Rotating	25		<b>Mud Type</b>	poly lig		FLOW SUB	3.01	FLOW SUB	3.01
Pad/Stab OD	7 1/4		Weight	9.5		STABILIZER	6.00	STABILIZER	6.00
GPM	420		Viscosity	38		NMFLEX WT	31.10	NMFLEX WT	31.10
PSI off BTTM	2000		PV/YP	12/15		NMFLEX WT	31.96	NMFLEX WT	31.96
PSI on BTTM	2150		PH	9.5					
Hook Load	180		Water Loss	8.2					
P/U Weight	210		Solid Content	9.00%					
S/O Weight	174		Sand Content	0.20%					
Btm Hole Temp	205		Chlorides	500 PPM		<b>TOTAL =</b>	152.76	<b>TOTAL =</b>	157.30

<b>Time Log</b>			<b>Operation details and comments</b>			<b>BHA Daily Tally</b>					
<b>From</b>	<b>To</b>	<b>Hours</b>				<b>Rotate</b>	<b>Slide</b>	<b>Circulate</b>	<b>Total</b>		
0000	600	6.00	Drill from 7921' to 7973' PowerV Vortex			219			219		
600	630	0.50	Accumulated surveys			23.25			23.25		
630	1900	12.50	Drill f/ 7973 to 8088			<b>Motor Inventory</b>					
1900	1915	0.25	Rig service			Clean					
1915	2400	4.75	Drill f/ 8088' to 8140			Dirty	1				
						<b>Directional Charges</b>					
						Footage @ \$17.00	\$3,723				
						Operating Power V	\$8,000				
						INSURANCE	\$1,950				
						HIGH TEMP	\$500				
						Drill Pipe screen(2)	\$2,000				
						<b>Previous Total</b>	\$405,225.00				
						<b>Daily Total</b>	\$16,173.00				
						<b>Cum Total</b>	\$421,398.00				
						Anadrill Representatives Dan Rhine Gehl Mittelsted					
						Operator Representatives CLINT RHODD Clint Rhodd					
Total Hours=		24.00									



## Daily Report

<b>Report Date:</b> 20-Nov-07		<b>Company</b>	New Tech Eng.	<b>Job #</b>	40016021	<b>Ftg. Last 24 Hrs</b>	73
<b>Rig</b>	Cyclone 20	<b>Report #</b>	26	<b>Last Csg. Set</b>	2001		
<b>Well</b>	CPC-17-1ST1	<b>Midn't Depth</b>	8213	<b>Total PDM Hrs</b>	303.00		

BHA #	11		Bit	11		BHA#	11	BHA#	11
PDM #	675-24x305		Size	8 3/4		Item	Length	Item	
Drl hrs			Make	SMITH		BIT	0.90	BIT	0.90
Cir hrs.			Type	FH40		POWER V	10.01	POWER V	14.55
Cum. Drl. Hrs	63.50		Depth In	7555		FILTER SUB	3.00	FILTER SUB	3.00
Cum. Cir. Hrs	1		Depth Out			DOUBLE PIN	3.04	DOUBLE PIN	3.04
Bent Sub			Hours	63.50		MOTOR	25.73	MOTOR	25.73
Bent Hous			Nozzles (TFA)	3x14		STABILIZER	5.20	STABILIZER	5.20
Depth In	7555		ROP			UBHO	3.17	UBHO	3.17
Depth Out			T/B/G			NMDC	29.64	NMDC	29.64
WOB Rotating	25		<b>Mud Type</b>	poly lig		FLOW SUB	3.01	FLOW SUB	3.01
Pad/Stab OD	7 1/4		Weight	9.5		STABILIZER	6.00	STABILIZER	6.00
GPM	420		Viscosity	38		NMFLEX WT	31.10	NMFLEX WT	31.10
PSI off BTTM	2000		PV/YP	12/15		NMFLEX WT	31.96	NMFLEX WT	31.96
PSI on BTTM	2150		PH	9.5					
Hook Load	180		Water Loss	8.2					
P/U Weight	210		Solid Content	<b>9.00%</b>					
S/O Weight	174		Sand Content	0.20%					
Btm Hole Temp	205		Chlorides	500 PPM		<b>TOTAL =</b>	152.76	<b>TOTAL =</b>	157.30

Time Log			Operation details and comments		BHA Daily Tally			
From	To	Hours			Rotate	Slide	Circulate	Total
0000	800	8.00	Drill from 8140' to 8213' PowerV Vortex	FT	73			73
800	1200	4.00	Circulate and condition hole	Hrs	8.00			8.00
1200	1600	4.00	Trip out BHA #11					
1600	1700	1.00	Lay down tools					
1700	2400	7.00	Wait on logging unit and logging					
					<b>Motor Inventory</b>			
					Clean			
					Dirty	1		
					<b>Directional Charges</b>			
					Footage @ \$17.00			\$1,241
					Operating Power V			\$8,000
					INSURANCE			\$1,950
					HIGH TEMP			\$500
					High temp credit			(\$10,500)
					<b>Previous Total</b>			\$421,398.00
					<b>Daily Total</b>			\$1,191.00
					<b>Cum Total</b>			\$422,589.00
					Anadrill Representatives			
					Dan Rhine   Gehl Mittelsted			
					Operator Representatives			
					CLINT RHODD			
					Clint Rhodd			

Total Hours= 24.00





### Daily Report

<b>Report Date:</b> 22-Nov-07		<b>Job #</b>	40016021	<b>Ftg. Last 24 Hrs</b>	
<b>Company</b>	New Tech Eng.	<b>Report #</b>	28	<b>Last Csg. Set</b>	2001
<b>Rig</b>	Cyclone 20	<b>Midn't Depth</b>	8213	<b>Total PDM Hrs</b>	303.00
<b>Well</b>	CPC-17-1ST1				

BHA #	11	Bit	11	BHA#	11	BHA#	11
PDM #	675-24x305	Size	8 3/4	Item	Length	Item	
Drl hrs		Make	SMITH	BIT	0.90	BIT	0.90
Cir hrs.		Type	FH40	POWER V	10.01	POWER V	14.55
Cum. Drl. Hrs	63.50	Depth In	7555	FILTER SUB	3.00	FILTER SUB	3.00
Cum. Cir. Hrs	1	Depth Out		DOUBLE PIN	3.04	DOUBLE PIN	3.04
Bent Sub		Hours	63.50	MOTOR	25.73	MOTOR	25.73
Bent Hous		Nozzles (TFA)	3x14	STABILIZER	5.20	STABILIZER	5.20
Depth In	7555	ROP		UBHO	3.17	UBHO	3.17
Depth Out		T/B/G		NMDC	29.64	NMDC	29.64
WOB Rotating	25	<b>Mud Type</b>	poly lig	FLOW SUB	3.01	FLOW SUB	3.01
Pad/Stab OD	7 1/4	Weight	9.5	STABILIZER	6.00	STABILIZER	6.00
GPM	420	Viscosity	38	NMFLEX WT	31.10	NMFLEX WT	31.10
PSI off BTTM	2000	PV/YP	12/15	NMFLEX WT	31.96	NMFLEX WT	31.96
PSI on BTTM	2150	PH	9.5				
Hook Load	180	Water Loss	8.2				
P/U Weight	210	Solid Content	9.00%				
S/O Weight	174	Sand Content	0.20%				
Btm Hole Temp	205	Chlorides	500 PPM	<b>TOTAL =</b>	152.76	<b>TOTAL =</b>	157.30

Time Log			Operation details and comments	BHA Daily Tally			
From	To	Hours		Rotate	Slide	Circulate	Total
0000	2400	24.00	Casing operations				
				Motor Inventory			
				Clean			
				Dirty	1		
				Directional Charges			
				Power V stand by		\$6,000	
				<b>Previous Total</b>		\$439,089.00	
				<b>Daily Total</b>		\$6,000.00	
				<b>Cum Total</b>		\$434,589.00	
				Anadrill Representatives			
				Dan Rhine Gehl Mittelsted			
				Operator Representatives			
				CLINT RHODD			
				Clint Rhodd			
Total Hours=		24.00					



# Daily Report

<b>Report Date:</b> 23-Nov-07					
<b>Company</b>	New Tech Eng.	<b>Job #</b>	40016021	<b>Ftg. Last 24 Hrs</b>	
<b>Rig</b>	Cyclone 20	<b>Report #</b>	29	<b>Last Csg. Set</b>	2001
<b>Well</b>	CPC-17-1ST1	<b>Midn't Depth</b>	8213	<b>Total PDM Hrs</b>	303.00

BHA #		Bit		BHA#		BHA#	
PDM #		Size		Item	Length	Item	
Drl hrs		Make		BIT		BIT	
Cir hrs.		Type		POWER V		POWER V	
Cum. Drl. Hrs		Depth In		FILTER SUB		FILTER SUB	
Cum. Cir. Hrs		Depth Out		DOUBLE PIN		DOUBLE PIN	
Bent Sub		Hours		MOTOR		MOTOR	
Bent Hous		Nozzles (TFA)		STABILIZER		STABILIZER	
Depth In		ROP		UBHO		UBHO	
Depth Out		T/B/G		NMDC		NMDC	
WOB Rotating		<b>Mud Type</b>		FLOW SUB		FLOW SUB	
Pad/Stab OD		Weight		STABILIZER		STABILIZER	
GPM		Viscosity		NMFLEX WT		NMFLEX WT	
PSI off BTTM		PV/YP		NMFLEX WT		NMFLEX WT	
PSI on BTTM		PH					
Hook Load		Water Loss					
P/U Weight		Solid Content					
S/O Weight		Sand Content					
Btm Hole Temp		Chlorides		<b>TOTAL =</b>		<b>TOTAL =</b>	

Time Log			Operation details and comments	BHA Daily Tally			
From	To	Hours		Rotate	Slide	Circulate	Total
0000	2400	24.00	Casing operations				
				FT			
				Hrs			
				<b>Motor Inventory</b>			
				Clean			
				Dirty	1		
				<b>Directional Charges</b>			
				Power V stand by		\$6,000	
				<b>Previous Total</b>		\$434,589.00	
				<b>Daily Total</b>		\$6,000.00	
				<b>Cum Total</b>		\$440,589.00	
				Anadrill Representatives Dan Rhine Gehl Mittelsted			
				Operator Representatives CLINT RHODD Clint Rhodd			
Total Hours=		24.00					



## Daily Report

<b>Report Date:</b> 24-Nov-07		<b>Job #</b> 40016021		<b>Ftg. Last 24 Hrs</b>	
<b>Company</b>	New Tech Eng.	<b>Report #</b>	30	<b>Last Csg. Set</b>	2001
<b>Rig</b>	Cyclone 20	<b>Midn't Depth</b>	8213	<b>Total PDM Hrs</b>	303.00

BHA #		Bit		BHA#		BHA#	
PDM #		Size		Item	Length	Item	
Drl hrs		Make		BIT		BIT	
Cir hrs.		Type		POWER V		POWER V	
Cum. Drl. Hrs		Depth In		FILTER SUB		FILTER SUB	
Cum. Cir. Hrs		Depth Out		DOUBLE PIN		DOUBLE PIN	
Bent Sub		Hours		MOTOR		MOTOR	
Bent Hous		Nozzles (TFA)		STABILIZER		STABILIZER	
Depth In		ROP		UBHO		UBHO	
Depth Out		T/B/G		NMDC		NMDC	
WOB Rotating		<b>Mud Type</b>		FLOW SUB		FLOW SUB	
Pad/Stab OD		Weight		STABILIZER		STABILIZER	
GPM		Viscosity		NMFLEX WT		NMFLEX WT	
PSI off BTTM		PV/YP		NMFLEX WT		NMFLEX WT	
PSI on BTTM		PH					
Hook Load		Water Loss					
P/U Weight		Solid Content					
S/O Weight		Sand Content					
Btm Hole Temp		Chlorides		<b>TOTAL =</b>		<b>TOTAL =</b>	

Time Log			Operation details and comments		BHA Daily Tally			
From	To	Hours			Rotate	Slide	Circulate	Total
0000	2400	24.00	NIPPLE UP BOP'S AND TESTING	FT				
				Hrs				
					Motor Inventory			
					Clean			
					Dirty	1		
					Directional Charges			
					Power V stand by		\$6,000	
					<b>Previous Total</b>		\$434,589.00	
					<b>Daily Total</b>		\$6,000.00	
					<b>Cum Total</b>		\$446,589.00	
					Anadrill Representatives			
					Dan Rhine Gehl Mittelsted			
					Operator Representatives			
					CLINT RHODD			
					Clint Rhodd			
Total Hours=		24.00						







# Daily Report

<b>Report Date:</b>	26-Nov-07				
<b>Company</b>	<b>New Tech Eng.</b>	<b>Job #</b>	40016021	<b>Ftg. Last 24 Hrs</b>	
<b>Rig</b>	<b>Cyclone 20</b>	<b>Report #</b>	32	<b>Last Csg. Set</b>	8178
<b>Well</b>	<b>CPC-17-1ST1</b>	<b>Midn't Depth</b>	8213	<b>Total PDM Hrs</b>	303.00

BHA #	12	13	Bit	12		BHA#	12	BHA#	13
PDM #		47547375H	Size	6 1/8		Item	Length	Item	0.90
Drl hrs			Make	Sec		BIT	0.75	Bit	14.55
Cir hrs.			Type	EBSX42		BIT SUB	3.51	POWER V	3.00
Cum. Drl. Hrs			Depth In	8213		DC'S	362.39	FILTER SUB	3.04
Cum. Cir. Hrs			Depth Out	8213		HWT DP	389.75	DOUBLE PIN	25.73
Bent Sub			Hours			X/O	3.54	MOTOR	5.20
Bent Hous			Nozzles (TFA)	3X20		JAR	29.48	STABILIZER	3.17
Depth In	8213		ROP	20		X/O	3.53	UBHO	29.64
Depth Out	8213		T/B/G	1-1-I		9 WT DP	275.85	NMDC	3.01
WOB Rotating			<b>Mud Type</b>	poly lig				FLOW SUB	6.00
Pad/Stab OD			Weight	9.5				STABILIZER	31.10
GPM	300		Viscosity	38				NMFLEX WT	31.96
PSI off BTTM	1500		PV/YP	12/15				NMFLEX WT	1.00
PSI on BTTM	1500		PH	9.5				X/O	
Hook Load			Water Loss	8.2					
P/U Weight			Solid Content	9.00%					
S/O Weight			Sand Content	0.20%					
Btm Hole Temp			Chlorides	500 PPM		<b>TOTAL =</b>	1068.80	<b>TOTAL =</b>	157.40

Time Log			Operation details and comments	FT	BHA Daily Tally			
From	To	Hours			Rotate	Slide	Circulate	Total
0000	830	8.50	Pick up drill pipe.					
830	1130	3.00	Slip new drill line			1.00	1.00	
1130	1530	4.00	Drill cement, float , shoe TO 8213					
1530	1630	1.00	Circulate					
1630	2030	4.00	Trip out BHA #12					
2030	2330	3.00	Make up BHA # 13 AND TEST					
2330	2400	0.50	Trip in BHA #13					
Total Hours=	24.00							

Motor Inventory	
Clean	
Dirty	1

Directional Charges	
Power V Operating	\$8,000
Insurance Motor,PV,MWD	\$1,950
Power V Redress	\$12,500
Motor insp sn 475-47375-H	\$1,250
footage @\$17.00	
<b>Previous Total</b>	
<b>Daily Total</b>	\$23,700.00
<b>Cum Total</b>	\$23,700.00

Anadrill Representatives Dan Rhine Gehl Mittelsted
Operator Representatives CLINT RHODD



# Daily Report

<b>Report Date:</b> 27-Nov-07					
<b>Company</b>	New Tech Eng.	<b>Job #</b>	40016021	<b>Ftg. Last 24 Hrs</b>	432
<b>Rig</b>	Cyclone 20	<b>Report #</b>	33	<b>Last Csg. Set</b>	8178
<b>Well</b>	CPC-17-1ST1	<b>Midn't Depth</b>	8645	<b>Total PDM Hrs</b>	324.25

BHA #	13	Bit	13	BHA#	13	BHA#	
PDM #	47547375H	Size	6 1/8	Item	Length	Item	#REF!
Drl hrs	17.50	Make	Sec	POWER V	14.55		
Cir hrs.	3.75	Type	FM26437	FILTER SUB	3.00		
Cum. Drl. Hrs	17.50	Depth In	8213	DOUBLE PIN	3.04		
Cum. Cir. Hrs	3.75	Depth Out	8645	MOTOR	25.73		
Bent Sub		Hours		STABILIZER	5.20		
Bent Hous	0	Nozzles (TFA)	3X20	UBHO	3.17		
Depth In	8213	ROP		NMDC	29.64		
Depth Out	8645	T/B/G		FLOW SUB	3.01		
WOB Rotating	10	<b>Mud Type</b>	poly lig	STABILIZER	6.00		
Pad/Stab OD	6"	Weight	9.5	NMFLEX WT	31.10		
GPM	241	Viscosity	38	x/o	1.00		
PSI off BTTM	2140	PV/YP	12/15				
PSI on BTTM	2340	PH	9.5				
Hook Load	140	Water Loss	8.2				
P/U Weight	150	Solid Content	9.00%				
S/O Weight	135	Sand Content	0.20%				
Btm Hole Temp	280	Chlorides	500 PPM	<b>TOTAL =</b>	125.44	<b>TOTAL =</b>	

Time Log			Operation details and comments	BHA Daily Tally			
From	To	Hours		Rotate	Slide	Circulate	Total
0000	530	5.50	Trip in BHA #13	432			432
530	545	0.25	Break Circulation Pattern bit	12.50		3.75	16.25
545	1645	11.00	Drill from 8213' to 8542' Power V Vortex	<b>Motor Inventory</b>			
1645	1715	0.50	Acc surveys and connections	Clean	1	500133	
1715	1730	0.25	Rig Service	Dirty	1	475-47375-H	
1730	1915	1.75	Drill from 8542' to 8645'. Power V Vortex	<b>Directional Charges</b>			
1915	2245	3.50	Circulate and condition hole for lost circulation	Power V Operating		\$8,000	
2245	2400	1.25	POOH due to lost circulation	Insurance Motor,PV,MWD		\$1,950	
				Footage @ \$17.00		\$7,344	
				High temp		\$500	
				<b>Previous Total</b>		\$23,700.00	
				<b>Daily Total</b>		\$17,794.00	
				<b>Cum Total</b>		\$41,494.00	
				Anadrill Representatives Dan Rhine Gehl Mittelsted			
				Operator Representatives CLINT RHODD			
Total Hours=		24.00					



# Daily Report

<b>Report Date:</b> 28-Nov-07					
<b>Company</b>	New Tech Eng.	<b>Job #</b>	40016021	<b>Ftg. Last 24 Hrs</b>	
<b>Rig</b>	Cyclone 20	<b>Report #</b>	34	<b>Last Csg. Set</b>	8178
<b>Well</b>	CPC-17-1ST1	<b>Midn't Depth</b>	8645	<b>Total PDM Hrs</b>	324.25

BHA #	13		Bit	13		BHA#	13	BHA#	
PDM #	47547375H		Size	6 1/8		Item	Length	Item	#REF!
Drl hrs			Make	Sec		POWER V	14.55		
Cir hrs.			Type	FM26437		FILTER SUB	3.00		
Cum. Drl. Hrs	17.50		Depth In	8213		DOUBLE PIN	3.04		
Cum. Cir. Hrs	3.75		Depth Out	8645		MOTOR	25.73		
Bent Sub			Hours			STABILIZER	5.20		
Bent Hous	0		Nozzles (TFA)	3X20		UBHO	3.17		
Depth In	8213		ROP			NMDC	29.64		
Depth Out	8645		T/B/G			FLOW SUB	3.01		
WOB Rotating	10		<b>Mud Type</b>	poly lig		STABILIZER	6.00		
Pad/Stab OD	6"		Weight	9.5		NMFLEX WT	31.10		
GPM	241		Viscosity	38		x/o	1.00		
PSI off BTTM	2140		PV/YP	12/15					
PSI on BTTM	2340		PH	9.5					
Hook Load	140		Water Loss	8.2					
P/U Weight	150		Solid Content	<b>9.00%</b>					
S/O Weight	135		Sand Content	0.20%					
Btm Hole Temp	280		Chlorides	500 PPM		<b>TOTAL =</b>	125.44	<b>TOTAL =</b>	

Time Log			Operation details and comments		BHA Daily Tally			
From	To	Hours			Rotate	Slide	Circulate	Total
0000	600	6.00	Trip out BHA #13	FT				
600	800	2.00	Lay down tools	Hrs				
800	2400	16.00	Wait on trucks for tools					
					<b>Motor Inventory</b>			
					<b>Clean</b>	1	500133	
					<b>Dirty</b>	1	475-47375-H	
					<b>Directional Charges</b>			
					Power V Operating		\$8,000	
					Insurance Motor,PV,MWD		\$1,950	
					High temp		\$500	
					Previous Total		\$41,494.00	
					Daily Total		\$10,450.00	
					Cum Total		\$51,944.00	
					Anadrill Representatives			
					Dan Rhine Gehl Mittelsted			
					Operator Representatives			
					CLINT RHODD			
Total Hours=		24.00						





## BHA Report

<b>Job #</b>	40016021	<b>BHA #:</b>	1	<b>Hole Size :</b>	8 3/4	<b>Motor # :</b>	24X-305		
<b>Customer:</b>	New Tech Eng.	<b>Date In:</b>	10/27	<b>Date Out:</b>	10/28/2007	<b>Motor OD:</b>			
<b>Well:</b>	CPC-17-1ST1	<b>Depth In:</b>	4850	<b>Depth Out:</b>	5078	<b>Tot.Ftge.:</b>	228		
<b>Well Loc.:</b>	Idaho	<b>Slide.Hrs.:</b>		<b>Slide Ft.:</b>		<b>Slide.ROP:</b>	No Slide		
<b>County/St.:</b>	BONNEVILLE	<b>Rot.Hrs.:</b>	9.25	<b>Rot.Ft.:</b>	228	<b>Rot.ROP:</b>	24.65		
<b>Rig :</b>	CYCLONE 20	<b>Drig Hrs.:</b>	9.25	<b>Slide WOB:</b>		<b>Avg.ROP:</b>	24.65		
<b>DD:</b>	DAN RHINE	<b>Circ.Hrs.:</b>	3.00	<b>Rot. WOB:</b>	6	<b>Steering%:</b>			
<b>DD:</b>		<b>Tot D&amp;C Hrs:</b>	12.25	<b>Avg. Tq.:</b>	2500	<b>Rotate % :</b>	100.00%		
<b>MWD:</b>	JAMES BURLESON	<b>R/S Config.:</b>	7/8	<b>Avg RPM :</b>	40	<b>GPM:</b>	425		
<b>MWD:</b>		<b>ABH Set:</b>	ZERO	<b>Incl. In:</b>	3	<b>SPP On:</b>	2050		
<b>Mud Type:</b>	POLY LIG	<b>Mud PV:</b>	11	<b>Mud YP:</b>	19	<b>Incl.Out:</b>	6.62	<b>SPP Off:</b>	1900
<b>Mud Wt.:</b>	10.2	<b>Chloride:</b>	500	<b>BHT F</b>	145	<b>Azimuth In :</b>	271.5	<b>Delta P:</b>	150
<b>Mud Vis.:</b>	37	<b>Sand % :</b>	0.50%	<b>Solid %:</b>	10.00%	<b>Azimuth Out :</b>	259.56	<b>Avg.DLS:</b>	

Item	Description	Vendor	S/N	F/N	Stab. OD	OD	ID	Connection	Length	Cum. Length
1	BIT	GEO D	JX0547			6 3/4	7X13	4 1/2 REG P	0.90	0.90
2	28 RESTRICT POWER V	SLB	CU683		8 5/8	6.75		4 1/2 R B 4 1/2 IFB	13.47	14.37
3	FILTER SUB	SLB	ANA229			6.5	3.19	4 1/2 IF P 4 1/2 IFB	3.03	17.40
4	DOUBLE PIN	SLB	SD103106			6.75	2.25	4 1/2 IF P 4 1/2 IF P	1.91	19.31
5	MOTOR	SLB	675-24X-305	1.3	8 5/8			4 1/2 IFB 4 1/2 R B	26.11	45.42
6	STAB	STAB	SD19822	2.2	8.5	6 3/4	2 7/8	4 1/2 IFB 4 1/2 IF P	5.83	51.25
7	DOUBLE PIN	SLB	6502369			6 5/8	3 3/4	4 1/2 IF P 4 1/2 IF P	2.59	53.84
8	RIDGED MOUN	SLB	1621-14X					4 1/2 IFB 4 1/2 IFB	30.57	84.41
9	NMDC	STAB	SD40497			7	2 13/16	4 1/2 IF P 4 1/2 IF B	31.05	115.46
10	NMDC	STAB	SD37974			6 3/4	2 13/16	4 1/2 IF P 4 1/2 IF B	31.22	146.68
11	DC	CYC						4 1/2 IF P 4 1/2 IF B	338.22	484.90
12	JARS	CYC						4 1/2 IF P 4 1/2 IF B	32.25	517.15

<b>Total Revolutions:</b>		<b>Mtr. Ratio:</b>	rev/gln	<b>Total BHA Length =</b>	517.15		
<b>BHA Weights :</b>		<b>Wt in Air =</b>	51,700 lb	<b>Wt in Mud =</b>	25,000 lb	<b>Wt below Jars =</b>	28,000 lb
<b>BHA Expected Behavior</b>	MAINTAIN ZERO INC.						
<b>BHA Actual Behavior</b>	Would not sidetrack out of old hole						
<b>Total Bit Revolutions:</b>							
<b>Comments / Reason for Trip</b>		Change bha run new plugs					
<b>Failure? Y or N</b>	N						
<b>Bit Grade</b>	Inner/Outer/Dull Char./Location/Brng/Gage/Other/Reason Pulled			1-1-NO-X-I-NO-BHA			



### BHA Report

<b>Job #</b>	40016021	<b>BHA #:</b>	2	<b>Hole Size :</b>	8 3/4	<b>Motor # :</b>	675-67514
<b>Customer:</b>	New Tech Eng.	<b>Date In:</b>	11/2	<b>Date Out:</b>	11/3/2007	<b>Motor OD:</b>	6 3/4
<b>Well:</b>	CPC-17-1ST1	<b>Depth In:</b>	4400	<b>Depth Out:</b>	4466	<b>Tot.Ftge.:</b>	66
<b>Well Loc.:</b>	Idaho	<b>Slide.Hrs.:</b>	16.00	<b>Slide Ft.:</b>	40	<b>Slide.ROP:</b>	2.50
<b>County/St.:</b>	BONNEVILLE	<b>Rot.Hrs.:</b>	8.00	<b>Rot.Ft.:</b>	26	<b>Rot.ROP:</b>	3.25
<b>Rig :</b>	CYCLONE 20	<b>Drig Hrs.:</b>	16.00	<b>Slide WOB:</b>	25	<b>Avg.ROP:</b>	4.13
<b>DD:</b>	DAN RHINE	<b>Circ.Hrs.:</b>		<b>Rot. WOB:</b>	20	<b>Steering%:</b>	60.61%
<b>DD:</b>		<b>Tot D&amp;C Hrs:</b>	24.00	<b>Avg. Tq.:</b>	3000	<b>Rotate % :</b>	39.39%
<b>MWD:</b>	JAMES BURLESON	<b>R/S Config.:</b>	7/8	<b>Avg RPM :</b>	35	<b>GPM:</b>	450
<b>MWD:</b>		<b>ABH Set:</b>	2.2	<b>Incl. In:</b>	3.25	<b>SPP On:</b>	1500
<b>Mud Type:</b>	poly lig	<b>Mud PV:</b>	20	<b>Mud YP:</b>	25	<b>Incl.Out:</b>	2.67
<b>Mud Wt.:</b>	10.1	<b>Chloride:</b>	600	<b>BHT F</b>	134	<b>Azimuth In :</b>	277.71
<b>Mud Vis.:</b>	40	<b>Sand % :</b>	0.50%	<b>Solid %:</b>	10.00%	<b>Azimuth Out :</b>	264
						<b>Avg.DLS:</b>	

Item	Description	Vendor	S/N	F/N	Stab. OD	OD	ID	Connection	Length	Cum. Length
1	14,15,15 BIT	ST	PG6999			8 3/4		4 1/2 REGP	0.90	0.90
2	2.2 FIX Motor	NOI	675-67514	1.25		6.75		4 1/2 RB 4 1/2 IF B	27.93	28.83
3	Dp sub	SLB	650-2369			6 5/8	2.81	4 1/2 IFP 4 1/2 IFP	2.59	31.42
4	RIDGED MOUN	SLB	1621-14X			6.5	3.5	4/1/2IFB 4/1/2IFB	30.57	61.99
5	NMDC	SLB	SD40497			7	2.81	4 1/2 IFP 4/1/2IFB	31.05	93.04
6	NMDC	SLB	SD37974			6 3/4	2.81	4 1/2 IFP 4/1/2IFB	31.22	124.26
7	9 DC	CYC						4 1/2 IF P 4 1/2 IF B	276.86	401.12
8	JARS	CYC						4 1/2 IF P 4 1/2 IF B	32.25	433.37
9	3 DC								91.76	525.13

<b>Total Revolutions:</b>		<b>Mtr. Ratio:</b>	rev/gln	<b>Total BHA Length =</b>	525.13
<b>BHA Weights :</b>	Wt in Air = 51,700 lb	Wt in Mud =	25,000 lb	Wt below Jars =	28,000 lb

<b>BHA Expected Behavior</b>	15 deg dog leg drop
------------------------------	---------------------

<b>BHA Actual Behavior</b>	Did not drop. Only 1/2 deg in 25' slide
----------------------------	---

<b>Total Bit Revolutions:</b>	
-------------------------------	--

<b>Comments / Reason for Trip</b>	Higher angle on motor bit change
-----------------------------------	----------------------------------

<b>Failure? Y or N</b>	N
------------------------	---

<b>Bit Grade</b>	Inner/Outer/Dull Char./Location/Brng/Gage/Other/Reason Pulled	Used bit---- 3-3-fc-s-e-ct-bit
------------------	---	--------------------------------



## BHA Report

<b>Job #</b>	40016021	<b>BHA #:</b>	<b>3</b>	<b>Hole Size :</b>	8 3/4	<b>Motor # :</b>	FT65002
<b>Customer:</b>	New Tech Eng.	<b>Date In:</b>	11/3	<b>Date Out:</b>	11/4/2007	<b>Motor OD:</b>	6 3/4
<b>Well:</b>	CPC-17-1ST1	<b>Depth In:</b>	4466	<b>Depth Out:</b>	4490	<b>Tot.Ftge.:</b>	24
<b>Well Loc.:</b>	Idaho	<b>Slide.Hrs.:</b>	2.50	<b>Slide Ft.:</b>	24	<b>Slide.ROP:</b>	9.60
<b>County/St.:</b>	BONNEVILLE	<b>Rot.Hrs.:</b>		<b>Rot.Ft.:</b>		<b>Rot.ROP:</b>	
<b>Rig :</b>	CYCLONE 20	<b>Drig Hrs.:</b>	2.50	<b>Slide WOB:</b>	20	<b>Avg.ROP:</b>	9.60
<b>DD:</b>	DAN RHINE	<b>Circ.Hrs.:</b>	1.00	<b>Rot. WOB:</b>		<b>Steering%:</b>	100.00%
<b>DD:</b>		<b>Tot D&amp;C Hrs:</b>	3.50	<b>Avg. Tq.:</b>		<b>Rotate % :</b>	
<b>MWD:</b>	JAMES BURLESON	<b>R/S Config.:</b>	8/9	<b>Avg RPM :</b>		<b>GPM:</b>	390
<b>MWD:</b>		<b>ABH Set:</b>	2.83	<b>Incl. In:</b>	2.67	<b>SPP On:</b>	1500
<b>Mud Type:</b>	poly lig	<b>Mud PV:</b>	20	<b>Mud YP:</b>	25	<b>Incl.Out:</b>	2.04
<b>Mud Wt.:</b>	10.1	<b>Chloride:</b>	600	<b>BHT F</b>	197	<b>Azimuth In :</b>	264.41
<b>Mud Vis.:</b>	40	<b>Sand % :</b>	0.50%	<b>Solid %:</b>	10.00%	<b>Azimuth Out :</b>	265
						<b>Avg.DLS:</b>	

Item	Description	Vendor	S/N	F/N	Stab. OD	OD	ID	Connection	Length	Cum. Length
1	15,15,16 Bit	ST	PH0994			8 3/4		4 1/2 REG P	0.90	0.90
2	.27 REV/GAL MOTOR	RENTAL	FT65002	3.16	7 1/4			4 1/2 RB 4 1/2 XH B	24.80	25.70
3	X/O	NAT	XXXX			6.5	2.81	4 1/2 XH P 4 1/2 IF B	3.16	28.86
4	Dp sub	SLB	650-2369			6 5/8	2.81	4 1/2 IF P 4 1/2 IF P	2.59	31.45
5	RIDGED MOUN	SLB	1621-14X			6.5	3.5	4 1/2 IF B 4 1/2 IF B	30.57	62.02
6	NMDC	SLB	SD40497			7	2.81	4 1/2 IF P 4 1/2 IF B	31.05	93.07
7	NMDC	SLB	SD37974			6 3/4	2.81	4 1/2 IF P 4 1/2 IF B	31.22	124.29
8	9 DC	CYC						4 1/2 IF P 4 1/2 IF B	276.86	401.15
9	JARS	CYC						4 1/2 IF P 4 1/2 IF B	32.25	433.40
10	3 DC								91.76	525.16

<b>Total Revolutions:</b>		<b>Mtr. Ratio:</b>	rev/gln	<b>Total BHA Length =</b>	<b>525.16</b>
<b>BHA Weights :</b>	Wt in Air = 51,700 lb	Wt in Mud =	25,000 lb	Wt below Jars =	28,000 lb

**BHA Expected Behavior**

**BHA Actual Behavior** | DRILLED 7 FOOT HOUR

**Total Bit Revolutions:**

**Comments / Reason for Trip** | CHANGE TO POWER V

**Failure? Y or N** | **N**

**Bit Grade** | Inner/Outer/Dull Char./Location/Brng/Gage/Other/Reason Pulled | 1-1-NO-E-I-NO-BHA





## BHA Report

<b>Job #</b>	40016021	<b>BHA #:</b>	<b>4</b>	<b>Hole Size :</b>	8 3/4	<b>Motor # :</b>	675-24X-305		
<b>Customer:</b>	New Tech Eng.	<b>Date In:</b>	11/4	<b>Date Out:</b>	11/4/2007	<b>Motor OD:</b>			
<b>Well:</b>	CPC-17-1ST1	<b>Depth In:</b>	4490	<b>Depth Out:</b>	4490	<b>Tot.Ftge.:</b>			
<b>Well Loc.:</b>	Idaho	<b>Slide.Hrs.:</b>		<b>Slide Ft.:</b>		<b>Slide.ROP:</b>	#VALUE!		
<b>County/St.:</b>	BONNEVILLE	<b>Rot.Hrs.:</b>		<b>Rot.Ft.:</b>		<b>Rot.ROP:</b>			
<b>Rig :</b>	CYCLONE 20	<b>Drig Hrs.:</b>	0	<b>Slide WOB:</b>		<b>Avg.ROP:</b>	#DIV/0!		
<b>DD:</b>	DAN RHINE	<b>Circ.Hrs.:</b>	0	<b>Rot. WOB:</b>		<b>Steering%:</b>	#VALUE!		
<b>DD:</b>		<b>Tot D&amp;C Hrs:</b>		<b>Avg. Tq.:</b>		<b>Rotate % :</b>	#DIV/0!		
<b>MWD:</b>	JAMES BURLESON	<b>R/S Config.:</b>	7/8	<b>Avg RPM :</b>		<b>GPM:</b>			
<b>MWD:</b>		<b>ABH Set:</b>	0	<b>Incl. In:</b>	2	<b>SPP On:</b>			
<b>Mud Type:</b>	poly lig	<b>Mud PV:</b>	16	<b>Mud YP:</b>	20	<b>Incl.Out:</b>	2	<b>SPP Off:</b>	
<b>Mud Wt.:</b>	10.1	<b>Chloride:</b>	500	<b>BHT F</b>	148	<b>Azimuth In :</b>	265	<b>Delta P:</b>	
<b>Mud Vis.:</b>	38	<b>Sand % :</b>	0.00%	<b>Solid %:</b>	9.00%	<b>Azimuth Out :</b>	265	<b>Avg.DLS:</b>	

Item	Description	Vendor	S/N	F/N	Stab. OD	OD	ID	Connection	Length	Cum. Length
1	BIT	GEO D	JX0547			6 3/4	7X13	4 1/2 REG P	0.90	0.90
2	28 RESTRICT POWER V	SLB	CU683		8 5/8	6.75		4 1/2 R B 4 1/2 IFB	13.47	14.37
3	FILTER SUB	SLB	ANA229			6.5	3.19	4 1/2 IF P 4 1/2 IFB	3.03	17.40
4	DOUBLE PIN	SLB	SD103106			6.75	2.25	4 1/2 IF P 4 1/2 IF P	1.91	19.31
5	MOTOR	SLB	675-24X-305	1.3	8 5/8			4 1/2 IFB 4 1/2 R B	26.11	45.42
6	STAB	STAB	SD19822	2.2	8.5	6 3/4	2 7/8	4 1/2 IFB 4 1/2 IF P	5.83	51.25
7	DOUBLE PIN	SLB	6502369			6 5/8	3 3/4	4 1/2 IF P 4 1/2 IF P	2.59	53.84
8	RIDGED MOUN	SLB	1621-14X					4 1/2 IFB 4 1/2 IFB	30.57	84.41
9	NMDC	STAB	SD40497			7	2 13/16	4 1/2 IF P 4 1/2 IF B	31.05	115.46
10	NMDC	STAB	SD37974			6 3/4	2 13/16	4 1/2 IF P 4 1/2 IF B	31.22	146.68
11	9 DC	CYC						4 1/2 IF P 4 1/2 IF B	276.86	423.54
12	JARS	CYC						4 1/2 IF P 4 1/2 IF B	32.25	455.79
13	3 DC								91.76	547.55

<b>Total Revolutions:</b>		<b>Mtr. Ratio:</b>	rev/gln	<b>Total BHA Length =</b>	<b>547.55</b>
<b>BHA Weights :</b>	<b>Wt in Air =</b> 51,700 lb	<b>Wt in Mud =</b> 25,000 lb		<b>Wt below Jars =</b> 28,000 lb	
<b>BHA Expected Behavior</b>	THIS BHA DID NOT GET TO BOTTOM. IT PLUGGED AT 4300'				
<b>BHA Actual Behavior</b>	Plugged jets prior to getting to bottom(4300)				
<b>Total Bit Revolutions:</b>					
<b>Comments / Reason for Trip</b>	Unplug bit AND MWD POWER V ALL SO FAILED DUE TO CEMENT AND CUTTINGS				
<b>Failure? Y or N</b>	N				
<b>Bit Grade</b>	Inner/Outer/Dull Char./Location/Brng/Gage/Other/Reason Pulled			1-1-NO-X-I-NO-BHA	



## BHA Report

<b>Job #</b>	40016021	<b>BHA #:</b>	5	<b>Hole Size :</b>	8 3/4	<b>Motor # :</b>	675-24x-305		
<b>Customer:</b>	New Tech Eng.	<b>Date In:</b>	11/4	<b>Date Out:</b>	11/6/2007	<b>Motor OD:</b>	6 3/4		
<b>Well:</b>	CPC-17-1ST1	<b>Depth In:</b>	4490	<b>Depth Out:</b>	4672	<b>Tot.Ftge.:</b>	182		
<b>Well Loc.:</b>	Idaho	<b>Slide.Hrs.:</b>		<b>Slide Ft.:</b>		<b>Slide.ROP:</b>	No Slide		
<b>County/St.:</b>	BONNEVILLE	<b>Rot.Hrs.:</b>	16.00	<b>Rot.Ft.:</b>	182	<b>Rot.ROP:</b>	11.38		
<b>Rig :</b>	CYCLONE 20	<b>Drig Hrs.:</b>	16.00	<b>Slide WOB:</b>		<b>Avg.ROP:</b>	11.38		
<b>DD:</b>	DAN RHINE	<b>Circ.Hrs.:</b>	6.00	<b>Rot. WOB:</b>	16	<b>Steering%:</b>			
<b>DD:</b>		<b>Tot D&amp;C Hrs:</b>	22.00	<b>Avg. Tq.:</b>	1500	<b>Rotate % :</b>	100.00%		
<b>MWD:</b>	Gehl Mittelsted	<b>R/S Config.:</b>	7/8	<b>Avg RPM :</b>	39	<b>GPM:</b>	427		
<b>MWD:</b>		<b>ABH Set:</b>	0	<b>Incl. In:</b>	2	<b>SPP On:</b>	2000		
<b>Mud Type:</b>	poly lig	<b>Mud PV:</b>	15	<b>Mud YP:</b>	23	<b>Incl.Out:</b>	0.2	<b>SPP Off:</b>	1830
<b>Mud Wt.:</b>	10	<b>Chloride:</b>	500	<b>BHT F</b>	145	<b>Azimuth In :</b>	90	<b>Delta P:</b>	170
<b>Mud Vis.:</b>	40	<b>Sand % :</b>	try	<b>Solid %:</b>	10.00%	<b>Azimuth Out :</b>	90	<b>Avg.DLS:</b>	

Item	Description	Vendor	S/N	F/N	Stab. OD	OD	ID	Connection	Length	Cum. Length
1	5x12,2x11 BIT	GEO D	JX0547			6 3/4		4 1/2 REG P	0.90	0.90
2	28 RESTRICT POWER V	SLB	CU1172		8 5/8	6.75		4 1/2 R B 4 1/2 IFB	13.30	14.20
3	FILTER SUB	SLB	ANA229			6.5	3.19	4 1/2 IF P 4 1/2 IFB	3.03	17.23
4	DOUBLE PIN	SLB	SD103106			6.75	2.25	4 1/2 IF P 4 1/2 IF P	1.91	19.14
5	MOTOR	SLB	675 24-X-305	1.3	8 5/8			4 1/2 IFB 4 1/2 R B	26.11	45.25
6	STAB	STAB	SD19822	2.2	8.5	6 3/4	2 7/8	4 1/2 IFB 4 1/2 IF P	5.83	51.08
7	UBHO	SLB	2323					4 1/2 IFB 4 1/2 IFB	2.91	53.99
8	NMDC	STAB	SD40497			7	2 13/16	4 1/2 IF P 4 1/2 IF B	31.05	85.04
9	FLOW SUB	SLB	6503006			7	2 13/16	4 1/2 IF P 4 1/2 IF B	3.00	88.04
10	NMDC	STAB	SD37974			6 3/4	2 13/16	4 1/2 IF P 4 1/2 IF B	31.22	119.26
11	9 DC	CYC						4 1/2 IF P 4 1/2 IF B	276.86	396.12
12	JARS	CYC						4 1/2 IF P 4 1/2 IF B	32.25	428.37
13	3 DC							4 1/2 IF P 4 1/2 IF B	91.76	520.13

<b>Total Revolutions:</b>		<b>Mtr. Ratio:</b>	rev/gln	<b>Total BHA Length =</b>	520.13
<b>BHA Weights :</b>	Wt in Air = 51,700 lb	Wt in Mud =	25,000 lb	Wt below Jars =	28,000 lb

**BHA Expected Behavior**

**BHA Actual Behavior**

**Total Bit Revolutions:**

**Comments / Reason for Trip** Bit was ringed out. This is the reason for the slow pen rate. Formation is hard.

**Failure? Y or N** N

**Bit Grade** Inner/Outer/Dull Char./Location/Brng/Gage/Other/Reason Pulled 3-3-BT-G-RO-PR



## BHA Report

<b>Job #</b>	40016021	<b>BHA #:</b>	<b>6</b>	<b>Hole Size :</b>	8 3/4	<b>Motor # :</b>	67524X305		
<b>Customer:</b>	New Tech Eng.	<b>Date In:</b>	11/6	<b>Date Out:</b>	11/9/2007	<b>Motor OD:</b>	8 3/4		
<b>Well:</b>	CPC-17-1ST1	<b>Depth In:</b>	4672	<b>Depth Out:</b>	6257	<b>Tot.Ftge.:</b>	1585		
<b>Well Loc.:</b>	Idaho	<b>Slide.Hrs.:</b>		<b>Slide Ft.:</b>		<b>Slide.ROP:</b>	No Slide		
<b>County/St.:</b>	BONNEVILLE	<b>Rot.Hrs.:</b>	46.25	<b>Rot.Ft.:</b>	1585	<b>Rot.ROP:</b>	34.27		
<b>Rig :</b>	CYCLONE 20	<b>Drig Hrs.:</b>	46.25	<b>Slide WOB:</b>		<b>Avg.ROP:</b>	34.27		
<b>DD:</b>	DAN RHINE	<b>Circ.Hrs.:</b>	1.75	<b>Rot. WOB:</b>	20	<b>Steering%:</b>			
<b>DD:</b>		<b>Tot D&amp;C Hrs:</b>	48.00	<b>Avg. Tq.:</b>	1500	<b>Rotate % :</b>	100.00%		
<b>MWD:</b>	Gehl Mittelsted	<b>R/S Config.:</b>	7/8	<b>Avg RPM :</b>	39	<b>GPM:</b>	420		
<b>MWD:</b>		<b>ABH Set:</b>	0	<b>Incl. In:</b>	0.2	<b>SPP On:</b>	1650		
<b>Mud Type:</b>	POLY LIG	<b>Mud PV:</b>	15	<b>Mud YP:</b>	11	<b>Incl.Out:</b>	0.3	<b>SPP Off:</b>	1475
<b>Mud Wt.:</b>	9.5	<b>Chloride:</b>	500	<b>BHT F</b>	147	<b>Azimuth In :</b>	90	<b>Delta P:</b>	175
<b>Mud Vis.:</b>	38	<b>Sand % :</b>	TR	<b>Solid %:</b>	10.00%	<b>Azimuth Out :</b>	57	<b>Avg.DLS:</b>	0.2

Item	Description	Vendor	S/N	F/N	Stab. OD	OD	ID	Connection	Length	Cum. Length
1	3x12,3x13 BIT MI 616	GEO D	JX6612			6 3/4		4 1/2 REG P	0.90	0.90
2	28 RESTRICT POWER V	SLB	CU1172		8 5/8	6.75		4 1/2 R B 4 1/2 IFB	13.30	14.20
3	FILTER SUB	SLB	ANA229			6.5	3.19	4 1/2 IF P 4 1/2 IFB	3.03	17.23
4	DOUBLE PIN	SLB	SD103106			6.75	2.25	4 1/2 IF P 4 1/2 R P	1.91	19.14
5	MOTOR	SLB	675 24-X-305	1.3	8 5/8			4 1/2 RB 4 1/2 IF B	26.11	45.25
6	STAB	STAB	SD19822	2.2	8.5	6 3/4	2 7/8	4 1/2 IFB 4 1/2 IF P	5.83	51.08
7	UBHO	SLB	2323					4 1/2 IFB 4 1/2 IFB	2.91	53.99
8	NMDC	STAB	SD40497			7	2 13/16	4 1/2 IF P 4 1/2 IF B	31.05	85.04
9	FLOW SUB	SLB	6503006			7	2 13/16	4 1/2 IF P 4 1/2 IF B	3.00	88.04
10	NMDC	STAB	SD37974			6 3/4	2 13/16	4 1/2 IF P 4 1/2 IF B	31.22	119.26
11	9 DC	CYC						4 1/2 IF P 4 1/2 IF B	276.86	396.12
12	JARS	CYC						4 1/2 IF P 4 1/2 IF B	32.25	428.37
13	3 DC							4 1/2 IF P 4 1/2 IF B	91.76	520.13

<b>Total Revolutions:</b>		<b>Mtr. Ratio:</b>	rev/gln	<b>Total BHA Length =</b>	<b>520.13</b>
<b>BHA Weights :</b>		<b>Wt in Air =</b>	51,700 lb	<b>Wt in Mud =</b>	25,000 lb
				<b>Wt below Jars =</b>	28,000 lb
<b>BHA Expected Behavior</b>	HOLD ZERO				
<b>BHA Actual Behavior</b>	HELD ZERO				
<b>Total Bit Revolutions: 326340</b>					
<b>Comments / Reason for Trip</b>		Laid out at Co. man request for a fresh motor This motor was used in runs 1,4,5,6			
<b>Failure? Y or N</b>	<b>N</b>	total hours were 82.25			
<b>Bit Grade</b>	Inner/Outer/Dull Char./Location/Brng/Gage/Other/Reason Pulled			2-2-CT-T-I-BT-PR	



## BHA Report

<b>Job #</b>	40016021	<b>BHA #:</b>	7	<b>Hole Size :</b>	8 3/4	<b>Motor # :</b>	675-67545		
<b>Customer:</b>	New Tech Eng.	<b>Date In:</b>	11/9	<b>Date Out:</b>	11/11/2007	<b>Motor OD:</b>	6 3/4		
<b>Well:</b>	CPC-17-1ST1	<b>Depth In:</b>	6257	<b>Depth Out:</b>	6853	<b>Tot.Ftge.:</b>	596		
<b>Well Loc.:</b>	Idaho	<b>Slide.Hrs.:</b>		<b>Slide Ft.:</b>		<b>Slide.ROP:</b>	No Slide		
<b>County/St.:</b>	BONNEVILLE	<b>Rot.Hrs.:</b>	43.25	<b>Rot.Ft.:</b>	596	<b>Rot.ROP:</b>	13.78		
<b>Rig :</b>	CYCLONE 20	<b>Drig Hrs.:</b>	43.25	<b>Slide WOB:</b>		<b>Avg.ROP:</b>	13.78		
<b>DD:</b>	DAN RHINE	<b>Circ.Hrs.:</b>	0.25	<b>Rot. WOB:</b>	32	<b>Steering%:</b>			
<b>DD:</b>		<b>Tot D&amp;C Hrs:</b>	43.50	<b>Avg. Tq.:</b>	125	<b>Rotate % :</b>	100.00%		
<b>MWD:</b>	Gehl Mittelsted	<b>R/S Config.:</b>	7/8	<b>Avg RPM :</b>	39	<b>GPM:</b>	415		
<b>MWD:</b>		<b>ABH Set:</b>	0	<b>Incl. In:</b>	0.3	<b>SPP On:</b>	1690		
<b>Mud Type:</b>	poly lig	<b>Mud PV:</b>	14	<b>Mud YP:</b>	11	<b>Incl.Out:</b>	0.42	<b>SPP Off:</b>	1540
<b>Mud Wt.:</b>	9.5	<b>Chloride:</b>	500	<b>BHT F</b>	182	<b>Azimuth In :</b>	57	<b>Delta P:</b>	150
<b>Mud Vis.:</b>	38	<b>Sand % :</b>	0.20%	<b>Solid %:</b>	8.00%	<b>Azimuth Out :</b>	19.34	<b>Avg.DLS:</b>	

Item	Description	Vendor	S/N	F/N	Stab. OD	OD	ID	Connection	Length	Cum. Length
1	15.6 ,16,18 BIT FHI23VPS	GEO D	PH0994			8 3/4		4 1/2 REG P	0.90	0.90
2	28 RESTRICT POWER V	SLB	BU49719 X5R 67		8 5/8	6.75		4 1/2 R B 4 1/2 IFB	10.00	10.90
3	FILTER SUB	SLB	ANA229			6.5	3.19	4 1/2 IF P 4 1/2 IFB	3.03	13.93
4	DOUBLE PIN	SLB	SD103106			6.75	2.25	4 1/2 IF P 4 1/2 R P	1.91	15.84
5	MOTOR	SLB	675 67545	1.3	8 5/8			4 1/2 RB 4 1/2 IF B	26.46	42.30
6	STAB	STAB	SD19822	2.2	8 5/8	6 3/4	2 7/8	4 1/2 IFB 4 1/2 IF P	5.83	48.13
7	UBHO	SLB	2323					4 1/2 IFB 4 1/2 IFB	2.91	51.04
8	NMDC	STAB	SD40497			7	2 13/16	4 1/2 IF P 4 1/2 IF B	31.05	82.09
9	FLOW SUB	SLB	6503006			7	2 13/16	4 1/2 IF P 4 1/2 IF B	3.00	85.09
10	NMDC	STAB	SD37974			6 3/4	2 13/16	4 1/2 IF P 4 1/2 IF B	31.22	116.31
11	9 DC	CYC						4 1/2 IF P 4 1/2 IF B	276.86	393.17
12	JARS	CYC						4 1/2 IF P 4 1/2 IF B	32.25	425.42
13	3 DC							4 1/2 IF P 4 1/2 IF B	91.76	517.18

<b>Total Revolutions:</b>		<b>Mtr. Ratio:</b>	rev/gln	<b>Total BHA Length =</b>	517.18
<b>BHA Weights :</b>	Wt in Air = 51,700 lb	Wt in Mud =	25,000 lb	Wt below Jars =	28,000 lb
<b>BHA Expected Behavior</b>	HOLD ZERO				
<b>BHA Actual Behavior</b>	BUILT TO .42 ON LAST SURVEY SEALS WERE GONE ON Power V				
<b>Total Bit Revolutions:</b>	441150				
<b>Comments / Reason for Trip</b>					
<b>Failure? Y or N</b>	N				
<b>Bit Grade</b>	Inner/Outer/Dull Char./Location/Brng/Gage/Other/Reason Pulled			4-3-BT-A-1/8-MT-PR	



## BHA Report

<b>Job #</b>	40016021	<b>BHA #:</b>	<b>8</b>	<b>Hole Size :</b>	8 3/4	<b>Motor # :</b>	67567545		
<b>Customer:</b>	New Tech Eng.	<b>Date In:</b>	11/11	<b>Date Out:</b>	11/13/2007	<b>Motor OD:</b>	6 3/4		
<b>Well:</b>	CPC-17-1ST1	<b>Depth In:</b>	6853	<b>Depth Out:</b>	7143	<b>Tot.Ftge.:</b>	290		
<b>Well Loc.:</b>	Idaho	<b>Slide.Hrs.:</b>		<b>Slide Ft.:</b>		<b>Slide.ROP:</b>	No Slide		
<b>County/St.:</b>	BONNEVILLE	<b>Rot.Hrs.:</b>	32.75	<b>Rot.Ft.:</b>	290	<b>Rot.ROP:</b>	8.85		
<b>Rig :</b>	CYCLONE 20	<b>Drig Hrs.:</b>	32.75	<b>Slide WOB:</b>		<b>Avg.ROP:</b>	8.85		
<b>DD:</b>	DAN RHINE	<b>Circ.Hrs.:</b>	2.25	<b>Rot. WOB:</b>	33000	<b>Steering%:</b>			
<b>DD:</b>		<b>Tot D&amp;C Hrs:</b>	35.00	<b>Avg. Tq.:</b>	150	<b>Rotate % :</b>	100.00%		
<b>MWD:</b>	Gehl Mittelsted	<b>R/S Config.:</b>	7/8	<b>Avg RPM :</b>	39	<b>GPM:</b>	406		
<b>MWD:</b>		<b>ABH Set:</b>	ZERO	<b>Incl. In:</b>	0.1	<b>SPP On:</b>	1890		
<b>Mud Type:</b>	POLY LIG	<b>Mud PV:</b>	10	<b>Mud YP:</b>	16	<b>Incl.Out:</b>	0.1	<b>SPP Off:</b>	1600
<b>Mud Wt.:</b>	9.5	<b>Chloride:</b>	500	<b>BHT F</b>	185	<b>Azimuth In :</b>	60	<b>Delta P:</b>	290
<b>Mud Vis.:</b>	37	<b>Sand % :</b>	0.25%	<b>Solid %:</b>	9.00%	<b>Azimuth Out :</b>	42	<b>Avg.DLS:</b>	

Item	Description	Vendor	S/N	F/N	Stab. OD	OD	ID	Connection	Length	Cum. Length
1	16,16,16 BIT XS38S	Security	10806181			8 3/4		4 1/2 REG P	0.90	0.90
2	28 RESTRICT POWER V	SLB	BU58610 X5R 66		8 5/8	6.75		4 1/2 R B 4 1/2 IFB	10.03	10.93
3	FILTER SUB	SLB	714			6 13/16	3.50	4 1/2 IF P 4 1/2 IFB	3.12	14.05
4	DOUBLE PIN	SLB	SD103106			6.75	2.25	4 1/2 IF P 4 1/2 R P	1.91	15.96
5	MOTOR	SLB	675 67545	1.3	8 5/8			4 1/2 RB 4 1/2 IF B	26.46	42.42
6	STAB	STAB	SD19822	2.2	8 5/8	6 3/4	2 7/8	4 1/2 IFB 4 1/2 IF P	5.83	48.25
7	UBHO	SLB	2323					4 1/2 IFB 4 1/2 IFB	2.91	51.16
8	NMDC	STAB	SD40497			7	2 13/16	4 1/2 IF P 4 1/2 IF B	31.05	82.21
9	FLOW SUB	SLB	6503006			7	2 13/16	4 1/2 IF P 4 1/2 IF B	3.00	85.21
10	NMDC	STAB	SD37974			6 3/4	2 13/16	4 1/2 IF P 4 1/2 IF B	31.22	116.43
11	9 DC	CYC						4 1/2 IF P 4 1/2 IF B	276.86	393.29
12	JARS	CYC						4 1/2 IF P 4 1/2 IF B	32.25	425.54
13	3 DC							4 1/2 IF P 4 1/2 IF B	91.76	517.30

<b>Total Revolutions:</b>		<b>Mtr. Ratio:</b>	rev/gln	<b>Total BHA Length =</b>	<b>517.30</b>
<b>BHA Weights :</b>	Wt in Air = 51,700 lb	Wt in Mud =	25,000 lb	Wt below Jars =	28,000 lb
<b>BHA Expected Behavior</b>	HOLD ZERO				
<b>BHA Actual Behavior</b>	HELD ZERO TO .01				
<b>Total Bit Revolutions:</b>	294120				
<b>Comments / Reason for Trip</b>	PEN RATE WAS TOO SLOW. MOTOR WAS OUT OF TOLERANCE ON BRG.				
<b>Failure? Y or N</b>	N	motor was used on run 7&8 totals were 78.5 hours			
<b>Bit Grade</b>	Inner/Outer/Dull Char./Location/Brng/Gage/Other/Reason Pulled			2-2-WT-A-E-1-PR	



## BHA Report

<b>Job #</b>	40016021	<b>BHA #:</b>	<b>9</b>	<b>Hole Size :</b>	8 3/4	<b>Motor # :</b>	67524X220		
<b>Customer:</b>	New Tech Eng.	<b>Date In:</b>	11/13	<b>Date Out:</b>	11/15/2007	<b>Motor OD:</b>	6 3/4		
<b>Well:</b>	CPC-17-1ST1	<b>Depth In:</b>	7143	<b>Depth Out:</b>	7394	<b>Tot.Ftge.:</b>	251		
<b>Well Loc.:</b>	Idaho	<b>Slide.Hrs.:</b>		<b>Slide Ft.:</b>		<b>Slide.ROP:</b>	No Slide		
<b>County/St.:</b>	BONNEVILLE	<b>Rot.Hrs.:</b>	23.25	<b>Rot.Ft.:</b>	251	<b>Rot.ROP:</b>	10.80		
<b>Rig :</b>	CYCLONE 20	<b>Drig Hrs.:</b>	23.25	<b>Slide WOB:</b>		<b>Avg.ROP:</b>	10.80		
<b>DD:</b>	DAN RHINE	<b>Circ.Hrs.:</b>	2.25	<b>Rot. WOB:</b>	26	<b>Steering%:</b>			
<b>DD:</b>		<b>Tot D&amp;C Hrs:</b>	25.50	<b>Avg. Tq.:</b>	150	<b>Rotate % :</b>	100.00%		
<b>MWD:</b>	Gehl Mittelsted	<b>R/S Config.:</b>	7/8	<b>Avg RPM :</b>	40	<b>GPM:</b>	430		
<b>MWD:</b>		<b>ABH Set:</b>	0	<b>Incl. In:</b>	0.01	<b>SPP On:</b>	2150		
<b>Mud Type:</b>	poly lig	<b>Mud PV:</b>	12	<b>Mud YP:</b>	15	<b>Incl.Out:</b>	1.77	<b>SPP Off:</b>	1950
<b>Mud Wt.:</b>	9.5	<b>Chloride:</b>	500	<b>BHT F</b>	200	<b>Azimuth In :</b>	42	<b>Delta P:</b>	200
<b>Mud Vis.:</b>	37	<b>Sand % :</b>	0.50%	<b>Solid %:</b>	9.00%	<b>Azimuth Out :</b>	333.65	<b>Avg.DLS:</b>	

Item	Description	Vendor	S/N	F/N	Stab. OD	OD	ID	Connection	Length	Cum. Length
1	7X16 FM3755Z	Security	10793483			8 3/4		4 1/2 REG P	0.90	0.90
2	24 RESTRICT POWER V	SLB	BU58610 X5R 66		8 5/8	6.75		4 1/2 R B 4 1/2 IFB	10.03	10.93
3	FILTER SUB	SLB	714			6 13/16	3.50	4 1/2 IF P 4 1/2 IFB	3.12	14.05
4	DOUBLE PIN	SLB	SD103106			6.75	2.25	4 1/2 IF P 4 1/2 R P	1.91	15.96
5	MOTOR	SLB	675 24X220	1.3	8 5/8			4 1/2 RB 4 1/2 IF B	26.82	42.78
6	STAB	STAB	SD19822	2.2	8 5/8	6 3/4	2 7/8	4 1/2 IFB 4 1/2 IF P	5.83	48.61
7	UBHO	SLB	2323					4 1/2 IFB 4 1/2 IFB	2.91	51.52
8	NMDC	STAB	SD40497			7	2 13/16	4 1/2 IF P 4 1/2 IF B	31.05	82.57
9	FLOW SUB	SLB	6503006			7	2 13/16	4 1/2 IF P 4 1/2 IF B	3.00	85.57
10	NMDC	STAB	SD37974			6 3/4	2 13/16	4 1/2 IF P 4 1/2 IF B	31.22	116.79
11	9 DC	CYC						4 1/2 IF P 4 1/2 IF B	276.86	393.65
12	JARS	CYC						4 1/2 IF P 4 1/2 IF B	32.25	425.90
13	3 DC							4 1/2 IF P 4 1/2 IF B	91.76	517.66

<b>Total Revolutions:</b>		<b>Mtr. Ratio:</b>	rev/gln	<b>Total BHA Length =</b>	<b>517.66</b>
<b>BHA Weights :</b>		<b>Wt in Air =</b>	51,700 lb	<b>Wt in Mud =</b>	25,000 lb
				<b>Wt below Jars =</b>	28,000 lb
<b>BHA Expected Behavior</b>	HOLD ZERO				
<b>BHA Actual Behavior</b>	HELD ZERO UNTIL FAILURE. Went from .1 to 1.77 in 60'				
<b>Total Bit Revolutions:</b>					
<b>Comments / Reason for Trip</b>		POWER V failed after 20 hours on this run. 60.5 hours total on this powerV			
<b>Failure? Y or N</b>	<b>Y</b>	Motor failed to drain properly so as a precaution was changed out			
<b>Bit Grade</b>	Inner/Outer/Dull Char./Location/Brng/Gage/Other/Reason Pulled			1-1-NO-A-X-1-NO-DT	



## BHA Report

<b>Job #</b>	40016021	<b>BHA #:</b>	<b>10</b>	<b>Hole Size :</b>	8 3/4	<b>Motor # :</b>	675-24X305		
<b>Customer:</b>	New Tech Eng.	<b>Date In:</b>	11/15	<b>Date Out:</b>	11/16/2007	<b>Motor OD:</b>	6 3/4		
<b>Well:</b>	CPC-17-1ST1	<b>Depth In:</b>	7394	<b>Depth Out:</b>	7555	<b>Tot.Ftge.:</b>	161		
<b>Well Loc.:</b>	Idaho	<b>Slide.Hrs.:</b>		<b>Slide Ft.:</b>		<b>Slide.ROP:</b>	No Slide		
<b>County/St.:</b>	BONNEVILLE	<b>Rot.Hrs.:</b>	22.00	<b>Rot.Ft.:</b>	161	<b>Rot.ROP:</b>	7.32		
<b>Rig :</b>	CYCLONE 20	<b>Drig Hrs.:</b>	22.00	<b>Slide WOB:</b>		<b>Avg.ROP:</b>	7.32		
<b>DD:</b>	DAN RHINE	<b>Circ.Hrs.:</b>	2.50	<b>Rot. WOB:</b>	25	<b>Steering%:</b>			
<b>DD:</b>		<b>Tot D&amp;C Hrs:</b>	24.50	<b>Avg. Tq.:</b>	150	<b>Rotate % :</b>	100.00%		
<b>MWD:</b>	Gehl Mittelsted	<b>R/S Config.:</b>	7/8	<b>Avg RPM :</b>	40	<b>GPM:</b>	420		
<b>MWD:</b>		<b>ABH Set:</b>	0	<b>Incl. In:</b>	1.77	<b>SPP On:</b>	2100		
<b>Mud Type:</b>	POLY LIG	<b>Mud PV:</b>	12	<b>Mud YP:</b>	19	<b>Incl.Out:</b>	4.99	<b>SPP Off:</b>	1900
<b>Mud Wt.:</b>	9.6	<b>Chloride:</b>	500	<b>BHT F</b>	220	<b>Azimuth In :</b>	333.6	<b>Delta P:</b>	200
<b>Mud Vis.:</b>	41	<b>Sand % :</b>	0.75%	<b>Solid %:</b>	10.00%	<b>Azimuth Out :</b>	344.59	<b>Avg.DLS:</b>	

Item	Description	Vendor	S/N	F/N	Stab. OD	OD	ID	Connection	Length	Cum. Length
1	7X16 FM3755Z	Security	10793483			8 3/4		4 1/2 REG P	0.90	0.90
2	24 RESTRICT POWER V	SLB	BU58610 X5R 013		8 5/8	6.75		4 1/2 R B 4 1/2 IFB	10.01	10.91
3	FILTER SUB	SLB	714			6 13/16	3.50	4 1/2 IF P 4 1/2 IFB	3.12	14.03
4	DOUBLE PIN	SLB	SD103106			6.75	2.25	4 1/2 IF P 4 1/2 R P	1.91	15.94
5	MOTOR	SLB	675 24X305	1.3	8 5/8			4 1/2 RB 4 1/2 IF B	26.66	42.60
6	STAB	STAB	SD19822	2.2	8 5/8	6 3/4	2 7/8	4 1/2 IFB 4 1/2 IF P	5.83	48.43
7	UBHO	SLB	2323					4 1/2 IFB 4 1/2 IFB	2.91	51.34
8	NMDC	STAB	SD40497			7	2 13/16	4 1/2 IF P 4 1/2 IF B	31.05	82.39
9	FLOW SUB	SLB	6503006			7	2 13/16	4 1/2 IF P 4 1/2 IF B	3.00	85.39
10	NMDC	STAB	SD37974			6 3/4	2 13/16	4 1/2 IF P 4 1/2 IF B	31.22	116.61
11	9 DC	CYC						4 1/2 IF P 4 1/2 IF B	276.86	393.47
12	JARS	CYC						4 1/2 IF P 4 1/2 IF B	32.25	425.72
13	3 DC							4 1/2 IF P 4 1/2 IF B	91.76	517.48

<b>Total Revolutions:</b>		<b>Mtr. Ratio:</b>	rev/gln	<b>Total BHA Length =</b>	<b>517.48</b>
<b>BHA Weights :</b>	Wt in Air = 51,700 lb	Wt in Mud =	25,000 lb	Wt below Jars =	28,000 lb

<b>BHA Expected Behavior</b>	
time in 08:30	

<b>BHA Actual Behavior</b>	
----------------------------	--

<b>Total Bit Revolutions:</b>	
-------------------------------	--

<b>Comments / Reason for Trip</b>	Tool was not working after the pressure spike of 300 psi. This was prior to drilling.
<b>Failure? Y or N</b>	Y
	washed out pad very loose. Ready to fall apart

<b>Bit Grade</b>	Inner/Outer/Dull Char./Location/Brng/Gage/Other/Reason Pulled	1-1-NO-A-X-1-NO-DT
------------------	---	--------------------



## BHA Report

<b>Job #</b>	40016021	<b>BHA #:</b>	11	<b>Hole Size :</b>	8 3/4	<b>Motor # :</b>	675-24x305		
<b>Customer:</b>	New Tech Eng.	<b>Date In:</b>	11/16	<b>Date Out:</b>		<b>Motor OD:</b>	6 3/4		
<b>Well:</b>	CPC-17-1ST1	<b>Depth In:</b>	7555	<b>Depth Out:</b>	8213	<b>Tot.Ftge.:</b>	658		
<b>Well Loc.:</b>	Idaho	<b>Slide.Hrs.:</b>		<b>Slide Ft.:</b>		<b>Slide.ROP:</b>	No Slide		
<b>County/St.:</b>	BONNEVILLE	<b>Rot.Hrs.:</b>	71.50	<b>Rot.Ft.:</b>	658	<b>Rot.ROP:</b>	9.20		
<b>Rig :</b>	CYCLONE 20	<b>Drig Hrs.:</b>	71.50	<b>Slide WOB:</b>		<b>Avg.ROP:</b>	9.20		
<b>DD:</b>	DAN RHINE	<b>Circ.Hrs.:</b>	1.00	<b>Rot. WOB:</b>	28	<b>Steering%:</b>			
<b>DD:</b>		<b>Tot D&amp;C Hrs:</b>	72.50	<b>Avg. Tq.:</b>	125	<b>Rotate % :</b>	100.00%		
<b>MWD:</b>	Gehl Mittelsted	<b>R/S Config.:</b>	7/8	<b>Avg RPM :</b>	39	<b>GPM:</b>	406		
<b>MWD:</b>		<b>ABH Set:</b>	0	<b>Incl. In:</b>	4.99	<b>SPP On:</b>	2100		
<b>Mud Type:</b>	POLY LIG	<b>Mud PV:</b>	11	<b>Mud YP:</b>	19	<b>Incl.Out:</b>	1.25	<b>SPP Off:</b>	1950
<b>Mud Wt.:</b>	9.5	<b>Chloride:</b>	500	<b>BHT F</b>	212	<b>Azimuth In :</b>	344	<b>Delta P:</b>	150
<b>Mud Vis.:</b>	38	<b>Sand % :</b>	0.50%	<b>Solid %:</b>	9.50%	<b>Azimuth Out :</b>	41	<b>Avg.DLS:</b>	

Item	Description	Vendor	S/N	F/N	Stab. OD	OD	ID	Connection	Length	Cum. Length
1	3X14 FH40	SMITH	MX9151			8 3/4		4 1/2 REG P	0.90	0.90
2	NO REST. POWER V	SLB	CU682		8 5/8	6.75		4 1/2 R B 4 1/2 IFB	13.46	14.36
3	FILTER SUB	SLB	714			6 13/16	3.50	4 1/2 IF P 4 1/2 IFB	3.12	17.48
4	DOUBLE PIN	SLB	SD103106			6.75	2.25	4 1/2 IF P 4 1/2 R P	1.91	19.39
5	MOTOR	SLB	675 24X305	1.3	8 5/8			4 1/2 RB 4 1/2 IF B	26.66	46.05
6	STAB	STAB	SD19822	2.2	8 5/8	6 3/4	2 7/8	4 1/2 IFB 4 1/2 IF P	5.83	51.88
7	UBHO	SLB	2323					4 1/2 IFB 4 1/2 IFB	2.91	54.79
8	NMDC	STAB	SD40497			7	2 13/16	4 1/2 IF P 4 1/2 IF B	31.05	85.84
9	FLOW SUB	SLB	6503006			7	2 13/16	4 1/2 IF P 4 1/2 IF B	3.00	88.84
10	NMDC	STAB	SD37974			6 3/4	2 13/16	4 1/2 IF P 4 1/2 IF B	31.22	120.06
11	9 DC	CYC						4 1/2 IF P 4 1/2 IF B	276.86	396.92
12	JARS	CYC						4 1/2 IF P 4 1/2 IF B	32.25	429.17
13	3 DC							4 1/2 IF P 4 1/2 IF B	91.76	520.93

<b>Total Revolutions:</b>		<b>Mtr. Ratio:</b>	rev/gln	<b>Total BHA Length =</b>	520.93
<b>BHA Weights :</b>	Wt in Air = 51,700 lb	Wt in Mud =	25,000 lb	Wt below Jars =	28,000 lb

<b>BHA Expected Behavior</b>	
------------------------------	--

<b>BHA Actual Behavior</b>	
----------------------------	--

<b>Total Bit Revolutions:</b>	
-------------------------------	--

<b>Comments / Reason for Trip</b>	
<b>Failure? Y or N</b>	

<b>Bit Grade</b>	Inner/Outer/Dull Char./Location/Brng/Gage/Other/Reason Pulled	3-3-wt-A-F-I-FC-TD
------------------	---	--------------------





## BHA Report

<b>Job #</b>	40016021			<b>BHA #:</b>	12		<b>Hole Size :</b>	6 1/8		<b>Motor # :</b>	
<b>Customer:</b>	New Tech Eng.			<b>Date In:</b>	11/26		<b>Date Out:</b>	11/26/2007		<b>Motor OD:</b>	
<b>Well:</b>	CPC-17-1ST1			<b>Depth In:</b>	8213		<b>Depth Out:</b>	8213		<b>Tot.Ftge.:</b>	
<b>Well Loc.:</b>	Idaho			<b>Slide.Hrs.:</b>			<b>Slide Ft.:</b>			<b>Slide.ROP:</b>	#VALUE!
<b>County/St.:</b>	BONNEVILLE			<b>Rot.Hrs.:</b>			<b>Rot.Ft.:</b>			<b>Rot.ROP:</b>	
<b>Rig :</b>	CYCLONE 20			<b>Drig Hrs.:</b>			<b>Slide WOB:</b>			<b>Avg.ROP:</b>	
<b>DD:</b>	DAN RHINE			<b>Circ.Hrs.:</b>	1.00		<b>Rot. WOB:</b>			<b>Steering%:</b>	#VALUE!
<b>DD:</b>				<b>Tot D&amp;C Hrs:</b>	1.00		<b>Avg. Tq.:</b>			<b>Rotate % :</b>	#DIV/0!
<b>MWD:</b>	Gehl Mittelsted			<b>R/S Config.:</b>			<b>Avg RPM :</b>			<b>GPM:</b>	
<b>MWD:</b>				<b>ABH Set:</b>			<b>Incl. In:</b>			<b>SPP On:</b>	
<b>Mud Type:</b>		<b>Mud PV:</b>		<b>Mud YP:</b>			<b>Incl.Out:</b>			<b>SPP Off:</b>	
<b>Mud Wt.:</b>		<b>Chloride:</b>		<b>BHT F</b>			<b>Azimuth In :</b>			<b>Delta P:</b>	
<b>Mud Vis.:</b>		<b>Sand % :</b>		<b>Solid %:</b>			<b>Azimuth Out :</b>			<b>Avg.DLS:</b>	

Item	Description	Vendor	S/N	F/N	Stab. OD	OD	ID	Connection	Length	Cum. Length
1	3X18 Bit EBXS42	SEC	10747986			6 1/8		3 1/2 REG P	0.75	0.75
2	Bit sub					4 3/4	1 3/4	3 1/2 R B HT 38 B	3.51	4.26
3	DC			2		4 3/4	1 3/4	HT38 P HT 38 B	362.39	366.65
4	13 HWT DP			2		4 3/4	1 3/4	HT38 P HT 38 B	389.75	756.40
5	X/O					4 3/4	1 3/4	HT 38 P 3 1/2 IF B	3.54	759.94
6	JARS			3		4 3/4	1 3/4	3 1/2 IF P 3 1/2 IF B	29.48	789.42
7	X/O					4 3/4	1 3/4	3 1/2 IF P HT 38 B	3.53	792.95
8	9 HWT DP			2		4 3/4	1 3/4	HT38 P HT 38 B	275.85	1068.80

<b>Total Revolutions:</b>			<b>Mtr. Ratio:</b>	rev/gln	<b>Total BHA Length =</b>		<b>1068.80</b>	
<b>BHA Weights :</b>			<b>Wt in Air = 51,700 lb</b>		<b>Wt in Mud = 25,000 lb</b>		<b>Wt below Jars = 28,000 lb</b>	
<b>BHA Expected Behavior</b>		Drill out Cement Flat and shoe						
<b>BHA Actual Behavior</b>								
<b>Total Bit Revolutions:</b>								
<b>Comments / Reason for Trip</b>		CLEAN OUT SHOE TRACK AND CEMENT						
<b>Failure? Y or N</b>		N						
<b>Bit Grade</b>		Inner/Outer/Dull Char./Location/Brng/Gage/Other/Reason Pulled						



## BHA Report

<b>Job #</b>	40016021	<b>BHA #:</b>	13	<b>Hole Size :</b>	6 1/8	<b>Motor # :</b>	47547375-H		
<b>Customer:</b>	New Tech Eng.	<b>Date In:</b>	11/26	<b>Date Out:</b>	11/28/2007	<b>Motor OD:</b>	4 3/4		
<b>Well:</b>	CPC-17-1ST1	<b>Depth In:</b>	8213	<b>Depth Out:</b>	8645	<b>Tot.Ftge.:</b>	432		
<b>Well Loc.:</b>	Idaho	<b>Slide.Hrs.:</b>		<b>Slide Ft.:</b>		<b>Slide.ROP:</b>	No Slide		
<b>County/St.:</b>	BONNEVILLE	<b>Rot.Hrs.:</b>	12.50	<b>Rot.Ft.:</b>	432	<b>Rot.ROP:</b>	34.56		
<b>Rig :</b>	CYCLONE 20	<b>DrIg Hrs.:</b>	12.50	<b>Slide WOB:</b>		<b>Avg.ROP:</b>	34.56		
<b>DD:</b>	DAN RHINE	<b>Circ.Hrs.:</b>	3.75	<b>Rot. WOB:</b>	10	<b>Steering%:</b>			
<b>DD:</b>		<b>Tot D&amp;C Hrs:</b>	16.25	<b>Avg. Tq.:</b>	135	<b>Rotate % :</b>	100.00%		
<b>MWD:</b>	Gehl Mittelsted	<b>R/S Config.:</b>	7/8	<b>Avg RPM :</b>	35	<b>GPM:</b>	240		
<b>MWD:</b>		<b>ABH Set:</b>	0	<b>Incl. In:</b>	1.1	<b>SPP On:</b>	2400		
<b>Mud Type:</b>	POLY LIG	<b>Mud PV:</b>	17	<b>Mud YP:</b>	17	<b>Incl.Out:</b>	0.2	<b>SPP Off:</b>	2200
<b>Mud Wt.:</b>	9.5	<b>Chloride:</b>	600	<b>BHT F</b>	272.3	<b>Azimuth In :</b>	356	<b>Delta P:</b>	200
<b>Mud Vis.:</b>	45	<b>Sand % :</b>	0.50%	<b>Solid %:</b>	10.00%	<b>Azimuth Out :</b>	183	<b>Avg.DLS:</b>	

Item	Description	Vendor	S/N	F/N	Stab. OD	OD	ID	Connection	Length	Cum. Length
1	3X20 Bit FM26437	Sec	10820605			6 1/8		3 1/2 REG P	0.90	0.90
2	18 REST. POWER V	SLB	CU834			4 3/4	3	3 1/2 R B 3 1/2 IFB	14.55	15.45
3	FILTER SUB	SLB	ANA718			4 3/4	2.75	3 1/2 IF P 3 1/2 IFB	3.00	18.45
4	DOUBLE PIN	SLB	4752535			4 3/4	1 1/2	3 1/2 IF P 3 1/2 IFB	3.04	21.49
5	MOTOR	NAT	475-47375H	1.3	6	4 3/4	N/A	3 1/2 IF P 3 1/2 IFB	25.73	47.22
6	STABILIZER	STAB	SD20313	2.2	6	4 3/4	2 1/4	3 1/2 IF P 3 1/2 IFB	5.20	52.42
7	UBHO	SLB	5535-1			4 3/4	2 1/2	3 1/2 IF P 3 1/2 IFB	3.17	55.59
8	NMDC	STAB	37366H	3.1		4 3/4	2 5/8	3 1/2 IF P 3 1/2 IFB	29.64	85.23
9	FLOW SUB	SLB	4752486			4 3/4	2 1/4	3 1/2 IF P 3 1/2 IFB	3.01	88.24
10	STABILIZER	STAB	SD20232		5 7/8	4 3/4	2 1/4	3 1/2 IF P 3 1/2 IFB	6.00	94.24
11	NMFLEX WT	STAB	SD34422	3.1		4 3/4	2 3/8	3 1/2 IF P 3 1/2 IFB	31.10	125.34
12	NMFLEX WT	STAB	SD38704	2.9		4 3/4	2 3/8	3 1/2 IF P 3 1/2 IFB	31.96	157.30
13	X/O	kk						3 1/2 IF P HT38	1.00	158.30

<b>Total Revolutions:</b>		<b>Mtr. Ratio:</b>	rev/gln	<b>Total BHA Length =</b>		<b>158.30</b>	
<b>BHA Weights :</b>		<b>Wt in Air =</b>	51,700 lb	<b>Wt in Mud =</b>	25,000 lb	<b>Wt below Jars =</b>	28,000 lb
<b>BHA Expected Behavior</b>	HOLD INC. TO ZERO						
<b>BHA Actual Behavior</b>	HELD ZERO TO TD						
<b>Total Bit Revolutions:</b>							
<b>Comments / Reason for Trip</b>		LOST CIRCULATION AND TEMP TOO HIGH					
<b>Failure? Y or N</b>	N						
<b>Bit Grade</b>	Inner/Outer/Dull Char./Location/Brng/Gage/Other/Reason Pulled				1-1-CT-S-I-NO-HP		



## Drilling Parameters

Company: New Tech Eng.

Date: 2-Nov thru 27-Nov

Well Name: CPC-17-1ST1

Bit to Survey: 46 Ft.

Co. Rep. : Jason MournsAlways

Page: 1 of 1

Co. Rep. : Clint Rhodd

BHA	Survey Depth	Incl. Degree	Azimuth Degree	Depth From	Depth To	Feet	Drill O/R	Tool Face / RPM	Drill Hrs.	WOB 1000#	PU,SO & ROT WT	Pump SPM	Flow Rate	Pressure OFF/ON	Comments Date
2	4400	3.25	277.71	4400	4420	20	O	90M	9.00	2	147/137/145	91	381	1450	2-Nov
2	4529	0.83	61.08	4420	4427	7	O	90M	4.00	2	147/137/145	91	381	1450	3-Nov
2	4656	0.12	347.91	4427	4453	26	R	28	8.00	2	147/137/145	91	381	1450	3-Nov
2	4939	0.14	272.84	4453	4466	13	O	90M	3.00	2	147/137/145	91	381	1450	3-Nov
3	5253	0.12	152.32	4466	4485	19	O	90M	2.00	2	147/137/145	91	381	1450	4-Nov
3	5724	0.2	248.27	4485	4490	5	O	85M	0.50	2	147/137/145	91	381	1450	4-Nov
5	6007	0.22	120.09	4490	4600	110	R	39	4.00	2	147/137/145	91	381	1450	5-Nov
5	6101	0.2	156.19	4600	4672	72	R	39	12.00	2	147/137/145	91	381	1450	6-Nov
6	6186	0.3	57.61	4672	4696	24	R	39	4.00	2	147/137/145	91	381	1450	6-Nov
6	6288	0.32	313.57	4696	5545	849	R	39	17.00	2	147/137/145	91	381	1450	7-Nov
6	6382	0.27	257.92	5545	5740	195	R	39	4.25	2	147/137/145	91	381	1450	7-Nov
6	6663	0.3	114.63	5740	6257	517	R	39	21.00	2	147/137/145	91	381	1450	8-Nov
7	6759	0.42	19.34	6257	6360	103	R	39	6.25	2	147/137/145	91	381	1450	9-Nov
7	6789	0.1	160.91	6360	6494	134	R	39	5.50	2	147/137/145	91	381	1450	9-Nov
7	7041	0.1	42.03	6494	6547	53	R	39	4.00	2	147/137/145	91	381	1450	10-Nov
7	7104	0.15	63.7	6547	6750	203	R	39	18.50	2	147/137/145	91	381	1450	10-Nov
7	7230	0.13	18.03	6750	6853	103	R	39	9.00	2	147/137/145	91	381	1450	11-Nov
8	7291	0.35	22.19	6853	7057	204	R	39	22.50	2	147/137/145	91	381	1450	12-Nov
8	7323	1.73	333.65	7057	7143	86	R	39	10.25	2	147/137/145	91	381	1450	13-Nov
9	7422	4.8	338.35	7143	7362	219	R	40	20.00	2	147/137/145	91	381	1450	14-Nov
9	7453	4.9	341.85	7362	7394	32	R	40	3.25	2	147/137/145	91	381	1450	14-Nov
10	7484	4.99	344.59	7394	7478	84	R	39	9.50	2	147/137/145	91	381	1450	15-Nov
10	7513	5.01	347.35	7478	7555	77	R	39	12.50	2	147/137/145	91	381	1450	16-Nov
11	7545	5.05	350.55	7555	7710	155	R	39	17.00	2	147/137/145	91	381	1450	17-Nov
11	7575	4.22	349.23	7710	7902	192	R	39	21.25	2	147/137/145	91	381	1450	18-Nov
11	7952	0.31	10.11	7902	7921	19	R	39	2.00	2	147/137/145	91	381	1450	18-Nov
11	7983	0.42	207.5	7921	8140	219	R	39	23.25	2	147/137/145	91	381	1450	19-Nov
11	8013	0.49	294.66	8140	8213	73	R	39	8.00	2	147/137/145	91	381	1450	20-Nov
13	8044	0.25	247.59	8213	8645	432	R	35	12.50	2	147/137/145	91	381	1450	27-Nov
	8076	0.21	41.92												
	8138	1.12	356.32												
	8188	0.86	346.96												

Sliding Data : Footage= 64 Hrs= 18.50 Ft/Hr= 3.46  
 Rotating Data: Footage= 4181 Hrs= 275.50 Ft/Hr= 15.18  
 Anadrill Directional Sup.: Dan Rhine