



**Baker Atlas**



FILE NO: 141758  
 COMPANY: CPC MINERAL, LLC  
 WELL: CPC 17-1  
 FIELD: MILDGAT  
 COUNTY: BONNEVILLE  
 STATE: IDAHO

API NO: 11-019-20011  
 LOCATION: SHL: 705' FML & 2264' FSL  
 SEC 17 TWP 3S RGE 43E  
 OTHER SERVICES: HDIL, XMAC, PLUG, CEMENT

PERMANENT DATUM: G.L. ELEVATION 6413.4 FT  
 LOG MEASURED FROM: K.B. 22 FT ABOVE P.D.  
 DRILL. MEAS. FROM: K.B.  
 ELEVATIONS: KB 6435.4 FT, DF, GL 6413.4 FT

DATE	14-DEC-2007	
RUN	TRIP	3   1
SERVICE ORDER	536433	
DEPTH DRILLER	9428 FT	
DEPTH LOGGER	9400 FT	
BOTTOM LOGGED INTERVAL	9400 FT	
TOP LOGGED INTERVAL	8915 FT	
CASING DRILLER	7 IN @ 8174 FT	
CASING LOGGER	8195 FT	
BIT SIZE	6.125 IN	
TYPE OF FLUID IN HOLE	MBM	
DENSITY	8.5 LB/G	38 S
PH	8.5	15.4 C3
SOURCE OF SAMPLE	FLOWLINE	
RM AT MEAS. TEMP.	1.35 OHM	@ 60 DEGF
RMF AT MEAS. TEMP.	1.25 OHM	@ 60 DEGF
RMC AT MEAS. TEMP.	1.5 OHM	@ 60 DEGF
SOURCE OF RMF	MEASURED	MEASURED
RM AT BHT	0.21 OHM	@ 432 DEGF
TIME SINCE CIRCULATION	13 HOURS	
MAX. RECORDED TEMP.	432 DEGF	
EQUIP. NO.	HL-6685	ROCK SPRGS.
RECORDED BY	PEAUVEY/BUSKER	
WITNESSED BY	RHODD/CLEGG	

IN MAKING INTERPRETATIONS OF LOGS OUR EMPLOYEES WILL GIVE CUSTOMER THE BENEFIT OF THEIR BEST JUDGEMENT. BUT SINCE ALL INTERPRETATIONS ARE OPINIONS BASED ON INFERENCES FROM ELECTRICAL OR OTHER MEASUREMENTS, WE CANNOT, AND WE DO NOT GUARANTEE THE ACCURACY OR CORRECTNESS OF ANY INTERPRETATION. WE SHALL NOT BE LIABLE OR RESPONSIBLE FOR ANY LOSS, COST, DAMAGES, OR EXPENSES WHATSOEVER INCURRED OR SUSTAINED BY THE CUSTOMER RESULTING FROM ANY INTERPRETATION MADE BY ANY OF OUR EMPLOYEES.

**REMARKS**

RUN 3 TRIP 1 : LOG TIED IN WITH BAKER RUN 2 LOG AND LOGGED WITH HIGH TEMP NAUTILUS TOOLS. DOWNHOLE TEMPERATURES REACHED 432.7 DEGS. LACKED 44' FROM GETTING TO TD DUE TO HOLE PROBLEMS. ACOUSTIC QUIT FROM 9192 - 9248' DUE TO HEAT RELATED TOOL PROBLEMS. COULD NOT PERFORM HDIL AFTER LOG DUE TO HEAT RELATED COMMS. REPEAT SECTION WAS TAKEN FROM THE DOWN LOG SO THAT HEAT EXPOSURE WAS KEPT TO A MINIMUM. P.E. IS NOT AVAILABLE WITH THE 2233 DENSITY TOOL.

MATRIX = LIMESTONE  
 RHO M = 2.71 G/CC RHO F = 1.0 G/CC  
 SLOWNESS = 47.6 US/FT.

CUOL COMPUTED USING 4.5" CASING  
 CUOL & BUOL IN CUBIC FEET  
 CALIPER VERIFIED IN CASING

THANKS FOR CHOOSING BAKER ATLAS... THE BEST CHOICE!  
 CREW: PEAUVEY/BUSKER/ADAMS/CROCHET  
 RIG: CYCLONE #20

## EQUIPMENT DATA

RUN	TRIP	TOOL	SERIES NO.	SERIAL NO.	POSITION
3	I	SWUL	3944XD	78035	FREE
3	I	TTRM	3981XA	10084082	FREE
3	I	WTS	3514XB	10042835	FREE
3	I	DSL	1329XA	10041656	FREE
3	I	CN	2447XA	10040679	FREE
3	I	ZDL	2233MA	10129053	DECENT.
3	I	KNJT	3939XA	184391	FREE
3	I	XMAC	1667EA	117153	CENTRALIZED
3	I	XMAC	1678MA	188383	CENTRALIZED
3	I	XMAC	1668BA	188355	CENTRALIZED
3	I	XMAC	1668FA	152718	CENTRALIZED
3	I	HDIL	1515EA/MA	10064833/10067592	STAND-OFF

## MAIN LOG 5"/100FT SCALE (POROSITY)

ECLIPS 5.1i Sep 16, 2005  
 Updates: 1,2,3,33,38,40,42

Sat Dec 15 00:04:18 2007

Pcrplt /main/61

Cplot 9.27

Pdf\_Cpp /main/16

Fileview 5.08

### PARAMETER AND FILTER SUMMARY REPORT

FILE: /data/14175b/N87ba03.prm  
 LOGGING MODE: DEPTH DIRECTION: UP  
 TOP DEPTH: 8335.250 ft BOTTOM DEPTH: 9241.750 ft

#### SYMMETRIC FILTER

MEASUREMENT TYPE	PARAMETER	VALUE	UNITS	INTERVAL (ft)	
SPEED	FILTER ( )	medium ( )		TOP	BOTTOM
	FILTER (.h)	medium ( )		''	''
TENSION	FILTER ( )	medium ( )		''	''
	FILTER (.h)	medium ( )		''	''
CALIPER	FILTER ( )	medium ( )		''	''
	FILTER (.h)	medium ( )		''	''
	FILTER (.i)	medium ( )		''	''
	FILTER ( )	medium ( )		''	''
CN	FILTER ( )	medium ( )		''	''
	FILTER (.h)	medium ( )		''	''
ZDL	FILTER ( )	medium ( )		''	''
	FILTER (.h)	medium ( )		''	''

#### BOREHOLE & CEMENT

MEASUREMENT TYPE	PARAMETER	VALUE	UNITS	INTERVAL (ft)	
CASING - BOREHOLE & CEMENT VOLUME	CASING O.D.	4.500	in	TOP	BOTTOM
BIT SIZE	BIT SIZE	6.125	in	''	''
BOREHOLE CORR DIAMETER SOURCE	CALIPER/FIXED DIA. (cnbh#)	USE CALIPER		''	''
BOREHOLE CORR DIAMETER	FIXED DIAMETER (cnbh#)	6.125	in	''	''

#### CN PROCESSING

MEASUREMENT TYPE	PARAMETER	VALUE	UNITS	INTERVAL (ft)	
2447 CN MATRIX	2447 MATRIX	LIMESTONE		TOP	BOTTOM
CN SALINITY CORRECTION	SALINITY	500	ppm	''	''

#### ZDL PROCESSING

MEASUREMENT TYPE	PARAMETER	VALUE	UNITS	INTERVAL (ft)	
ZDL CHI-SMOOTH FILTER	DEN CHISM	ON		TOP	BOTTOM
DENSITY POROSITY	RHOmatrix	2.710	g/cm3	''	''
	RHOfluid	1.000	g/cm3	''	''
HTDN	HTDN TRACKING	ON		''	''

# CURVE DESCRIPTION REPORT

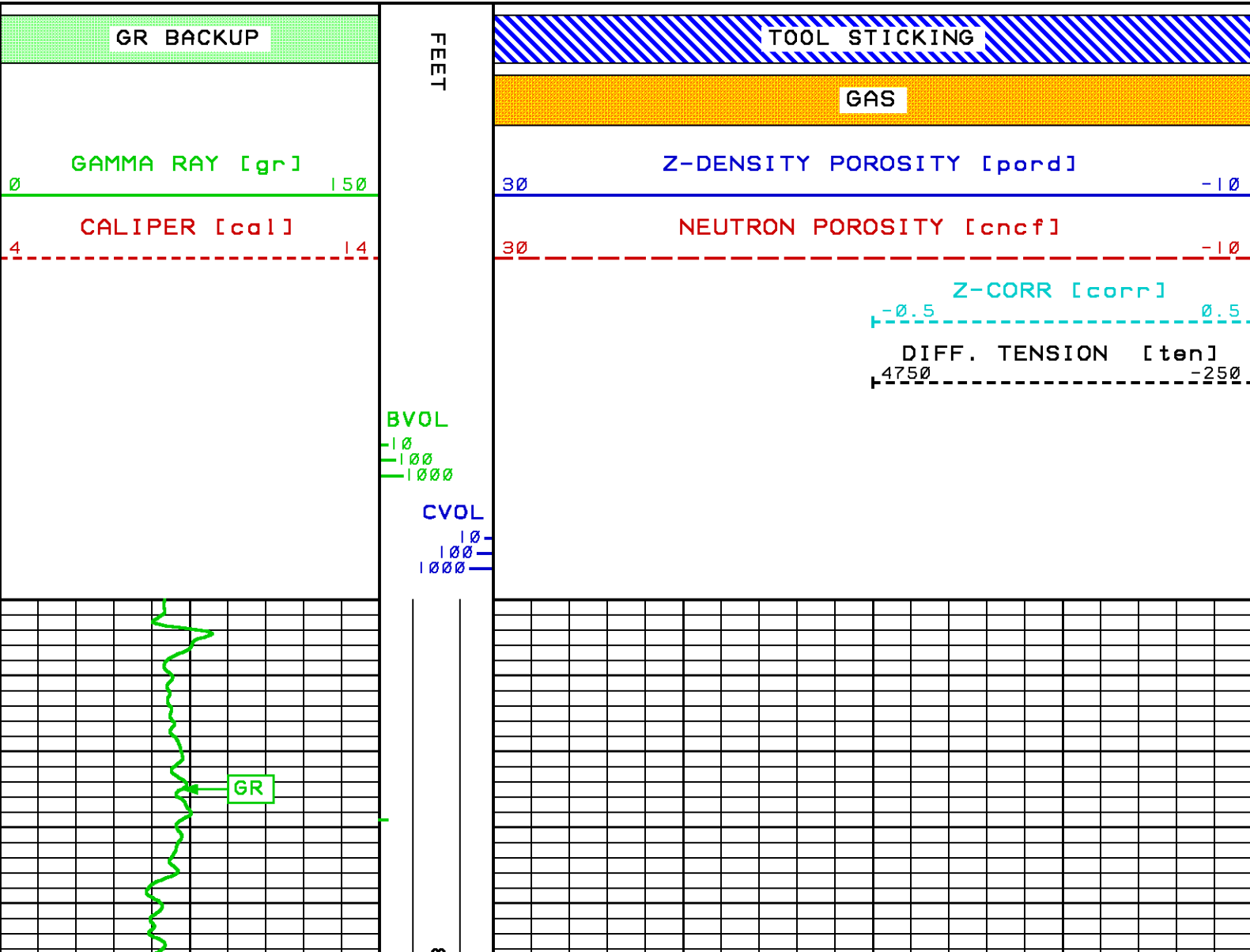
CURVE NAME	CURVE ALIAS	CREATION DATE	CURVE DESCRIPTION
FI·BVOL	BVOL	Dec 14 16:45:11 2007	BOREHOLE VOLUME
FI·CAL	CAL	Dec 14 16:45:11 2007	CALIPER
FI·CNCF	CNCF	Dec 14 16:45:11 2007	FIELD NORMALIZED COMPENSATED NEUTRON POROSITY
FI·CORR	CORR	Dec 14 16:45:11 2007	DENSITY CORRECTION
FI·CVOL	CVOL	Dec 14 16:45:11 2007	CEMENT VOLUME
FI·GR	GR	Dec 14 16:45:11 2007	GAMMA RAY
FI·PORD	PORD	Dec 14 16:45:11 2007	DENSITY POROSITY
FI·TEN	TEN	Dec 14 16:45:11 2007	DIFFERENTIAL TENSION

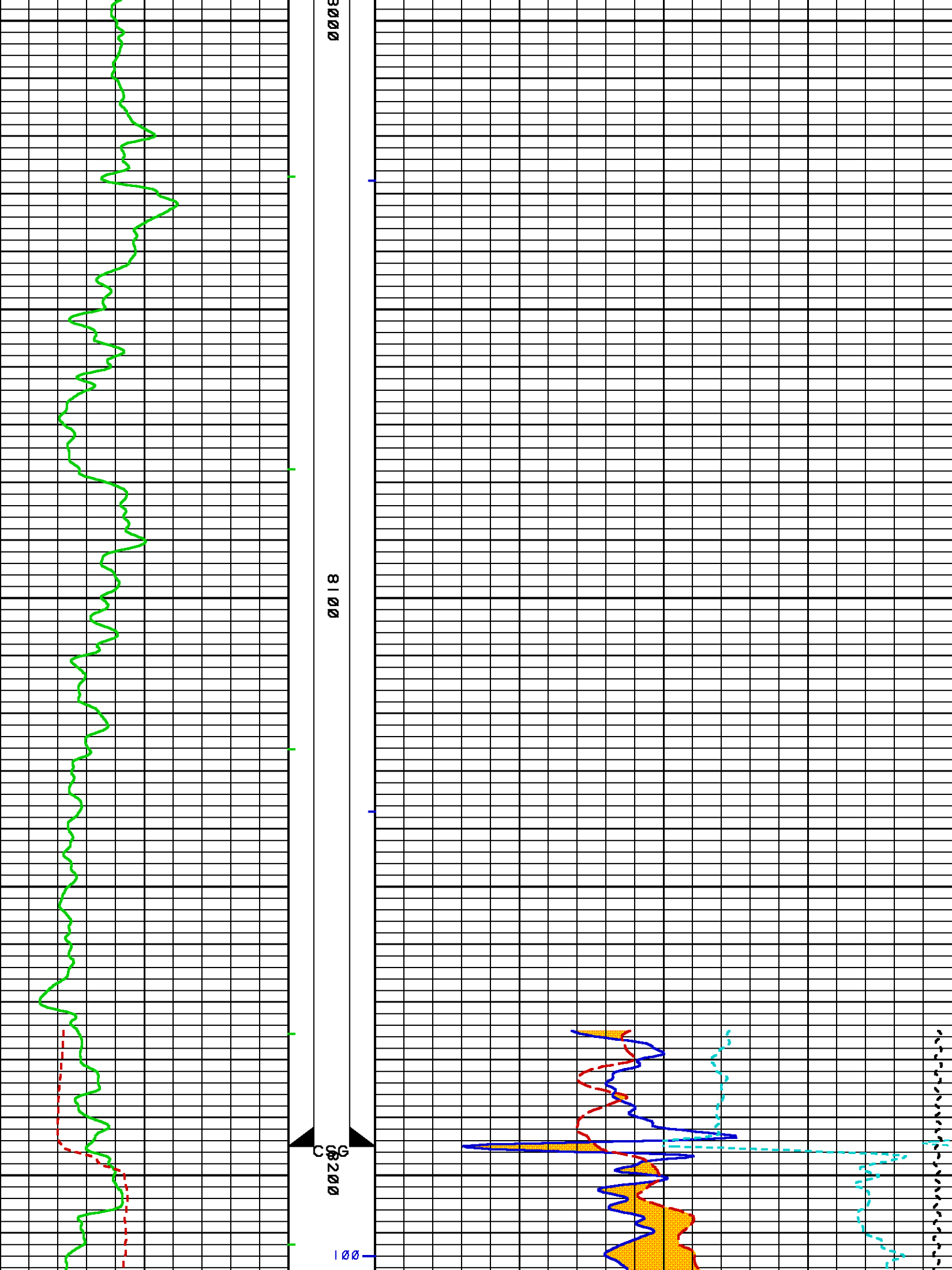
## CURVE MEASURE POINT OFFSET

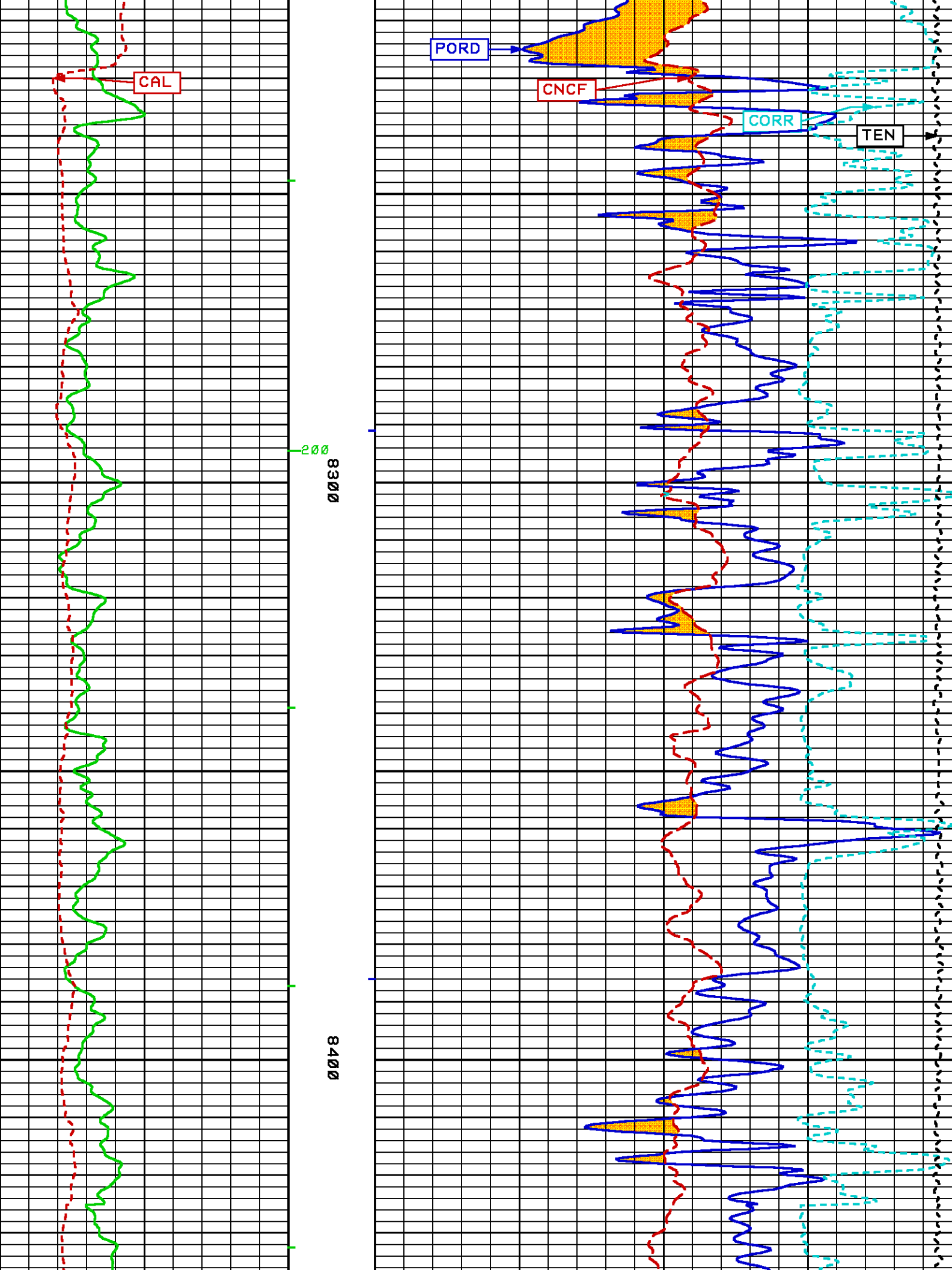
CURVE	OFFSET (ft)	CURVE	OFFSET (ft)	CURVE	OFFSET (ft)	CURVE	OFFSET (ft)
CAL	130.50	CORR	84.25	PORD	84.25		
CNCF	100.75	GR	110.50	TEN	0.00		

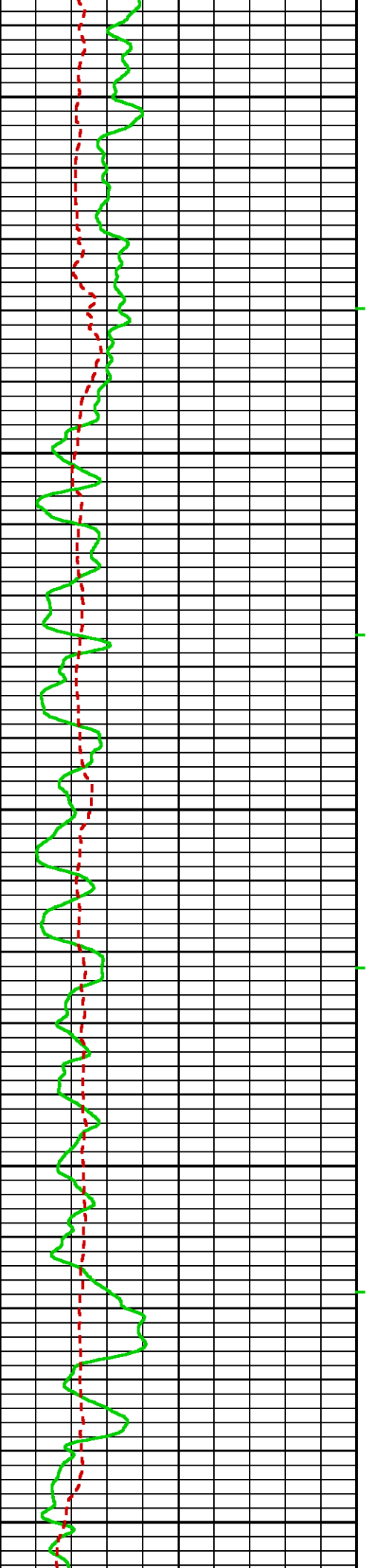
Presentation : rks6685:/data/14175b/ZDLCN\_POR\_MAIN\_R3.pdf [5"/100' Scale]  
 Plot Interval : 7950 - 9416 Feet

Data File 1 : FI : rks6685:/data/14175b/final.tif  
 Created On : Dec 8 12:58:48 2007  
 Company : CPC MINERAL, LLC  
 Well : CPC 17-1  
 Field : WILDCAT  
 File Interval : 7812 - 9448.75 Feet  
 Oct : N87ba



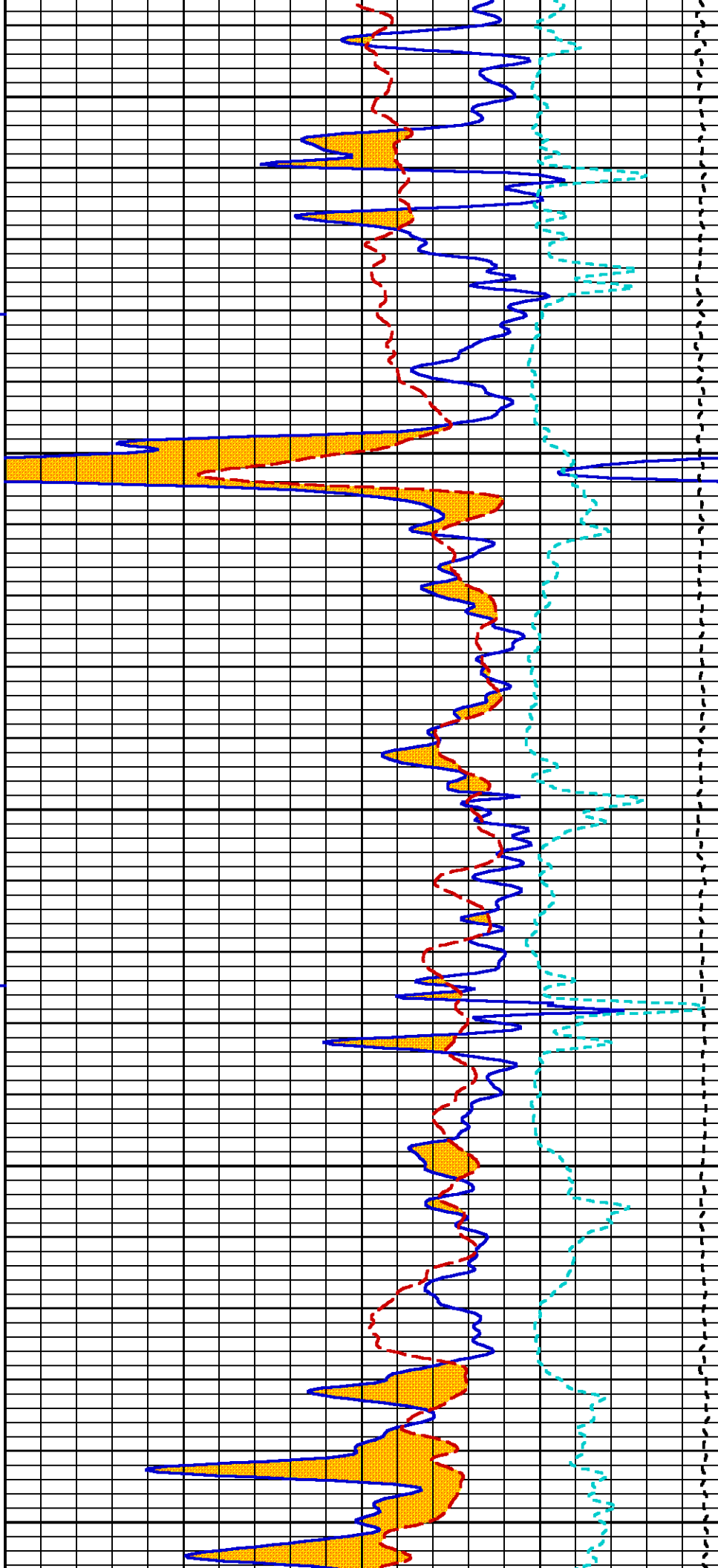


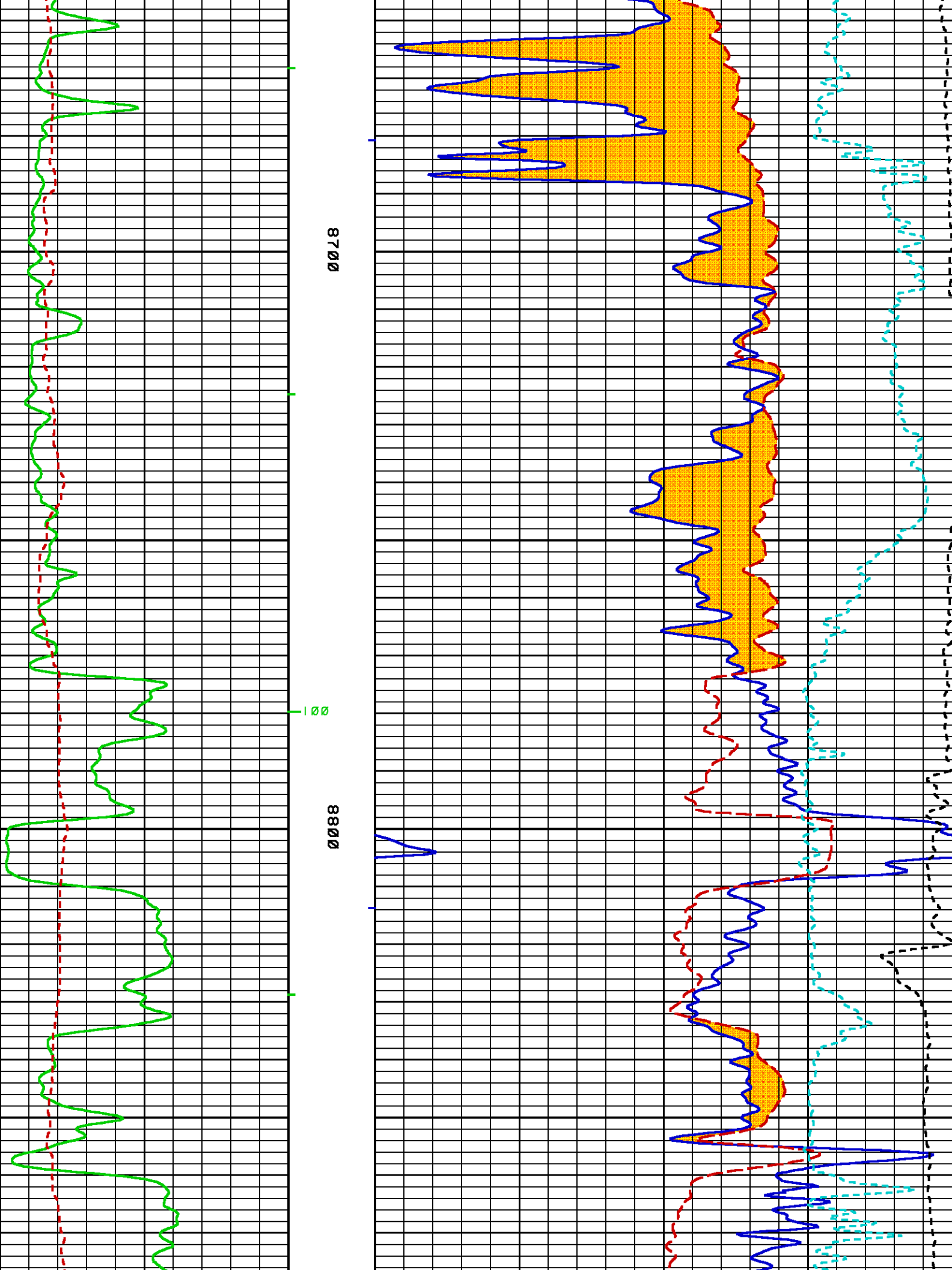


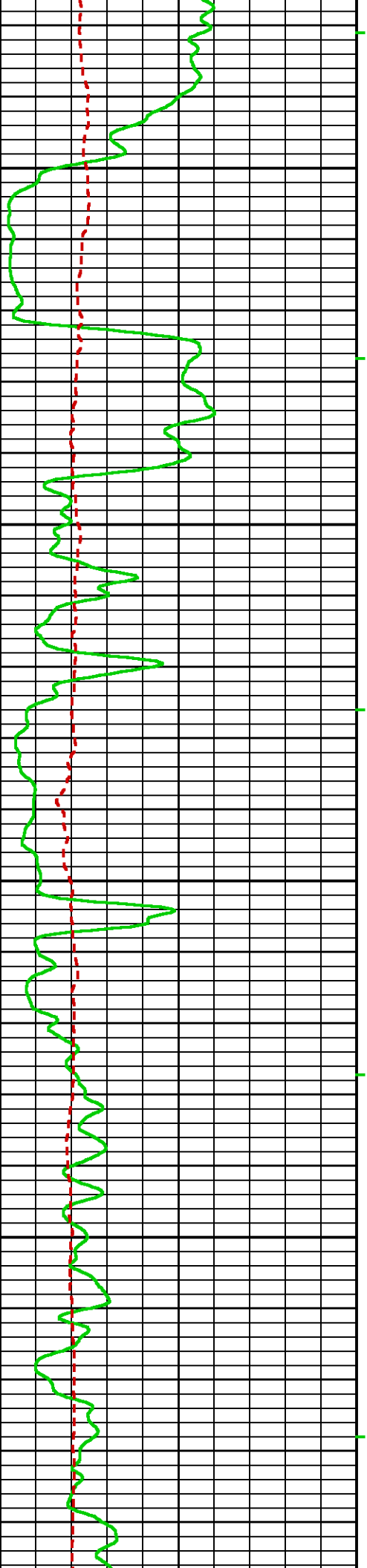


8500

0098

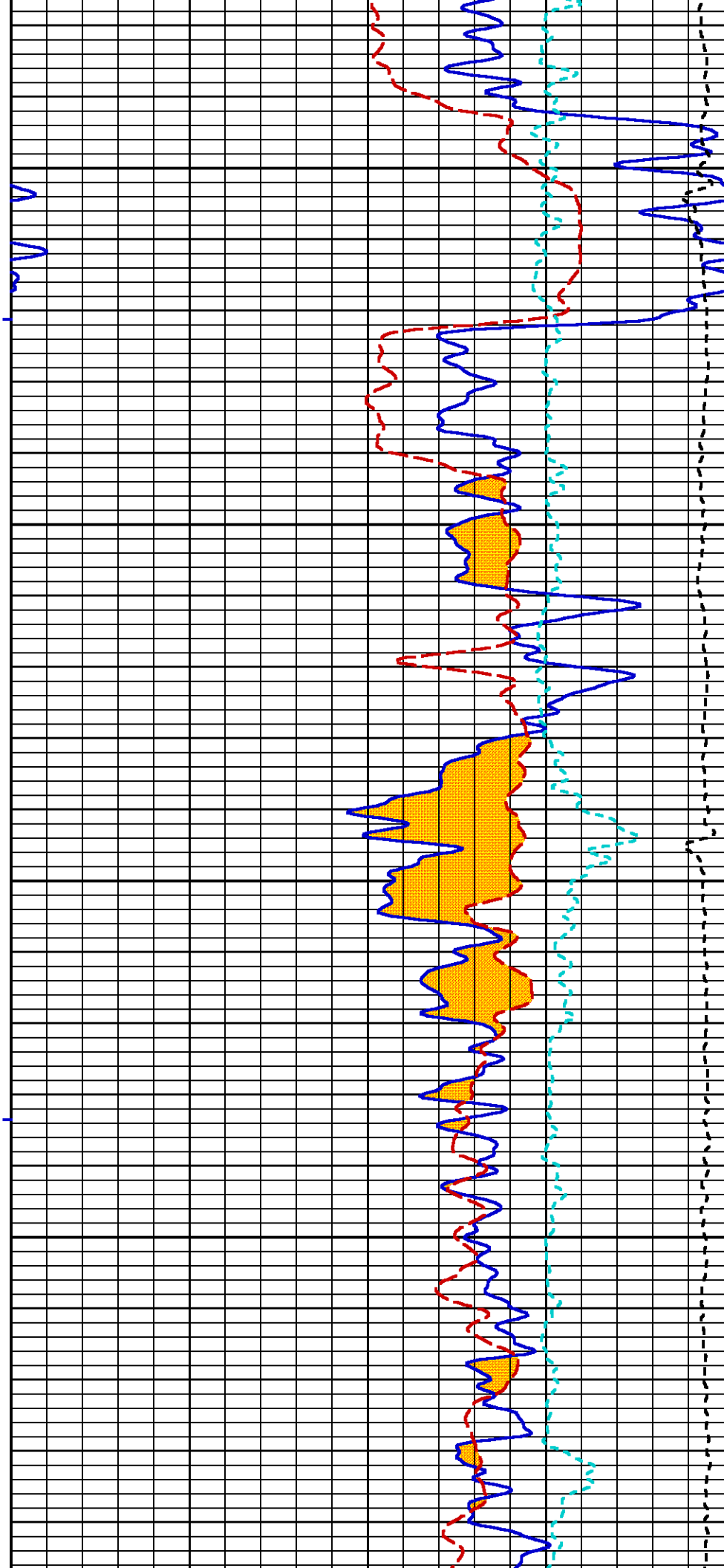




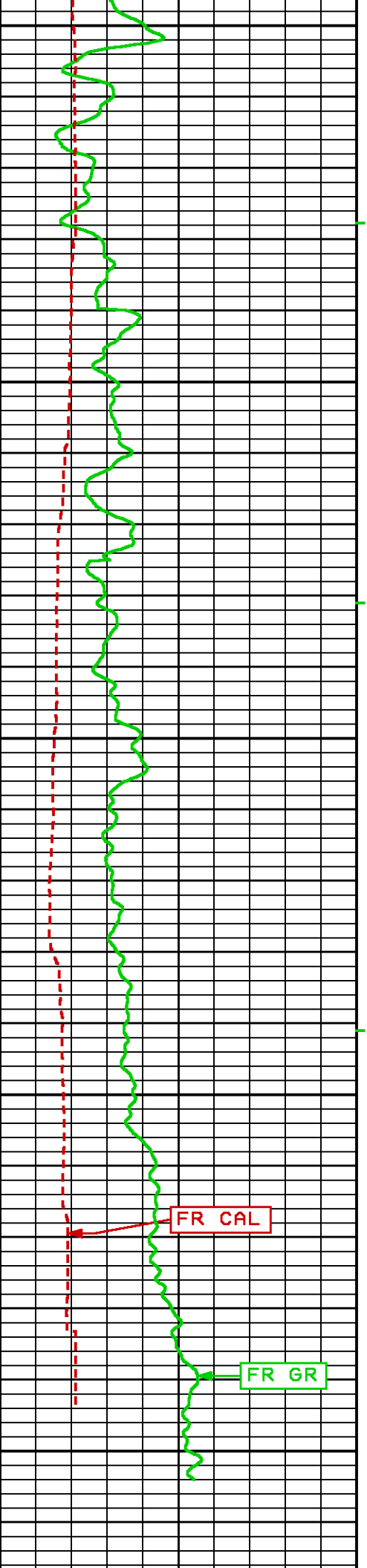


0068

0006







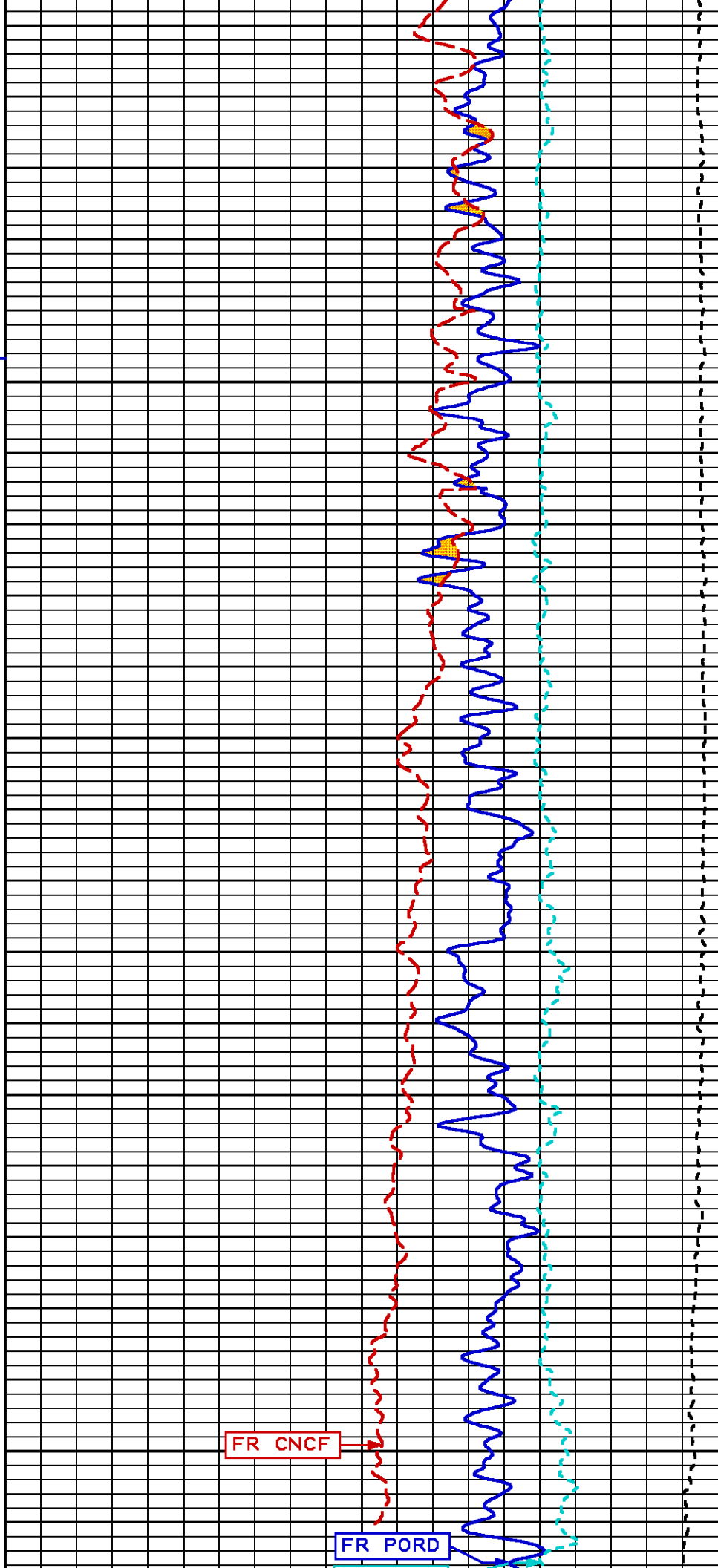
9100

9200

9300

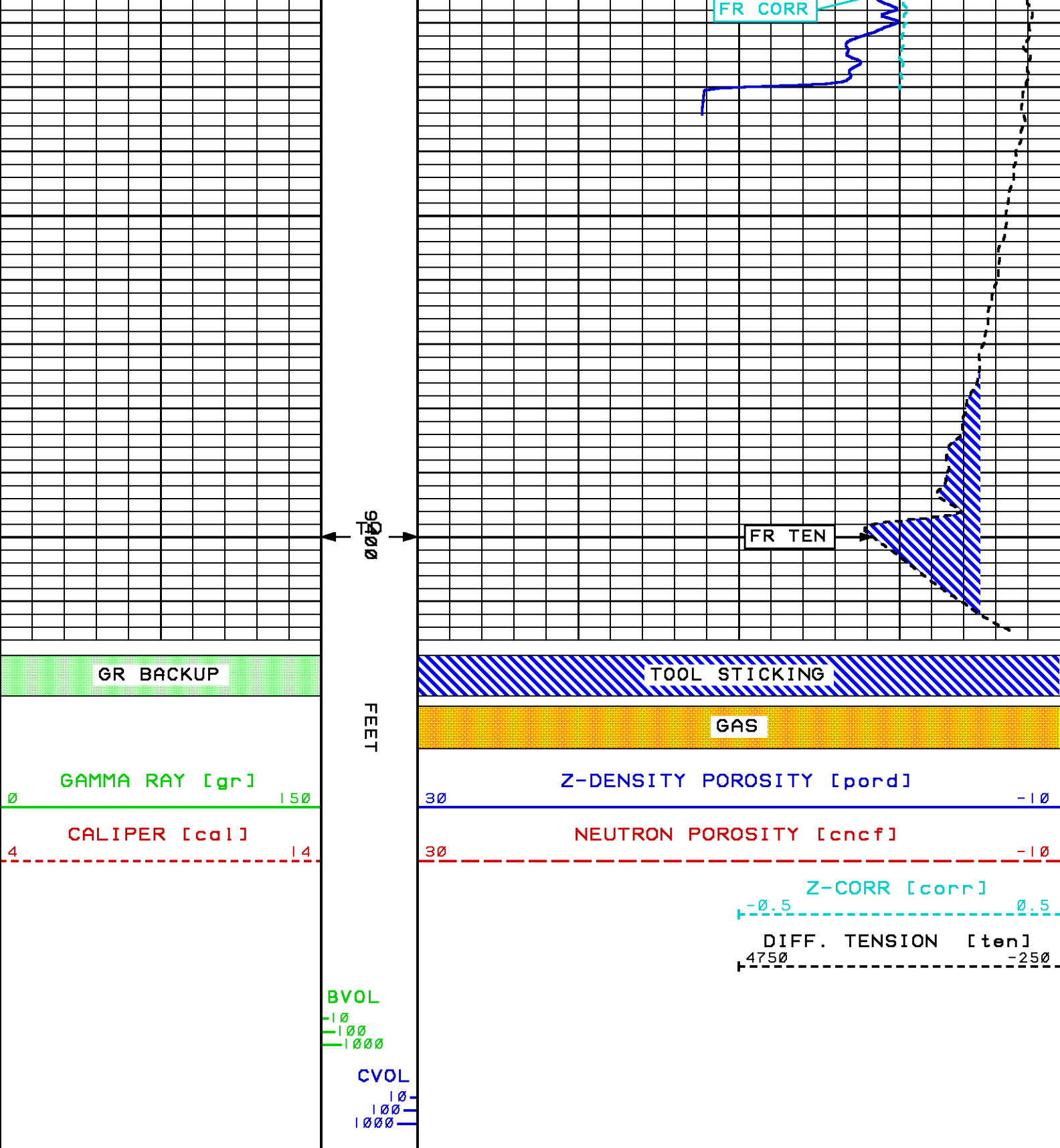
FR CAL

FR GR



FR CNCF

FR PORD



MAIN LOG 5"/100FT SCALE (BULK DENSITY)

### PARAMETER AND FILTER SUMMARY REPORT

FILE: /dat1a/14175b/N87ba03.prm  
 LOGGING MODE: DEPTH DIRECTION: UP  
 TOP DEPTH: 8335.250 ft BOTTOM DEPTH: 9241.750 ft

#### SYMMETRIC FILTER

MEASUREMENT TYPE	PARAMETER	VALUE	UNITS	INTERVAL (ft)	
SPEED	FILTER ( )	medium ( )		TOP	BOTTOM
	FILTER (.h)	medium ( )		..	..
TENSION	FILTER ( )	medium ( )		..	..
	FILTER (.h)	medium ( )		..	..
CALIPER	FILTER ( )	medium ( )		..	..
	FILTER (.h)	medium ( )		..	..
	FILTER (.i)	medium ( )		..	..
GR	FILTER ( )	medium ( )		..	..
ZDL	FILTER ( )	medium ( )		..	..
	FILTER (.h)	medium ( )		..	..

#### BOREHOLE & CEMENT

MEASUREMENT TYPE	PARAMETER	VALUE	UNITS	INTERVAL (ft)	
CASING - BOREHOLE & CEMENT VOLUME	CASING O.D.	4.500	in	TOP	BOTTOM
BIT SIZE	BIT SIZE	6.125	in	..	..

#### ZDL PROCESSING

MEASUREMENT TYPE	PARAMETER	VALUE	UNITS	INTERVAL (ft)	
ZDL CHI-SMOOTH FILTER	DEN CHISM	ON		TOP	BOTTOM
HTDN	HTDN TRACKING	ON		..	..

### CURVE DESCRIPTION REPORT

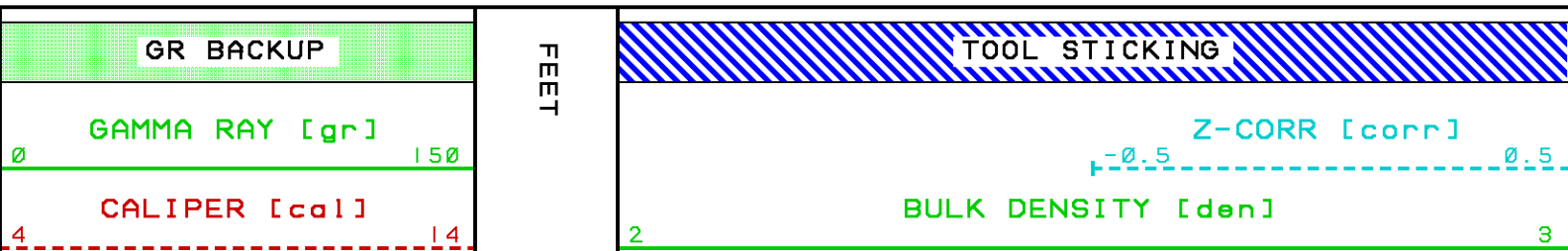
CURVE NAME	CURVE ALIAS	CREATION DATE	CURVE DESCRIPTION
FI:BVOL	BVOL	Dec 14 16:45:11 2007	BOREHOLE VOLUME
FI:CAL	CAL	Dec 14 16:45:11 2007	CALIPER
FI:CORR	CORR	Dec 14 16:45:11 2007	DENSITY CORRECTION
FI:CVOL	CVOL	Dec 14 16:45:11 2007	CEMENT VOLUME
FI:DEN	DEN	Dec 14 16:45:11 2007	COMPENSATED BULK DENSITY
FI:GR	GR	Dec 14 16:45:11 2007	GAMMA RAY
FI:TEN	TEN	Dec 14 16:45:11 2007	DIFFERENTIAL TENSION

### CURVE MEASURE POINT OFFSET

CURVE	OFFSET (ft)	CURVE	OFFSET (ft)	CURVE	OFFSET (ft)	CURVE	OFFSET (ft)
CAL	130.50	DEN	84.25	TEN	0.00		
CORR	84.25	GR	110.50				

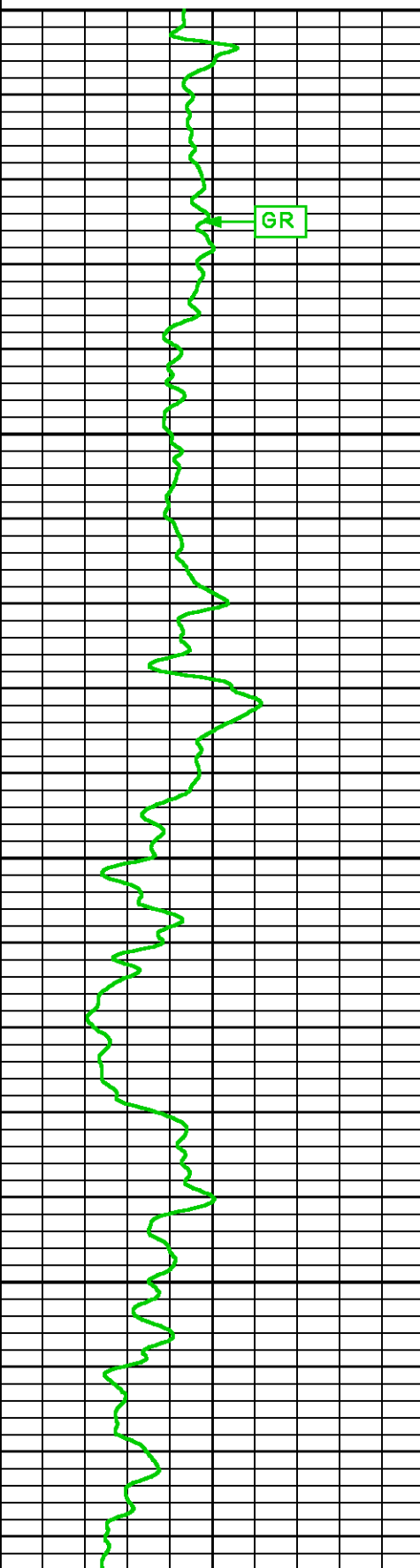
Presentation : rks6685:/dat1a/14175b/ZDLCN\_BULK\_MAIN\_R3.pdf [5"/100' Scale]  
 Plot Interval : 7950 - 9416 Feet

Data File 1 : FI : rks6685:/dat1a/14175b/final.xtf  
 Created On : Dec 8 12:58:48 2007  
 Company : CPC MINERAL, LLC  
 Well : CPC 17-1  
 Field : WILDCAT  
 File Interval: 7812 - 9448.75 Feet  
 Oct : N87ba



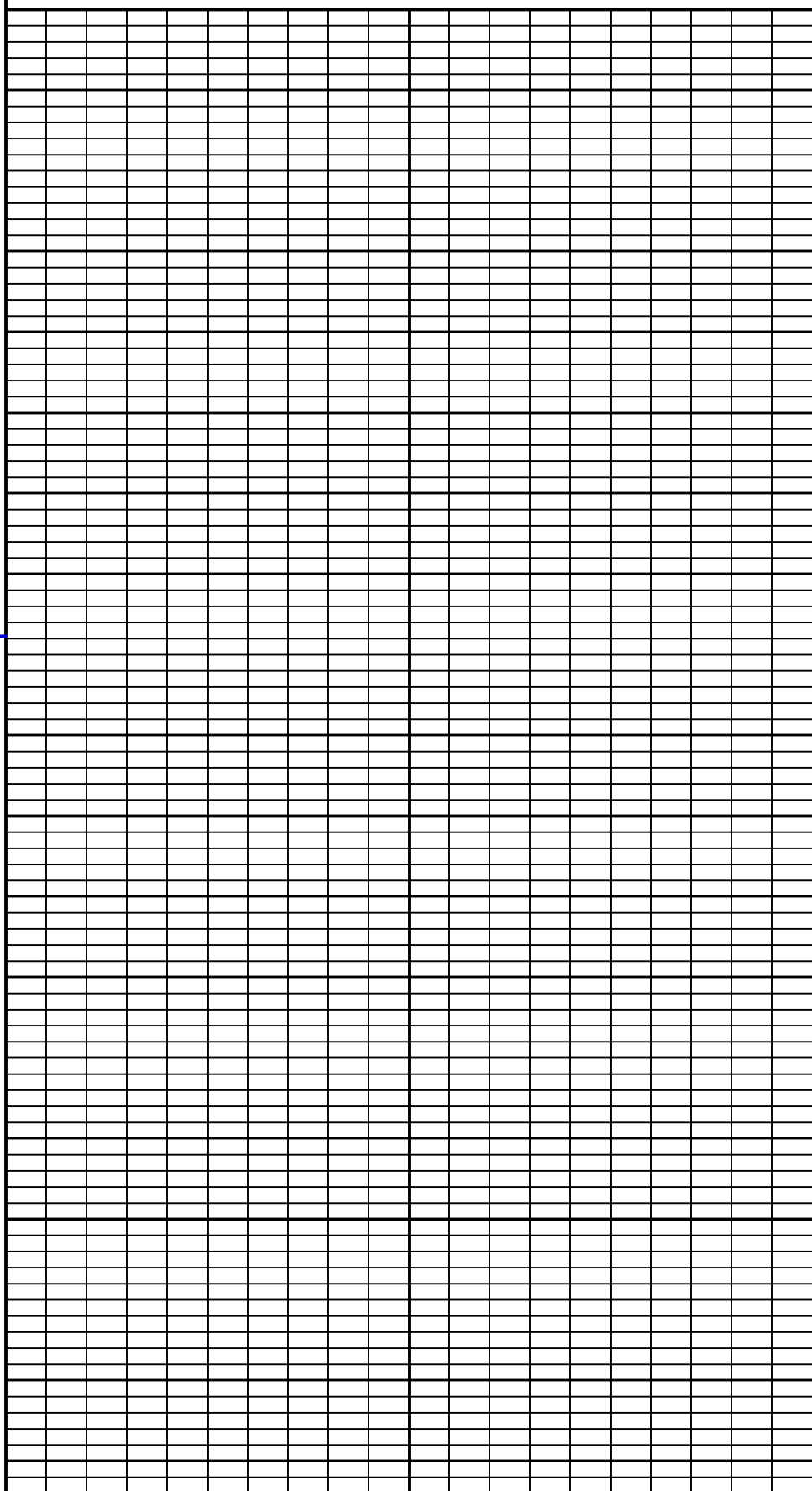
BVOL  
-10  
-100  
-1000

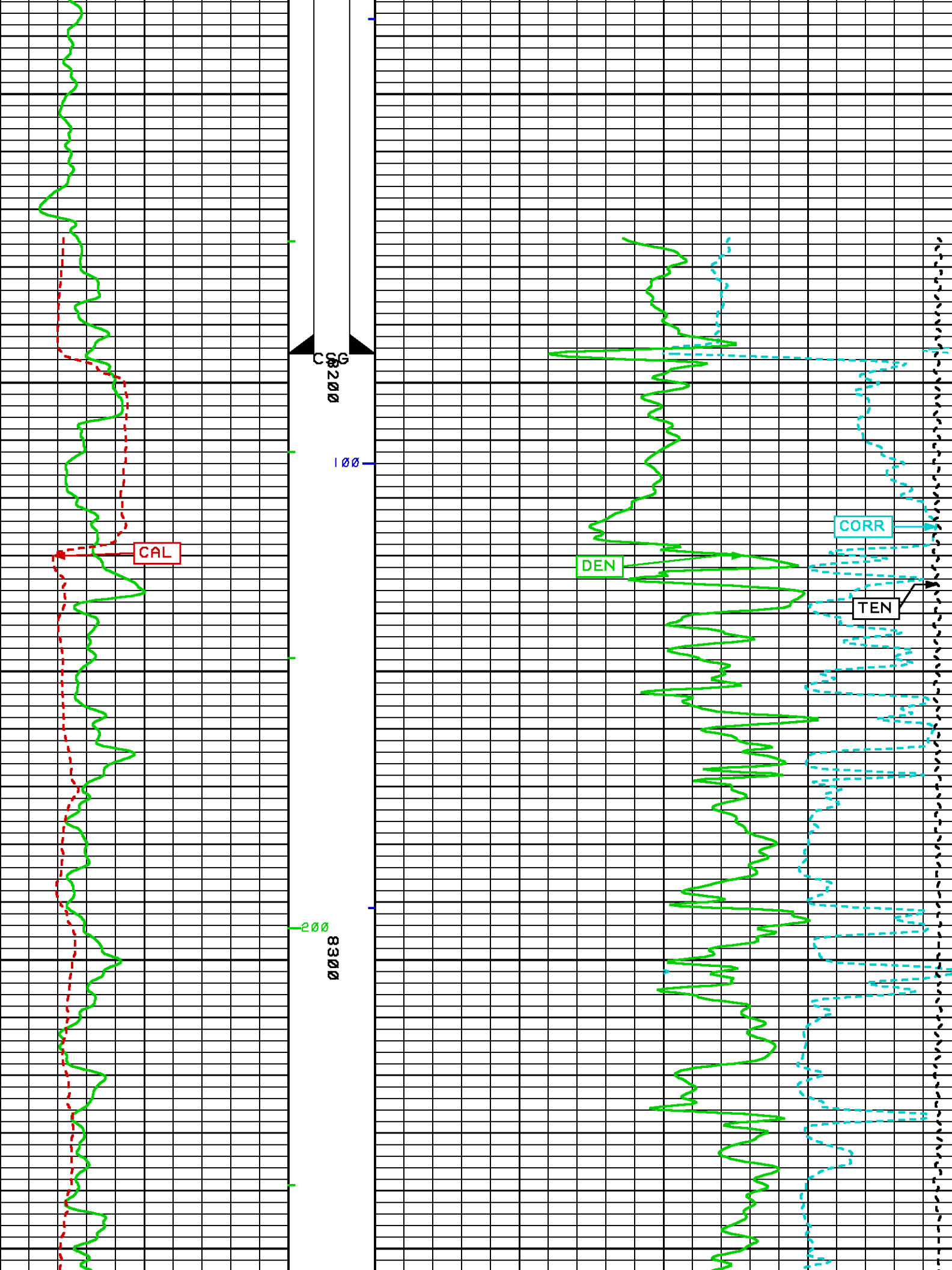
CVOL  
10  
100  
1000

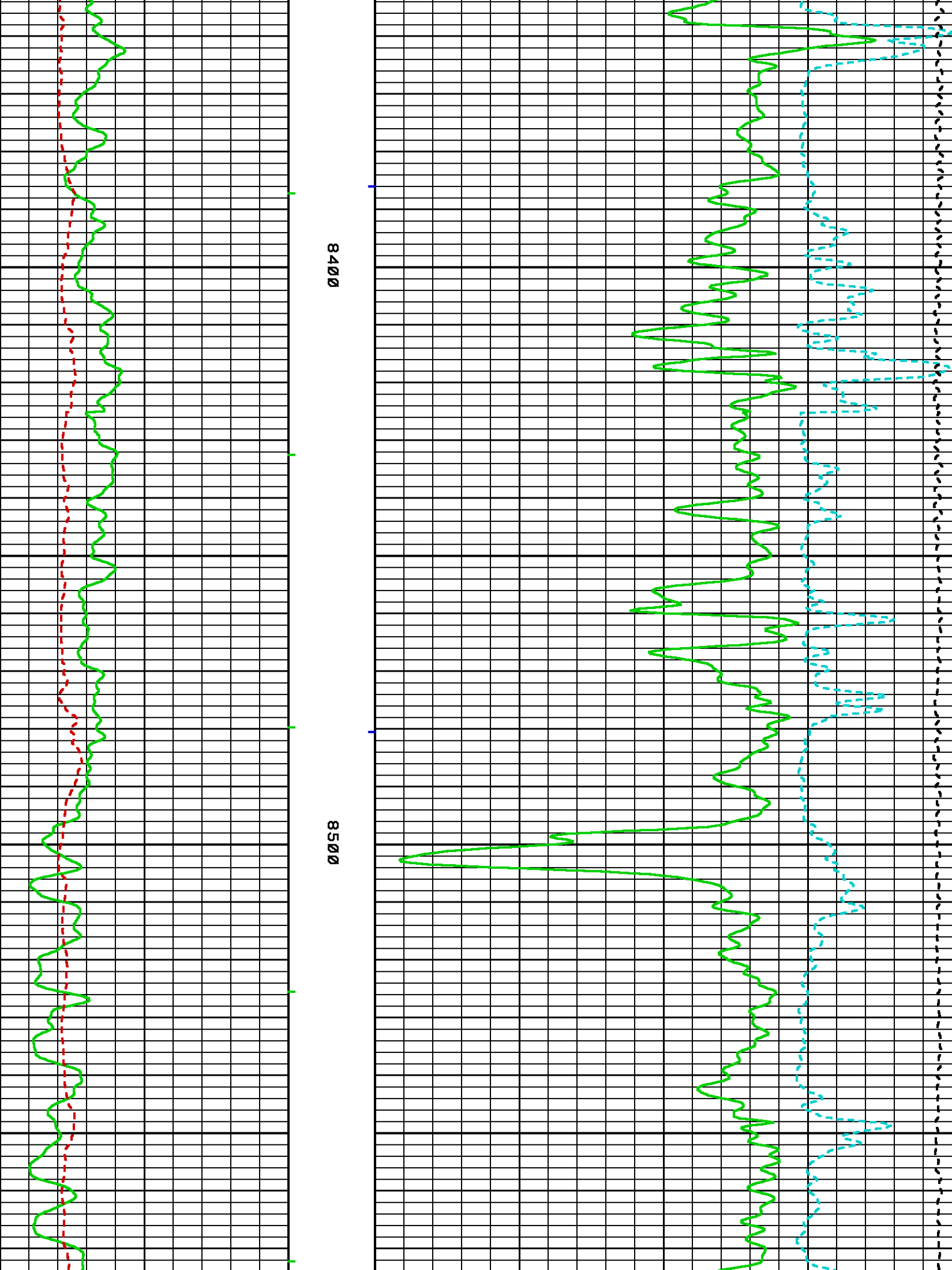


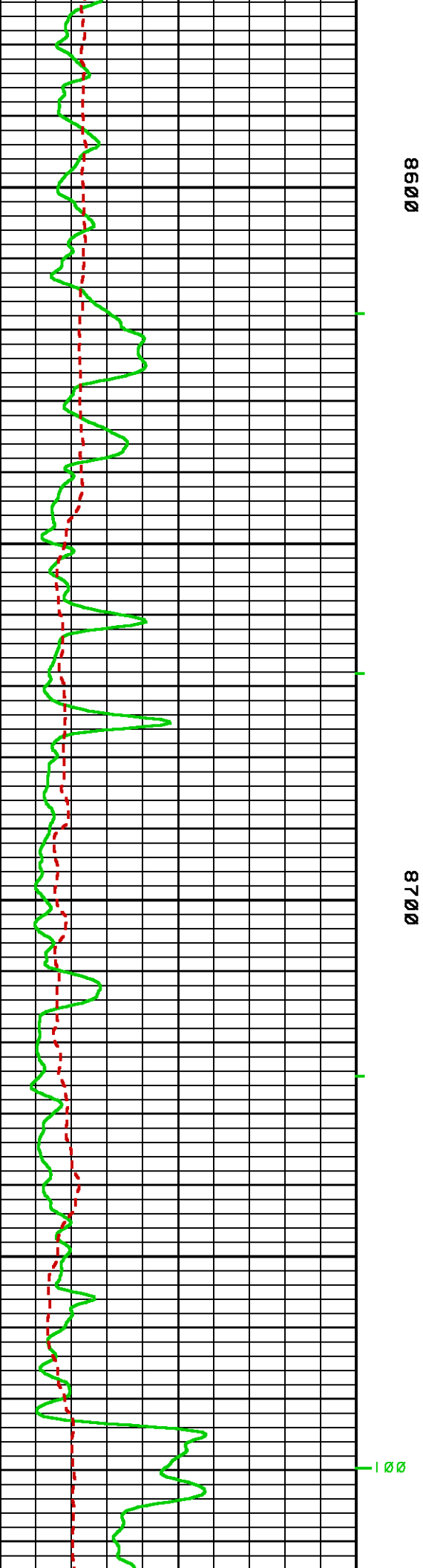
0000

0018





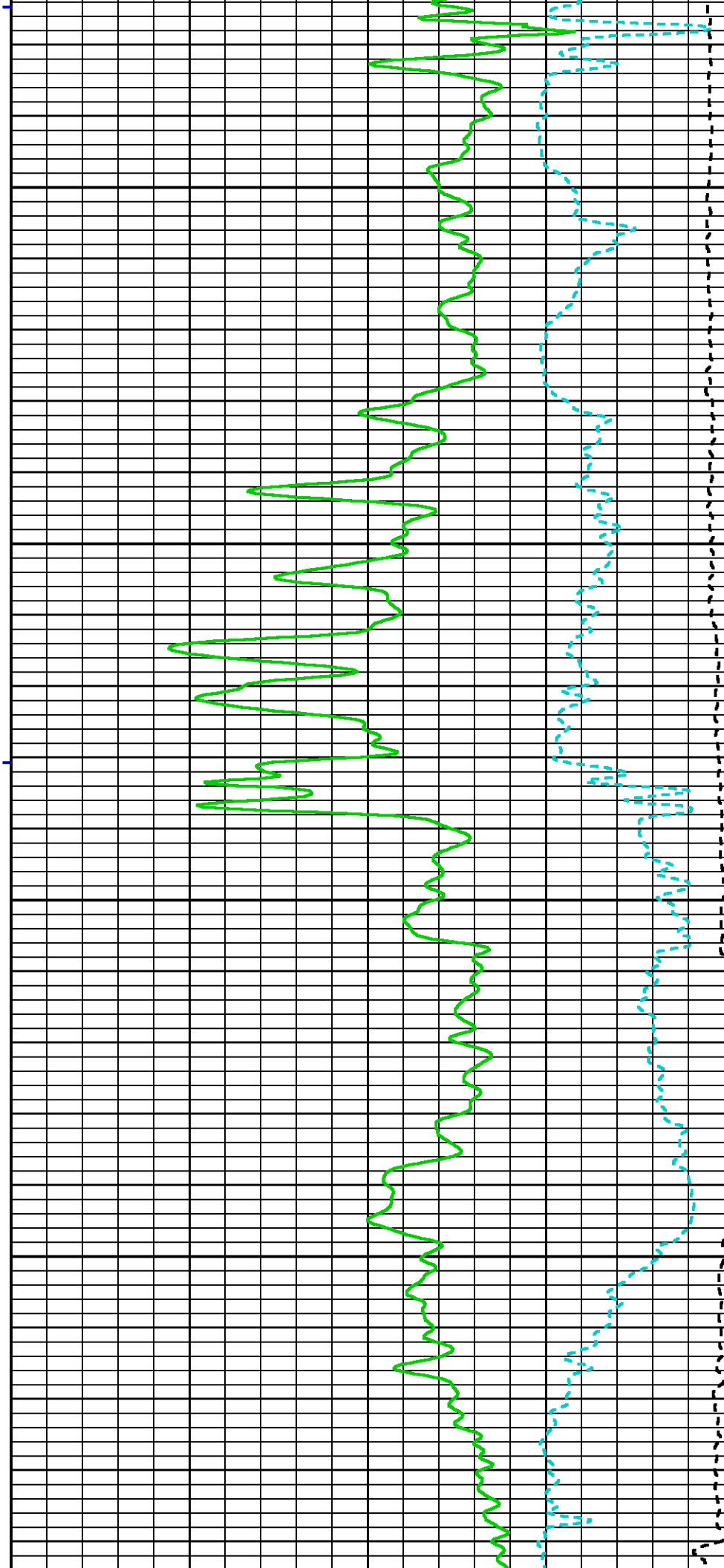




8600

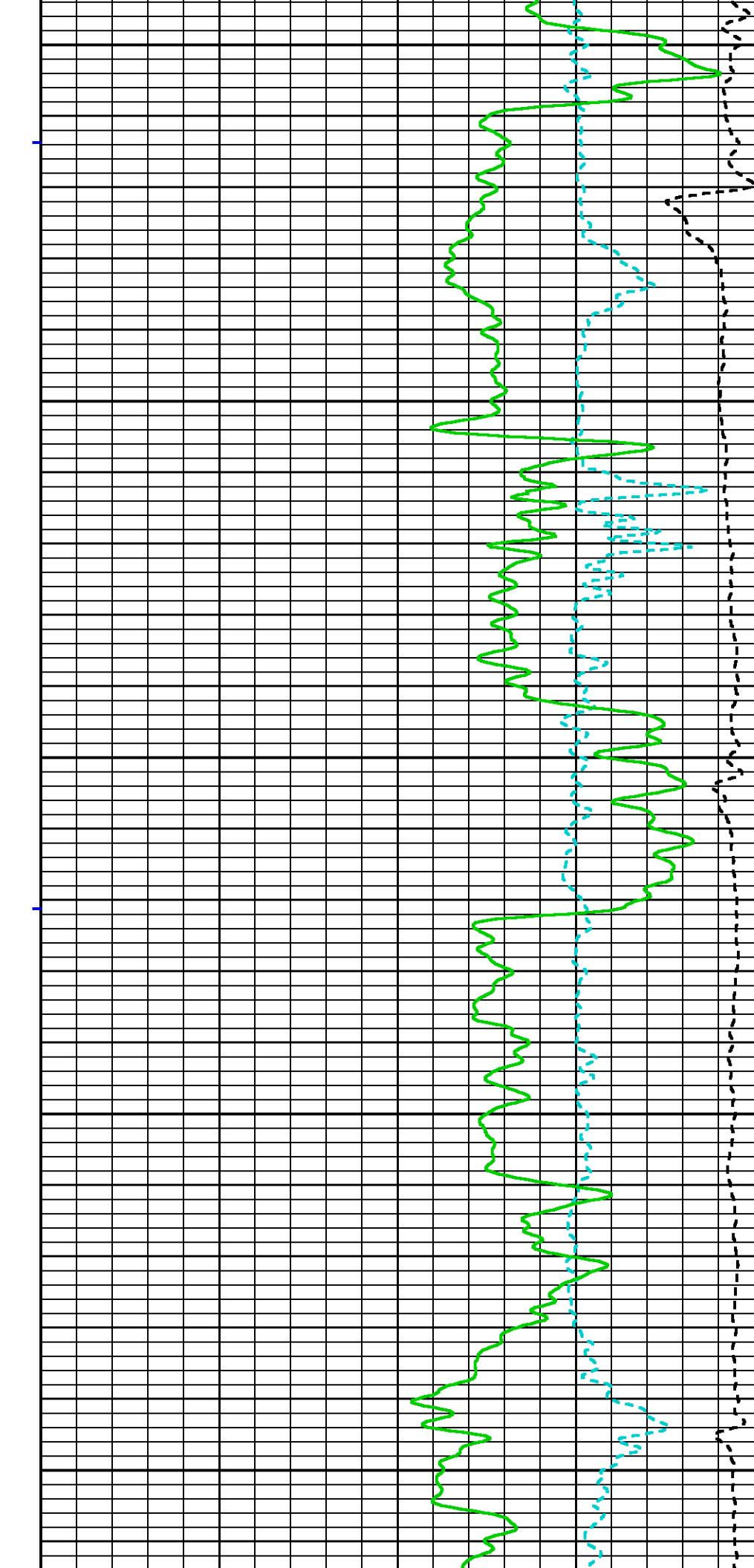
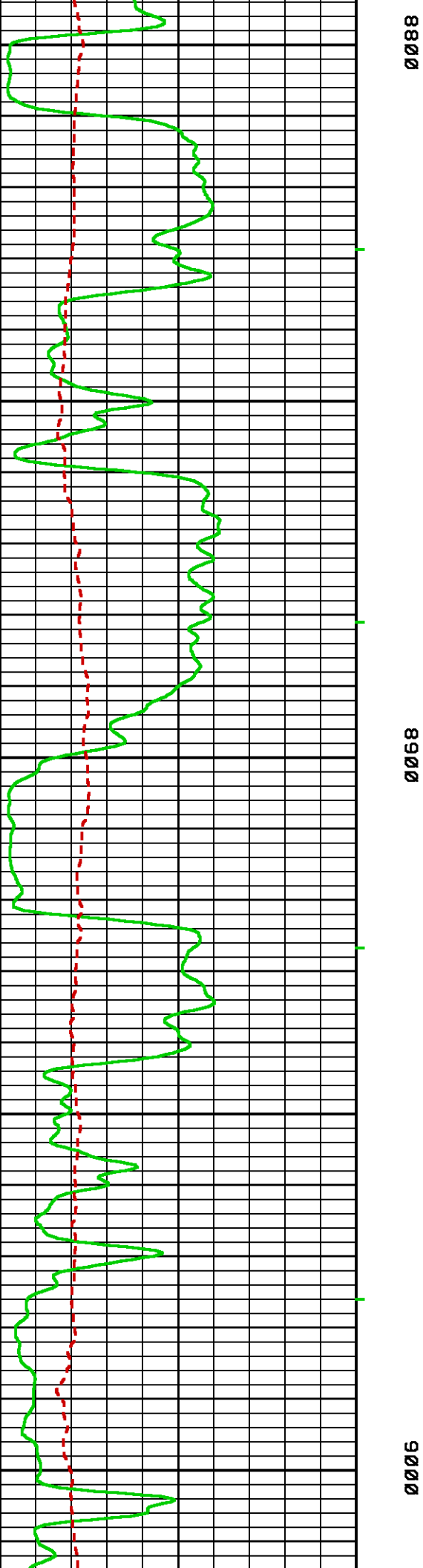
8700

100

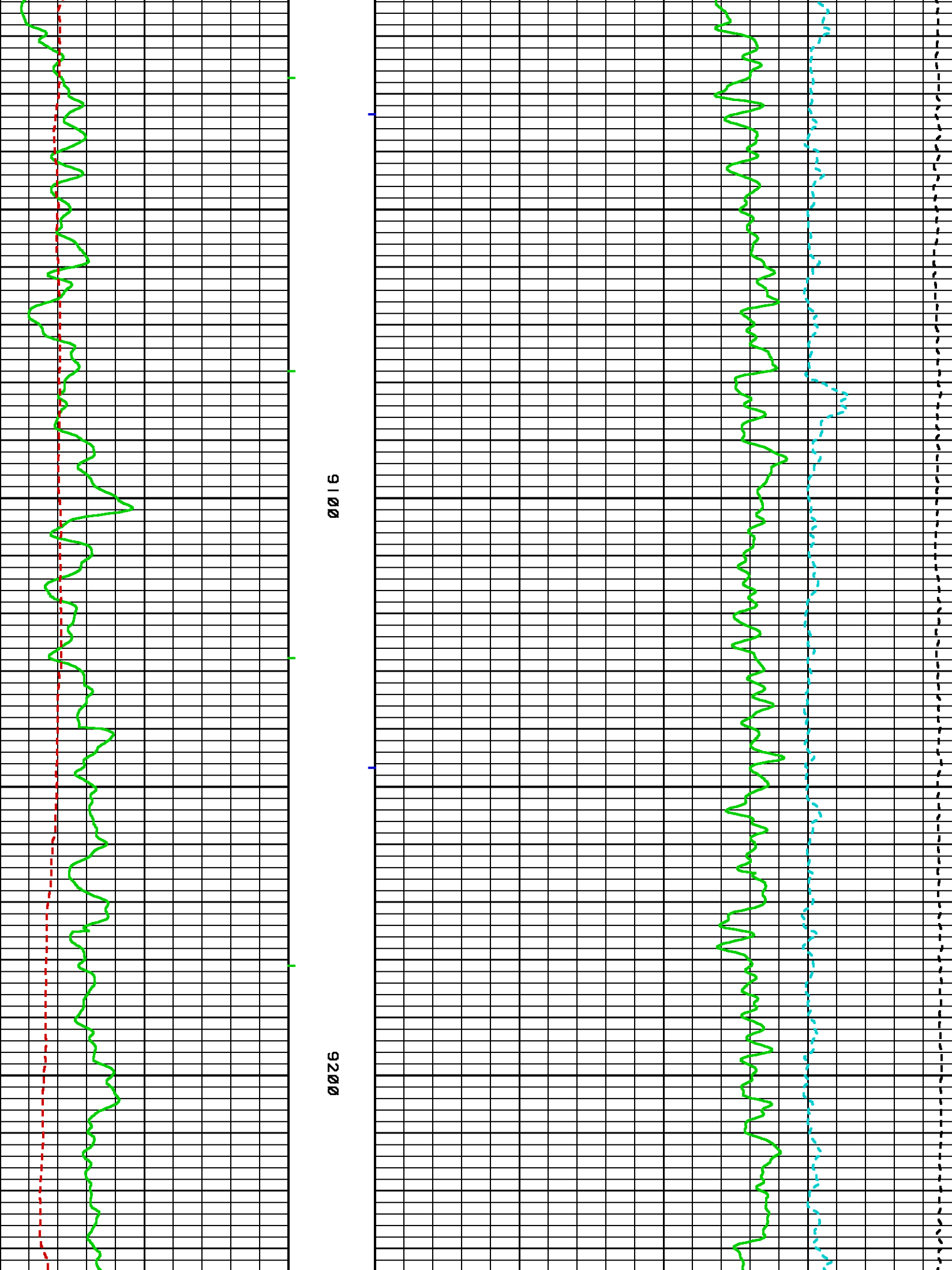


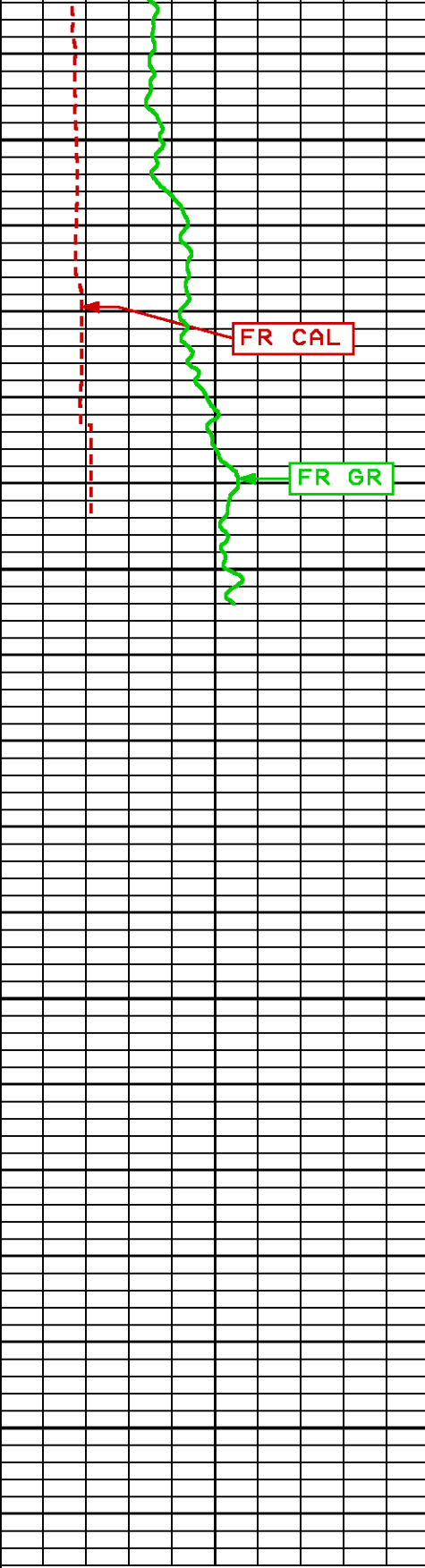
8600

8700







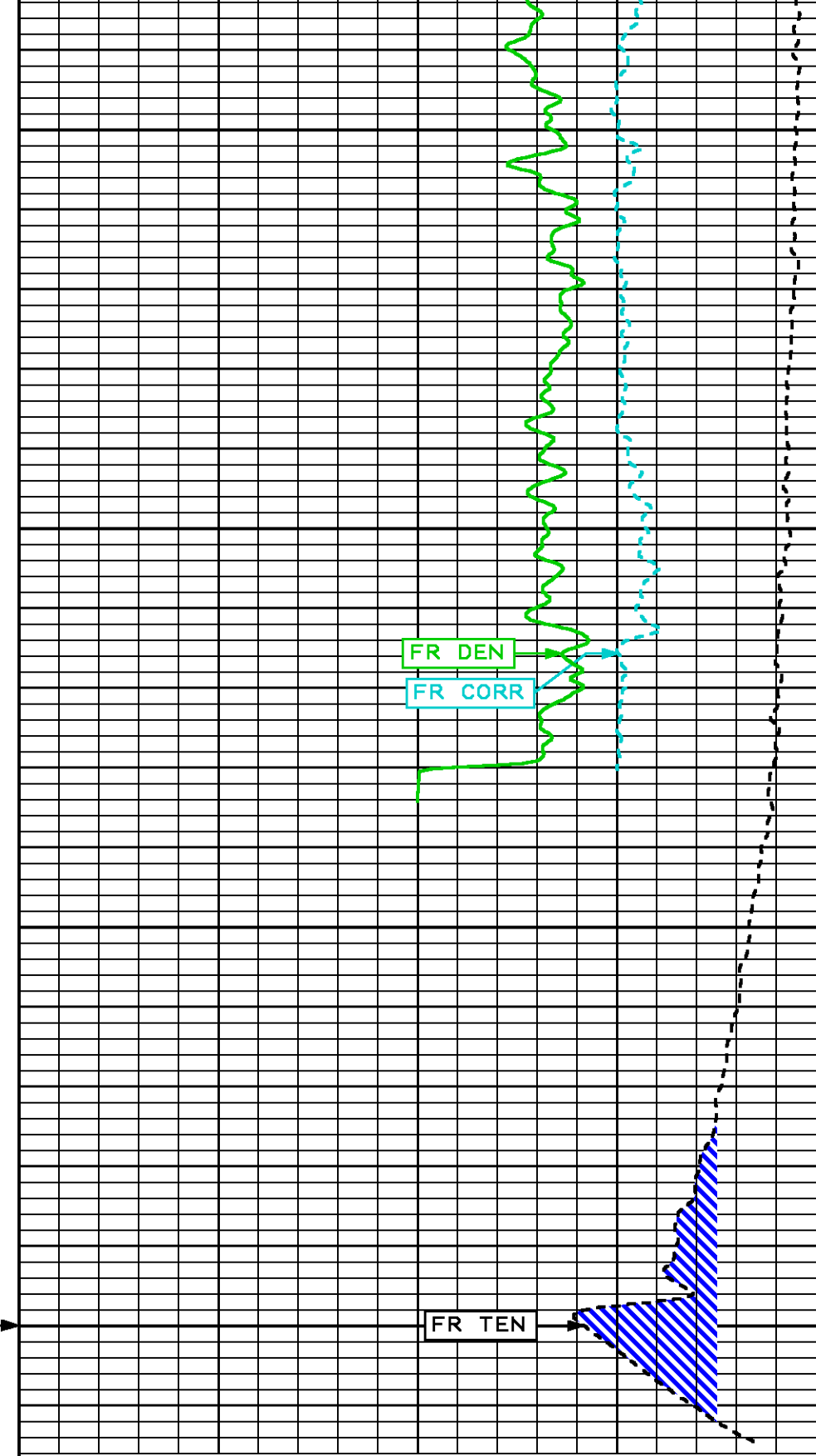


9300

9200

FEET

GR BACKUP	
GAMMA RAY [gr]	150
CALIPER [cal]	14



TOOL STICKING	
Z-CORR [corr]	0.5
BULK DENSITY [den]	3
DIFF. TENSION [ten]	-250

BVOL  
 -10  
 -100  
 -1000

CVOL

10  
 100  
 1000

## REPEAT LOG

ECLIPS 5.1i Sep 16, 2005  
 Updates: 1,2,3,33,38,40,42

Sat Dec 15 00:05:15 2007

Pcrplt /main/61 Cplot 9.27 Pdf\_Cpp /main/16 Fileview 5.08

### PARAMETER AND FILTER SUMMARY REPORT

FILE: /data/14175b/N87ba01.prm  
 LOGGING MODE: DEPTH DIRECTION: DOWN  
 TOP DEPTH: 8225.188 ft BOTTOM DEPTH: 9393.750 ft

#### SYMMETRIC FILTER

MEASUREMENT TYPE	PARAMETER	VALUE	UNITS	INTERVAL (ft)	
SPEED	FILTER (.h)	medium (l)		TOP	BOTTOM
	FILTER (.i)	medium (l)		"	"
TENSION	FILTER (.)	medium (l)		"	"
CALIPER	FILTER (.)	medium (l)		"	"
	FILTER (.h)	medium (l)		"	"
	FILTER (.i)	medium (l)		"	"
GR	FILTER (.i)	medium (l)		"	"
CN	FILTER (.i)	medium (l)		"	"
ZDL	FILTER (.h)	medium (l)		"	"
	FILTER (.i)	medium (l)		"	"

#### BOREHOLE & CEMENT

MEASUREMENT TYPE	PARAMETER	VALUE	UNITS	INTERVAL (ft)	
CASING - BOREHOLE & CEMENT VOLUME	CASING O.D.	4.500	in	TOP	BOTTOM
BIT SIZE	BIT SIZE	6.125	in	"	"
BOREHOLE CORR DIAMETER SOURCE	CALIPER/FIXED DIA. (cnbh#)	USE CALIPER		"	"
BOREHOLE CORR DIAMETER	FIXED DIAMETER (cnbh#)	6.125	in	"	"

#### CN PROCESSING

MEASUREMENT TYPE	PARAMETER	VALUE	UNITS	INTERVAL (ft)	
2447 CN MATRIX	2447 MATRIX	LIMESTONE		TOP	BOTTOM
CN SALINITY CORRECTION	SALINITY	500	ppm	"	"

#### ZDL PROCESSING

MEASUREMENT TYPE	PARAMETER	VALUE	UNITS	INTERVAL (ft)	
ZDL CHI-SMOOTH FILTER	DEN CHISM	ON		TOP	BOTTOM
DENSITY POROSITY	RHOmatrix	2.710	g/cm3	"	"
	RHOfluid	1.000	g/cm3	"	"
HTDN	HTDN TRACKING	ON		"	"

### CURVE DESCRIPTION REPORT

CURVE NAME	CURVE ALIAS	CREATION DATE	CURVE DESCRIPTION		
FL_BVOL	BVOL	14-16-05 10:05:15	BOREHOLE VOLUME		

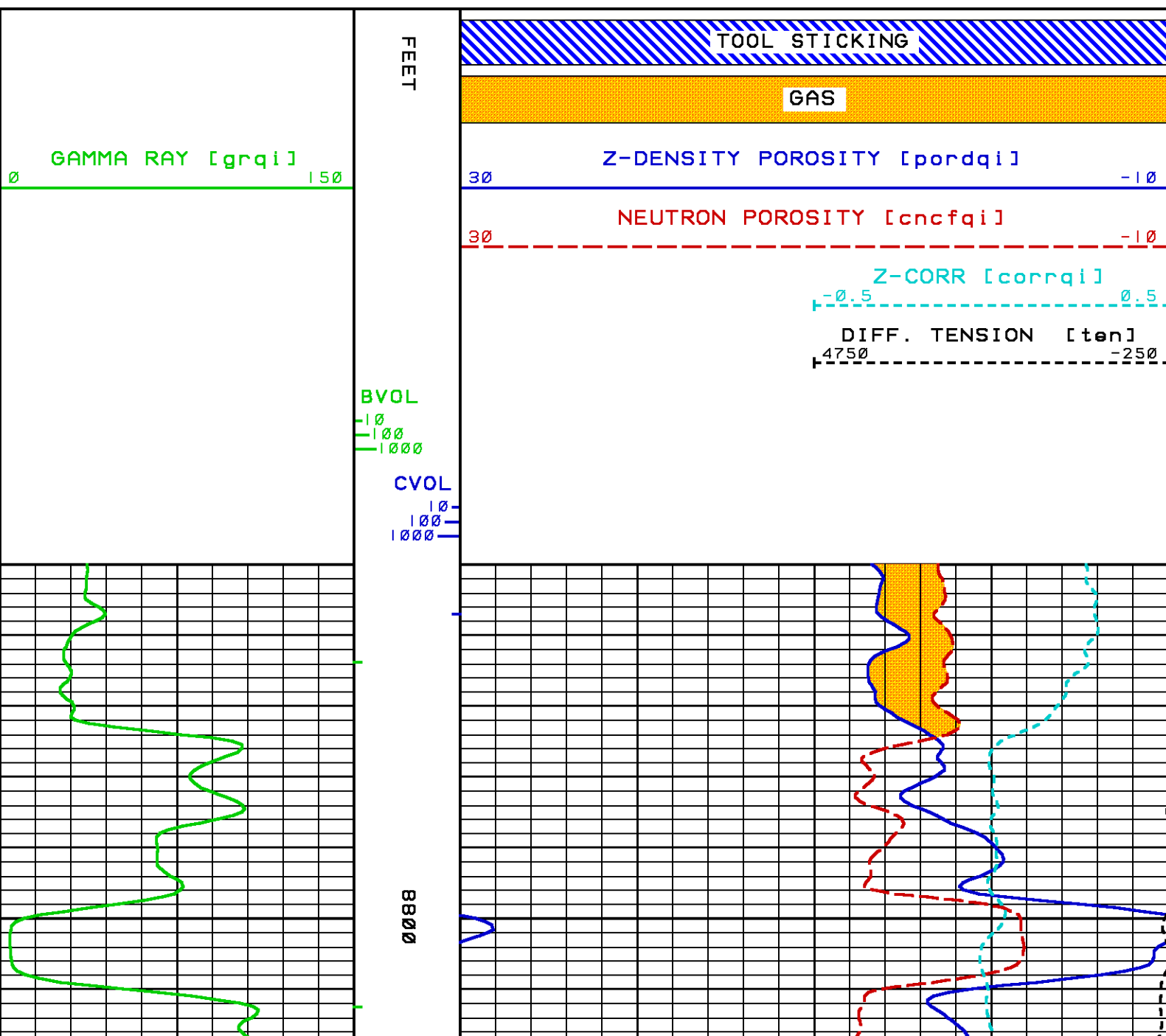
FI:BVOL	BVOL	Dec 14 16:05:43 2007	BOREHOLE VOLUME
FI:CNCFQI	CNCFQI	Dec 14 16:05:43 2007	FIELD NORMALIZED COMPENSATED NEUTRON POROSITY
FI:CORRQI	CORRQI	Dec 14 16:05:43 2007	DENSITY CORRECTION
FI:CVOL	CVOL	Dec 14 16:05:43 2007	CEMENT VOLUME
FI:GRQI	GRQI	Dec 14 16:05:43 2007	GAMMA RAY
FI:PORQI	PORQI	Dec 14 16:05:43 2007	DENSITY POROSITY
FI:TEN	TEN	Dec 14 16:05:43 2007	DIFFERENTIAL TENSION

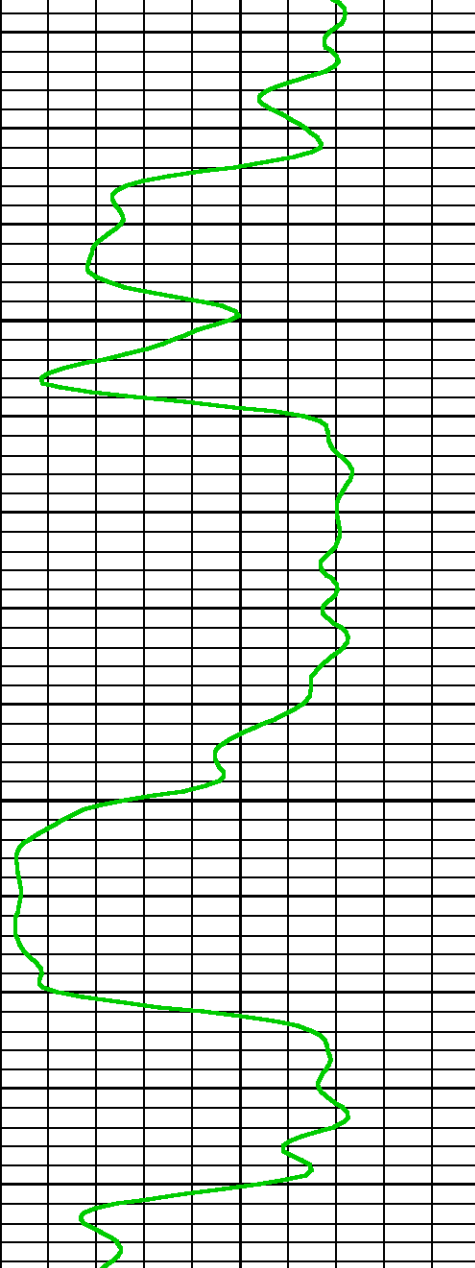
### CURVE MEASURE POINT OFFSET

CURVE	OFFSET (ft)	CURVE	OFFSET (ft)	CURVE	OFFSET (ft)	CURVE	OFFSET (ft)
CNCFQI	100.50	GRQI	110.50	TEN	0.00		
CORRQI	84.50	PORQI	84.50				

Presentation : rks6685:/data/14175b/ZDLCN\_POR\_REPEAT\_R3.pdf [5"/100' Scale]  
 Plot Interval : 8750 - 8950 Feet

Data File 1 : FI : rks6685:/data/14175b/REPEAT\_R3.xif  
 Created On : Dec 14 16:05:43 2007  
 Company : CPC MINERAL, LLC  
 Well : CPC 17-1  
 Field : WILDCAT  
 File Interval: 0 - 8950 Feet  
 Oct : N87ba





0068

FEET

GAMMA RAY [grqi]

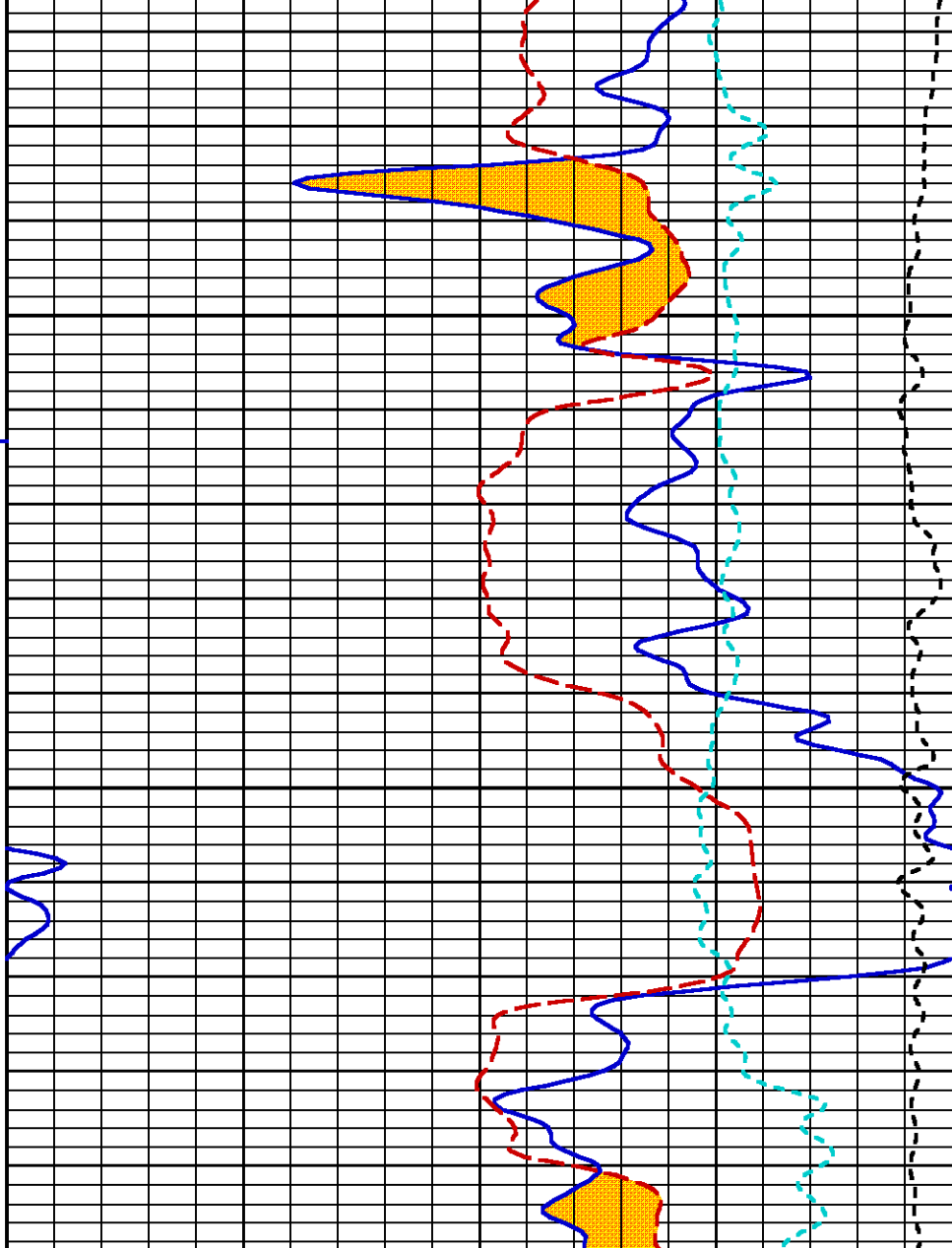
0 150

BVOL

-10  
-100  
-1000

CVOL

-10  
-100  
-1000



TOOL STICKING

GAS

Z-DENSITY POROSITY [pordqi]

30 -10

NEUTRON POROSITY [cnrfqi]

30 -10

Z-CORR [corrqi]

-0.5 0.5

DIFF. TENSION [ten]

4750 -250

**MAIN LOG 5"/100FT SCALE (POROSITY)  
200FT CASING PASS**

ECLIPS 5.1i Sep 16, 2005  
Updates: 1,2,3,33,38,40,42

Sun Dec 16 17:09:11 2007

Pcrplt /main/61 Cplot 9.27 Pdf\_Cpp /main/16 Fileview 5.08

**PARAMETER AND FILTER SUMMARY REPORT**

FILE: /data/14175b/N87ba03.prm  
LOGGING MODE: DEPTH DIRECTION: UP  
TOP DEPTH: 8335.250 ft BOTTOM DEPTH: 9241.750 ft

**SYMMETRIC FILTER**

MEASUREMENT TYPE	PARAMETER	VALUE	UNITS	INTERVAL (ft)	
SPEED	FILTER (.h)	medium (l)		TOP	BOTTOM
TENSION	FILTER ( )	medium (l)		''	''
CALIPER	FILTER ( )	medium (l)		''	''
	FILTER (.h)	medium (l)		''	''
	FILTER (.i)	medium (l)		''	''
	FILTER ( )	medium (l)		''	''
GR	FILTER ( )	medium (l)		''	''
CN	FILTER ( )	medium (l)		''	''
ZDL	FILTER (.h)	medium (l)		''	''

**BOREHOLE & CEMENT**

MEASUREMENT TYPE	PARAMETER	VALUE	UNITS	INTERVAL (ft)	
CASING - BOREHOLE & CEMENT VOLUME	CASING O.D.	4.500	in	TOP	BOTTOM
BIT SIZE	BIT SIZE	6.125	in	''	''
BOREHOLE CORR DIAMETER SOURCE	CALIPER/FIXED DIA. (cnbh#)	USE CALIPER		''	''
BOREHOLE CORR DIAMETER	FIXED DIAMETER (cnbh#)	6.125	in	''	''

**CN PROCESSING**

MEASUREMENT TYPE	PARAMETER	VALUE	UNITS	INTERVAL (ft)	
2447 CN MATRIX	2447 MATRIX	LIMESTONE		TOP	BOTTOM
CN SALINITY CORRECTION	SALINITY	500	ppm	''	''

**ZDL PROCESSING**

MEASUREMENT TYPE	PARAMETER	VALUE	UNITS	INTERVAL (ft)	
ZDL CHI-SMOOTH FILTER	DEN CHISM	ON		TOP	BOTTOM
HTDN	HTDN TRACKING	ON		''	''

**CURVE DESCRIPTION REPORT**

CURVE NAME	CURVE ALIAS	CREATION DATE	CURVE DESCRIPTION
FI:BVOL	BVOL	Dec 14 16:45:11 2007	BOREHOLE VOLUME
FI:CNCF	CNCF	Dec 14 16:45:11 2007	FIELD NORMALIZED COMPENSATED NEUTRON POROSITY
FI:CVOL	CVOL	Dec 14 16:45:11 2007	CEMENT VOLUME
FI:GR	GR	Dec 14 16:45:11 2007	GAMMA RAY
FI:TEN	TEN	Dec 14 16:45:11 2007	DIFFERENTIAL TENSION

**CURVE MEASURE POINT OFFSET**

CURVE	OFFSET (ft)	CURVE	OFFSET (ft)	CURVE	OFFSET (ft)	CURVE	OFFSET (ft)
CNCF	100.75	GR	110.50	TEN	0.00		

Data File 1 : FI : rks6685:/data/14175b/final.xtf  
 Created On : Dec 8 12:58:48 2007  
 Company : CPC MINERAL, LLC  
 Well : CPC 17-1  
 Field : WILDCAT  
 File Interval: 7812 - 9448.75 Feet  
 Oct : N87ba

GR BACKUP

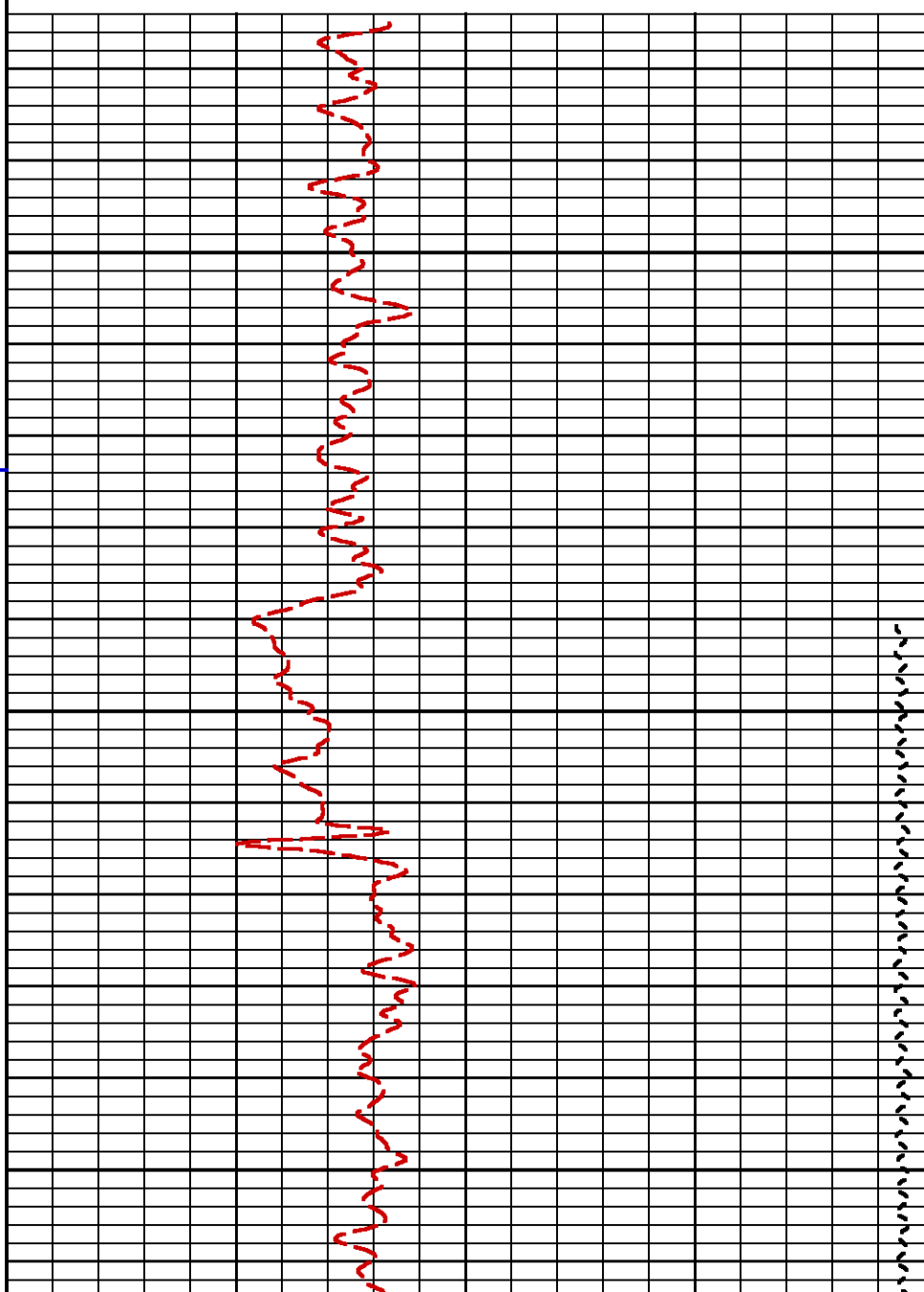
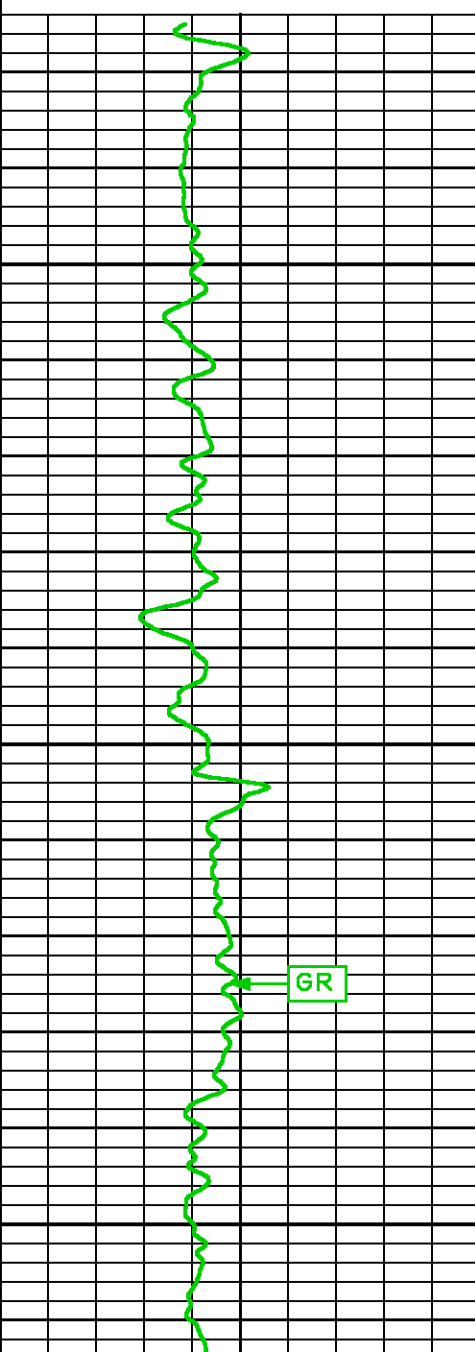
GAMMA RAY [gr] 0 150

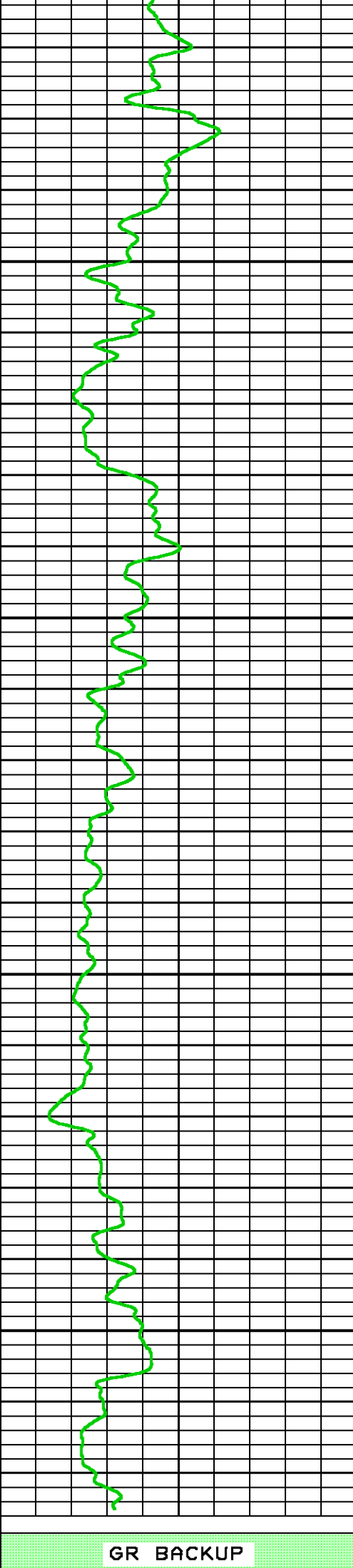
FEET  
 BVOL  
 -100  
 1000  
 10000  
 CVOL  
 100  
 1000  
 10000

TOOL STICKING

NEUTRON POROSITY [cnrf] 30 -10

DIFF. TENSION [ten] 4750 -250



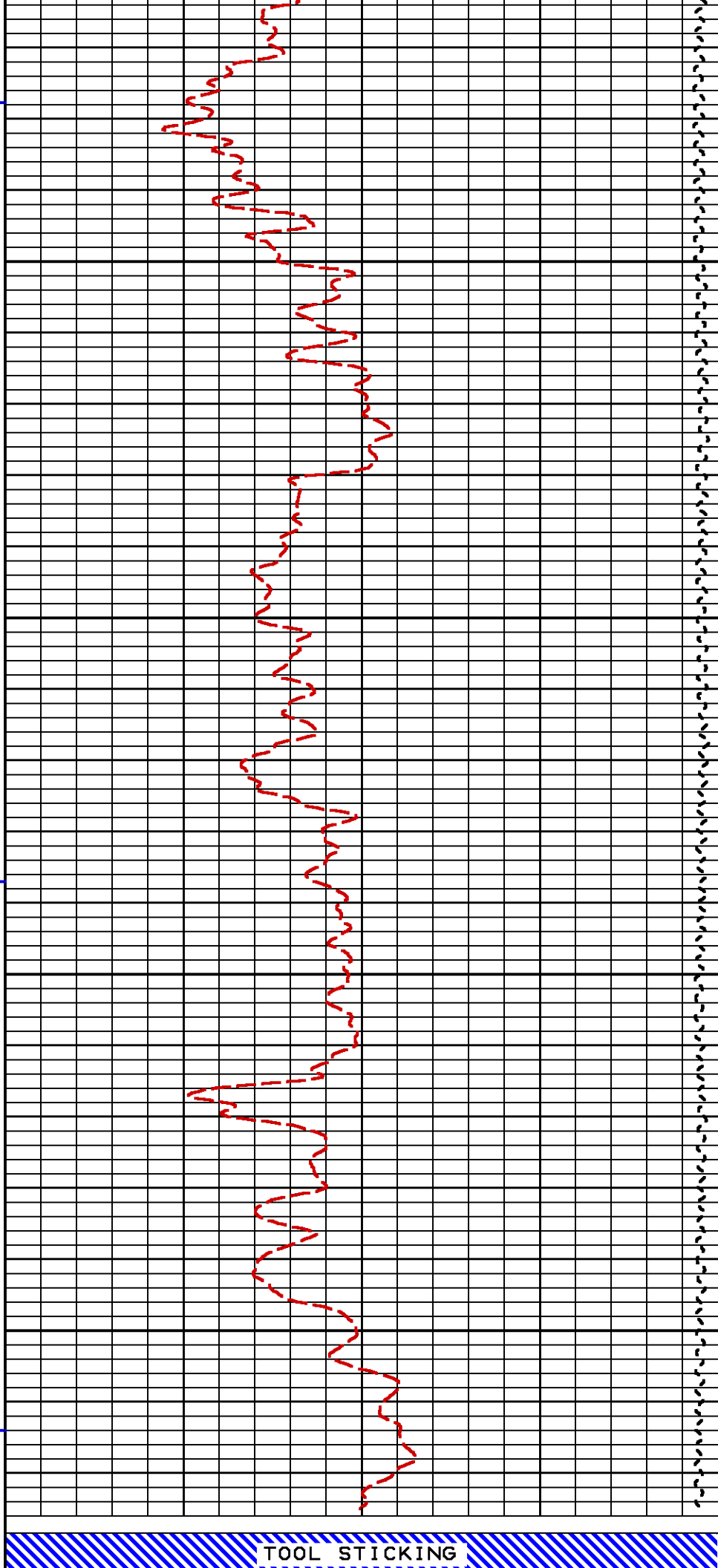


8100

8200

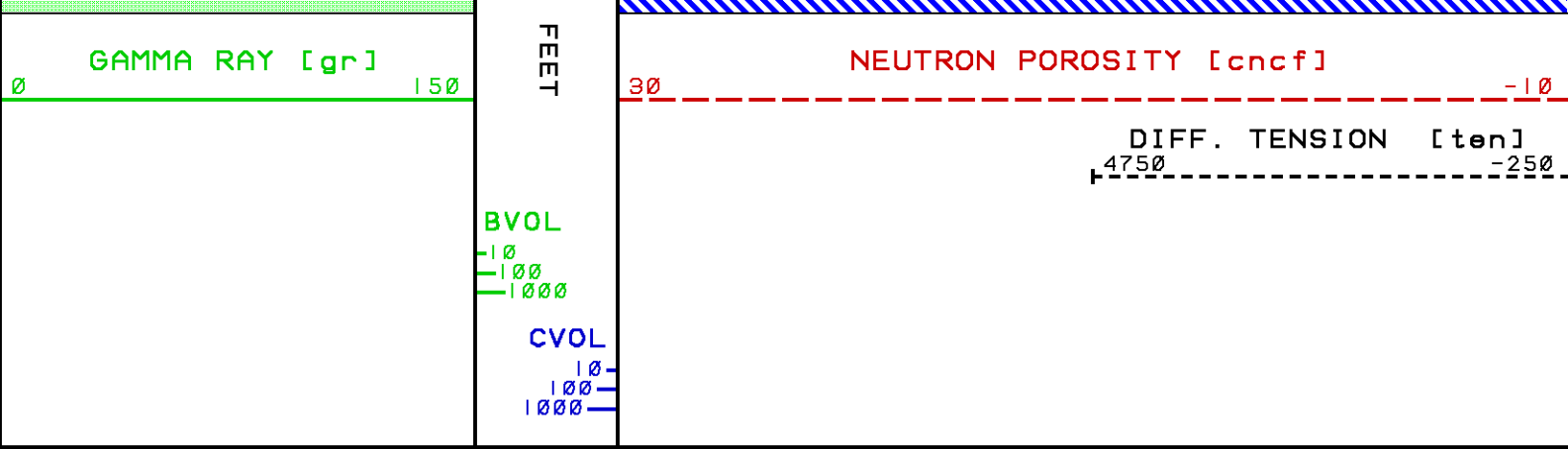
100

GR BACKUP



TOOL STICKING





## CALIBRATION / VERIFICATION SUMMARY

Source File: /data/14175b/N87ba.tpl

CAL PRIMARY CALIBRATION SUMMARY						
TOOL #: <span style="border: 1px solid black; padding: 2px;">4209XM 10236226</span>		DATE/TIME PERFORMED: <span style="border: 1px solid black; padding: 2px;">Thu Dec 13 21:13:44 2007</span>				
UNIT #: <span style="border: 1px solid black; padding: 2px;">3882TD 66865</span>						
	SMALL RING (mV)	LARGE RING (mV)	MULT	ADD	SMALL RING (in)	LARGE RING (in)
CALIPER	3021.0	6610.5	0.00167	0.95022	6.000	12.000

CAL BEFORE LOG VERIFICATION SUMMARY						
TOOL #: <span style="border: 1px solid black; padding: 2px;">4209XM 10236226</span>		DATE/TIME PERFORMED: <span style="border: 1px solid black; padding: 2px;">Fri Dec 14 15:59:37 2007</span>			DAYS SINCE CAL: <span style="border: 1px solid black; padding: 2px;">0</span>	
UNIT #: <span style="border: 1px solid black; padding: 2px;">3882TD 66865</span>						
	I.D. (mV)	MULT	ADD	I.D. (in)		
CALIPER	3134.7	0.00167	0.95022	6.190		

CAL AFTER LOG VERIFICATION SUMMARY						
TOOL #: <span style="border: 1px solid black; padding: 2px;">4209XM 10236226</span>		DATE/TIME PERFORMED: <span style="border: 1px solid black; padding: 2px;">Fri Dec 14 20:14:55 2007</span>			DAYS SINCE CAL: <span style="border: 1px solid black; padding: 2px;">0</span>	
UNIT #: <span style="border: 1px solid black; padding: 2px;">3882TD 66865</span>						
	I.D. (mV)	MULT	ADD	I.D. (in)		
CALIPER	3212.4	0.00167	0.95022	6.320	5.890	6.890

GR PRIMARY CALIBRATION SUMMARY						
TOOL #: <span style="border: 1px solid black; padding: 2px;">1329XA 10041656</span>		DATE/TIME PERFORMED: <span style="border: 1px solid black; padding: 2px;">Fri Dec 7 16:05:06 2007</span>				
UNIT #: <span style="border: 1px solid black; padding: 2px;">38608B 180960</span>		CALB JIG #: <span style="border: 1px solid black; padding: 2px;">4702NK DA-404</span>				
	BACKGROUND (cts/e)	CALBTR ON (cts/e)	CR DIFF (cts/e)	MULT	BACKGROUND (gAPI)	CALBTR ON (gAPI)
GR	84.73	741.49	656.8	0.190	16.13	141.13
			330.0			125

**GR PRIMARY VERIFICATION SUMMARY**

TOOL #: 1329XA 10041656 DATE/TIME PERFORMED: Fri Dec 7 18:11:19 2007

UNIT #: 3860SB IB8960 VERI JIG #: 4702NK DA-404

	BACKGROUND (cts/s)	CALBRTR ON (cts/s)	MULT	BACKGROUND (gAPI)	CALBRTR ON (gAPI)	DIFF. (gAPI)
GR	83.42	739.62	0.190	15.88	140.77	124.89 115.00 135.00

**GR BEFORE LOG VERIFICATION SUMMARY**

TOOL #: 1329XA 10041656 DATE/TIME PERFORMED: Thu Dec 13 21:04:48 2007 DAYS SINCE CAL: 6

UNIT #: 3882TD 66865 VERI JIG #: 4702NK DA-404

	BACKGROUND (cts/s)	CALBRTR ON (cts/s)	MULT	BACKGROUND (gAPI)	CALBRTR ON (gAPI)	DIFF. (gAPI)
GR	777.84	1411.14	0.190	148.05	268.58	120.54 114.89 134.99

**GR AFTER LOG VERIFICATION SUMMARY**

TOOL #: 1329XA 10041656 DATE/TIME PERFORMED: Fri Dec 14 20:08:06 2007 DAYS SINCE CAL: 7

UNIT #: 3882TD 66865 VERI JIG #: 4702NK DA-404

	BACKGROUND (cts/s)	CALBRTR ON (cts/s)	MULT	BACKGROUND (gAPI)	CALBRTR ON (gAPI)	DIFF. (gAPI)
GR	767.60	1423.93	0.190	146.10	271.02	124.92 118.54 130.54

**CNH PRIMARY CALIBRATION SUMMARY**

TOOL #: 2447XA 10040679 DATE/TIME PERFORMED: Fri Dec 7 14:33:29 2007

UNIT #: 3860SB IB8960 CALIBRATOR #: 2437XB 112667 SOURCE #: 4717XS 072632

	MEASURED CPS	DEADTM CORR CPS	DTC SSN/LSN	NOMINAL SSN/LSN	CORRECTION FACTOR	POROSITY (pu)
LSN	408.91	412.96				
SSN	1112.69	1138.01				
RATIO			2.75574	2.82600	1.02550 0.97000 1.07000	
CN						26.118

**CNH PRIMARY VERIFICATION SUMMARY**

TOOL #: 2447XA 10040679 DATE/TIME PERFORMED: Fri Dec 7 14:43:23 2007

UNIT #: 3860SB IB8960 ICE BLOCK #: 4717ND D--346

	MEASURED CPS	DEADTM CORR CPS	DTC SSN/LSN	CORRECTION FACTOR	DTC CORR SSN/LSN	POROSITY (pu)
LSN	1012.62	1038.08				
SSN	2402.10	2523.37				
RATIO			2.43081	1.02550	2.49527	
CN						20.288

**CNH BEFORE LOG VERIFICATION SUMMARY**

TOOL #: 2447XA 10040679 DATE/TIME PERFORMED: Thu Dec 13 21:04:48 2007 DAYS SINCE CAL: 6

TOOL #1 2447XA 10040679 DATE/TIME PERFORMED: FRI DEC 13 21:04:53 2007 DAYS SINCE CAL: 6

UNIT #: 3882TD 66865 ICE BLOCK #: 4717ND D--346

	MEASURED CPS	DEADTM CPS	CORR CPS	DTC SSN/LSN	CORRECTION FACTOR	DTC CORR SSN/LSN	POROSITY (pu)
LSN	<u>1007.57</u>	<u>1032.56</u>					
SSN	<u>2362.81</u>	<u>2480.05</u>					
RATIO				<u>2.40185</u>	<u>1.02550</u>	<u>2.46483</u>	
CN							<u>19.792</u> 18.288 22.288

### CNH AFTER LOG VERIFICATION SUMMARY

TOOL #: 2447XA 10040679 DATE/TIME PERFORMED: Fri Dec 14 20:08:12 2007 DAYS SINCE CAL: 7

UNIT #: 3882TD 66865 ICE BLOCK #: 4717ND D--346

	MEASURED CPS	DEADTM CPS	CORR CPS	DTC SSN/LSN	CORRECTION FACTOR	DTC CORR SSN/LSN	POROSITY (pu)
LSN	<u>1016.67</u>	<u>1042.12</u>					
SSN	<u>2365.32</u>	<u>2482.82</u>					
RATIO				<u>2.38248</u>	<u>1.02550</u>	<u>2.44569</u>	
CN							<u>19.497</u> 17.792 21.792

### HTDN PRIMARY CALIBRATION SUMMARY

TOOL #: 2233MA 10129053 DATE/TIME PERFORMED: Fri Dec 7 13:46:26 2007

UNIT #: 38606B IB8960 CALB. BLOCK SET: 2225XA 94297\_2233 CS SOURCE #: 4703NT 16082B

CS PEAK CHANNEL #	BACKGROUND (cts/s)
<u>230.6</u>	<u>1135.4</u>
225.0	235.0

	SSD-NDTC (cts/s)	HRD1-NDTC (cts/s)	HRD2-NDTC (cts/s)	DEN (g/cm3)	CORR (g/cm3)
MG BLOCK	<u>13636.5</u>	<u>1609.1</u>	<u>2733.7</u>	<u>1.701</u>	<u>-0.011</u>
AL BLOCK	<u>7141.5</u>	<u>178.4</u>	<u>318.9</u>	<u>2.657</u>	<u>-0.026</u>
AL+SHIM (CORR)	<u>10053.4</u>	<u>339.0</u>	<u>554.7</u>	<u>2.564</u>	<u>0.139</u>
RATIO MG/AL	<u>1.91</u> 1.87 1.97	<u>9.02</u> 8.70 9.70	<u>8.57</u> 8.30 9.30		

### HTDN PRIMARY VERIFICATION SUMMARY

TOOL #: 2233MA 10129053 DATE/TIME PERFORMED: Fri Dec 7 13:54:39 2007

UNIT #: 38606B IB8960 VERI. JIG #: 4704NA 139939

	SSD-NDTC (cts/s)	HRD1-NDTC (cts/s)	HRD2-NDTC (cts/s)	DEN (g/cm3)	CORR (g/cm3)
FIELD BLOCK	<u>7589.9</u>	<u>988.4</u>	<u>3869.2</u>	<u>1.215</u>	<u>-0.446</u>

### HTDN BEFORE LOG VERIFICATION SUMMARY

TOOL #: 2233MA 10129053 DATE/TIME PERFORMED: Thu Dec 13 21:05:13 2007 DAYS SINCE CAL: 6

UNIT #: 3882TD 66865 VERI. JIG #: 4704NA 139939

SSD-NDTC (cts/s)	HRD1-NDTC (cts/s)	HRD2-NDTC (cts/s)	DEN (g/cm3)	CORR (g/cm3)
---------------------	----------------------	----------------------	----------------	-----------------

FIELD BLOCK

7504.8

979.4

3822.3

1.215

-0.452

1.186 1.240

-0.471 -0.421

## HTDN AFTER LOG VERIFICATION SUMMARY

TOOL #: 2233MA 10129053 DATE/TIME PERFORMED: Fri Dec 14 20:08:16 2007 DAYS SINCE CAL: 7

UNIT #: 3882TD 66865 VERI. JIG #: 4704NA 139939

	SSD-NDTC (cts/s)	HRD1-NDTC (cts/s)	HRD2-NDTC (cts/s)	DEN (g/cm3)	CORR (g/cm3)
FIELD BLOCK	7497.6	975.3	3830.1	1.214	-0.453
				1.186 1.240	-0.471 -0.421

## INSTRUMENT CONFIGURATION

Source File: /data/14175b/N07ba~tdg

CABLEHEAD

Series : CABL338  
 Mnemonic : CBLH  
 Diameter : 3.38"  
 Measure Point: 2.75' : CABLEHEAD TOP

SWIVEL

Series : 8944KB  
 Mnemonic : SWVL  
 Diameter : 3.38"

DOWNHOLE POWER ADAPTER

Series : 4430XB  
 Mnemonic : DHPA  
 Diameter : 3.62"

TTRM SUB

Series : 8981XA  
 Mnemonic : TTRM  
 Diameter : 3.63"  
 Measure Point: 1.38' : TEMP MP

CALIPER

Series : 4209XM  
 Mnemonic : CAL  
 Diameter : 4.25"  
 Measure Point: 4.40' : CAL MP

WTS COMMON REMOTE

Series : 3514XB  
 Mnemonic : WTS  
 Diameter : 3.63"

HT/HP DIGITAL SPECTRALOG

Series : 1329XA

NAUTILUS COMPENSATED NEUTRON

Series : 2447XA  
 Mnemonic : CN  
 Diameter : 4.16"  
 Measure Point: 2.89' : LSN MP  
 Measure Point: 2.24' : SSN MP



132.27'

CABLEHEAD TOP 129.52'

TEMP MP 115.72'

RM MP 115.47'

CAL MP 111.44'

GR MP 94.18'

LSN MP 84.85'

**NAUTILUS SLICK DENSITY MANDREL**

Series : 2299MA  
Mnemonic : HTD  
Diameter : 4.16"  
Measure Point: 3.59' LSD MP  
Measure Point: 3.17' SSD MP

**KNUCKLE JOINT (DOUBLE)**

Series : 3939XA  
Mnemonic : KNJT  
Diameter : 3.38"

**ARRAY ACOUSTILOG ELECTRONICS**

Series : 1667EA  
Mnemonic : DAC  
Diameter : 3.38"

**CROSS MULTIPOLE ARRAY ACOUSTILOG**

Series : 1678MA  
Mnemonic : XMAC  
Diameter : 3.88"  
Measure Point: 5.50' R8  
Measure Point: 5.00' R7  
Measure Point: 4.50' R6  
Measure Point: 4.00' R5  
Measure Point: 3.50' R4  
Measure Point: 3.00' R3  
Measure Point: 2.50' R2  
Measure Point: 2.00' R1

**SHEAR WAVE ACOUSTILOG**

Series : 1678PB  
Mnemonic : XMAC  
Diameter : 3.88"

**MULTI-POLE ARRAY ACOUSTIC**

Series : 1668BA  
Mnemonic : MAC  
Diameter : 3.83"  
Measure Point: 5.42' MONOPOLE T2 MP  
Measure Point: 4.87' DIPOLE T4 MP  
Measure Point: 3.67' DIPOLE T3 MP

**MULTI-POLE ARRAY ACOUSTIC**

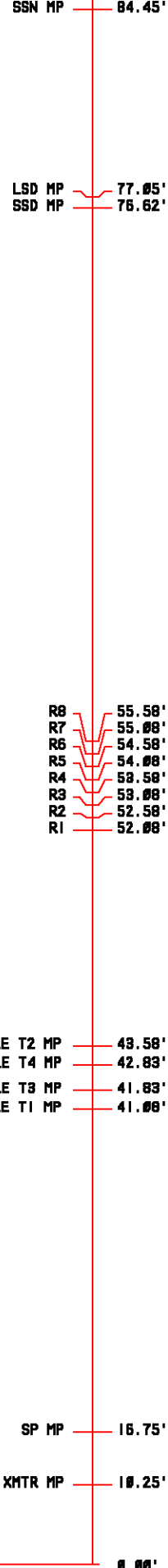
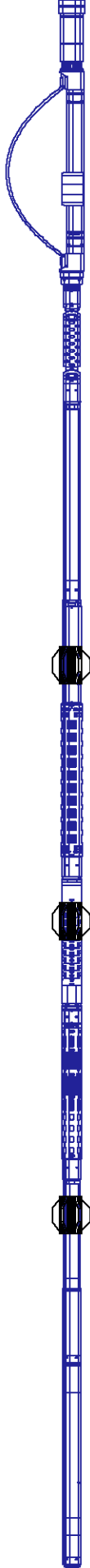
Series : 1668FA  
Mnemonic : MAC  
Diameter : 3.38"

**HIGH DEFINITION INDUCTION TOOL**

Series : 1515XA  
Mnemonic : HDIL  
Diameter : 3.82"  
Measure Point: 18.75' SP MP  
Measure Point: 18.25' XMTR MP

**BULL PLUG 3 1/8**

TOTAL LENGTH: 132.49'  
TOTAL WEIGHT: 2456 lbs  
MAX DIAMETER: Ø'4.25"



SSN MP — 84.45'  
LSD MP — 77.05'  
SSD MP — 76.62'

R8 — 55.58'  
R7 — 55.08'  
R6 — 54.58'  
R5 — 54.08'  
R4 — 53.58'  
R3 — 53.08'  
R2 — 52.58'  
R1 — 52.08'

MONOPOLE T2 MP — 43.58'  
DIPOLE T4 MP — 42.83'  
DIPOLE T3 MP — 41.83'  
MONOPOLE T1 MP — 41.08'

SP MP — 16.75'  
XMTR MP — 10.25'

0.00'



COMPANY CPC MINERAL, LLC  
 WELL CPC 17-1  
 FIELD WILDCAT  
 COUNTY BONNEVILLE STATE IDAHO

FILE NO:  
14175B  
 API NO:  
11-019-20011



LOCATION:  
 SHL: 705' FWL & 2264' FSL  
 SEC 17 TWP 3S RGE 43E

ELEVATIONS:  
 KB 6435.4 FT  
 DF  
 GL 6413.4 FT  
 DATE 14-DEC-2007